

PROPOSED BUILDING BEYOND

ADJACENT BUILDING

CMU BLOCK

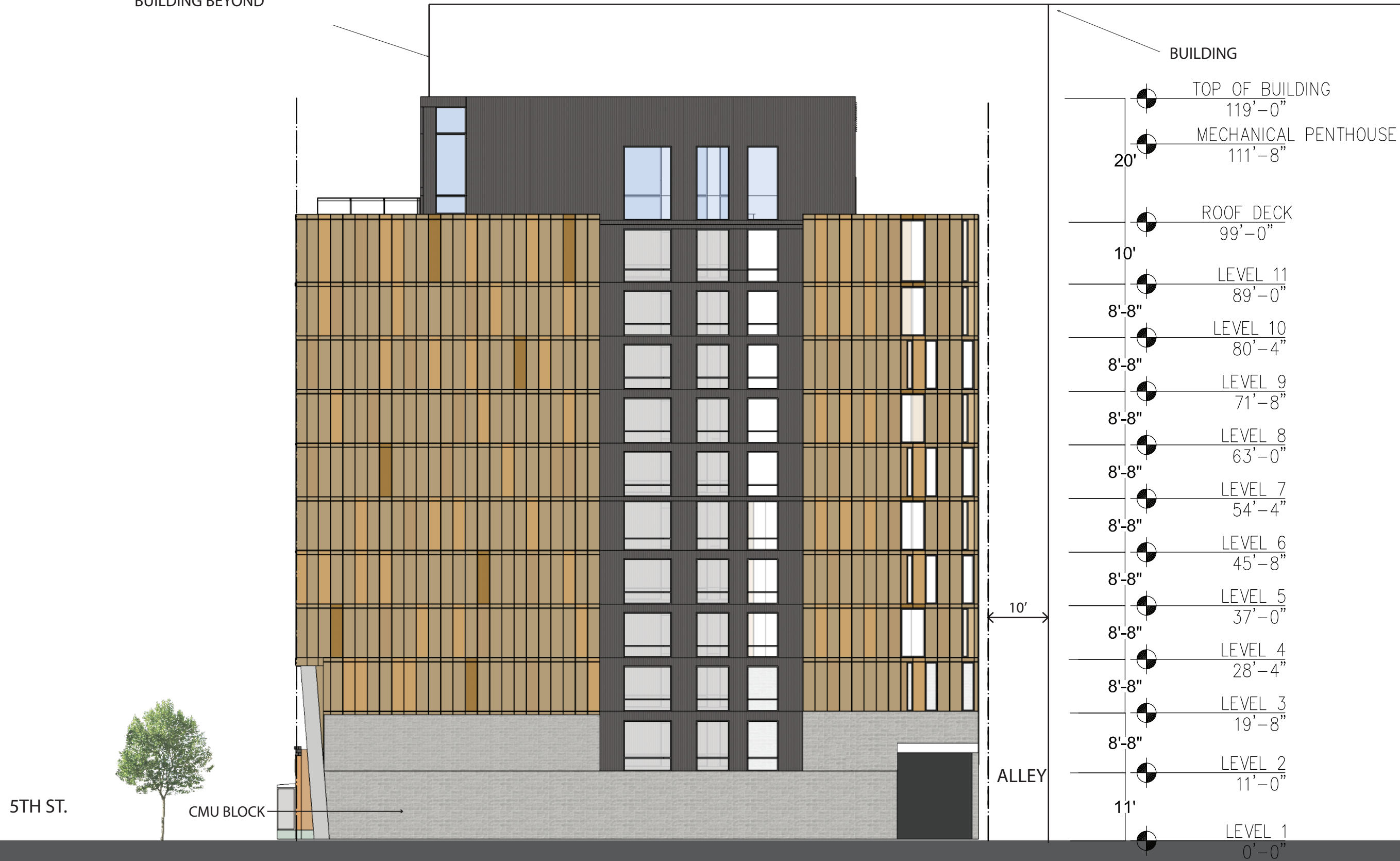
ALLEY



	TOP OF BUILDING	119'-0"
20'	MECHANICAL PENTHOUSE	111'-8"
	ROOF DECK	99'-0"
10'	LEVEL 11	89'-0"
8'-8"	LEVEL 10	80'-4"
8'-8"	LEVEL 9	71'-8"
8'-8"	LEVEL 8	63'-0"
8'-8"	LEVEL 7	54'-4"
8'-8"	LEVEL 6	45'-8"
8'-8"	LEVEL 5	37'-0"
8'-8"	LEVEL 4	28'-4"
8'-8"	LEVEL 3	19'-8"
8'-8"	LEVEL 2	11'-0"
	LEVEL 15TH ST.	0'-0"

BUILDING BEYOND

BUILDING



5TH ST.



CMU BLOCK

ALLEY



VIEW FROM K STREET (PEDESTRIAN HEIGHT)

923-927 5TH ST. HOTEL
SHEET | A031

RENDERING

SCALE: NTS
DATE: 03.23.2018

FILLAT+
ARCHITECTURE