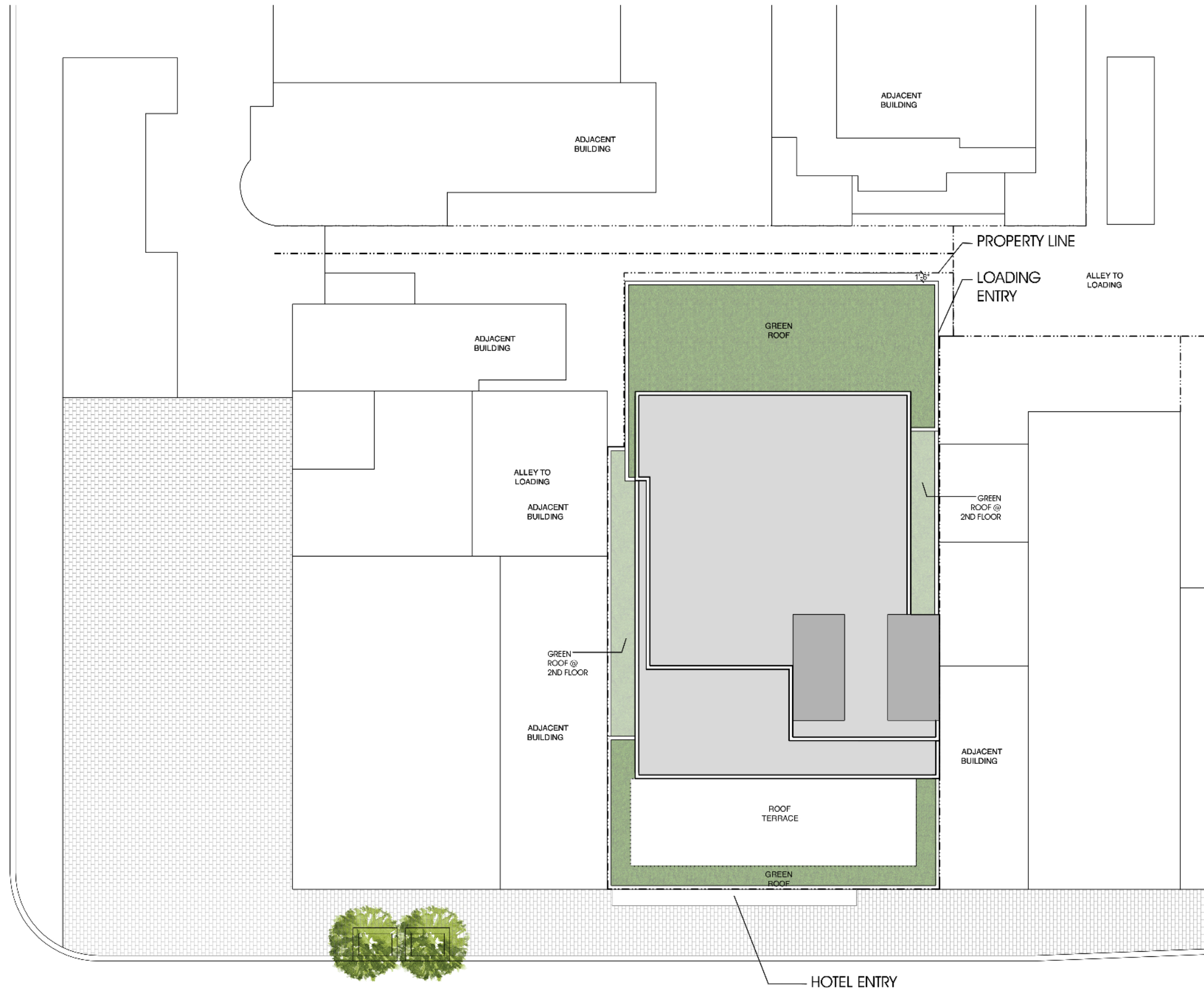
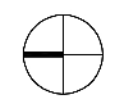
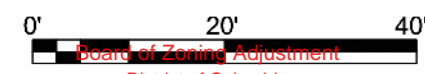


K ST. NW



5TH ST. NW

HOTEL ENTRY



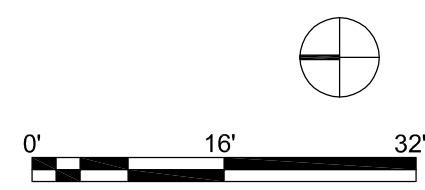
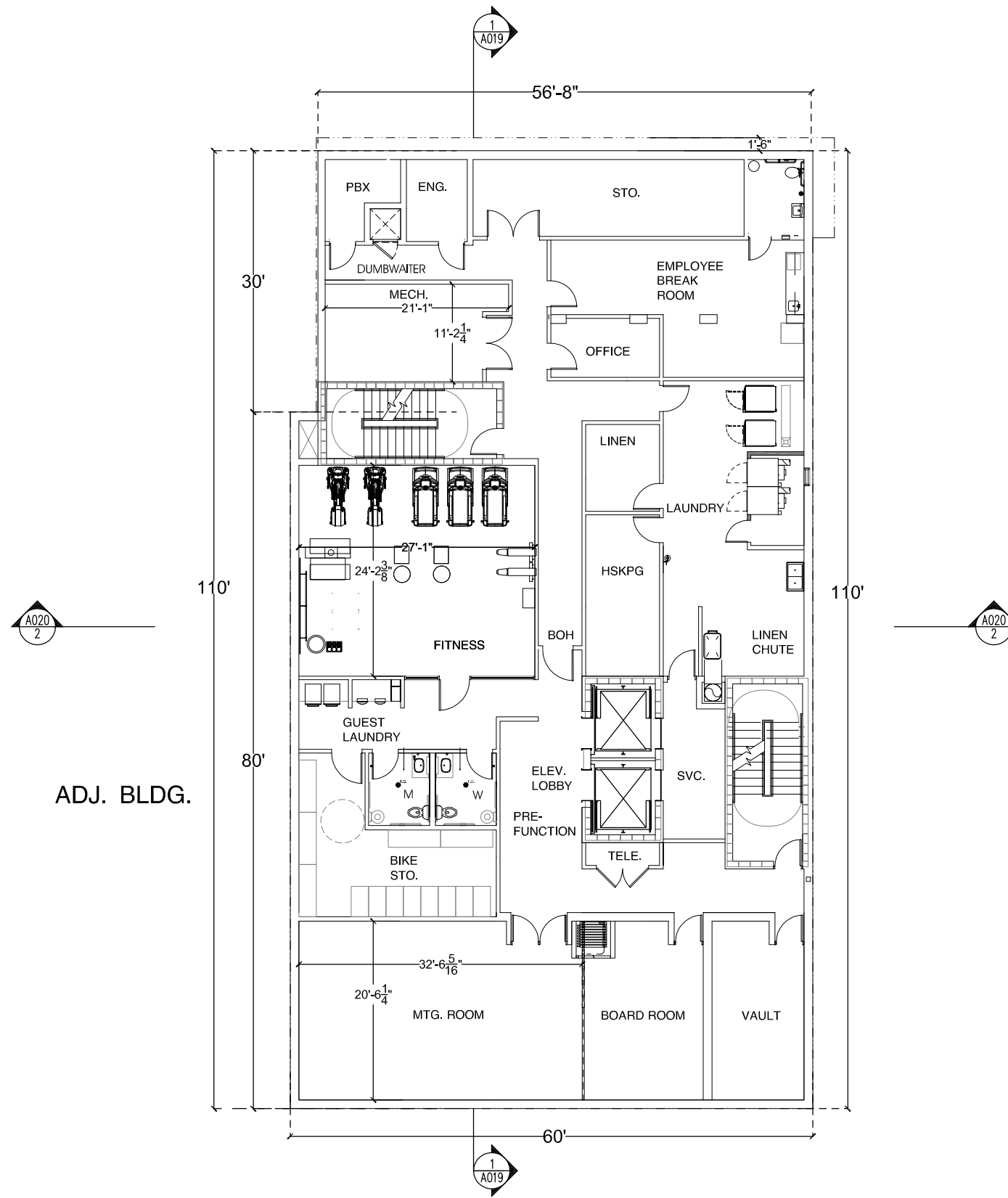
923-927 5TH ST. HOTEL  
SHEET | A012

SITE PLAN - PROPOSED BUILDING

SCALE: 1" = 20'-0"  
DATE: 03.07.2018

Board of Zoning Adjustment  
District of Columbia  
CASE NO. 19122  
EXHIBIT Q.3246  
**FILLAT+**  
ARCHITECTURE

© Copyright 2016. FILLAT + ARCHITECTURE All rights reserved.



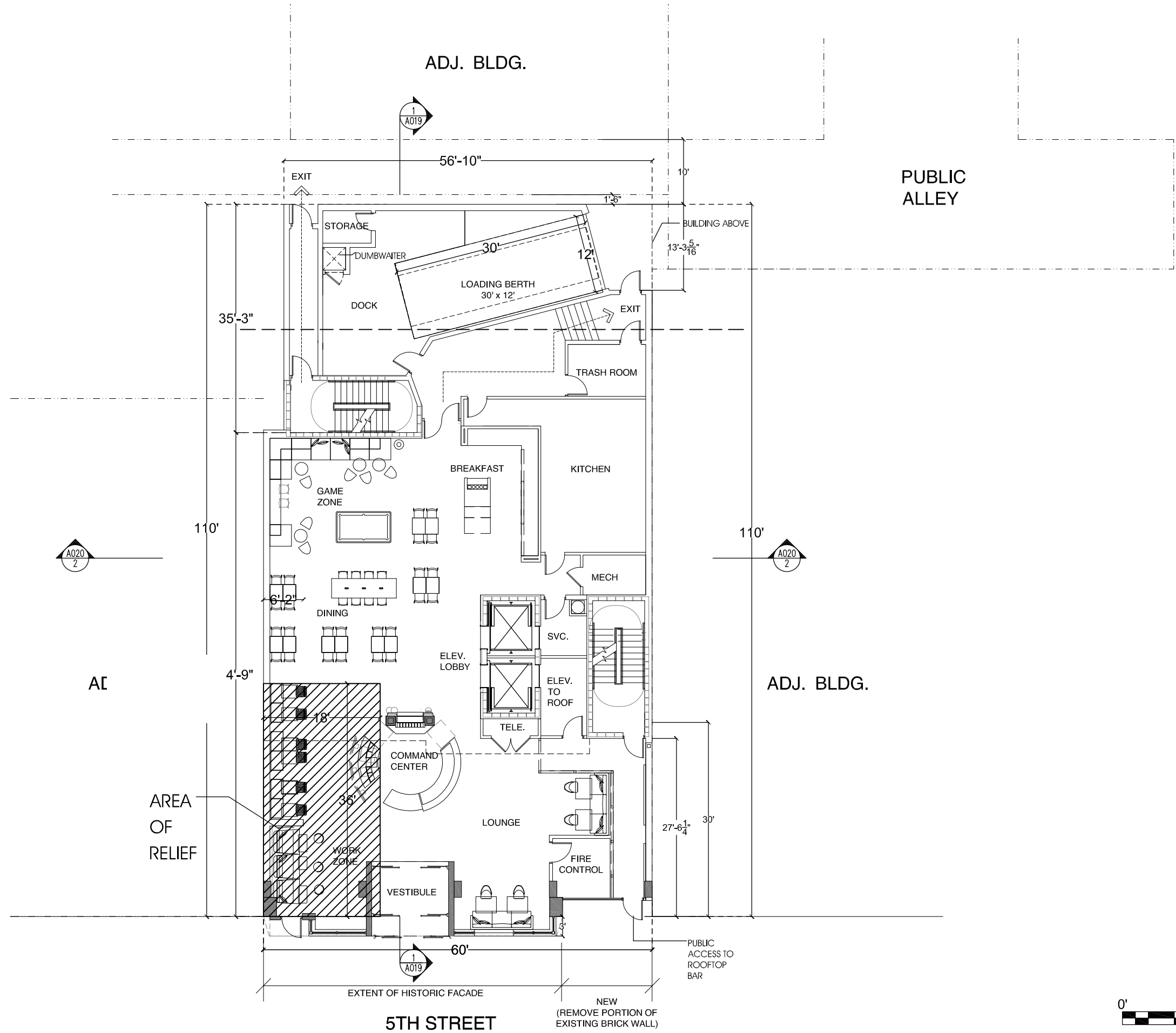
923-927 5TH ST. HOTEL  
SHEET | A013

CELLAR PLAN

SCALE: 1/16" = 1'-0"  
DATE: 03.07.2018

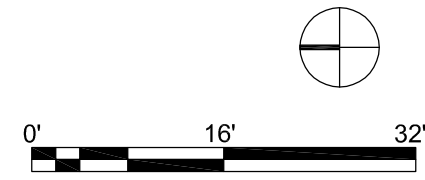
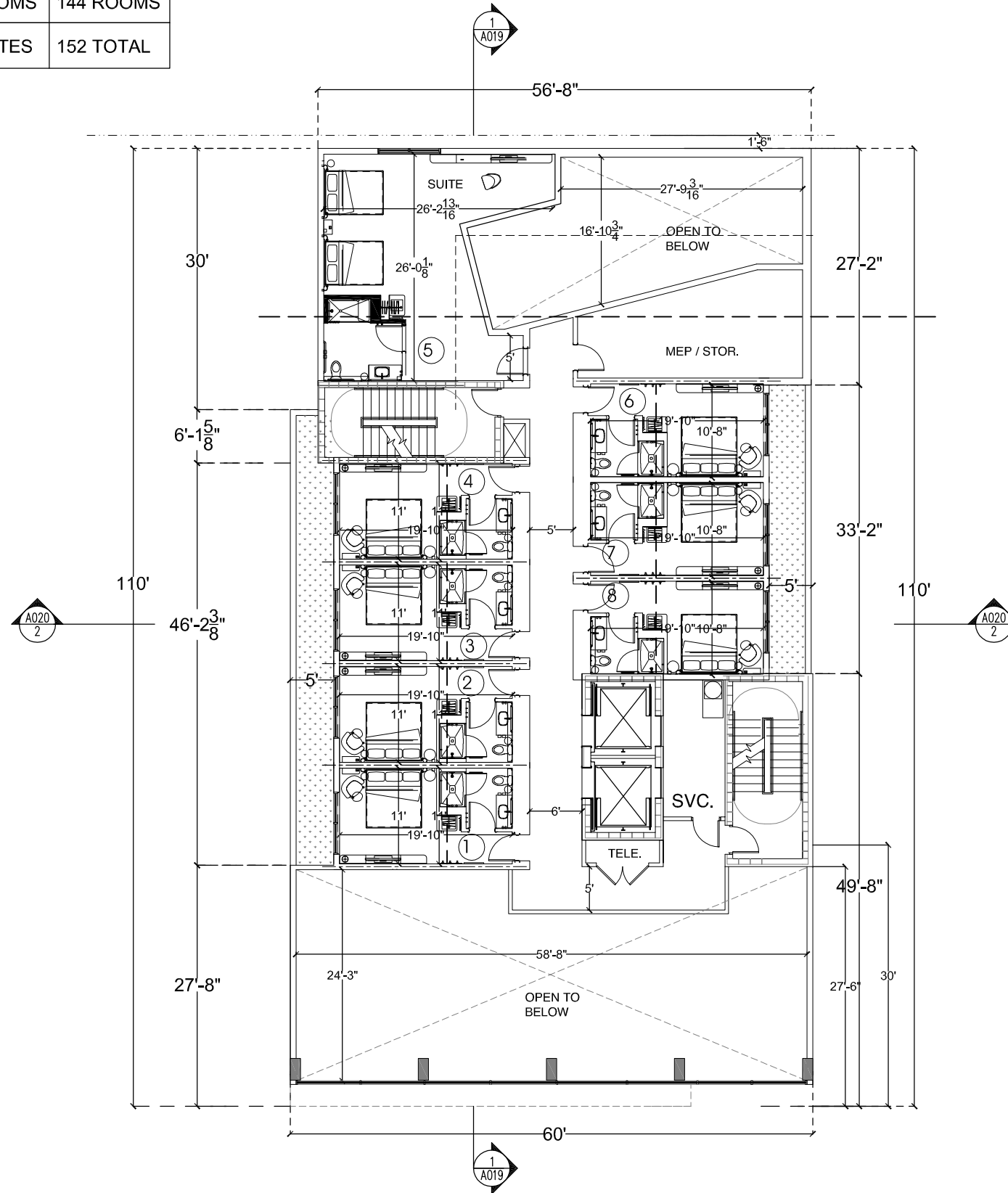


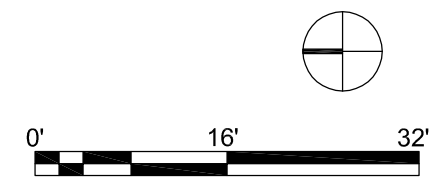
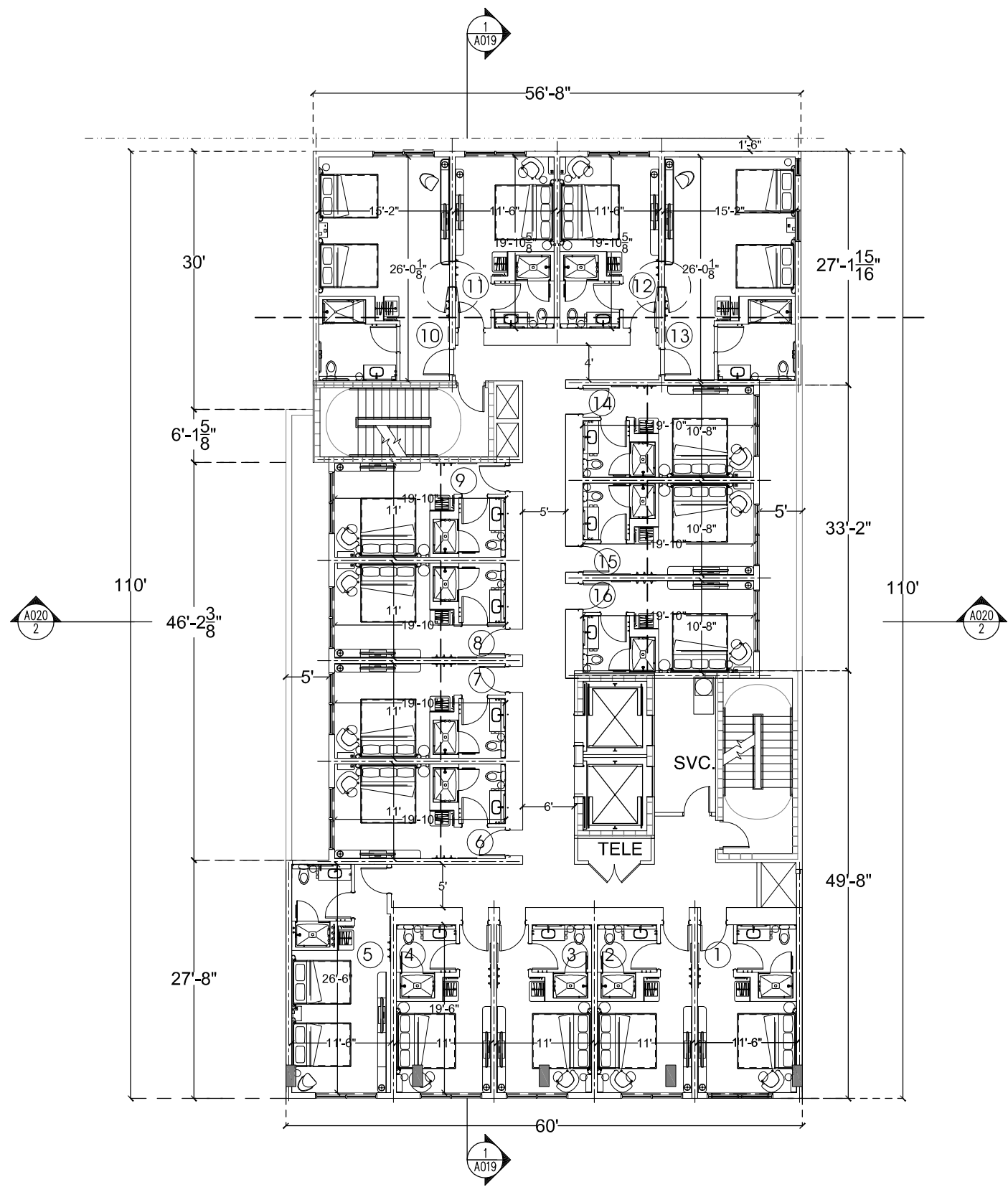
© Copyright 2016. FILLAT + ARCHITECTURE All rights reserved.



ROOM MIX SUMMARY

LEVEL	KING	QQ	ADA	SUITE	TOTAL
LEVEL 2	7 ROOMS	0 ROOMS	0 ROOMS	1 ROOMS	8 ROOMS
TYPICAL x 9 FLOORS	14 ROOMS 108 ROOMS	2 ROOMS 18 ROOMS	2 ROOMS 18 ROOMS	0 ROOMS 0 ROOMS	16 ROOMS 144 ROOMS
TOTAL	116 KING	18 QQ	18 ADA	1 SUITES	152 TOTAL





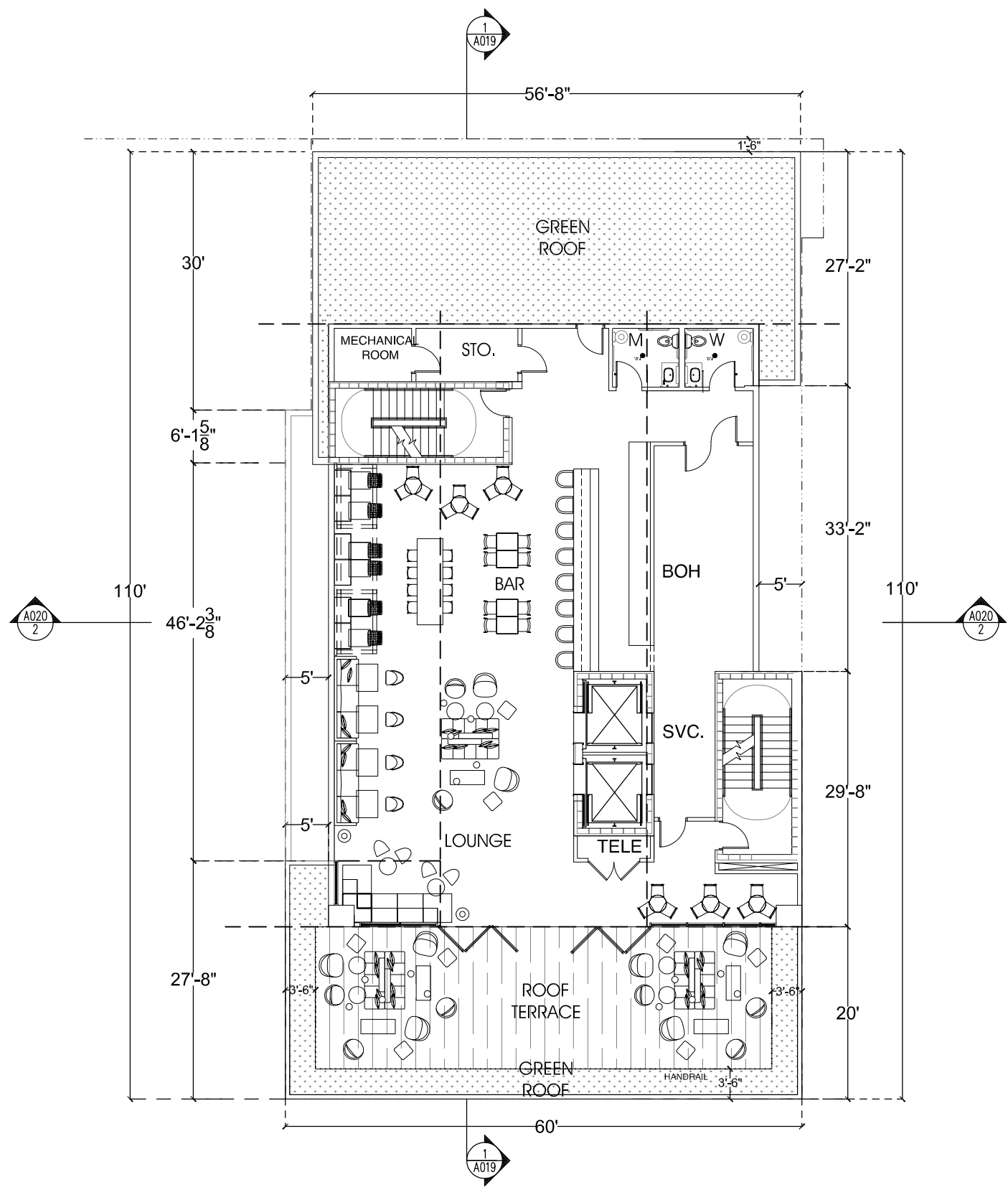
**PENTHOUSE AREA SUMMARY**

HABITABLE SPACE: 3,048 SF  
 MECHANICAL: 55 SF  
 CIRCULATION/EGRESS: 588 SF

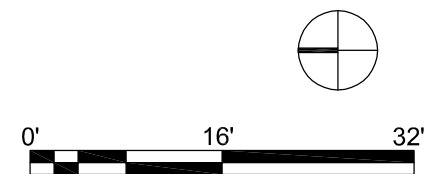
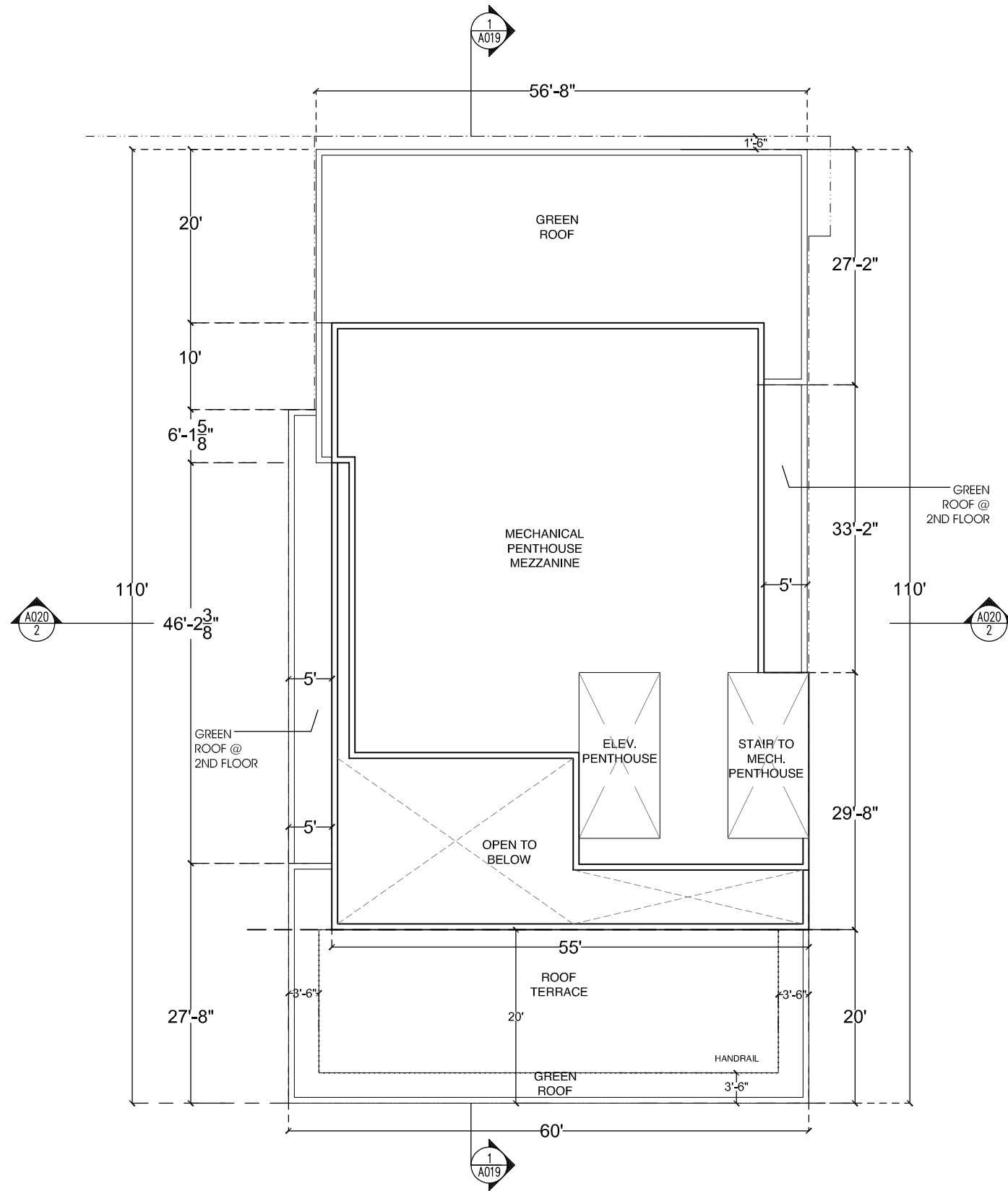
GREEN ROOF: 1,789 SF

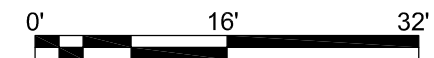
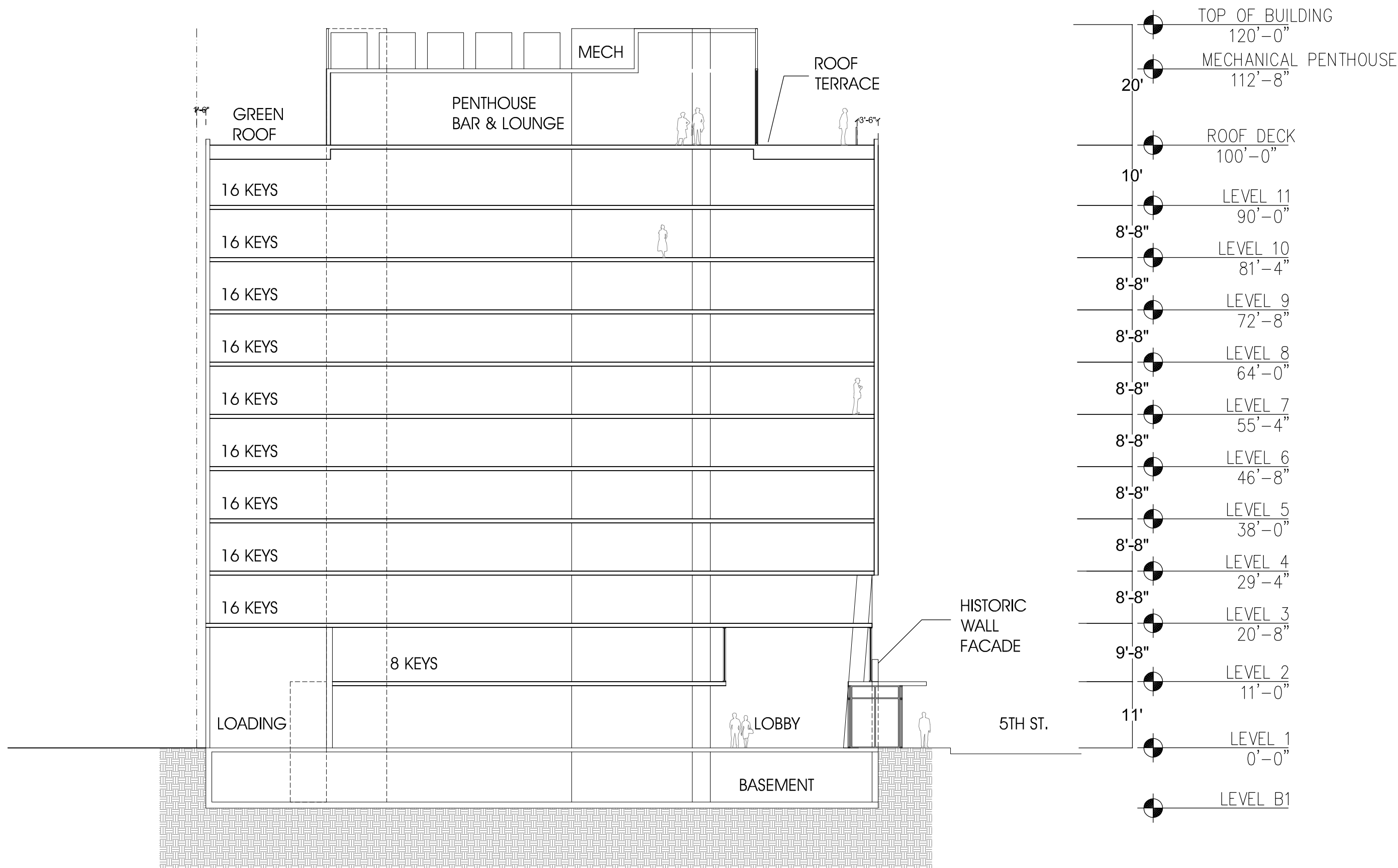
NOTE: PENTHOUSE INTENDED FOR PUBLIC ASSEMBLY USE

FRIDAY - SATURDAY: 2AM CLOSING  
 SUNDAY - THURSDAY: 1AM CLOSING

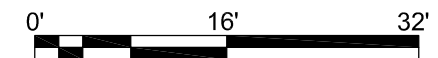
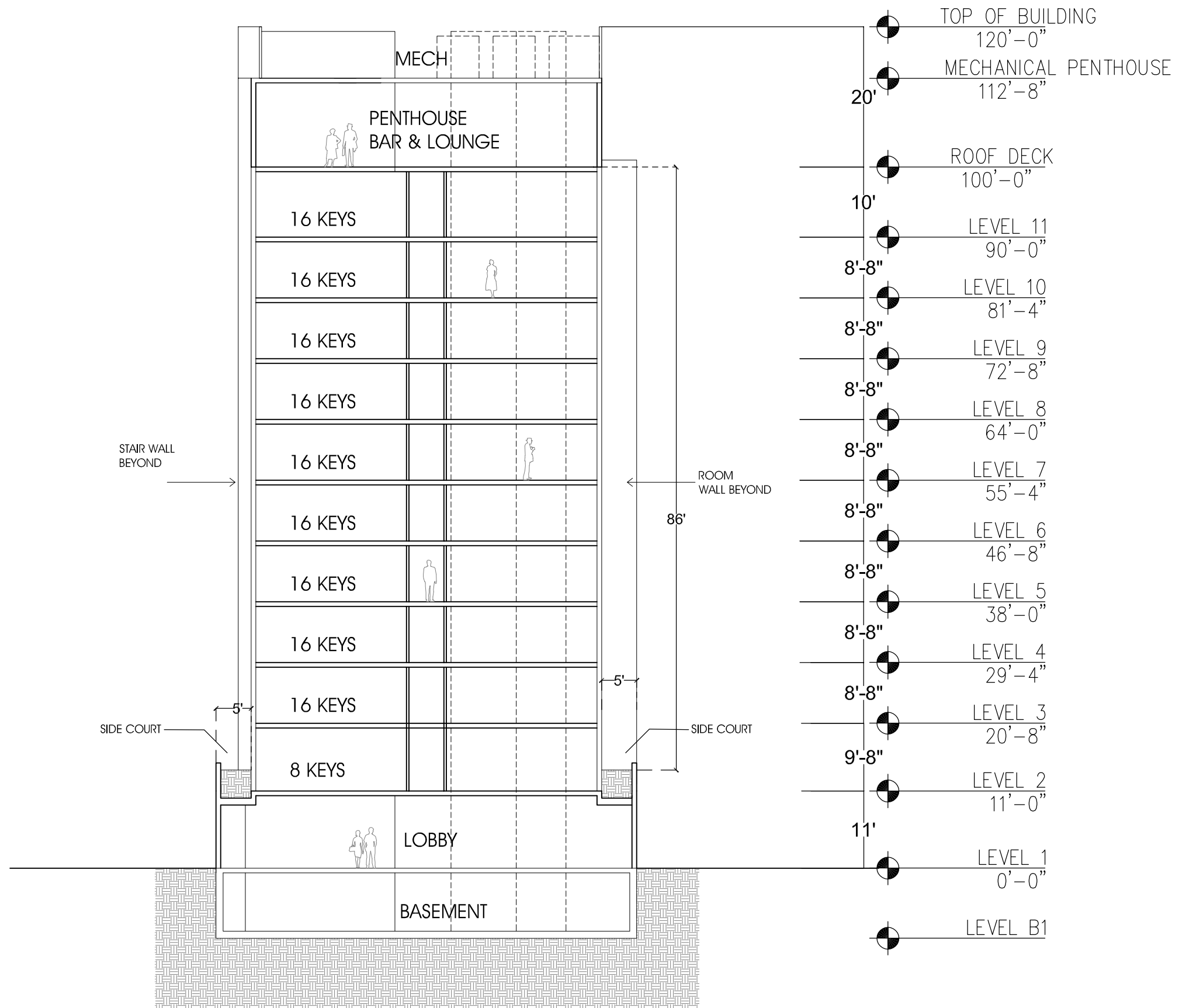


MECHANICAL AREA SUMMARY  
MECHANICAL: 2,683 SF









BUILDING BEYOND

EXISTING HISTORIC BUILDING

EXISTING HISTORIC FACADE

EXISTING HISTORIC BUILDINGS

PROPOSED BUILDING

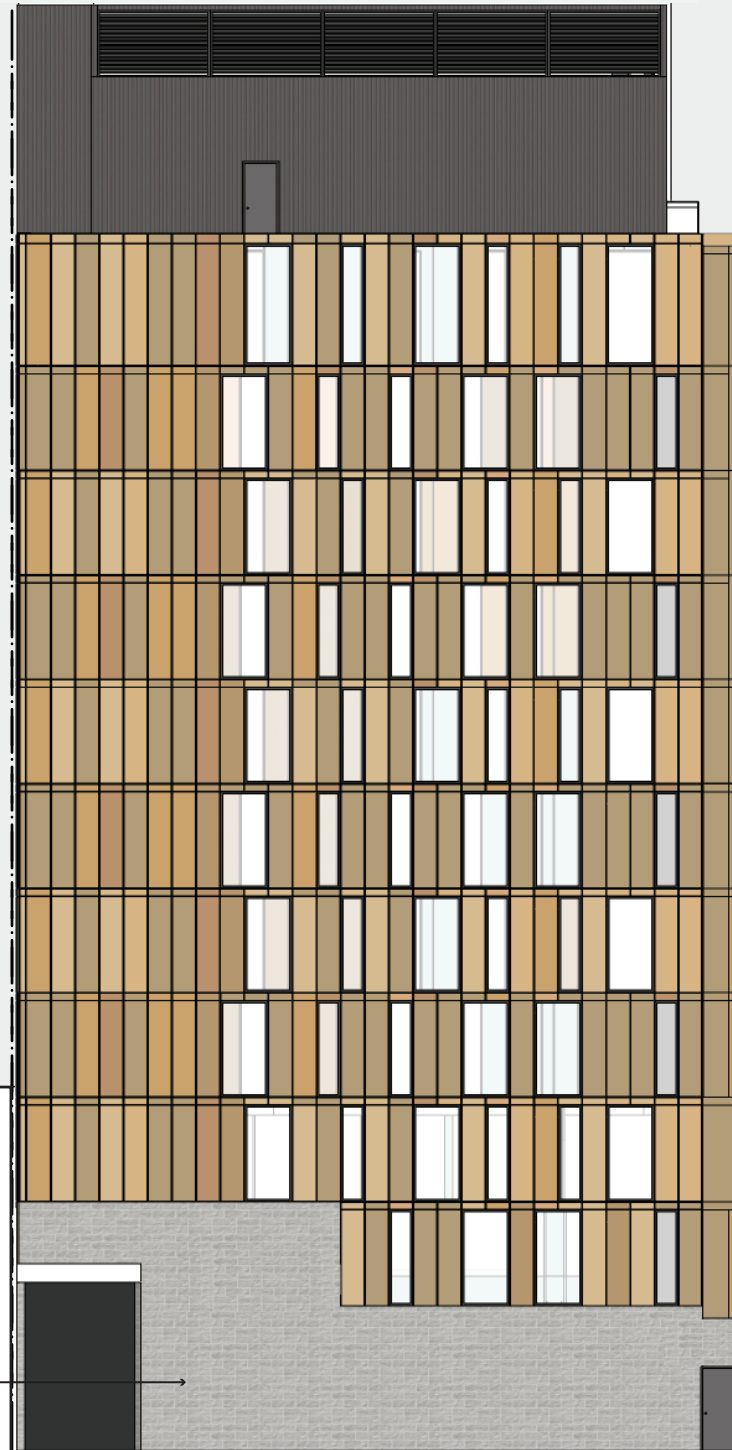


	TOP OF BUILDING	120'-0"
20'	MECHANICAL PENTHOUSE	112'-8"
	ROOF DECK	100'-0"
10'	LEVEL 11	90'-0"
8'-8"	LEVEL 10	81'-4"
8'-8"	LEVEL 9	72'-8"
8'-8"	LEVEL 8	64'-0"
8'-8"	LEVEL 7	55'-4"
8'-8"	LEVEL 6	46'-8"
8'-8"	LEVEL 5	38'-0"
8'-8"	LEVEL 4	29'-4"
8'-8"	LEVEL 3	20'-8"
9'-8"	LEVEL 2	11'-0"
11'	LEVEL 1	0'-0"
	LEVEL B1	-10'-0"

PROPOSED BUILDING

EXISTING HISTORIC BUILDINGS

CMU BLOCK



20'	TOP OF BUILDING	120'-0"
	MECHANICAL PENTHOUSE	112'-8"
	ROOF DECK	100'-0"
10'	LEVEL 11	90'-0"
8'-8"	LEVEL 10	81'-4"
8'-8"	LEVEL 9	72'-8"
8'-8"	LEVEL 8	64'-0"
8'-8"	LEVEL 7	55'-4"
8'-8"	LEVEL 6	46'-8"
8'-8"	LEVEL 5	38'-0"
8'-8"	LEVEL 4	29'-4"
8'-8"	LEVEL 3	20'-8"
9'-8"	LEVEL 2	11'-0"
11'	LEVEL 1	0'-0"
	LEVEL B1	-10'-0"

K ST.

PROPOSED BUILDING BEYOND

ADJACENT BUILDING

CMU BLOCK

ALLEY



	TOP OF BUILDING	120'-0"
20'	MECHANICAL PENTHOUSE	112'-8"
	ROOF DECK	100'-0"
10'		
	LEVEL 11	90'-0"
8'-8"	LEVEL 10	81'-4"
8'-8"	LEVEL 9	72'-8"
8'-8"	LEVEL 8	64'-0"
8'-8"	LEVEL 7	55'-4"
8'-8"	LEVEL 6	46'-8"
8'-8"	LEVEL 5	38'-0"
8'-8"	LEVEL 4	29'-4"
8'-8"	LEVEL 3	20'-8"
9'-8"	LEVEL 2	11'-0"
	LEVEL 1	0'-0"
	LEVEL B1	-10'-0"

5TH ST.



BUILDING BEYOND

5TH ST.



CMU BLOCK



ALLEY

BUILDING

	TOP OF BUILDING	120'-0"
20'	MECHANICAL PENTHOUSE	112'-8"
	ROOF DECK	100'-0"
10'	LEVEL 11	90'-0"
8'-8"	LEVEL 10	81'-4"
8'-8"	LEVEL 9	72'-8"
8'-8"	LEVEL 8	64'-0"
8'-8"	LEVEL 7	55'-4"
8'-8"	LEVEL 6	46'-8"
8'-8"	LEVEL 5	38'-0"
10'	LEVEL 4	29'-4"
8'-8"	LEVEL 3	20'-8"
9'-8"	LEVEL 2	11'-0"
11'	LEVEL 1	0'-0"
	LEVEL B1	-10'-0"