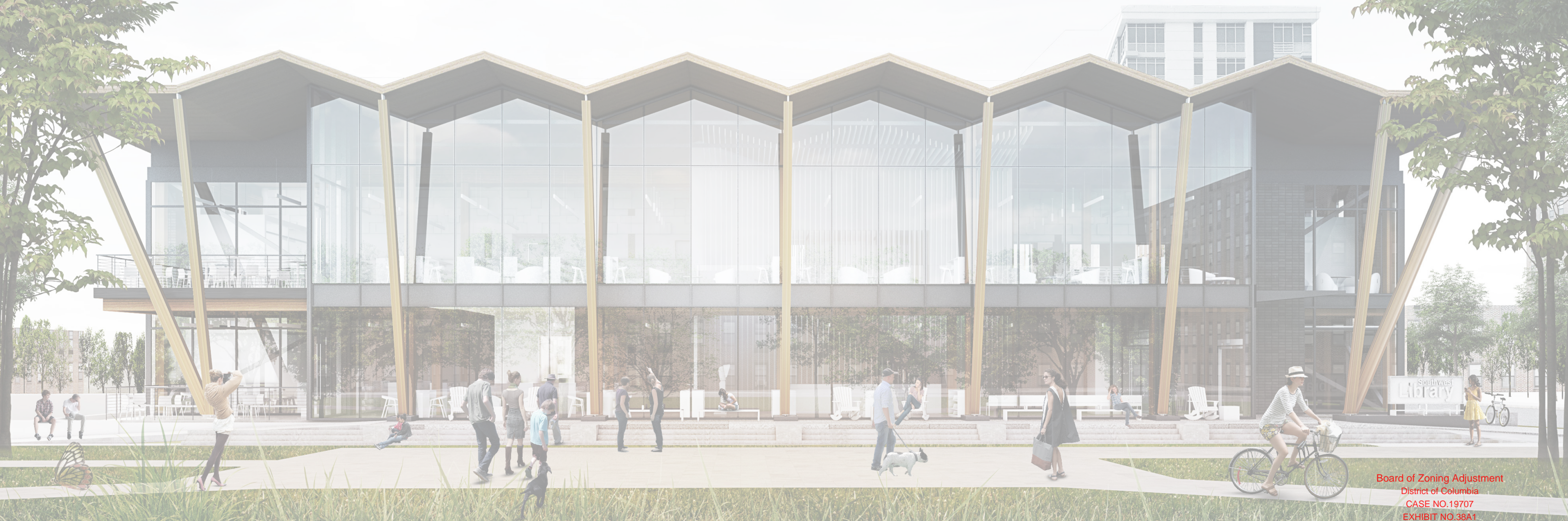


DCPL NEW SOUTHWEST LIBRARY

APRIL 11, 2018
BZA



Board of Zoning Adjustment
District of Columbia
CASE NO. 19707
EXHIBIT NO. 38A1

NEW SOUTHWEST LIBRARY

- Introduction of Case
- Summary of Application
- Overview of requested relief
 1. Vehicular and long term bicycle parking
 2. Lot Occupancy
 3. Screening

EXISTING LIBRARY / BACKGROUND

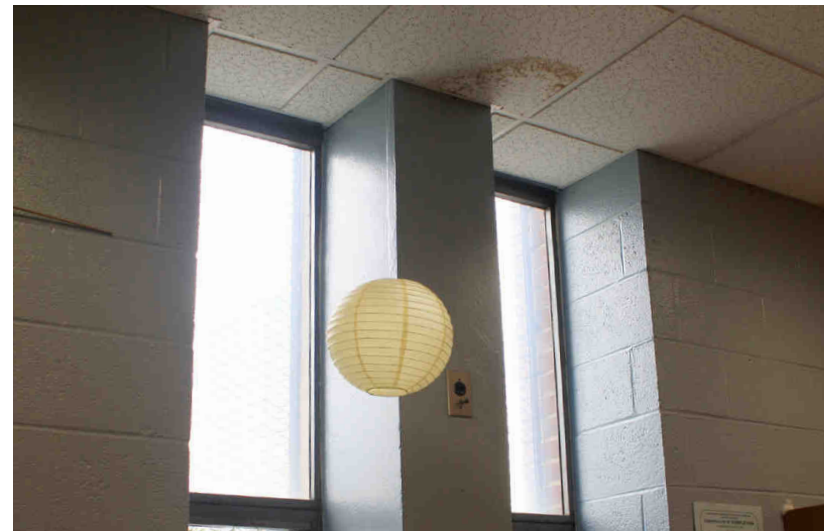
Diverse Population of adults, young childrens, teens and seniors

- Market Place
- Children Services
- Adult Services
- Multiple Meeting Spaces
- Staff
- Building Services



EXISTING LIBRARY / LIMITATIONS

- Outlived its functionality
- Program spaces disjointed, inadequate
- Floodplain concerns for existing basement
- Not up to current construction standards/practices
- Quality of space



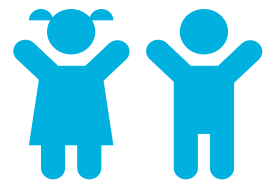
NEW LIBRARY / COMMUNITY NEEDS

OUTDOOR SPACE



- **Welcoming** entrance, canopy for weather protection,
- Connection between the playground and the library
- Outdoor programming space

CHILDREN'S AREA



- Area for **children's programs** – reading stories, show & tell
- **Exploratory** kids area
- Open **sight lines** in the children's area

MEETING SPACES



- Meeting rooms of **different sizes**
- Space for hosting **events** like book clubs
- **Acoustically** appropriate meeting rooms
- Quiet spaces to study or read

OTHER FEATURES



- **Technology**, more outlets and better WiFi
- More computers
- **Informal areas** for adults i.e., benches to have small conversations