

TAB C

REQUESTED RELIEF



2122 14TH STREET NW
WASHINGTON, DC

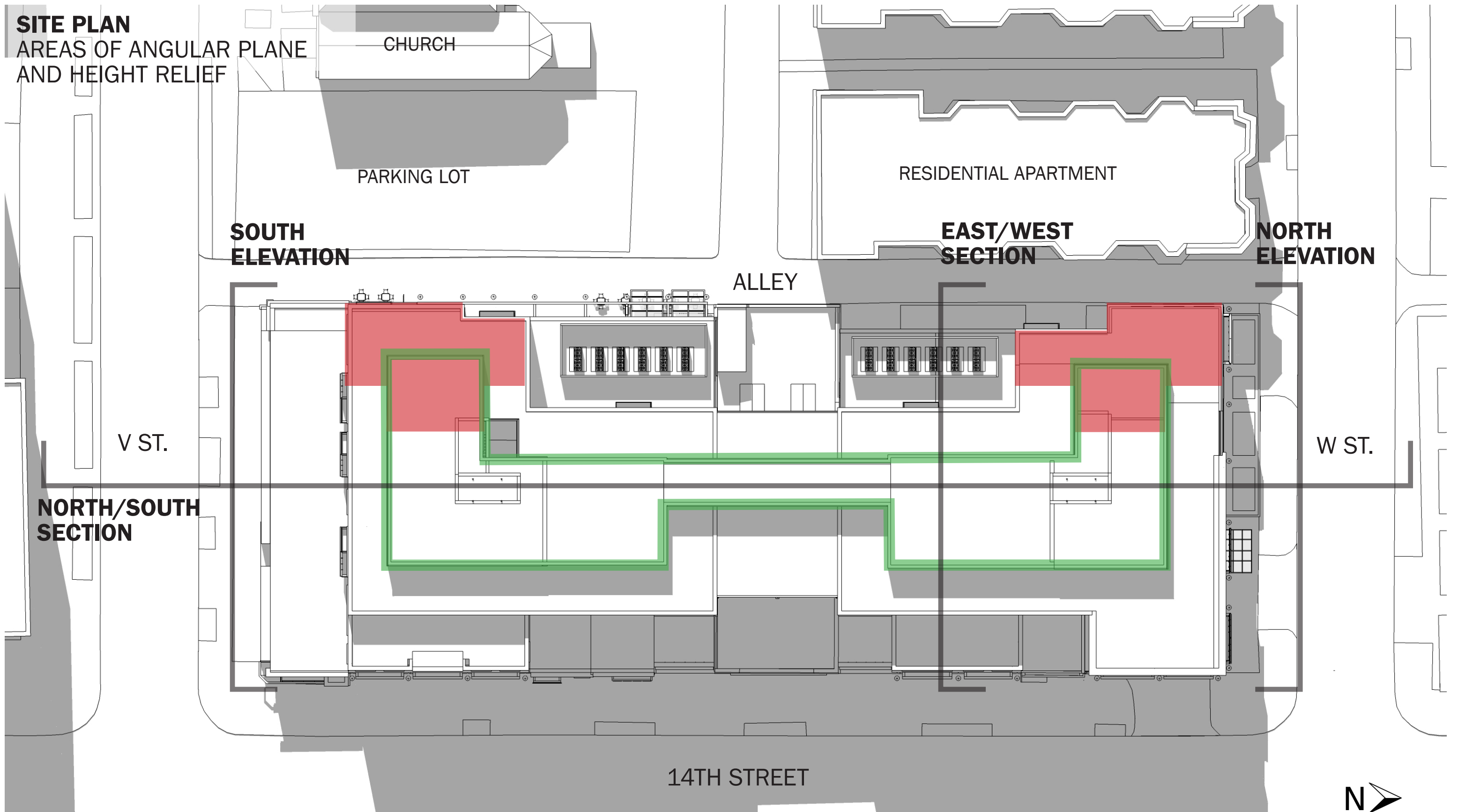
BZA SUBMISSION
DECEMBER 29, 2017

Perkins Eastman DC



SITE PLAN

AREAS OF ANGULAR PLANE
AND HEIGHT RELIEF

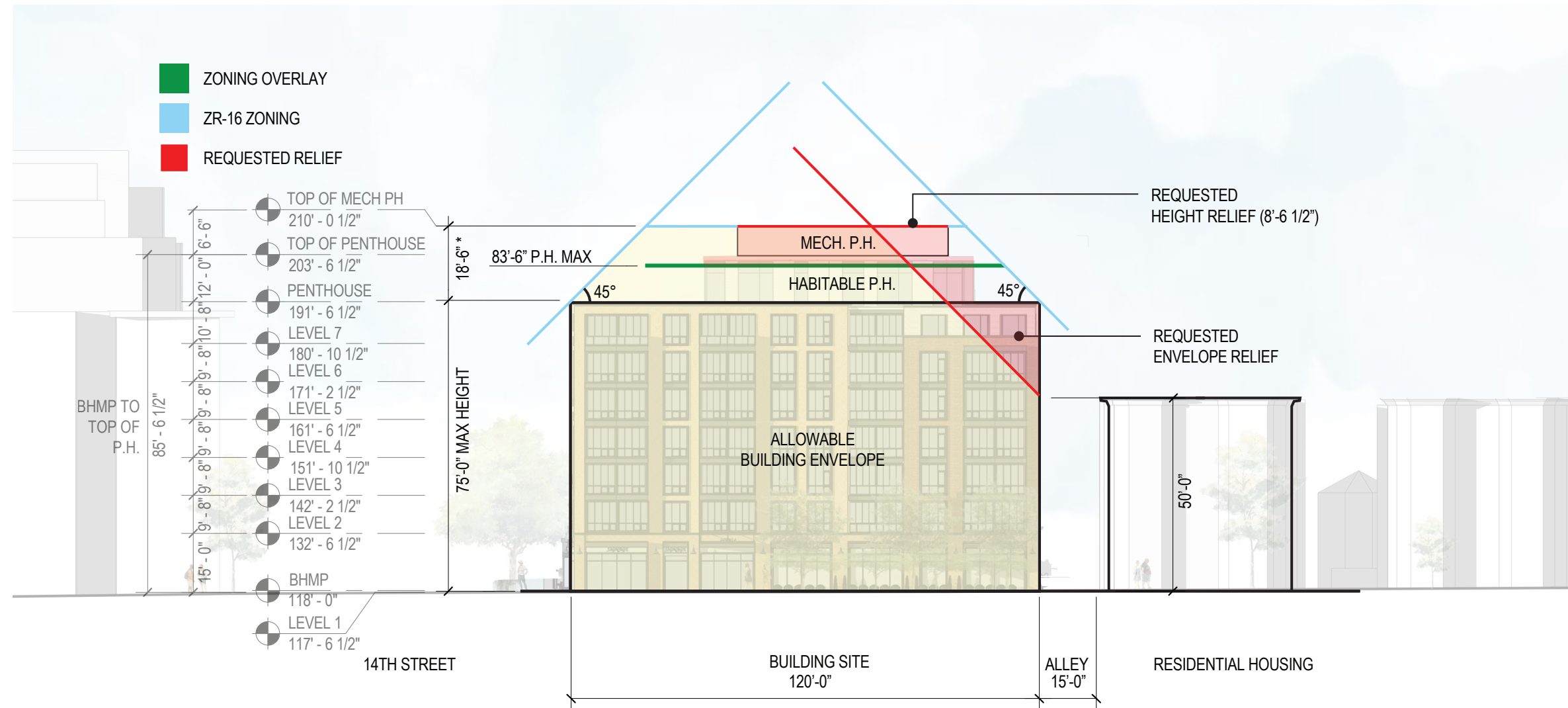
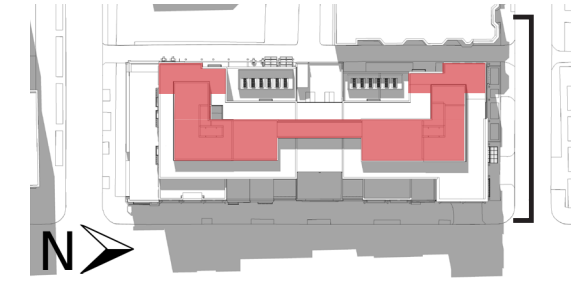


AREA OF ANGULAR PLANE RELIEF REQUESTED



AREA OF HEIGHT RELIEF REQUESTED

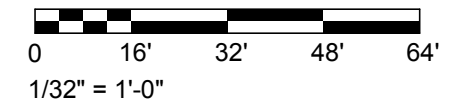
REQUESTED SETBACK RELIEF NORTH ELEVATION



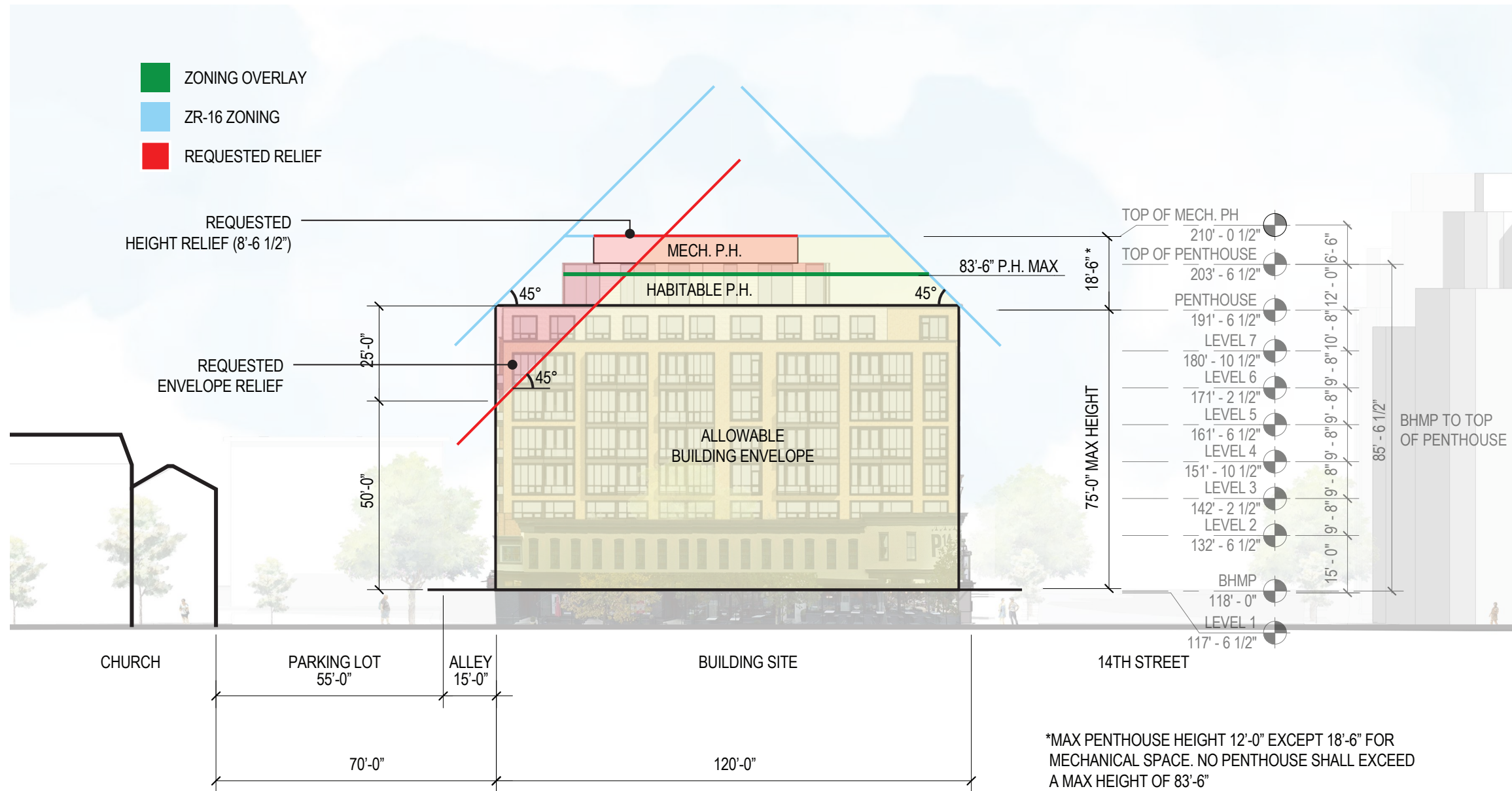
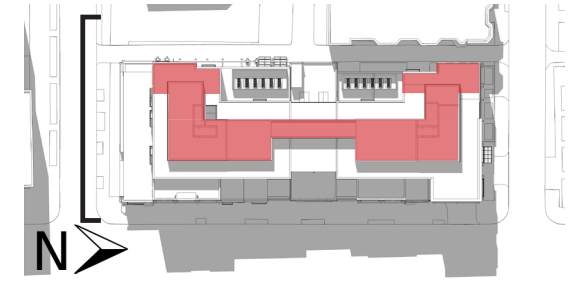
- ZONING OVERLAY
- ZR-16 ZONING
- REQUESTED RELIEF

- TOP OF MECH PH
210' - 0 1/2"
- TOP OF PENTHOUSE
203' - 6 1/2"
- PENTHOUSE
191' - 6 1/2"
- LEVEL 7
180' - 10 1/2"
- LEVEL 6
171' - 2 1/2"
- LEVEL 5
161' - 6 1/2"
- LEVEL 4
151' - 10 1/2"
- LEVEL 3
142' - 2 1/2"
- LEVEL 2
132' - 6 1/2"
- BHMP
118' - 0"
- LEVEL 1
117' - 6 1/2"

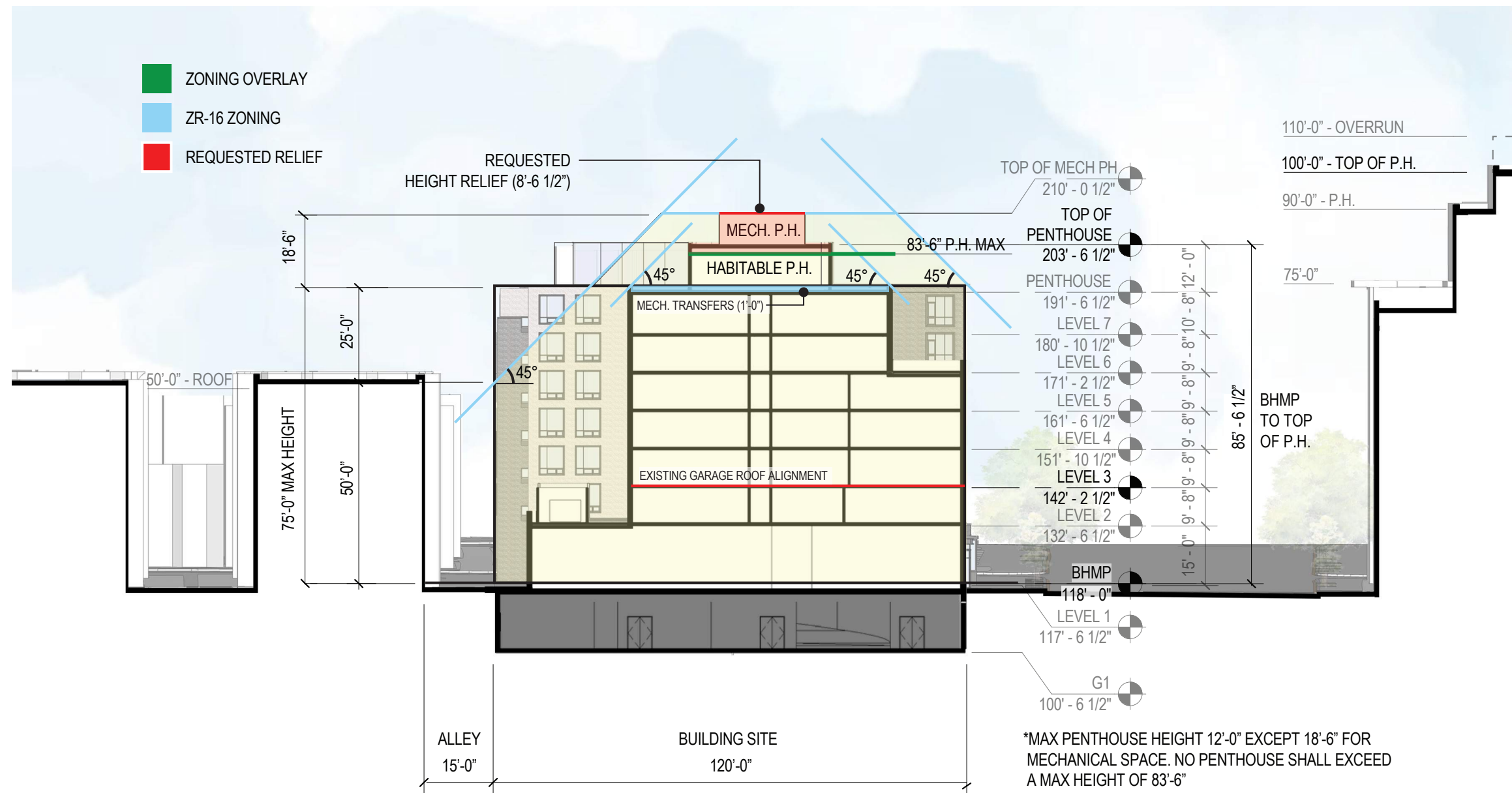
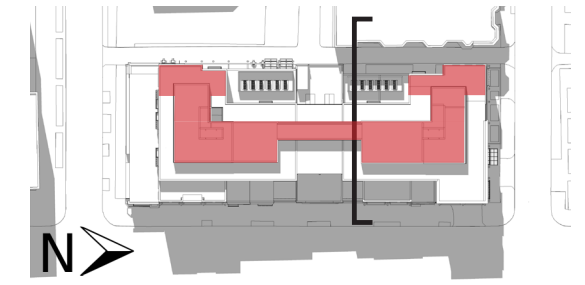
*MAX PENTHOUSE HEIGHT 12'-0" EXCEPT 18'-6" FOR MECHANICAL SPACE. NO PENTHOUSE SHALL EXCEED A MAX HEIGHT OF 83'-6"



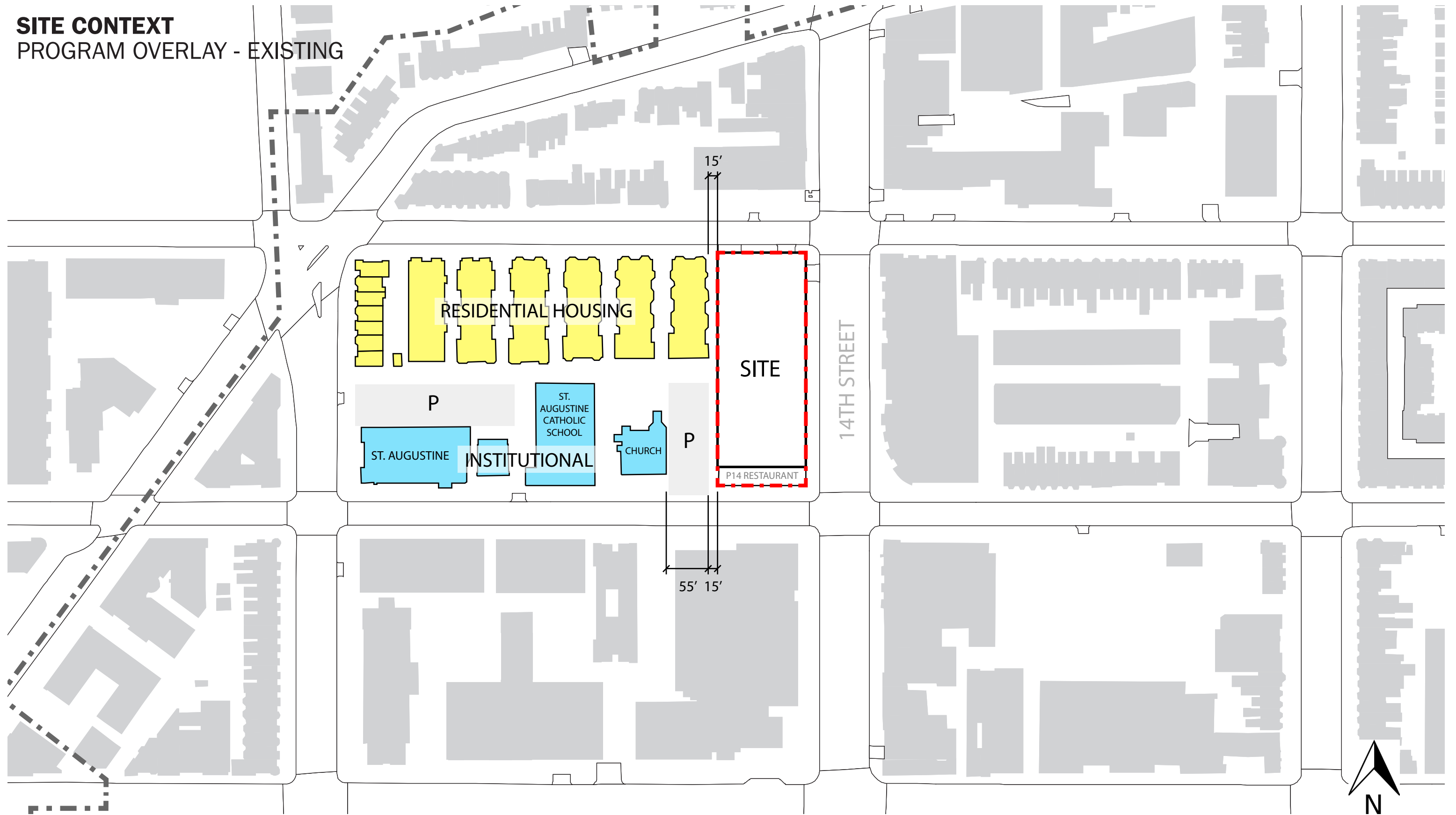
REQUESTED SETBACK RELIEF SOUTH ELEVATION



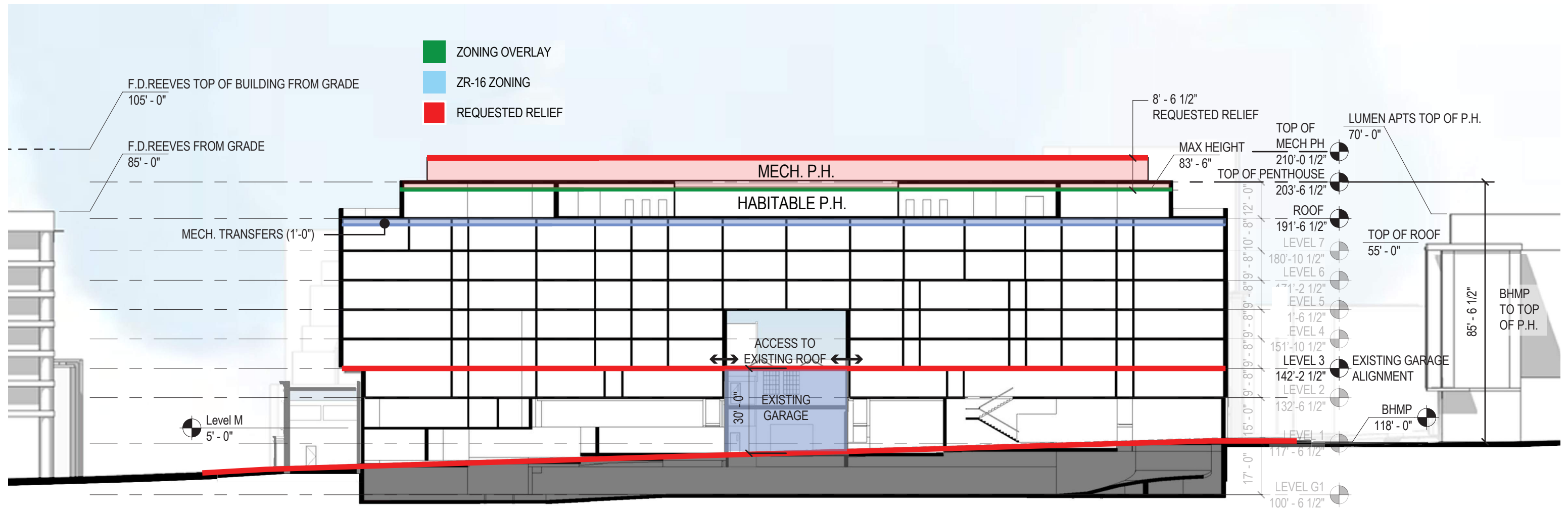
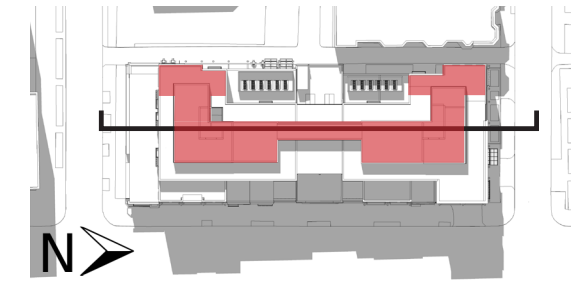
REQUESTED SETBACK RELIEF EAST-WEST SECTION



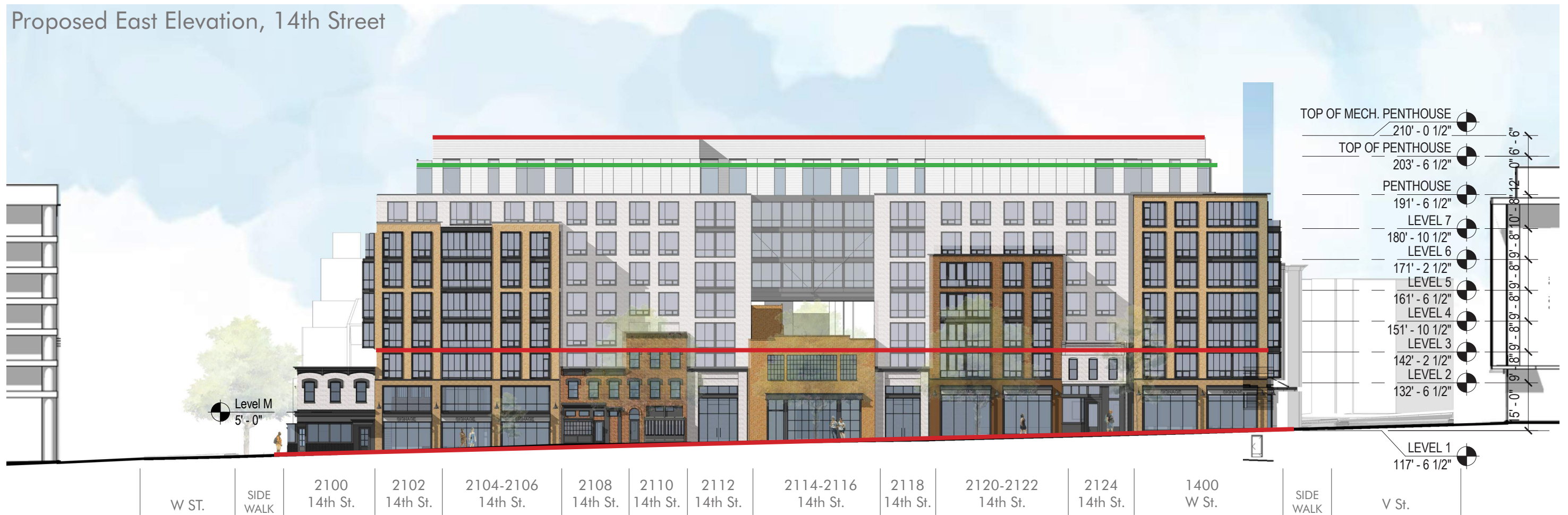
SITE CONTEXT
PROGRAM OVERLAY - EXISTING



REQUESTED SETBACK RELIEF NORTH-SOUTH SECTION



Proposed East Elevation, 14th Street



0 16' 32' 48' 64'
1/32" = 1'-0"