

SCALE: 1/8" = 1'-0"

Perkins Eastman DC

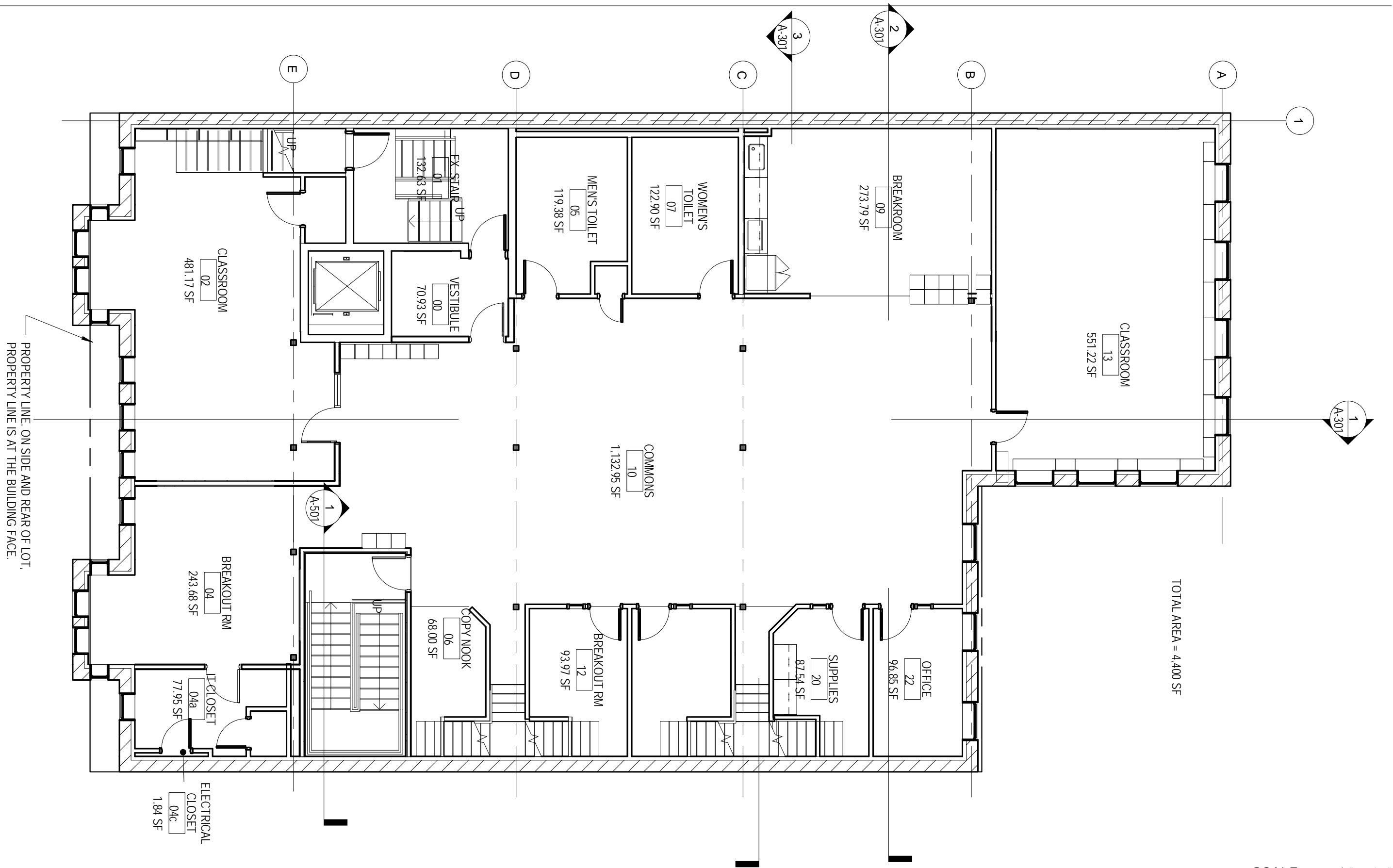
One Thomas Circle, NW Suite 270
 Washington, DC 20005
 (202) 861-1325

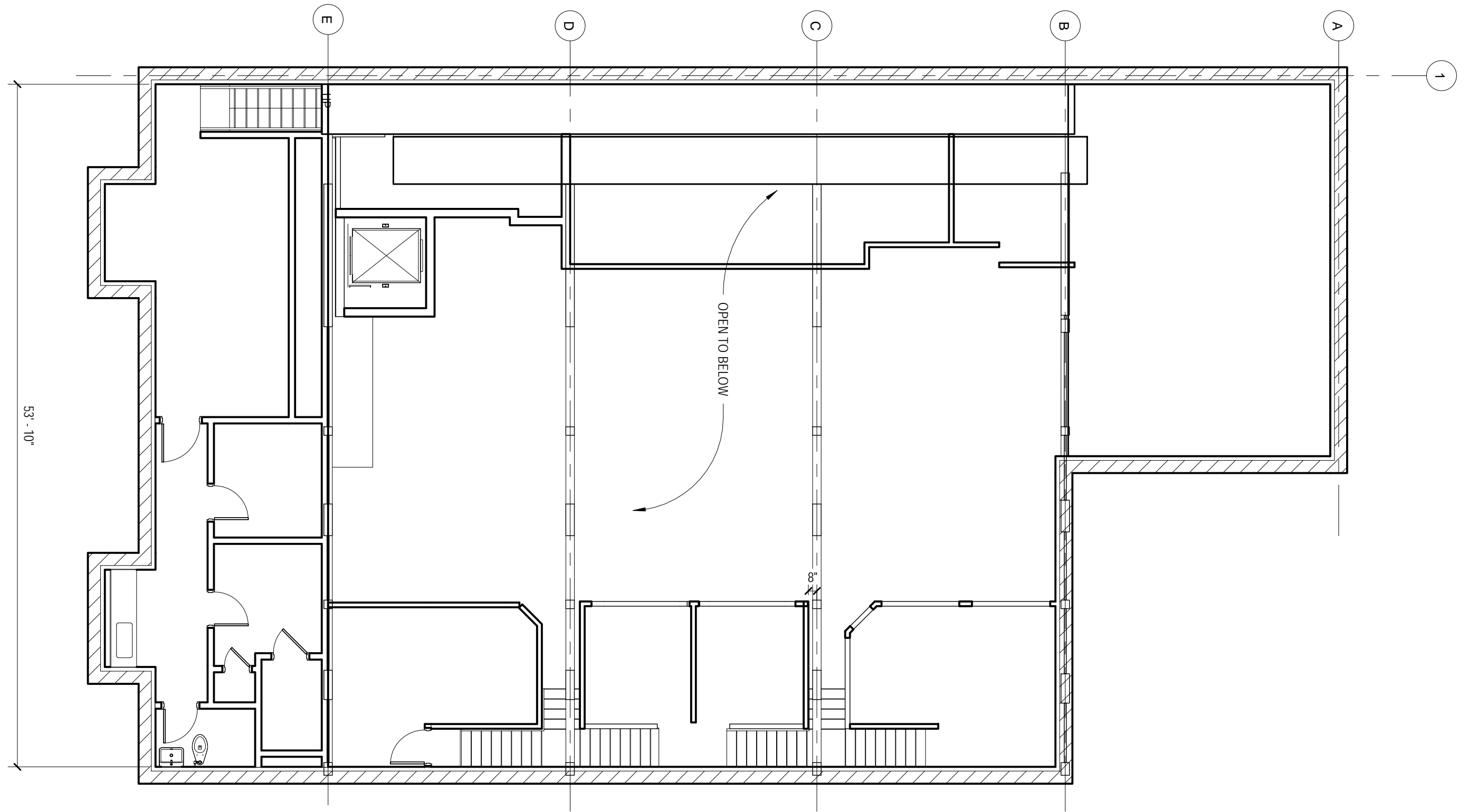
PROJECT: Capitol Hill Day School Middle School at Farrens Stable

DRAWING TITLE: EXISTING THIRD FLOOR PLAN

DATE: 18 DECEMBER 2017

Board of Zoning Adjustment
 District of Columbia
 CASE NO.:
 EXHIBIT N





SCALE: 1/8" = 1'-0"

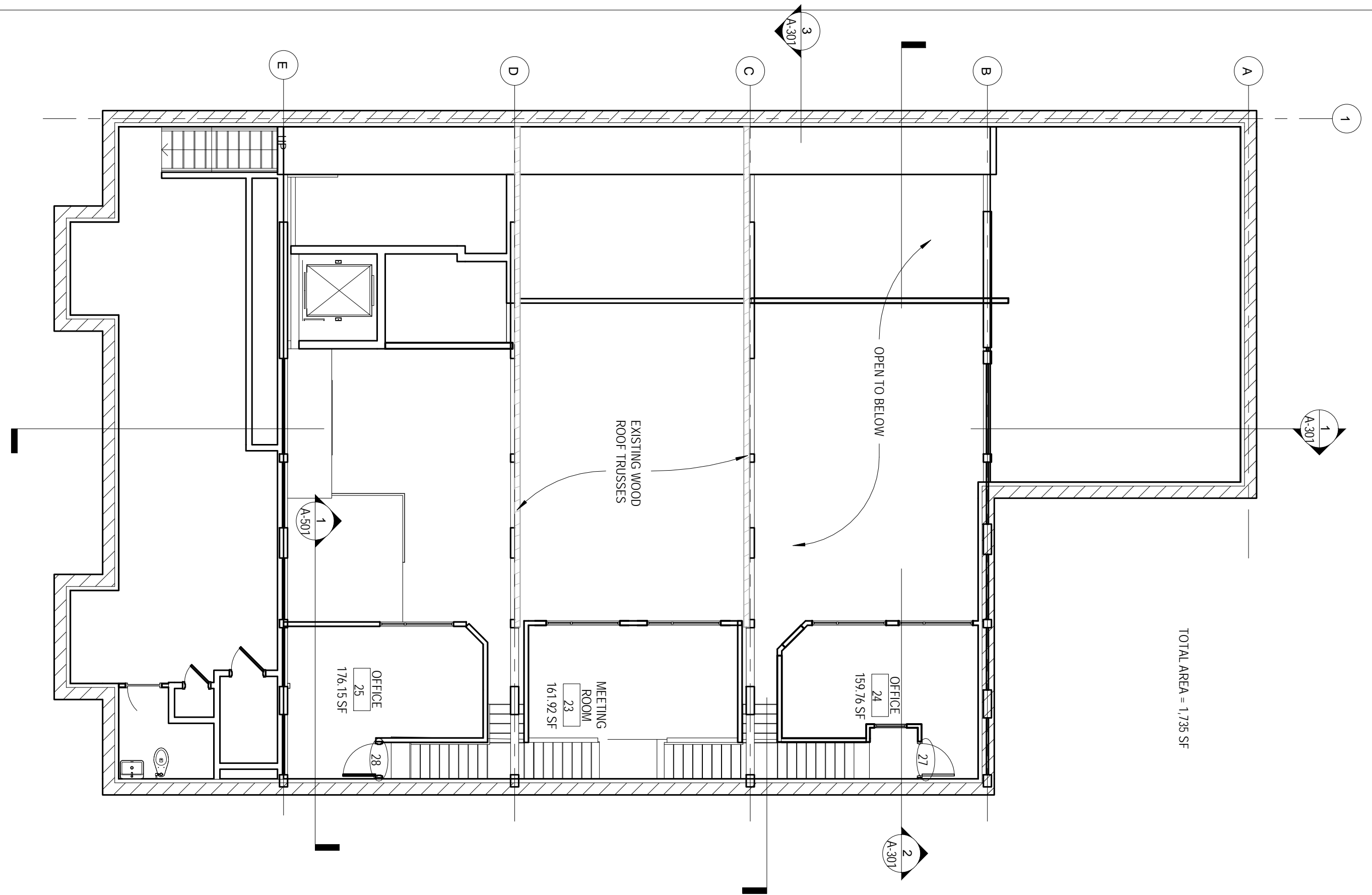
Perkins Eastman DC

One Thomas Circle, NW Suite 270
 Washington, DC 20005
 (202) 861-1325

PROJECT: Capitol Hill Day School Middle School at Farrens Stable

DRAWING TITLE: EXISTING MEZZANINE FLOOR PLAN

DATE: 11/08/17



TOTAL AREA = 1,735 SF

SCALE: 1/8" = 1'-0"

Perkins Eastman DC

PROJECT: Capitol Hill Day School Middle School at Farrens Stable

218 D Street SE, Washington DC

Square 763, Lot 2

DRAWING TITLE: PROPOSED MEZZANINE FLOOR PLAN

DATE: 18 DECEMBER 2017

One Thomas Circle, NW Suite 270
 Washington, DC 20005
 (202) 861-1325