



RICH MARKUS ARCHITECTS  
2601 P STREET NW 2ND FL  
WASHINGTON DC 20007  
202.333.2733  
www.richmarkusarchitects.com

1121 MORSE ST NE  
WASHINGTON, DC 20002

PROPOSED  
ELEVATION

1119 MORSE ST NE

1121 Morse St. NE  
Matter of Right

1 FRONT ELEVATION

Board of Zoning Adjustment  
District of Columbia  
CASE NO. 14635  
EXHIBIT NO. 65A  
A-103

REVISIONS

NTS

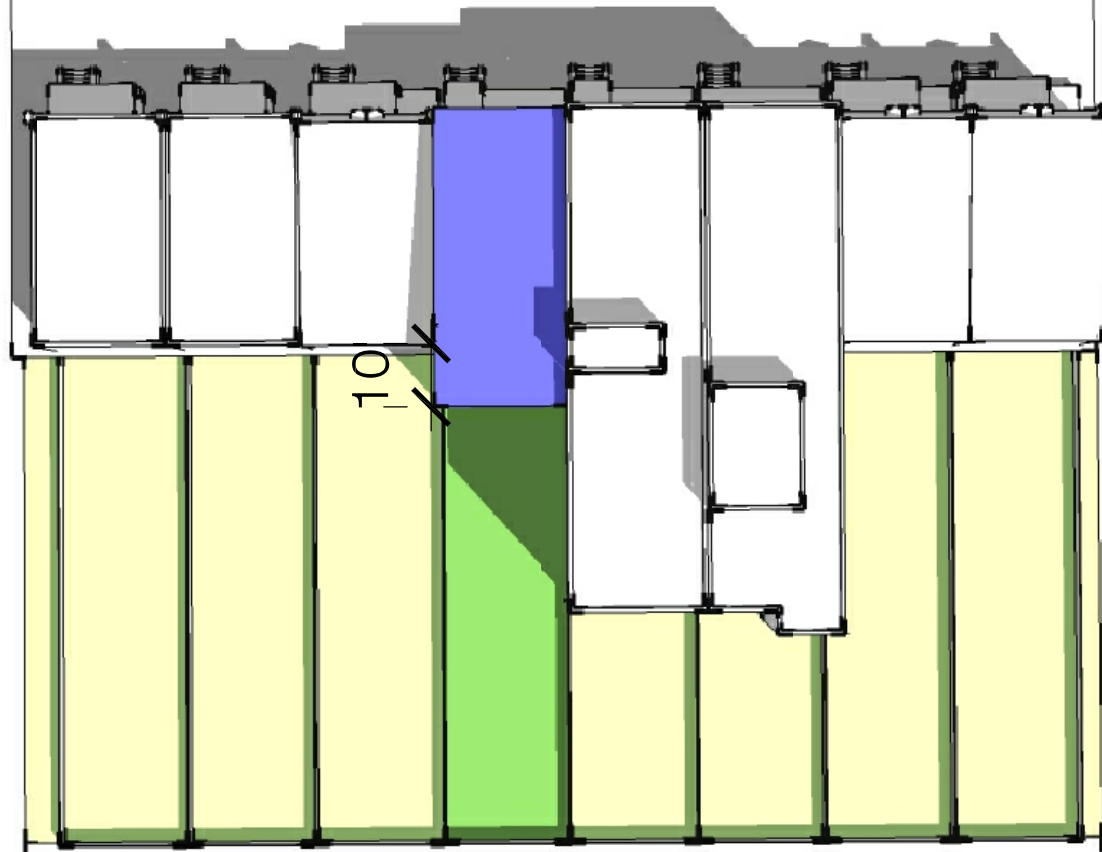
SCALE

12/27/2017

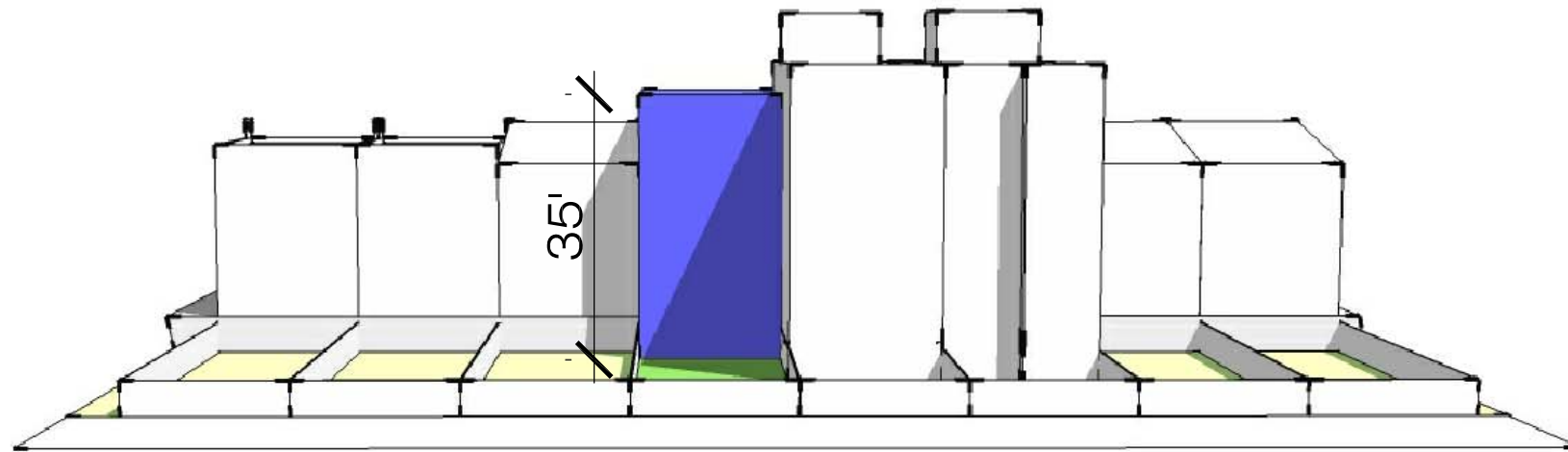
ISSUE

DRAWING NUMBER

1 TOP VIEW



2 REAR ELEVATION



RICH MARKUS ARCHITECTS  
2601 P STREET NW 2ND FL  
WASHINGTON DC 20007  
202.933.2733  
www.richmarkusarchitects.com

1121 MORSE ST NE  
WASHINGTON, DC 20002

PROPOSAL

REVISIONS

SCALE

12/27/2017  
ISSUE

A400  
DRAWING NUMBER