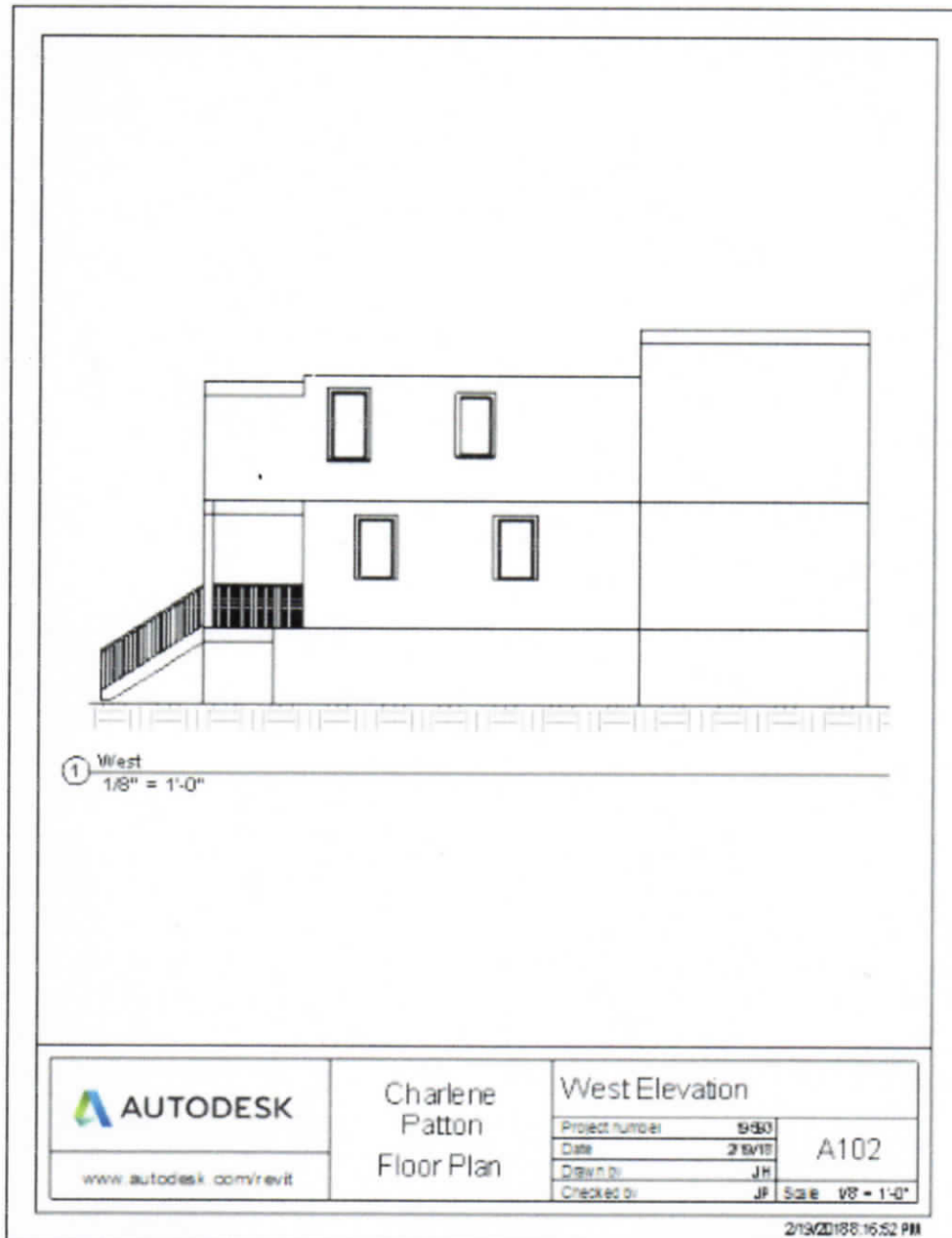


Attachment 1 – Charlene Patton West Elevation illustrating 4 west facing windows; compare Griffin Ex. 64 pp. 3-4 showing a single window.



<sup>1</sup> All measurements indicated herein were measured via laser tape measurer; were originally measured twice (December, 2017); and were recently re-measured (February, 2018) to ensure accuracy.

Attachment 1

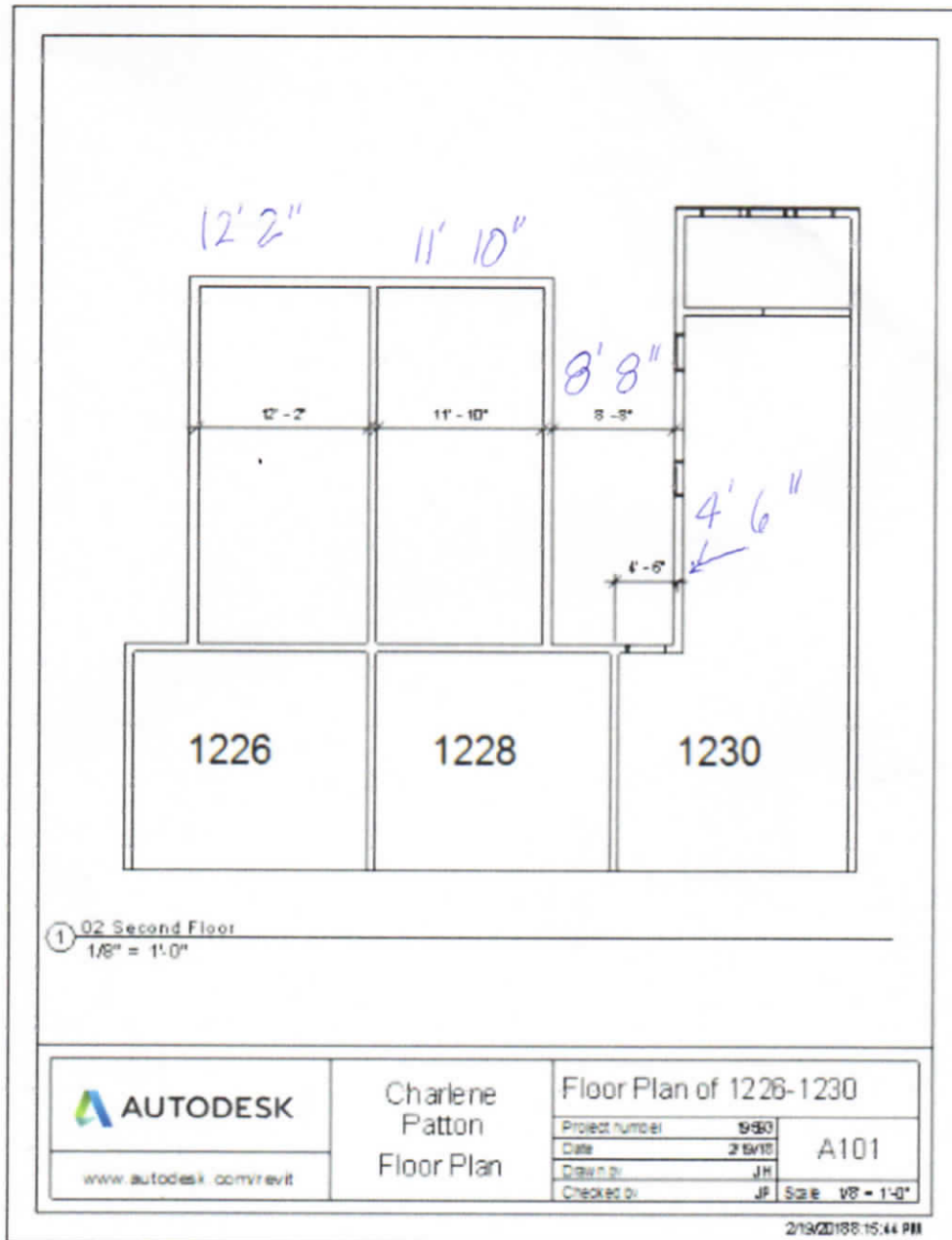
Board of Zoning Adjustment  
District of Columbia  
CASE NO. 19593  
EXHIBIT NO. 68A

Attachment 2 – view from one of Patton’s north facing window illustrating , there is 8’8” (exterior wall, face-to-face)<sup>1</sup> between Patton’s house and 1228; see also Attachment 3 for additional data and measurements; compare Griffin shade study depicting the east edge of 1228 property line as being flush with Patton’s west side property line.



Attachment 2

Attachment 3 - Patton model showing measurements and scale for review in conjunction with the review of Applicant's model.



Attachment 3