



Richardson

We're opening a brand new home in
Shaw in 2017.
Experience living in community in the
nation's capital.

Enter your email address

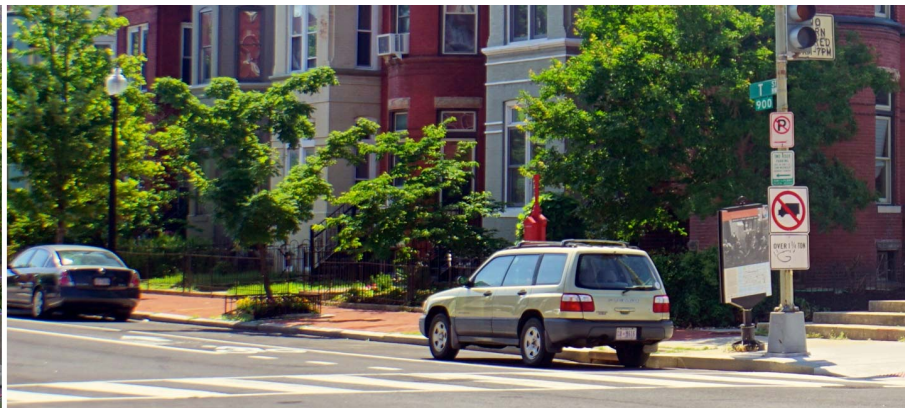
JOIN THE WAITLIST

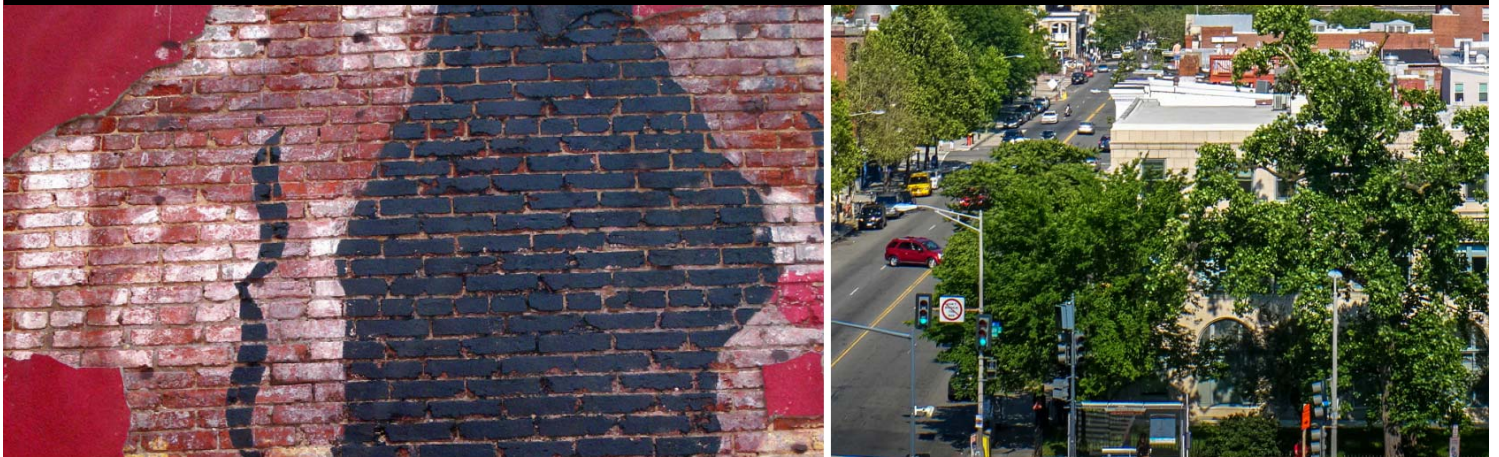
Immerse Yourself in Shaw



A Dash of History

Mostly developed in the 1900s, Shaw is lined with little pockets of the past. Cobblestone streets are juxtaposed with modern coffee shops, stores, and nightlife.





Colorful & Cozy

Experience Shaw's neighborly vibe with its humble residential streets and friendly, vibrant homes.

Shaw's residents include both newcomers and families that span generations, creating a unique charm that you won't find in other parts of Washington, DC.



Make yourself at home. Our newest DC residence will offer the same great experience you're used to. A cozy experience, spaces for cooking, dining and hanging make it the perfect place to create community.

Common Richardson consist of two flats, each with two units, with a maximum of six members in each unit.

We are only offering 6 and 12 month stays at Richardson, with a minimum stay of 6 months.

Common Richardson Pricing

12 month pricing starting at

\$1,700/Month

- ✓ FURNISHED
- ✓ ALL UTILITIES INCLUDED
- ✓ NO EXTRA FEES

Richardson is Coming Soon