

ST. PAUL'S TOWNHOUSE PARCEL

WASHINGTON, D.C.

BZA SUBMISSION

MAY 23, 2018

CLIENT

ELM STREET DEVELOPMENT
1355 BEVERLY ROAD, SUITE 240
MCLEAN, VA 22101
TEL: 703.734.9730
CONTACT: STEVE HORNE

BOUNDARY COMPANIES
4445 WILLARD AVE. #400
CHEVY CHASE, MD 20815
CONTACT: JOHN WILKINSON

ZONING ATTORNEY

GOULSTON & STORRS
1999 K STREET, NW
WASHINGTON, D.C. 20006
TEL: 202.721.0011
CONTACT: JEFF UTZ

ARCHITECT

W.C. RALSTON
3684 CENTERVIEW DRIVE, SUITE 110A
CHANTILLY, VA 20151
TEL: 703.667.7861
CONTACT: MATT TOWLE

CIVIL ENGINEER

VKA
8180 GREENSBORO DRIVE, SUITE 100
TYSONS, VA 22102
TEL: 703.442.7800
CONTACT: GHASSAN KHOURI

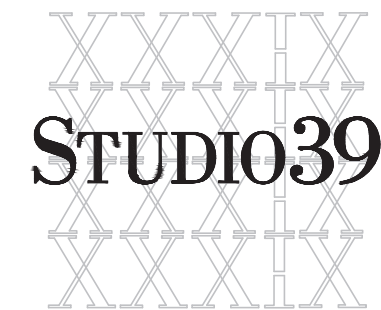
TRAFFIC CONSULTANT

GOROVE/SLADE
1140 CONNECTICUT AVE. NW
WASHINGTON, D.C. 20036
TEL: 202.296.8625
CONTACT: DAN VANPELT



VICINITY MAP
NOT TO SCALE

LANDSCAPE ARCHITECT



Landscape Architecture, P.C.

6416 GROVEDALE DRIVE, SUITE 100-A
ALEXANDRIA, VIRGINIA 22310
TEL: (703) 719-6500
FAX: (703) 719-6503
CONTACT: LH

Sheet List Table

Sheet Number	Sheet Title
L0.0	COVER
L0.1	GENERAL NOTES
L0.2	OVERALL PLAN
L1.01	HARDSCAPE PLAN 01
L2.01	HARDSCAPE DETAILS
L3.01	PRODUCT INFORMATION
L4.01	LANDSCAPE PLAN 01
L4.02	BIO-RETENTION ENLARGEMENT
L5.01	LANDSCAPE DETAILS
L6.01	STREETSCAPE SECTIONS - 01
L6.02	STREETSCAPE SECTIONS - 02
L6.03	STREETSCAPE SECTIONS - 03

REVISION INDEX

REVISION DATE	REVISED ITEM DESCRIPTION

THIS DOCUMENT, AND THE DESIGN AND DESIGN INCORPORATED HEREIN AS AN INSTRUMENT OF PROFESSIONAL SERVICE, IS THE PROPERTY OF STUDIO 39 LANDSCAPE ARCHITECTURE, P.C. AND IS NOT TO BE REPRODUCED OR TRANSMITTED IN ANY FORM OR BY ANY MEANS, ELECTRONIC OR MECHANICAL, INCLUDING PHOTOCOPYING, RECORDING, OR BY ANY INFORMATION STORAGE AND RETRIEVAL SYSTEM, WITHOUT THE WRITTEN AUTHORIZATION OF STUDIO 39 LANDSCAPE ARCHITECTURE, P.C.

© STUDIO 39 LANDSCAPE ARCHITECTURE, P.C.

COMMON ABBREVIATIONS

A	A/C	AIR CONDITIONING	I	ID	INSIDE DIAMETER
	AASHTO	AMERICAN ASSOCIATION OF STATE HWY & TRANSPORTATION OFFICIALS		INSTL	INSTALLATION
	AB	ANCHOR BOLT		INV	INVERT
	ABRSV	ABRASIVE		IP	IRON PIPE
	ABV	ABOVE	J	JST	JOIST
	AC	ACRE		JT	JOINT
	ACD	ACCESS DOOR	L	LAM	LAMINATED
	AD	AREA DRAIN		LB	POUND
	ADA	AMERICAN WITH DISABILITIES ACT		LBR	LUMBER
	ADEN	ADDENDA, ADDENDUM		LH	LEFT HAND
	ADD	ADDITIONAL		LOD	LIMITS OF DISTURBANCE
	ADH	ADHESIVE		LOS	LINE OF SIGHT
	ADJ	ADJACENT		LOW	LIMITS OF WORK
	ADJT	ADJUSTABLE		LTP	LIGHT POLE
	A-E	ARCHITECT-ENGINEER		LP	LOW POINT
	AFF	ABOVE FINISH FLOOR		LS	LANDSCAPE
	AFG	ABOVE FINISH GRADE		LT	LIGHT
	AGGR	AGGREGATE		LTG	LIGHTING
	ALUM	ALUMINUM		LVL	LEVEL
	ANSI	AMERICAN NATIONAL STANDARDS INSTITUTE	M	MAS	MASONRY
	APPROX	APPROXIMATE		MATL	MATERIAL
	APT	APARTMENT		MAX	MAXIMUM
	ASPH	ASPHALT		MECH	MECHANICAL
	ASTM	AMERICAN SOCIETY FOR TESTING & MATERIALS		MED	MEDIUM
	AVE	AVENUE		MET	METAL
				METB	METAL BASE
B	B&B	BALL AND BURLAP		MFG	MANUFACTURING
	BC	BOTTOM OF CURB, BOTTOM OF COLUMN		MH	MANHOLE
	BEAM	BEAM		MIN	MINIMUM
	BITUM	BITUMINOUS		MISC	MISCELLANEOUS
	BL	BASELINE		MLDG	MOLDING
	BLDG	BUILDING		MTG	MOUNTING
	BLK	BLOCK		MULL	MULLION
	BLVD	BOULEVARD		MUTCD	MANUAL OF UNIFORM TRAFFIC CONTROL DEVICES
	BM	BENCHMARK	N	N	NORTH
	BMP	BEST MANAGEMENT PRACTICES		N/A	NOT APPLICABLE
	BOC	BACK OF CURB		NIC	NOT IN CONTRACT
	BP	BREAK POINT		NO	NUMBER
	BRK	BRICK		NOM	NOMINAL
	BRKT	BRACKET		NTS	NOT TO SCALE
	BRL	BUILDING RESTRICTION LINE	O	OA	OVERALL
	BS	BOTTOM OF STEP		OC	ON CENTER
	BSMT	BASEMENT		OD	OUTSIDE DIAMETER
	BTWN	BETWEEN		OPNG	OPENING
	BW	BOTTOM OF WALL		OPT	OPTIONAL
	BEV	BEVEL		ORIG	ORIGINAL
C	CB	CATCH BASIN	P	PAR	PARALLEL
	CC	CENTER TO CENTER		PERP	PERPENDICULAR
	CEM	CEMENT		PI	POINT OF INTERSECTION
	CI	CAST IRON		PIE	PUBLIC IMPROVEMENT EASEMENT
	CIP	CAST IRON PIPE		PKWY	PARKWAY
	CIPC	CAST-IN-PLACE CONCRETE		PL	PROPERTY LINE
	CJ	CONTROL JOINT		PLBG	PLYUMING
	CL	CENTER LINE		PLYWD	PLYWOOD
	CLO	CLOSET		PNL	PANEL
	CLR	CLEAR		PNT	PAINT
	CMU	CONCRETE MASONRY UNIT		POB	POINT OF BEGINNING
	COL	COLUMN		PR	PAIR
	CONC	CONCRETE		PRCST	PRECAST
	CONN	CONNECTION		PRELIM	PRELIMINARY
	CONST	CONSTRUCTION		PRKG	PARKING
	CONT	CONTINUOUS		PROP	PROPOSED
	COORD	COORDINATE		PSF	POUNDS PER SQUARE FOOT
D	DF	DRINKING FOUNTAIN		PSI	POUNDS PER SQUARE INCH
	DIA	DIAMETER	R	PT	PRESSURE TREATED
	DIM	DIMENSION		PTD	PAINTED
	DIST	DISTANCE		PUE	PUBLIC UTILITY EASEMENT
	DR	DRIVE		PVMT	PAVEMENT
	DRN	DRAIN	R	R	RISER, RADIUS
	DWG	DRAWING		RC	REINFORCED CONCRETE
	DEMO	DEMOLITION		RD	ROAD
	DET	DETAIL		RDWY	ROADWAY
	DI	DROP INLET		REC	RECESSED
	DN	DOWN		REF	REFERENCE
	DS	DOWNSPOUT		REQD	REQUIRED
	DT	DRAIN TILE		RFD	ROOF DRAIN
	DWL	DOWEL		RH	RIGHT HAND
E	E	EAST		RIM	DRAIN INLET RIM ELEVATION
	EA	EACH		RLG	RAILING
	ELEC	ELECTRICAL		RM	ROOM
	ELEC P	ELECTRICAL PANEL		RND	ROUND
	ELEV	ELEVATION		ROW	RIGHT OF WAY
	ENCL	ENCLOSURE		RP	RADIUS POINT
	ENTR	ENTRANCE		RPA	RESOURCE PROTECTION AREA
	EP	EDGE OF PAVEMENT		RTE	ROUTE
	EQ	EQUAL	S	S	SOUTH
	EQL SP	EQUALLY SPACED		SD	SURFACE DRAIN
	EQUIP	EQUIPMENT		SECT	SECTION
	ESMT	EASEMENT		SGL	SINGLE
	ETD	EXISTING TO BE DEMOLISHED		SJ	SCORED JOINT
	ETR	EXISTING TO REMAIN		SLP	SLOPE
	ETRL	EXISTING TO BE RELOCATED		SM	SMOOTH
	ETRP	EXISTING TO BE REPLACED		SPEC	SPECIFICATION
	EW	EACH WAY		SQ FT	SQUARE FOOT
	EX	EXISTING		SQ IN	SQUARE INCH
	EXP	EXPANSION		SST	STAINLESS STEEL
	EXT	EXTERIOR		ST	STREET
F	FAR	FLOOR AREA RATIO		STA	STATION POINT
	FBD	FIBER BOARD		STD	STANDARD
	FD	FLOOR DRAIN		STL	STEEL
	FDN	FOUNDATION		STM	STORM DRAIN
	FFE	FINISHED FLOOR ELEVATION		SW	SIDEWALK
	FIN	FINISH		SWM	STORM WATER MANAGEMENT
	FIN FL	FINISH FLOOR	T	T&G	TONGUE AND GROOVE
	FIN GR	FINISH GRADE		TC	TOP OF CURB, TOP OF COLUMN
	FN	FENCE		TD	TRENCH DRAIN
	FOC	FRONT OF CURB		TEMP	TEMPORARY
	FT	FOOTING		TS	TOP OF STEP
	FTG	FOOTING		TW	TOP OF WALL
	FUT	FUTURE		TXT	TEXT
	FXTR	FIXTURE		TYP	TYPICAL
G	GA	GAUGE	U	UNFIN	UNFINISHED
	GAB	GRADED AGGREGATE BASE	V	VERT	VERTICAL
	GALV	GALVANIZED	W	W	WEST
	GC	GENERAL CONTRACTOR		WD	WOOD
	GDR	GUARD RAIL		WI	WROUGHT IRON
	GFA	GROSS FLOOR AREA		WLD	WELDED
	GIP	GALVANIZED IRON PIPE		WP	WATER PROOFING
	GL	GLASS		WR	WATER RESISTANT
	GP	GUTTER PAN		WWM	WELDED WIRE MESH
	GVL	GRAVEL		WWR	WELDED WIRE REINFORCEMENT
H	HB	HOSE BIBB	Y	YD	YARD DRAIN
	HC	HANDICAP PARKING SPACE			
	HDOPE	HIGH DENSITY POLYETHYLENE PIPE			
	HDWD	HARDWOOD			
	HDWE	HARDWARE			
	HT	HEIGHT			
	HNDRL	HANDRAIL			
	HORZ	HORIZONTAL			
	HP	HIGH POINT			
	HS	HARDSCAPE			

PROFESSIONAL TITLES

ARCH	ARCHITECT
CIVIL	CIVIL ENGINEER
ENGR	ENGINEER
GC	GENERAL CONTRACTOR
ID	INTERIOR DESIGNER
MEP	MECHANICAL/ELECTRICAL/PLUMBING
LA	LANDSCAPE ARCHITECT
LC	LANDSCAPE CONTRACTOR
STR	STRUCTURAL ENGINEER

MATERIAL GRAPHICS

	CONCRETE		FABRIC SEPARATOR
	COMPACTED AGGREGATE SUB-BASE		STEEL / IRON
	SAND		ALUMINUM
	MORTAR		BRASS / BRONZE / COPPER
	MORTAR NEXT TO SAND SETTING BED		WOOD
	BRICK / PAVER		MULCH
	DRAINAGE GRAVEL		PLASTIC
	SOIL / COMPACTED SOIL / UNDISTURBED SUBGRADE		ARCHITECTURAL PRECAST
	STRUCTURAL / PLANTING / LIGHTWEIGHT SOIL		WELDED WIRE REINFORCEMENT
	EXPANSION JOINT W/ BACKER ROD		CMU
	REBAR		RIGID INSULATION W/ OPEN JOINTS FOR DRAINAGE
	STONE		BRICK / CONCRETE PAVER RUNNING BOND
	ASPHALT CONCRETE W/ NEOPRENE TACK COAT		BRICK / CONCRETE PAVER HERRINGBONE

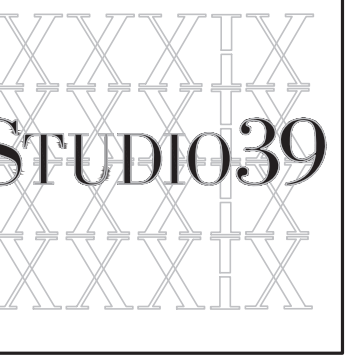
LEGEND

	EXISTING INTERMEDIATE CONTOUR
	EXISTING INDEX CONTOUR
	PROPOSED INTERMEDIATE CONTOUR
	PROPOSED INDEX CONTOUR
	EXISTING SPOT GRADE
	PROPOSED SPOT GRADE
	ELEVATION
	STATION POINT
	EASEMENT (PUE, PIE, ETC.)
	CENTER LINE
	PROPERTY LINE
	RIGHT OF WAY
	LOT LINE
	CENTER LINE OF SWALE
	EXPANSION JOINT
	STEP
	EXISTING LIGHT
	PROPOSED POLE LIGHT
	PROPOSED PEDESTRIAN LIGHT
	PROPOSED WALL LIGHT
	PROPOSED BOLLARD
	PROPOSED FOUNTAIN LIGHT
	PROPOSED FLOODLIGHT
	PROPOSED UPLIGHT
	PROPOSED STEP LIGHT
	SLAB DRAIN
	SURFACE DRAIN / YARD DRAIN
	TRENCH DRAIN
	PLANT CALLOUT
	MATERIAL OR DETAIL CALLOUT
	ELEVATION CALLOUT
	SECTION CALLOUT

GENERAL NOTES

GENERAL LAYOUT NOTES:

- BASE TOPOGRAPHICAL AND EXISTING CONDITIONS TAKEN FROM DRAWING FURNISHED BY VKA.
- DRAWINGS PREPARED FROM CIVIL AND ARCHITECTURAL DRAWINGS, NOT AS-BUILT DATA PREPARED BY VKA, DATED 2018.01.23, AND PREPARED BY W.C. RALSTON, DATED 2018.01.23.
- UTILITY WORK IS NOT INDICATED ON THIS DRAWING. REFER TO CIVIL DRAWINGS FOR WORK RELATED TO UTILITIES.
- DO NOT SCALE THESE DRAWINGS.
- DIMENSIONS ARE FROM BACK OF CURB, TO FACE OF WALL, TO OUTSIDE EDGE OF PAVEMENTS; FROM COLUMN CENTERLINES TO HARDSCAPE CENTERLINES, TO CENTERLINE OF PAVEMENTS, TO OUTSIDE EDGE OF PAVEMENTS, TO CENTERLINES OF STAIRS; FROM EDGE OF PAVEMENT TO FACE OF WALL UNLESS OTHERWISE SPECIFIED.
- ALL CURVES TO BE TRUE RADII WITHOUT STRAIGHT SEGMENTS.
- ALL ANGLES ARE 90° UNLESS OTHERWISE NOTED.
- CHANGES IN LAYOUT MAY BE MADE AT THIS TIME TO ACCOMMODATE DESIGN INTENT OR FIELD CONDITIONS. NO ADDITIONAL PAYMENT WILL BE MADE TO THE CONTRACTOR FOR THIS WORK.
- CONTRACTOR TO NOTIFY LANDSCAPE ARCHITECT IMMEDIATELY OF ANY DISCREPANCIES FOUND IN PLANS AND ANY CONFLICTS ENCOUNTERED IN FIELD.
- QUANTITIES REFERENCED IN PLANS ARE SHOWN AS A COURTESY ONLY. CONTRACTOR IS RESPONSIBLE FOR VERIFYING ALL QUANTITIES.
- CONTRACTOR SHALL VERIFY ALL DIMENSIONS PRIOR TO CONSTRUCTION.
- ALL WALLS, SIDEWALKS, PATHWAYS, FENCES, AND STAIRWAYS SHALL BE COMPLETELY LAID OUT AND STAKED WITH VISIBLE MARKERS. THE STAKES SHALL BE APPROVED IN THE FIELD BY LANDSCAPE ARCHITECT PRIOR TO CONSTRUCTION. THE CONTRACTOR SHALL NOTIFY LANDSCAPE ARCHITECT 48 HOURS PRIOR TO SITE VISIT.
- CONTRACTOR IS RESPONSIBLE FOR ALL WIRING, CONDUIT, FOOTINGS, PERMITS, ETC. NECESSARY TO COMPLETE SITE LIGHTING INSTALLATION. CONTRACTOR TO COORDINATE POWER CONNECTIONS WITH ELECTRICAL ENGINEER AND OWNER.
- BENCH AND LITTER RECEPTACLE LAYOUT SHOWN IS APPROXIMATE. LAYOUT TO BE APPROVED IN THE FIELD BY LANDSCAPE ARCHITECT.



Landscape Architecture, P.C.

6416 Grandville Drive, Suite 100-A
Alexandria, Virginia 22310
Tel: 703.719.6500 Fax: 703.719.6503
Email: frontdesk@studio39.com

ST. PAUL'S TOWNHOUSE PARCEL
WASHINGTON, D.C.
ELM STREET DEVELOPMENT, INC.

THIS DOCUMENT AND THE IDEAS AND DESIGN INCORPORATED HEREIN ARE THE PROPERTY OF PROFESSIONAL SERVICE 39, INC. TO BE USED ONLY FOR THE PROJECT AND SITE SPECIFICALLY IDENTIFIED HEREIN. ANY REUSE OR REPRODUCTION OF THIS DOCUMENT WITHOUT THE WRITTEN PERMISSION OF STUDIO 39 LANDSCAPE ARCHITECTURE, P.C. IS PROHIBITED.

REVISIONS:

GENERAL NOTES

DESIGN: LH
DRAWN: PT
CHECKED: LH

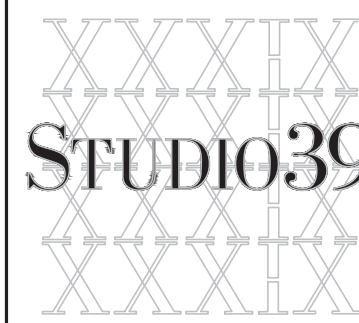
SCALE: Viewport Scale

PROJECT NO: 15074

DATE: 05.23.2018

L0.1

BZA SUBMISSION



Landscape Architecture, P.C.

6416 Greenfield Drive, Suite 100-A
Alexandria, Virginia 22310
Tel: 703.719.6500 Fax: 703.719.6503
Email: frontdesk@studio39.com

ST. PAUL'S TOWNHOUSE PARCEL

WASHINGTON, D.C.

ELM STREET DEVELOPMENT, INC.

THIS DOCUMENT AND THE IDEAS AND DESIGN INCORPORATED HEREIN ARE THE PROPERTY OF PROFESSIONAL SERVICE ST. PAUL'S TOWNHOUSE PARCEL, A DIVISION OF ELM STREET DEVELOPMENT, INC. NO PART OF THIS DOCUMENT IS TO BE COPIED OR REPRODUCED IN ANY MANNER WITHOUT THE WRITTEN PERMISSION OF STUDIO 39 LANDSCAPE ARCHITECTURE, P.C.

© STUDIO 39 LANDSCAPE ARCHITECTURE, P.C.

REVISIONS:

OVERALL PLAN

DESIGN: LH
DRAWN: PT
CHECKED: LH

SCALE: 1" = 60'-0"

0 30 60 120

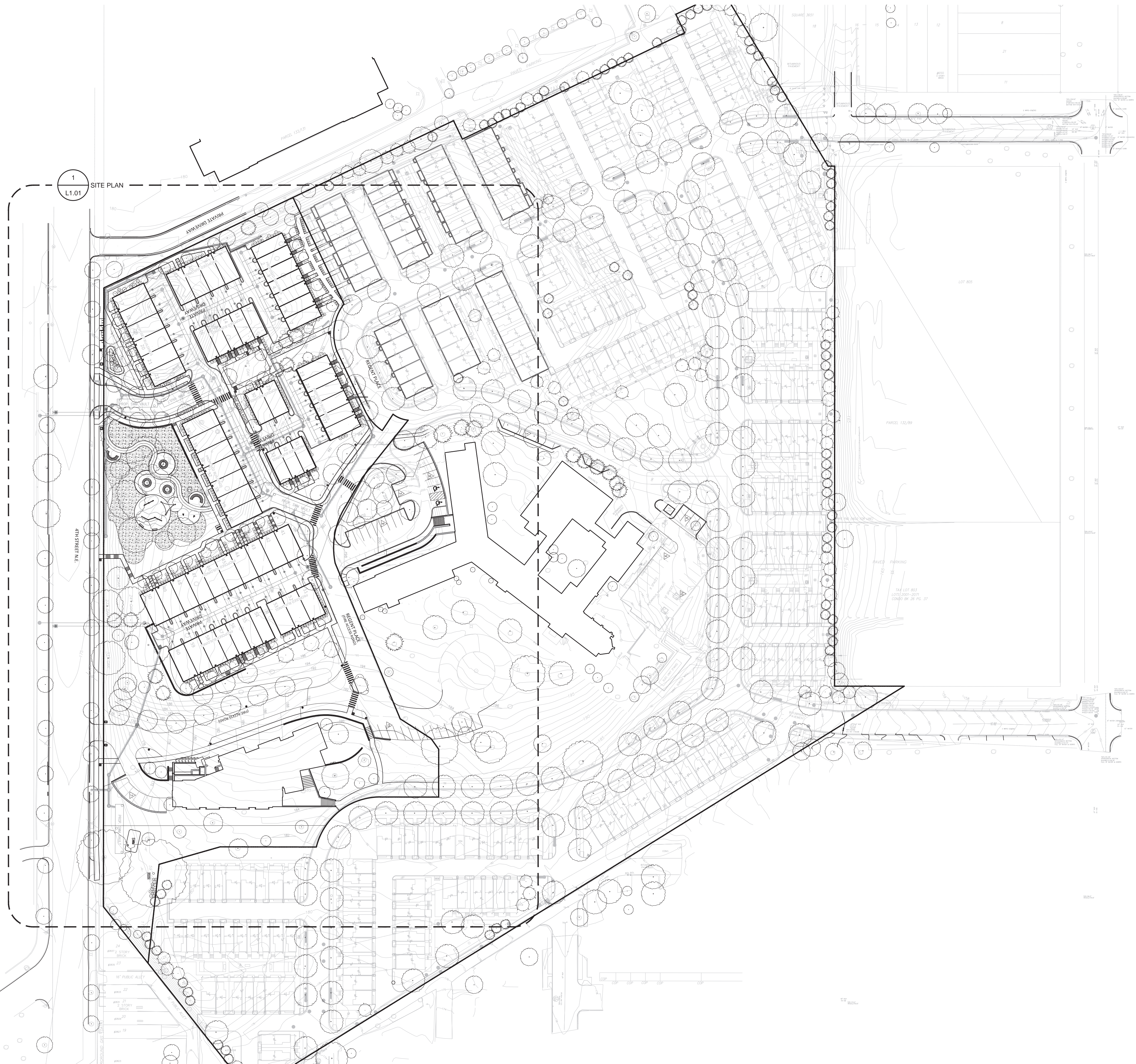
PROJECT NO: 15074

DATE: 05.23.2018

L0.2

BZA SUBMISSION

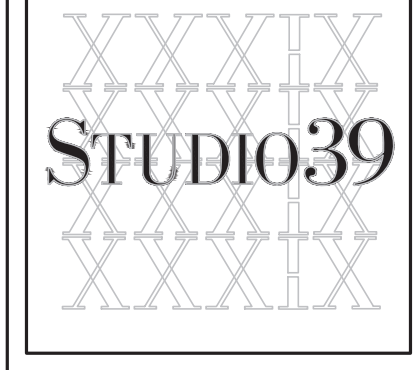
NOT RELEASED FOR CONSTRUCTION



1
L1.01 SITE PLAN

1
L0.2 OVERALL PLAN
Scale: 1" = 60'-0"

PLAN



Landscape Architecture, P.C.
 6416 Greenfield Drive, Suite 100-A
 Alexandria, Virginia 22310
 Tel: 703.719.6500 Fax: 703.719.6503
 Email: frontdesk@studio39.com

ST. PAUL'S TOWNHOUSE PARCEL
 WASHINGTON, D.C.
 ELM STREET DEVELOPMENT, INC.

THIS DOCUMENT AND THE IDEAS AND DESIGN INCORPORATED HEREIN ARE THE PROPERTY OF PROFESSIONAL SERVICE ST. PAUL'S TOWNHOUSE DEVELOPMENT, INC. AND ARE NOT TO BE REPRODUCED OR TRANSMITTED IN ANY FORM OR BY ANY MEANS, ELECTRONIC OR MECHANICAL, INCLUDING PHOTOCOPYING, RECORDING, OR BY ANY INFORMATION STORAGE AND RETRIEVAL SYSTEM, WITHOUT THE WRITTEN PERMISSION OF STUDIO 39 LANDSCAPE ARCHITECTURE, P.C.

REVISIONS:

HARDSCAPE PLAN 01

DESIGN: LH
 DRAWN: PT
 CHECKED: LH

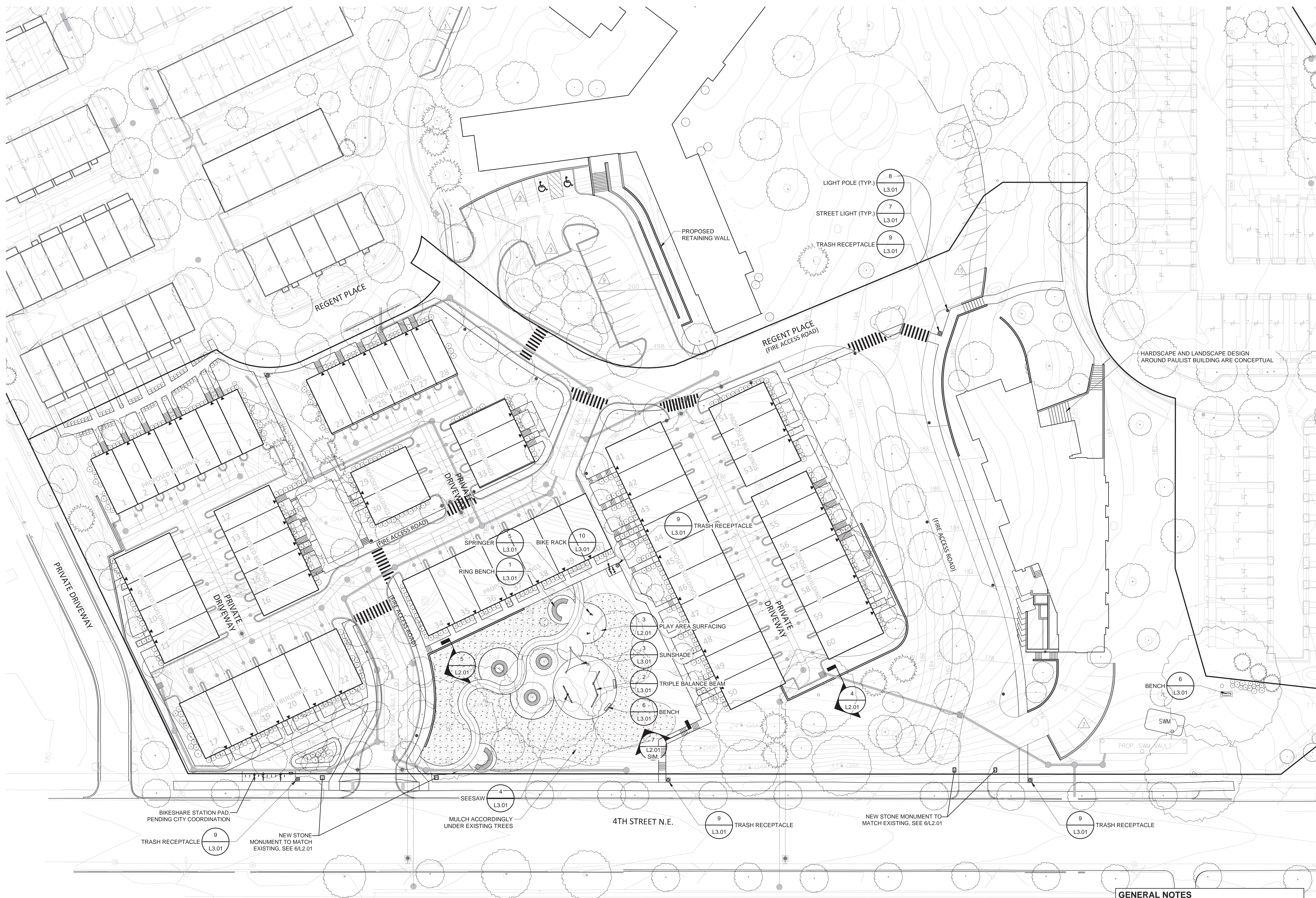
SCALE: 1" = 30'-0"

PROJECT NO: 15074
 DATE: 05.23.2018

L1.01

BZA SUBMISSION

NOT RELEASED FOR CONSTRUCTION



1 SITE PLAN
 Scale: 1" = 30'-0"

PLAN

P:\2018\15074 saint pauls\6.0 cad files\6.0 submission\L1.01 HARDSCAPE PLAN 01.dwg

REVISIONS:

HARDSCAPE DETAILS

DESIGN: LH
DRAWN: PT
CHECKED: LH

SCALE: Viewport Scale

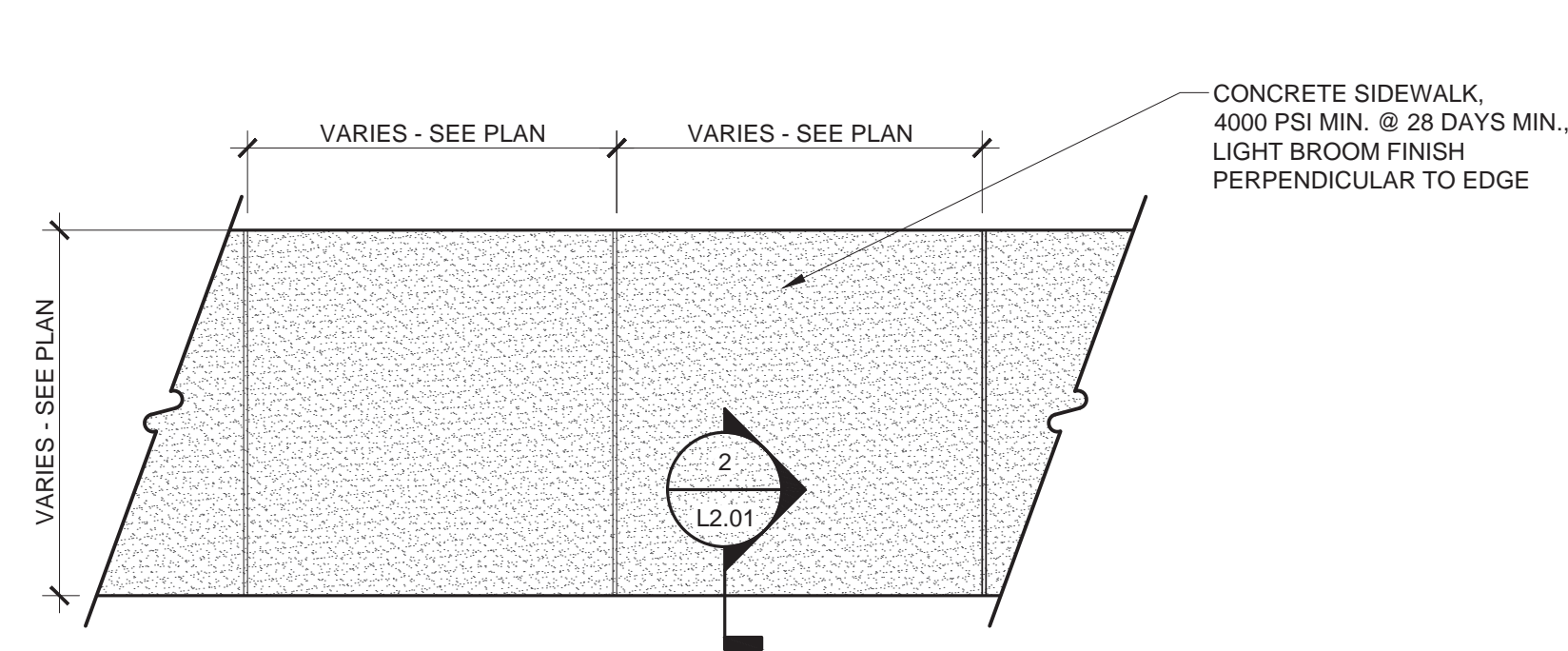
PROJECT NO: 15074

DATE: 05.23.2018

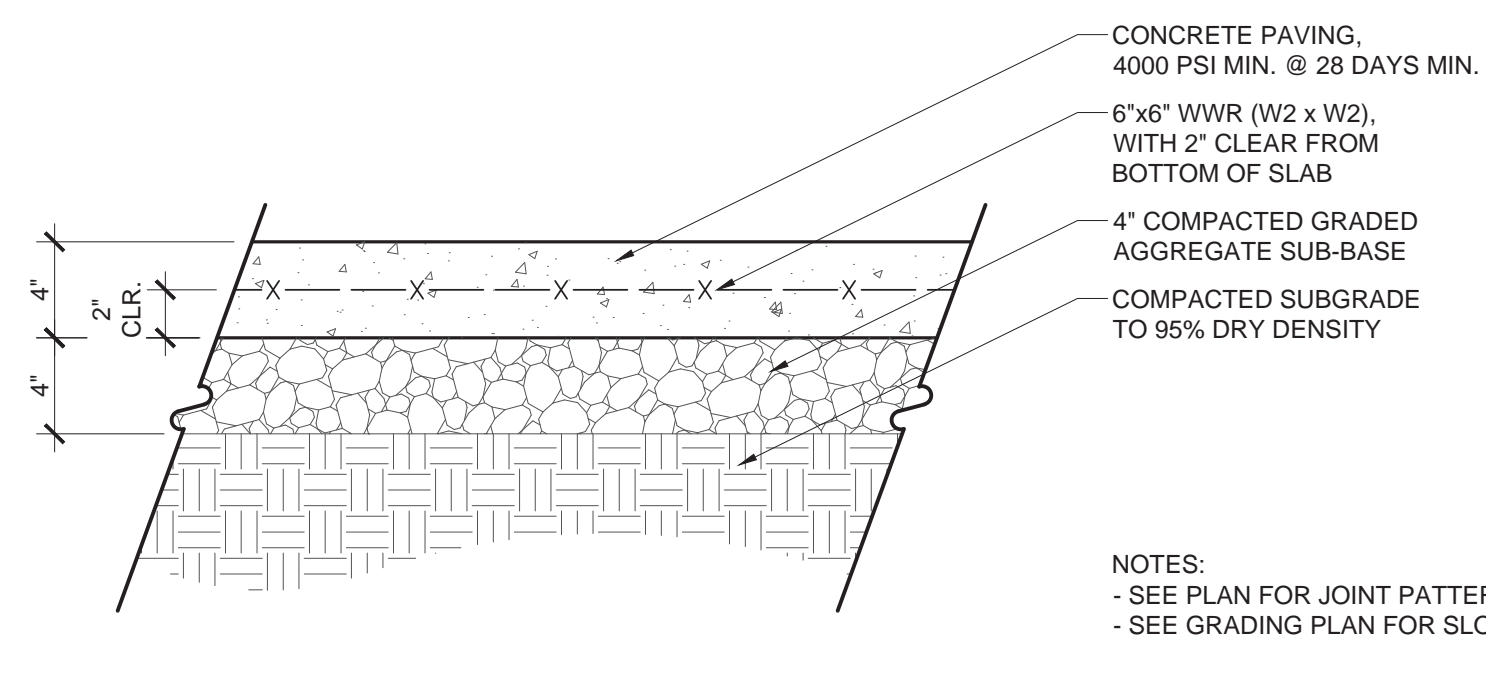
L2.01

BZA SUBMISSION

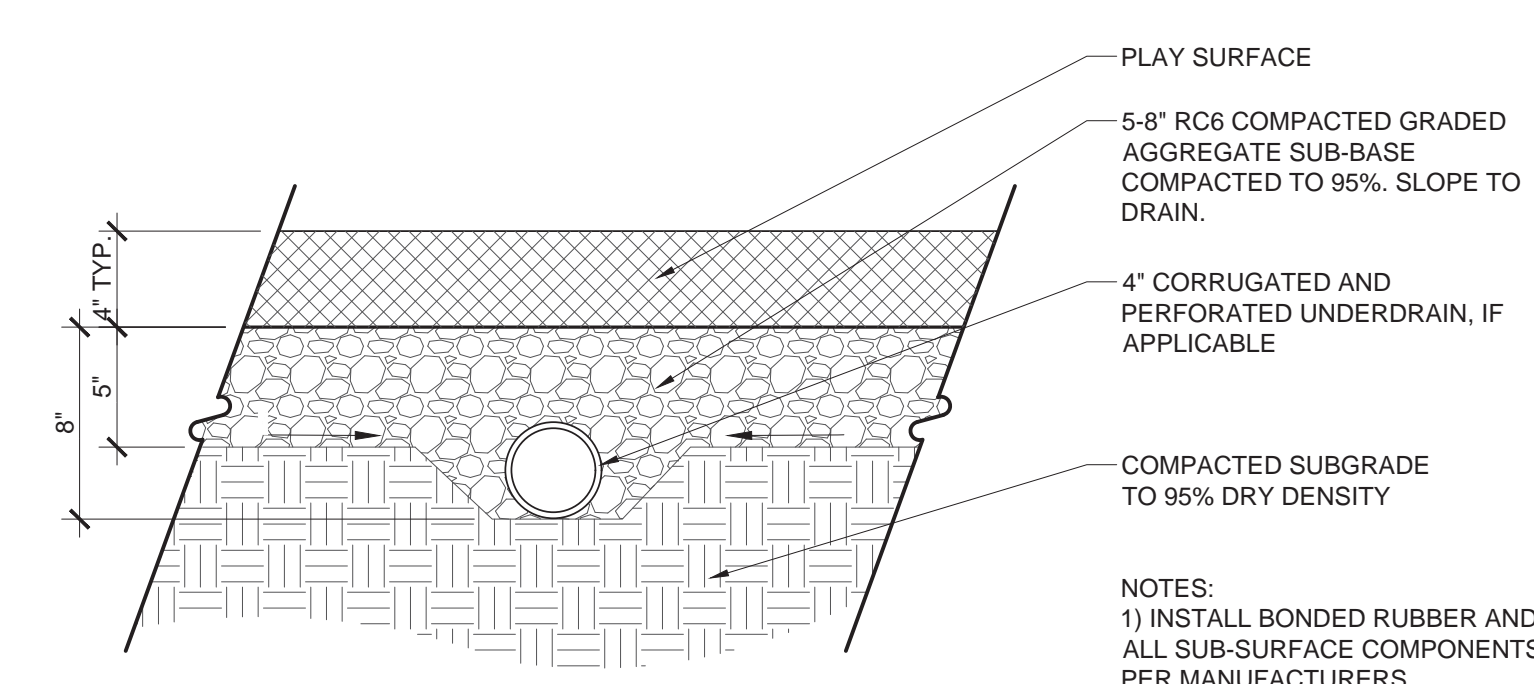
NOT RELEASED FOR CONSTRUCTION



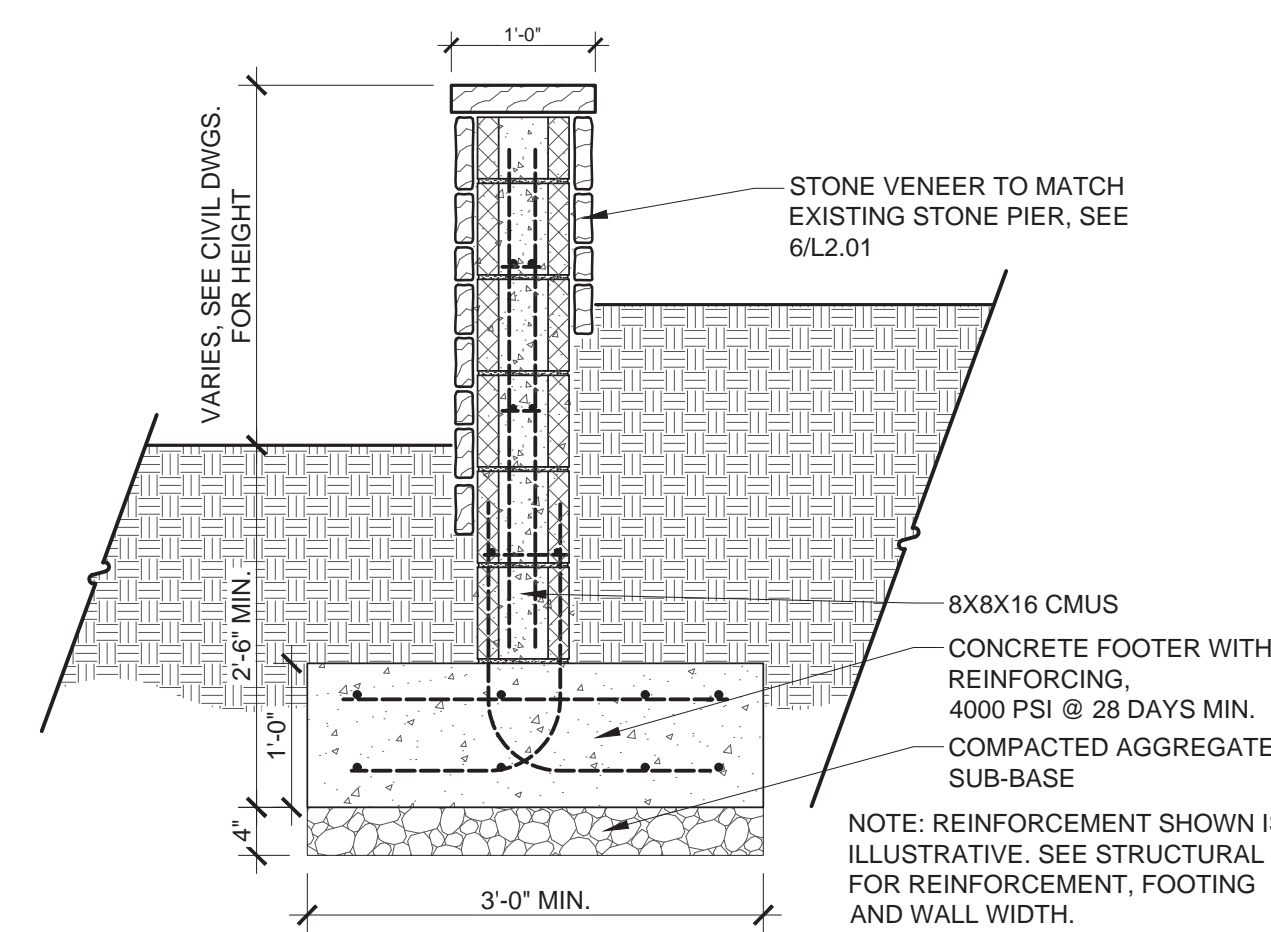
1 CONCRETE SIDEWALK
L2.01 Scale: 1/2" = 1'-0"



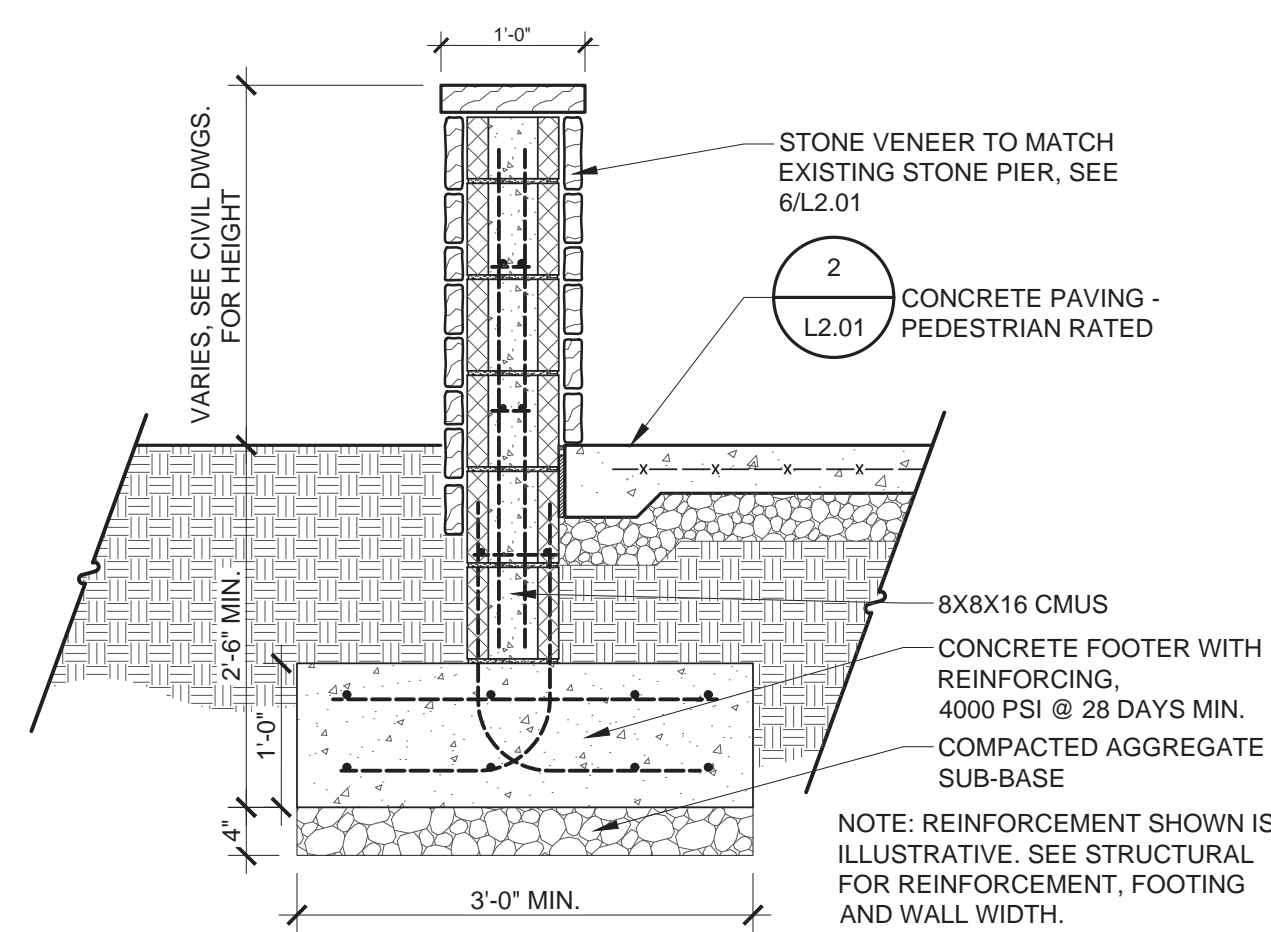
2 CONCRETE PAVING - PEDESTRIAN RATED
L2.01 Scale: 1 1/2" = 1'-0"



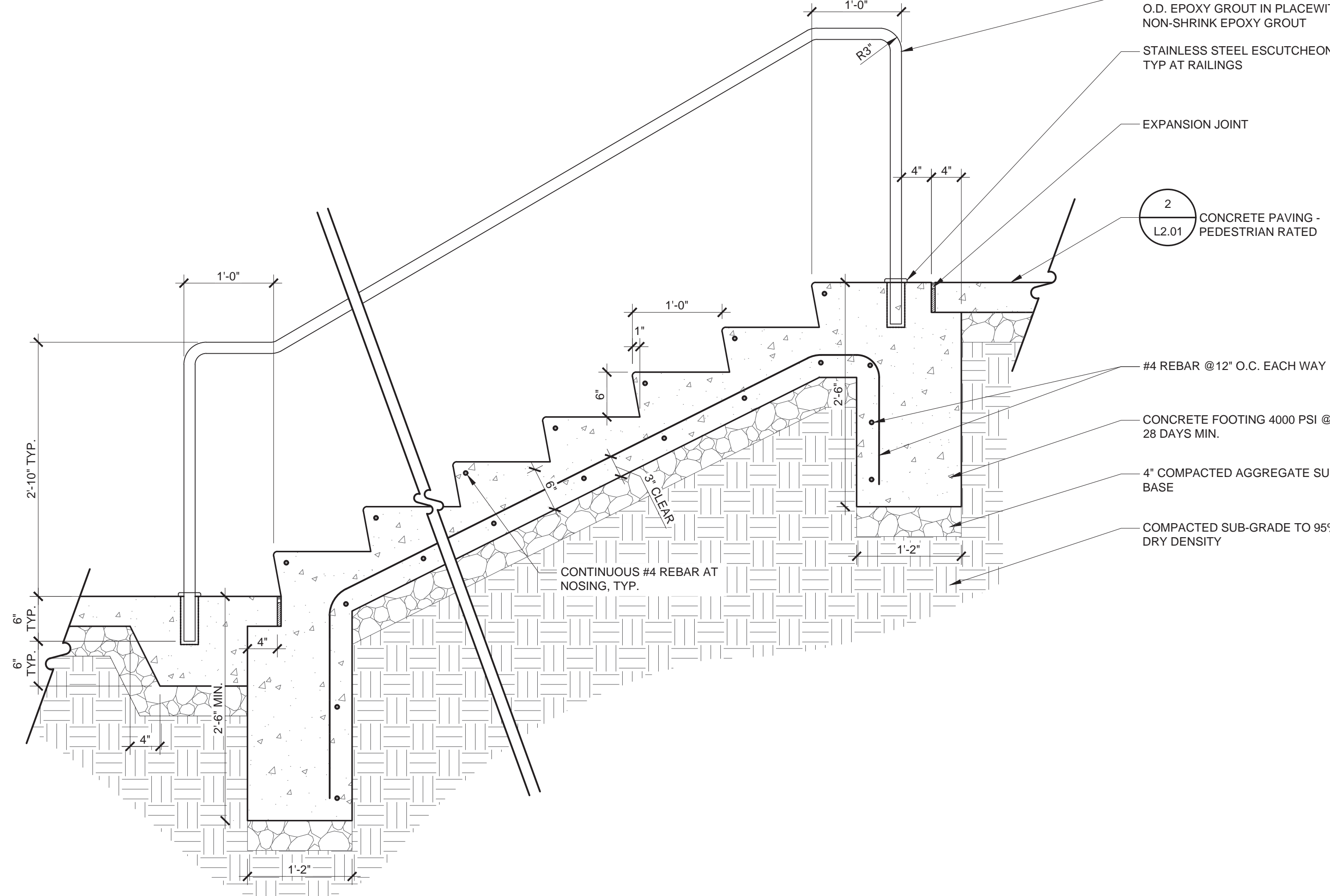
3 PLAY AREA SURFACING
L2.01 Scale: 1 1/2" = 1'-0"



4 RETAINING WALL AT PLANTING AREA
L2.01 Scale: 3/4" = 1'-0"



5 RETAINING WALL AT CONCRETE PAVING
L2.01 Scale: 3/4" = 1'-0"



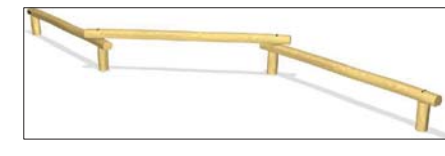
7 CONCRETE STAIRS
L2.01 Scale: 1" = 1'-0"



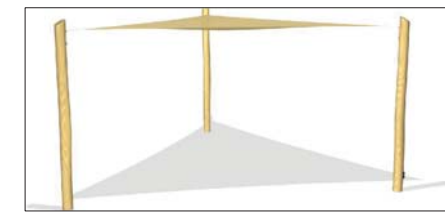
6 EXISTING STONE PIER
L2.01 Scale: NTS



MODEL: OGDEN COLLECTION
 COLOR: WOOD
 MANUFACTURER: MACLIN SITE FURNITURE
 999 18TH STREET, SUITE 3000
 DENVER, CO 80202
 (P): 800.716.5506
 CONTACT: SARAH MCKELLAR
 smckellar@maglin.com
 (P): 800.716.5506 X 265
 QUANTITY: PER PLAN
 SIZE: TBD
 NOTES: CONTRACTOR TO VERIFY QUANTITIES.
 INSTALL PER MANUFACTURERS
 RECOMMENDATION. OR APPROVED
 EQUAL.



MODEL: TRIPLE BALANCE BEAM
 QUANTITY: PER PLAN
 COMPANY: KOMPAN INC.
 821 GRAND AVENUE PARKWAY
 PFLUGERVILLE, TX 78660
 (P) 800.426.9788
 CONTACT: PAGE CASTLE
 pagcas@kompan.com
 FINISH: TBD
 COLOR: TBD
 NOTES: CONTRACTOR TO VERIFY QUANTITIES.
 INSTALL PER MANUFACTURERS
 RECOMMENDATION.



MODEL: TRIANGULAR SUNSHADE
 QUANTITY: PER PLAN
 COMPANY: KOMPAN INC.
 821 GRAND AVENUE PARKWAY
 PFLUGERVILLE, TX 78660
 (P) 800.426.9788
 CONTACT: PAGE CASTLE
 pagcas@kompan.com
 FINISH: TBD
 COLOR: TBD
 NOTES: CONTRACTOR TO VERIFY QUANTITIES.
 INSTALL PER MANUFACTURERS
 RECOMMENDATION.



MODEL: SEESAW FOR 2 PEOPLE
 QUANTITY: PER PLAN
 COMPANY: KOMPAN INC.
 821 GRAND AVENUE PARKWAY
 PFLUGERVILLE, TX 78660
 (P) 800.426.9788
 CONTACT: PAGE CASTLE
 pagcas@kompan.com
 FINISH: TBD
 COLOR: TBD
 NOTES: CONTRACTOR TO VERIFY QUANTITIES.
 INSTALL PER MANUFACTURERS
 RECOMMENDATION.



MODEL: MULE
 QUANTITY: PER PLAN
 COMPANY: KOMPAN INC.
 821 GRAND AVENUE PARKWAY
 PFLUGERVILLE, TX 78660
 (P) 800.426.9788
 CONTACT: PAGE CASTLE
 pagcas@kompan.com
 FINISH: TBD
 COLOR: TBD
 NOTES: CONTRACTOR TO VERIFY QUANTITIES.
 INSTALL PER MANUFACTURERS
 RECOMMENDATION.

1 RING BENCH
 L3.01 Scale: NTS

PROD. INFO.

2 TRIPLE BALANCE BEAM
 L3.01 Scale: NTS

PROD. INFO.

3 SUNSHADE
 L3.01 Scale: NTS

PROD. INFO.

4 SEESAW
 L3.01 Scale: NTS

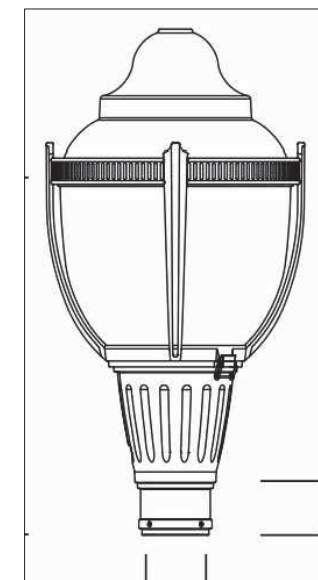
PROD. INFO.

5 SPRINGER
 L3.01 Scale: NTS

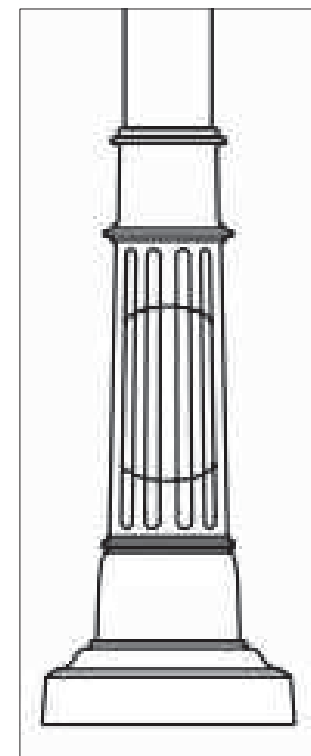
PROD. INFO.



MODEL: RBW-28 (OR APPROVED EQUAL)
 COLOR: TBD
 OPTIONS: IPE SLATS
 QUANTITY: PER PLAN
 MANUFACTURER: VICTOR STANLEY
 PO DRAWER 330
 DUNKIRK, MD 20754
 CONTACT: GEORGE BLEVINS
 (P) 800.368.2573
 (C) 301.855.8300 X 368
 www.victorstanley.com
 NOTES: CONTRACTOR TO VERIFY
 QUANTITIES.
 INSTALL PER MANUFACTURERS
 RECOMMENDATION.



MODEL: S56C1-55W48LED4K-T-GL-LE3-120-
 DMG-SFX-BSC-RTA800BA-BKTX
 (OR APPROVED EQUAL)
 COLOR: BLACK (TEXTURED)
 OPTIONS: HOUSE SIDE SHIELD (AS NECESSARY)
 QUANTITY: PER PLAN
 MANUFACTURER: PHILIPS LIGHTING NORTH AMERICA
 200 FRANKLIN SQUARE DRIVE
 SOMERSET, NJ 08873
 885-486-2216
 CONTACT: LIGHTING ENVIRONMENTS
 175 W. OSTEND STREET, SUITE A-2
 BALTIMORE, MD 21230
 WWW.LIGHTNINGENVIRONMENTS.COM
 410.712.0239
 NOTES: CONTRACTOR TO VERIFY
 QUANTITIES.
 INSTALL PER MANUFACTURERS
 RECOMMENDATION.



MODEL: RTA800-BA (OR APPROVED EQUAL)
 COLOR: BLACK (TEXTURED)
 OPTIONS: PH-7 PHOTOCCELL
 QUANTITY: PER PLAN
 MANUFACTURER: PHILIPS LIGHTING NORTH AMERICA
 200 FRANKLIN SQUARE DRIVE
 SOMERSET, NJ 08873
 885-486-2216
 CONTACT: LIGHTING ENVIRONMENTS
 175 W. OSTEND STREET, SUITE A-2
 BALTIMORE, MD 21230
 WWW.LIGHTNINGENVIRONMENTS.COM
 410.712.0239
 NOTES: CONTRACTOR TO VERIFY
 QUANTITIES.
 INSTALL PER MANUFACTURERS
 RECOMMENDATION.



MODEL: RB-36 (OR APPROVED EQUAL)
 COLOR: TBD
 OPTIONS: TBD
 QUANTITY: PER PLAN
 MANUFACTURER: VICTOR STANLEY
 PO DRAWER 330
 DUNKIRK, MD 20754
 CONTACT: GEORGE BLEVINS
 (P) 800.368.2573
 (C) 301.855.8300 X 368
 www.victorstanley.com
 NOTES: CONTRACTOR TO VERIFY
 QUANTITIES.
 INSTALL PER MANUFACTURERS
 RECOMMENDATION.



MODEL: BRBS-103 (OR APPROVED EQUAL)
 COLOR: TBD
 OPTIONS: IN-GROUND MOUNT
 QUANTITY: PER PLAN
 MANUFACTURER: VICTOR STANLEY
 PO DRAWER 330
 DUNKIRK, MD 20754
 CONTACT: GEORGE BLEVINS
 (P) 800.368.2573
 (C) 301.855.8300 X 368
 www.victorstanley.com
 NOTES: CONTRACTOR TO VERIFY
 QUANTITIES.
 INSTALL PER MANUFACTURERS
 RECOMMENDATION.

6 BENCH
 L3.01 Scale: NTS

PROD. INFO.

7 STREET LIGHT
 L3.01 Scale: NTS

PROD. INFO.

8 LIGHT POLE
 L3.01 Scale: NTS

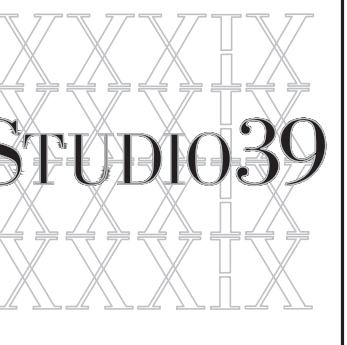
PROD. INFO.

9 TRASH RECEPTACLE
 L3.01 Scale: NTS

PROD. INFO.

10 BIKE RACK
 L3.01 Scale: NTS

PROD. INFO.



Landscape Architecture, P.C.

6416 Grosvenor Drive, Suite 100-A
 Alexandria, Virginia 22310
 Tel: 703.719.6500 Fax: 703.719.6503
 Email: frontdesk@studio39.com

ST. PAUL'S TOWNHOUSE PARCEL
 WASHINGTON, D.C.

ELM STREET DEVELOPMENT, INC.

THIS DOCUMENT AND THE IDEAS AND DESIGN INCORPORATED
 HEREIN ARE THE PROPERTY OF PROFESSIONAL SERVICE, THE
 PROPERTY OF STUDIO 39 LANDSCAPE ARCHITECTURE, P.C. AND ARE
 TO BE KEPT AND USED AS A MODEL OR AS A REFERENCE FOR ANY OTHER
 PROJECT WITHOUT THE WRITTEN AUTHORIZATION OF
 STUDIO 39 LANDSCAPE ARCHITECTURE, P.C.
 © STUDIO 39 LANDSCAPE ARCHITECTURE, P.C.

REVISIONS:

PRODUCT
 INFORMATION

DESIGN: LH
 DRAWN: PT
 CHECKED: LH
 NORTH

SCALE: Viewport Scale

PROJECT NO: 15074

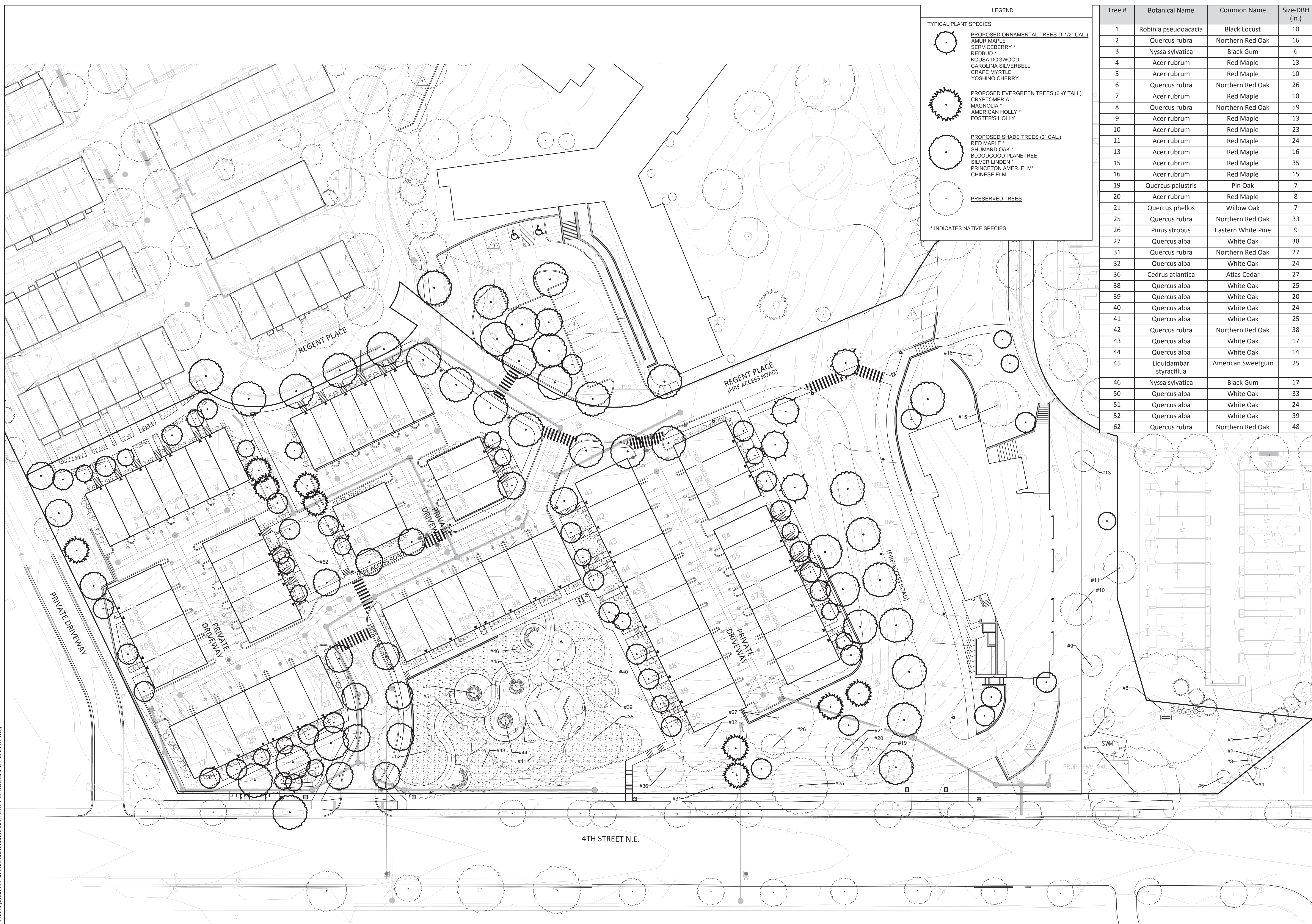
DATE: 05.23.2018

L3.01

BZA SUBMISSION

NOT RELEASED FOR CONSTRUCTION

P:\2015\15074 saint pauls6.0 cad files\l4.01 LANDSCAPE PLAN 01.dwg



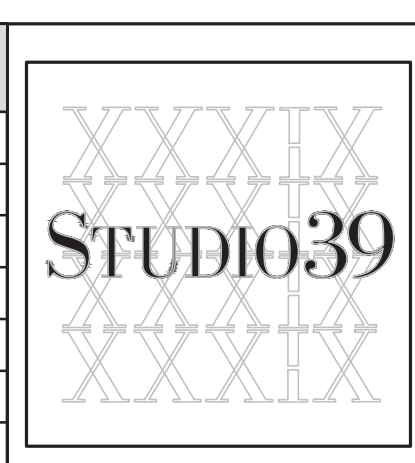
LEGEND

TYPICAL PLANT SPECIES

- PROPOSED ORNAMENTAL TREES (1 1/2" CAL.)
 - AMUR MAPLE
 - SERVICEBERRY *
 - REDBUD *
 - KOUSA DOGWOOD
 - CAROLINA SILVERBELL
 - CRAPE MYRTLE
 - YOSHINO CHERRY
- PROPOSED EVERGREEN TREES (6'-8' TALL)
 - CRYPTOMERIA
 - MAGNOLIA *
 - AMERICAN HOLLY *
 - FOSTER'S HOLLY *
- PROPOSED SHADE TREES (2" CAL.)
 - RED MAPLE *
 - SHUMARD OAK *
 - BLOODGOOD PLANETREE
 - SILVER LINDEN *
 - PRINCETON AMER. ELM *
 - CHINESE ELM
- PRESERVED TREES

* INDICATES NATIVE SPECIES

Tree #	Botanical Name	Common Name	Size-DBH (in.)
1	Robinia pseudoacacia	Black Locust	10
2	Quercus rubra	Northern Red Oak	16
3	Nyssa sylvatica	Black Gum	6
4	Acer rubrum	Red Maple	13
5	Acer rubrum	Red Maple	10
6	Quercus rubra	Northern Red Oak	26
7	Acer rubrum	Red Maple	10
8	Quercus rubra	Northern Red Oak	59
9	Acer rubrum	Red Maple	13
10	Acer rubrum	Red Maple	23
11	Acer rubrum	Red Maple	24
13	Acer rubrum	Red Maple	16
15	Acer rubrum	Red Maple	35
16	Acer rubrum	Red Maple	15
19	Quercus palustris	Pin Oak	7
20	Acer rubrum	Red Maple	8
21	Quercus phellos	Willow Oak	7
25	Quercus rubra	Northern Red Oak	33
26	Pinus strobus	Eastern White Pine	9
27	Quercus alba	White Oak	38
31	Quercus rubra	Northern Red Oak	27
32	Quercus alba	White Oak	24
36	Cedrus atlantica	Atlas Cedar	27
38	Quercus alba	White Oak	25
39	Quercus alba	White Oak	20
40	Quercus alba	White Oak	24
41	Quercus alba	White Oak	25
42	Quercus rubra	Northern Red Oak	38
43	Quercus alba	White Oak	17
44	Quercus alba	White Oak	14
45	Liquidambar styraciflua	American Sweetgum	25
46	Nyssa sylvatica	Black Gum	17
50	Quercus alba	White Oak	33
51	Quercus alba	White Oak	24
52	Quercus alba	White Oak	39
62	Quercus rubra	Northern Red Oak	48



Landscape Architecture, P.C.
 6416 Greenhills Drive, Suite 100-A
 Alexandria, Virginia 22310
 Tel: 703.719.6500 Fax: 703.719.6503
 Email: frontdesk@studio39.com

ST. PAUL'S TOWNHOUSE PARCEL
 WASHINGTON, D.C.
 ELM STREET DEVELOPMENT, INC.

THIS DOCUMENT AND THE IDEAS AND DESIGN INCORPORATED HEREIN ARE THE PROPERTY OF PROFESSIONAL SERVICE 39, INC. NO PART OF THIS DOCUMENT MAY BE REPRODUCED OR TRANSMITTED IN ANY FORM OR BY ANY MEANS, ELECTRONIC OR MECHANICAL, INCLUDING PHOTOCOPYING, RECORDING, OR BY ANY INFORMATION STORAGE AND RETRIEVAL SYSTEM, WITHOUT THE WRITTEN PERMISSION OF STUDIO 39 LANDSCAPE ARCHITECTURE, P.C.

REVISIONS:

LANDSCAPE PLAN 01

DESIGN: LH
 DRAWN: PT
 CHECKED: LH

SCALE: 1" = 30'-0"

PROJECT NO: 15074

DATE: 05.23.2018

L4.01

BZA SUBMISSION

1 SITE PLAN
 Scale: 1" = 30'-0"
 L1.01

PLAN

NOT RELEASED FOR CONSTRUCTION

REVISIONS:

BIO-RETENTION ENLARGEMENT

DESIGN: LH
DRAWN: PT
CHECKED: LH

SCALE: Viewport Scale

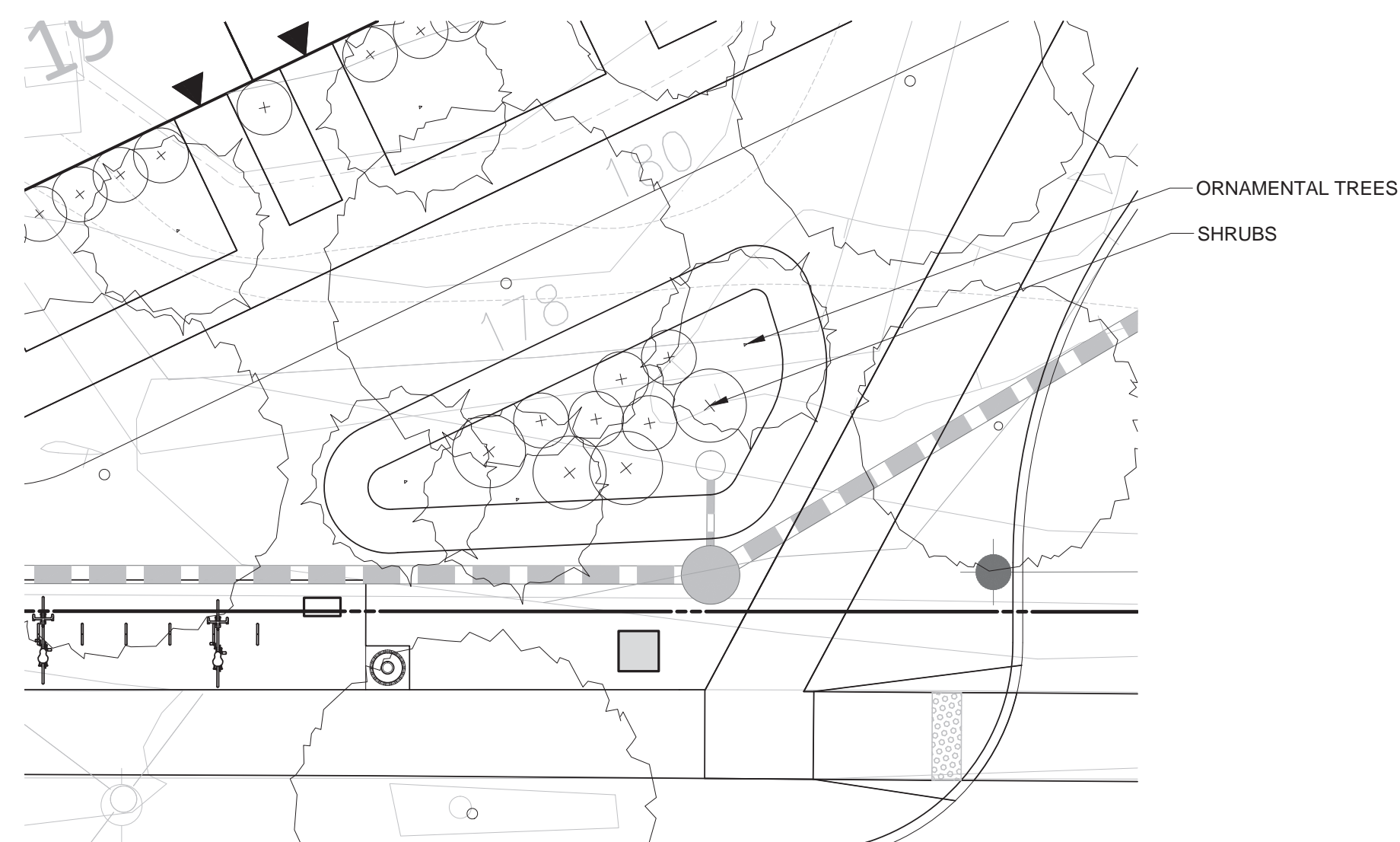
PROJECT NO: 15074

DATE: 05.23.2018

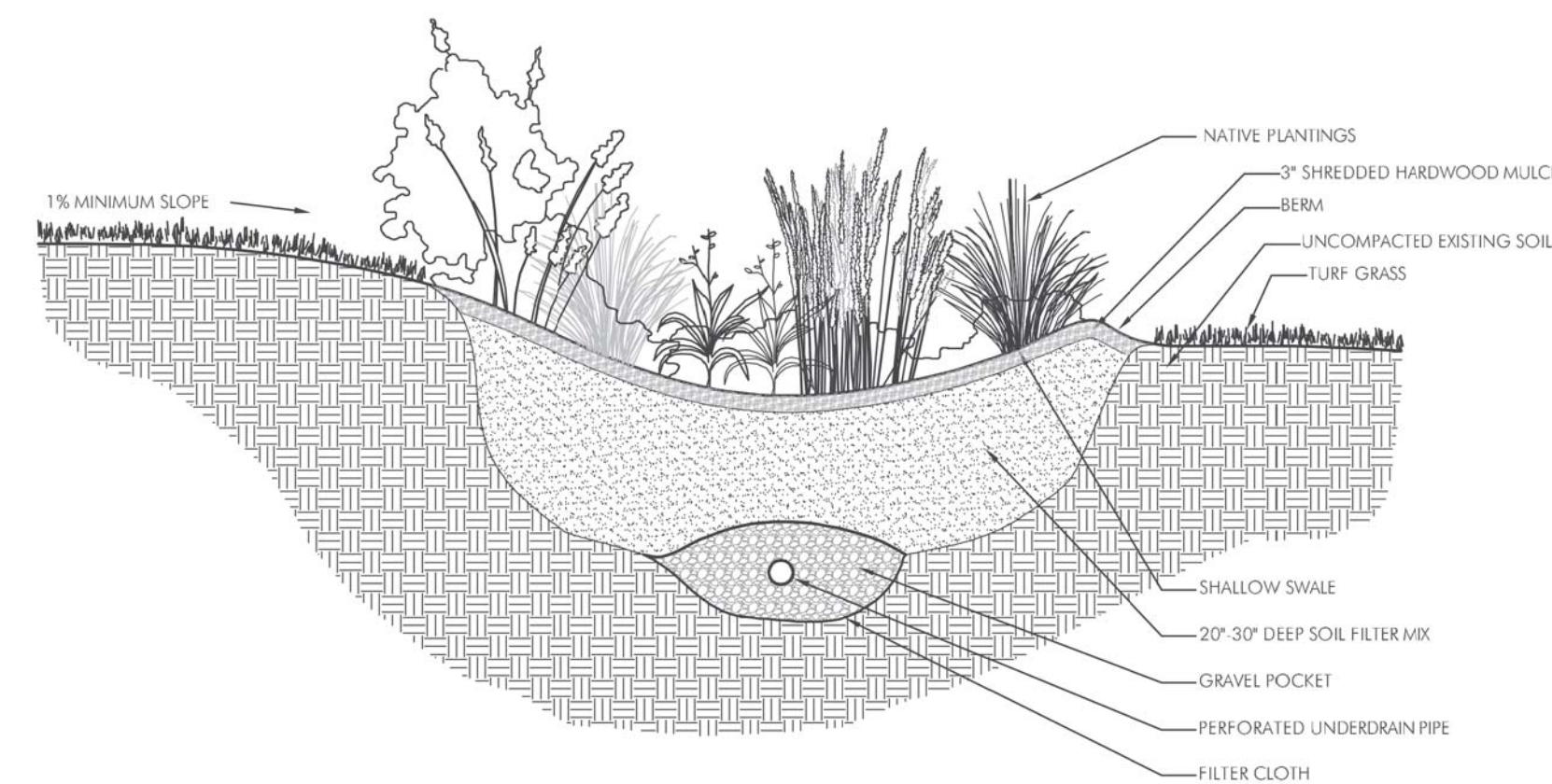
L4.02

BZA SUBMISSION

NOT RELEASED FOR CONSTRUCTION



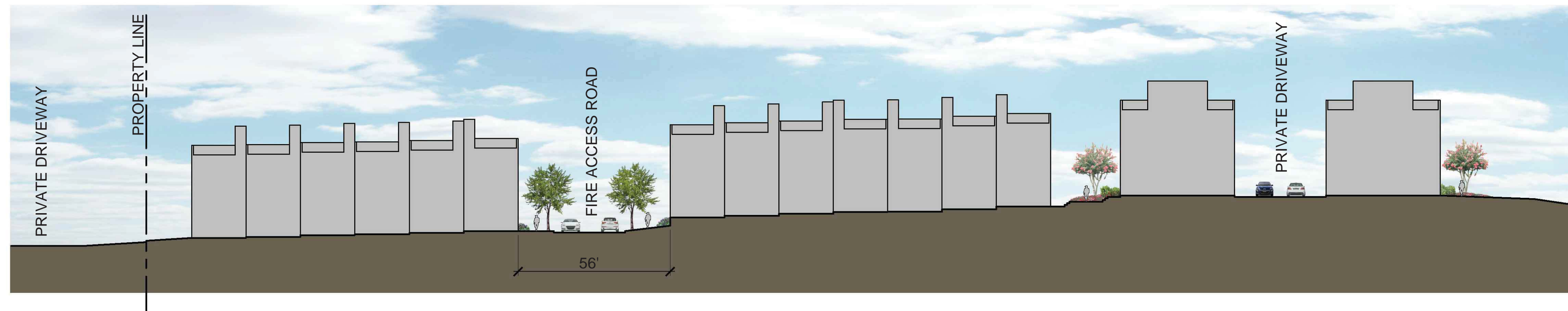
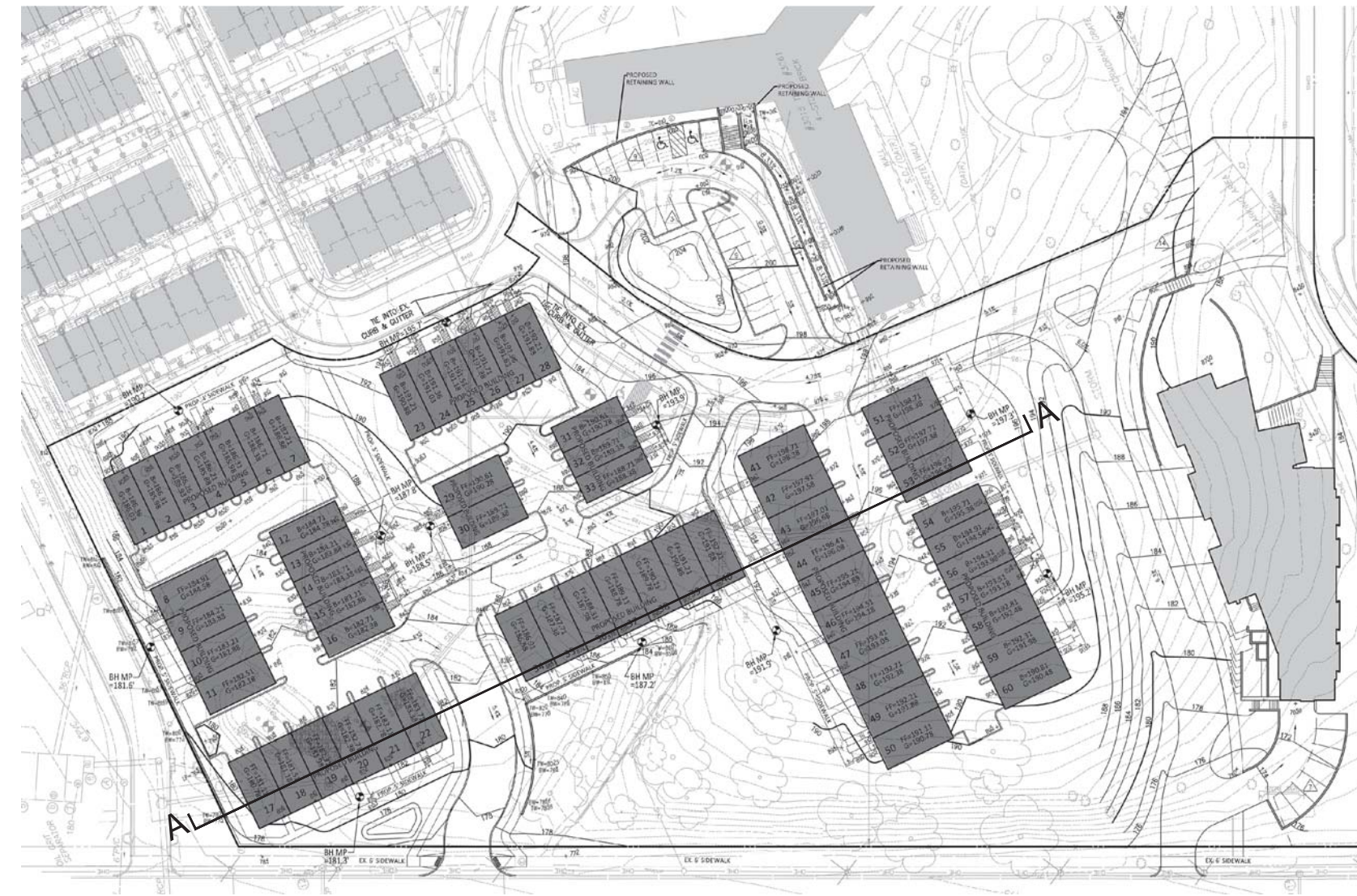
1 BIO-RETENTION ENLARGEMENT PLAN
L4.02 Scale: 1:10



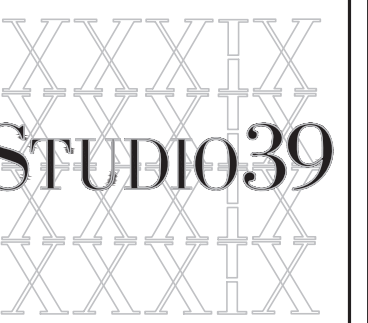
2 BIO-RETENTION DETAIL SECTION
L4.02 Scale: 3/8" = 1'-0"

BIO-RETENTION/RAIN GARDEN
TYPICAL PLANT SPECIES

- | | |
|---|---|
| EVERGREEN
AMERICAN HOLLY
AMERICAN ARBORVITAE
EASTERN RED CEDAR | PERENNIALS
NEW ENGLAND ASTER
MARSH MARIGOLD
JOE PYE WEED
SWAMP SUNFLOWER
SENSITIVE FERN
CINNAMON FERN
ROYAL FERN
SWITCH GRASS
CONEFLOWER
WRINKLE LEAF GOLDENROD
WILLOWLEAF BLUESTAR
COLUMBINE
SWAMP MILKWEED
ASTILBE
RIVER OATS
DAYLILY
MALTESE-CROSS
VIRGINIA BLUE BELLS |
| ORNAMENTAL TREES
FRINGE TREE
SERVICE BERRY
SWEETBAY MAGNOLIA
BLACK GUM | |
| SHRUBS
RED CHOKEBERRY
BLACK CHOKEBERRY
BUTTON BUSH
REDTIG DOGWOOD
WITCH HAZEL
ST JOHN'S WORT
INKBERRY
WINTERBERRY
VIRGINIA SWEET SPIRE
SPICE BUSH
WAX MYRTLE
BAYBERRY
SWEET AZALEA
SWAMP AZALEA | |



SECTION A-A
1/64" = 1'-0"



Landscape Architecture, P.C.

6416 Greenbelt Drive, Suite 100-A
Alexandria, Virginia 22310
Tel: 703.719.6500 Fax: 703.719.6503
Email: frontdesk@studio39.com

ST. PAUL'S TOWNHOUSE PARCEL
WASHINGTON, D.C.

ELM STREET DEVELOPMENT, INC.

THIS DOCUMENT AND THE IDEAS AND DESIGN INCORPORATED HEREIN ARE THE PROPERTY OF PROFESSIONAL SERVICE, STUDIO 39, A DIVISION OF STUDIO 39 LANDSCAPE ARCHITECTURE, P.C. AND ARE TO BE KEPT IN CONFIDENCE AND NOT REPRODUCED OR USED FOR ANY OTHER PROJECT WITHOUT THE WRITTEN AUTHORIZATION OF STUDIO 39 LANDSCAPE ARCHITECTURE, P.C.
© STUDIO 39 LANDSCAPE ARCHITECTURE, P.C.

REVISIONS:

STREETSCAPE
SECTIONS - 01

DESIGN: LH
DRAWN: PT
CHECKED: LH

SCALE: Viewport Scale

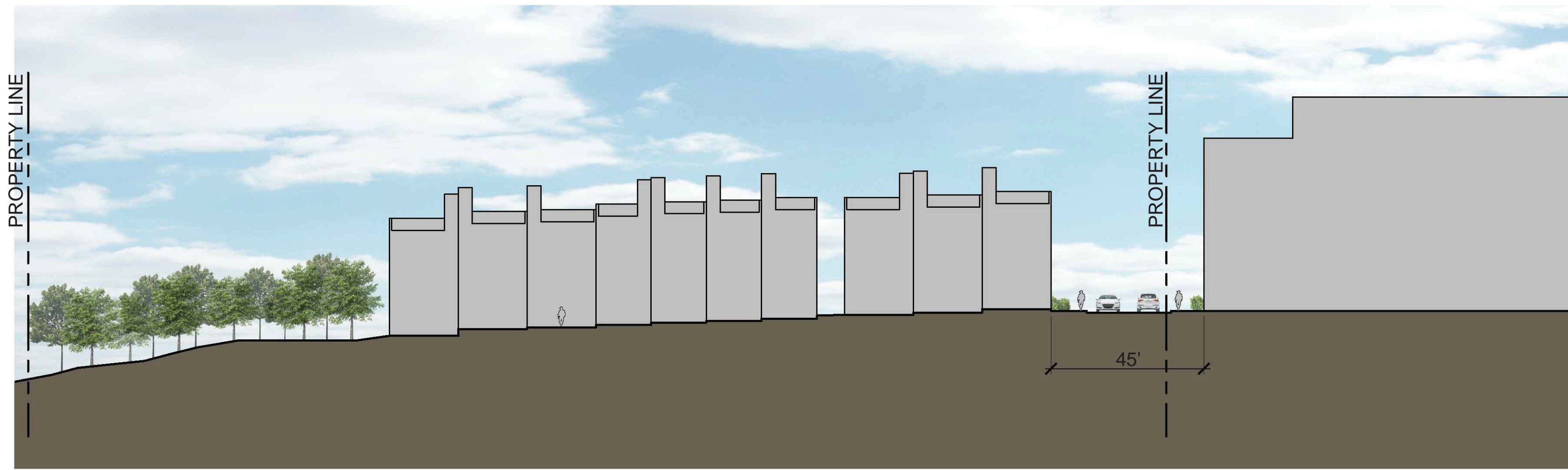
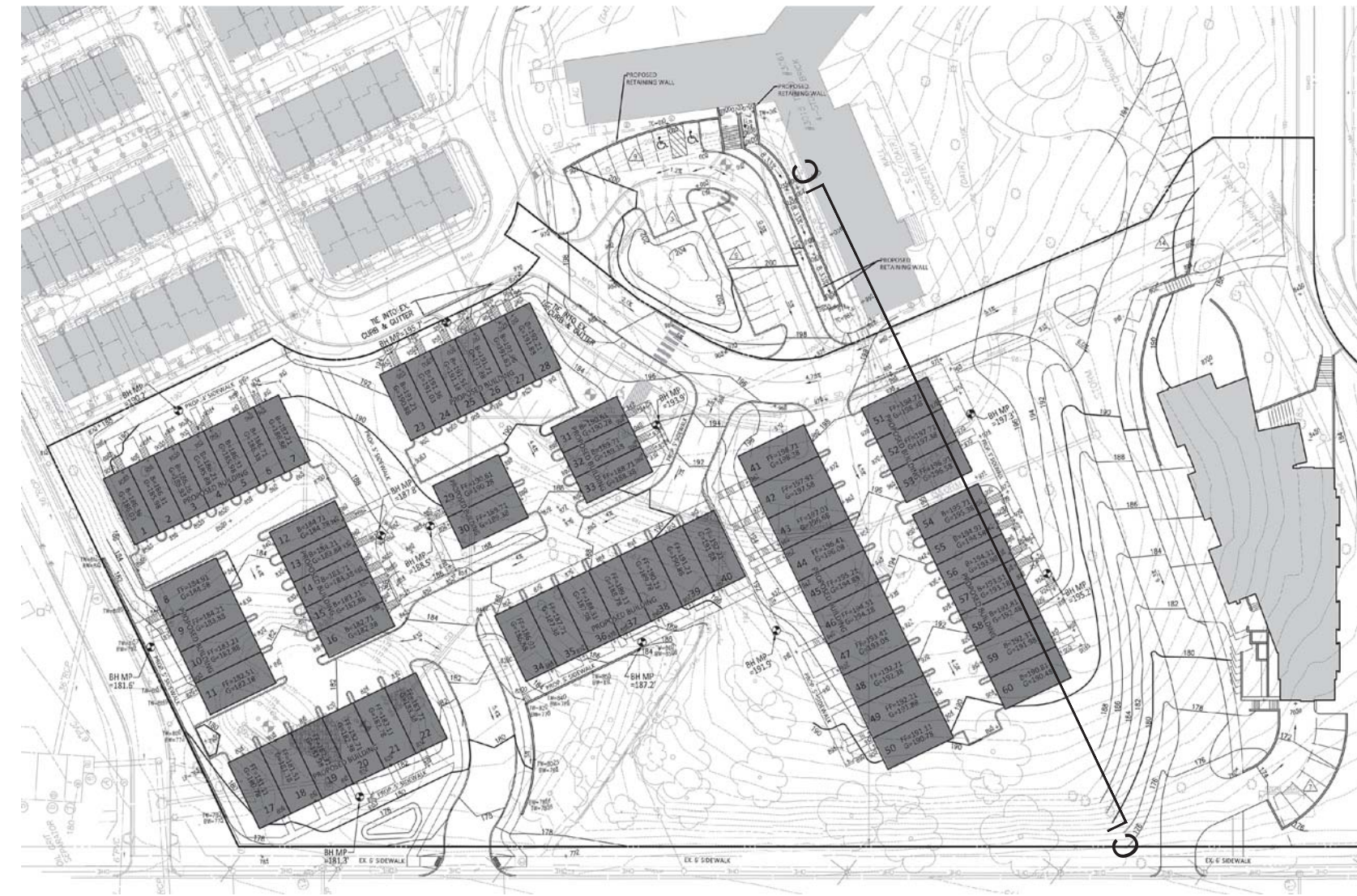


PROJECT NO: 15074

DATE: 05.23.2018

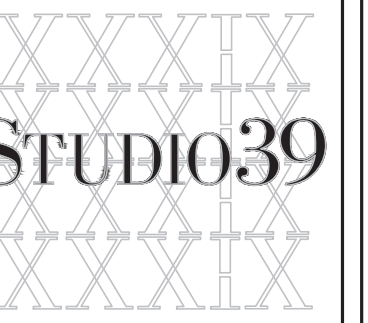
L6.01

BZA SUBMISSION



SECTION C-C
1/64" = 1'-0"

p:\2018\15074 saint pauls\6.0 cad files\6.0 submission\L7.03 STREETSCAPE SECTIONS - 03.dwg



Landscape Architecture, P.C.

6416 Grandville Drive, Suite 100-A
Alexandria, Virginia 22310
Tel: 703.719.6500 Fax: 703.719.6503
Email: frontdesk@studio39.com

ST. PAUL'S TOWNHOUSE PARCEL

WASHINGTON, D.C.

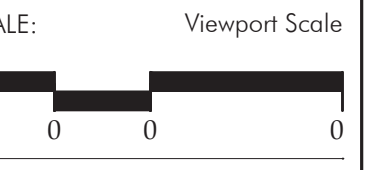
ELM STREET DEVELOPMENT, INC.

THIS DOCUMENT AND THE IDEAS AND DESIGN INCORPORATED HEREIN ARE THE PROPERTY OF PROFESSIONAL SERVICE, STUDIO 39, A DIVISION OF STUDIO 39 LANDSCAPE ARCHITECTURE, P.C. NO PART OF THIS DOCUMENT IS TO BE COPIED, REPRODUCED, OR TRANSMITTED IN ANY FORM OR BY ANY MEANS, ELECTRONIC OR MECHANICAL, INCLUDING PHOTOCOPYING, RECORDING, OR BY ANY INFORMATION STORAGE AND RETRIEVAL SYSTEM, WITHOUT THE WRITTEN PERMISSION OF STUDIO 39 LANDSCAPE ARCHITECTURE, P.C.
© STUDIO 39 LANDSCAPE ARCHITECTURE, P.C.

REVISIONS:

STREETSCAPE SECTIONS - 03

DESIGN:	LH
DRAWN:	PT
CHECKED:	LH



PROJECT NO: 15074
DATE: 05.23.2018

L6.03

BZA SUBMISSION

NOT RELEASED FOR CONSTRUCTION