

# TAB D

# 1612-1616 7TH ST. N.W.

## LIST OF DRAWINGS:

- A-00 COVER SHEET / RENDERED VIEW
- A-01 AERIAL VIEW
- A-02 CONTEXT PHOTOS
- A-03 CONTEXT PHOTOS
- A-04 EXTERIOR DETAIL PHOTOS
- A-05 EXISTING FIRST FLOOR PLAN
- A-06 EXISTING SECOND FLOOR PLAN
- A-07 EXISTING EAST ELEVATION
- A-08 PROPOSED BASEMENT FLOOR PLAN
- A-09 PROPOSED FIRST FLOOR PLAN
- A-10 PROPOSED SECOND FLOOR PLAN
- A-11 PROPOSED THIRD FLOOR PLAN
- A-12 PROPOSED PENTHOUSE FLOOR PLAN
- A-13 PROPOSED ROOF FLOOR PLAN
- A-14 EAST STREETScape
- A-15 PROPOSED EAST ELEVATION
- A-16 PROPOSED WEST ELEVATION
- A-17 PROPOSED NORTH ELEVATION
- A-18 PROPOSED SOUTH ELEVATION
- A-19 PROPOSED PERSPECTIVE
- A-20 PROPOSED PERSPECTIVE
- A-21 PROPOSED PERSPECTIVE
- A-22 PROPOSED SECTION



## 1612-1616 7TH ST. N.W.

1612-1614 7th St. N.W.  
Washington D.C.  
Square: 420 Lot No: 38 Zone: C-2-A



PGN Architects, PLLC  
210 7th Street SE - Suite 201  
Washington, DC 20003  
(P) 202-822-5995 (F) 202-822-0908

COVER SHEET | A-00

03/02/2016





# 1612-1616 7TH ST. N.W.

1612-1614 7th St. N.W.  
Washington D.C.  
Square: 420 Lot No: 38 Zone: C-2-A

AERIAL VIEW | A-01

03/02/2016



PGN Architects, PLLC  
210 7th Street SE - Suite 201  
Washington, DC 20003  
(P) 202-822-5995 (F) 202-822-0908





1



2



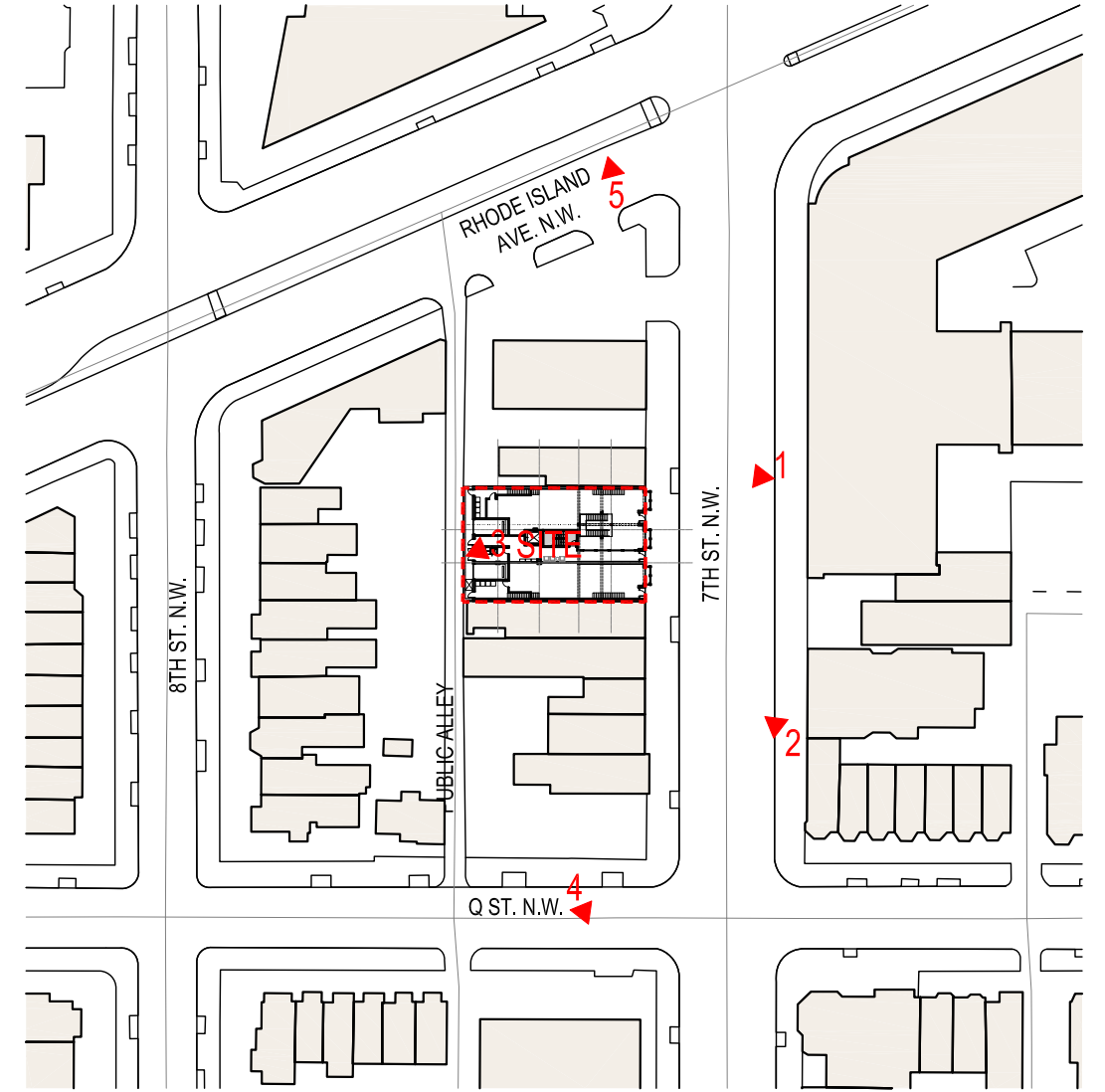
3



4



5



1 KEYPLAN  
SCALE: 1:100

# 1612-1616 7TH ST. N.W.

1612-1614 7th St. N.W.  
Washington D.C.  
Square: 420 Lot No: 38 Zone: C-2-A



PGN Architects, PLLC  
210 7th Street SE - Suite 201  
Washington, DC 20003  
(P) 202-822-5995 (F) 202-822-0908

w:\15-0031\_1612-1614 7th st. nw\drawings\sheets\15-0031\_a-02 context.dwg

COPYRIGHT © 2015 PGN ARCHITECTS, PLLC





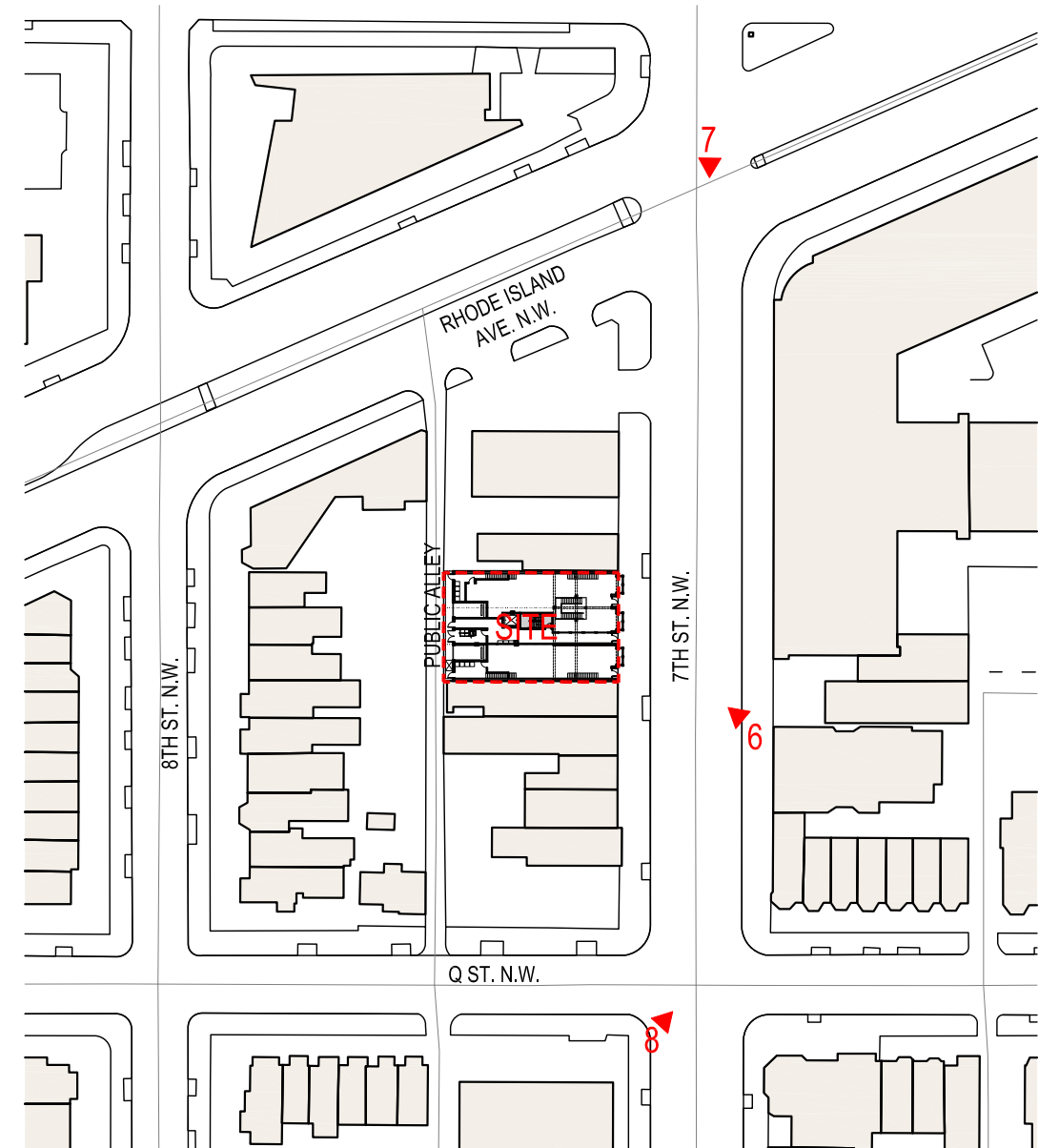
6



7



8



1 KEYPLAN  
SCALE: 1:100

# 1612-1616 7TH ST. N.W.

1612-1614 7th St. N.W.  
Washington D.C.  
Square: 420 Lot No: 38 Zone: C-2-A



PGN Architects, PLLC  
210 7th Street SE - Suite 201  
Washington, DC 20003  
(P) 202-822-5995 (F) 202-822-0908

w:\15-0031\_1612-1614 7th st. nw\drawings\sheets\15-0031\_a-03 context.dwg





HISTORIC FACADE



CORNICE DETAIL



CORNICE DETAIL



WINDOW DETAIL



WINDOW HEAD DETAIL



BUILDING @ PROPERTY LINE



WINDOW HEAD DETAIL



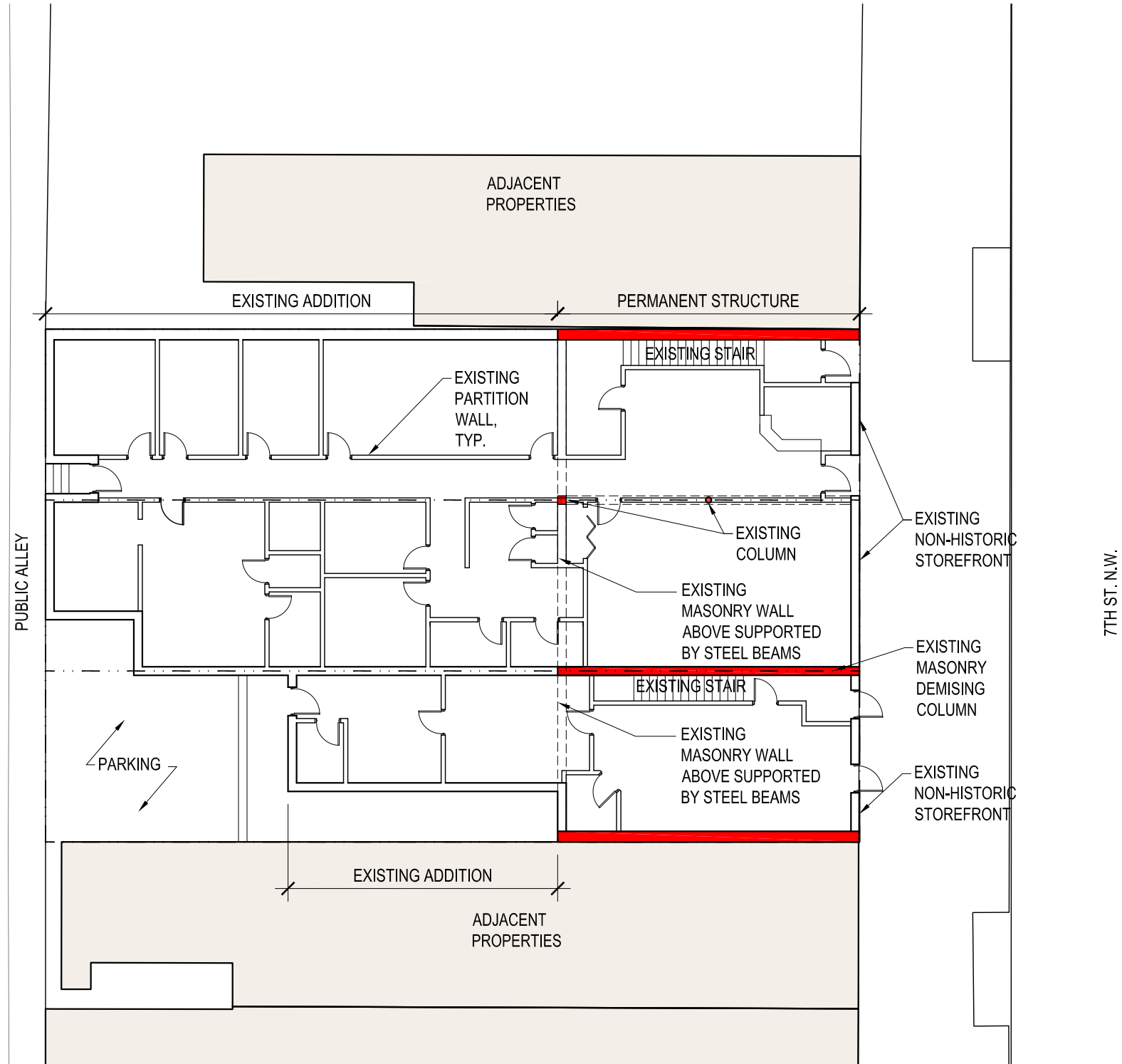
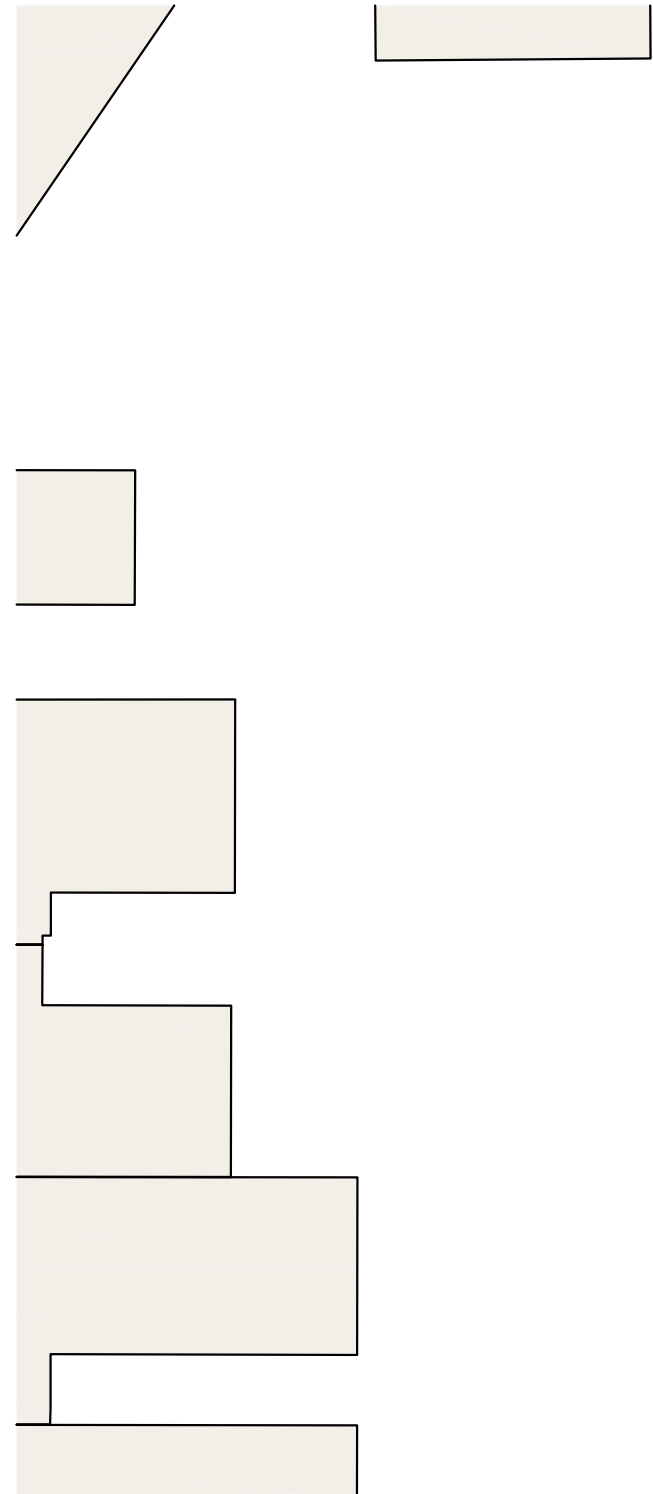
BUILDING @ PROPERTY LINE

1612-1616 7TH ST. N.W.

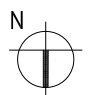
1612-1614 7th St. N.W.  
 Washington D.C.  
 Square: 420 Lot No: 38 Zone: C-2-A

**PGN** ARCHITECTS  
 PGN Architects, PLLC  
 210 7th Street SE - Suite 201  
 Washington, DC 20003  
 (P) 202-822-5995 (F) 202-822-0908

w:\15-0031\_1612-1614\_7th\_st\_nw\drawings\sheet\15-0031\_a-05 existing first floor plan.dwg



1 EXISTING FIRST FLOOR PLAN  
SCALE: 1/16" = 1'



# 1612-1614 7TH ST. N.W.

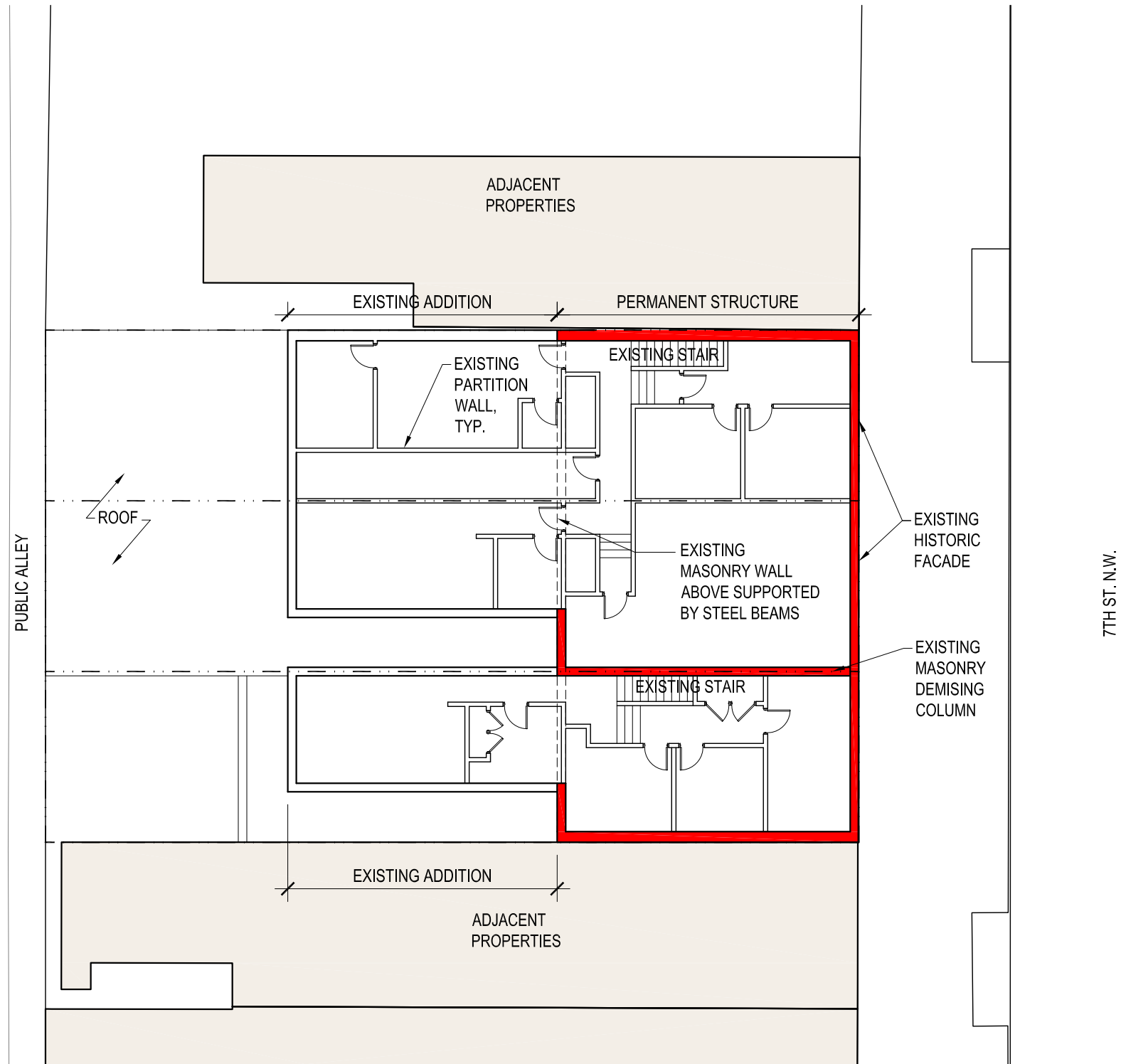
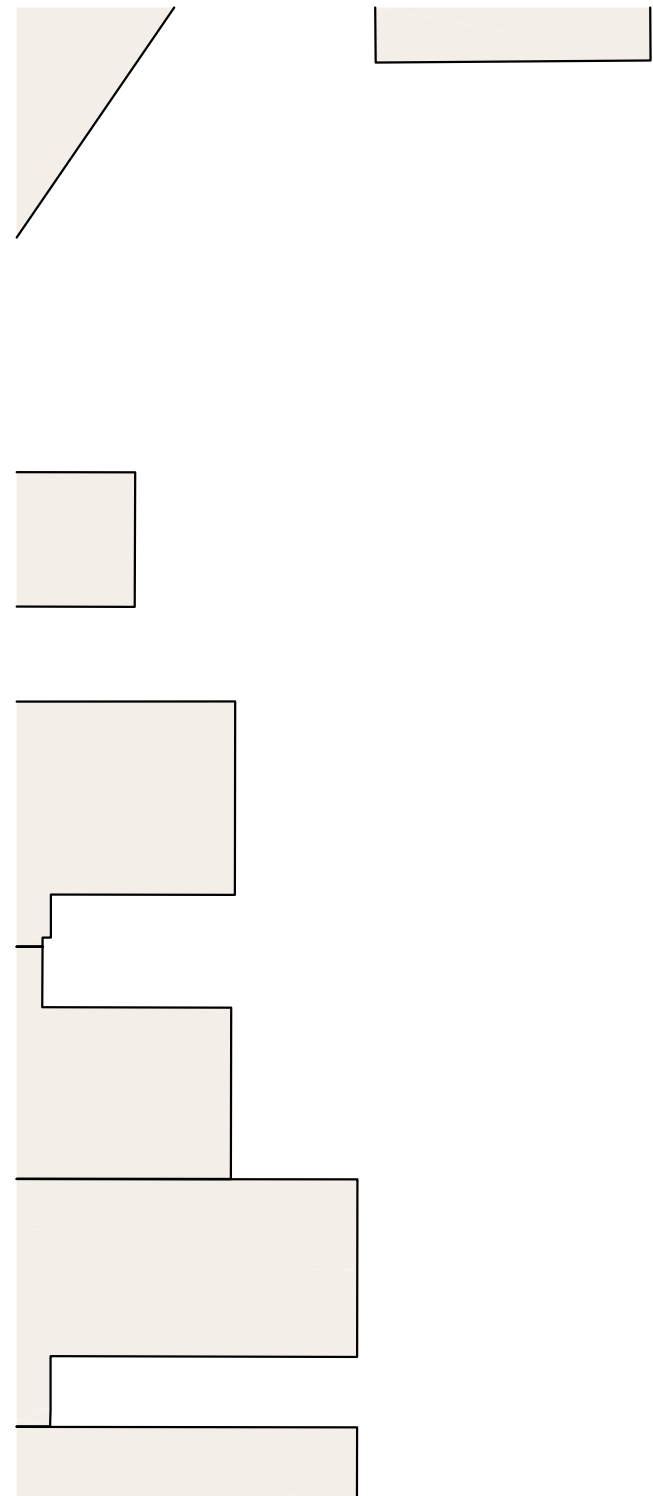
1612-1614 7th St. N.W.  
Washington D.C.  
Square: 420 Lot No: 38 Zone: C-2-A



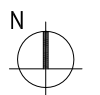
PGN Architects, PLLC  
210 7th Street SE - Suite 201  
Washington, DC 20003  
(P) 202-822-5995 (F) 202-822-0908



w:\15-0031\_1612-1614\_7th\_st\_nw\drawings\sheet\15-0031\_a-06 existing second floor plan.dwg



1 EXISTING SECOND FLOOR PLAN  
SCALE: 1/16" = 1'



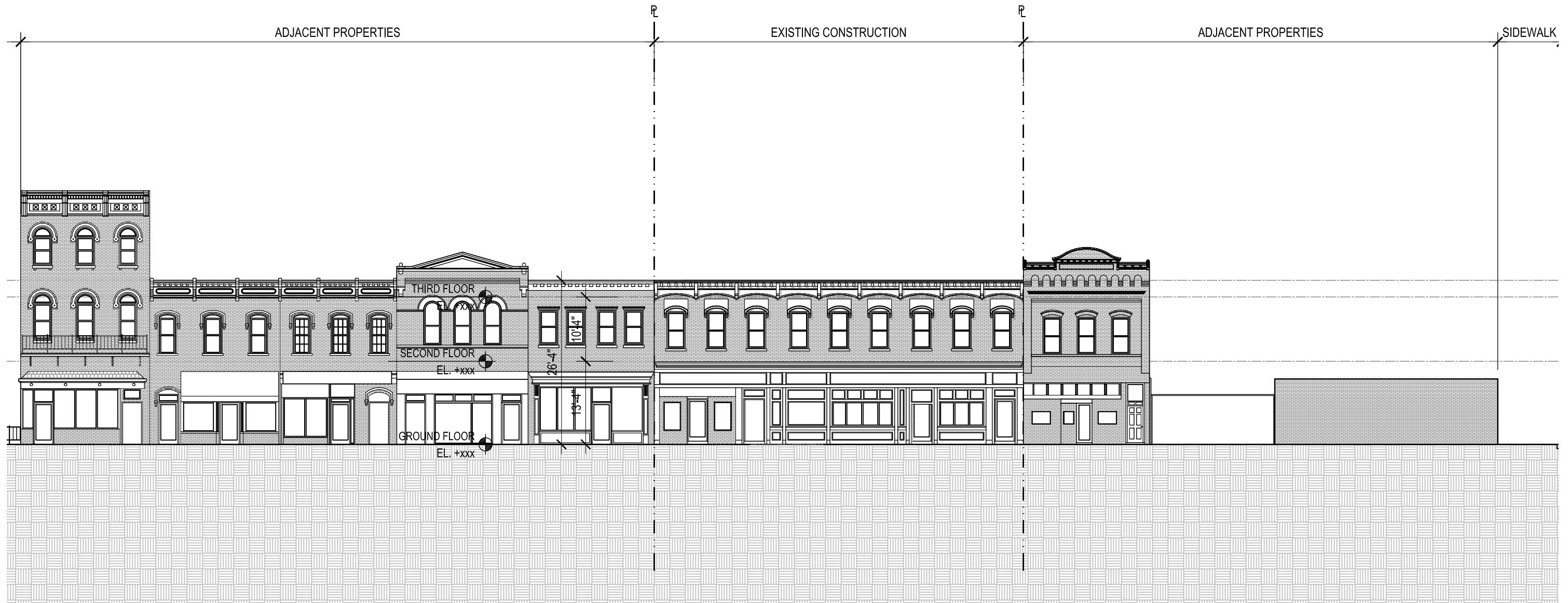
# 1612-1614 7TH ST. N.W.

1612-1614 7th St. N.W.  
Washington D.C.  
Square: 420 Lot No: 38 Zone: C-2-A

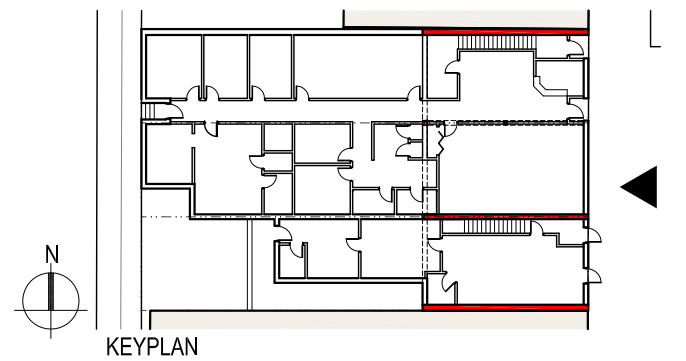


PGN Architects, PLLC  
210 7th Street SE - Suite 201  
Washington, DC 20003  
(P) 202-822-5995 (F) 202-822-0908





1 EXISTING EAST ELEVATION  
SCALE: 1/16" = 1'



1612-1616 7TH ST. N.W.

1612-1614 7th St. N.W.  
Washington D.C.  
Square: 420 Lot No: 38 Zone: C-2-A

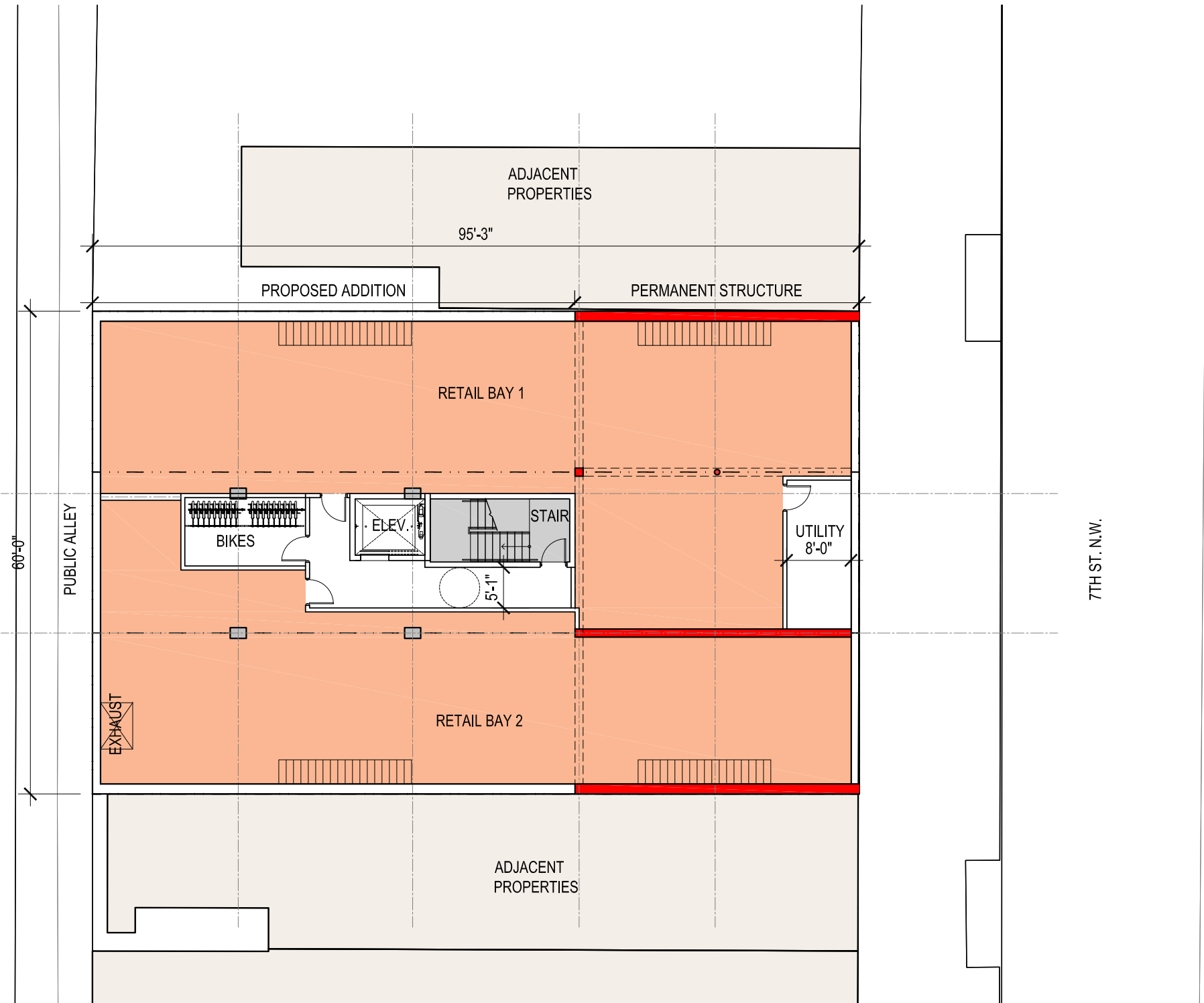
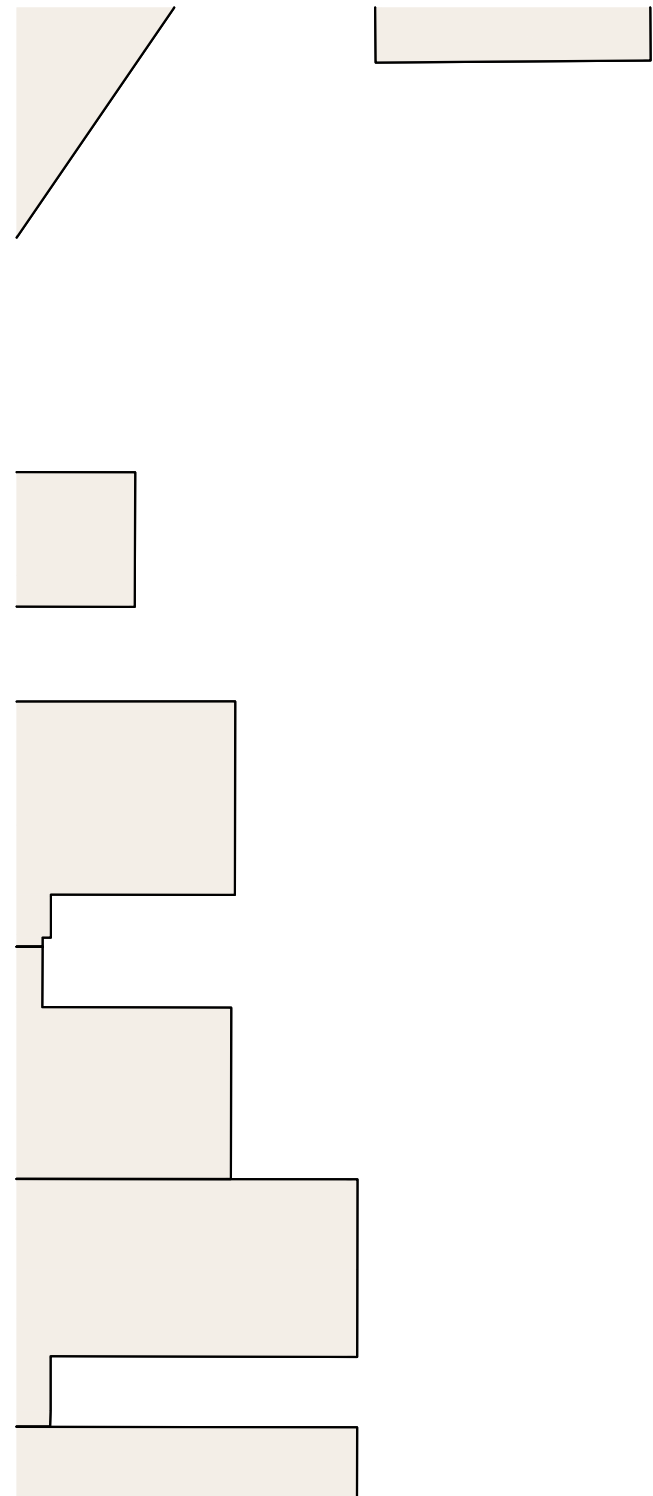


PGN Architects, PLLC  
210 7th Street SE - Suite 201  
Washington, DC 20003  
(P) 202-822-5995 (F) 202-822-0908

w:\15-0031\_1612-1614\_7th\_st\_nw\drawings\sheets\brn sheets\15-0031\_a-07 existing east elevation.dwg



w:\15-0031\_1612-1614\_7th\_st\_nw\drawings\sheet\basement\15-0031\_a-08\_proposed basement  
fp.dwg



1 PROPOSED BASEMENT FLOOR PLAN  
SCALE: 1/16" = 1'



1612-1614 7TH ST. N.W.

1612-1614 7th St. N.W.  
Washington D.C.  
Square: 420 Lot No: 38 Zone: C-2-A



PGN Architects, PLLC  
210 7th Street SE - Suite 201  
Washington, DC 20003  
(P) 202-822-5995 (F) 202-822-0908

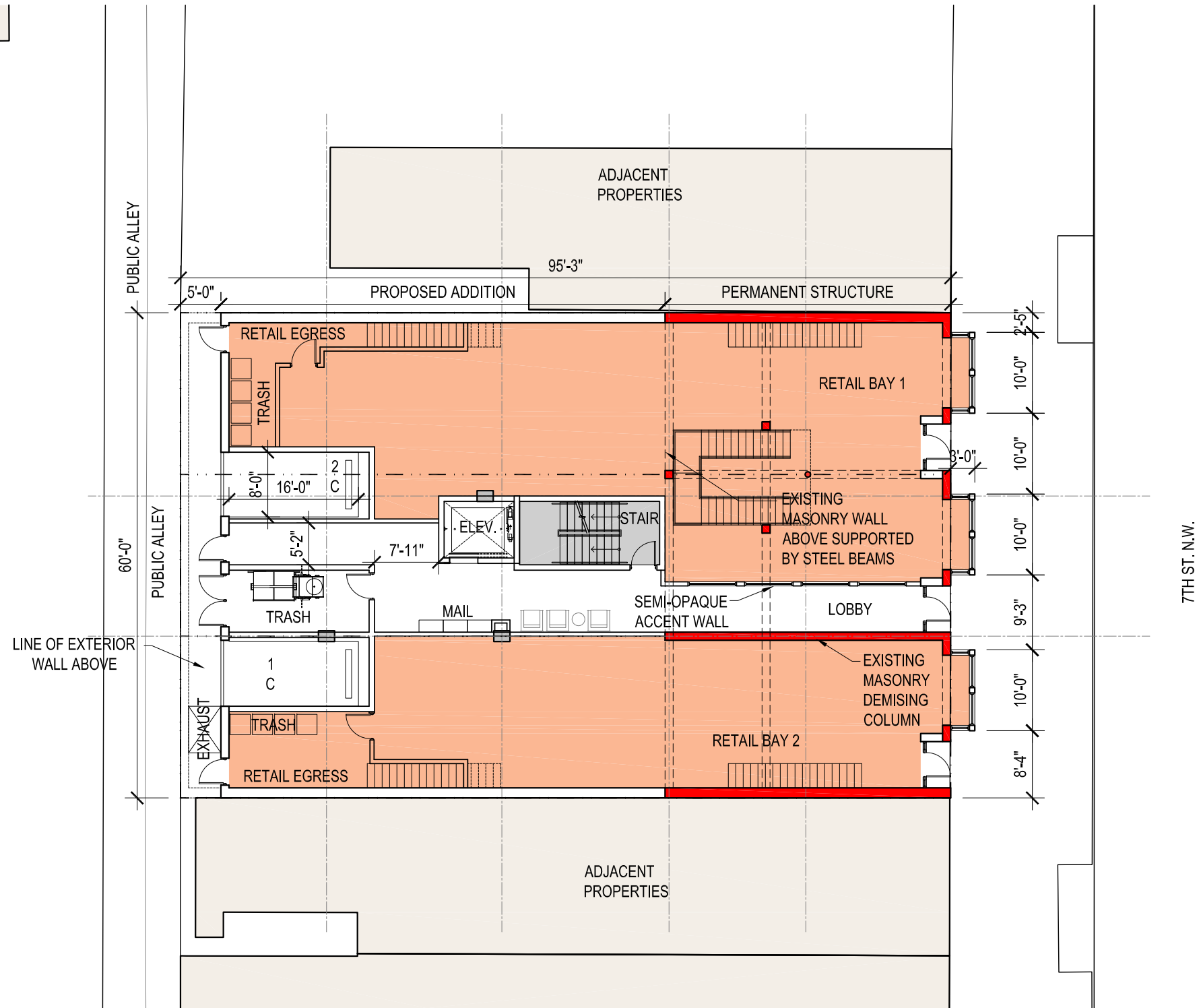
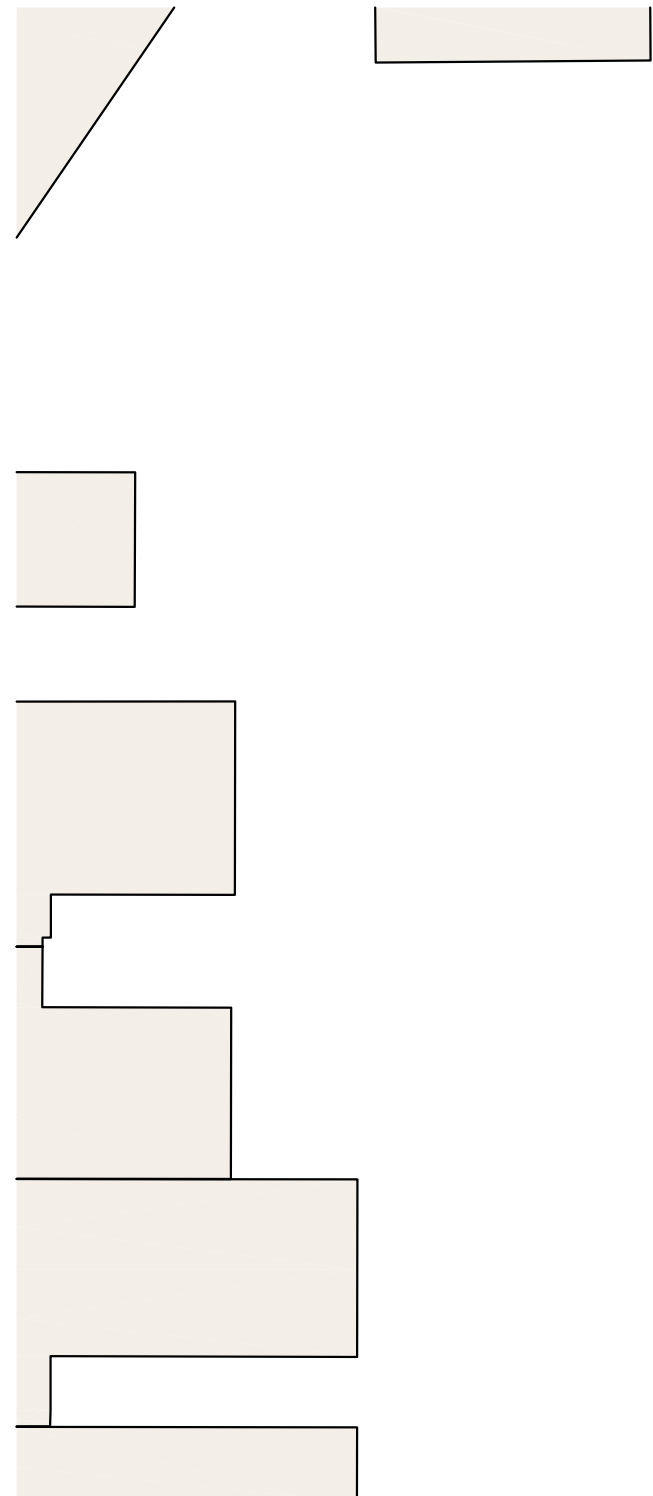
PROPOSED BASEMENT FLOOR PLAN

A-08

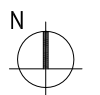
03/02/2016



w:\15-0031\_1612-1614\_7th st. n.w.\drawings\sheets\proposed\15-0031\_a-09\_proposed first floor.dwg



1 PROPOSED FIRST FLOOR PLAN  
SCALE: 1/16" = 1'



# 1612-1616 7TH ST. N.W.

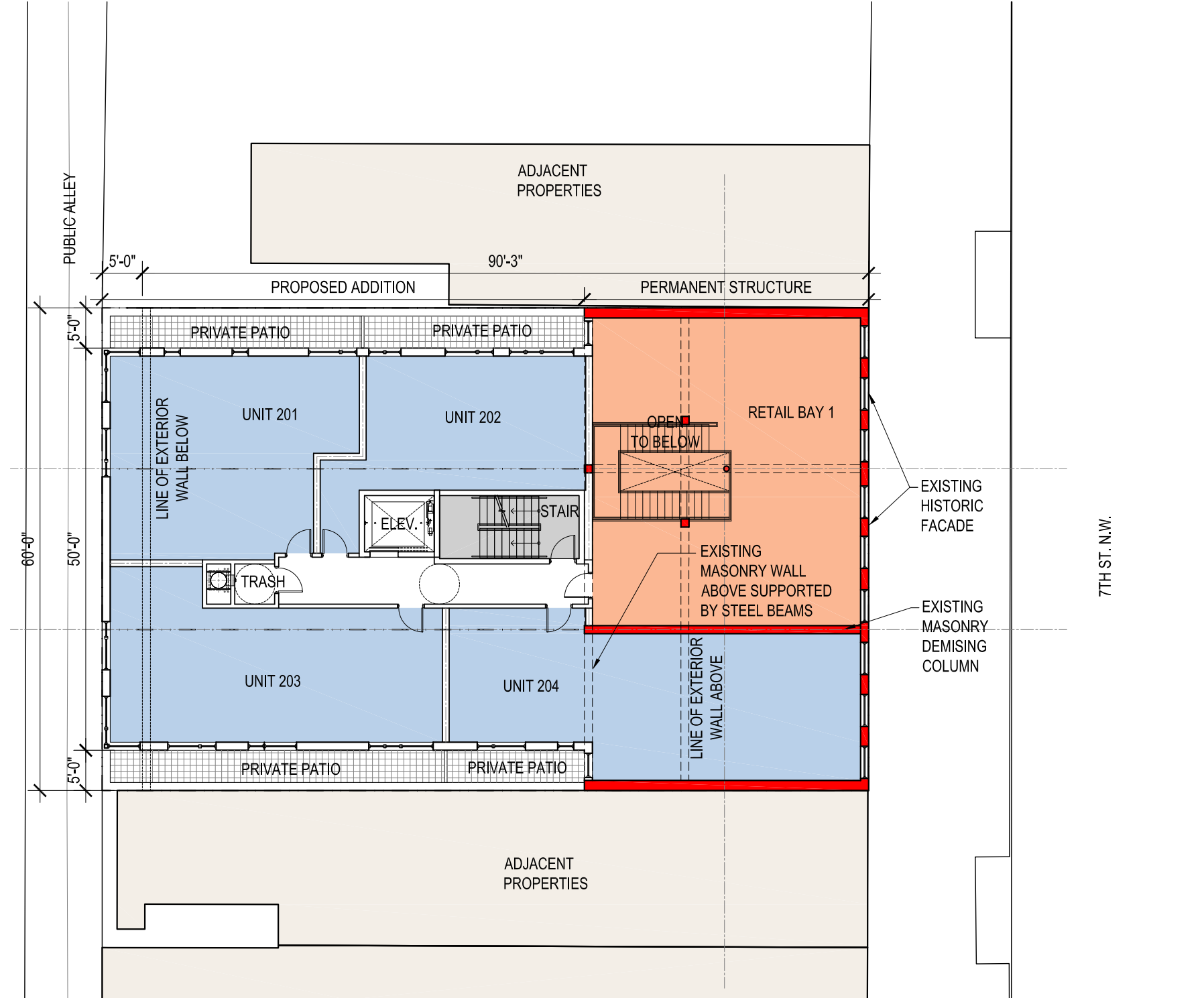
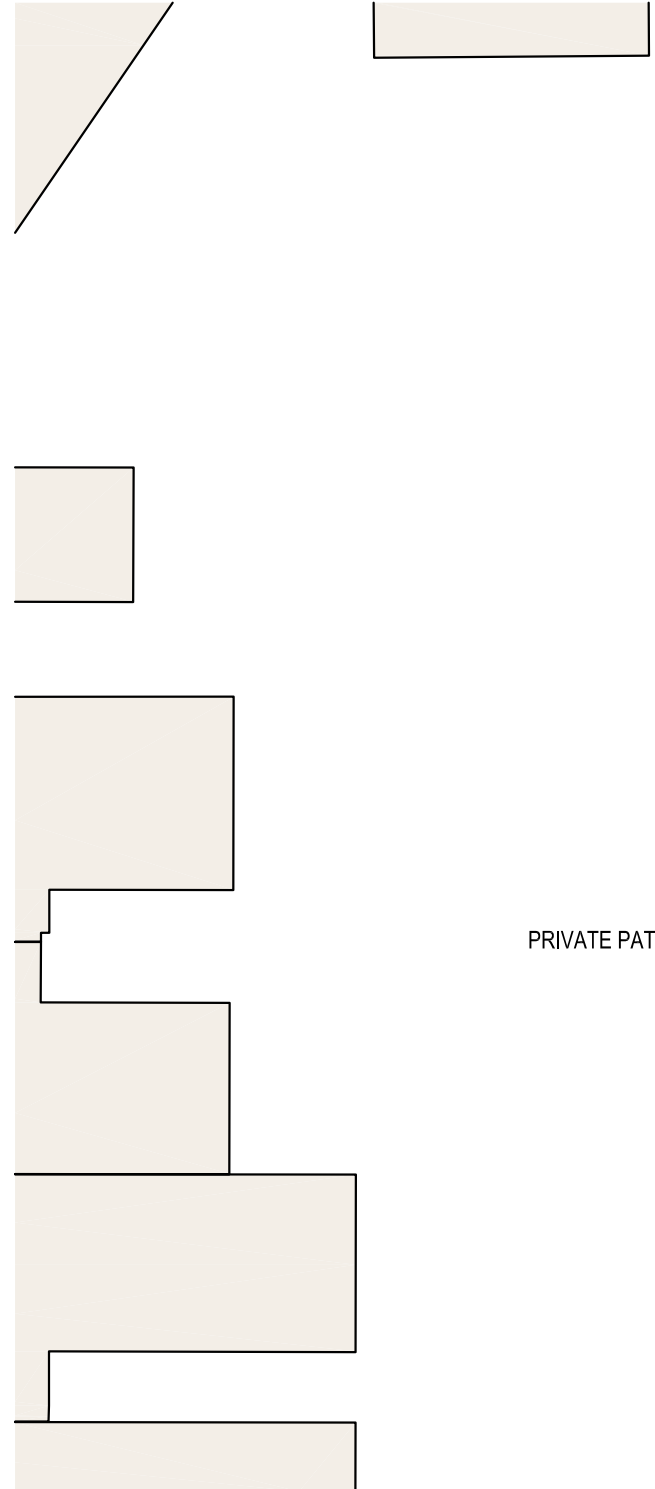
1612-1614 7th St. N.W.  
Washington D.C.  
Square: 420 Lot No: 38 Zone: C-2-A



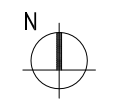
PGN Architects, PLLC  
210 7th Street SE - Suite 201  
Washington, DC 20003  
(P) 202-822-5995 (F) 202-822-0908



w:\15-0031\1612-1614 7th st. nw\drawings\sheet\2\2a sheets\15-0031\_0-10\_proposed second floor plan.dwg



1 PROPOSED SECOND FLOOR PLAN  
SCALE: 1/16" = 1'



1612-1616 7TH ST. N.W.

PROPOSED SECOND FLOOR PLAN A-10

1612-1614 7th St. N.W.  
Washington D.C.  
Square: 420 Lot No: 38 Zone: C-2-A

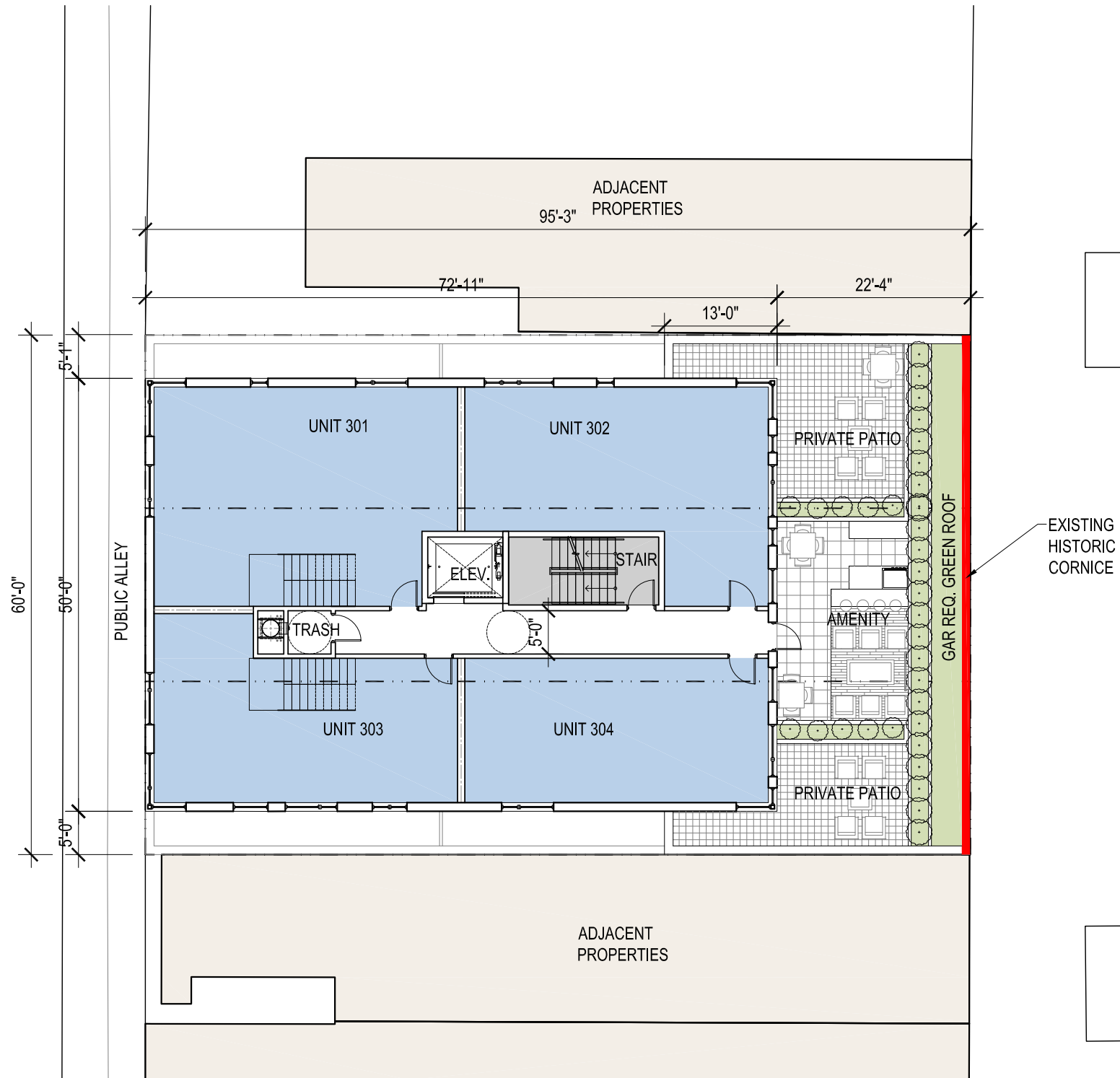
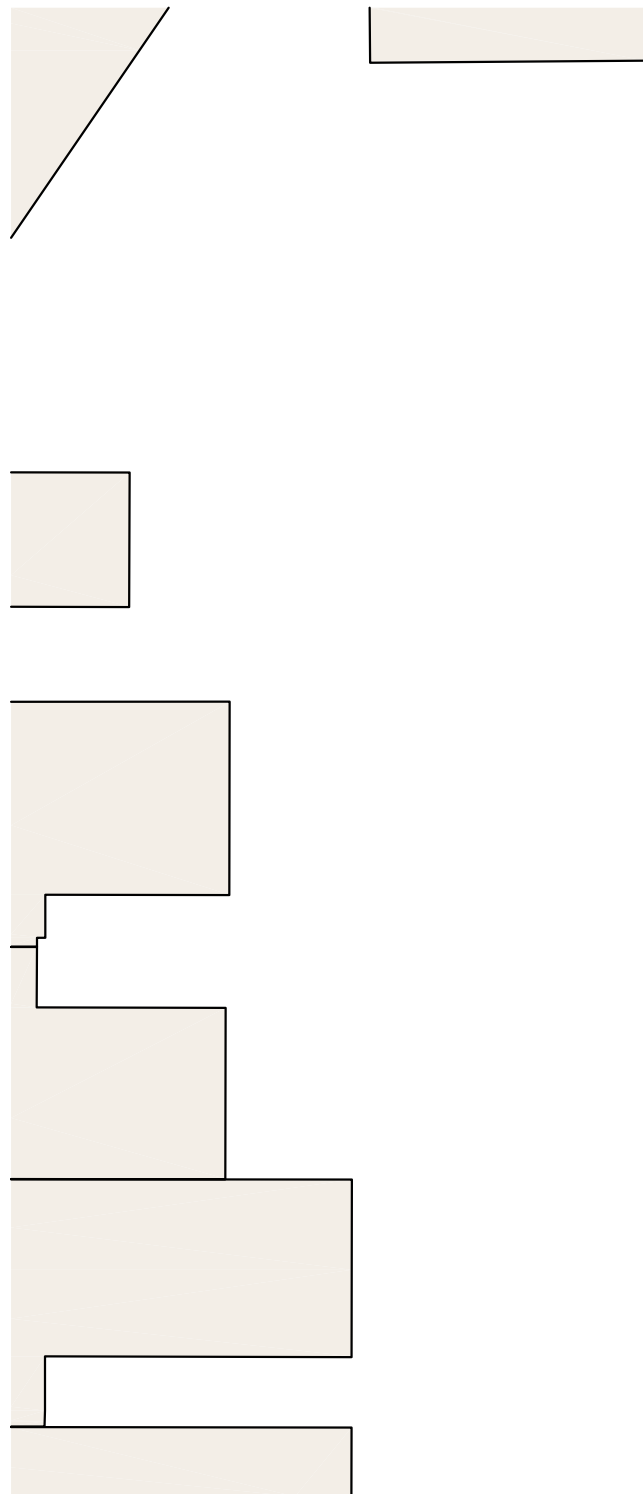


PGN Architects, PLLC  
210 7th Street SE - Suite 201  
Washington, DC 20003  
(P) 202-822-5995 (F) 202-822-0908

03/02/2016



w:\15-0031\_1612-1614\_7th st. nw\drawings\sheet\3rd sheets\15-0031\_011\_proposed 3rd floor plan.dwg



1 PROPOSED THIRD FLOOR PLAN  
SCALE: 1/16" = 1'



1612-1616 7TH ST. N.W.

PROPOSED THIRD FLOOR PLAN A-11

1612-1614 7th St. N.W.  
Washington D.C.  
Square: 420 Lot No: 38 Zone: C-2-A

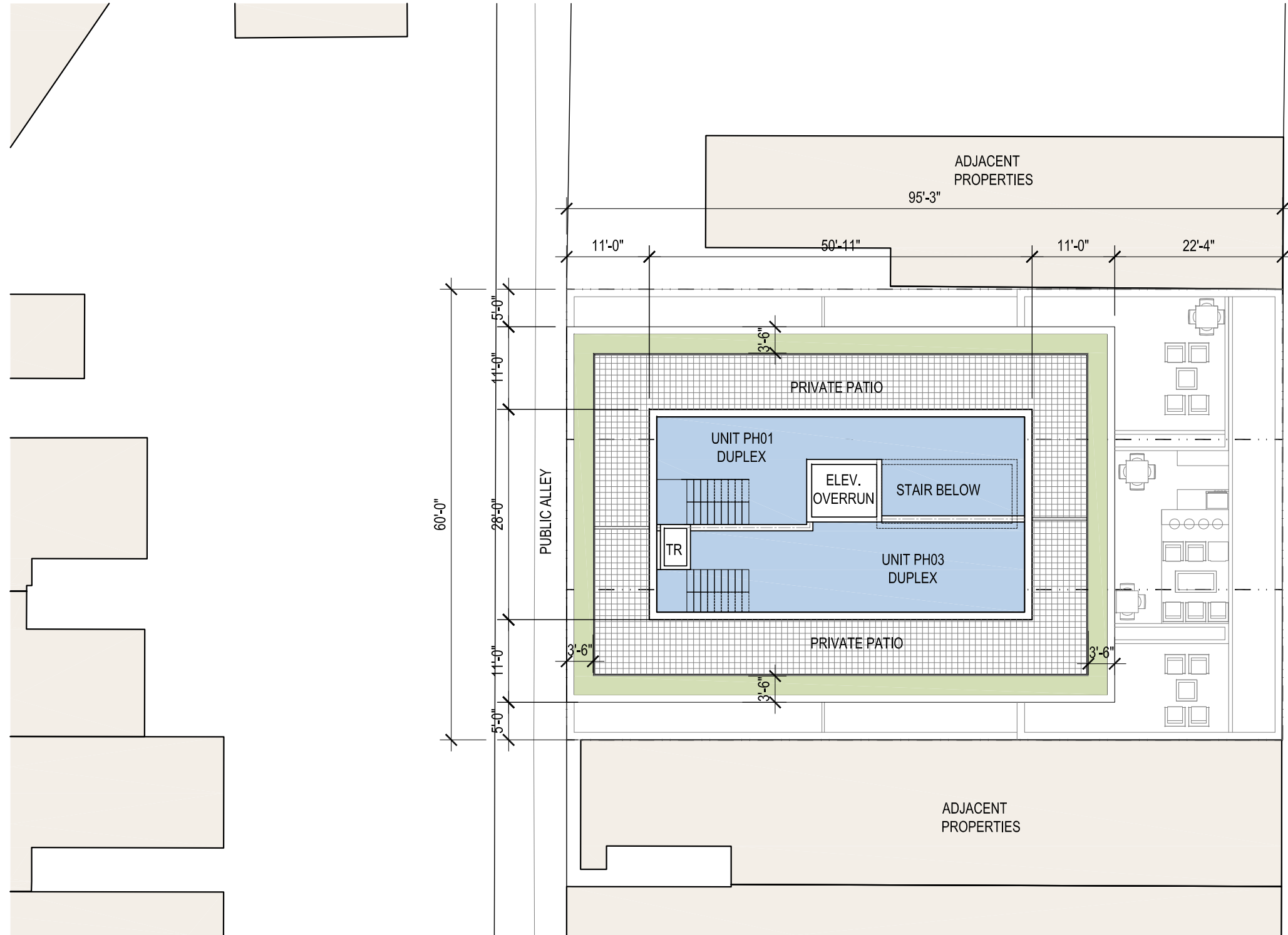
**PGN** ARCHITECTS  
PGN Architects, PLLC  
210 7th Street SE - Suite 201  
Washington, DC 20003  
(P) 202-822-5995 (F) 202-822-0908

03/02/2016

COPYRIGHT © 2015 PGN ARCHITECTS, PLLC



w:\15-0031\_1612-1614\_7th st. n.w.\drawings\sheets\pzn sheets\15-0031\_a12\_proposed penthouse floor plan.dwg



1 PROPOSED PENTHOUSE FLOOR PLAN  
SCALE: 1/16" = 1'

1612-1616 7TH ST. N.W.

1612-1614 7th St. N.W.  
Washington D.C.  
Square: 420 Lot No: 38 Zone: C-2-A



PGN Architects, PLLC  
210 7th Street SE - Suite 201  
Washington, DC 20003  
(P) 202-822-5995 (F) 202-822-0908

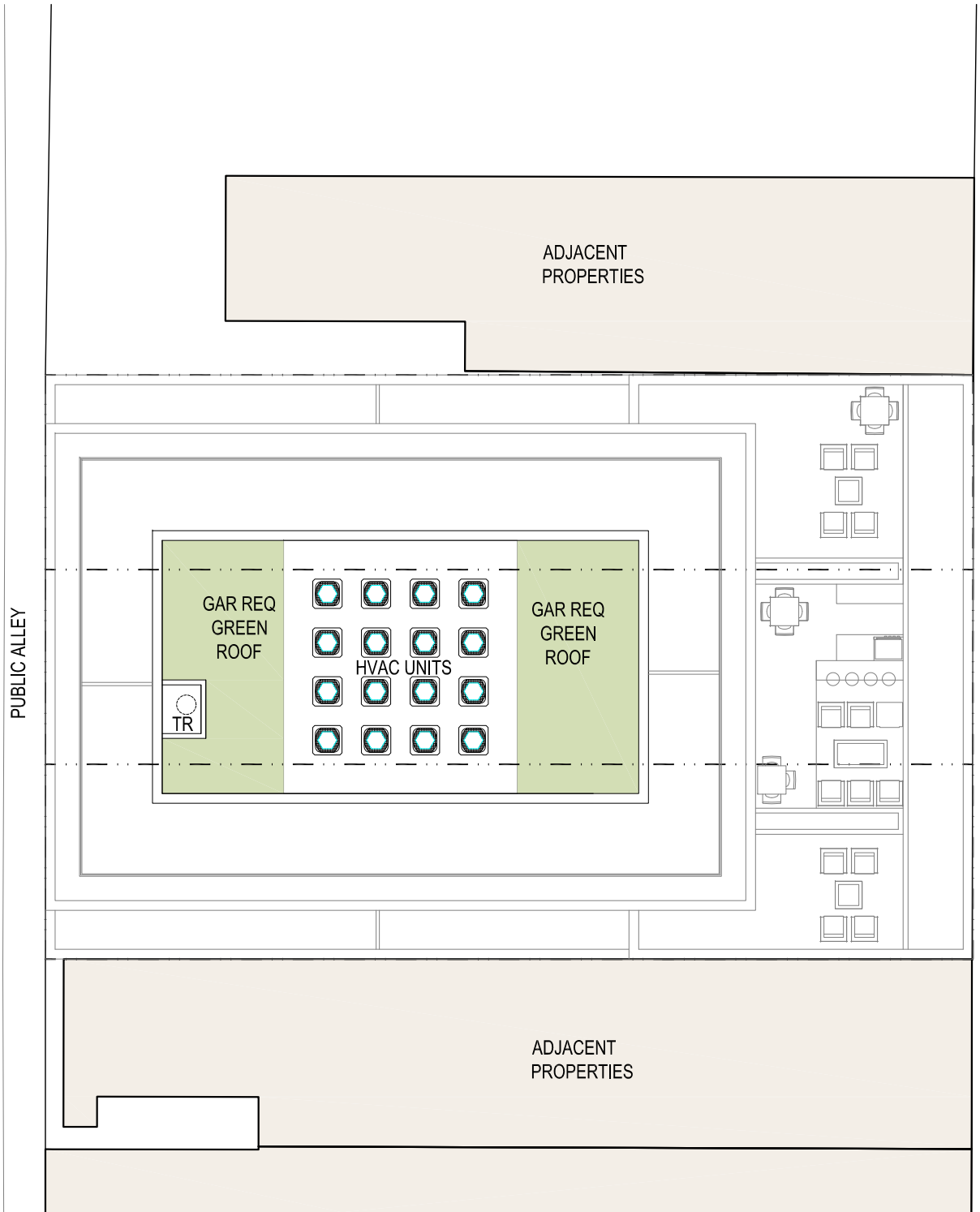
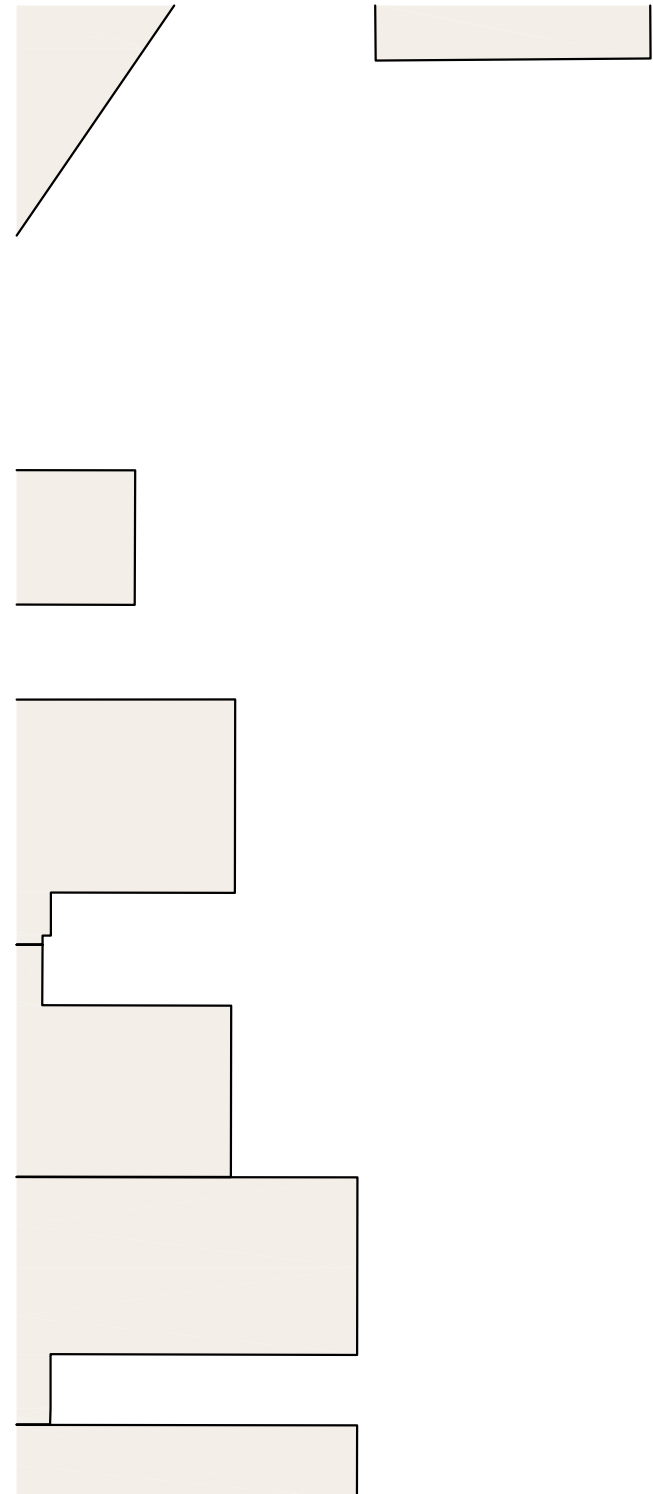
PROPOSED PENTHOUSE FLOOR PLAN



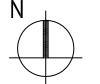
A-12  
03/02/2016



w:\15-0031\_1612-1614\_7th\_st\_nw\drawings\sheets\lbr\15-0031\_a13\_proposed\_roof\_floor\_plan.dwg



1 PROPOSED ROOF FLOOR PLAN  
SCALE: 1/16" = 1'



1612-1614 7TH ST. N.W.

1612-1614 7th St. N.W.  
Washington D.C.  
Square: 420 Lot No: 38 Zone: C-2-A

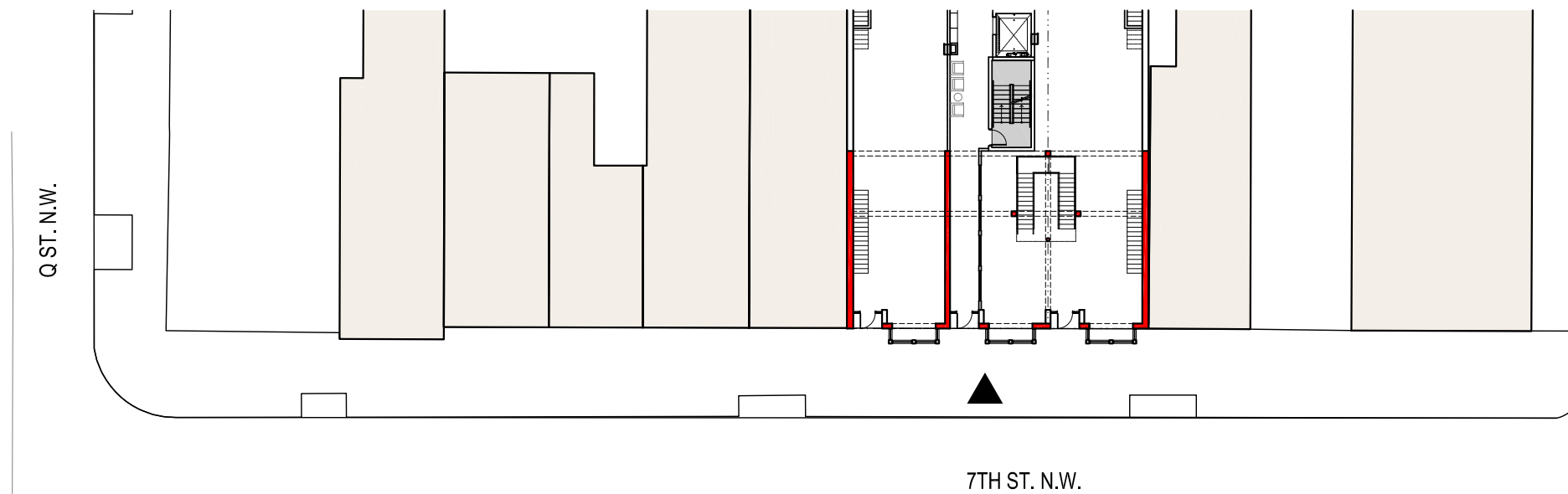


PGN Architects, PLLC  
210 7th Street SE - Suite 201  
Washington, DC 20003  
(P) 202-822-5995 (F) 202-822-0908





1 EAST STREETScape ELEVATION  
SCALE: 1/32" = 1'



2 STREETScape PLAN  
SCALE: 1/32" = 1'

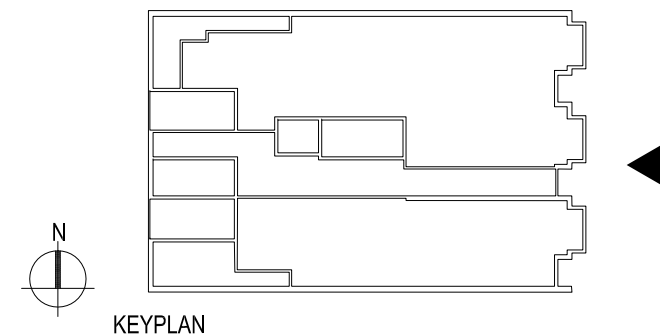
1612-1616 7TH ST. N.W.

1612-1614 7th St. N.W.  
Washington D.C.  
Square: 420 Lot No: 38 Zone: C-2-A

**PGN** ARCHITECTS  
PGN Architects, PLLC  
210 7th Street SE - Suite 201  
Washington, DC 20003  
(P) 202-822-5995 (F) 202-822-0908



1 PROPOSED EAST ELEVATION  
SCALE: 1/16" = 1'



1612-1616 7TH ST. N.W.

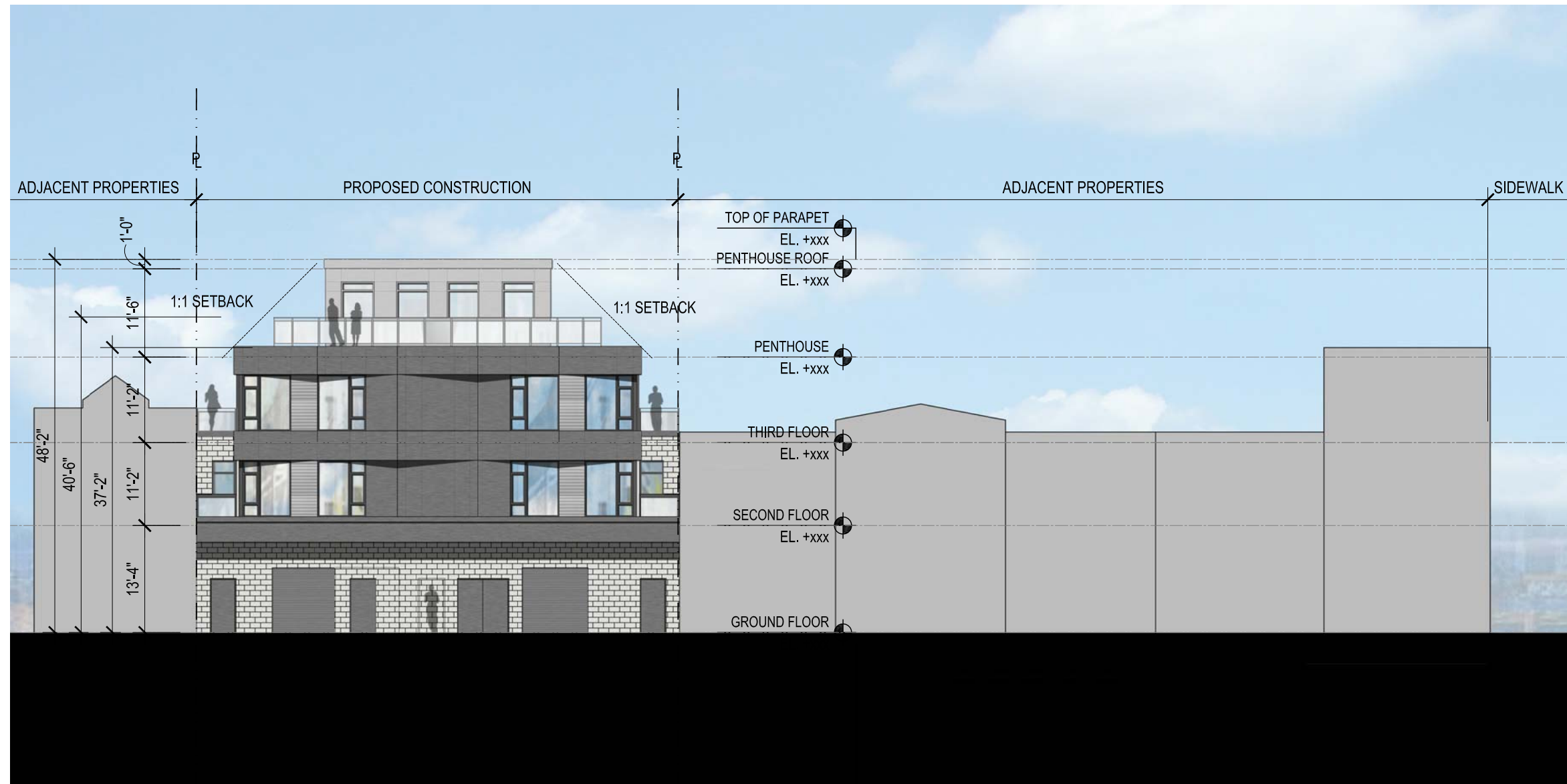
1612-1614 7th St. N.W.  
Washington D.C.  
Square: 420 Lot No: 38 Zone: C-2-A

**PGN** ARCHITECTS  
PGN Architects, PLLC  
210 7th Street SE - Suite 201  
Washington, DC 20003  
(P) 202-822-5995 (F) 202-822-0908

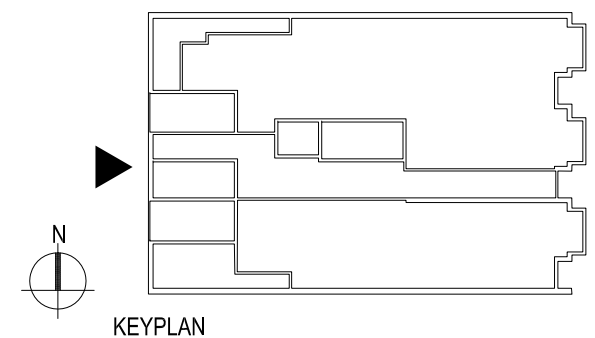
PROPOSED EAST ELEVATION | A-15

03/02/2016





1 PROPOSED WEST ELEVATION  
SCALE: 1/16" = 1'



1612-1616 7TH ST. N.W.

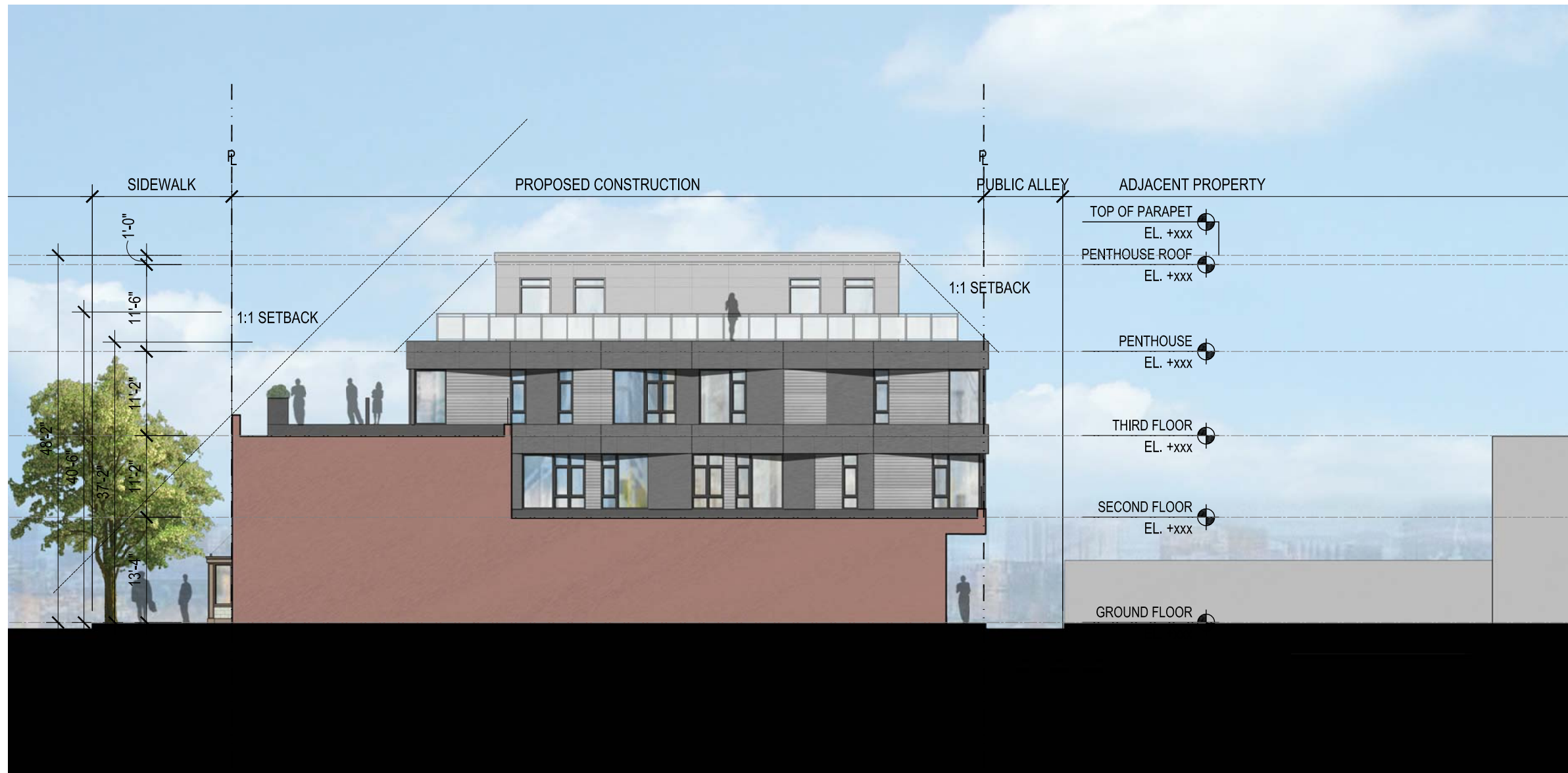
1612-1614 7th St. N.W.  
Washington D.C.  
Square: 420 Lot No: 38 Zone: C-2-A



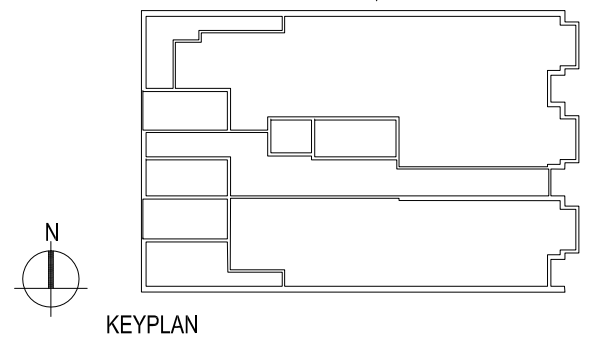
PGN Architects, PLLC  
210 7th Street SE - Suite 201  
Washington, DC 20003  
(P) 202-822-5995 (F) 202-822-0908

PROPOSED WEST ELEVATION | A-16

03/02/2016



1 PROPOSED NORTH ELEVATION  
SCALE: 1/16" = 1'



1612-1616 7TH ST. N.W.

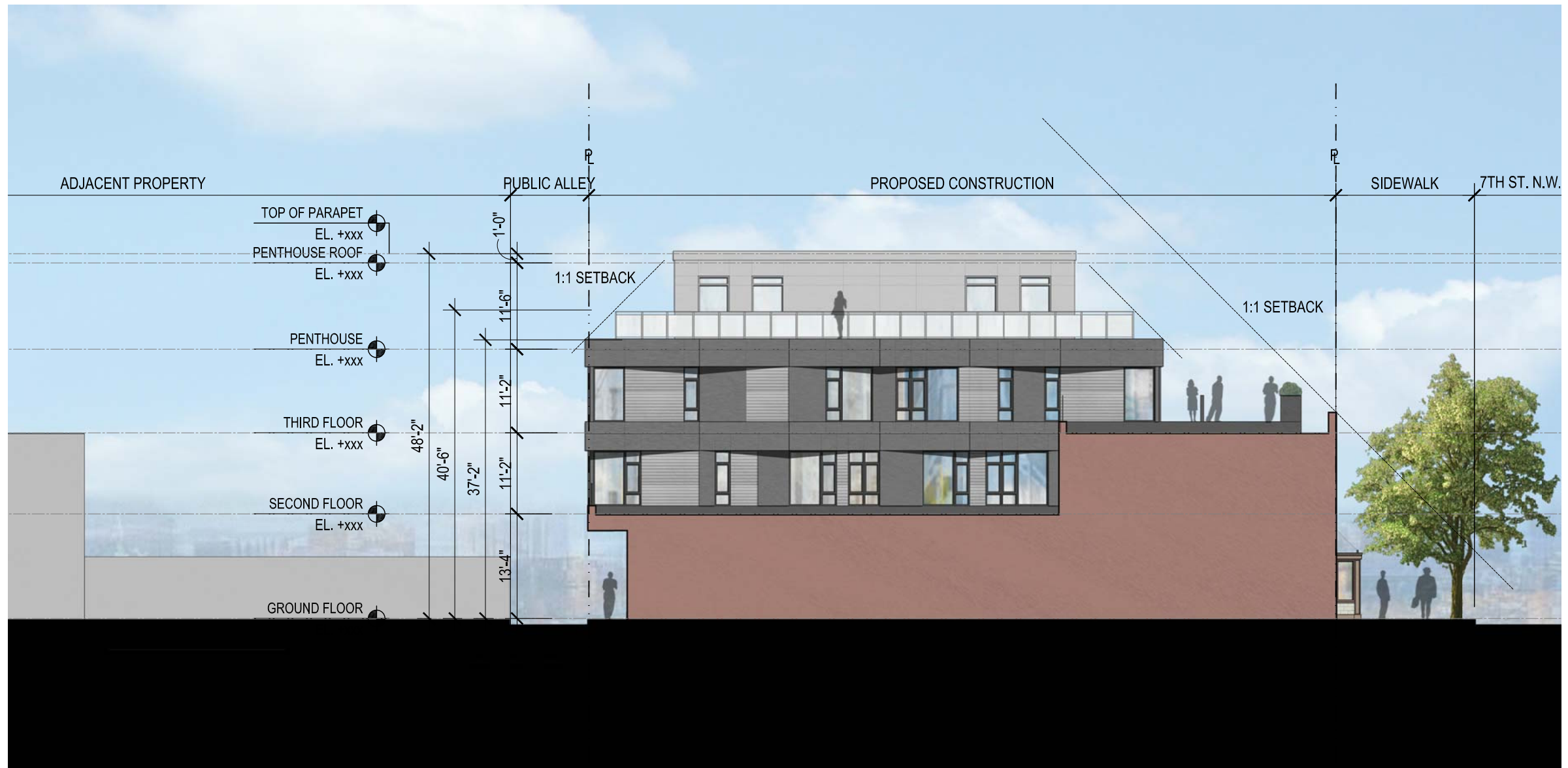
1612-1614 7th St. N.W.  
Washington D.C.  
Square: 420 Lot No: 38 Zone: C-2-A



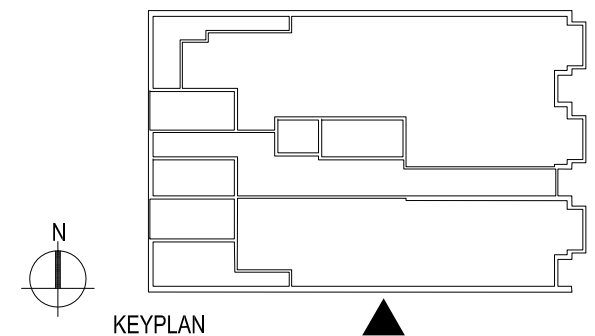
PGN Architects, PLLC  
210 7th Street SE - Suite 201  
Washington, DC 20003  
(P) 202-822-5995 (F) 202-822-0908

w:\15-0031\_1612-1614\_7th\_st\_nw\drawings\sheets\lbrz\sheets\15-0031\_a17\_proposed\_north\_elevation.dwg





1 PROPOSED SOUTH ELEVATION  
SCALE: 1/16" = 1'



1612-1616 7TH ST. N.W.

1612-1614 7th St. N.W.  
Washington D.C.  
Square: 420 Lot No: 38 Zone: C-2-A



PGN Architects, PLLC  
210 7th Street SE - Suite 201  
Washington, DC 20003  
(P) 202-822-5995 (F) 202-822-0908

PROPOSED SOUTH ELEVATION | A-18

03/02/2016





1 PROPOSED PERSPECTIVE RENDERING  
SCALE: N.T.S.

## 1612-1616 7TH ST. N.W.

1612-1614 7th St. N.W.  
Washington D.C.  
Square: 420 Lot No: 38 Zone: C-2-A



PGN Architects, PLLC  
210 7th Street SE - Suite 201  
Washington, DC 20003  
(P) 202-822-5995 (F) 202-822-0908

PROPOSED PERSPECTIVE RENDERING

A-19

03/02/2016





1 PROPOSED PERSPECTIVE RENDERING - STREETScape  
SCALE: N.T.S.

## 1612-1614 7TH ST. N.W.

1612-1614 7th St. N.W.  
Washington D.C.  
Square: 420 Lot No: 38 Zone: C-2-A



PGN Architects, PLLC  
210 7th Street SE - Suite 201  
Washington, DC 20003  
(P) 202-822-5995 (F) 202-822-0908

PROPOSED PERSPECTIVE RENDERING

A-20

03/02/2016





1 PROPOSED PERSPECTIVE RENDERING  
SCALE: N.T.S.

## 1612-1616 7TH ST. N.W.

1612-1614 7th St. N.W.  
Washington D.C.  
Square: 420 Lot No: 38 Zone: C-2-A



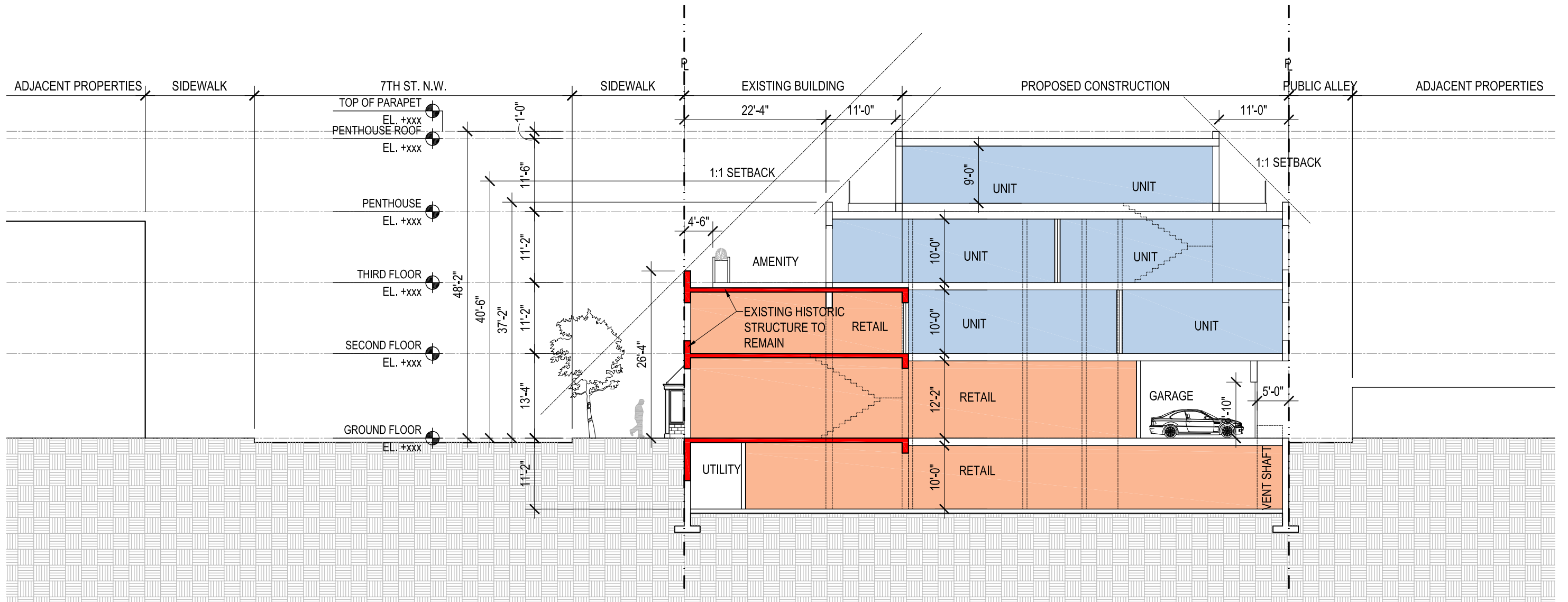
PGN Architects, PLLC  
210 7th Street SE - Suite 201  
Washington, DC 20003  
(P) 202-822-5995 (F) 202-822-0908

PROPOSED PERSPECTIVE RENDERING

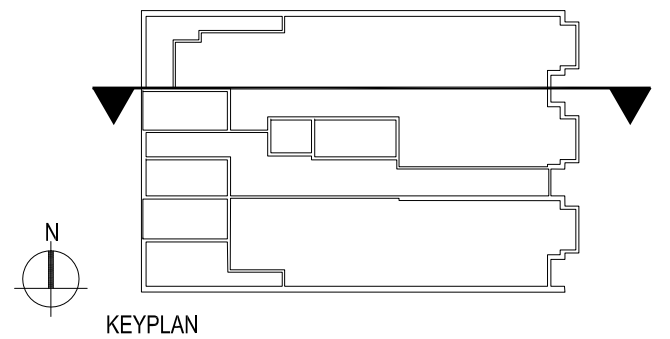
A-21

03/02/2016





1 PROPOSED BUILDING SECTION  
 SCALE: 1/16" = 1'



1612-1616 7TH ST. N.W.

1612-1614 7th St. N.W.  
 Washington D.C.  
 Square: 420 Lot No: 38 Zone: C-2-A

PGN ARCHITECTS  
 PGN Architects, PLLC  
 210 7th Street SE - Suite 201  
 Washington, DC 20003  
 (P) 202-822-5995 (F) 202-822-0908