

KEYPLAN



1



2



3

317 K STREET NW

K St. NW
Washington, DC 20024
Square: 526 Lot No: 20-21, 804-805, 824-825, 829

COPYRIGHT © 2015 PGN ARCHITECTS, PLLC



PGN Architects, PLLC
210 7th Street SE - Suite 201
Washington, DC 20003
(P) 202-822-5995 (F) 202-822-0908

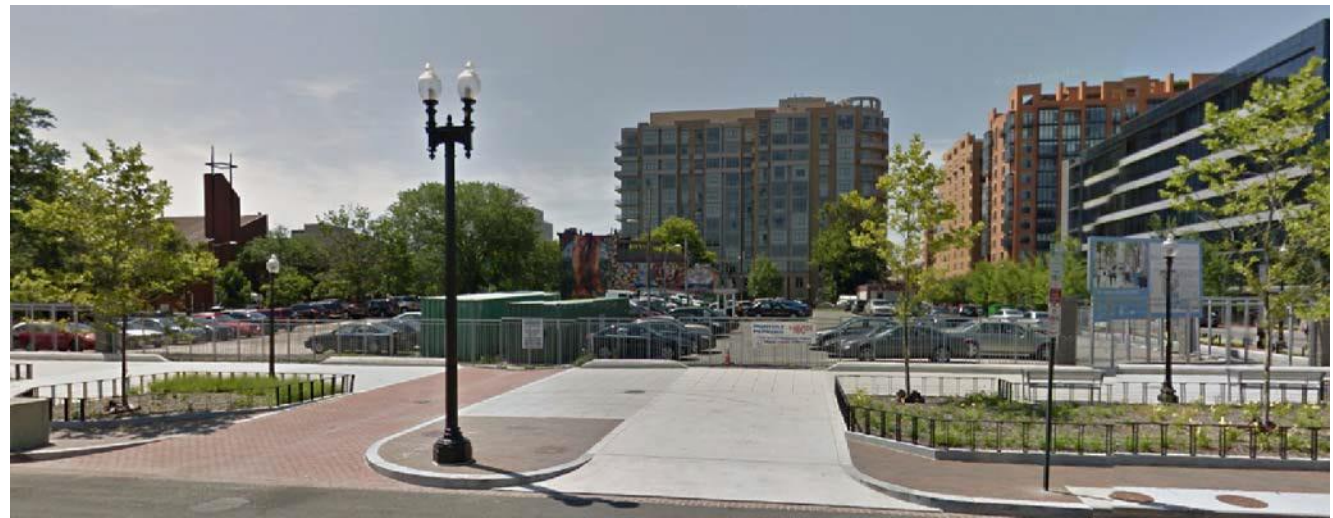
KEYPLAN



4



5



6

317 K STREET NW

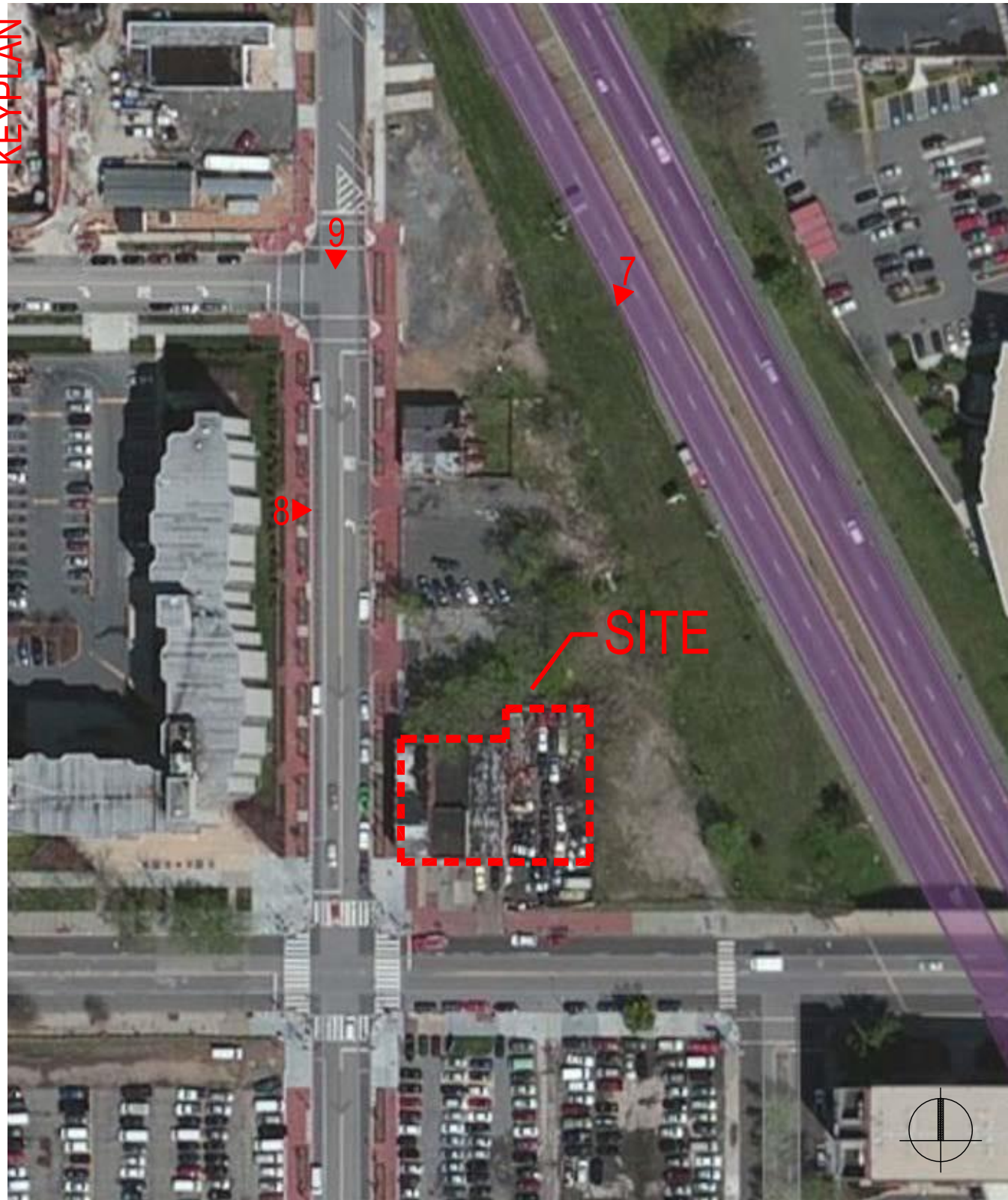
K St. NW
 Washington, DC 20024
 Square: 526 Lot No: 20-21, 804-805, 824-825, 829

COPYRIGHT © 2015 PGN ARCHITECTS, PLLC



PGN Architects, PLLC
 210 7th Street SE - Suite 201
 Washington, DC 20003
 (P) 202-822-5995 (F) 202-822-0908

KEYPLAN



7



8



9

317 K STREET NW

K St. NW
 Washington, DC 20024
 Square: 526 Lot No: 20-21, 804-805, 824-825, 829

COPYRIGHT © 2015 PGN ARCHITECTS, PLLC

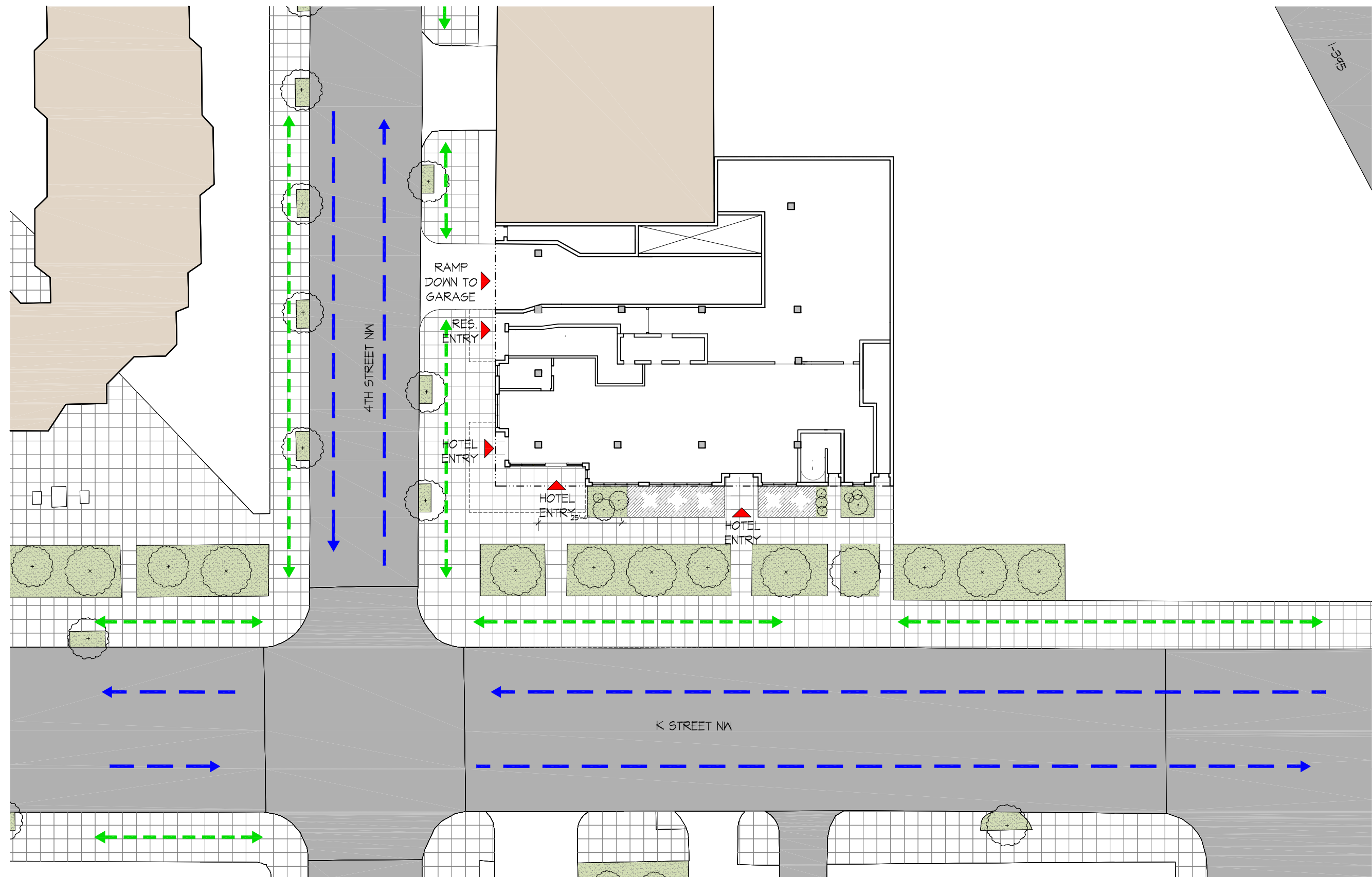


PGN Architects, PLLC
 210 7th Street SE - Suite 201
 Washington, DC 20003
 (P) 202-822-5995 (F) 202-822-0908

CONTEXT PHOTOS

A-07

02-11-2016



1 SITE PLAN
SCALE: 1" = 30'-0"

←---→ 2 WAY STREET
 ←---→ 1 WAY STREET
 ←---→ PEDESTRIAN CIRCULATION

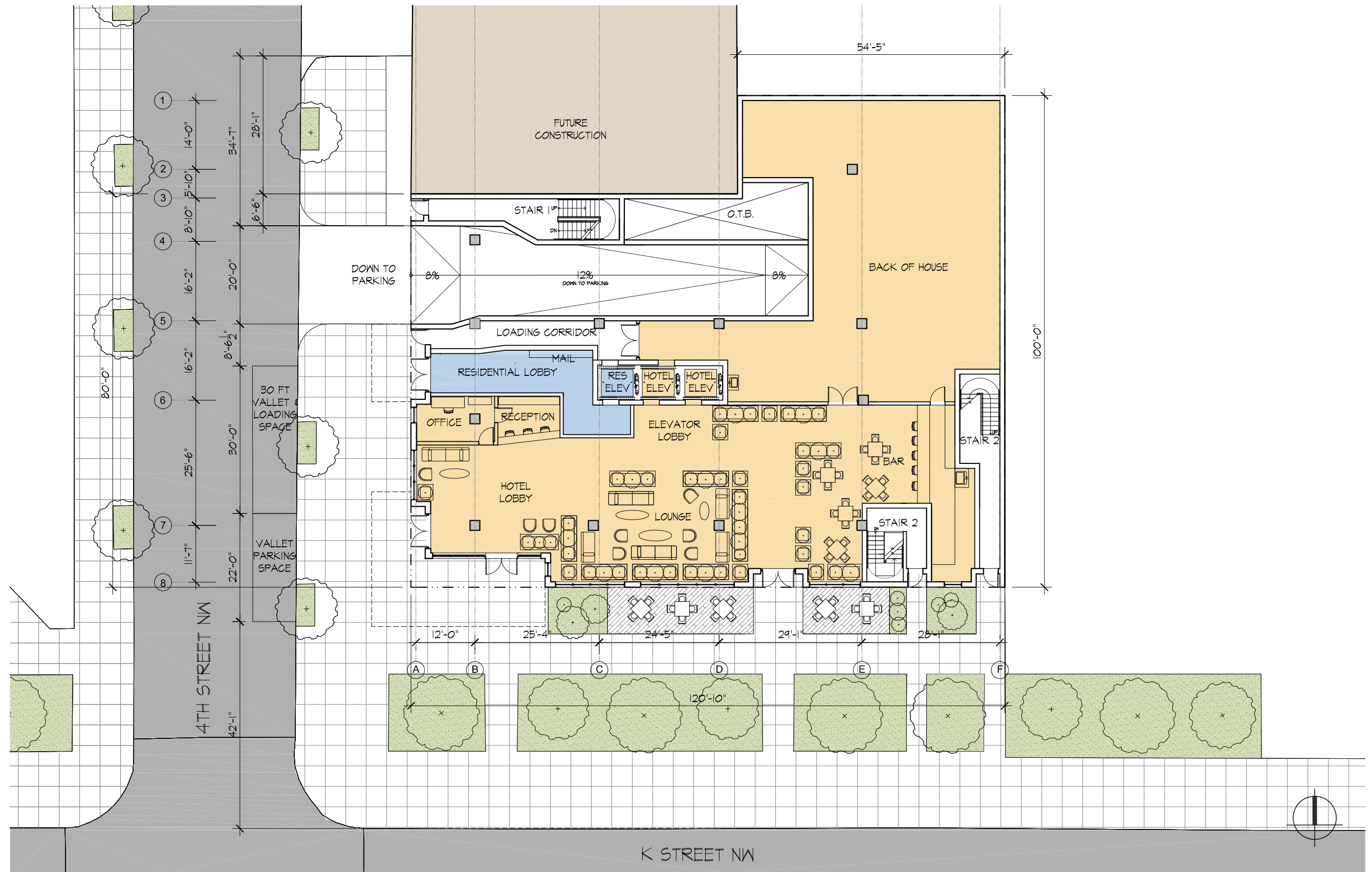
317 K STREET NW

K St. NW
 Washington, DC 20024
 Square: 526 Lot No: 20-21, 804-805, 824-825, 829



PGN Architects, PLLC
 210 7th Street SE - Suite 201
 Washington, DC 20003
 (P) 202-822-5995 (F) 202-822-0908

COPYRIGHT © 2015 PGN ARCHITECTS, PLLC



1 GROUND FLOOR PLAN
SCALE: 1" = 20'-0"

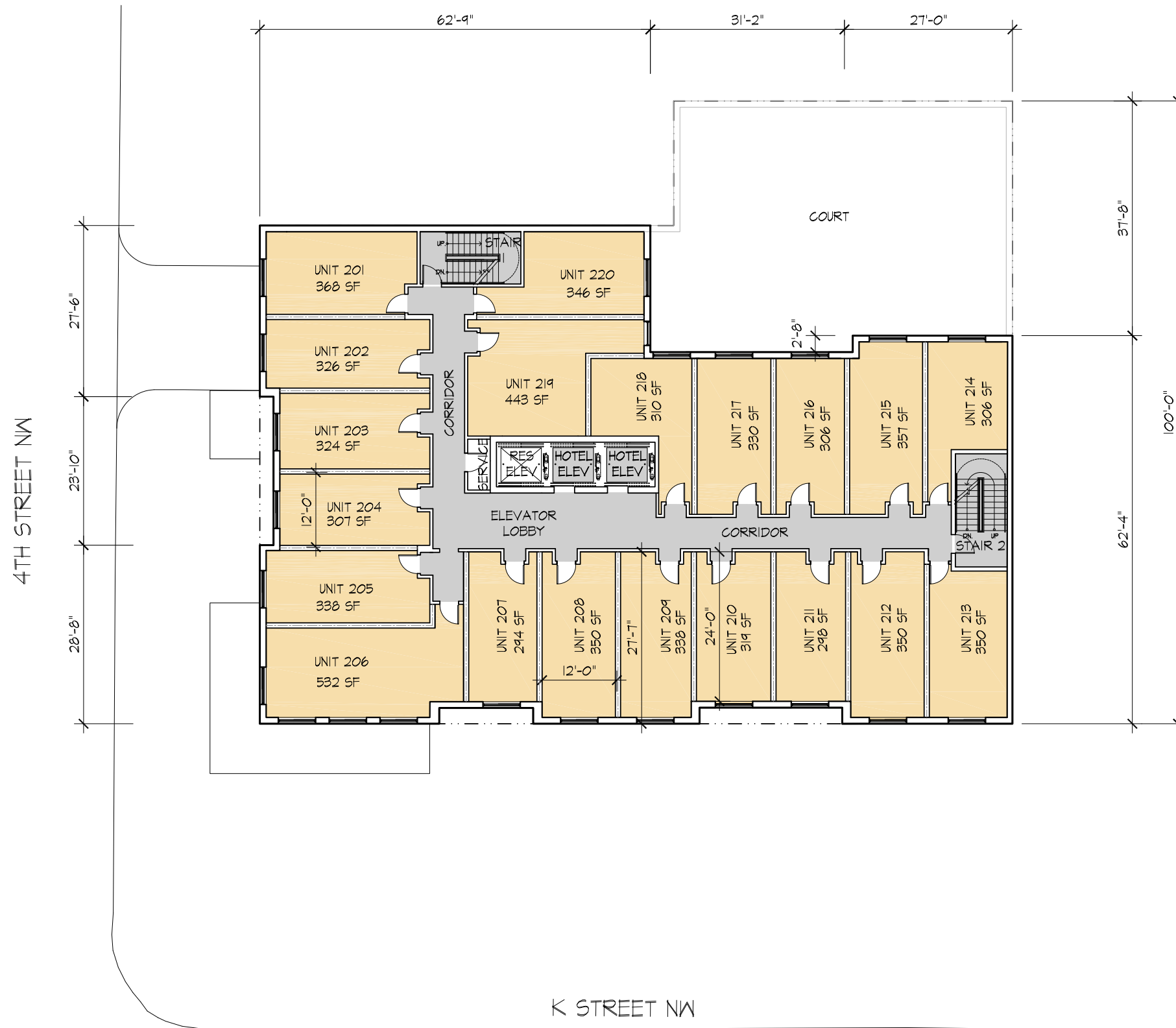
317 K STREET NW

K St. NW
Washington, DC 20024
Square: 526 Lot No: 20-21, 804-805, 824-825, 829



PGN Architects, PLLC
210 7th Street SE - Suite 201
Washington, DC 20003
(P) 202-822-5995 (F) 202-822-0908

COPYRIGHT © 2015 PGN ARCHITECTS, PLLC



1 TYPICAL HOTEL PLAN (2-11)
SCALE: 1" = 20'-0"

317 K STREET NW

K St. NW
Washington, DC 20024
Square: 526 Lot No: 20-21, 804-805, 824-825, 829

COPYRIGHT © 2015 PGN ARCHITECTS, PLLC

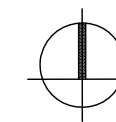
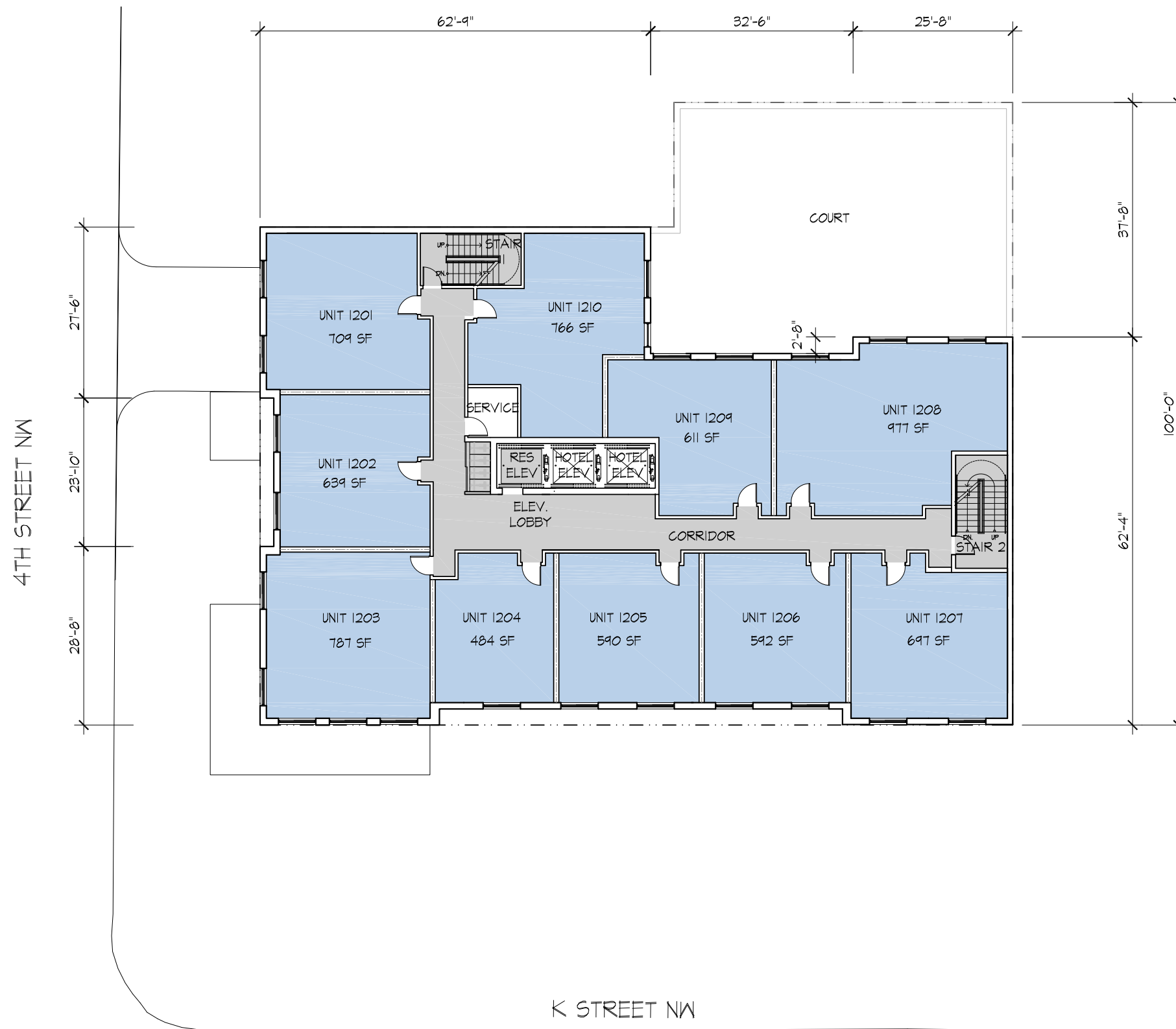


PGN Architects, PLLC
210 7th Street SE - Suite 201
Washington, DC 20003
(P) 202-822-5995 (F) 202-822-0908

TYPICAL HOTEL FLOOR PLAN (2-11)

A-10

02-11-2016



1 TYPICAL RESIDENTIAL PLAN (12-14)
SCALE: 1" = 20'-0"

317 K STREET NW

K St. NW
Washington, DC 20024
Square: 526 Lot No: 20-21, 804-805, 824-825, 829

COPYRIGHT © 2015 PGN ARCHITECTS, PLLC

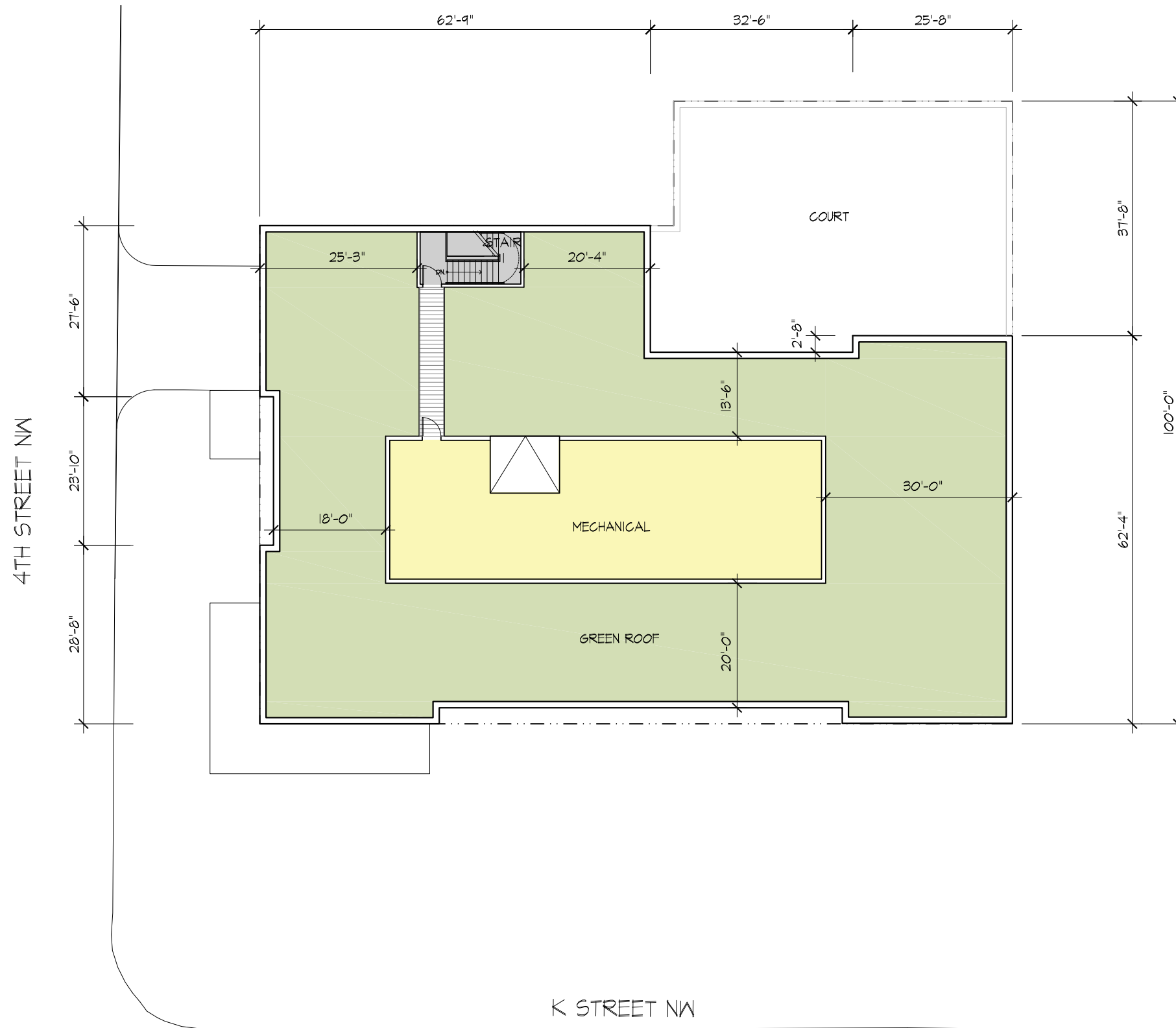


PGN Architects, PLLC
210 7th Street SE - Suite 201
Washington, DC 20003
(P) 202-822-5995 (F) 202-822-0908

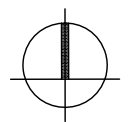
TYPICAL APARTMENT FLOOR PLAN (12-14)

A-11

02-11-2016



1 ROOF PLAN
SCALE: 1" = 20'-0"



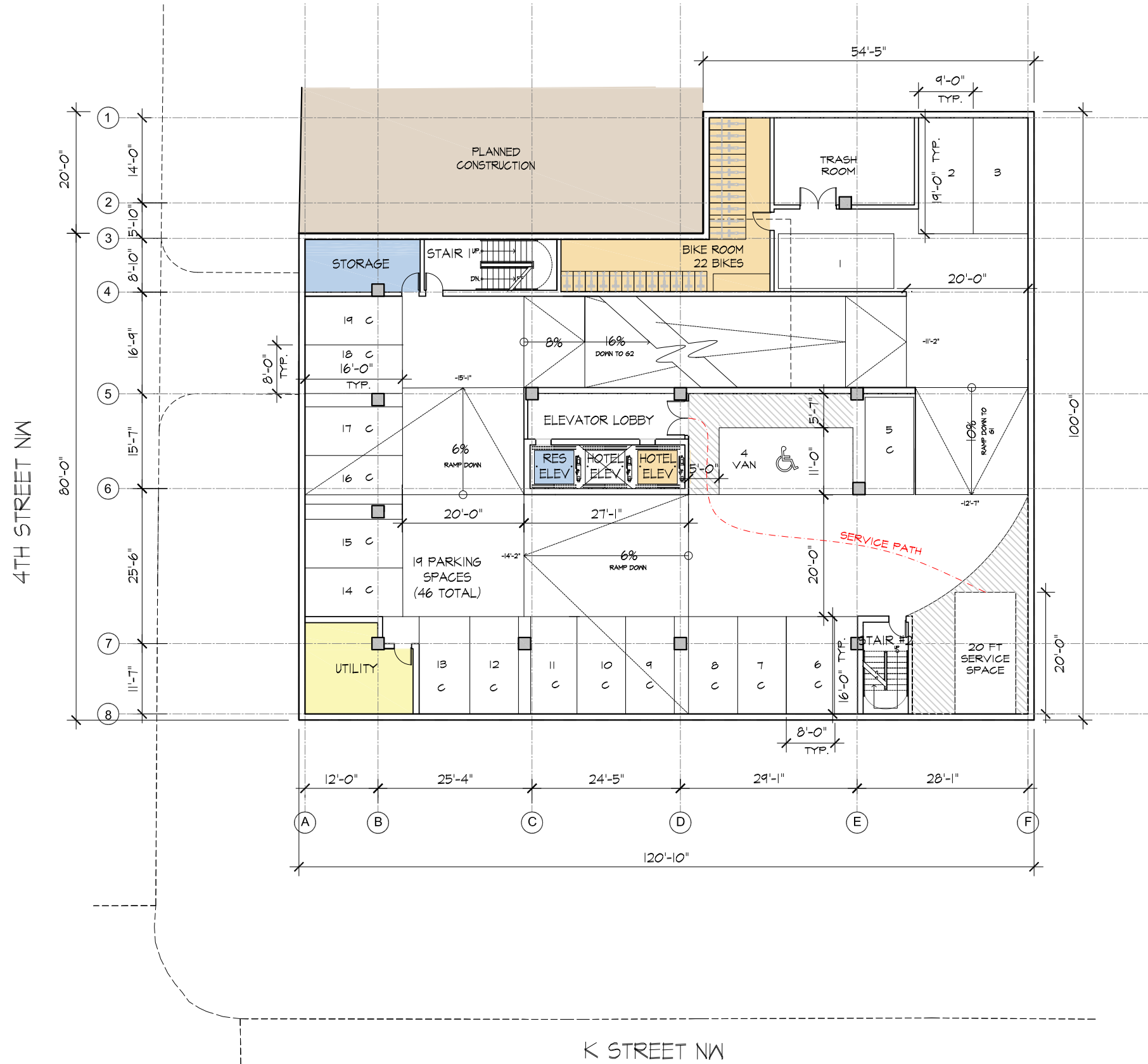
317 K STREET NW

K St. NW
Washington, DC 20024
Square: 526 Lot No: 20-21, 804-805, 824-825, 829

COPYRIGHT © 2015 PGN ARCHITECTS, PLLC



PGN Architects, PLLC
210 7th Street SE - Suite 201
Washington, DC 20003
(P) 202-822-5995 (F) 202-822-0908



1 GARAGE PLAN-G1
SCALE: 1" = 20'-0"

317 K STREET NW

K St. NW
Washington, DC 20024
Square: 526 Lot No: 20-21, 804-805, 824-825, 829



PGN Architects, PLLC
210 7th Street SE - Suite 201
Washington, DC 20003
(P) 202-822-5995 (F) 202-822-0908



1 GARAGE PLAN- G2
SCALE: 1" = 20'-0"

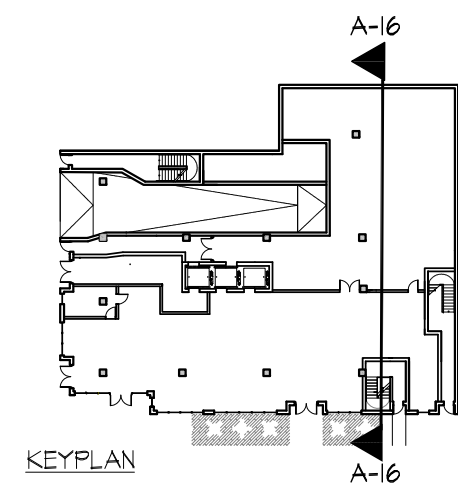
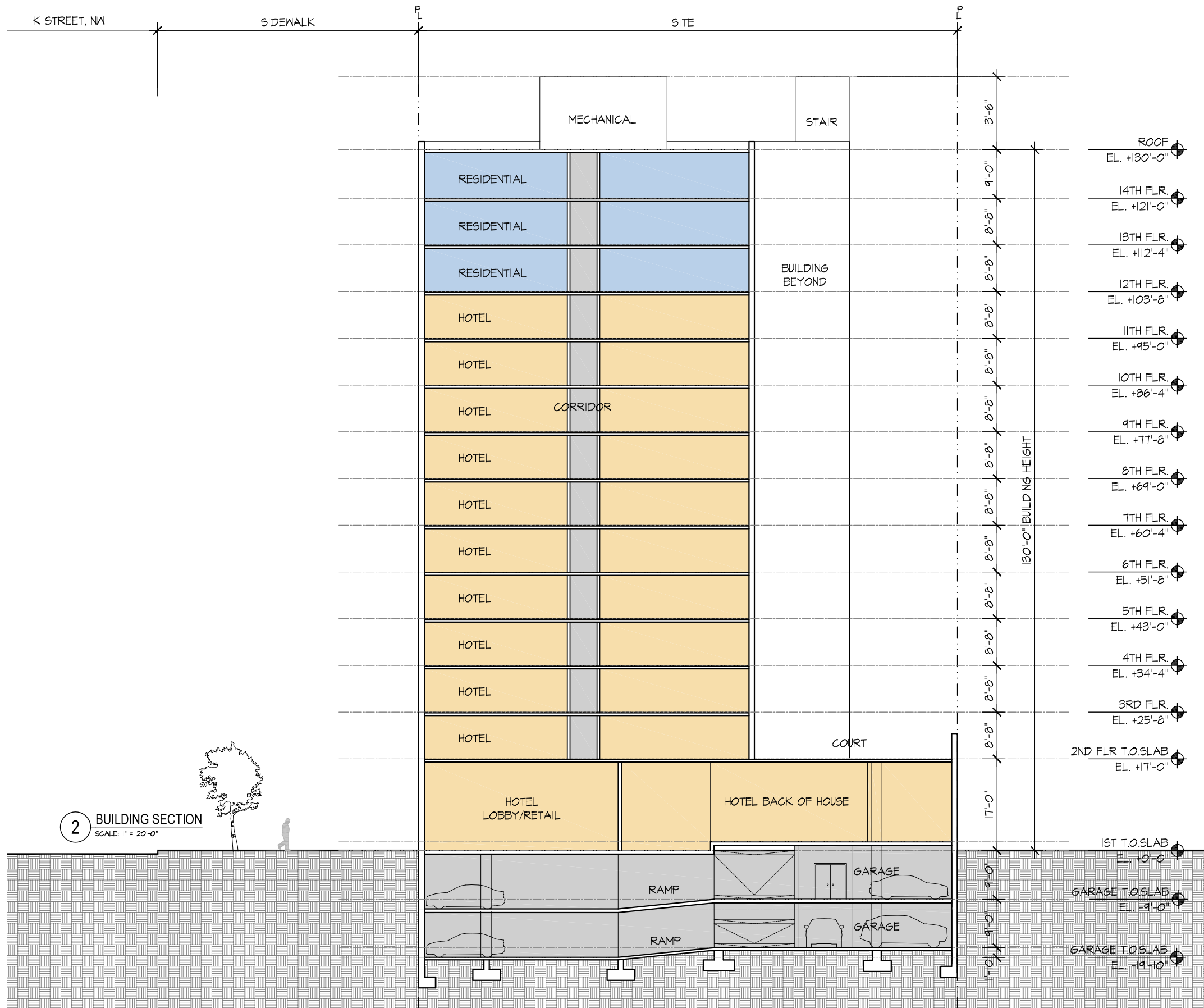
317 K STREET NW

K St. NW
Washington, DC 20024
Square: 526 Lot No: 20-21, 804-805, 824-825, 829

COPYRIGHT © 2015 PGN ARCHITECTS, PLLC



PGN Architects, PLLC
210 7th Street SE - Suite 201
Washington, DC 20003
(P) 202-822-5995 (F) 202-822-0908



317 K STREET NW

K St. NW
Washington, DC 20024
Square: 526 Lot No: 20-21, 804-805, 824-825, 829



PGN Architects, PLLC
210 7th Street SE - Suite 201
Washington, DC 20003
(P) 202-822-5995 (F) 202-822-0908



317 K STREET NW

K St. NW
Washington, DC 20024
Square: 526 Lot No: 20-21, 804-805, 824-825, 829

COPYRIGHT © 2015 PGN ARCHITECTS, PLLC



PGN Architects, PLLC
210 7th Street SE - Suite 201
Washington, DC 20003
(P) 202-822-5995 (F) 202-822-0908

BUILDING PERSPECTIVE

A-17

02-11-2016