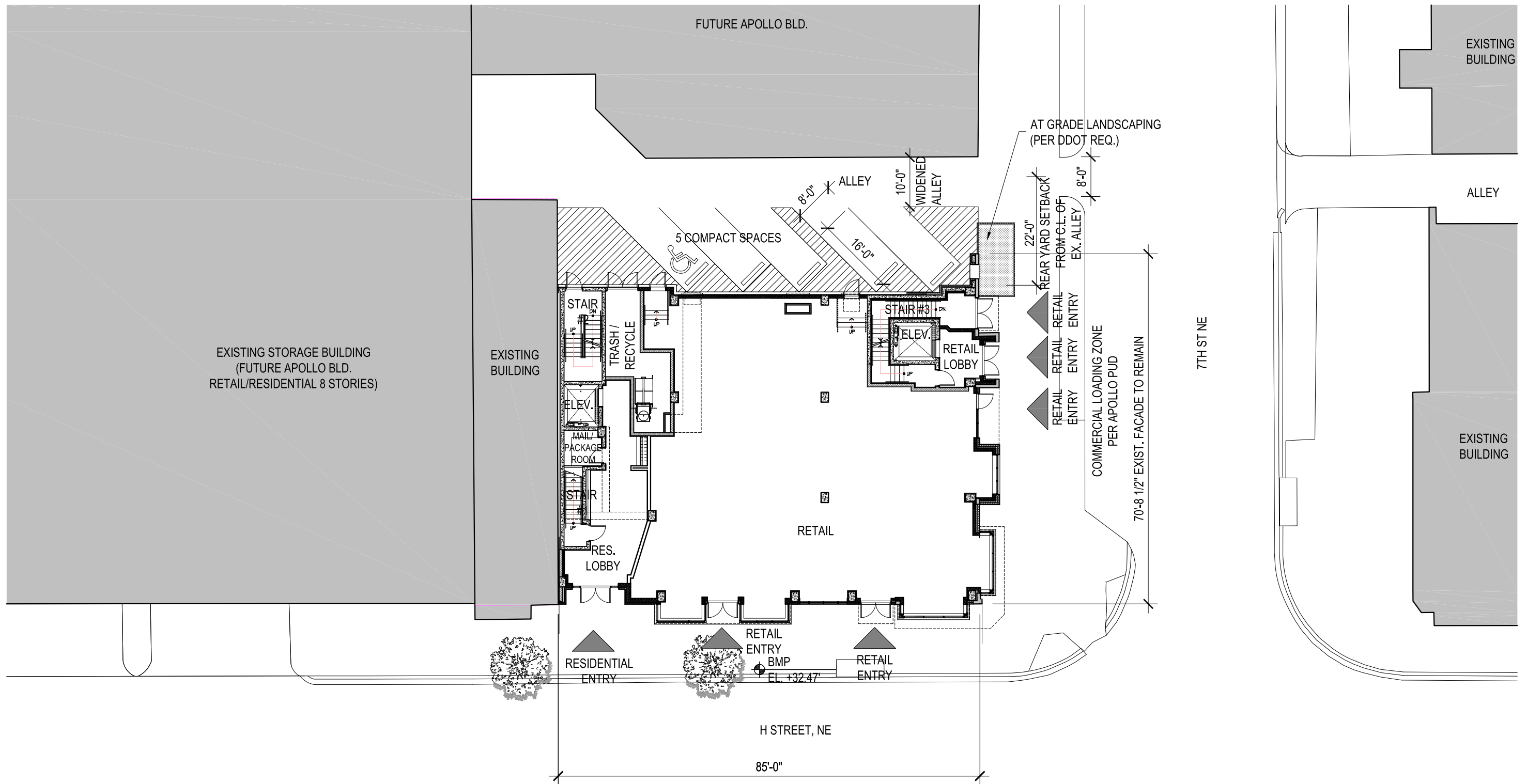


5/24/2016 2:33:18 PM

\\14-0000_646-654_h st ne\drawings\sheet\646-654_01-0000_01 - ground floor plan.dwg



1 GROUND FLOOR PLAN
SCALE: 1" = 20'-0"

646 - 654 H STREET, NE

646-654 H Street, NE
Washington, DC
Square: 858 Lot No: 65 Zone: HS-H / C-2-B

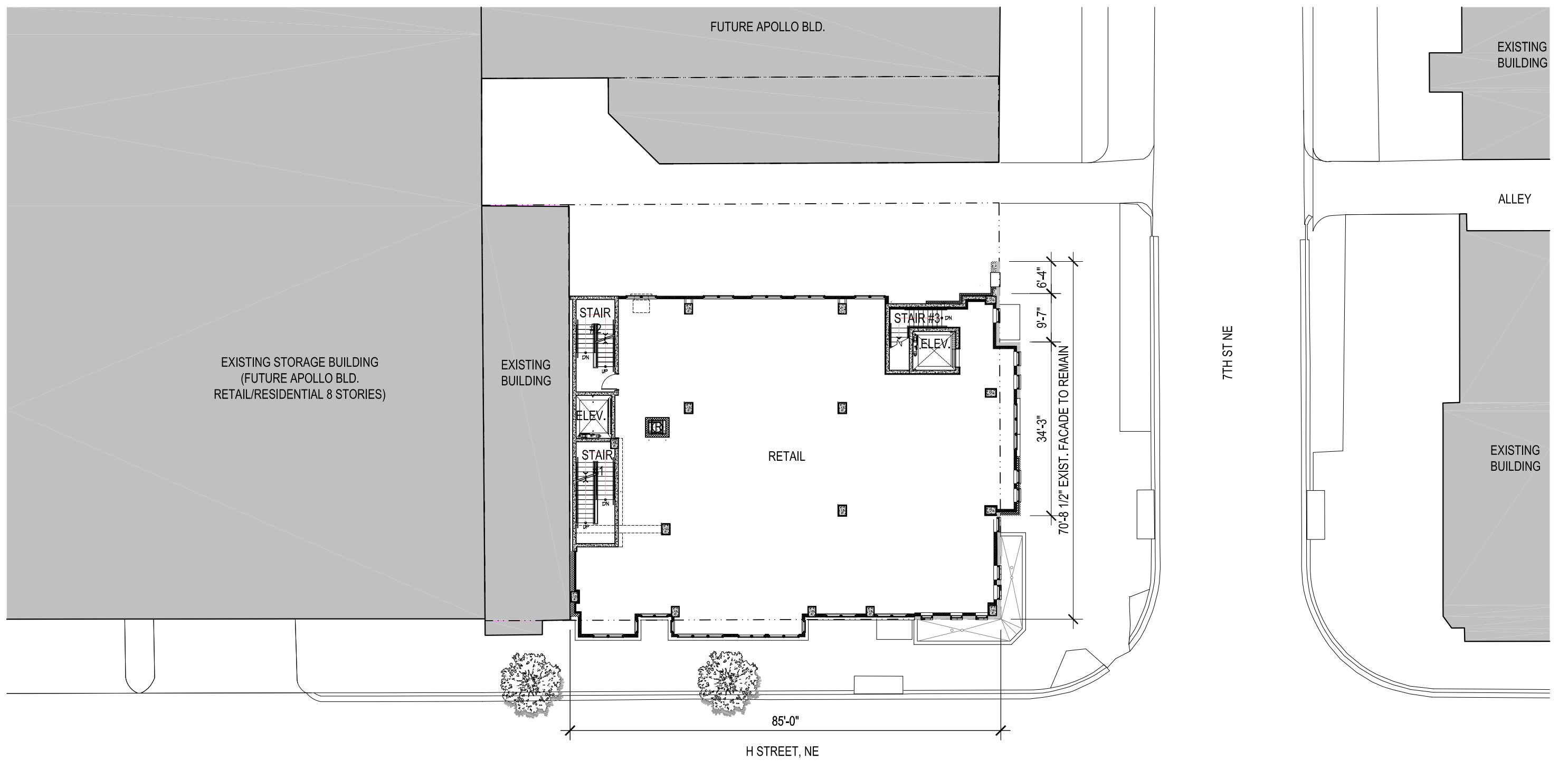
PGN ARCHITECTS
PGN Architects, PLLC
210 7th Street SE - Suite 201
Washington, DC 20003
(P) 202-822-5995

ROCK CREEK PROPERTY GROUP
Rock Creek Property Group, LLC
1155 Connecticut Ave., NW Suite 700
Washington, DC 20036
(P) 202-835-1200

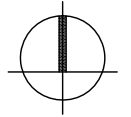
CORNERSTONE DEVELOPMENT GROUP
Cornerstone Development Group
3701 Pender Drive, Suite 200A
Fairfax, VA 22030
(P) 703-503-5555

5/24/2016 2:14:25 PM

\\14-0000_646-654_h_st_ne\drawings\sheet\2014-0000_a.2 - second floor plan.dwg



1 SECOND FLOOR PLAN
SCALE: 1" = 20'-0"



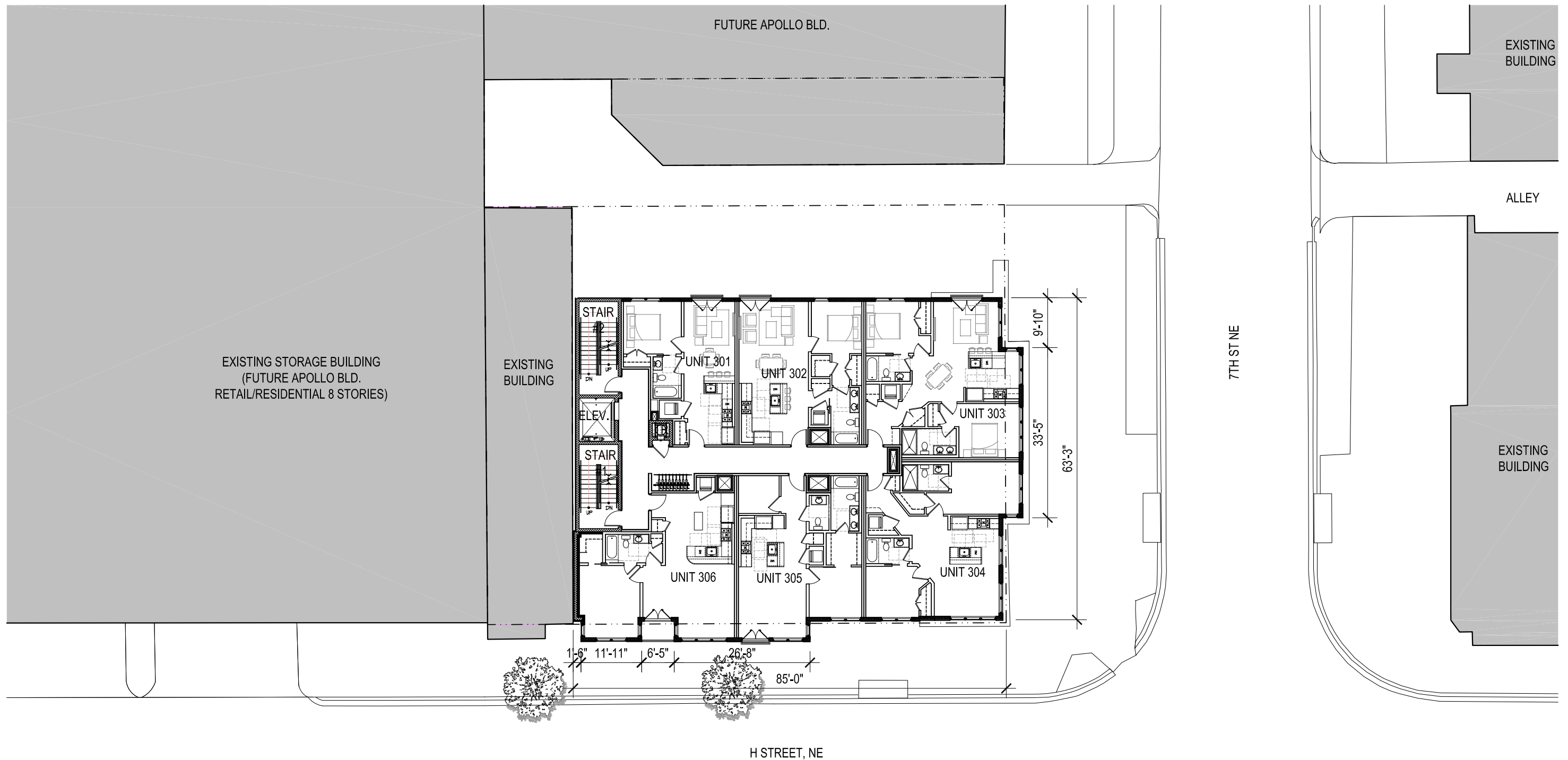
646 - 654 H STREET, NE

646-654 H Street, NE
Washington, DC
Square: 858 Lot No: 65 Zone: HS-H / C-2-B

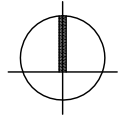
PGN ARCHITECTS
PGN Architects, PLLC
210 7th Street SE - Suite 201
Washington, DC 20003
(P) 202-822-5995

ROCK CREEK PROPERTY GROUP
Rock Creek Property Group, LLC
1155 Connecticut Ave., NW Suite 700
Washington, DC 20036
(P) 202-835-1200

CORNERSTONE DEVELOPMENT GROUP
Cornerstone Development Group
3701 Pender Drive, Suite 200A
Falls Church, VA 22030
(P) 703-503-5555



1 THIRD FLOOR PLAN
SCALE: 1" = 20'-0"



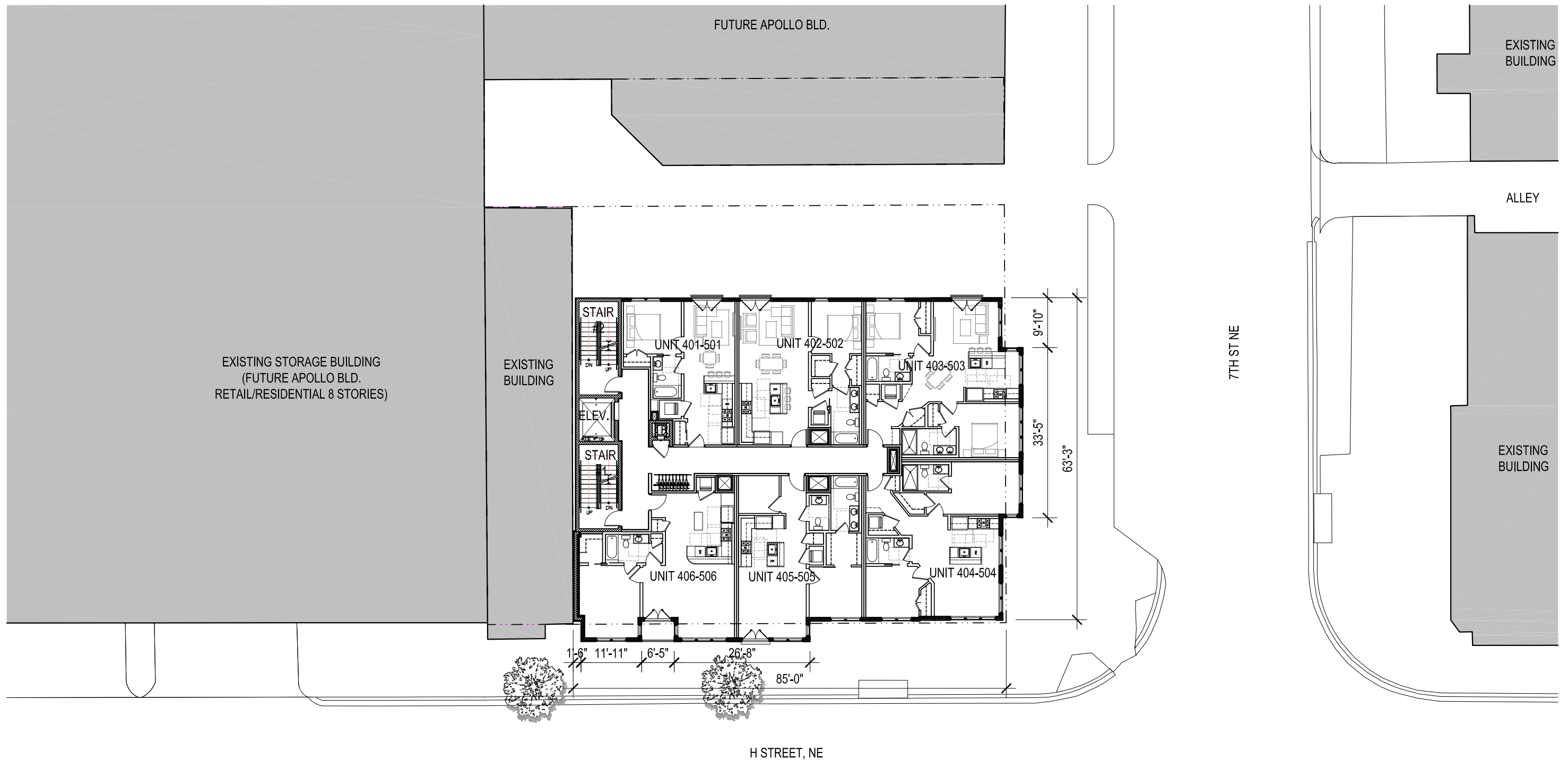
646 - 654 H STREET, NE

646-654 H Street, NE
Washington, DC
Square: 858 Lot No: 65 Zone: HS-H / C-2-B

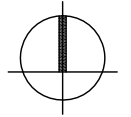
PGN ARCHITECTS
PGN Architects, PLLC
210 7th Street SE - Suite 201
Washington, DC 20003
(P) 202-822-5995

ROCK CREEK PROPERTY GROUP
Rock Creek Property Group, LLC
1155 Connecticut Ave., NW Suite 700
Washington, DC 20036
(P) 202-835-1200

CORNERSTONE DEVELOPMENT GROUP
Cornerstone Development Group
3701 Pender Drive, Suite 200A
Falls Church, VA 22030
(P) 703-503-5555



1 TYPICAL FLOOR PLAN - 4-5 FLOOR
SCALE: 1" = 20'-0"



646 - 654 H STREET, NE

646-654 H Street, NE
Washington, DC
Square: 858 Lot No: 65 Zone: HS-H / C-2-B

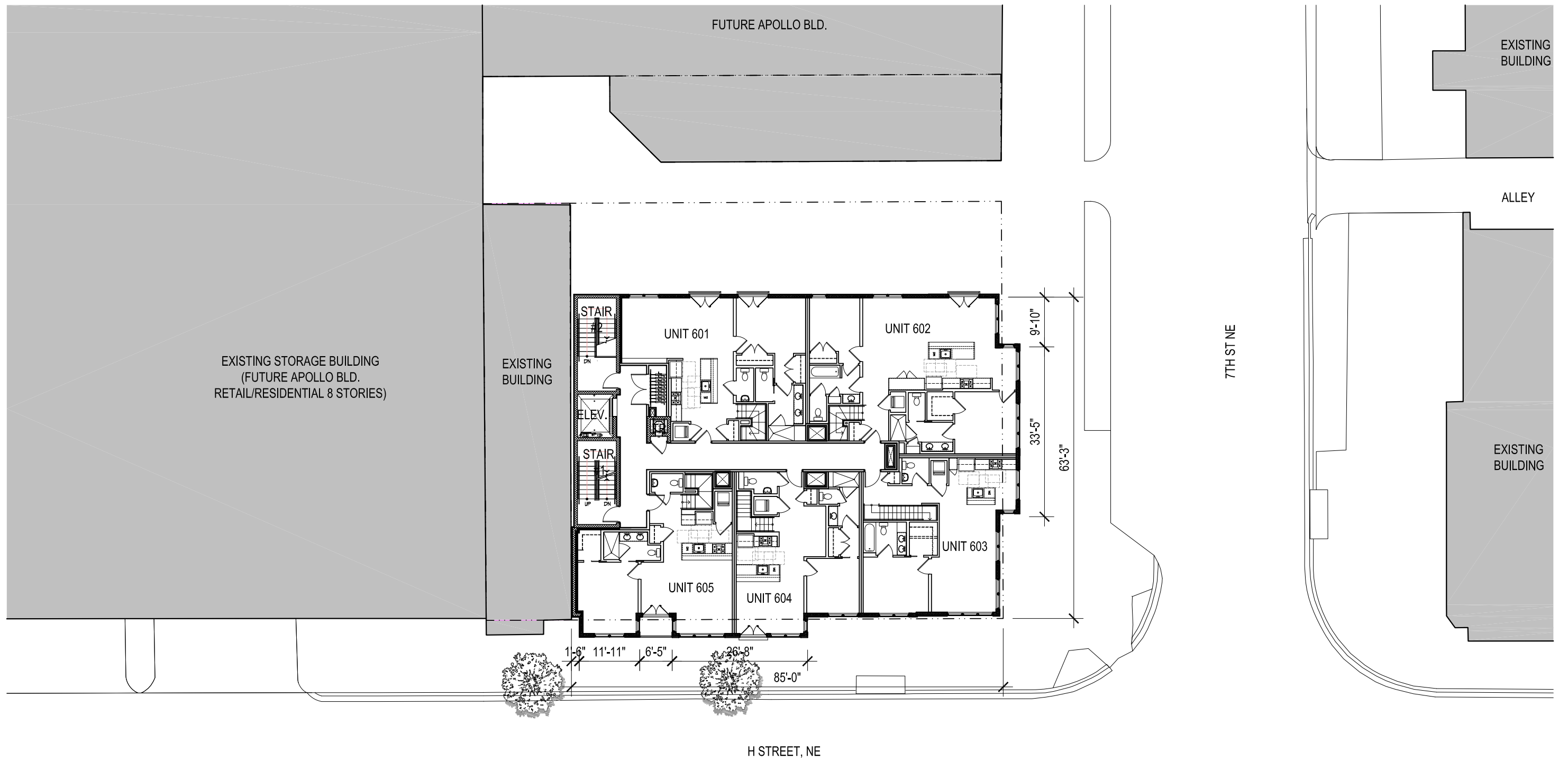
PGN ARCHITECTS
PGN Architects, PLLC
210 7th Street SE - Suite 201
Washington, DC 20003
(P) 202-822-5995

ROCK CREEK PROPERTY GROUP
Rock Creek Property Group, LLC
1155 Connecticut Ave., NW Suite 700
Washington, DC 20036
(P) 202-835-1200

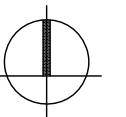
CORNERSTONE DEVELOPMENT GROUP
Cornerstone Development Group
3701 Pender Drive, Suite 200A
Falls Church, VA 22030
(P) 703-503-5555

5/24/2016 2:14:55 PM

\\14-0000_646-654_h st ne\drawings\sheet\646-654_015 - sixth floor plan.dwg



1 SIXTH FLOOR PLAN
SCALE: 1" = 20'-0"



646 - 654 H STREET, NE

SIXTH FLOOR PLAN | A1.5

646-654 H Street, NE
Washington, DC
Square: 858 Lot No: 65 Zone: HS-H / C-2-B



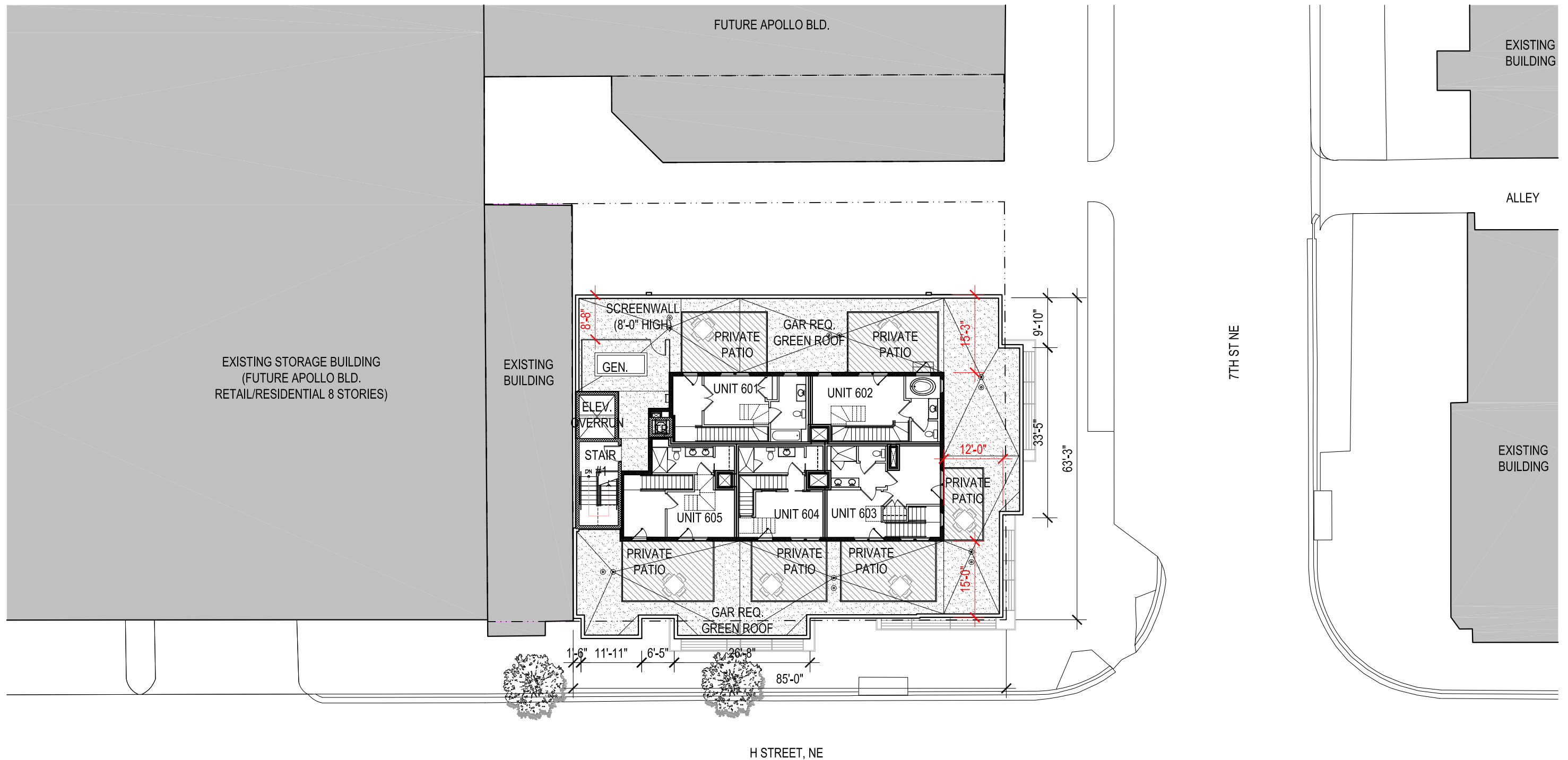
PGN Architects, PLLC
210 7th Street SE - Suite 201
Washington, DC 20003
(P) 202-822-5995



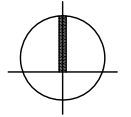
Rock Creek Property Group, LLC
1155 Connecticut Ave., NW Suite 700
Washington, DC 20036
(P) 202-835-1200



Cornerstone Development Group
3701 Pender Drive, Suite 200A
Falls Church, VA 22030
(P) 703-503-5555



1 PENTHOUSE FLOOR PLAN
SCALE: 1" = 20'-0"



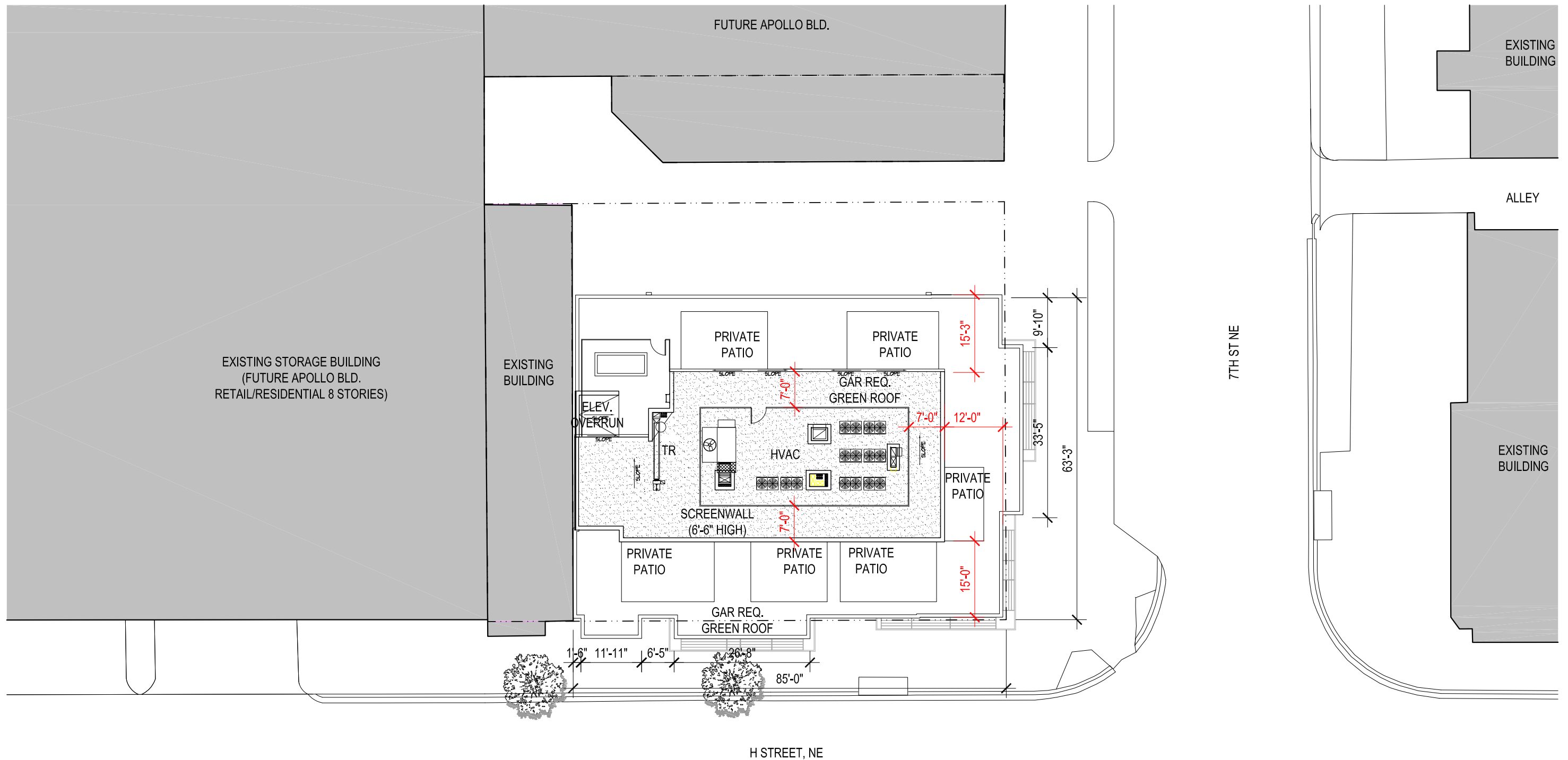
646 - 654 H STREET, NE

646-654 H Street, NE
Washington, DC
Square: 858 Lot No: 65 Zone: HS-H / C-2-B

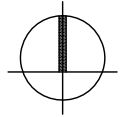
PGN ARCHITECTS
PGN Architects, PLLC
210 7th Street SE - Suite 201
Washington, DC 20003
(P) 202-822-5995

ROCK CREEK PROPERTY GROUP
Rock Creek Property Group, LLC
1155 Connecticut Ave., NW Suite 700
Washington, DC 20036
(P) 202-835-1200

CORNERSTONE DEVELOPMENT GROUP
Cornerstone Development Group
3701 Pender Drive, Suite 200A
Fairfax, VA 22030
(P) 703-503-5555



1 ROOF FLOOR PLAN
SCALE: 1" = 20'-0"



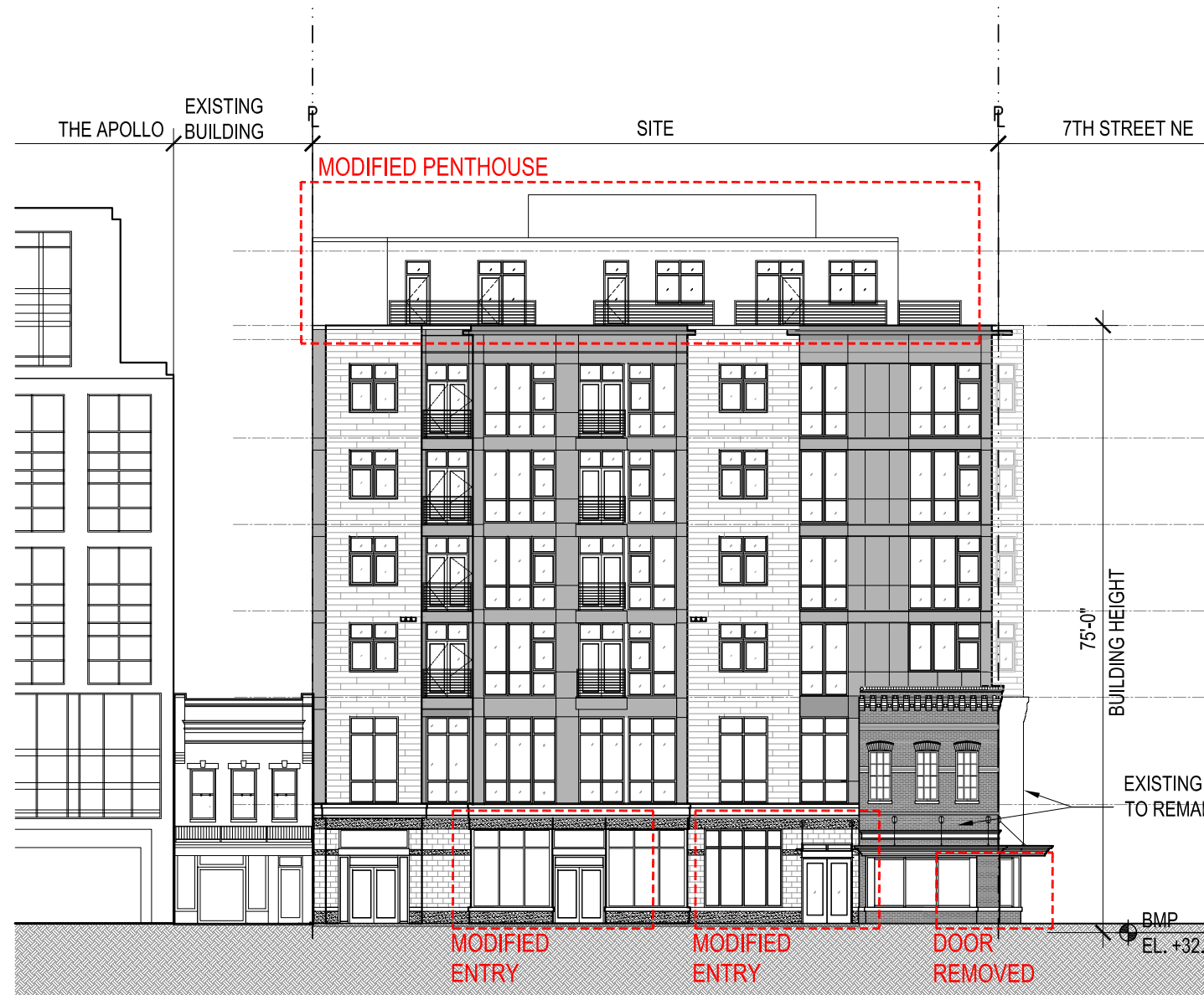
646 - 654 H STREET, NE

646-654 H Street, NE
Washington, DC
Square: 858 Lot No: 65 Zone: HS-H / C-2-B

PGN ARCHITECTS
PGN Architects, PLLC
210 7th Street SE - Suite 201
Washington, DC 20003
(P) 202-822-5995

Rock Creek PROPERTY GROUP
Rock Creek Property Group, LLC
1155 Connecticut Ave., NW Suite 700
Washington, DC 20036
(P) 202-835-1200

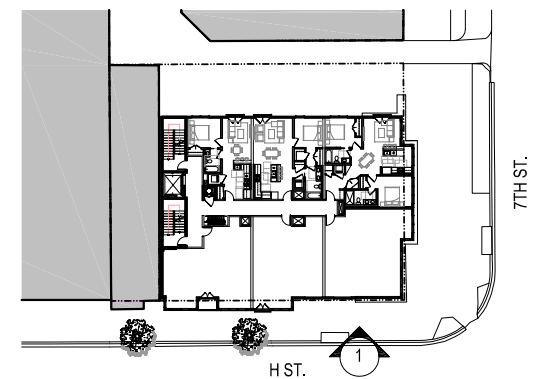
CORNERSTONE DEVELOPMENT GROUP
Cornerstone Development Group
3701 Pender Drive, Suite 200A
Fairfax, VA 22030
(P) 703-503-5555



1 NEW SOUTH (H STREET) ELEVATION
SCALE: 1"=20'-0"



2 PREVIOUS SOUTH (H STREET) ELEVATION
SCALE: 1"=20'-0"



646 - 654 H STREET, NE

646-654 H Street, NE
Washington, DC
Square: 858 Lot No: 65 Zone: HS-H / C-2-B

PGN
ARCHITECTS

PGN Architects, PLLC
210 7th Street SE - Suite 201
Washington, DC 20003
(P) 202-822-5995

Rock Creek
PROPERTY GROUP

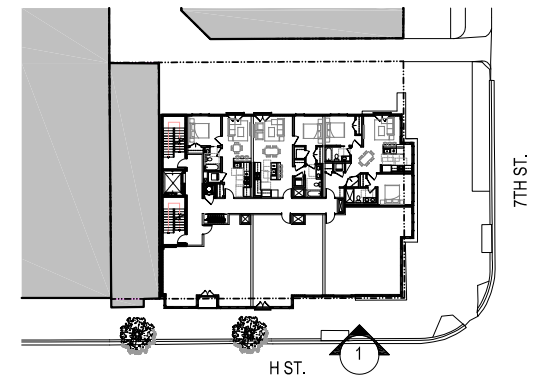
Rock Creek Property Group, LLC
1155 Connecticut Ave., NW Suite 700
Washington, DC 20036
(P) 202-835-1200

CORNERSTONE
DEVELOPMENT GROUP

Cornerstone Development Group
3701 Pender Drive, Suite 200A
Falls Church, VA 22030
(P) 703-503-5555



1 PREVIOUS SOUTH (H STREET) ELEVATION
SCALE: 1"=20'-0"



646 - 654 H STREET, NE

646-654 H Street, NE
Washington, DC
Square: 858 Lot No: 65 Zone: HS-H / C-2-B

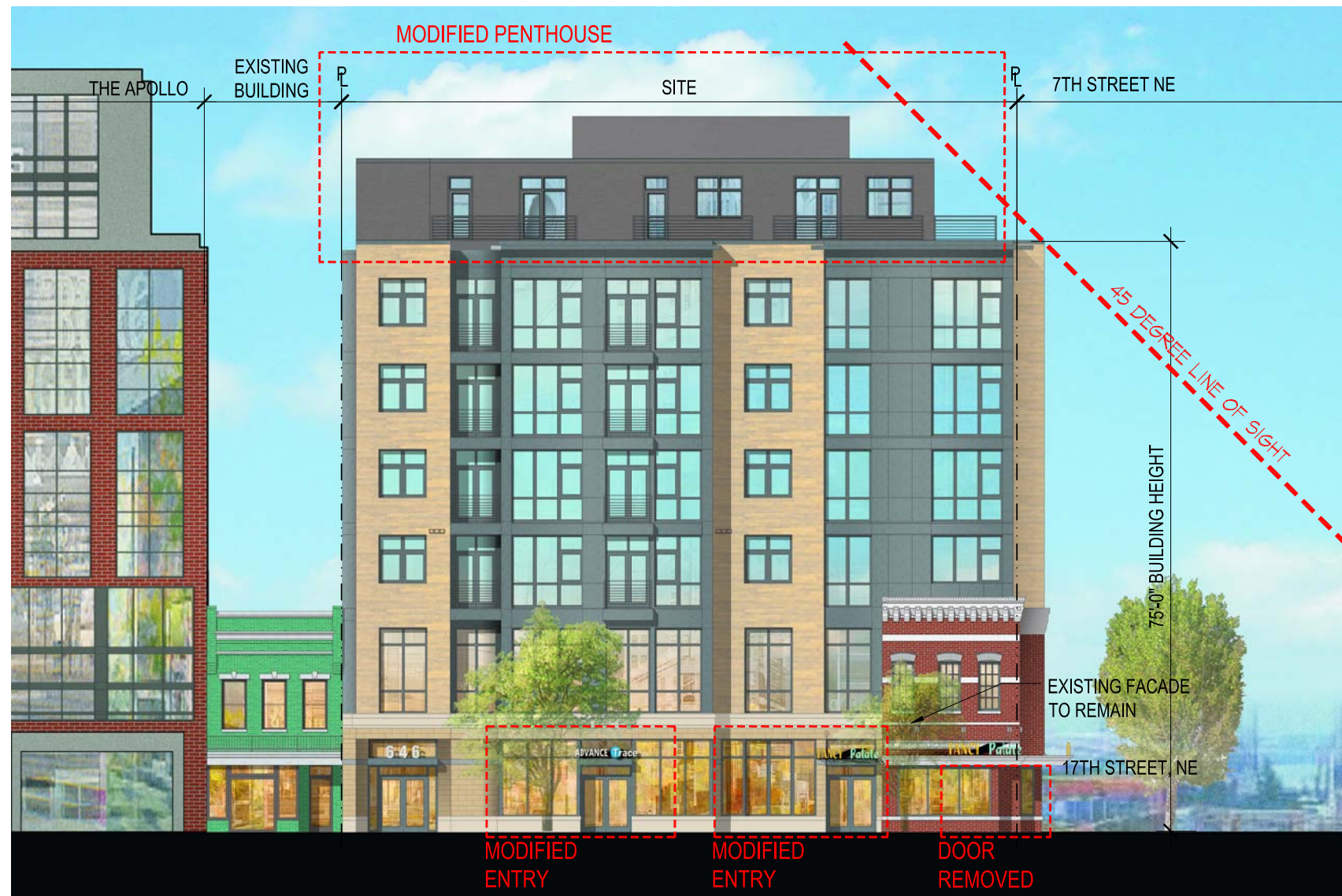
PGN ARCHITECTS
PGN Architects, PLLC
210 7th Street SE - Suite 201
Washington, DC 20003
(P) 202-822-5995

ROCK CREEK PROPERTY GROUP
Rock Creek Property Group, LLC
1155 Connecticut Ave., NW Suite 700
Washington, DC 20036
(P) 202-835-1200

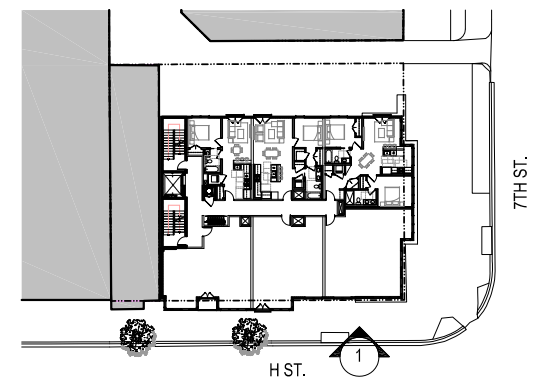
CORNERSTONE DEVELOPMENT GROUP
Cornerstone Development Group
3701 Pender Drive, Suite 200A
Fairfax, VA 22030
(P) 703-503-5555

PREVIOUS SOUTH ELEVATION | A2.2A

05/26/16



1 UPDATED SOUTH (H STREET) ELEVATION
SCALE: 1"=20'-0"



646 - 654 H STREET, NE

646-654 H Street, NE
Washington, DC
Square: 858 Lot No: 65 Zone: HS-H / C-2-B



PGN Architects, PLLC
210 7th Street SE - Suite 201
Washington, DC 20003
(P) 202-822-5995



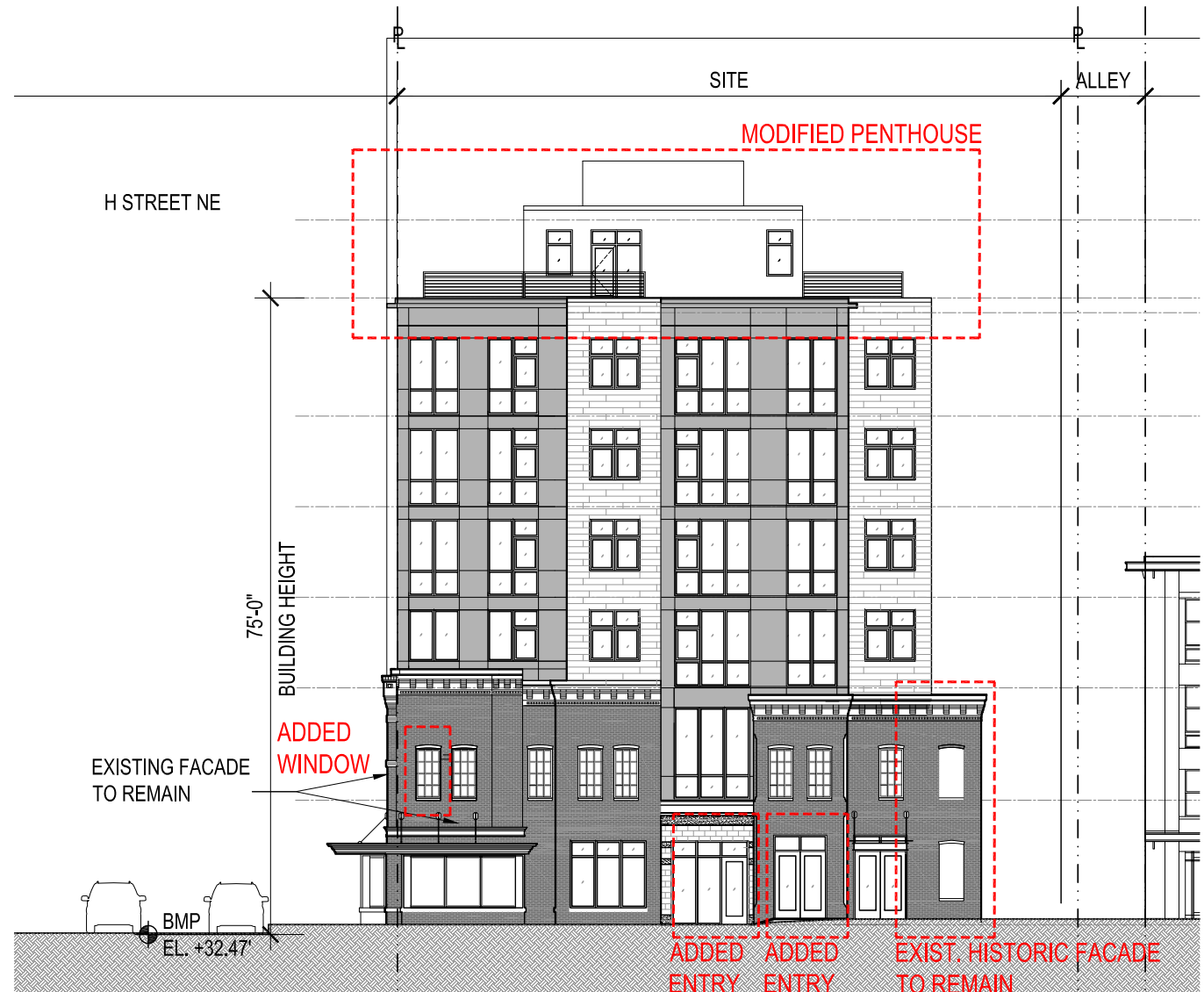
Rock Creek Property Group, LLC
1155 Connecticut Ave., NW Suite 700
Washington, DC 20036
(P) 202-835-1200



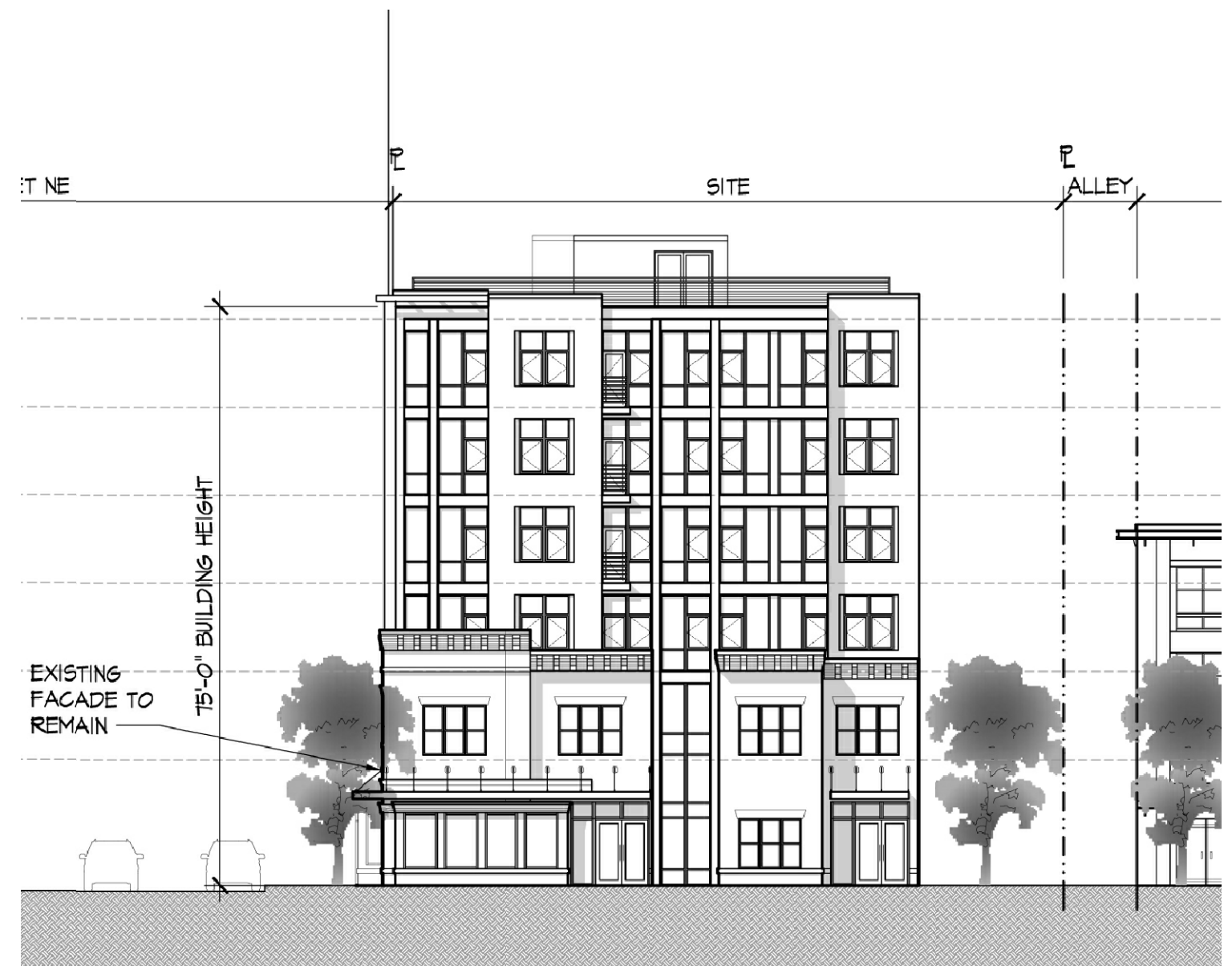
Cornerstone Development Group
3701 Pender Drive, Suite 200A
Falls Church, VA 22030
(P) 703-503-5555

UPDATED SOUTH ELEVATION | A2.2B

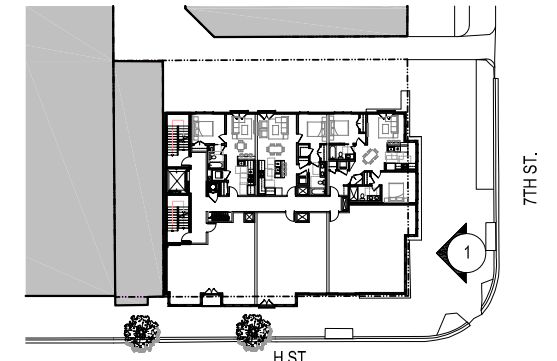
05/26/16



1 NEW EAST (7TH STREET) ELEVATION
SCALE: 1"=20'-0"



2 PREVIOUS EAST (7TH STREET) ELEVATION
SCALE: 1"=20'-0"



646 - 654 H STREET, NE

646-654 H Street, NE
Washington, DC
Square: 858 Lot No: 65 Zone: HS-H / C-2-B

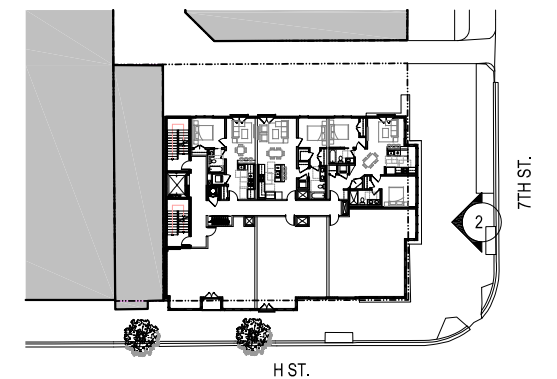
PGN ARCHITECTS
 PGN Architects, PLLC
 210 7th Street SE - Suite 201
 Washington, DC 20003
 (P) 202-822-5995

ROCK CREEK PROPERTY GROUP
 Rock Creek Property Group, LLC
 1155 Connecticut Ave., NW Suite 700
 Washington, DC 20036
 (P) 202-835-1200

CORNERSTONE DEVELOPMENT GROUP
 Cornerstone Development Group
 3701 Pender Drive, Suite 200A
 Fairfax, VA 22030
 (P) 703-503-5555



1 PREVIOUS EAST (7TH STREET) ELEVATION
SCALE: 1"=20'-0"



646 - 654 H STREET, NE

646-654 H Street, NE
Washington, DC
Square: 858 Lot No: 65 Zone: HS-H / C-2-B

PGN ARCHITECTS
PGN Architects, PLLC
210 7th Street SE - Suite 201
Washington, DC 20003
(P) 202-822-5995

ROCK CREEK PROPERTY GROUP
Rock Creek Property Group, LLC
1155 Connecticut Ave., NW Suite 700
Washington, DC 20036
(P) 202-835-1200

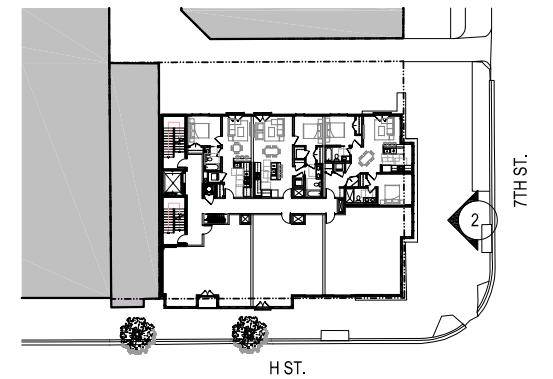
CORNERSTONE DEVELOPMENT GROUP
Cornerstone Development Group
3701 Pender Drive, Suite 200A
Fairfax, VA 22030
(P) 703-503-5555

PREVIOUS RENDERED EAST ELEVATION | A2.4A

05/26/16



1 UPDATED EAST (7TH STREET) ELEVATION
SCALE: 1"=20'-0"



646 - 654 H STREET, NE

646-654 H Street, NE
Washington, DC
Square: 858 Lot No: 65 Zone: HS-H / C-2-B

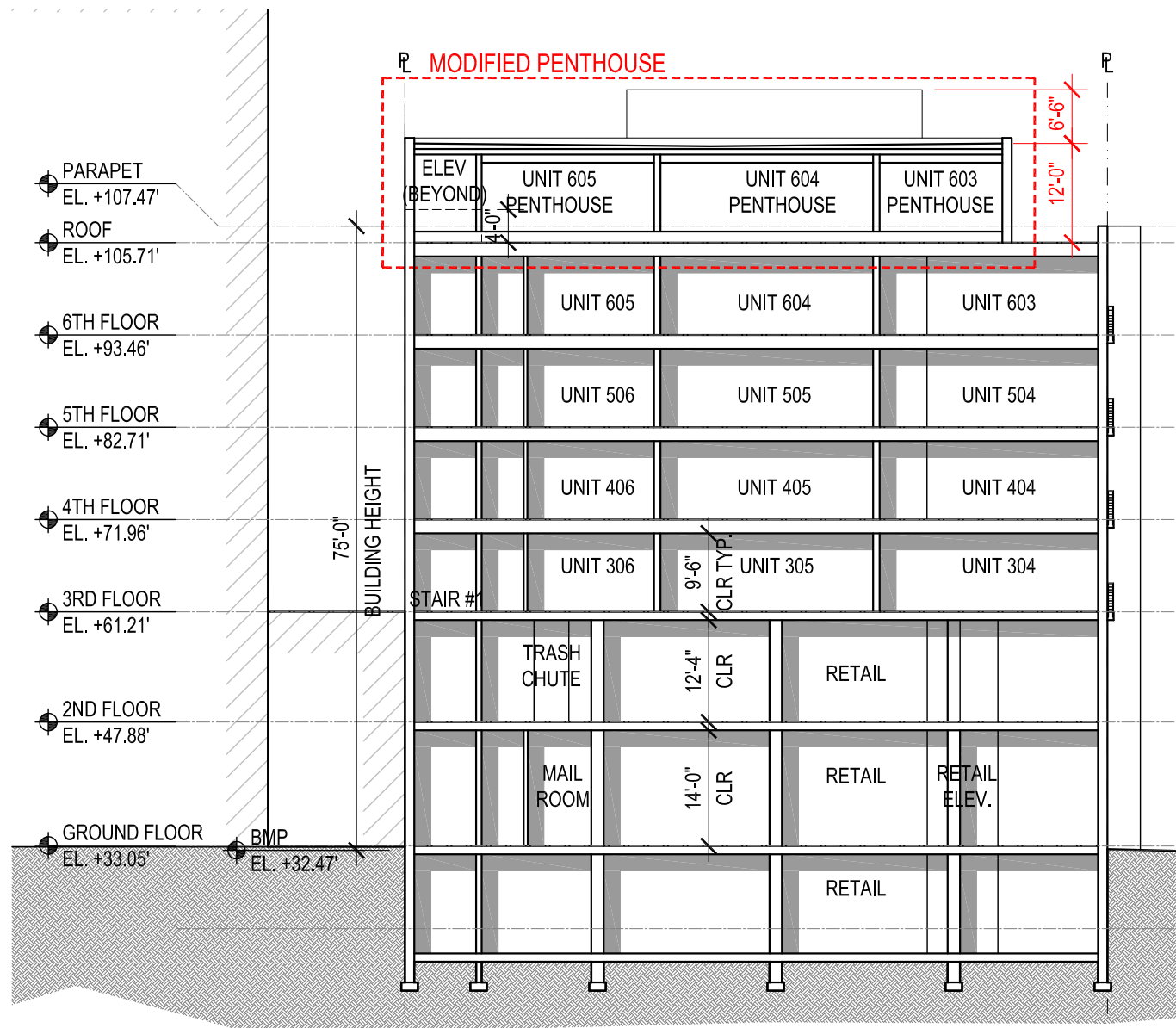
PGN ARCHITECTS
PGN Architects, PLLC
210 7th Street SE - Suite 201
Washington, DC 20003
(P) 202-822-5995

ROCK CREEK PROPERTY GROUP
Rock Creek Property Group, LLC
1155 Connecticut Ave., NW Suite 700
Washington, DC 20036
(P) 202-835-1200

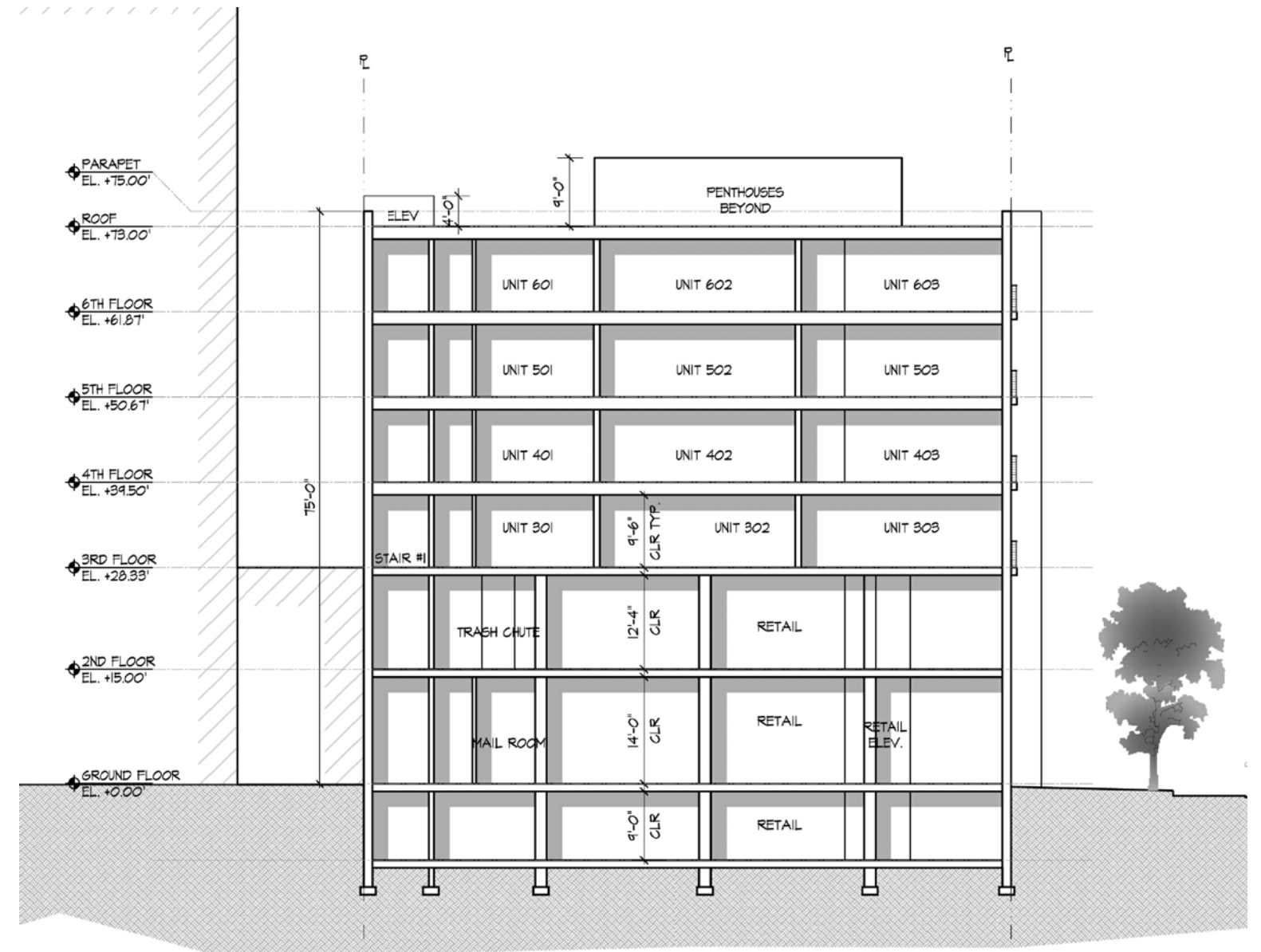
CORNERSTONE DEVELOPMENT GROUP
Cornerstone Development Group
3701 Pender Drive, Suite 200A
Fairfax, VA 22030
(P) 703-503-5555

UPDATED RENDERED EAST ELEVATION | A2.4B

05/26/16



1 NEW BUILDING SECTION (EAST TO WEST)
SCALE: 1"=20'-0"



2 PREVIOUS BUILDING SECTION (EAST TO WEST)
SCALE: 1"=20'-0"



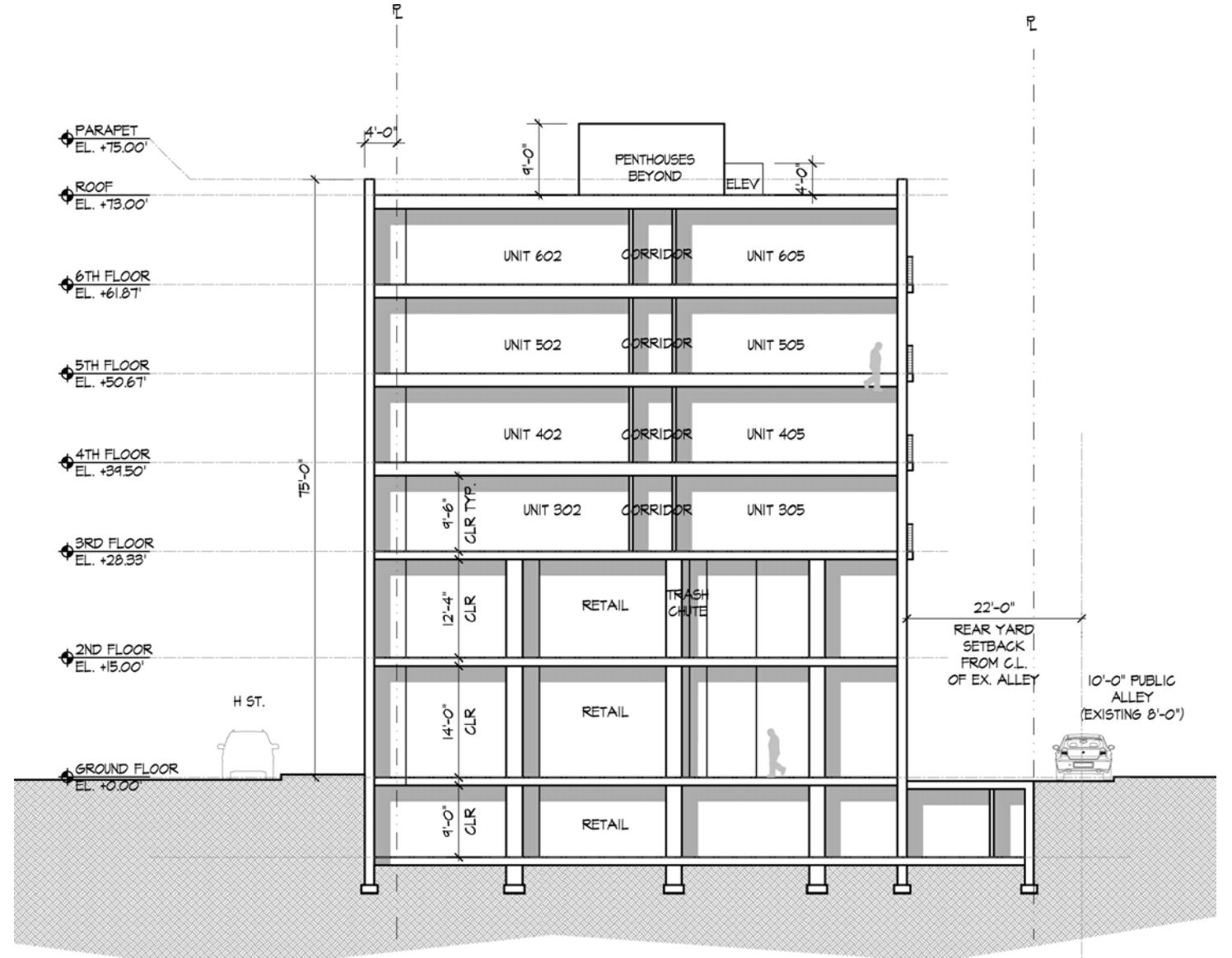
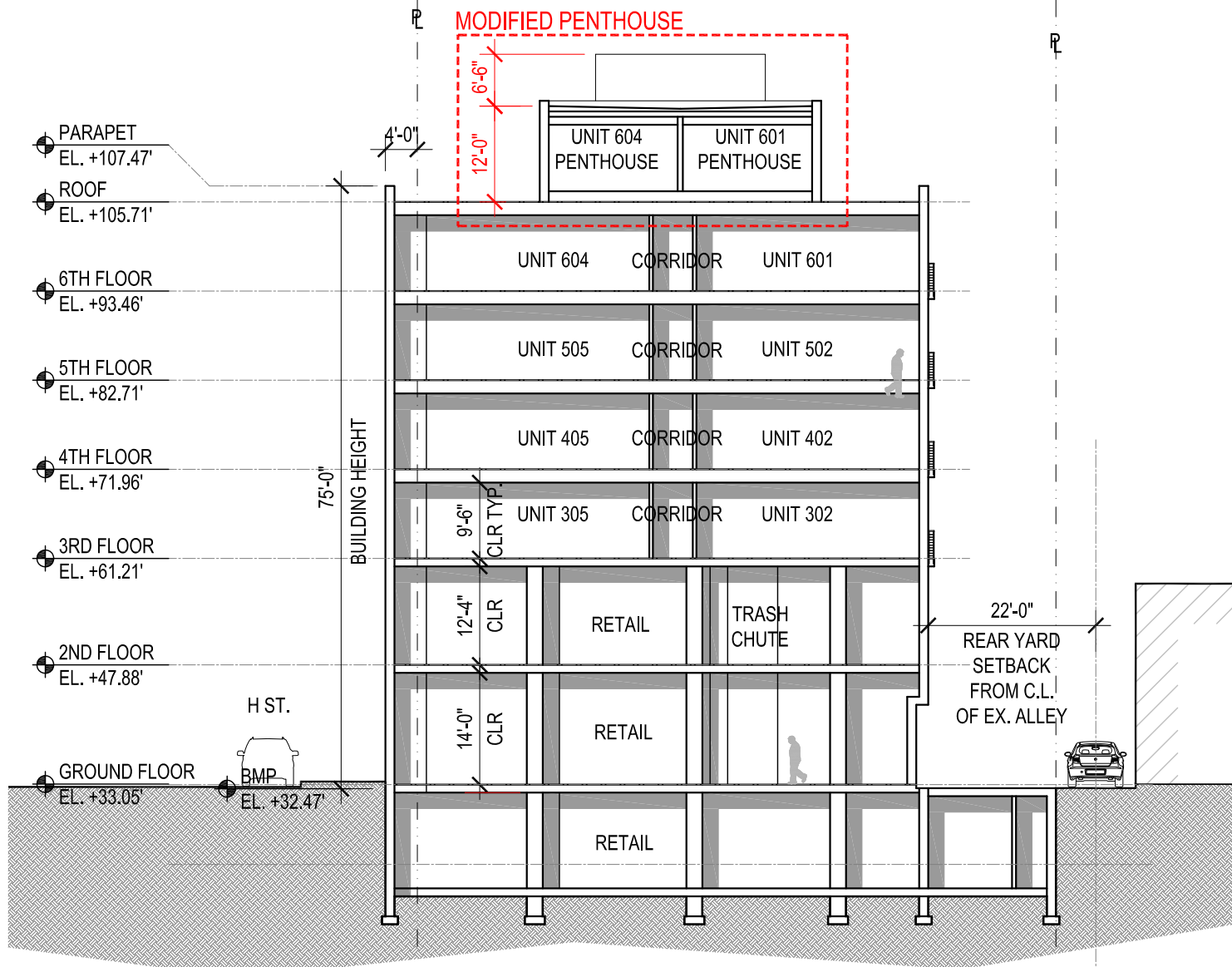
646 - 654 H STREET, NE

646-654 H Street, NE
Washington, DC
Square: 858 Lot No: 65 Zone: HS-H / C-2-B

PGN ARCHITECTS
PGN Architects, PLLC
210 7th Street SE - Suite 201
Washington, DC 20003
(P) 202-822-5995

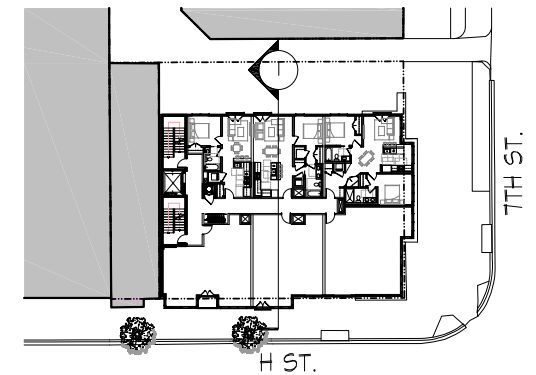
ROCK CREEK PROPERTY GROUP
Rock Creek Property Group, LLC
1155 Connecticut Ave., NW Suite 700
Washington, DC 20036
(P) 202-835-1200

CORNERSTONE DEVELOPMENT GROUP
Cornerstone Development Group
3701 Pender Drive, Suite 200A
Falls Church, VA 22030
(P) 703-503-5555



1 NEW BUILDING SECTION (NORTH TO SOUTH)
SCALE: 1"=20'-0"

2 PREVIOUS SECTION (NORTH TO SOUTH)
SCALE: 1"=20'-0"



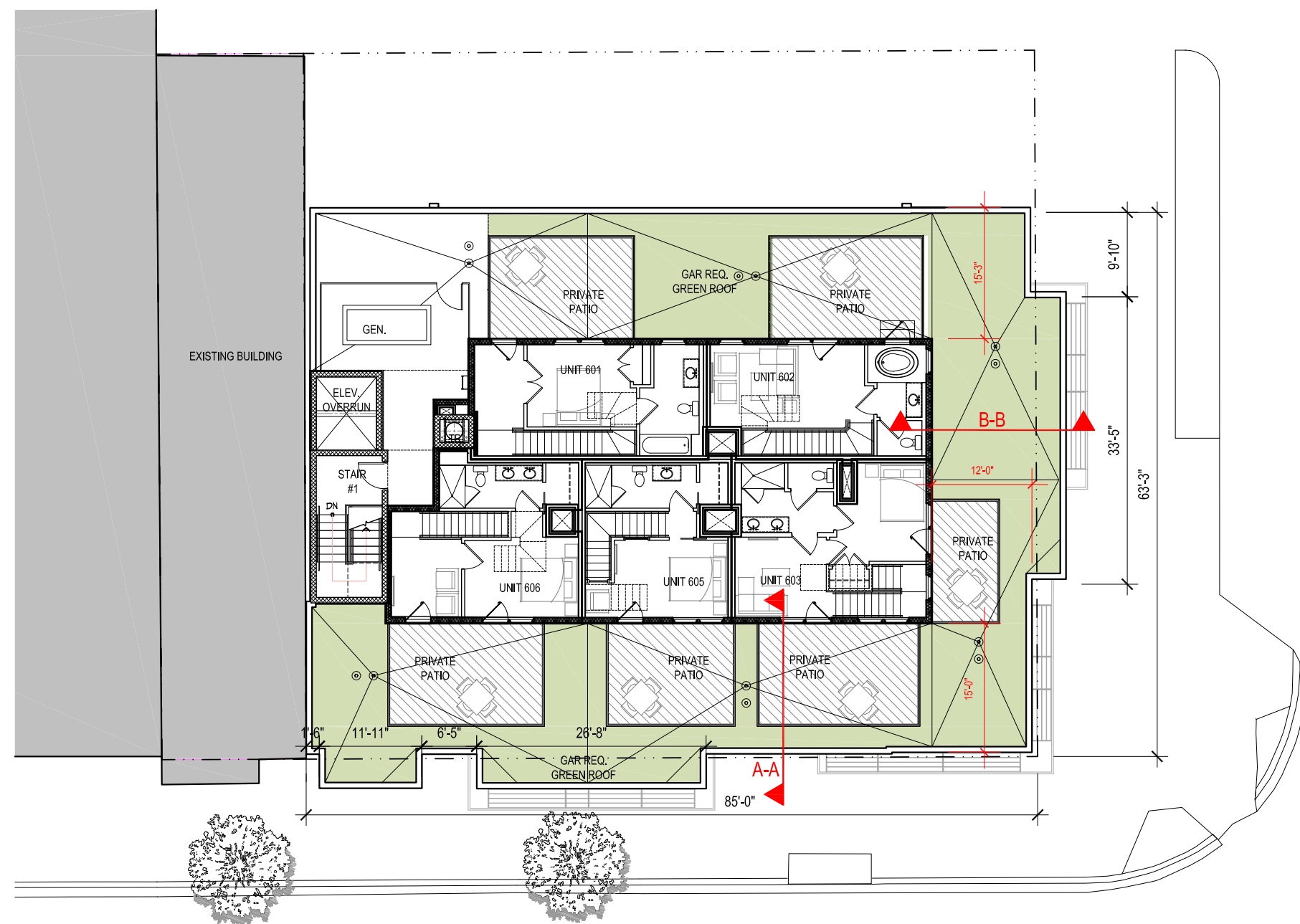
646 - 654 H STREET, NE

646-654 H Street, NE
Washington, DC
Square: 858 Lot No: 65 Zone: HS-H / C-2-B

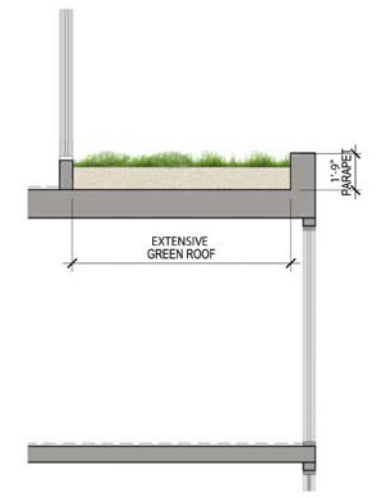
PGN ARCHITECTS
PGN Architects, PLLC
210 7th Street SE - Suite 201
Washington, DC 20003
(P) 202-822-5995

Rock Creek PROPERTY GROUP
Rock Creek Property Group, LLC
1155 Connecticut Ave., NW Suite 700
Washington, DC 20036
(P) 202-835-1200

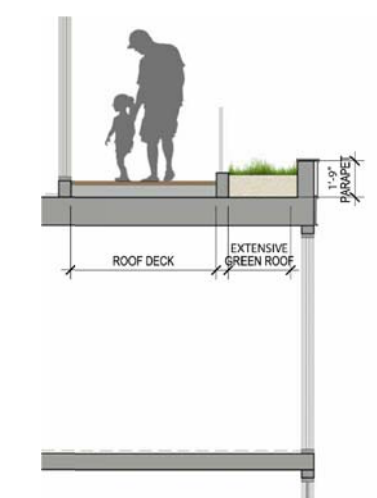
CORNERSTONE DEVELOPMENT GROUP
Cornerstone Development Group
3701 Pender Drive, Suite 200A
Falls Church, VA 22030
(P) 703-503-5555



1 ENLARGED PENTHOUSE PLAN
SCALE: 1"=10'-0"



SECTION B-B



SECTION A-A

GREEN ROOF FEATURES:

1. EXTENSIVE GREEN ROOF
2. PERMEABLE PAVERS

2 GREEN ROOF DIAGRAMS
SCALE: N.T.S.

646 - 654 H STREET, NE

646-654 H Street, NE
Washington, DC
Square: 858 Lot No: 65 Zone: HS-H / C-2-B

PGN ARCHITECTS
PGN Architects, PLLC
210 7th Street SE - Suite 201
Washington, DC 20003
(P) 202-822-5995

ROCK CREEK PROPERTY GROUP
Rock Creek Property Group, LLC
1155 Connecticut Ave., NW Suite 700
Washington, DC 20036
(P) 202-835-1200

CORNERSTONE DEVELOPMENT GROUP
Cornerstone Development Group
3701 Pender Drive, Suite 200A
Fairfax, VA 22030
(P) 703-503-5555