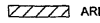


PURSUANT TO D.C. LAW 17-226, EFFECTIVE SEPTEMBER 11, 2008  
THE ALLEYS SHOWN THUS:  ARE CLOSED AND  
TITLE VESTS AS SHOWN UPON RECORDATION OF THIS PLAT.

# PUBLIC ALLEYS CLOSED SQUARES 564, 566 & 568

OFFICE OF THE SURVEYOR, D.C.

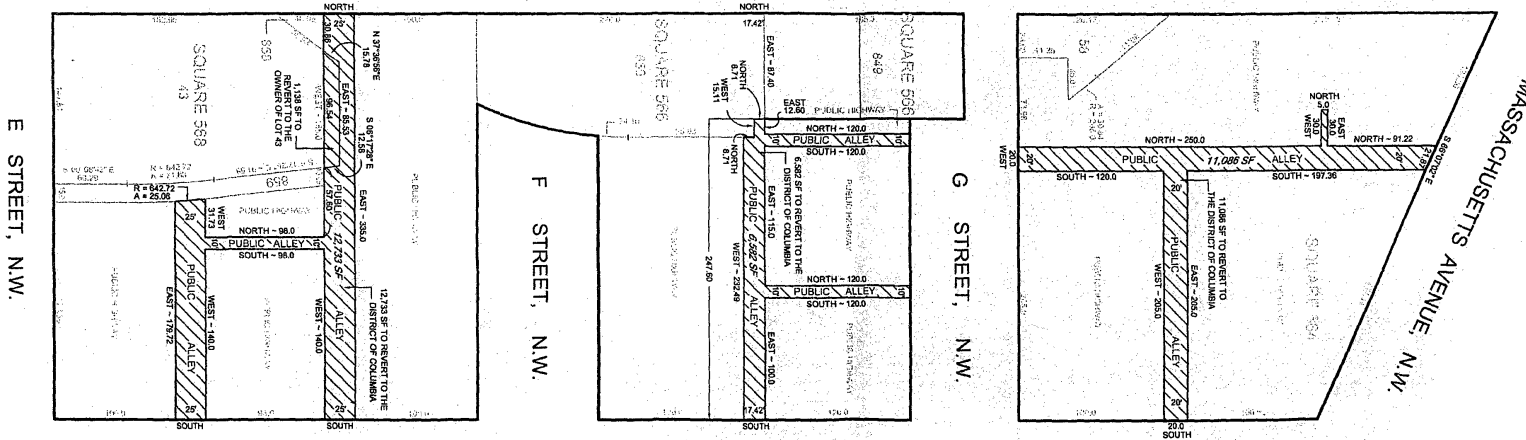
*December 17, 2008*

I CERTIFY THAT THIS PLAT IS CORRECT AND IS RECORDED.

*Richard F. Dwyer*  
SURVEYOR, D.C.



3rd STREET, N.W.



2nd STREET, N.W.

**SURVEYOR'S OFFICE, D.C.**

Made for: DMPED

Drawn by: L.E.S. Checked by: BAM AD

Record and computations by: F. SLEEM

Recorded at: 3:25 PM ON DECEMBER 17, 2008

Recorded in Book 203 Page 127 S.O. 09996

Scale: 1 inch = 60 feet File No. 07-00122