

Block E



West Elevation - 7th Street NE - Presented at 10/05/09 Public Hearing



Revised West Elevation - 7th Street NE - 10/26/09

Note - Storefront retail signage designs are illustrative and will vary based on actual retailer designs. Utility poles and lines not shown for graphic purposes. Although applicant is not completing the undergrounding of utilities, applicant is committed to coordinating with and allowing relevant utility companies and District government agencies to complete undergrounding.

Source: Torti Gallas and Partners, Inc. | 1000 Spring Street, 4th Floor, Silver Spring, Maryland 20906 | 301.444.4400

Exhibit A - Block E - Elevations

ABDO DEVELOPMENT, LLC
TORTI GALLAS AND PARTNERS, INC. | MAURICE WALTERS ARCHITECT, PC



October 25, 2009

CUA SOUTH CAMPUS REDEVELOPMENT

Block E



South Elevation - Lawrence Street NE - Presented at 10/05/09 Public Hearing



Revised South Elevation - Lawrence Street NE - 10/26/09

Note - Storefront retail signage designs are illustrative and will vary based on actual retailer designs. Utility poles and lines not shown for graphic purposes. Although applicant is not completing the undergrounding of utilities, applicant is committed to coordinating with and allowing relevant utility companies and District government agencies to complete undergrounding.

Drawn: Torti Gallas and Partners, Inc. | 1200 Spring Street, 4th Floor, Silver Spring, Maryland 20901-4001

Exhibit A - Block E - Elevations



October 26, 2009

Block E

PREVIOUS



East Elevation - 8th Street NE - Presented at 10/05/09 Public Hearing

CURRENT



Revised East Elevation - 8th Street NE - 10/26/09

Note - Storefront retail signage designs are illustrative and will vary based on actual retailer designs. Utility poles and lines not shown for graphic purposes. Although applicant is not completing the undergrounding of utilities, applicant is committed to coordinating with and allowing relevant utility companies and District government agencies to complete undergrounding.

(Source: Torti Gallas and Partners, Inc. | 1000 Spring Street, 4th Floor, Silver Spring, Maryland | 301-584-4800)

Exhibit A - Block E - Elevations

ABDO DEVELOPMENT, LLC
TORTI GALLAS AND PARTNERS, INC. | MAURICE WALTERS ARCHITECT, PC



October 26, 2009

Block E

PREVIOUS



Section A-A (East-West) - Presented at 10/05/09 Public Hearing

CURRENT



Revised Section A-A (East-West) - 10/26/09



0 10 20 40

October 26, 2009

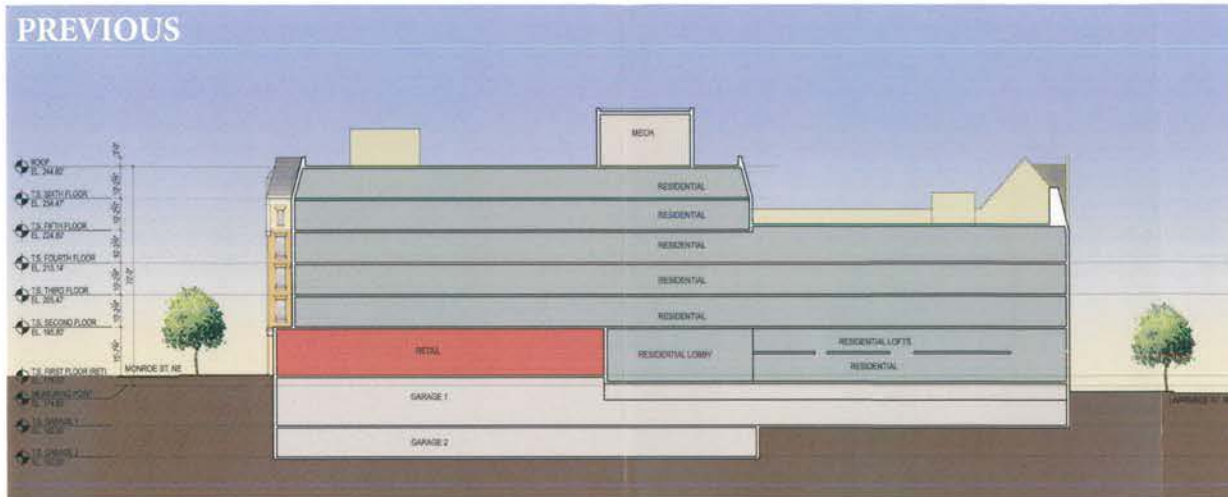
© 2009 Torti Gallas and Partners, Inc. 1 (100 Spring Street, 4th Floor, Silver Spring, Maryland) www.torti-gallas.com

Exhibit A - Block E - Sections

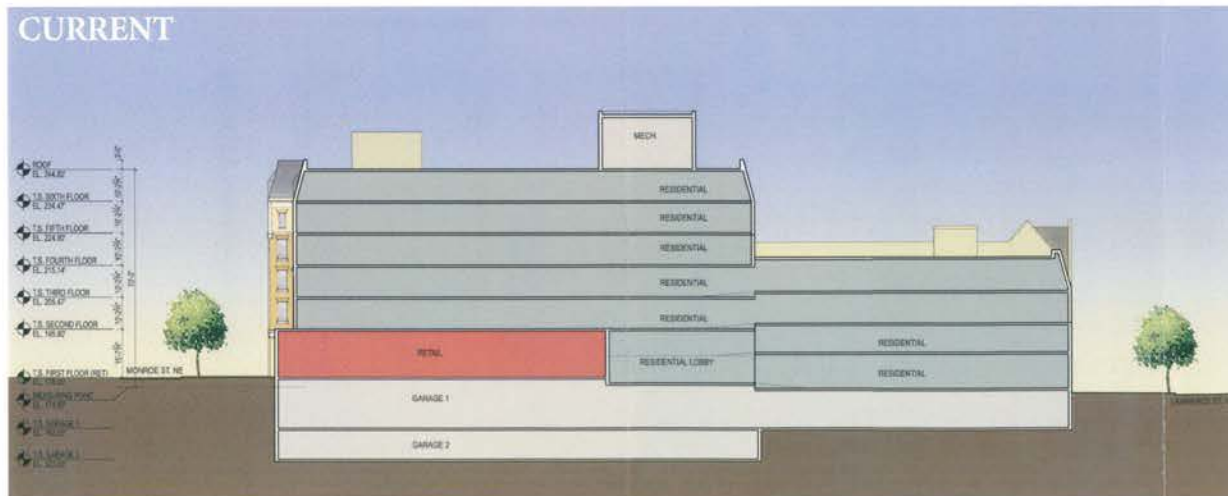
ABDO DEVELOPMENT, LLC
TORTI GALLAS AND PARTNERS, INC. | MAURICE WALTERS ARCHITECT, PC

CUA SOUTH CAMPUS REDEVELOPMENT

Block E



Section B-B (North-South) - Presented at 10/05/09 Public Hearing



Revised Section B-B (North-South) - 10/26/09



© 2009 Torti Gallas and Partners, Inc. | 1000 Spring Street, 4th Floor, Silver Spring, Maryland | 301.581.4100

Exhibit A - Block E - Sections

ABDO DEVELOPMENT, LLC
TORTI GALLAS AND PARTNERS, INC. | MAURICE WALTERS ARCHITECT, PC



Images: Torti Gallas and Partners, Inc. | 1000 Spring Street, 4th Floor, Silver Spring, Maryland 20910-5000

Exhibit A - Block E - Side Yard Setback on Lawrence Street

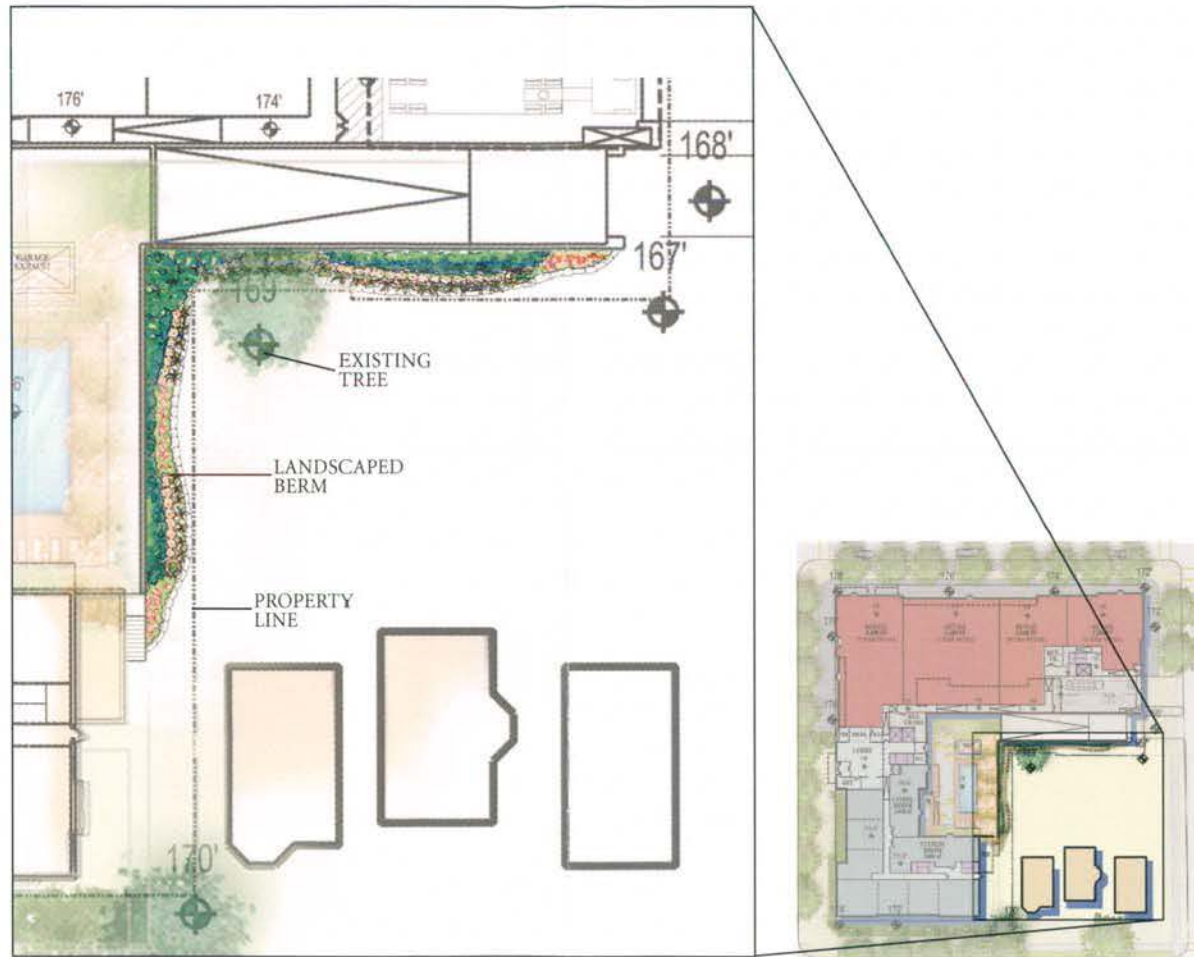
ABDO DEVELOPMENT, LLC
TORTI GALLAS AND PARTNERS, INC. | MAURICE WALTERS ARCHITECT, PC



©2009 Torti Gallas and Partners, Inc. | 1100 Spring Street, 4th floor, Silver Spring, Maryland 20910-4400

Exhibit A - View looking Northwest from the intersection of 8th and Lawrence Streets, NE

October 26, 2009



From Tiers Gallat and Partners, Inc. | 1000 Spring Street, 4th Floor, Silver Spring, Maryland | 301.584.4000

Exhibit A - Block E - Additional Landscaped Berm along East-West Wall

September 3, 2008

ABDO DEVELOPMENT, LLC
 OEHME, VAN SWEDEN AND ASSOCIATES - MACRIS, HENDRICKS AND GLASCOCK, PA