

# WASHINGTON D.C. MARRIOTT MARQUIS



## SITE MAP



## DRAWING INDEX

PUD 370 SUBMISSION INDEX		
SHEET NO.	DRAWING NAME	SHEET ISSUE DATE
A-001	COVER SHEET	12.22.2008
A-004	ZONING TABULATION / SECTION	12.22.2008
A-005	LEED ELEMENTS - SILVER	12.22.2008
A-219	FLOOR PLAN - LEVEL 15 MECHANICAL PENTHOUSE (205'-8")	12.22.2008
A-220	ROOF PLAN (224'-4")	12.22.2008
A-301	BUILDING ELEVATIONS - MASS AVE	12.22.2008
A-302	BUILDING ELEVATIONS - 9TH STREET	12.22.2008
A-303	BUILDING ELEVATION - L STREET	12.22.2008
A-304	BUILDING ELEVATION - 10TH STREET	12.22.2008
A-350	MATERIAL BOARD	11.03.2008
A-351	ENLARGED BLDG SKIN COMPONENT - MASS AVE 1	12.22.2008
A-352	ENLARGED BLDG SKIN COMPONENT - MASS AVE 2	12.22.2008
A-353	ENLARGED BLDG SKIN COMPONENT - MASS AVE 3	12.22.2008
A-354	ENLARGED BLDG SKIN COMPONENT - MASS AVE 4	12.22.2008
A-355	ENLARGED BLDG SKIN COMPONENT - MASS AVE 5	12.22.2008
A-356	ENLARGED BLDG SKIN COMPONENT - 9TH STREET 1	12.22.2008
A-357	ENLARGED BLDG SKIN COMPONENT - 9TH STREET 2	12.22.2008
A-358	ENLARGED BLDG SKIN COMPONENT - L STREET 1	12.22.2008
A-359	ENLARGED BLDG SKIN COMPONENT - L STREET 2	12.22.2008
A-360	ENLARGED BLDG SKIN COMPONENT - L STREET 3	12.22.2008
A-361	ENLARGED BLDG SKIN COMPONENT - 10TH STREET 1	12.22.2008
A-403	MASS AVE SECTION	12.22.2008
A-404	9TH STREET SECTION	12.22.2008
A-405	L STREET SECTION	12.22.2008
A-406	CANOPY SECTIONS	12.22.2008
A-407	MECHANICAL PENTHOUSE SECTIONS	12.22.2008
A-505	MASS AVE STREET VIGNETTE 1	12.22.2008
A-506	MASS AVE STREET VIGNETTE 2	12.22.2008
A-507	MASS AVE STREET VIGNETTE 3	12.22.2008
A-508	MASS AVE STREET VIGNETTE 4	12.22.2008
A-509	9TH STREET STREET VIGNETTE 1	12.22.2008
A-510	9TH STREET STREET VIGNETTE 2	12.22.2008
A-511	L STREET STREET VIGNETTE 1	12.22.2008
A-512	L STREET STREET VIGNETTE 2	12.22.2008
A-513	CONVENTION CENTER UPPER LEVEL CONNECTOR RENDERING	12.22.2008
A-515A	MASS AND 9TH STREET LEVEL RENDERING - NIGHT	12.22.2008
A-515B	MASS AND 9TH STREET LEVEL RENDERING - DAY	12.22.2008
A-516	9TH AND L STREET LEVEL RENDERING	12.22.2008
A-517	L AND 10TH STREET LEVEL RENDERING	12.22.2008
A-518	MASS AND 9TH STREET AERIAL RENDERING	12.22.2008

RECEIVED  
 D.C. OFFICE OF ZONING  
 2009 DEC 22 PM 3:45

ZONING COMMISSION  
District of Columbia

CASE NO. 08-13  
EXHIBIT NO. 45A

POST HEARING SUBMISSION



THE COOPER CARRY - tvs  
COLLABORATIVE  
3520 PIEDMONT ROAD N.E. SUITE 200  
ATLANTA, GEORGIA 30305-1596  
404-237-2500 FAX 404-237-0276  
© 2008 COOPER CARRY INC.

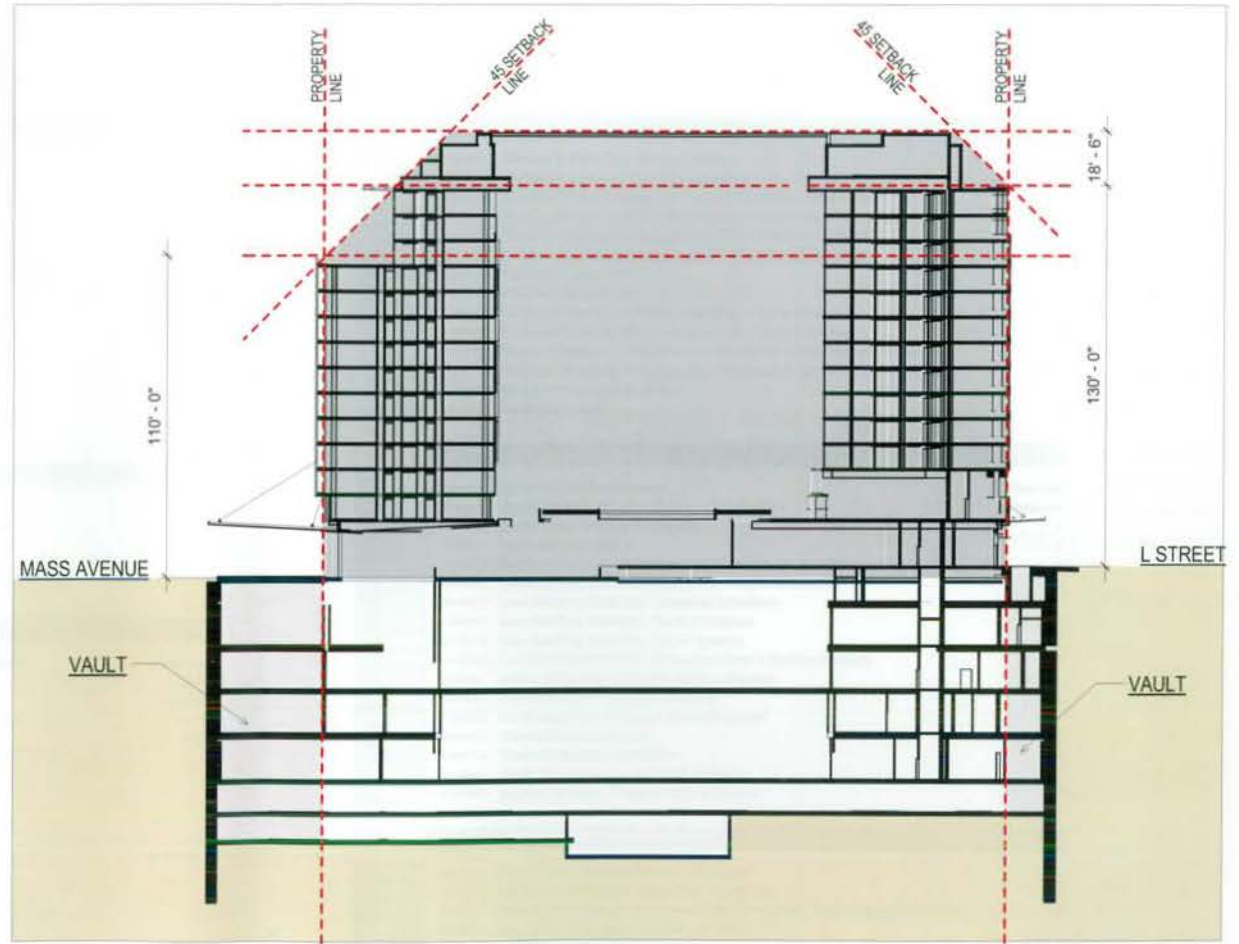
PROJECT WASHINGTON D.C. MARRIOTT MARQUIS			
TITLE COVER SHEET			
SCALE NTS	DATE 12-22-2008	REFERENCES	PROJECT NO. District of Columbia

DWG NO. PUD 370
A-001

ZONING COMMISSION  
District of Columbia  
CASE NO. 08-13  
EXHIBIT NO. 45A

# ZONING TABULATION

	PROVIDED	REQUIRED / MAXIMUM
ZONING DISTRICT:	DD / C-3-C	
SITE AREA:	82,887 sf	
REAR YARD:	45'-0"	27'-1" REQUIRED
SIDE YARD:	EAST: 0 WEST: 0	EAST: 0 WEST: 0
STAGE 2 PUD SUBMISSION: Total Proposed Site Development		
FAR:	Building: 9.234 Mechanical: 0.268	Building: 9.5 Mechanical: 0.37
GROSS FLOOR AREA:	751,832 sf	
HEIGHT:	Total Building Height: 130'-0" above 76.25' (L St. Mid-Block Elevation)  Building Height at Mass Ave. (includes 1:1 Setback): 110'-0" Above 72.65 (Mass. Ave. Mid-Block Elevation)	130'-0" Above 76.25'  130'-0" With 45 Degree Setback From 110'-0" Above 72.65'
STORIES:	13 Guest Room Floors Above Public Lobby	
LOT OCCUPANCY:	100%	100%
PENTHOUSE HEIGHT:	18'-6" max Top of Atrium Roof	18'-6" max 148'6"
PENTHOUSE AREA:	22,242 sf	0.37 x 82,888 = 30,668 sf allowable
PARKING:	Valet Provided: 401 Spaces Self-Parking Without Vault: 264 Spaces	Zoning Minimum: 388 Spaces
LOADING:	3@55 ft 3@30 ft 1@20 ft	2@55 ft 2@30 ft 1@20 ft



ZONING SECTION

POST HEARING SUBMISSION



THE COOPER CARRY - TVS COLLABORATIVE 3500 PIEDMONT ROAD N.E. SUITE 300 ATLANTA, GEORGIA 30305-1556 404-237-2000 FAX: 404-237-0276		PROJECT: WASHINGTON D.C. MARRIOTT MARQUIS TITLE: ZONING TABULATION / SECTION SCALE: NTS DATE: 12-22-2008 REFERENCES: PROJECT NO.: 207202-3058-001		DWG NO: PUD 370 A-004
--	--	--	--	-----------------------------

© 2008 COOPER CARRY INC.



LEED-NC

LEED-NC Version 2.2 Registered Project Checklist  
Marriott Marquis DC Convention Center  
Washington DC

Yes T No

8 1 5 Sustainable Sites 14 Points

Y	T	No	Req	Points
Y			Required	
1			Credit 1	1
1			Credit 2	1
1		1	Credit 3	1
1			Credit 4.1	1
1			Credit 4.2	1
1			Credit 4.3	1
1			Credit 4.4	1
1		1	Credit 5.1	1
1		1	Credit 5.2	1
1			Credit 6.1	1
1		1	Credit 6.2	1
1			Credit 7.1	1
1			Credit 7.2	1
1		1	Credit 8	1

Yes T No

3 2 Water Efficiency 5 Points

Y	T	No	Req	Points
1			Credit 1.1	1
1			Credit 1.2	1
1		1	Credit 2	1
1			Credit 3.1	1
1		1	Credit 3.2	1

Yes T No

7 2 8 Energy & Atmosphere 17 Points

Y	T	No	Req	Points
Y			Prereq 1	Required
Y			Prereq 2	Required
Y			Prereq 3	Required
4		5	Credit 1	1 to 10
1		3	Credit 2	1 to 3
1			Credit 3	1
1			Credit 4	1
1			Credit 5	1
1			Credit 6	1

continued

Yes T No

5 2 6 Materials & Resources 13 Points

Y	T	No	Req	Points
Y			Prereq 1	Required
1		1	Credit 1.1	1
1		1	Credit 1.2	1
1		1	Credit 1.3	1
1			Credit 2.1	1
1			Credit 2.2	1
1		1	Credit 3.1	1
1		1	Credit 3.2	1
1			Credit 4.1	1
1			Credit 4.2	1
1			Credit 5.1	1
1			Credit 5.2	1
1		1	Credit 6	1
1			Credit 7	1

Yes T No

6 2 7 Indoor Environmental Quality 15 Points

Y	T	No	Req	Points
Y			Prereq 1	Required
Y			Prereq 2	Required
1			Credit 1	1
1		1	Credit 2	1
1		1	Credit 3.1	1
1		1	Credit 3.2	1
1		1	Credit 4.1	1
1			Credit 4.2	1
1			Credit 4.3	1
1			Credit 4.4	1
1		1	Credit 5	1
1			Credit 6.1	1
1			Credit 6.2	1
1		1	Credit 7.1	1
1		1	Credit 7.2	1
1		1	Credit 8.1	1
1		1	Credit 8.2	1

Yes T No

4 1 Innovation & Design Process 5 Points

Y	T	No	Req	Points
1			Credit 1.1	1
1			Credit 1.2	1
1			Credit 1.3	1
1			Credit 1.4	1
1			Credit 2	1

Yes T No

33 0 28 Project Totals (pre-certification estimates) 69 Points

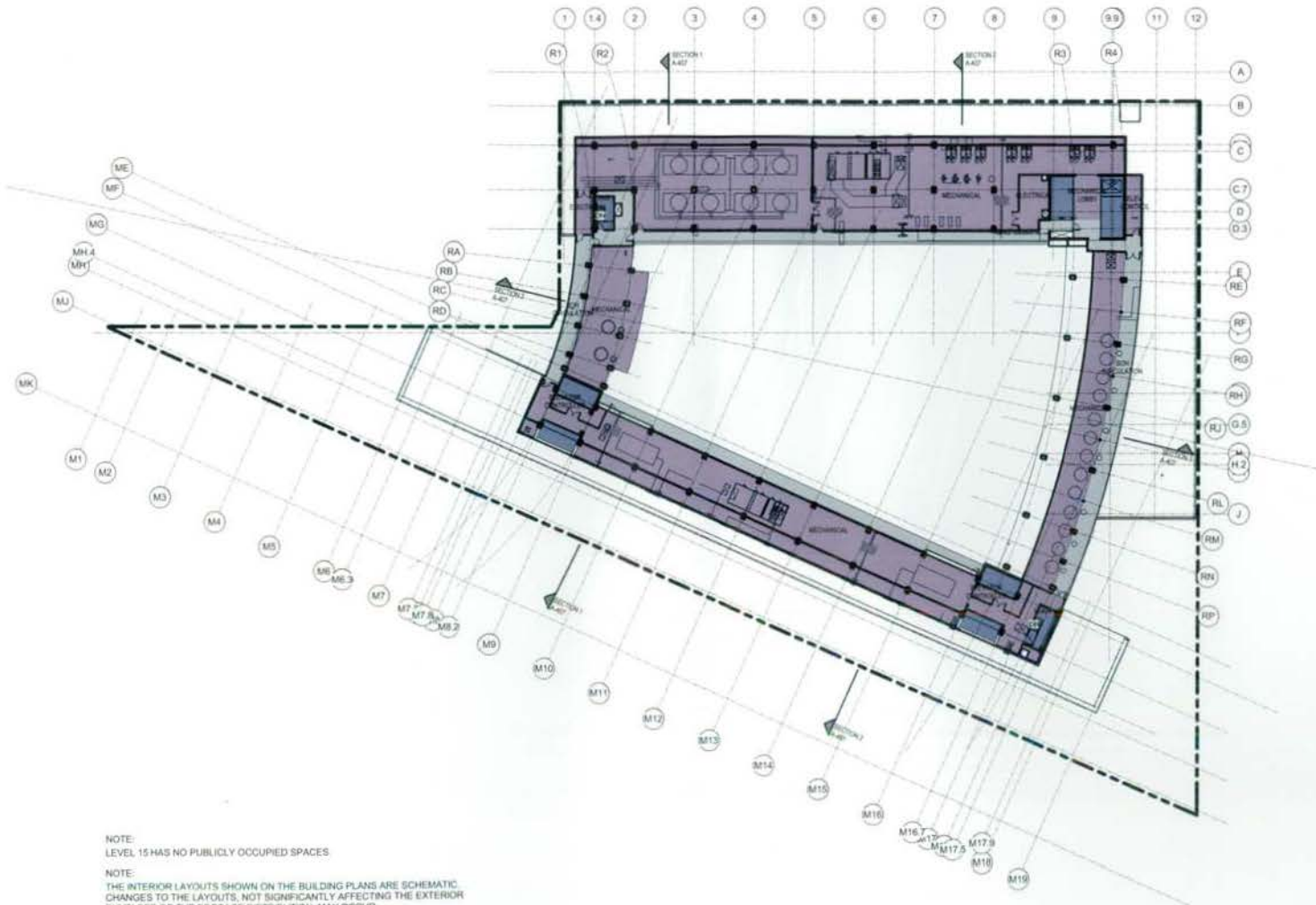
Certified 29-32 points Silver 33-38 points Gold 39-51 points Platinum 52-69 points

POST HEARING SUBMISSION



THE COOPER CARRY - TVS COLLABORATIVE  3520 PIEDMONT ROAD N.E. SUITE 205 ATLANTA, GEORGIA 30305-1595 404-237-2000 FAX 404-237-0278	PROJECT WASHINGTON D.C. MARRIOTT MARQUIS  TITLE LEED ELEMENTS - SILVER  SCALE Author	DATE 12-22-2008  REFERENCES   PROJECT NO. 207202 3058-000
--	---	---

DWG NO PUD 370 A-005
----------------------------



- public circulation/lobby
- exhibit hall
- meeting room
- restaurant
- retail
- guestroom
- public circulation
  
- public restroom
- health club
- pool
  
- admin
- back of house
- back of house circulation
- service elevator/ exit stair
- mechanical
  
- terrace/ pavement
- loading dock
- road/ parking
- surrounding building
- patch/ shadow
  
- grass
- shrubs / planter
- tall tree
- low tree
- site fountain
- lake/ ocean

NOTE:  
LEVEL 15 HAS NO PUBLICLY OCCUPIED SPACES

NOTE:  
THE INTERIOR LAYOUTS SHOWN ON THE BUILDING PLANS ARE SCHEMATIC.  
CHANGES TO THE LAYOUTS, NOT SIGNIFICANTLY AFFECTING THE EXTERIOR  
ENVELOPE OR THE FOOTAGE DISTRIBUTION, MAY OCCUR.

POST HEARING SUBMISSION

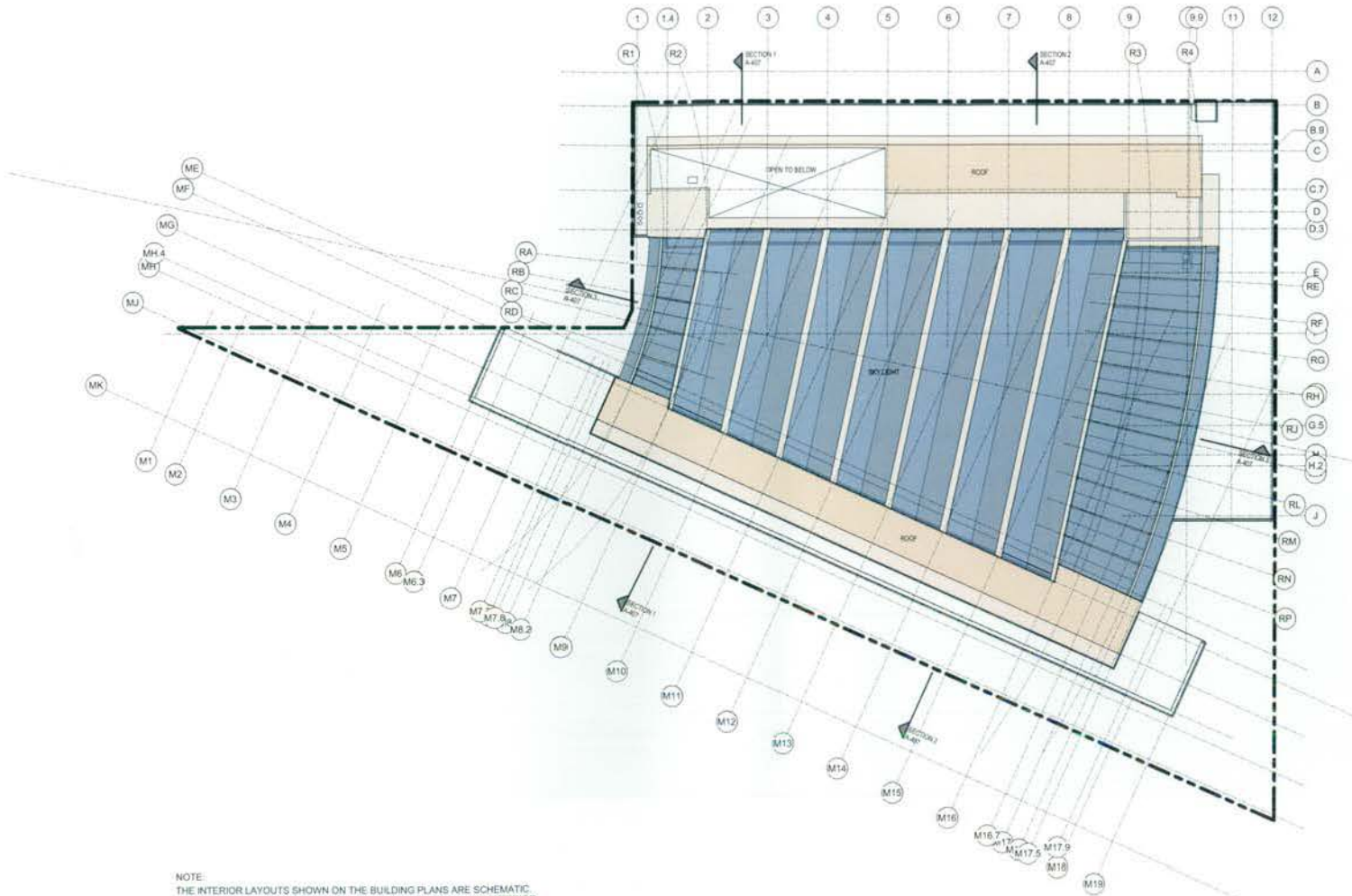


THE COOPER CARRY - TVS  
COLLABORATIVE  
  
9520 PIEDMONT ROAD N.E. SUITE 200  
ATLANTA, GEORGIA 30329-1898  
404-237-2000 FAX: 404-237-0278

© 2008 COOPER CARRY INC.

PROJECT				WASHINGTON D.C. MARRIOTT MARQUIS	
TITLE				FLOOR PLAN - LEVEL 15 MECHANICAL PENTHOUSE (205'-8")	
SCALE	DATE	REFERENCES	PROJECT NO.		
1" = 50'-0"	12-22-2008		30720 3058-000		

DWG NO.  
PUD 370  
A-219



- public circulation/lobby
- exhibit hall
- meeting room
- restaurant
- retail
- guestroom
- public circulation
- public restroom
- health club
- GLASS
- admin
- back of house
- back of house circulation
- service elevator/ exit stair
- mechanical
- ROOF
- loading dock
- road/ parking
- surrounding building
- pothole/ shadow
- grass
- shrub / planter
- tall tree
- low tree
- site fountain
- lake/ ocean

POST HEARING SUBMISSION



THE COOPER CARRY - TVS  
COLLABORATIVE  
3520 PIEDMONT ROAD N.E. SUITE 200  
ATLANTA, GEORGIA 30305-1595  
404-237-2000 FAX 404-237-0276

© 2008 COOPER CARRY INC.

PROJECT WASHINGTON D.C. MARRIOTT MARQUIS			
TITLE ROOF PLAN (224'-9")			
SCALE 1" = 50'-0"	DATE 12-22-2008	REFERENCES	PROJECT NO. 207202 3058-000

DWG NO.  
PUD 370  
A-220



POST HEARING SUBMISSION



THE COOPER CARRY - TVS  
COLLABORATIVE  
3520 PIEDMONT ROAD N.E. SUITE 200  
ATLANTA, GEORGIA 30305-1595  
404-237-2000 FAX: 404-237-0276

© 2008 COOPER CARRY INC.

PROJECT		WASHINGTON D.C. MARRIOTT MARQUIS	
TITLE			
BUILDING ELEVATIONS - MASS. AVE			
SCALE	DATE	REFERENCES	PROJECT NO.
1" = 40'-0"	12-22-2008		207203 3058-000

DWG NO.
PUD 370
A-301



POST HEARING SUBMISSION

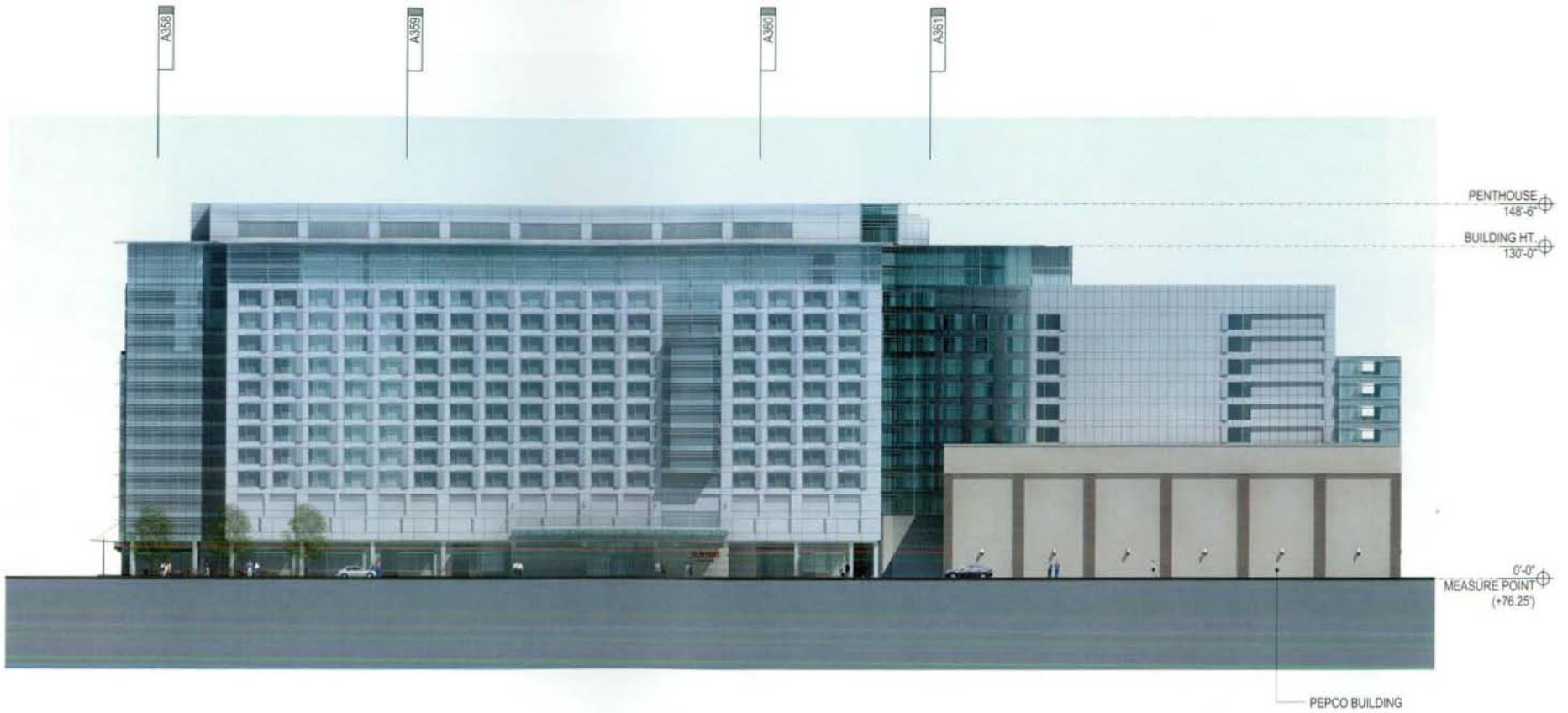


THE COOPER CARRY - TVS  
COLLABORATIVE  
3520 PIEDMONT ROAD N.E. SUITE 200  
ATLANTA, GEORGIA 30305-1595  
404-237-2000 FAX 404-237-0278

© 2008 COOPER CARRY INC.

PROJECT				WASHINGTON D.C. MARRIOTT MARQUIS	
TITLE				BUILDING ELEVATIONS - 9TH STREET	
SCALE	DATE	REFERENCES	PROJECT NO.		
1" = 40'-0"	12-22-2008		297202	3058-000	

DWG NO.  
PUD 370  
A-302



POST HEARING SUBMISSION



THE COOPER CARRY - TVS COLLABORATIVE  3520 FREDMONT ROAD N.E. SUITE 200 ATLANTA, GEORGIA 30305-1595 404-237-2000 FAX: 404-237-0276		PROJECT WASHINGTON D.C. MARRIOTT MARQUIS	
		TITLE BUILDING ELEVATION - L STREET	
SCALE	DATE	REFERENCES	PROJECT NO.
1" = 40'-0"	12-22-2008		207202 3058-000

DWG NO.
PUD 370
A-303

© 2008 COOPER CARRY INC.



PENTHOUSE  
148'-6"

ROOF  
130'-0"

PLUMBERS UNION  
BUILDING

PEPCO BUILDING

0'-0"  
MEASURE POINT  
(+76.25')

POST HEARING SUBMISSION



THE COOPER CARRY - TVS  
COLLABORATIVE  
3520 PIEDMONT ROAD N.E. SUITE 200  
ATLANTA, GEORGIA 30325-1596  
404-237-2090 FAX: 404-237-0278

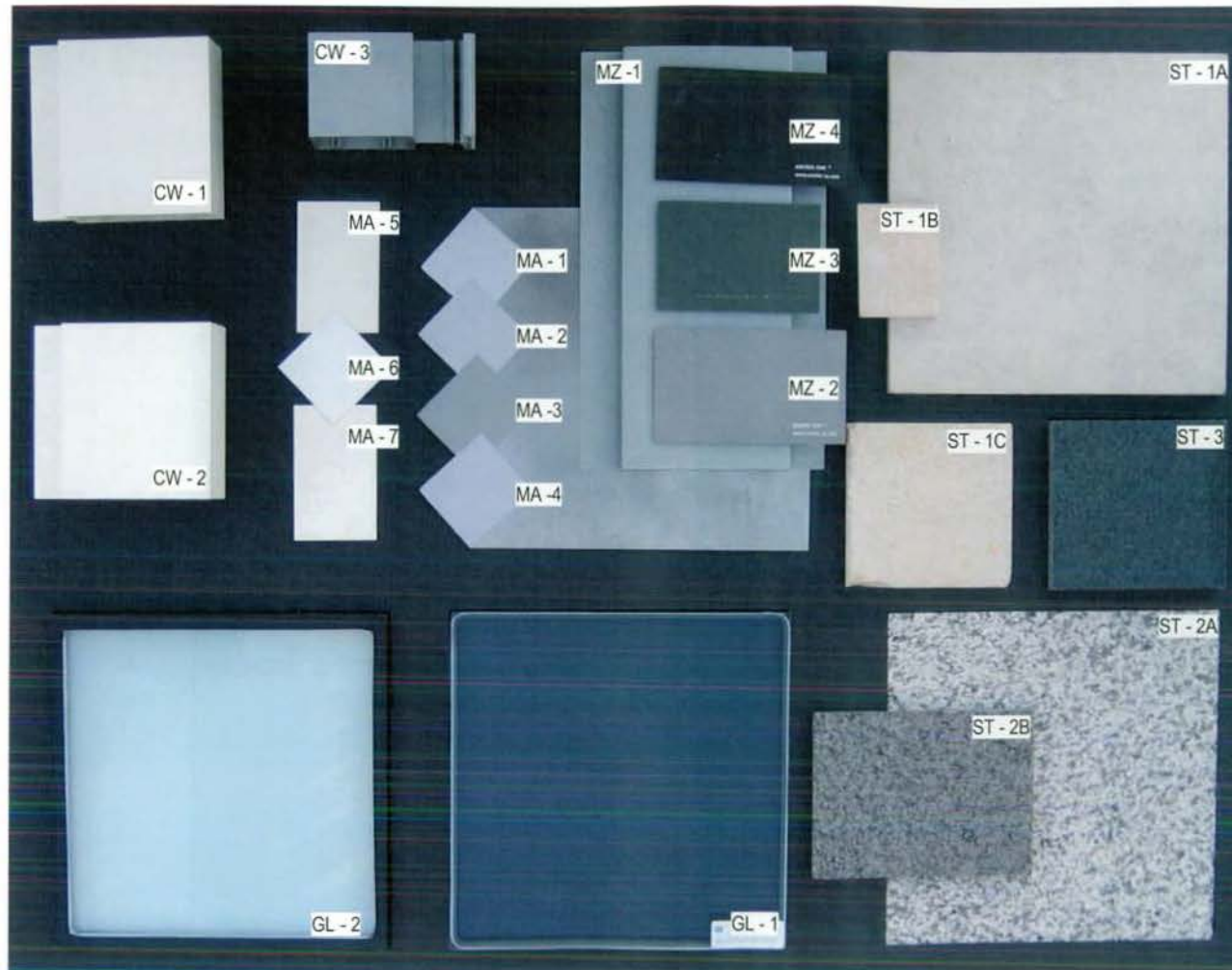
© 2008 COOPER CARRY INC.

PROJECT WASHINGTON D.C. MARRIOTT MARQUIS

TITLE BUILDING ELEVATION - 10TH STREET

SCALE	DATE	REFERENCES	PROJECT NO.
	12-22-2008		207202 3058-000

DWG NO.  
PUD 370  
A-304



MZ - METAL PANEL ZINC  
 MS - METAL PANEL STEEL  
 MA - METAL PANEL ALUMINUM

GL - 1 GLASS CLEAR  
 1A GLASS CLEAR  
 GL - 2 GLASS SPANDREL

ST - 1 LIMESTONE  
 ST - 2 GRANITE  
 ST - 3 DARK GRANITE

Materials represent range of colors and textures to be used.

FOR LOCATIONS OF MATERIALS SEE SHEETS A-351 THROUGH A-361

POST HEARING SUBMISSION



THE COOPER CARRY - TVS COLLABORATIVE 2520 PIEDMONT ROAD N.E. SUITE 200 ATLANTA, GEORGIA 30305-1595 404-237-2000 FAX: 404-237-2276		PROJECT WASHINGTON D.C. MARRIOTT MARQUIS TITLE MATERIAL BOARD SCALE DATE 12-22-2008 REFERENCES PROJECT NO. 297202 3058-000	
--	--	--	--

DWG NO.	PUD 370
	A-350



FOR MATERIALS SEE SHEET  
A-350

NOTE: FOR LOCATIONS OF  
COMPONENTS SEE SHEETS  
A-301 THROUGH A-304

POST HEARING SUBMISSION



THE COOPER CARRY - TVS  
COLLABORATIVE

3520 PIEDMONT ROAD N.E. SUITE 200  
ATLANTA, GEORGIA 30325-1565  
404-237-2000 FAX: 404-237-0278

© 2008 COOPER CARRY INC.

PROJECT WASHINGTON D.C. MARRIOTT MARQUIS

TITLE ENLARGED BLDG SKIN COMPONENT - MASS AVE 1

SCALE	DATE	REFERENCES	PROJECT NO.
Author	12-22-2008		207202 3058-000

DWG NO.  
PUD 370  
A-351



FOR MATERIALS SEE SHEET  
A-350

NOTE: FOR LOCATIONS OF  
COMPONENTS SEE SHEETS  
A-301 THROUGH A-304

POST HEARING SUBMISSION

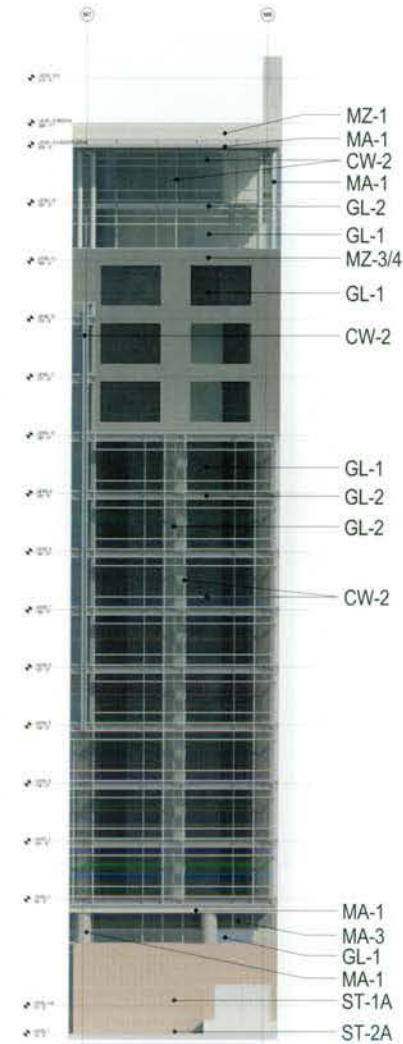
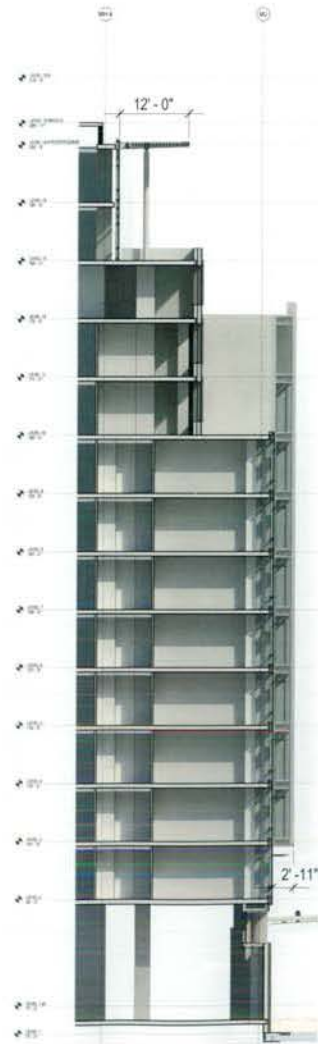


THE COOPER CARRY - TVS  
COLLABORATIVE  
3820 PIEDMONT ROAD N.E. SUITE 200  
ATLANTA, GEORGIA 30305-1595  
404-237-2000 FAX: 404-237-0278

© 2008 COOPER CARRY INC.

PROJECT	WASHINGTON D.C. MARRIOTT MARQUIS		
TITLE	ENLARGED BLDG SKIN COMPONENT - MASS AVE 2		
SCALE	DATE	REFERENCES	PROJECT NO.
	12-22-2008		20700 3058-000

DWG NO  
PUD 370  
A-352



FOR MATERIALS SEE SHEET  
A-350

NOTE: FOR LOCATIONS OF  
COMPONENTS SEE SHEETS  
A-301 THROUGH A-304

POST HEARING SUBMISSION

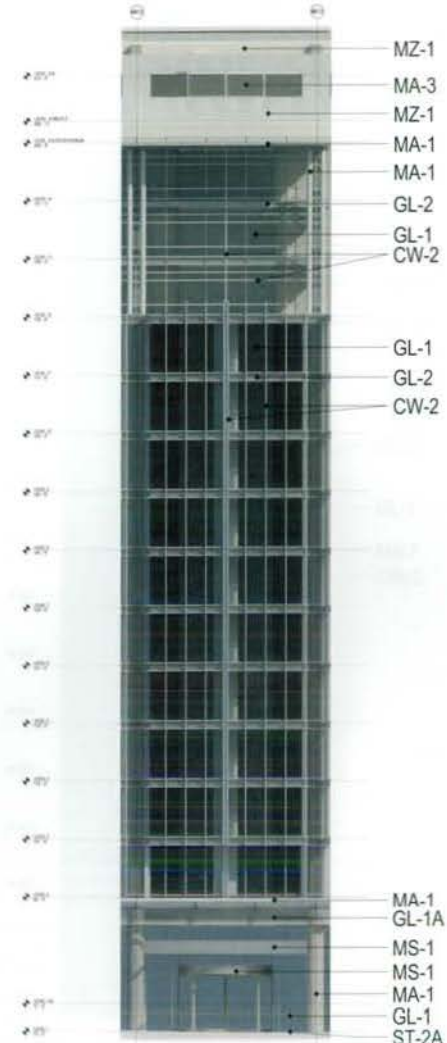
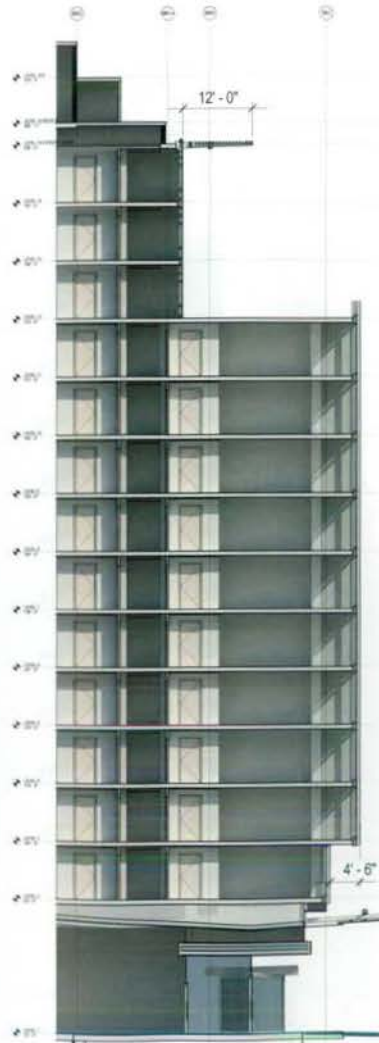


THE COOPER CARRY - TVS  
COLLABORATIVE  
3520 FREDMONT ROAD N.E. SUITE 200  
ATLANTA, GEORGIA 30305-1586  
404-237-2000 FAX: 404-237-0278

© 2008 COOPER CARRY INC.

PROJECT		WASHINGTON D.C. MARRIOTT MARQUIS	
TITLE			
ENLARGED BLDG SKIN COMPONENT - MASS AVE 3			
SCALE	DATE	REFERENCES	PROJECT NO.
	12-22-2008		207202 3058-000

DWG NO.  
PUD 370  
A-353



FOR MATERIALS SEE SHEET  
A-350

NOTE: FOR LOCATIONS OF  
COMPONENTS SEE SHEETS  
A-301 THROUGH A-304

POST HEARING SUBMISSION

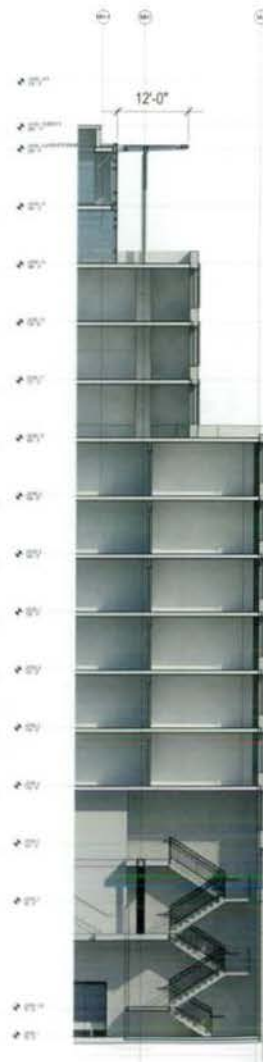


THE COOPER CARRY - TVS  
COLLABORATIVE  
3620 PIEDMONT ROAD N.E., SUITE 200  
ATLANTA, GEORGIA 30305-1599  
404-237-2000 FAX: 404-237-0276

© 2008 COOPER CARRY INC.

PROJECT		WASHINGTON D.C. MARRIOTT MARQUIS	
TITLE			
ENLARGED BLDG SKIN COMPONENT - MASS AVE 4			
SCALE	DATE	REFERENCES	PROJECT NO.
Author	12-22-2008		207200 3058-000

DWG. NO.  
PUD 370  
A-354



- MZ-1
- MA-1
- MA-1
- GL-2
- CW-2
- GL-1
- CW-2
- MZ-3/4
- GL-2
- GL-1
- MA-7
- CW-2
- MA-1
- MA-3
- ST-1A
- ST-2A

FOR MATERIALS SEE SHEET  
A-350

NOTE: FOR LOCATIONS OF  
COMPONENTS SEE SHEETS  
A-301 THROUGH A-304

POST HEARING SUBMISSION

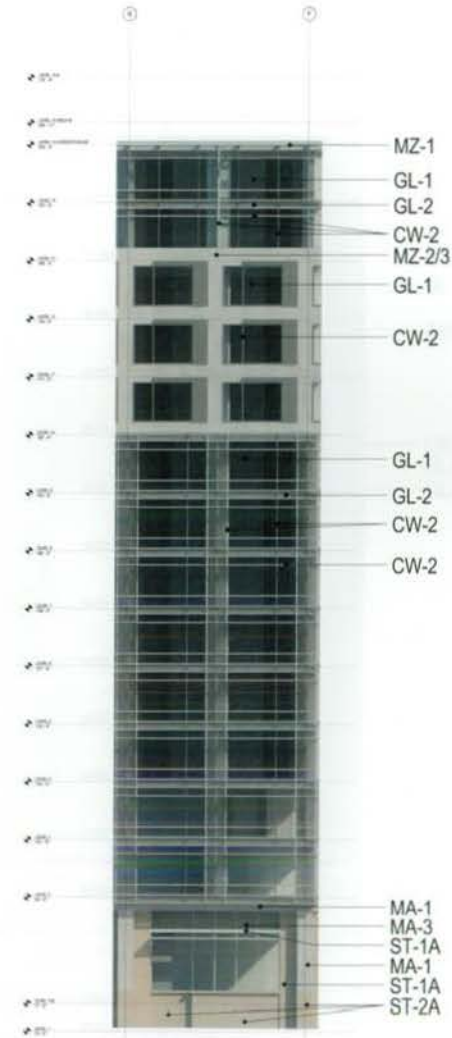


THE COOPER CARRY - TVS  
COLLABORATIVE  
3520 PIEDMONT ROAD N.E. SUITE 200  
ATLANTA, GEORGIA 30305-1595  
404-237-2000 FAX 404-237-0278

© 2008 COOPER CARRY INC.

PROJECT		WASHINGTON D.C. MARRIOTT MARQUIS	
TITLE			
ENLARGED BLDG SKIN COMPONENT - MASS AVE 5			
SCALE	DATE	REFERENCES	PROJECT NO.
Author	12-22-2008		207202 3058-000

DWG NO.  
PUD 370  
A-355



FOR MATERIALS SEE SHEET  
A-350

NOTE: FOR LOCATIONS OF  
COMPONENTS SEE SHEETS  
A-301 THROUGH A-304

POST HEARING SUBMISSION



THE COOPER CARRY - TVS  
COLLABORATIVE

3020 PIEDMONT ROAD N.E. SUITE 200  
ATLANTA, GEORGIA 30305-1595  
404-237-2000 FAX 404-237-0276

© 2008 COOPER CARRY INC

PROJECT WASHINGTON D.C. MARRIOTT MARQUIS

TITLE ENLARGED BLDG SKIN COMPONENT - 9TH STREET 1

SCALE Author	DATE 12-22-2008	REFERENCES	PROJECT NO. 207202 3098-000
-----------------	--------------------	------------	-----------------------------------

DWG NO.

PUD 370

A-356



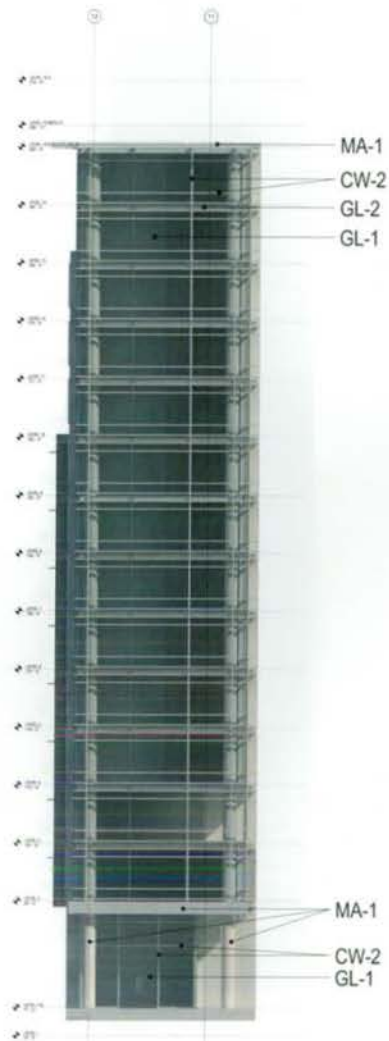
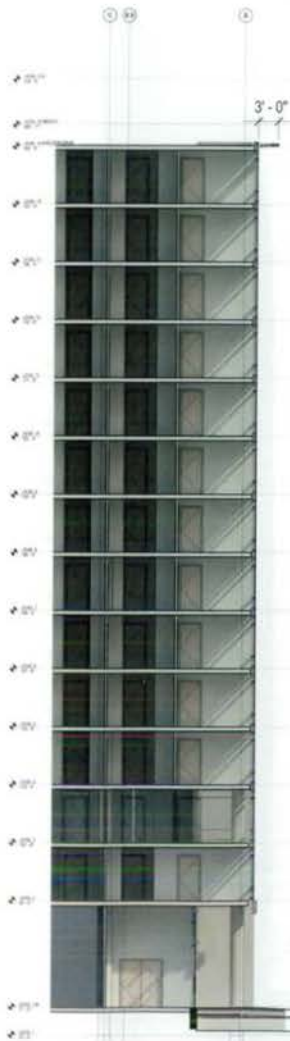
FOR MATERIALS SEE SHEET  
A-350

NOTE: FOR LOCATIONS OF  
COMPONENTS SEE SHEETS  
A-301 THROUGH A-304

POST HEARING SUBMISSION



THE COOPER CARRY - TVS COLLABORATIVE  3530 PIEDMONT ROAD N.E. SUITE 200 ATLANTA, GEORGIA 30305-1566 404-337-2000 FAX: 404-337-0278	PROJECT WASHINGTON D.C. MARRIOTT MARQUIS		DWG NO. PUD 370 A-357
	TITLE ENLARGED BLDG SKIN COMPONENT - 9TH STREET 2		
© 2008 COOPER CARRY INC.	SCALE Author	DATE 12-22-2008	REFERENCES PROJECT NO. 307002 3058-000



FOR MATERIALS SEE SHEET  
A-350

NOTE: FOR LOCATIONS OF  
COMPONENTS SEE SHEETS  
A-301 THROUGH A-304

POST HEARING SUBMISSION

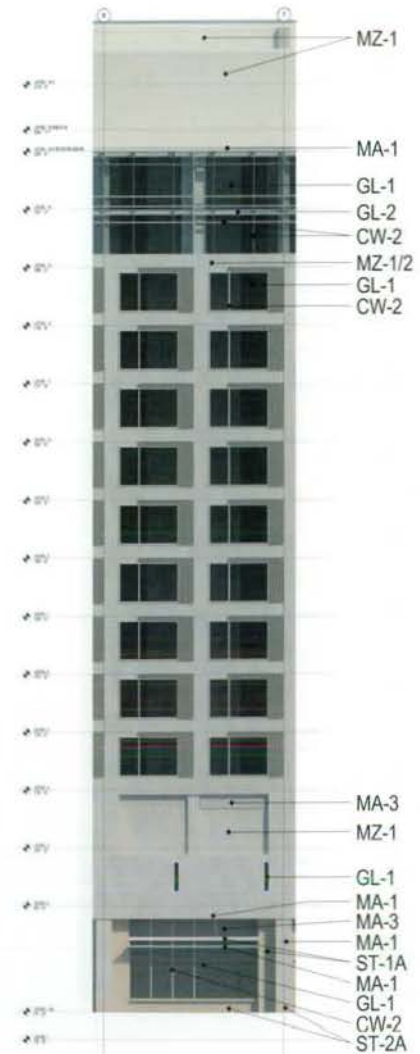
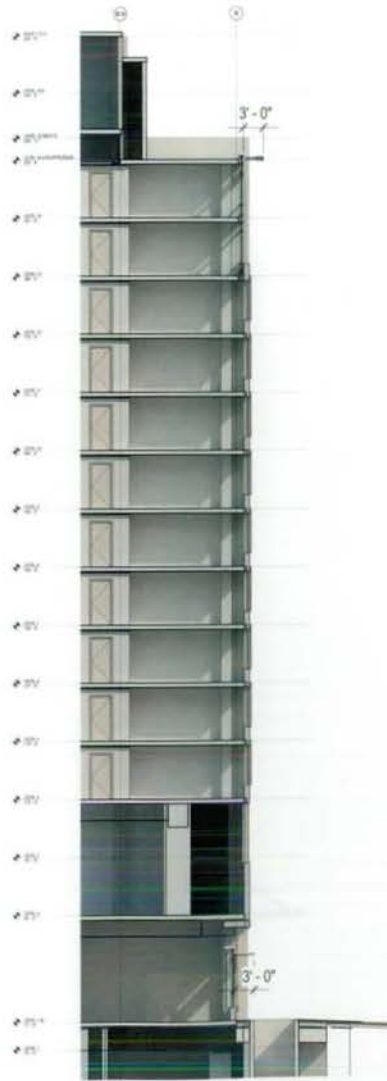
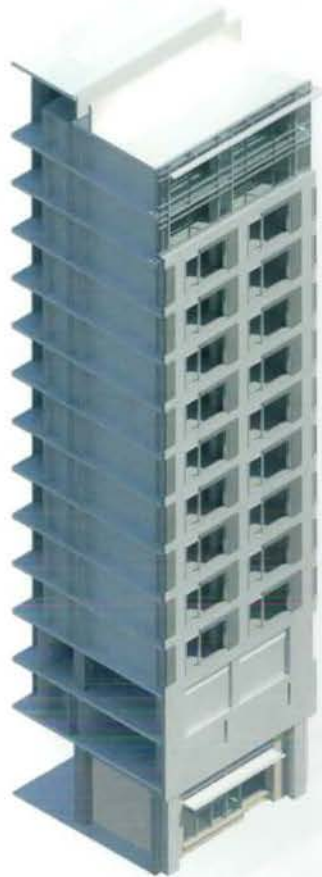


THE COOPER CARRY - TVS  
COLLABORATIVE  
3550 PIEDMONT ROAD N.E. SUITE 200  
ATLANTA, GEORGIA 30305-1566  
404-237-2000 FAX: 404-237-0278

© 2008 COOPER CARRY INC.

PROJECT		WASHINGTON D.C. MARRIOTT MARQUIS	
TITLE			
ENLARGED BLDG SKIN COMPONENT - L STREET 1			
SCALE	DATE	REFERENCES	PROJECT NO
Author	12-22-2008		207202 3058-000

DWG NO.  
PUD 370  
A-358



FOR MATERIALS SEE SHEET  
A-350

NOTE: FOR LOCATIONS OF  
COMPONENTS SEE SHEETS  
A-301 THROUGH A-304

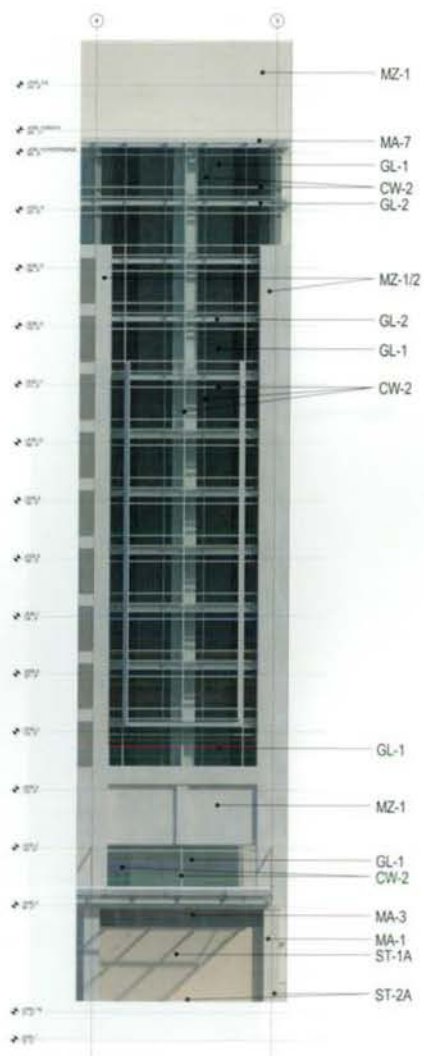
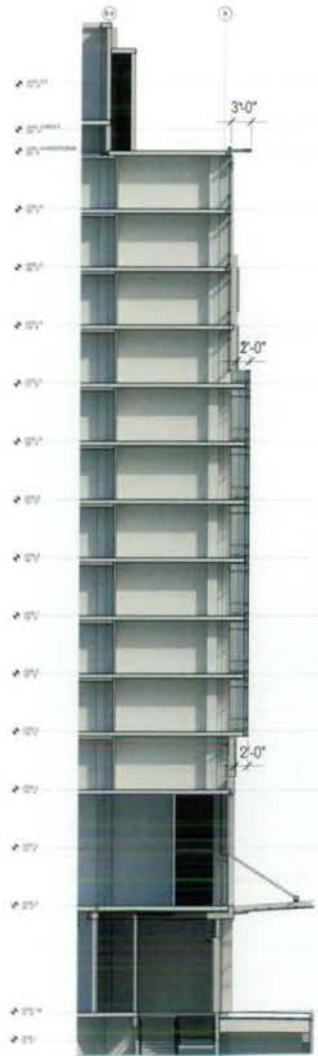
POST HEARING SUBMISSION



THE COOPER CARRY - TVS  
COLLABORATIVE  
3520 PIEDMONT ROAD N.E. SUITE 200  
ATLANTA, GEORGIA 30305-1595  
404-237-2000 FAX: 404-237-0276

PROJECT WASHINGTON D.C. MARRIOTT MARQUIS			
TITLE ENLARGED BLDG SKIN COMPONENT - L STREET 2			
SCALE Author	DATE 12-22-2008	REFERENCES	PROJECT NO. 207203 3058-000

DWG NO.  
PUD 370  
A-359



FOR MATERIALS SEE SHEET  
A-350

NOTE: FOR LOCATIONS OF  
COMPONENTS SEE SHEETS  
A-301 THROUGH A-304

POST HEARING SUBMISSION



THE COOPER CARRY - TVS  
COLLABORATIVE  
3520 PIEDMONT ROAD N.E. SUITE 200  
ATLANTA, GEORGIA 30305-1595  
404-237-2000 FAX: 404-237-0276

© 2008 COOPER CARRY INC

PROJECT		WASHINGTON D.C. MARRIOTT MARQUIS	
TITLE			
ENLARGED BLDG SKIN COMPONENT - L STREET 3			
SCALE	DATE	REFERENCES	PROJECT NO.
Author	12-22-2008		207202 3058-000

DWG NO.  
PUD 370  
A-360



FOR MATERIALS SEE SHEET  
A-350

NOTE: FOR LOCATIONS OF  
COMPONENTS SEE SHEETS  
A-301 THROUGH A-304

POST HEARING SUBMISSION



THE COOPER CARRY - TVS COLLABORATIVE  3520 PIEDMONT ROAD N.E. SUITE 200 ATLANTA, GEORGIA 30305-1505 404-237-2000 FAX 404-237-0276		PROJECT WASHINGTON D.C. MARRIOTT MARQUIS  TITLE ENLARGED BLDG SKIN COMPONENT - 10TH STREET 1  SCALE Author		DATE 12-22-2008  REFERENCES		PROJECT NO. 207202 3058-000	
--	--	---	--	--------------------------------------	--	-----------------------------------	--

DWG NO.	PUD 370
	A-361



EXISTING CHURCH BUILDING

MARRIOTT MARQUIS



POST HEARING SUBMISSION



THE COOPER CARRY - tvs  
COLLABORATIVE  
3520 PIEDMONT ROAD N.E. SUITE 200  
ATLANTA, GEORGIA 30305-1196  
404-237-0000 FAX: 404-237-0276

© 2008 COOPER CARRY INC.

PROJECT		WASHINGTON D.C. MARRIOTT MARQUIS	
TITLE			
MASS AVE SECTION			
SCALE	DATE	REFERENCES	PROJECT NO.
1/32" = 1'-0"	12-22-2008		307202 3058-000

DWG NO.  
PUD 370  
A-403

LIMIT OF MECHANICAL PENTHOUSE 148' - 6"

TOP OF ROOF 130' - 0"

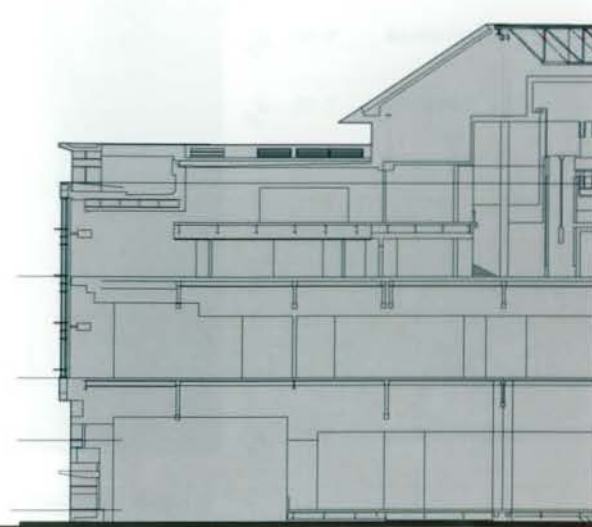
BUILDING HEIGHT 110' - 0"

A.F.L. BLDG. 90' - 0"

MEASURE PT. (+72.65') 0' - 0"



MARRIOTT MARQUIS



CONVENTION CENTER



POST HEARING SUBMISSION



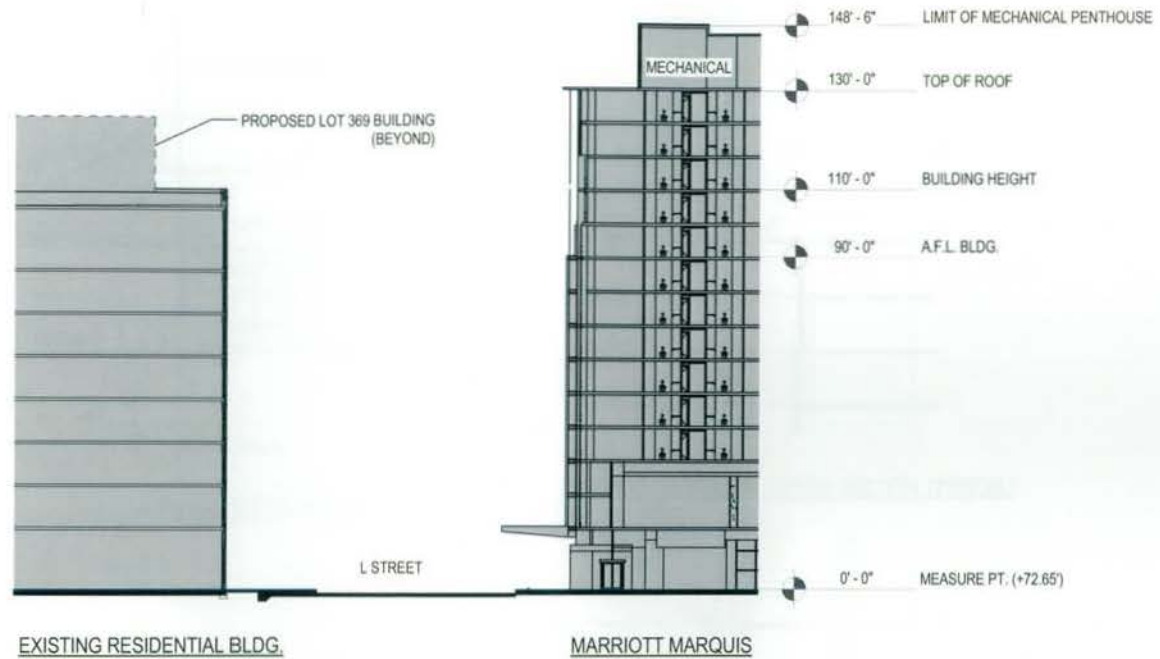
THE COOPER CARRY - tvs  
COLLABORATIVE

3520 PIEDMONT ROAD N.E. SUITE 200  
ATLANTA, GEORGIA 30305-1565  
404-237-2000 FAX: 404-237-0278

© 2008 COOPER CARRY INC.

PROJECT WASHINGTON D.C. MARRIOTT MARQUIS			
TITLE 9TH STREET SECTION			
SCALE 1/32"=1'-0"	DATE 12-22-2008	REFERENCES	PROJECT NO. 207202 3058-000

DWG NO.  
PUD 370  
A-404

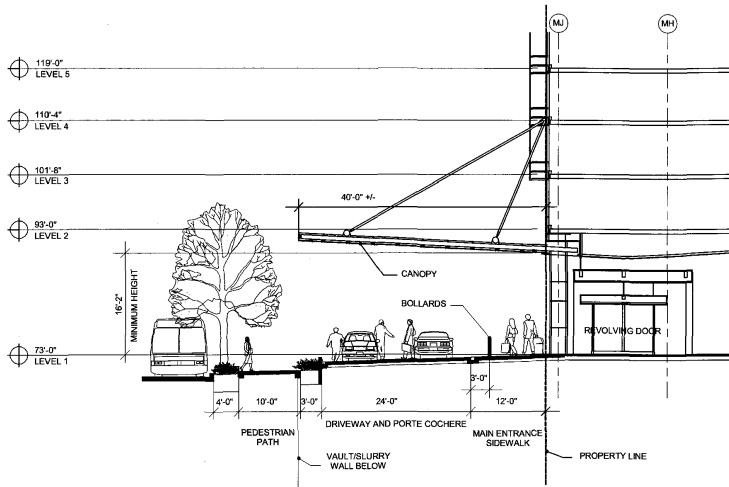


POST HEARING SUBMISSION

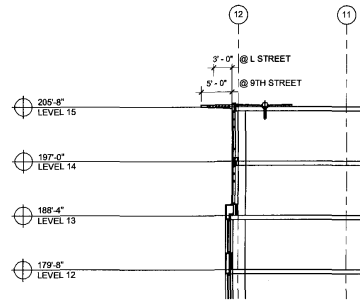


THE COOPER CARRY - TVS COLLABORATIVE 3520 PIEDMONT ROAD N.E. SUITE 200 ATLANTA, GEORGIA 30305-1596 404-237-2000 FAX: 404-237-0278		PROJECT WASHINGTON D.C. MARRIOTT MARQUIS TITLE L STREET SECTION SCALE 1/32"=1'-0" DATE 12-22-2008		REFERENCES PROJECT NO. 207202 3058-000	
--	--	--	--	---	--

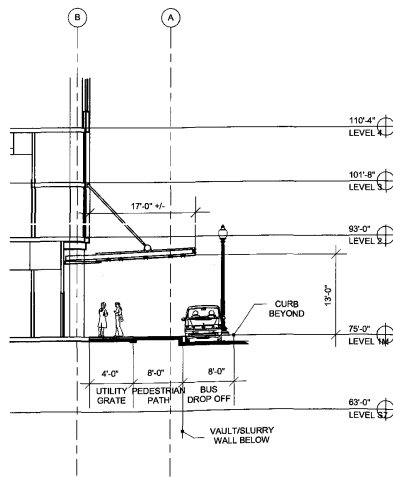
DWG NO.	PUD 370
	A-405



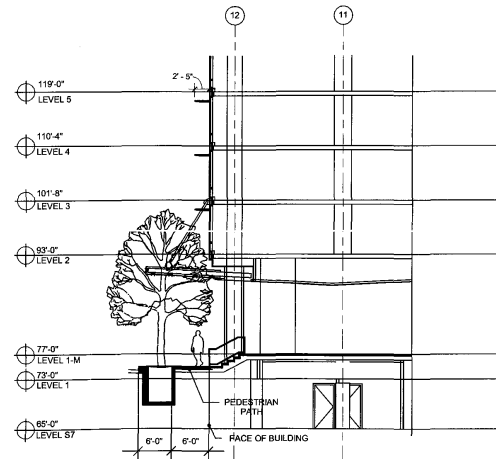
**MASSACHUSETTS AVENUE**



**9TH AND L STREET - UPPER SECTION (TYPICAL)**



**L STREET**

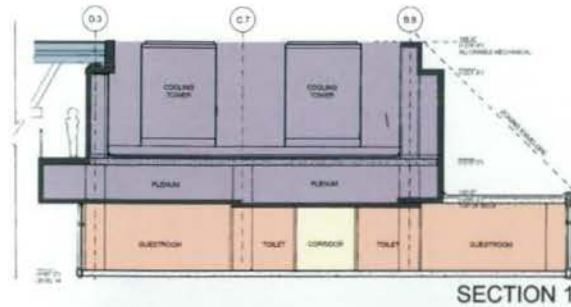
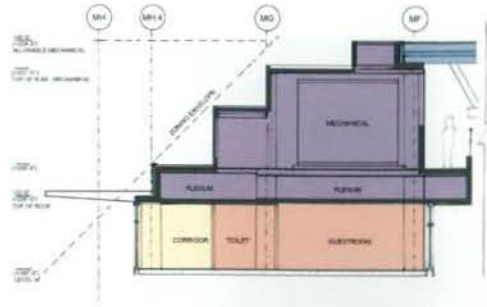


**9TH STREET**

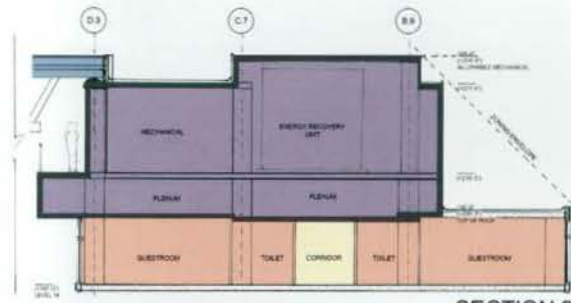
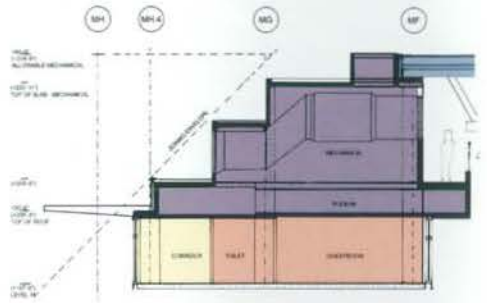
**POST HEARING SUBMISSION**



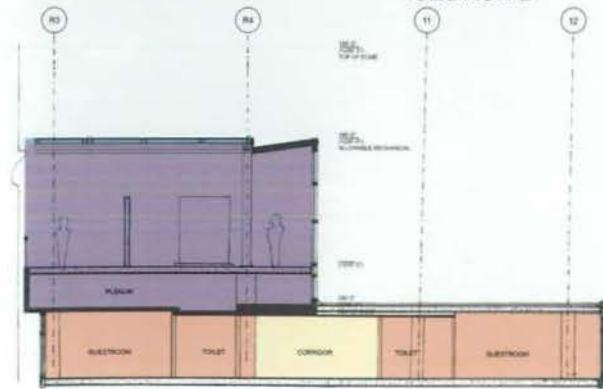
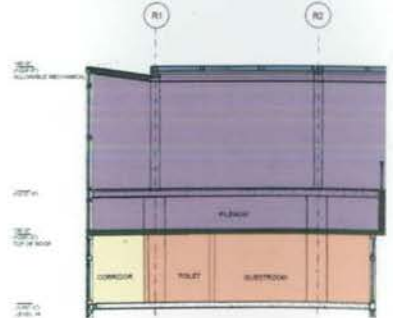
THE COOPER CARRY - TVS COLLABORATIVE  3520 PIEDMONT ROAD N.E. SUITE 200 ATLANTA, GEORGIA 30305-1595 404-237-2000 FAX: 404-237-0276		PROJECT WASHINGTON D.C. MARRIOTT MARQUIS		DWG NO. <b>PUD 370</b>  <b>A-406</b>
TITLE CANOPY SECTIONS		DATE 12-22-2008	REFERENCES PROJECT NO. 207202 3058-000	



SECTION 1



SECTION 2



SECTION 3

POST HEARING SUBMISSION



THE COOPER CARRY - TVS  
COLLABORATIVE  
3020 PIEDMONT ROAD N.E. SUITE 200  
ATLANTA, GEORGIA 30305-1595  
404-237-2000 FAX 404-237-0278

© 2008 COOPER CARRY INC.

PROJECT		WASHINGTON D.C. MARRIOTT MARQUIS	
TITLE			
MECHANICAL PENTHOUSE SECTIONS			
SCALE	DATE	REFERENCER	PROJECT NO.
	12-22-2008		207202 3058-000

DWG NO.  
PUD 370  
A-407



POST HEARING SUBMISSION



THE COOPER CARRY - TVS  
COLLABORATIVE  
3520 PIEDMONT ROAD N.E., SUITE 200  
ATLANTA, GEORGIA 30305-1595  
404-237-2000 FAX 404-237-0278

© 2008 COOPER CARRY INC.

PROJECT		WASHINGTON D.C. MARRIOTT MARQUIS	
TITLE			
MASS AVE STREET VIGNETTE 1			
SCALE	DATE	REFERENCES	PROJECT NO.
	12-22-2008		207200 3058-000

DWG NO  
PUD 370  
A-505



POST HEARING SUBMISSION



THE COOPER CARRY - TVS COLLABORATIVE  3520 PIEDMONT ROAD, N.E. SUITE 200 ATLANTA, GEORGIA 30305-1595 404-237-2000 FAX: 404-237-0278		PROJECT WASHINGTON D.C. MARRIOTT MARQUIS	
		TITLE MASS AVE STREET VIGNETTE 2	
SCALE	DATE	REFERENCES	PROJECT NO.
NTS	12-22-2008		207202 3056-000

DWG NO.
PUD 370
A-506



POST HEARING SUBMISSION



THE COOPER CARRY - TVS COLLABORATIVE 3325 PIEDMONT ROAD N.E. SUITE 200 ATLANTA, GEORGIA 30305-1595 404-237-2000 FAX: 404-237-0276		PROJECT WASHINGTON D.C. MARRIOTT MARQUIS	
		TITLE MASS AVE STREET VIGNETTE 3	
SCALE Author	DATE 12-22-2008	REFERENCES	PROJECT NO. 207202 3058-000

DWG NO.  
 PUD 370  
 A-507



POST HEARING SUBMISSION



THE COOPER CARRY - TVS  
COLLABORATIVE  
3520 PIEDMONT ROAD N.E. SUITE 200  
ATLANTA, GEORGIA 30305-1595  
404-237-2000 FAX: 404-237-0276

© 2008 COOPER CARRY INC.

PROJECT		WASHINGTON D.C. MARRIOTT MARQUIS	
TITLE			
MASS AVE STREET VIGNETTE 4			
SCALE	DATE	REFERENCES	PROJECT NO
Author	12-22-2008		207202 3058-000

DWG NO.  
PUD 370  
A-508



POST HEARING SUBMISSION



THE COOPER CARRY - TVS  
COLLABORATIVE  
3520 PIEDMONT ROAD N.E. SUITE 200  
ATLANTA, GEORGIA 30305-1595  
404-237-2000 FAX: 404-237-0278

© 2008 COOPER CARRY INC.

PROJECT	WASHINGTON D.C. MARRIOTT MARQUIS		
TITLE	9TH STREET STREET VIGNETTE 1		
SCALE	DATE	REFERENCES	PROJECT NO.
Author	12-22-2008		207203 3058-000

DWG NO.	PUD 370
	A-509



POST HEARING SUBMISSION



THE COOPER CARRY - TVS  
COLLABORATIVE  
3520 PIEDMONT ROAD N.E. SUITE 200  
ATLANTA, GEORGIA 30305-1996  
404-237-2000 FAX: 404-237-0278

© 2008 COOPER CARRY INC.

PROJECT		WASHINGTON D.C. MARRIOTT MARQUIS	
TITLE			
9TH STREET STREET VIGNETTE 2			
SCALE	DATE	REFERENCES	PROJECT NO.
Author	12-22-2008		307292 3058-000

DWG NO:  
PUD 370  
A-510



POST HEARING SUBMISSION



THE COOPER CARRY - TVS  
COLLABORATIVE  
3820 PIEDMONT ROAD N.E. SUITE 200  
ATLANTA, GEORGIA 30305-1565  
404-237-2000 FAX: 404-237-0276

© 2008 COOPER CARRY INC.

PROJECT		WASHINGTON D.C. MARRIOTT MARQUIS	
TITLE			
L STREET STREET VIGNETTE 1			
SCALE	DATE	REFERENCES	PROJECT NO.
Author	12-22-2008		207202 3058-000

DWG NO  
PUD 370  
A-511



POST HEARING SUBMISSION



THE COOPER CARRY - TVS  
COLLABORATIVE  
3520 PIEDMONT ROAD N.E. SUITE 200  
ATLANTA, GEORGIA 30305-1595  
404-237-2000 FAX: 404-237-0278

© 2008 COOPER CARRY INC.

PROJECT	WASHINGTON D.C. MARRIOTT MARQUIS		
TITLE	L STREET STREET VIGNETTE 2		
SCALE	DATE	REFERENCES	PROJECT NO.
Author	12-22-2008		207202 3058-000

DWG NO.	PUD 370
	A-512



POST HEARING SUBMISSION



THE COOPER CARRY - TVS  
COLLABORATIVE  
3520 PIEDMONT ROAD N.E. SUITE 200  
ATLANTA, GEORGIA 30395-1505  
404-237-2000 FAX: 404-237-0276

PROJECT	WASHINGTON D.C. MARRIOTT MARQUIS		
TITLE	CONVENTION CENTER UPPER LEVEL CONNECTOR RENDERING		
SCALE	DATE	REFERENCES	PROJECT NO.
Author	12-22-2008		307302 3058-000

DWG NO.  
PUD 370  
A-513

© 2008 COOPER CARRY INC.



POST HEARING SUBMISSION



THE COOPER CARRY - TVS  
COLLABORATIVE

3520 PIEDMONT ROAD N.E. SUITE 200  
ATLANTA, GEORGIA 30305-1595  
404-237-2000 FAX: 404-237-0276

© 2008 COOPER CARRY INC.

PROJECT		WASHINGTON D.C. MARRIOTT MARQUIS	
TITLE			
MASS AND 9TH STREET LEVEL RENDERING - NIGHT			
SCALE	DATE	REFERENCES	PROJECT NO.
	12-22-2008		207202 3058-000

DWG NO.  
PUD 370  
A-515A



POST HEARING SUBMISSION



THE COOPER CARRY - TVS  
COLLABORATIVE  
3520 PIEDMONT ROAD N.E. SUITE 200  
ATLANTA, GEORGIA 30305-1595  
404-237-2000 FAX: 404-237-0278

© 2008 COOPER CARRY INC.

PROJECT				WASHINGTON D.C. MARRIOTT MARQUIS	
TITLE					
MASS AND 9TH STREET LEVEL RENDERING - DAY					
SCALE	DATE	REFERENCES	PROJECT NO.		
	12-22-2008		207202 3058-000		

DWG NO.  
PUD 370  
A-515B



POST HEARING SUBMISSION



<p>THE COOPER CARRY - TVS COLLABORATIVE</p> <p>3020 PIEDMONT ROAD N.E. SUITE 200 ATLANTA, GEORGIA 30305-1595 404-237-2000 FAX: 404-237-0276</p>		<table border="1"> <tr> <td colspan="2">PROJECT</td> <td colspan="2">WASHINGTON D.C. MARRIOTT MARQUIS</td> </tr> <tr> <td colspan="4">TITLE</td> </tr> <tr> <td colspan="4">9TH AND L STREET LEVEL RENDERING</td> </tr> <tr> <td>SCALE</td> <td>DATE</td> <td>REFERENCES</td> <td>PROJECT NO.</td> </tr> <tr> <td></td> <td>12-22-2008</td> <td></td> <td>207302 3058-000</td> </tr> </table>	PROJECT		WASHINGTON D.C. MARRIOTT MARQUIS		TITLE				9TH AND L STREET LEVEL RENDERING				SCALE	DATE	REFERENCES	PROJECT NO.		12-22-2008		207302 3058-000
PROJECT		WASHINGTON D.C. MARRIOTT MARQUIS																				
TITLE																						
9TH AND L STREET LEVEL RENDERING																						
SCALE	DATE	REFERENCES	PROJECT NO.																			
	12-22-2008		207302 3058-000																			

DWG NO.	PUD 370
	A-516

© 2008 COOPER CARRY INC.



POST HEARING SUBMISSION



THE COOPER CARRY - TVS  
COLLABORATIVE  
3520 PIEDMONT ROAD N.E. SUITE 200  
ATLANTA, GEORGIA 30305-1395  
404-237-2000 FAX: 404-237-0276

© 2008 COOPER CARRY INC.

PROJECT		WASHINGTON D.C. MARRIOTT MARQUIS	
TITLE			
L AND 10TH STREET LEVEL RENDERING			
SCALE	DATE	REFERENCES	PROJECT NO.
	12-22-2008		207202 3059-000

DWG NO.  
PUD 370  
A-517



POST HEARING SUBMISSION



THE COOPER CARRY - TVS  
COLLABORATIVE

3520 PIEDMONT ROAD N.E. SUITE 200  
ATLANTA, GEORGIA 30305-1995  
404-237-2000 FAX: 404-237-0278

© 2008 COOPER CARRY INC.

PROJECT				WASHINGTON D.C. MARRIOTT MARQUIS	
TITLE					
MASS AND 9TH STREET AERIAL RENDERING					
SCALE	DATE	REFERENCES	PROJECT NO.		
	12-22-2008		207202		
			3058-000		

DWG NO.  
PUD 370  
A-518