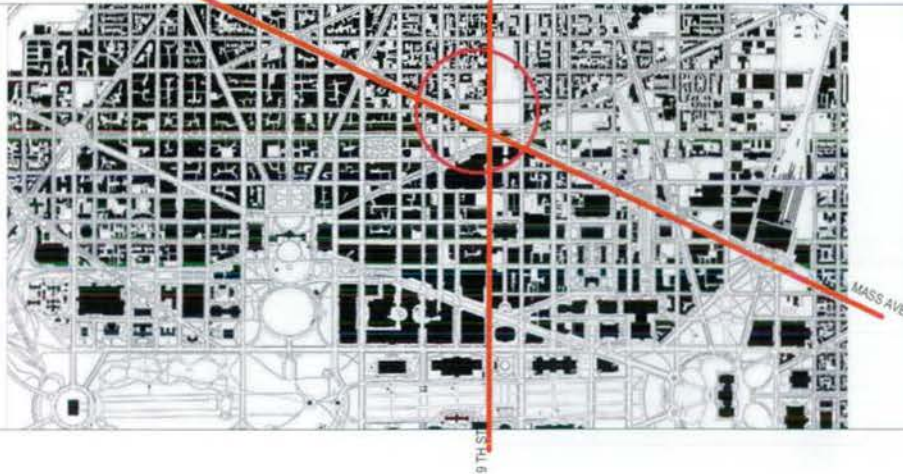


WASHINGTON D.C. MARRIOTT MARQUIS



SITE MAP



DRAWING INDEX

RECEIVED
D.C. OFFICE OF ZONING
2008 AUG -8 PM 3:22

PUD 370 SUBMISSION INDEX - ARCHITECTURAL		
SHEET NO.	DRAWING NAME	SHEET ISSUE DATE
A-001	COVER SHEET	08/08/2008
A-002	SITE CONTEXT	08/08/2008
A-003	PUBLIC BENEFITS	08/08/2008
A-004	ZONING TABULATION / SECTION	08/08/2008
A-101	CONTEXT MAP	08/08/2008
A-102	PLAN VIEW - SITE PLAN OF 370 BLOCK	08/08/2008
A-103	PLAN VIEW - MASS. AVE. ENTRANCE	08/08/2008
A-104	PLAN VIEW - MASS AVE. & 10TH ST.	08/07/08
A-105	SECTION VIEW OF MASS. AVE.	08/08/2008
A-106	SECTION VIEWS OF MASS. AVE.	08/06/08
A-107	SECTION VIEW OF MASS. AVE.	08/08/2008
A-108	PLAN VIEW - L ST.	08/08/2008
A-109	SECTION VIEWS OF L ST.	08/08/2008
A-110	PLAN VIEW - 9TH ST.	08/06/08
A-111	SECTION VIEW OF 9TH ST.	08/06/08
A-112	PLANTS	08/08/2008
A-113	PAVING MATERIALS	08/06/08
A-114	SITE FURNISHINGS	08/08/2008
A-201	FLOOR PLAN - LEVEL S1 PARKING - VALET SCENARIO (1-16'-6")	08/08/2008
A-202	FLOOR PLAN - LEVEL S2 PARKING - VALET SCENARIO (1-7'-0")	08/08/2008
A-203	FLOOR PLAN - LEVEL S3 JUNIOR BALLROOMS (4'-0")	08/08/2008
A-204	FLOOR PLAN - LEVEL S4 JUNIOR BALLROOMS MEZZANINE (19'-0")	08/08/2008
A-205	FLOOR PLAN - LEVEL S5 BALLROOM (34'-0")	08/08/2008
A-206	FLOOR PLAN - LEVEL S6 BALLROOM MEZZANINE (48'-0")	08/08/2008
A-207	FLOOR PLAN - LEVEL S7 HOTEL ADMINISTRATION (65'-0")	08/08/2008
A-208	FLOOR PLAN - LEVEL 1 LOBBY (73'-0")	08/08/2008
A-209	FLOOR PLAN - LEVEL 2 CONFERENCE (80'-0")	08/08/2008
A-210	FLOOR PLAN - LEVEL 3 HOSPITALITY SUITE (101'-8")	08/08/2008
A-211	FLOOR PLAN - LEVEL 4 AMENITY (110'-4")	08/08/2008
A-212	FLOOR PLAN - LEVEL 5 GUESTROOM (119'-0")	08/08/2008
A-213	FLOOR PLAN - LEVEL 6-9 TYP GUESTROOMS (127'-8" - 153'-8")	08/08/2008
A-214	FLOOR PLAN - LEVEL 10 GUESTROOM (162'-4")	08/08/2008
A-215	FLOOR PLAN - LEVEL 11 GUESTROOM (171'-0")	08/08/2008
A-216	FLOOR PLAN - LEVEL 12 GUESTROOM (179'-8")	08/08/2008
A-217	FLOOR PLAN - LEVEL 13 GUESTROOM (188'-4")	08/08/2008
A-218	FLOOR PLAN - LEVEL 14 GUESTROOM (197'-0")	08/08/2008
A-219	FLOOR PLAN - LEVEL 15 MECHANICAL PENTHOUSE (205'-8")	08/08/2008
A-220	ROOF PLAN (225'-0")	08/08/2008
A-301	BUILDING ELEVATIONS - MASS. AVE.	08/08/2008
A-302	BUILDING ELEVATIONS - 9TH STREET	08/08/2008
A-303	BUILDING ELEVATION - L STREET	08/08/2008
A-401	BUILDING SECTIONS - NS	08/08/2008
A-402	BUILDING SECTION - EW	08/08/2008
A-501	STREET LEVEL ELEVATION VIGNETTES	08/08/2008
A-502	STREET LEVEL ELEVATION VIGNETTES	08/08/2008
A-503	PERSPECTIVE VIEW	08/08/2008
A-504	PERSPECTIVE VIEW	08/06/08
A-505	PERSPECTIVE VIEW	08/08/2008
A-506	PERSPECTIVE VIEW	08/06/08
A-601	CIRCULATION PLAN	08/08/2008
C-1.0	COVER SHEET	08/08/2008
C-1.1	CONTEXT PLAN	08/08/2008
C-1.2	EXISTING CONDITIONS PLAN	08/08/2008
C-2.0	SITE PLAN	08/08/2008
C-2.1	SITE UTILITY AND STORM DRAINS/SWM PLAN	08/08/2008
C-2.2	EROSION & SEDIMENT CONTROL PLAN	08/08/2008
C-2.3	EROSION & SEDIMENT CONTROL DETAILS	08/08/2008

ZONING COMMISSION
District of Columbia

CASE NO. 08-13

EXHIBIT NO. 18

SECOND SUBMISSION



THE COOPER CARRY - TVS
COLLABORATIVE
2700 PROMENADE TWO
1230 PEACHTREE STREET N.E.
ATLANTA, GEORGIA 30309-3581
404-886-6600 FAX: 404-888-6700

© COOPER CARRY INC.

PROJECT WASHINGTON D.C. MARRIOTT MARQUIS

TITLE COVER SHEET

SCALE NTS

DATE 08-08-2008

REFERENCES

ZONING COMMISSION
District of Columbia
CASE NO. 08-13
EXHIBIT NO. 18

DWG NO

PUD 370

A-001



SECOND SUBMISSION



THE COOPER CARRY - TVS
COLLABORATIVE
2700 PROMENADE TWO
1230 PEACHTREE STREET N.E.
ATLANTA, GEORGIA 30309-3291
404-888-6800 FAX: 404-888-6700

© COOPER CARRY INC.

PROJECT	WASHINGTON D.C. MARRIOTT MARQUIS		
TITLE	SITE CONTEXT		
SCALE	DATE	REFERENCES	PROJECT NO.
NTS	08-08-2008		207202 3058-000

DWS NO.
PUD 370
A-002

URBAN DESIGN

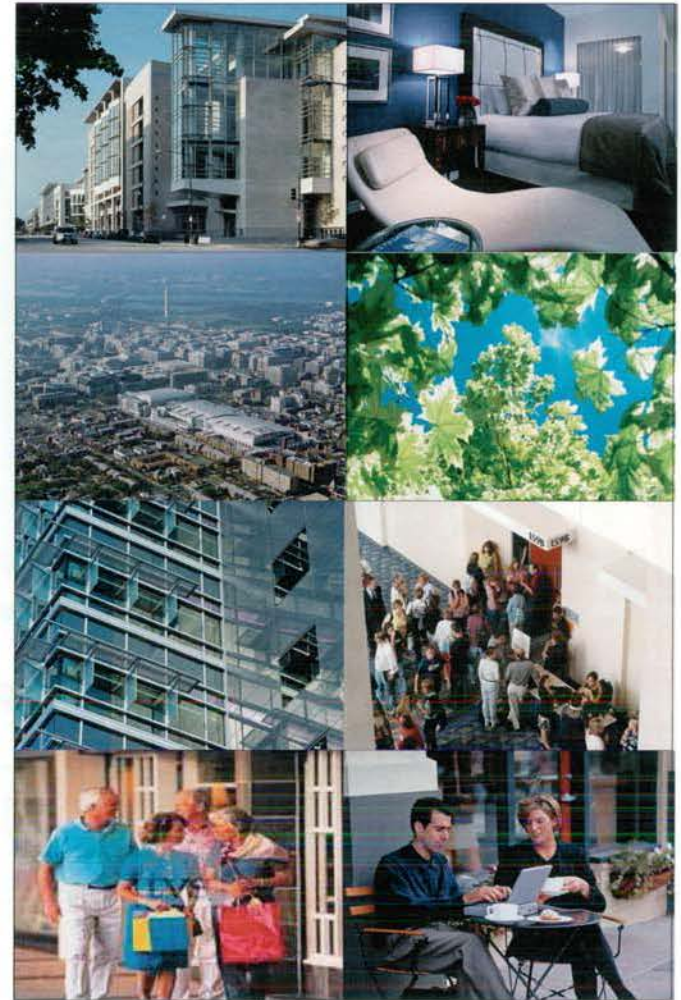
- Proposed project will have streetscape animated by outdoor seating areas associated with food and beverage outlets.
- Hotel's proximity to the Convention Center will increase pedestrian arrival at Convention Center events.
- Appropriately welcoming public entries will address civic and neighborhood scales on all sides.
- Bus arrival and taxi queuing is planned for L street entrance rather than the congested 9th Street or Massachusetts Avenue.
- The loading dock and truck service to the project is located below grade and off the street.
- High quality exterior materials (stone, glass, etc) will enhance the urban building fabric.
- The hotel will "mask" the existing PEPCO substation from Massachusetts Avenue.

PUBLIC SPACE / LANDSCAPE

- Project plans 3 separate publicly-accessible retail outlets and restaurants at the perimeter of the ground floor.
- High quality hardscape materials and patterns will enhance the streetscape.
- Design will endeavor to maximize tree planting within DC guidelines.
- Street lighting and street furniture will be optimized within DC guidelines.

ARCHITECTURE

- This hotel will be one of three Marriott Marquis properties in the world, providing over 1100 guestrooms in support of the Convention Center.
- Hotel will provide community-accessible meeting and assembly venues, totalling over 100,000 square feet.
- Hotel will reflect an appropriate level of modernity while respecting Washington architectural traditions and the L'Enfant planning parameters.
- Hotel grand lobby is being modeled after the traditional Washington DC grand hotel lobby spaces.
- In order to be a sustainable neighbor, the hotel will achieve LEED silver certification.
- The hotel will convert the existing Plumbers Union building to be a "boutique" hotel within the larger Marquis hotel product.
- Exterior materials at street level will have an appropriate human scale.
- Large building facades will be articulated to break up the scale, responding to the facades specific immediate context.
- Large building facades will incorporate layering, solar shading and material scale interaction to control building massing.
- Substantial glass exposure at street level coupled with sumptuous interior finishes and a high level of activity will animate the street.



SECOND SUBMISSION



THE COOPER CARRY - TVS
COLLABORATIVE
2700 PROMENADE TWO
1230 PEACHTREE STREET N.E.
ATLANTA, GEORGIA 30320-3501
404-888-8620 FAX: 404-888-8700

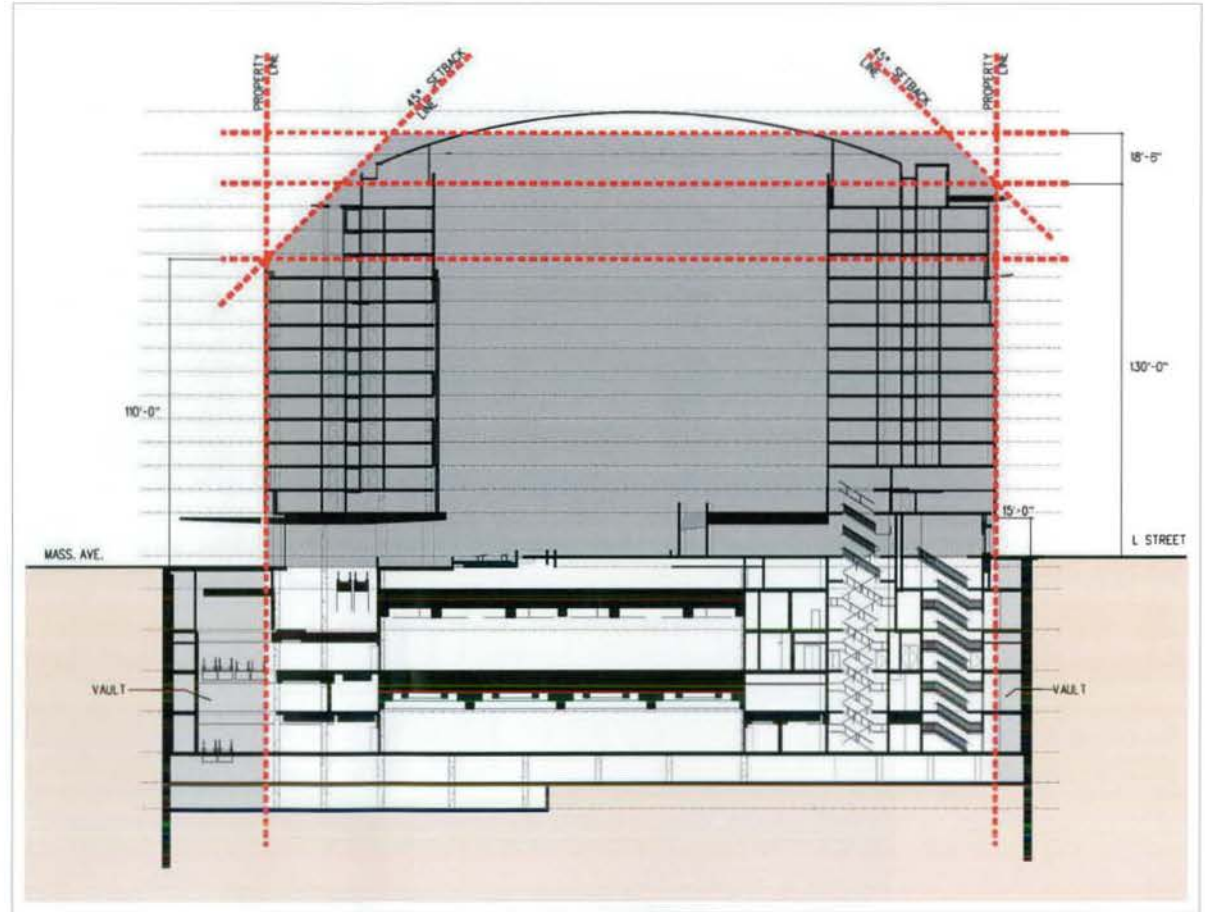
© COOPER CARRY INC.

PROJECT	WASHINGTON D.C. MARRIOTT MARQUIS		
TITLE	PUBLIC BENEFITS		
SCALE	DATE	REFERENCES	PROJECT NO.
Author	08-08-2008		207202 3058-000

DWG NO.
PUD 370
A-003

ZONING TABULATION

	PROVIDED	REQUIRED / MAXIMUM
ZONING DISTRICT:	DD / C-3-C	
SITE AREA:	82,888 sf	
REAR YARD:	45'-0"	27'-1" REQUIRED
SIDE YARD	EAST: 0 WEST: 0	EAST: 0 WEST: 0
STAGE 2 PLUD SUBMISSION: Total Proposed Site Development		
FAR:	Building: 9.234 Mechanical: 0.268	Building: 9.5 Mechanical: 0.37
GROSS FLOOR AREA:	751,832 sf	
HEIGHT:	Total Building Height: 130'-0" above 76.25' (L St. Mid-Block Elevation) Building Height at Mass Ave. (includes 1:1 Setback): 110'-0" Above 72.65' (Mass. Ave. Mid-Block Elevation)	130'-0" Above 76.25' 130'-0" With 45 Degree Setback From 110'-0" Above 72.65'
STORIES:	13 Guest Room Floors Above Public Lobby	
LOT OCCUPANCY:	100%	100%
PENTHOUSE HEIGHT:	18'-6" max Top of Atrium Roof	18'-6" max +165'-0" Above 72.65'
PENTHOUSE AREA:	22,242 sf	0.37 x 82,888 = 30,668 sf allowable
PARKING:	Valet Provided: 388 Spaces Self-Parking Without Valet: 264 Spaces	Zoning Minimum: 388 Spaces
LOADING:	3@55 ft 3@30 ft 1@20 ft	2@55 ft 2@30 ft 1@20 ft



ZONING SECTION

SECOND SUBMISSION



THE COOPER CARRY - TVS
COLLABORATIVE

2700 PROMENADE TWO
1230 PEACHTREE STREET N.E.
ATLANTA, GEORGIA 30309-3591
404-885-8600 FAX: 404-885-8700

© COOPER CARRY INC.

PROJECT	WASHINGTON D.C. MARRIOTT MARQUIS		
TITLE	ZONING TABULATION / SECTION		
SCALE	DATE	REFERENCES	PROJECT NO.
Author	08-08-2008		20702 3058-000

DWG NO
PUD 370
A-004

MARRIOTT MARQUIS - CONTEXT MAP



date:08.05.2008

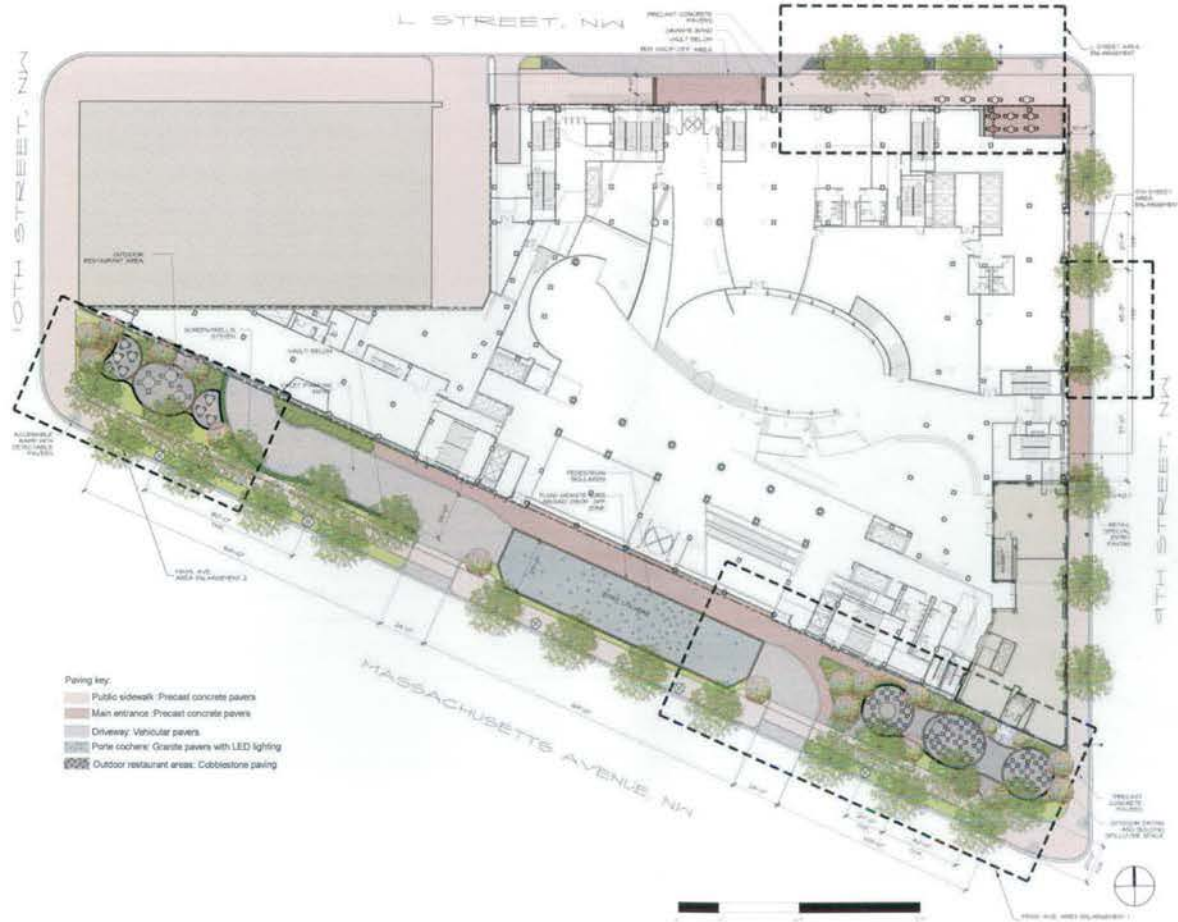
lee-papa and associates

SECOND SUBMISSION



THE COOPER CARRY - TVS COLLABORATIVE 2700 PROMENADE TWO 1200 PEACHTREE STREET N.E. ATLANTA, GEORGIA 30308-3591 404-868-0500 FAX 404-868-4101	PROJECT WASHINGTON D.C. MARRIOTT MARQUIS		DWG NO PUD 370 A-101
	TITLE CONTEXT MAP		
© COOPER CARRY INC	SCALE Author	DATE 08-08-2008	REFERENCES PROJECT NO. 30720 3058-000

MARRIOTT MARQUIS - PLAN VIEW



date:08.05.2008

NOTE:
 PLANT SPECIES SELECTIONS IDENTIFIED ON THIS PLAN ARE SHOWN TO ILLUSTRATE DESIGN INTENT ONLY.
 THE PURPOSE IS TO GENERALLY DEFINE PLANT SIZE, CHARACTER AND LOCATION. REFINEMENTS TO THE
 PLANTING DESIGN AND FINAL SELECTION OF ALL PLANT MATERIALS CONSISTENT WITH THE SPECIES SHOWN
 SHALL BE DEVELOPED DURING DETAILED DESIGN PHASE OF THE WORK.

lee.papa.associates

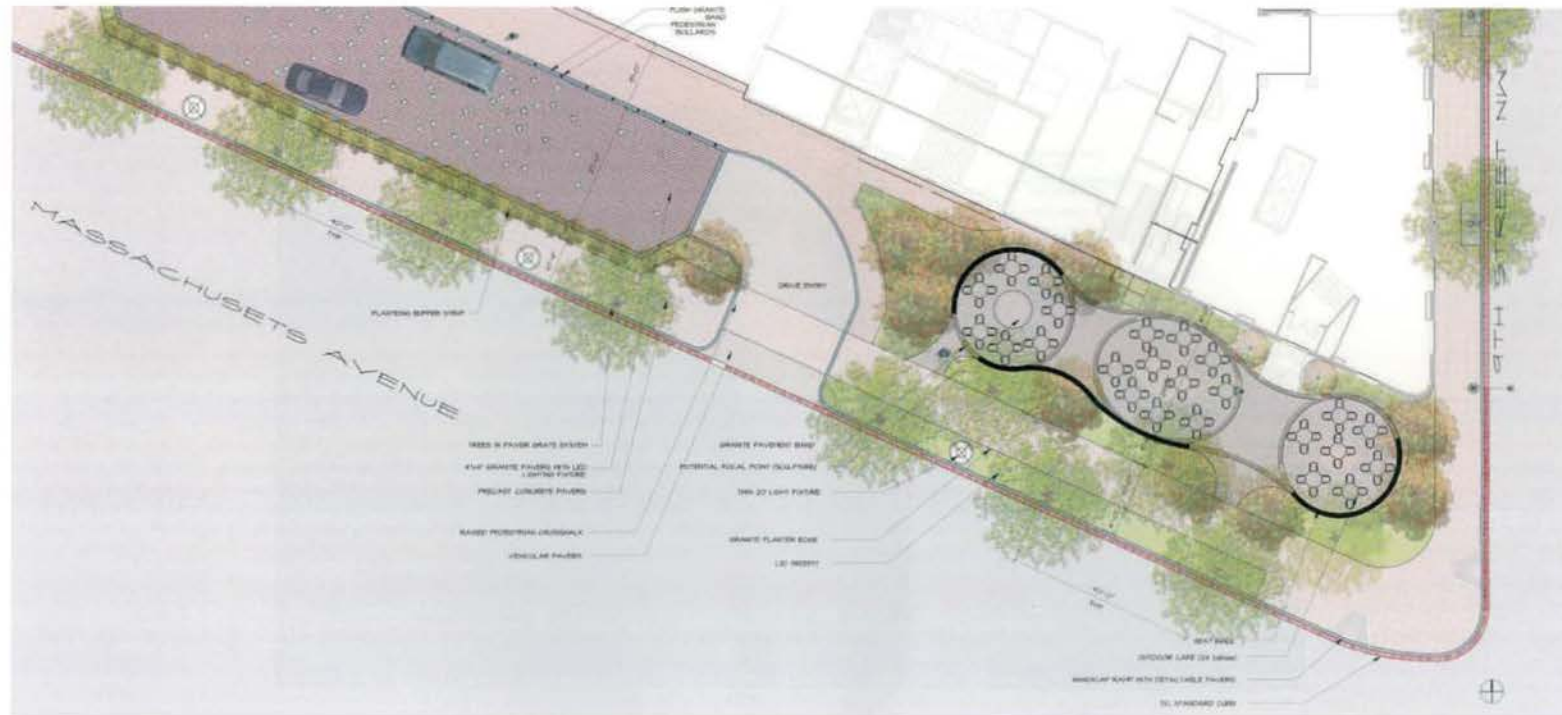
SECOND SUBMISSION



THE COOPER CARRY - TVS COLLABORATIVE 2700 PROMENADE TWO 1230 PEACHTREE STREET N.E. ATLANTA, GEORGIA 30309-3581 404-888-6600 FAX: 404-888-6700		PROJECT WASHINGTON D.C. MARRIOTT MARQUIS	
© COOPER CARRY INC.		TITLE PLAN VIEW - SITE PLAN OF 370 BLOCK	
SCALE	DATE	REFERENCES	PROJECT NO.
Author	08-08-2008		207202 3056-000

DWG NO
PUD 370
A-102

MARRIOTT MARQUIS - PLAN ENLARGEMENT MASSACHUSETTS AVE. (1)



date:08.05.2008

NOTE:

PLANT SPECIES SELECTIONS IDENTIFIED ON THIS PLAN ARE SHOWN TO ILLUSTRATE DESIGN INTENT ONLY. THE PURPOSE IS TO GENERALLY DEFINE PLANT SIZE, CHARACTER AND LOCATION. REFINEMENTS TO THE PLANTING DESIGN AND FINAL SELECTION OF ALL PLANT MATERIALS CONSISTENT WITH THE SPECIES SHOWN SHALL BE DEVELOPED DURING DETAILED DESIGN PHASE OF THE WORK.

lee+papa+associates

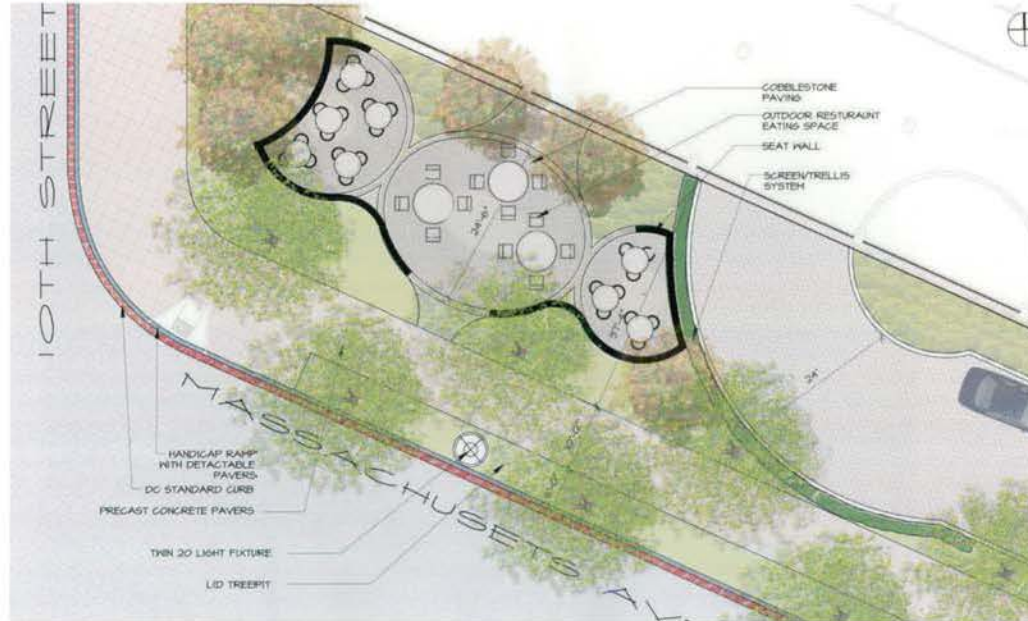
SECOND SUBMISSION



THE COOPER CARRY - TVS COLLABORATIVE 2700 PROMENADE TWO 1230 PEACHTREE STREET N.E. ATLANTA, GEORGIA 30309-3091 404-888-6600 FAX 404-888-6700	PROJECT WASHINGTON D.C. MARRIOTT MARQUIS	
	TITLE PLAN VIEW - MASS. AVE. ENTRANCE	
SCALE Author	DATE 08-08-2008	REFERENCES
© COOPER CARRY INC.	PROJECT NO. 207202 3056.000	

DWG NO.
PUD 370
A-103

MARRIOTT MARQUIS - PLAN ENLARGEMENT MASSACHUSETTS AVE. (2)



date:08.05.2008

lee.papaandassociates

SECOND SUBMISSION



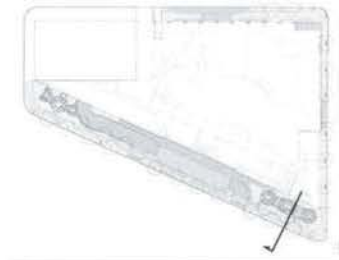
THE COOPER CARRY - TVS
COLLABORATIVE
2700 PROMENADE TWO
1200 PEACHTREE STREET N.E.
ATLANTA, GEORGIA 30309-3591
404-888-6800 FAX: 404-888-6700

© COOPER CARRY INC.

PROJECT	WASHINGTON D.C. MARRIOTT MARQUIS		
TITLE	PLAN VIEW - MASS AVE. & 10TH ST.		
SCALE	DATE	REFERENCES	PROJECT NO.
Author	08-08-2008		207202 3058-000

DWG NO.
PUD 370
A-104

MARRIOTT MARQUIS - SECTION VIEW OF MASSACHUSETTS AVE



section location



date:08.05.2008

lee.papa and associates

SECOND SUBMISSION



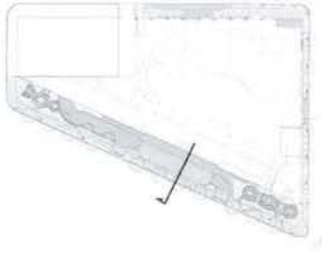
THE COOPER CARRY - TVS
COLLABORATIVE
2700 PROMENADE TWO
1230 PEACHTREE STREET N.E.
ATLANTA, GEORGIA 30309-3091
404-886-6600 FAX 404-886-6700

© COOPER CARRY INC.

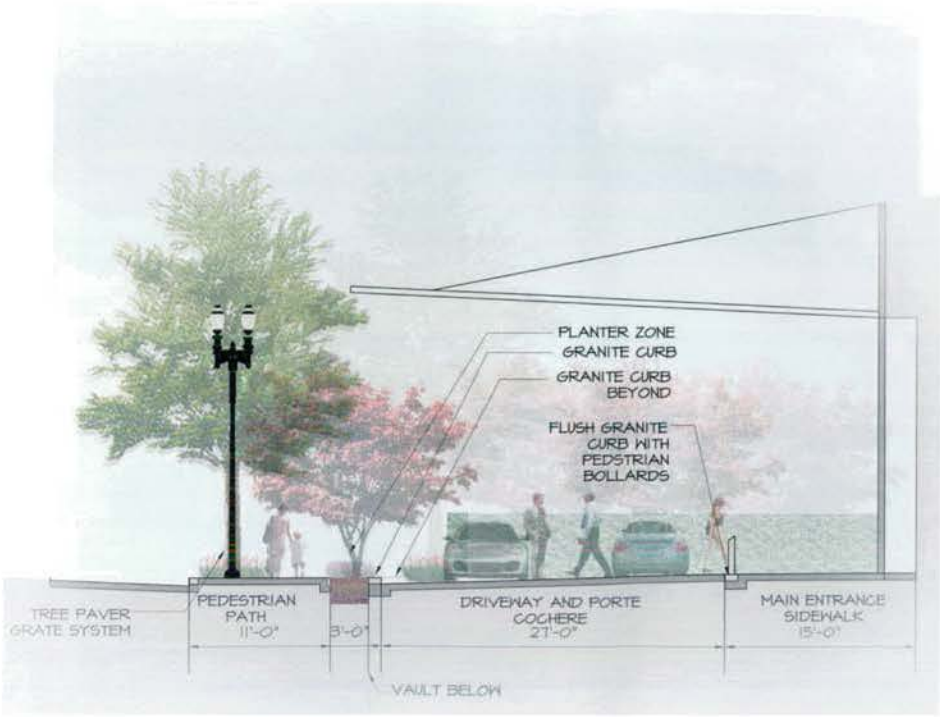
PROJECT				WASHINGTON D.C. MARRIOTT MARQUIS	
TITLE					
SECTION VIEW OF MASS. AVE.					
SCALE	DATE	REFERENCES	PROJECT NO.		
Author	08-08-2008		207202 3058-000		

DWG NO	PUD 370
	A-105

MARRIOTT MARQUIS - SECTION VIEW OF MASSACHUSETTS AVE



section location



date:08.05.2008

lee-papa and associates

SECOND SUBMISSION



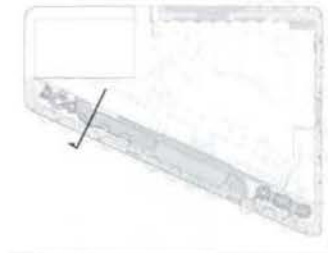
THE COOPER CARRY - TVS COLLABORATIVE
 2700 PROMENADE TWO
 1230 PEACHTREE STREET N.E.
 ATLANTA, GEORGIA 30308-3591
 404-888-6600 FAX: 404-888-6700

© COOPER CARRY INC

PROJECT WASHINGTON D.C. MARRIOTT MARQUIS			
TITLE SECTION VIEWS OF MASS. AVE.			
SCALE	DATE	REFERENCES	PROJECT NO.
Author	08-08-2008		207209 3056-000

DWG NO
 PUD 370
 A-106

MARRIOTT MARQUIS - SECTION VIEW OF MASSACHUSETTS AVE



section location



date:08.05.2008

lee.papa.associates

SECOND SUBMISSION



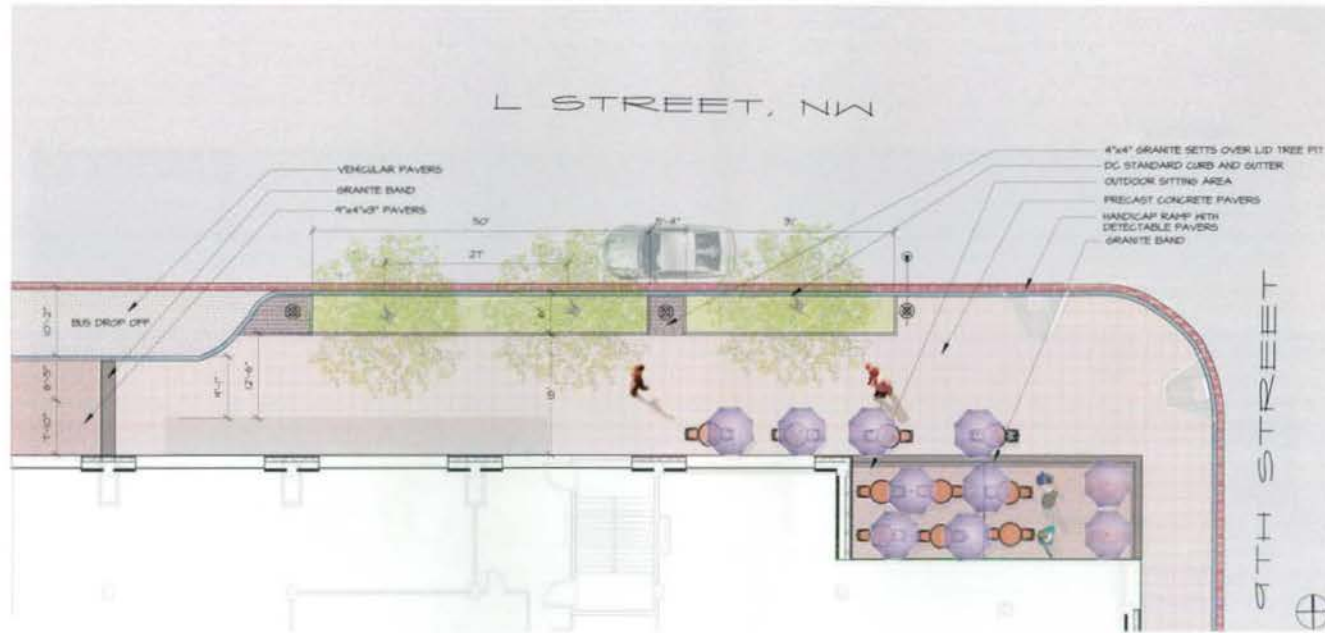
THE COOPER CARRY - TVS
COLLABORATIVE
3700 PROMENADE TWO
1200 PEACHTREE STREET N.E.
ATLANTA, GEORGIA 30309-3091
404-888-6600 FAX 404-888-6700

© COOPER CARRY INC.

PROJECT WASHINGTON D.C. MARRIOTT MARQUIS			
TITLE SECTION VIEW OF MASS. AVE.			
SCALE Author	DATE 08-08-2008	REFERENCES	PROJECT NO. 20720 306-000

RWG NO PUD 370 A-107

MARRIOTT MARQUIS - PLAN ENLARGEMENT L STREET N.W.



date:08.05.2008

NOTE:

PLANT SPECIES SELECTIONS IDENTIFIED ON THIS PLAN ARE SHOWN TO ILLUSTRATE DESIGN INTENT ONLY. THE PURPOSE IS TO GENERALLY DEFINE PLANT SIZE, CHARACTER AND LOCATION. REFINEMENTS TO THE PLANTING DESIGN AND FINAL SELECTION OF ALL PLANT MATERIALS CONSISTENT WITH THE SPECIES SHOWN SHALL BE DEVELOPED DURING DETAILED DESIGN PHASE OF THE WORK.

lee.papaandassociates

SECOND SUBMISSION



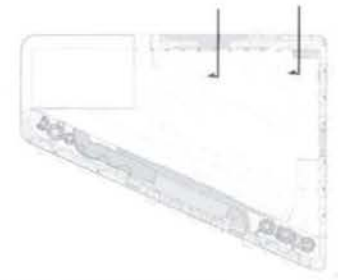
THE COOPER CARRY - TVS
COLLABORATIVE
2700 PROMENADE TWO
1230 PEACHTREE STREET N.E.
ATLANTA, GEORGIA 30309-3391
404-888-6600 FAX: 404-888-4700

© COOPER CARRY INC.

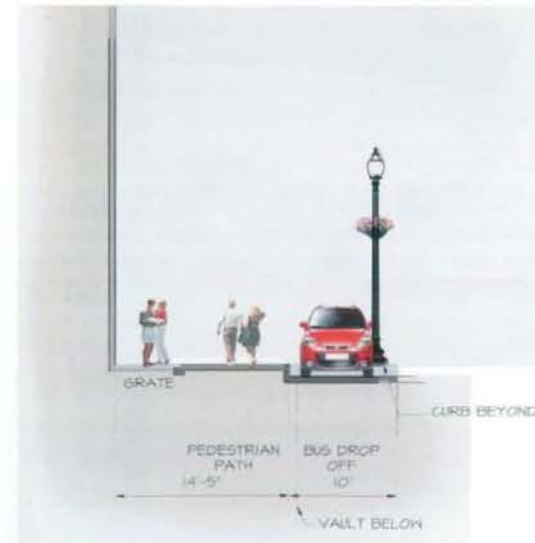
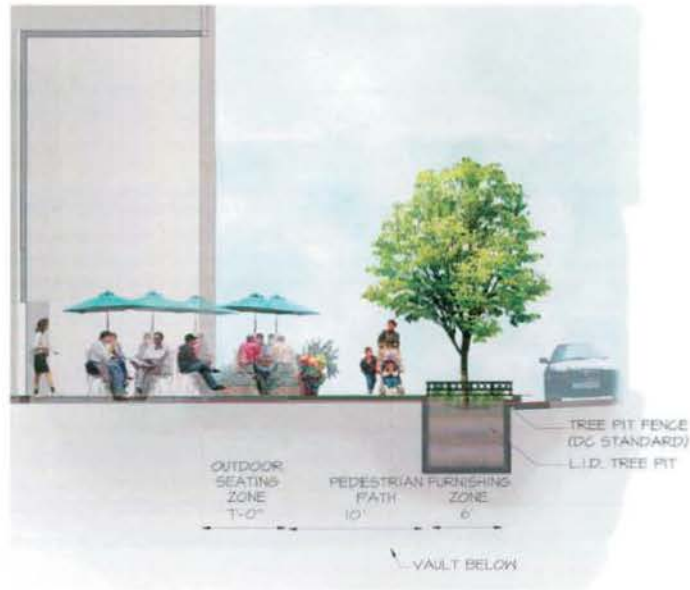
PROJECT WASHINGTON D.C. MARRIOTT MARQUIS			
TITLE PLAN VIEW - L ST.			
SCALE	DATE	REFERENCES	PROJECT NO.
Author	08-08-2008		207202 2058-000

DWG NO.
PUD 370
A-108

MARRIOTT MARQUIS - SECTION VIEW OF L STREET NW



section location



date:08.05.2008

lee-papandassociates

SECOND SUBMISSION



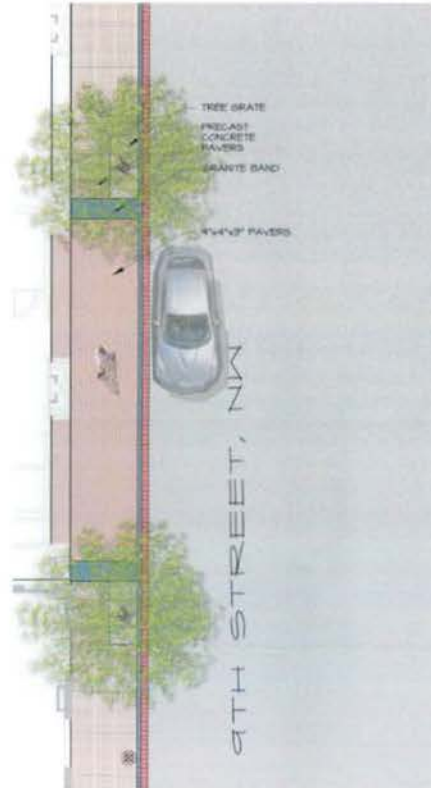
THE COOPER CARRY - TVS
COLLABORATIVE
2705 PROMENADE TWO
1230 PEACHTREE STREET N.E.
ATLANTA, GEORGIA 30309-3591
404-888-6600 FAX 404-888-6702

© COOPER CARRY INC.

PROJECT	WASHINGTON D.C. MARRIOTT MARQUIS		
TITLE	SECTION VIEWS OF L ST.		
SCALE	DATE	REFERENCES	PROJECT NO.
Author	08-08-2008		20702 2058-000

DWG NO.	PUD 370
	A-109

MARRIOTT MARQUIS - PLAN ENLARGEMENT 9TH STREET N.W.



date:08.05.2008

lee-papa and associates

SECOND SUBMISSION



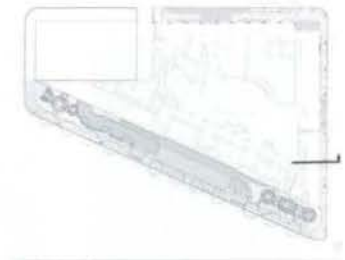
THE COOPER CARRY - tvs
COLLABORATIVE
2700 PROMENADE TWO
1230 PEACHTREE STREET N.E.
ATLANTA, GEORGIA 30309-3581
404-888-6000 FAX: 404-888-6700

© COOPER CARRY INC.

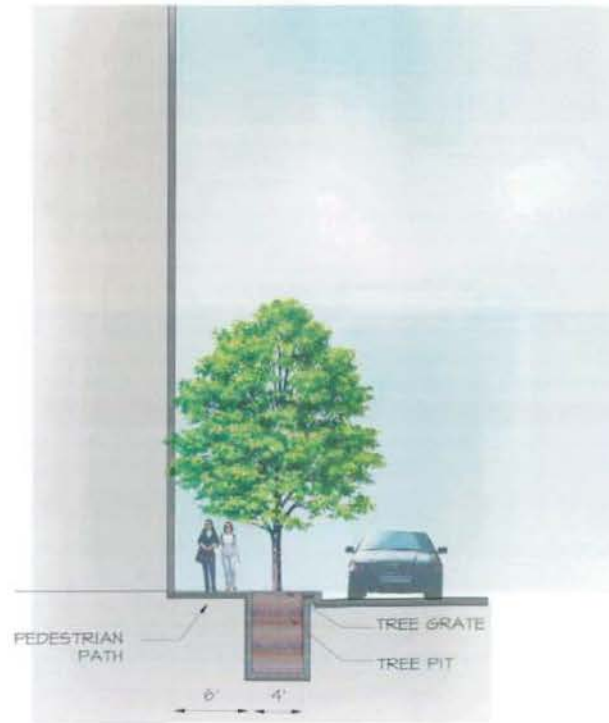
PROJECT				WASHINGTON D.C. MARRIOTT MARQUIS	
TITLE				PLAN VIEW - 9TH ST.	
SCALE	DATE	REFERENCES	PROJECT NO.		
Author	08-08-2008		20720 308-000		

DWG NO.	PUD 370
	A-110

MARRIOTT MARQUIS - SECTION VIEW OF 9TH STREET NW



section location



date:08.05.2008

lee-papa and associates

SECOND SUBMISSION



THE COOPER CARRY - TVS
COLLABORATIVE
2700 PROMENADE TWO
1230 PEACHTREE STREET N.E.
ATLANTA, GEORGIA 30309-3591
404-888-6500 FAX: 404-888-6700

© COOPER CARRY INC.

PROJECT				WASHINGTON D.C. MARRIOTT MARQUIS	
TITLE				SECTION VIEW OF 9TH ST.	
SCALE	DATE	REFERENCES	PROJECT NO.		
Author	08-08-2008		20752 3058-000		

DWG NO.
PUD 370
A-111

MARRIOTT MARQUIS - PLANTS

STREET TREES:



9th Street -
Quercus coccinea,
Scarlet Oak



L Street -
Platanus acerifolia
'Bloodgood',
Bloodgood London
Planetree



Massachusetts Avenue -
Tilia tomentosa,
Silver Linden

ACCENT FLOWERING TREES:



Lagerstroemia x indica,
Crepe Myrtle



Prunus 'Okame',
Okame Cherry



Magnolia stellata 'Galaxy',
Galaxy Magnolia

TREE PITS:



Continuous Tree Pit
for L Street and Mass.
Ave



Tree Pit Planting at Marquis
Mass Ave. Entry



Tree Pit Grates for
9th Street

ACCENT PLANTING:



date:08.05.2008

lee.papa and associates

SECOND SUBMISSION



THE COOPER CARRY - tvs
COLLABORATIVE
2755 PROMENADE TWO
1230 PEACHTREE STREET N.E.
ATLANTA, GEORGIA 30309-3591
404-888-6800 FAX: 404-888-6700

© COOPER CARRY INC.

PROJECT				WASHINGTON D.C. MARRIOTT MARQUIS			
TITLE							
PLANTS							
SCALE	DATE	REFERENCES	PROJECT NO.				
Author	08-08-2008		207292 3058-000				

DWG NO:
PUD 370
A-112

MARRIOTT MARQUIS - PAVING MATERIALS

Public Sidewalk



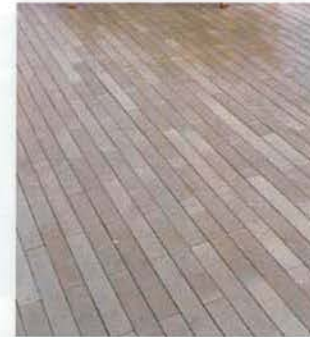
Precast concrete pavers

Driveway



Vehicular pavers

Main Entrance and Outdoor Restaurant Area



Narrow Concrete Paver- 24" x 3" x 4"

L.I.D Zone



Granite Sets- (4' x 4' x 4")

Porte Cochere



LED Lighting in Granit sets

Pavement band



Granite

date:08.05.2008

lee-papa and associates

SECOND SUBMISSION



THE COOPER CARRY - TVS
COLLABORATIVE
2700 PROMENADE TWO
1230 PEACHTREE STREET N.E.
ATLANTA, GEORGIA 30308-3681
404-888-6500 FAX: 404-888-6700

© COOPER CARRY, INC.

PROJECT				WASHINGTON D.C. MARRIOTT MARQUIS	
TITLE					
PAVING MATERIALS					
SCALE	DATE	REFERENCES	PROJECT NO.		
Author	08-08-2008		207202		
			3058-000		

DWG NO.
PUD 370
A-113



Traditional Bench



Trash Receptacle



Bike Rack



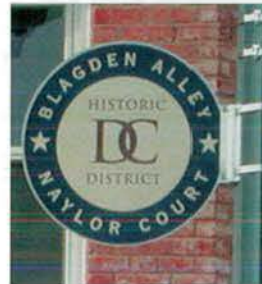
Newspaper Corral



Multi-bay Parking Meter



Bollards



Historic Signage



Single Washington Globe



Teardrop Light



Double Washington Globe

date:08.05.2008

lee papa and associates

SECOND SUBMISSION

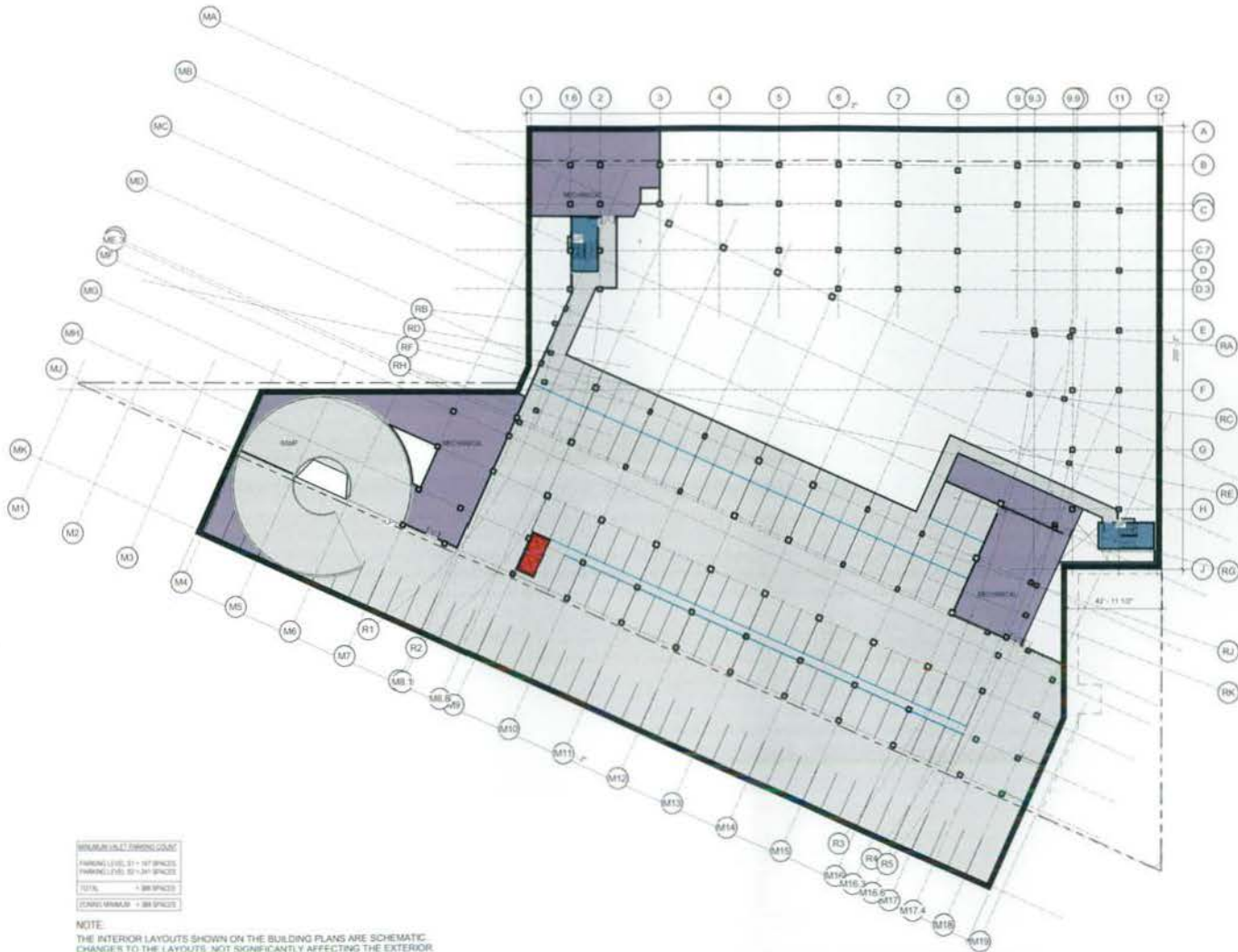


THE COOPER CARRY - TVS
COLLABORATIVE
2700 PROMENADE TWO
1230 PEACHTREE STREET N.E.
ATLANTA, GEORGIA 30309-3501
404-888-6500 FAX: 404-888-6700

© COOPER CARRY INC.

PROJECT				WASHINGTON D.C. MARRIOTT MARQUIS	
TITLE					
SITE FURNISHINGS					
SCALE	DATE	REFERENCES	PROJECT NO.		
Author	08-08-2008		207202		
			3058-000		

DWG NO:
PUD 370
A-114



- public circulation/lobby
- exhibit hall
- meeting room
- restaurant
- retail
- guestroom
- public circulation

- public restroom
- health club
- pool

- admin
- back of house
- back of house circulation
- service elevator/ exit stair
- mechanical

- terrace/ pavement
- loading dock
- road/ parking
- surrounding building
- patch/ shadow

- grass
- shrub / planter
- tall tree
- low tree
- site fountain
- lake/ ocean

MECHANICAL	3000 S.F.
PARKING LEVEL S1 - 10' SPACES	1000 S.F.
PARKING LEVEL S2 - 20' SPACES	2000 S.F.
TOTAL	3000 S.F.
GRAND TOTAL	3000 S.F.

NOTE:
THE INTERIOR LAYOUTS SHOWN ON THE BUILDING PLANS ARE SCHEMATIC. CHANGES TO THE LAYOUTS, NOT SIGNIFICANTLY AFFECTING THE EXTERIOR ENVELOPE OR THE FOOTAGE DISTRIBUTION, MAY OCCUR.

SECOND SUBMISSION

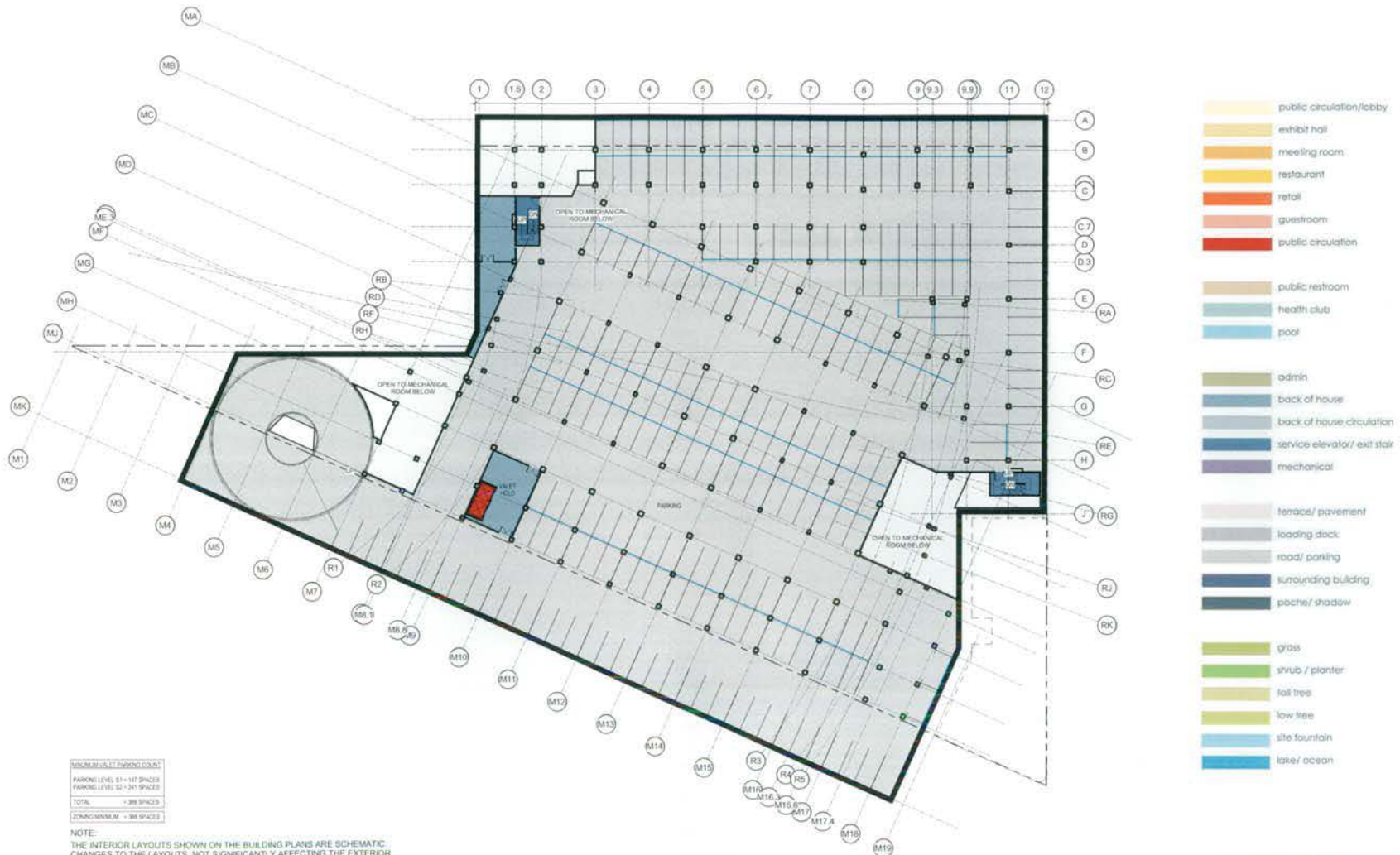


THE COOPER CARRY - tvs
COLLABORATIVE
2700 PROMENADE TWO
1030 PEACHTREE STREET N.E.
ATLANTA, GEORGIA 30309-3091
404-888-6600 FAX: 404-888-6700

© COOPER CARRY INC.

PROJECT WASHINGTON D.C. MARRIOTT MARQUIS			
TITLE FLOOR PLAN - LEVEL S1 PARKING - VALET SCENARIO (-16'-6")			
SCALE 1" = 50'-0"	DATE 08-08-2008	REFERENCES	PROJECT NO. 207202 3058-000

DWG. NO. PUD 370 A-201



SECOND SUBMISSION



THE COOPER CARRY - TVS COLLABORATIVE
 2700 PROMENADE TWO
 1230 PEACHTREE STREET N.E.
 ATLANTA, GEORGIA 30309-3591
 404-888-6900 FAX: 404-888-6700

© COOPER CARRY INC.

PROJECT WASHINGTON D.C. MARRIOTT MARQUIS			
TITLE FLOOR PLAN - LEVEL S2 PARKING - VALET SCENARIO (-7'-0")			
SCALE 1" = 50'-0"	DATE 08-08-2008	REFERENCES	PROJECT NO 207202 3056-000

DWG NO PUD 370 A-202



- public circulation/lobby
- exhibit hall
- meeting room
- restaurant
- retail
- guestroom
- public circulation

- public restroom
- health club
- pool

- admin
- back of house
- back of house circulation
- service elevator/ exit stair
- mechanical

- terrace/ pavement
- loading dock
- road/ parking
- surrounding building
- poche/ shadow

- grass
- shrub/ planter
- tall tree
- low tree
- site fountain
- lake/ ocean

NOTE:
 THE INTERIOR LAYOUTS SHOWN ON THE BUILDING PLANS ARE SCHEMATIC.
 CHANGES TO THE LAYOUTS, NOT SIGNIFICANTLY AFFECTING THE EXTERIOR
 ENVELOPE OR THE FOOTAGE DISTRIBUTION, MAY OCCUR.

SECOND SUBMISSION



THE COOPER CARRY - TVS
 COLLABORATIVE
 2700 PROMENADE TWO
 1230 PEACHTREE STREET N.E.
 ATLANTA, GEORGIA 30309-3591
 404-888-6600 FAX: 404-888-6700

© COOPER CARRY INC.

PROJECT	WASHINGTON D.C. MARRIOTT MARQUIS		
TITLE	FLOOR PLAN - LEVEL S3 JUNIOR BALLROOMS (4'-0")		
SCALE	DATE	REFERENCES	PROJECT NO.
1" = 50'-0"	08-08-2008		207203 3058-003

DWG NO.
PUD 370
A-203



- public circulation/lobby
- exhibit hall
- meeting room
- restaurant
- retail
- guestroom
- public circulation
- public restroom
- health club
- pool
- admin
- back of house
- back of house circulation
- service elevator/ exit stair
- mechanical
- terrace/ pavement
- loading dock
- road/ parking
- surrounding building
- poche/ shadow
- grass
- shrub / planter
- tall tree
- low tree
- site fountain
- lake/ ocean

NOTE:
 THE INTERIOR LAYOUTS SHOWN ON THE BUILDING PLANS ARE SCHEMATIC
 CHANGES TO THE LAYOUTS, NOT SIGNIFICANTLY AFFECTING THE EXTERIOR
 ENVELOPE OR THE FOOTAGE DISTRIBUTION, MAY OCCUR.

SECOND SUBMISSION

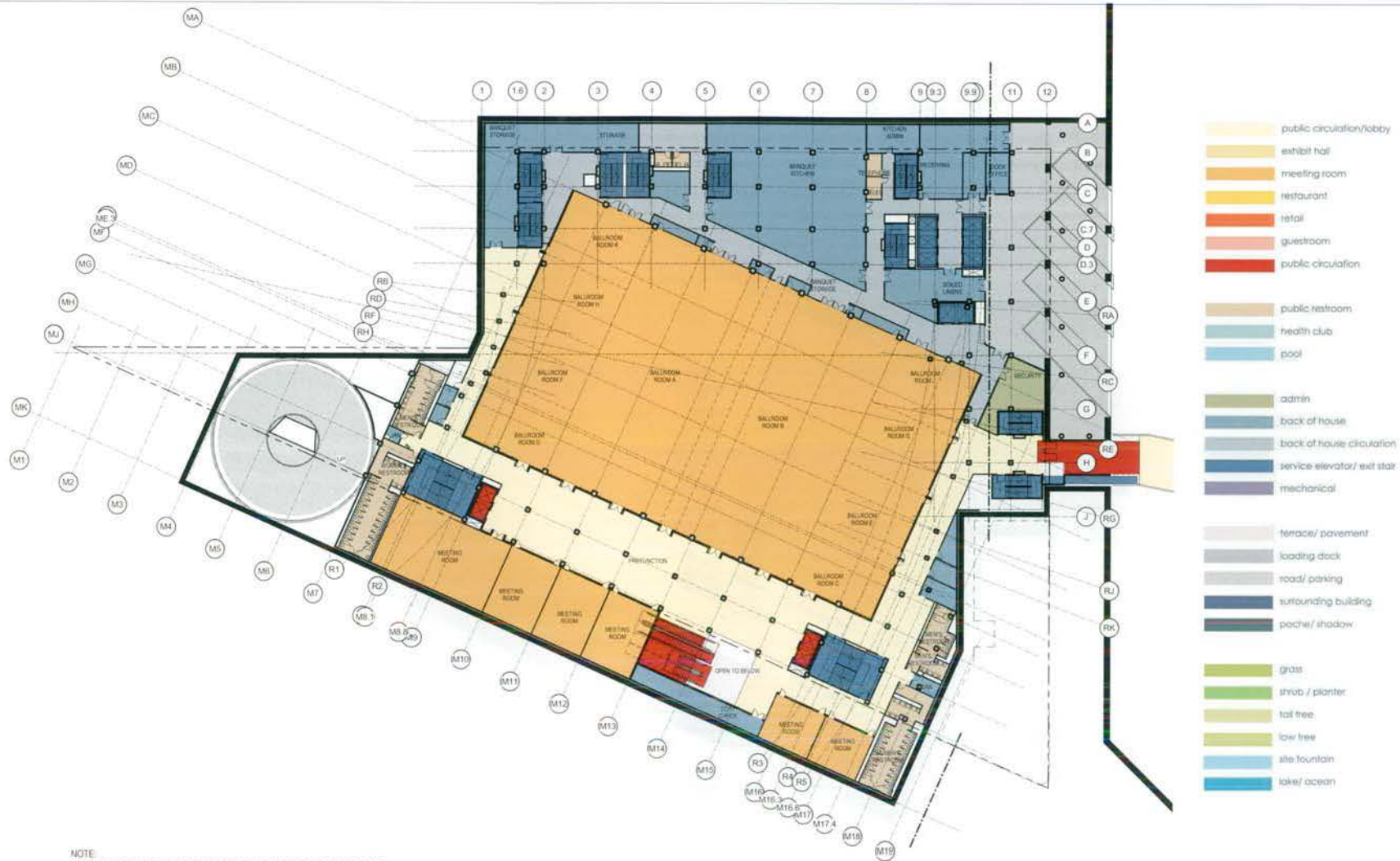


THE COOPER CARRY - TVS
 COLLABORATIVE
 2700 PROMENADE TWO
 1230 PEACHTREE STREET N.E.
 ATLANTA, GEORGIA 30309-3591
 404-888-6600 FAX: 404-888-6700

© COOPER CARRY INC.

PROJECT: WASHINGTON D.C. MARRIOTT MARQUIS			
TITLE: FLOOR PLAN - LEVEL S4 JUNIOR BALLROOMS MEZZANINE (19'-0")			
SCALE: 1" = 50'-0"	DATE: 08-08-2008	REFERENCES:	PROJECT NO: 20752-208-000

DWG NO: PUD 370 A-204



NOTE:
 THE INTERIOR LAYOUTS SHOWN ON THE BUILDING PLANS ARE SCHEMATIC.
 CHANGES TO THE LAYOUTS, NOT SIGNIFICANTLY AFFECTING THE EXTERIOR
 ENVELOPE OR THE FOOTAGE DISTRIBUTION, MAY OCCUR.

SECOND SUBMISSION



THE COOPER CARRY - tvs
 COLLABORATIVE
 2700 PROMENADE TWO
 1230 PEACHTREE STREET N.E.
 ATLANTA, GEORGIA 30308-3591
 404-888-9800 FAX: 404-888-8700

© COOPER CARRY INC.

PROJECT WASHINGTON D.C. MARRIOTT MARQUIS		
TITLE FLOOR PLAN - LEVEL S5 BALLROOM (34'-0")		
SCALE 1" = 50'-0"	DATE 08-08-2008	REFERENCES
PROJECT NO. 207202		3058-002

DWG NO
 PUD 370
 A-205



SECOND SUBMISSION



THE COOPER CARRY - tvs
COLLABORATIVE
2700 PROMENADE TWO
1230 PEACHTREE STREET N.E.
ATLANTA, GEORGIA 30309-3591
404-895-6600 FAX: 404-895-8700

© COOPER CARRY INC.

PROJECT	WASHINGTON D.C. MARRIOTT MARQUIS		
TITLE	FLOOR PLAN - LEVEL S6 BALLROOM MEZZANINE (49'-0")		
SCALE	DATE	REFERENCES	PROJECT NO.
1" = 50'-0"	08-08-2008		20709 2006-030

DWG NO.
PUD 370
A-206



NOTE:
 THE INTERIOR LAYOUTS SHOWN ON THE BUILDING PLANS ARE SCHEMATIC.
 CHANGES TO THE LAYOUTS, NOT SIGNIFICANTLY AFFECTING THE EXTERIOR
 ENVELOPE OR THE FOOTAGE DISTRIBUTION, MAY OCCUR.

SECOND SUBMISSION



THE COOPER CARRY - tvs
 COLLABORATIVE
 2700 PROMENADE TWO
 1230 PEACHTREE STREET N E
 ATLANTA, GEORGIA 30309-3591
 404-888-6600 FAX: 404-888-6700

© COOPER CARRY INC

PROJECT WASHINGTON D.C. MARRIOTT MARQUIS
 TITLE FLOOR PLAN - LEVEL S7 HOTEL ADMINISTRATION (65'-0")
 SCALE 1" = 50'-0" DATE 08-08-2008 REFERENCES PROJECT NO. 207202 3058-000

OWS NO PUD 370
 A-207



- public circulation/lobby
- exhibit hall
- meeting room
- restaurant
- retail
- guestroom
- public restroom
- health club
- pool
- admin
- back of house
- back of house circulation
- service elevator/ exit stair
- mechanical
- terrace/ pavement
- loading dock
- road/ parking
- surrounding building
- poche/ shadow
- grass
- shrub / planter
- tall tree
- low tree
- site fountain
- lake/ ocean

NOTE:
THE INTERIOR LAYOUTS SHOWN ON THE BUILDING PLANS ARE SCHEMATIC.
CHANGES TO THE LAYOUTS, NOT SIGNIFICANTLY AFFECTING THE EXTERIOR
ENVELOPE OR THE FOOTAGE DISTRIBUTION, MAY OCCUR.

SECOND SUBMISSION

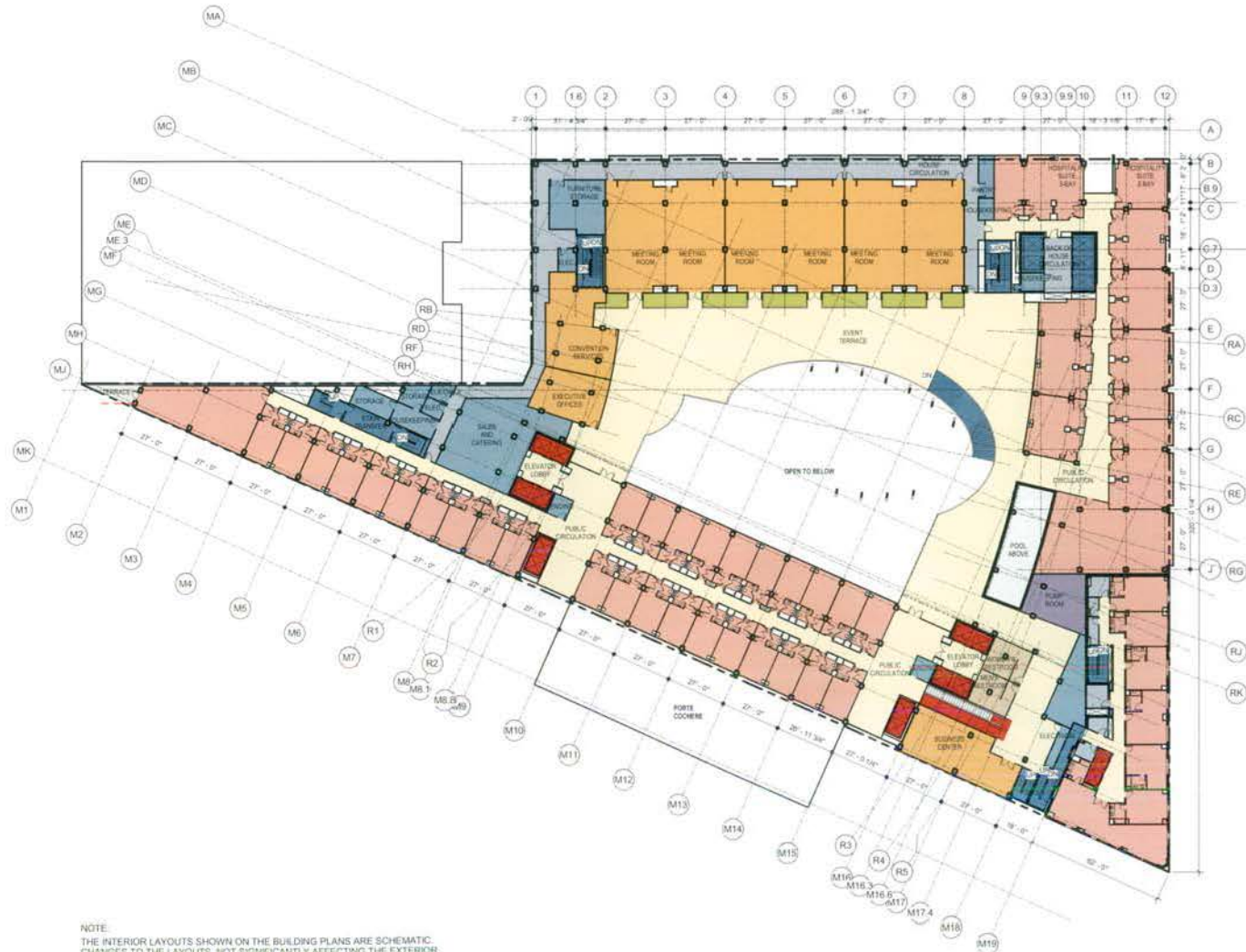


THE COOPER CARRY - tvs
COLLABORATIVE
2710 PROMENADE TWO
1230 PEACHTREE STREET N.E.
ATLANTA, GEORGIA 30309-3591
404-888-8800 FAX: 404-888-8710

© COOPER CARRY INC.

PROJECT WASHINGTON D.C. MARRIOTT MARQUIS			
TITLE FLOOR PLAN - LEVEL 1 LOBBY (73'-0")			
SCALE 1" = 50'-0"	DATE 08-08-2008	REFERENCES	PROJECT NO. 20702 3058.000

DWG NO. PUD 370 A-208



- public circulation/lobby
- exhibit hall
- meeting room
- restaurant
- retail
- guestroom
- public circulation

- public restroom
- health club
- pool

- admin
- back of house
- back of house circulation
- service elevator/ exit stair
- mechanical

- terrace/pavement
- loading dock
- road/parking
- surrounding building
- patch/shadow

- grass
- shrub / planter
- tall tree
- low tree
- site fountain
- lake/ocean

NOTE:
 THE INTERIOR LAYOUTS SHOWN ON THE BUILDING PLANS ARE SCHEMATIC.
 CHANGES TO THE LAYOUTS, NOT SIGNIFICANTLY AFFECTING THE EXTERIOR
 ENVELOPE OR THE FOOTAGE DISTRIBUTION, MAY OCCUR.

SECOND SUBMISSION

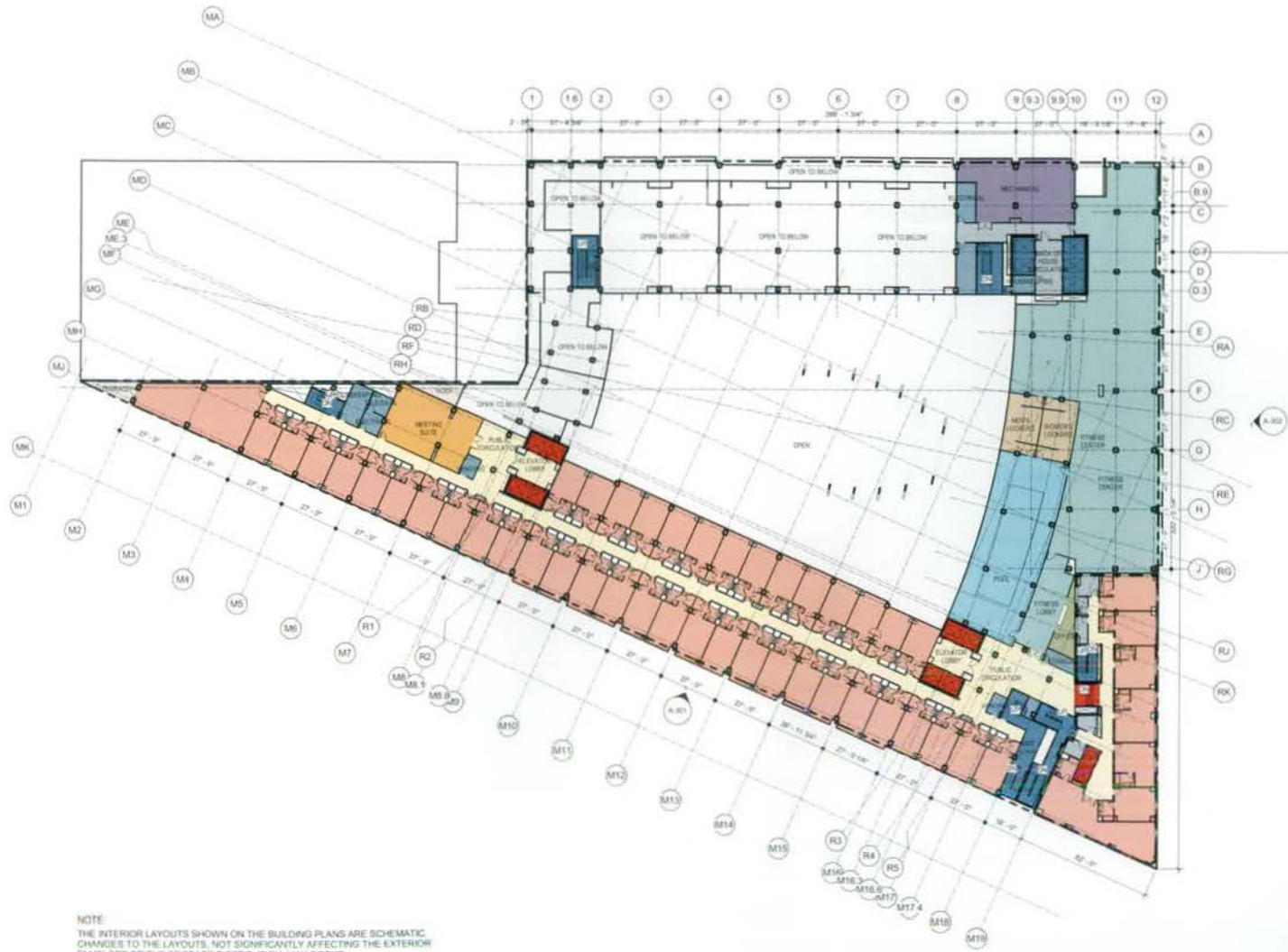


THE COOPER CARRY - TVS
 COLLABORATIVE
 2700 PROMENADE TWO
 1230 PEACHTREE STREET N.E.
 ATLANTA, GEORGIA 30309-3501
 404-888-6900 FAX 404-888-8700

© COOPER CARRY INC.

PROJECT		WASHINGTON D.C. MARRIOTT MARQUIS	
TITLE		FLOOR PLAN - LEVEL 2 CONFERENCE (93'-0")	
SCALE	DATE	REFERENCES	PROJECT NO.
1" = 50'-0"	08-08-2008		297202 3058-000

DWG NO
PUD 370
A-209



- public circulation/lobby
- exhibit hall
- meeting room
- restaurant
- retail
- guestroom
- public circulation

- public restroom
- health club
- pool

- admin
- back of house
- back of house circulation
- service elevator/ exit stair
- mechanical

- terrace/ pavement
- loading dock
- road/ parking
- surrounding building
- patches/shadow

- grass
- shrub / planter
- tall tree
- low tree
- site fountain
- lake/ ocean

NOTE:
 THE INTERIOR LAYOUTS SHOWN ON THE BUILDING PLANS ARE SCHEMATIC
 CHANGES TO THE LAYOUTS, NOT SIGNIFICANTLY AFFECTING THE EXTERIOR
 ENVELOPE OR THE FOOTAGE DISTRIBUTION, MAY OCCUR.

SECOND SUBMISSION

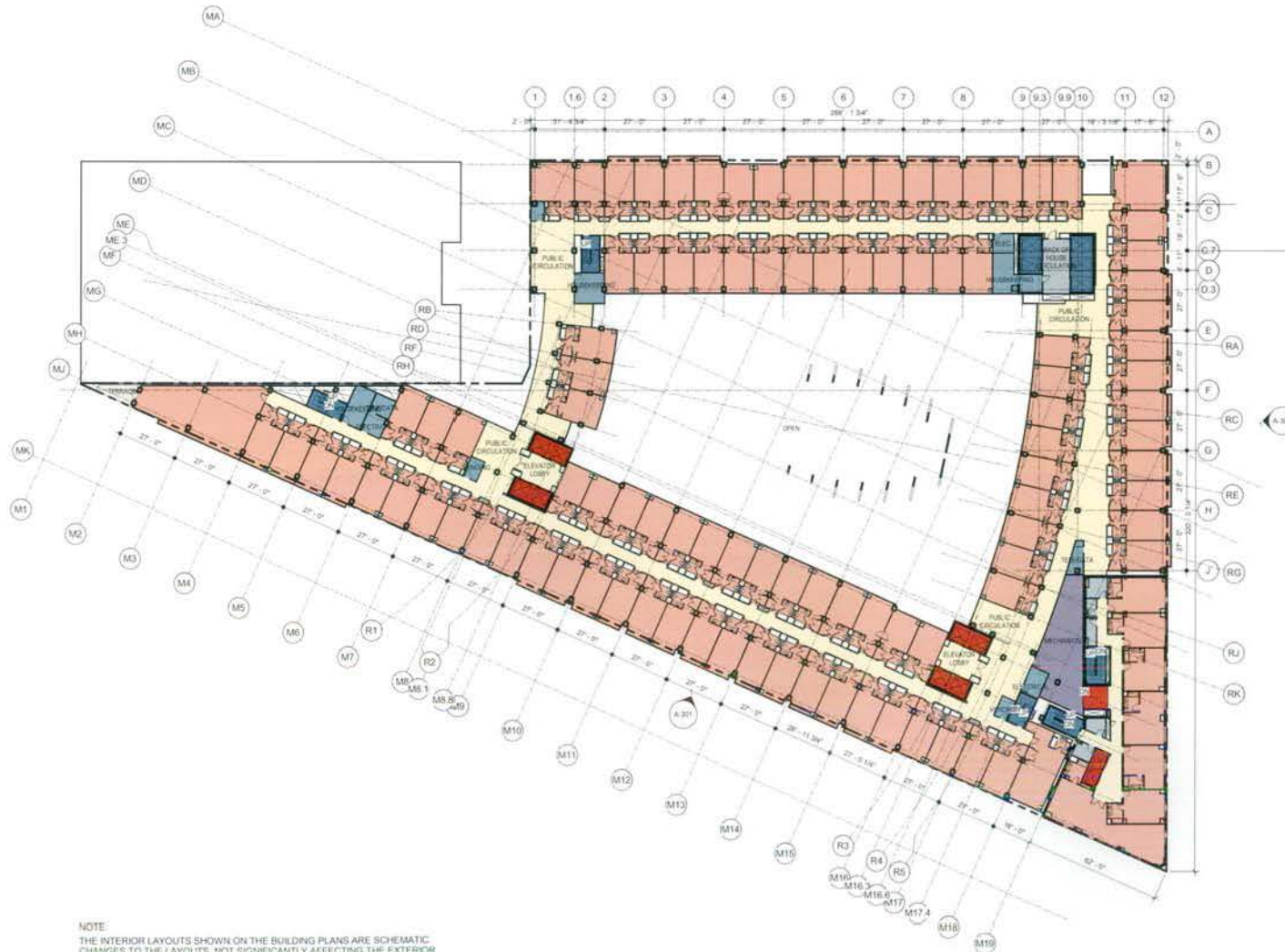


THE COOPER CARRY - tvs
 COLLABORATIVE
 2700 PROMENADE TWO
 1230 PEACHTREE STREET N.E.
 ATLANTA, GEORGIA 30329-3591
 404-888-6800 FAX: 404-888-6700

© COOPER CARRY INC.

PROJECT WASHINGTON D.C. MARRIOTT MARQUIS			
TITLE FLOOR PLAN - LEVEL 3 HOSPITALITY SUITE (101'-8")			
SCALE 1" = 50'-0"	DATE 08-08-2008	REFERENCES	PROJECT NO. 207202 3058-006

DWG NO.
 PUD 370
 A-210



- public circulation/lobby
- exhibit hall
- meeting room
- restaurant
- retail
- guestroom
- public circulation

- public restroom
- health club
- pool

- admin
- back of house
- back of house circulation
- service elevator/ exit stair
- mechanical

- terrace/ pavement
- loading dock
- road/ parking
- surrounding building
- patches/ shadow

- grass
- shrub/ planter
- tall tree
- low tree
- site fountain
- lake/ ocean

NOTE:
 THE INTERIOR LAYOUTS SHOWN ON THE BUILDING PLANS ARE SCHEMATIC.
 CHANGES TO THE LAYOUTS, NOT SIGNIFICANTLY AFFECTING THE EXTERIOR
 ENVELOPE OR THE FOOTAGE DISTRIBUTION, MAY OCCUR.

SECOND SUBMISSION

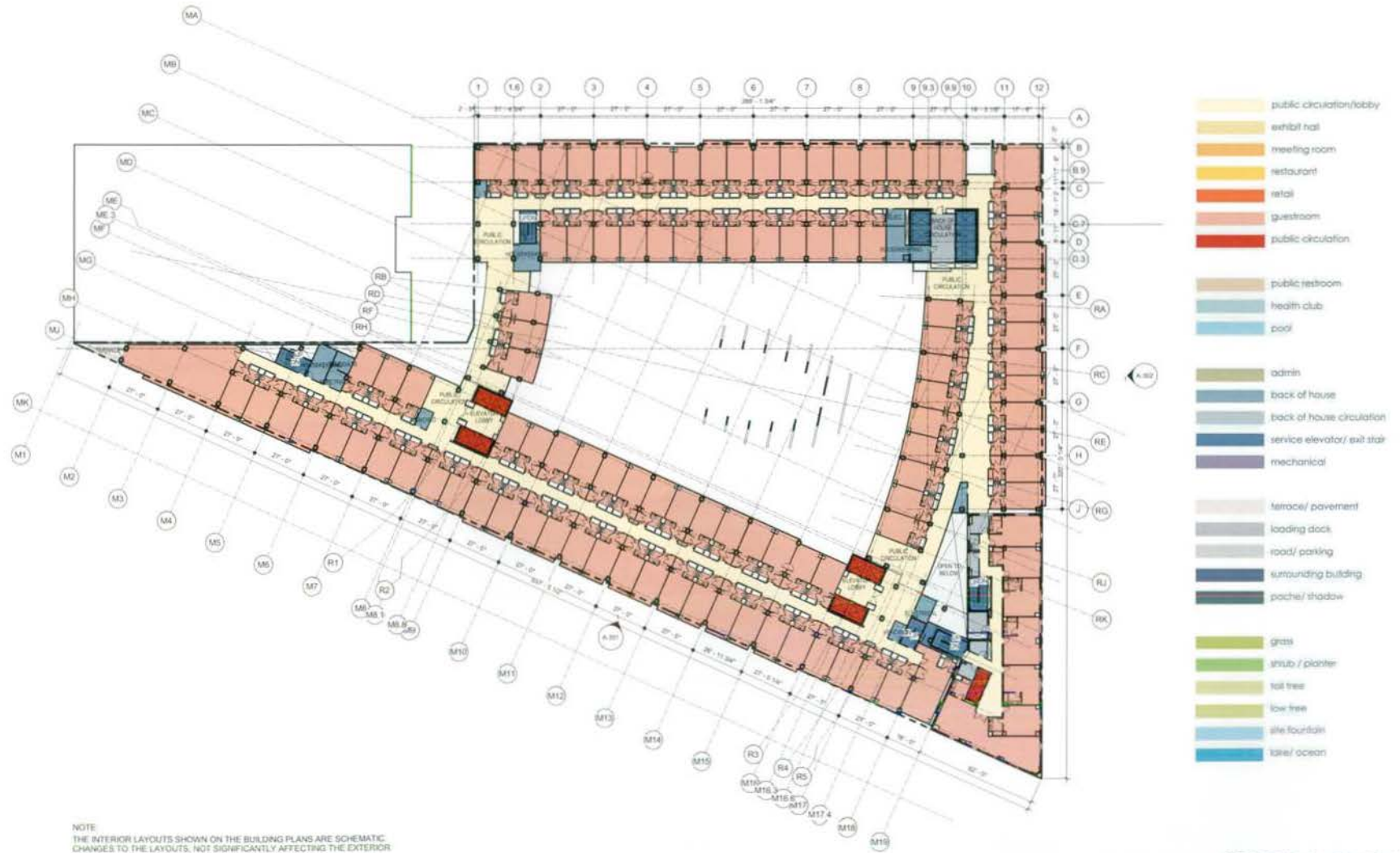


THE COOPER CARRY - tvs
 COLLABORATIVE
 2700 PROMENADE TWO
 1230 PEACHTREE STREET N.E.
 ATLANTA, GEORGIA 30309-3591
 404-888-6600 FAX: 404-888-6700

© COOPER CARRY INC.

PROJECT WASHINGTON D.C. MARRIOTT MARQUIS			
TITLE FLOOR PLAN - LEVEL 4 AMENITY (110'-4")			
SCALE 1" = 50'-0"	DATE 08-08-2008	REFERENCES	PROJECT NO. 20722 3058-001

OWG NO.
 PUD 370
 A-211



NOTE
 THE INTERIOR LAYOUTS SHOWN ON THE BUILDING PLANS ARE SCHEMATIC.
 CHANGES TO THE LAYOUTS, NOT SIGNIFICANTLY AFFECTING THE EXTERIOR
 ENVELOPE OR THE FOOTAGE DISTRIBUTION, MAY OCCUR.

SECOND SUBMISSION

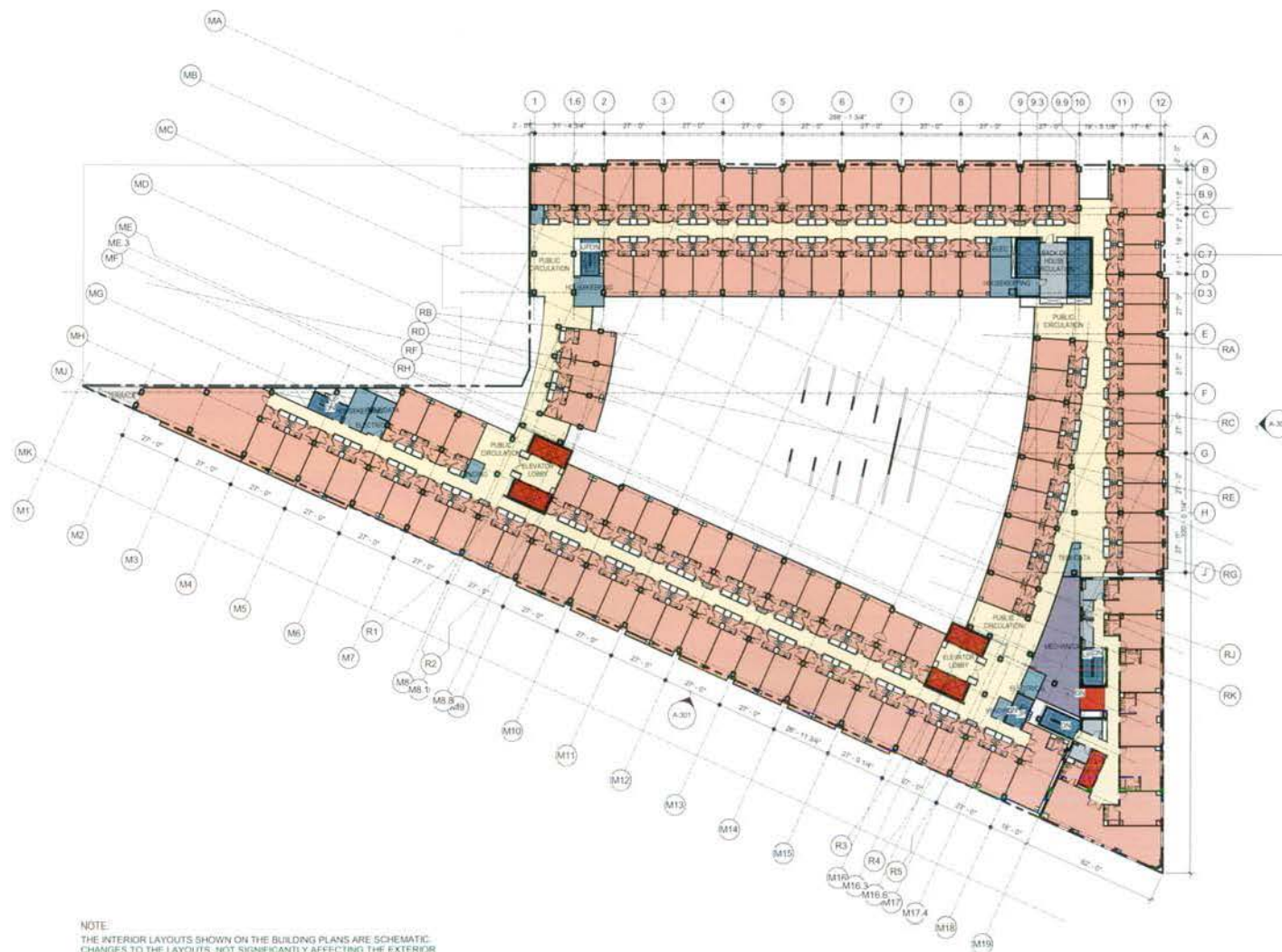


THE COOPER CARRY - TVS
 COLLABORATIVE
 2700 PROMENADE TWO
 1230 PEACHTREE STREET N.E.
 ATLANTA, GEORGIA 30309-3591
 404-868-6800 FAX: 404-868-8708

© COOPER CARRY INC

PROJECT WASHINGTON D.C. MARRIOTT MARQUIS			
TITLE FLOOR PLAN - LEVEL 5 GUESTROOM (119'-0")			
SCALE 1" = 50'-0"	DATE 08-08-2008	REFERENCES	PROJECT NO. 207202 3058-000

DWG NO.
 PUD 370
 A-212



- public circulation/lobby
- exhibit hall
- meeting room
- restaurant
- retail
- guestroom
- public circulation
- public restroom
- health club
- pool
- admin
- back of house
- back of house circulation
- service elevator/ exist stair
- mechanical
- terrace/ pavement
- loading dock
- road/ parking
- surrounding building
- poche/ shadow
- grass
- shrub / planter
- tall tree
- low tree
- site fountain
- lake/ ocean

NOTE:
 THE INTERIOR LAYOUTS SHOWN ON THE BUILDING PLANS ARE SCHEMATIC.
 CHANGES TO THE LAYOUTS, NOT SIGNIFICANTLY AFFECTING THE EXTERIOR
 ENVELOPE OR THE FOOTAGE DISTRIBUTION, MAY OCCUR.

SECOND SUBMISSION



THE COOPER CARRY - TVS
 COLLABORATIVE
 2700 PROMENADE TWO
 1230 PEACHTREE STREET N.E.
 ATLANTA, GEORGIA 30309-3591
 404-885-6000 FAX: 404-885-6700

© COOPER CARRY INC.

PROJECT WASHINGTON D.C. MARRIOTT MARQUIS			
TITLE FLOOR PLAN - LEVEL 6-9 TYP GUESTROOMS (127'-8" - 153'-8")			
SCALE 1" = 50'-0"	DATE 08-08-2008	REFERENCES	PROJECT NO 207202 3058-001

DWG NO PUD 370 A-213



- public circulation/lobby
- exhibit hall
- meeting room
- restaurant
- retail
- guestroom
- public circulation
- public restroom
- health club
- pool
- admin
- back of house
- back of house circulation
- service elevator/ exist stair
- mechanical
- terrace/ pavement
- loading dock
- road/ parking
- surrounding building
- poche/ shadow
- grass
- shrub / planter
- tall tree
- low trees
- site fountain
- lake/ ocean

NOTE:
 THE INTERIOR LAYOUTS SHOWN ON THE BUILDING PLANS ARE SCHEMATIC.
 CHANGES TO THE LAYOUTS, NOT SIGNIFICANTLY AFFECTING THE EXTERIOR
 ENVELOPE OR THE FOOTAGE DISTRIBUTION, MAY OCCUR.

SECOND SUBMISSION



THE COOPER CARRY - tvs
 COLLABORATIVE
 2700 PROMENADE TWO
 1220 PEACHTREE STREET N.E.
 ATLANTA, GEORGIA 30309-3391
 404-889-6000 FAX 404-888-6700

© COOPER CARRY INC.

PROJECT WASHINGTON D.C. MARRIOTT MARQUIS			
TITLE FLOOR PLAN - LEVEL 10 GUESTROOM (162'-4")			
SCALE 1" = 50'-0"	DATE 08-08-2008	REFERENCES	PROJECT NO. 20720 3056-003

DWG NO. PUD 370 A-214



- public circulation/lobby
- exhibit hall
- meeting room
- restaurant
- retail
- guestroom
- public circulation
- public restroom
- health club
- pool
- admin
- back of house
- back of house circulation
- service elevator/ exit stair
- mechanical
- terrace/ pavement
- loading dock
- road/ parking
- surrounding building
- patch/ shadow
- grass
- shrub / planter
- tall tree
- low tree
- site fountain
- lake/ ocean

NOTE:
 THE INTERIOR LAYOUTS SHOWN ON THE BUILDING PLANS ARE SCHEMATIC.
 CHANGES TO THE LAYOUTS, NOT SIGNIFICANTLY AFFECTING THE EXTERIOR
 ENVELOPE OR THE FOOTAGE DISTRIBUTION, MAY OCCUR.

SECOND SUBMISSION

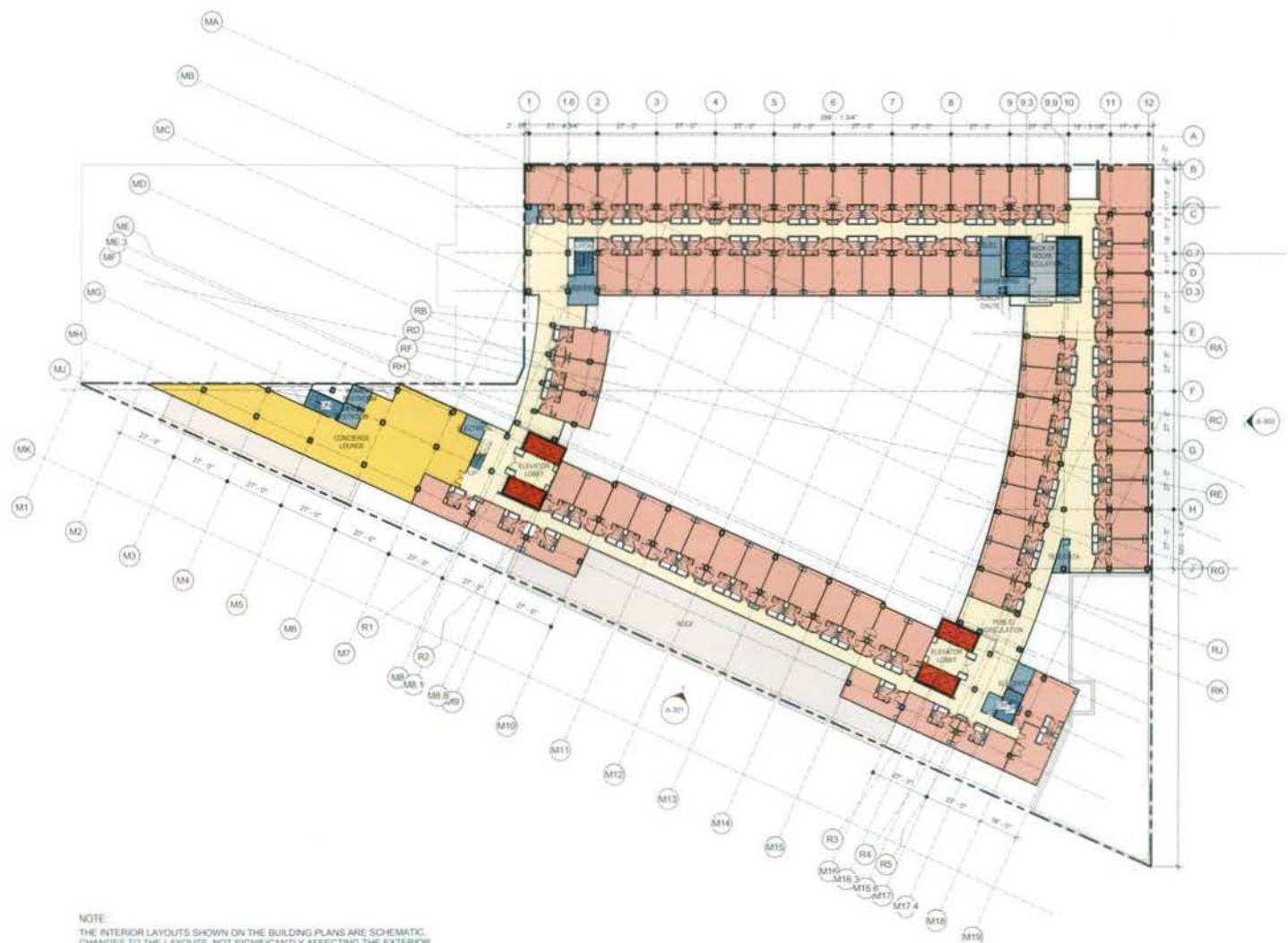


THE COOPER CARRY - tvs
 COLLABORATIVE
 2705 PROMENADE TWO
 1200 PEACHTREE STREET N.E.
 ATLANTA, GEORGIA 30309-3591
 404-888-8600 FAX 404-888-8100

© COOPER CARRY INC.

PROJECT WASHINGTON D.C. MARRIOTT MARQUIS			
TITLE FLOOR PLAN - LEVEL 11 GUESTROOM (171'-0")			
SCALE 1" = 50'-0"	DATE 08-08-2008	REFERENCES	PROJECT NO. 20720 3054-000

DWG NO:
PUD 370
A-215



- public circulation/lobby
- exhibit hall
- meeting room
- restaurant
- retail
- guestroom
- public circulation

- public restroom
- health club
- pool

- admin
- back of house
- back of house circulation
- service elevator/ exit stair
- mechanical

- terrace/ pavement
- loading dock
- road/ parking
- surrounding building
- poche/ shadow

- grass
- shrub/ planter
- tall tree
- low tree
- site fountain
- lakes/ ocean

NOTE:
 THE INTERIOR LAYOUTS SHOWN ON THE BUILDING PLANS ARE SCHEMATIC.
 CHANGES TO THE LAYOUTS, NOT SIGNIFICANTLY AFFECTING THE EXTERIOR
 ENVELOPE OR THE FOOTAGE DISTRIBUTION, MAY OCCUR.

SECOND SUBMISSION

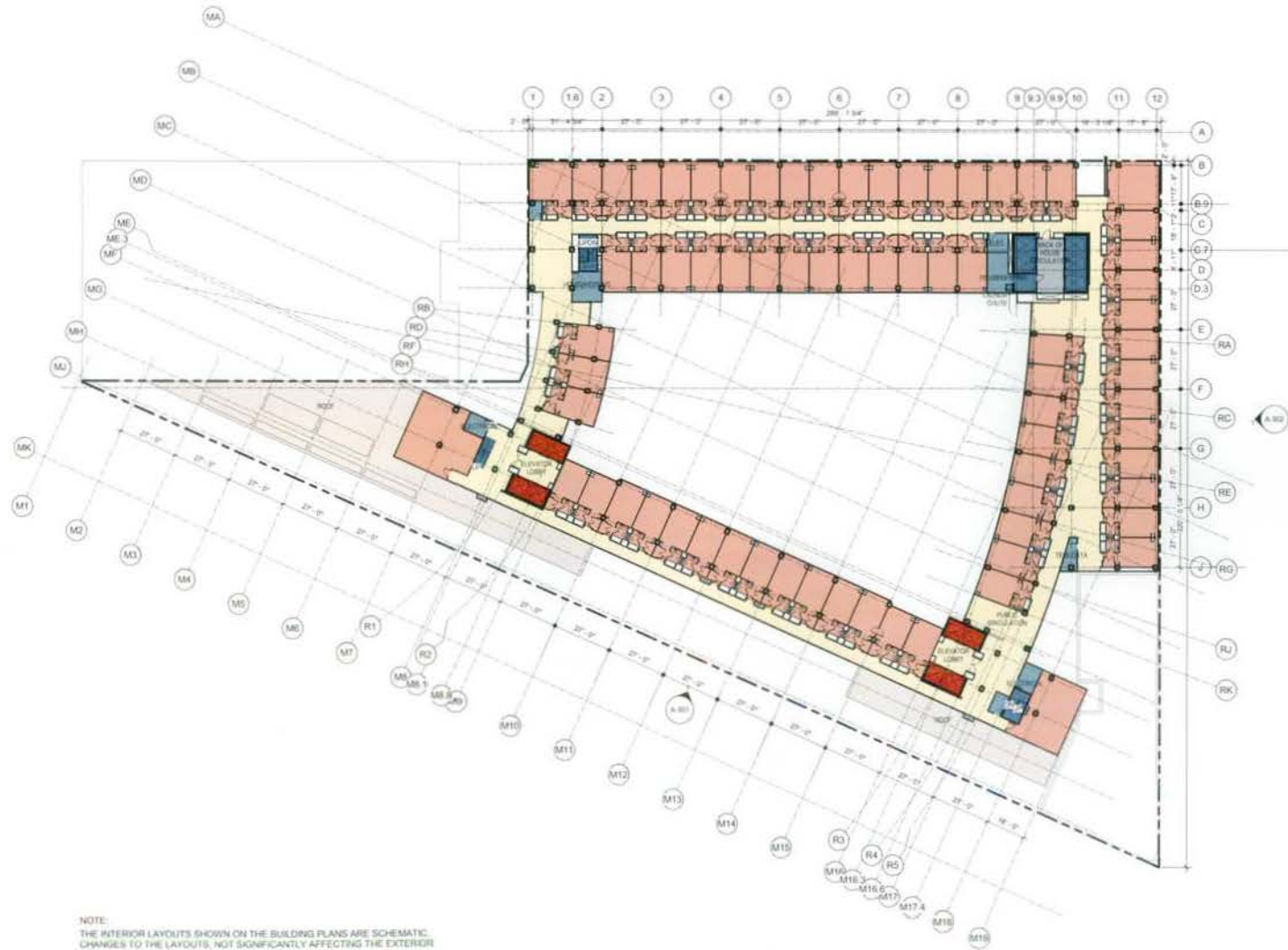


THE COOPER CARRY - TVS
 COLLABORATIVE
 2700 PROMENADE TWO
 1230 PEACHTREE STREET N.E.
 ATLANTA, GEORGIA 30309-3091
 404-888-6600 FAX 404-888-6700

© COOPER CARRY INC.

PROJECT	WASHINGTON D.C. MARRIOTT MARQUIS		
TITLE	FLOOR PLAN - LEVEL 12 GUESTROOM (179'-8")		
SCALE	DATE	REFERENCES	PROJECT NO.
1" = 50'-0"	08-08-2008		207202 3058-000

DWG NO.
 PUD 370
 A-216



- public circulation/lobby
- exhibit hall
- meeting room
- restaurant
- retail
- guestroom
- public circulation
- public restroom
- health club
- pool
- admin
- back of house
- back of house circulation
- service elevator/axil stair
- mechanical
- terrace/pavement
- loading dock
- road/parking
- surrounding building
- porch/shadow
- grass
- shrub/planter
- tall tree
- low tree
- site fountain
- lake/ocean

NOTE:
THE INTERIOR LAYOUTS SHOWN ON THE BUILDING PLANS ARE SCHEMATIC.
CHANGES TO THE LAYOUTS, NOT SIGNIFICANTLY AFFECTING THE EXTERIOR
ENVELOPE OR THE FOOTAGE DISTRIBUTION, MAY OCCUR.

SECOND SUBMISSION

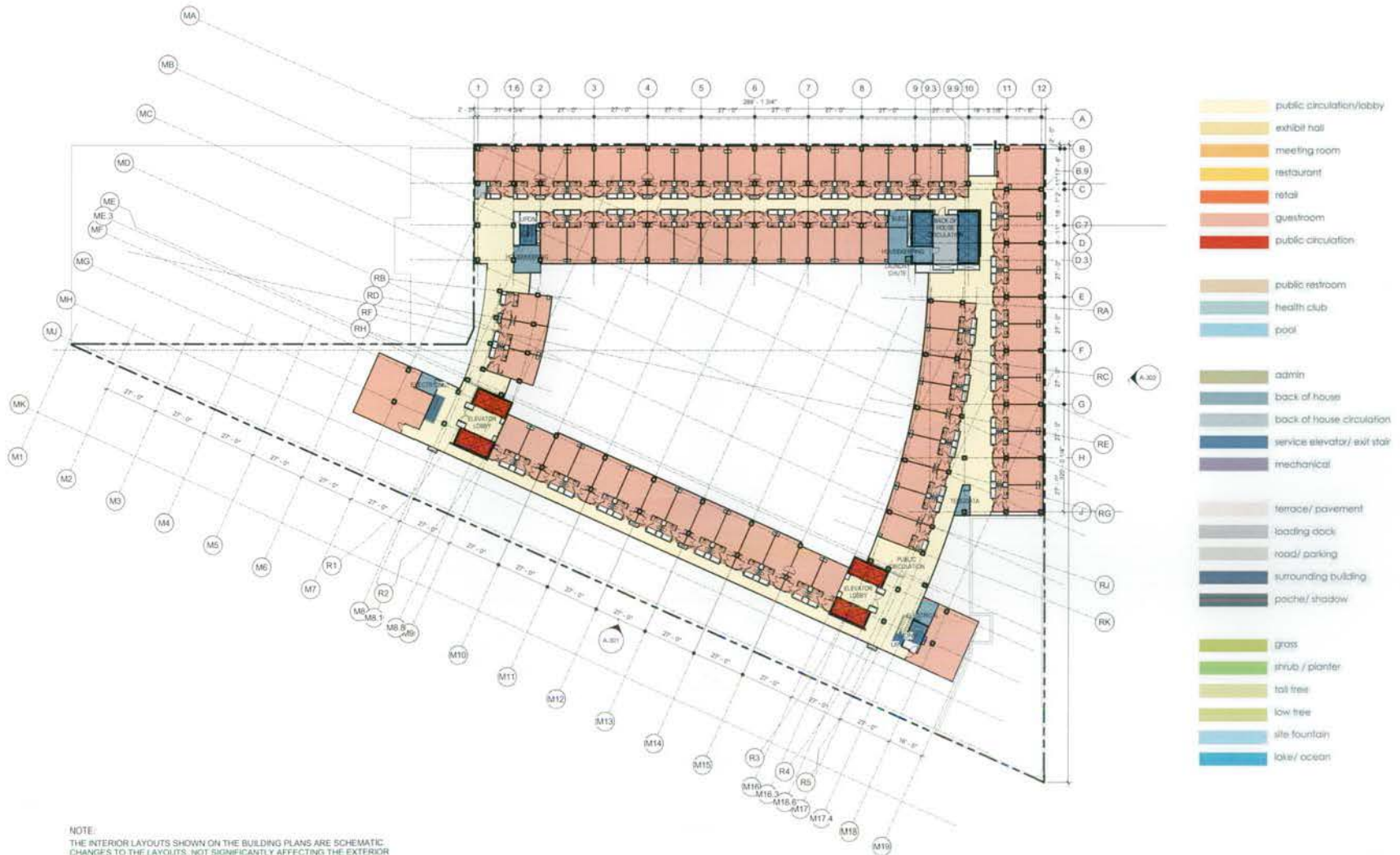


THE COOPER CARRY - tvs
COLLABORATIVE
2700 PROMENADE TWO
1200 PEACHTREE STREET N.E.
ATLANTA, GEORGIA 30309-3551
404-888-6500 FAX 404-888-6700

© COOPER CARRY INC.

PROJECT WASHINGTON D.C. MARRIOTT MARQUIS			
TITLE FLOOR PLAN - LEVEL 13 GUESTROOM (188'-4")			
SCALE 1" = 50'-0"	DATE 08-08-2008	REFERENCES	PROJECT NO. 307200 3558-005

DWG NO.
PUD 370
A-217



SECOND SUBMISSION

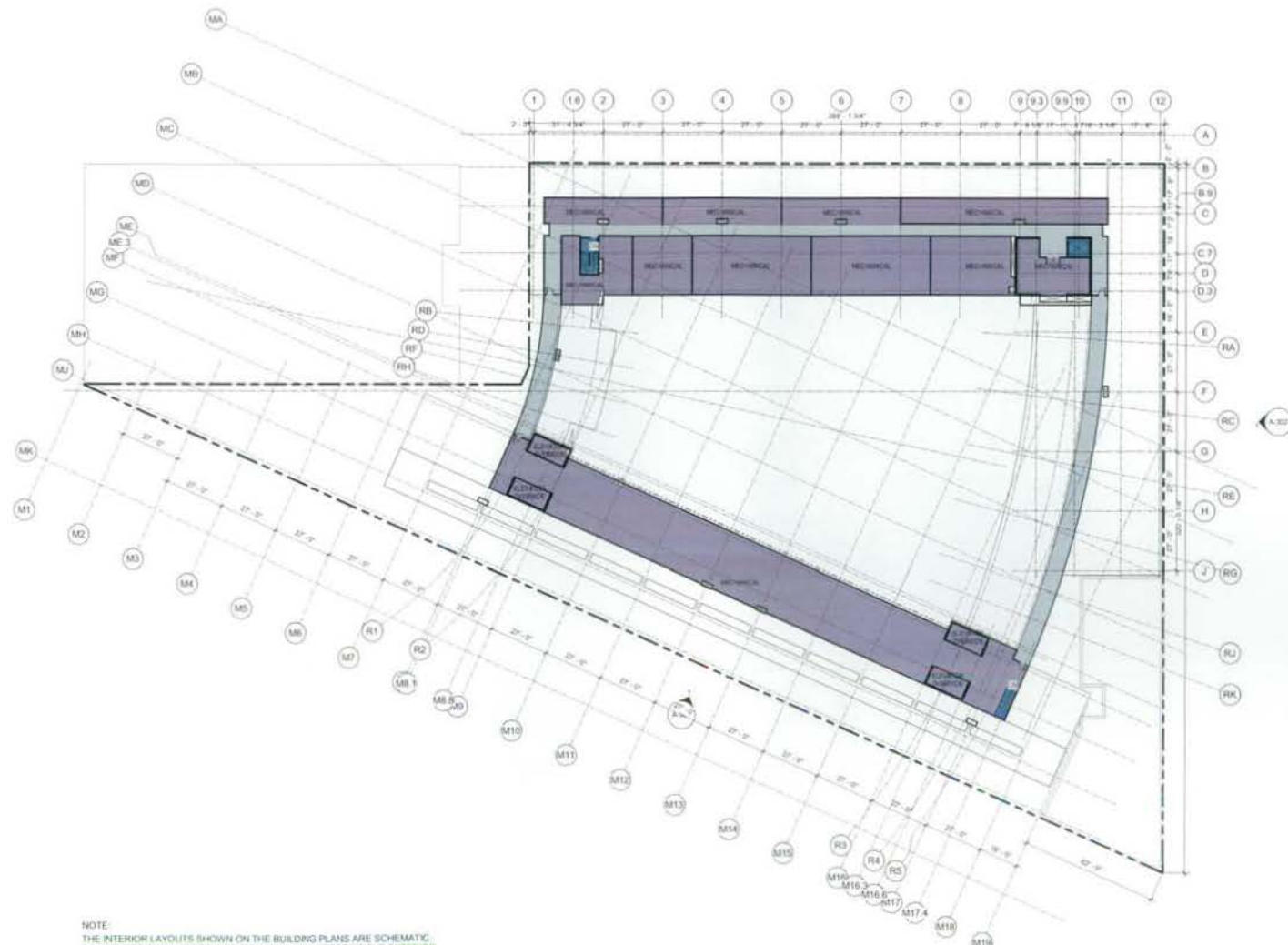


THE COOPER CARRY - TVS
COLLABORATIVE
2700 PROMENADE TWO
1230 PEACHTREE STREET N.E.
ATLANTA, GEORGIA 30309-3591
404-888-6900 FAX: 404-888-6700

© COOPER CARRY, INC.

PROJECT WASHINGTON D.C. MARRIOTT MARQUIS
TITLE FLOOR PLAN - LEVEL 14 GUESTROOM (197'-0")
SCALE 1" = 50'-0" DATE 08-08-2008 REFERENCES PROJECT NO 207202 3058-000

DWG NO:
PUD 370
A-218



- public circulation/lobby
- exhibit hall
- meeting room
- restaurant
- retail
- guestroom
- public circulation

- public restroom
- health club
- pool

- admin
- back of house
- back of house circulation
- service elevator/exit stair
- mechanical

- terrace/pavement
- loading dock
- road/parking
- surrounding building
- poche/shadow

- grass
- shrub / planter
- tall tree
- low tree
- site fountain
- lake/ocean

NOTE:
 THE INTERIOR LAYOUTS SHOWN ON THE BUILDING PLANS ARE SCHEMATIC.
 CHANGES TO THE LAYOUTS, NOT SIGNIFICANTLY AFFECTING THE EXTERIOR
 ENVELOPE OR THE FOOTAGE DISTRIBUTION, MAY OCCUR.

SECOND SUBMISSION

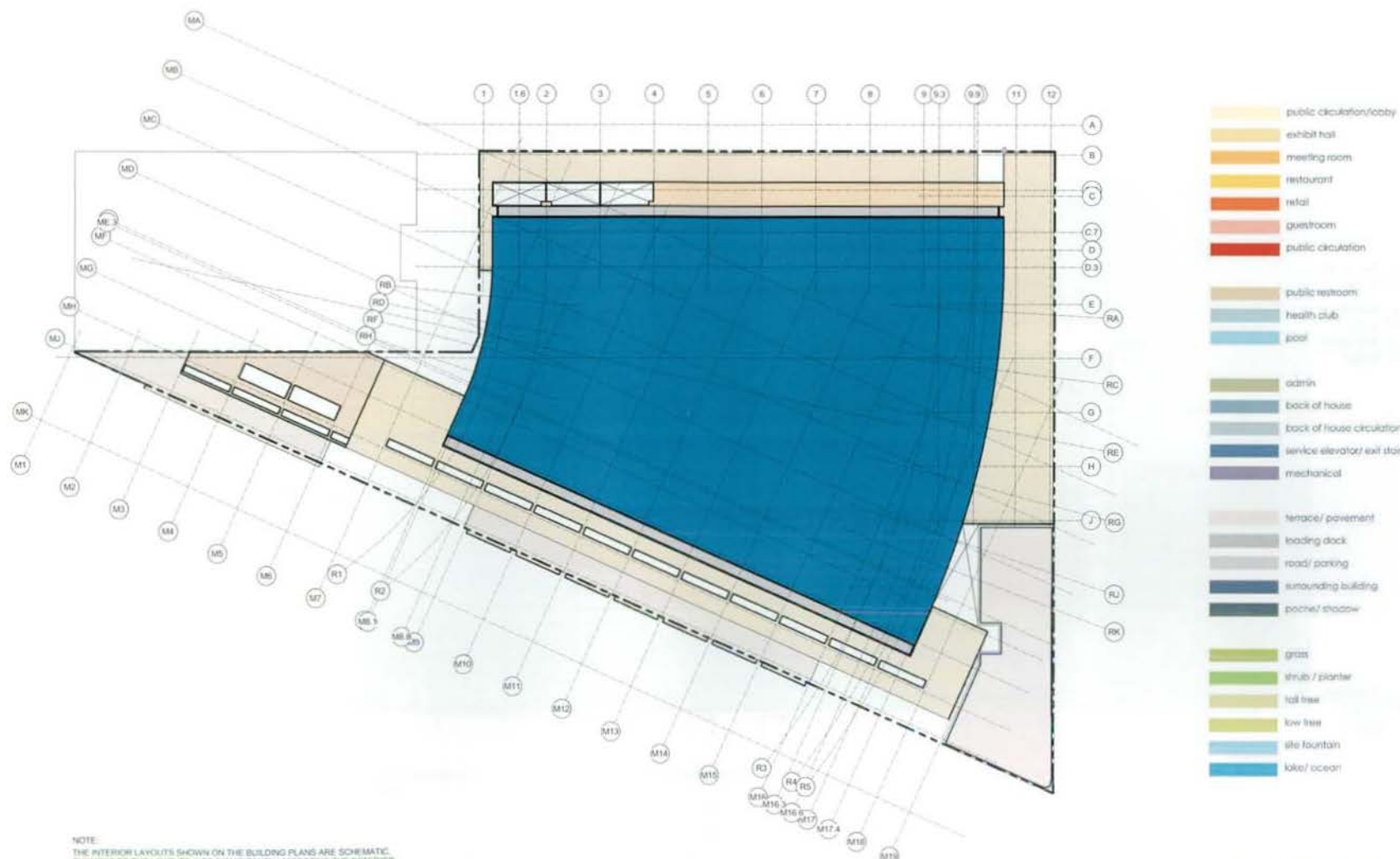


THE COOPER CARRY - tvs
 COLLABORATIVE
 2700 PROMENADE TOWN
 1230 PEACHTREE STREET N.E.
 ATLANTA, GEORGIA 30308-3591
 404-888-6000 FAX: 404-888-6700

© COOPER CARRY INC.

PROJECT WASHINGTON D.C. MARRIOTT MARQUIS			
TITLE FLOOR PLAN - LEVEL 15 MECHANICAL PENTHOUSE (205'-8")			
SCALE 1" = 50'-0"	DATE 08-08-2008	REFERENCES	PROJECT NO. 207252 3058-001

DWG NO.
 PUD 370
 A-219



NOTE:
 THE INTERIOR LAYOUTS SHOWN ON THE BUILDING PLANS ARE SCHEMATIC.
 CHANGES TO THE LAYOUTS, NOT SIGNIFICANTLY AFFECTING THE EXTERIOR
 ENVELOPE OR THE FOOTAGE DISTRIBUTION, MAY OCCUR.

SECOND SUBMISSION

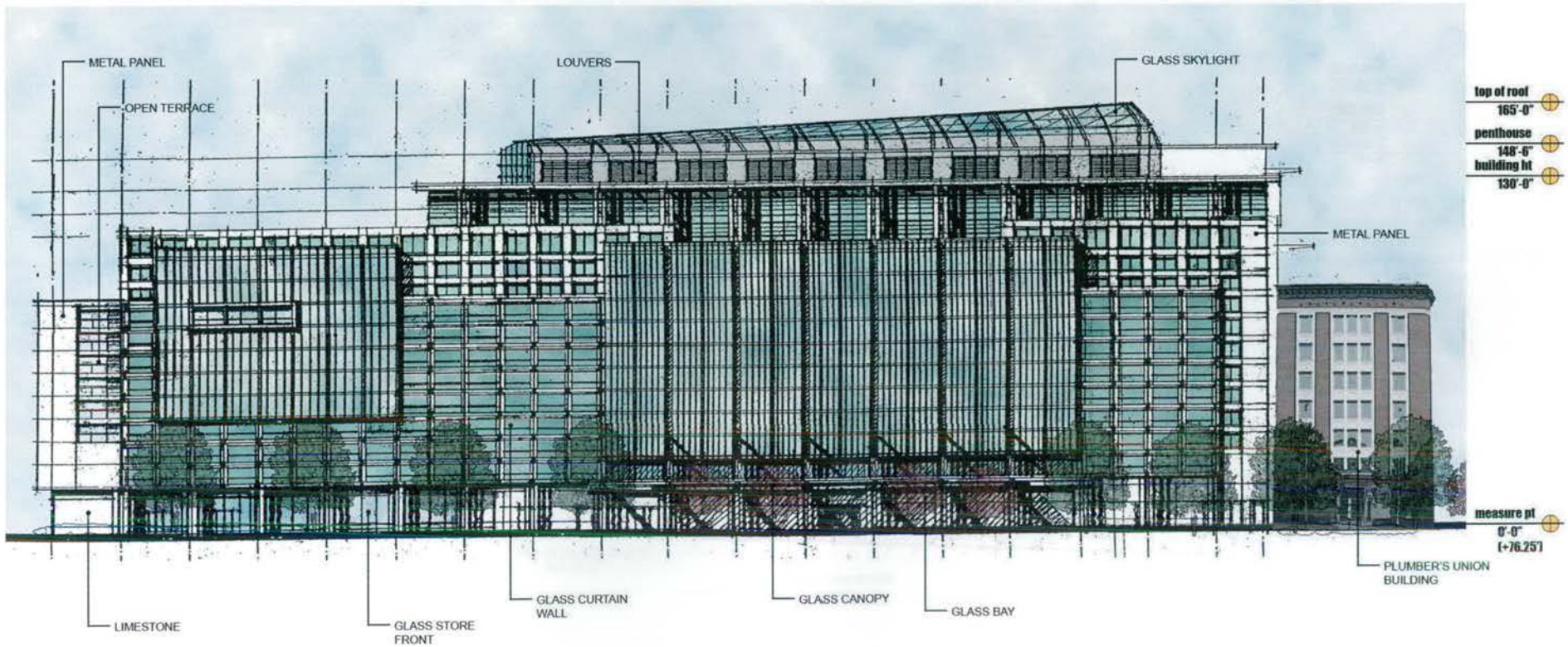


THE COOPER CARRY - tvs
 COLLABORATIVE
 2700 PROMENADE TWO
 1200 PEACHTREE STREET N.E.
 ATLANTA, GEORGIA 30308-3591
 404.886.6030 FAX: 404.886.4700

© COOPER CARRY INC.

PROJECT WASHINGTON D.C. MARRIOTT MARQUIS
 TITLE ROOF PLAN (225'-0")
 SCALE 1" = 50'-0" DATE 08-08-2008 REFERENCES PROJECT NO 207202 3058.000

DWG NO
 PUD 370
 A-220



SECOND SUBMISSION

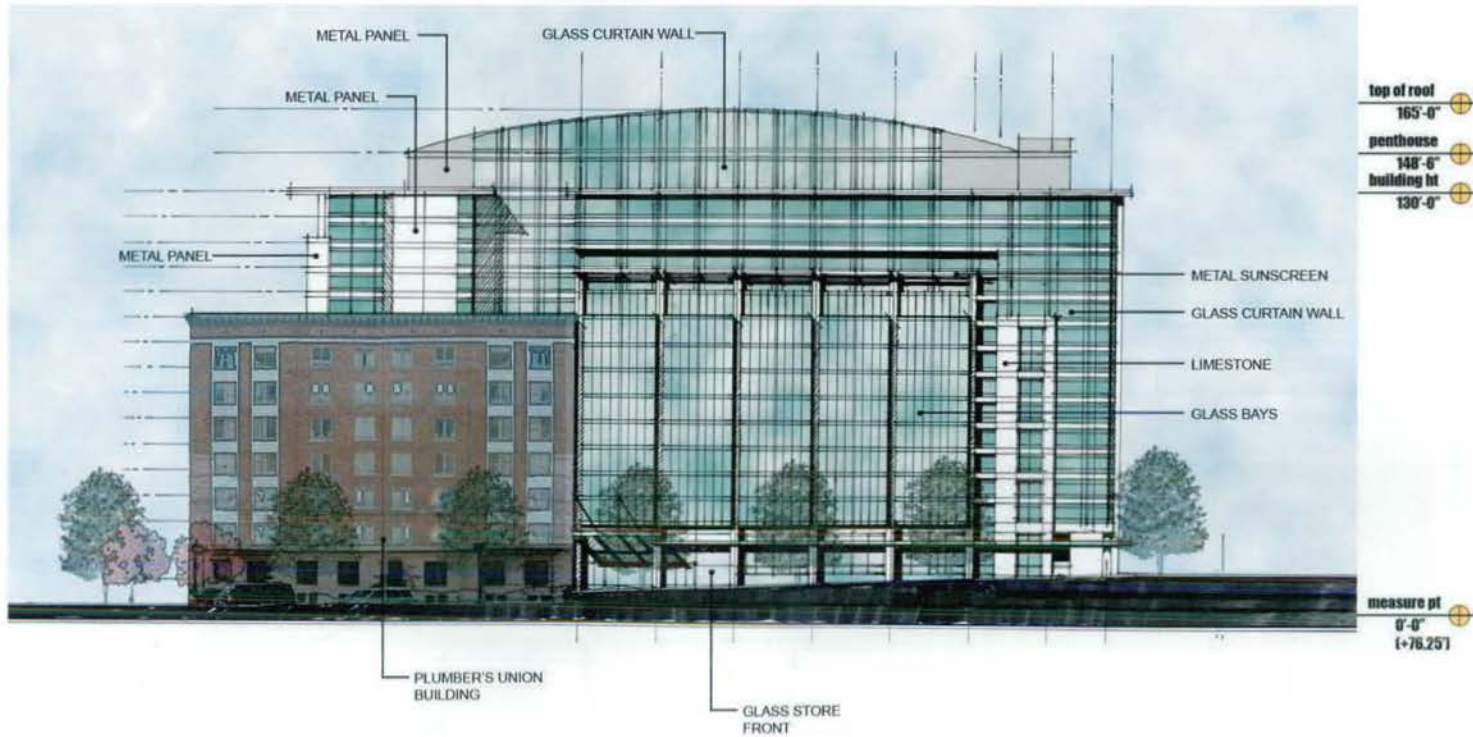


THE COOPER CARRY - TVS COLLABORATIVE
2700 PROMENADE TWO
1205 PEACHTREE STREET N.E.
ATLANTA, GEORGIA 30309-3591
404-888-8600 FAX: 404-888-6700

© COOPER CARRY INC.

PROJECT	WASHINGTON D.C. MARRIOTT MARQUIS		
TITLE	BUILDING ELEVATIONS - MASS. AVE		
SCALE	DATE	REFERENCES	PROJECT NO.
1" = 40'-0"	08-08-2008		257202 3058-050

DWG NO.
PUD 370
A-301



SECOND SUBMISSION

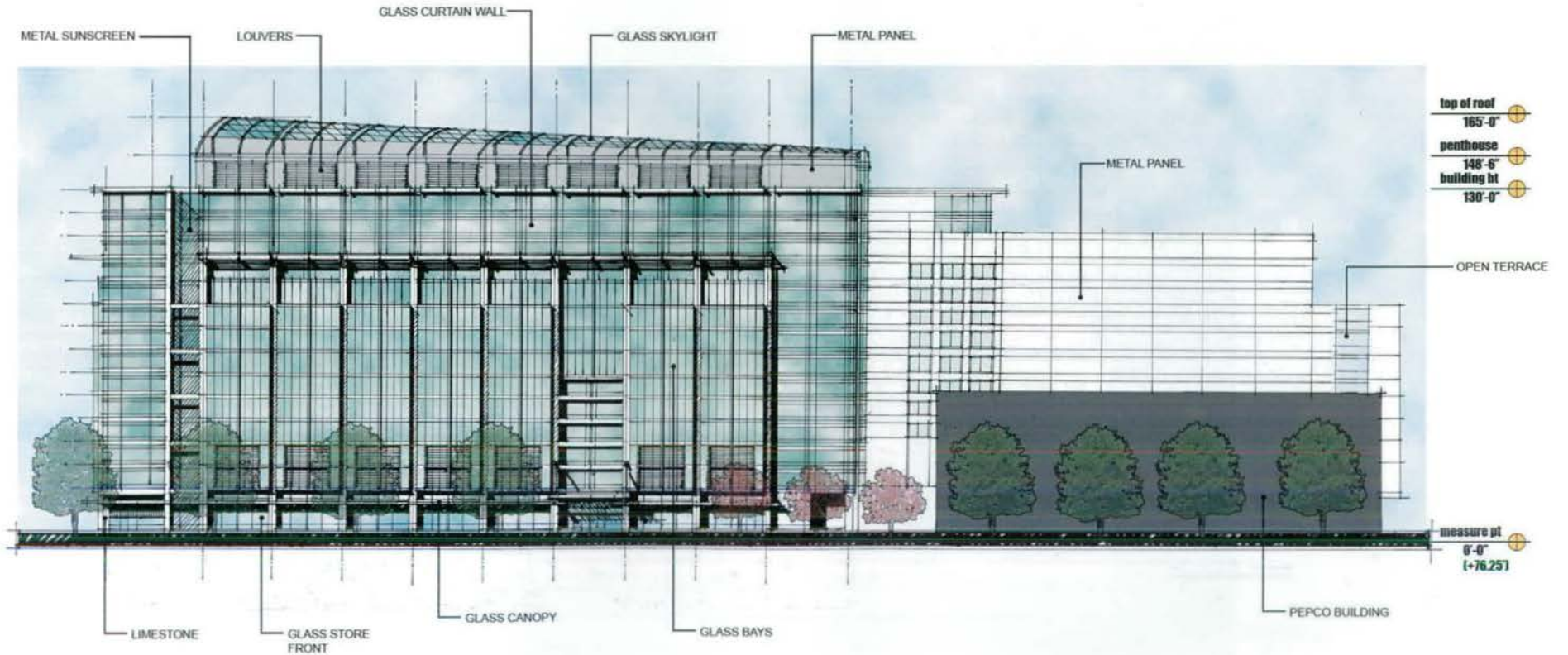


THE COOPER CARRY - tvs
COLLABORATIVE
2710 PROMENADE TWO
1230 PEACHTREE STREET N.E.
ATLANTA, GEORGIA 30309-3591
404-888-6000 FAX: 404-888-6700

© COOPER CARRY INC.

PROJECT			
WASHINGTON D.C. MARRIOTT MARQUIS			
TITLE			
BUILDING ELEVATIONS - 9TH STREET			
SCALE	DATE	REFERENCES	PROJECT NO.
1" = 40'-0"	08-08-2008		207202 3058-005

DWG NO
PUD 370
A-302



SECOND SUBMISSION

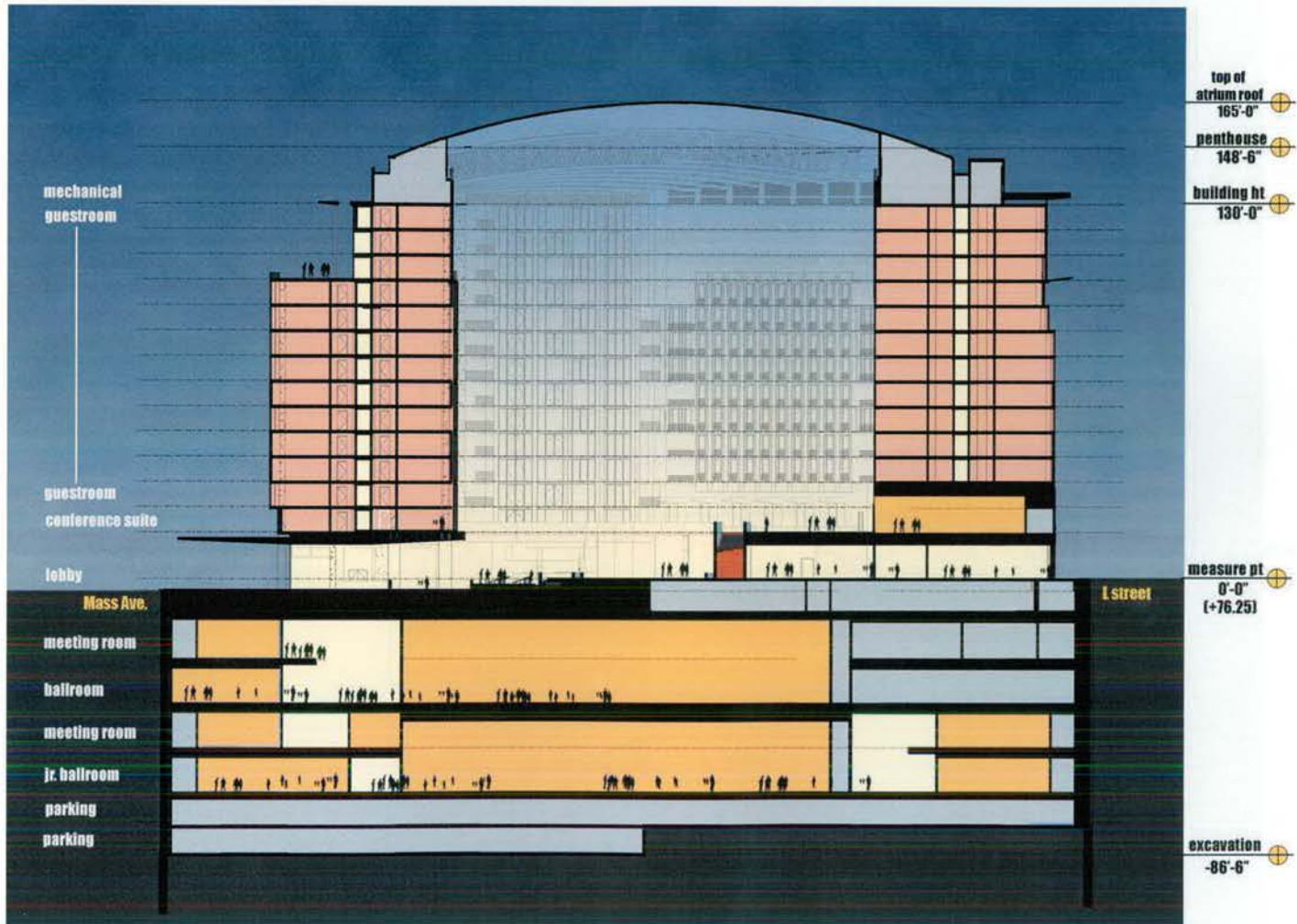


THE COOPER CARRY - TVS
COLLABORATIVE
2700 PROMENADE TWO
1230 PEACHTREE STREET N.E.
ATLANTA, GEORGIA 30309-3581
404-888-6600 FAX: 404-888-6700

© COOPER CARRY INC.

PROJECT WASHINGTON D.C. MARRIOTT MARQUIS			
TITLE BUILDING ELEVATION - L STREET			
SCALE 1" = 40'-0"	DATE 08-08-2008	REFERENCES	PROJECT NO. 207203 3058-000

DWG NO
PUD 370
A-303



SECOND SUBMISSION

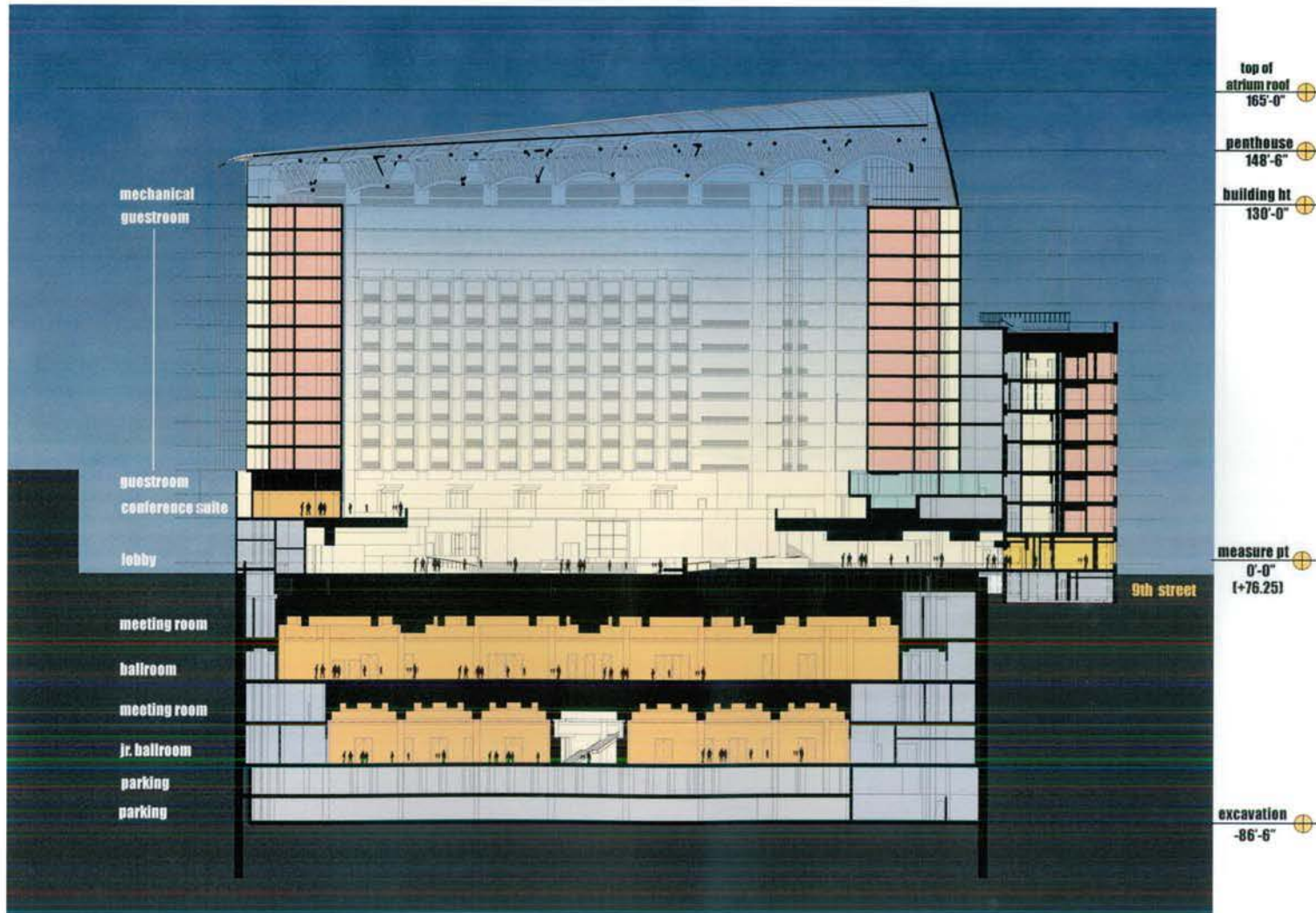


THE COOPER CARRY - TVS
COLLABORATIVE
2706 PROMENADE TWO
1200 PEACHTREE STREET N.E.
ATLANTA, GEORGIA 30309-3597
404-888-8800 FAX: 404-888-6700

© COOPER CARRY INC.

PROJECT	WASHINGTON D.C. MARRIOTT MARQUIS		
TITLE	BUILDING SECTIONS - NS		
SCALE	DATE	REFERENCES	PROJECT NO.
1" = 40'-0"	08-08-2008		207700 3056-000

DWG NO.	PUD 370
	A-401



SECOND SUBMISSION



THE COOPER CARRY - TVS
COLLABORATIVE
2700 PROMENADE TWO
1230 PEACHTREE STREET N.E.
ATLANTA, GEORGIA 30309-3591
404-888-6800 FAX: 404-888-6700

© COOPER CARRY INC

PROJECT		WASHINGTON D.C. MARRIOTT MARQUIS	
TITLE			
BUILDING SECTION - EW			
SCALE	DATE	REFERENCES	PROJECT NO.
1" = 40'-0"	08-08-2008		20702 3058-000

DWG NO.
PUD 370
A-402



THE CORNER OF MASS. AVENUE AND 9TH STREET

SECOND SUBMISSION



THE COOPER CARRY - TVS
COLLABORATIVE
2700 PROMENADE TWO
1230 PEACHTREE STREET N.E.
ATLANTA, GEORGIA 30309-3591
404-855-6000 FAX: 404-898-8700

© COOPER CARRY INC.

PROJECT	WASHINGTON D.C. MARRIOTT MARQUIS		
TITLE	STREET LEVEL ELEVATION VIGNETTES		
SCALE	DATE	REFERENCES	PROJECT NO.
NTS	08-08-2008		207302 3058-000

DWG NO.
PUD 370
A-501



MASS . AVENUE

SECOND SUBMISSION



THE COOPER CARRY - TVS
COLLABORATIVE
2700 PROMENADE TWO
1230 PEACHTREE STREET N.E.
ATLANTA, GEORGIA 30309-3591
404-888-6602 FAX: 404-888-6700

© COOPER CARRY INC.

PROJECT			
WASHINGTON D.C. MARRIOTT MARQUIS			
TITLE			
STREET LEVEL ELEVATION VIGNETTES			
SCALE	DATE	REFERENCES	PROJECT NO.
NTS	08-08-2008		207292 2008-000

DWG NO.
PUD 370
A-502



SECOND SUBMISSION



THE COOPER CARRY - tvs
COLLABORATIVE
2700 PROMENADE TWO
1230 PEACHTREE STREET N.E.
ATLANTA, GEORGIA 30309-2991
404-888-6900 FAX: 404-888-6700

© COOPER CARRY INC.

PROJECT		WASHINGTON D.C. MARRIOTT MARQUIS	
TITLE			
PERSPECTIVE VIEW			
SCALE	DATE	REFERENCES	PROJECT NO.
NTS	08-08-2008		307709 3058-000

DWG NO.
PUD 370
A-503



SECOND SUBMISSION



THE COOPER CARRY - tvs
COLLABORATIVE
2702 PROMENADE 11ND
1230 PEACHTREE STREET N.E.
ATLANTA, GEORGIA 30309-3591
404-886-6500 FAX 404-889-6700

© COOPER CARRY INC.

PROJECT		WASHINGTON D.C. MARRIOTT MARQUIS	
TITLE			
PERSPECTIVE VIEW			
SCALE	DATE	REFERENCES	PROJECT NO.
Author	08-08-2008		207202 3056-000

DWG NO.
PUD 370
A-504



SECOND SUBMISSION



THE COOPER CARRY - TVS
COLLABORATIVE
2700 PROMENADE TWO
1230 PEACHTREE STREET N.E.
ATLANTA, GEORGIA 30309-3591
404-888-6600 FAX 404-888-6700

© COOPER CARRY INC.

PROJECT	WASHINGTON D.C. MARRIOTT MARQUIS		
TITLE	PERSPECTIVE VIEW		
SCALE	DATE	REFERENCES	PROJECT NO.
NTS	08-08-2008		307203 3058-000

DWG NO.
PUD 370
A-505



SECOND SUBMISSION

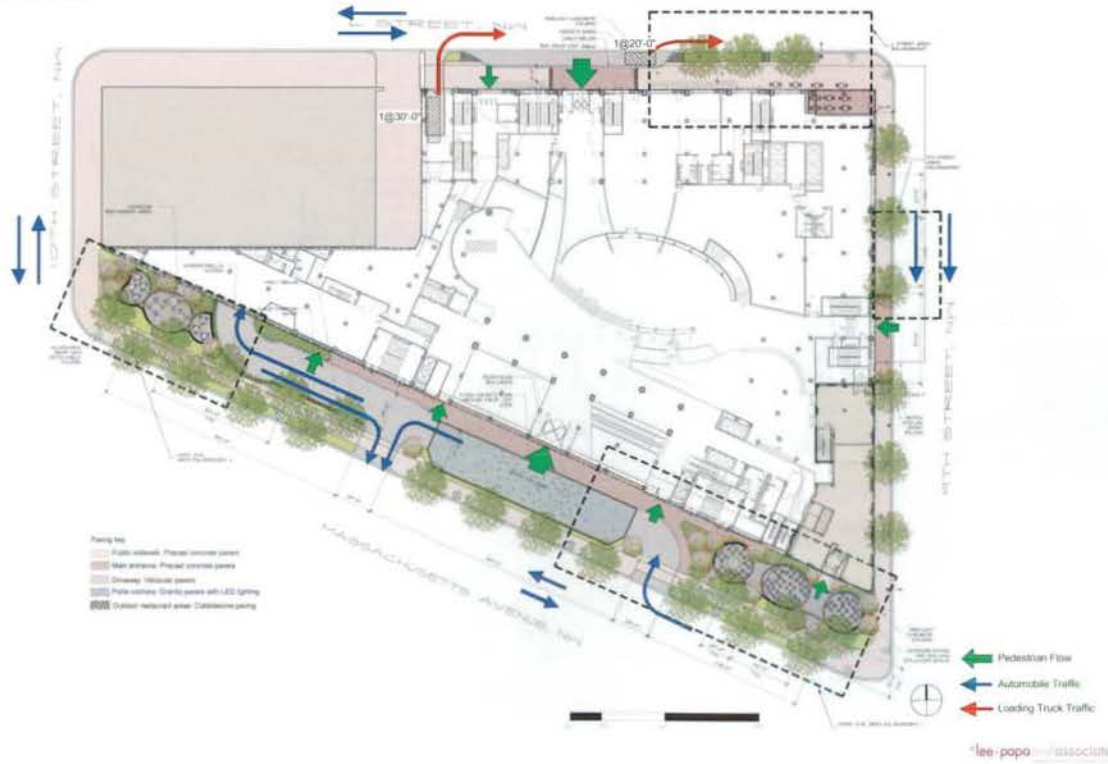


THE COOPER CARRY - tvs COLLABORATIVE 2700 PROMENADE TWO 1230 PEACHTREE STREET N.E. ATLANTA, GEORGIA 30339-3591 404-888-6600 FAX 404-888-6700		PROJECT WASHINGTON D.C. MARRIOTT MARQUIS	
		TITLE PERSPECTIVE VIEW	
SCALE Author	DATE 08-08-2008	REFERENCES	PROJECT NO. 207200 3058-000

DWG NO:	PUD 370
	A-506

© COOPER CARRY INC.

MARRIOTT MARQUIS - PLAN VIEW



date:08.05.2008



SECOND SUBMISSION



THE COOPER CARRY - tvs
 COLLABORATIVE
 2700 PROMENADE TING
 1230 PEACHTREE STREET N.E.
 ATLANTA, GEORGIA 30309-3081
 404-888-6000 FAX 404-888-6100

© COOPER CARRY INC.

PROJECT WASHINGTON D.C. MARRIOTT MARQUIS			
TITLE CIRCULATION PLAN			
SCALE AS NOTED	DATE 08-08-2008	REFERENCES	PROJECT NO. 307700 3058-000

DWG NO. PUD 370 A-601



MARRIOTT MARQUIS
WASHINGTON CONVENTION CENTER
901 MASSACHUSETTS AVENUE



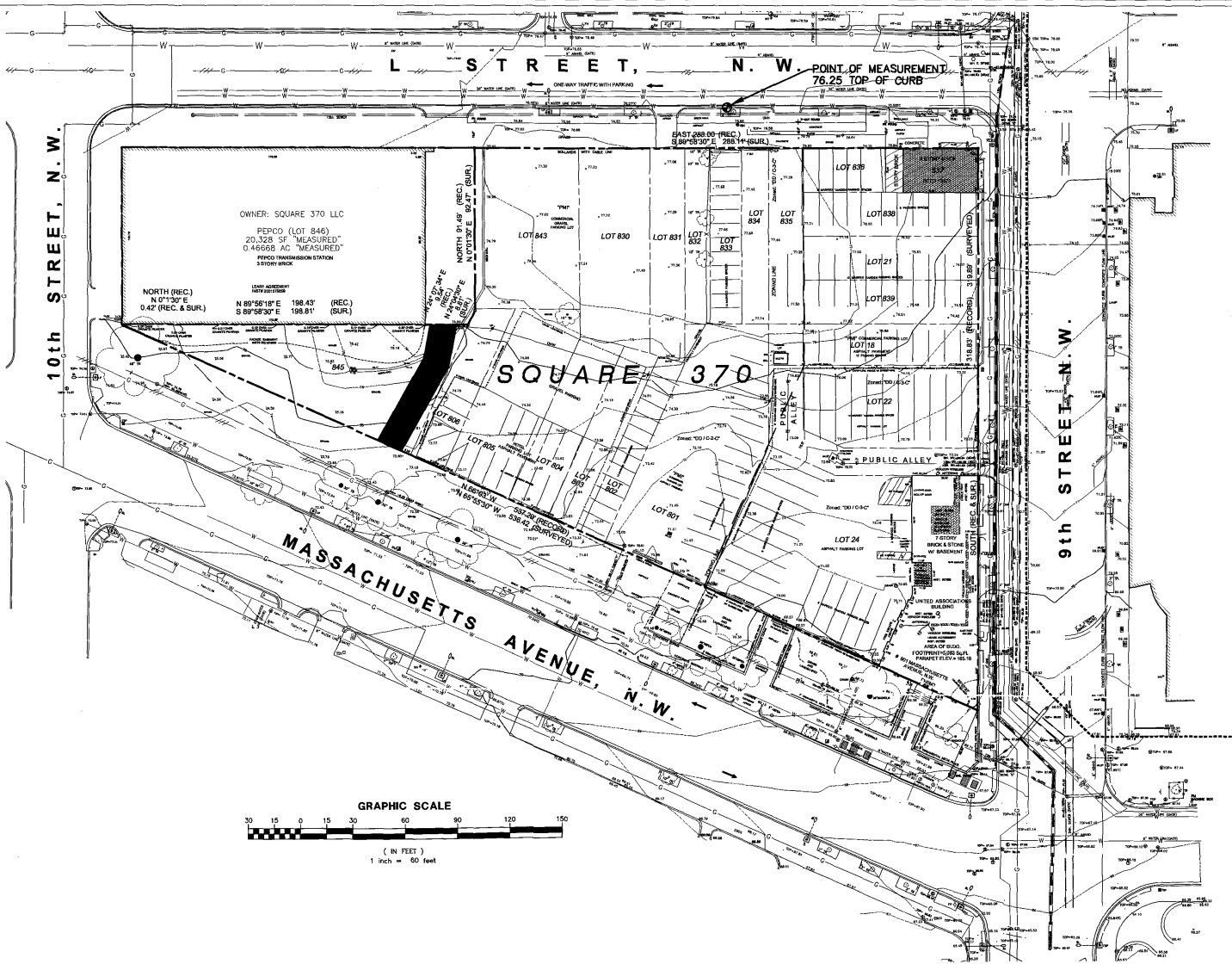
DRAWING TITLES

- C 1.0 COVER SHEET
- C 1.1 CONTEXT PLAN
- C 1.2 EXISTING CONDITIONS PLAN
- C 2.0 SITE PLAN
- C 2.1 SITE UTILITY PLAN
- C 2.2 EROSION & SEDIMENT CONTROL PLAN
- C 2.3 EROSION & SEDIMENT CONTROL DETAILS

SECOND SUBMISSION

<p>HOTEL OPERATOR MARRIOTT INTERNATIONAL, INC. MARRIOTT DRIVE, DEPT 70/100.03 BETHESDA, MD 20817 TEL: 301-380-6964 FAX: 301-380-1992 ATTN: WILLIAM GROVER</p>	<p>DEVELOPER QUADRANGLE DEVELOPMENT 1001 G STREET, NW SUITE 700W WASHINGTON, DC 20001 TEL: 202-393-1999 FAX: 202-393-0548 ATTN: ROBERT J. KNOFF</p>	<p>OWNER WASHINGTON CONVENTION CENTER 801 MOUNT VERNON PLACE, NW WASHINGTON, DC 20001 TEL: 202-249-3000 ATTN: JOHN COLLINS</p>	<div style="text-align: center;">  <small>A. MONTGOMERY THOMAS AND ASSOCIATES, INC. CONSULTING ENGINEERS 10 G STREET N.W., SUITE 400, WASHINGTON, DC 20002 (202) 397-8822 FAX (202) 397-8822 EMAIL: AMT@AMTENGINEERING.COM</small> </div> <table border="1" style="width: 100%; border-collapse: collapse;"> <tr> <td colspan="4" style="text-align: center;">PROJECT WASHINGTON D.C. MARRIOTT MARQUIS</td> </tr> <tr> <td colspan="4" style="text-align: center;">TITLE COVER SHEET</td> </tr> <tr> <td style="width: 25%;">SCALE</td> <td style="width: 25%;">DATE</td> <td style="width: 25%;">REFERENCES</td> <td style="width: 25%;">AMT PROJECT NO.</td> </tr> <tr> <td></td> <td style="text-align: center;">08/08/08</td> <td></td> <td style="text-align: center;">DC08-028</td> </tr> </table>	PROJECT WASHINGTON D.C. MARRIOTT MARQUIS				TITLE COVER SHEET				SCALE	DATE	REFERENCES	AMT PROJECT NO.		08/08/08		DC08-028
PROJECT WASHINGTON D.C. MARRIOTT MARQUIS																			
TITLE COVER SHEET																			
SCALE	DATE	REFERENCES	AMT PROJECT NO.																
	08/08/08		DC08-028																

DWG. NO.
PUD 370
C-1.0



- LEGEND**
- TOP OF WALL
 - TRUNK C&M
 - UNDER TRAY LINE
 - TRAY SIGNAL POLE
 - TRAY SIGNAL BOX
 - BOX
 - PARKING METER
 - UTILITY MANHOLE
 - TELEPHONE POLE
 - TELEPHONE MANHOLE
 - GROUND SIGN
 - SM. SIGN
 - GLASS VALVE
 - WATER VALVE
 - WATER METER
 - WATER MANHOLE
 - FIRE HYDRANT
 - SEE VALVE
 - POST
 - ISLAND
 - TRUCK PLATES
 - ADJACENT LOT BUILDING

**Plumbers and Pipe Fitters Building
#901 Massachusetts Avenue, N.W.**

Floor Elevations:
Elevations at North inside wall of building. Floors 2, 3, 4, 5, and 7 are carpeted thus cannot verify if false flooring exists.

Elevations on DCDPW vertical Datum.

Basement	=	64.10
First Floor	=	75.23
Second Floor	=	88.29
Third Floor	=	99.23
Fourth Floor	=	110.47
Fifth Floor	=	121.58
Sixth Floor	=	132.71
Seventh Floor	=	143.74

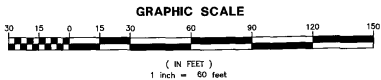
Legal Description

of all inclusive Record Lots 18, 21, 22, 24 and A&T Lots 901 through 906, 930 through 935, 943 and 945 in Square 370

Point of Beginning at the south easterly corner of Square Three-hundred Seventy (370) also being the intersection of the westerly line of Massachusetts Avenue, N.W. (60 feet wide) and the westerly line of 9th Street, N.W. (60 feet wide); thence due east and beginning point and building Massachusetts Avenue, N.W.

1. Record North 60° 00' 00" West, 337.27 feet; Surveyed North 60° 00' 00" West, 336.43 feet, thence
2. Record East 198.43 feet; Surveyed North 0° 00' 00" East, 0.43 feet, thence
3. Record East, 198.43 feet; Surveyed South 89° 59' 30", 198.81 feet, thence
4. Record North 24° 09' 34" East, 9.54 feet; Surveyed North 24° 09' 30" East, 8.51 feet, thence
5. Record North, 51.49 feet; Surveyed North 0° 01' 30" East, 52.47 feet, thence
6. Record East, 298.00 feet; Surveyed South 89° 59' 30" East, 388.11 feet, thence
7. Record South, 318.83 feet; Surveyed South, 319.89 feet, to point of beginning.

Containing Record 82,609 Square Feet or 1.9664 acre per District of Columbia Surveyor-Official; Surveyed 82,619 Square Feet or 1.96281 Acre

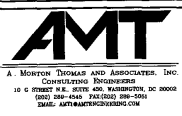


SECOND SUBMISSION

HOTEL OPERATOR
MARRIOTT INTERNATIONAL, INC.
MARRIOTT DRIVE, DEPT 70/100.03
BETHESDA, MD 20817
TEL: 301-380-6964
FAX: 301-380-1992
ATTN: WILLIAM GROVER

DEVELOPER
QUADRANGLE DEVELOPMENT
1001 G STREET, NW
SUITE 700W
WASHINGTON, DC 20001
TEL: 202-393-1999
FAX: 202-393-0548
ATTN: ROBERT J. KNOPF

OWNER
WASHINGTON CONVENTION CENTER
801 MOUNT VERNON PLACE, NW
WASHINGTON, DC 20001
TEL: 202-249-3000
ATTN: JOHN COLLINS



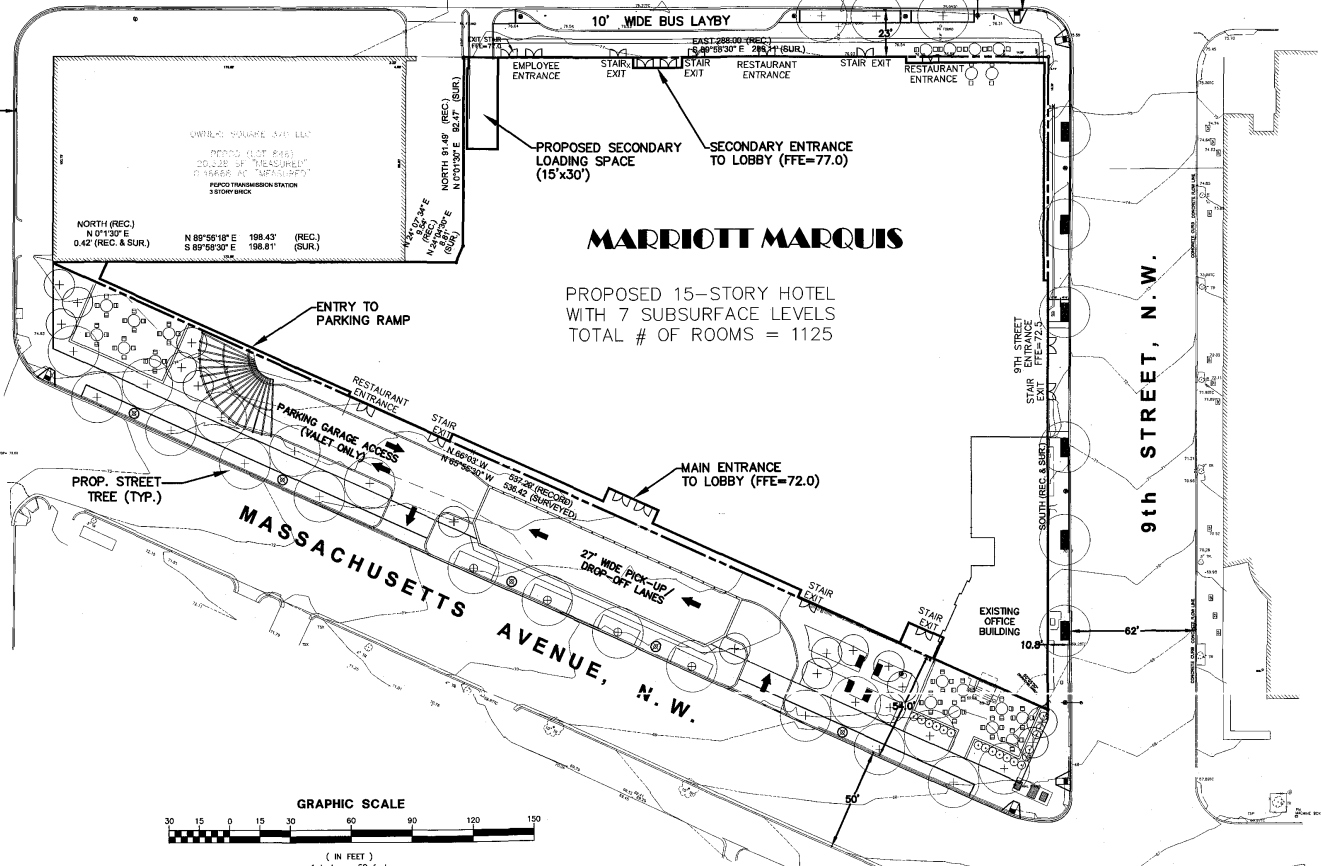
PROJECT WASHINGTON D.C. MARRIOTT MARQUIS			
TITLE EXISTING CONDITIONS PLAN			
SCALE 1" = 60'	DATE 08/08/08	REFERENCES	AMT PROJECT NO. DC09-029

DWG NO. PUD 370
C-1.2

10th STREET, N.W.

L STREET, N.W.

9th STREET, N.W.



MARRIOTT MARQUIS

PROPOSED 15-STORY HOTEL WITH 7 SUBSURFACE LEVELS
TOTAL # OF ROOMS = 1125

TABULATION OF DEVELOPMENT DATA:

SQUARE 370: LOTS 843, 830, 831, 833, 834, 835, 838, 21, 839, 18, 22, 24, 801, 802, 803, 804, 805, 806, 845

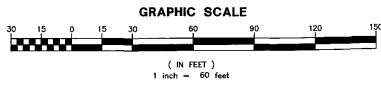
EXISTING SITE AREA: 77,564

EXISTING ZONING: DD/C-3-C AND DD/C-2-C

EXISTING USE: PARKING LOTS/OFFICE BUILDING

PROPOSED USE: MARRIOTT MARQUIS HOTEL

DISTURBED AREA: 127,944 SF

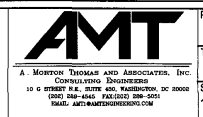


SECOND SUBMISSION

HOTEL OPERATOR
MARRIOTT INTERNATIONAL, INC.
MARRIOTT DRIVE, DEPT 70/100.03
BETHESDA, MD 20817
TEL: 301-380-6964
FAX: 301-380-1992
ATTN: WILLIAM GROVER

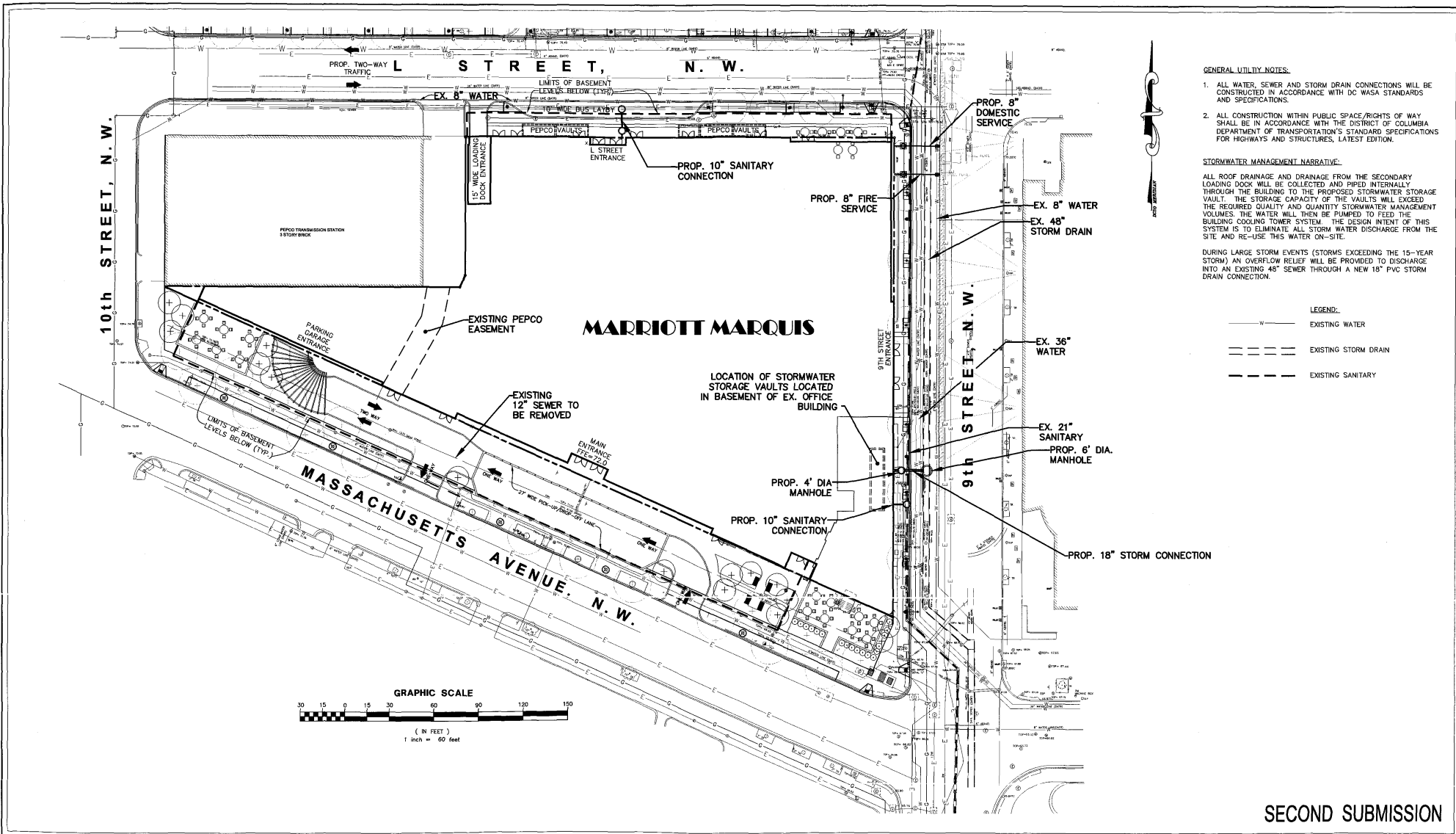
DEVELOPER
QUADRANGLE DEVELOPMENT
1001 G STREET, NW
SUITE 700W
WASHINGTON, DC 20001
TEL: 202-393-1999
FAX: 202-393-0548
ATTN: ROBERT J. KNOFF

OWNER
WASHINGTON CONVENTION CENTER
801 MOUNT VERNON PLACE, NW
WASHINGTON, DC 20001
TEL: 202-249-3000
ATTN: JOHN COLLINS



PROJECT	WASHINGTON D.C. MARRIOTT MARQUIS		
TITLE	SITE PLAN		
SCALE	DATE	REFERENCES	AMT PROJECT NO.
1" = 60'	08/08/08		DC08-029

DWG NO.
PUD 370
C-2.0



- GENERAL UTILITY NOTES:**
1. ALL WATER, SEWER AND STORM DRAIN CONNECTIONS WILL BE CONSTRUCTED IN ACCORDANCE WITH DC WASA STANDARDS AND SPECIFICATIONS.
 2. ALL CONSTRUCTION WITHIN PUBLIC SPACE/RIGHTS OF WAY SHALL BE IN ACCORDANCE WITH THE DISTRICT OF COLUMBIA DEPARTMENT OF TRANSPORTATION'S STANDARD SPECIFICATIONS FOR HIGHWAYS AND STRUCTURES, LATEST EDITION.

STORMWATER MANAGEMENT NARRATIVE:

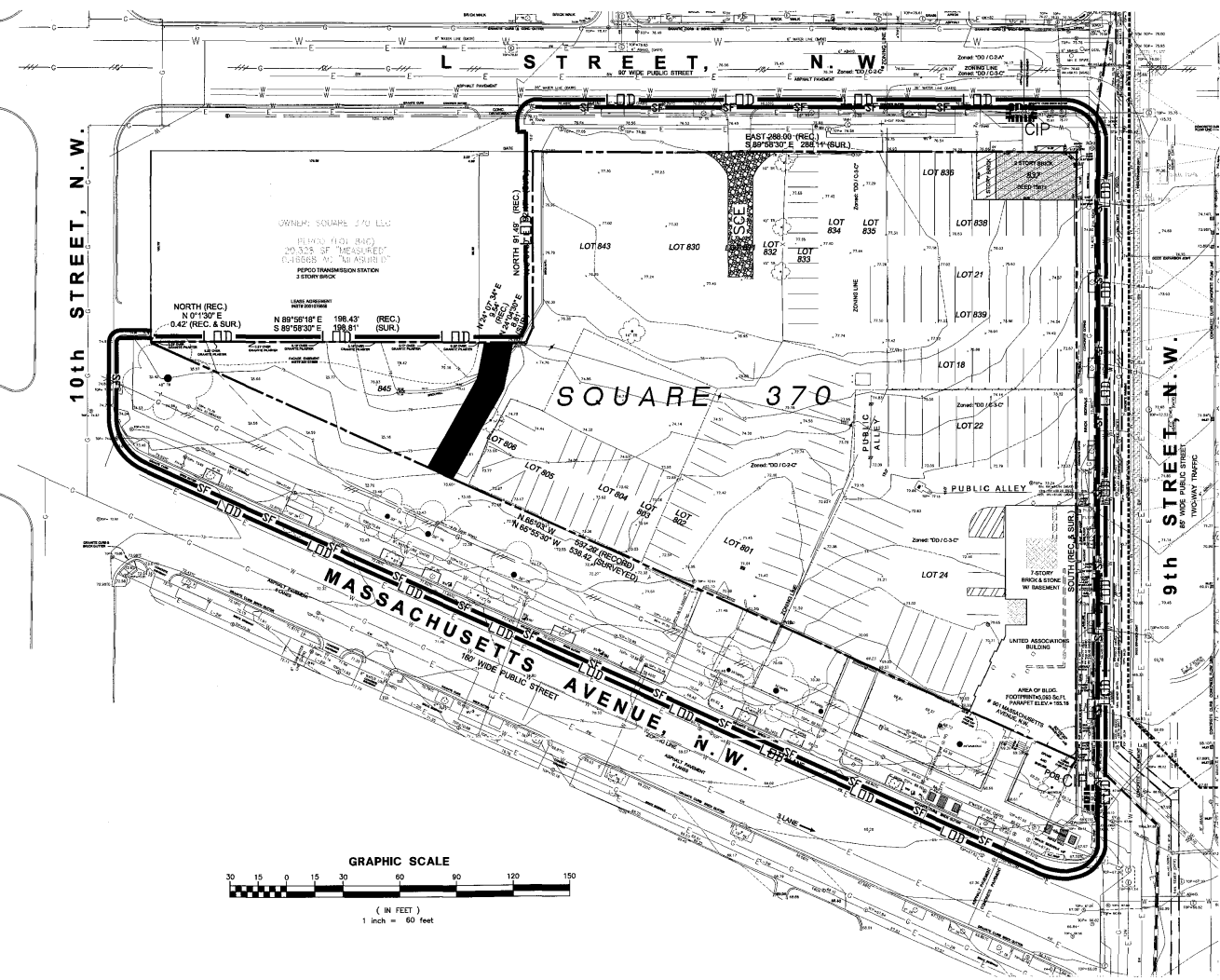
ALL ROOF DRAINAGE AND DRAINAGE FROM THE SECONDARY LOADING DOCK WILL BE COLLECTED AND PIPED INTERNALLY THROUGH THE BUILDING TO THE PROPOSED STORMWATER STORAGE VAULT. THE STORAGE CAPACITY OF THE VAULTS WILL EXCEED THE REQUIRED QUALITY AND QUANTITY STORMWATER MANAGEMENT VOLUMES. THE WATER WILL THEN BE PUMPED TO FEED THE BUILDING COOLING TOWER SYSTEM. THE DESIGN INTENT OF THIS SYSTEM IS TO ELIMINATE ALL STORM WATER DISCHARGE FROM THE SITE AND RE-USE THIS WATER ON-SITE.

DURING LARGE STORM EVENTS (STORMS EXCEEDING THE 15-YEAR STORM) AN OVERFLOW RELIEF WILL BE PROVIDED TO DISCHARGE INTO AN EXISTING 48" SEWER THROUGH A NEW 18" PVC STORM DRAIN CONNECTION.

- LEGEND:**
- W — EXISTING WATER
 - S — EXISTING STORM DRAIN
 - SAN — EXISTING SANITARY

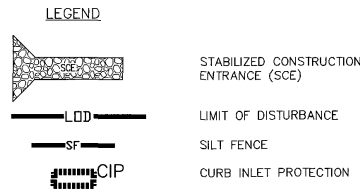
SECOND SUBMISSION

<p>HOTEL OPERATOR MARRIOTT INTERNATIONAL, INC. MARRIOTT DRIVE, DEPT 70/100.03 BETHESDA, MD 20817 TEL: 301-380-6964 FAX: 301-380-1992 ATTN: WILLIAM GROVER</p>	<p>DEVELOPER QUADRANGLE DEVELOPMENT 1001 G STREET, NW SUITE 700W WASHINGTON, DC 20001 TEL: 202-393-1999 FAX: 202-393-0548 ATTN: ROBERT J. KNOPF</p>	<p>OWNER WASHINGTON CONVENTION CENTER 801 MOUNT VERNON PLACE, NW WASHINGTON, DC 20001 TEL: 202-249-3000 ATTN: JOHN COLLINS</p>	<p>AMT <small>A. MORFON THOMAS AND ASSOCIATES, INC. CONSULTING ENGINEERS 10 G STREET N.E., SUITE 420, WASHINGTON, DC 20002 (202) 391-4642 FAX: (202) 391-4644 EMAIL: AMT@AMTENGINEERS.COM</small></p>	<p>PROJECT WASHINGTON D.C. MARRIOTT MARQUIS</p> <p>TITLE SITE UTILITY AND STORM DRAIN/SWM PLAN</p> <p>SCALE 1" = 60'</p> <p>DATE 08/08/08</p> <p>REFERENCES</p> <p>AMT PROJECT NO. DC08-029</p>	<p>DWG NO. PUD 370 C-2.1</p>
--	---	--	---	--	---



- EROSION CONTROL SEQUENCE OF CONSTRUCTION**
1. ALL EROSION AND SEDIMENT CONTROL MEASURES SHALL BE INSTALLED PRIOR TO OR AS THE FIRST STEP IN GRADING OR DEMOLITION. PROVIDE TEMPORARY STORAGE CONSTRUCTION ENTRANCE AS SHOWN.
 - PROVIDE CLEAN WATER SOURCE AND HOSE TO CLEAN ALL EQUIPMENT LEAVING SITE.
 - INSTALL PERIMETER EROSION AND SEDIMENT CONTROL MEASURES (CHAIN LINK CONSTRUCTION FENCE, SILT FENCE) AS SHOWN.
 - INSTALL INLET PROTECTION AT EXISTING STORM DRAIN INLETS AS SHOWN ON THIS PLAN.
 2. CONDUCT SELECT DEMOLITION ACTIVITIES ACCORDING TO THE APPLICABLE PLANS. NO DISTURBED ARE WILL BE DEMOLVED FOR MORE THAN 7 CALENDAR DAYS.
 3. INSTALL THE NECESSARY TEMPORARY OR PERMANENT VEGETATIVE STABILIZATION MEASURES TO ACHIEVE ADEQUATE EROSION AND SEDIMENT CONTROL.
 5. INSTALL SUMP PIT(S)/PORTABLE SEDIMENT TANK(S) AS NECESSARY AND AS DIRECTED BY THE EROSION AND SEDIMENT CONTROL INSPECTOR.
 6. AS CONTRIBUTORY DRAINAGE AREAS ARE STABILIZED AND WITH THE PERMISSION OF THE EROSION AND SEDIMENT CONTROL INSPECTOR, REMOVE INDIVIDUAL EROSION AND SEDIMENT CONTROL PRACTICES.
 8. UPON COMPLETION OF LAND DISTURBING AND CONSTRUCTION ACTIVITIES, FLUSH CLEAN STORM DRAIN SYSTEMS OF ALL CONSTRUCTION DEBRIS.
 9. WITH THE APPROVAL OF THE EROSION AND SEDIMENT CONTROL INSPECTOR REMOVE ALL EROSION AND SEDIMENT CONTROL PRACTICES AND PROVIDE PERMANENT STABILIZATION ACCORDING TO APPROVED METHODS.

- EROSION & SEDIMENT CONTROL NOTES:**
1. CONTRACTOR NOT TO DISTURB ANY AREA OUTSIDE OF THE LIMITS OF DISTURBANCE (LOD).
 2. ALL CONSTRUCTION TO BE INSPECTED DAILY BY THE CONTRACTOR, AND ANY DAMAGED SITUATION OR EROSION CONTROL DEVICES OR MEASURES WILL BE REPAIRED AT THE CLOSE OF THE DAY. ALL SILT FENCE (SF) TO BE MAINTAINED IN WORKING CONDITION.
 3. STABILIZED CONSTRUCTION ENTRANCES TO BE PERIODICALLY SUPPLEMENTED WITH ADDITIONAL STONE AS NEEDED.
 4. CONTROLS CAN BE REMOVED AFTER THEIR CONTRIBUTING AREAS HAVE BEEN PERMANENTLY STABILIZED, AND APPROVAL OF INSPECTOR IS OBTAINED.
 5. ALL CONSTRUCTION AND RESTORATION OF PAVEMENT SURFACES, IN PUBLIC SPACE, SHALL BE IN ACCORDANCE WITH DDOT STANDARDS AND SPECIFICATIONS.



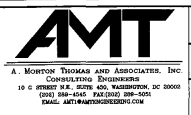
SITE TABULATION
LIMITS OF DISTURBANCE = 127,944 SF

SECOND SUBMISSION

HOTEL OPERATOR
MARRIOTT INTERNATIONAL, INC.
MARRIOTT DRIVE, DEPT 70/100.03
BETHESDA, MD 20817
TEL: 301-380-6964
FAX: 301-380-1992
ATTN: WILLIAM GROVER

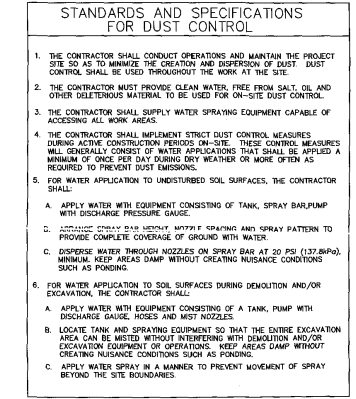
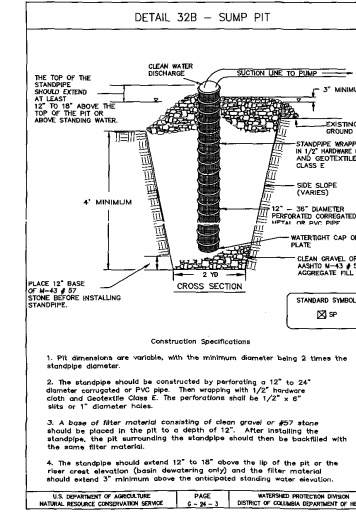
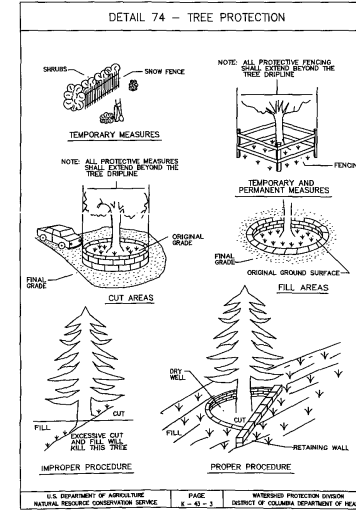
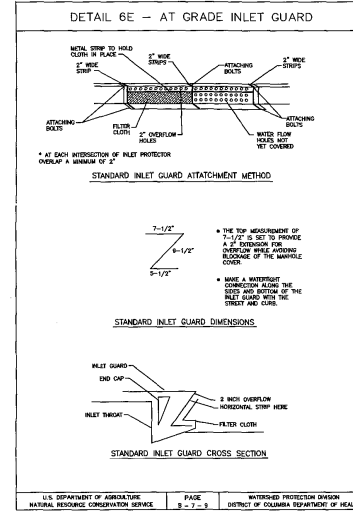
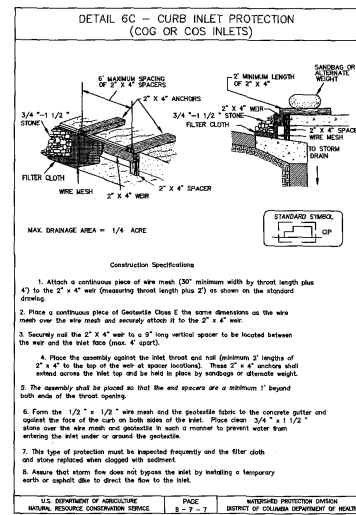
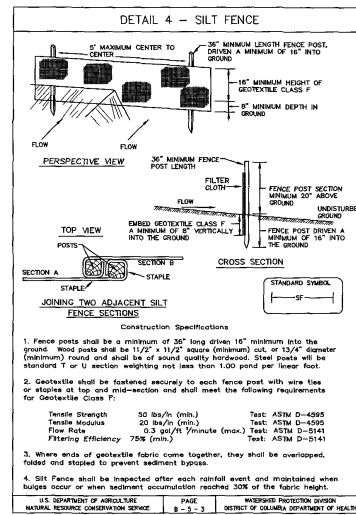
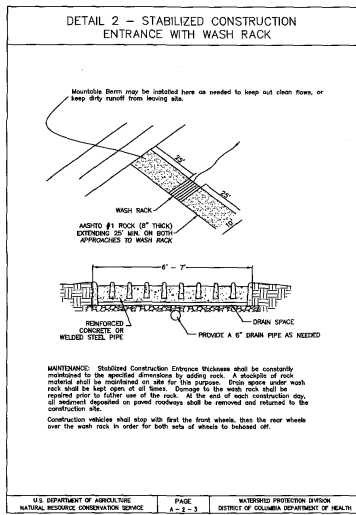
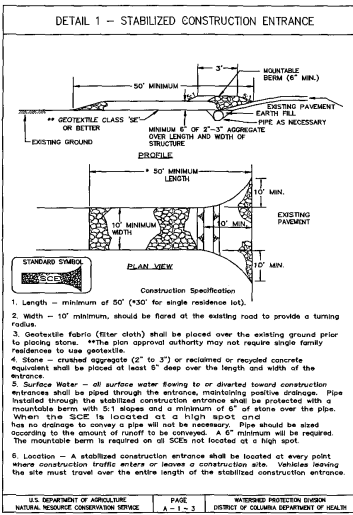
DEVELOPER
QUADRANGLE DEVELOPMENT
1001 G STREET, NW
SUITE 700W
WASHINGTON, DC 20001
TEL: 202-393-1999
FAX: 202-393-0548
ATTN: ROBERT J. KNOPF

OWNER
WASHINGTON CONVENTION CENTER
801 MOUNT VERNON PLACE, NW
WASHINGTON, DC 20001
TEL: 202-249-3000
ATTN: JOHN COLLINS



PROJECT	WASHINGTON D.C. MARRIOTT MARQUIS		
TITLE	EROSION & SEDIMENT CONTROL PLAN		
SCALE	DATE	REFERENCES	AMT PROJECT NO.
1" = 60'	08/08/08		DC08-029

DWG NO.
PUD 370
C-2.2



SECOND SUBMISSION

HOTEL OPERATOR
MARRIOTT INTERNATIONAL, INC.
MARRIOTT DRIVE, DEPT 70/100.03
BETHESDA, MD 20817
TEL: 301-380-6364
FAX: 301-380-1992
ATTN: WILLIAM GROVER

DEVELOPER
QUADRANGLE DEVELOPMENT
1001 G STREET, NW
SUITE 700W
WASHINGTON, DC 20001
TEL: 202-393-1999
FAX: 202-393-0548
ATTN: ROBERT J. KNOPF

OWNER
WASHINGTON CONVENTION CENTER
801 MOUNT VERNON PLACE, NW
WASHINGTON, DC 20001
TEL: 202-249-3000
ATTN: JOHN COLLINS

AMT
A MORROW THOMAS AND ASSOCIATES, INC.
CORPORATE HEADQUARTERS
10 G STREET N.E., SUITE 400, WASHINGTON, DC 20002
TEL: 202-462-7000
FAX: 202-462-7001
EMAIL: AMT@AMTDC.COM

PROJECT	WASHINGTON D.C. MARRIOTT MARQUIS		
TITLE	EROSION & SEDIMENT CONTROL DETAILS		
SCALE	DATE	REFERENCES	AMT PROJECT NO.
N/A	08/08/08		DC08-029

DWG NO.
PUD 370
C-2.3