

FOR CLARIFICATION OF BUILDING MATERIALS SEE A-351.1

FOR MATERIALS SEE SHEET A-350

NOTE: FOR LOCATIONS OF COMPONENTS SEE SHEETS A-301 THROUGH A-304

FINAL CONSOLIDATED PUD SUBMISSION



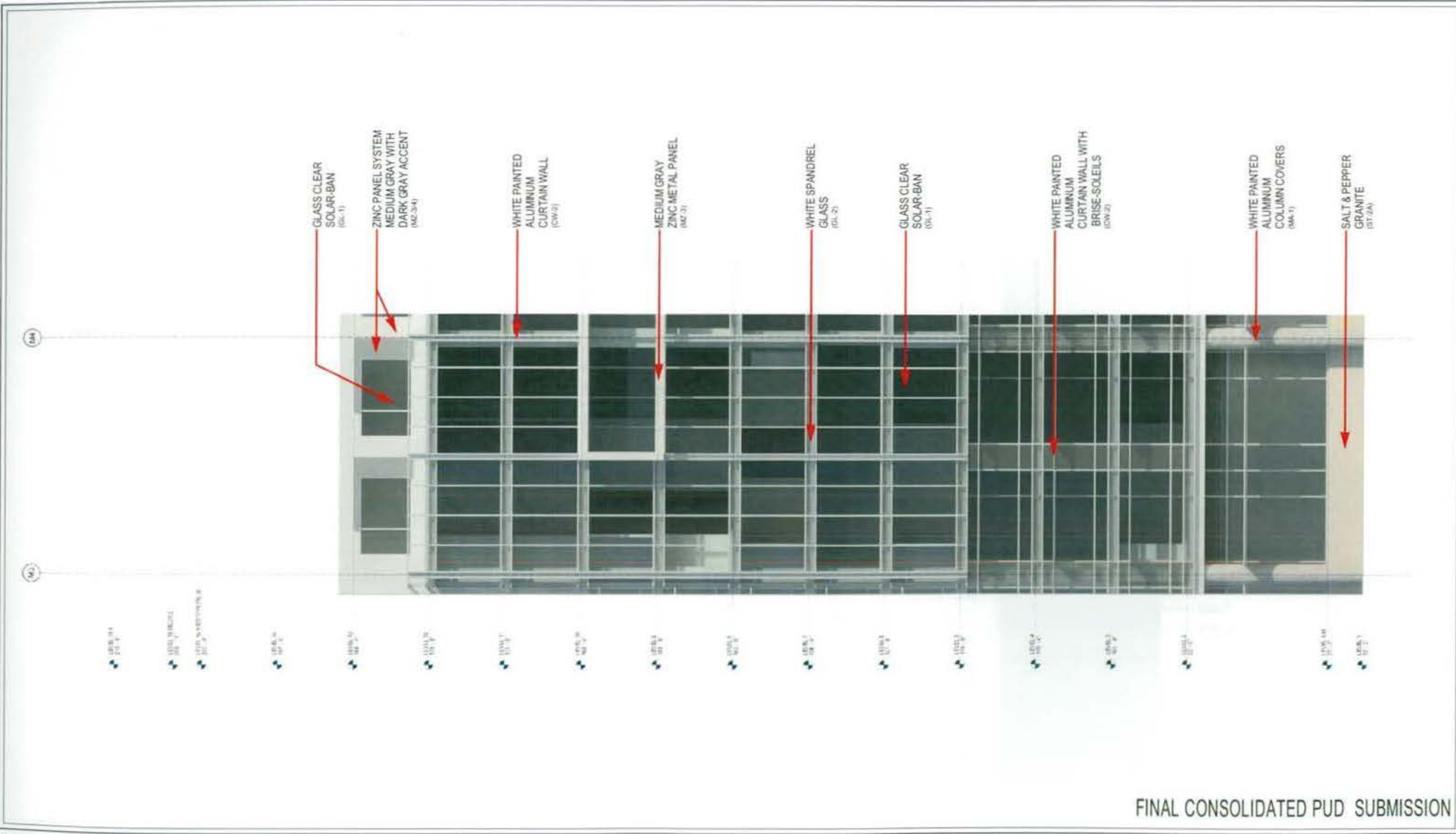
THE COOPER CARRY + tvs COLLABORATIVE
 3620 PIEDMONT ROAD N.E. SUITE 300
 ATLANTA, GEORGIA 30305-1565
 404.237.2000 FAX: 404.237.0276

© 2008 COOPER CARRY INC.

PROJECT: WASHINGTON D.C. MARRIOTT MARQUIS		
TITLE: ENLARGED BLDG SKIN COMPONENT - MASS AVE 1		
SCALE:	DATE: 02.13.2009	REFERENCES:

ZONING COMMISSION
 District of Columbia
 CASE NO.08-13
 EXHIBIT NO.60A2

DWG NO	PUD 370
	A-351



FINAL CONSOLIDATED PUD SUBMISSION



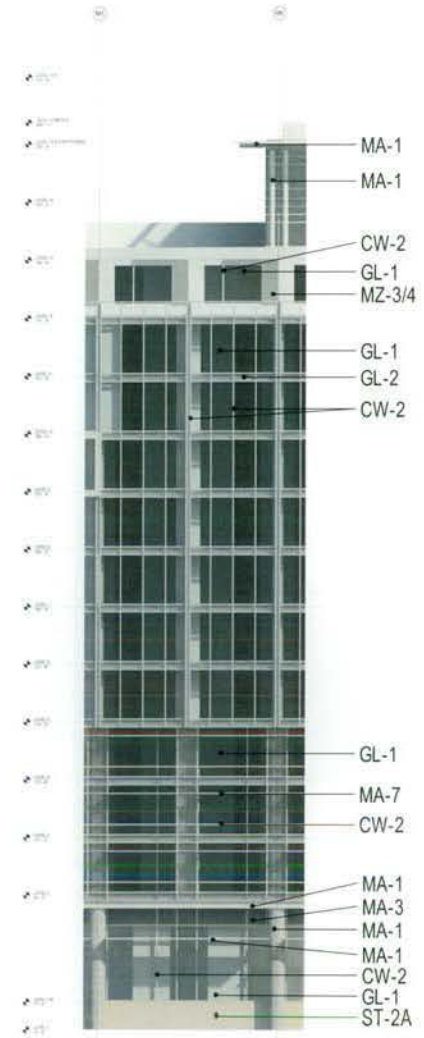
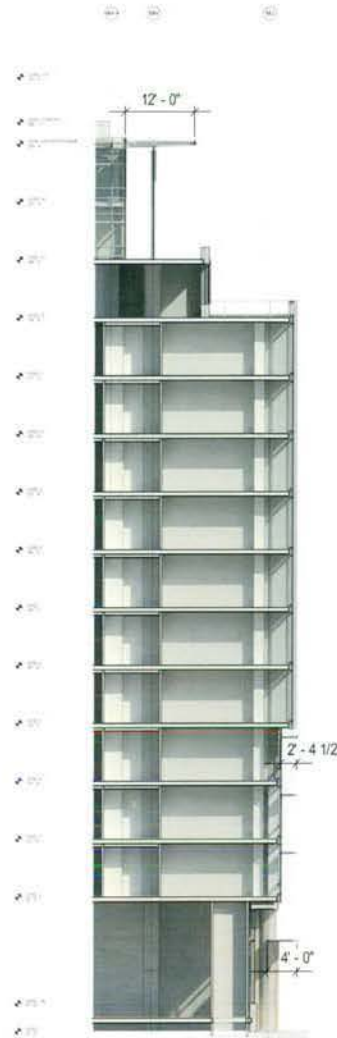
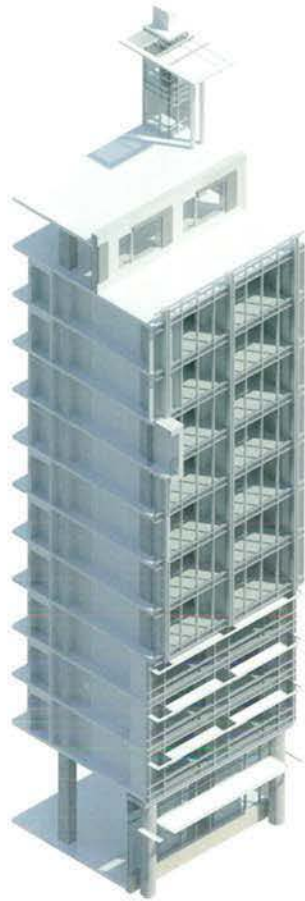
THE COOPER CARRY - TVS
COLLABORATIVE

3110 FIDELITY ROAD N.E. SUITE 200
ATLANTA, GEORGIA 30328-1599
404-237-2000 FAX: 404-237-0218

© 2004 COOPER CARRY INC.

PROJECT WASHINGTON D.C. MARRIOTT MARQUIS			
TITLE ENLARGED COMPONENT ELEVATION - MASS AVE. 1			
SCALE	DATE	REFERENCES	PROJECT NO.
	02.13.2009		207202 0046-000

DWG NO.
PUD 370
A-351.1



FOR MATERIALS SEE SHEET
A-350

NOTE: FOR LOCATIONS OF
COMPONENTS SEE SHEETS
A-301 THROUGH A-304

FINAL CONSOLIDATED PUD SUBMISSION

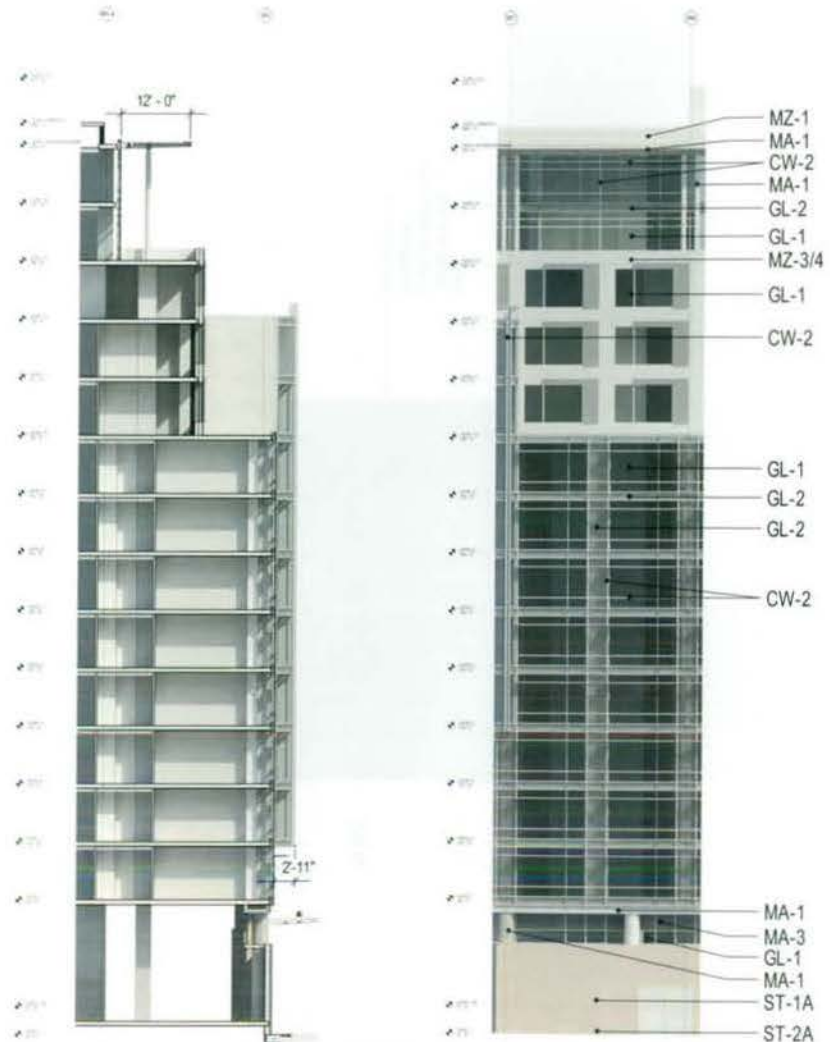


THE COOPER CARRY - tvs
COLLABORATIVE
3020 PIEDMONT ROAD N.E. SUITE 200
ATLANTA, GEORGIA 30305-1595
404-237-2000 FAX: 404-237-0276

© 2008 COOPER CARRY INC.

PROJECT WASHINGTON D.C. MARRIOTT MARQUIS			
TITLE ENLARGED BLDG SKIN COMPONENT - MASS AVE 2			
SCALE	DATE	REFERENCES	PROJECT NO.
	02.13.2009		207202 3058-000

DWG NO. PUD 370 A-352



FOR CLARIFICATION OF
BUILDING MATERIALS SEE
A-353.1

FOR MATERIALS SEE SHEET
A-350

NOTE: FOR LOCATIONS OF
COMPONENTS SEE SHEETS
A-301 THROUGH A-304

FINAL CONSOLIDATED PUD SUBMISSION

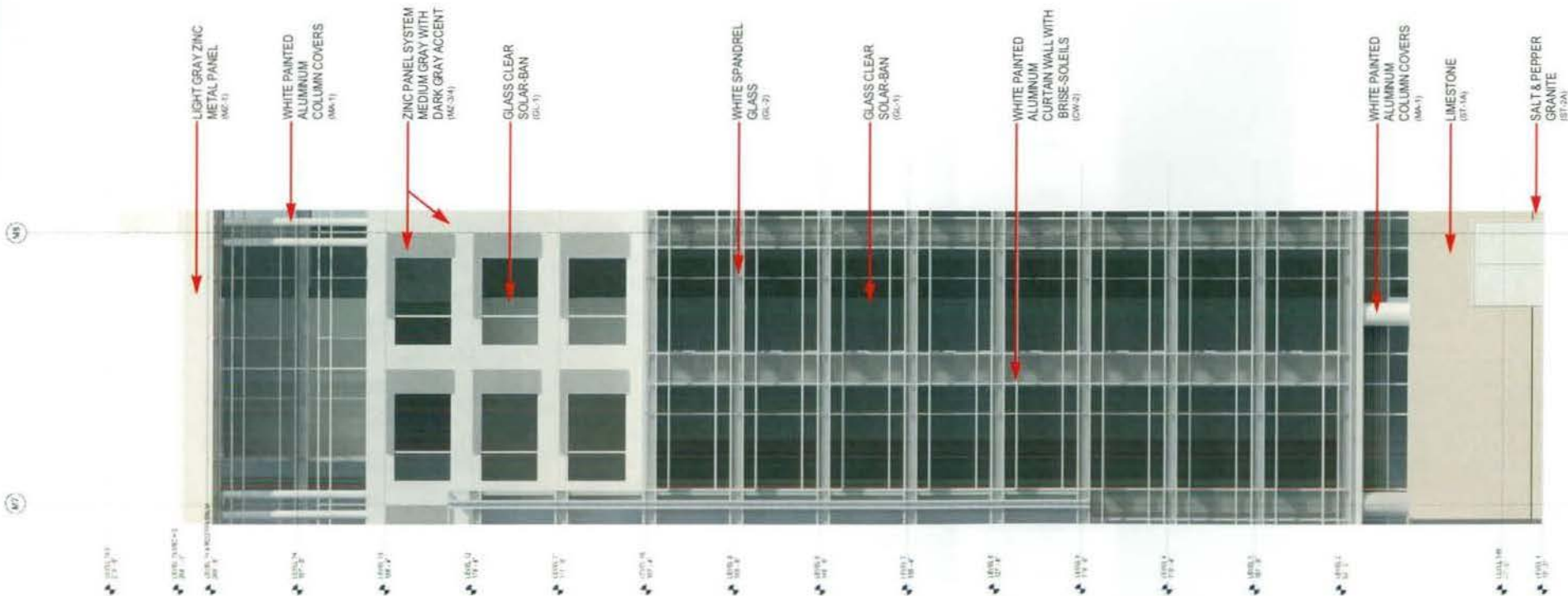


THE COOPER CARRY - TVS
COLLABORATIVE
2022 PIEDMONT ROAD N.E. SUITE 200
ATLANTA, GEORGIA 30305-1195
404.237.2000 FAX: 404.237.0276

© 2008 COOPER CARRY INC

PROJECT WASHINGTON D.C. MARRIOTT MARQUIS			
TITLE ENLARGED BLDG SKIN COMPONENT - MASS AVE 3			
SCALE	DATE	REFERENCES	PROJECT NO.
	02.13.2009		007100 3088-000

DWG NO.
PUD 370
A-353



FINAL CONSOLIDATED PUD SUBMISSION

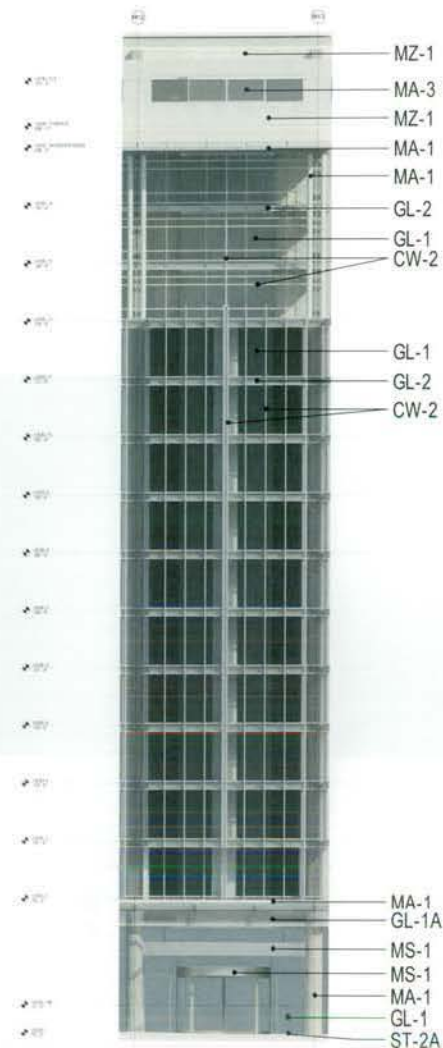
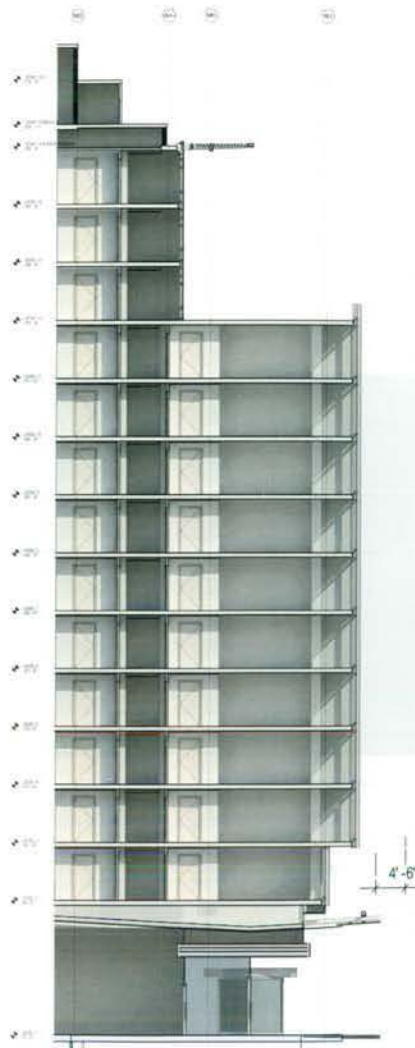


THE COOPER CARRY - TVS
COLLABORATIVE
3820 PIEDMONT ROAD N.E. SUITE 200
ATLANTA, GEORGIA 30355-1995
404.231-2000 FAX: 404.231-0276

© 2008 COOPER CARRY INC.

PROJECT		WASHINGTON D.C. MARRIOTT MARQUIS	
TITLE			
ENLARGED COMPONENT ELEVATION - MASS AVE 3			
SCALE	DATE	REFERENCES	PROJECT NO.
Author	02.13.2009		207202 3058-000

DWG NO.
PUD 370
A-353.1



FOR CLARIFICATION OF
BUILDING MATERIALS SEE
A-354.1

FOR MATERIALS SEE SHEET
A-350

NOTE: FOR LOCATIONS OF
COMPONENTS SEE SHEETS
A-301 THROUGH A-304

FINAL CONSOLIDATED PUD SUBMISSION



THE COOPER CARRY - TVS
COLLABORATIVE
3520 PIEDMONT ROAD N.E. SUITE 200
ATLANTA, GEORGIA 30305-1595
404-237-2000 FAX: 404-237-0276

© 2008 COOPER CARRY INC.

PROJECT WASHINGTON D.C. MARRIOTT MARQUIS			
TITLE ENLARGED BLDG SKIN COMPONENT - MASS AVE 4			
SCALE	DATE	REFERENCES	PROJECT NO.
Author	02.13.2009		207202 3058-000

DWG NO.
PUD 370
A-354



THE COOPER CARRY - TYS
 COLLABORATIVE
 3602 HIGHWAY 504 N. # 4000 PM
 ATLANTA, GEORGIA 30324-1554
 404-577-2000 FAX: 404-377-0776

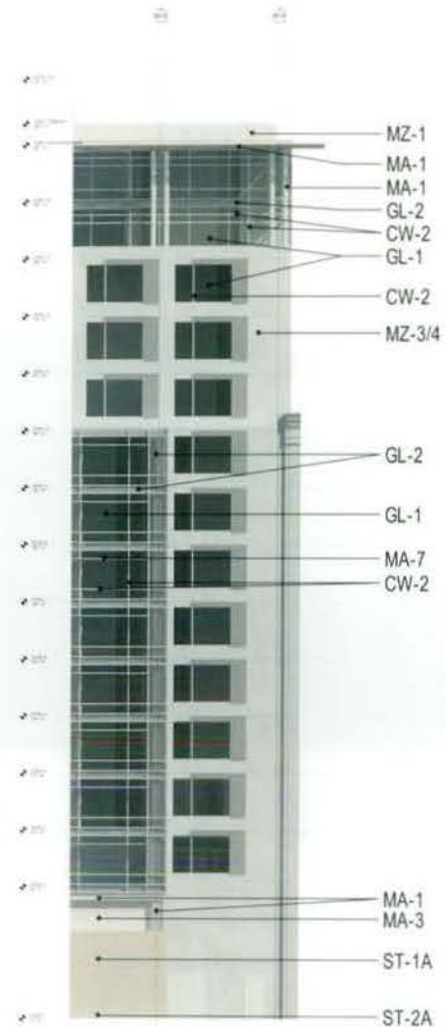
PROJECT: WASHINGTON D.C. MARRIOTT MARQUIS
 TITLE: ENLARGED COMPONENT ELEVATION - MASS AVE 4
 SCALE: Author
 DATE: 02/13/2009
 REFERENCE: PROJECT #027702
 SHEET NO: MASS 009

PROJECT: WASHINGTON D.C. MARRIOTT MARQUIS
 TITLE: ENLARGED COMPONENT ELEVATION - MASS AVE 4
 SCALE: Author
 DATE: 02/13/2009
 REFERENCE: PROJECT #027702
 SHEET NO: MASS 009

DWG NO.: PUD 370
 A-354.1

FINAL CONSOLIDATED PUD SUBMISSION





FOR CLARIFICATION OF
BUILDING MATERIALS SEE
A-355.1

FOR MATERIALS SEE SHEET
A-350

NOTE: FOR LOCATIONS OF
COMPONENTS SEE SHEETS
A-301 THROUGH A-304

FINAL CONSOLIDATED PUD SUBMISSION



THE COOPER CARRY - TVS
COLLABORATIVE
3020 FIDELITY ROAD N.E. SUITE 200
ATLANTA, GEORGIA 30305-1508
404-237-0000 FAX 404-237-0278

© 2008 COOPER CARRY INC.

PROJECT		WASHINGTON D.C. MARRIOTT MARQUIS	
TITLE			
ENLARGED BLDG SKIN COMPONENT - MASS AVE 5			
SCALE	DATE	REVISIONS	PROJECT NO.
Author	02.13.2009		207202 3058-001

DWG NO:
PUD 370
A-355

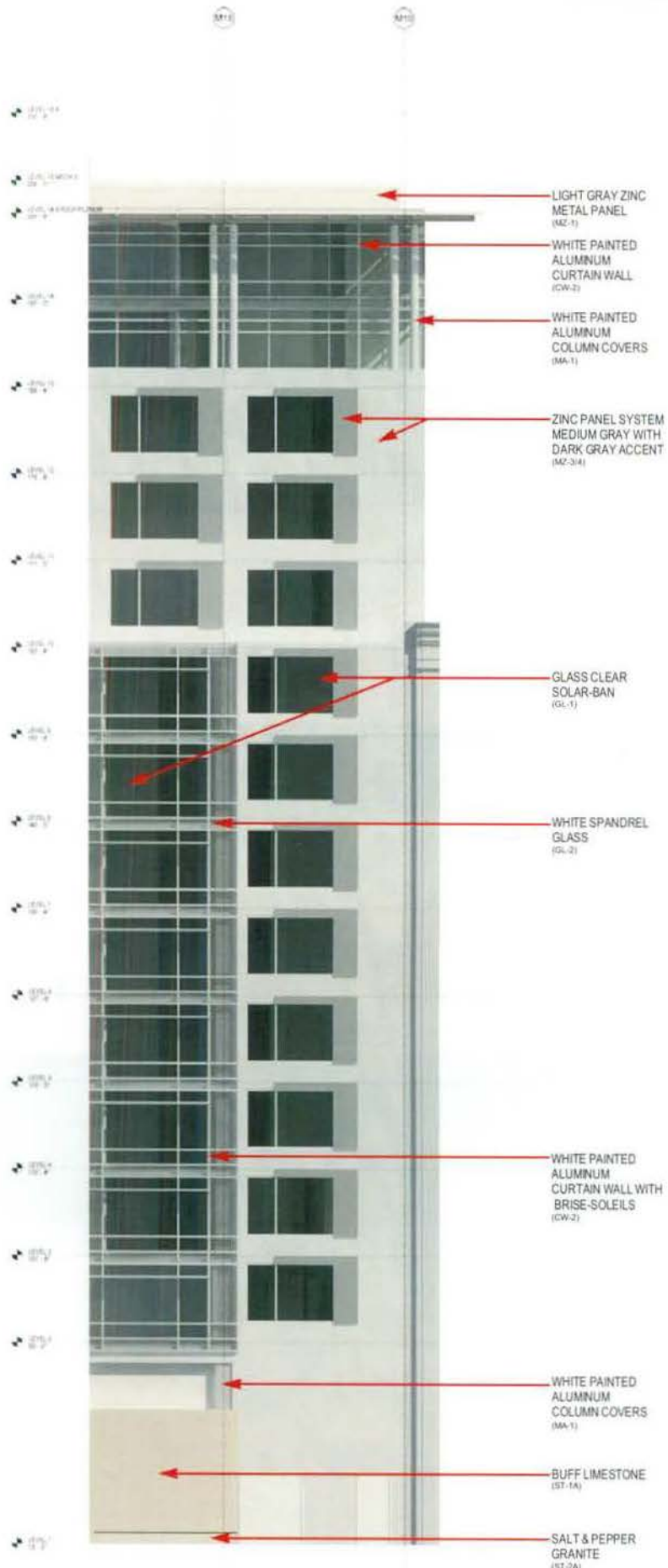


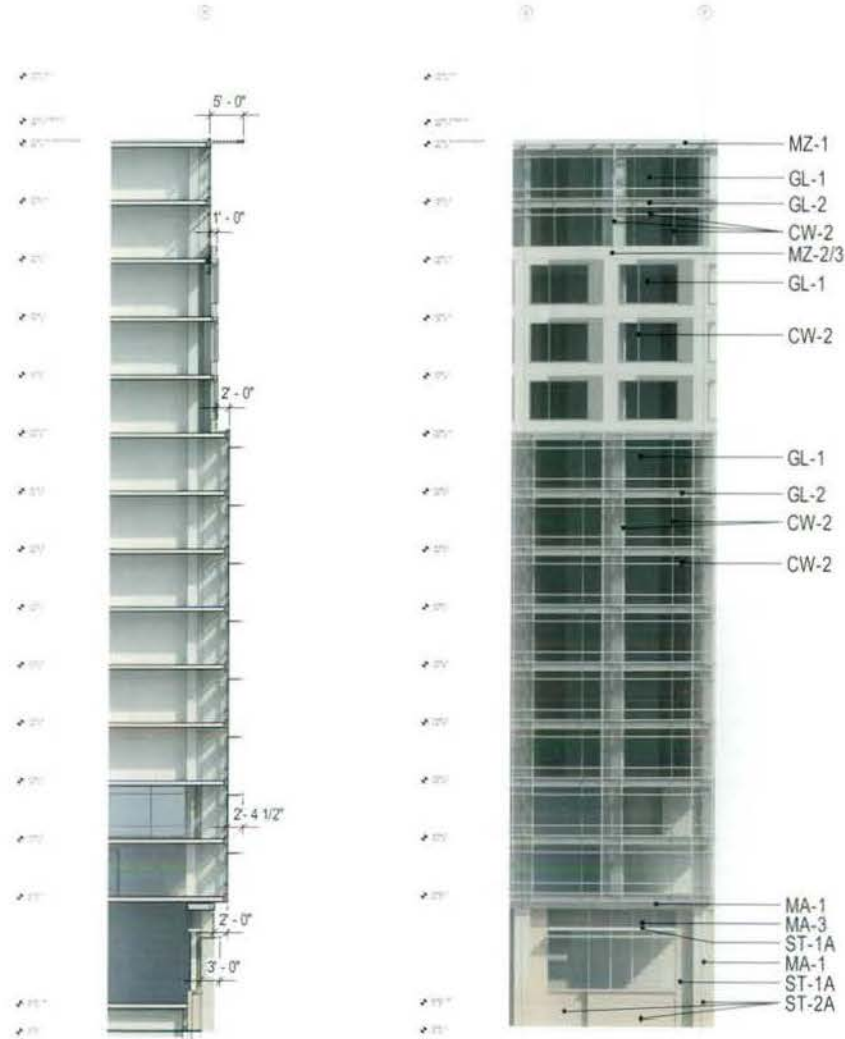
THE COOPER CARRY / TWS
 COLLABORATIVE
 280 FREDERICK ROAD, SUITE 200
 ATLANTA, GEORGIA 30333, USA
 404.577.2000 FAX 404.291.0078

PROJECT
 WASHINGTON D.C. MARRIOTT MARQUIS
 TITLE
 ENLARGED COMPONENT ELEVATION - MASS AVE 5
 DATE
 02.13.2009
 REFERENCE
 PROJECT NO.
 3000.000

PROJECT NO.
 PUD 370
 A-355.1

FINAL CONSOLIDATED PUD SUBMISSION





FOR MATERIALS SEE SHEET
A-350

NOTE: FOR LOCATIONS OF
COMPONENTS SEE SHEETS
A-301 THROUGH A-304

FINAL CONSOLIDATED PUD SUBMISSION

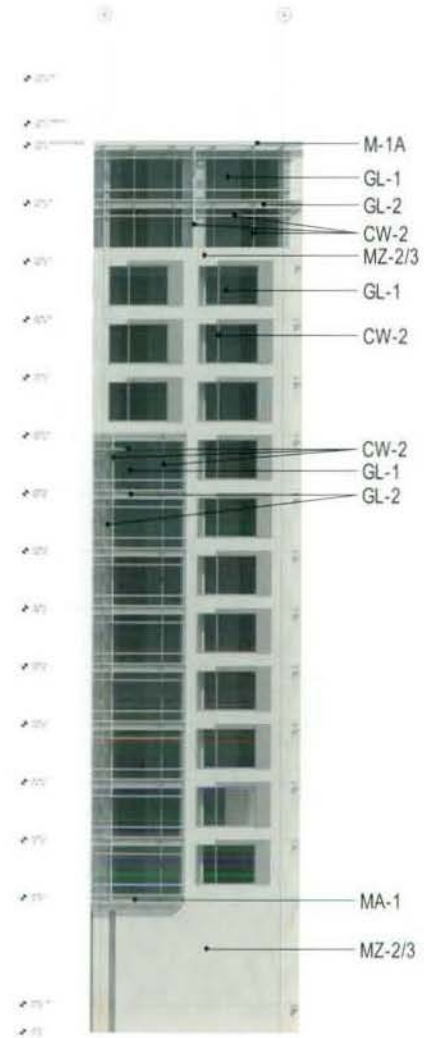
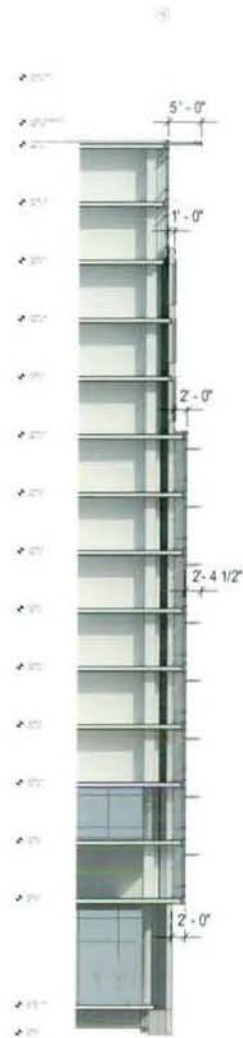


THE COOPER CARRY - TVS
COLLABORATIVE
3020 PIEDMONT ROAD N.E. SUITE 200
ATLANTA, GEORGIA 30309-1955
404-237-0000 FAX: 404-237-0276

© 2008 COOPER CARRY INC.

PROJECT		WASHINGTON D.C. MARRIOTT MARQUIS	
TITLE			
ENLARGED BLDG SKIN COMPONENT - 9TH STREET 1			
SCALE	DATE	REFERENCES	PROJECT NO.
Author	02.13.2009		257202 3048-001

DWG NO
PUD 370
A-356



FOR MATERIALS SEE SHEET
A-350

NOTE: FOR LOCATIONS OF
COMPONENTS SEE SHEETS
A-301 THROUGH A-304

FINAL CONSOLIDATED PUD SUBMISSION

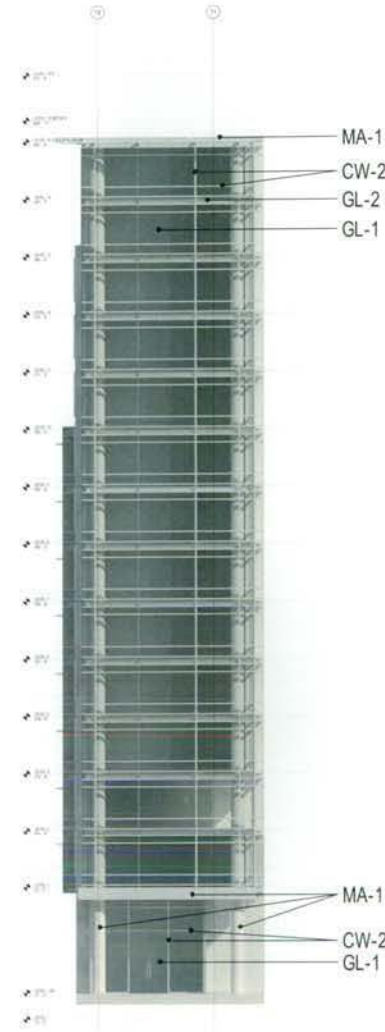
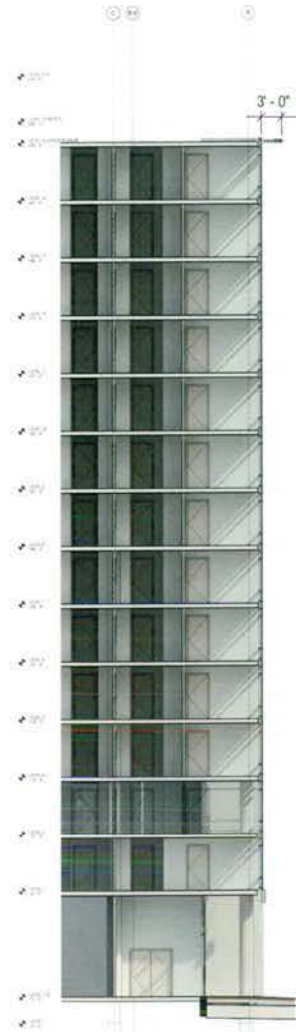


THE COOPER CARRY - TVS
COLLABORATIVE
3022 PIEDMONT ROAD N.E. SUITE 100
ATLANTA, GEORGIA 30305-1999
404-237-2000 FAX: 404-237-0276

© 2008 COOPER CARRY INC.

PROJECT WASHINGTON D.C. MARRIOTT MARQUIS			
TITLE ENLARGED BLDG SKIN COMPONENT - 9TH STREET 2			
SCALE	DATE	REFERENCES	PROJECT NO.
Author	02.13.2009		207200 3058-000

DWG NO.
PUD 370
A-357



FOR MATERIALS SEE SHEET
A-350

NOTE: FOR LOCATIONS OF
COMPONENTS SEE SHEETS
A-301 THROUGH A-304

FINAL CONSOLIDATED PUD SUBMISSION



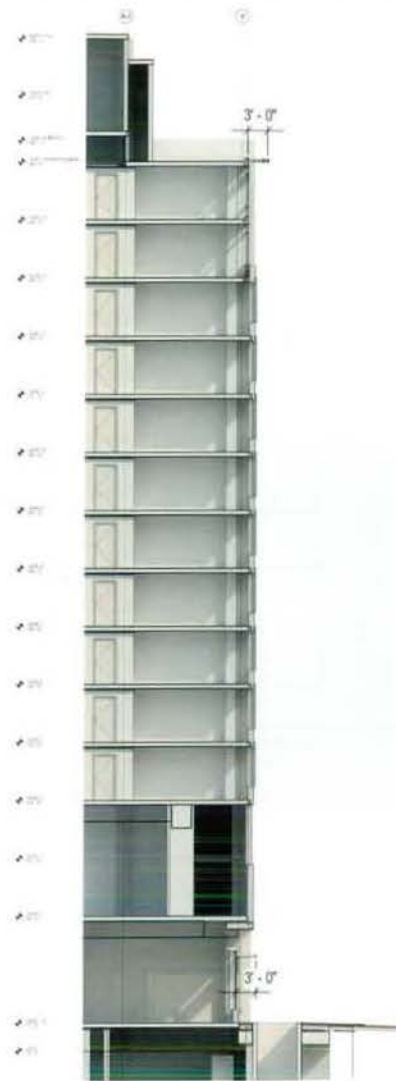
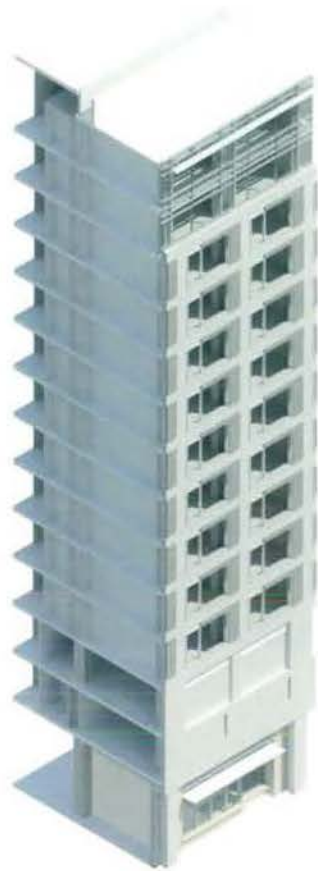
THE COOPER CARRY - TVS
COLLABORATIVE

3620 PIEDMONT ROAD N.E. SUITE 200
ATLANTA, GEORGIA 30355-1568
404-237-2000 FAX: 404-237-0278

© 2008 COOPER CARRY INC.

PROJECT				WASHINGTON D.C. MARRIOTT MARQUIS	
TITLE					
ENLARGED BLDG SKIN COMPONENT - L STREET 1					
SCALE	DATE	REFERENCES	PROJECT NO.		
Author	02.13.2009		207202 3058-000		

DRG NO:	PUD 370
	A-358



FOR CLARIFICATION OF
BUILDING MATERIALS SEE
A-359.1

FOR MATERIALS SEE SHEET
A-350

NOTE: FOR LOCATIONS OF
COMPONENTS SEE SHEETS
A-301 THROUGH A-304

FINAL CONSOLIDATED PUD SUBMISSION



THE COOPER CARRY / TVS
COLLABORATIVE
3820 FIDELITY ROAD N.E. SUITE 200
ATLANTA, GEORGIA 30306-1895
404-237-2000 FAX: 404-237-0276

© 2008 COOPER CARRY INC.

PROJECT WASHINGTON D.C. MARRIOTT MARQUIS			
TITLE ENLARGED BLDG SKIN COMPONENT - L STREET 2			
SCALE Author	DATE 02.13.2009	REFERENCES	PROJECT NO 207202 3058-001

DWG NO.
PUD 370
A-359

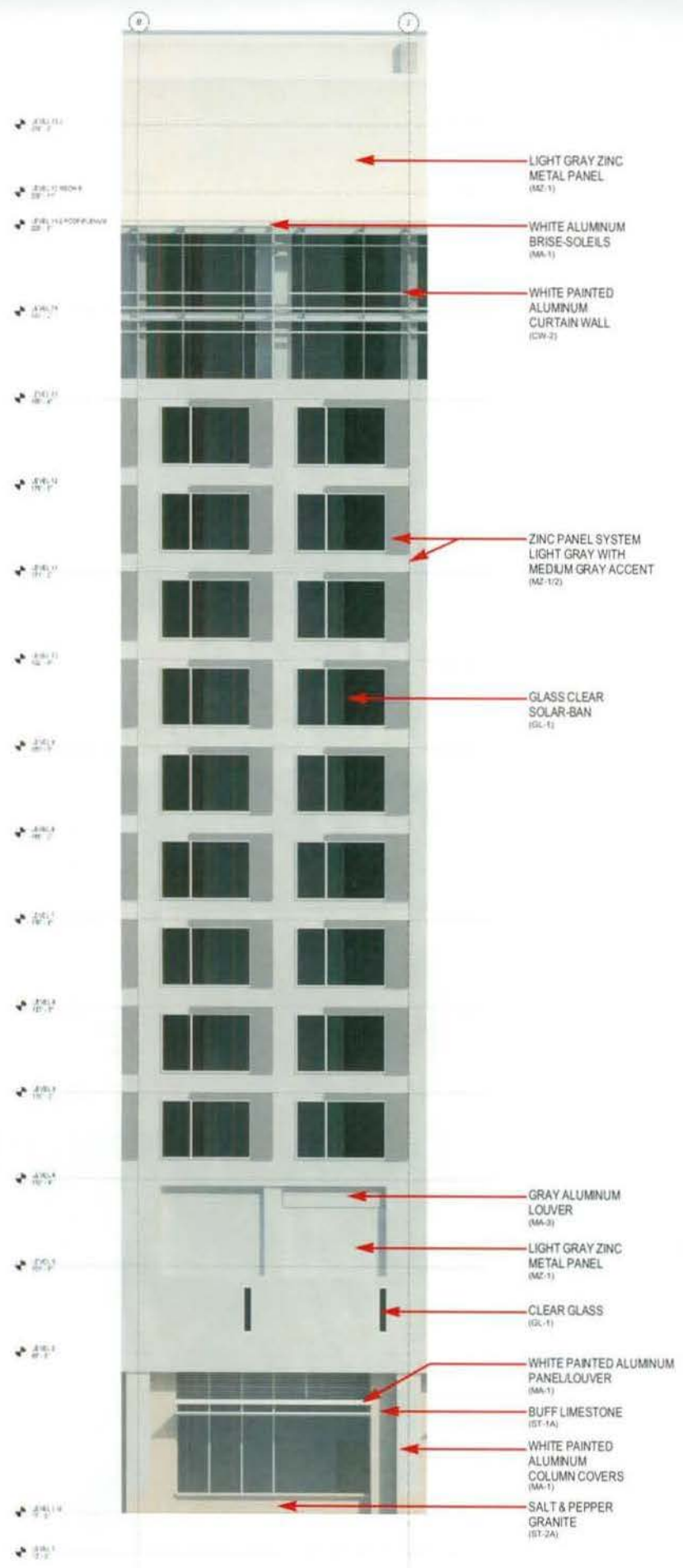
ONE 20088 21ST - 115
 20114 19TH AVE
 3000 RIVINGTON AVENUE N.E. SUITE 200
 ALUMNA, OREGON 97005-1903
 503-271-2500 FAX: 503-271-2124

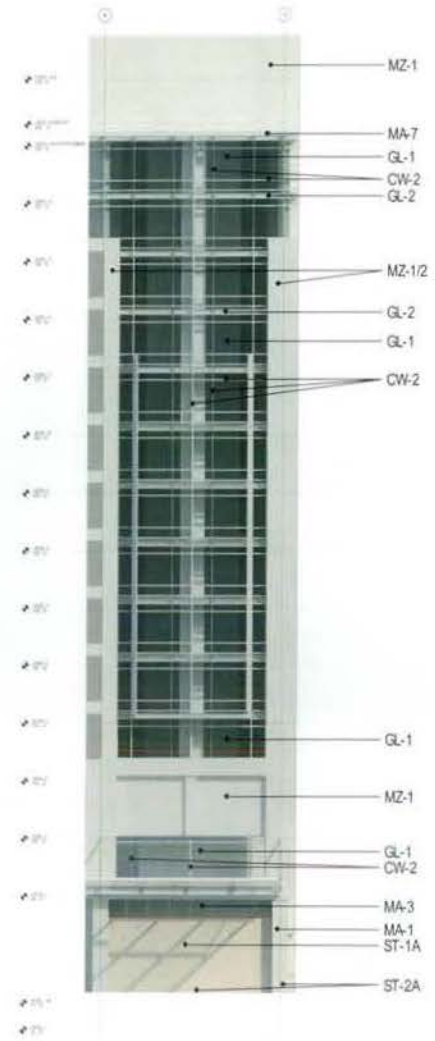
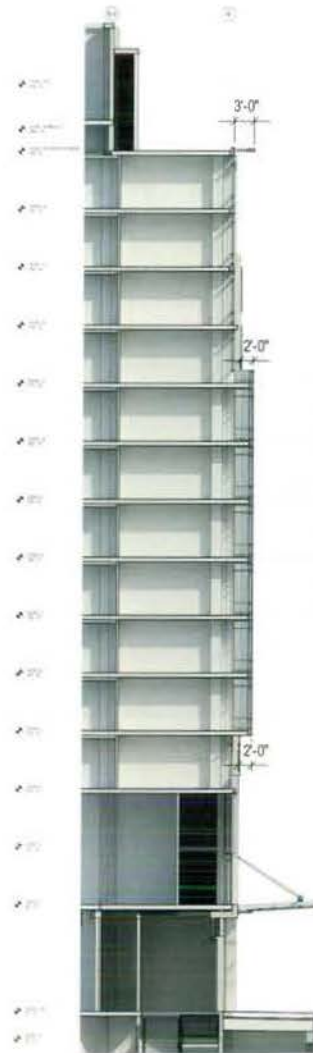
PROJECT: WASHINGTON D.C. MARRIOTT MARQUIS
 TITLE: ENLARGED COMPONENT ELEVATION - 11 STREET 2
 DATE: 02.13.2009
 PROJECT NO.: 107122
 SHEET NO.: 304 200

PROJECT: WASHINGTON D.C. MARRIOTT MARQUIS
 TITLE: ENLARGED COMPONENT ELEVATION - 11 STREET 2
 DATE: 02.13.2009
 PROJECT NO.: 107122
 SHEET NO.: 304 200

PROJECT: WASHINGTON D.C. MARRIOTT MARQUIS
 TITLE: ENLARGED COMPONENT ELEVATION - 11 STREET 2
 DATE: 02.13.2009
 PROJECT NO.: 107122
 SHEET NO.: 304 200

FINAL CONSOLIDATED PUD SUBMISSION





FOR CLARIFICATION OF
BUILDING MATERIALS SEE
A-360.1

FOR MATERIALS SEE SHEET
A-350

NOTE: FOR LOCATIONS OF
COMPONENTS SEE SHEETS
A-301 THROUGH A-304

FINAL CONSOLIDATED PUD SUBMISSION



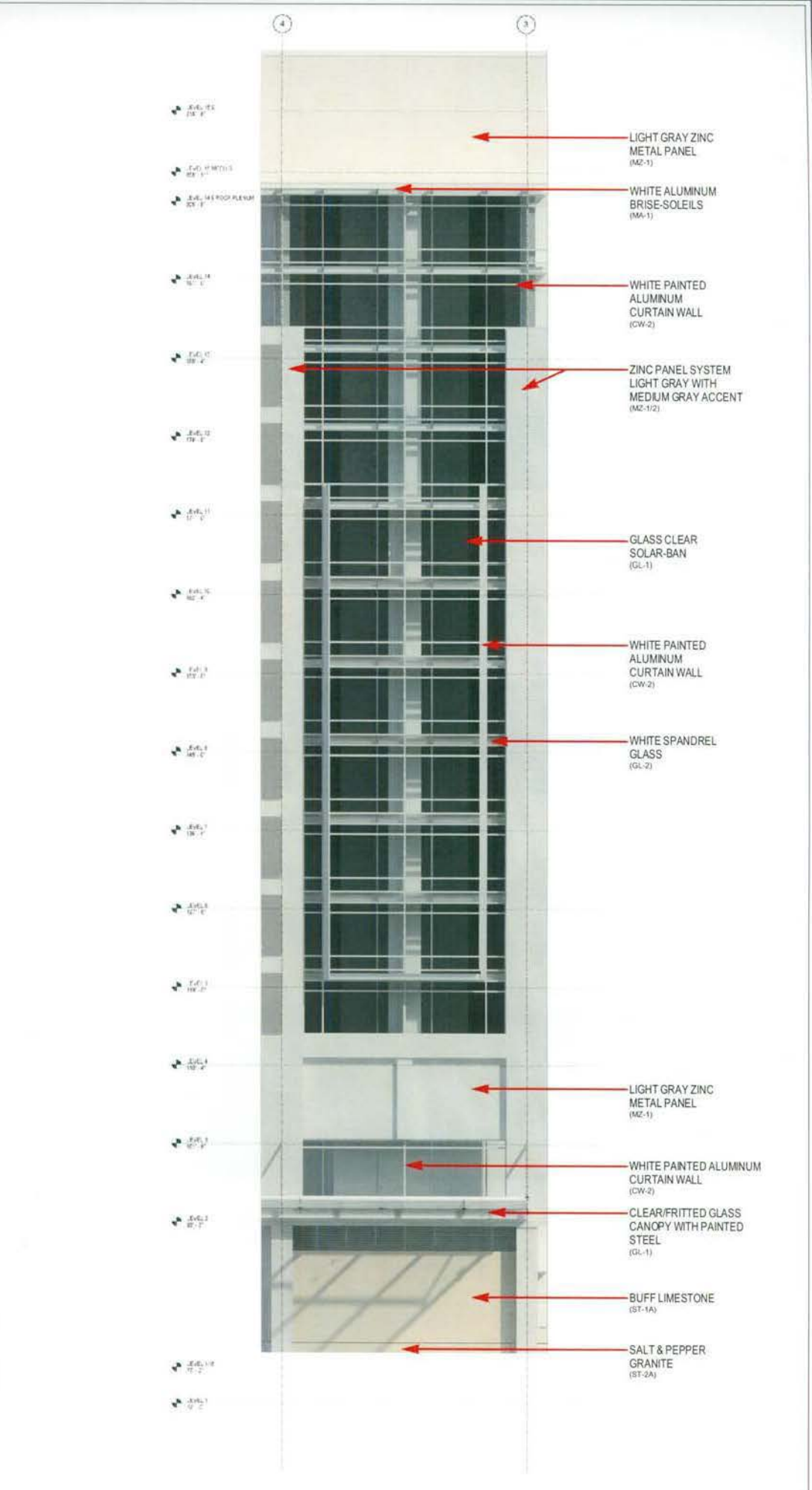
THE COOPER CARRY - TVS
COLLABORATIVE
3825 PIEDMONT ROAD N.E. SUITE 200
ATLANTA, GEORGIA 30325-1130
404.237.2000 FAX: 404.237.0716

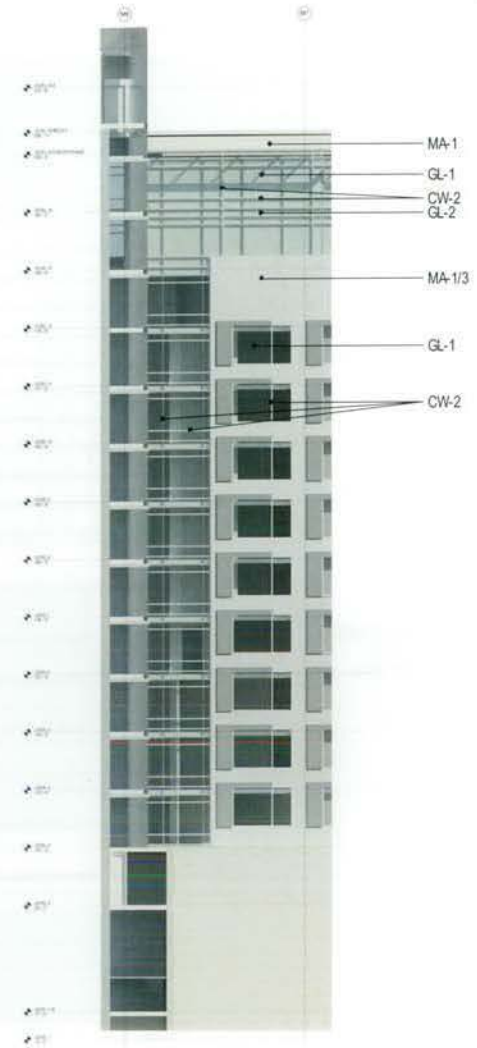
© 2009 COOPER CARRY INC.

PROJECT	WASHINGTON D.C. MARRIOTT MARQUIS		
TITLE	ENLARGED BLDG SKIN COMPONENT - L STREET 3		
SCALE	DATE	REFERENCES	PROJECT NO.
Author	02.13.2009		207502 3556-001

DWG NO.
PUD 370
A-360

FINAL CONSOLIDATED PUD SUBMISSION





FOR MATERIALS SEE SHEET
A-350

NOTE: FOR LOCATIONS OF
COMPONENTS SEE SHEETS
A-301 THROUGH A-304

FINAL CONSOLIDATED PUD SUBMISSION



THE COOPER CARRY - TVS
COLLABORATIVE
3620 PIEDMONT ROAD N.E. SUITE 200
ATLANTA, GEORGIA 30305-1999
404-237-2000 FAX: 404-237-0276

© 2008 COOPER CARRY INC

PROJECT				WASHINGTON D.C. MARRIOTT MARQUIS	
TITLE				ENLARGED BLDG SKIN COMPONENT - 10TH STREET 1	
SCALE	DATE	REFERENCES	PROJECT NO.		
Author	02.13.2009		297702 3658-290		

DWG NO.	PUD 370
	A-361



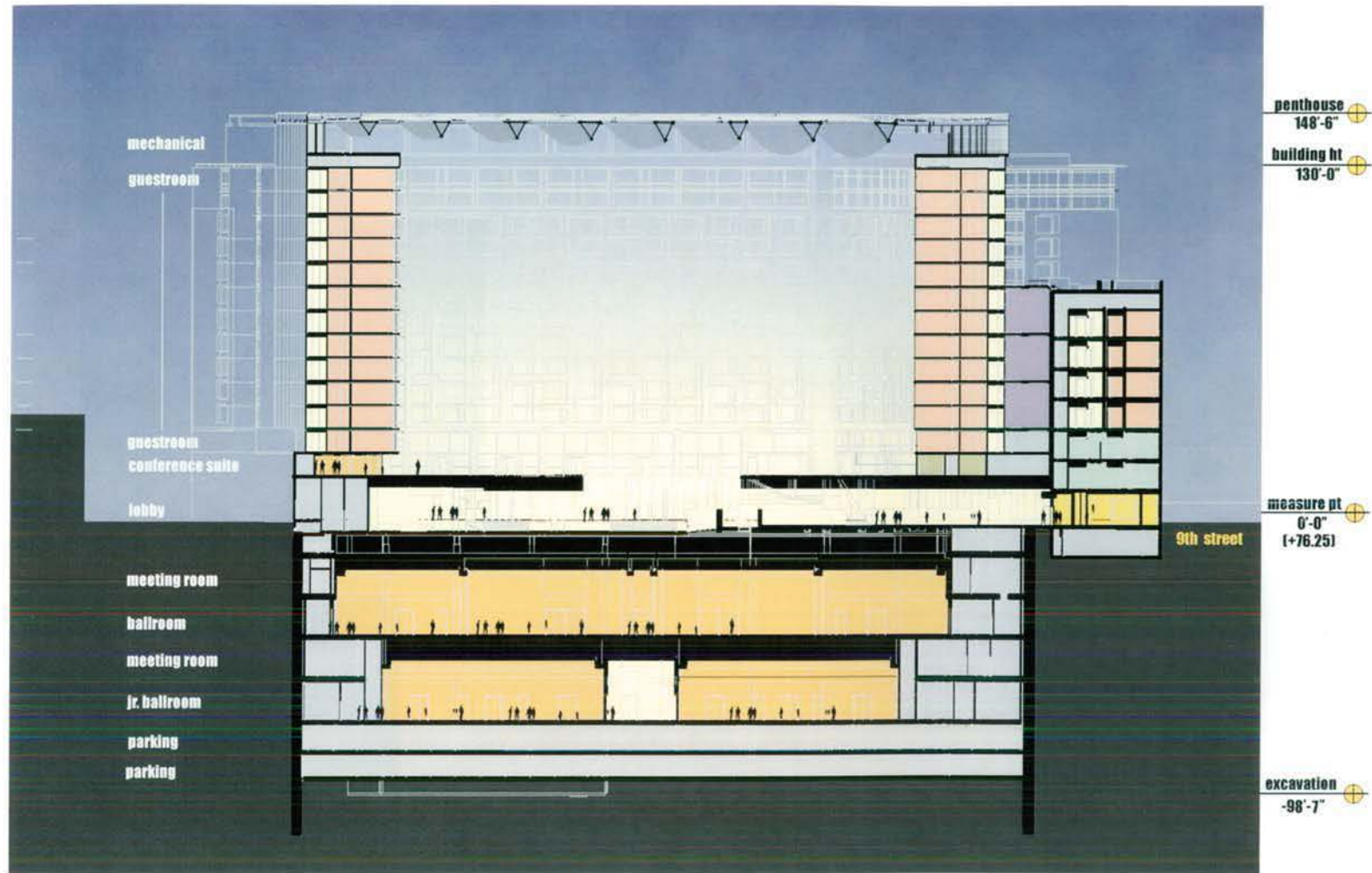
FINAL CONSOLIDATED PUD SUBMISSION



THE COOPER CARRY - TVS COLLABORATIVE 3025 PIEDMONT ROAD N.E. SUITE 200 ATLANTA, GEORGIA 30309-1945 404-237-2000 FAX: 404-237-0276	PROJECT WASHINGTON D.C. MARRIOTT MARQUIS	TITLE BUILDING SECTIONS - NS	SCALE 1" = 40'-0"	DATE 02.13.2009	REFERENCES	PROJECT NO. 097301 3059-000
---	---	---------------------------------	----------------------	--------------------	------------	-----------------------------------

DWG NO. PUD 370 A-401

© 2008 COOPER CARRY INC.



FINAL CONSOLIDATED PUD SUBMISSION



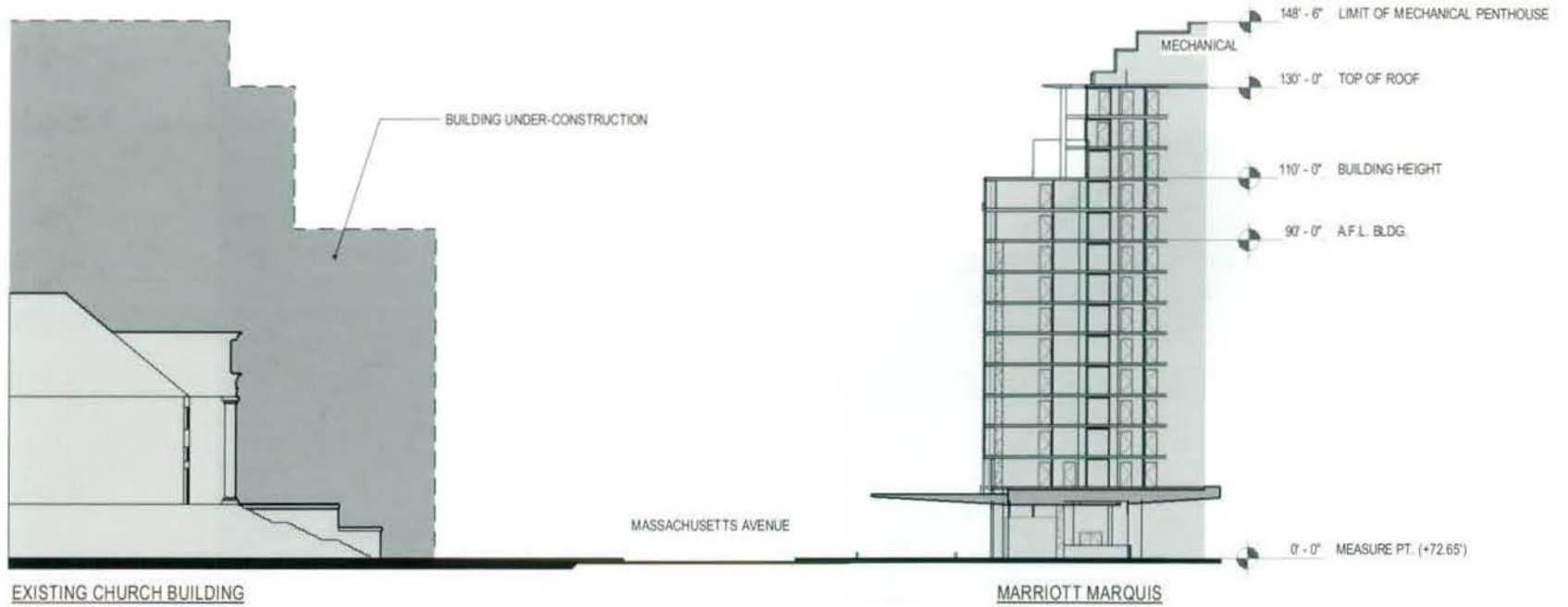
THE COOPER CARRY - TVS
COLLABORATIVE

3639 PIEDMONT ROAD N.E. SUITE 200
ATLANTA, GEORGIA 30305-1589
404-237-2000 FAX: 404-237-0278

© 2008 COOPER CARRY INC.

PROJECT	WASHINGTON D.C. MARRIOTT MARQUIS		
TITLE	BUILDING SECTION - EW		
SCALE	DATE	REFERENCES	PROJECT NO.
1" = 40'-0"	02.13.2009		207202 3058-000

DWG NO.	PUD 370
	A-402



FINAL CONSOLIDATED PUD SUBMISSION



THE COOPER CARRY - TVS
COLLABORATIVE

3620 PIEDMONT ROAD N.E. SUITE 200
ATLANTA, GEORGIA 30309-1909

404-237-2000 FAX: 404-237-0274

© 2008 COOPER CARRY INC

PROJECT			
WASHINGTON D.C. MARRIOTT MARQUIS			
TITLE			
MASS AVE SECTION			
SCALE	DATE	REFERENCES	PROJECT NO
1/32" = 1'-0"	02.13.2009		207202 309A-200

DWG NO:

PUD 370

A-403

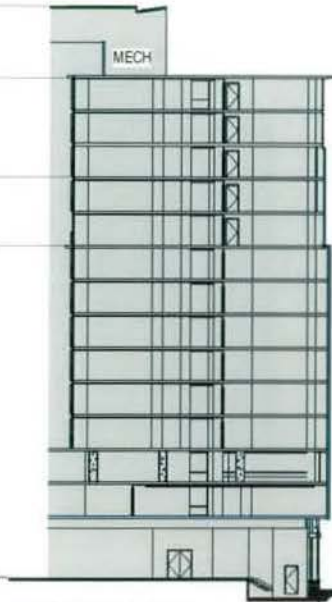
LIMIT OF MECHANICAL PENTHOUSE 148' - 0"

TOP OF ROOF 130' - 0"

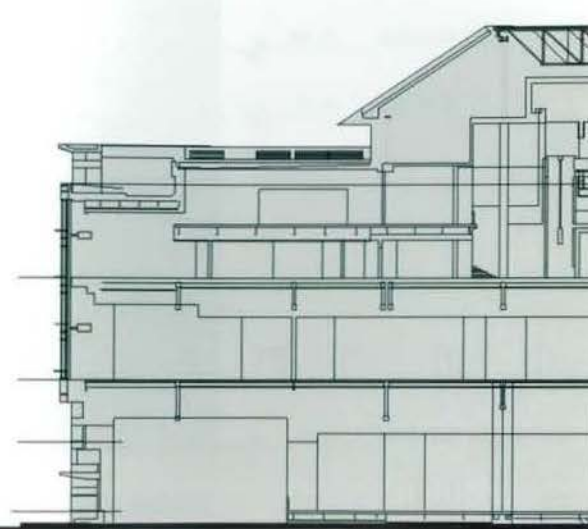
BUILDING HEIGHT 110' - 0"

A.F.L. BLDG. 90' - 0"

MEASURE PT. (+72.65') 0' - 0"



MARRIOTT MARQUIS



CONVENTION CENTER

+130' - 0" TOP OF ROOF

+90' - 0"

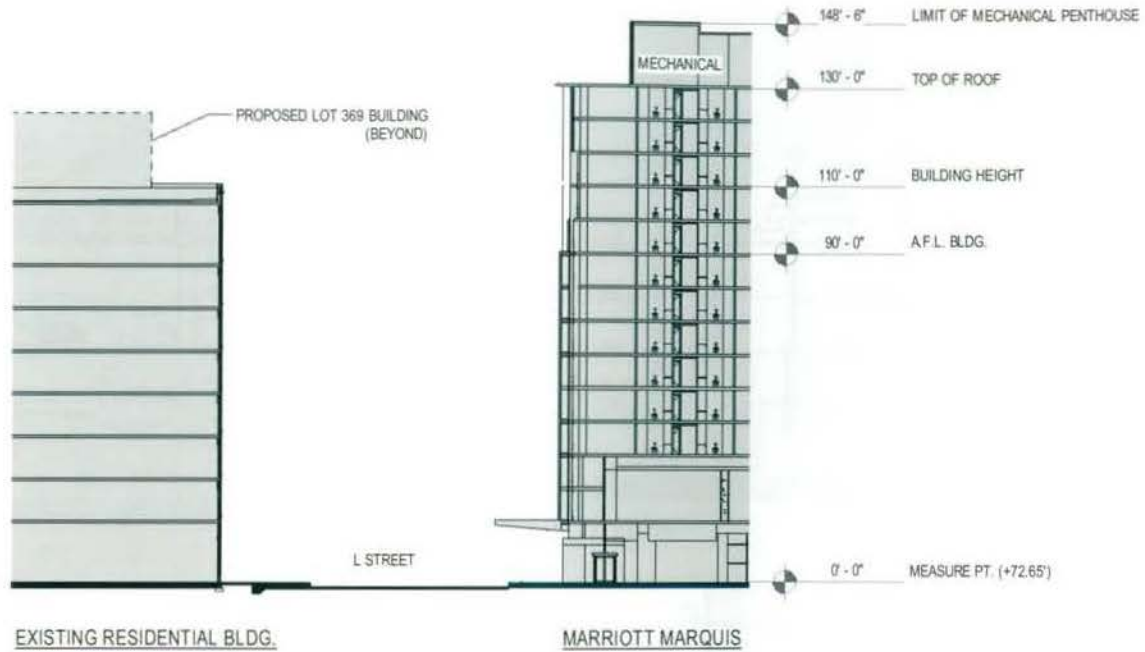


FINAL CONSOLIDATED PUD SUBMISSION



THE COOPER CARRY - TVS COLLABORATIVE 3020 WISDOMT ROAD N.E. SUITE 200 ATLANTA, GEORGIA 30305-1899 404-237-2000 FAX: 404-237-0278		PROJECT WASHINGTON D.C. MARRIOTT MARQUIS	
TITLE 9TH STREET SECTION			
SCALE	DATE	REFERENCES	PROJECT NO.
1/32"=1'-0"	02.13.2009		207203 3034-000

DWG NO.
PUD 370
A-404



FINAL CONSOLIDATED PUD SUBMISSION

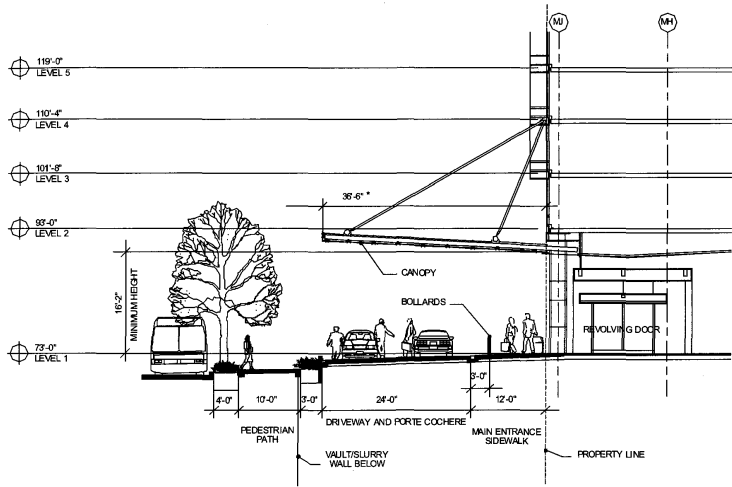


THE COOPER CARRY - TVS
COLLABORATIVE
3823 PIEDMONT ROAD N.E. SUITE 200
ATLANTA, GEORGIA 30305-1815
404-237-2000 FAX: 404-237-0278

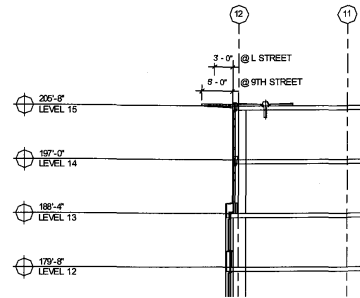
© 2008 COOPER CARRY INC.

PROJECT WASHINGTON D.C. MARRIOTT MARQUIS			
TITLE L STREET SECTION			
SCALE 1/32"=1'-0"	DATE 02.13.2009	REFERENCES	PROJECT NO. 107202 3056-000

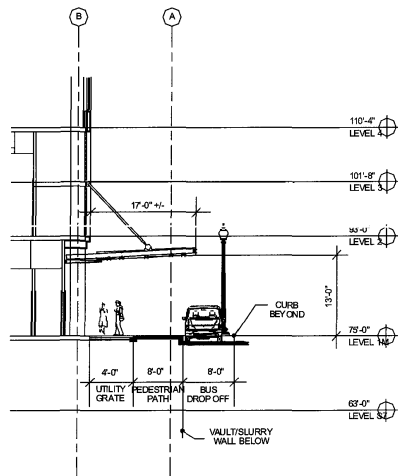
DWG NO.
PUD 370
A-405



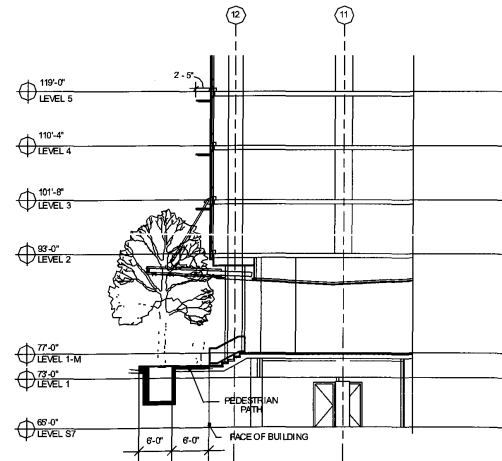
*PER AGREEMENT WITH PUBLIC SPACE COMMITTEE
MASSACHUSETTS AVENUE



9TH AND L STREET - UPPER SECTION (TYPICAL)



L STREET

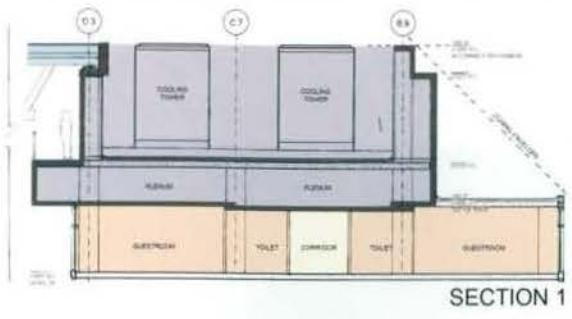
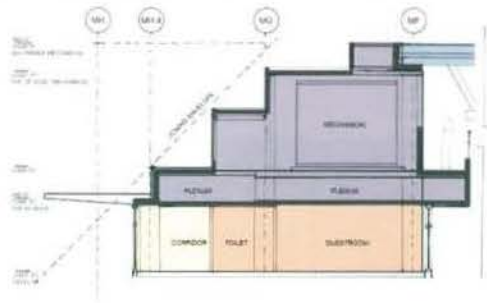


9TH STREET

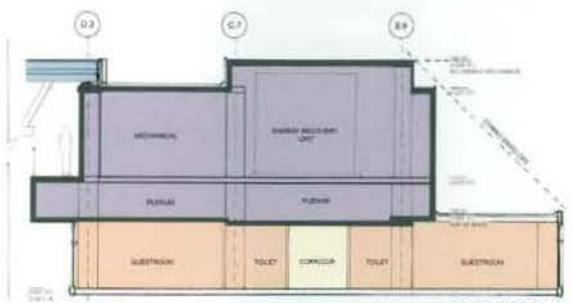
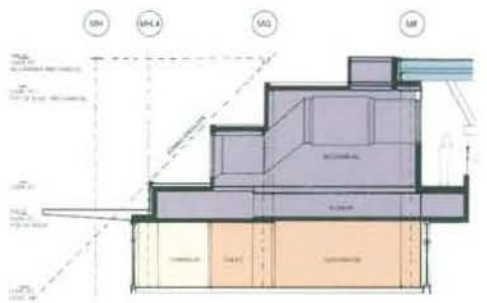
FINAL CONSOLIDATED PUD SUBMISSION



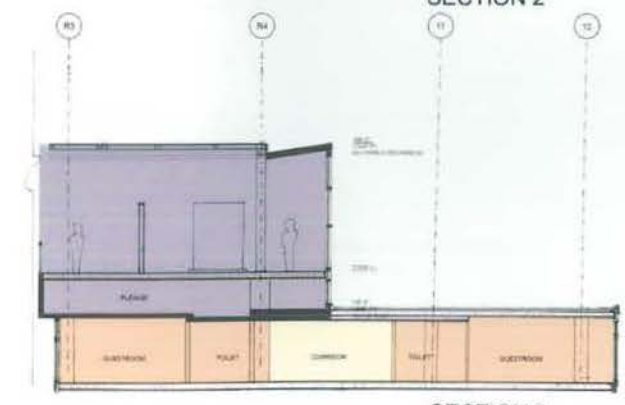
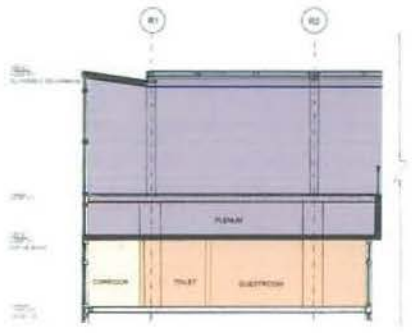
THE COOPER CARRY - TVS COLLABORATIVE 3520 PIEDMONT ROAD N.E. SUITE 200 ATLANTA, GEORGIA 30305-1595 404-237-2000 FAX: 404-237-0276		PROJECT WASHINGTON D.C. MARRIOTT MARQUIS	
TITLE CANOPY SECTIONS		DWG NO. PUD 370 A-406	
SCALE	DATE	REFERENCES	PROJECT NO.
	02.13.2009		207202 3058-000



SECTION 1



SECTION 2



SECTION 3

FINAL CONSOLIDATED PUD SUBMISSION



THE COOPER CARRY - TVS COLLABORATIVE
 1620 PIEDMONT ROAD N.E. SUITE 200
 ATLANTA, GEORGIA 30305-1999
 404-237-2000 FAX: 404-237-0216

PROJECT				WASHINGTON D.C. MARRIOTT MARQUIS	
TITLE				MECHANICAL PENTHOUSE SECTIONS	
SCALE	DATE	REFERENCES	PROJECT NO.		
	02.13.2009		207292		
			3058-001		

DWG NO
PUD 370
A-407

© 2009 COOPER CARRY INC.



ENTRY

FINAL CONSOLIDATED PUD SUBMISSION



THE COOPER CARRY - TVS
COLLABORATIVE
3020 PHIDMONT ROAD N.E. SUITE 200
ATLANTA, GEORGIA 30305-1395
404-237-2000 FAX: 404-237-0276

© 2008 COOPER CARRY INC

PROJECT		WASHINGTON D.C. MARRIOTT MARQUIS	
TITLE			
STREET LEVEL ELEVATION VIGNETTES			
SCALE	DATE	REFERENCES	PROJECT NO.
NTS	02.13.2009		207502 3058-000

DWG NO.
PUD 370
A-501



MASS . AVENUE

FINAL CONSOLIDATED PUD SUBMISSION



THE COOPER CARRY - TVS
COLLABORATIVE
3830 PIEDMONT ROAD N.E. SUITE 200
ATLANTA, GEORGIA 30339-1004
404-237-0000 FAX 404-237-0274

© 2008 COOPER CARRY INC.

PROJECT				WASHINGTON D.C. MARRIOTT MARQUIS	
TITLE					
STREET LEVEL ELEVATION VIGNETTES					
SCALE	DATE	REFERENCES	PROJECT NO.		
NTS	02.13.2009		107201		
			3058-000		

DWG NO.
PUD 370
A-502



MASS . AVENUE

FINAL CONSOLIDATED PUD SUBMISSION



THE COOPER CARRY - tvs
COLLABORATIVE
3570 PIEDMONT ROAD N.E. SUITE 200
ATLANTA, GEORGIA 30326-1595
404-237-2000 FAX 404-237-0276

© 2004 COOPER CARRY INC.

PROJECT				WASHINGTON D.C. MARRIOTT MARQUIS	
TITLE				STREET LEVEL ELEVATION VIGNETTES	
SCALE	DATE	REFERENCES	PROJECT NO.		
NTS	02.13.2009		407202 3558-002		

DWG NO.
PUD 370
A-503



NOTE: SUPERSEDED DRAWING INCLUDED FOR RECORD ONLY

FINAL CONSOLIDATED PUD SUBMISSION



THE COOPER CARRY - TVS
COLLABORATIVE
3520 PIEDMONT ROAD N.E. SUITE 200
ATLANTA, GEORGIA 30355-1595
404-237-2000 FAX: 404-237-0576

© 2008 COOPER CARRY INC.

PROJECT			
WASHINGTON D.C. MARRIOTT MARQUIS			
TITLE			
PERSPECTIVE VIEW			
SCALE	DATE	REFERENCES	PROJECT NO.
	02.13.2009		207703 3058-000

DWG NO
PUD 370
A-504



FINAL CONSOLIDATED PUD SUBMISSION



THE COOPER CARRY - TVS
COLLABORATIVE

3120 PIEDMONT ROAD N.E. SUITE 300
ATLANTA, GEORGIA 30338-1389
404-237-2000 FAX: 404-237-0774

© 2008 COOPER CARRY INC.

PROJECT			
WASHINGTON D.C. MARRIOTT MARQUIS			
TITLE			
MASS AVE STREET VIGNETTE 1			
SCALE	DATE	REFERENCES	PROJECT NO.
	02.13.2009		207203 3038-505

DWG NO.
PUD 370
A-505



FINAL CONSOLIDATED PUD SUBMISSION



THE COOPER CARRY - TVS
COLLABORATIVE
3020 FIDELITY ROAD N.W. SUITE 200
ATLANTA, GEORGIA 30309-1599
404-237-2000 FAX: 404-237-0278

© 2008 COOPER CARRY INC.

PROJECT	WASHINGTON D.C. MARRIOTT MARQUIS		
TITLE	MASS AVE STREET VIGNETTE 2		
SCALE	DATE	REFERENCES	PROJECT NO.
NTS	02.13.2009		257792 3056-001

DWG NO.
PUD 370
A-506



FINAL CONSOLIDATED PUD SUBMISSION



THE COOPER CARRY - TVS COLLABORATIVE 3620 PIEDMONT ROAD, N.E. SUITE 200 ATLANTA, GEORGIA 30305-1955 404-237-2000 FAX: 404-237-0276		PROJECT WASHINGTON D.C. MARRIOTT MARQUIS		DWG NO. PUD 370 A-507
© 2008 COOPER CARRY INC.		TITLE MASS AVE STREET VIGNETTE 3		
		SCALE Author	DATE 02.13.2009	REFERENCES PROJECT NO. 297292 3058-000



FINAL CONSOLIDATED PUD SUBMISSION



THE COOPER CARRY - TVS
COLLABORATIVE

3020 PHIDWY ROAD N.E. SUITE 200
ATLANTA, GEORGIA 30305-1585
404-237-2050 FAX: 404-237-0274

© 2009 COOPER CARRY INC.

PROJECT				WASHINGTON D.C. MARRIOTT MARQUIS	
TITLE				MASS AVE STREET VIGNETTE 4	
SCALE	DATE	REFERENCES	PROJECT NO.		
Author	02.13.2009		307202 3058-000		

DWG. NO.
PUD 370
A-508



FINAL CONSOLIDATED PUD SUBMISSION



THE COOPER CARRY - TVS
COLLABORATIVE

3825 PIEDMONT ROAD N.E. SUITE 200
ATLANTA, GEORGIA 30305-1895
404-237-0000 FAX: 404-237-0276

© 2008 COOPER CARRY INC.

PROJECT				WASHINGTON D.C. MARRIOTT MARQUIS	
TITLE				9TH STREET STREET VIGNETTE 1	
SCALE	DATE	REFERENCES	PROJECT NO.		
Author	02.13.2009		107202 2008.050		

DWG NO.
PUD 370
A-509



FINAL CONSOLIDATED PUD SUBMISSION



THE COOPER CARRY - TVS
COLLABORATIVE

1820 PIEDMONT ROAD N.E. SUITE 200
ATLANTA, GEORGIA 30325-1595
404-231-2000 FAX: 404-231-0278

© 2008 COOPER CARRY INC.

PROJECT		WASHINGTON D.C. MARRIOTT MARQUIS	
TITLE			
9TH STREET STREET VIGNETTE 2			
SCALE	DATE	REFERENCES	PROJECT NO.
Author	02.13.2009		207202 3056-905

DWG NO.
PUD 370
A-510



FINAL CONSOLIDATED PUD SUBMISSION



THE COOPER CARRY - TVS
COLLABORATIVE
3825 PIEDMONT ROAD N.E. SUITE 300
ATLANTA, GEORGIA 30305-1885
404-237-0000 FAX: 404-237-0278

© 2018 COOPER CARRY INC.

PROJECT		WASHINGTON D.C. MARRIOTT MARQUIS	
TITLE			
L STREET STREET VIGNETTE 1			
SCALE	DATE	REFERENCES	PROJECT NO.
Author	02.13.2009		207003 3000-000

DWG NO.
PUD 370
A-511



FINAL CONSOLIDATED PUD SUBMISSION



THE COOPER CARRY - THE COLLABORATIVE
 3620 PIEDMONT ROAD N.E. SUITE 200
 ATLANTA, GEORGIA 30305-1690
 404-231-2000 FAX: 404-231-0278

© 2009 COOPER CARRY INC.

PROJECT				WASHINGTON D.C. MARRIOTT MARQUIS	
TITLE					
L STREET STREET VIGNETTE 2					
SCALE	DATE	REFERENCES	PROJECT NO.		
Author	02.13.2009		207203	3058 000	

DWG NO.	PUD 370
	A-512



FINAL CONSOLIDATED PUD SUBMISSION



THE COOPER CARRY - TVS
COLLABORATIVE
1802 PIEDMONT ROAD, S.W. SUITE 230
ATLANTA, GEORGIA 30329-1599
404-237-2000 FAX: 404-237-0278

© 2009 COOPER CARRY INC.

PROJECT		WASHINGTON D.C. MARRIOTT MARQUIS	
TITLE			
CONVENTION CENTER UPPER LEVEL CONNECTOR RENDERING			
SCALE	DATE	REFERENCES	PROJECT NO.
Author	02.13.2009		307202 3058-000

DWG NO.
PUD 370
A-513



FINAL CONSOLIDATED PUD SUBMISSION



THE COOPER CARRY - TVS
COLLABORATIVE

9620 PIEDMONT ROAD N.E. SUITE 200
ATLANTA, GEORGIA 30326-1599
404-237-2000 FAX: 404-237-0275

© 2008 COOPER CARRY INC.

PROJECT			
WASHINGTON D.C. MARRIOTT MARQUIS			
TITLE			
MASS AND 9TH STREET LEVEL RENDERING - NIGHT			
SCALE	DATE	REFERENCES	PROJECT NO.
	02.13.2009		207202 3558-000

DWG NO
PUD 370
A-515A



FINAL CONSOLIDATED PUD SUBMISSION



THE COOPER CARRY - TVS
COLLABORATIVE
7855 RIDGEMONT ROAD N.E. SUITE 200
ATLANTA, GEORGIA 30305-1595
404.237.2000 FAX 404.237-1079

© 2014 COOPER CARRY INC.

PROJECT				WASHINGTON D.C. MARRIOTT MARQUIS							
TITLE								MASS AND 9TH STREET LEVEL RENDERING - DAY			
SCALE		DATE		REFERENCES		PROJECT NO.					
		02.13.2009				207202					
						955-008					

DWG NO.
PUD 370
A-515B



FINAL CONSOLIDATED PUD SUBMISSION



THE COOPER CARRY - TVS COLLABORATIVE 3620 PIEDMONT ROAD, N.E. SUITE 200 ATLANTA, GEORGIA 30305-1550 404-337-2000 FAX: 404-337-0276		PROJECT WASHINGTON D.C. MARRIOTT MARQUIS	
		TITLE 9TH AND L STREET LEVEL RENDERING	
SCALE	DATE	REFERENCES	PROJECT NO.
	02.13.2009		207202 3858-000

DWG NO	PUD 370
	A-516



FINAL CONSOLIDATED PUD SUBMISSION



THE COOPER CARRY - TVS COLLABORATIVE 3820 PHIDMONT ROAD N.E. SUITE 200 ATLANTA, GEORGIA 30305-1593 404-237-2000 FAX: 404-237-0276		PROJECT WASHINGTON D.C. MARRIOTT MARQUIS	
		TITLE L AND 10TH STREET LEVEL RENDERING	
SCALE	DATE	REFERENCES	PROJECT NO.
	02.13.2009		207202 3056-001

DWG. NO.
PUD 370
A-517

© 2009 COOPER CARRY INC.



FINAL CONSOLIDATED PUD SUBMISSION

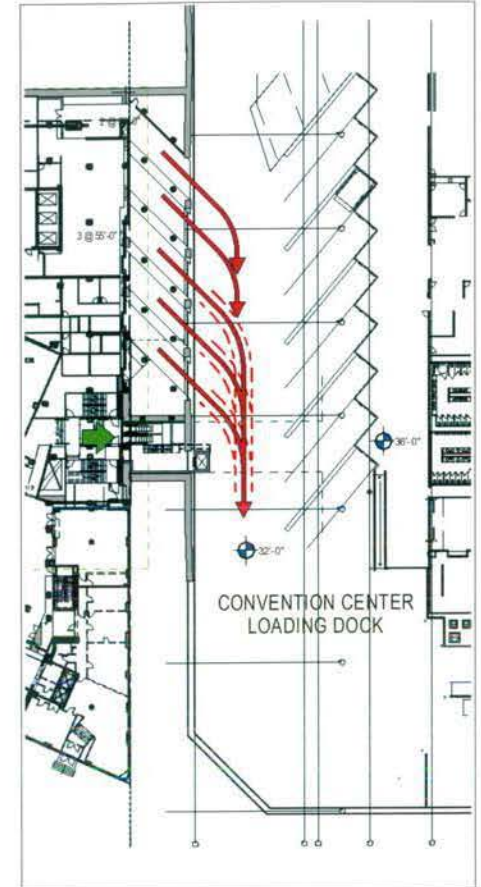
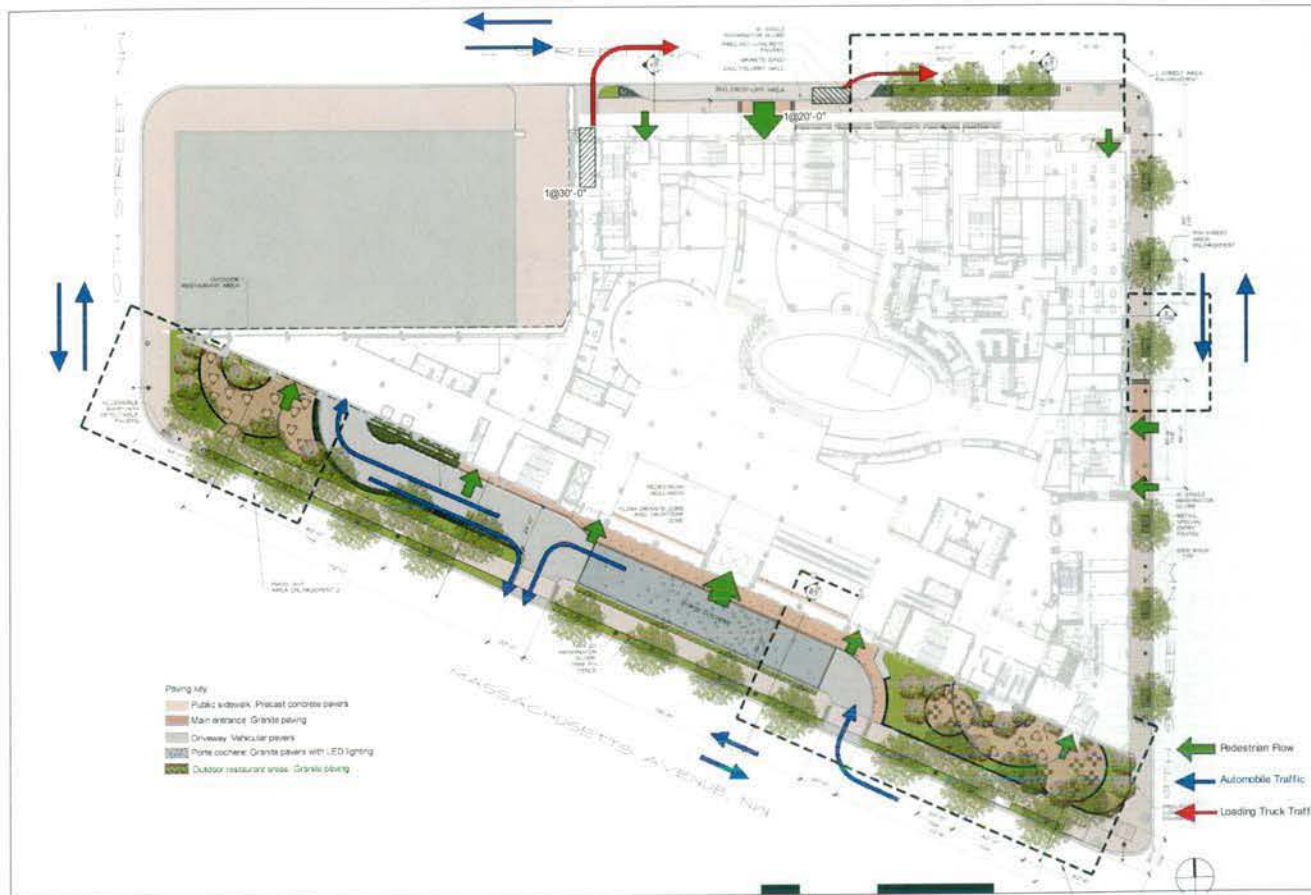


THE COOPER CARRY - TVS
COLLABORATIVE
180 PHENOMENAL ROAD N.E. SUITE 310
ATLANTA, GEORGIA 30305-1393
404-237-2000 FAX: 404-237-0778

© 2009 COOPER CARRY INC.

PROJECT		WASHINGTON D.C. MARRIOTT MARQUIS	
TITLE			
MASS AND 9TH STREET AERIAL RENDERING			
SCALE	DATE	REFERENCES	PROJECT NO.
	02.13.2009		207902 30A-000

DWG NO.
PUD 370
A-518

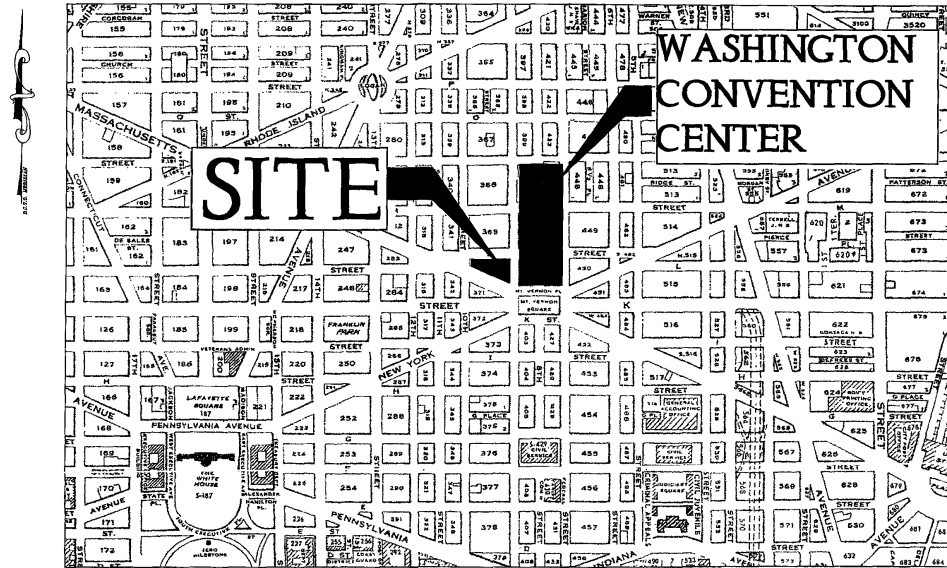


FINAL CONSOLIDATED PUD SUBMISSION



THE COOPER CARRY - TVS COLLABORATIVE 3029 PIEDMONT ROAD N.E. SUITE 210 ATLANTA, GEORGIA 30305-1593 404.237.2000 FAX: 404.237.0278	PROJECT: WASHINGTON D.C. MARRIOTT MARQUIS		DWG NO: PUD 370 A-601
	TITLE: CIRCULATION PLAN		
SCALE: NTS		DATE: 02.13.2009	REFERENCES:
© 2009 COOPER CARRY INC.		PROJECT NO: 207392 3556-000	


MARRIOTT MARQUIS
WASHINGTON CONVENTION CENTER
901 MASSACHUSETTS AVENUE



DRAWING TITLES

- C 1.0 COVER SHEET
- C 1.1 CONTEXT PLAN
- C 1.2 EXISTING CONDITIONS PLAN
- C 2.0 SITE PLAN
- C 2.1 SITE UTILITY PLAN
- C 2.2 EROSION & SEDIMENT CONTROL PLAN
- C 2.3 EROSION & SEDIMENT CONTROL DETAILS

FINAL CONSOLIDATED PUD SUBMISSION

HOTEL OPERATOR
 MARRIOTT INTERNATIONAL, INC.
 MARRIOTT DRIVE, DEPT 70/100.03
 BETHESDA, MD 20817
 TEL: 301-380-6864
 FAX: 301-380-1992
 ATTN: WILLIAM GROVER

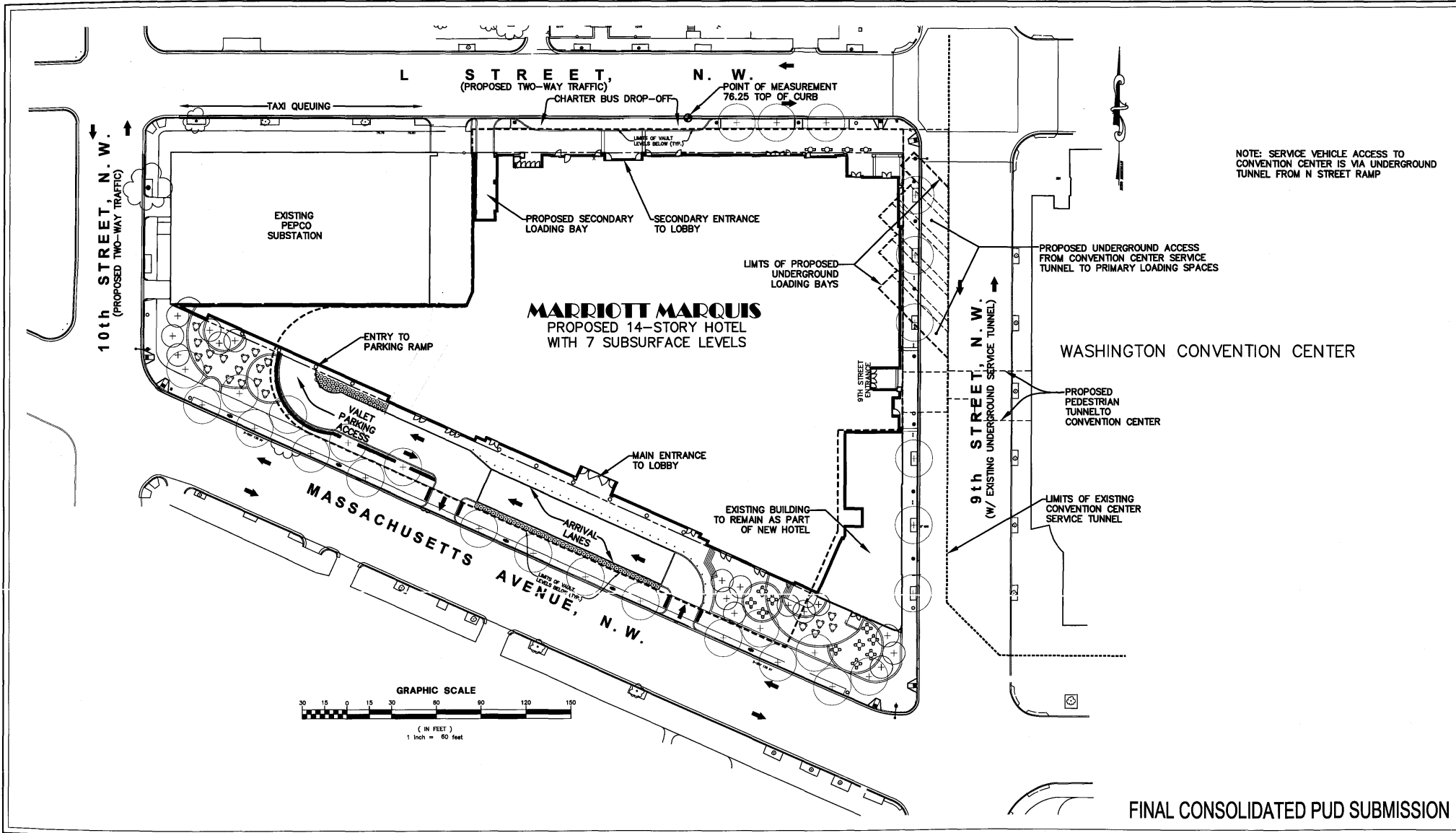
DEVELOPER
 QUADRANGLE DEVELOPMENT
 1001 G STREET, NW
 SUITE 700W
 WASHINGTON, DC 20001
 TEL: 202-393-1999
 FAX: 202-393-0548
 ATTN: ROBERT J. KNOPP

OWNER
 WASHINGTON CONVENTION CENTER
 801 MOUNT VERNON PLACE, NW
 WASHINGTON, DC 20001
 TEL: 202-249-3000
 ATTN: JOHN COLLINS


AMT, LLC
 PROFESSIONAL ENGINEERS & LAND SURVEYORS
 15 G STREET, N.E. SUITE 410
 WASHINGTON, D.C. 20002
 PHONE: (202) 262-4242 FAX: (202) 269-9061

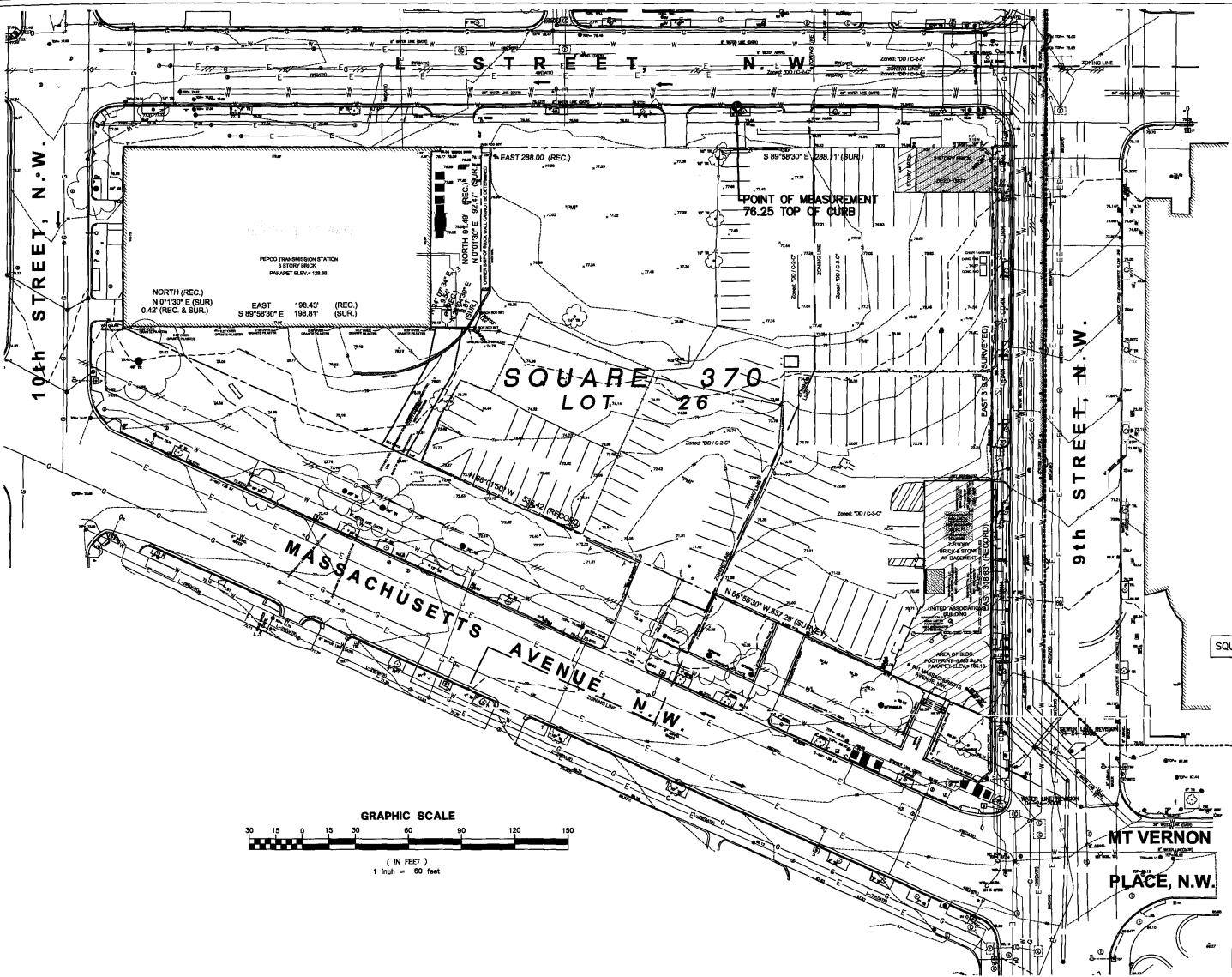
PROJECT WASHINGTON D.C. MARRIOTT MARQUIS			
TITLE COVER SHEET			
SCALE	DATE 02/13/09	REFERENCES	AMT PROJECT NO. DC08-029



DWG NO.
PUD 370
C-1.0



FINAL CONSOLIDATED PUD SUBMISSION

<p>HOTEL OPERATOR MARRIOTT INTERNATIONAL, INC. MARRIOTT DRIVE, DEPT 70/100.03 BETHESDA, MD 20817 TEL: 301-380-6964 FAX: 301-380-1992 ATTN: WILLIAM GROVER</p>	<p>DEVELOPER QUADRANGLE DEVELOPMENT 1001 G STREET, NW SUITE 700W WASHINGTON, DC 20001 TEL: 202-393-1999 FAX: 202-393-0548 ATTN: ROBERT J. KNOFF</p>	<p>OWNER WASHINGTON CONVENTION CENTER 801 MOUNT VERNON PLACE, NW WASHINGTON, DC 20001 TEL: 202-249-3000 ATTN: JOHN COLLINS</p>	<p>AMT, LLC PROFESSIONAL ENGINEERS & LAND SURVEYORS 30 G STREET, N.E. SUITE 400 WASHINGTON, D.C. 20002 PHONE: 202-381-8644 FAX: 202-381-8651</p>	<p>PROJECT: WASHINGTON D.C. MARRIOTT MARQUIS</p> <p>TITLE: CONTEXT PLAN</p> <p>SCALE: 1" = 60'</p> <p>DATE: 02/13/09</p> <p>REFERENCES:</p> <p>AMT PROJECT NO. DC08-029</p>	<p>DWG NO. PUD 370 C-1.1</p>
--	--	---	---	---	--------------------------------------



- LEGEND**
- TOP OF WALL
 - TRUNK C&W
 - UNCL. TRAF. LINE
 - TRAF. SIGNAL POLE
 - TRAF. SIGNAL BOX
 - SOH
 - PARKING METER
 - UTILITY MANHOLE
 - TELEPHONE MANHOLE
 - TELEPHONE MANHOLE
 - LIGHT POLE
 - LAMP POST
 - ELECTRIC MANHOLE
 - ELEC. UNCL. BOX
 - GROUND SPIT
 - SOIL. HOLE, SH
 - CLEAN OUT
 - WATER VALVE
 - WATER METER
 - WATER MANHOLE
 - FIRE MANHOLE
 - GAS VALVE
 - POST
 - BOLLARD
 - STEEL PLATES
-  BUILDINGS
 ADJACENT LOT BUILDINGS

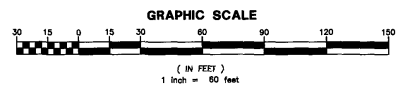
**Plumbers and Pipe Fitters Building
#901 Massachusetts Avenue, N.W.**

Floor Elevations:
Elevations at North inside wall of building. Floors 2, 3, 4, 5, 6, and 7 are carpeted thus cannot verify if false flooring exists.

Elevations on DCDPW vertical Datum.

Basement =	84.10
First Floor =	78.23 Floor type "tile"
Second Floor =	88.29
Third Floor =	92.23
Fourth Floor =	110.47
Fifth Floor =	121.58
Sixth Floor =	132.71
Seventh Floor =	143.74

SQUARE 370; LOT 26 (SUBDIVISION APPROVED JANUARY 2009; SO #06317)



FINAL CONSOLIDATED PUD SUBMISSION

HOTEL OPERATOR
MARRIOTT INTERNATIONAL, INC.
MARRIOTT DRIVE, DEPT 70/100.03
BETHESDA, MD 20817
TEL: 301-380-6964
FAX: 301-380-1992
ATTN: WILLIAM GROVER

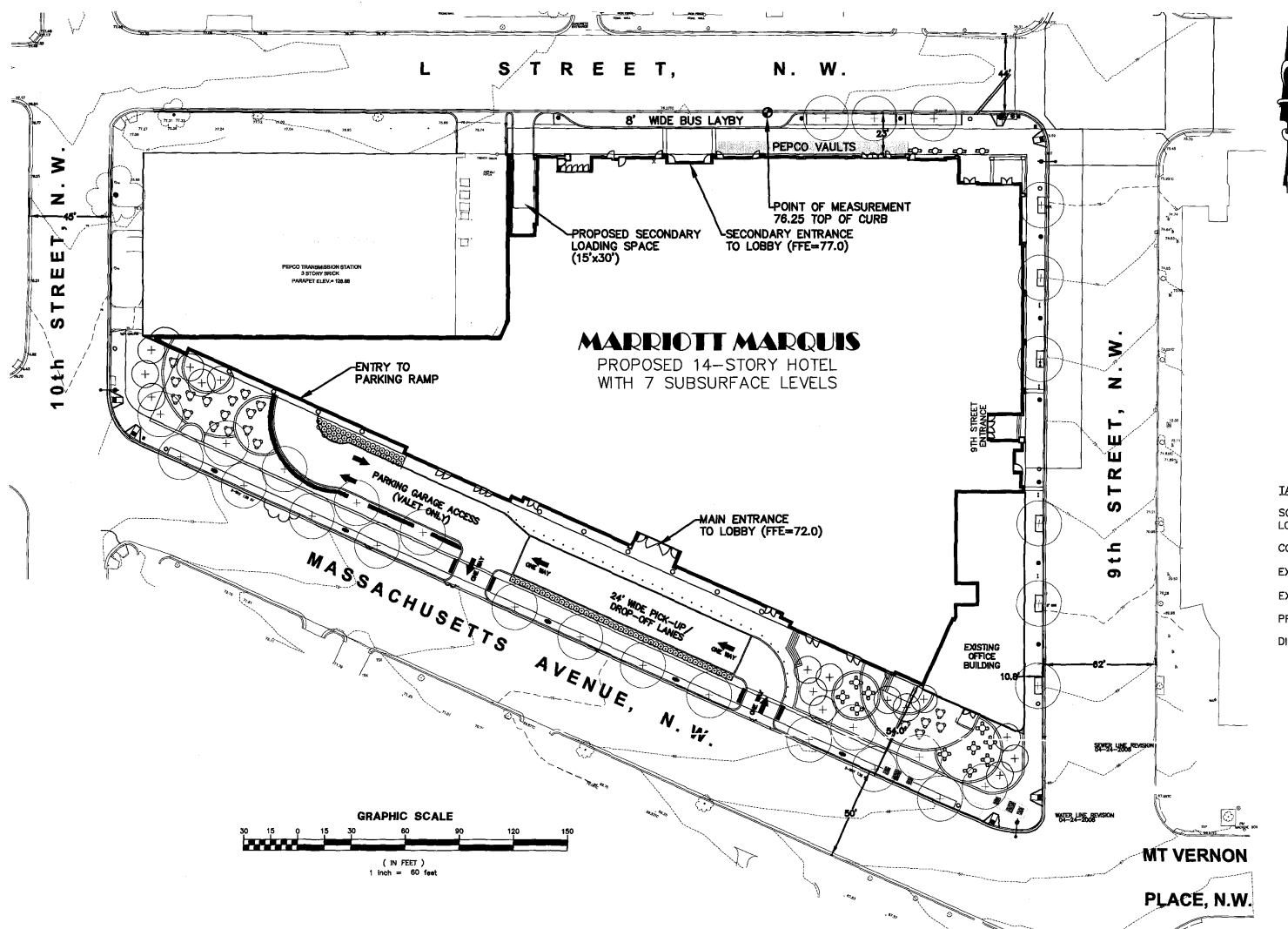
DEVELOPER
QUADRANGLE DEVELOPMENT
1001 G STREET, NW
SUITE 700W
WASHINGTON, DC 20001
TEL: 202-393-1999
FAX: 202-393-0548
ATTN: ROBERT J. KNOPF

OWNER
WASHINGTON CONVENTION CENTER
801 MOUNT VERNON PLACE, NW
WASHINGTON, DC 20001
TEL: 202-249-3000
ATTN: JOHN COLLINS

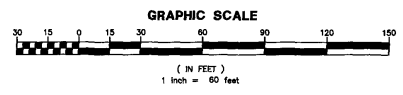
AMT, LLC
PROFESSIONAL ENGINEERS & LAND SURVEYORS
101 G STREET, N.W. SUITE 400
WASHINGTON, D.C. 20002
PHONE: (202) 789-4546 FAX: (202) 789-9091

PROJECT		WASHINGTON D.C. MARRIOTT MARQUIS	
TITLE		EXISTING CONDITIONS PLAN	
SCALE	DATE	REFERENCES	AMT PROJECT NO.
1" = 60'	02/13/09		DC08-029

DWG NO.
PUD 370
C-1.2



TABULATION OF DEVELOPMENT DATA:
 SQUARE 370
 LOT 26 (SUBDIVISION APPROVED JANUARY 2009; SO #06317)
 COMBINED LOT AREA: 82,887
 EXISTING ZONING: DD/C-3-C AND DD/C-2-C
 EXISTING USE: PARKING LOTS/OFFICE BUILDING
 PROPOSED USE: MARRIOTT MARQUIS HOTEL
 DISTURBED AREA: 133,970 SF



FINAL CONSOLIDATED PUD SUBMISSION

HOTEL OPERATOR
 MARRIOTT INTERNATIONAL, INC.
 MARRIOTT DRIVE, DEPT 70/100.03
 BETHESDA, MD 20817
 TEL: 301-380-6964
 FAX: 301-380-1992
 ATTN: WILLIAM GROVER

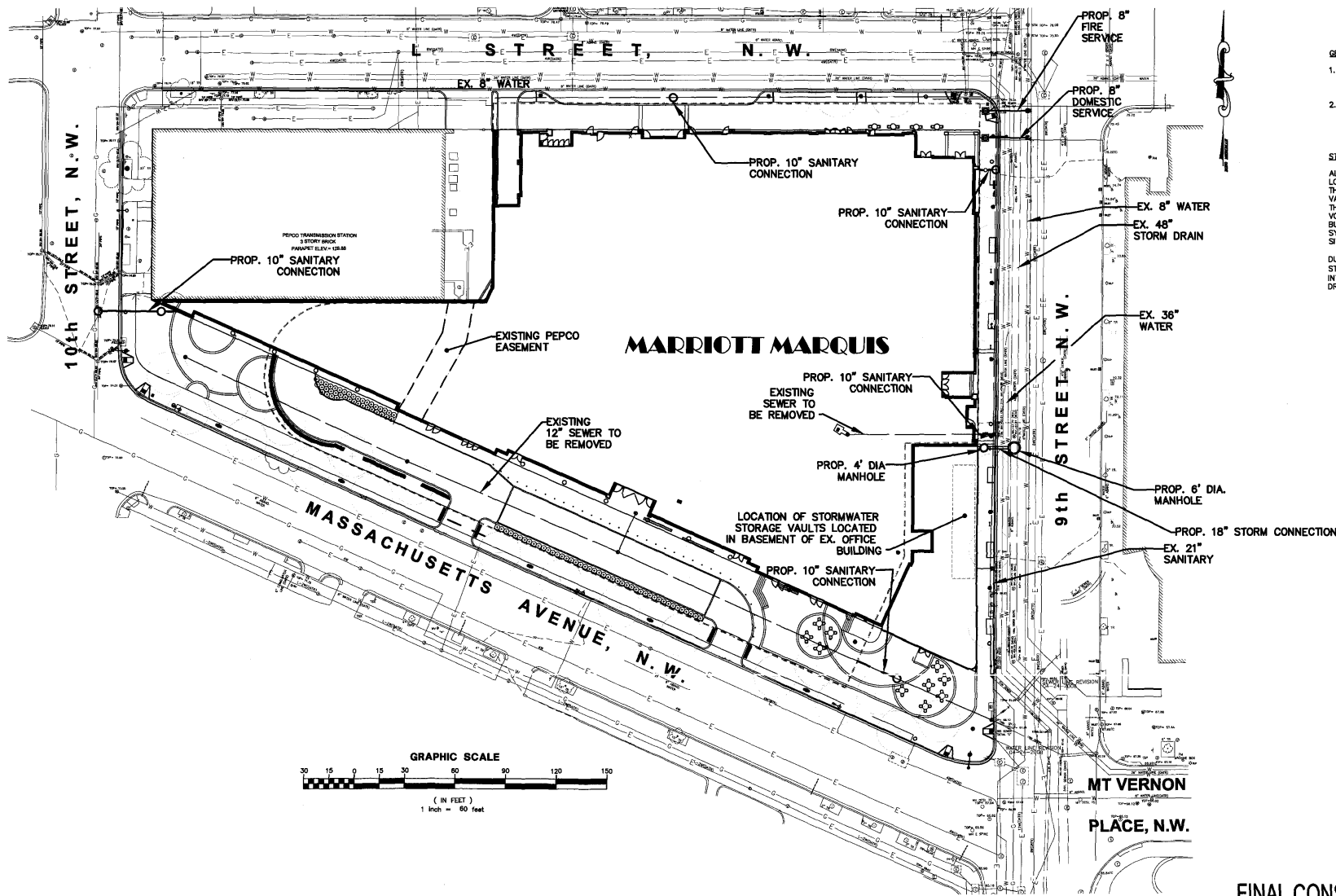
DEVELOPER
 QUADRANGLE DEVELOPMENT
 1001 G STREET, NW
 SUITE 700W
 WASHINGTON, DC 20001
 TEL: 202-393-1999
 FAX: 202-393-0548
 ATTN: ROBERT J. KNOPF

OWNER
 WASHINGTON CONVENTION CENTER
 801 MOUNT VERNON PLACE, NW
 WASHINGTON, DC 20001
 TEL: 202-249-3000
 ATTN: JOHN COLLINS



PROJECT WASHINGTON D.C. MARRIOTT MARQUIS			
TITLE SITE PLAN			
SCALE 1" = 60'	DATE 02/13/09	REFERENCES	AMT PROJECT NO. DC08-029

DWG NO.
 PUD 370
 C-2.0



- GENERAL UTILITY NOTES:**
1. ALL WATER, SEWER AND STORM DRAIN CONNECTIONS WILL BE CONSTRUCTED IN ACCORDANCE WITH DC WASA STANDARDS AND SPECIFICATIONS.
 2. ALL CONSTRUCTION WITHIN PUBLIC SPACE/RIGHTS OF WAY SHALL BE IN ACCORDANCE WITH THE DISTRICT OF COLUMBIA DEPARTMENT OF TRANSPORTATION'S STANDARD SPECIFICATIONS FOR HIGHWAYS AND STRUCTURES, LATEST EDITION.

STORMWATER MANAGEMENT NARRATIVE:

ALL ROOF DRAINAGE AND DRAINAGE FROM THE SECONDARY LOADING DOCK WILL BE COLLECTED AND PIPED INTERNALLY THROUGH THE BUILDING TO THE PROPOSED STORMWATER STORAGE VAULT. THE STORAGE CAPACITY OF THE VAULTS WILL EXCEED THE REQUIRED QUALITY AND QUANTITY STORMWATER MANAGEMENT VOLUMES. THE WATER WILL THEN BE PUMPED TO FEED THE BUILDING COOLING TOWER SYSTEM. THE DESIGN INTENT OF THIS SYSTEM IS TO ELIMINATE ALL STORM WATER DISCHARGE FROM THE SITE AND RE-USE THIS WATER ON-SITE.

DURING LARGE STORM EVENTS (STORMS EXCEEDING THE 15-YEAR STORM) AN OVERFLOW RELIEF WILL BE PROVIDED TO DISCHARGE INTO AN EXISTING 48" SEWER THROUGH A NEW 18" PVC STORM DRAIN CONNECTION.

FINAL CONSOLIDATED PUD SUBMISSION

HOTEL OPERATOR

MARRIOTT INTERNATIONAL, INC.
 MARRIOTT DRIVE, DEPT 70/100.03
 BETHESDA, MD 20817
 TEL: 301-380-6964
 FAX: 301-380-1992
 ATTN: WILLIAM GROVER

DEVELOPER

QUADRANGLE DEVELOPMENT
 1001 G STREET, NW
 SUITE 700W
 WASHINGTON, DC 20001
 TEL: 202-393-1999
 FAX: 202-393-0548
 ATTN: ROBERT J. KNOPF

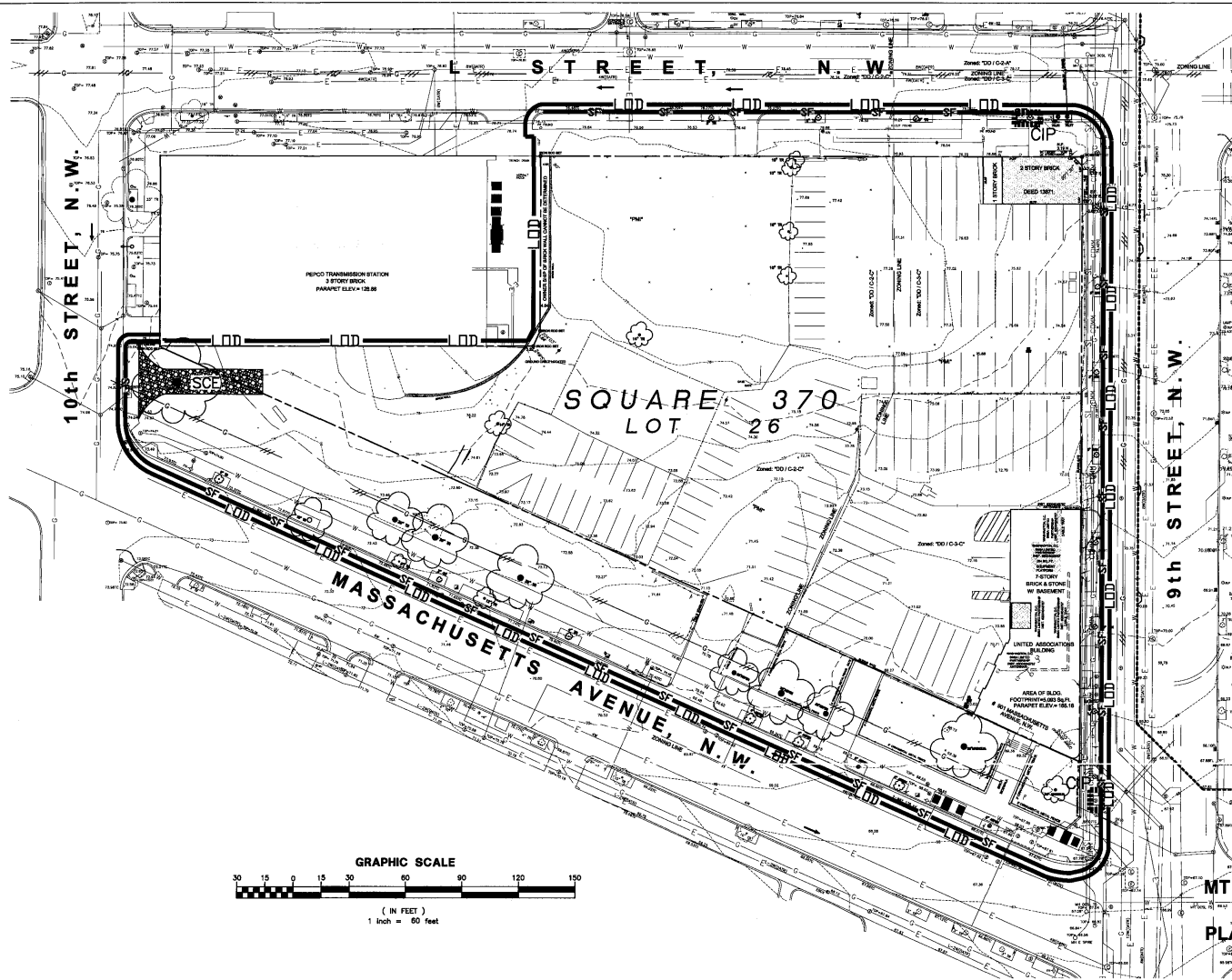
OWNER

WASHINGTON CONVENTION CENTER
 801 MOUNT VERNON PLACE, NW
 WASHINGTON, DC 20001
 TEL: 202-249-3000
 ATTN: JOHN COLLINS



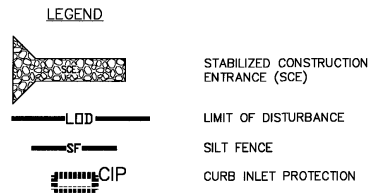
PROJECT		WASHINGTON D.C. MARRIOTT MARQUIS	
TITLE		SITE UTILITY AND STORM DRAIN/SWM PLAN	
SCALE	DATE	REFERENCES	AMT PROJECT NO.
1" = 60'	02/13/09		DC08-029

DWG NO.	PUD 370
	C-2.1



- EROSION CONTROL SEQUENCE OF CONSTRUCTION**
1. ALL EROSION AND SEDIMENT CONTROL MEASURES SHALL BE INSTALLED PRIOR TO OR AS THE FIRST STEP IN GRADING OR DEMOLITION. PROVIDE TEMPORARY STONE CONSTRUCTION ENTRANCES AS SHOWN.
 - PROVIDE CLEAN WATER SOURCE AND HOSE TO CLEAN ALL EQUIPMENT LEAVING SITE.
 - INSTALL PERIMETER EROSION AND SEDIMENT CONTROL MEASURES (CHAIN LINK CONSTRUCTION FENCE, SILT FENCE) AS SHOWN.
 - INSTALL INLET PROTECTION AT EXISTING STORM DRAIN INLETS AS SHOWN ON THIS PLAN.
 2. CONDUCT SELECT DEMOLITION ACTIVITIES ACCORDING TO THE APPLICABLE PLANS. NO DISTURBED ARE WILL BE DEMOLISHED FOR MORE THAN 7 CALENDAR DAYS.
 3. INSTALL THE NECESSARY TEMPORARY OR PERMANENT VEGETATIVE STABILIZATION MEASURES TO ACHIEVE ADEQUATE EROSION AND SEDIMENT CONTROL.
 5. INSTALL SUMP PIT(S)/PORTABLE SEDIMENT TANK(S) AS NECESSARY AND AS DIRECTED BY THE EROSION AND SEDIMENT CONTROL INSPECTOR.
 6. AS CONTRIBUTORY DRAINAGE AREAS ARE STABILIZED AND WITH THE PERMISSION OF THE EROSION AND SEDIMENT CONTROL INSPECTOR, REMOVE INDIVIDUAL EROSION AND SEDIMENT CONTROL PRACTICES.
 8. UPON COMPLETION OF LAND DISTURBING AND CONSTRUCTION ACTIVITIES, FLUSH CLEAN STORM DRAIN SYSTEMS OF ALL CONSTRUCTION DEBRIS.
 9. WITH THE APPROVAL OF THE EROSION AND SEDIMENT CONTROL INSPECTOR REMOVE ALL EROSION AND SEDIMENT CONTROL PRACTICES AND PROVIDE PERMANENT STABILIZATION ACCORDING TO APPROVED METHODS.

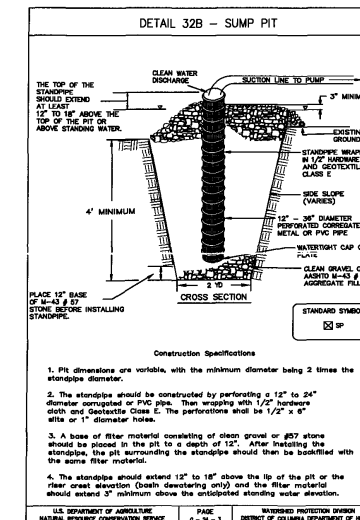
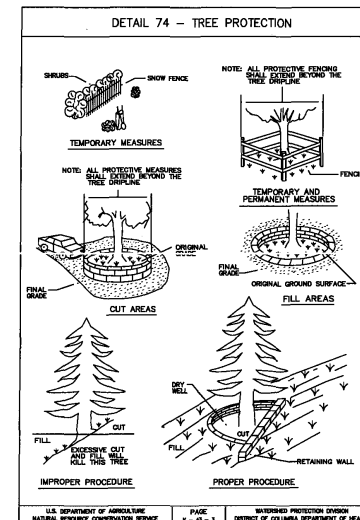
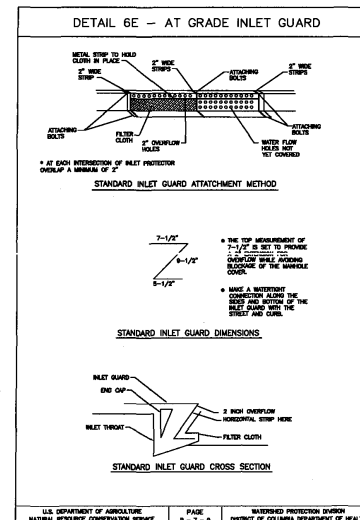
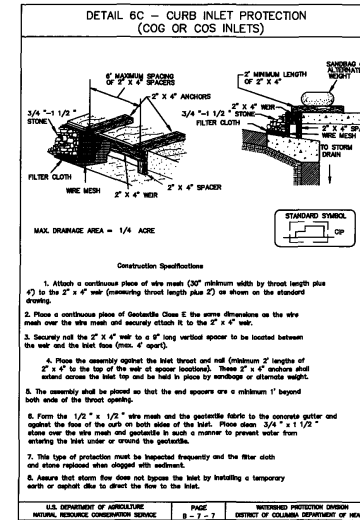
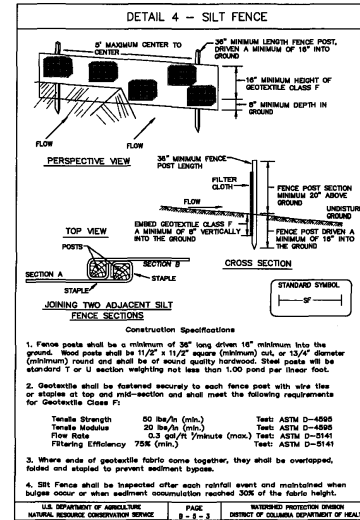
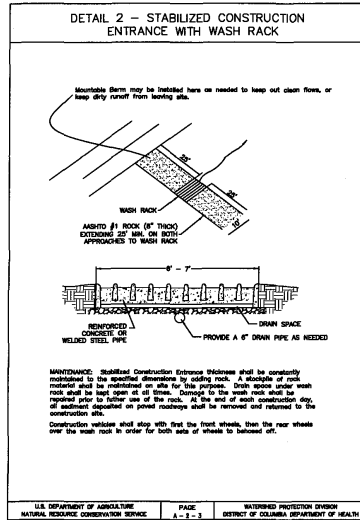
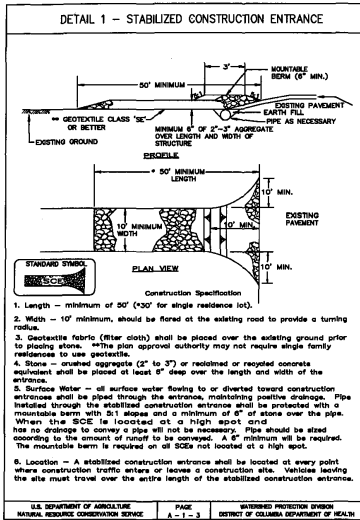
- EROSION & SEDIMENT CONTROL NOTES:**
1. CONTRACTOR NOT TO DISTURB ANY AREA OUTSIDE OF THE LIMITS OF DISTURBANCE (LOD).
 2. ALL CONSTRUCTION TO BE INSPECTED DAILY BY THE CONTRACTOR, AND ANY DAMAGED SILTATION OR EROSION CONTROL DEVICES OR MEASURES WILL BE REPAIRED AT THE CLOSE OF THE DAY. ALL SILT FENCE (SF) TO BE MAINTAINED IN WORKING CONDITION.
 3. STABILIZED CONSTRUCTION ENTRANCES TO BE PERIODICALLY SUPPLEMENTED WITH ADDITIONAL STONE AS NEEDED.
 4. CONTROLS CAN BE REMOVED AFTER THEIR CONTRIBUTING AREAS HAVE BEEN PERMANENTLY STABILIZED, AND APPROVAL OF INSPECTOR IS OBTAINED.
 5. ALL CONSTRUCTION AND RESTORATION OF PAVEMENT SURFACES, IN PUBLIC SPACE, SHALL BE IN ACCORDANCE WITH DDOT STANDARDS AND SPECIFICATIONS.



SITE TABULATION
LIMITS OF DISTURBANCE = 133,970 SF

FINAL CONSOLIDATED PUD SUBMISSION

<p>HOTEL OPERATOR MARRIOTT INTERNATIONAL, INC. MARRIOTT DRIVE, DEPT 70/100.03 BETHESDA, MD 20817 TEL: 301-380-6964 FAX: 301-380-1992 ATTN: WILLIAM GROVER</p>	<p>DEVELOPER QUADRANGLE DEVELOPMENT 1001 G STREET, NW SUITE 700W WASHINGTON, DC 20001 TEL: 202-393-1999 FAX: 202-393-0548 ATTN: ROBERT J. KNOPF</p>	<p>OWNER WASHINGTON CONVENTION CENTER 801 MOUNT VERNON PLACE, NW WASHINGTON, DC 20001 TEL: 202-249-3000 ATTN: JOHN COLLINS</p>	<p>AMT, LLC PROFESSIONAL ENGINEERS & LAND SURVEYORS 10 G STREET, N.E. SUITE 420 WASHINGTON, D.C. 20002 PHONE: (202) 288-4540 FAX: (202) 288-6051</p>	<p>PROJECT WASHINGTON D.C. MARRIOTT MARQUIS TITLE EROSION & SEDIMENT CONTROL PLAN SCALE 1" = 60' DATE 02/13/09 REFERENCES AMT PROJECT NO. DC08-029</p>	<p>DWG NO. PUD 370 C-2.2</p>
--	--	---	---	--	---



STANDARDS AND SPECIFICATIONS FOR DUST CONTROL

- THE CONTRACTOR SHALL CONDUCT OPERATIONS AND MAINTAIN THE PROJECT SITE SO AS TO MINIMIZE THE CREATION AND DISPERSION OF DUST. DUST CONTROL SHALL BE USED THROUGHOUT THE WORK AT THE SITE.
- THE CONTRACTOR MUST PROVIDE CLEAN WATER, FREE FROM SALT, OIL AND OTHER DELTERIOUS MATERIAL TO BE USED FOR ON-SITE DUST CONTROL.
- THE CONTRACTOR SHALL SUPPLY WATER SPRAYING EQUIPMENT CAPABLE OF ACCESSING ALL WORK AREAS.
- THE CONTRACTOR SHALL IMPLEMENT STRICT DUST CONTROL MEASURES DURING ACTIVE CONSTRUCTION PERIODS ON-SITE. THESE CONTROL MEASURES WILL GENERALLY CONSIST OF WATER APPLICATIONS THAT SHALL BE APPLIED A MINIMUM OF ONCE PER DAY DURING DRY WEATHER OR MORE OFTEN AS REQUIRED TO PREVENT DUST EMISSIONS.
- FOR WATER APPLICATION TO UNDISTURBED SOIL SURFACES, THE CONTRACTOR SHALL:
 - APPLY WATER WITH EQUIPMENT CONSISTING OF TANK, SPRAY BAR/PUMP WITH DISCHARGE PRESSURE GAUGE.
 - ARRANGE SPRAY BAR HEIGHT, NOZZLE SPACING AND PATTERN TO PROVIDE COMPLETE COVERAGE OF GROUND WITH WATER.
 - DISPERSE WATER THROUGH NOZZLES ON SPRAY BAR AT 30 PSI (13.8kPa), MINIMUM, KEEP AREAS DAMP WITHOUT CREATING MIST/SPRAYS SUCH AS FOGGING.
- FOR WATER APPLICATION TO SOIL SURFACES DURING DEMOLITION AND/OR EXCAVATION, THE CONTRACTOR SHALL:
 - APPLY WATER WITH EQUIPMENT CONSISTING OF A TANK, PUMP WITH DISCHARGE GAUGE, HOSES AND MIST NOZZLES.
 - LOCATE TANK AND SPRAYING EQUIPMENT SO THAT THE ENTIRE EXCAVATION AREA CAN BE MISTED WITHOUT INTERFERING WITH DEMOLITION AND/OR EXCAVATION EQUIPMENT OR OPERATIONS. KEEP AREAS DAMP WITHOUT CREATING MIST/SPRAYS SUCH AS FOGGING.
 - APPLY WATER SPRAY IN A MANNER TO PREVENT MOVEMENT OF SPRAY BEYOND THE SITE BOUNDARIES.

FINAL CONSOLIDATED PUD SUBMISSION

<p>HOTEL OPERATOR MARRIOTT INTERNATIONAL, INC. MARRIOTT DRIVE, DEPT 70/100.03 BETHESDA, MD 20817 TEL: 301-380-6944 FAX: 301-380-1992 ATTN: WILLIAM GROVER</p>	<p>DEVELOPER QUADRANGLE DEVELOPMENT 1001 G STREET, NW SUITE 700W WASHINGTON, DC 20001 TEL: 202-393-1999 FAX: 202-393-0548 ATTN: ROBERT J. KNOPF</p>	<p>OWNER WASHINGTON CONVENTION CENTER 801 MOUNT VERNON PLACE, NW WASHINGTON, DC 20001 TEL: 202-249-3000 ATTN: JOHN COLLINS</p>	<table border="1" style="width: 100%; border-collapse: collapse;"> <tr> <td colspan="2" style="text-align: center;">PROJECT</td> </tr> <tr> <td colspan="2" style="text-align: center;">WASHINGTON D.C. MARRIOTT MARQUIS</td> </tr> <tr> <td colspan="2" style="text-align: center;">TITLE</td> </tr> <tr> <td colspan="2" style="text-align: center;">EROSION & SEDIMENT CONTROL DETAILS</td> </tr> <tr> <td style="text-align: center;">SCALE</td> <td style="text-align: center;">DATE</td> </tr> <tr> <td style="text-align: center;">N/A</td> <td style="text-align: center;">02/13/09</td> </tr> <tr> <td style="text-align: center;">REFERENCES</td> <td style="text-align: center;">AMT PROJECT NO.</td> </tr> <tr> <td style="text-align: center;">AMT, LLC</td> <td style="text-align: center;">DC08-029</td> </tr> </table>	PROJECT		WASHINGTON D.C. MARRIOTT MARQUIS		TITLE		EROSION & SEDIMENT CONTROL DETAILS		SCALE	DATE	N/A	02/13/09	REFERENCES	AMT PROJECT NO.	AMT, LLC	DC08-029
PROJECT																			
WASHINGTON D.C. MARRIOTT MARQUIS																			
TITLE																			
EROSION & SEDIMENT CONTROL DETAILS																			
SCALE	DATE																		
N/A	02/13/09																		
REFERENCES	AMT PROJECT NO.																		
AMT, LLC	DC08-029																		

DWG NO.
PUD 370
C-2.3