

COURTYARD CASE STUDIES

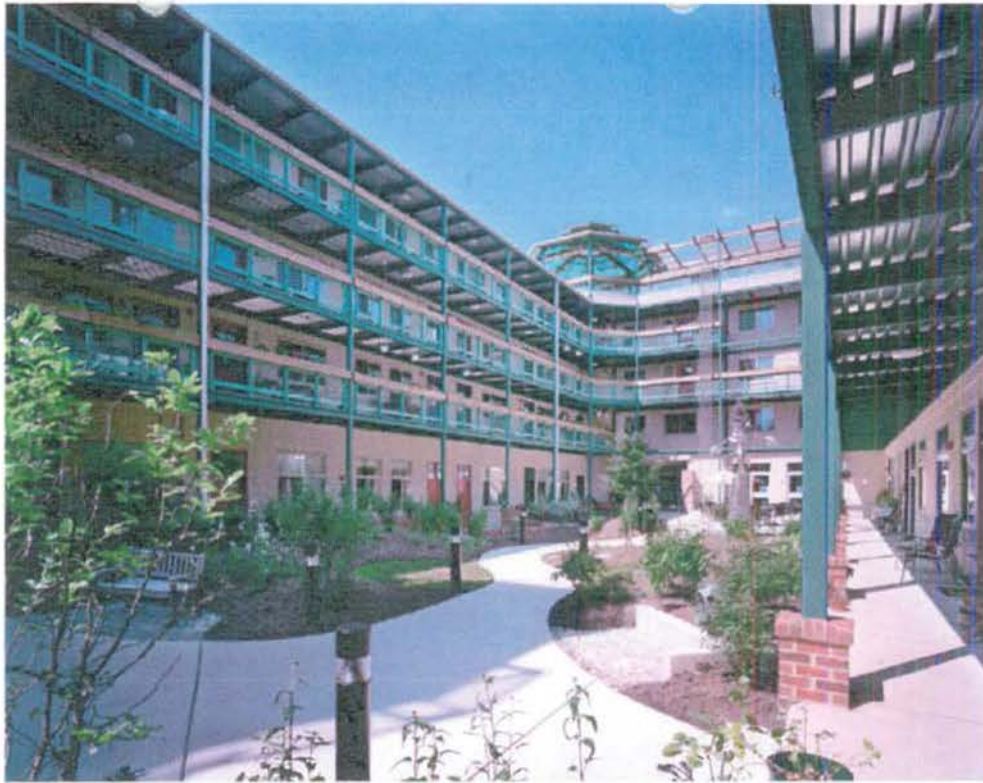
The following courtyard case studies are examples to demonstrate the use of this building element to bring light and air into a building. Georgia Commons utilizes a courtyard to for daylighting, ventilation, and to provide an urban garden for residents to look into.

Building courtyard	Length	Width
Georgia Commons, Washington, D.C.	130'	25'
Eastern Village Cohousing, Silver Spring, MD	130'	36'
Digiteo Labs, Paris, France	180'	25'
Plaza Apartments, San Francisco, CA	90'	28'
TCI Headquarters, Gurgaon, India	25'	15'
Hampden Plaza, Bethesda, MD	130'	28'
Vandrezanne Apartments, Paris, France	65'	32'

ZONING COMMISSION
District of Columbia

CASE NO. 08-08
EXHIBIT NO. 44

ZONING COMMISSION
District of Columbia
CASE NO.08-08
EXHIBIT NO.44



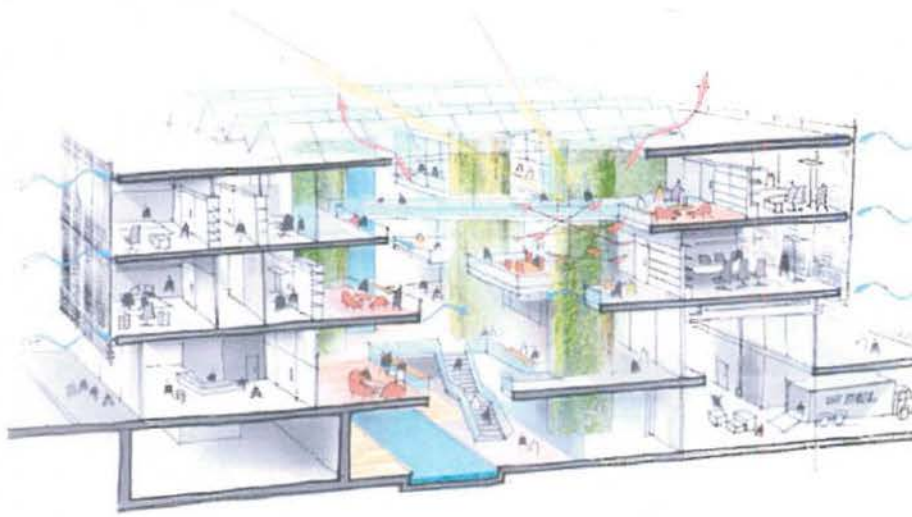
Eastern Village, Silver Spring, MD -EDG Architects



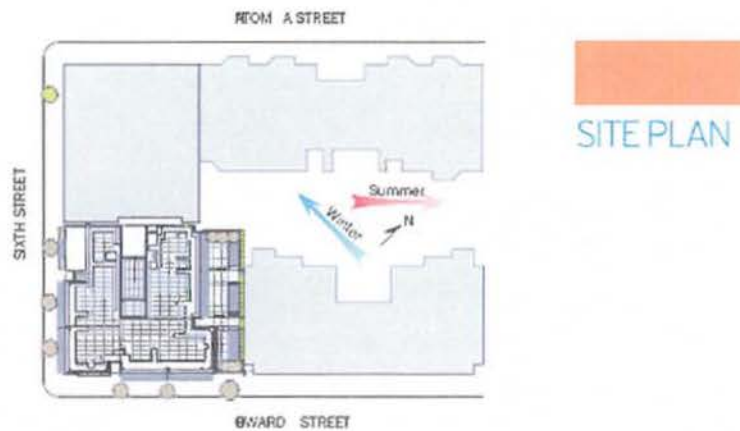
Digiteo Labs, Paris, France - Behnisch Architekten

Georgia Commons: Courtyard Case Studies

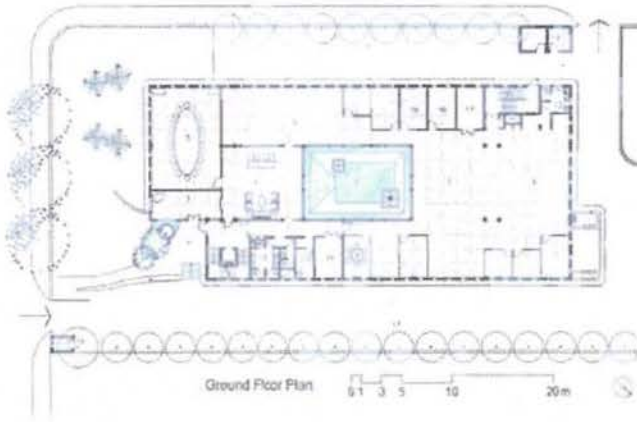
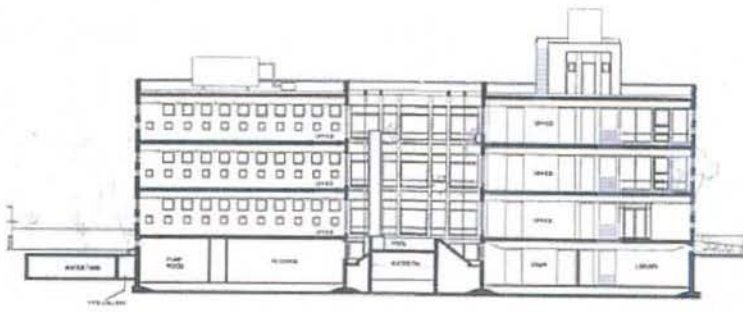




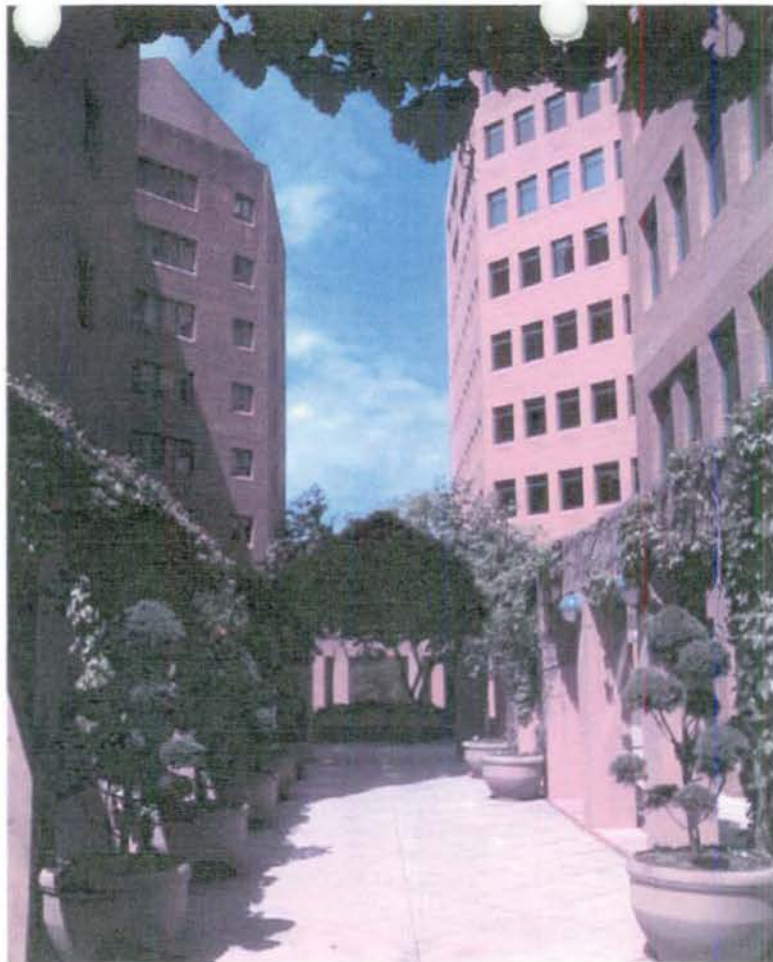
Digiteo Labs, Paris, France - Behnisch Architekten



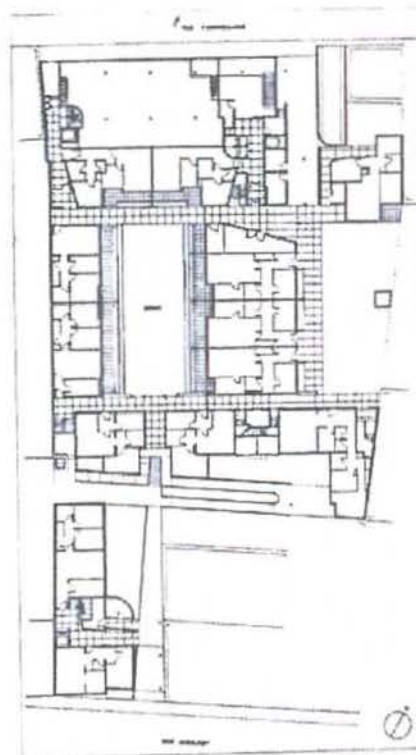
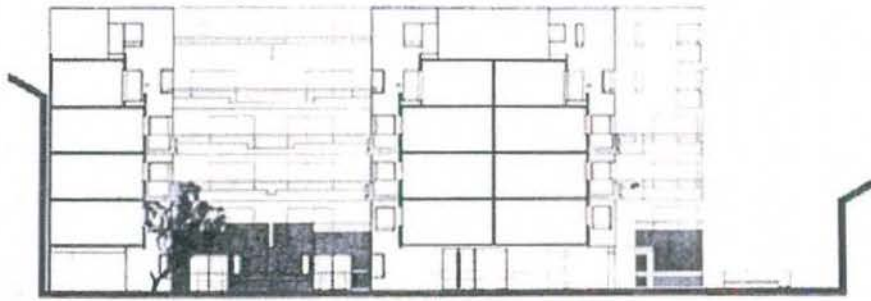
Plaza Apartments, San Francisco, CA - Leddy Maytum Stacy Architects



TCI headquarters, Gurgaon, India - AB Lall architect



Hampden Plaza, Bethesda MD - Oldham & Seltz Architects



Vandrezanne Apartments, Paris, France - Jean-Pierre Buffi