



PUD PRE-HEARING SUBMISSION

Saint Paul's College

WASHINGTON, D.C.

PUD PRE-HEARING SUBMISSION SET
APRIL 2, 2008

Saint Paul's College
WASHINGTON, D.C.

COVER SHEET



April 2, 2008



LESSARD GROUP INC.
8121 Leesburg Pike, Ste. 100
Vienna, VA 22182
P: 703.760.8344
F: 703.760.8328
www.lessardgroup.com



VIVA INC.
20231 Century Blvd.
Germantown, MD 20874
P: 301.814.1100
F: 301.816.2382
www.viva.com



STUDIO 39
6416 Connelley Dr., Ste. 1007A
Arlington, VA 22210
P: 703.718.8000
F: 703.718.8503
www.studio39.com

EYA.146a.00

CO-00

ZONING COMMISSION
District of Columbia
CASE NO.07-27
EXHIBIT NO.16B



THIS DOCUMENT IS THE PROPERTY OF THE ARCHITECT AND IS TO BE USED ONLY FOR THE PROJECT AND SITE SPECIFICALLY IDENTIFIED HEREIN. IT IS NOT TO BE REPRODUCED, COPIED, OR TRANSMITTED IN ANY FORM OR BY ANY MEANS, ELECTRONIC OR MECHANICAL, INCLUDING PHOTOCOPYING, RECORDING, OR BY ANY INFORMATION STORAGE AND RETRIEVAL SYSTEM, WITHOUT THE WRITTEN PERMISSION OF THE ARCHITECT.

Saint Paul's College
WASHINGTON, D.C.

THE NEIGHBORHOODS OF
EYA

ILLUSTRATIVE SITE PLAN

April 2, 2008



LESSARD GROUP INC.
8521 Leesburg Pike, Ste. 700
Vienna, VA 22182
P: 703.760.9244
F: 703.760.9228
www.lessardgroup.com



VIKI INC.
2011 Century Blvd.
Germantown, MD 20874
P: 301.316.4100
F: 301.918.2262
www.vika.com



STUDIO 39
5416 Greenleaf Dr., Ste. 100-A
Alexandria, VA 22310
P: 703.719.8000
F: 703.719.6003
www.studio39.com

EYA.146a.00



L1-01



Saint Paul's College
WASHINGTON, D.C.

THE NEIGHBORHOODS OF



OVERALL SITE PLAN

April 2, 2008



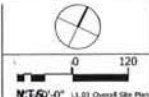
LESSARD GROUP INC.
8523 Lambing Pike, Ste. 200
Vienna, VA 22182
P: 703.760.8204
F: 703.760.8226
www.lessardgroup.com



VIKI INC.
30751 Center Blvd.
Centreville, MD 22004
P: 703.594.6320
F: 703.446.2242
www.viki.com



STUDIO 39
3415 Greenleaf Dr., Ste. 100-A
Alexandria, VA 22304
P: 703.719.8009
F: 703.719.8029
www.studio39.com



L1.01A



LEGEND

- STREET LIGHT
- BENCH
- BIOSWALE
- BORETENTION/RAIN GARDEN

TYPICAL TREE SPECIES

SHADE TREES

- SHINGLE OAK
- SILVER LINDEN
- VALLEY FORGE AMERICAN ELM
- RED MAPLE

ORNAMENTAL TREES

- SERVICEBERRY
- KOUSA DOGWOOD
- RIVER BIRCH
- EASTERN REDBUD
- CRAPE MYRTLE
- HIGAN CHERRY

EVERGREEN TREES

- LITTLE GEM MAGNOLIA
- AMERICAN HOLLY
- FOSTER'S HOLLY

Saint Paul's College
WASHINGTON, D.C.

THE NEIGHBORHOODS OF



SHEET KEY

April 2, 2008



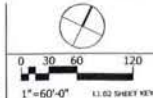
LESSARD GROUP INC.
8221 Leesburg Pike, Ste. 750
Vienna, VA 22182
P: 703.760.8398
F: 703.760.8328
www.lessardgroup.com



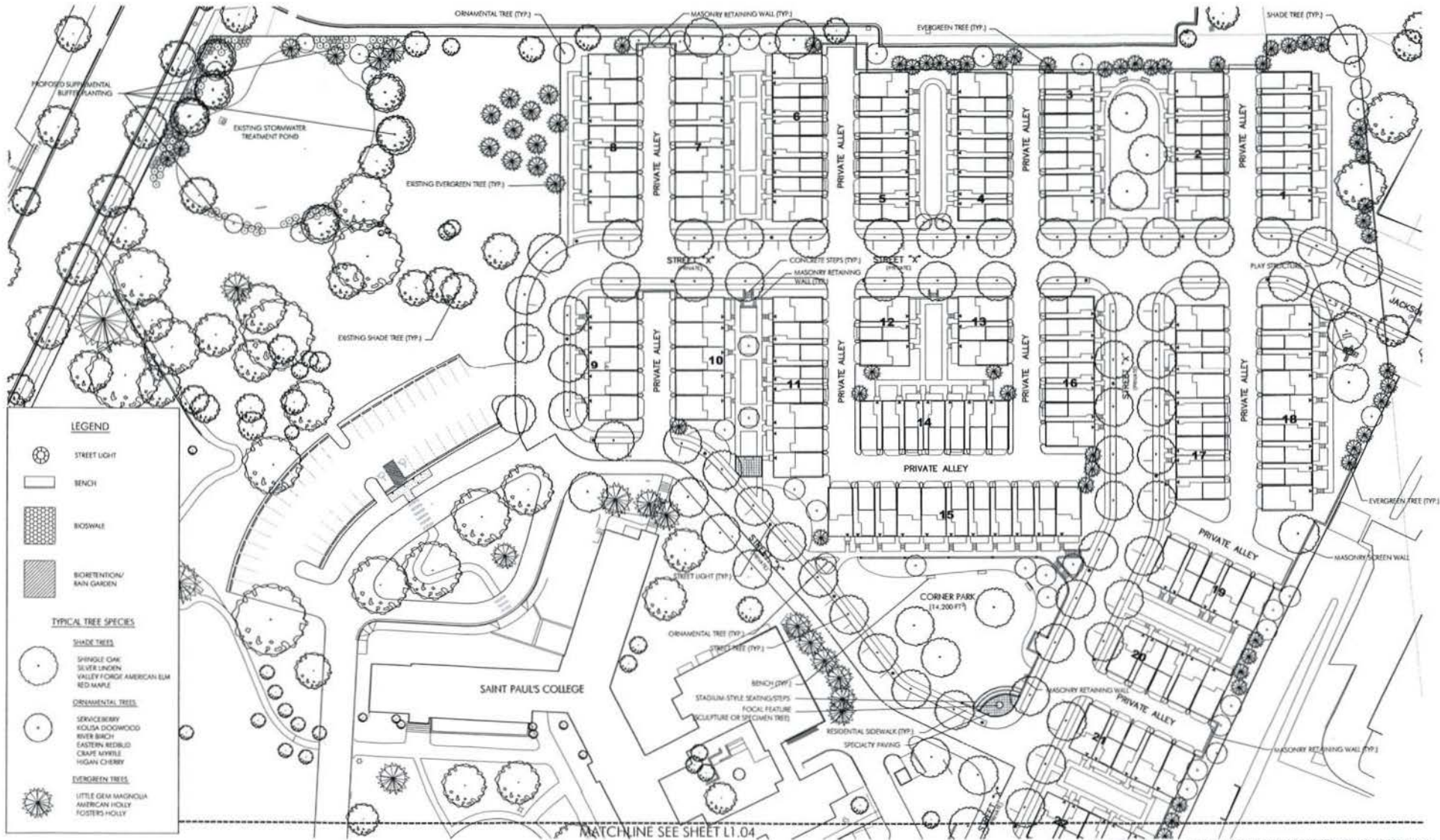
VIKA INC.
20231 Carberry Blvd.
Silver Spring, MD 20910
P: 301.588.4100
F: 301.588.2302
www.vika.com



STUDIO 39
9416 Greenbelt Cr. Ste. 330-A
Greenbelt, VA 22204
P: 703.718.6000
F: 703.718.6000
www.studio39.com



L1.02



Saint Paul's College
WASHINGTON, D.C.

THE NEIGHBORHOODS OF



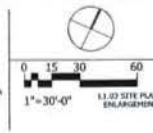
SITE PLAN ENLARGEMENT

April 2, 2008

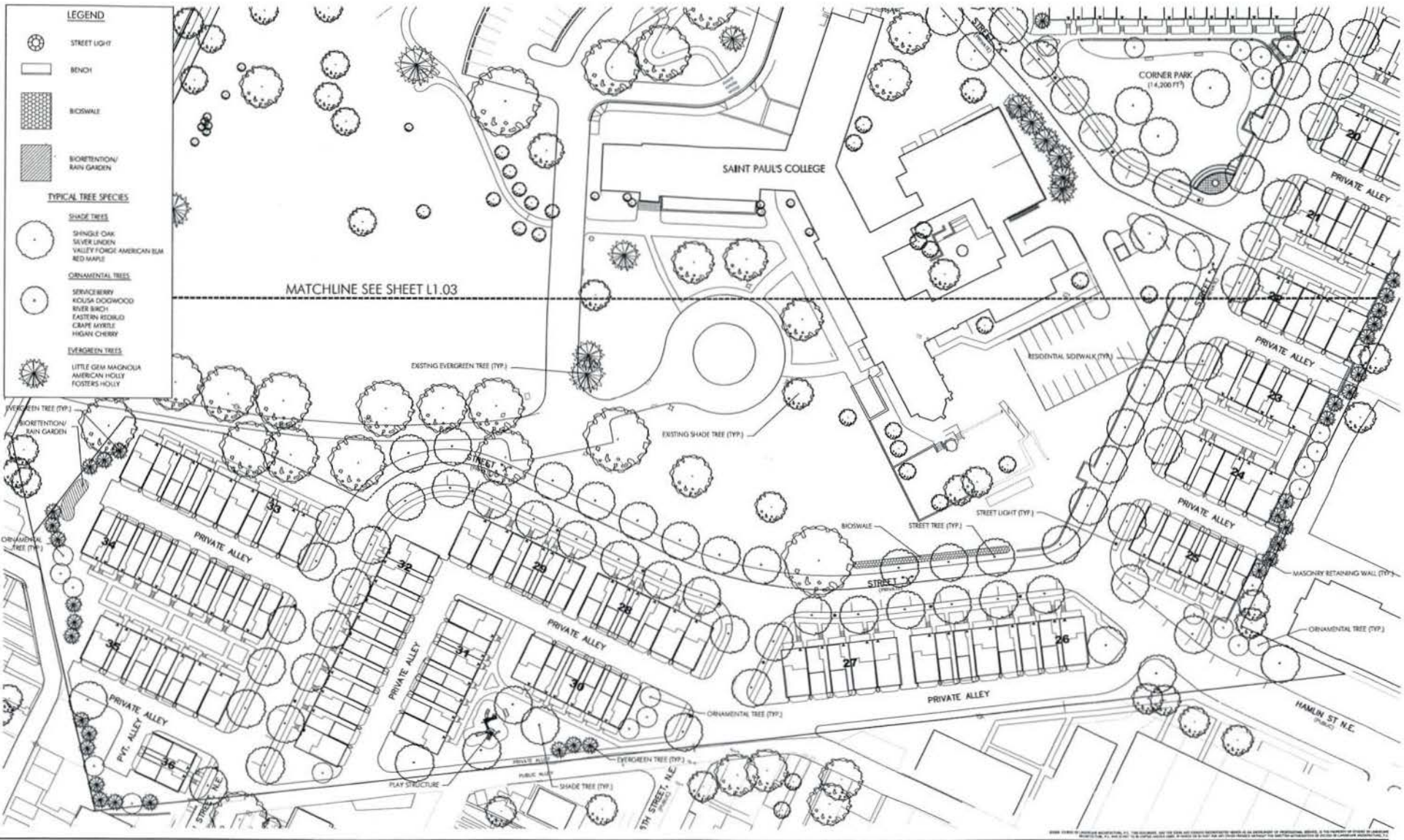
LESSARD GROUP INC.
8321 Leesburg Pike, Ste. 750
Vienna, VA 22186
P: 703.763.9194
F: 703.760.9118
www.lessardgroup.com

VIKA, INC.
20211 Carillon Blvd
Germantown, MD 20874
P: 301.964.4100
F: 301.914.2202
www.vika.com

STUDIO 39
6410 Greenbriar Dr., Ste. 100A
Arlington, VA 22215
P: 703.774.8000
F: 703.774.8000
www.studio39.com



L1.03



LEGEND

- STREET LIGHT
- BENCH
- SIDEWALK
- BIORETENTION/RAIN GARDEN

TYPICAL TREE SPECIES

SHADE TREES

- SHINGLE OAK
- SILVER LINDEN
- VALLEY FORD AMERICAN ELM
- RED MAPLE

ORNAMENTAL TREES

- SERVICE BERRY
- KOUSA DOGWOOD
- RIVER BIRCH
- EASTERN REDKID
- CRAPE MYRTLE
- HIGHWY CHERRY

EVERGREEN TREES

- LITTLE GEM MAGNOLIA
- AMERICAN HOLLY
- FOSTER'S HOLLY

Saint Paul's College
WASHINGTON, D.C.

THE NEIGHBORHOODS OF
EYA

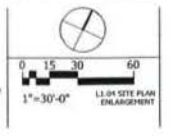
SITE PLAN ENLARGEMENT

April 2, 2008

LESSARD GROUP INC.
8021 Leesburg Pike, Ste. 750
Vienna, VA 22186
P: 703.763.8744
F: 703.763.8768
www.lessardgroup.com

VIFA, INC.
70331 Centerline Blvd
Crestwood, MO 63024
P: 314.918.1430
F: 314.918.1262
www.vifa.com

STUDIO 39
9418 Greenway Dr., Ste. 100A
Alexandria, VA 22304
P: 703.718.8200
F: 703.718.8200
www.studio39.com



L1.04



Saint Paul's College
WASHINGTON, D.C.

THE NEIGHBORHOODS OF



CORNER PARK ENLARGEMENT

April 2, 2008

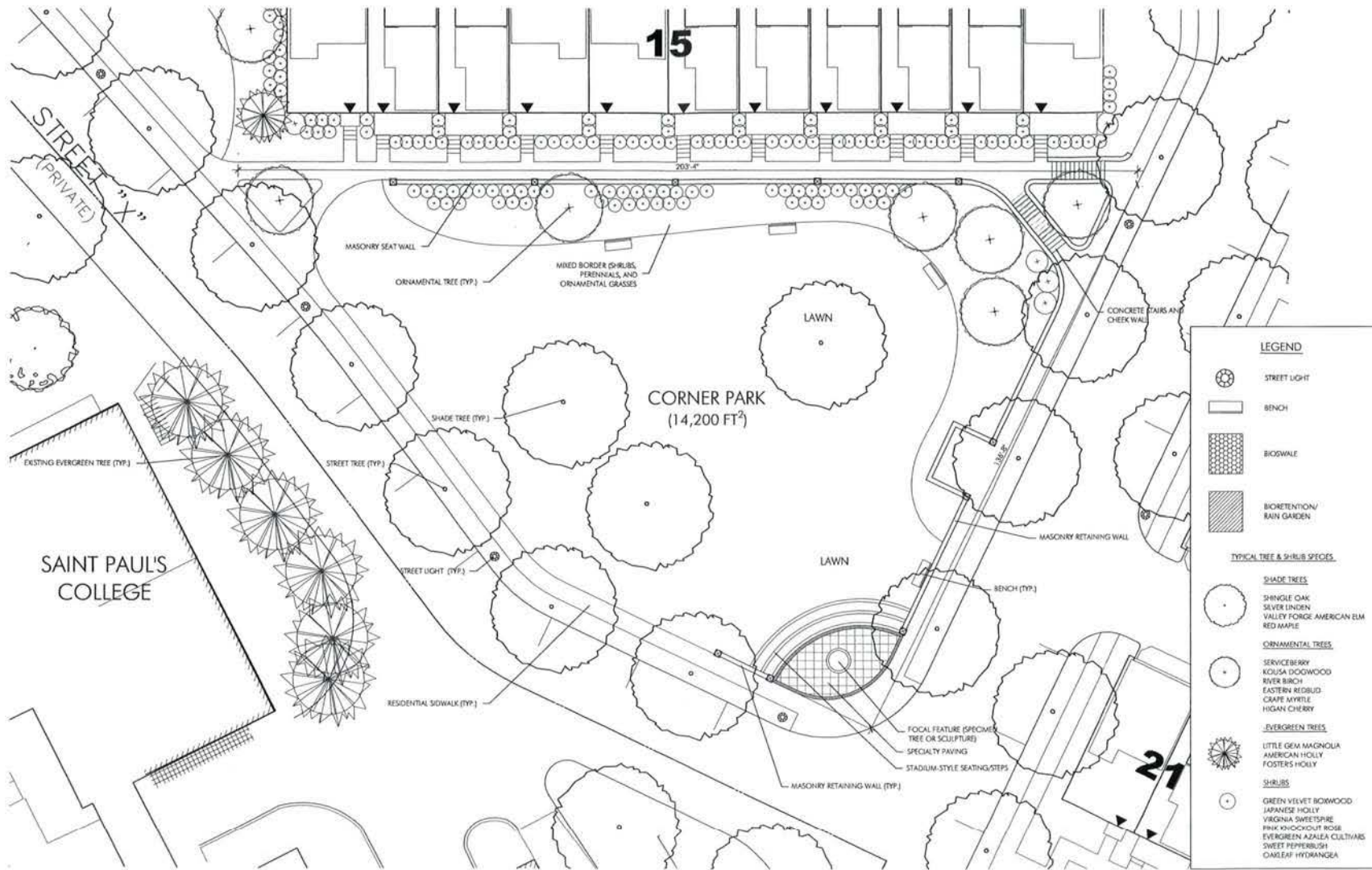
LESSARD GROUP INC.
8221 Leesburg Pike, Ste. 700
Vienna, VA 22182
P: 703.260.9344
F: 703.262.8328
www.lessardgroup.com

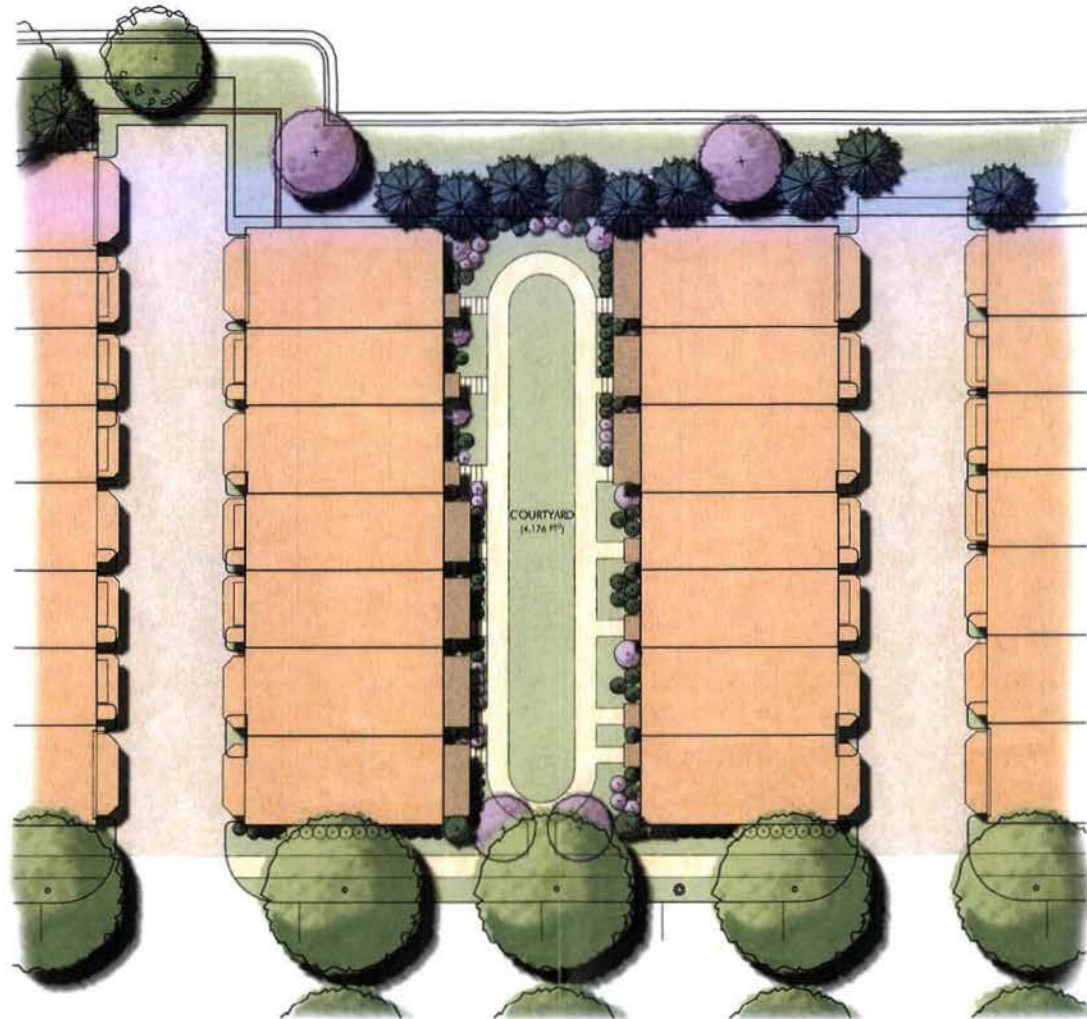
VIKA, INC.
10711 Century Blvd.
Crumptonville, MO 20074
P: 703.916.6300
F: 351.916.2362
www.vika.com

STUDIO 39
8168 Greenlawn Dr., Ste. 100-A
Alexandria, VA 22315
P: 703.719.6300
F: 703.719.6303
www.studio39.com

0 5 10 20
1"=10'-0"
CORNER PARK

L1.05





NOTE: THESE PLANS AND SPECIFICATIONS ARE THE PROPERTY OF THE ARCHITECT OR ENGINEER AND ARE NOT TO BE REPRODUCED, COPIED, OR TRANSMITTED IN ANY FORM OR BY ANY MEANS, ELECTRONIC OR MECHANICAL, WITHOUT THE WRITTEN PERMISSION OF THE ARCHITECT OR ENGINEER. THE ARCHITECT OR ENGINEER SHALL BE RESPONSIBLE FOR THE ACCURACY OF THE INFORMATION PROVIDED HEREON.

Saint Paul's College
WASHINGTON, D.C.

THE NEIGHBORHOODS OF



COURTYARD ENLARGEMENT

April 2, 2008



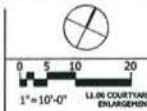
LESSARD GROUP INC.
8321 Leesburg Pike, Ste. 700
Vienna, VA 22180
P: 703.760.5344
F: 703.760.6338
www.lessardgroup.com



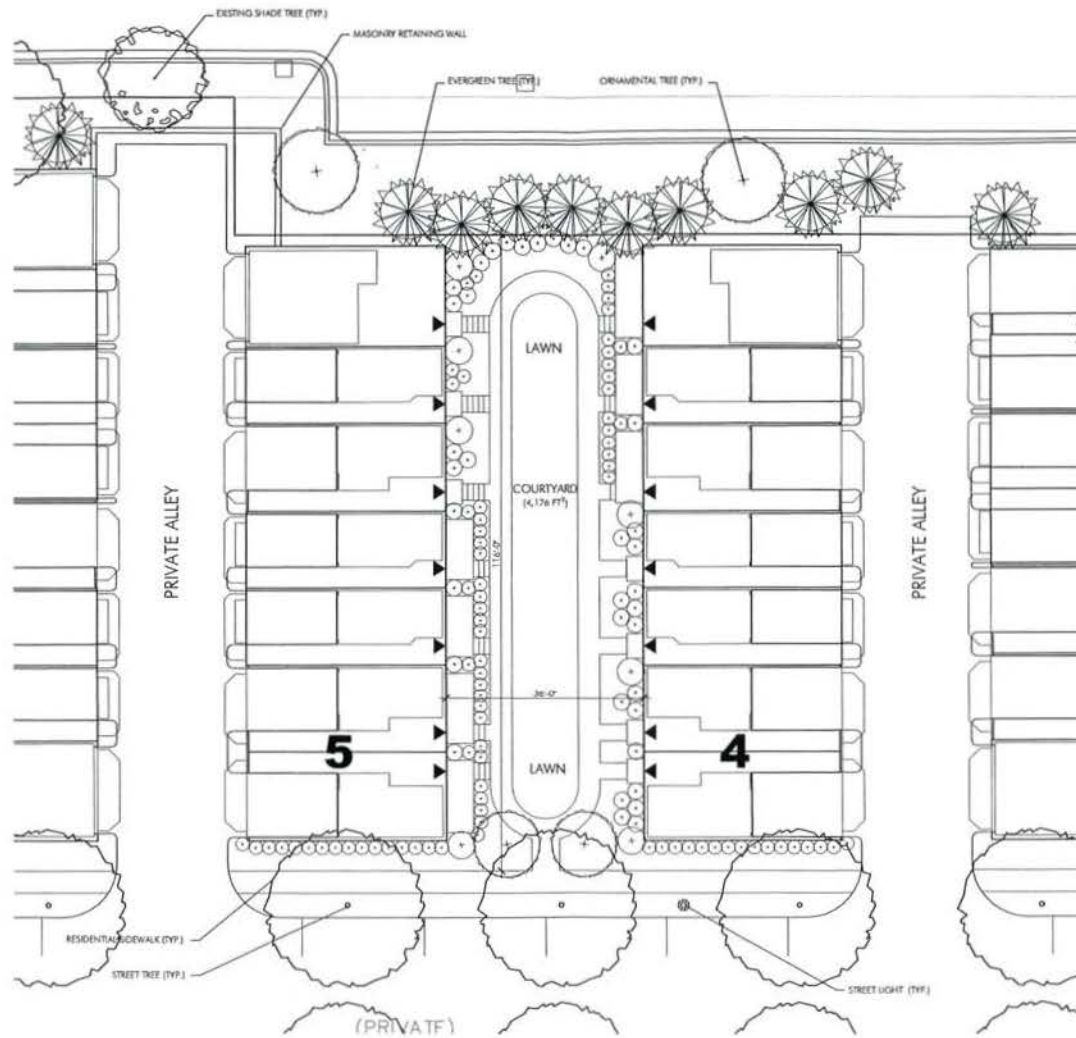
VIFA, INC.
20221 Centerville Rd.
Germantown, MD 20874
P: 301.914.6100
F: 301.914.2863
www.vifa.com



STUDIO 39
8418 Greenleaf Dr., Ste. 100 A
Alexandria, VA 22310
P: 703.719.6000
F: 703.719.0003
www.studio39.com



L1.06



LEGEND	
	STREET LIGHT
	BENCH
	BIOWALL
	BIORETENTION/ RAIN GARDEN
TYPICAL TREE & SHRUB SPECIES	
<u>SHADE TREES</u>	
	SHINGO OAK SILVER LINEN VALLEY FORCE AMERICAN ELM RED MAPLE
<u>ORNAMENTAL TREES</u>	
	SERVICE BERRY KOUSA DOGWOOD RIVER BIRCH EASTERN REDBUD CRANE WYTILE HIGAN CHERRY
<u>EVERGREEN TREES</u>	
	LITTLE GEM MAGNOLIA AMERICAN HOLLY FOSTER'S HOLLY
<u>SHRUBS</u>	
	GREEN VELVET BOWWOOD JAPANESE HOLLY VIRGINIA SWEETSPICE PINK KNOCKOUT ROSE EVERGREEN AZALEA CULTIVARS SWEET PEPPERBUSH OAKLEAF HYDRANGEA

Saint Paul's College
WASHINGTON, D.C.

THE NEIGHBORHOODS OF



COURTYARD ENLARGEMENT

April 2, 2008



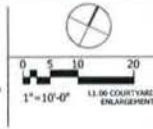
LESSARD GROUP INC.
6021 Leesburg Pike, Ste. 300
Vienna, VA 22182
P: 703.360.3344
F: 703.360.9139
www.lessardgroup.com



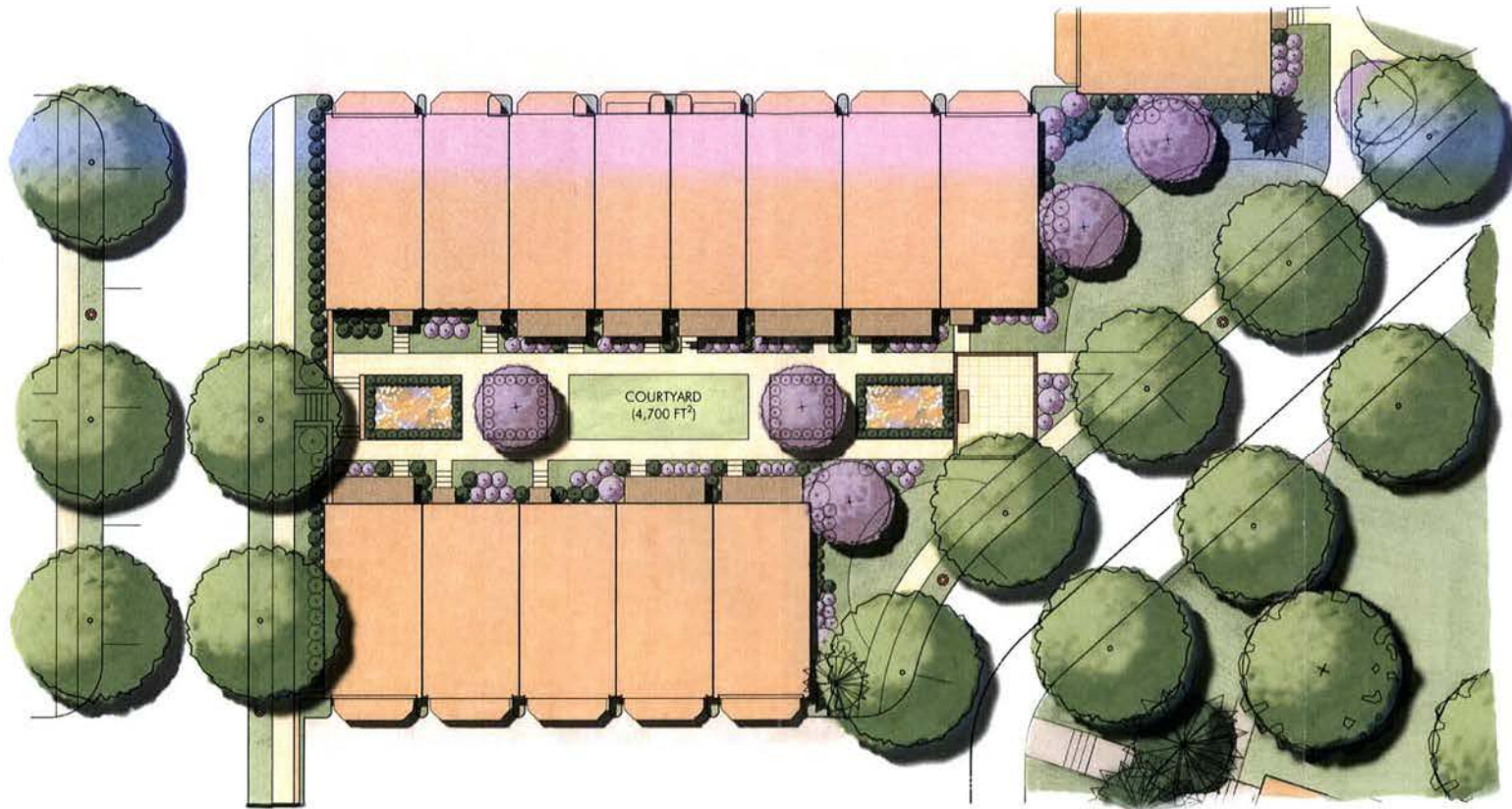
VIKA INC.
20211 Center, #102
Germantown, MD 20874
P: 301.814.4126
F: 301.316.2342
www.vika.com



STUDIO 39
5416 Greenbelt Dr., Ste. 100-A
Bethesda, VA 22109
P: 301.714.8009
F: 301.728.6003
www.studio39.com



L1.06A



Saint Paul's College
WASHINGTON, D.C.

THE NEIGHBORHOODS OF
EYA

COURTYARD ENLARGEMENT

April 2, 2008



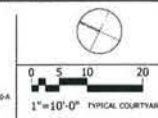
LESSARD GROUP INC.
8521 Leesburg Pike, Ste. 700
Vienna, VA 22187
P: 703.760.8294
F: 703.760.8228
www.lessardgroup.com



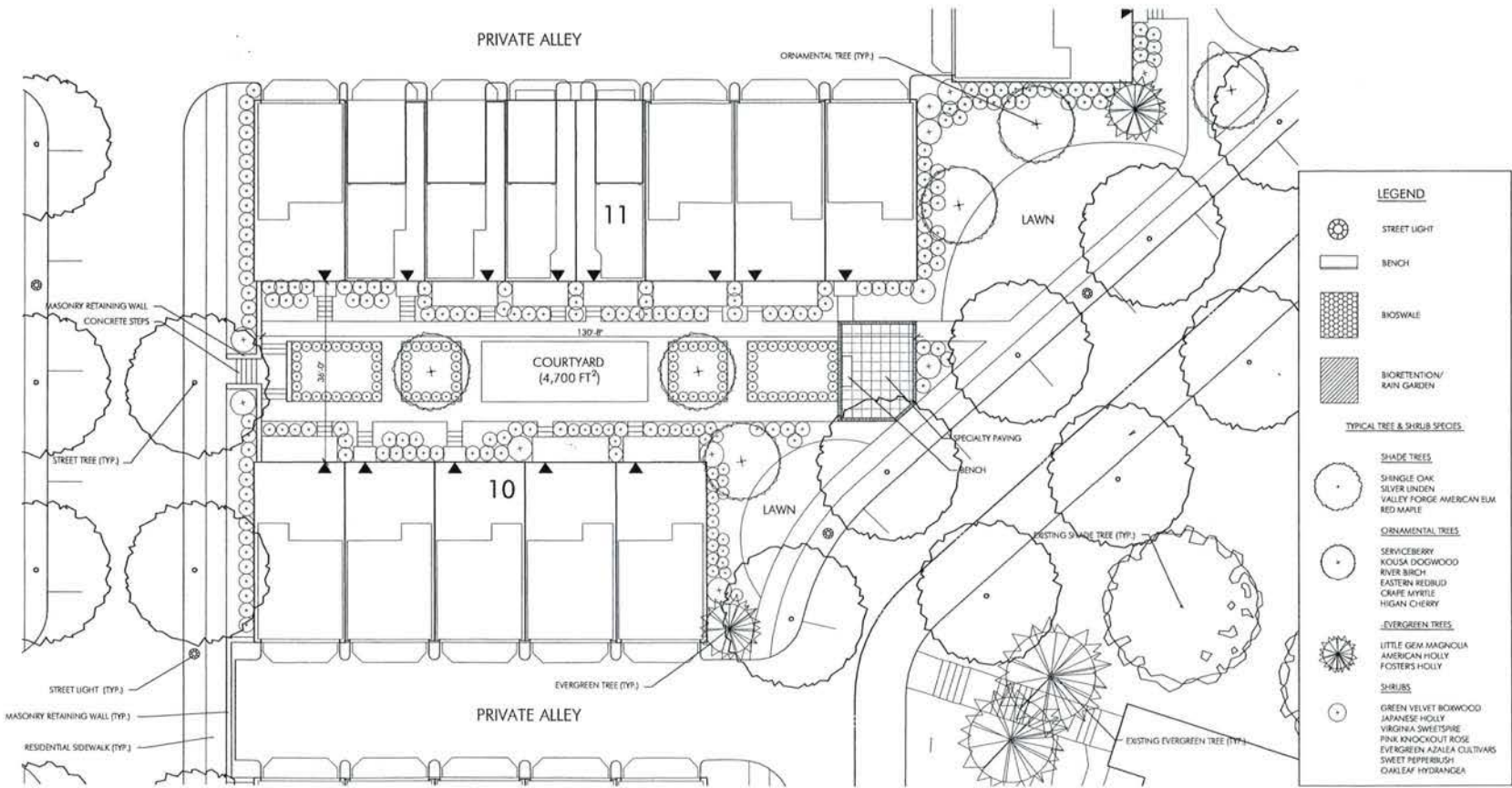
VIKA, INC.
20215 Century Blvd.
Greenwood, MD 20874
P: 301.916.4300
F: 301.916.2342
www.vika.com



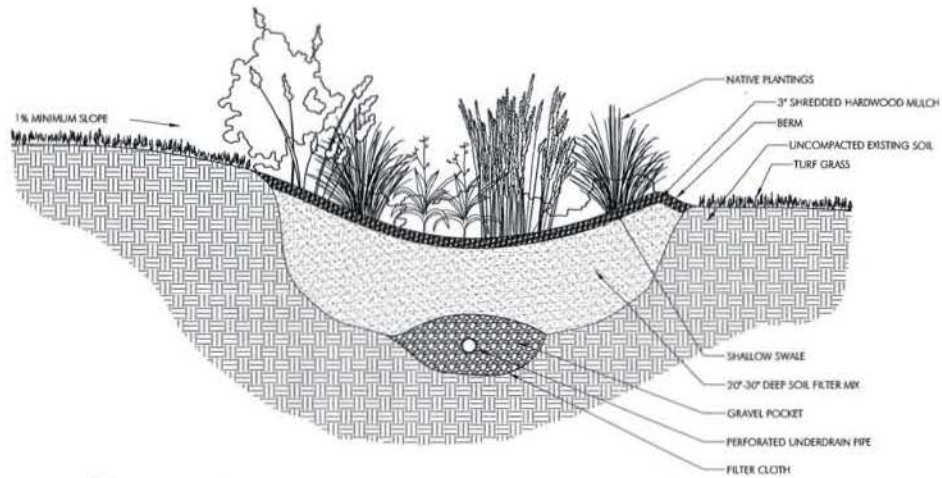
STUDIO 39
9118 Greenleaf Dr., Ste. 150-A
Annapolis, VA 21410
P: 703.719.1000
F: 703.719.4003
www.studio39.com



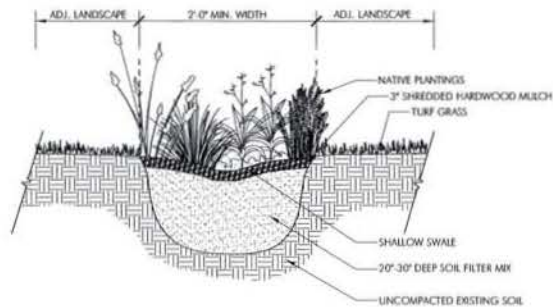
L1.07



© 2008 STUDIO 39 ARCHITECTURAL, INC. THE COURTYARD AND THE BENCH AND BIODIVERSITY SPECIES ARE AN INVENTION OF ARCHITECTURAL, INC. IT IS THE PROPERTY OF STUDIO 39 ARCHITECTURAL, INC. AND IS NOT TO BE REPRODUCED OR TRANSMITTED IN ANY FORM OR BY ANY MEANS, ELECTRONIC OR MECHANICAL, INCLUDING PHOTOCOPYING, RECORDING, OR BY ANY INFORMATION STORAGE AND RETRIEVAL SYSTEM, WITHOUT PERMISSION IN WRITING FROM STUDIO 39 ARCHITECTURAL, INC.



1 BIORETENTION AREA - RAIN GARDEN
Scale: 3/4" = 1'-0"
SECTION



2 BIOSWALE
Scale: 3/4" = 1'-0"
SECTION

**BIOSWALE & BIORETENTION/RAIN GARDEN
TYPICAL PLANT SPECIES**

ORNAMENTAL TREES:

- FRINGE TREE
- SERVICE BERRY
- SWEETBAY MAGNOLIA
- BLACK GUM

SHRUBS:

- RED CHOKEBERRY
- BLACK CHOKEBERRY
- BUTTON BUSH
- REDTIG DOGWOOD
- WITCH HAZEL
- ST. JOHN'S WORT
- INKBERRY
- WINTERBERRY
- VIRGINIA SWEET SPIRE
- SPICE BUSH
- WAX MYRTLE
- RAYBERRY
- SWEET AZALEA
- SWAMP AZALEA

PERENNIALS

- NEW ENGLAND ASTER
- MARSH MARGOLD
- JOE PYE WEEED
- SWAMP SUNFLOWER
- SENSITIVE FERN
- CINNAMON FERN
- ROYAL FERN
- SWITCH GRASS
- CONEFLOWER
- WRINKLE LEAF GOLDENROD
- WILLOWLEAF BLUESTAR
- COLLARBINE
- SWAMP MILKWEED
- RIVER CATS
- VIRGINIA BLUE BELL

© 2008 EYAN Group, Inc. All rights reserved. This drawing is the property of EYAN Group, Inc. and is not to be reproduced, stored in a retrieval system, or transmitted in any form or by any means, electronic, mechanical, photocopying, recording, or by any information storage and retrieval system, without the prior written permission of EYAN Group, Inc.

Saint Paul's College
WASHINGTON, D.C.



SITE DETAILS

April 2, 2008



LESSARD GROUP INC.
8721 Leesburg Pike, Ste. 200
Vienna, VA 22182
P: 703.760.0344
F: 703.760.8538
www.lessardgroup.com



VIKI, INC.
20231 Century Blvd.
Centreville, VA 22110
P: 703.773.0000
F: 703.773.8633
www.viki.com

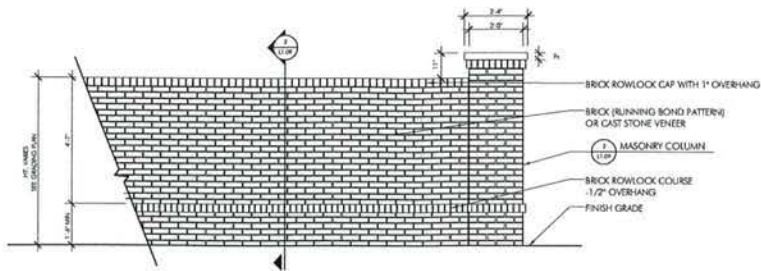


STUDIO 39
9415 Greenleaf Dr., Ste. 100-A
Arlington, VA 22210
P: 703.773.0000
F: 703.773.8633
www.studio39.com

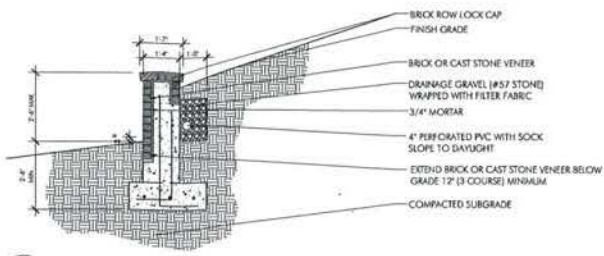


N.T.S. 1:1 OR SITE DETAILS

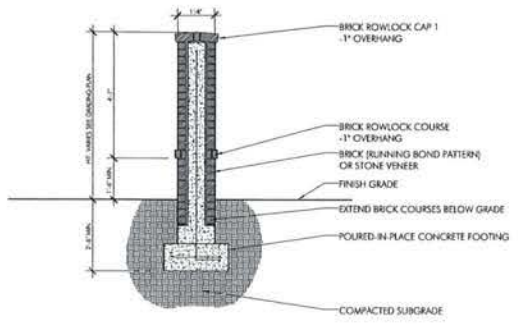
L1.08



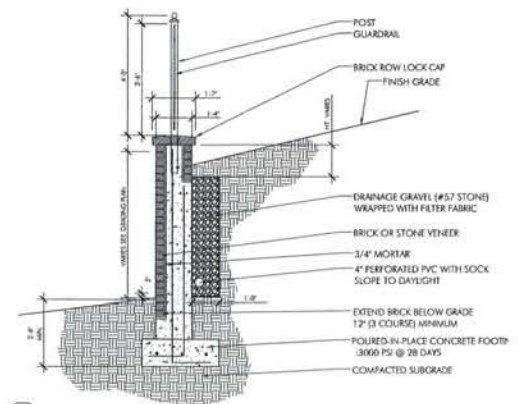
1 MASONRY SCREEN WALL
Scale: 1/2" = 1'-0"
DETAIL



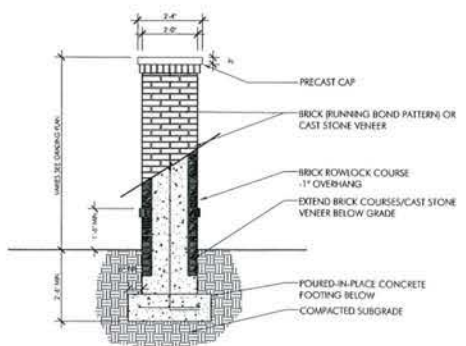
4 MASONRY RETAINING WALL
Scale: 1/2" = 1'-0"
SECTION



2 MASONRY SCREEN WALL
Scale: 1/2" = 1'-0"
SECTION



5 MASONRY RETAINING WALL WITH GUARDRAIL
Scale: 1/2" = 1'-0"
SECTION



3 MASONRY COLUMN
Scale: 1/2" = 1'-0"
ELEVATION/SECTION



TYPICAL MASONRY WALL

EARLY CHILDHOOD PLAY STRUCTURE PRODUCT INFORMATION



MODEL: HOME/RESOLVE MSC6407P (OR APPROVED EQUIV)
 QUANTITY: PER PLAN
 MANUFACTURER: KOMPAN, Inc.
 930 BROADWAY
 TACOMA, WA 98402
 (800) 426-9788

SIZE: MIN. USE ZONE: 25'-4" x 29'-9"
 COLOR: TO BE SPECIFIED BY LANDSCAPE ARCHITECT
 NOTE: INSTALLED PER MANUFACTURERS RECOMMENDATIONS

6 EARLY CHILDHOOD PLAY STRUCTURE
Scale: NTS
PRODUCT INFORMATION

EARLY CHILDHOOD PLAY STRUCTURE PRODUCT INFORMATION

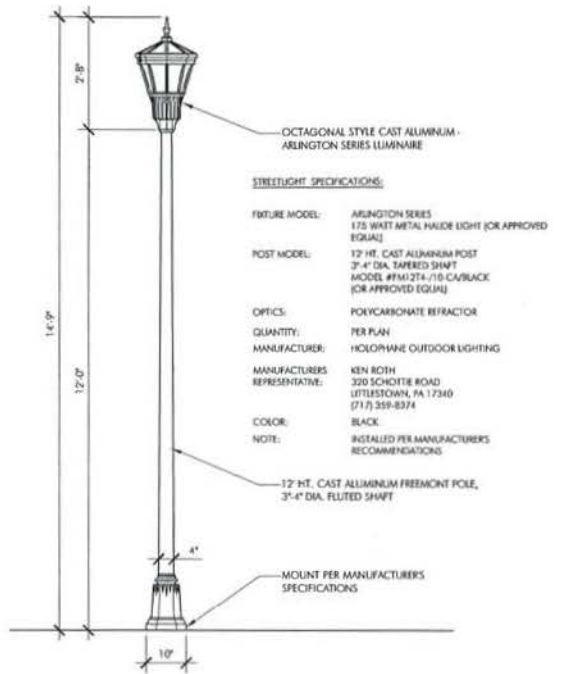


MODEL: CATALYST MGS42000P (OR APPROVED EQUIV)
 QUANTITY: PER PLAN
 MANUFACTURER: KOMPAN, Inc.
 930 BROADWAY
 TACOMA, WA 98402
 (800) 426-9788

SIZE: MIN. USE ZONE: 34'-11" x 27'-11"
 COLOR: TO BE SPECIFIED BY LANDSCAPE ARCHITECT
 NOTE: INSTALLED PER MANUFACTURERS RECOMMENDATIONS

7 EARLY CHILDHOOD PLAY STRUCTURE
Scale: NTS
PRODUCT INFORMATION

BASED UPON: LANDSCAPE ARCHITECTURE, P.L.L.C. DOCUMENT AND THE PERMITS AND DESIGN DEVELOPMENT RECORD AS SUBMITTED TO PROFESSIONAL AGENCIES, TO THE REGISTRY OF ARCHITECTS AND ENGINEERS OF VIRGINIA, P.L.L.C. 2008-04-08. ALL RIGHTS RESERVED. THIS DOCUMENT IS THE PROPERTY OF LANDSCAPE ARCHITECTURE, P.L.L.C. AND IS NOT TO BE REPRODUCED OR TRANSMITTED IN ANY FORM OR BY ANY MEANS, ELECTRONIC OR MECHANICAL, WITHOUT THE WRITTEN PERMISSION OF LANDSCAPE ARCHITECTURE, P.L.L.C.

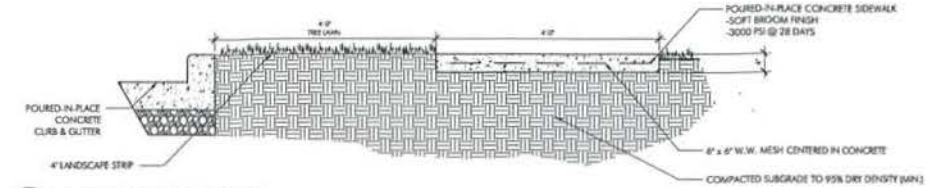


STREETLIGHT SPECIFICATIONS:

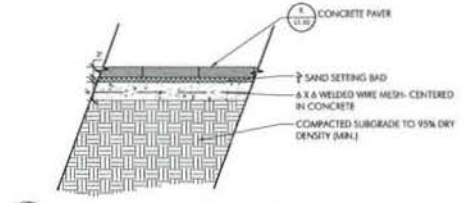
FIXTURE MODEL: ARLINGTON SERIES
175 WATT METAL HALIDE LIGHT (OR APPROVED
EQUIVA)

POST MODEL: 12 FT. CAST ALUMINUM POST
3/4\"/>

1 RESIDENTIAL STREETLIGHT
1:1.10 Scale: 1/2" = 1'-0"
ELEVATION



3 TYPICAL RESIDENTIAL SIDEWALK
1:1.10 Scale: 1" = 1'-0"
SECTION



4 SPECIALTY PAVING (PEDESTRIAN RATEL)
1:1.10 Scale: 1" = 1'-0"
SECTION



6 CONCRETE PAVER
1:1.10 Scale: N.T.S.
PRODUCT INFORMATION

PAVER PRODUCT INFORMATION

MODEL: FIRST ARCHITECTURAL PAVERS
WITH FLUOR FINISH (OR APPROVED EQUIVA)

QUANTITY: PER PLAN

MANUFACTURER: HANOVER ARCH. PRODUCTS
240 BENDER ROAD
HANOVER, PA 17331
PH: 717.637.0500
FX: 717.637.7145
WWW.HANOVERPAVERS.COM

COLOR: TAN

NOTE: INSTALLED PER MANUFACTURERS
RECOMMENDATIONS

BENCH PRODUCT INFORMATION

MODEL: MISTON W/ CENTER ARM
(OR APPROVED EQUIVA)

QUANTITY: PER PLAN

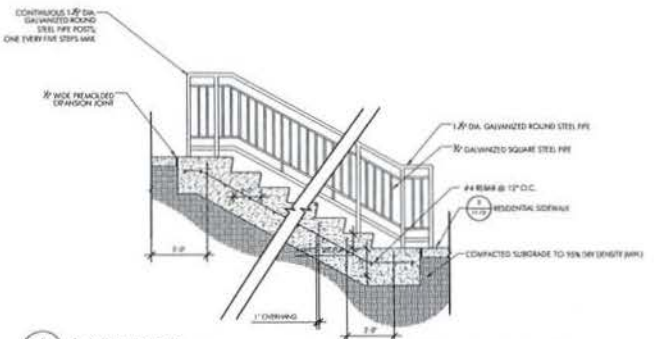
MANUFACTURER: MAGLEN FURNITURE SYSTEMS, LTD
TECHNASHY STREET
WOODSTOCK, ON N4S7W1
(TEL) 519.539.6776
WWW.MAGLEN.COM

COLOR: BLACK

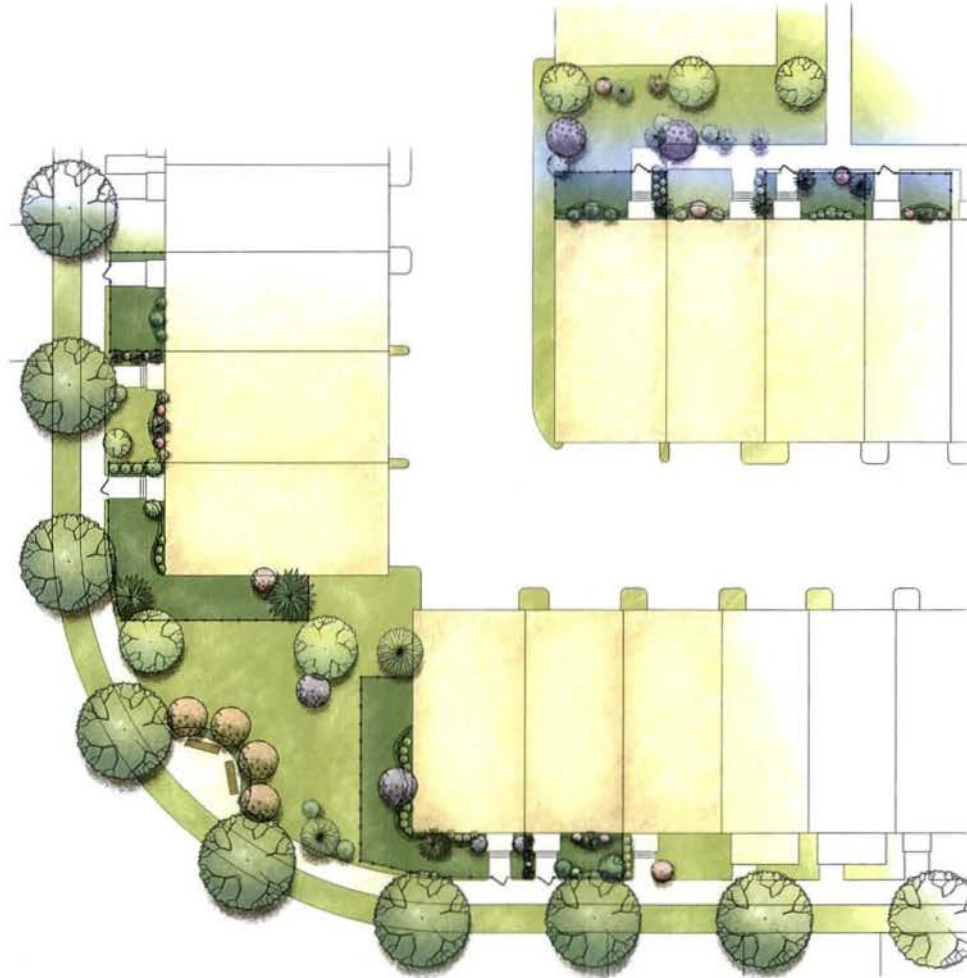
NOTE: INSTALLED PER MANUFACTURERS
RECOMMENDATIONS



2 BENCH
1:1.10 Scale: N.T.S.
PRODUCT INFORMATION



5 CONCRETE STAIRS
1:1.10 Scale: 1/2" = 1'-0"
ELEVATION



= PRIVATE OPEN SPACE

Saint Paul's College
WASHINGTON, D.C.

THE NEIGHBORHOODS OF
EYA

PRIVATE OPEN SPACE EXHIBIT

April 2, 2008



LESSARD GROUP INC.
8021 Leesburg Pike, Ste. 200
Vienna, VA 22182
P: 703.760.8344
F: 703.760.8328
www.lessardgroup.com



VVKA INC.
2021 Century Blvd.
Compton, VA 22537
P: 703.516.4100
F: 703.516.2282
www.vvka.com



STUDIO 39
9418 Greenleaf Dr., Ste. 100-A
Alexandria, VA 22310
P: 703.719.8200
F: 703.719.8583
www.studio39.com

EYA.146a.00



EYA.146a.001

L1.11



Saint Paul's College
WASHINGTON, D.C.



BUILDING COLOR ELEVATION

SEPTEMBER 10, 2007



LESSARD GROUP INC.
8511 Leesburg Pike, Ste. 700
Vienna, VA 22182
P: 703.760.8344
F: 703.760.9708
www.lessardgroup.com



VIKI, INC.
22015 Century Blvd.
Glenburnie, MD 20724
P: 301.916.4130
F: 301.916.4292
www.viki.com



STUDIO 39
4618 Greenbelt Dr., Ste. 1054
Alexandria, VA 22315
P: 703.718.6300
F: 703.718.6303
www.studio39.com

EYA.146a.00



N.T.S.

A-EC1



Saint Paul's College
WASHINGTON, D.C.



BUILDING COLOR ELEVATION

SEPTEMBER 10, 2007



LESSARD GROUP INC.
8231 Lombury Pike, Ste. 700
Vienna, VA 22182
P: 703.760.3544
F: 703.760.8328
www.lessardgroup.com



VIKI, INC.
20701 Century Blvd
Dumfriesshire, MD 20814
P: 301.516.4120
F: 301.516.2202
www.viki.com



STUDIO 39
6416 Greenleaf Ct., Ste. 1004
Arlington, VA 22218
P: 703.778.6500
F: 703.778.6003
www.studio39.com

EYA.1468.00



N.T.S.

A-EC2



Saint Paul's College
WASHINGTON, D.C.



BUILDING COLOR ELEVATION

SEPTEMBER 10, 2007



LESSARD GROUP INC.
8521 Leesburg Pike, Ste. 700
Vienna, VA 22182
P: 703.760.8394
F: 703.760.8708
www.lessardgroup.com



VIKI, INC.
20251 Century Blvd
Greenbelt, MD 20746
P: 301.315.4100
F: 301.315.2102
www.viki.com

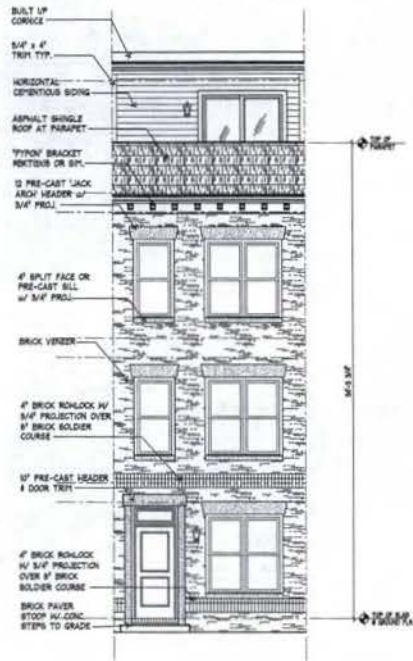


STUDIO 39
8115 Greenway Ct., Ste. 104-A
Alexandria, VA 22304
P: 703.719.4300
F: 703.719.4303
www.studio39.com

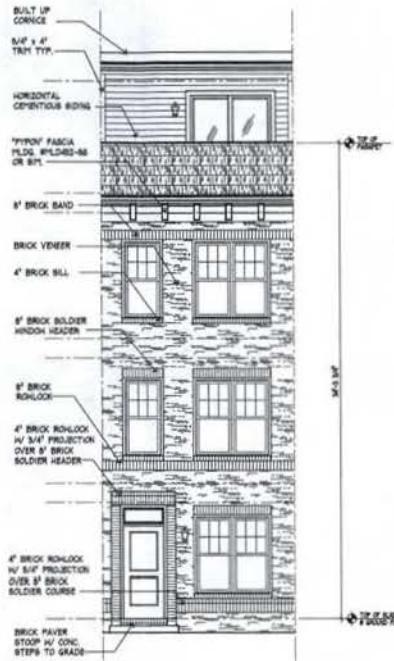
EYA.146a.00



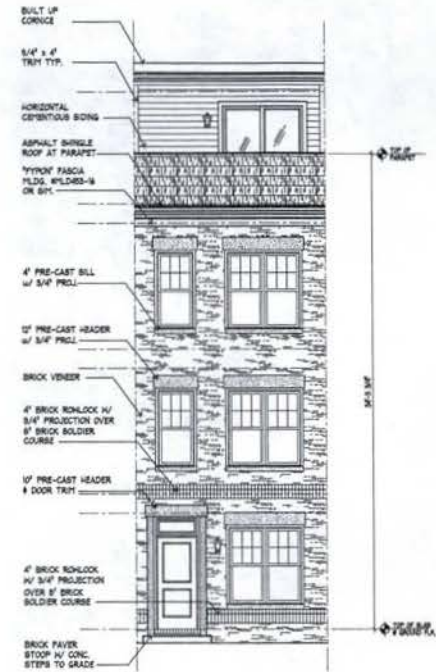
A-EC3



ELEVATION 3



ELEVATION 2



ELEVATION 1

Saint Paul's College
WASHINGTON, D.C.

THE NEIGHBORHOODS OF
EYA

UNIT ELEVATIONS

UNIT TYPE 'A'
April 2, 2008



LESSARD GROUP INC.
8221 Leesburg Pike, Ste. 700
Vienna, VA 22181
P: 703.790.9344
F: 703.765.9328
www.lessardgroup.com



VIKA, INC.
3533 Century Blvd.
Gainesville, VA 22074
P: 703.818.4100
F: 703.818.2262
www.vika.com

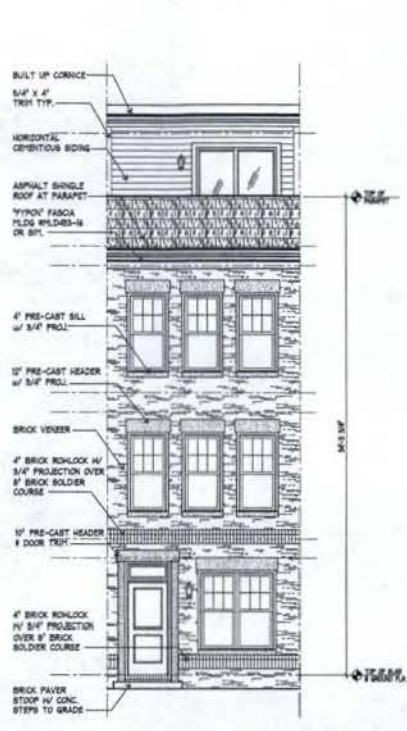


STUDIO 39
6425 Greenbelt Dr. Ste. 300-A
Alexandria, VA 22304
P: 703.719.8700
F: 703.719.8333
www.st39.com

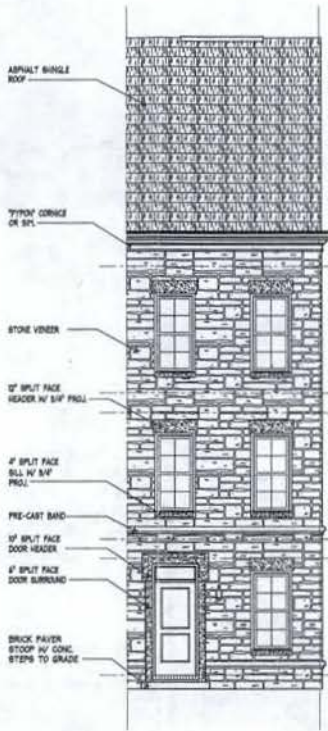
EYA.146a.00

1/4" = 1'-0" EYA146a-200

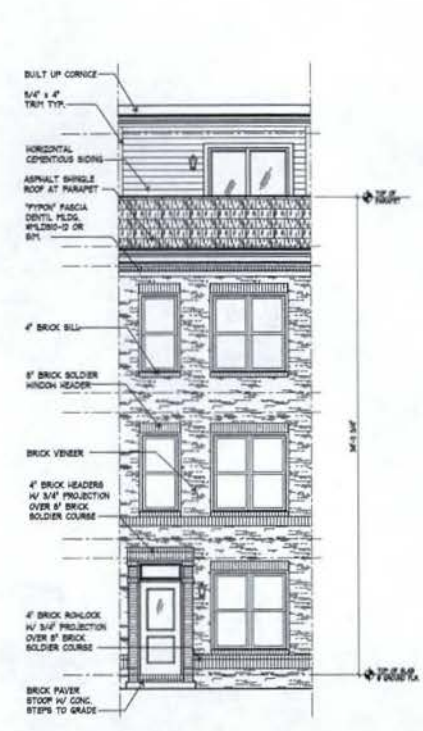
A-200



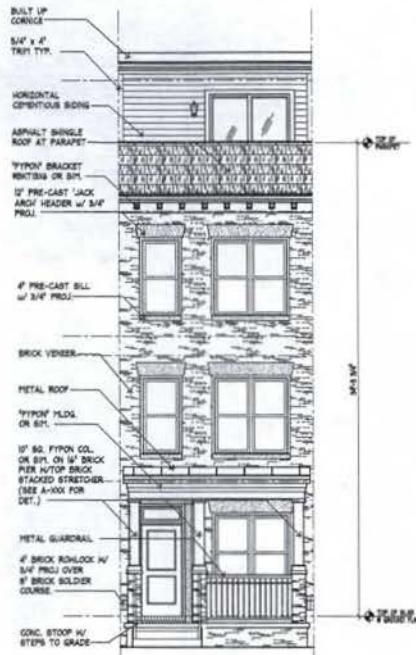
ELEVATION 6



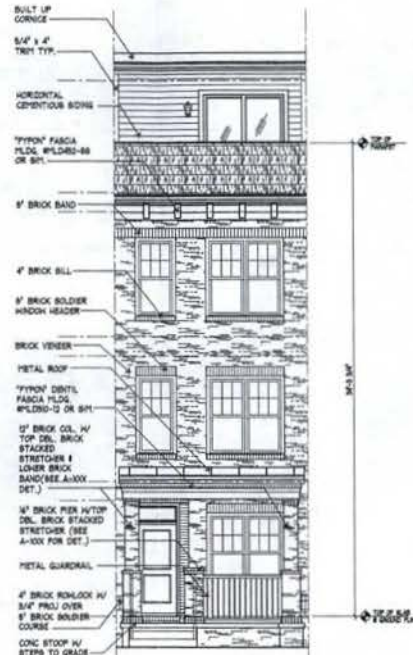
ELEVATION 5



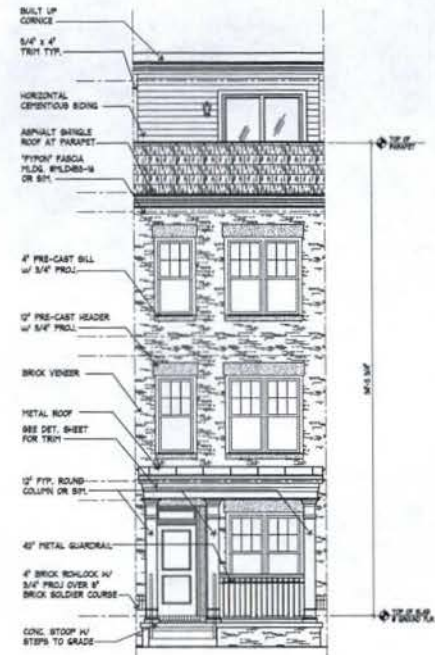
ELEVATION 4



ELEVATION 3a



ELEVATION 2a



ELEVATION 1a

Saint Paul's College
WASHINGTON, D.C.



UNIT ELEVATIONS

UNIT TYPE 'A'
April 2, 2008



LESSARD GROUP INC.
8221 Leesburg Pike, Ste. 700
Vienna, VA 22184
P: 703.792.8244
F: 703.760.8338
www.lessardgroup.com



VIVA, INC.
20261 Century Blvd.
Springfield, MD 20784
P: 703.729.8350
F: 703.724.2282
www.viva.com

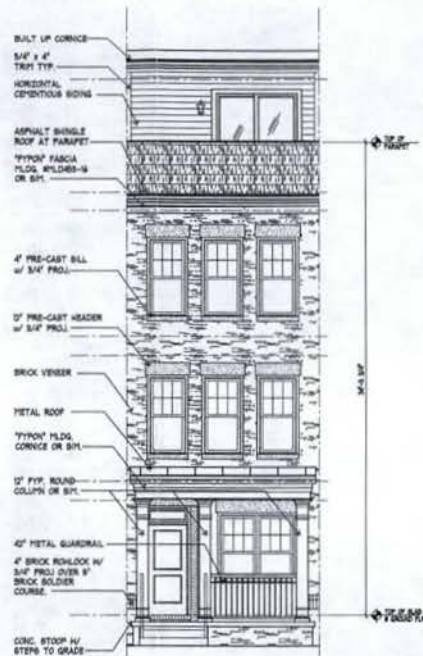


STUDIO 39
8416 Greenleaf Dr. DM. 100-A
Alexandria, VA 22308
P: 703.731.8350
F: 703.731.6551
www.studio39.com

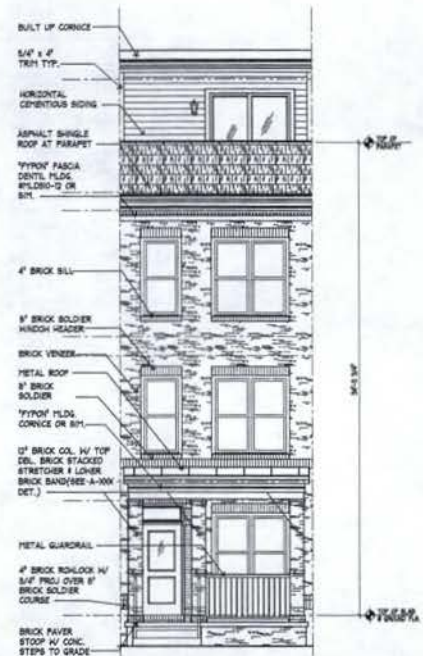
EVA.146a.00



A-202



ELEVATION 6a



ELEVATION 4a

Saint Paul's College
WASHINGTON, D.C.



UNIT ELEVATIONS

UNIT TYPE 'A'
April 2, 2008



LESSARD GROUP INC.
8321 Leesburg Pike, Ste. 700
Vienna, VA 22134
P: 703.760.3344
F: 703.760.8338
www.lessardgroup.com



VIKI INC.
20251 Century Blvd
Greenbelt, MD 20774
P: 301.516.4300
F: 301.516.5262
www.viki.com



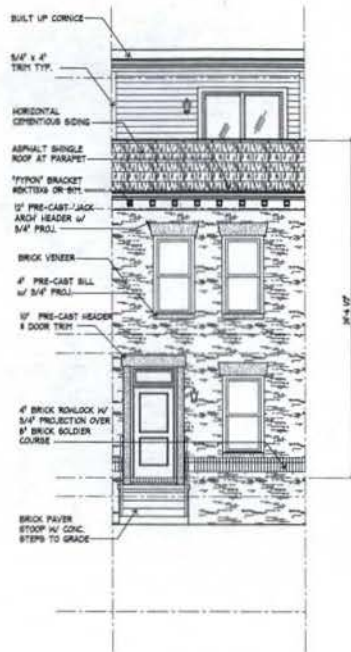
STUDIO 39
4616 Greenbelt Dr., Ste. 100 A
Arlington, VA 22208
P: 703.719.6500
F: 703.719.6503
www.studio39.com

EVA. 146a.00

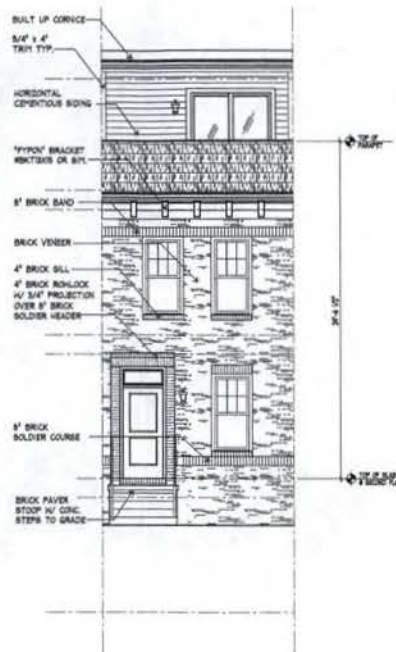
1/4" = 1'-0"

EVA146a-203

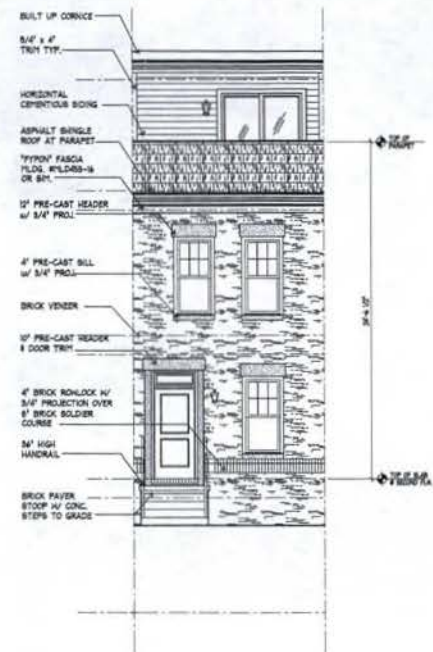
A-203



ELEVATION 3b



ELEVATION 2b



ELEVATION 1b

Saint Paul's College
WASHINGTON, D.C.



UNIT ELEVATIONS

UNIT TYPE 'A'

April 2, 2008



LESSARD GROUP INC.
9521 Leesburg Pike, Ste. 700
Vienna, VA 22182
P: 703.730.2044
F: 703.730.1336
www.lessardgroup.com



VIKA, INC.
20311 Century Blvd.
Germantown, MD 20874
P: 301.814.4140
F: 301.814.2162
www.vika.com



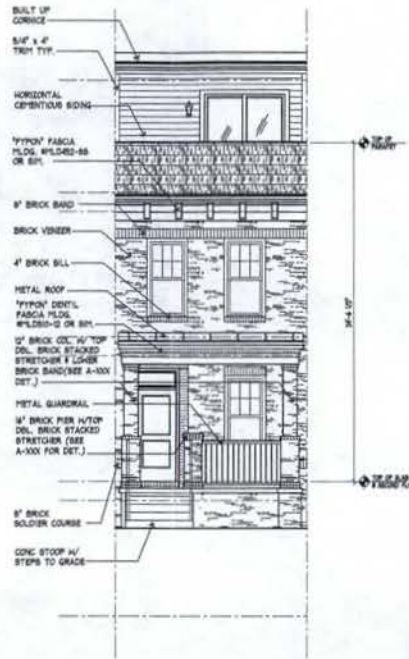
STUDIO 39
6414 Grosvenor Dr., Ste. 100-A
Alexandria, VA 22304
P: 703.712.0500
F: 703.712.0502
www.studio39.com

EYA-146a.00

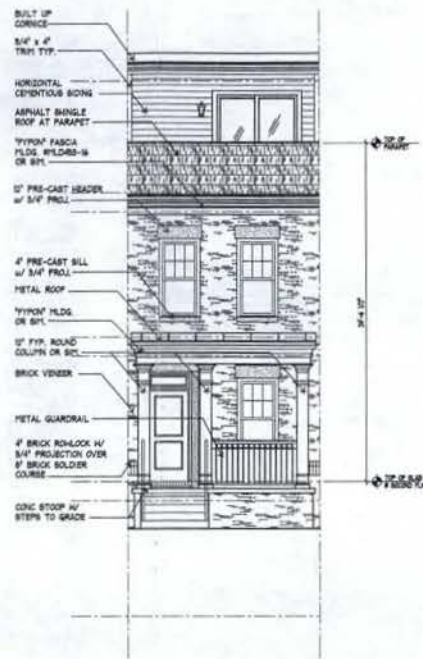
1/4" = 1'-0"

EYA146a-204

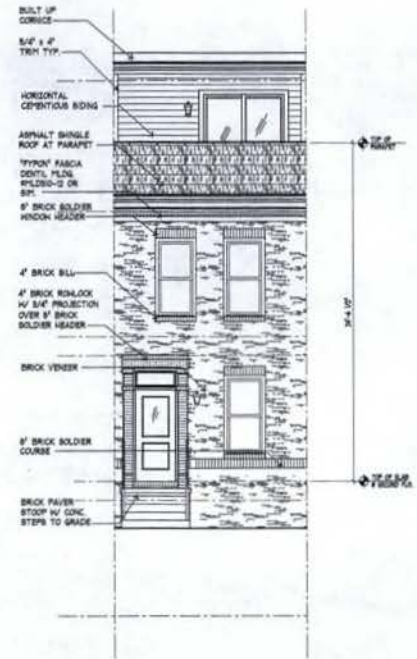
A-204



ELEVATION 2c



ELEVATION 1c



ELEVATION 4b

Saint Paul's College
WASHINGTON, D.C.



UNIT ELEVATIONS

UNIT TYPE 'A'

April 2, 2008



LESSARD GROUP INC.
8321 Lanford Pk. Ste. 200
Vienna, VA 22181
P: 703.780.0344
F: 703.780.5128
www.lessardgroup.com



VIKI, INC.
3021 Century Blvd.
Cameron Station, MD 20614
P: 301.656.6000
F: 301.328.2382
www.viki.com

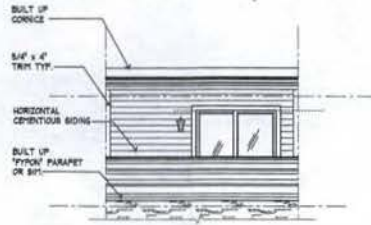


STUDIO 39
6416 Greenbush Cr. Ste. 100-A
Alexandria, VA 22310
P: 703.734.6000
F: 703.734.6092
www.studio39.com

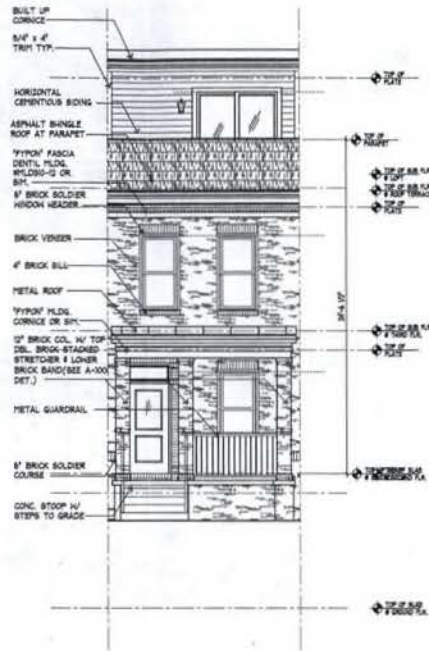
EYA.146a.00



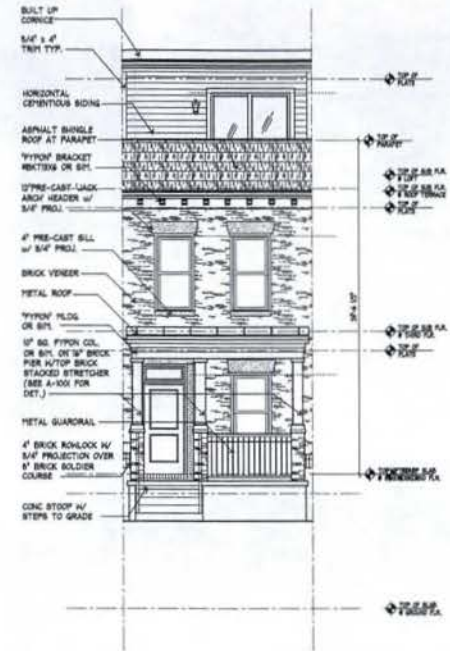
A-205



ALT. PARAPET ON ELEVATIONS 1 - 4 & 6



ELEVATION 4c



ELEVATION 3c

Saint Paul's College
WASHINGTON, D.C.



UNIT ELEVATIONS

UNIT TYPE 'A'
April 2, 2008



LESSARD GROUP INC.
8321 Leesburg Pike, Ste. 710
Vienna, VA 22182
P: 703.760.8344
F: 703.760.8328
www.lgic.com



VTKA, INC.
2031 Century Blvd.
Chesapeake, VA 23030
P: 703.518.4100
F: 703.518.2262
www.vtk.com

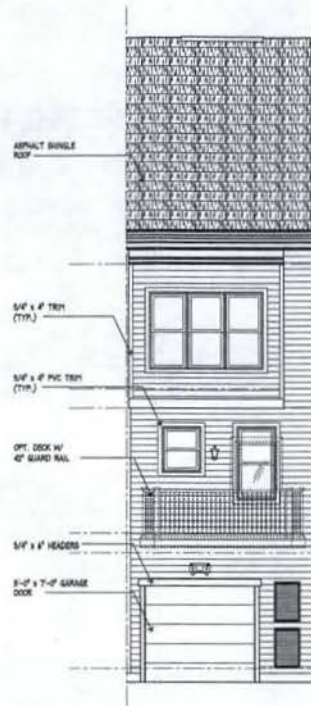


STUDIO 39
4118 Greenleaf Dr. Ste. 100-A
Alexandria, VA 22304
P: 703.718.6500
F: 703.718.6503
www.studio39.com

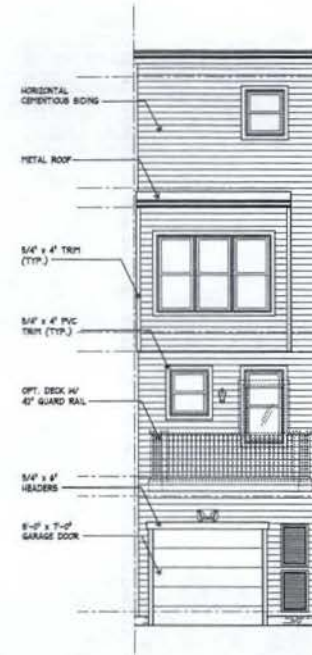
EYA.146a.00



1/4" = 1'-0" EYA146a-006



ELEVATION 5



ELEVATION 1 - 4 & 6

Saint Paul's College
WASHINGTON, D.C.



UNIT ELEVATIONS

UNIT TYPE 'A'
April 2, 2008



LESSARD GROUP INC.
8231 Leesburg Pike, Ste. 700
Manassas, VA 22188
P: 703.798.8244
F: 703.798.8328
www.lessardgroup.com



VIKA INC.
20351 Century Blvd.
Germantown, MD 20874
P: 301.818.4100
F: 301.818.2382
www.vika.com

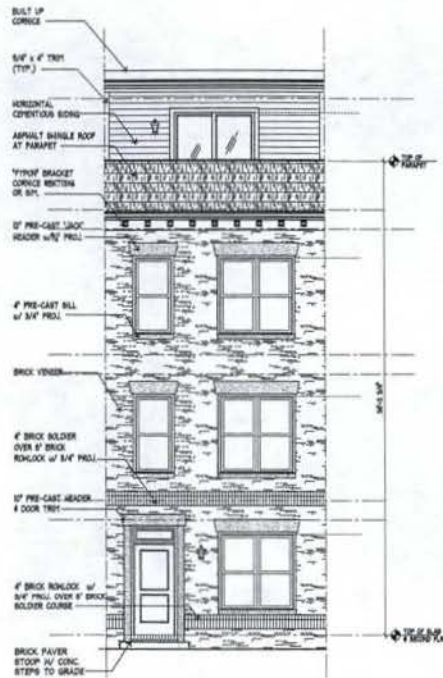


STUDIO 39
6418 Greenbush Cr., Ste. 100 A
Arlington, VA 22219
P: 703.719.8300
F: 703.719.8323
www.studio39.com

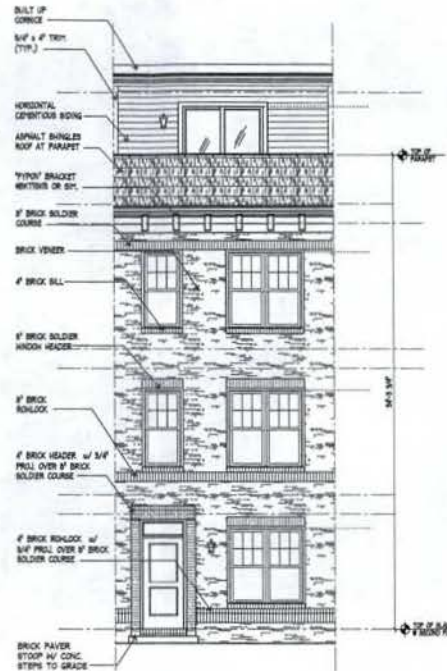
EYA.146a.00



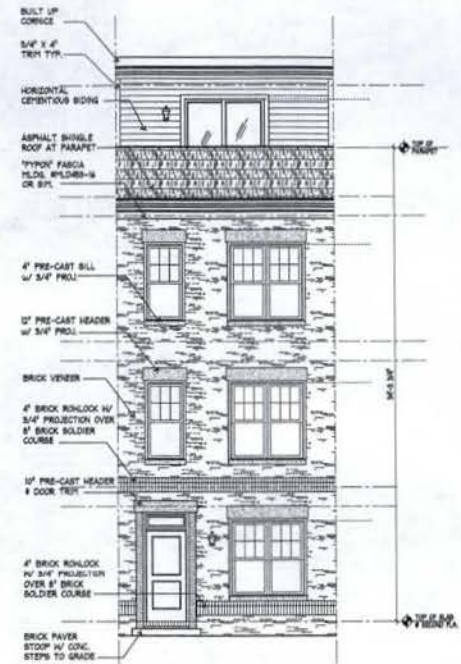
A-207



ELEVATION 3



ELEVATION 2



ELEVATION 1

Saint Paul's College
WASHINGTON, D.C.

THE NEIGHBORHOODS OF
EYA

UNIT ELEVATIONS

UNIT TYPE 'B'

April 2, 2008



LESSARD GROUP INC.
6333 Leesburg Pike, Ste. 700
Vienna, VA 22184
P: 703.789.5144
F: 703.789.4938
www.lessardgroup.com



VIKA, INC.
2925 Century Blvd.
Germantown, MD 20874
P: 301.944.4100
F: 301.684.2262
www.vika.com

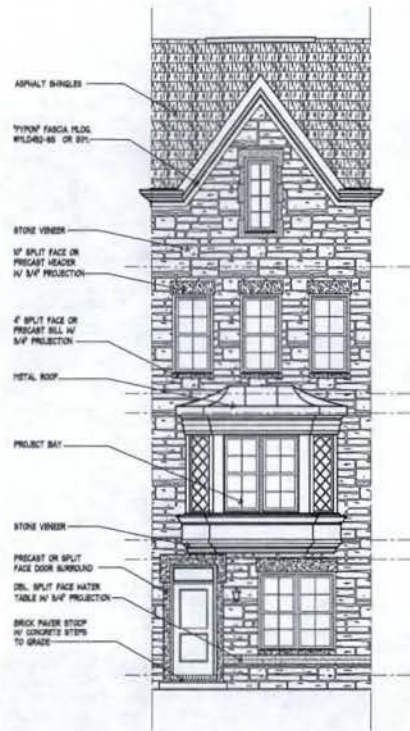


STUDIO 39
8433 Grandview Dr., Ste. 100-A
Alexandria, VA 22310
P: 703.749.6500
F: 703.749.6501
www.studio39.com

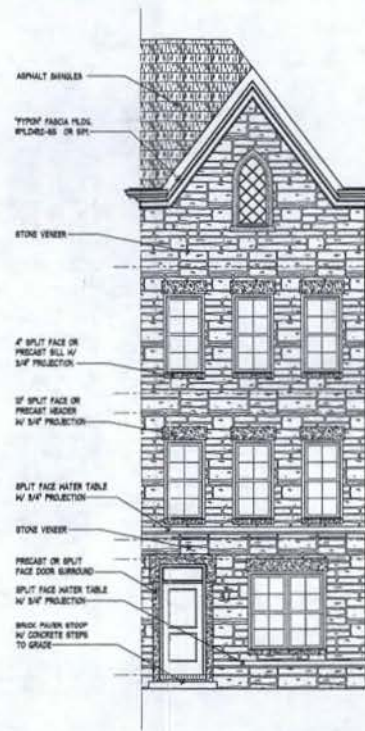
EYA-146a.00

1/4" = 1'-0" EYA146a-210

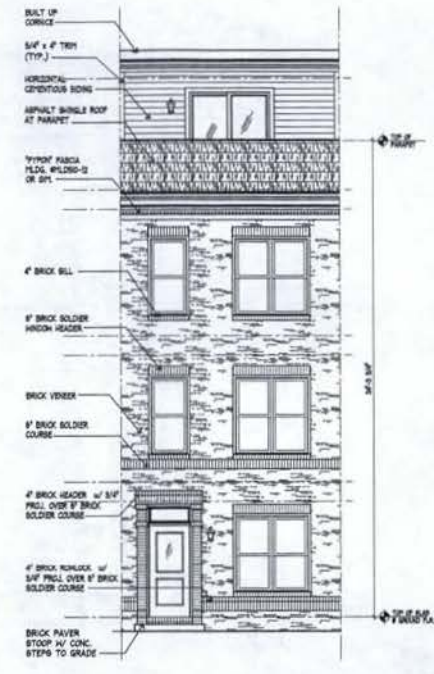
A-210



ELEVATION 5



ELEVATION 5



ELEVATION 4

Saint Paul's College
WASHINGTON, D.C.

THE NEIGHBORHOODS OF
EYA

UNIT TYPE 'B'
FRONT ELEVATIONS

April 2, 2008



LESSARD GROUP INC.
8521 Greenway Plaza, Ste. 700
Houston, TX 77041
P: 713.780.3344
F: 713.780.8100
www.lessardgroup.com



VIKI, INC.
20331 Century Blvd.
Cherry Hill, MD 20714
P: 301.518.4100
F: 301.518.2100
www.viki.com

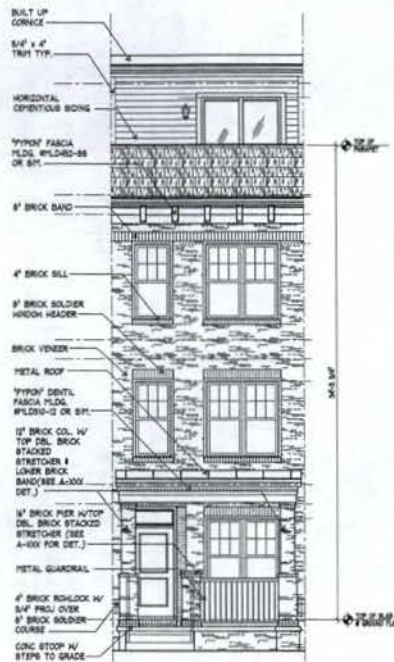


STUDIO 39
6418 Greenway Dr. Ste. 100 A
Arlington, VA 22218
P: 703.719.8900
F: 703.719.8903
www.studio39.com

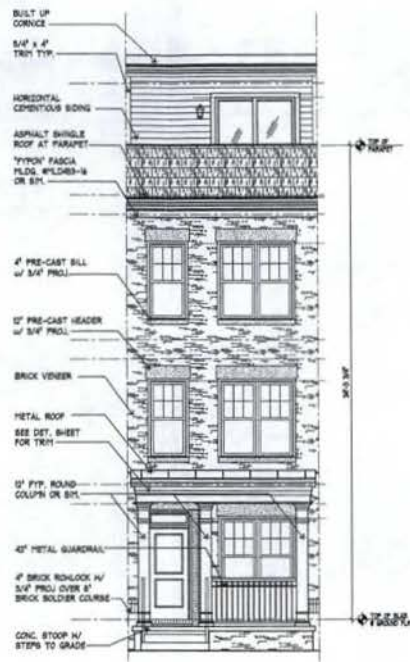
EYA.146a.00

1/4" = 1'-0" EYA146A-211

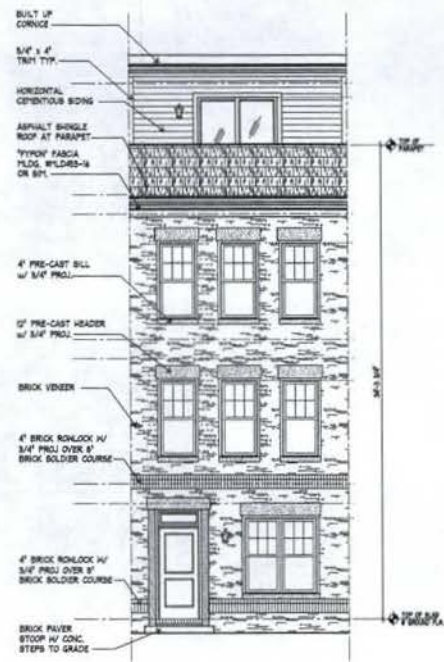
A-211



ELEVATION 2a



ELEVATION 1a



ELEVATION 6

Saint Paul's College
WASHINGTON, D.C.

THE NEIGHBORHOODS OF
EYA

UNIT ELEVATIONS

UNIT TYPE 'B'

April 2, 2008



LESSARD GROUP INC.
8522 Leesbury Pike, Ste. 700
Vienna, VA 22184
P: 703.760.5244
F: 703.760.5538
www.lessardgroup.com



VIFA, INC.
3021 Century Blvd.
Germantown, MD 20874
P: 301.814.4100
F: 301.814.1262
www.vifa.com



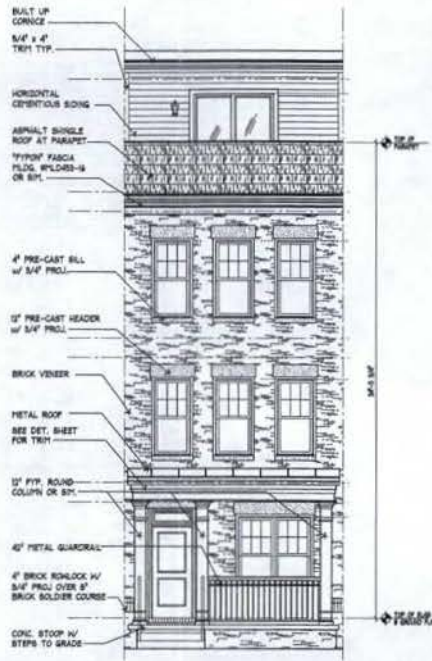
STUDIO 39
3416 Greenleaf Dr., Ste. 100-A
Alexandria, VA 22304
P: 703.731.8000
F: 703.731.8003
www.studio39.com

EYA.146a.00

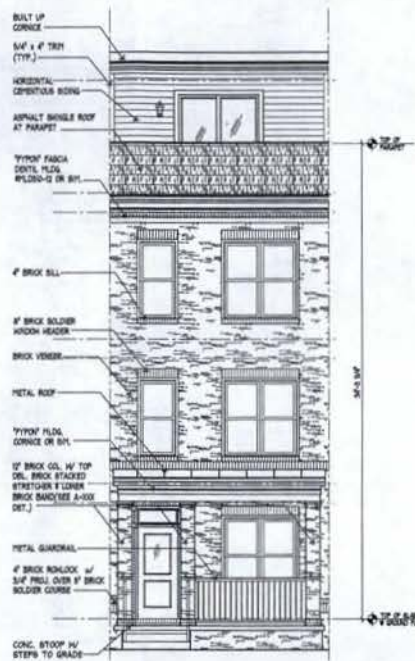


1/4" = 1'-0" EYA146a-212

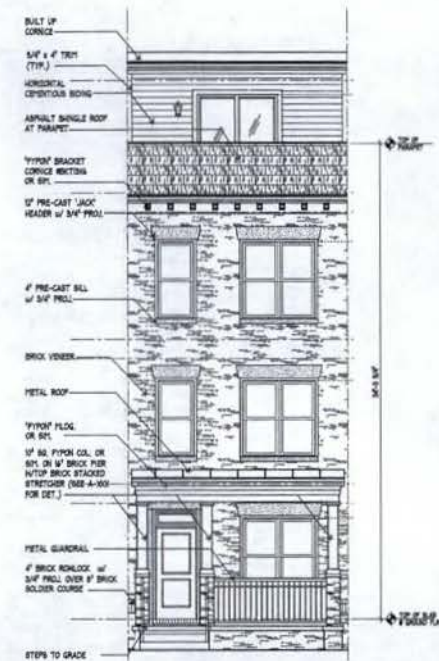
A-212



ELEVATION 6a



ELEVATION 4a



ELEVATION 3a

Saint Paul's College
WASHINGTON, D.C.

THE NEIGHBORHOODS OF
EYA

UNIT ELEVATIONS

UNIT TYPE 'B'
April 2, 2008



LESSARD GROUP INC.
8031 Leesburg Pike, Ste. 700
Vienna, VA 22188
P: 703.760.8944
F: 703.760.8328
www.lessardgroup.com



VIKI, INC.
20211 Century Blvd
Chantilly, VA 20151
P: 703.818.4000
F: 703.818.2282
www.viki.com

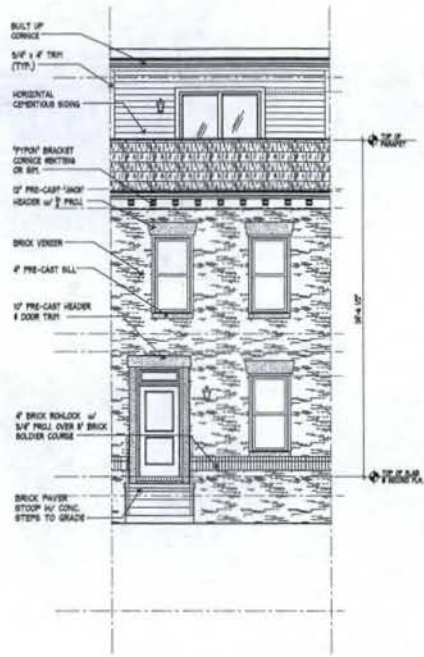


STUDIO 39
6418 Greenway Dr., Ste. 100-A
Arlington, VA 22204
P: 703.718.8000
F: 703.718.8800
www.studio39.com

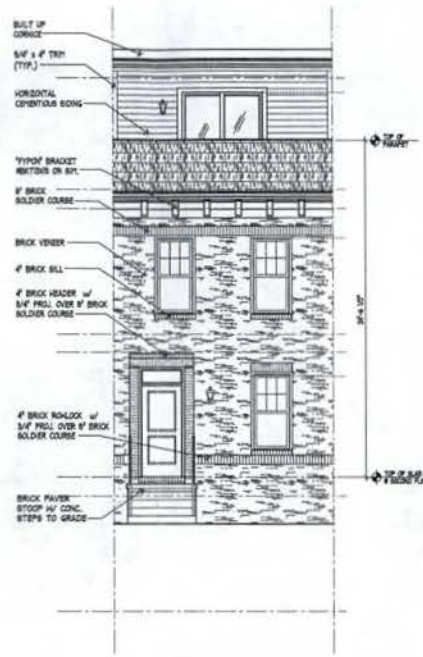
EYA.146a.00

1/4"=1'-0"
EVA146a-213

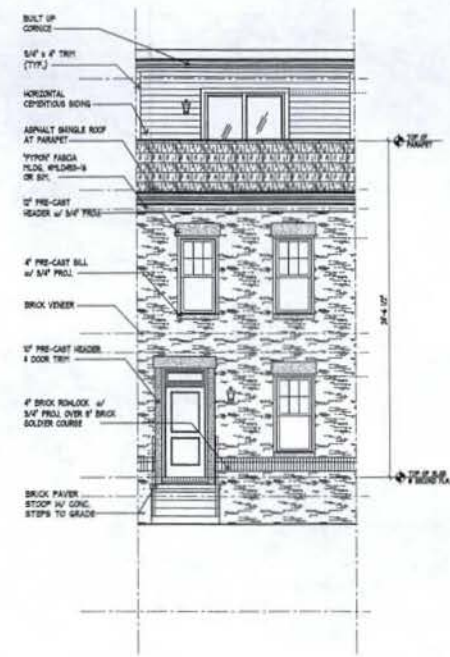
A-213



ELEVATION 3b



ELEVATION 2b



ELEVATION 1b

Saint Paul's College
WASHINGTON, D.C.

THE NEIGHBORHOODS OF
EYA

UNIT ELEVATIONS

UNIT TYPE 'B'
April 2, 2008



LESSARD GROUP INC.
8521 Leesburg Pike, Ste. 705
Vienna, VA 22184
P: 703.769.9244
F: 703.769.9228
www.lessardgroup.com



VTKA, INC.
2021 Century Blvd.
Chantilly, VA 20151
P: 703.814.4100
F: 703.814.2242
www.vtka.com

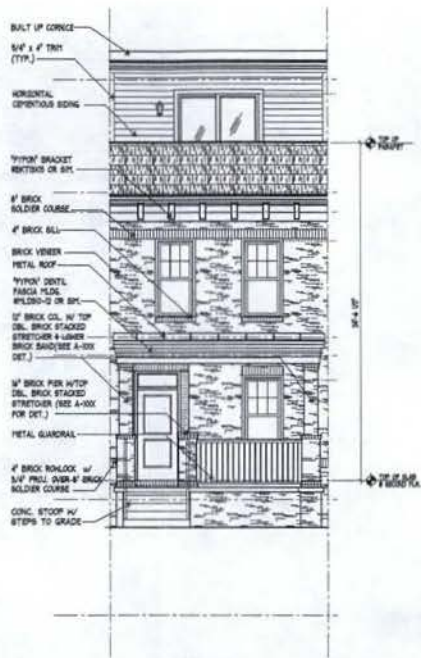


STUDIO 39
8410 Greenbush Dr., Ste. 100-A
Alexandria, VA 22310
P: 703.718.6500
F: 703.718.6503
www.studio39.com

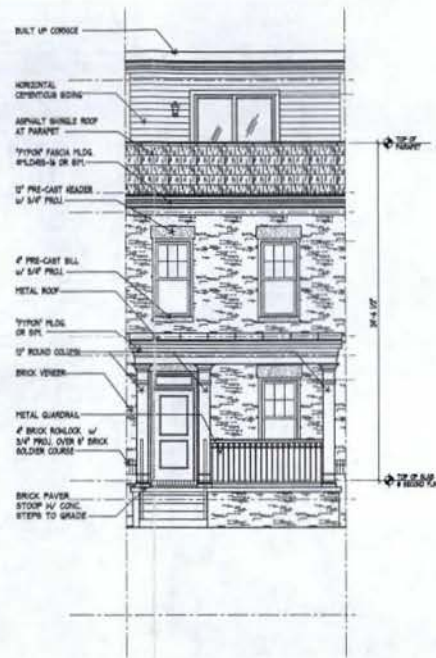
EYA-146a.00



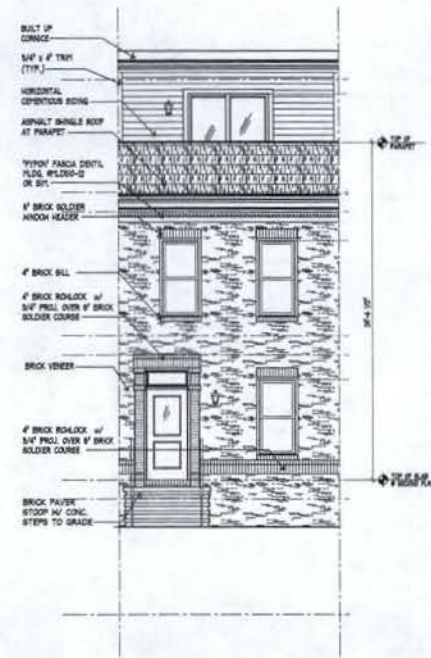
A-214



ELEVATION 2c



ELEVATION 1c



ELEVATION 4b

Saint Paul's College
WASHINGTON, D.C.



UNIT ELEVATIONS

UNIT TYPE 'B'

April 7, 2008



LESSARD GROUP INC.
8221 Lombard Pike, Ste 700
Vienna, VA 22183
P: 703.760.8944
F: 703.760.9335
www.lessardgroup.com



VIKA, INC.
2025 Century Blvd.
Germantown, MD 20874
P: 301.264.4200
F: 301.264.2262
www.vika.com



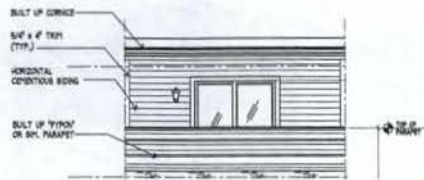
STUDIO 39
5415 Greenbelt Dr., Ste. 100 A
Alexandria, VA 22310
P: 703.718.8990
F: 703.718.6021
www.studio39.com

EYA 146a.00

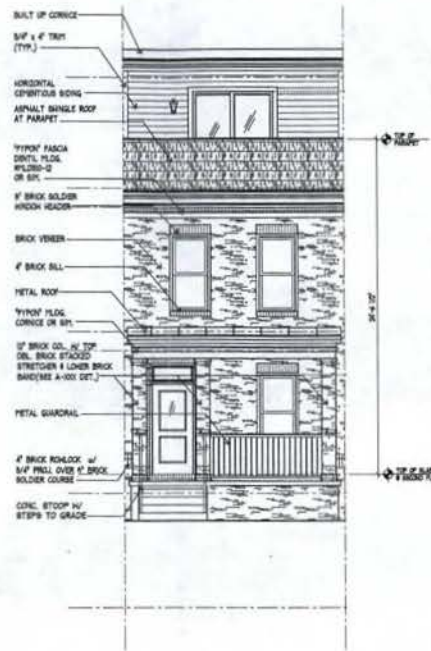


1/4" = 1'-0" EYA146a-213

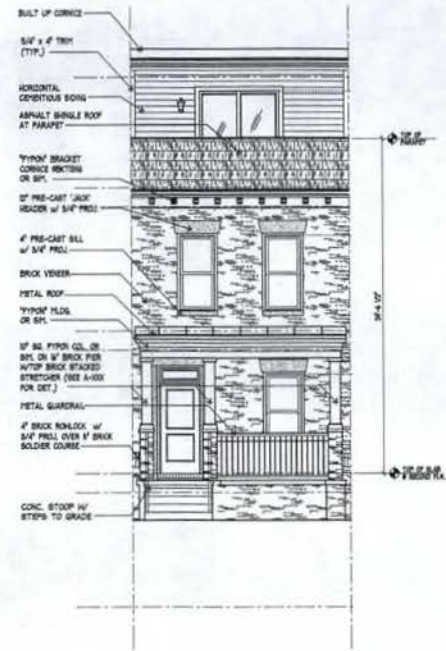
A-215



ALT. PARAPET ON ELEVATIONS 1 - 4 & 6



ELEVATION 4c



ELEVATION 3c

Saint Paul's College
WASHINGTON, D.C.

THE NEIGHBORHOODS OF
EYA

UNIT ELEVATIONS

UNIT TYPE 'B'
April 2, 2008



LESSARD GROUP INC.
8521 Landburg Pike, Ste. 300
Vienna, VA 22180
P: 703.760.8094
F: 703.760.8128
www.lessardgroup.com



VIKA, INC.
3021 Century Blvd
Germantown, MD 20874
P: 301.844.4100
P: 301.844.2342
www.vika.com

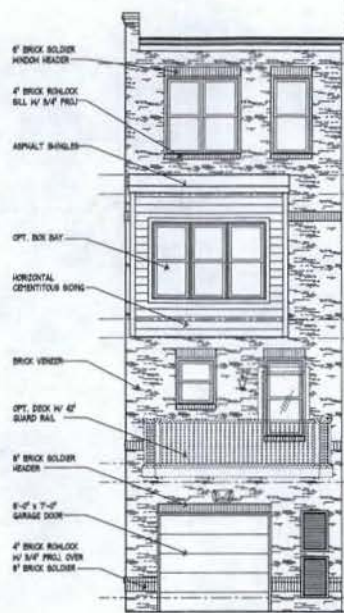


STUDIO 39
8416 Greenbelt Dr. Ste. 100-A
Alexandria, VA 22310
P: 703.718.6522
F: 703.719.6521
www.studio39.com

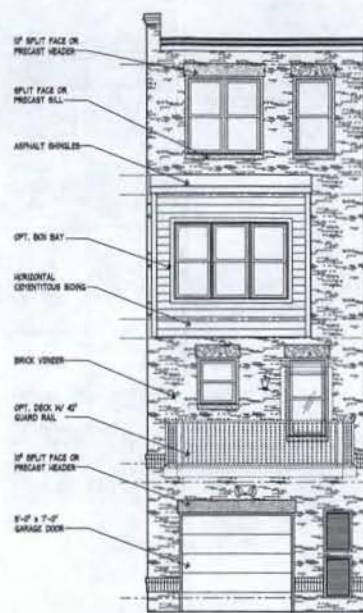
EYA.146a.00



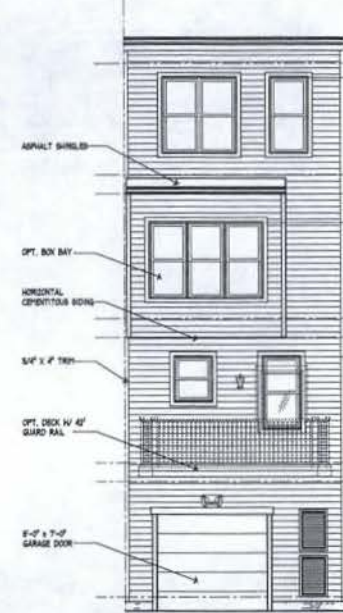
A-216



ELEVATION 2 & 4



ELEVATION 1 & 6



ELEVATION 1-4

Saint Paul's College
WASHINGTON, D.C.

THE NEIGHBORHOODS OF
EYA

UNIT ELEVATIONS

UNIT TYPE 'B'
April 2, 2008



LESSARD GROUP INC.
8321 Leesburg Pike, Ste. 700
Vienna, VA 22184
P: 703.790.0144
F: 703.790.8328
www.lessardgroup.com



VIKA INC.
2021 Century Blvd.
Glenmont, MD 20874
P: 301.816.4100
P: 301.816.2162
www.vika.com

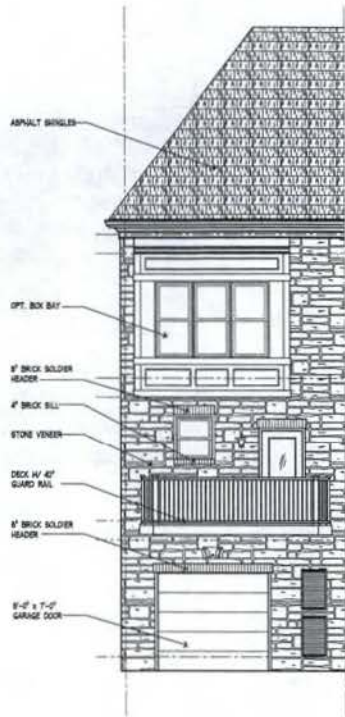


STUDIO 39
4111 Greenbelt Dr., Ste. 100-A
Arlington, VA 22210
P: 703.719.6500
F: 703.719.6503
www.studio39.com

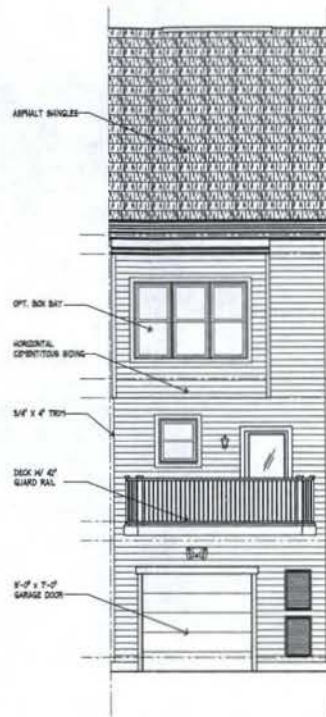
EYA.146a.00

1/4" = 1'-0" EYA146a-217

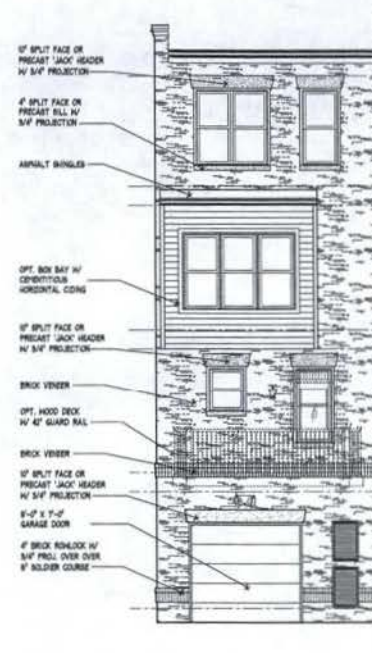
A-217



ELEVATION 5

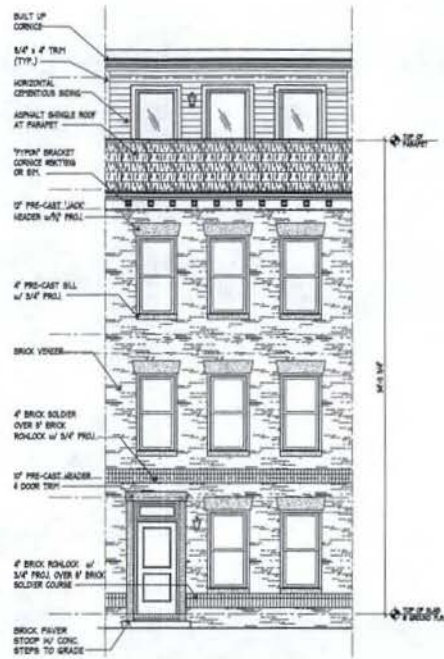


ELEVATION 5

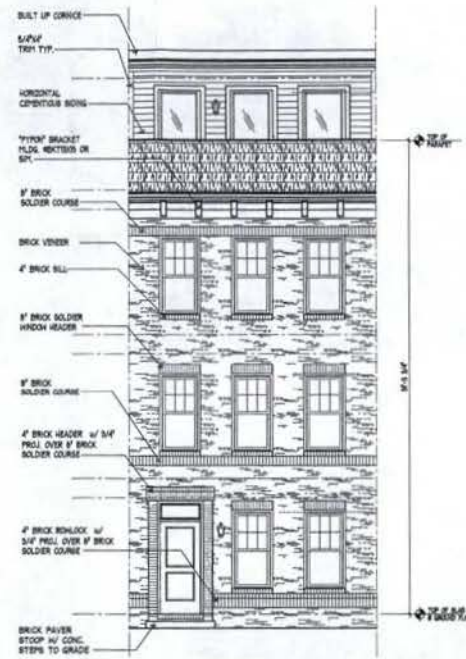


ELEVATION 3

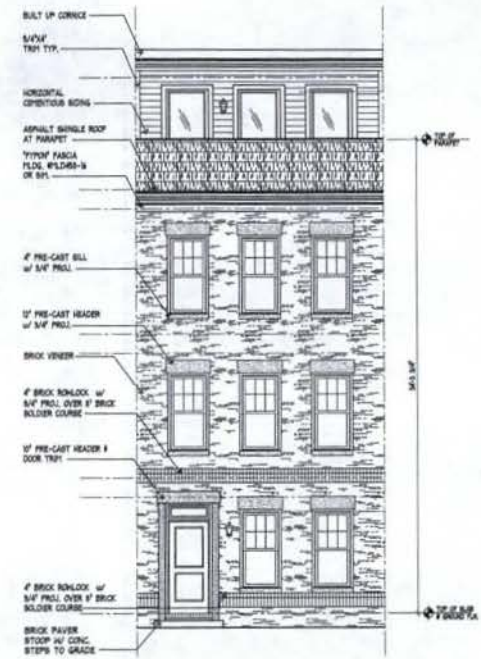




ELEVATION 3



ELEVATION 2



ELEVATION 1

Saint Paul's College
WASHINGTON, D.C.



UNIT ELEVATIONS

UNIT TYPE 'C'

April 2, 2008



LESSARD GROUP INC.
8511 Leesburg Pike, Ste. 705
Vienna, VA 22182
P: 703.760.8244
F: 703.760.8245
www.lessardgroup.com



VIKI INC.
2031 Century Blvd.
Chesapeake, MD 20524
P: 301.616.4120
F: 301.364.2262
www.viki.com



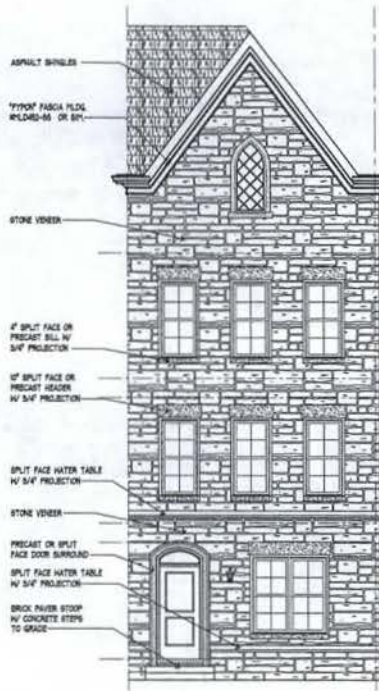
STUDIO 39
8416 Dominion Dr., Ste. 100 A
Manassas, VA 20108
P: 703.719.8900
F: 703.719.8903
www.studio39.com

EYA.146a.00

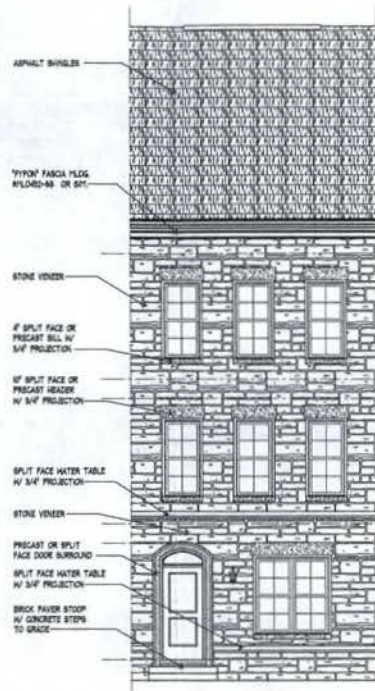


1/4" = 1'-0" EYA146a-210

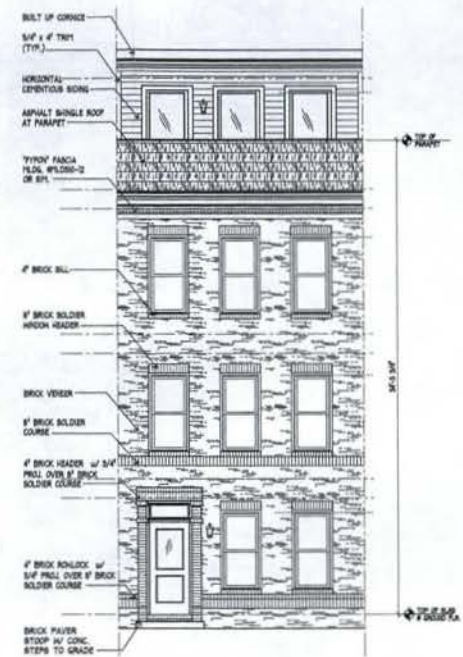
A-220



ELEVATION 5



ELEVATION 5



ELEVATION 4

Saint Paul's College
WASHINGTON, D.C.

THE NEIGHBORHOODS OF
EYA

UNIT ELEVATIONS

UNIT TYPE 'C'
April 2, 2008



LESSARD GROUP INC.
8311 Leesburg Pike, Ste. 705
Vienna, VA 22181
P: 703.760.8244
F: 703.760.8238
www.lessardgroup.com



VIFA, INC.
2021 Century Blvd.
Dermott, MO 20974
P: 202.824.4500
F: 202.848.2282
www.vifa.com

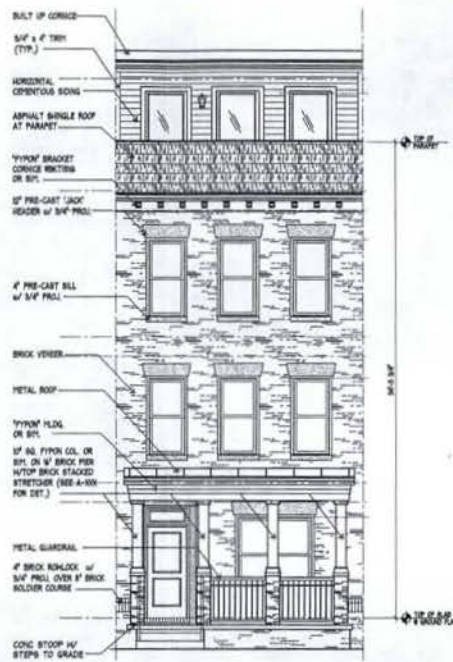


STUDIO 39
8415 Greenleaf Dr. Ste. 100-A
Alexandria, VA 22304
P: 703.718.6588
F: 703.718.6583
www.studio39.com

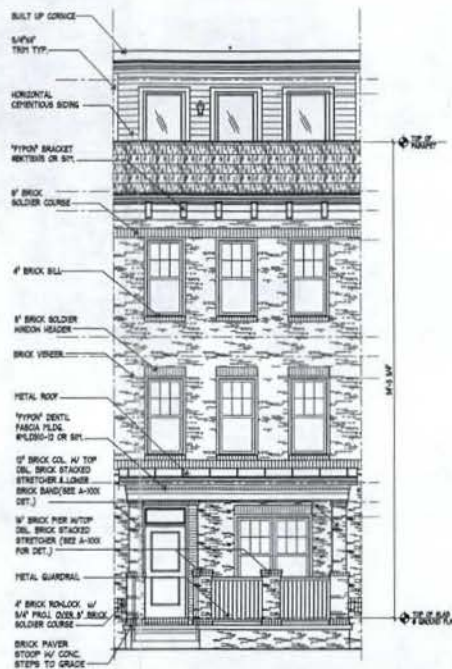
EYA.146a.00



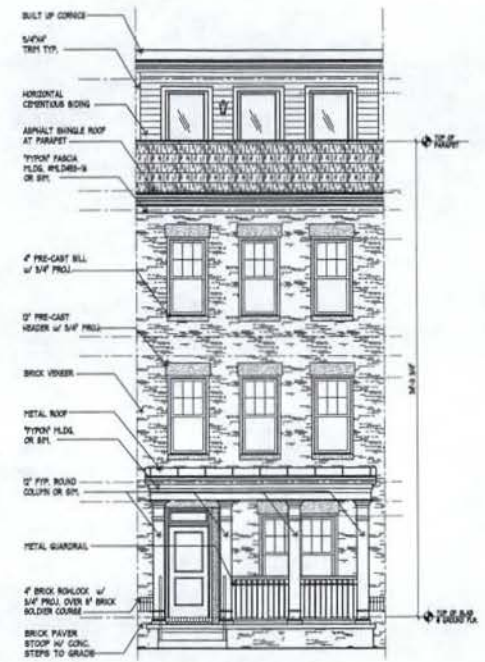
A-221



ELEVATION 3a



ELEVATION 2a



ELEVATION 1a

Saint Paul's College
WASHINGTON, D.C.



UNIT ELEVATIONS

UNIT TYPE 'C'

April 2, 2008



LESSARD GROUP INC.
8231 Leesboro Pike, Ste. 700
Vienna, VA 22181
P: 703.760.9344
F: 703.760.9338
www.lessardgroup.com



VIKI, INC.
2015 Century Blvd.
Dumfriesshire, VA 22024
P: 703.516.4100
F: 703.516.2282
www.viki.com

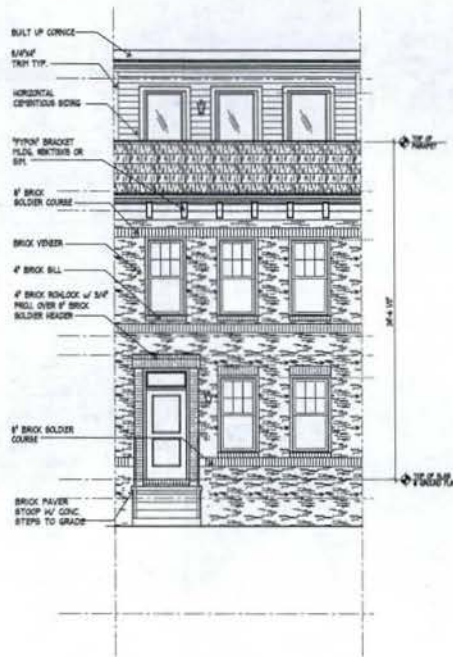


STUDIO 39
6415 Souders Dr., Ste. 100-A
Alexandria, VA 22310
P: 703.778.6000
F: 703.778.6003
www.studio39.com

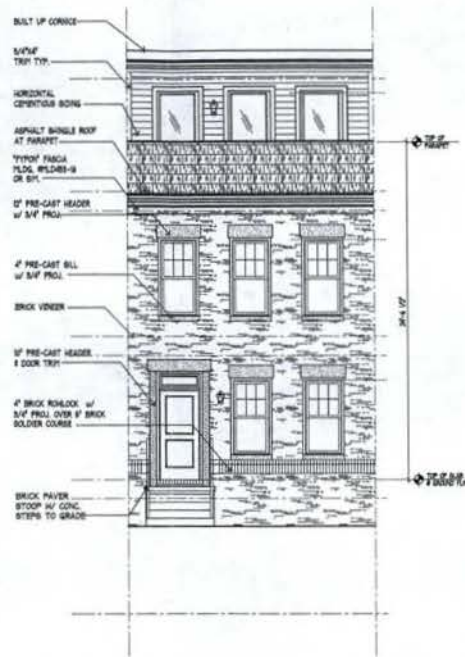
EYA.146a.00

1/4"=1'-0"
EYA146A-222

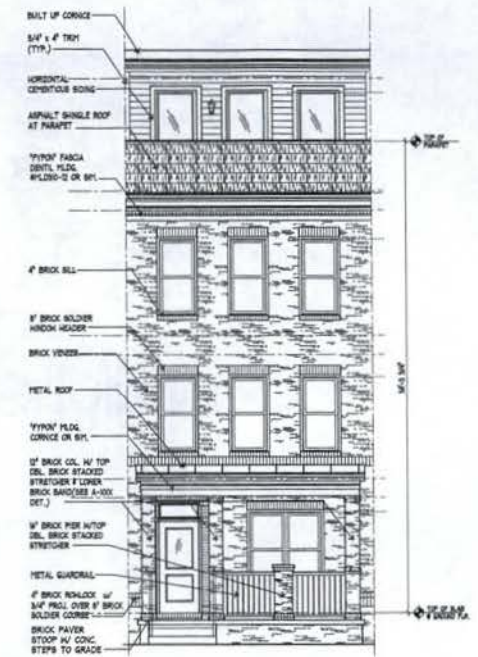
A-222



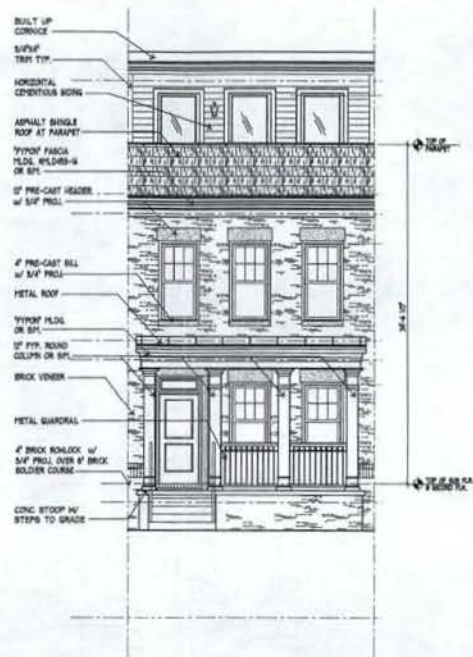
ELEVATION 2b



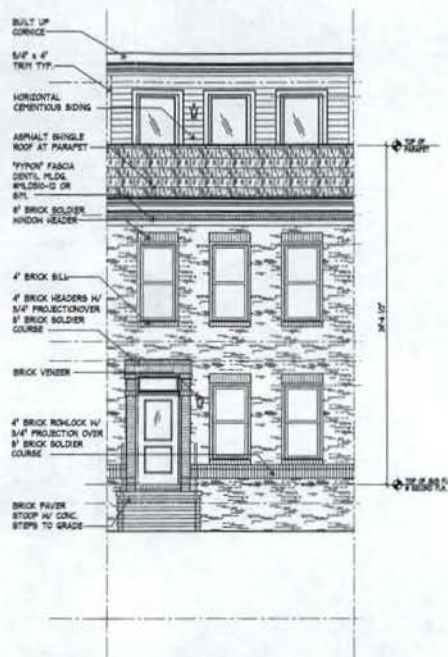
ELEVATION 1b



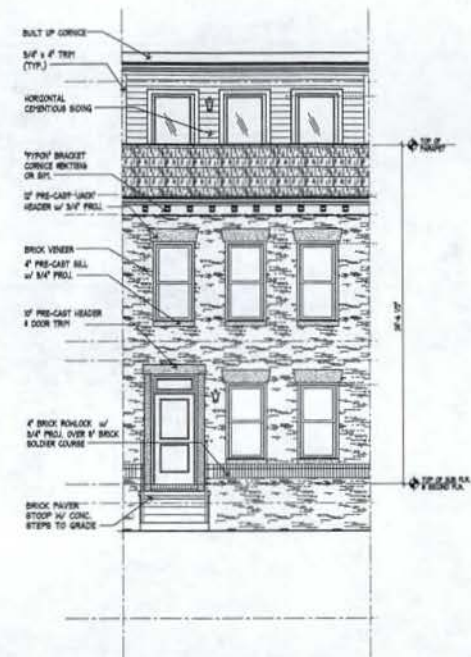
ELEVATION 4a



ELEVATION 1c



ELEVATION 4b



ELEVATION 3b

Saint Paul's College
WASHINGTON, D.C.



UNIT ELEVATIONS

UNIT TYPE 'C'
April 2, 2008



LENSARD GROUP INC.
8331 Leesburg Pike, Ste. 700
Vienna, VA 22188
P. 703.760.9344
F. 703.760.9348
www.lensardgroup.com



VIKI INC.
20221 Century Blvd.
Gainesville, VA 22034
P. 703.515.4300
F. 703.515.2242
www.viki.com

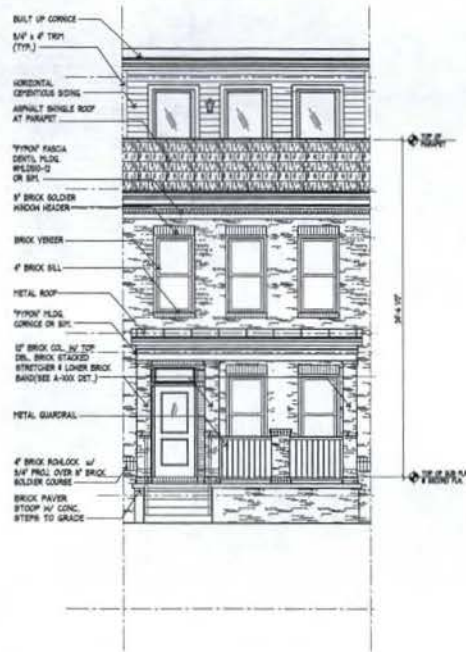


STUDIO 39
6415 Overlook Dr., Ste. 100-A
Arlington, VA 22209
P. 703.719.4500
F. 703.719.8522
www.studio39.com

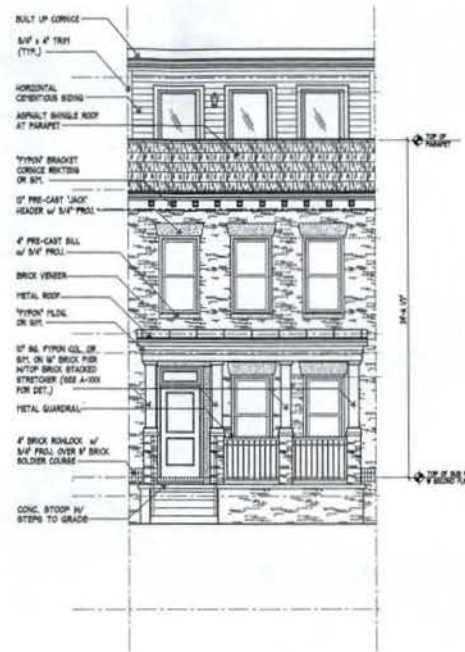
EYA.146a.00



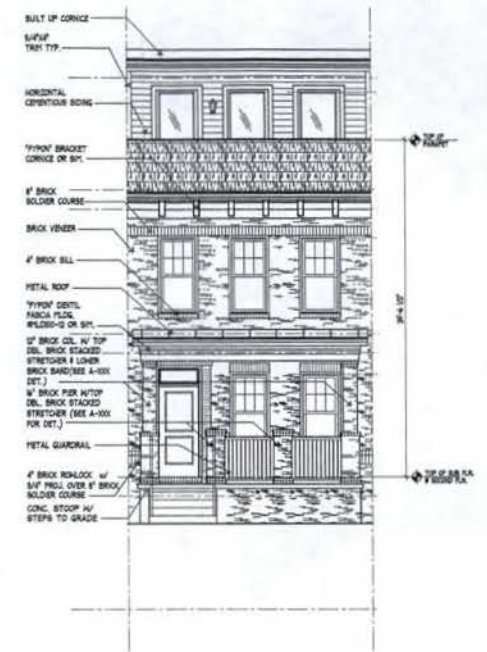
A-224



ELEVATION 4c



ELEVATION 3c



ELEVATION 2c

Saint Paul's College
WASHINGTON, D.C.

THE NEIGHBORHOODS OF
EYA

UNIT ELEVATIONS

UNIT TYPE 'C'
April 2, 2008



LESSARD GROUP INC.
821 Leeburg Pk. Ste. 302
Vienna, VA 22181
P: 703.760.8244
F: 703.760.8238
www.lessardgroup.com



VIKI, INC.
2081 Century Blvd.
Glenmont, MD 20874
P: 301.814.4100
F: 301.814.2342
www.viki.com

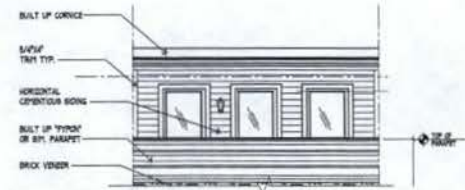


STUDIO 39
8416 Greenleaf Dr. Ste. 100-A
Alexandria, VA 22313
P: 703.578.8200
F: 703.578.8203
www.studio39.com

EYA.146a.00

1/4" = 1'-0"
EYA146a-225

A-225



ALT. PARAPET ON ELEVATIONS 1 - 4

Saint Paul's College
WASHINGTON, D.C.



UNIT ELEVATIONS

UNIT TYPE 'C'
April 2, 2008



LESSARD GROUP INC.
6021 Leesylvania Park, Ste. 700
Vienna, VA 22181
P: 703.760.0344
F: 703.760.0338
www.lessardgroup.com



VIKA, INC.
20111 Century Blvd.
Glenview, MD 20754
P: 301.918.4100
F: 301.914.2382
www.vika.com

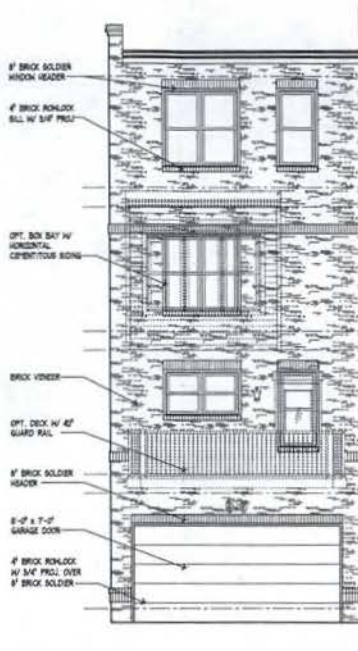


STUDIO 39
8416 Greenbelt Dr., Ste. 100-A
Alexandria, VA 22316
P: 703.718.8500
F: 703.718.8502
www.studio39.com

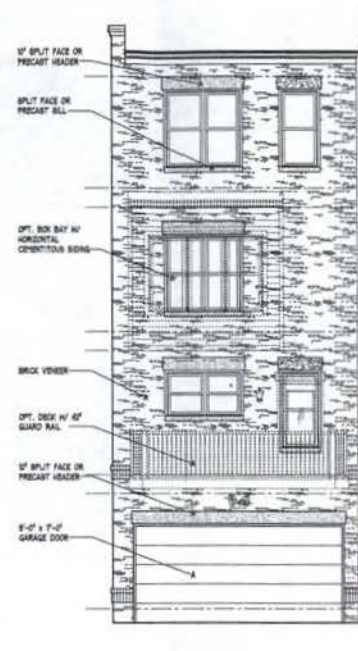
EYA.146a.00



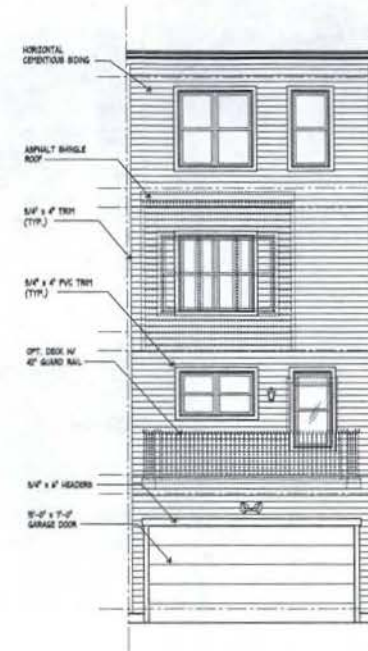
A-226



ELEVATION 2 & 4



ELEVATION 1



ELEVATION 1-4

Saint Paul's College
WASHINGTON, D.C.

THE NEIGHBORHOODS OF
EYA

UNIT ELEVATIONS

UNIT TYPE 'C'

April 2, 2008



LESSARD GROUP INC.
8211 Leesburg Pike, Ste. 701
Vienna, VA 22186
P: 703.760.2044
F: 703.760.3168
www.lessardgroup.com



VIKA, INC.
2071 Century Blvd.
Crownpoint, CO 80224
P: 303.844.4322
F: 303.844.2262
www.vika.com



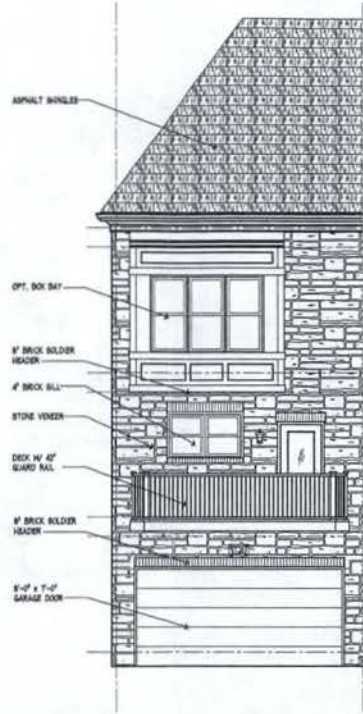
STUDIO 39
6114 Greenbelt Dr., Ste. 100-A
Arlington, VA 22202
P: 703.719.6500
F: 703.719.6503
www.studio39.com

EYA.146a.00

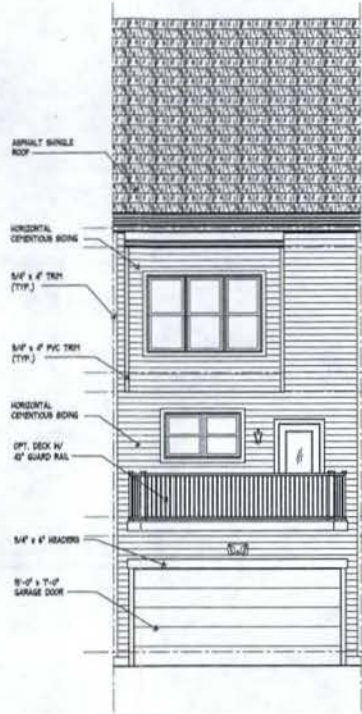
1/4" = 1'-0"

EYA146a-227

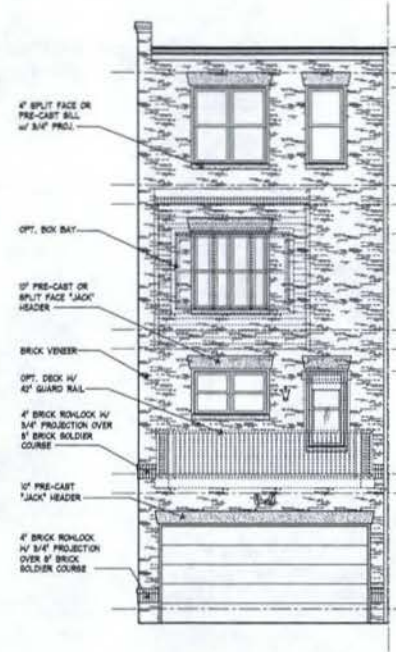
A-227



ELEVATION 5



ELEVATION 5



ELEVATION 3

Saint Paul's College
WASHINGTON, D.C.



UNIT ELEVATIONS

UNIT TYPE 'C'
April 2, 2008



LESSARD GROUP INC.
8321 Leesburg Pike, Ste. 700
Vienna, VA 22182
P. 703.760.8244
F. 703.760.8238
www.lessardgroup.com



VIKI INC.
2031 Century Blvd.
Glenburnie, MD 20624
P. 301.364.4300
F. 301.364.2382
www.viki.com

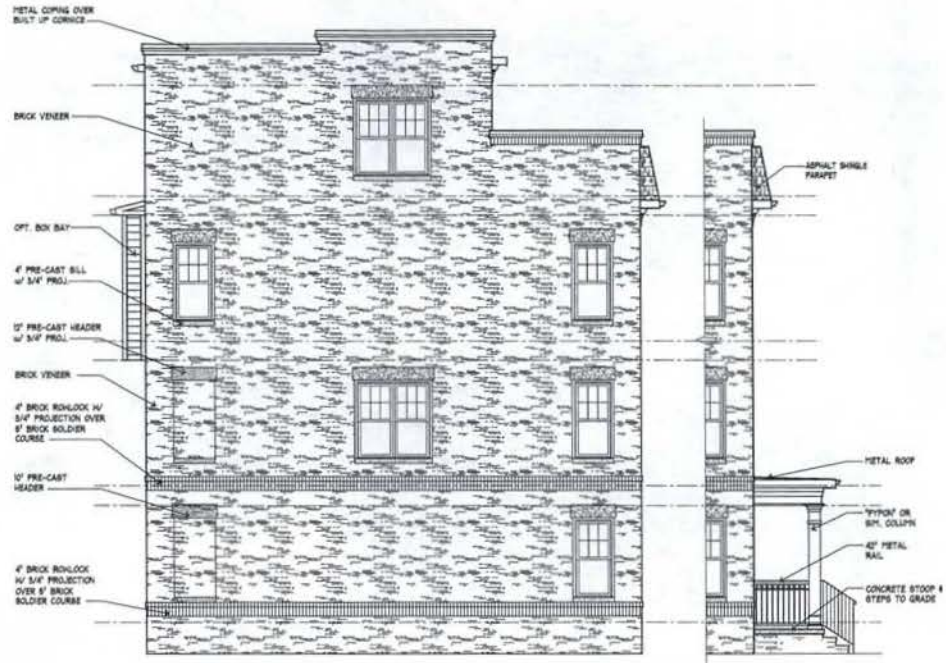


STUDIO 39
8418 Greenbelt Dr. Ste. 100-A
Alexandria, VA 22304
P. 703.724.8300
F. 703.724.8222
www.studio39.com

EYA.146a.00



A-228



ELEVATION 1 & 6

ELEVATION 1a & 6A



ELEVATION 1b

ELEVATION 1c

Saint Paul's College
WASHINGTON, D.C.



UNIT ELEVATIONS

UNIT TYPE 'A - C'

April 2, 2008



LESSARD GROUP INC.
8321 Leesburg Pike, Ste. 700
Vienna, VA 22184
P: 703.760.8244
F: 703.760.8128
www.lessardgroup.com



VIXA, INC.
2051 Century Blvd
Cherrywood, VA 20174
P: 703.814.4240
F: 703.814.2262
www.vixa.com

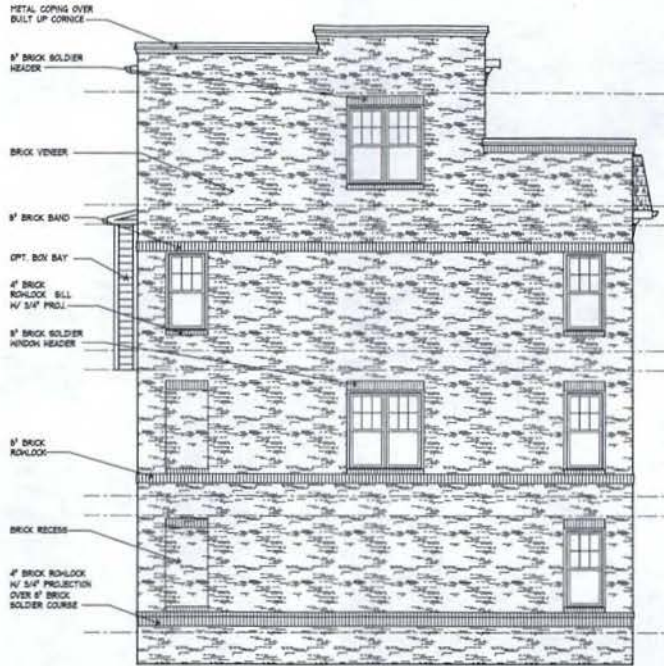


STUDIO 39
8415 Cornerstone Dr., Ste. 100-A
Alexandria, VA 22310
P: 703.719.6800
F: 703.719.6803
www.studio39.com

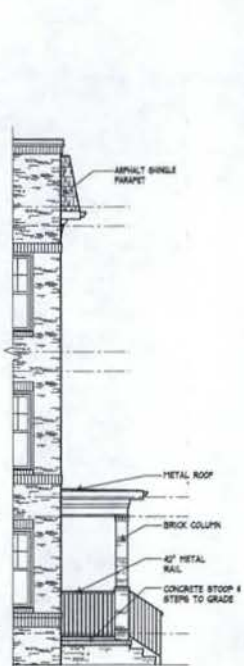
EYA.146a.00



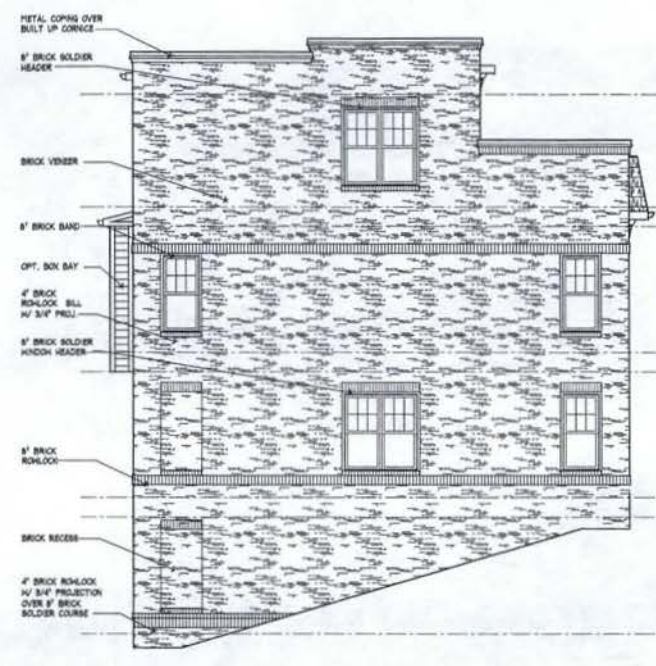
A-230



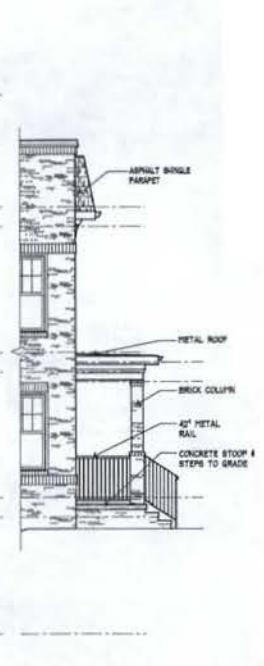
ELEVATION 2



ELEVATION 2a



ELEVATION 2b



ELEVATION 2c

Saint Paul's College
WASHINGTON, D.C.



UNIT ELEVATIONS

UNIT TYPE 'A - C'

April 2, 2008



LESSARD GROUP INC.
8221 Leesburg Pike, Ste. 700
Arling, VA 22202
P: 703.760.9344
F: 703.760.9338
www.lessardgroup.com



VIKI INC.
20251 Century Blvd
Crownsville, MD 21034
P: 301.515.4100
F: 301.515.2582
www.viki.com



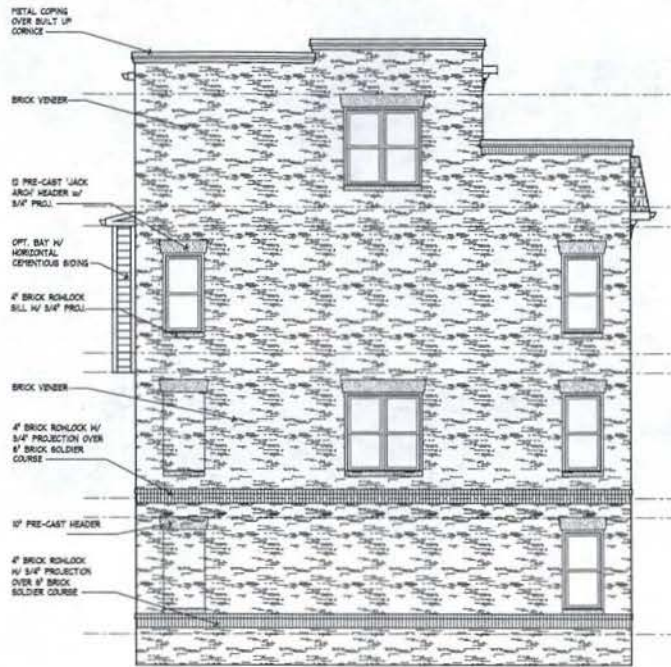
STUDIO 39
9416 Cromwell Dr., Ste. 100-A
Arlington, VA 22218
P: 703.718.4500
F: 703.718.4553
www.st39.com

EYA.146a.00

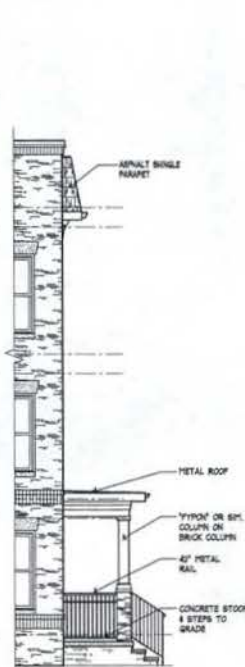


EYA146a-231

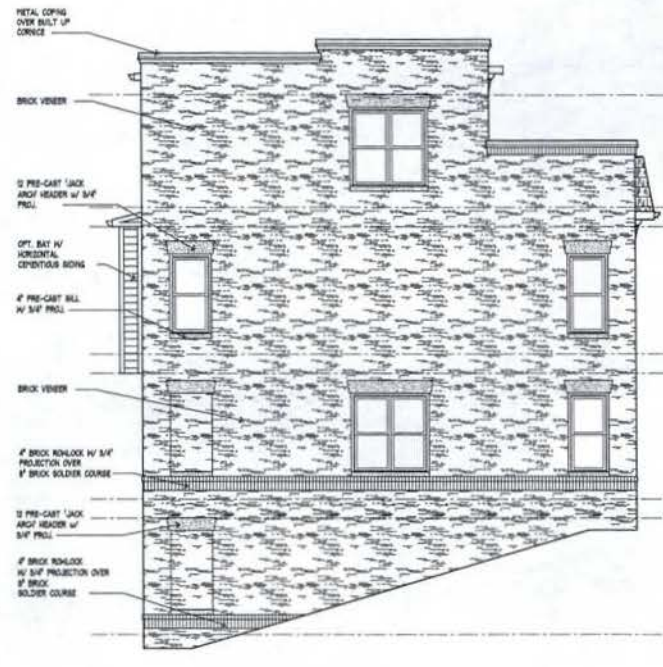
A-231



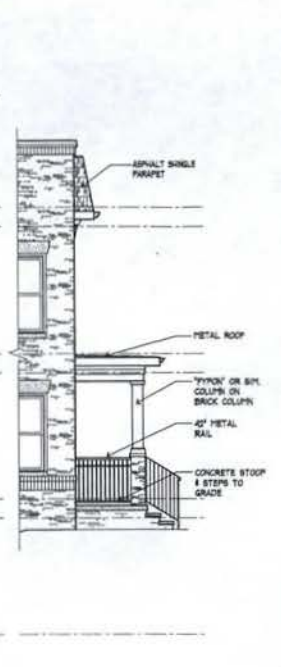
ELEVATION 3



ELEVATION 3a



ELEVATION 3b



ELEVATION 3c

Saint Paul's College
WASHINGTON, D.C.

THE NEIGHBORHOODS OF
EYA

UNIT ELEVATIONS

UNIT TYPE 'A-C'

April 2, 2008



LESSARD GROUP INC.
8523 Leesburg Pike, Ste. 707
Vienna, VA 22183
P: 703.760.9014
F: 703.760.8328
www.lessardgroup.com



VVA, INC.
30311 Century Blvd.
Germantown, MD 20874
P: 301.858.8300
F: 301.858.2363
www.vva.com



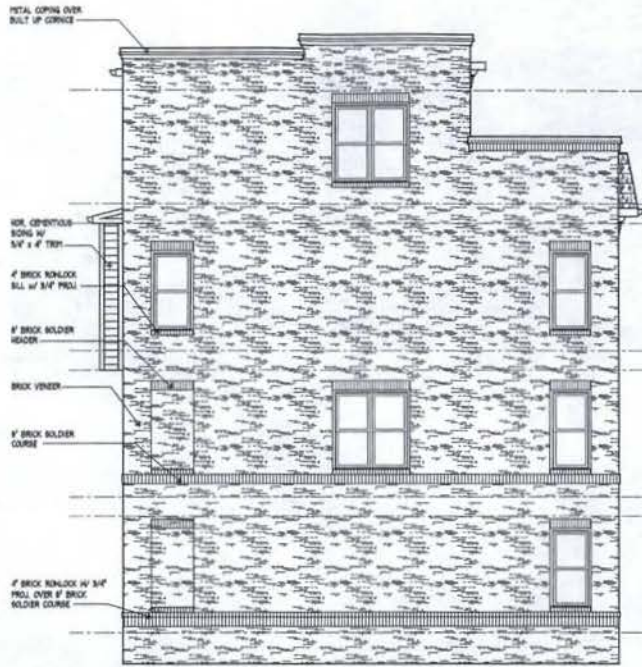
STUDIO 39
6415 Greenlawn Dr. Ste. 100-A
Alexandria, VA 22312
P: 703.713.6500
F: 703.713.5553
www.studio39.com

EYA.146a.00

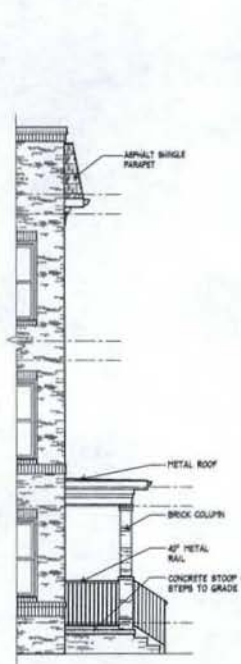


1/4" = 1'-0" EYA146a-232

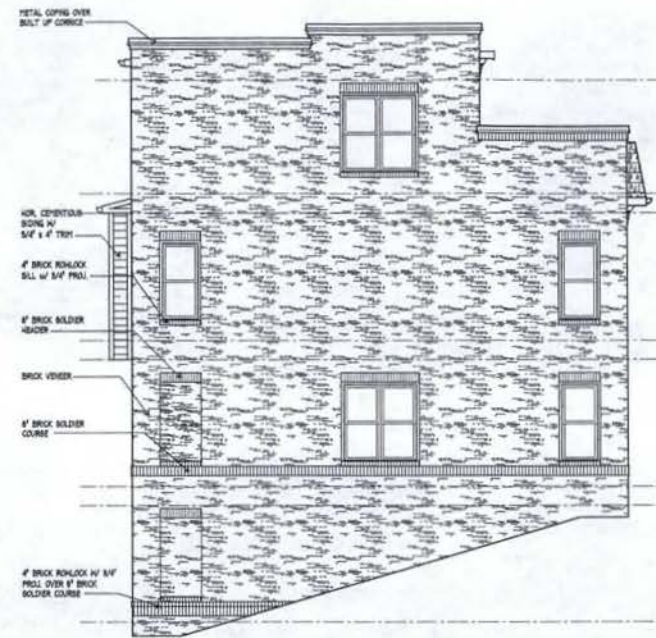
A-232



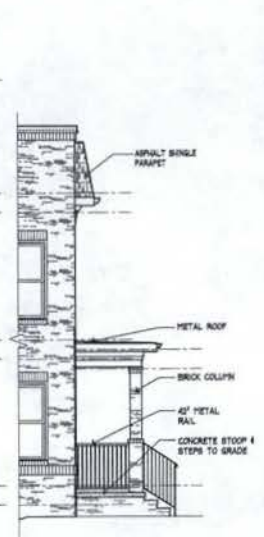
ELEVATION 4



ELEVATION 4a



ELEVATION 4b



ELEVATION 4c

Saint Paul's College
WASHINGTON, D.C.



UNIT ELEVATIONS

UNIT TYPE 'A - C'

April 2, 2008



LESSARD GROUP INC.
8331 Leesburg Pike, Ste. 700
Manassas, VA 22110
P: 703.790.2044
F: 703.790.0338
www.lessardgroup.com



VIKI INC.
2025 Century Blvd
Chesapeake, VA 23064
P: 703.515.4100
F: 703.515.2462
www.viki.com

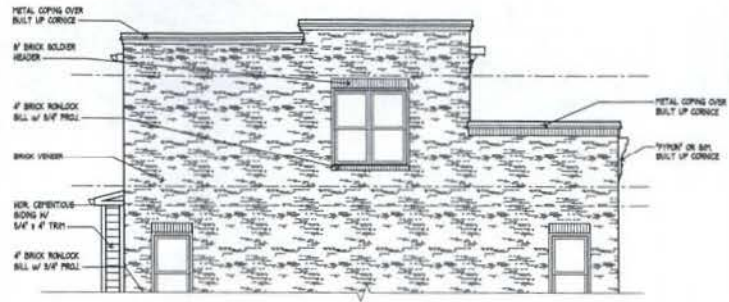


STUDIO 39
8416 Greenway Dr., Ste. 100-A
Alexandria, VA 22304
P: 703.719.8300
F: 703.719.8500
www.studio39.com

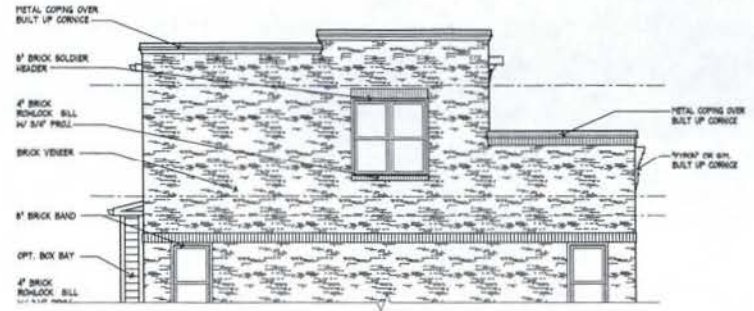
EYA.146a.00



A-233



ELEVATION 4



ELEVATION 2



ELEVATION 3



ELEVATION 1 & 6

Saint Paul's College
WASHINGTON, D.C.

THE NEIGHBORHOODS OF
EYA

UNIT ELEVATIONS

UNIT TYPE 'A - C'

April 2, 2008



LESSARD GROUP INC.
8331 Leesburg Pike, Ste. 705
Vienna, VA 22184
P: 703.760.8144
F: 703.760.8238
www.lessardgroup.com



VIKA, INC.
20311 Century Blvd.
Greenwood, MD 20929
P: 703.814.4100
F: 703.814.2882
www.vika.com



STUDIO 39
4414 Greenleaf Dr. Ste. 100 A
Alexandria, VA 22304
P: 703.719.6500
F: 703.719.6800
www.studio39.com

EYA.146a.00



A-234

Lot Tabulation

Lot #	Area (sf)	Bldg Coverage (sf)	Bldg Coverage (%)	Lot #	Area (sf)	Bldg Coverage (sf)	Bldg Coverage (%)	Lot #	Area (sf)	Bldg Coverage (sf)	Bldg Coverage (%)	Lot #	Area (sf)	Bldg Coverage (sf)	Bldg Coverage (%)
1	1,083	654	61.5%	51	1,085	654	60.3%	101	816	571	70.0%	151	768	571	74.3%
2	800	571	71.4%	52	918	642	69.9%	102	816	571	70.0%	152	768	571	74.3%
3	800	571	71.4%	53	918	571	62.2%	103	816	571	70.0%	153	864	642	74.3%
4	700	504	72.0%	54	816	571	70.0%	104	816	571	70.0%	154	1,021	654	64.1%
5	700	504	72.0%	55	816	642	78.7%	105	816	571	70.0%	155	1,028	577	56.1%
6	700	504	72.0%	56	918	654	71.2%	106	1,085	654	60.3%	156	849	571	67.3%
7	908	577	63.5%	57	1,085	654	60.3%	107	1,027	654	63.7%	157	743	504	67.8%
8	1,021	651	63.8%	58	1,126	642	57.0%	108	773	571	73.9%	158	743	504	67.8%
9	768	571	74.3%	59	892	642	72.0%	109	774	571	73.8%	159	743	504	67.8%
10	672	504	75.0%	60	893	642	71.9%	110	871	642	73.7%	160	1,023	577	56.4%
11	672	504	75.0%	61	895	654	73.1%	111	678	504	74.3%	161	1,134	654	57.7%
12	672	504	75.0%	62	1,042	654	62.8%	112	679	504	74.2%	162	864	571	66.1%
13	672	504	75.0%	63	1,112	642	57.7%	113	679	504	74.2%	163	864	571	66.1%
14	968	654	67.6%	64	864	642	74.3%	114	776	571	73.6%	164	864	571	66.1%
15	1,021	654	64.1%	65	864	642	74.3%	115	913	577	63.2%	165	972	642	66.0%
16	768	571	74.3%	66	864	642	74.3%	116	1,066	654	61.4%	166	756	504	66.7%
17	768	571	74.3%	67	1,021	654	64.1%	117	711	504	70.9%	167	756	504	66.7%
18	672	504	75.0%	68	1,101	654	59.4%	118	812	571	70.3%	168	1,256	654	52.1%
19	672	504	75.0%	69	760	571	75.1%	119	914	642	70.2%	169	1,256	654	52.1%
20	672	504	75.0%	70	760	571	75.1%	120	914	642	70.2%	170	976	642	65.8%
21	872	577	66.2%	71	665	504	75.8%	121	812	571	70.3%	171	885	571	64.5%
22	925	577	62.4%	72	665	504	75.8%	122	812	571	70.3%	172	916	571	62.3%
23	768	571	74.3%	73	855	642	75.1%	123	812	571	70.3%	173	1,121	654	58.3%
24	672	504	75.0%	74	855	642	75.1%	124	1,080	654	60.6%	174	1,103	654	59.3%
25	672	504	75.0%	75	1,009	654	64.8%	125	1,043	654	62.7%	175	918	642	69.9%
26	768	571	74.3%	76	1,136	654	57.6%	126	768	571	74.3%	176	797	571	71.6%
27	672	504	75.0%	77	672	504	75.0%	127	768	571	74.3%	177	693	504	72.7%
28	968	654	67.6%	78	1,021	654	64.1%	128	864	642	74.3%	178	693	504	72.7%
29	925	577	62.4%	79	952	577	60.6%	129	1,021	654	64.1%	179	1,049	577	55.0%
30	768	571	74.3%	80	816	571	70.0%	130	1,043	654	62.7%	180	1,049	577	55.0%
31	672	504	75.0%	81	714	504	70.6%	131	768	571	74.3%	181	693	504	72.7%
32	672	504	75.0%	82	816	571	70.0%	132	768	571	74.3%	182	693	504	72.7%
33	768	571	74.3%	83	714	504	70.6%	133	864	642	74.3%	183	792	571	72.1%
34	672	504	75.0%	84	816	571	70.0%	134	1,021	654	64.1%	184	891	642	72.1%
35	968	654	67.6%	85	935	576	61.6%	135	1,043	654	62.7%	185	1,047	654	62.5%
36	1,021	654	64.1%	86	1,136	654	57.6%	136	768	571	74.3%	186	886	577	65.1%
37	672	504	75.0%	87	672	504	75.0%	137	768	571	74.3%	187	644	504	78.3%
38	672	504	75.0%	88	1,021	654	64.1%	138	864	642	74.3%	188	644	504	78.3%
39	768	571	74.3%	89	1,023	577	56.4%	139	1,021	354	34.7%	189	644	504	78.3%
40	672	504	75.0%	90	769	571	74.3%	140	1,043	654	62.7%	190	644	504	78.3%
41	672	504	75.0%	91	767	571	74.4%	141	768	571	74.3%	191	973	654	67.2%
42	672	504	75.0%	92	765	571	74.9%	142	768	571	74.3%	192	978	654	66.9%
43	1,021	654	64.1%	93	668	504	75.4%	143	864	642	74.3%	193	736	571	77.6%
44	1,021	654	64.1%	94	667	504	75.6%	144	1,021	654	64.1%	194	736	571	77.6%
45	864	642	74.3%	95	1,010	654	64.8%	145	1,043	654	62.7%	195	644	504	78.3%
46	864	642	74.3%	96	1,084	654	60.3%	146	768	571	74.3%	196	644	504	78.3%
47	768	571	74.3%	97	816	571	70.0%	147	768	571	74.3%	197	736	571	77.6%
48	768	571	74.3%	98	918	571	62.2%	148	864	642	74.3%	198	978	654	66.9%
49	864	642	74.3%	99	918	642	69.9%	149	1,021	654	64.1%	199	1,010	654	64.8%
50	1,021	654	64.1%	100	816	642	78.7%	150	1,043	654	62.7%	200	855	642	75.1%

Lot #	Area (sf)	Bldg Coverage (sf)	Bldg Coverage (%)
201	760	571	75.1%
202	760	571	75.1%
203	760	571	75.1%
204	760	571	75.1%
205	665	504	75.8%
206	665	504	75.8%
207	760	571	75.1%
208	760	571	75.1%
209	1,004	654	65.1%
210	1,021	654	64.1%
211	864	642	74.3%
212	768	571	74.3%
213	864	642	74.3%
214	864	642	74.3%
215	672	504	75.0%
216	672	504	75.0%
217	768	571	74.3%
218	1,021	654	64.1%
219	925	576	62.3%
220	768	571	74.3%
221	672	504	75.0%
222	672	504	75.0%
223	768	571	74.3%
224	768	571	74.3%
225	672	504	75.0%
226	672	504	75.0%
227	672	504	75.0%
228	925	576	62.3%
229	1,021	654	64.1%
230	864	642	74.3%
231	672	504	75.0%
232	672	504	75.0%
233	768	571	74.3%
234	768	571	74.3%
235	1,021	654	64.1%
236	990	576	58.2%
237	942	576	61.1%
Total Lot Area:	200,843	138,147	68.8%
*Common Area:	245,322	*Includes private streets, alleys, parking	
Total Site Area:	446,165		31.0%

Last Updated: 4/2/2008 14:20



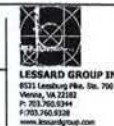
Saint Paul's College
WASHINGTON, D.C.



LAYOUT: C-48, Plotted By: Guster
K:\1000-1500\1453\cond\prnt\lbrary\1453100.dwg - Apr 02, 2008 AT 3:12:28 PM

LOT OCCUPANCY INFORMATION

April 2, 2008



C-48

Minimum Building Setbacks

Bldg #	Front Provided ^	Side Yard Setback				Rear Yard Setback			
		Controlling Lot #****	Bldg height at Side	Required	Provided ^	Controlling Lot #	Bldg height at Rear	Required	Provided ^
1	34.6	R 7	41.70	13.90	1.5*****	7	42.80	14.3	13.0
		L 7	42.83	NA***	NA				
2	7.0	R 8	43.00	NA***	NA	14	44.80	14.9	13.0
		L 14	43.00	14.33	1.5*****				
3	7.0	R 21	42.00	14.00	1.5*****	15	42.27	14.1	13.0
		L 15	43.67	NA***	NA				
4	7.0	R 22	43.80	NA***	NA	22	44.60	14.9	13.0
		L 28	44.33	14.78	1.5*****				
5	7.0	R 35	46.67	15.22	1.5*****	29	42.20	14.1	13.0
		L 29	43.00	NA***	NA				
6	7.0	R 36	43.67	NA***	NA	36	44.77	14.9	13.0
		L 43	43.67	14.56	12.5				
7	7.0	R 50	42.83	14.28	12.5	44	41.90	14.0	13.0
		L 44	42.50	NA***	NA				
8	20.2	R 51	42.63	NA***	NA	51	44.73	14.9	13.0
		L 57	43.17	14.39	12.5				
9**	27.6*	R 62	49.83	NA***	NA	58	51.40	17.1	13.0
		L 58	54.50	NA***	NA				
10	7.0	R 63	47.33	NA***	NA	67	42.90	14.3	13.0
		L 67	42.00	NA***	NA				
11	7.0	R 75	48.19	16.06	43.2	75	52.59	17.5	13.0
		L 68	50.52	NA***	NA				
12	7.0	R 76	44.00	NA***	NA	76	42.50	14.2	13.0
		L 78	41.67	13.89	2.6				
13	7.0	R 88	49.52	16.51	2.6	86	52.19	17.4	13.0
		L 86	50.19	NA***	NA				
14	10.0	R 79	43.33	NA***	NA	79	44.43	14.8	13.0
		L 85	44.00	NA***	NA				
15	10.5	R 106	50.86	NA***	NA	106	52.26	17.4	13.0
		L 96	47.52	NA***	NA				
16	25.7*	R 89	43.33	NA***	NA	89	35.00	35.0	13.0
		L 95	43.00	14.33	2.6				
17	33.4*	R 115	42.17	14.06	2.6	107	44.00	14.7	13.0
		L 107	43.00	NA***	NA				
18	14.1	R 116	44.50	NA***	NA	124	42.50	14.2	13.0
		L 124	43.50	14.50	2.6				

Bldg #	Front Provided ^	Side Yard Setback				Rear Yard Setback			
		Controlling Lot #****	Bldg height at Side	Required	Provided ^	Controlling Lot #	Bldg height at Rear	Required	Provided ^
19	7.0	R 129	53.39	17.80	14.5	125	51.92	17.3	13.0
		L 125	50.02	NA***	NA				
20	7.0	R 130	43.67	NA***	NA	130	42.07	14.0	13.0
		L 134	50.03	16.68	14.5				
21	7.0	R 139	51.17	17.06	14.5	135	43.90	14.6	13.0
		L 135	42.50	NA***	NA				
22	7.0	R 140	42.50	NA***	NA	144	44.37	14.8	13.0
		L 144	51.17	17.06	14.5				
23	7.0	R 149	48.50	16.17	14.5	145	42.00	14.0	13.0
		L 145	43.50	NA***	NA				
24	7.0	R 150	48.86	NA***	NA	150	52.08	17.4	13.0
		L 154	51.33	17.11	14.5				
26	34.4*	R 160	45.17	15.06	10.5	155	42.87	14.3	13.0
		L 155	42.67	NA***	NA				
26	39.0*	R 168	47.19	15.73	4.6	161	52.39	17.5	13.0
		L 161	50.19	NA***	NA				
27	39.0*	R 173	48.86	NA***	NA	173	52.46	17.5	13.0
		L 169	50.19	16.73	4.6				
28**	34.5*	R 179	56.52	18.84	4.5	179	59.82	19.9	13.0
		L 174	56.19	NA***	NA				
29**	34.5*	R 185	56.86	NA***	NA	185	59.36	19.8	13.0
		L 180	55.52	18.51	4.5				
30	18.3	R 186	41.93	NA***	NA	191	42.70	14.2	13.0
		L 191	42.00	14.00	2.6				
31	5.0	R 192	42.67	NA***	NA	198	42.63	14.2	13.0
		L 198	42.63	14.21	14.3				
32	32.2*	R 199	43.00	14.33	11.5	209	42.73	14.2	13.0
		L 209	41.63	13.88	2.6				
33	11.3	R 218	43.00	14.33	16.5	210	44.67	14.9	13.0
		L 210	44.67	NA***	NA				
34	7.0	R 219	44.00	NA***	NA	228	42.00	14.0	13.0
		L 228	42.00	14.00	31.7				
35	7.0	R 235	43.67	14.56	13.7	235	43.87	14.6	13.0
		L 229	42.67	NA***	NA				
36	29.5*	R 236	42.50	NA***	NA	237	42.50	14.2	13.0
		L 237	42.50	14.17	6.7				

- Notes:
- * Measured to Center of Alley or Private Street
 - ** Buildings 9, 28 and 29 will have a peaked roof (LFF to highest point of roof = 48.0 feet); all other buildings will have flat roofs (LFF to highest point of roof = 41.0)
 - *** NA = None required, considered corner lot
 - **** Side setback direction determined from facing front of building
 - ***** Requested 15.0' No-Build easement from adjacent land owner to increase effective side or rear yard
 - ^ All setbacks shown provided in this chart have been reduced 0.5 feet from that shown in plan to allow for variance in thickness of exterior wall treatments

last updated: 4/2/2008 17:22

K:\1000-1500\1453_documents\1453A\plan\preliminary plans\lot_tabulation_021908.xls

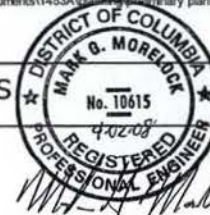
Saint Paul's College
WASHINGTON, D.C.



LEVER: 6-6, Pinned by Gabe
K:\1000-1500\1453\plan\preliminary\145302_1453A.dwg - Apr 01, 2008 at 8:28:05 PM

MINIMUM SETBACK TABULATIONS

April 2, 2008



LESSARD GROUP INC.
8011 Leesburg Pike, Ste. 700
Arling, VA 22202
P: 703.748.0100
F: 703.748.0108
www.lessardgroup.com



VISA, INC.
2001 Gateway Blvd.
Commerce, MD 20824
P: 703.633.6200
F: 703.633.2283
www.visa.com



STUDIO 39
4412 Greenway Dr., Ste. 100A
Arlington, VA 22218
P: 703.714.8200
F: 703.714.8203
www.studio39.com

1453A



NTS

C-41