

CALL "MISS UTILITY"
at
1-800-257-7777
48 Hours Before Start Of Construction



Saint Paul's College
WASHINGTON, D.C.



DETAILED WET UTILITY PLAN

April 2, 2008

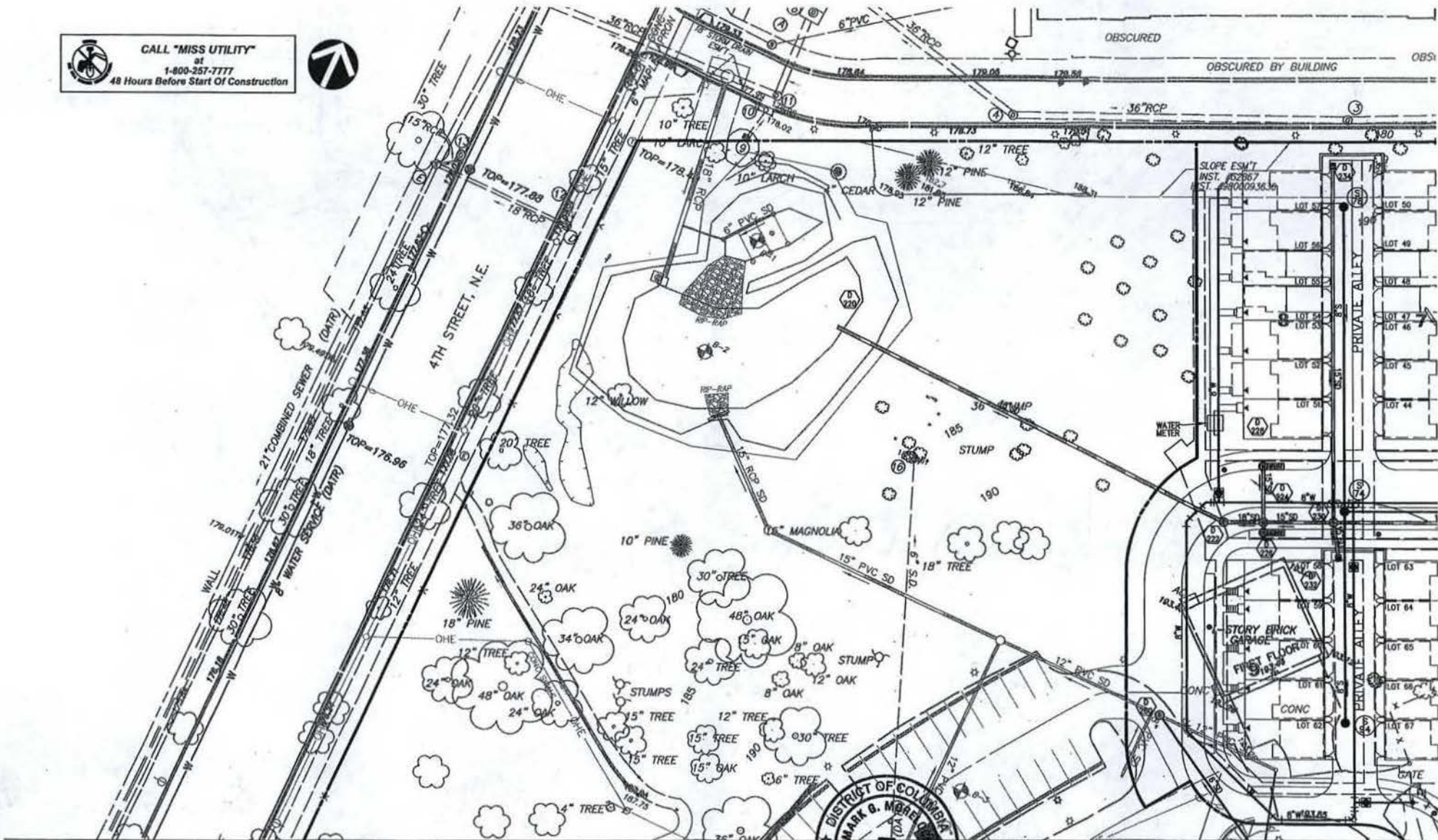


1453A
PLANNING COMMISSION
District of Columbia
CASE NO.07-27
EXHIBIT NO.17A3

C-19



CALL "MISS UTILITY"
at
1-800-257-7777
48 Hours Before Start Of Construction



Saint Paul's College
WASHINGTON, D.C.
THE NEIGHBORHOODS OF
EYA

DETAILED WET UTILITY PLAN

April 2, 2008



LESSARD GROUP INC.
2033 Century Blvd.
Vienna, VA 22182
P: 703.770.0344
F: 703.770.0328
www.lessardgroup.com

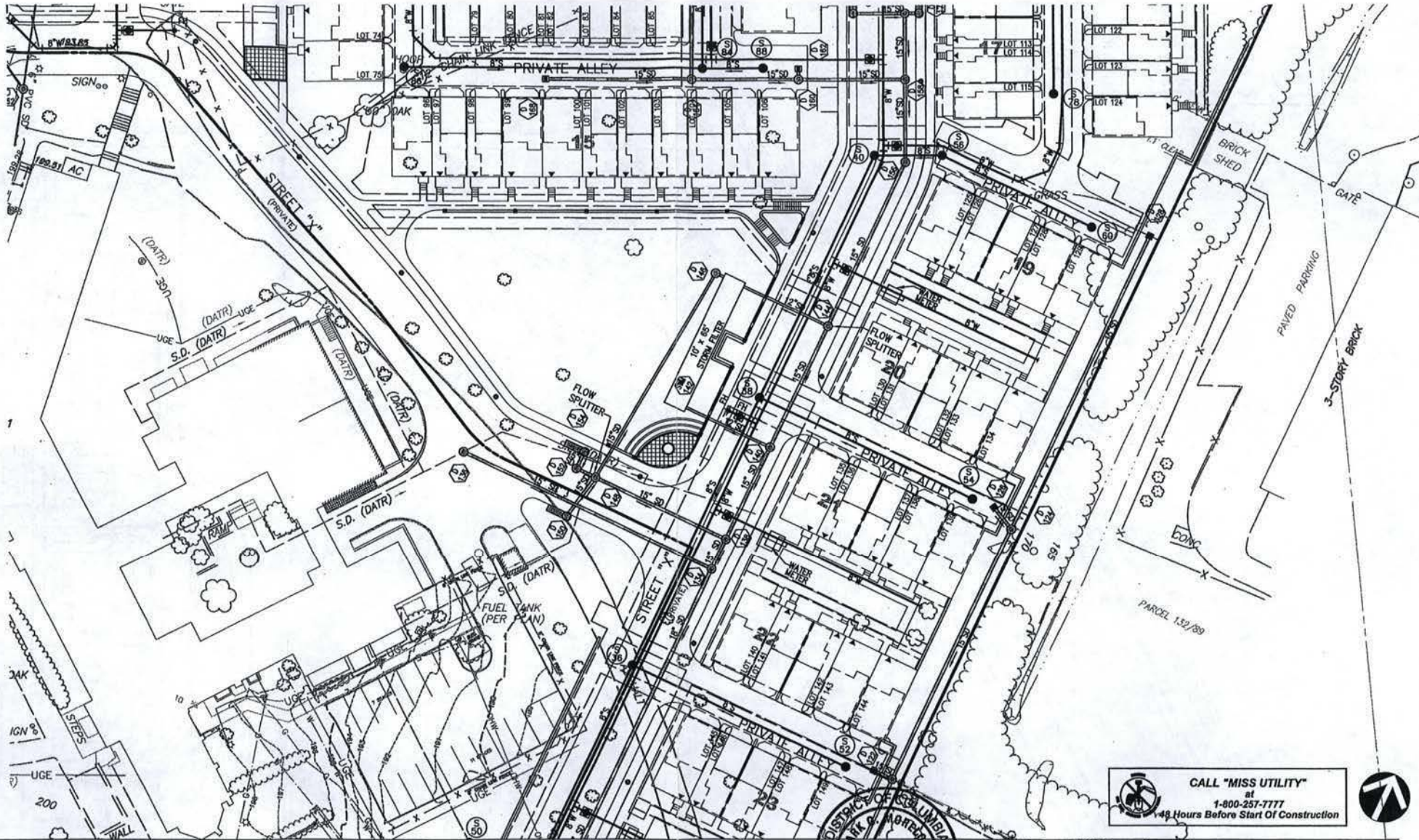
VEKA, INC.
2033 Century Blvd.
Gwynnsville, VA 22139
P: 703.770.0300
F: 703.770.0303
www.veka.com

STUDIOS 3P
4418 Greenleaf Dr., Ste. 100-4
Alexandria, VA 22310
P: 703.770.0200
www.studios3p.com

1453A



C-20



CALL "MISS UTILITY"
 at
 1-800-257-7777
 48 Hours Before Start Of Construction



Saint Paul's College
 WASHINGTON, D.C.

THE NEIGHBORHOODS OF
EYA

DETAILED WET UTILITY PLAN

April 2, 2008



LESSARD GROUP INC.
 8231 Leesburg Pike, Ste. 700
 Vienna, VA 22182
 P: 703.760.8544
 F: 703.760.9338
 www.lessardgrp.com

VKA, INC.
 20251 Century Blvd.
 Chesapeake, VA 23030
 P: 703.516.4500
 F: 703.516.5242
 www.vka.com

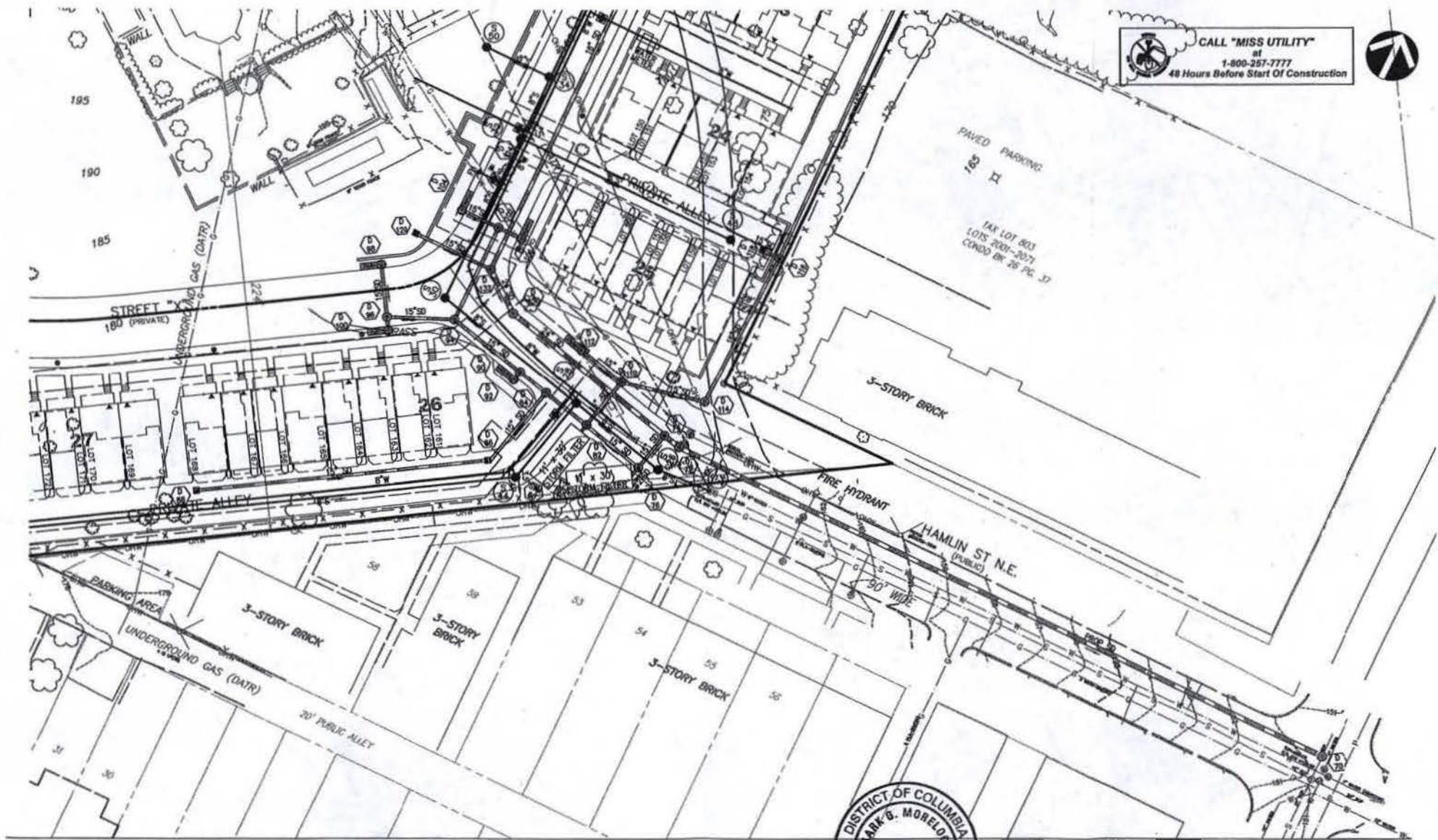
STUDIO 30
 6416 Grandville Dr., Ste. 100-A
 Alexandria, VA 22304
 P: 703.738.6500
 F: 703.738.6028
 www.studio30.com

1453A



C-21

CALL "MISS UTILITY"
 at
 1-800-257-7777
 48 Hours Before Start Of Construction



Saint Paul's College
 WASHINGTON, D.C.



DETAILED WET UTILITY PLAN

April 2, 2008



LESSARD GROUP INC.
 8811 Landings Place, Ste. 700
 Manassas, VA 20108
 P: 703.760.8444
 F: 703.760.8338
 www.lessardgroup.com

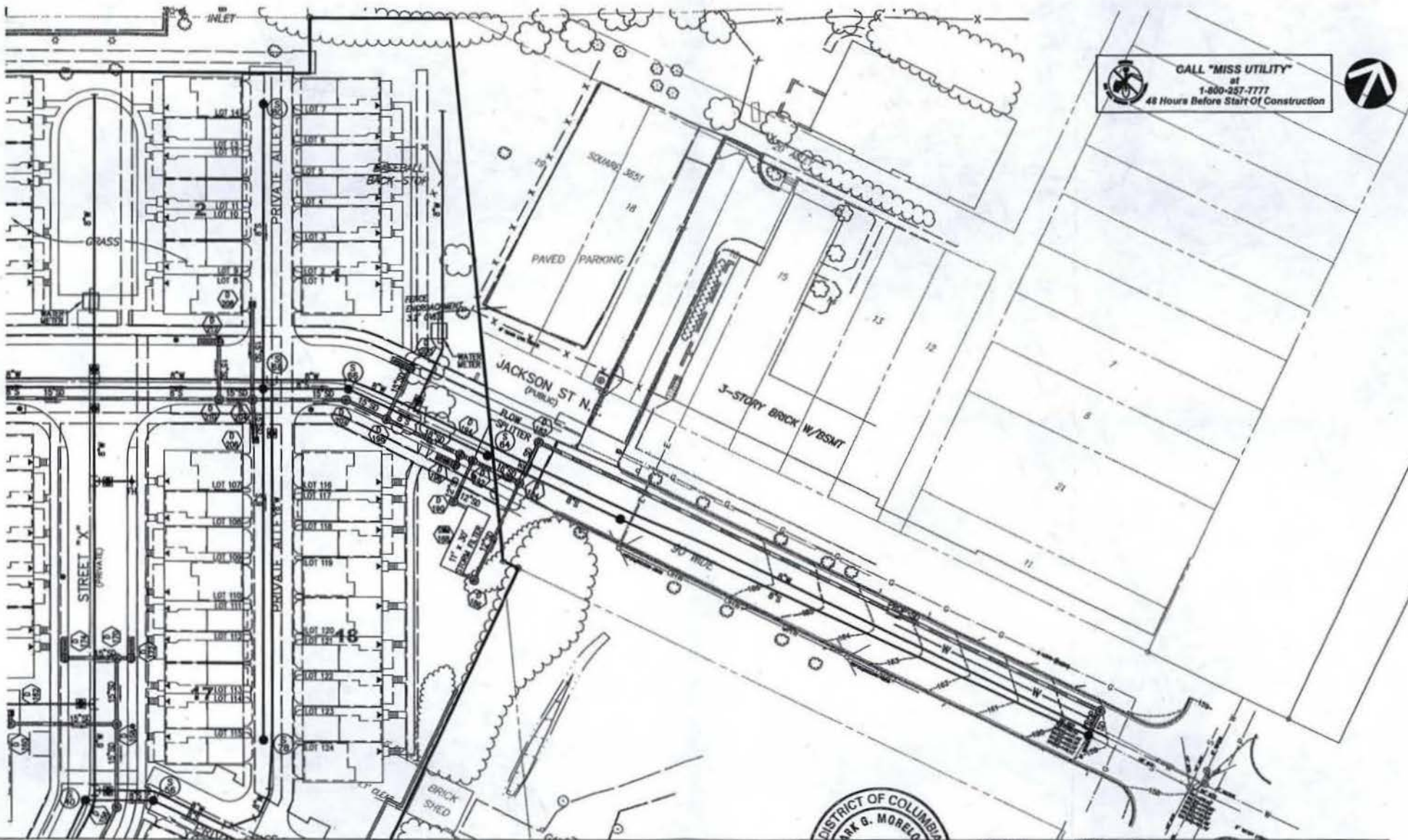
VIVA, INC.
 2855 Century Blvd.
 Chantilly, VA 20151
 P: 703.818.4100
 F: 703.818.5242
 www.viva.com

STUDIO 38
 4518 Greenleaf Dr., Ste. 100-A
 Alexandria, VA 22304
 P: 703.719.0000
 F: 703.712.4002
 www.studio38.com

1453A



C-22



CALL "MISS UTILITY"
at
1-800-257-7777
48 Hours Before Start Of Construction



Saint Paul's College
WASHINGTON, D.C.

DETAILED WET UTILITY PLAN

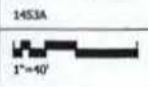
April 2, 2008

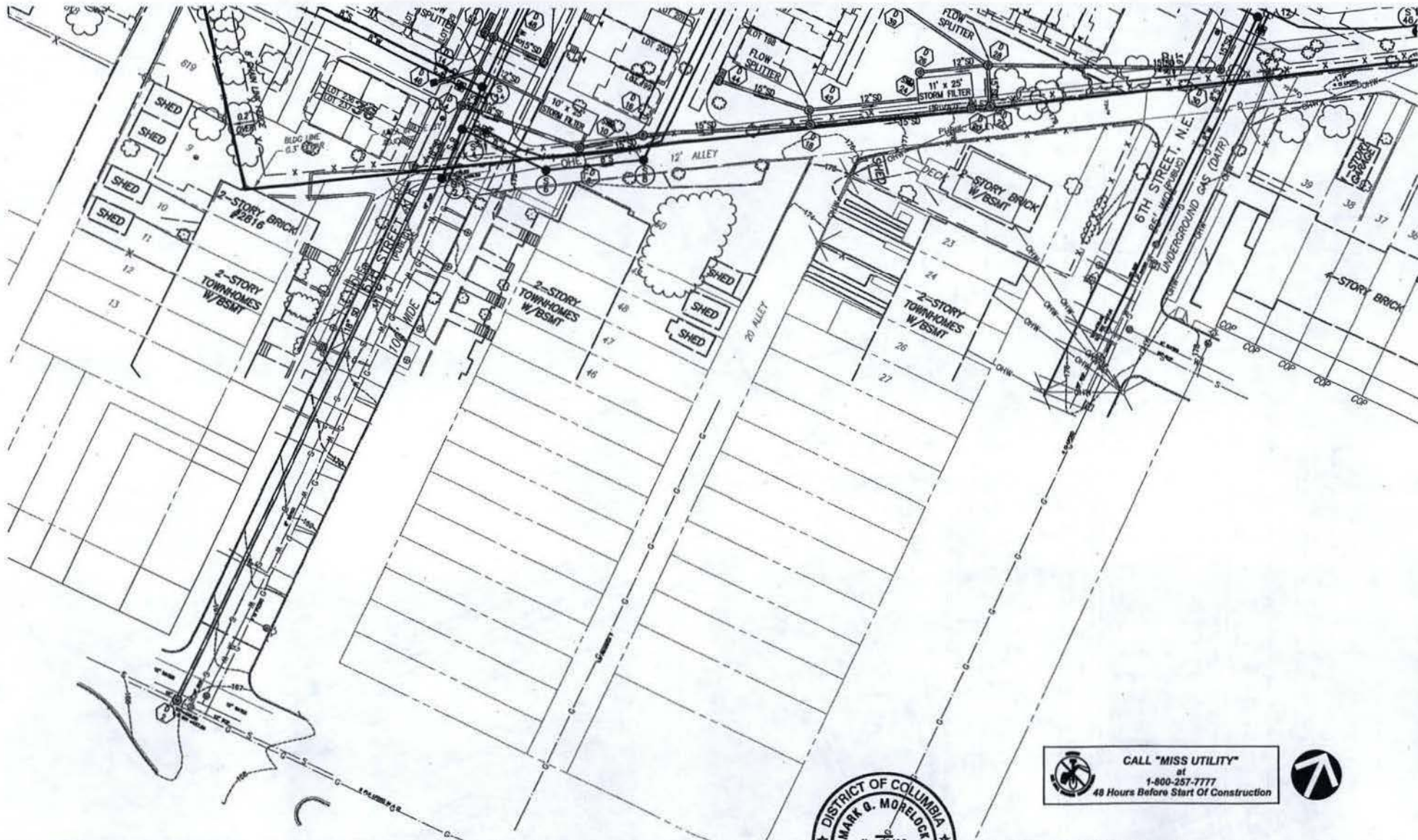


LESSARD GROUP INC.
2121 Leesylvania Rd., Ste. 100
Alexandria, VA 22304
P: 703.760.8104
F: 703.760.8100
www.lessardgroup.com

VISA, INC.
3200 Century Blvd.
Baltimore, MD 21046
P: 781.753.4000
F: 781.753.2262
www.visa.com

STUDIO 30
4115 Greenleaf Dr., Ste. 100-A
Alexandria, VA 22304
P: 703.753.4000
F: 703.753.4001
www.studio30.com





CALL "MISS UTILITY"
 at
 1-800-257-7777
 48 Hours Before Start Of Construction



Saint Paul's College
 WASHINGTON, D.C.



DETAILED WET UTILITY PLAN

April 2, 2008

LESSARD GROUP INC.
 8021 Landberg Pike, Ste. 700
 Manassas, VA 22120
 P: 703.768.9700
 F: 703.768.9700
 www.lessardgroup.com

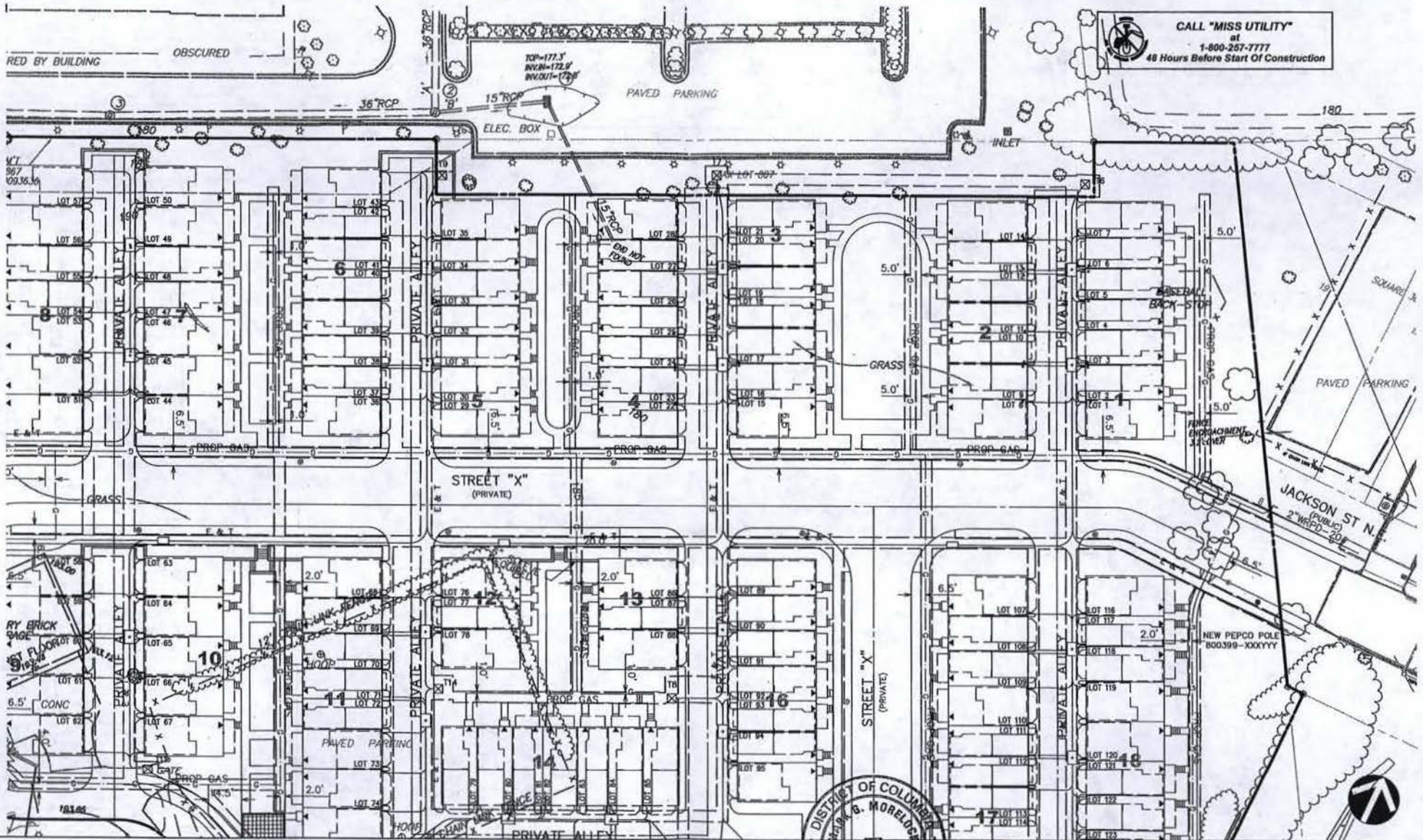
VIFA, INC.
 3021 Century Blvd
 Gaithersburg, MD 20878
 P: 301.984.6100
 F: 301.984.2382
 www.vifa.com

STUDIO 39
 4414 Greenleaf St., Ste. 100-A
 Alexandria, VA 22304
 P: 703.715.6000
 F: 703.715.6000
 www.studio39.com

1453A



C-25



CALL "MISS UTILITY"
at
1-800-257-7777
48 Hours Before Start Of Construction

Saint Paul's College
WASHINGTON, D.C.
THE NEIGHBORHOODS OF
EYA

DETAILED DRY UTILITY PLAN

April 2, 2008

DISTRICT OF COLUMBIA
WOLFGANG G. MORELOS
No. 10615
4-02-08
REGISTERED
PROFESSIONAL ENGINEER

LESSARD GROUP INC.
8521 Leesbury Pike, Ste. 700
Vienna, VA 22188
P: 703.760.8744
F: 703.760.8739
www.lessardgroup.com

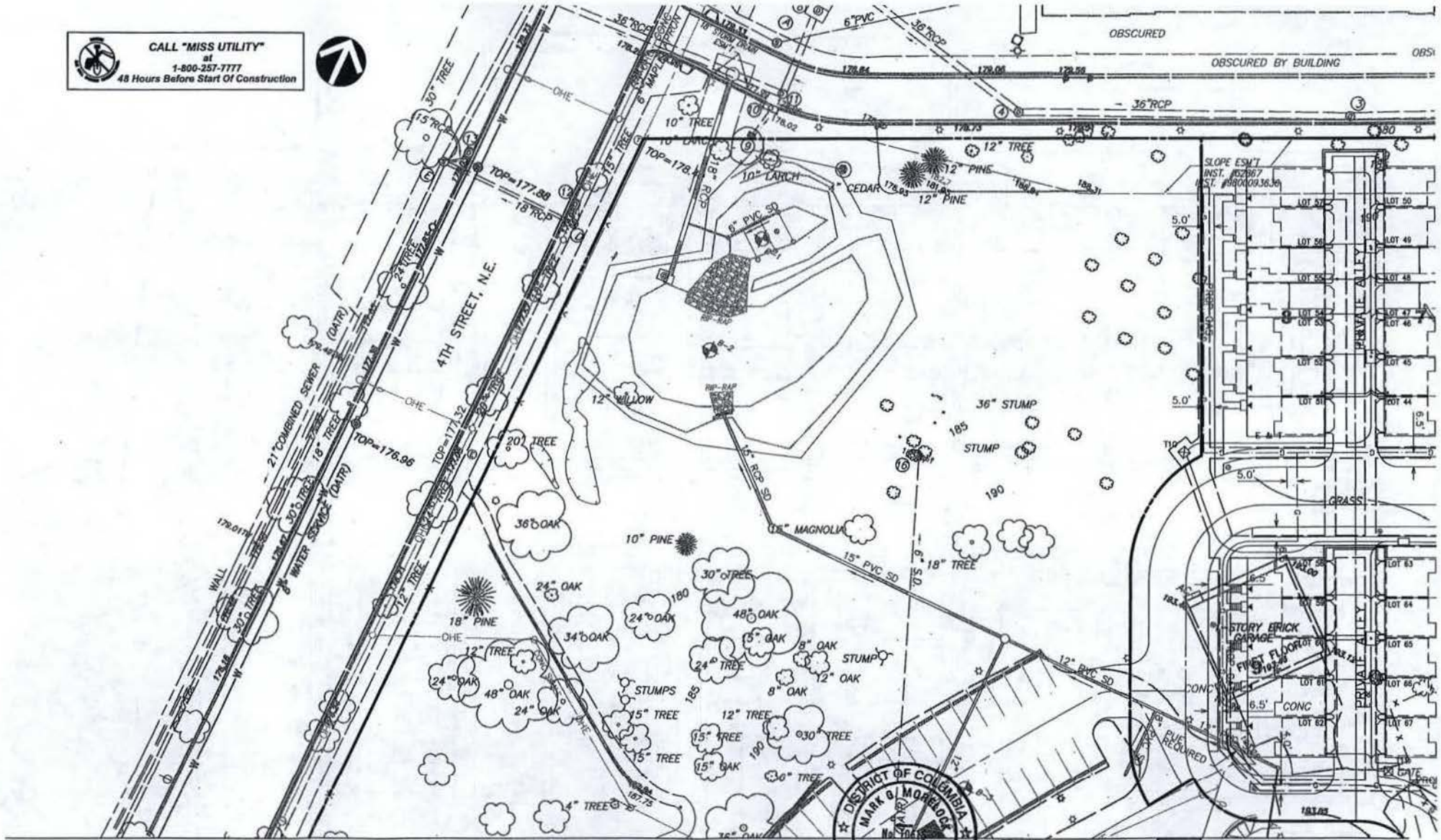
VJKA, INC.
20215 Century Blvd.
Alexandria, VA 22304
P: 703.778.0200
F: 703.778.0201
www.vjka.com

STUDIO 39
6412 Greenleaf Ct. Ste. 100-A
Alexandria, VA 22318
P: 703.778.0200
F: 703.778.0201
www.studio39.com

1453A
1"=40'

C-26

CALL "MISS UTILITY"
at
1-800-257-7777
48 Hours Before Start Of Construction



Saint Paul's College
WASHINGTON, D.C.



DETAILED DRY UTILITY PLAN

April 2, 2008



LESSARD GROUP INC.
8011 Landover Pk. Ste. 700
Landover, MD 20785
P: 703.703.5344
F: 703.703.9338
www.lessardgroup.com

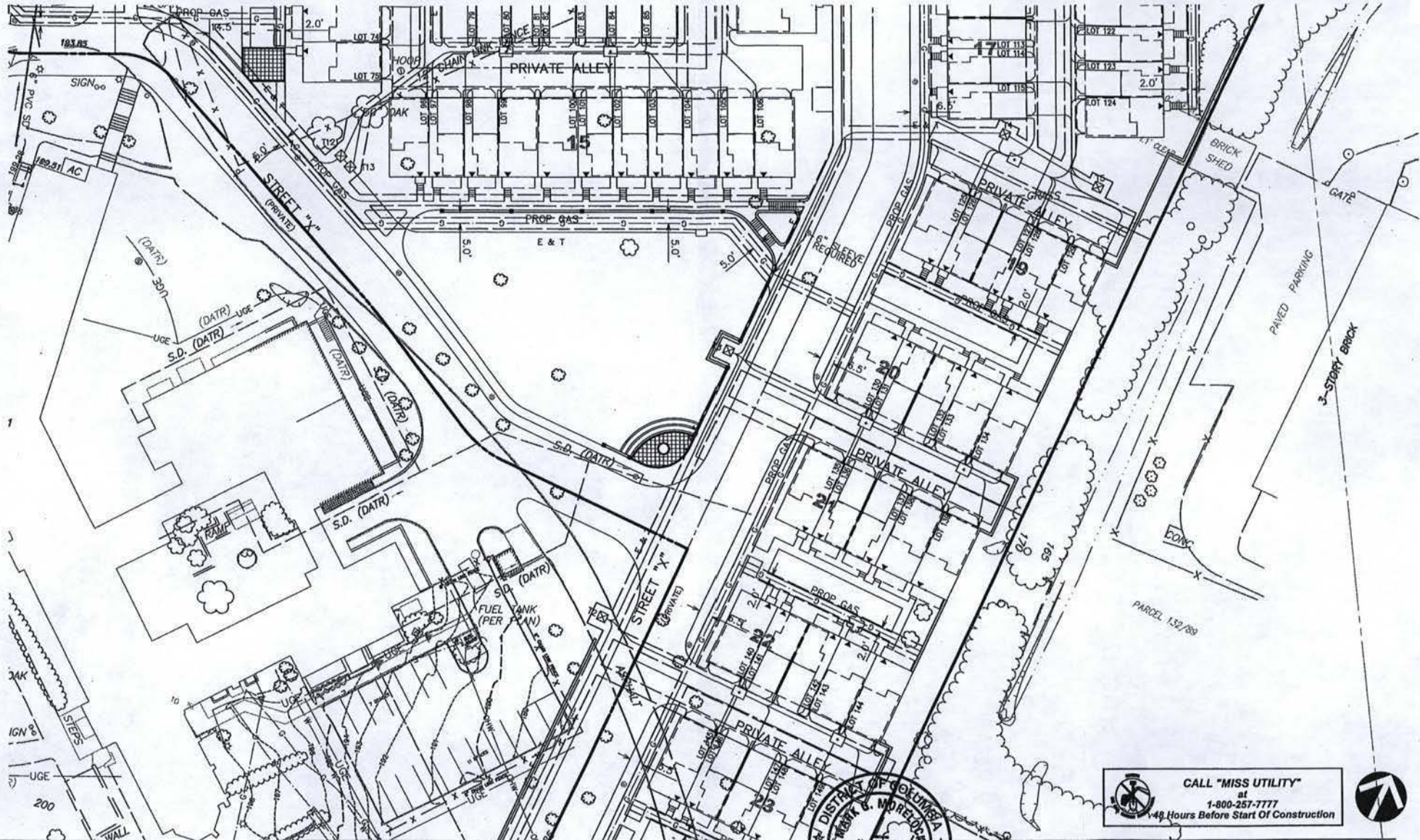
VIFA, INC.
2022 Century Blvd.
Greenbelt, MD 20747
P: 301.246.4300
F: 301.246.2262
www.vifa.com

STUDIO 39
9433 Greenbelt Dr. Ste. 100A
Greenbelt, MD 20748
P: 301.278.0000
F: 301.278.0003
www.studio39.com

1453A



C-27



Saint Paul's College
WASHINGTON, D.C.



DETAILED DRY UTILITY PLAN

April 2, 2008



CALL "MISS UTILITY"
at
1-800-257-7777
48 Hours Before Start Of Construction



LESSARD GROUP INC.
6021 Landover Pike, Ste. 700
Vienna, VA 22182
P: 703.268.0214
F: 703.768.0208
www.lessardgroup.com

VEKA INC.
2025 Country Blvd.
Germantown, MD 20874
P: 301.618.4500
F: 301.618.2302
www.veka.com

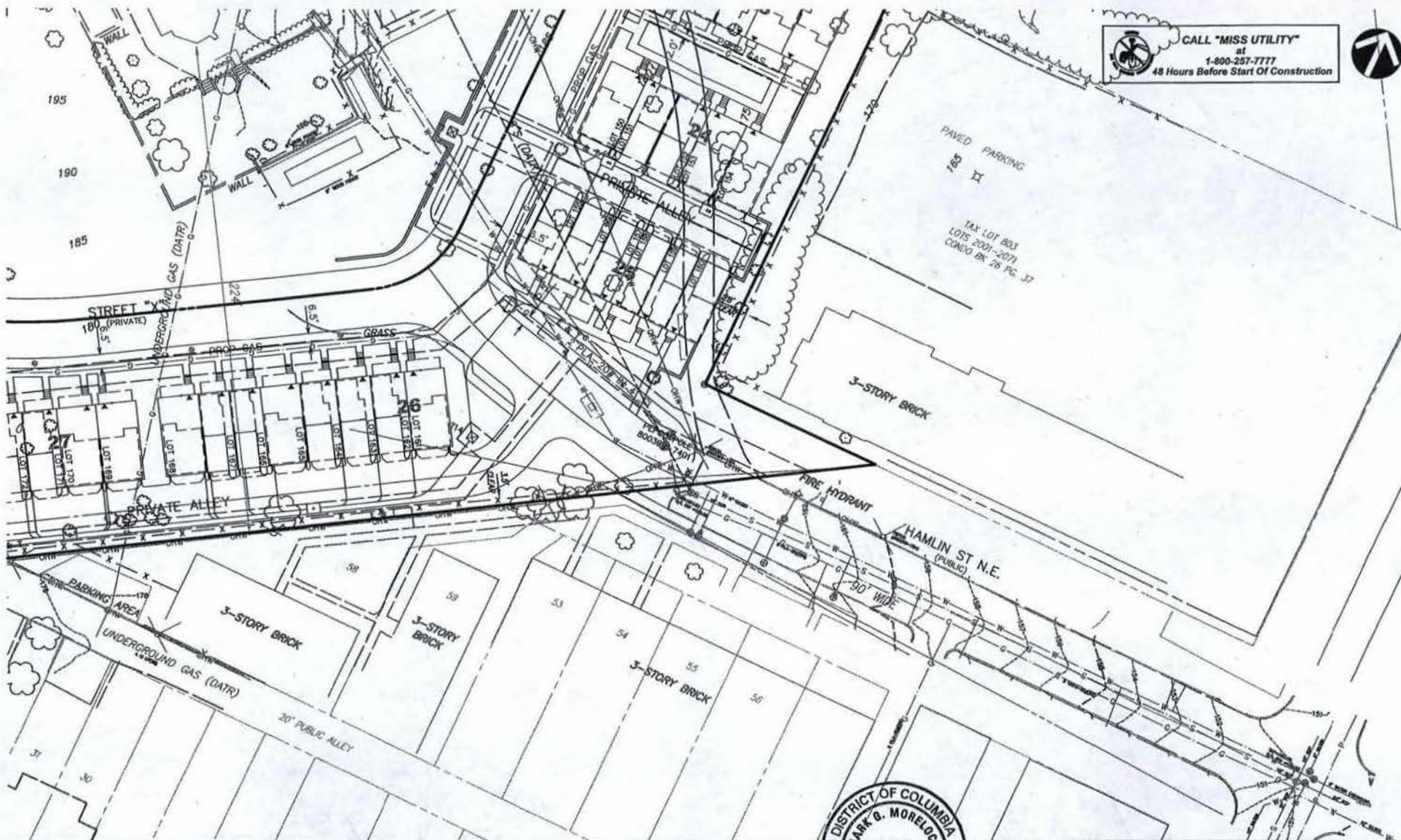
STUDIO 30
6415 Greenleaf Dr., Ste. 100-A
Alexandria, VA 22310
P: 703.218.6200
F: 703.218.6203
www.studio30.com

1453A



C-28

CALL "MISS UTILITY"
 at
 1-800-257-7777
 48 Hours Before Start Of Construction



Saint Paul's College
 WASHINGTON, D.C.



DETAILED DRY UTILITY PLAN

April 2, 2008



LESSARD GROUP INC.
 8025 Leesboro Pike, Ste. 700
 Manassas, VA 22033
 P: 703.258.2941
 F: 703.795.8708
 www.lessardgroup.com

VIFA, INC.
 2022 Century Blvd.
 Quantico, VA 22084
 P: 703.714.6000
 F: 703.714.6002
 www.vifa.com

STUDIO 39
 4021 Greenleaf Dr., Ste. 100-A
 Alexandria, VA 22304
 P: 703.714.6000
 F: 703.714.6002
 www.studio39.com

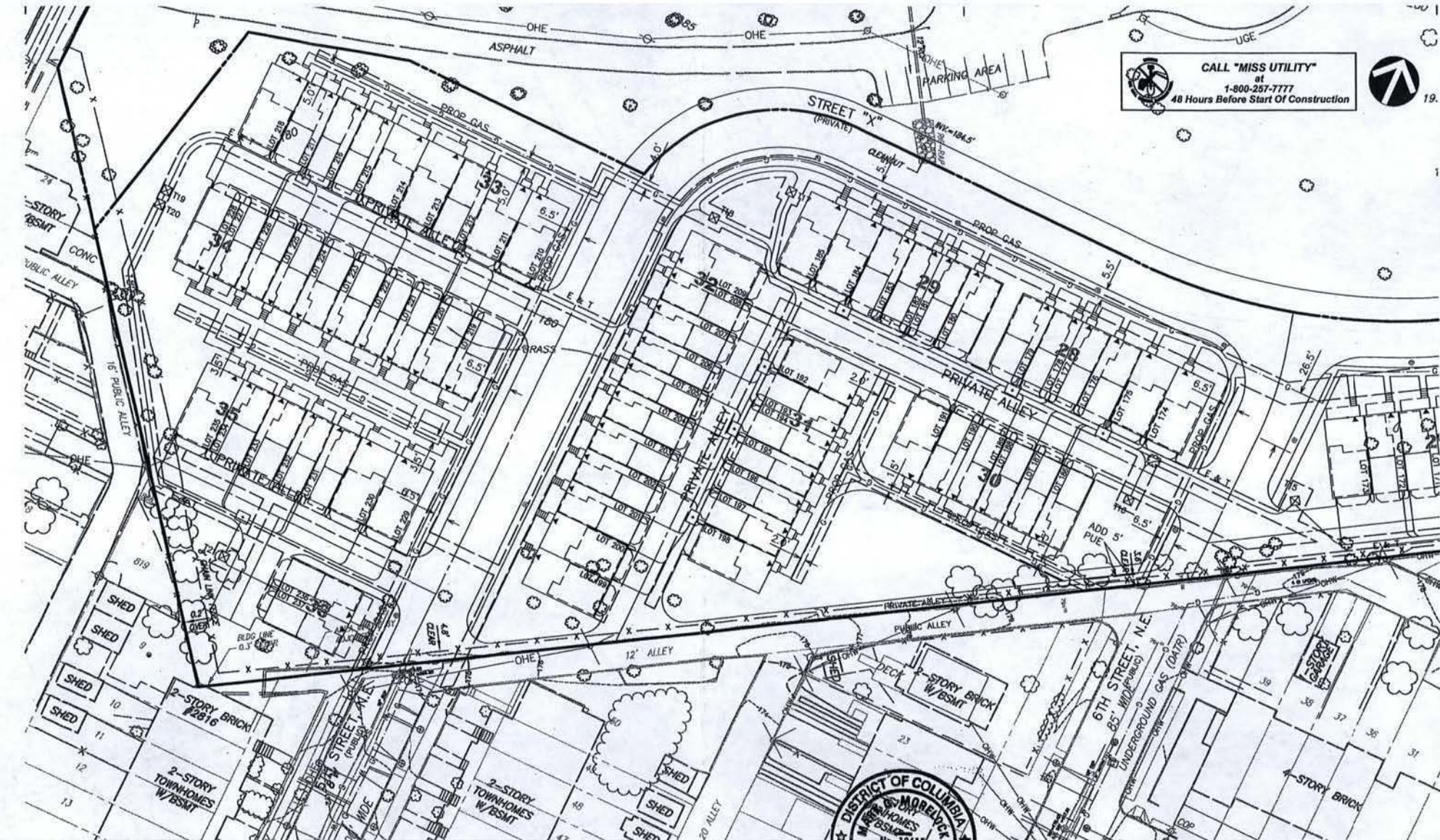
1453A



1"=40'

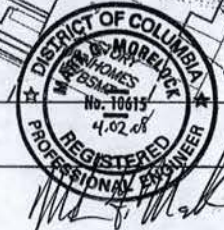
C-29

CALL "MISS UTILITY"
 at
 1-800-257-7777
 48 Hours Before Start Of Construction



Saint Paul's College
 WASHINGTON, D.C.

DETAILED DRY UTILITY PLAN

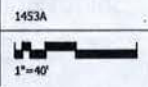


April 2, 2008

LESSARD GROUP INC.
 8531 Lumbury Pike, Ste. 700
 Vienna, VA 22182
 P: 703.260.9344
 F: 703.760.9338
 www.lessardgroup.com

VIFA INC.
 20221 Gateway Blvd
 Germantown, MD 20899
 P: 301.846.4500
 F: 301.846.2852
 www.vifa.com

STUDIO 39
 6414 Greenleaf Dr. Ste. 100-A
 Alexandria, VA 22310
 P: 703.736.6200
 F: 703.731.6003
 www.studio39.com

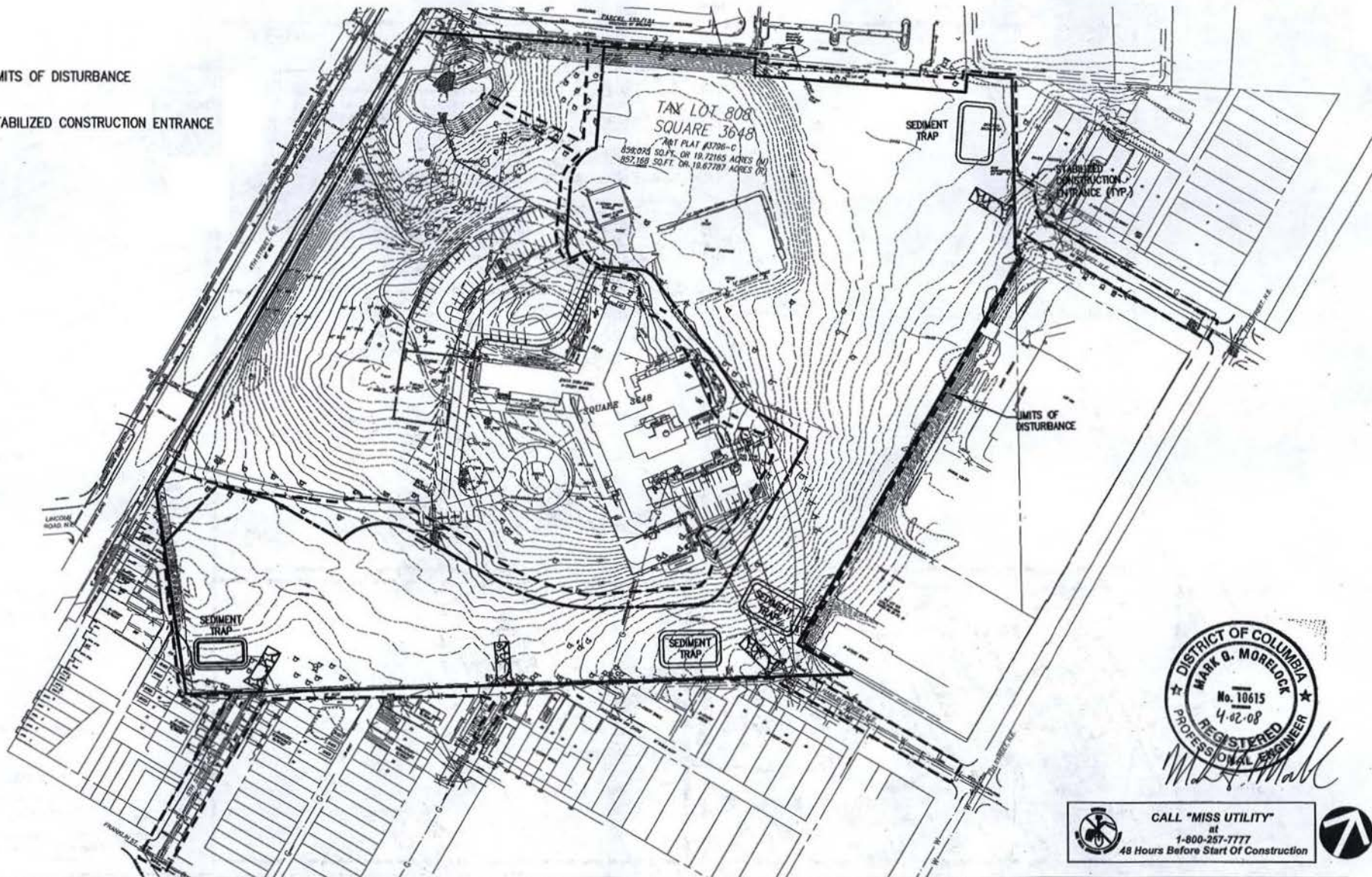


C-30

LEGEND

--- LIMITS OF DISTURBANCE

 STABILIZED CONSTRUCTION ENTRANCE



DISTRICT OF COLUMBIA
 MARK G. MORELOCK
 No. 18615
 4.02.08
 REGISTERED
 PROFESSIONAL ENGINEER
Mark G. Morelock

 CALL "MISS UTILITY"
 at
 1-800-257-7777
 48 Hours Before Start Of Construction 

Saint Paul's College
 WASHINGTON, D.C.

CONCEPT SEDIMENT & EROSION CONTROL PLAN

April 2, 2008




LESSARD GROUP INC.
 8031 Leesburg Pike, Ste. 700
 Vienna, VA 22186
 P: 703.750.8344
 F: 703.750.9328
 www.lessardgroup.com

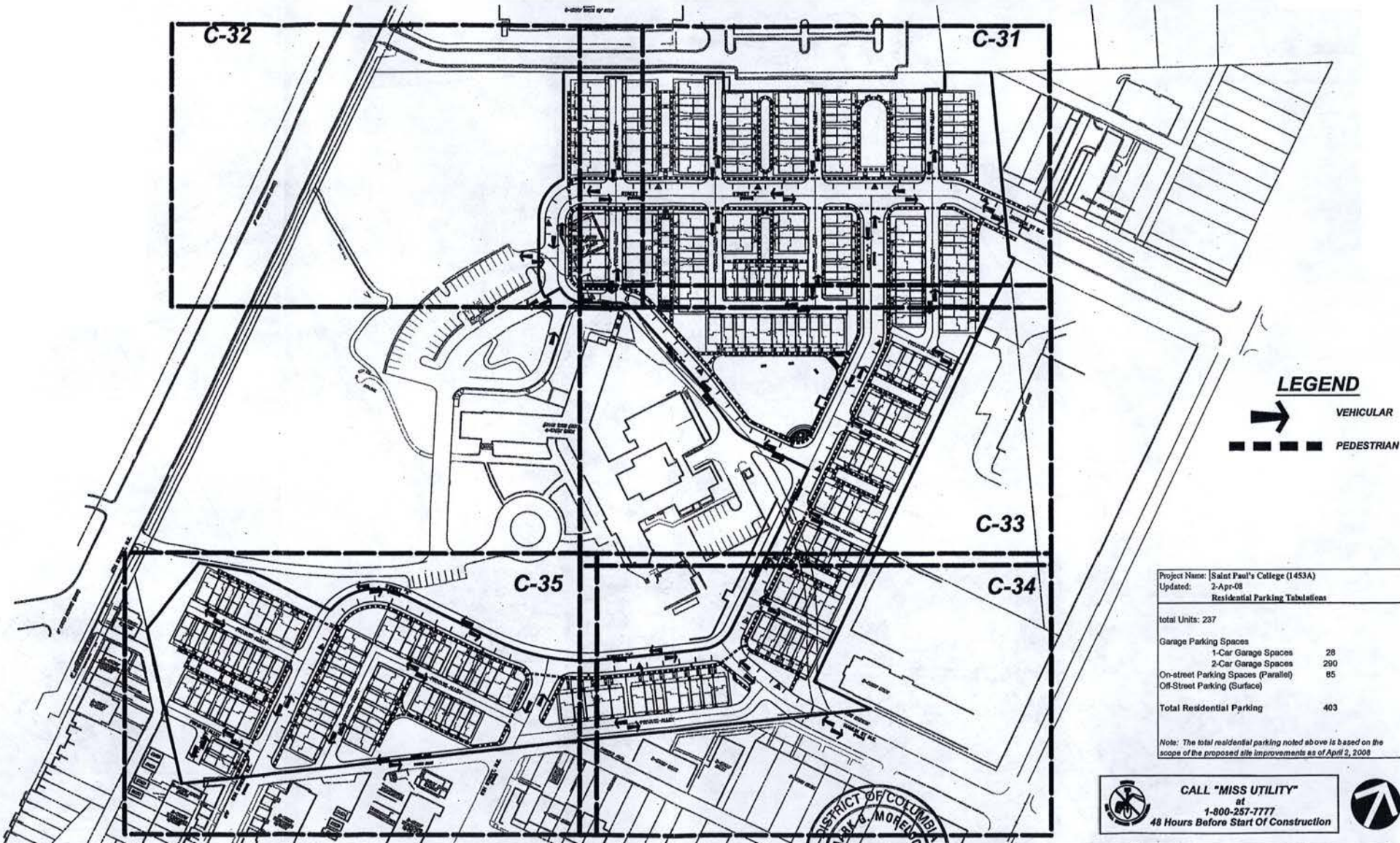

VIFA, INC.
 20031 Century Mall
 Germantown, MD 20876
 P: 301.814.4100
 F: 301.814.3883
 www.vifa.com


STUDIO 39
 1415 Connecticut Dr., Ste. 100-A
 Alexandria, VA 22304
 P: 703.713.6000
 F: 703.713.6000
 www.studio39.com

1453A



C-31



LEGEND

VEHICULAR

PEDESTRIAN

Project Name: Saint Paul's College (1453A)
 Updated: 3-Apr-08
 Residential Parking Tabulations

total Units: 237

Garage Parking Spaces

1-Car Garage Spaces	28
2-Car Garage Spaces	290

On-street Parking Spaces (Parallel) 85
 Off-Street Parking (Surface)

Total Residential Parking 403

Note: The total residential parking noted above is based on the scope of the proposed site improvements as of April 3, 2008

CALL "MISS UTILITY"
 at
 1-800-257-7777
 48 Hours Before Start Of Construction

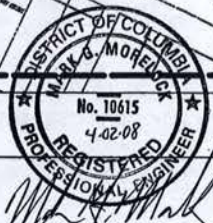
Saint Paul's College
 WASHINGTON, D.C.

OVERALL CIRCULATION PLAN

April 2, 2008



LAYOUT: C-32, Plotted By: Gurtler
 N:\1000-1500\1453\p002\preliminary\1453100_GROUPLAYOUT.dwg, - Apr 02, 2008 AT 9:02:35 PM

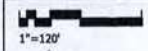


LESSARD GROUP INC.
 8511 Leesburg Pike, Ste. 700
 Vienna, VA 22186
 P: 703.765.5244
 F: 703.765.8708
 www.lessardgroup.com

VIFA
 VIFA, INC.
 32551 Century Blvd.
 Germantown, MD 20874
 P: 301.916.4100
 F: 301.916.2261
 www.vifa.com

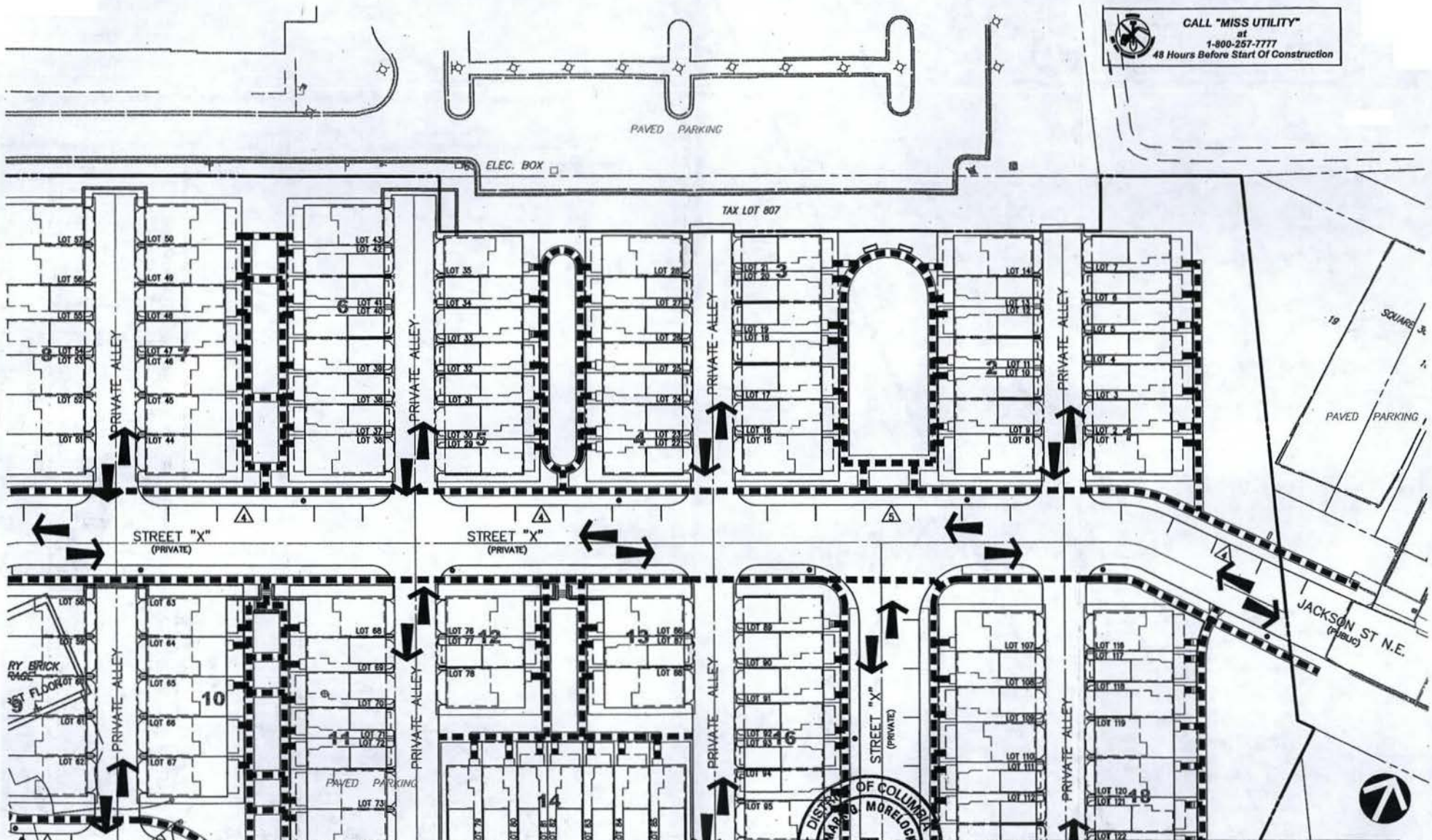
STUDIO 39
 6416 Greenleaf Dr., Ste. 100A
 Alexandria, VA 22304
 P: 703.718.6500
 F: 703.718.6503
 www.studio39.com

1453A



C-32

CALL "MISS UTILITY"
 81
 1-800-257-7777
 48 Hours Before Start Of Construction



Saint Paul's College
 WASHINGTON, D.C.
 THE NEIGHBORHOODS OF
EYA

DETAILED CIRCULATION PLAN

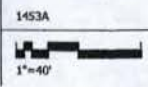
April 2, 2008

DISTRICT OF COLUMBIA
 MAP & MORELOCK
 No. 10615
 4.02.08
 REGISTERED PROFESSIONAL ENGINEER

LESSARD GROUP INC.
 8121 Leandry Pl. Ste. 700
 Vienna, VA 22181
 P: 703.760.8144
 F: 703.760.8158
 www.lessardgroup.com

VIFA, INC.
 2555 Century Blvd.
 Alexandria, VA 22304
 P: 703.816.4300
 F: 703.816.2262
 www.vfa.com

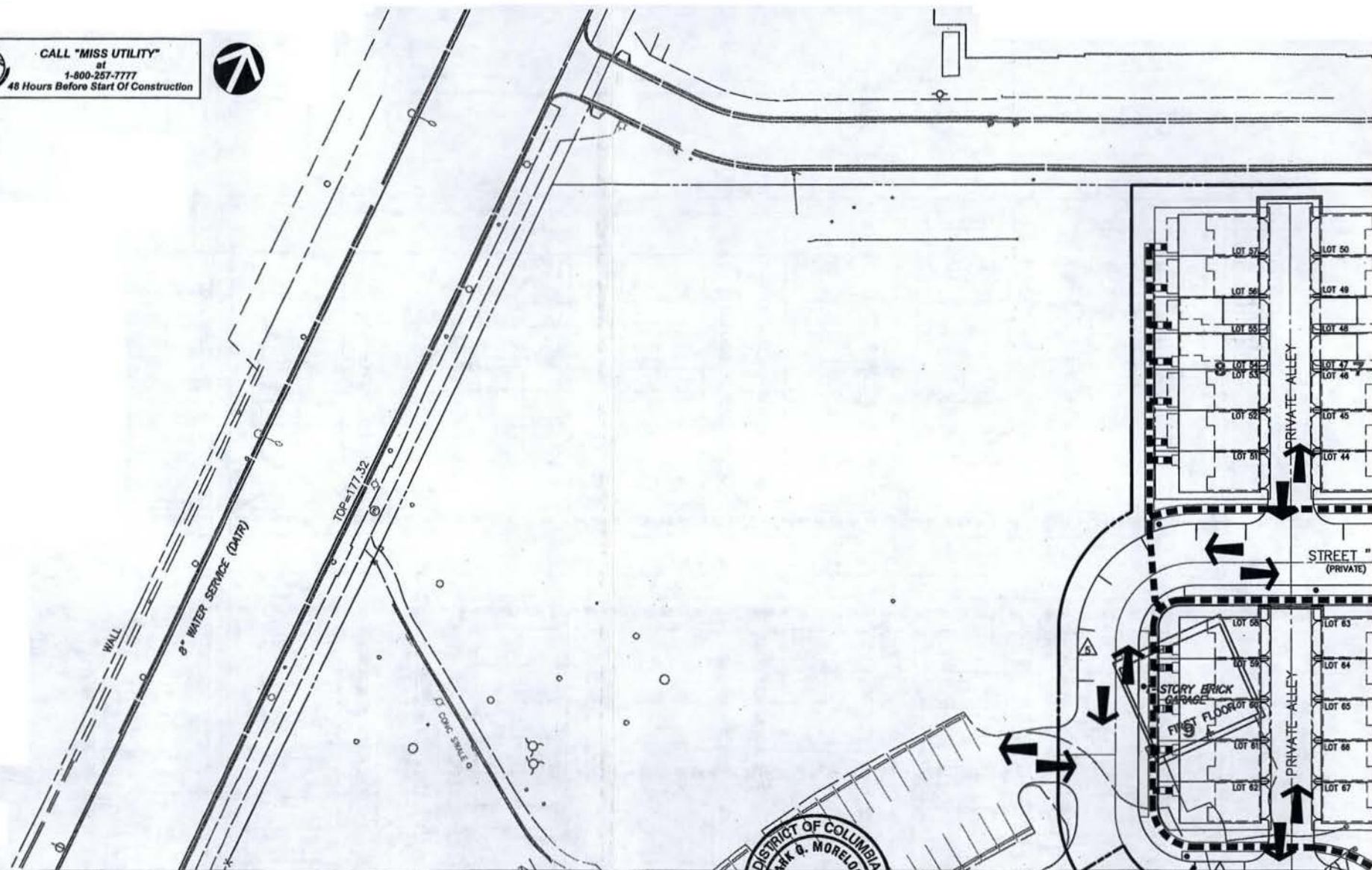
STUDIO 39
 6455 Greenleaf Dr. Ste. 100-A
 Alexandria, VA 22315
 P: 703.719.6500
 F: 703.719.6503
 www.studio39.com



C-33

LAYOUT: C-33, Plotted By: Quiler
 K:\V000-1500\1453\stud\ymlsbury\1453100_CIRCULATION.dwg -- Apr 02, 2008 AT 5:00:22 PM

CALL "MISS UTILITY"
at
1-800-257-7777
48 Hours Before Start Of Construction



Saint Paul's College
WASHINGTON, D.C.

DETAILED CIRCULATION PLAN

April 2, 2008



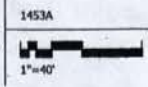
LAYOUT C-34, Plotted By: Ouster
s:\1500-1506\1437\cad\p\winbary\1433100_CIRCULATION.dwg -- Apr 02, 2008 AT 8:06:10 PM



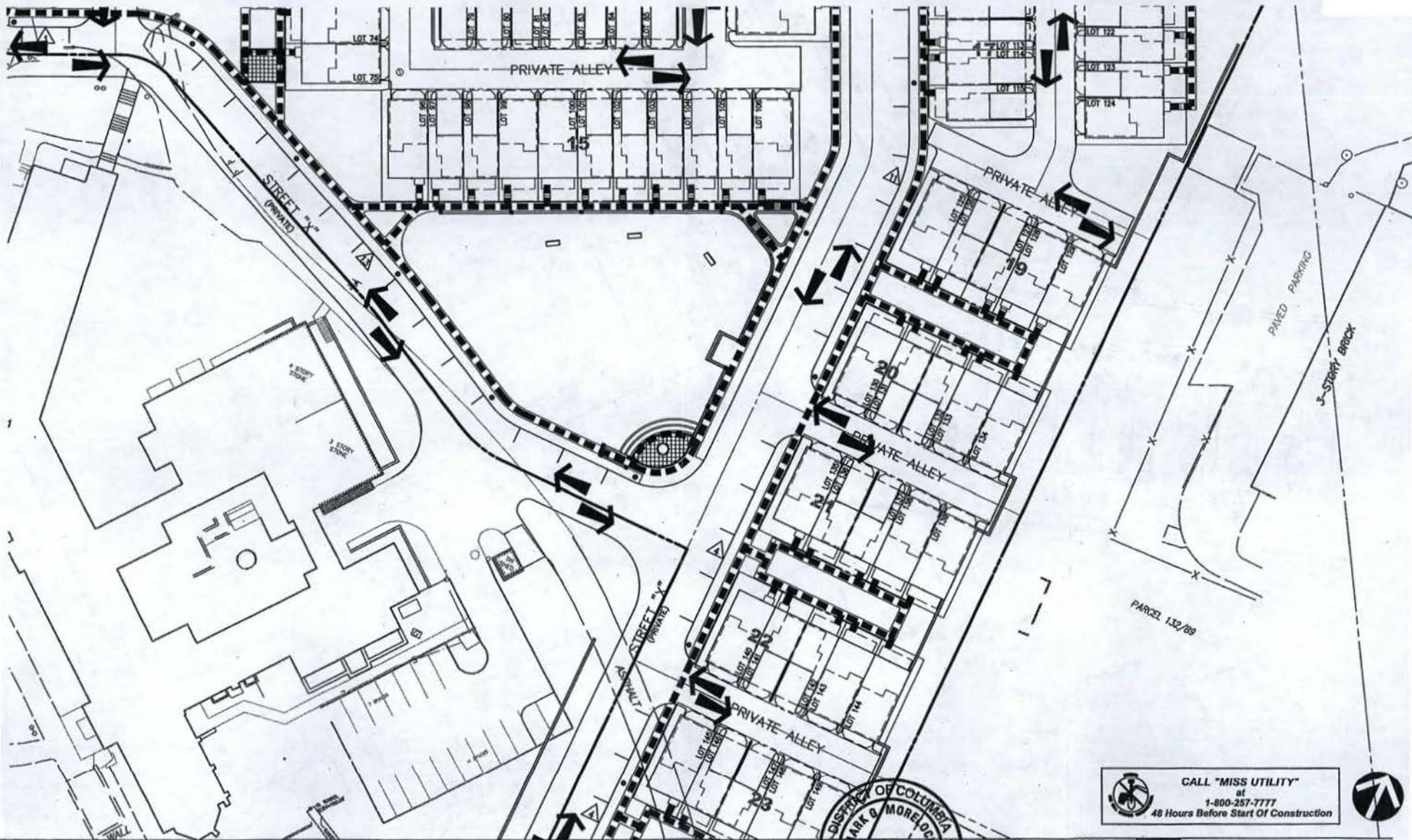
LESSARD GROUP INC.
2032 Landover Pike, Ste. 200
Vienna, VA 22183
P: 703.260.5144
F: 703.760.9158
www.lessardgroup.com

VIVA, INC.
2033 Century Blvd.
Crestwood, VA 22031
P: 703.634.4300
F: 703.634.2342
www.viva.com

STUDIO 39
4141 Grandview Dr., Ste. 100-A
Alexandria, VA 22310
P: 703.278.6900
www.studio39.com



C-34



Saint Paul's College
WASHINGTON, D.C.



LAYOUT: C-35, Plotted By: Dexter
6:\1000-1500\1431\cadd\p\studies\143106_DRCLAT0101.dwg, - Apr 02, 2008 AT 5:07:12 PM

DETAILED CIRCULATION PLAN

April 2, 2008



LESSARD GROUP INC.
2021 Century Pk. Dr. 700
Hunting, VA 22102
P: 703.790.0244
F: 703.790.0208
www.lessardgroup.com

VKA, INC.
2021 Century Pk. Dr. 700
Hunting, VA 22102
P: 703.790.0244
F: 703.790.0208
www.vka.com

STUDIO 39
6418 Greenleaf Dr. Ste. 100-A
Arlington, VA 22204
P: 703.719.4000
F: 703.719.4002
www.studio39.com

1453A

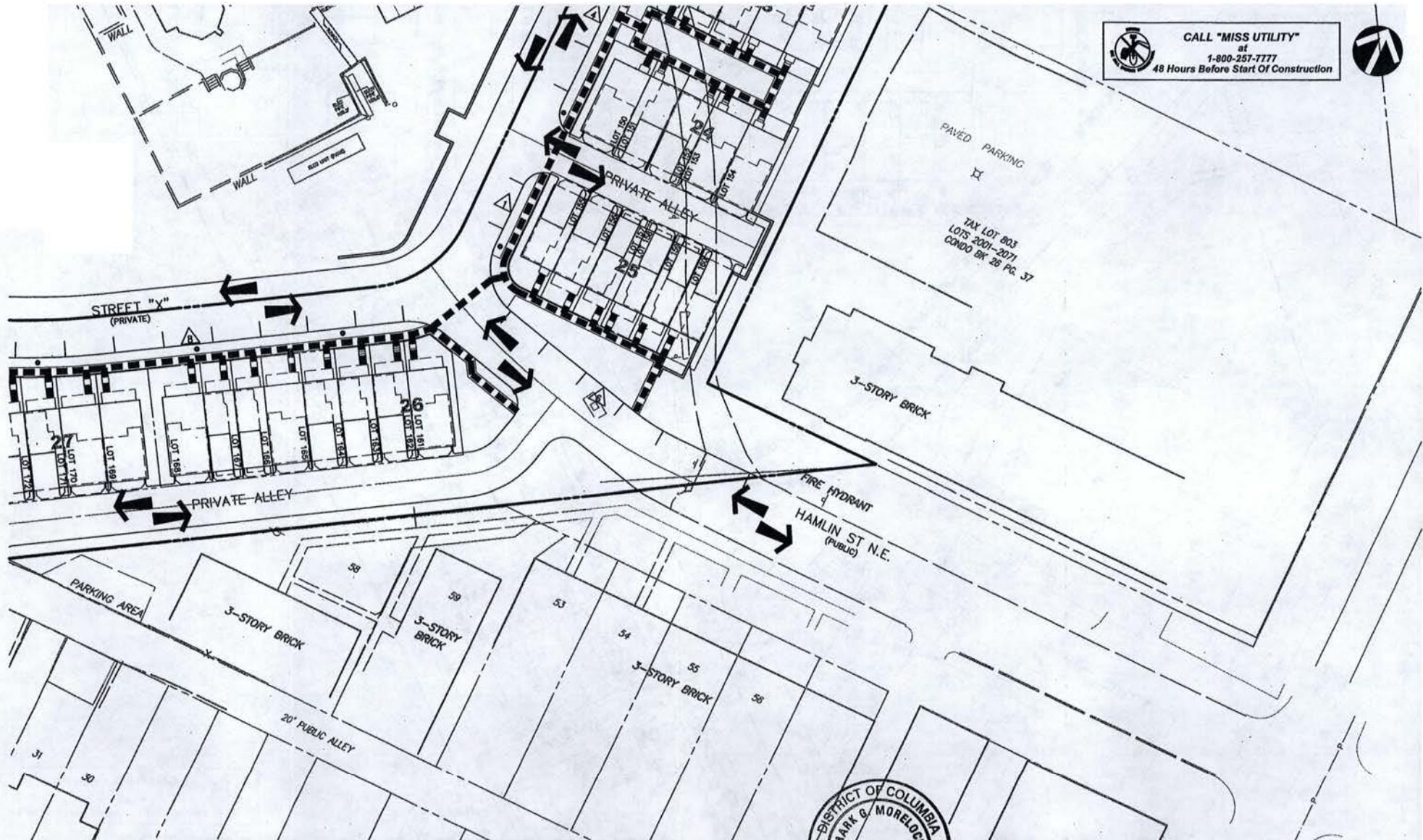


C-35

CALL "MISS UTILITY"
at
1-800-257-7777
48 Hours Before Start Of Construction



CALL "MISS UTILITY"
 at
 1-800-257-7777
 48 Hours Before Start Of Construction



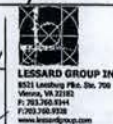
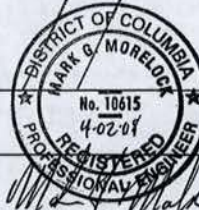
Saint Paul's College
 WASHINGTON, D.C.

DETAILED CIRCULATION PLAN

April 2, 2008



LAYOUT: C-36, Plotted By: Quarter
 K:\1000-1007\1453\p\c\pr\stairway\1453106_DRAWLAYOUT.dwg, Apr 02, 2008 AT 5:07:48 PM



1453A



C-36

CALL "MISS UTILITY"
at
1-800-257-7777
48 Hours Before Start Of Construction



Saint Paul's College
WASHINGTON, D.C.



LAYOUT: C-37, Plotted By: Quaker
K:\1000-1000\1457\p04\graphics\1453100_CIRCULATION.dwg - Apr 02, 2008 at 5:08:34 PM

DETAILED CIRCULATION PLAN

April 2, 2008

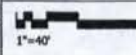


LESSARD GROUP INC.
6025 Leesboro Pike, Ste. 700
Norfolk, VA 23502
P: 753.208.5547
F: 753.265.8328
www.lessardgroup.com

VEKA, INC.
28255 Century Blvd.
Greenwood, VA 22024
P: 703.818.6300
F: 703.818.6302
www.veka.com

STUDIO 39
4403 Greenleaf Dr., Ste. 100-A
Alexandria, VA 22304
P: 703.715.6000
F: 703.715.6002
www.studio39.com

1453A



C-37

Project Name:	Saint Paul's College (1453A)	
Date:	2-Apr-08	
Area:	DA-1 (SWM-10)	
Inputs:		
Depth of First Flush:		
Roofs and Sidewalks	0.30	Inches
Parking Lots and Roadways	0.50	Inches
Rain Intensity		
2 Year	5.28	In/Hr
15 Year	7.56	In/Hr
C Factor		
Impervious	0.90	
Pervious	0.35	
Enter Site Details (Post Developed Values)		
Impervious Area:	0.38	*Roofs and Sidewalks
	0.00	*Parking Lots and Roadways
Pervious Area:	0.04	
Total Site Area:	0.42	
CSO Area (yes or no)	yes	
Determine Site Impervious Factor:		
C=	0.85	
Determine Flow Rates for Q2(pre) and Q15(post)		
Q2(pre)=	0.77616	CFS
Q15(post)=	2.85768	CFS
Determine Quantity and Quality Control Volumes		
V _{quality} =	413.62	CF
V _{quantity} =	760.57	CF
Determine Flow Rate for First Flush (Qff)		
Qff=	0.1026	CFS
Determine Number of Cartridges Required (N)		
N=	3.109091	Use 4 Cartridges
Determine Rate of Release (Qr) for the system at 50% Clogged		
Qr=	0.096	CFS
Determine Time of Discharge (Td)		
Td=	3.285227	Hr

Project Name:	Saint Paul's College (1453A)	
Date:	2-Apr-08	
Area:	DA-2 (SWM-34)	
Inputs:		
Depth of First Flush:		
Roofs and Sidewalks	0.30	Inches
Parking Lots and Roadways	0.50	Inches
Rain Intensity		
2 Year	5.28	In/Hr
15 Year	7.56	In/Hr
C Factor		
Impervious	0.90	
Pervious	0.35	
Enter Site Details (Post Developed Values)		
Impervious Area:	0.59	*Roofs and Sidewalks
	0.00	*Parking Lots and Roadways
Pervious Area:	0.06	
Total Site Area:	0.65	
CSO Area (yes or no)	yes	
Determine Site Impervious Factor:		
C=	0.85	
Determine Flow Rates for Q2(pre) and Q15(post)		
Q2(pre)=	1.2012	CFS
Q15(post)=	4.4226	CFS
Determine Quantity and Quality Control Volumes		
V _{quality} =	642.51	CF
V _{quantity} =	1208.025	CF
Determine Flow Rate for First Flush (Qff)		
Qff=	0.1593	CFS
Determine Number of Cartridges Required (N)		
N=	4.827273	Use 5 Cartridges
Determine Rate of Release (Qr) for the system at 50% Clogged		
Qr=	0.0825	CFS
Determine Time of Discharge (Td)		
Td=	4.067424	Hr

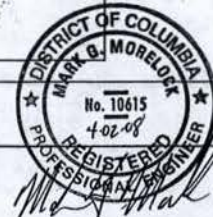
Project Name:	Saint Paul's College (1453A)	
Date:	2-Apr-08	
Area:	DA-3 (SWM-80)	
Inputs:		
Depth of First Flush:		
Roofs and Sidewalks	0.30	Inches
Parking Lots and Roadways	0.50	Inches
Rain Intensity		
2 Year	5.28	In/Hr
15 Year	7.56	In/Hr
C Factor		
Impervious	0.90	
Pervious	0.35	
Enter Site Details (Post Developed Values)		
Impervious Area:	2.12	*Roofs and Sidewalks
	0.00	*Parking Lots and Roadways
Pervious Area:	0.23	
Total Site Area:	2.35	
CSO Area (yes or no)	yes	
Determine Site Impervious Factor:		
C=	0.85	
Determine Flow Rates for Q2(pre) and Q15(post)		
Q2(pre)=	4.3428	CFS
Q15(post)=	15.8894	CFS
Determine Quantity and Quality Control Volumes		
V _{quality} =	2308.68	CF
V _{quantity} =	4367.475	CF
Determine Flow Rate for First Flush (Qff)		
Qff=	0.5724	CFS
Determine Number of Cartridges Required (N)		
N=	17.34545	Use 18 Cartridges
Determine Rate of Release (Qr) for the system at 50% Clogged		
Qr=	0.297	CFS
Determine Time of Discharge (Td)		
Td=	4.084806	Hr

Saint Paul's College
WASHINGTON, D.C.



SITE TABULATIONS

April 2, 2008



LESSARD GROUP INC.
8511 Leesburg Pike, Ste. 750
Vienna, VA 22186
P: 703.760.8348
F: 703.760.8348
www.lessard-group.com



VVA, INC.
35433 Century Blvd.
Chesapeake, MD 20761
P: 301.816.4100
F: 301.816.2862
www.vva.com



STUDIO 39
6418 Greenway Dr., Ste. 100-A
Arlington, VA 22204
P: 703.218.6500
F: 703.218.6500
www.studio39.com

1453A



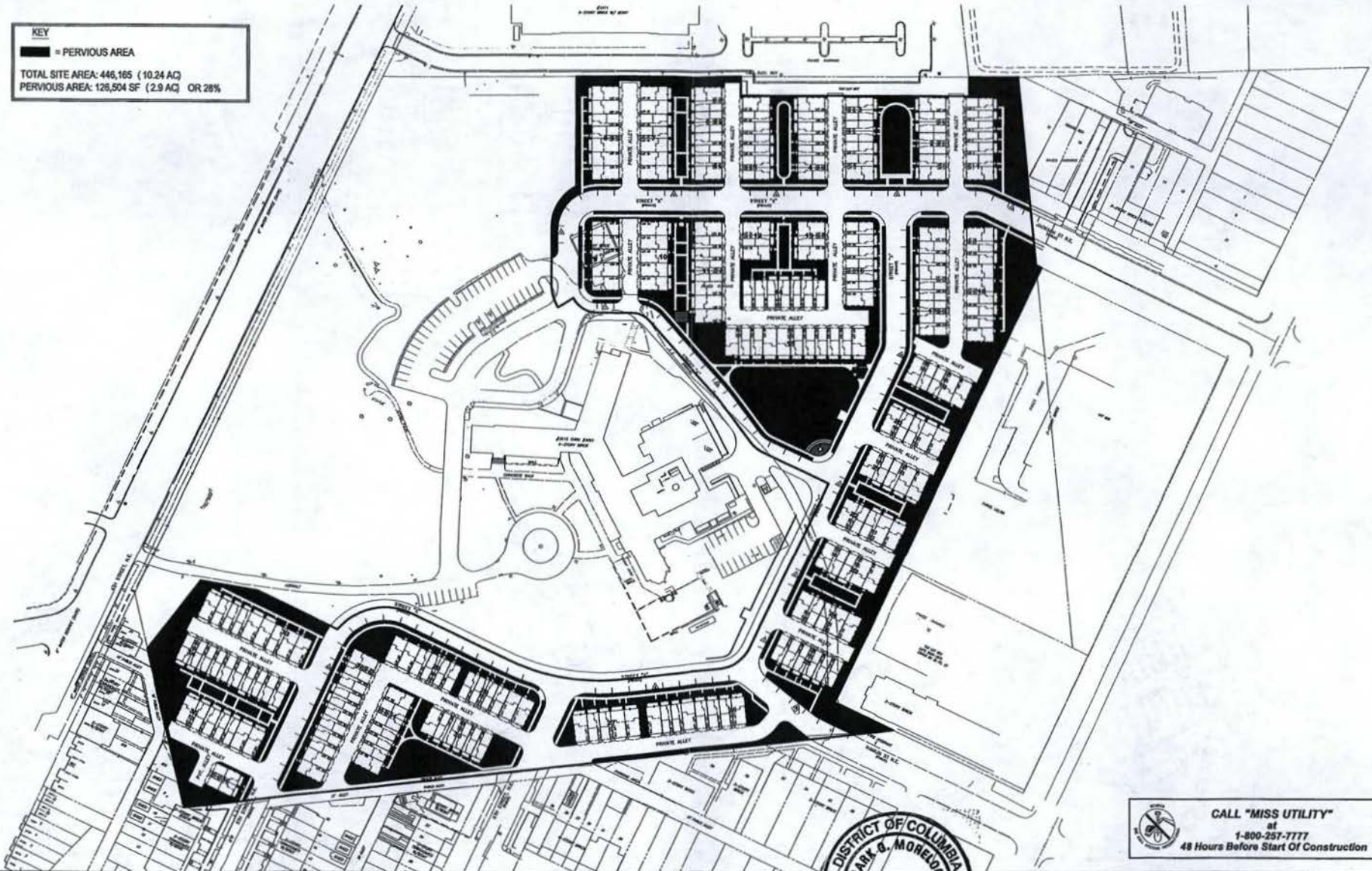
NTS

Project Name:	Saint Paul's College (1453A)	
Date:	2-Apr-08	
Area:	DA-4 (SWM-142)	
Inputs:		
Depth of First Flush:		
Roofs and Sidewalks	0.30	Inches
Parking Lots and Roadways	0.50	Inches
Rain Intensity		
2 Year	5.28	in/hr
15 Year	7.66	in/hr
C Factor		
Impervious	0.90	
Pervious	0.35	
Enter Site Details (Post Developed Values)		
Impervious Area:	2.09	*Roofs and Sidewalks
	0.00	*Parking Lots and Roadways
Pervious Area:	0.23	
Total Site Area:	2.32	
CSO Area (yes or no)	yes	
Determine Site Impervious Factor:		
C=	0.65	
Determine Flow Rates for Q2(pre) and Q15(post)		
Q2(pre)=	4.28736	CFS
Q15(post)=	15.78528	CFS
Determine Quantity and Quality Control Volumes		
Vquality=	2276.01	CF
Vquantity=	4311.72	CF
Determine Flow Rate for First Flush (Qff)		
Qff=	0.5643	CFS
Determine Number of Cartridges Required (N)		
N=	17.1	Use 18 Cartridges
Determine Rate of Release (Qr) for the system at 50% Clogged		
Qr=	0.297	CFS
Determine Time of Discharge (Td)		
Td=	4.03266	Hr

Project Name:	Saint Paul's College (1453A)	
Date:	2-Apr-08	
Area:	DA-5 (SWM-188)	
Inputs:		
Depth of First Flush:		
Roofs and Sidewalks	0.30	Inches
Parking Lots and Roadways	0.50	Inches
Rain Intensity		
2 Year	5.28	in/hr
15 Year	7.66	in/hr
C Factor		
Impervious	0.90	
Pervious	0.35	
Enter Site Details (Post Developed Values)		
Impervious Area:	0.93	*Roofs and Sidewalks
	0.00	*Parking Lots and Roadways
Pervious Area:	0.10	
Total Site Area:	1.03	
CSO Area (yes or no)	yes	
Determine Site Impervious Factor:		
C=	0.85	
Determine Flow Rates for Q2(pre) and Q15(post)		
Q2(pre)=	1.90344	CFS
Q15(post)=	7.00812	CFS
Determine Quantity and Quality Control Volumes		
Vquality=	1012.77	CF
Vquantity=	1814.255	CF
Determine Flow Rate for First Flush (Qff)		
Qff=	0.2511	CFS
Determine Number of Cartridges Required (N)		
N=	7.609091	Use 8 Cartridges
Determine Rate of Release (Qr) for the system at 50% Clogged		
Qr=	0.132	CFS
Determine Time of Discharge (Td)		
Td=	4.028314	Hr



KEY
 ■ = PERVIOUS AREA
 TOTAL SITE AREA: 446,165 (10.24 AC)
 PERVIOUS AREA: 126,504 SF (2.9 AC) OR 28%



CALL "MISS UTILITY"
 at
 1-800-257-7777
 48 Hours Before Start Of Construction

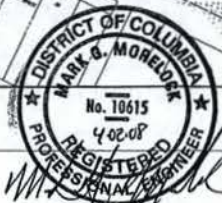


Saint Paul's College
 WASHINGTON, D.C.



PERVIOUS AREA PLAN

April 2, 2008



LESSARD GROUP INC.
 8231 Leesburg Pkwy. Ste. 700
 Manassas, VA 22110
 P: 703.790.8244
 F: 703.790.8230

VKA, INC.
 25225 Corbury Blvd.
 Centreville, MD 20104
 P: 703.886.4200
 F: 703.886.2200

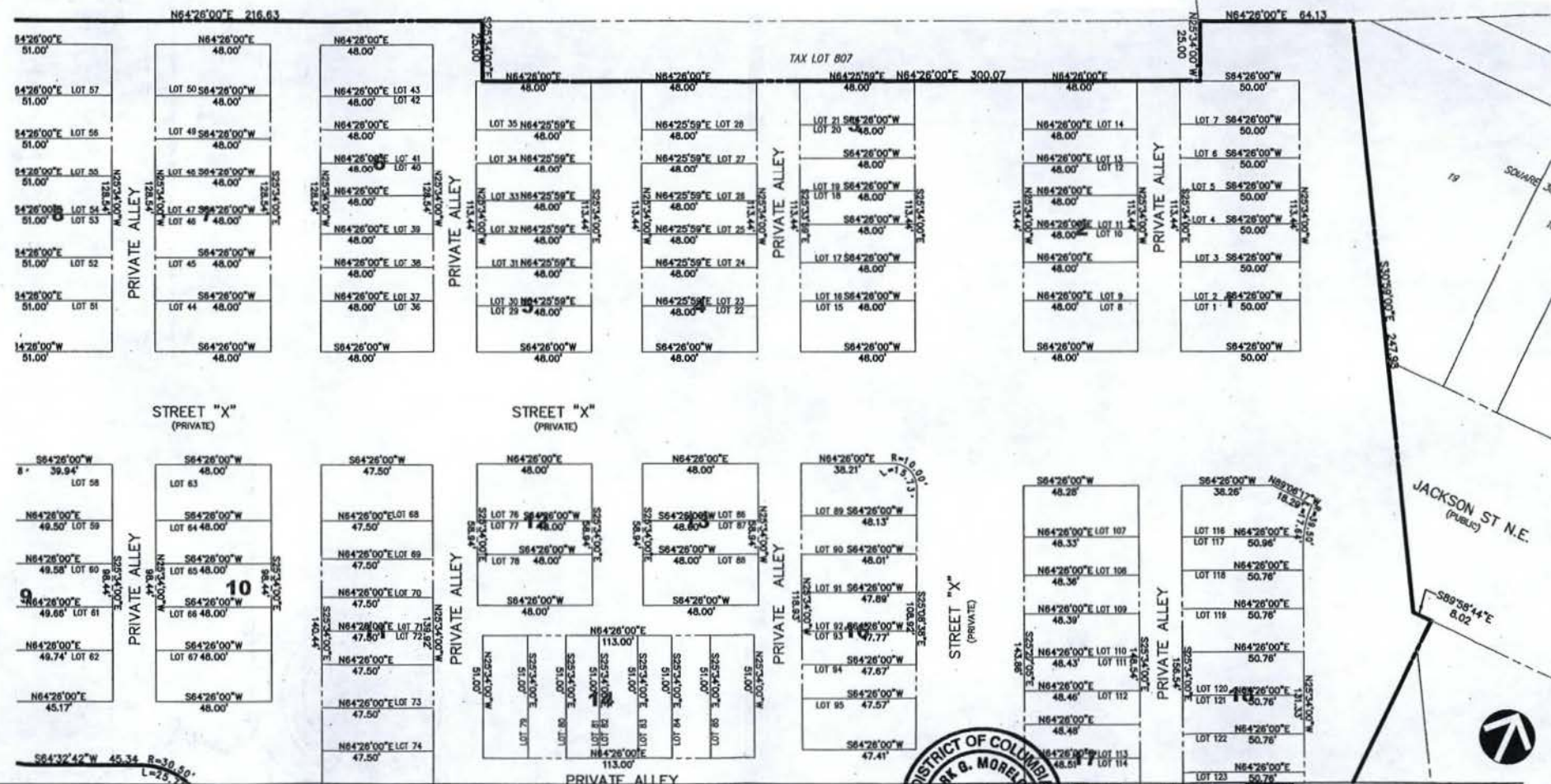
STUDIO 39
 8405 Greenidge Dr., Ste. 100-A
 Alexandria, VA 22310
 P: 703.718.0000
 F: 703.718.0000

1453A



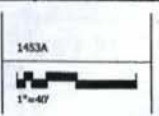
C-40

CALL "MISS UTILITY"
at
1-800-257-7777
48 Hours Before Start Of Construction



Saint Paul's College
WASHINGTON, D.C.

DETAILED THEORETICAL SUBDIVISION PLAN



C-43



1/2003 D-03, Revised by: bade
R:\009-100\102\plan\preliminary\020301.dwg - Apr 01, 2008 At 3:26:12 PM

April 2, 2008

CALL "MISS UTILITY"
at
1-800-257-7777
48 Hours Before Start Of Construction



TAX LOT 803
LOTS 2001-2071
CONDO BK 26 PG. 37

