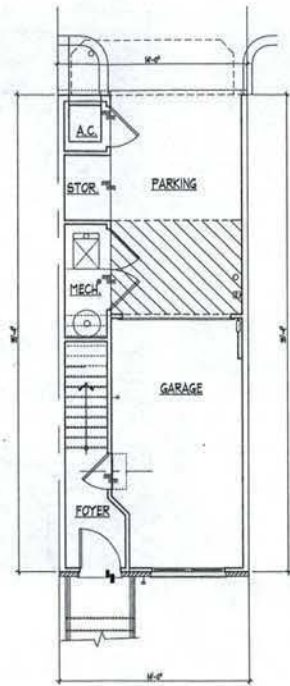
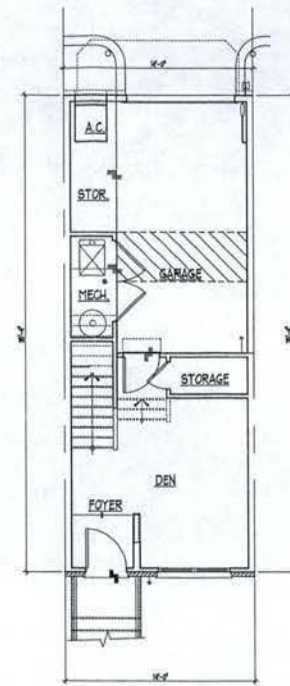


1
A-100
SCALE: EY1166A-100



2
A-100
SCALE: EY1166A-100



3
A-100
SCALE: EY1166A-100

Saint Paul's College
WASHINGTON, D.C.



FLOOR PLANS

UNIT TYPE 'A'
April 02, 2008



LESARD GROUP INC.
8023 Lomborg Pike, Ste. 700
Vienna, VA 22182
P: 703.745.2914
F: 703.765.5125
www.lesardgroup.com



VIKA, INC.
2022 Century Blvd.
Alexandria, VA 22304
P: 703.719.8800
F: 703.719.8802
www.vika.com



STUDIO 39
6446 Greenway Blvd.
Alexandria, VA 22304
P: 703.719.8800
F: 703.719.8802
www.studio39.com

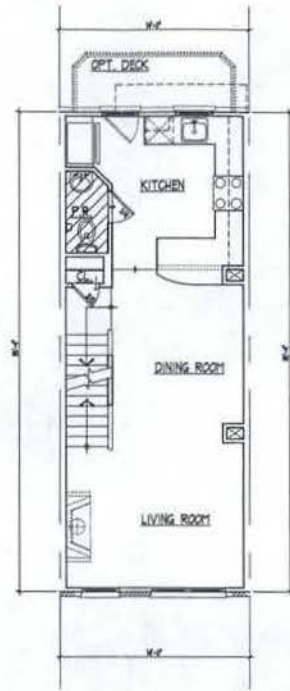
EYA-146a.00

ZONING COMMISSION
District of Columbia

CASE NO.07-27

EXHIBIT NO.17A2

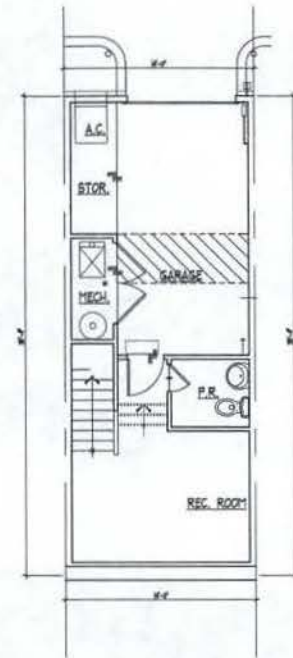
A-100



3 Second Floor Plan
SCALE
EYI/04a.02



2 Second Floor Plan (EB)
SCALE
EYI/04a.02



1 Alt. Ground Floor Plan (EB)
SCALE
EYI/04a.02

Saint Paul's College
WASHINGTON, D.C.



FLOOR PLANS

UNIT TYPE 'A'
April 02, 2008



LESSARD GROUP INC.
8525 Landburg Pike, Ste. 700
Spring, VA 22152
P: 703.750.8144
F: 703.750.9329
www.lessardgroup.com



VIKI INC.
3001 Century Blvd.
Charlottesville, VA 22904
P: 803.818.4200
F: 803.818.2162
www.viki.com

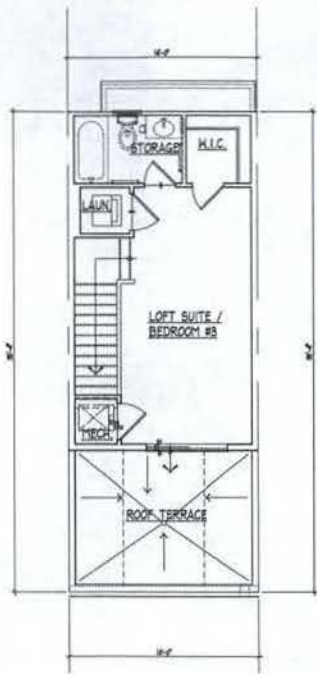


STUDIO 39
4418 Groveside Dr., Ste. 300-A
Arlington, VA 22209
P: 703.718.8200
F: 703.718.8203
www.studio39.com

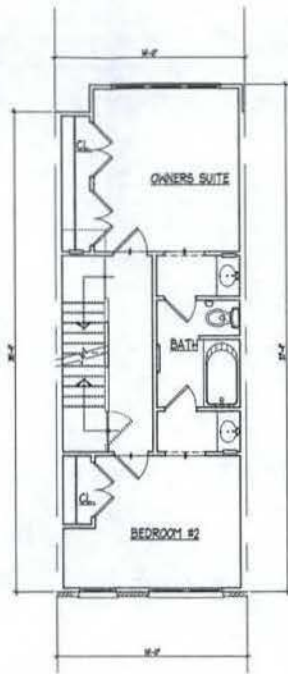
EYA.146a.00



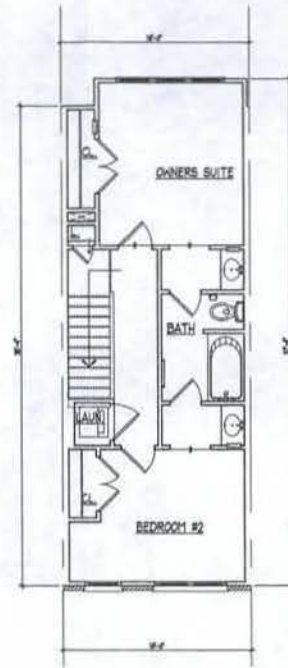
A-101



3
A-102
Opt. Loft Floor Plan
SCALE
EYVA-145a-102



2
A-102
Opt. Third Floor Plan
SCALE
EYVA-145a-102



1
A-102
Third Floor Plan
SCALE
EYVA-145a-102

Saint Paul's College
WASHINGTON, D.C.



FLOOR PLANS

UNIT TYPE 'A'
April 02, 2008



LESSARD GROUP INC.
8033 Leesburg Pike, Ste. 700
Vienna, VA 22181
P: 703.765.8294
F: 703.765.8728
www.lessardgroup.com



VIKA INC.
2801 Canyon Blvd.
Charlottesville, VA 22974
P: 703.725.4200
F: 703.725.2252
www.vika.com



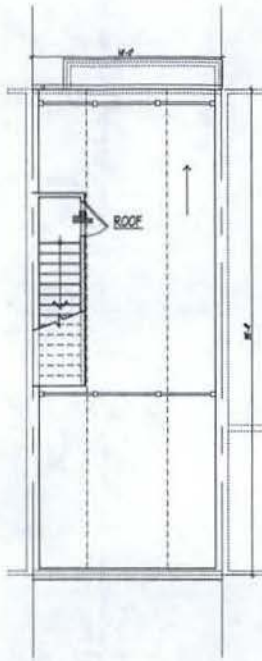
STUDIO 39
2824 Greenbush St., Ste. 100-A
Alexandria, VA 22311
P: 703.725.8000
F: 703.725.8000
www.studio39.com

EYA.145a.00

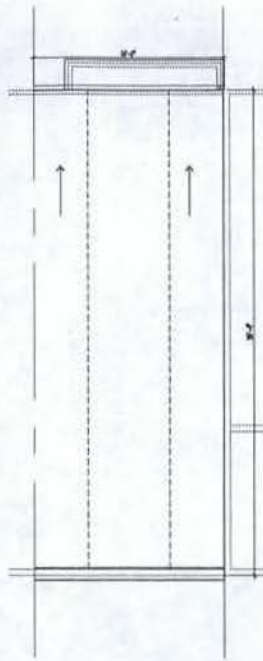


1/4" = 1'-0" EYVA-145a-102

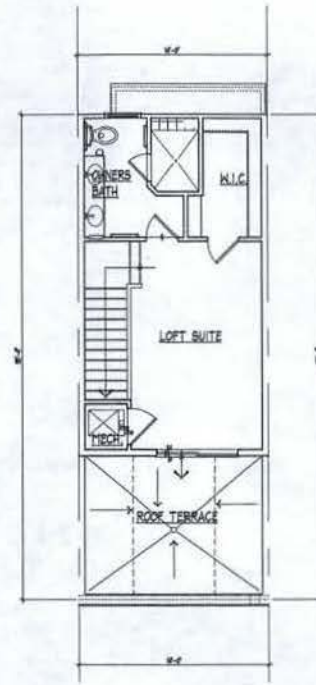
A-102



3 Opt Roof Plan
SCALE EYA146A-101



2 Roof Plan
SCALE EYA146A-102



1 Opt Loft Floor Plan -1
SCALE EYA146A-103

Saint Paul's College
WASHINGTON, D.C.



FLOOR PLANS

UNIT TYPE 'A'
April 02, 2008



LESSARD GROUP INC.
8932 Leesburg Pkwy. Ste. 705
Herndon, VA 22033
P: 703.760.8244
F: 703.760.8328
www.lggrp.com



VIXA INC.
20211 Century Blvd.
Greenbelt, MD 20747
F: 301.635.4200
F: 301.635.2262
www.vixainc.com

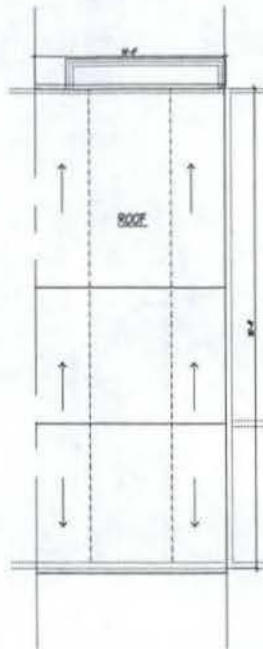


STUDIO 39
8432 Oxonshire Dr. Ste. 100-A
Alexandria, VA 22318
P: 703.713.8300
F: 703.713.8802
www.studio39.com

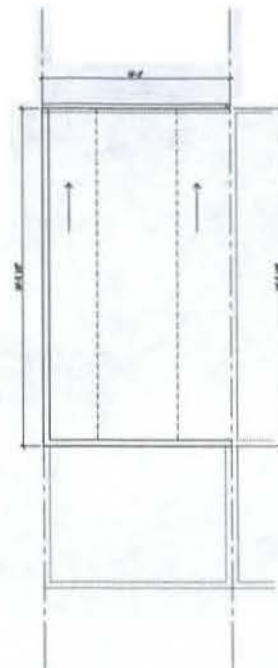
EYA.146a.00



A-103



2 Roof Plan Elev. #5
SCALE: 1/4"=1'-0"



1 Opt. Roof Plan w/ Loft
SCALE: 1/4"=1'-0"

Saint Paul's College
WASHINGTON, D.C.



FLOOR PLANS

UNIT TYPE 'A'
April 02, 2006



LESSARD GROUP INC.
8511 Leesboro Pike, Ste 700
Hyattsville, VA 22184
P: 703.762.8344
F: 703.762.8329
www.lessardgroup.com



VIKA INC.
2025 Century Blvd.
Chantilly, VA 20151
P: 703.814.4200
F: 703.814.4242
www.vika.com



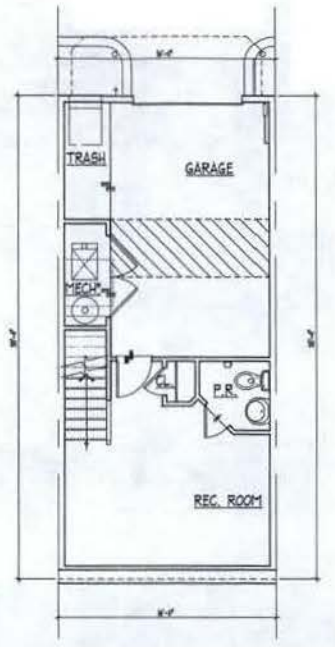
STUDIO 39
6145 Brimley Rd., Ste. 100-A
Arlington, VA 22202
P: 703.714.8300
F: 703.714.8303
www.studio39.com

EYA 1-46e.00

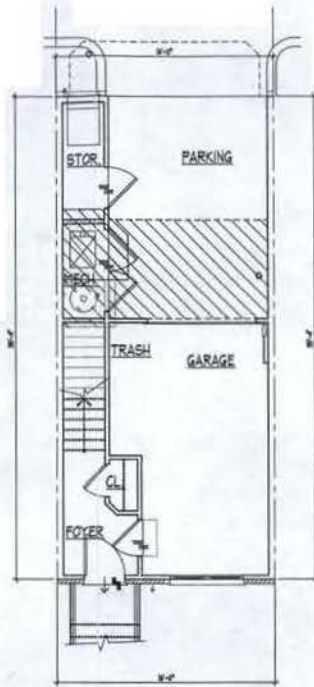


1/4" = 1'-0" EYA146aA-04

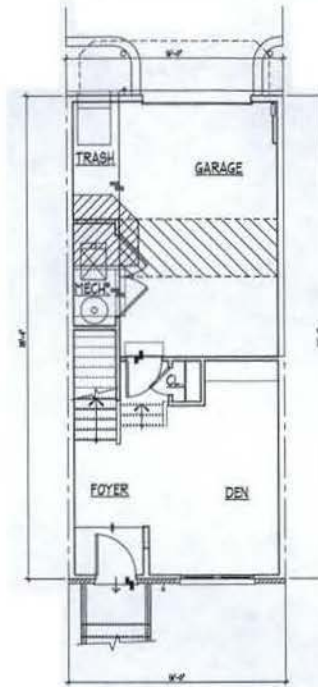
A-104



3 English Basement Floor Plan
SCALE: 1/4" = 1'-0"
EY1416A-110



2 Opt Ground Floor Plan
SCALE: 1/4" = 1'-0"
EY1416A-110



1 Ground Floor Plan
SCALE: 1/4" = 1'-0"
EY1416A-110

Saint Paul's College
WASHINGTON, D.C.

THE NEIGHBORHOODS OF
EYA

FLOOR PLANS

UNIT TYPE 'B'

April 02, 2008



LENSARD GROUP INC.
8721 Leesburg Hwy, Ste. 700
Vienna, VA 22182
P: 703.785.8244
F: 703.785.8248
www.lensardgroup.com



VIVA INC.
2822 Carlyle Blvd
Sterling, VA 20154
P: 703.612.6900
F: 703.612.6262
www.vivainc.com

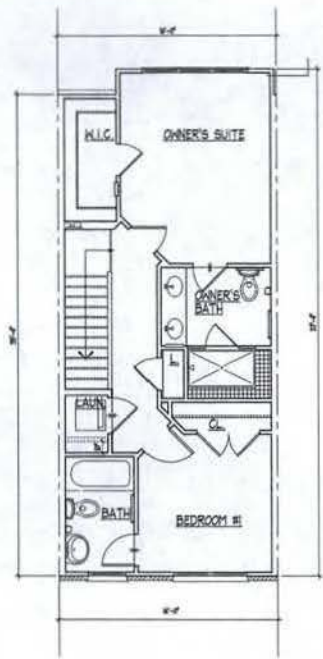


STUDIO 39
8023 Greenleaf Dr., Ste. 101-A
Arlington, VA 22201
P: 703.713.8302
F: 703.713.8303
www.studio39.com

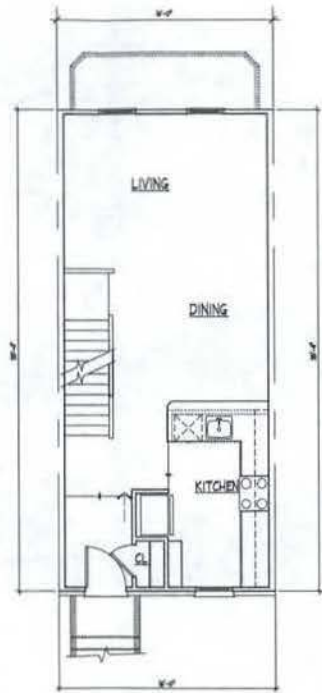
EYA-146a.00

1/4" = 1'-0" EY1416A-110

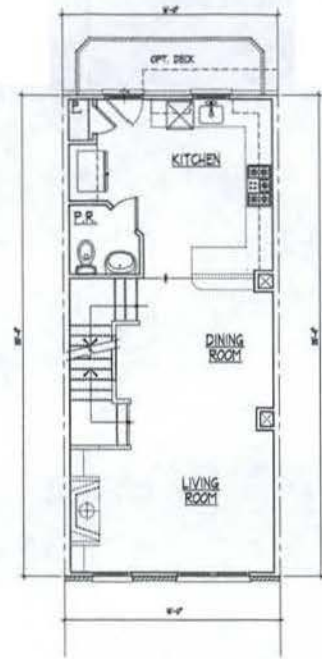
A-110



3
A-111
Third Floor Plan
SCALE: 1/8"=1'-0"
EYV146a.111



2
A-111
Second Floor Plan (EB)
SCALE: 1/8"=1'-0"
EYV146a.111



1
A-111
Second Floor Plan (STD)
SCALE: 1/8"=1'-0"
EYV146a.111

Saint Paul's College
WASHINGTON, D.C.



FLOOR PLANS
UNIT TYPE 'B'
April 02, 2008



LESSARD GROUP INC.
8721 Leesboro Pk. Ste. 700
Vienna, VA 22184
P: 703.790.8314
F: 703.790.8338
www.lessardgroup.com



VJKA, INC.
20201 Denby Ave.
Dorchester, MA 01904
P: 508.518.4300
F: 508.518.2382
www.vjka.com

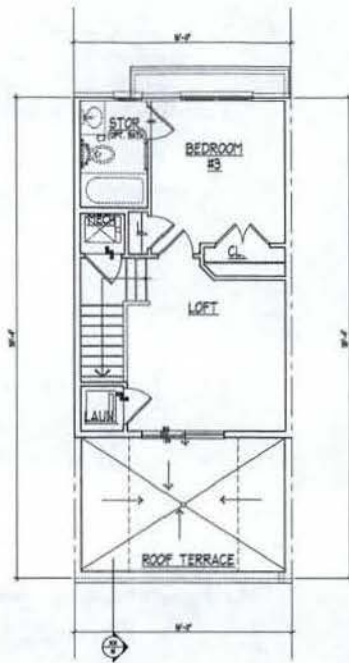


STUDIO 39
4144 Greenbush Dr. Ste. 100-A
Annandale, VA 22010
P: 703.718.4500
F: 703.718.4502
www.studio39.com

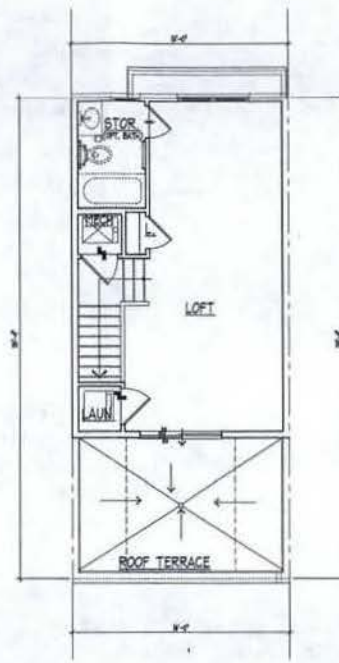
EYA.146a.00



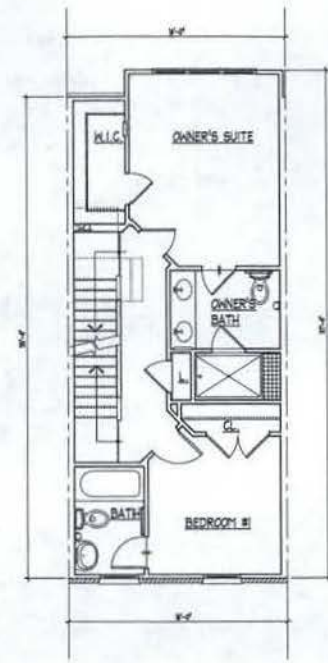
A-111



3 Opt. Loft Plan
SCALE
01/10/08-112



4 Loft Floor Plan
SCALE
01/10/08-112



1 Third Floor Plan (EB)
SCALE
01/10/08-112

Saint Paul's College
WASHINGTON, D.C.



FLOOR PLANS
UNIT TYPE 'B'

April 02, 2008



LESSARD GROUP INC.
8321 Leesburg Pike, Ste. 700
Farmingdale, NY 11737
P: 762.765.8194
F: 762.765.8128
www.lessardgroup.com



VEKA, INC.
30231 Century Blvd.
Glenview, IL 60024
P: 847.418.4100
F: 847.418.4448
www.veka.com

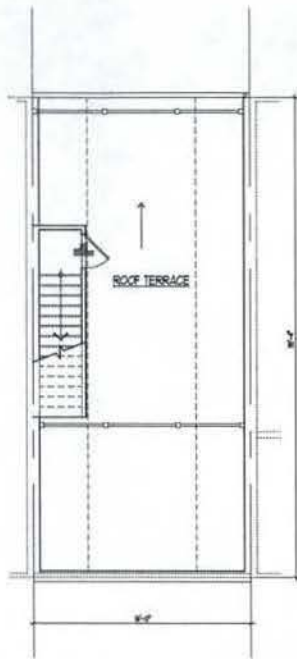


STUDIO 39
8433 Greenleaf Dr., Ste. 103A
Alexandria, VA 22304
P: 703.719.8900
F: 703.719.8901
www.studio39.com

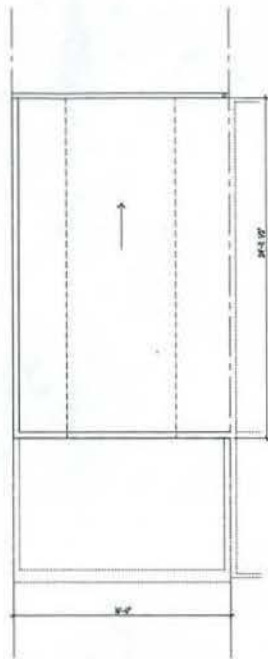
EYA.146a.00



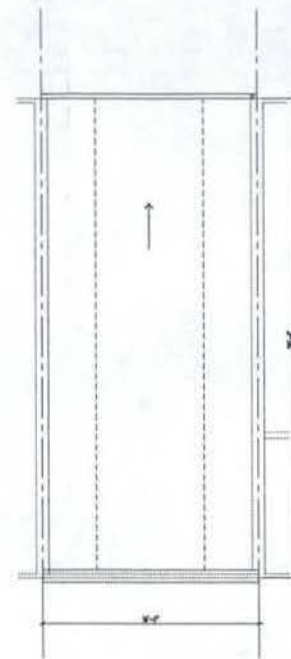
A-112



1
A-113
SCALE: 1/4"=1'-0"
EYA 146a.113



1
A-113
SCALE: 1/4"=1'-0"
EYA 146a.113



1
A-113
SCALE: 1/4"=1'-0"
EYA 146a.113

Saint Paul's College
WASHINGTON, D.C.



FLOOR PLANS

UNIT TYPE 'B'
April 02, 2008



LESSARD GROUP INC.
8323 Landburg Pike, Box 700
Vienna, VA 22180
P: 703.760.8344
F: 703.760.8338
www.lessardgroup.com



VIKI INC.
20015 Century Blvd
Centersville, VA 20184
P: 703.338.4100
F: 703.338.2362
www.viki.com

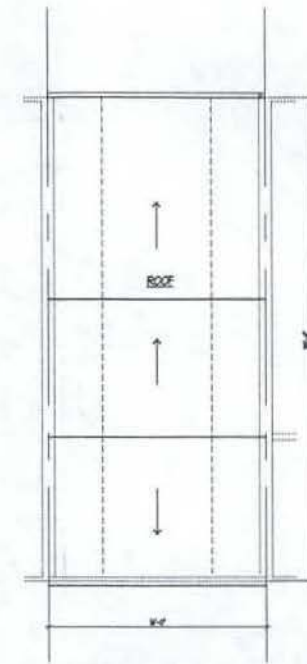


STUDIO 39
3424 Greenway Dr., Box 100-A
Knoxville, VA 22315
P: 703.218.6500
F: 703.218.6502
www.studio39.com

EYA.146a.00



A-113



1
A-114
Opt Roof Plan @ Elev. #5
SCALE
EYAS46A-114

Saint Paul's College
WASHINGTON, D.C.



FLOOR PLANS
UNIT TYPE 'B'
April 02, 2008



LESSARD GROUP INC.
8331 Leesburg Pike, Ste. 705
Vienna, VA 22181
P: 703.766.8284
F: 703.796.8238
www.lessardgroup.com

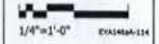


VISA INC.
2021 Century Blvd
Dumfries, VA 22024
P: 703.718.6200
F: 703.718.6203
www.visa.com

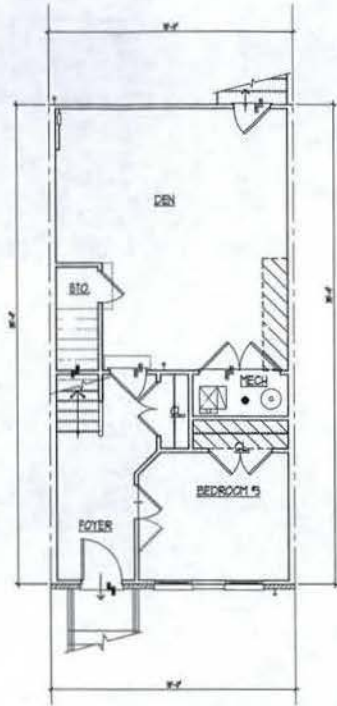


STUDIO 39
6436 Greenbale Dr., Ste. 200-A
Arlington, VA 22210
P: 703.718.6200
F: 703.718.6203
www.studio39.com

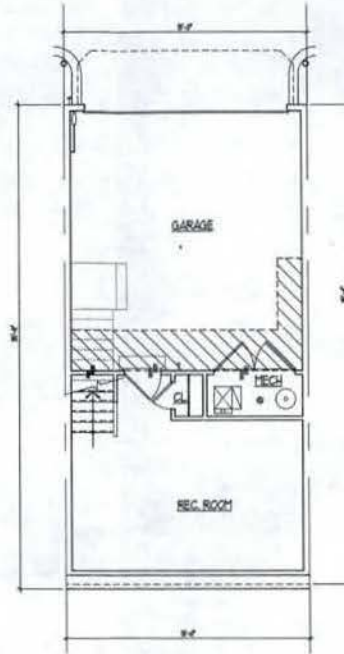
EYA.146a.00



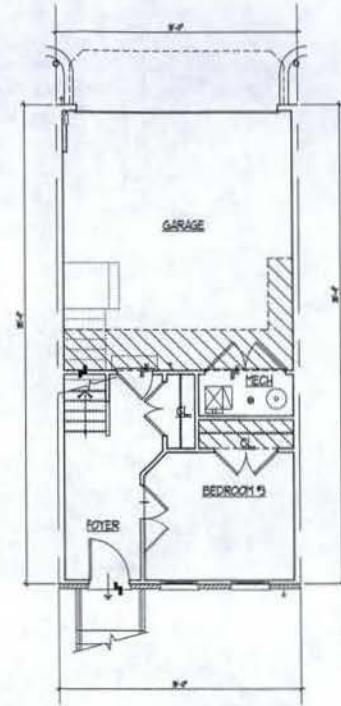
A-114



1
A-120
SCALE
Ground Floor Plan (C-1)
EVA146A-120



2
A-120
SCALE
Ground Floor Plan (EB)
EVA146A-120



1
A-120
SCALE
Ground Floor Plan
EVA146A-120

Saint Paul's College
WASHINGTON, D.C.

THE NEIGHBORHOODS OF
EYA

FLOOR PLANS

UNIT TYPE 'C'
April 02, 2008



LEBBARD GROUP INC.
8111 Leesburg Pike, Ste. 700
Manassas, VA 22112
P: 703.790.0744
F: 703.790.0328
www.lebbardgroup.com



VVA, INC.
2021 Century Blvd.
Germantown, MD 20874
P: 703.815.4000
F: 703.815.2252
www.vva.com

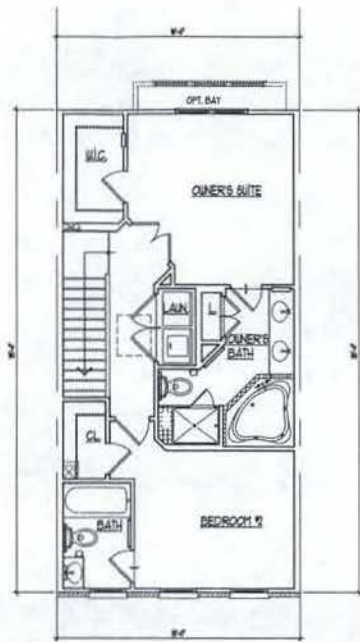


STUDIO 39
8415 Greenleaf Dr. Ste. 100-A
Alexandria, VA 22304
P: 703.718.0000
F: 703.718.0000
www.studio39.com

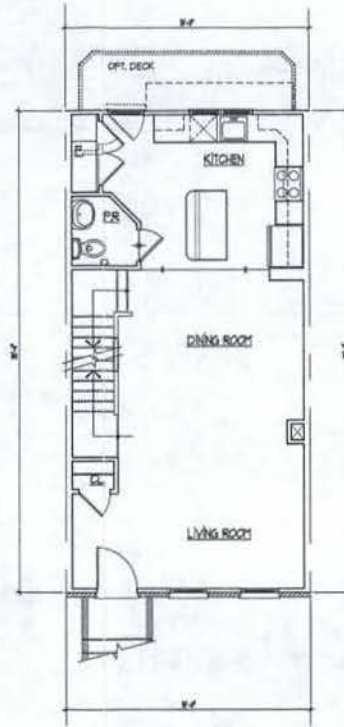
EVA.146a.00



A-120



3
A-121
Third Floor Plan
SCALE
EY146a-121



2
A-121
Second Floor Plan (EB)
SCALE
EY146a-121



1
A-121
Second Floor Plan
SCALE
EY146a-121

Saint Paul's College
WASHINGTON, D.C.



FLOOR PLANS

UNIT TYPE 'C'
April 02, 2008



LESSARD GROUP INC.
8024 Leesburg Pike, Ste. 700
Manassas, VA 22033
P: 703.795.8744
F: 703.795.8738
www.lessardgroup.com



VIFA, INC.
2022 Century Blvd
Glenburnie, MD 20614
P: 301.264.4000
F: 301.264.2282
www.vifa.com

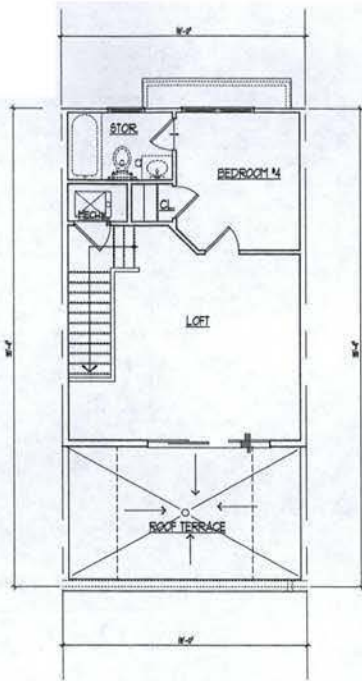


STUDEO 99
9125 Greenleaf Dr., Ste. 100A
Alexandria, VA 22304
P: 703.219.6500
F: 703.219.6503
www.studio99.com

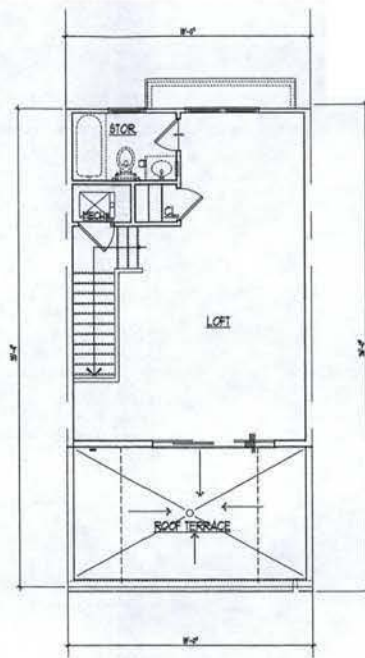
EYA.146a.00



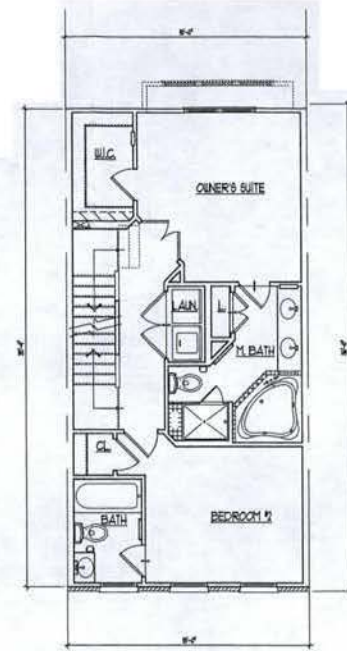
A-121



1
A-122 SCALE EYA146a-122



2
A-122 SCALE EYA146a-122



1
A-122 SCALE EYA146a-122

Saint Paul's College
WASHINGTON, D.C.



FLOOR PLANS
UNIT TYPE 'C'
April 02, 2008



LESSARD GROUP INC.
8711 Leesburg Pike, Ste. 700
Vienna, VA 22184
P: 703.762.8544
F: 703.762.8128
www.lessardgroup.com



VIKA, INC.
20251 Century Blvd.
Chickadee, MD 20754
P: 301.528.4100
F: 301.584.2200
www.vika.com

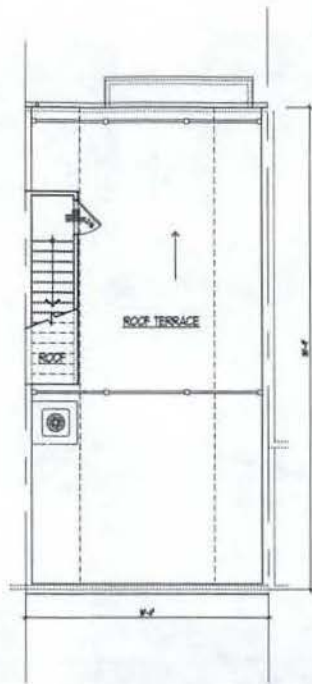


STUDIO 39
5416 Greenleaf Dr. Ste. 300-A
Alexandria, VA 22304
P: 703.718.6500
F: 703.718.6503
www.studio39.com

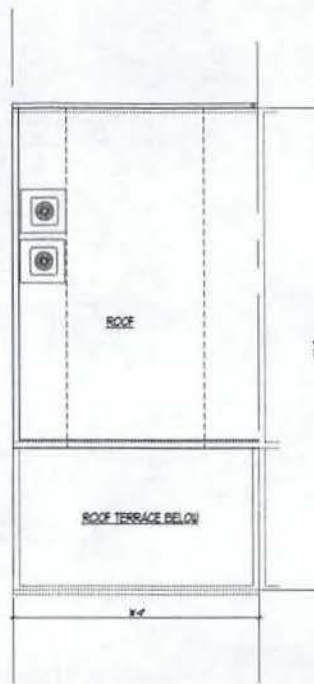
EYA-146a.00



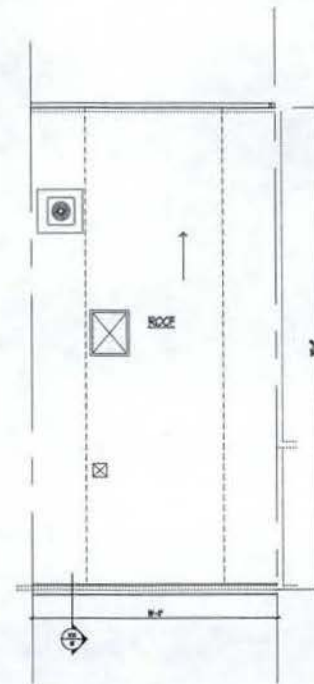
A-122



3
A-123
SCALE: EY146A-123



3
A-123
SCALE: EY146A-123



1
A-123
SCALE: EY146A-123

Saint Paul's College
WASHINGTON, D.C.



FLOOR PLANS

UNIT TYPE 'C'
April 02, 2008



LESSARD GROUP INC.
8511 Leesburg Pike, Ste. 700
Vienna, VA 22182
P: 703.768.8214
F: 703.768.8128
www.lessardgroup.com



VEKA, INC.
3221 Century Blvd.
Chesapeake, VA 23061
P: 757.614.4500
F: 757.614.2282
www.veka.com

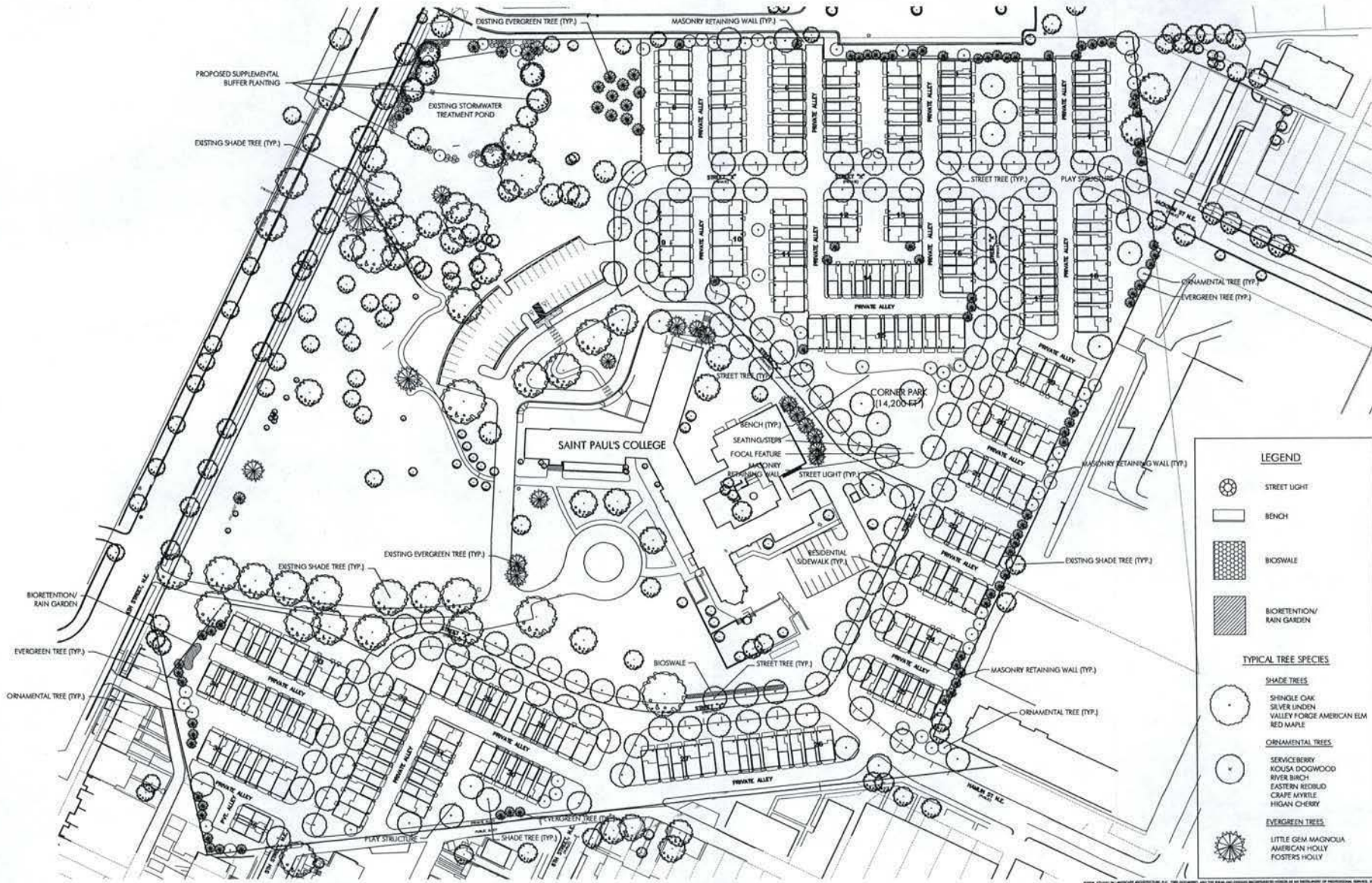


STUDIO 39
8418 Greenfield Dr., Ste. 100-A
Manassas, VA 22110
P: 703.713.8500
F: 703.713.8502
www.studio39.com

EYA 146a.00



A-123



LEGEND

- STREET LIGHT
- BENCH
- BIOSWALE
- BIORETENTION/RAIN GARDEN

TYPICAL TREE SPECIES

SHADE TREES

- SHINGLE OAK
- SILVER LINDEN
- VALLEY FENCE AMERICAN ELM
- RED MAPLE

ORNAMENTAL TREES

- SERVICEBERRY
- KOUSA DOGWOOD
- RIVER BIRCH
- EASTERN REDBUD
- CRAPE MYRTLE
- HIGAN CHERRY

EVERGREEN TREES

- LITTLE GEM MAGNOLIA
- AMERICAN HOLLY
- FOSTERS HOLLY

Saint Paul's College
WASHINGTON, D.C.
THE NEIGHBORHOODS OF
EYA

OVERALL SITE PLAN

April 2, 2008

LESSARD GROUP INC.
8523 Landon Park, Ste. 700
Vienna, VA 22181
P: 703.760.0344
F: 703.760.0328
www.lessardgroup.com

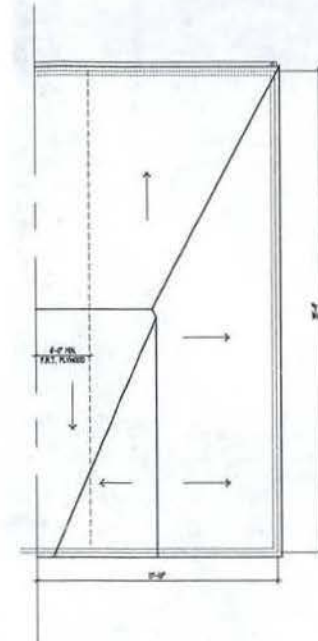
VIVA, INC.
25213 Century Blvd.
Cockeysville, MD 21031
P: 301.816.4500
F: 301.816.2522
www.viva.com

STUDIO 39
5415 Greenleaf Dr., Ste. 202-A
Arlington, VA 22204
P: 703.718.6500
F: 703.718.6509
www.studio39.com



L1.01A

© 2008 Studio 39. All rights reserved. This drawing is the property of Studio 39 and is not to be reproduced, stored in a retrieval system, or transmitted in any form or by any means, electronic, mechanical, photocopying, recording, or by any information storage and retrieval system, without the prior written permission of Studio 39.



1
A-124
Roof Plan @ Elev. #5
SCALE
EVA146A-124

Saint Paul's College
WASHINGTON, D.C.



FLOOR PLANS

UNIT TYPE 'C'
April 02, 2008



LESSARD GROUP INC.
8871 Leesburg Pike, Ste. 700
Manassas, VA 22110
P: 703.790.8241
F: 703.790.8228
www.lginc.com



VIKI, INC.
22751 Century Blvd.
Chantilly, VA 20151
P: 503.815.4330
F: 503.815.2282
www.viki.com

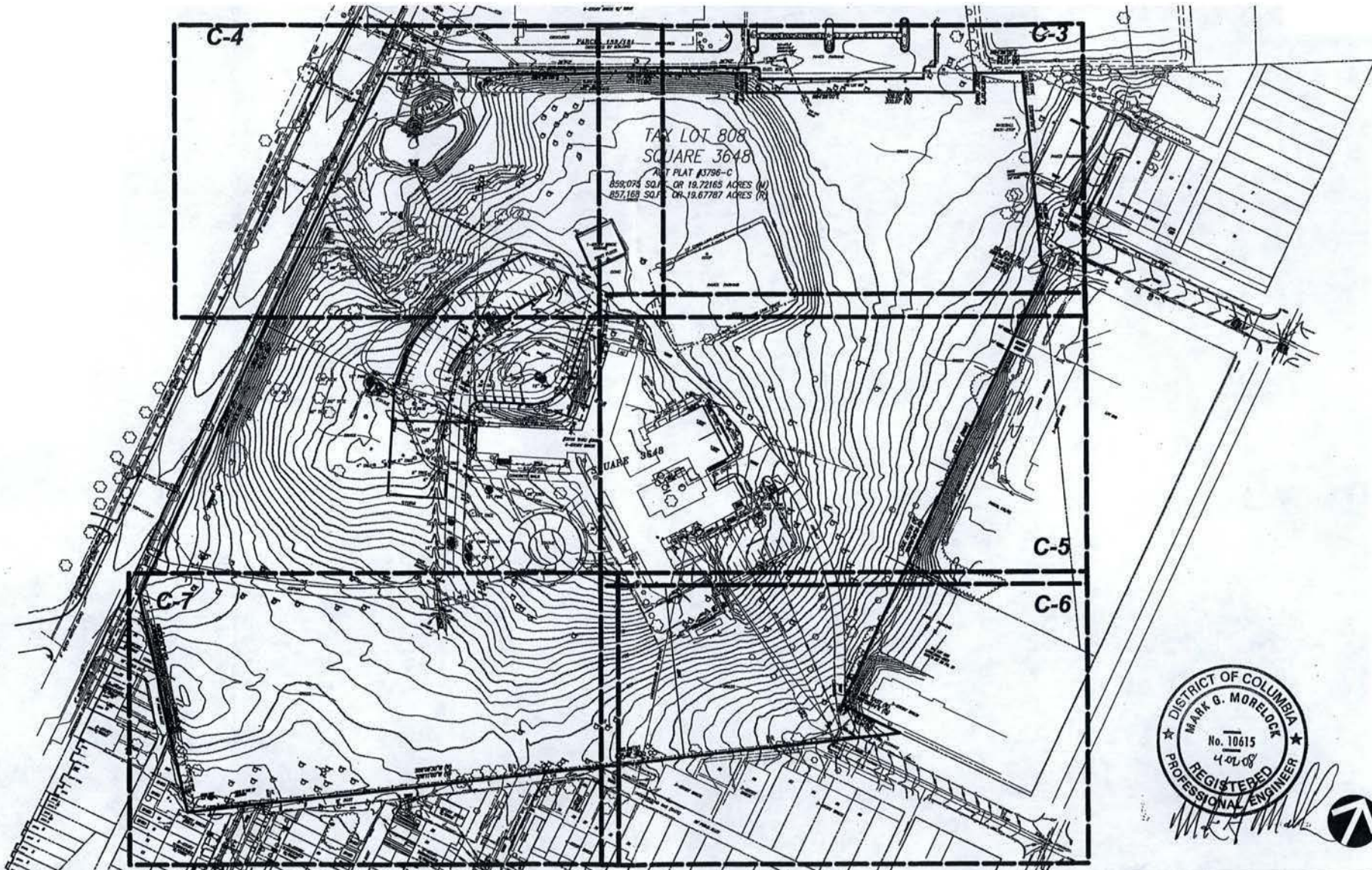


STUDIO 39
8424 Greenbush Dr. Ste. 100-A
Arlington, VA 22210
P: 703.715.8500
F: 703.715.8503
www.studio39.com

EVA.146a.00



A-124



Saint Paul's College
WASHINGTON, D.C.

OVERALL EXISTING CONDITIONS PLAN

April 2, 2008



LAYOUT: C-2, Plotted By: Suter
#:\1000-1500\14037\cadd\pml\stuary\1403100_EXISTING CONDITIONS.dwg, -- Apr 02, 2008 AT 3:39:11 PM



LESSARD GROUP INC.
8321 Leesburg Pike, Ste. 700
Manassas, VA 22110
P: 703.760.8344
F: 703.760.8328
www.lessardgroup.com

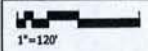


VIVA, INC.
20231 Century Blvd.
Greenwood, MD 20638
P: 301.816.4100
F: 301.816.2261
www.vivainc.com

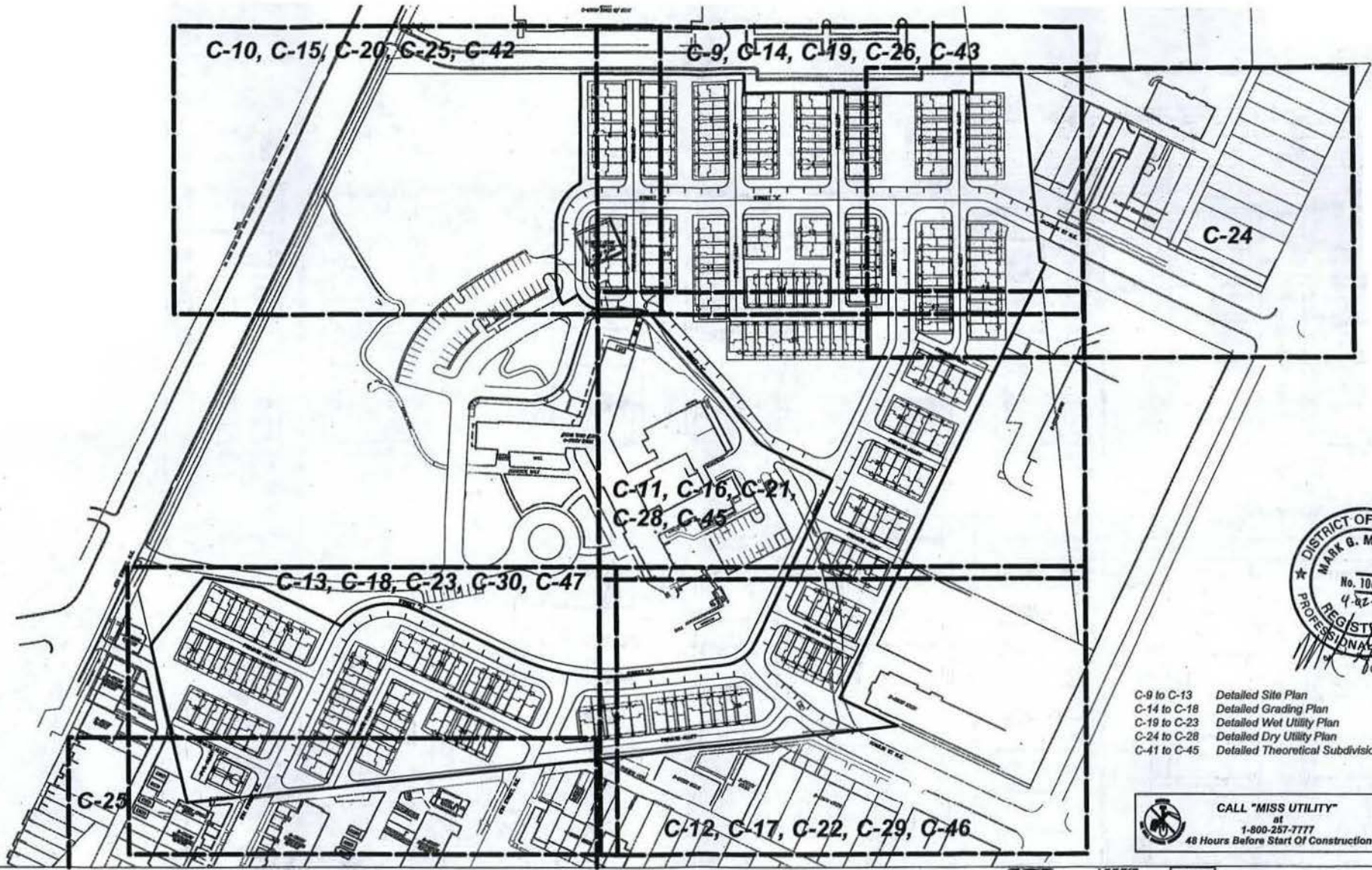


STUDIO 39
6416 Greenleaf Dr. Ste. 100-A
Arlington, VA 22218
P: 703.516.6500
F: 703.516.6863
www.st39.com

1453A



C-2



- C-9 to C-13 Detailed Site Plan
- C-14 to C-18 Detailed Grading Plan
- C-19 to C-23 Detailed Wet Utility Plan
- C-24 to C-28 Detailed Dry Utility Plan
- C-41 to C-45 Detailed Theoretical Subdivision Plan

CALL "MISS UTILITY"
 at
 1-800-257-7177
 48 Hours Before Start Of Construction



Saint Paul's College
 WASHINGTON, D.C.

OVERALL SITE PLAN



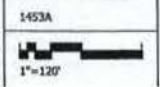
April 2, 2008

LAYOUT: C-8, Plotted By: Quinter
 X:\1000-1500\1452\paulscollege\1452109.dwg - Apr 01, 2008 AT 8:54:02 PM

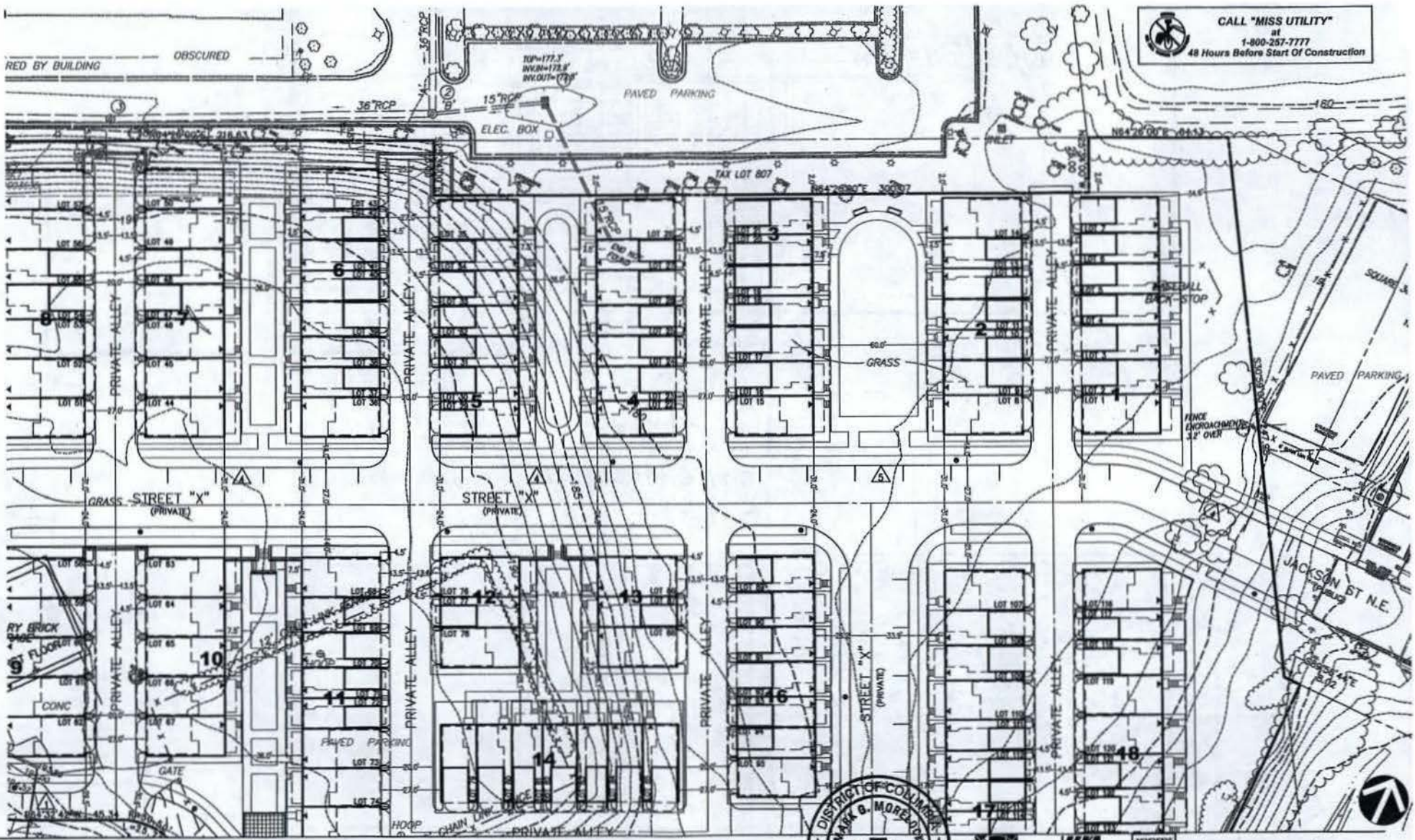
LESSARD GROUP INC.
 8021 Landing Place, Ste. 700
 Manassas, VA 22120
 P: 703.760.0241
 F: 703.760.0228
 www.lessardgroup.com

VIFA, INC.
 20101 Century Blvd.
 Germantown, MD 20884
 P: 301.846.6000
 F: 301.816.2000
 www.vifa.com

STUDIO 39
 4101 Greenock Ct. Ste. 100-A
 Alexandria, VA 22310
 P: 703.216.6000
 F: 703.216.6000
 www.studio39.com



C-8



CALL "MISS UTILITY"
 at
 1-800-257-7777
 48 Hours Before Start Of Construction

Saint Paul's College
 WASHINGTON, D.C.

DETAILED SITE PLAN

April 2, 2008



LAYOUT: C-1, Plotted By: Duler
 N:\1000-1007\103\p\m\m\m\m\1455300.dwg - Apr 02, 2008 AT 3:49:58 PM



LEISARD GROUP INC.
 4033 Leesburg Pike, Ste. 200
 Vienna, VA 22184
 P: 703.709.8214
 F: 703.709.8218
 www.leisardgroup.com

VIFA, INC.
 20222 Century Blvd.
 Alexandria, VA 22314
 P: 703.414.6200
 F: 703.414.2303
 www.vifa.com

STUDIO 39
 4033 Leesburg Dr. Ste. 100-A
 Alexandria, VA 22314
 P: 703.414.6200
 F: 703.414.2303
 www.studio39.com

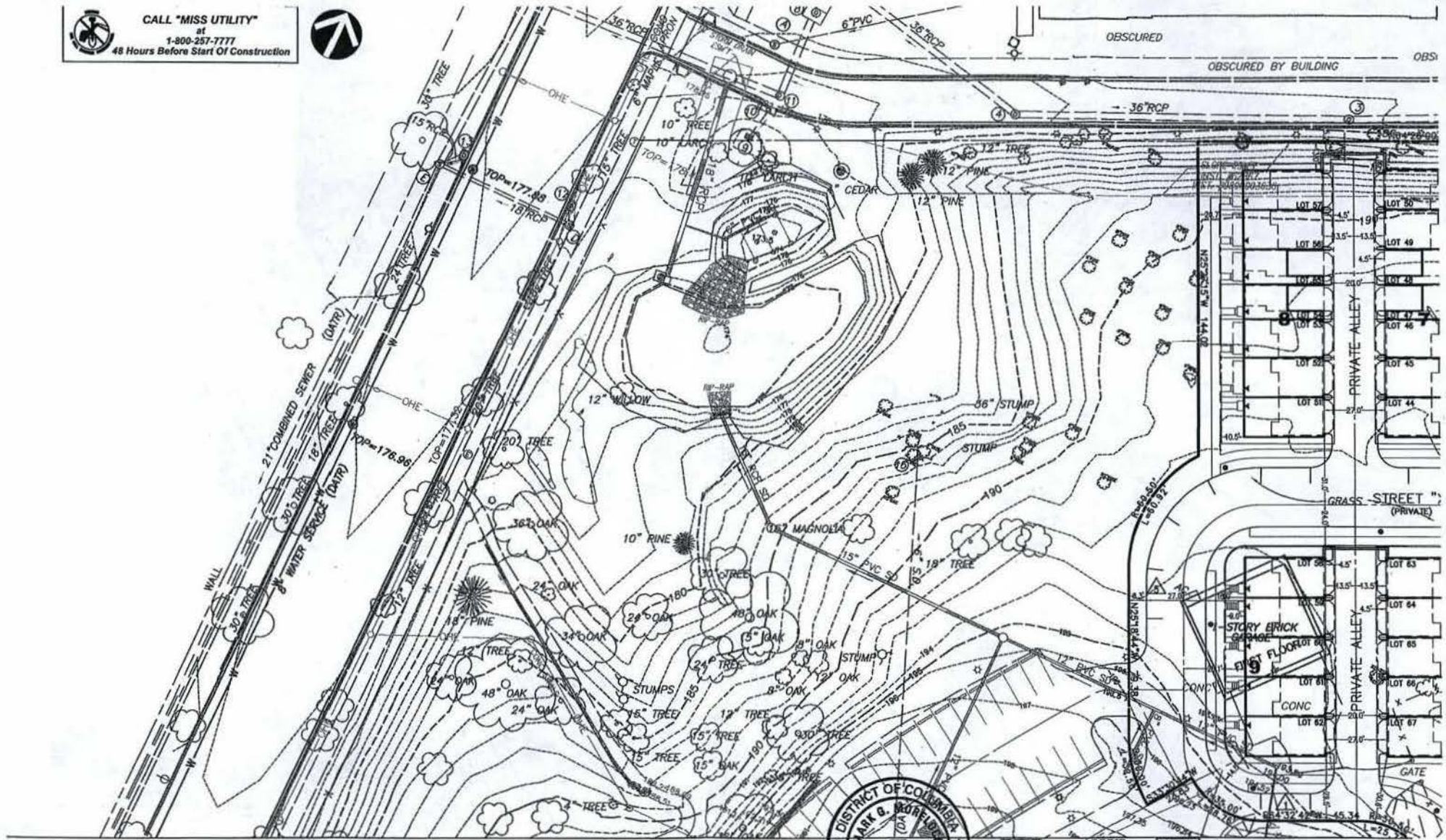
1453A



C-9



CALL "MISS UTILITY"
at
1-800-257-7777
48 Hours Before Start Of Construction



Saint Paul's College
WASHINGTON, D.C.

DETAILED SITE PLAN

April 2, 2008



LAYOUT: C-10, Plotted By: Quaker
K:\1000-15001\453\mof\grd\sbay\1453100.dwg -- Apr 02, 2008 AT 2:57:19 PM



LESSARD GROUP INC.
8923 Landry Pk. Dr. 700
Metairie, LA 70001
P: 504.885.5344
F: 504.885.5338
www.lessardgroup.com

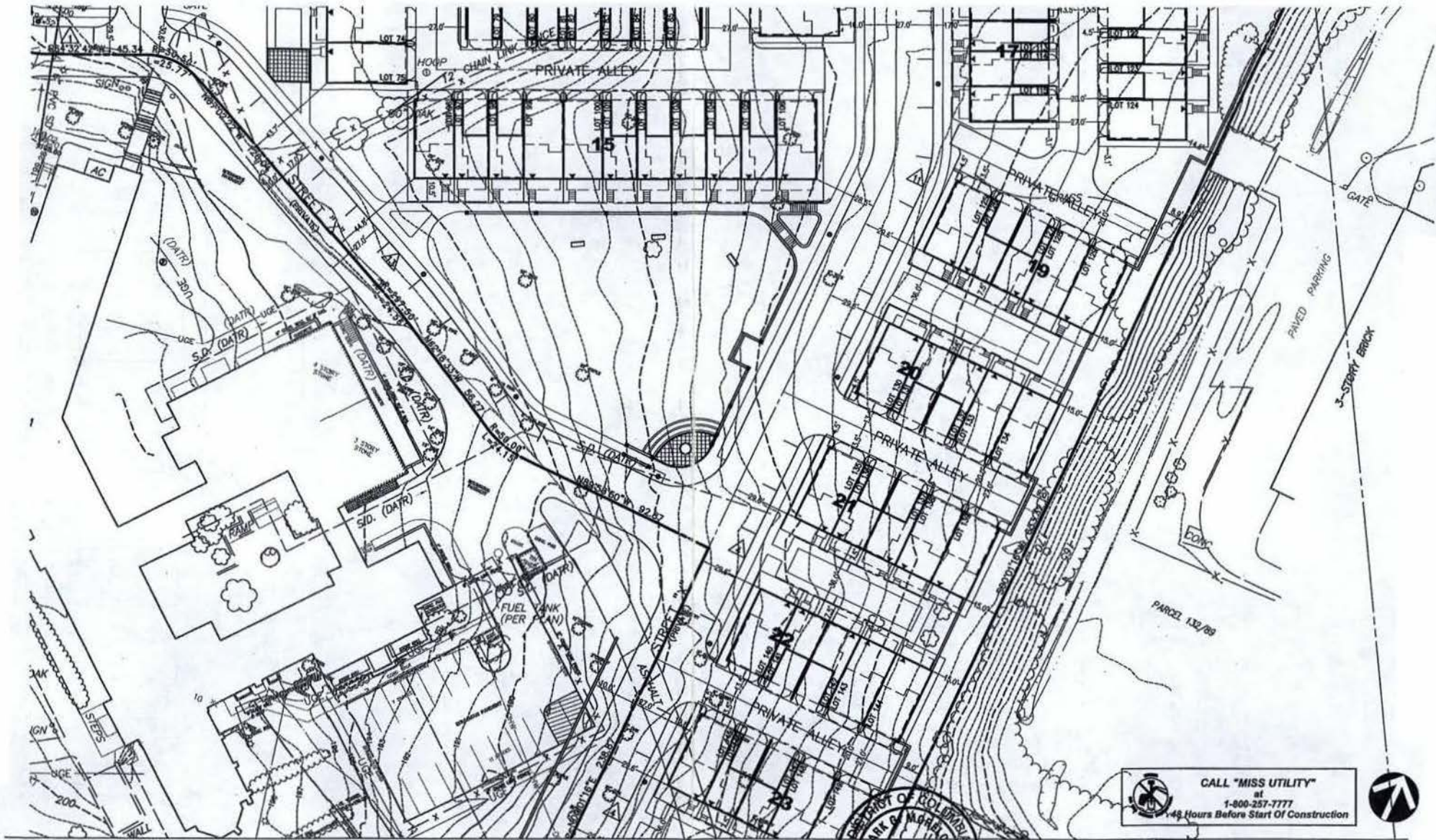
VIKA, INC.
20231 Century Dr.
Greenwood, MS 38901
P: 662.816.4200
F: 662.816.2262
www.vika.com

STUDEO 39
6416 Overdale Dr. Ste. 100-A
Alexandria, VA 22304
P: 703.718.4200
F: 703.718.4203
www.studio39.com

1453A



C-10



Saint Paul's College
WASHINGTON, D.C.

DETAILED SITE PLAN

April 2, 2008



LAYOUT: C-11, Plotted By: Gunter
K:\1000-1000\1451\psd\prntsbny\1453100.dwg -- Apr 02, 2008 AT 2:58:54 PM



LESSARD GROUP INC.
8021 Leesburg Pike, Ste. 700
Manassas, VA 22112
P: 703.790.8744
F: 703.790.8128
www.lessardgroup.com



VIFA, INC.
2023 Century Blvd.
Chesapeake, VA 23060
P: 703.719.4500
F: 703.719.4000
www.vifa.com



STUDIO 39
6418 Greenway Dr., Ste. 100-A
Arlington, VA 22204
P: 703.719.4500
F: 703.719.4000
www.studio39.com

1453A



1"=40'

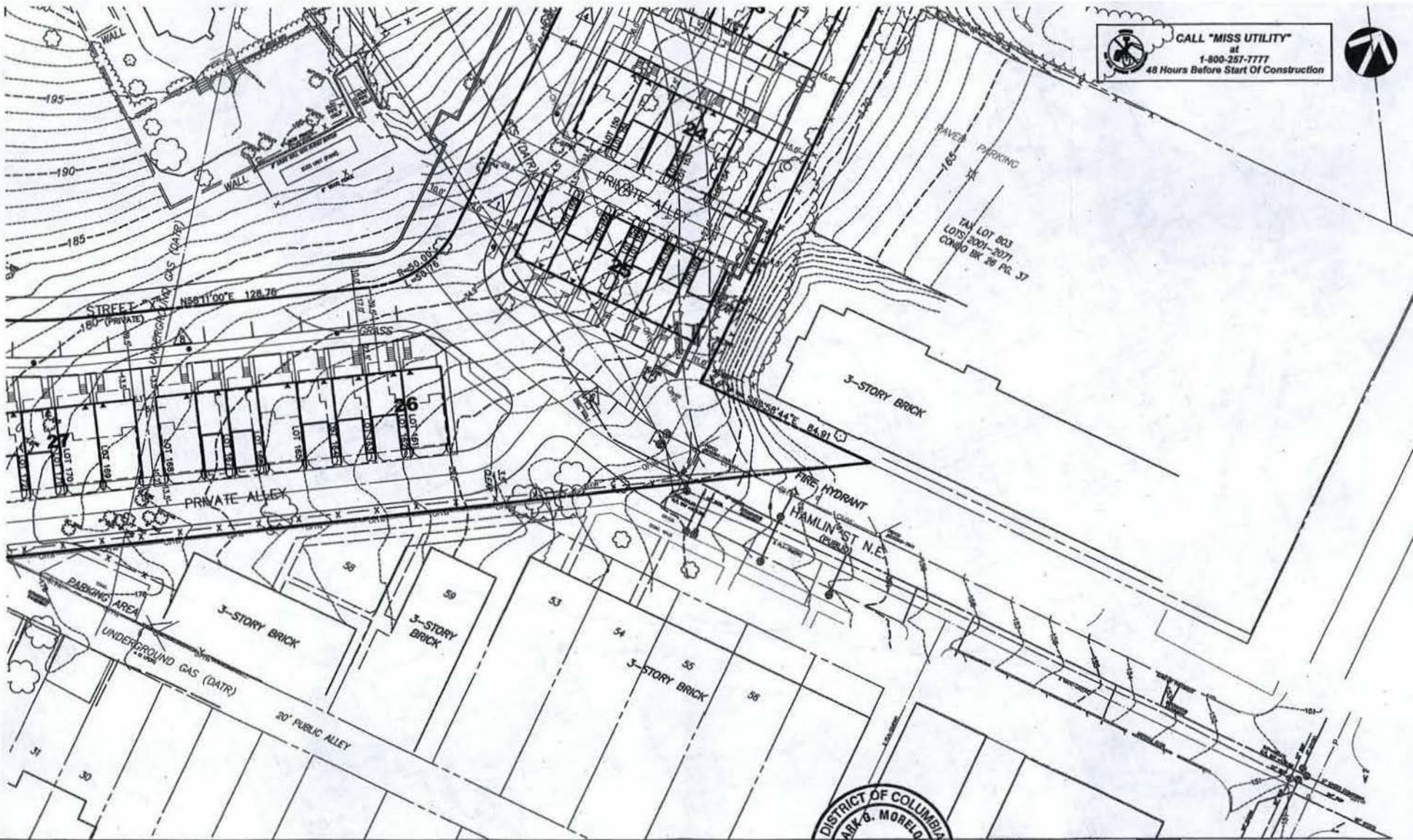
CALL "MISS UTILITY"
at
1-800-257-7777
48 Hours Before Start Of Construction



C-11



CALL "MISS UTILITY"
at
1-800-257-7777
48 Hours Before Start Of Construction



Saint Paul's College
WASHINGTON, D.C.



LAYOUT: C-15, Plotted By: Doris
R:\1000-1000\1453\ywd\yrc\sbury\1453200.dwg, - Apr 02, 2008 AT 2:56:58 PM

DETAILED SITE PLAN

April 2, 2008



LESSARD GROUP INC.
8231 Landburg Pike, Ste. 700
Manassas, VA 20108
P: 703.790.0244
F: 703.790.0100
www.lessardgroup.com

VIKA INC.
20231 Century Blvd.
Greenbelt, MD 20741
P: 301.816.6100
F: 301.816.6200
www.vika.com

STUDIO 39
6410 Greenbelt Dr., Ste. 310-A
Greenbelt, MD 20770
P: 301.778.6100
F: 301.778.6200
www.studio39.com

1453A



C-12



CALL "MISS UTILITY"
 AT
 1-800-257-7777
 48 Hours Before Start Of Construction



Saint Paul's College
 WASHINGTON, D.C.

DETAILED SITE PLAN



April 2, 2008

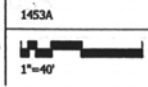


LAYOUT: C-13, Plotted By: Gantler
 K:\1000-1007\1453\psd\preliminary\1453100.dwg, -- Apr 02, 2008 AT 3:00:03 PM

LESSARD GROUP INC.
 8022 Leesburg Pike, Ste. 200
 Vienna, VA 22182
 P: 703.500.0344
 F: 703.760.8208
 www.lessardgroup.com

VISA INC.
 2020 Century Blvd.
 Alexandria, VA 22304
 P: 703.684.6500
 F: 703.718.6200
 www.visa.com

STUDIO 39
 8465 Greenleaf Dr, Ste. 100-A
 Alexandria, VA 22310
 P: 703.718.6200
 F: 703.718.6200
 www.studio39.com

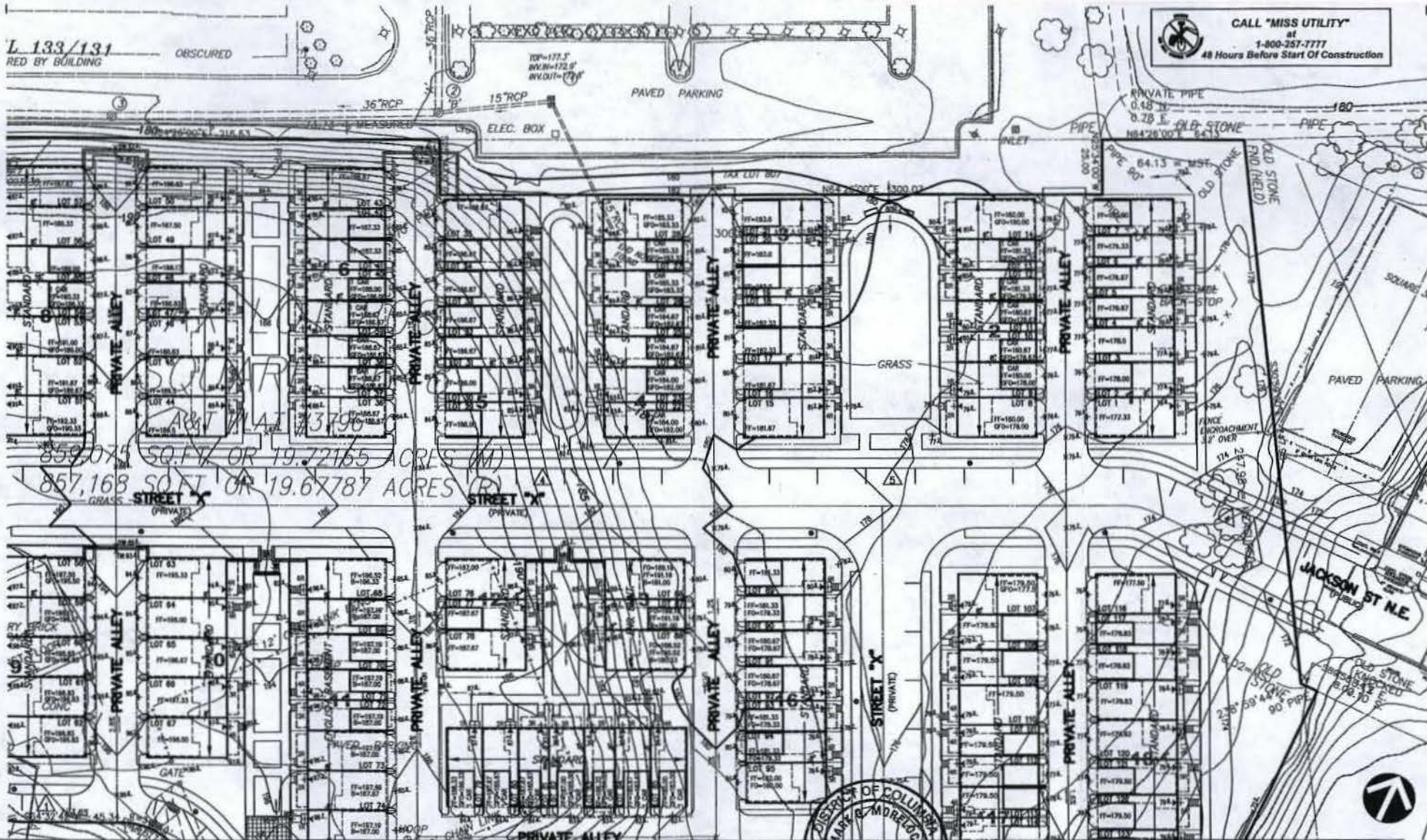


C-13

L 133/131
RED BY BUILDING

OBSCURED

CALL "MISS UTILITY"
at
1-800-257-7777
48 Hours Before Start Of Construction



Saint Paul's College
WASHINGTON, D.C.

DETAILED GRADING PLAN



April 2, 2008



LAYOUT: C-14, Plotted By: Gester
K:\1000-1500\1457\plan\grd\stpa\1457100-080208.dwg, - Apr 03, 2008 AT 4:06:53 PM

LESSARD GROUP INC.
8022 Landings Way, Ste. 100
Silverdale, WA 98138
P: 206.788.5344
F: 206.788.5328
www.lessardgroup.com

VISA, INC.
2001 Century Blvd.
Brentwood, TN 37027
P: 615.874.4100
F: 615.874.4000
www.visa-usa.com

STUDIO 39
2002 Columbia Dr., Ste. 100-4
Brentwood, TN 37027
P: 615.874.8000
F: 615.874.4000
www.studio39.com



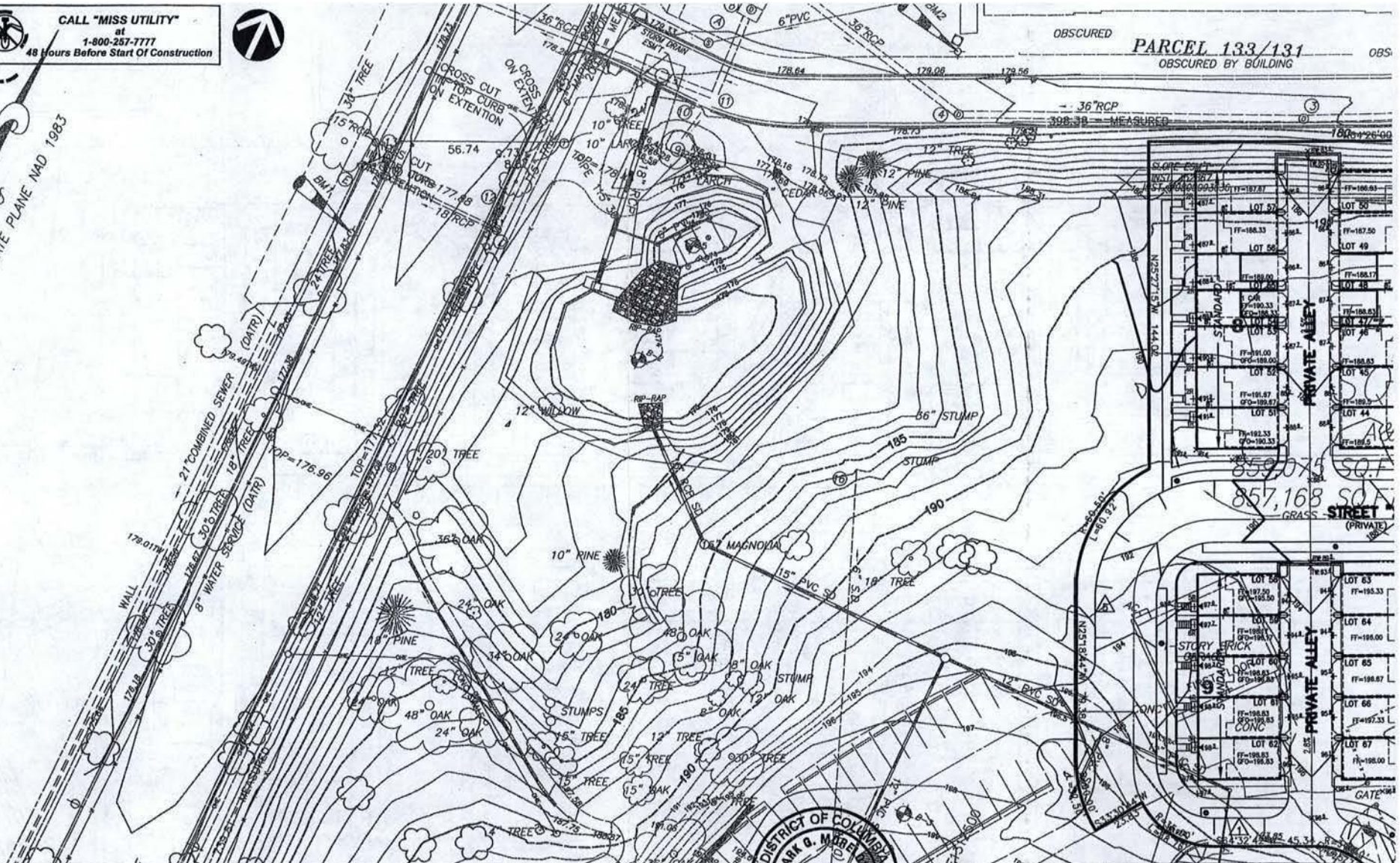
C-14

CALL "MISS UTILITY"
at
1-800-257-7777
48 hours Before Start Of Construction



MARYLAND STATE PLANE NAD 1983

OBSCURED
PARCEL 133/131
OBSCURED BY BUILDING



Saint Paul's College
WASHINGTON, D.C.

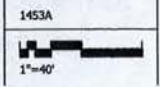
DETAILED GRADING PLAN



LESSARD GROUP INC.
6511 Leesbury Pk. Ste. 200
Vienna, VA 22182
P: 703.760.8544
F: 703.760.8338
www.lessardgroup.com

VIFA INC.
3033 Center Blvd.
Georgetown, MD 20884
P: 301.816.4100
F: 301.816.3312
www.vifa.com

STUDIO 39
4415 Greenleaf Dr. Ste. 100-A
Arlington, VA 22210
P: 703.254.6100
F: 703.254.6200
www.studio39.com



C-15



LAYOUT: C-15, Plotted By: Guntar
K:\V1000-1500\1537\0608\p\m\m\m\1453100-GRADING.dwg -- Apr 02, 2008 AT 4:07:45 PM



SQUARE 3648

Saint Paul's College
WASHINGTON, D.C.



DETAILED GRADING PLAN

April 2, 2008

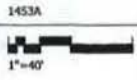
LAYOUT: C-16, Finald By: Guntar
K:\V000-1506\1453\final\grading\1453100-GRAD02.dwg, - Apr 02, 2008 AT 4:09:32 PM



LESSARD GROUP INC.
6522 Leeding Pkwy, Ste. 200
Chantilly, VA 20151
P: 703.750.9244
F: 703.750.9238
www.lessardgroup.com

VISA INC.
3000 Century Blvd.
Greenwood, VA 22189
P: 703.816.6300
F: 703.816.6302
www.visa.com

STUDIO 39
6418 Greenway Dr., Ste. 105-A
Greenwood, VA 22189
P: 703.719.6200
F: 703.719.6202
www.studio39.com

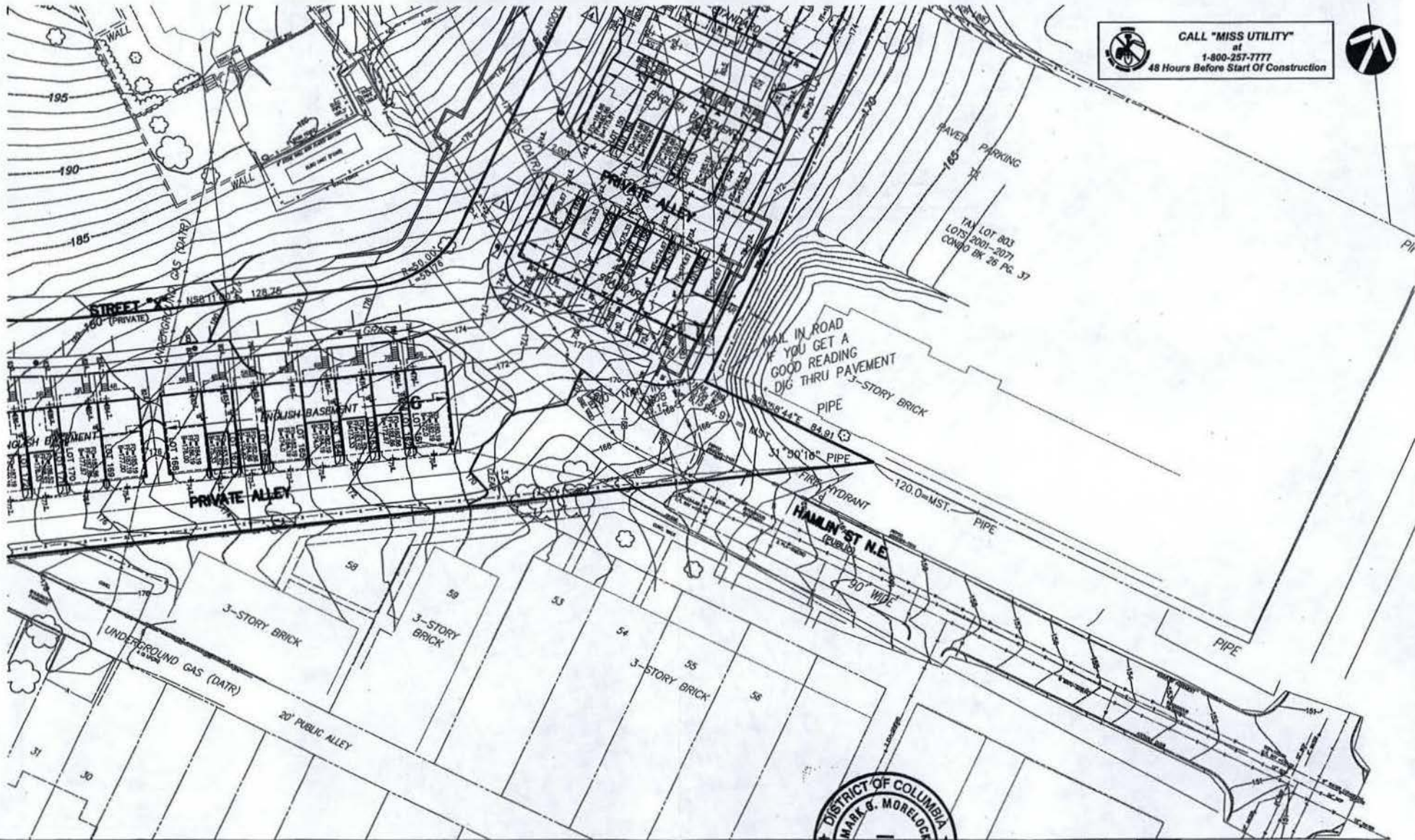


CALL "MISS UTILITY"
at
1-800-257-7777
48 Hours Before Start Of Construction



C-16

CALL "MISS UTILITY"
 at
 1-800-257-7777
 48 Hours Before Start Of Construction



Saint Paul's College
 WASHINGTON, D.C.

DETAILED GRADING PLAN

April 2, 2008



LAYOUT: C-17, Plotted By: Guntar
 4/10/08 11:45:15 AM preliminary\1453100-GRADING.dwg - Apr 03, 2008 AT 4:10:40 PM



LESSARD GROUP INC.
 8021 Leesbury Pk. Dr. 700
 Vienna, VA 22181
 P: 703.760.8244
 F: 703.760.9338
 www.lessardgroup.com

VIFA, INC.
 20351 Century Blvd.
 Greenbelt, MD 20740
 P: 301.816.4300
 F: 301.816.2262
 www.vfa.com

STUDIO 39
 8445 Greenway Dr. Ste. 100-A
 Alexandria, VA 22313
 P: 703.778.8000
 www.studio39.com

1453A



C-17



CALL "MISS UTILITY"
 at
 1-800-257-7777
 48 Hours Before Start of Construction



Saint Paul's College
 WASHINGTON, D.C.
 THE NEIGHBORHOODS OF
EYA

DETAILED GRADING PLAN

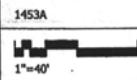
April 2, 2008

LAYOUT: C-18, Plotted By: Darter
 AC:\1000-1900\1453\pauls\gradings\1453100-GRADING.dwg - Apr 02, 2008 AT 4:12:38 PM

LESSARD GROUP INC.
 8331 Leesburg Pike, Ste. 700
 Vienna, VA 22182
 P: 703.768.9744
 F: 703.768.9745
 www.lessardgroup.com

VTKA, INC.
 20351 Century Blvd.
 Germantown, MD 20874
 P: 763.616.4300
 F: 763.616.4305
 www.vtkainc.com

STUDIO 30
 6416 Greenvalley Dr., Ste. 100-A
 Greenvalley, VA 22186
 P: 703.719.8200
 F: 703.719.8205
 www.studio30.com



C-18