

**SAINT PAUL'S COLLEGE  
EYA, LLC**

**APPENDIX**

RECEIVED  
D.C. OFFICE OF ZONING  
2008 APR 21 AM 4: 52

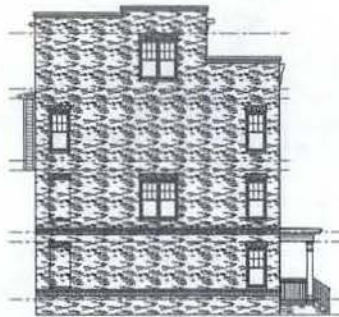
**PRE-HEARING SUBMISSION  
ZONING COMMISSION CASE NO. 07-27**

**APRIL 18, 2008**

ZONING COMMISSION  
District of Columbia  
CASE NO. 07-27  
EXHIBIT NO. 17

ZONING COMMISSION  
District of Columbia  
CASE NO.07-27  
EXHIBIT NO.17A1

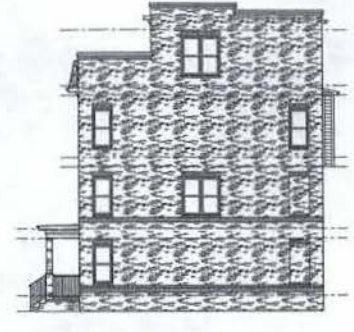




LEFT SIDE ELEVATION



FRONT ELEVATION



RIGHT SIDE ELEVATION



REAR ELEVATION



KEY PLAN

Saint Paul's College  
WASHINGTON, D.C.



**BUILDING ELEVATIONS**

BUILDING - 1  
April 2, 2008



LESSARD GROUP INC.  
8521 Landburg Pike, Ste. 705  
Arlington, VA 22203  
P: 703.762.2199  
F: 703.762.8282  
www.lessardgroup.com



VIXA, INC.  
2021 Century Blvd.  
Crownsville, MD 21031  
P: 703.718.6000  
F: 703.818.2182  
www.vixa.com

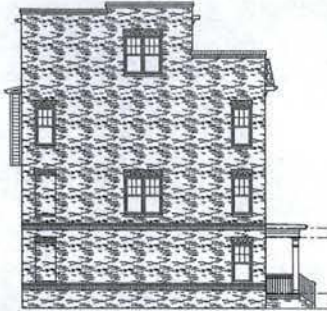


STUDIO 3P  
8410 Greenway Dr., Ste. 100-A  
Arlington, VA 22210  
P: 703.718.6000  
F: 703.718.8100  
www.studio3p.com

EYA-146a.00



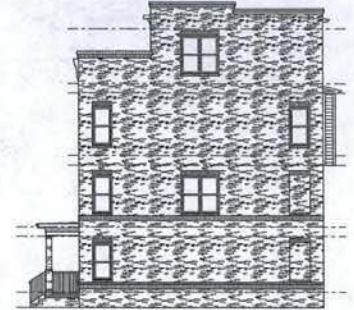
A-401



LEFT SIDE ELEVATION



FRONT ELEVATION



RIGHT SIDE ELEVATION



REAR ELEVATION



KEY PLAN

Saint Paul's College  
WASHINGTON, D.C.



BUILDING ELEVATIONS

BUILDING - 2  
April 2, 2008



LESSARD GROUP INC.  
8521 Leesburg Pike, Ste. 702  
Manassas, VA 22110  
P: 703.760.8214  
F: 703.760.9328  
www.lessardgroup.com



VIKA INC.  
20331 Century Blvd.  
Gainesville, VA 22019  
P: 703.768.4100  
F: 703.768.2292  
www.vika.com



STUDIO 39  
6428 Greenleaf Dr., Ste. 100-A  
Arlington, VA 22210  
P: 703.718.6500  
F: 703.718.6502  
www.studio39.com

EYA.146a.00



EYA146a-402

A-402



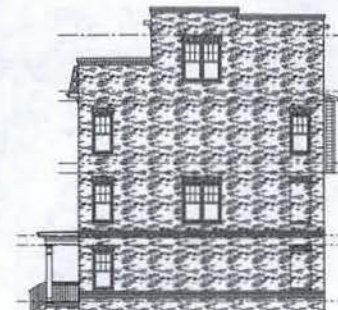
UNITS 1A

LEFT SIDE ELEVATION



UNITS 1A UNITS 2 UNITS 3 UNITS 4 UNITS 5 UNITS 6 UNITS 7

FRONT ELEVATION



UNITS 8

RIGHT SIDE ELEVATION



UNITS 1A UNITS 2 UNITS 3 UNITS 4 UNITS 5 UNITS 6 UNITS 7 UNITS 8

REAR ELEVATION



KEY PLAN

Saint Paul's College  
WASHINGTON, D.C.



BUILDING ELEVATIONS

BUILDING - 3

April 2, 2008



LESSARD GROUP INC.  
8331 Lumbury Pike, Ste. 702  
Vienna, VA 22181  
P: 703.792.8944  
F: 703.792.9338  
www.lessardgroup.com



VIKA INC.  
20251 Century Blvd  
Dorchester, MA 01919  
P: 508.288.4100  
F: 508.288.2342  
www.vika.com



STUDIO 39  
6418 Grosvenor Dr., Ste. 100-A  
Arlington, VA 22209  
P: 703.739.6300  
F: 703.739.6302  
www.studio39.com

EYA.146a.00



EYA146a-403

A-403



LEFT SIDE ELEVATION



LEFT SIDE ELEVATION



RIGHT SIDE ELEVATION



LEFT SIDE ELEVATION



KEY PLAN

LEFT SIDE ELEVATION

Saint Paul's College  
WASHINGTON, D.C.



BUILDING ELEVATIONS

BUILDING - 4

April 2, 2008



LESSARD GROUP INC.  
8321 Leesburg Pike, Ste. 710  
Vienna, VA 22110  
P: 703.760.8244  
F: 703.760.8228  
www.lessardgroup.com



VIKA INC.  
20351 Century Blvd.  
Chantilly, VA 20151  
P: 703.816.4100  
F: 703.816.2542  
www.vika.com



STUDIO 39  
6418 Greenleaf Dr., Ste. 100-4  
Alexandria, VA 22315  
P: 703.718.6000  
F: 703.718.6003  
www.studio39.com

EYA.146a.00



EYAS66A-004

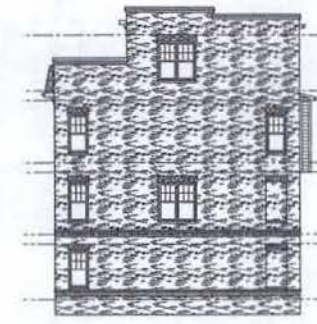
A-404



LEFT SIDE ELEVATION



FRONT ELEVATION



RIGHT SIDE ELEVATION



REAR ELEVATION



Saint Paul's College  
WASHINGTON, D.C.



BUILDING ELEVATIONS

BUILDING - 5  
April 2, 2008

**LESSARD GROUP INC.**  
6221 Leesburg Pike, Ste. 700  
Falls Church, VA 22041  
P: 703.762.8744  
F: 703.762.8728  
www.lessardgroup.com

**VIXA, INC.**  
2031 Century Blvd.  
Germantown, VA 22054  
P: 703.818.4100  
F: 703.818.2562  
www.vixa.com

**STUDIO 39**  
9414 Greenbush Dr. Ste. 100-A  
Alexandria, VA 22304  
P: 703.718.8500  
F: 703.718.6582  
www.studio39.com

EYA.146a.00  
1/8" = 1'-0"  
EYA146A-05

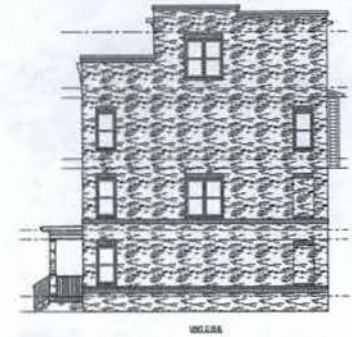
A-405



LEFT SIDE ELEVATION



FRONT ELEVATION



RIGHT SIDE ELEVATION



REAR ELEVATION



Saint Paul's College  
WASHINGTON, D.C.

THE NEIGHBORHOODS OF  
**EYA**

**BUILDING ELEVATIONS**

BUILDING - 6  
April 2, 2008



**LESSOR GROUP INC.**  
8025 Leesburg Pike, Ste. 700  
Manassas, VA 22182  
P: 703.793.8784  
F: 703.793.9238  
www.lessorgroup.com



**VIKA INC.**  
2825 Century Blvd.  
Dumfriesshire, VA 22024  
P: 703.584.6500  
F: 703.584.2282  
www.vika.com



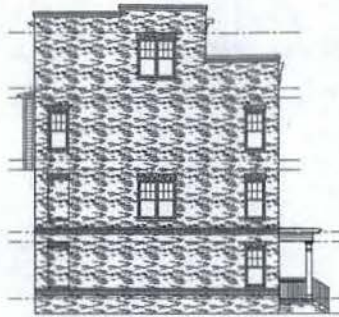
**STUDIO 39**  
8425 University Dr., Ste. 100-A  
Alexandria, VA 22308  
P: 703.713.8380  
F: 703.713.8393  
www.studio39.com

EYA-146a-00



A-406

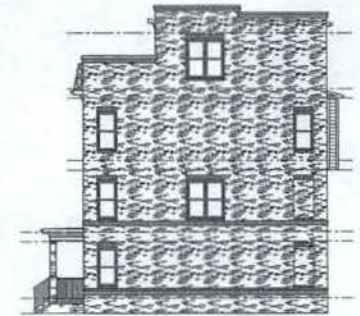




LEFT SIDE ELEVATION



FRONT ELEVATION



RIGHT SIDE ELEVATION



REAR ELEVATION



Saint Paul's College  
WASHINGTON, D.C.



BUILDING ELEVATIONS

BUILDING - 7  
April 2, 2008

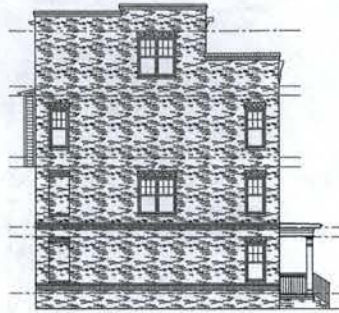
**LESSARD GROUP INC.**  
802 Century Pk. Ste. 700  
Harrisburg, PA 17111  
P: 717.790.8944  
F: 717.790.8328  
www.lgic.com

**VKA, INC.**  
3031 Century Blvd.  
Gettysburg, MD 21741  
P: 717.818.4330  
F: 717.818.2242  
www.vka.com

**STUDIO 39**  
918 Conover Dr. Ste. 100-A  
Arlington, VA 22218  
P: 703.713.8500  
F: 703.713.8802  
www.studio39.com

EYA.146a.00  
1/8" = 1'-0"  
EYA146a-407

A-407



UNIT C-01A

LEFT SIDE ELEVATION



UNIT C-01A

UNIT C-01B

UNIT C-01A

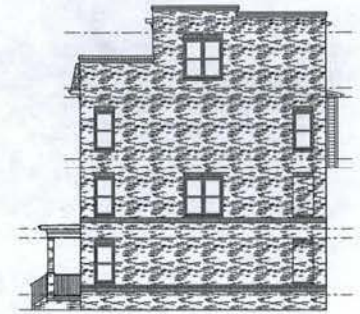
UNIT A-01A

UNIT A-01A

UNIT C-01B

UNIT C-01A

FRONT ELEVATION



UNIT C-01A

RIGHT SIDE ELEVATION



UNIT C-01A

UNIT C-01B

UNIT A-01A

UNIT A-01A

UNIT C-01B

UNIT C-01B

UNIT C-01A

REAR ELEVATION



KEY PLAN

Saint Paul's College  
WASHINGTON, D.C.



BUILDING ELEVATIONS

BUILDING - 8

April 2, 2008



LESSARD GROUP INC.  
8525 Leesburg Pike, Ste. 700  
Manassas, VA 22181  
P: 703.790.8244  
F: 703.790.8338  
www.lessardgroup.com



VIFA INC.  
20251 Century Blvd.  
Centersville, MD 20827  
P: 703.814.4500  
F: 703.718.8503  
www.vifa.com



STUDIO 39  
8426 Greenfield Dr., Ste. 100-A  
Alexandria, VA 22309  
P: 703.718.8500  
F: 703.718.8503  
www.studio39.com

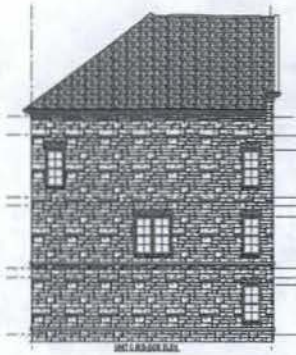
EYA.146a.00



1/8" = 1'-0"

EYA146A-018

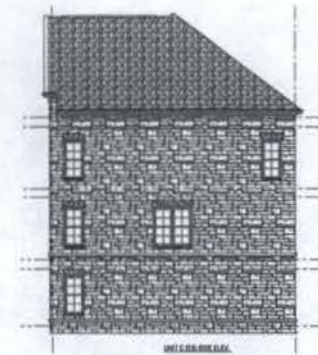
A-408



LEFT SIDE ELEVATION



FRONT ELEVATION



RIGHT SIDE ELEVATION



REAR ELEVATION



KEY PLAN

Saint Paul's College  
WASHINGTON, D.C.

THE NEIGHBORHOODS OF  
**EYA**

**BUILDING ELEVATIONS**

BUILDING - 9  
April 2, 2008



**LESSARD GROUP INC.**  
8551 Landburg Pike, Ste. 700  
Vienna, VA 22184  
P: 703.790.9349  
F: 703.790.9339  
www.lessardgroup.com



**VIKI, INC.**  
3071 Century Blvd.  
Baltimore, MD 21044  
P: 410.518.4100  
F: 410.514.1288  
www.vika.com



**STUDIO 39**  
4414 Grosvenor Dr., Ste. 405A  
Arlington, VA 22204  
P: 703.718.6200  
F: 703.718.6201  
www.studio39.com

EYA.146a.00



N.T.S. EYA146a-00

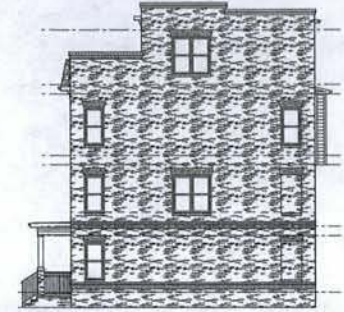
A-409



UNIT C:R:R  
LEFT SIDE ELEVATION



UNIT C:R:R A UNIT C:R:R A UNIT C:R:R A UNIT C:R:R A UNIT C:R:R  
FRONT ELEVATION



UNIT C:R:R  
RIGHT SIDE ELEVATION



UNIT C:R:R UNIT C:R:R A UNIT C:R:R A UNIT C:R:R A UNIT C:R:R  
REAR ELEVATION



KEY PLAN

Saint Paul's College  
WASHINGTON, D.C.



BUILDING ELEVATIONS

BUILDING - 10

April 2, 2008



LESSARD GROUP INC.  
8521 Leesburg Pike, Ste. 700  
Vienna, VA 22182  
P: 703.790.8744  
F: 703.798.0788  
www.lessardgroup.com



VIKA, INC.  
2025 Century Blvd.  
Chesapeake, VA 23041  
P: 703.316.4100  
F: 703.316.2500  
www.vika.com



STUDIO 39  
8516 Greenbelle Dr., Ste. 100-A  
Alexandria, VA 22315  
P: 703.719.8500  
F: 703.719.8503  
www.studio39.com

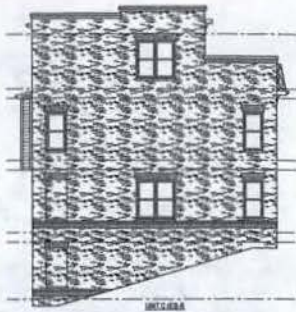
EVA.146a.00



N.T.S.

EVA146a-410

A-410



LEFT SIDE ELEVATION



FRONT ELEVATION



RIGHT SIDE ELEVATION



REAR ELEVATION



KEY PLAN

Saint Paul's College  
WASHINGTON, D.C.

THE NEIGHBORHOODS OF  
**EYA**

**BUILDING ELEVATIONS**

BUILDING - 11

April 2, 2008



**LESBARD GROUP INC.**  
8024 Leesberry Pl., Ste. 700  
Manassas, VA 20108  
P: 703.790.0744  
F: 703.790.0108  
www.lesbardgroup.com



**VEKA, INC.**  
3025 Century Blvd.  
Chantilly, VA 20151  
P: 703.868.4100  
F: 703.868.2400  
www.veka.com

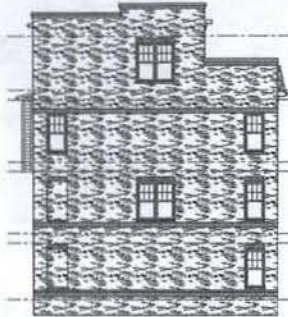


**STUDIO 39**  
8416 Greenway Dr., Ste. 100-4  
Manassas, VA 20108  
P: 703.718.8500  
F: 703.718.8500  
www.studio39.com

EYA.146a.00

1/8" = 1'-0" EYA146a-411

A-411



UNLESS  
LEFT SIDE ELEVATION



UNLESS UNLESS UNLESS  
FRONT ELEVATION



UNLESS  
RIGHT SIDE ELEVATION



UNLESS UNLESS UNLESS  
REAR ELEVATION



KEY PLAN

Saint Paul's College  
WASHINGTON, D.C.



BUILDING ELEVATIONS

BUILDING - 12  
April 2, 2008



LESSARD GROUP INC.  
8321 Leesburg Pike, Ste. 700  
Manassas, VA 22111  
P: 703.790.8194  
F: 703.790.6338  
www.lessardgroup.com



VIKI INC.  
2821 Century Blvd.  
Crownsville, MD 20814  
P: 301.584.4500  
F: 301.584.2362  
www.viki.com

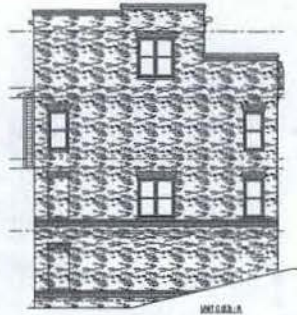


STUDIO 30  
4428 Greenleaf Dr. Ste. 100-A  
Alexandria, VA 22313  
P: 703.753.6902  
F: 703.753.6903  
www.studio30.com

EYA.146a.00



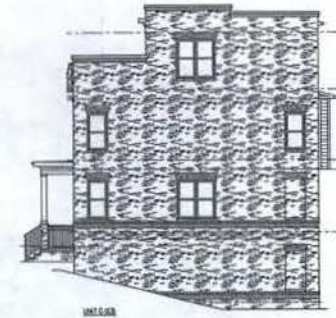
A-412



LEFT SIDE ELEVATION



FRONT ELEVATION



RIGHT SIDE ELEVATION



REAR ELEVATION



KEY PLAN

Saint Paul's College  
WASHINGTON, D.C.



BUILDING ELEVATIONS

BUILDING - 13  
April 2, 2008



LESSARD GROUP INC.  
8531 Leesbury Pike, Ste. 702  
Vienna, VA 22181  
P: 703.765.8284  
F: 703.765.8330  
www.lessardgroup.com



VIKI INC.  
3021 Century Blvd.  
Springtown, VA 22091  
P: 703.718.4000  
F: 703.718.2362  
www.viki.com

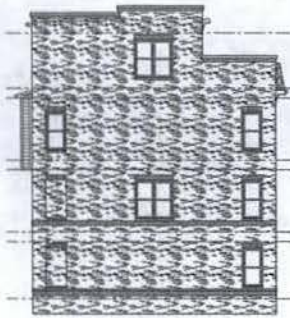


STUDIO 39  
8416 Greenleaf Dr., Ste. 100-A  
Alexandria, VA 22310  
P: 703.718.6000  
F: 703.718.6000  
www.studio39.com

EYA-146a.00



A-413



LEFT SIDE ELEVATION



FRONT ELEVATION



RIGHT SIDE ELEVATION



REAR ELEVATION



KEY PLAN

Saint Paul's College  
WASHINGTON, D.C.



BUILDING ELEVATIONS

BUILDING - 14

April 2, 2008



LESSARD GROUP INC.  
8032 Leesburg Pike, Ste. 700  
Vienna, VA 22182  
P: 703.790.0244  
F: 703.790.0330  
www.lessardgroup.com



VEKA, INC.  
2023 Century Blvd.  
Chrometown, MD 20874  
P: 301.514.4100  
F: 301.514.2382  
www.veka.com



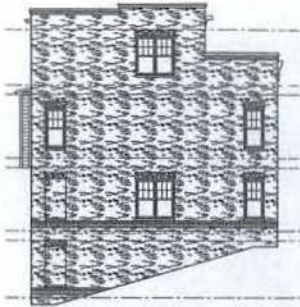
STUDIO 39  
8010 Greenleaf Dr., Ste. 100 A  
Arlington, VA 22210  
P: 703.274.8500  
F: 703.274.8503  
www.studio39.com

EYA.146a.00



A-414





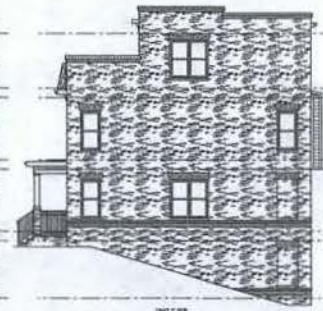
LEFT SIDE ELEVATION



FRONT ELEVATION



REAR ELEVATION



RIGHT SIDE ELEVATION



Saint Paul's College  
WASHINGTON, D.C.



**BUILDING ELEVATIONS**

BUILDING - 15  
April 2, 2008



LESSARD GROUP INC.  
8214 Landburg Pike, Ste. 700  
Manassas, VA 22110  
P: 703.795.8944  
F: 703.795.8238  
www.lessardgroup.com



VEKA, INC.  
29251 Century Blvd.  
Chrometown, MD 20614  
P: 301.618.4200  
F: 301.618.2282  
www.veka.com

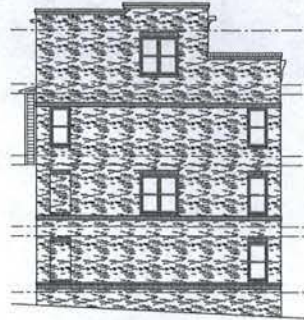


STUDIO 3B  
8418 Greenbelle Dr., Ste. 100 A  
Arlington, VA 22210  
P: 703.713.8900  
F: 703.713.6503  
www.studio3b.com

EYA.146a.00



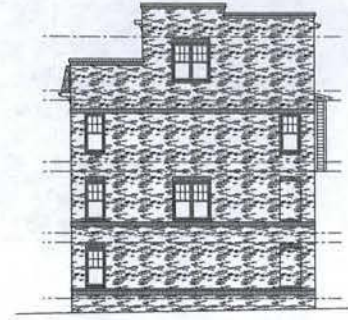
A-415



LEFT SIDE ELEVATION



FRONT ELEVATION



RIGHT SIDE ELEVATION



REAR ELEVATION



Saint Paul's College  
WASHINGTON, D.C.



BUILDING ELEVATIONS

BUILDING - 18  
April 2, 2008



LESSARD GROUP INC.  
8331 Leesburg Pike, Ste. 700  
Manassas, VA 22113  
P: 703.795.5744  
F: 703.795.5128  
www.lessardgroup.com



VIKA, INC.  
30331 Century Blvd.  
Greenbelt, MD 20746  
P: 301.314.4300  
F: 301.314.2341  
www.vika.com

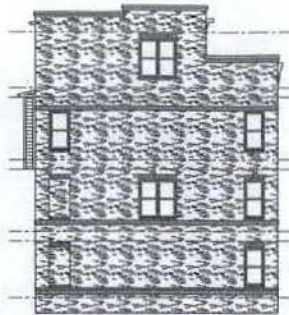


STUDIO 39  
8416 Greenfield Dr., Ste. 100-A  
Alexandria, VA 22304  
P: 703.728.6502  
F: 703.728.6303  
www.st39.com

EYA.146a.00



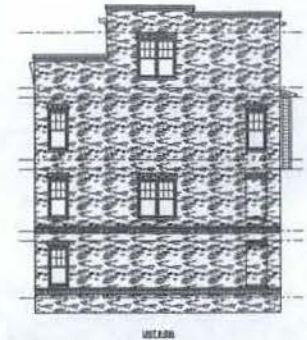
A-416



LEFT SIDE ELEVATION



FRONT COURTYARD ELEVATION



RIGHT SIDE ELEVATION



REAR ELEVATION



KEY PLAN

Saint Paul's College  
WASHINGTON, D.C.

THE NEIGHBORHOODS OF  
**EYA**

**BUILDING ELEVATIONS**

BUILDING - 17

April 2, 2008



**LESSARD GROUP INC.**  
8331 Leesbrook Pike, Ste. 700  
Vienna, VA 22181  
P: 703.762.8344  
F: 703.762.8108  
www.lessardgroup.com



**VEKA, INC.**  
2021 Century Blvd  
Cherrydale, MD 20744  
P: 703.816.4300  
F: 703.816.2381  
www.veka.com



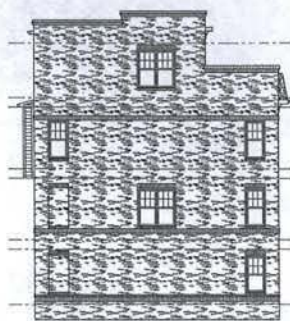
**STUDIO 39**  
3945 Greenway Dr., Ste. 100-A  
Arlington, VA 22204  
P: 703.713.8500  
F: 703.713.8502  
www.studio39.com

EVA-146a.00

1/8" = 1'-0"

EVA146a-417

A-417



LEFT SIDE ELEVATION



FRONT COURTYARD ELEVATION



RIGHT SIDE ELEVATION



REAR ELEVATION



KEY PLAN

Saint Paul's College  
WASHINGTON, D.C.



BUILDING ELEVATIONS

BUILDING - 18

April 2, 2008



LESSARD GROUP INC.  
8231 Leesburg Pike, Ste. 700  
Falls Church, VA 22042  
P: 703.790.8294  
F: 703.790.8298  
www.lessardgroup.com



VIKI, INC.  
2823 Century Blvd.  
Gainesville, VA 22039  
P: 703.727.4200  
F: 703.727.4202  
www.vki.com



STUDIO 39  
8416 Greenbriar Dr., Ste. 100-A  
Alexandria, VA 22309  
P: 703.727.4200  
F: 703.727.4202  
www.studio39.com

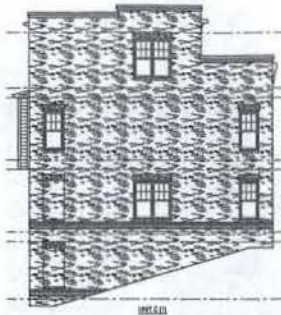
EVA.146a.00



1/8" = 1'-0"

EVA146a-418

A-418



LEFT SIDE ELEVATION



FRONT COURTYARD  
ELEVATION



RIGHT SIDE ELEVATION



REAR ELEVATION



KEY PLAN

Saint Paul's College  
WASHINGTON, D.C.

THE NEIGHBORHOODS OF  
**EYA**

**BUILDING ELEVATIONS**

BUILDING - 19

April 2, 2008



**LEBARD GROUP INC.**  
8322 Leeburg Hwy, Ste. 700  
Vienna, VA 22182  
P: 703.793.9194  
F: 703.793.9198  
www.lebardgroup.com



**VIKAL INC.**  
2225 Century Blvd.  
Germantown, MD 20874  
F: 301.261.4600  
F: 703.714.6202  
www.vikal.com

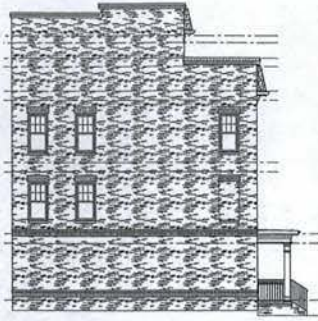


**STUDIO 39**  
8414 Greenleaf Ct, Ste. 100-4  
Arlington, VA 22213  
P: 703.714.6200  
F: 703.714.6202  
www.studio39.com

EYA 146a.00

1/8" = 1'-0" EYA146a-419

A-419



UNIT 01

LEFT SIDE ELEVATION



UNIT 01-A

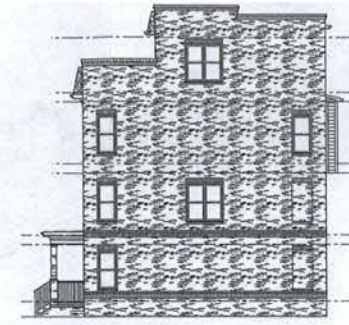
UNIT 01-B

UNIT 01-C

UNIT 01-D

UNIT 01-E

FRONT ELEVATION



UNIT 02

RIGHT SIDE ELEVATION



UNIT 01-A

UNIT 01-B

UNIT 01-C

UNIT 01-D

UNIT 01-E

REAR ELEVATION



KEY PLAN

Saint Paul's College  
WASHINGTON, D.C.



BUILDING ELEVATIONS

BUILDING - 20

April 2, 2008



LESSARD GROUP INC.  
923 Lombury Pk. Ste. 700  
Alexandria, VA 22304  
P: 703.700.8947  
F: 703.700.3308  
www.lessardgroup.com



VIKA, INC.  
2821 Century Blvd.  
Clarks Summit, MD 20874  
P: 301.261.4100  
F: 301.261.2292  
www.vika.com



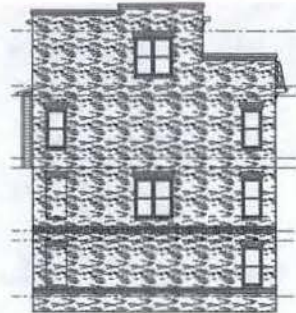
STUDIO 39  
8418 Greenleaf Dr. Ste. 100-A  
Alexandria, VA 22304  
P: 703.719.8500  
F: 703.719.8503  
www.studio39.com

EYA.146a.00



1/8" = 1'-0" EYA146A-420

A-420



WELLS

LEFT SIDE ELEVATION



WELLS

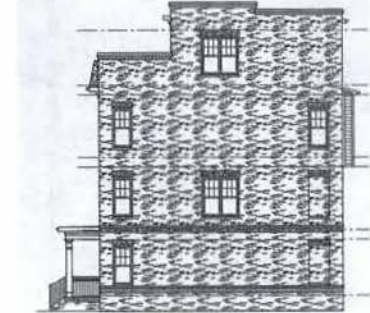
WELLS

WELLS

WELLS

WELLS

FRONT ELEVATION



WELLS

RIGHT SIDE ELEVATION



WELLS

WELLS

WELLS

WELLS

WELLS

REAR ELEVATION



KEY PLAN

Saint Paul's College  
WASHINGTON, D.C.



BUILDING ELEVATIONS

BUILDING - 21

April 2, 2008



LESSARD GROUP INC.  
8833 Leesylvania Pk. Ste. 700  
Manassas, VA 20108  
P: 703.760.0744  
F: 703.760.0128  
www.lginc.com



VIKA INC.  
2021 Century Blvd.  
Chantilly, VA 20151  
P: 703.818.4100  
F: 703.818.2482  
www.vika.com



STUDIO 39  
6424 Sullyfield Dr. Ste. 2004  
Alexandria, VA 22304  
P: 703.719.6500  
F: 703.719.6503  
www.studio39.com

EYA.146a.00



1/8" = 1'-0" EYA146a-421

A-421



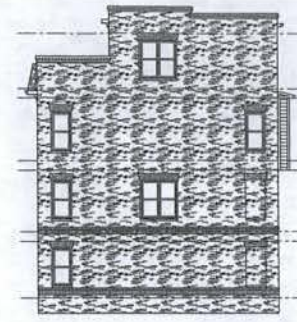
UNCG-BA

LEFT SIDE ELEVATION



UNCG-BA UNCG-BA UNCG-BA UNCG-BA UNCG-BA

FRONT ELEVATION



UNCG-BA

RIGHT SIDE ELEVATION



UNCG-BA UNCG-BA UNCG-BA UNCG-BA UNCG-BA

REAR ELEVATION



KEY PLAN

NOTE: ARCHITECT GROUP HAS REVIEWED ALL CITY ORDINANCES, ZONING AND OCCUPANCY PERMITS IN THESE PLANS. THESE PLANS ARE NOT TO BE INTERPRETED OR USED IN ANY MANNER THAT WOULD BE UNLAWFUL OR VIOLATE ANY CITY ORDINANCES, ZONING AND OCCUPANCY PERMITS. ANY SUCH VIOLATION IS THE RESPONSIBILITY OF THE USER OF THESE PLANS.

Saint Paul's College  
WASHINGTON, D.C.



BUILDING ELEVATIONS

BUILDING - 22

April 2, 2008



LESSARD GROUP INC.  
8025 Leesburg Pike, Ste. 700  
Vienna, VA 22181  
P: 703.762.8747  
F: 703.762.8338  
www.lessardgroup.com



VIKA INC.  
2021 Century Blvd.  
Germantown, MD 20874  
P: 301.518.4800  
F: 301.518.2292  
www.vika.com



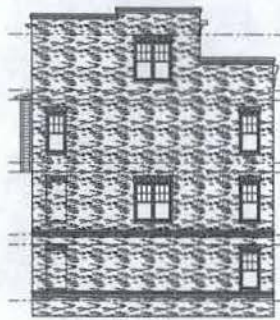
STUDIO 39  
8415 Smeadow Dr. Ste. 100-A  
Alexandria, VA 22315  
P: 703.718.8802  
F: 703.718.8503  
www.studio39.com

EYA.146a.00

1/8" = 1'-0" EYA146A-422

A-422

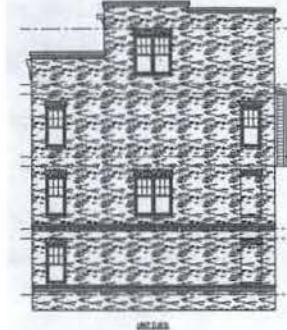




RIGHT SIDE ELEVATION



FRONT ELEVATION



LEFT SIDE ELEVATION



REAR ELEVATION



KEY PLAN

Saint Paul's College  
WASHINGTON, D.C.

THE NEIGHBORHOODS OF  
**EYA**

**BUILDING ELEVATIONS**

BUILDING - 23  
April 2, 2008



**LESSARD GROUP INC.**  
8221 Leeburg Pike, Ste. 700  
Vienna, VA 22182  
P: 703.790.8044  
F: 703.790.8328  
www.lessardgroup.com



**VIFA INC.**  
3557 Gateway Blvd.  
Spartanburg, SC 29574  
P: 803.534.4640  
F: 803.534.2348  
www.vifa.com

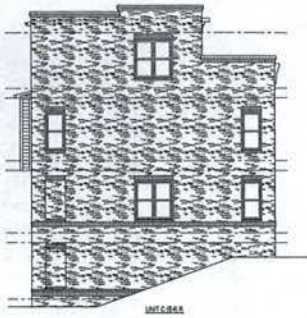


**STUDIO 39**  
4014 Woodmonte Ct., Ste. 100-A  
Arlington, VA 22219  
P: 703.233.4900  
F: 703.718.4500  
www.studio39.com

EYA.146a.00



A-423



LEFT SIDE ELEVATION



FRONT ELEVATION



RIGHT SIDE ELEVATION



REAR ELEVATION



KEY PLAN

Saint Paul's College  
WASHINGTON, D.C.



BUILDING ELEVATIONS

BUILDING - 24

April 2, 2008



LESSARD GROUP INC.  
8521 Leesburg Pike, Ste. 700  
Vienna, VA 22116  
P: 703.798.8244  
F: 703.798.8288  
www.lessardgroup.com



VIKA, INC.  
20221 Century Blvd.  
Germantown, MD 20874  
P: 301.858-6700  
F: 301.858-2382  
www.vika.com



STUDIO 39  
8426 Greenleaf Cr. Ste. 100-A  
Alexandria, VA 22310  
P: 703.718.8500  
F: 703.718.8503  
www.studio39.com

EYA.146a.00



1/8" = 1'-0" EYA146a-024

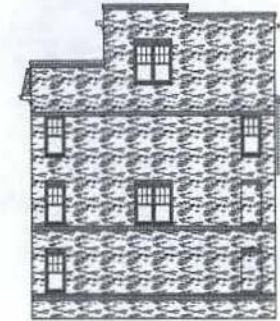
A-424



LEFT SIDE ELEVATION



FRONT ELEVATION



RIGHT SIDE ELEVATION



REAR ELEVATION



KEY PLAN

Saint Paul's College  
WASHINGTON, D.C.



BUILDING ELEVATIONS

BUILDING - 25  
April 2, 2008



LESARD GROUP INC.  
8221 Lesford Pike, Ste. 200  
Manassas, VA 22110  
P: 703.790.2014  
F: 703.790.8128  
www.lesardgroup.com

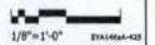


VIKI, INC.  
2021 Century Blvd.  
Dumfries, VA 22024  
P: 703.816.4100  
F: 703.816.2182  
www.viki.com



STUDIO 39  
812 Broadview Ct., Ste. 100-A  
Alexandria, VA 22304  
P: 703.718.6800  
F: 703.718.6202  
www.studio39.com

EYA.146a.00



A-425



LEFT SIDE ELEVATION



FRONT ELEVATION



RIGHT SIDE ELEVATION



REAR ELEVATION



KEY PLAN

Saint Paul's College  
WASHINGTON, D.C.



BUILDING ELEVATIONS

BUILDING - 26  
April 2, 2008



LENSARD GROUP INC.  
8221 Leesburg Pike, Ste. 700  
Vienna, VA 22181  
P: 703.760.8144  
F: 703.760.8328  
www.lensardgroup.com



VIKI INC.  
2625 Century Blvd  
Dumfries, VA 22024  
P: 703.518.4500  
F: 703.518.2182  
www.viki.com



STUDIO 59  
4424 Sullyfield Dr., Ste. 100-A  
Alexandria, VA 22310  
P: 703.518.4500  
F: 703.518.4503  
www.studio59.com

EYA-146a.00



A-426



LEFT SIDE ELEVATION



FRONT ELEVATION



RIGHT SIDE ELEVATION



REAR ELEVATION



KEY PLAN

Saint Paul's College  
WASHINGTON, D.C.



BUILDING ELEVATIONS

BUILDING - 27  
April 02, 2008



LESSARD GROUP INC.  
8321 Leesburg Pike, Ste. 700  
Manassas, VA 22181  
P: 703.790.8344  
F: 703.790.8338  
www.lessardgroup.com



VTKA, INC.  
2091 Century Blvd.  
Springtown, MD 20874  
P: 301.518.4500  
F: 301.416.2382  
www.vtkainc.com



STUDIO 39  
8424 Siskiyew Dr. Ste. 105-A  
Alexandria, VA 22318  
P: 703.715.8500  
F: 703.715.8503  
www.studio39.com

EYA.146a.00



EYA146a-427

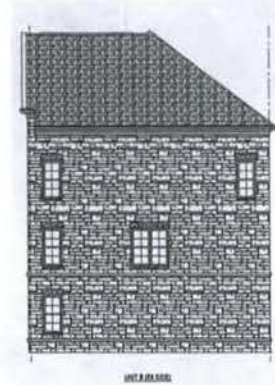
A-427



LEFT SIDE ELEVATION



FRONT ELEVATION



RIGHT SIDE ELEVATION



REAR ELEVATION



Saint Paul's College  
WASHINGTON, D.C.



BUILDING ELEVATIONS

BUILDING - 28  
April 2, 2008

**LESSARD GROUP INC.**  
8311 Leesburg Pike, Ste. 700  
Vienna, VA 22181  
P. 703.760.8244  
F. 703.760.8388  
www.lessardgroup.com

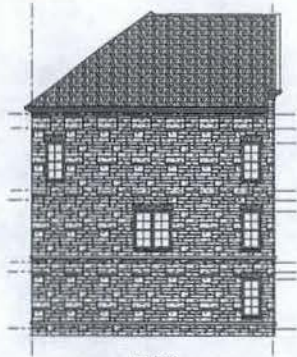
**VIKA**  
VIKA, INC.  
2831 Century Blvd.  
Baltimore, MD 21204  
P. 410.516.4100  
F. 410.516.2262  
www.vika.com

**STUDIO 39**  
6418 Greenway Dr., Ste. 100 A  
Arlington, VA 22208  
P. 703.718.6602  
F. 703.718.6403  
www.studio39.com

EVA.146a.00



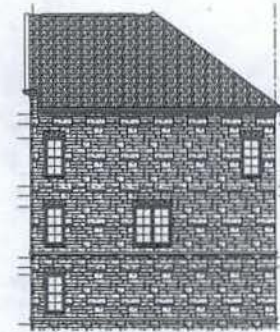
A-428



LEFT SIDE ELEVATION



FRONT COURTYARD ELEVATION



RIGHT SIDE ELEVATION



REAR ELEVATION



KEY PLAN

Saint Paul's College  
WASHINGTON, D.C.

THE NEIGHBORHOODS OF  
**EYA**

**BUILDING ELEVATIONS**

BUILDING - 29

April 2, 2008



**LESGARD GROUP INC.**  
8332 Leesburg Pike, Ste. 702  
Vienna, VA 22184  
P: 703.763.8244  
F: 703.763.8238  
www.lesgardgroup.com



**VIXA, INC.**  
2023 Century Blvd.  
Charlottesville, VA 22904  
P: 703.851.4500  
F: 703.851.2252  
www.vixa.com



**STUDIO 39**  
9418 Brimstone Dr., Ste. 100-A  
Alexandria, VA 22304  
P: 703.718.6800  
F: 703.718.6553  
www.studio39.com

EYA 146a.00



A-429



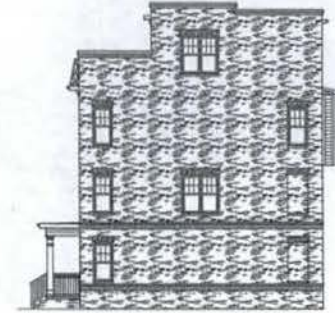
UNCLER

LEFT SIDE ELEVATION



UNCLER UNCLER UNCLER UNCLER UNCLER UNCLER

FRONT ELEVATION



UNCLER

RIGHT SIDE ELEVATION



UNCLER UNCLER UNCLER UNCLER UNCLER UNCLER

REAR ELEVATION



KEY PLAN

Saint Paul's College  
WASHINGTON, D.C.



BUILDING ELEVATIONS

BUILDING - 30  
April 2, 2008



LESSARD GROUP INC.  
8321 Leesburg Pike, Ste. 700  
Manassas, VA 22187  
P: 703.762.8394  
F: 703.762.8328  
www.lessardgroup.com



VIVA, INC.  
20231 Century Blvd.  
Chesapeake, VA 23064  
P: 703.866.4300  
F: 703.866.2363  
www.viva.com



STUDIO 38  
4418 Greenbelt Cr., Ste. 100-A  
Manassas, VA 22187  
P: 703.715.8200  
F: 703.715.8203  
www.studio38.com

EYA.146a.00



A-430





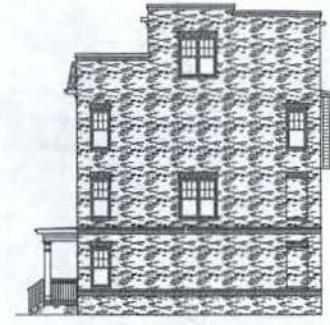
UNIT 201A

LEFT SIDE ELEVATION



UNIT 201B UNIT 201C UNIT 201D UNIT 201E UNIT 201F UNIT 201G

FRONT ELEVATION



UNIT 201H

RIGHT SIDE ELEVATION



UNIT 201I UNIT 201J UNIT 201K UNIT 201L UNIT 201M UNIT 201N

REAR ELEVATION



KEY PLAN

Saint Paul's College  
WASHINGTON, D.C.



BUILDING ELEVATIONS

BUILDING - 30

April 2, 2008



LESSARD GROUP INC.  
8221 Leesburg Pike, Ste. 700  
Arlington, VA 22204  
P: 703.790.8744  
F: 703.790.6328  
www.lessardgroup.com



VEKA, INC.  
3021 Century Blvd.  
Chesapeake, VA 23034  
P: 703.718.4330  
F: 703.718.2242  
www.veka.com



STUDIO 39  
8415 Greenleaf Dr. Ste. 200-A  
Alexandria, VA 22304  
P: 703.718.4330  
F: 703.718.6353  
www.studio39.com

EYA.146a.00



1/8" = 1'-0"

EYA.146a.01

A-431



UNCLASIFIED

LEFT SIDE ELEVATION



UNCLASIFIED UNCLASIFIED UNCLASIFIED UNCLASIFIED UNCLASIFIED UNCLASIFIED UNCLASIFIED

FRONT ELEVATION



UNCLASIFIED

RIGHT SIDE ELEVATION



REAR ELEVATION



KEY PLAN

Saint Paul's College  
WASHINGTON, D.C.



**BUILDING ELEVATIONS**

BUILDING - 32

April 2, 2008



LESSARD GROUP INC.  
8221 Leesburg Pike, Ste. 700  
Falls Church, VA 22041  
P: 703.790.8244  
F: 703.790.8248  
www.lessardgroup.com



VIKA INC.  
20251 Century Blvd.  
Greenbelt, MD 20740  
P: 301.814.4100  
F: 301.814.2162  
www.vika.com



STUDIO 39  
3616 Greenbelt Dr. Ste. 100-A  
Alexandria, VA 22304  
P: 703.714.4500  
F: 703.714.9163  
www.studio39.com

EYA.146a.00

1/8" = 1'-0"

EYA146a-432

A-432



LEFT SIDE ELEVATION

FRONT ELEVATION

RIGHT SIDE ELEVATION



REAR ELEVATION



KEY PLAN

Saint Paul's College  
WASHINGTON, D.C.

THE NEIGHBORHOODS OF  
**EYA**

**BUILDING ELEVATIONS**

BUILDING - 31

April 2, 2008



**LESSARD GROUP INC.**  
8221 Leesburg Pike, Ste. 700  
Farming, VA 22161  
P: 703.790.2914  
F: 703.790.2128  
www.lessardgroup.com



**VIKA, INC.**  
2021 Century Blvd.  
Chesapeake, VA 23064  
P: 703.818.4100  
F: 703.818.2182  
www.vikainc.com



**STUDIO 39**  
8424 Greenway Ct., Ste. 105-A  
Arlington, VA 22203  
P: 703.718.8200  
F: 703.718.8202  
www.studio39.com

EYA-146a.00

1/8" = 1'-0" EYA-146a-423

A-433



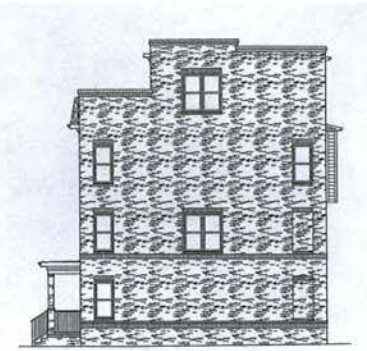
UNIT 100A

LEFT SIDE ELEVATION



UNIT 100B UNIT 100C UNIT 100D UNIT 100E UNIT 100F UNIT 100G UNIT 100H UNIT 100I UNIT 100J UNIT 100K

FRONT ELEVATION



UNIT 100L

RIGHT SIDE ELEVATION



REAR ELEVATION



KEY PLAN

Saint Paul's College  
WASHINGTON, D.C.

THE NEIGHBORHOODS OF  
**EYA**

**BUILDING ELEVATIONS**

BUILDING - 34  
April 2, 2008

**LESSARD GROUP INC.**  
8531 Leesburg Pike, Ste. 700  
Manassas, VA 22182  
P: 703.790.8544  
F: 703.790.8330  
www.lggroup.com

**VIVA, INC.**  
2021 Century Blvd.  
Gummersville, TN 37094  
P: 703.718.6500  
F: 703.718.6503  
www.viva.com

**STUDIO 30**  
8416 Greenleaf Dr. Ste. 100-A  
Alexandria, VA 22303  
P: 703.718.6500  
F: 703.718.6503  
www.studio30.com

EYA.146a.00

1/8" = 1'-0" EYA146a-034

A-434



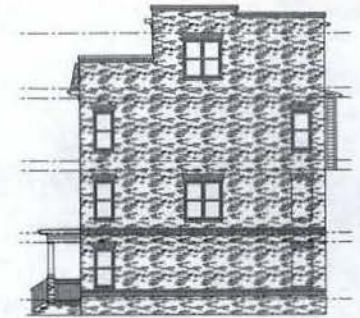
UNCSB.A

LEFT SIDE ELEVATION



UNCSB.A UNCSB.A UNCSB.A UNCSB.A UNCSB.A UNCSB.A UNCSB.A

FRONT ELEVATION



UNCSB.B

RIGHT SIDE ELEVATION



UNCSB.A UNCSB.B UNCSB.C UNCSB.D UNCSB.E UNCSB.F UNCSB.A

REAR ELEVATION



KEY PLAN

Saint Paul's College  
WASHINGTON, D.C.

THE NEIGHBORHOODS OF  
**EYA**

**BUILDING ELEVATIONS**

BUILDING - 35

April 2, 2008



**LESNARD GROUP INC.**  
8121 Leesboro Pike, Ste. 700  
Arling, VA 22202  
P: 703.786.0294  
F: 703.786.9228  
www.lesnardgroup.com



**VIKA INC.**  
3025 Century Blvd.  
Chesapeake, VA 23064  
P: 703.718.4300  
F: 703.718.4302  
www.vika.com



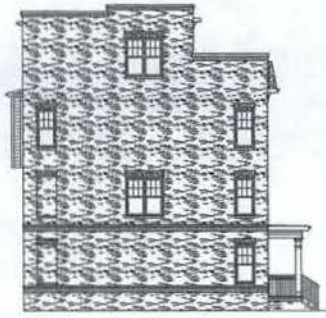
**STUDIO 39**  
4018 Brookdale Dr., Ste. 100-A  
Arling, VA 22210  
P: 703.718.4000  
F: 703.718.4002  
www.studio39.com

EYA.146a.00

1/8" = 1'-0"

EYA146a-025

A-435



UNIT 300A

LEFT SIDE ELEVATION



UNIT 300B UNIT 300C

FRONT ELEVATION



UNIT 300A

RIGHT SIDE ELEVATION



UNIT 300B UNIT 300C

REAR ELEVATION



KEY PLAN

Saint Paul's College  
WASHINGTON, D.C.



**BUILDING ELEVATIONS**

BUILDING - 30

April 2, 2008



LESSARD GROUP INC.  
8525 Leesburg Pike, Ste. 700  
Manassas, VA 22110  
P: 703.788.8004  
F: 703.788.8338  
www.lessardgroup.com



VIXA, INC.  
2001 Century Blvd.  
Dorchester, MA 02091  
P: 508.514.4000  
F: 508.514.2382  
www.vixa.com

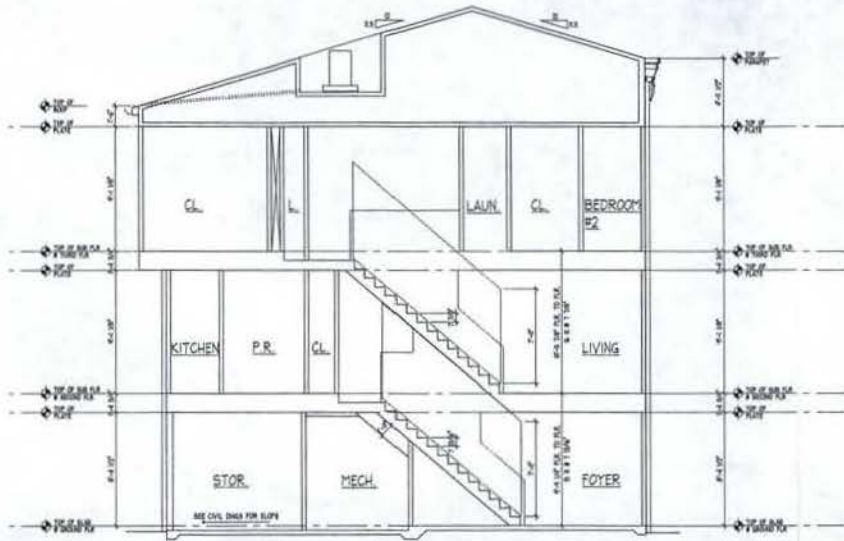


STUDIO 39  
8440 Greenleaf Dr., Ste. 100-A  
Alexandria, VA 22310  
P: 703.519.8900  
F: 703.519.8903  
www.studio39.com

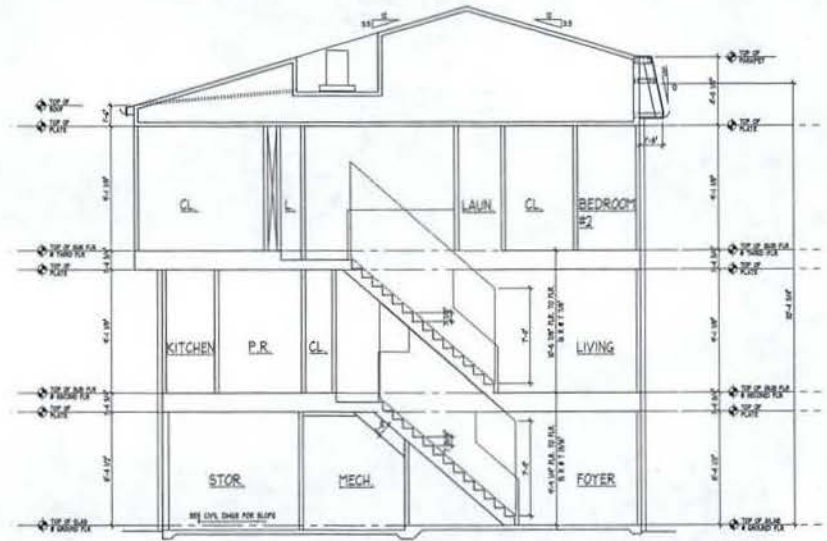
EYA.146a.00



A-436



BUILDING SECTION UNIT A -Standard (w/ Parapet)



BUILDING SECTION UNIT A -Standard

Saint Paul's College  
WASHINGTON, D.C.



BUILDING SECTIONS

UNIT - A  
April 2, 2008



LESSARD GROUP INC.  
8325 Landburg Pike, Ste. 705  
Harrisburg, PA 17111  
P: 717.760.0014  
F: 717.760.0229  
www.lessardgroup.com



VIKI INC.  
2021 Century Blvd.  
Crownsville, MD 21031  
P: 410.816.8100  
F: 410.816.2161  
www.viki.com

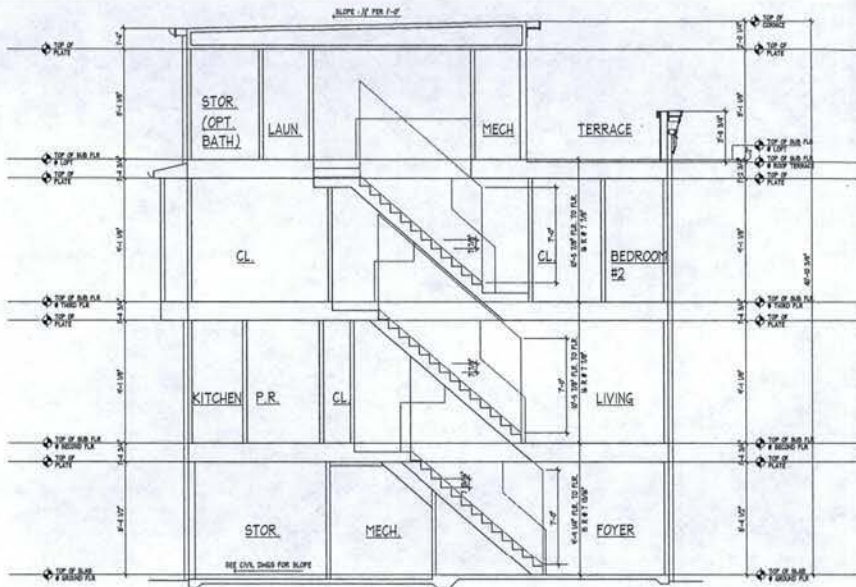


STUDIO 3P  
8415 Greenbale Dr., Ste. 101A  
Arlington, VA 22219  
P: 703.718.8500  
F: 703.718.8503  
www.studio3p.com

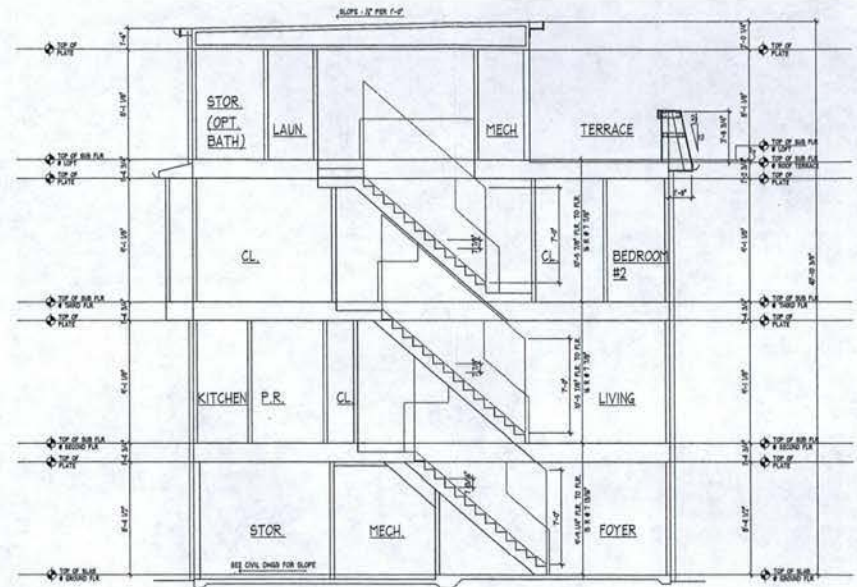
EYA.146a.00



A-300



BUILDING SECTION UNIT A - Opt. Loft Terrace (w/ Parapet)



BUILDING SECTION UNIT A - Opt. Loft Terrace

Saint Paul's College  
WASHINGTON, D.C.



BUILDING SECTIONS

UNIT TYPE 'A'

April 2, 2008



LESSARD GROUP INC.  
8331 Leesburg Pike, Ste. 750  
Falls Church, VA 22041  
P: 703.780.8744  
F: 703.780.8708  
www.lessardgroup.com



VIKI INC.  
30531 Century Blvd.  
Greenwood, MD 20711  
P: 301.818.4100  
F: 301.818.2342  
www.viki.com



STUDIO 39  
8416 Greenbelt Rd. Ste. 100-A  
Alexandria, VA 22304  
P: 703.719.8500  
F: 703.719.8503  
www.studio39.com

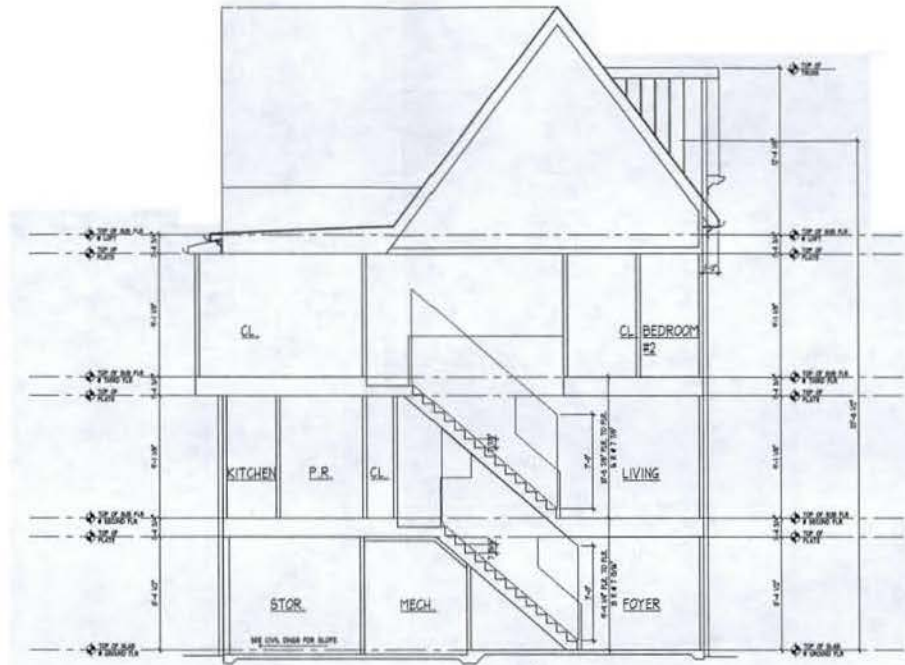
EYA.146a.00



A-301







BUILDING SECTION UNIT A - Alt. Stone Elevation (Standard)

Saint Paul's College  
WASHINGTON, D.C.



BUILDING SECTIONS

UNIT TYPE 'A'  
April 2, 2008



LESSARD GROUP INC.  
8531 Leesburg Pike, Ste. 700  
Manassas, VA 22117  
P: 703.760.8344  
F: 703.760.8328  
www.lesgardgroup.com



VIKA INC.  
20251 Century Blvd.  
Chantilly, VA 20151  
P: 703.818.4100  
F: 703.814.2222  
www.vika.com

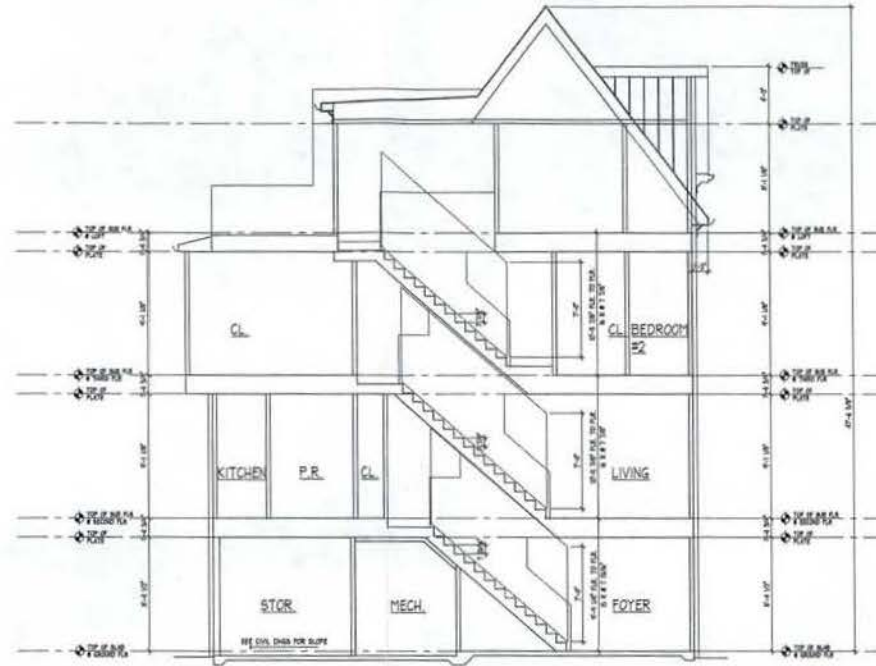


STUDIO 39  
8118 Creechdale Dr., Ste. 100-A  
Alexandria, VA 22310  
P: 703.718.8500  
F: 703.718.8503  
www.studio39.com

EYA.145a.00



A-303



BUILDING SECTION UNIT A - Alt. Stone Elevation (Optional)

Saint Paul's College  
WASHINGTON, D.C.



BUILDING SECTIONS

UNIT TYPE 'A'  
April 2, 2008



LESSARD GROUP INC.  
8322 Leesburg Pike, Ste. 101  
Falls Church, VA 22040  
P. 703.798.8194  
F. 703.798.8328  
www.lessardgroup.com



VIKAL INC.  
2023 Century Blvd.  
Germantown, MD 20874  
P. 301.918.4100  
F. 301.918.2181  
www.vikal.com

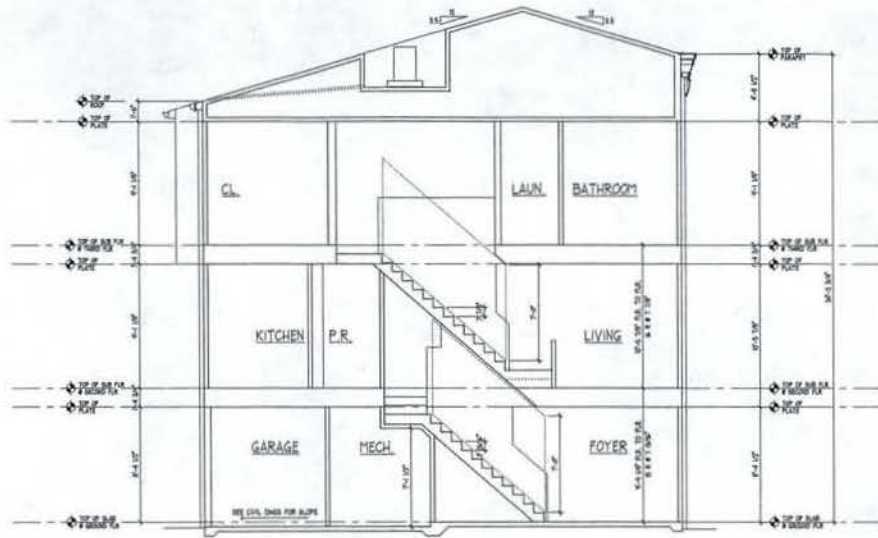


STUDIO 39  
3014 Greenleaf Dr., Ste. 300-A  
Alexandria, VA 22310  
P. 703.714.8500  
F. 703.714.8503  
www.studio39.com

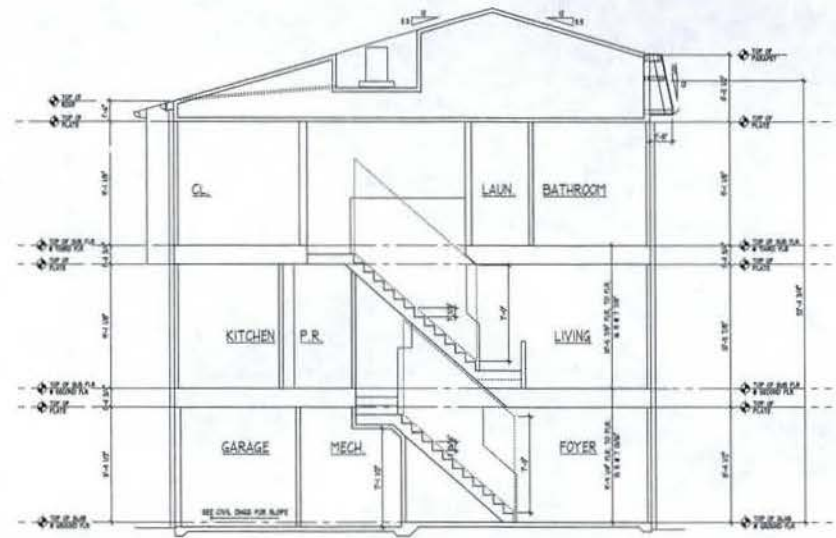
EYA.146a.00



A-304



BUILDING SECTION UNIT B -Standard (w/ Parapet)



BUILDING SECTION UNIT B -Standard

Saint Paul's College  
WASHINGTON, D.C.



BUILDING SECTIONS

UNIT TYPE 'B'

April 2, 2008



LESSARD GROUP INC.  
9331 Leesburg Pike, Ste. 100  
Manassas, VA 22110  
P: 703.795.8141  
F: 703.795.5374  
www.lessardgroup.com



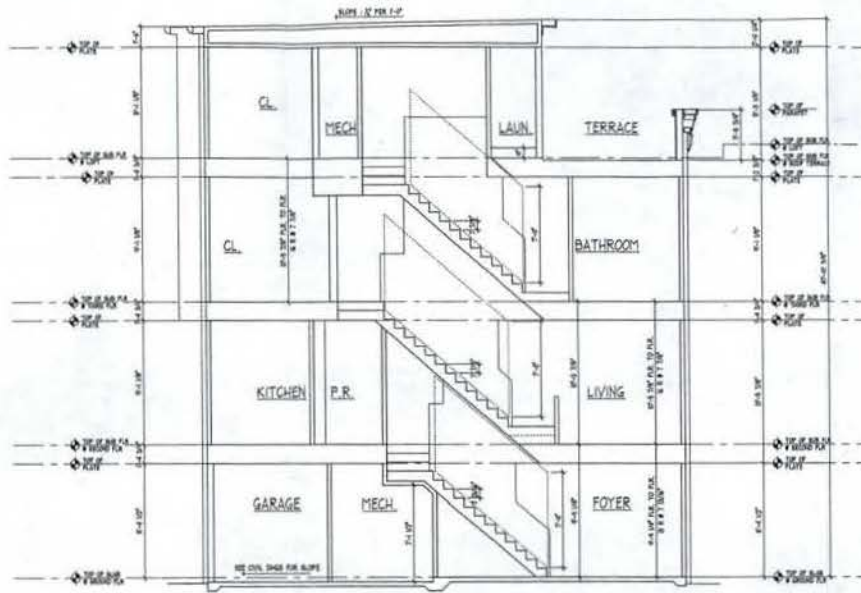
VEKA, INC.  
2025 Century Blvd  
Cherrydale, MD 20811  
P: 301.354-4100  
F: 301.955.2352  
www.veka.com



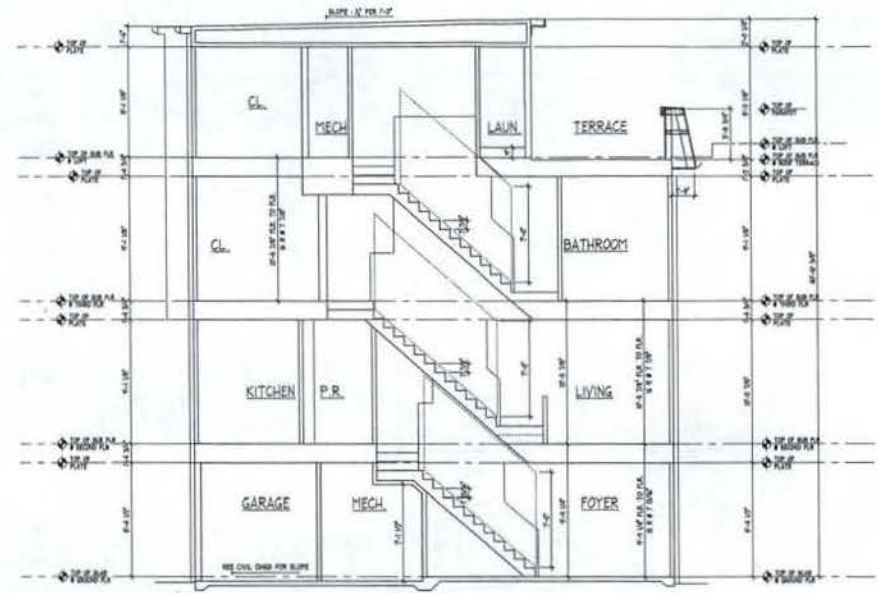
STUDIO 39  
8422 Inverdale Dr., Ste. 100 A  
Alexandria, VA 22310  
P: 703.718.8100  
F: 703.718.8833  
www.studio39.com

EYA.146a.00





BUILDING SECTION UNIT B - Opt. Loft Terrace  
(w/ Parapet)



BUILDING SECTION UNIT B - Opt. Loft Terrace

Saint Paul's College  
WASHINGTON, D.C.

THE NEIGHBORHOODS OF  
**EYA**

**BUILDING SECTIONS**

UNIT TYPE 'B'

April 2, 2008



**LESSARD GROUP INC.**  
8221 Leesburg Pike, Ste. 700  
Manassas, VA 22182  
P: 703.790.2000  
F: 703.790.8128  
www.lessardgroup.com



**VIKI INC.**  
30011 Century Blvd.  
Greenbelt, MD 20821  
P: 301.318.4100  
F: 301.318.2344  
www.viki.com

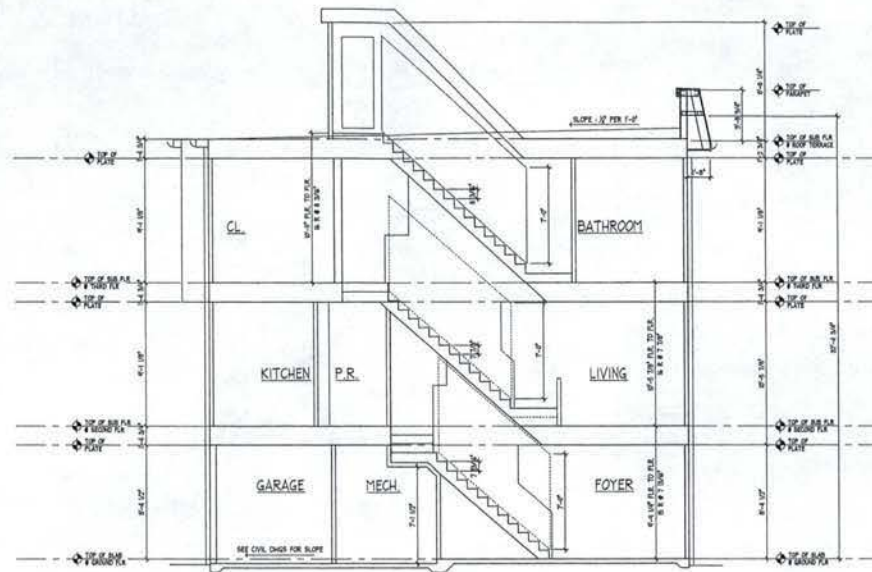


**STUDIO 39**  
8423 Coonella Dr., Ste. 100-A  
Arlington, VA 22210  
P: 703.713.4500  
F: 703.713.4502  
www.studio39.com

EYA-146a.00

1/4" = 1'-0" EYA-146a-311

A-311



BUILDING SECTION UNIT B - Opt. Roof Access

Saint Paul's College  
WASHINGTON, D.C.



BUILDING SECTIONS

UNIT TYPE 'B'  
April 2, 2008



LESSARD GROUP INC.  
833 Landburg Pike, Ste. 700  
Shawnee, VA 22151  
P: 703.795.8244  
F: 703.795.8328  
www.lessardgroup.com



VIFA, INC.  
35251 Century Blvd.  
Chantilly, VA 22021  
P: 703.818.4300  
F: 703.818.2260  
www.vifa.com

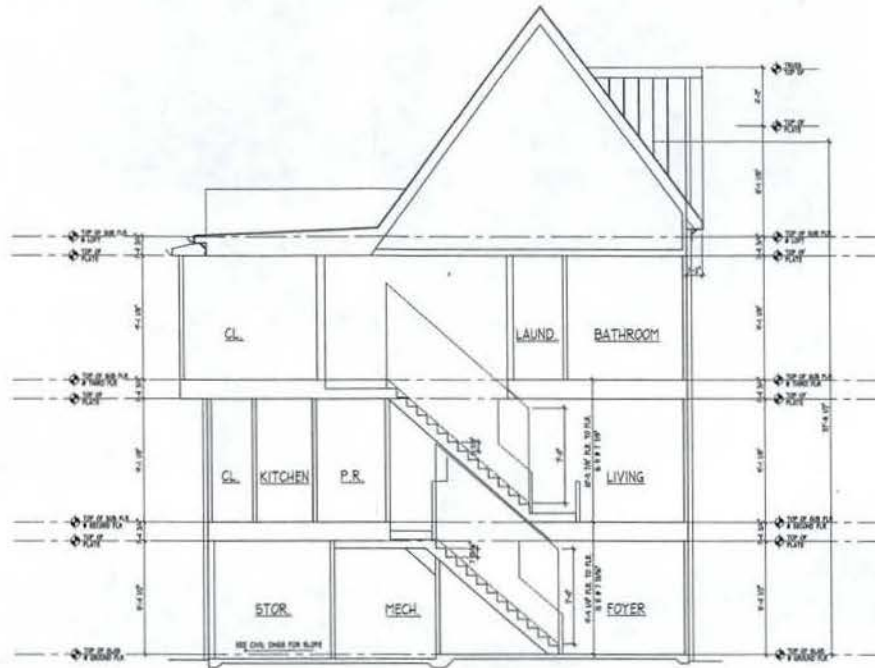


STUDIO 30  
6116 Greenleaf Dr. Ste. 100-A  
Arlington, VA 22203  
P: 703.718.6500  
F: 703.718.6503  
www.studio30.com

EYA.146a.00



A-312



BUILDING SECTION UNIT B - Alt. Stone Elevation (Standard)

Saint Paul's College  
WASHINGTON, D.C.

THE NEIGHBORHOODS OF  
**EYA**

**BUILDING SECTIONS**

UNIT TYPE 'B'  
April 2, 2008



**LESSARD GROUP INC.**  
8321 Leesburg Pike, Ste. 700  
Vienna, VA 22188  
P: 703.760.0944  
F: 703.760.9328  
www.lessardgroup.com



**VEKA, INC.**  
2011 Caraway Blvd  
Charlottesville, VA 22904  
P: 804.636.6000  
F: 804.636.2382  
www.veka.com

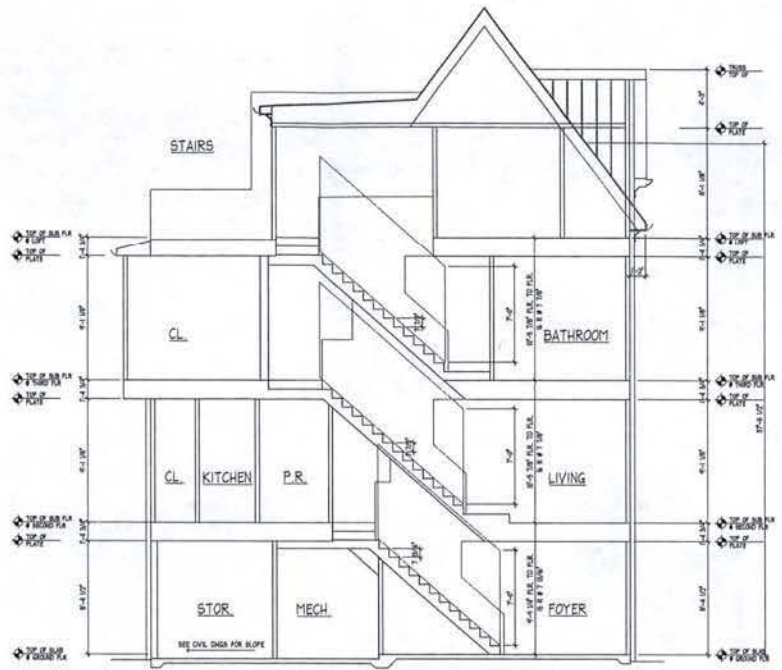


**STUDIO 39**  
6155 Greenway Dr., Ste. 100-A  
Arlington, VA 22215  
P: 703.742.8500  
F: 703.743.5003  
www.studio39.com

EYA.146a.00

1/4" = 1'-0"  
EYA146a-00

A-313



BUILDING SECTION UNIT B - Alt. Stone Elevation (Optional)

Saint Paul's College  
WASHINGTON, D.C.



BUILDING SECTIONS

UNIT TYPE 'B'

April 2, 2008



LESSARD GROUP INC.  
6321 Landburg Pike, Ste. 705  
Vienna, VA 22183  
P: 703.790.5044  
F: 703.790.8728  
www.lessardgroup.com



VIXA INC.  
2023 Century Blvd.  
Germantown, MD 20874  
P: 703.718.4100  
F: 703.818.2262  
www.vixainc.com



STUDIO 39  
1411 Greenleaf Cr., Ste. 100-A  
Alexandria, VA 22304  
P: 703.718.6000  
F: 703.718.6003  
www.studio39.com

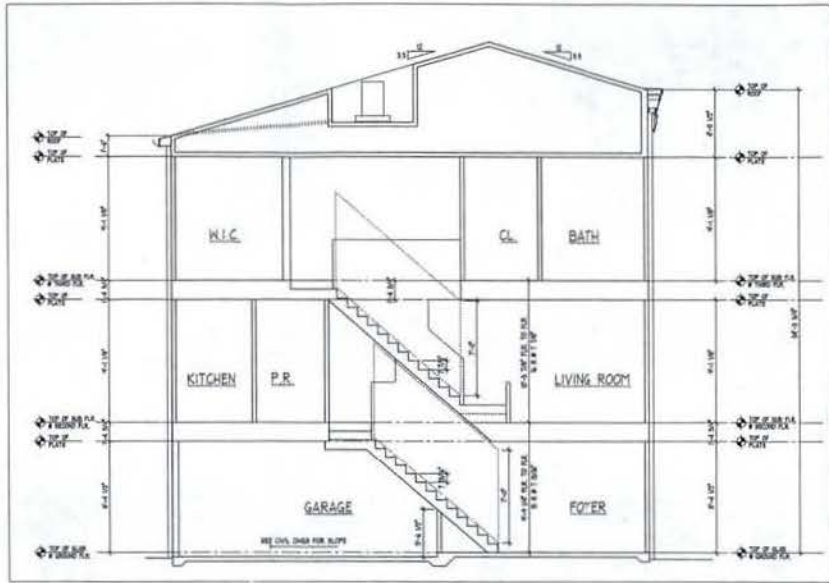
EYA.146a.00



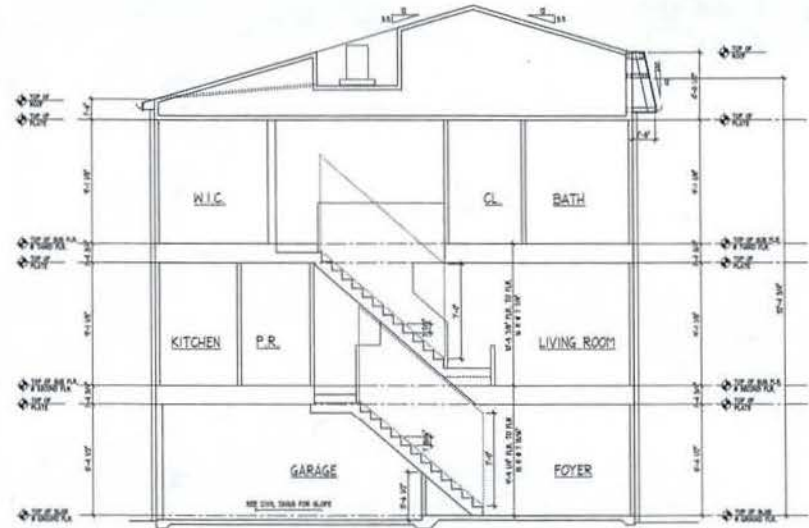
1/4" = 1'-0" EYA146a-00

A-314





BUILDING SECTION UNIT C -Standard  
(w/ Parapet)



BUILDING SECTION UNIT C -Standard

Saint Paul's College  
WASHINGTON, D.C.

THE NEIGHBORHOODS OF  
**EYA**

BUILDING SECTIONS

UNIT TYPE 'C'

April 2, 2008



LESSARD GROUP INC.  
933 Landon Pl. Ste. 102  
Alexandria, VA 22304  
P: 703.799.8284  
F: 703.799.8288  
www.lessardgroup.com



VIKA, INC.  
2025 Century Blvd.  
Germantown, MD 20874  
P: 301.864.4500  
F: 301.864.2382  
www.vika.com



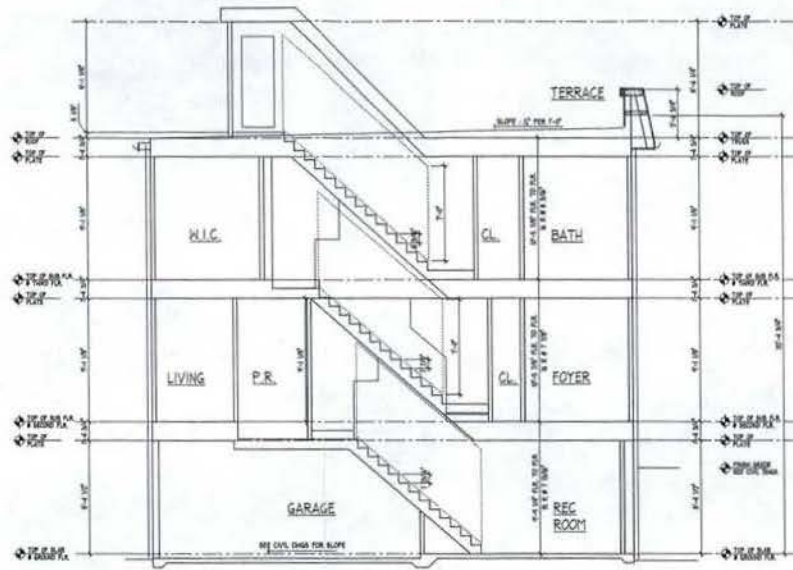
STUDIO 39  
8420 Greenleaf Dr. Ste. 100-A  
Alexandria, VA 22310  
P: 703.743.6500  
F: 703.743.6293  
www.studio39.com

EYA.146a.00

1/4" = 1'-0"  
EYA146a-220

A-320





BUILDING SECTION UNIT C - Opt. Roof Access

Saint Paul's College  
WASHINGTON, D.C.



BUILDING SECTIONS

UNIT TYPE 'C'

April 2, 2008



LESSARD GROUP INC.  
8231 Leesburg Pkwy. Ste. 700  
Vienna, VA 22181  
P: 703.762.8344  
F: 703.762.8328  
www.lessardgroup.com



VIKI, INC.  
2021 Century Blvd.  
Chesapeake, MD 20764  
P: 703.763.4300  
F: 703.763.2300  
www.viki.com



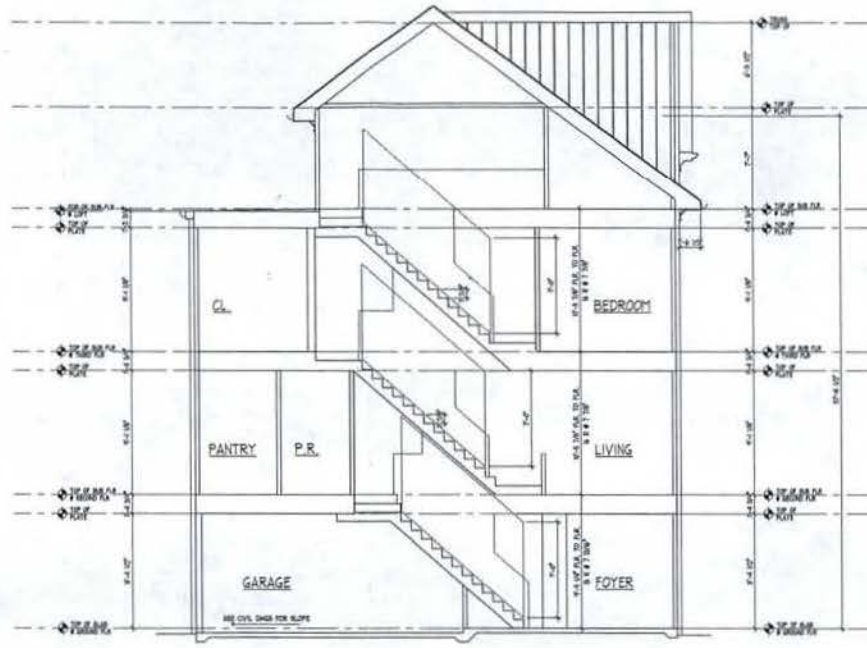
STUDIO 3P  
8416 Greenbush Dr. Ste. 300A  
Chesapeake, VA 22018  
P: 703.773.4800  
F: 703.773.4800  
www.studio3p.com

EYA.146a.00



A-322

Notes: All drawings are the property of the architect. No part of this drawing may be reproduced or transmitted in any form or by any means, electronic, mechanical, photocopying, recording, or by any information storage and retrieval system, without the prior written permission of the architect. The architect shall not be responsible for any errors or omissions on these drawings.



BUILDING SECTION UNIT C - Alt. Stone Elevation (Optional)

Saint Paul's College  
WASHINGTON, D.C.



BUILDING SECTIONS

UNIT TYPE 'A'

April 2, 2008



LESSARD GROUP INC.  
8311 Leesburg Pike, Ste. 700  
Manassas, VA 22181  
P: 703.790.8944  
F: 703.790.8228  
www.lessardgroup.com



VIKI INC.  
20251 Century Blvd.  
Greenwood, MD 21044  
P: 301.218.4100  
F: 301.218.2142  
www.viki.com

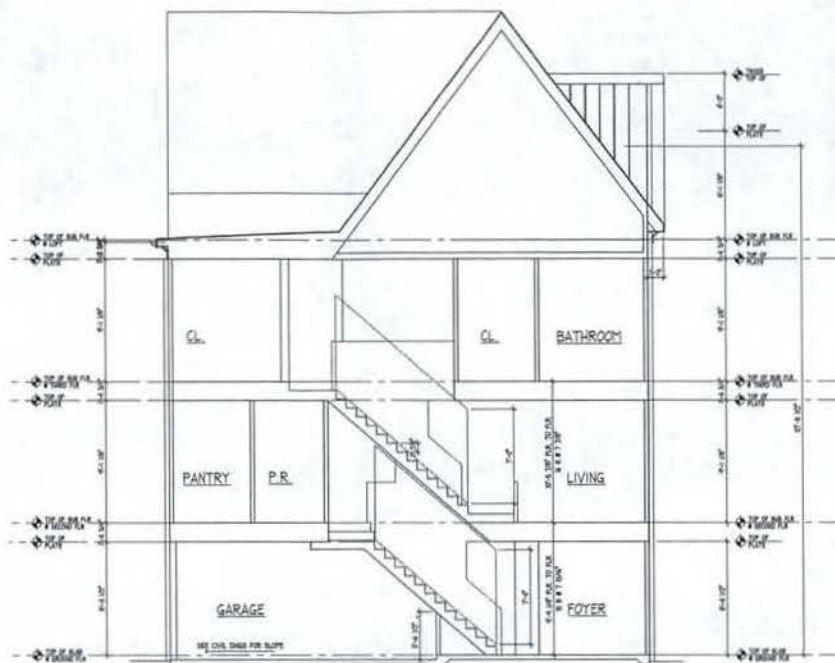


STUDIO 39  
4618 Brookside Dr., Ste. 101A  
Arlington, VA 22204  
P: 703.718.8100  
F: 703.718.8103  
www.studio39.com

EYA.146a.00



A-324



BUILDING SECTION UNIT C - Alt. Stone Elevation (Standard)

Saint Paul's College  
WASHINGTON, D.C.



BUILDING SECTIONS

UNIT TYPE 'C'

April 2, 2008



LESSARD GROUP INC.  
8221 Landover Pike, Ste. 700  
Washi, VA 22181  
P: 703.760.8314  
F: 703.760.8328  
www.lessardgroup.com



VIXA INC.  
24025 Century Blvd.  
Compton, MD 20614  
P: 202.884.4500  
F: 202.884.2282  
www.vixa.com



STUDIO 39  
4418 Greenleaf Dr., Ste. 100-A  
Alexandria, VA 22318  
P: 703.715.4800  
F: 703.715.4803  
www.studio39.com

EYA.146a.00



A-323