



LEFT FRONT ELEVATION

FRONT COURTYARD ELEVATION

RIGHT FRONT ELEVATION



LEFT SIDE REAR ELEVATION



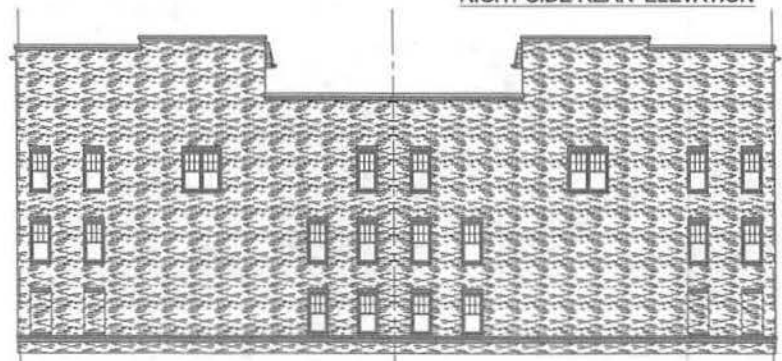
RIGHT SIDE REAR ELEVATION



LEFT SIDE ELEVATION



RIGHT SIDE ELEVATION



REAR ELEVATION



KEY PLAN

Saint Paul's College
WASHINGTON, D.C.



BUILDING ELEVATIONS

BUILDING - 5
SEPTEMBER 10, 2007

LESSARD GROUP INC.
9111 Leesburg Pike, Ste. 700
Falls Church, VA 22042
P: 703.260.2244
F: 703.260.9128
www.lessardgroup.com

VKA, INC.
2025 Century Blvd.
Greenwood, MD 21040
P: 301.918.4100
F: 301.918.2282
www.vka.com

STUDIO 39
8418 Greenleaf Dr. 1C
Arlington, VA 22203
P: 703.718.6000
F: 703.718.6000
www.studio39.com

ZONING COMMISSION
District of Columbia
CASE NO. 07-27
EXHIBIT NO. 5A3

A-EB5



LEFT SIDE ELEVATION



FRONT ELEVATION



RIGHT SIDE ELEVATION



REAR ELEVATION



Saint Paul's College
WASHINGTON, D.C.



BUILDING ELEVATIONS

BUILDING - 6

SEPTEMBER 10, 2007



LESSARD GROUP INC.
8021 Leesburg Pike, Ste. 500
Spring, VA 22151
P: 703.460.3344
F: 703.460.3338
www.lessardgroup.com



VIKA, INC.
20251 Century Blvd.
Columbia, MD 21046
P: 301.924.4500
F: 301.924.2262
www.vika.com



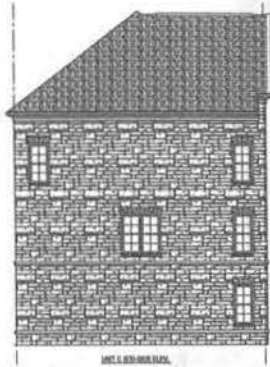
STUDIO 3B
6416 Greenway Dr., Ste. 100-A
Arlington, VA 22208
P: 703.718.8000
F: 703.718.8003
www.studio3b.com

EYA-146a.00



N.T.S. EYA146a-C-06

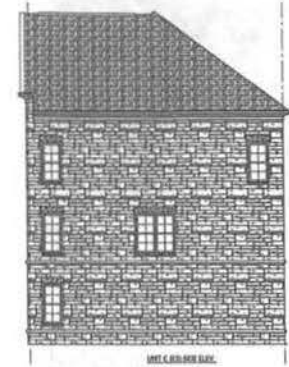
A-EB6



LEFT SIDE ELEVATION



FRONT ELEVATION



RIGHT SIDE ELEVATION



REAR ELEVATION



Saint Paul's College
WASHINGTON, D.C.

THE NEIGHBORHOODS OF
EYA

BUILDING ELEVATIONS

BUILDING - 7
SEPTEMBER 10, 2007

LESSARD GROUP INC.
8221 Leesburg Pike, Ste. 700
Manassas, VA 22108
P: 703.762.9344
F: 703.768.8128
www.lessardgroup.com

VKA, INC.
20241 Century Blvd.
Chantilly, VA 20151
P: 703.818.4120
F: 703.818.4122
www.vka.com

STUDIO 39
6418 Greenway Dr., Ste. 100-A
Alexandria, VA 22304
P: 703.718.8000
F: 703.718.6000
www.studio39.com

EYA-146a.00



A-EB7



LEFT SIDE ELEVATION



FRONT ELEVATION



RIGHT SIDE ELEVATION



REAR ELEVATION



KEY PLAN

Saint Paul's College
WASHINGTON, D.C.



BUILDING ELEVATIONS

BUILDING - 8
SEPTEMBER 10, 2007



LESSARD GROUP INC.
8521 Leesburg Pike, Ste. 200
Manassas, VA 22182
P: 703.760.8344
F: 703.760.8108
www.lessardgroup.com



VDKA, INC.
2025 Century Blvd.
Gainesville, MD 20894
P: 301.518.4100
F: 301.518.2062
www.vdka.com



STUDIO 39
8418 Greenbelle Dr. Ste. 100A
Alexandria, VA 22308
P: 703.718.6100
F: 703.718.6003
www.studio39.com

EYA.146a.00



N.T.S. EYA146a-0-00

A-EB8



INT-20101 INT-20102 INT-20103 INT-20104 INT-20105 INT-20106 INT-20107 INT-20108 INT-20109 INT-20110

FRONT ELEVATION



INT-20101

LEFT SIDE ELEVATION



INT-20110

RIGHT SIDE ELEVATION



INT-20101 INT-20102 INT-20103 INT-20104 INT-20105 INT-20106 INT-20107 INT-20108 INT-20109 INT-20110

REAR ELEVATION



KEY PLAN

Saint Paul's College
WASHINGTON, D.C.

THE NEIGHBORHOODS OF
EYA

BUILDING ELEVATIONS

BUILDING - 9

SEPTEMBER 10, 2007



LESSARD GROUP INC.
8211 Leesburg Pike, Ste. 700
Vienna, VA 22186
P: 703.760.8338
F: 703.760.8339
www.lessardgroup.com



VIKA INC.
20751 Century Blvd.
Germantown, MD 20874
P: 301.318.4320
F: 301.318.2262
www.vika.com



STUDIO 39
4418 Greenbelt Dr. Ste. 100-A
Hyattsville, VA 22186
P: 301.718.4800
F: 301.718.6000
www.studio39.com

EYA.146a.00



N.T.S.

EYA146a-0-09

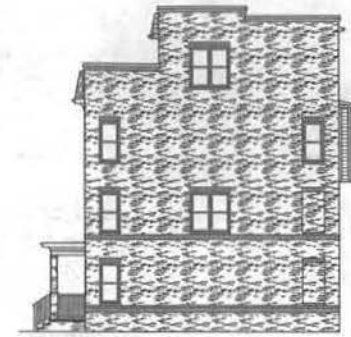
A-EB9



LEFT SIDE ELEVATION



FRONT ELEVATION



RIGHT SIDE ELEVATION



REAR ELEVATION



KEY PLAN

Saint Paul's College
WASHINGTON, D.C.



BUILDING ELEVATIONS

BUILDING - 10
SEPTEMBER 10, 2007



LESSARD GROUP INC.
8521 Lindbergh Plaza, Ste. 700
Vienna, VA 22184
T: 703.906.8194
F: 703.906.8198
www.lessardgroup.com



VIBA, INC.
20761 Century Blvd.
Dermottown, MD 20897
T: 301.516.4100
F: 301.516.2302
www.viba.com



STUDIO 39
8416 Granville Dr., Ste. 100-A
Alexandria, VA 22308
T: 703.718.6000
F: 703.718.6001
www.studio39.com

EYA.146&.00



N.T.S. EYA146&-0-013

A-EB10



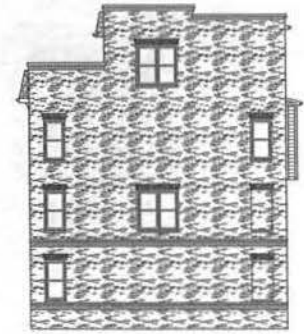
012.800000

LEFT SIDE ELEVATION



012.800000 012.800000 012.800000 012.800000 012.800000 012.800000 012.800000

FRONT ELEVATION



012.800000

RIGHT SIDE ELEVATION



012.800000 012.800000 012.800000 012.800000 012.800000 012.800000 012.800000

REAR ELEVATION



KEY PLAN

Saint Paul's College
WASHINGTON, D.C.



BUILDING ELEVATIONS

BUILDING - 11

SEPTEMBER 10, 2007



LESSARD GROUP INC.
9521 Leesburg Pike, Ste. 200
Vienna, VA 22182
P: 703.760.8184
F: 703.760.8188
www.lessardgroup.com



VIFA INC.
2021 Century Blvd.
Comptonville, MD 20849
P: 301.516.4100
F: 301.316.2262
www.vifa.com



STUDIO 39
4114 Greenbelt Dr., Ste. 100-A
Alexandria, VA 22304
P: 703.719.0900
F: 703.719.8043
www.studio39.com

EYA.146a.00



N.T.S. EYA/MAR-0-011

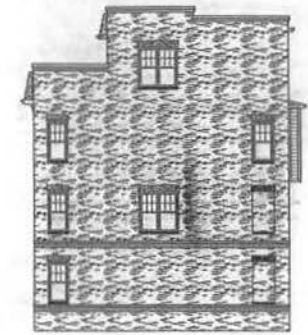
A-EB11



UNIT C-04/05/06/07
LEFT SIDE ELEVATION



UNIT C-001 UNIT C-002 UNIT C-003 UNIT C-004 UNIT C-005
FRONT ELEVATION



UNIT C-0300/04/05
RIGHT SIDE ELEVATION



UNIT C-006 UNIT C-007 UNIT C-008 UNIT C-009 UNIT C-010
REAR ELEVATION



KEY PLAN

Saint Paul's College
WASHINGTON, D.C.



BUILDING ELEVATIONS

BUILDING - 12
SEPTEMBER 10, 2007



LESSARD GROUP INC.
9521 Lomborg Pike, Ste. 200
Vienna, VA 22182
P: 703.760.5294
F: 703.760.5208
www.lessardgroup.com



VIKA, INC.
20211 Century Blvd
Centersville, MO 64534
P: 703.848.4330
F: 703.848.2262
www.vika.com



STUDIO 39
8416 Greenleaf Dr., Ste. 100-4
Arlington, VA 22203
P: 703.273.8500
F: 703.273.8503
www.studio39.com

EYA.146a.00



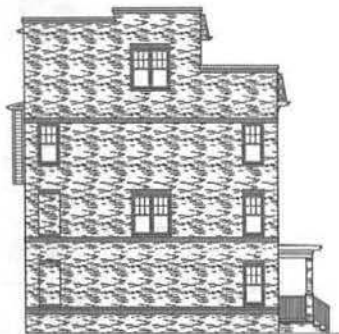
N.T.S.

EYA146a-0-B12

A-EB12



FRONT ELEVATION



LEFT SIDE ELEVATION



RIGHT SIDE ELEVATION



REAR ELEVATION



KEY PLAN

Saint Paul's College
WASHINGTON, D.C.



BUILDING ELEVATIONS

BUILDING - 13

SEPTEMBER 10, 2007



LESSARD GROUP INC.
3021 Lindbergh Plaza, Ste. 700
Yorkville, VA 22182
P: 703.260.8794
F: 703.260.8228
www.lessardgroup.com



VICA, INC.
2025 Century Blvd.
Greenwood, MD 21040
P: 301.616.4100
F: 301.616.4000
www.vica.com



STUDIO 39
4616 Greenway Dr., Ste. 100-A
Alexandria, VA 22304
P: 703.718.8300
F: 703.718.6000
www.studio39.com

EYA-146a.00



N.T.S. EYA146A-E-013

A-EB13



FRONT ELEVATION



LEFT SIDE ELEVATION



RIGHT SIDE ELEVATION



REAR ELEVATION



KEY PLAN

Saint Paul's College
WASHINGTON, D.C.



BUILDING ELEVATIONS

BUILDING - 14
SEPTEMBER 10, 2007



LESSARD GROUP INC.
4811 Leesburg Pike, Ste. 305
Vienna, VA 22182
P: 703.760.9194
F: 703.760.9198
www.lessardgroup.com



VINA, INC.
2021 Century Blvd
Dermottown, MD 20848
P: 301.918.4320
F: 301.918.2382
www.vina.com



STUDIO 39
4414 Greenbelt Dr. Ste. 100-A
Annapolis, VA 22302
P: 703.715.8080
F: 703.715.8867
www.studio39.com

EYA.146a.00



N.T.S. EYA146A-0-014

A-EB14



LEFT SIDE ELEVATION



FRONT ELEVATION



RIGHT SIDE ELEVATION



FRONT RIGHT ELEVATION



RIGHT SIDE ELEVATION



REAR ELEVATION



KEY PLAN

Saint Paul's College
WASHINGTON, D.C.

THE NEIGHBORHOODS OF
EYA

BUILDING ELEVATIONS

BUILDING - 15
SEPTEMBER 10, 2007



LESSARD GROUP INC.
8211 Leesburg Pike, Ste. 700
Vienna, VA 22184
P: 703.898.8394
F: 703.790.8328



VIKA, INC.
20251 Century Blvd
Silver Spring, MD 20904
P: 301.516.4200
F: 301.508.2262



STUDIO 39
6414 Greenbelt Dr., Ste. 100 A
Silver Spring, MD 20910
P: 301.715.8500
F: 301.715.8063

EYA.146a.00



N.T.S. EYA-146a-D-013

A-EB15



INT. ELEV.

LEFT SIDE ELEVATION



INT. ELEV.

INT. ELEV.

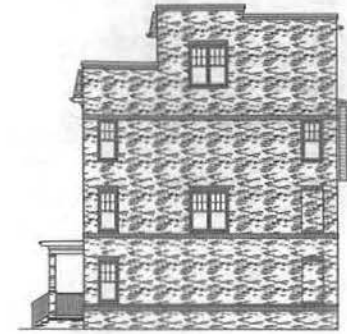
INT. ELEV.

INT. ELEV.

INT. ELEV.

INT. ELEV.

FRONT ELEVATION



INT. ELEV.

RIGHT SIDE ELEVATION



INT. ELEV.

INT. ELEV.

INT. ELEV.

INT. ELEV.

INT. ELEV.

INT. ELEV.

REAR ELEVATION



KEY PLAN

Saint Paul's College
WASHINGTON, D.C.



BUILDING ELEVATIONS

BUILDING - 16
SEPTEMBER 10, 2007



LESSARD GROUP INC.
8021 Lindbergh Plaza, Ste. 700
Vienna, VA 22182
P: 703.760.8344
F: 703.760.8328
www.lessardgroup.com



VMA, INC.
20251 Gateway Blvd.
Cermansville, MD 20854
P: 301.814.4100
F: 301.814.1800
www.vma.com



STUDIO 39
4414 Greenview Dr. Ste. 100-A
Alexandria, VA 22304
P: 703.718.0080
F: 703.718.0000
www.studio39.com

EYA-146a.00



N.T.S. EYA146A-E-016

A-EB16



LEFT FRONT ELEVATION



FRONT COURTYARD ELEVATION



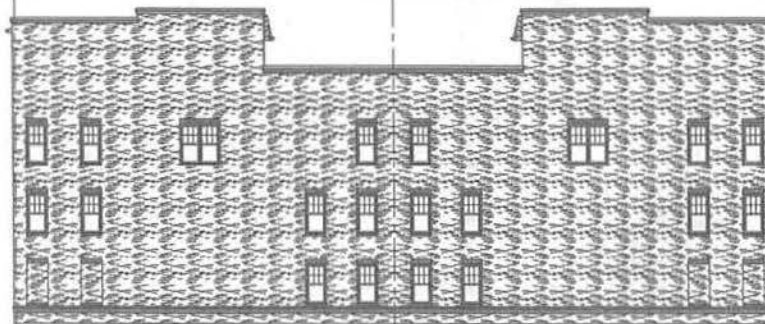
RIGHT FRONT ELEVATION



LEFT SIDE ELEVATION



RIGHT SIDE ELEVATION



REAR ELEVATION



LEFT REAR SIDE ELEVATION



RIGHT REAR SIDE ELEVATION



KEY PLAN

Saint Paul's College
WASHINGTON, D.C.



BUILDING ELEVATIONS

BUILDING - 17

SEPTEMBER 10, 2007



LESSARD GROUP INC.
6511 Leesburg Pike, Ste. 700
Vienna, VA 22182
P: 703.760.8348
F: 703.760.8348



V&A, INC.
20711 Century Blvd.
Germantown, MD 20876
P: 301.718.6000
F: 301.718.2282



STUDIO 39
6110 Greenway Dr., Ste. 100A
Alexandria, VA 22304
P: 703.718.6000
F: 703.718.6000

EYA.146a.00



N.T.S.

EYA146a-0-027

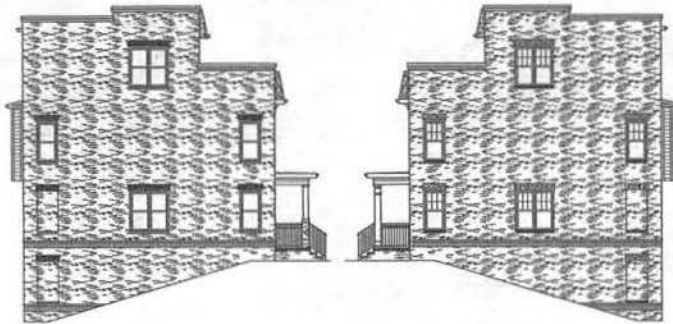
A-EB17



LEFT FRONT ELEVATION

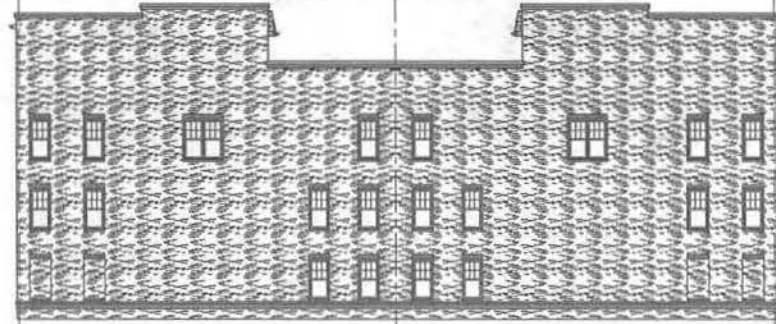
FRONT COURTYARD ELEVATION

RIGHT FRONT ELEVATION



LEFT SIDE ELEVATION

RIGHT SIDE ELEVATION



REAR ELEVATION



LEFT SIDE REAR ELEVATION



RIGHT SIDE REAR ELEVATION



KEY PLAN

Saint Paul's College
WASHINGTON, D.C.

THE NEIGHBORHOODS OF
EYA

BUILDING ELEVATIONS

BUILDING - 18

SEPTEMBER 10, 2007



LESSARD GROUP INC.
8531 Leesburg Pike, Ste. 700
Arling, VA 22142
P: 703.760.5244
F: 703.760.6108
www.lessardgroup.com



VIBA, INC.
20251 Century Blvd.
Germantown, MD 20874
P: 301.916.4200
F: 301.916.2262
www.viba.com



STUDIO 39
6456 Greenleaf Dr., Ste. 100-A
Arlington, VA 22208
P: 703.718.8800
F: 703.718.8807
www.studio39.com

EYA.146a.00



N.T.S. EYA146A-018

A-EB18



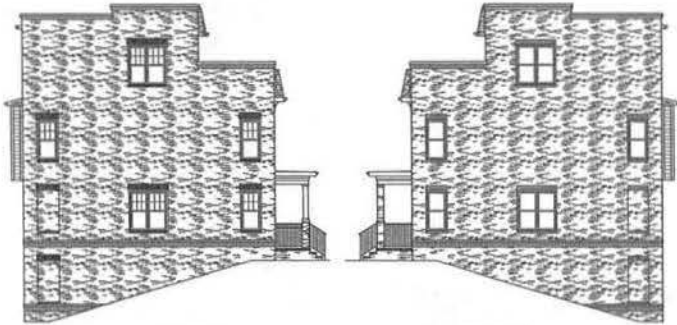
LEFT FRONT ELEVATION



FRONT COURTYARD ELEVATION

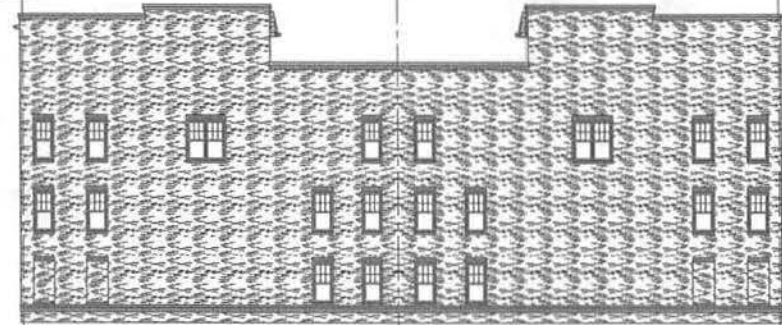


RIGHT FRONT ELEVATION



LEFT SIDE ELEVATION

RIGHT SIDE ELEVATION



REAR ELEVATION



LEFT REAR SIDE ELEVATION



RIGHT REAR SIDE ELEVATION



KEY PLAN

Saint Paul's College
WASHINGTON, D.C.



BUILDING ELEVATIONS

BUILDING - 19

SEPTEMBER 10, 2007



LESSARD GROUP INC.
8521 Lomburg Pike, Ste. 700
Vienna, VA 22182
P: 703.760.8344
F: 703.760.8328



VIKA, INC.
20851 Century Blvd.
Chantilly, VA 20151
P: 561.818.4300
F: 561.818.2382



STUDIO 39
8418 Greenleaf Dr., Ste. 100-A
Arlington, VA 22203
P: 703.719.6699
F: 703.719.6603

EYA.146a.00



N.T.S.

EYA146a-0-013

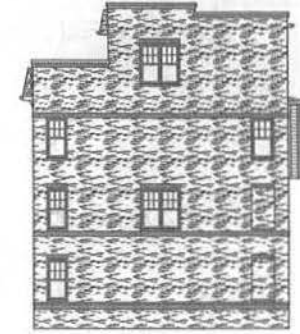
A-EB19



LEFT SIDE ELEVATION



FRONT ELEVATION



RIGHT SIDE ELEVATION



REAR ELEVATION



KEY PLAN

Saint Paul's College
WASHINGTON, D.C.



BUILDING ELEVATIONS

BUILDING - 20
SEPTEMBER 10, 2007

LESSARD GROUP INC.
8333 Leesylvania Road, Suite 700
Vienna, VA 22182
P: 703.760.8194
F: 703.760.8198
www.lessardgroup.com

VIFA, INC.
20210 Century Blvd
Springfield, VA 22150
P: 541.918.4400
F: 541.918.2262
www.vifa.com

STUDIO 39
3412 Greenway Dr., Ste. 100-A
Alexandria, VA 22304
P: 703.733.6500
F: 703.733.6500
www.studio39.com

EYA-146a.00

N.T.S. EYA146a-0-020

A-EB20



UNIT 2000000000

LEFT SIDE ELEVATION



UNIT 2000000000 UNIT 2000000000 UNIT 2000000000 UNIT 2000000000 UNIT 2000000000 UNIT 2000000000 UNIT 2000000000 UNIT 2000000000 UNIT 2000000000 UNIT 2000000000

FRONT ELEVATION



UNIT 2000000000

RIGHT SIDE ELEVATION



UNIT 2000000000 UNIT 2000000000 UNIT 2000000000 UNIT 2000000000 UNIT 2000000000 UNIT 2000000000 UNIT 2000000000 UNIT 2000000000 UNIT 2000000000 UNIT 2000000000

REAR ELEVATION



Saint Paul's College
WASHINGTON, D.C.

THE NEIGHBORHOODS OF
EYA

BUILDING ELEVATIONS

BUILDING - 21

SEPTEMBER 10, 2007



LESSARD GROUP INC.
8121 Leesburg Pike, Ste. 700
Vienna, VA 22182
P: 703.860.8344
F: 703.790.8320
www.lessard.com



VDKA, INC.
20251 Century Blvd.
Broomfield, CO 80020
P: 303.435.4330
F: 303.435.2382



STUDIO 39
8415 Greenbelt Dr., Ste. 100-A
Alexandria, VA 22304
P: 703.719.6881
F: 703.719.6883

EYA.146a.00



N.T.S. EYA146A-0-022

A-EB21



INT-C-001-0001

LEFT SIDE ELEVATION



INT-C-001-0002 INT-C-001-0003 INT-C-001-0004 INT-C-001-0005 INT-C-001-0006 INT-C-001-0007 INT-C-001-0008 INT-C-001-0009

FRONT ELEVATION



INT-C-001-0001

RIGHT SIDE ELEVATION



INT-C-001-0010 INT-C-001-0011 INT-C-001-0012 INT-C-001-0013 INT-C-001-0014 INT-C-001-0015 INT-C-001-0016 INT-C-001-0017

REAR ELEVATION



KEY PLAN

Saint Paul's College
WASHINGTON, D.C.



BUILDING ELEVATIONS

BUILDING - 22
SEPTEMBER 10, 2007



LESSARD GROUP INC.
8221 Oakridge Pike, Ste. 700
Vienna, VA 22188
P: 703.760.8194
F: 703.760.8138
www.lessardgroup.com



VVA, INC.
20251 Century Blvd.
Dorset Heights, VA 22026
P: 804.548.4100
F: 804.548.2262
www.vva.com



STUDIO 39
1418 Grasslands Dr., Ste. 100-A
Alexandria, VA 22304
P: 703.718.8800
F: 703.718.8800
www.studio39.com

EYA-146a.00



N.T.S. EYA146a-0-012

A-EB22



RIGHT SIDE ELEVATION



FRONT ELEVATION



LEFT SIDE ELEVATION



FRONT ELEVATION



KEY PLAN

Saint Paul's College
WASHINGTON, D.C.



BUILDING ELEVATIONS

BUILDING - 23
SEPTEMBER 10, 2007



LESSARD GROUP INC.
8521 Leesburg Pike, Ste. 700
Vienna, VA 22186
P: 703.769.8344
F: 703.769.8328



VIKA, INC.
20211 Century Blvd.
Springfield, MD 20781
P: 301.914.4300
F: 301.914.2163



STUDIO 39
4416 Granddell Dr. Ste. 100-A
Arlington, VA 22207
P: 703.516.8500
F: 703.516.8503

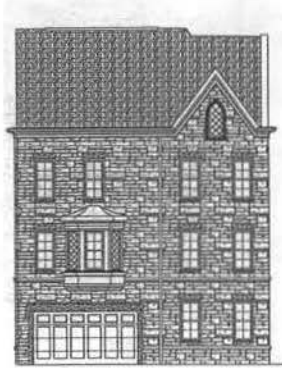
EYA.146a.00



N.T.S.

EYA\2006-0-023

A-EB23



LEFT SIDE ELEVATION



FRONT ELEVATION



RIGHT SIDE ELEVATION



Saint Paul's College
WASHINGTON, D.C.



BUILDING ELEVATIONS

BUILDING - 24
SEPTEMBER 10, 2007

LESSARD GROUP INC.
4521 Leesburg Pike, Ste. 700
Vienna, VA 22184
P: 703.760.8249
F: 703.760.8108
www.lessardgroup.com

VIFA, INC.
2021 Century Blvd.
Germantown, MD 20874
P: 301.910.4220
F: 301.910.2284
www.vifa.com

STUDIO 39
4148 Greenleaf Cr. Ste. 100-A
Alexandria, VA 22304
P: 703.713.8500
F: 703.714.8800
www.studio39.com

EYA.146a.00



A-EB24



WELSHBERRY

LEFT SIDE ELEVATION



WELSHBERRY WELSHBERRY WELSHBERRY

FRONT ELEVATION



WELSHBERRY

RIGHT SIDE ELEVATION



WELSHBERRY WELSHBERRY WELSHBERRY

REAR ELEVATION



KEY PLAN

Saint Paul's College
WASHINGTON, D.C.

THE NEIGHBORHOODS OF
EYA

BUILDING ELEVATIONS

BUILDING - 25

SEPTEMBER 10, 2007



LESSARD GROUP INC.
8021 Lomborg Pike, Ste. 300
Manassas, VA 22182
P: 703.795.0294
F: 703.795.8228



VKA, INC.
20225 Century Blvd.
Germantown, MD 20884
P: 301.265.4200
F: 301.265.2282



STUDIO 39
6416 Greenleaf Dr., Ste. 100-A
Alexandria, VA 22304
P: 703.778.6000
F: 703.778.6000

EYA.146a.00



A-EB25



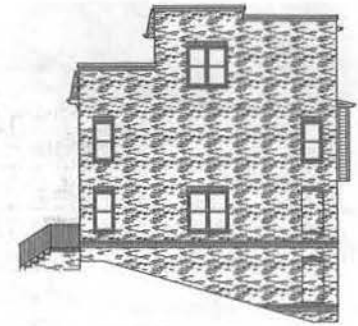
UNIT 3.000001

LEFT SIDE ELEVATION



UNIT 3.000001 UNIT 3.000002 UNIT 3.000003 UNIT 3.000004 UNIT 3.000005 UNIT 3.000006 UNIT 3.000007 UNIT 3.000008 UNIT 3.000009

FRONT ELEVATION



UNIT 3.000009

RIGHT SIDE ELEVATION



UNIT 3.000001 UNIT 3.000002 UNIT 3.000003 UNIT 3.000004 UNIT 3.000005 UNIT 3.000006 UNIT 3.000007 UNIT 3.000008

REAR ELEVATION



KEY PLAN

Saint Paul's College
WASHINGTON, D.C.



BUILDING ELEVATIONS

BUILDING - 26
SEPTEMBER 10, 2007



LESSARD GROUP INC.
4821 Lanesburg Pike, Ste. 207
Warrenton, VA 22082
P: 703.760.8294
F: 703.760.8292
www.lessardgroup.com



VIKA, INC.
20281 Century Blvd.
Centersville, MO 64530
P: 301.844.4100
F: 301.844.4202
www.vikainc.com

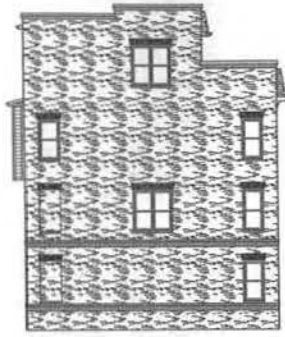


STUDIO 39
4445 Greenbelt Dr. Ste. 100-A
Arlington, VA 22204
P: 703.715.8000
F: 703.715.8003
www.studio39.com

EYA.146a.00



A-EB26



001.CAD.DRAWING

LEFT SIDE ELEVATION



001.CAD.DRAWING 001.CAD.DRAWING 001.CAD.DRAWING

FRONT ELEVATION



001.CAD.DRAWING

RIGHT SIDE ELEVATION



001.CAD.DRAWING 001.CAD.DRAWING 001.CAD.DRAWING

REAR ELEVATION



KEY PLAN

Saint Paul's College
WASHINGTON, D.C.



BUILDING ELEVATIONS

BUILDING - 27

SEPTEMBER 10, 2007



LESSARD GROUP INC.
8021 Leesylvania Park, Ste. 700
Vienna, VA 22182
P: 703.261.8344
F: 703.261.8328



VICA, INC.
2021 Century Blvd.
Cherry Hill, MD 20774
P: 301.218.4200
F: 301.218.2382



STUDIO 35
4118 Greenleaf Dr., Ste. 100-A
Arlington, VA 22210
P: 551.718.8000
F: 551.718.8000

EYA.146a.00



N.T.S. EYA146a-E-027

A-EB27



LEFT SIDE ELEVATION



FRONT ELEVATION



RIGHT SIDE ELEVATION



REAR ELEVATION



KEY PLAN

Saint Paul's College
WASHINGTON, D.C.

THE NEIGHBORHOODS OF
EYA

BUILDING ELEVATIONS

BUILDING - 28

SEPTEMBER 10, 2007



LESSARD GROUP INC.
8223 Leesburg Pike, Ste. 100
Manassas, VA 22110
P: 703.760.9194
F: 703.760.9118
www.lessardgroup.com



VHA, INC.
2025 Century Blvd.
Crownsville, MD 21031
P: 410.516.4228
F: 410.516.2362
www.vha.com



STUDIO 28
4148 Greenbelt Dr., Ste. 100-A
Bethesda, MD 20814
P: 301.714.6028
F: 301.714.6033
www.studio28.com

EYA.146a.00

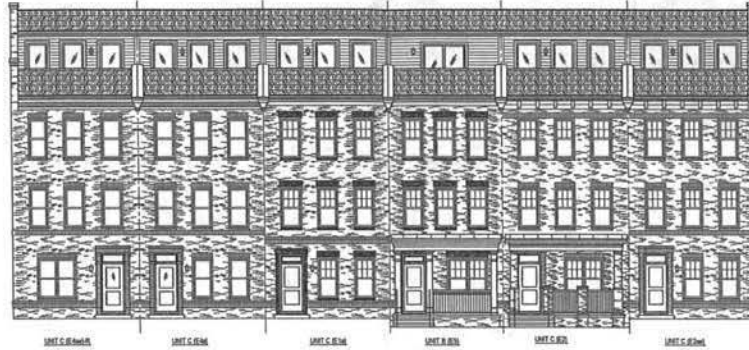


N.T.S. EYA/MAA-D-022

A-EB28



LEFT SIDE ELEVATION



FRONT ELEVATION



RIGHT SIDE ELEVATION



REAR ELEVATION



Saint Paul's College
WASHINGTON, D.C.



BUILDING ELEVATIONS

BUILDING - 29
SEPTEMBER 10, 2007



LESSARD GROUP INC.
8021 Leesburg Pike, Ste. 700
Vienna, VA 22182
P: 703.766.6344
F: 703.766.6338
www.lessardgroup.com



VIKA, INC.
2025 Century Blvd.
Gainesville, FL 32604
P: 352.315.4200
F: 352.315.2342
www.vika.com



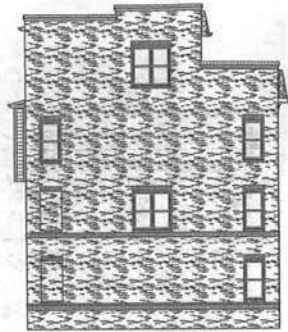
STUDIO 39
8418 Greenleaf Dr., Ste. 100A
Alexandria, VA 22308
P: 703.719.8900
F: 703.719.8903

EYA.146a.00



N.T.S. EYA146a-0-829

A-EB29



LEFT SIDE ELEVATION



FRONT ELEVATION



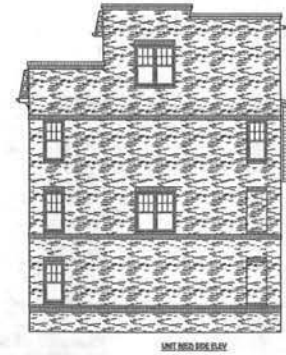
FRONT RIGHT SIDE ELEVATION



REAR ELEVATION



REAR ELEVATION



RIGHT SIDE ELEVATION



KEY PLAN

Saint Paul's College
WASHINGTON, D.C.



BUILDING ELEVATIONS

BUILDING - 30

SEPTEMBER 10, 2007



LESSARD GROUP INC.
8521 Leesburg Pike, Ste. 300
Vienna, VA 22182
P: 703.760.5294
F: 703.760.9328
www.lessardgroup.com



VIKI INC.
20251 Century Blvd.
Cortneytown, MD 20874
P: 301.516.4000
F: 301.916.2282
www.viki.com



STUDIO 39
6416 Greenleaf Dr., Ste. 100-A
Alexandria, VA 22304
P: 703.719.6000
F: 703.719.6003
www.studio39.com

EYA.146a.00



N.T.S. EYA146AA-0-030

A-EB30



LEFT SIDE ELEVATION



FRONT ELEVATION



RIGHT SIDE ELEVATION



REAR ELEVATION



KEY PLAN

Saint Paul's College
WASHINGTON, D.C.



BUILDING ELEVATIONS

BUILDING - 31
SEPTEMBER 10, 2007



LESSARD GROUP INC.
9521 Leesburg Pike, Ste. 505
Manassas, VA 22182
P: 703.762.8394
F: 703.762.8328



VIKA, INC.
20511 Embassy Blvd.
Gaithersburg, MD 20878
P: 301.938.4300
F: 301.938.3302



STUDIO 39
8418 Greenbelt Dr., Ste. 100-A
Baltimore, MD 21215
P: 703.712.6600
F: 703.712.6503

EYA-146a.00



N.T.S. EYA146a-0-031

A-EB31



UNIT 3 SIDE ELEVATION

LEFT SIDE ELEVATION



UNIT 2000A

UNIT 2000B

UNIT 2000C

UNIT 2000D

FRONT ELEVATION



UNIT 3 SIDE ELEVATION

RIGHT SIDE ELEVATION



UNIT 2000A

UNIT 2000B

UNIT 2000C

UNIT 2000D

REAR ELEVATION



KEY PLAN

Saint Paul's College
WASHINGTON, D.C.



BUILDING ELEVATIONS

BUILDING - 32
SEPTEMBER 10, 2007



LESSARD GROUP INC.
8511 Limestone Pike, Ste. 702
Vienna, VA 22182
P: 703.762.6144
F: 703.762.6328
www.lessardgroup.com



VIKA INC.
3025 Century Blvd.
Smythstone, MD 20878
P: 301.515.4026
F: 301.515.2262
www.vika.com



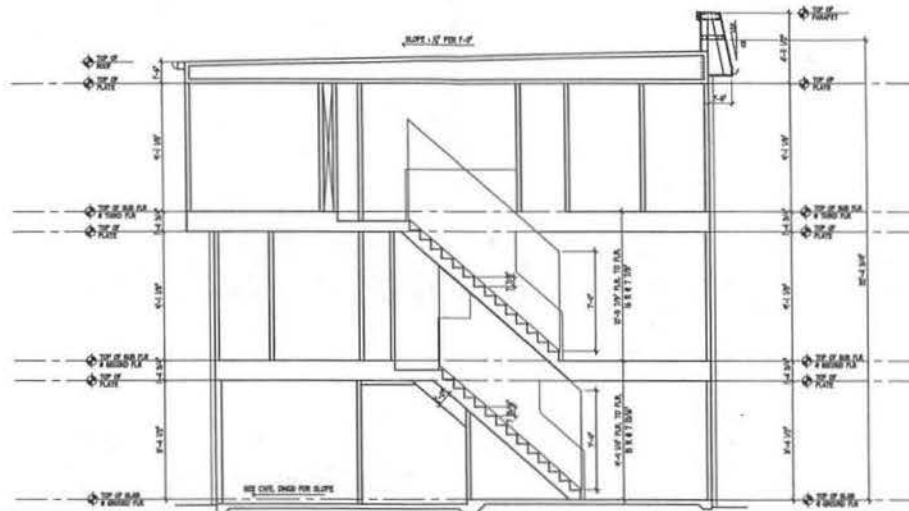
STUDIO 39
4418 Greenbelt Dr. Ste. 100A
Alexandria, VA 22304
P: 703.713.0000
F: 703.713.0003
www.studio39.com

EYA.146a.00



N.T.S. EYA146a-0-003

A-EB32



BUILDING SECTION UNIT A -Standard

Saint Paul's College
WASHINGTON, D.C.

THE NEIGHBORHOODS OF
EYA

BUILDING SECTIONS

UNIT - A

SEPTEMBER 10, 2007



LENSARD GROUP INC.
8023 Lankford Park, No. 200
Vienna, VA 22182
P: 703.740.0244
F: 703.740.9348



VPKA, INC.
20251 Conley Blvd.
Seminole, FL 32074
P: 352.346.4100
F: 352.346.2282

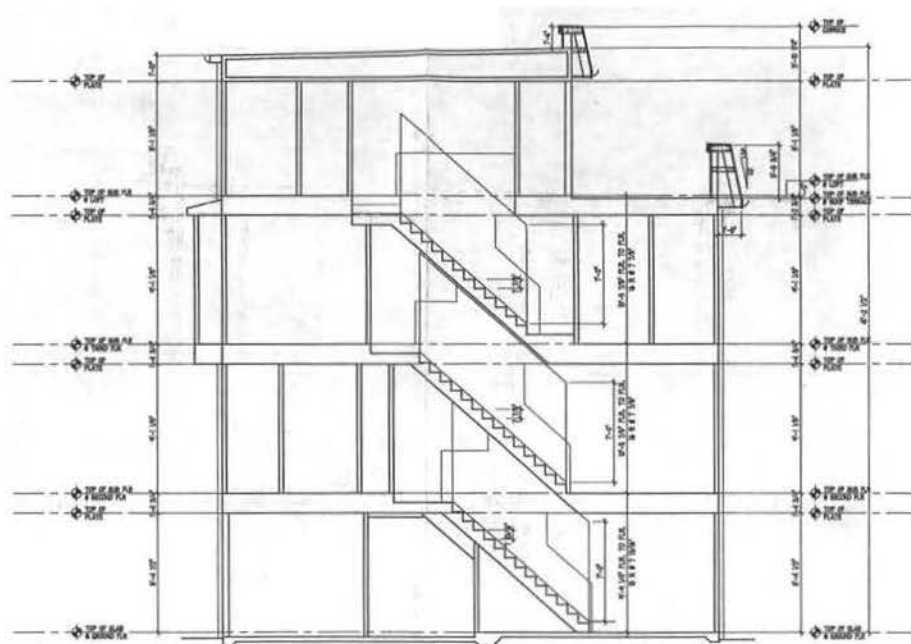


STUDIO 39
414 E. Greenleaf St., Ste. 100-A
Alexandria, VA 22304
P: 703.725.8800
F: 703.725.8803

EYA.146a.00



A-EB33



BUILDING SECTION UNIT A - Opt. Loft Terrace

Saint Paul's College
WASHINGTON, D.C.



BUILDING SECTIONS

UNIT - A

SEPTEMBER 10, 2007



LESSARD GROUP INC.
8221 Leesburg Pike, Ste. 700
Vienna, VA 22180
P: 703.760.9394
F: 703.760.9328
www.lessardgroup.com



VIKKA, INC.
10781 Colony Blvd.
Greenwood, MD 20878
P: 301.844.4100
F: 301.844.2483
www.vikka.com

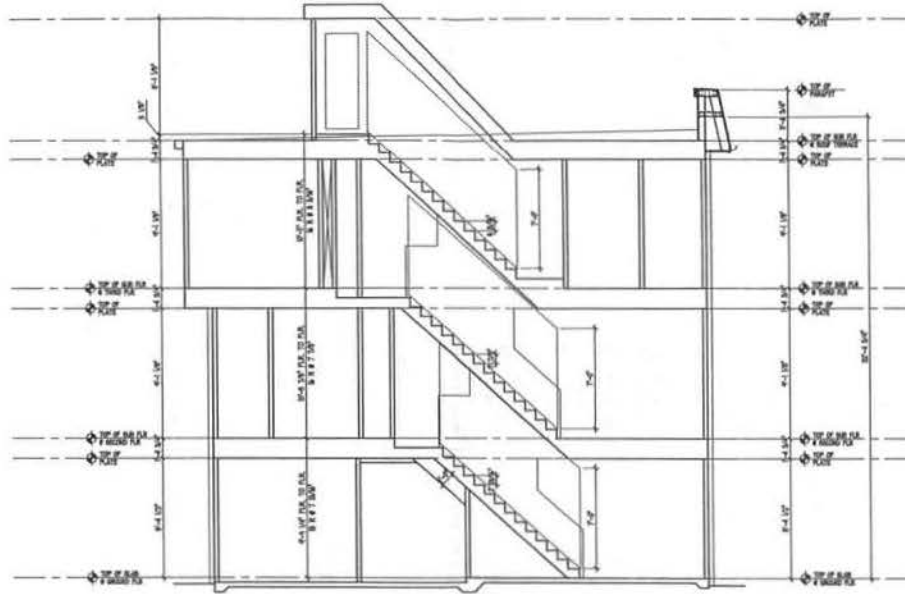


STUDIO 39
6416 Grandville Dr., Ste. 100-A
Alexandria, VA 22312
P: 703.712.6000
F: 703.712.0503
www.studio39.com

EYA.145a.00



A-EB34



BUILDING SECTION UNIT A - Opt. Roof Access

Saint Paul's College
WASHINGTON, D.C.



BUILDING SECTIONS

UNIT - A

SEPTEMBER 10, 2007



LESSARD GROUP INC.
4121 Langburg Pike, Ste. 700
Vienna, VA 22182
P: 703.900.8344
F: 703.900.8328



VDKA, INC.
20231 Century Blvd.
Germitown, MD 20874
P: 301.916.4100
F: 301.916.2262

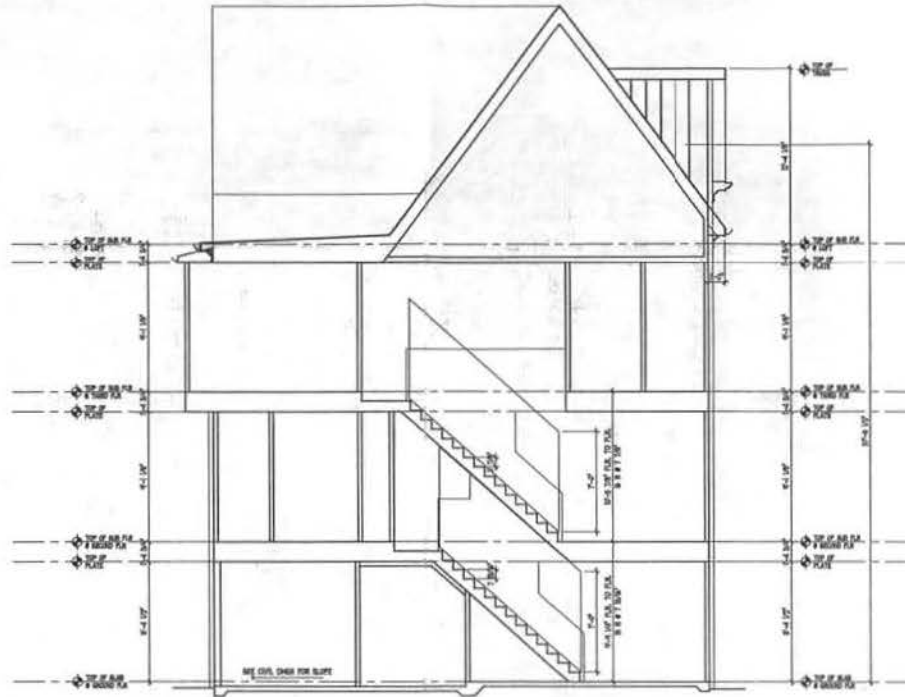


STUDIO 39
8418 Greenleaf Dr. Ste. 100-4
Alexandria, VA 22304
P: 703.719.6500
F: 703.719.6501

EYA.146a.00



A-EB35



BUILDING SECTION UNIT A - Alt. Stone Elevation (Standard)

Saint Paul's College
WASHINGTON, D.C.



BUILDING SECTIONS

UNIT - A

SEPTEMBER 10, 2007



LESSARD GROUP INC.
8311 Leesburg Pike, Ste. 700
Vienna, VA 22182
P: 703.460.8188
F: 703.460.8188
www.lessardgroup.com



VIKI INC.
20251 Century Blvd.
Greenwood, MD 21040
P: 301.318.4200
F: 301.318.4200
www.viki.com



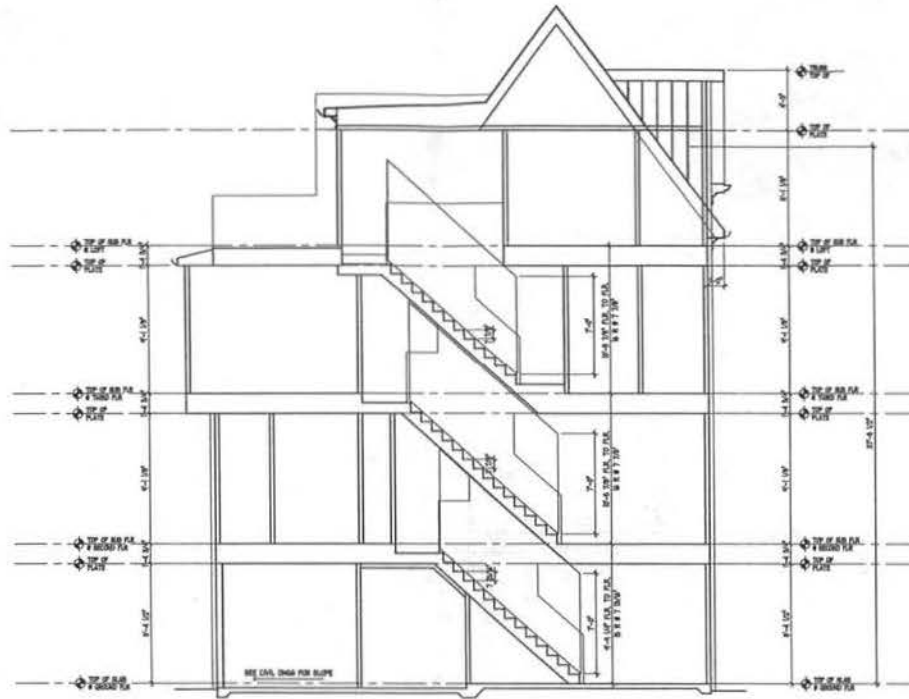
STUDIO 39
6418 Greenbelt Dr. Ste. 100 A
Alexandria, VA 22304
P: 703.710.4200
F: 703.710.4200
www.studio39.com

EYA.146a.00



N.T.S. EYA146a-0-036

A-EB36



BUILDING SECTION UNIT A - Alt. Stone Elevation (Optional)

Saint Paul's College
WASHINGTON, D.C.

THE NEIGHBORHOODS OF
EYA

BUILDING SECTIONS

UNIT A

SEPTEMBER 10, 2007



LESSARD GROUP INC.
8521 Leesburg Pike, Ste. 700
Falls Church, VA 22042
P: 703.916.3344
F: 703.916.3328
www.lessardgroup.com



VHA, INC.
20311 Century Blvd.
Cockeysville, MD 21034
P: 301.916.4100
F: 301.916.2382



STUDIO 39
6418 Driveway Dr. Ste. 100A
Arlington, VA 22204
P: 703.778.8300
F: 703.778.8301
www.studio39.com

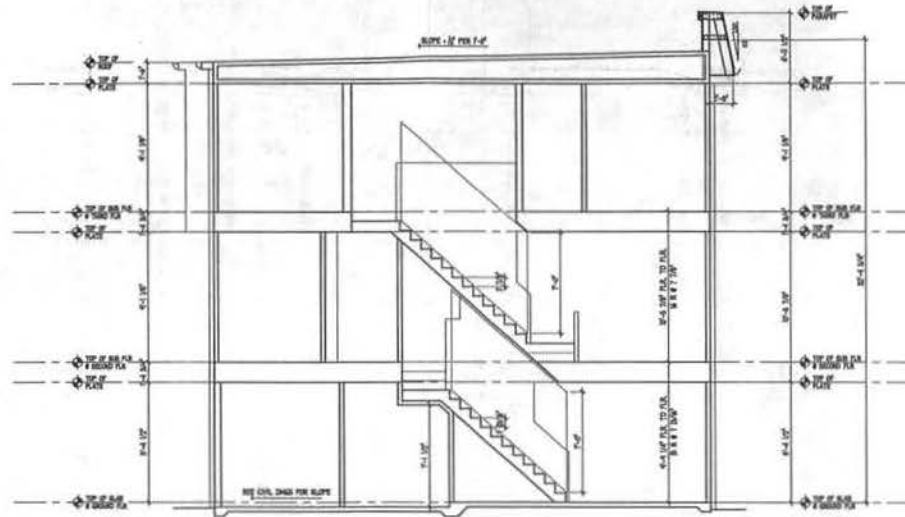
EYA.146a.00



N.T.S. EYA146a-S-237

A-EB37

NOTHING HEREIN IS TO BE CONSIDERED A CONTRACT. THE CONTRACT SHALL BE THE CONTRACT DOCUMENTS AND SPECIFICATIONS. THESE DRAWINGS ARE THE PROPERTY OF THE ARCHITECT AND SHALL BE KEPT IN CONFIDENCE. NO PART OF THESE DRAWINGS, IN ANY FORM OR BY ANY MEANS, ELECTRONIC OR MECHANICAL, INCLUDING PHOTOCOPYING, RECORDING, OR BY ANY INFORMATION STORAGE AND RETRIEVAL SYSTEM, MAY BE REPRODUCED OR TRANSMITTED IN ANY FORM OR BY ANY MEANS WITHOUT THE WRITTEN PERMISSION OF THE ARCHITECT.



BUILDING SECTION UNIT B -Standard

Saint Paul's College
WASHINGTON, D.C.



BUILDING SECTIONS

UNIT - B

SEPTEMBER 10, 2007



LESSARD GROUP INC.
8521 Leesburg Pike, Ste. 700
Vienna, VA 22182
P: 703.762.9344
F: 703.762.9339
www.lessardgroup.com



VIKA INC.
2025 Century Blvd.
Greenbelt, MD 20741
P: 301.215.4200
F: 301.215.4242
www.vika.com



STUDIO 39
8118 Greenbelt Dr. Ste. 100-4
Silverdale, VA 22150
P: 703.775.8200
F: 703.775.6033
www.studio39.com

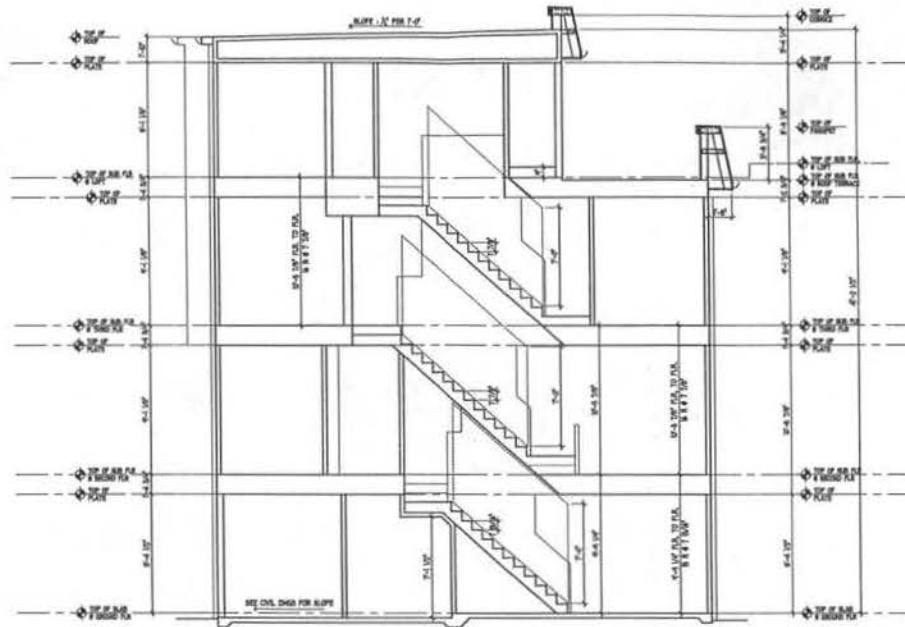
EYA.146a.00



N.T.S.

EYA146A-E-038

A-EB38



BUILDING SECTION UNIT B - Opt. Loft Terrace

Saint Paul's College
WASHINGTON, D.C.



BUILDING SECTIONS

UNIT - B

SEPTEMBER 10, 2007



LESSARD GROUP INC.
8221 Leesburg Pike, Ste. 700
Vienna, VA 22183
P: 703.908.9344
F: 703.908.8328



VIFA, INC.
20251 Century Blvd.
Surrey, VA 22189
P: 703.848.4200
F: 703.848.2382



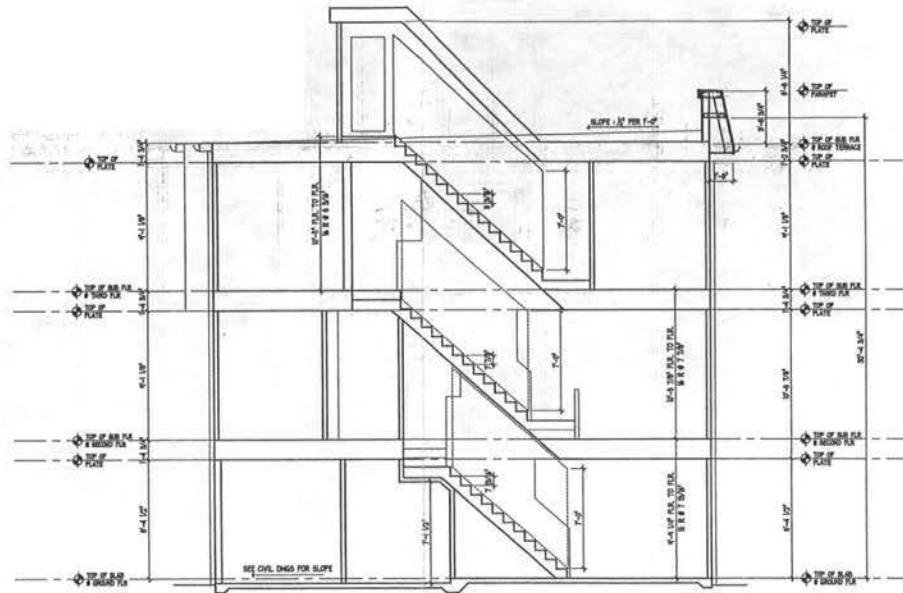
STUDIO 39
8124 Dominion Dr., Ste. 100-A
Arlington, VA 22209
P: 703.778.8000
F: 703.778.8553

EYA.146a.00



N.T.S. EYA146A-D-039

A-EB39



BUILDING SECTION UNIT B - Opt. Roof Access

Saint Paul's College
WASHINGTON, D.C.



BUILDING SECTIONS
UNIT - B

SEPTEMBER 10, 2007



LESSARD GROUP INC.
8521 Leesburg Pike, Ste. 700
Vienna, VA 22181
P: 703.760.8344
F: 703.760.8108
www.lessardgroup.com



VIKA, INC.
20251 Century Blvd.
Springtown, MD 20784
P: 301.916.4100
F: 301.916.2462
www.vika.com



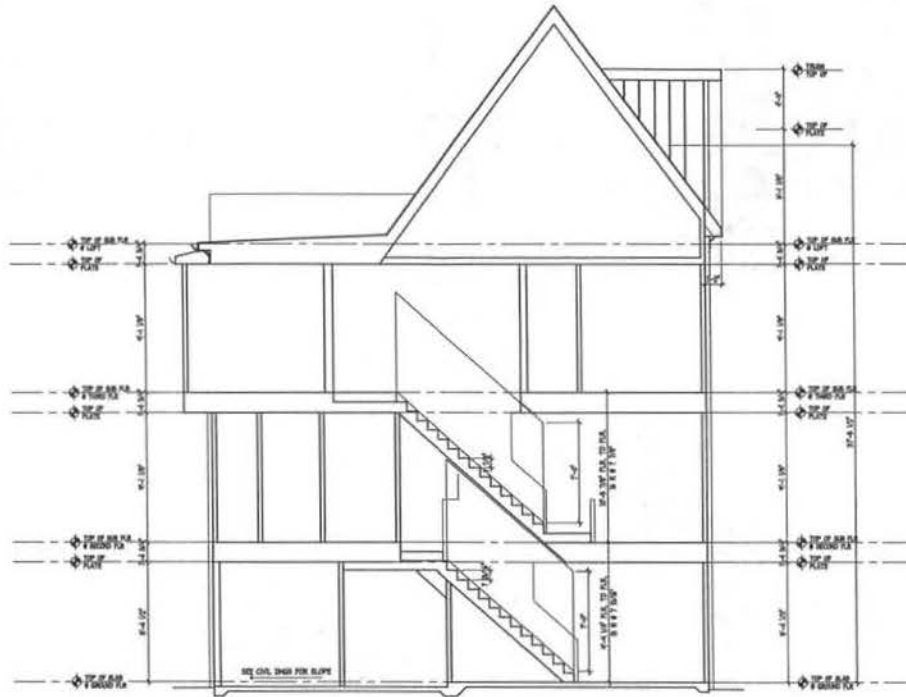
STUDIO 39
6455 Greenleaf Dr., Ste. 100-A
Alexandria, VA 22304
P: 703.718.8800
F: 703.718.8803
www.studio39.com

EYA.145a.00



N.T.S. EYA.145a.00-040

A-EB40



BUILDING SECTION UNIT B - Alt. Stone Elevation (Standard)

Saint Paul's College
WASHINGTON, D.C.

THE NEIGHBORHOODS OF
EYA

BUILDING SECTIONS

UNIT - B

SEPTEMBER 10, 2007



LESSARD GROUP INC.
8022 Leesylvania Pkwy. Ste. 700
Vienna, VA 22184
P: 703.760.5344
F: 703.760.5320



VINA, INC.
22201 Century Blvd.
Greenwood, MD 20870
P: 301.318.4388
F: 301.318.1302

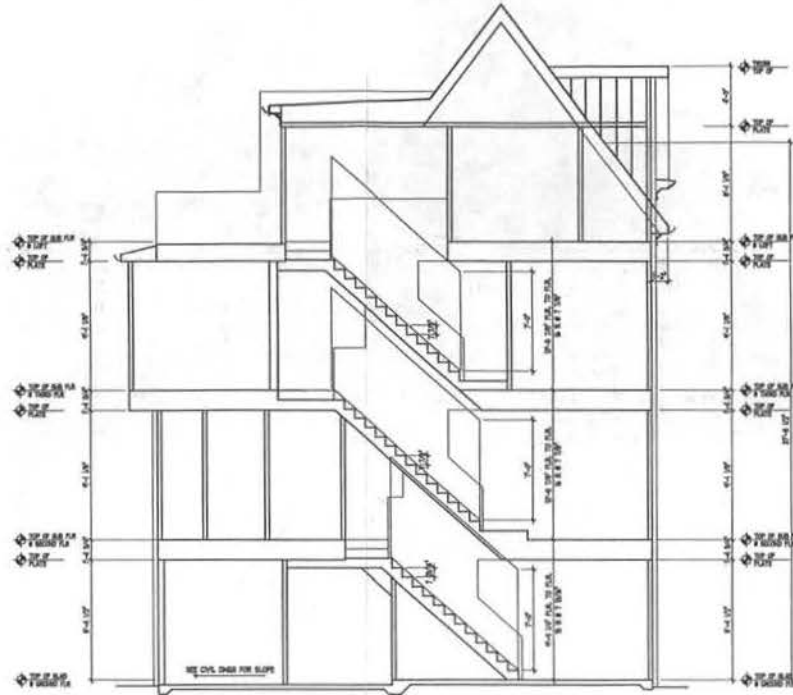


STUDIO 39
6418 Greenwald Dr. Ste. 100-A
Silverdale, WA 98134
P: 202.778.0320
F: 202.778.0320

EYA.145a.00

N.T.S. EYA145a-011

A-EB41



BUILDING SECTION UNIT B - All Stone Elevation (Optional)

Saint Paul's College
WASHINGTON, D.C.



BUILDING SECTIONS
UNIT - B

SEPTEMBER 10, 2007



LESSARD GROUP INC.
8521 Leesburg Pike, Ste. 700
Vienna, VA 22182
P: 703.300.0344
F: 703.300.9339
www.lessardgroup.com



VIVA, INC.
20751 Century Blvd.
Dermott, VA 22547
P: 703.838.1300
F: 703.838.1352
www.viva.com

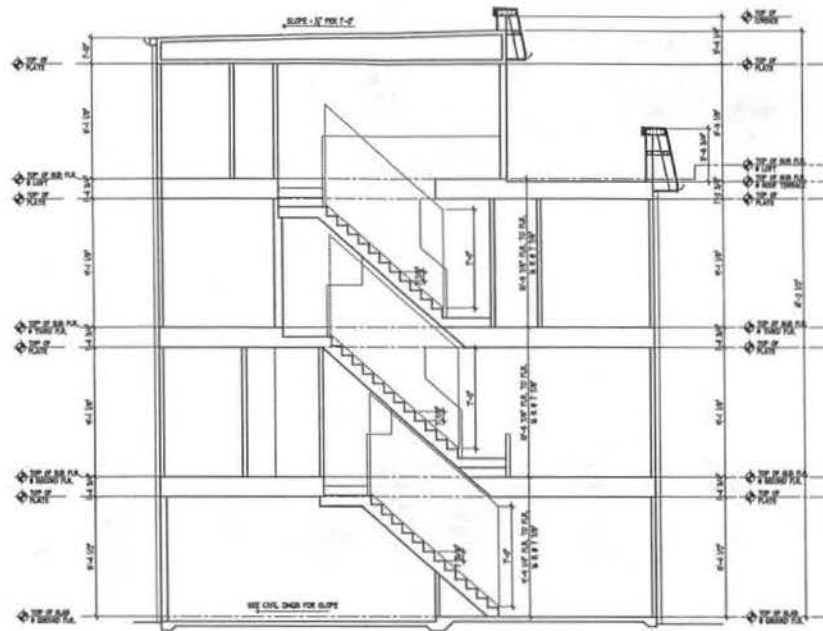


STUDIO 30
8431 Souders Dr. Ste. 100-A
Alexandria, VA 22304
P: 703.724.6000
F: 703.724.6800
www.studio30.com

EYA.146a.00



A-EB42



BUILDING SECTION UNIT C - Opt. Loft Terrace

Saint Paul's College
WASHINGTON, D.C.



BUILDING SECTIONS

UNIT - C

SEPTEMBER 10, 2007



LESSARD GROUP INC.
8511 Landonburg Pkwy. Ste. 700
Vienna, VA 22182
P. 703.760.8344
F. 703.760.8328



VJKA, INC.
20251 Century Blvd.
Cockeysville, MD 21039
P. 301.316.4389
F. 301.316.5282



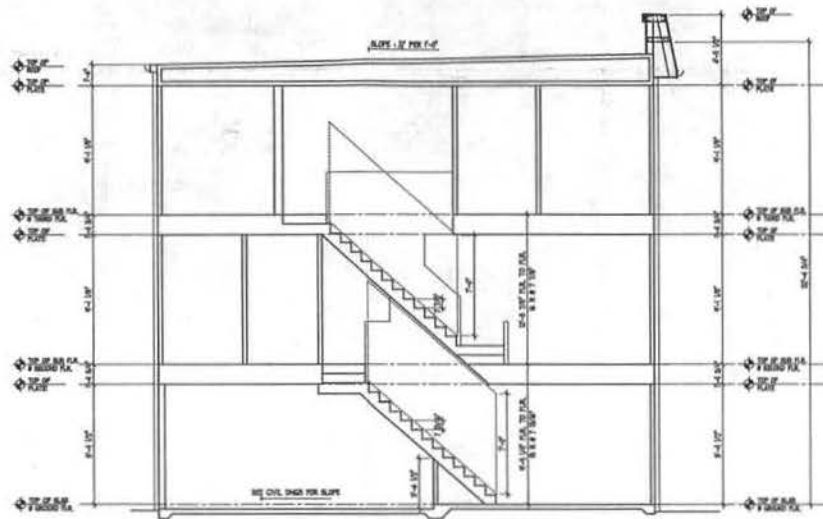
STUDIO 39
6418 Grosvenor Dr. Ste. 100A
Alexandria, VA 22304
P. 703.718.8887
F. 703.718.8888

EYA.146a.00



N.T.S. EYA146a-0-00

A-EB43



BUILDING SECTION UNIT C -Standard

Saint Paul's College
WASHINGTON, D.C.



BUILDING SECTIONS
UNIT - C

SEPTEMBER 10, 2007



LESSARD GROUP INC.
9511 Leesburg Pike, Ste. 700
Vienna, VA 22182
P: 703.762.8194
F: 703.762.8198
www.lessardgroup.com



VIKI, INC.
3233 Calverly Blvd.
Germantown, MD 20874
P: 301.264.4100
F: 301.514.2242
www.viki.com



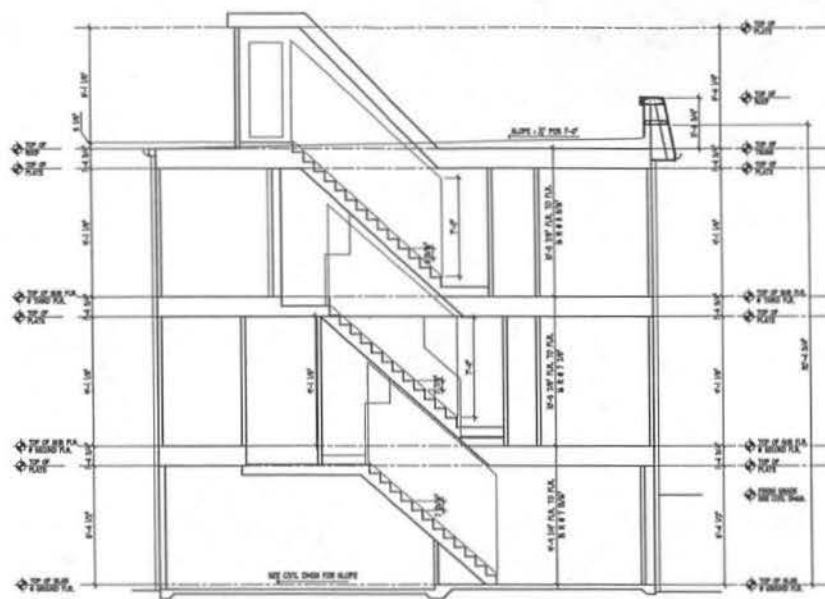
STUDIO 39
3413 Greenleaf Dr., Ste. 1004
Alexandria, VA 22304
P: 703.778.8881
F: 703.778.8883
www.studio39.com

EYA.145a.00



N.T.S. EYA145a-0-04

A-EB44



BUILDING SECTION UNIT C - Opt. Roof Access

Saint Paul's College
WASHINGTON, D.C.



BUILDING SECTIONS

UNIT - C

SEPTEMBER 10, 2007



LESSARD GROUP INC.
8511 Leesburg Pike, Ste. 300
Vienna, VA 22184
P: 703.740.8394
F: 703.740.8398



VIKI INC.
20251 Century Blvd.
Crownpoint, VA 22624
P: 703.335-4200
F: 703.335-2262

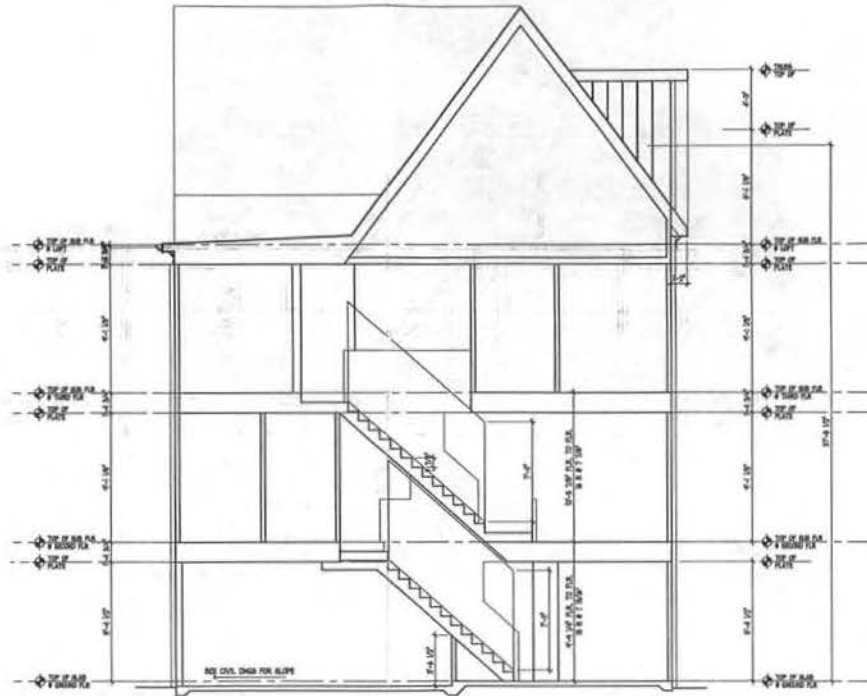


STUDIO 39
8416 Greenway Dr., Ste. 100-A
Arlington, VA 22204
P: 703.712-8900
F: 703.712-8903

EYA.145a.00



A-EB45



BUILDING SECTION UNIT C - Alt. Stone Elevation (Standard)

Saint Paul's College
WASHINGTON, D.C.



BUILDING SECTIONS

UNIT - C

SEPTEMBER 10, 2007



LESSARD GROUP INC.
8521 Lembug Pike, Ste. 702
Vienna, VA 22182
P: 703.760.5544
F: 703.760.5528
www.lessardgroup.com



VIKKA INC.
2021 Century Blvd
Crownsville, MD 21031
P: 301.914.4120
F: 301.914.1381
www.vikka.com



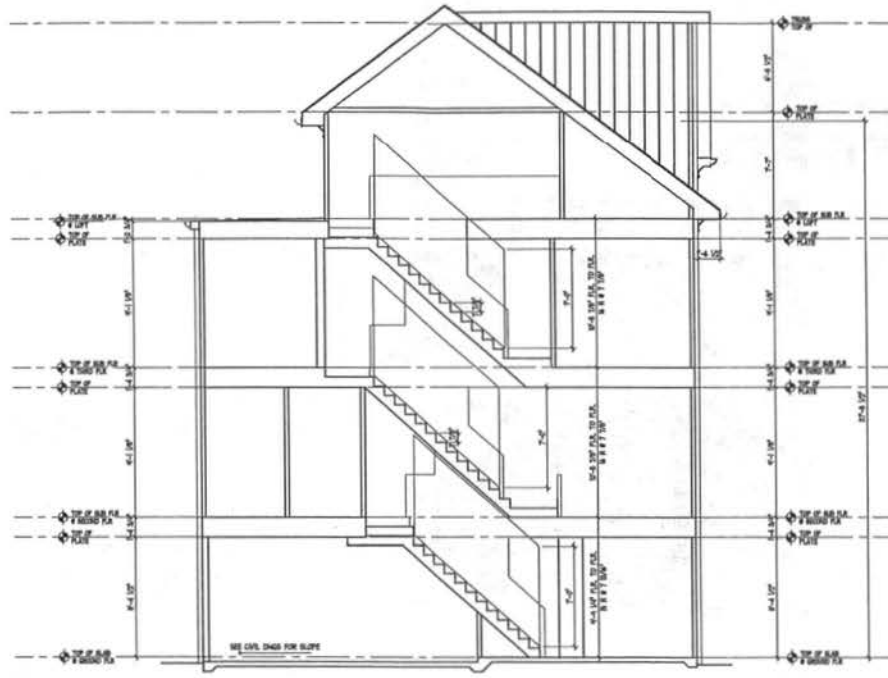
STUDIO 28
8415 Occoquan Dr., Ste. 100A
Arlington, VA 22210
P: 703.773.6200
F: 703.775.6203
www.studio28.com

EYA.146a.00



N.T.S. EYA146AA-6-046

A-EB46



BUILDING SECTION UNIT C - Alt. Stone Elevation (Optional)

Saint Paul's College
WASHINGTON, D.C.

THE NEIGHBORHOODS OF
EYA

BUILDING SECTIONS

UNIT - C

SEPTEMBER 10, 2007



LESSARD GROUP INC.
8321 Leesburg Pike, Ste. 708
Vienna, VA 22182
P: 703.360.8314
F: 703.760.9338



VIKI, INC.
20251 Century Blvd.
Germantown, MD 20874
P: 301.914-4100
F: 301.914-2262



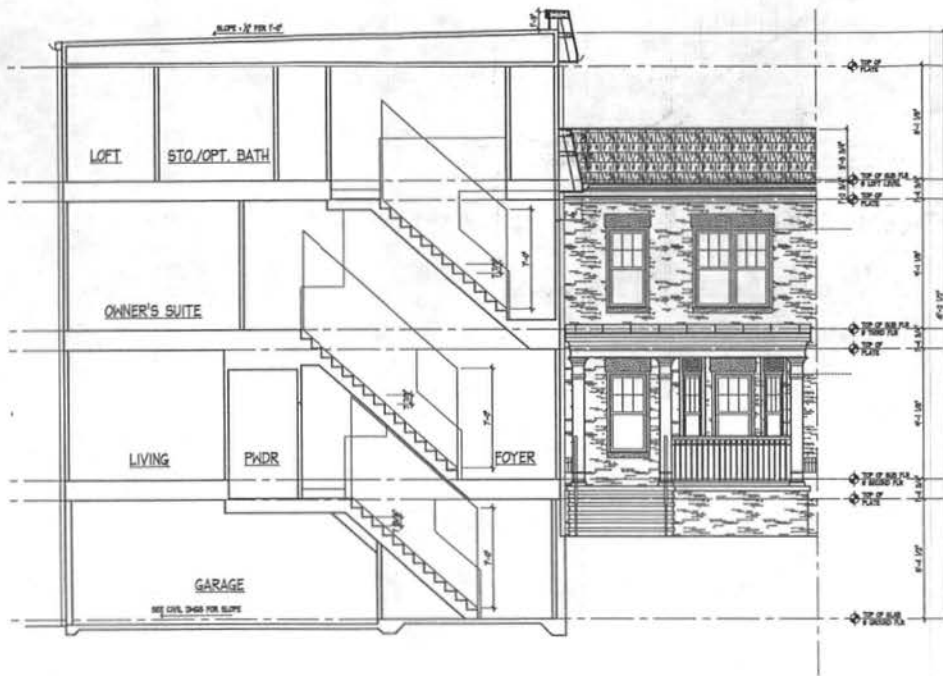
STUDIO 39
6418 Greenleaf Dr. Ste. 100-A
Alexandria, VA 22304
P: 703.719.8999
F: 703.719.8999

EYA.146a.00

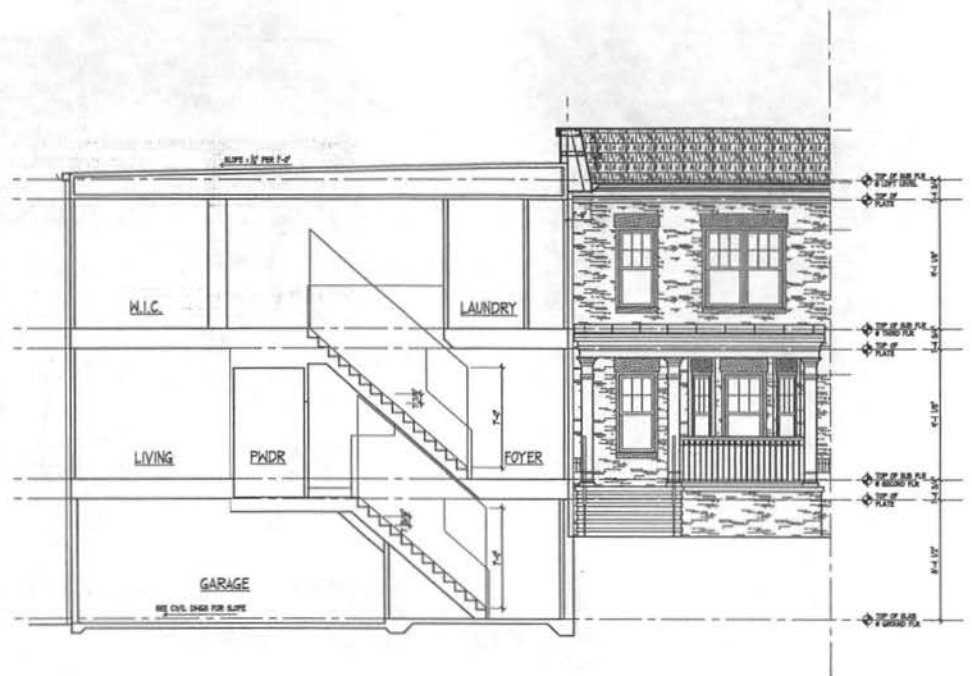


N.T.S. EYA146A-0-047

A-EB47



BUILDING SECTION UNIT D - Opt. Loft Terrace



BUILDING SECTION UNIT D - Standard

Saint Paul's College
WASHINGTON, D.C.



BUILDING SECTIONS

UNIT - D

SEPTEMBER 10, 2007



LESSARD GROUP INC.
8531 Leesburg Pike, Ste. 700
Vienna, VA 22182
P: 703.765.5394
F: 703.765.1108
www.lessardgroup.com



VIKA, INC.
2023 Century Blvd
Greenwood, MD 20679
P: 301.518.4100
F: 301.518.2242
www.vika.com

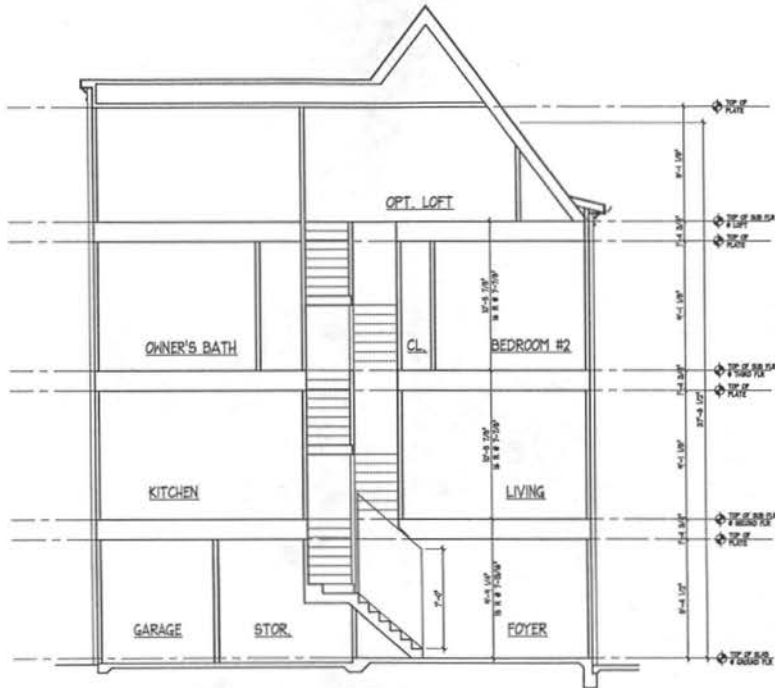


STUDIO 39
9413 Greenway Dr., Ste. 100-A
Alexandria, VA 22310
P: 703.278.8300
F: 703.278.8003
www.studio39.com

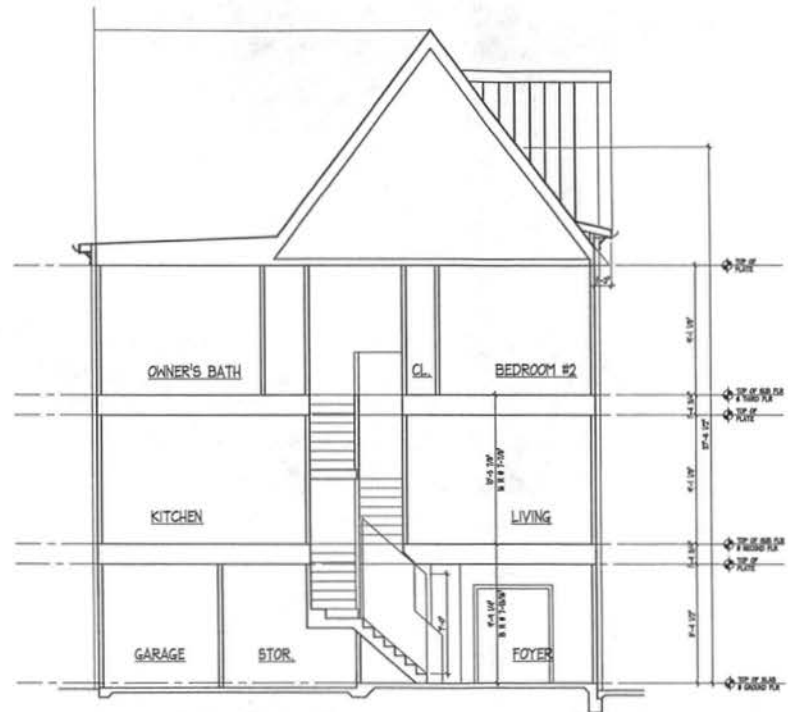
EYA.146a.00



A-EB48



BUILDING SECTION UNIT E - Alt. Stone Elevation w/ Loft



BUILDING SECTION UNIT E - Alt. Stone Elevation

Saint Paul's College
WASHINGTON, D.C.



BUILDING SECTIONS

UNIT - E

SEPTEMBER 10, 2007



LESSARD GROUP INC.
9331 Leesburg Pike, Ste. 700
Manassas, VA 22182
P: 703.795.8344
F: 703.795.8328



VIKA INC.
2025 Century Blvd.
Cockeysville, MD 21034
P: 301.315.4100
F: 301.315.2362

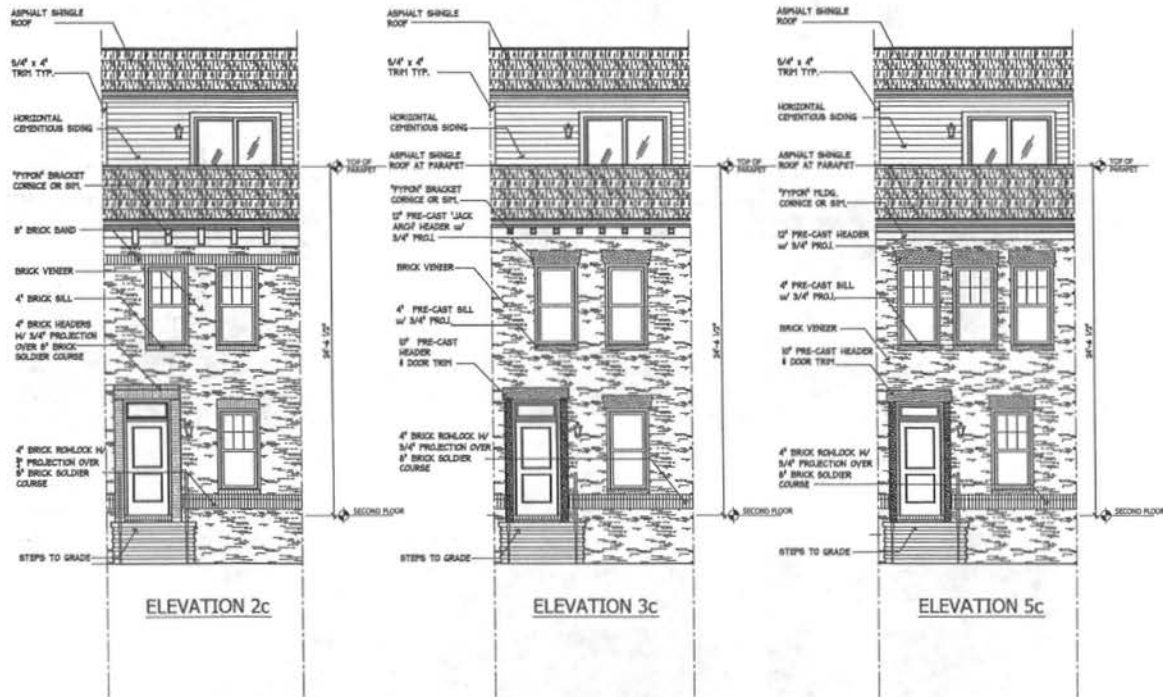


STUDIO 39
5418 Greenbelle Dr., Ste. 100 A
Arlington, VA 22204
P: 703.715.6100
F: 703.715.6100

EYA.146a.00



A-EB49



Saint Paul's College
WASHINGTON, D.C.



UNIT TYPE 'A'
FRONT ELEVATIONS

SEPTEMBER 10, 2007



LESSARD GROUP INC.
8521 Landburg Pike Ste. 700
Vienna, VA 22182
P: 703.765.5244
F: 703.765.5228



VFA, INC.
3021 Century Blvd.
Germantown, MD 20894
P: 301.268.4300
F: 301.218.2262



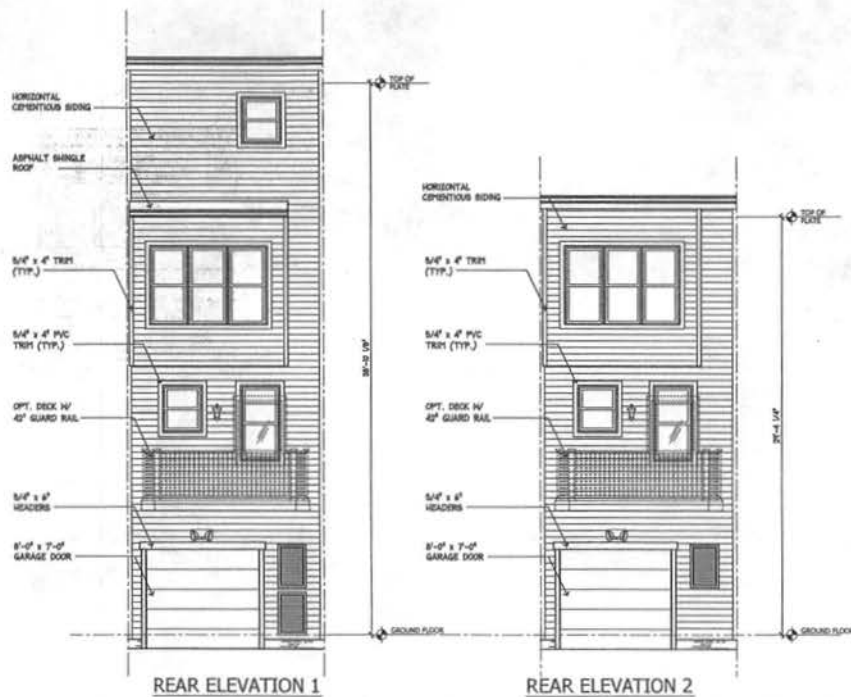
STUDIO 39
6418 Greenway Dr. Ste. 100-A
Alexandria, VA 22304
P: 703.719.8200
F: 703.719.8202

EYA.146a.00



EYA146aArch

A-A4



Saint Paul's College
WASHINGTON, D.C.



UNIT TYPE 'A'
REAR ELEVATIONS
SEPTEMBER 10, 2007



LESSARD GROUP INC.
8321 Leesbury Pike, Ste. 300
Vienna, VA 22188
P: 703.760.5244
F: 703.760.9328
www.lessardgroup.com



VIKIA, INC.
20231 Century Blvd.
Centersville, MO 20814
P: 301.914.4100
F: 301.914.2162
www.vikia.com

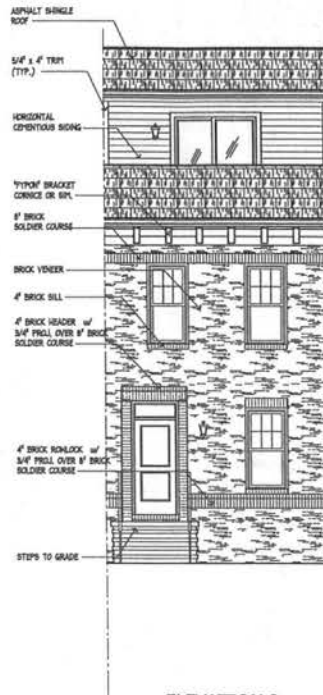


STUDIO 39
6418 Grosvenor Dr. Ste. 100-A
Alexandria, VA 22304
P: 703.774.6800
F: 703.774.8803
www.studio39.com

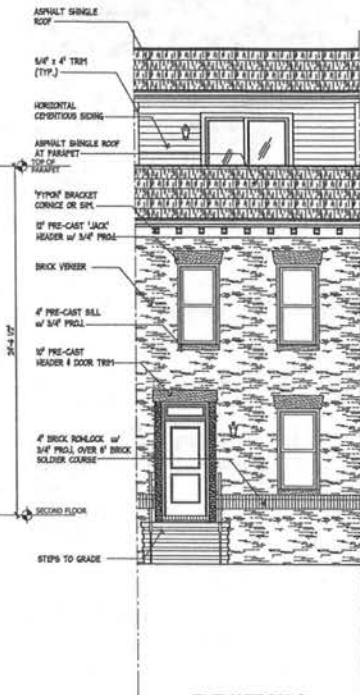
EYA.146a.00



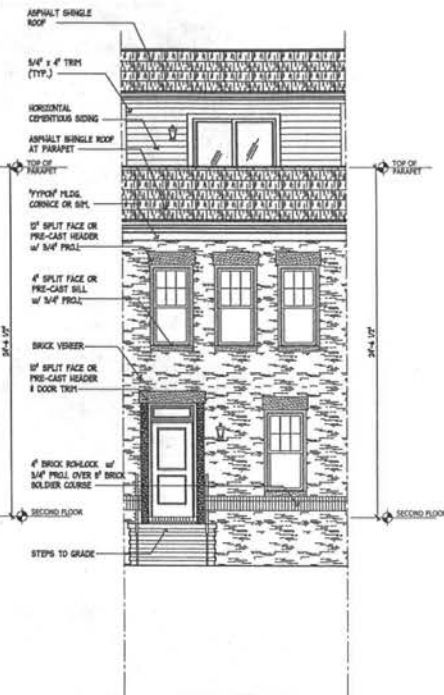
A-A5



ELEVATION 2c



ELEVATION 3c



ELEVATION 5c

Saint Paul's College
WASHINGTON, D.C.



UNIT TYPE 'B'

FRONT ELEVATIONS

SEPTEMBER 10, 2007



LESSARD GROUP INC.
3021 Lombard Pike, Ste. 700
Vienna, VA 22182
P: 703.768.8244
F: 703.768.8238



VIKA INC.
2071 Century Blvd.
Greenhouse, MD 20914
P: 301.318.4100
F: 301.318.2882



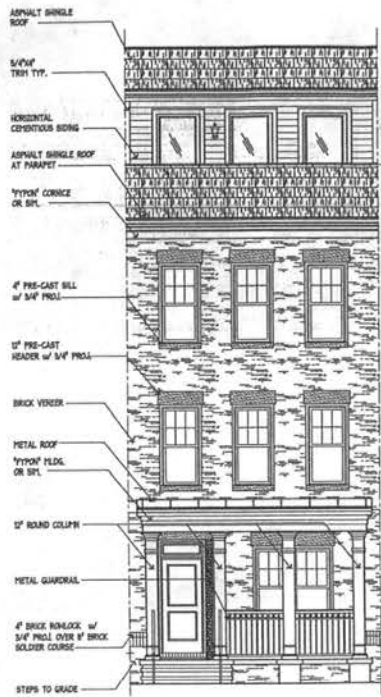
STUDIO 39
6418 Greenleaf Dr., Ste. 100A
Arlington, VA 22204
P: 703.713.8800
F: 703.713.8000

EYA.146a.00

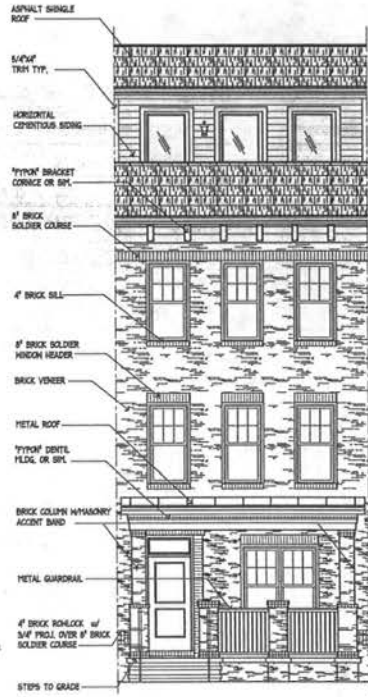


N.T.S. EYA146a00v

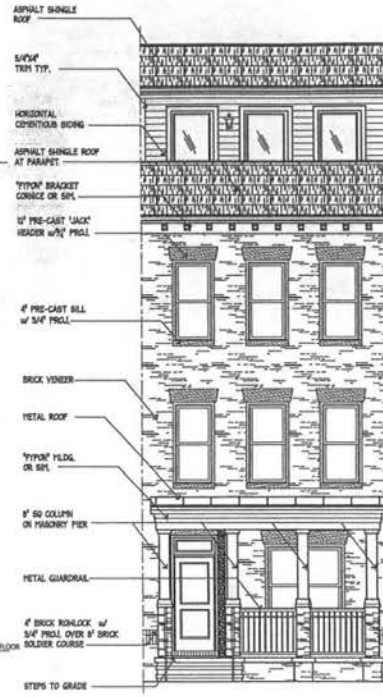
A-B4



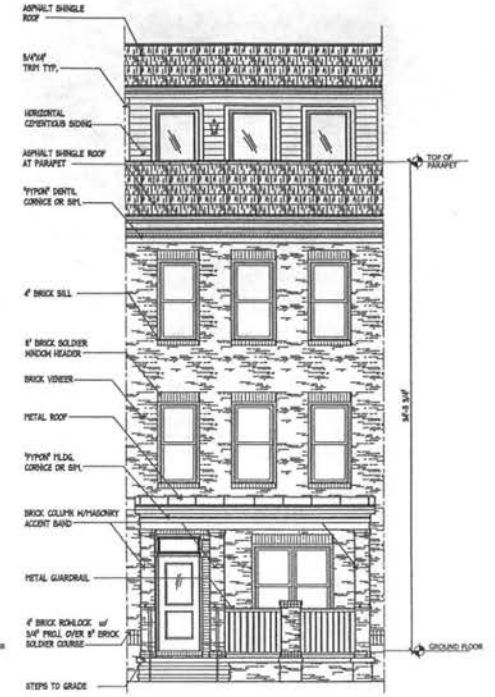
ELEVATION 1



ELEVATION 2



ELEVATION 3



ELEVATION 4

Saint Paul's College
WASHINGTON, D.C.



UNIT TYPE 'C'

FRONT ELEVATIONS

SEPTEMBER 10, 2007



LESSARD GROUP INC.
8521 Leesburg Pike, Ste. 700
Vienna, VA 22182
P: 703.760.8344
F: 703.760.8328
www.lessardgroup.com



VIKI INC.
2021 Century Blvd.
Crownsville, MD 21031
P: 301.916.4100
F: 301.916.2182
www.viki.com



STUDIO 39
6418 Greenbelt Dr. Ste. 100-A
Baltimore, VA 22109
P: 703.718.6000
F: 703.718.0089
www.studio39.com

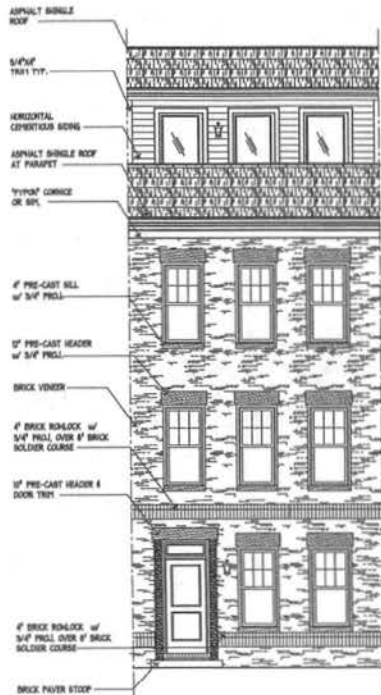
EYA.145a.00



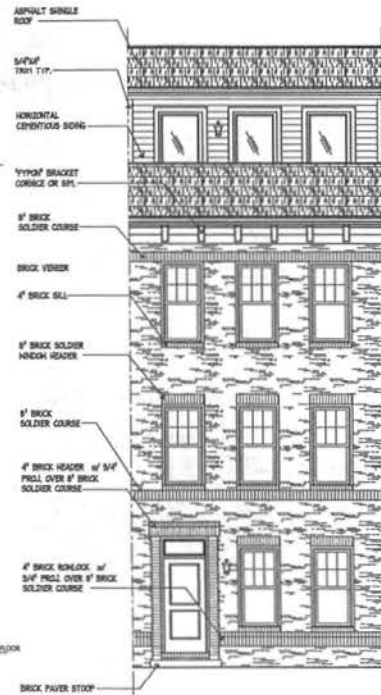
EYA145aCalcut

A-C1

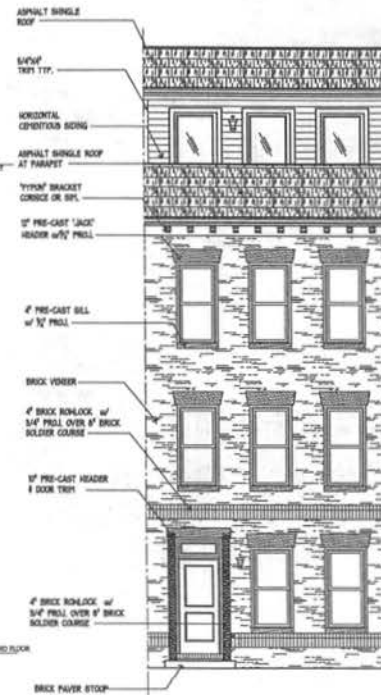
THIS DOCUMENT IS THE PROPERTY OF EYA AND IS NOT TO BE REPRODUCED OR TRANSMITTED IN ANY FORM OR BY ANY MEANS, ELECTRONIC OR MECHANICAL, INCLUDING PHOTOCOPYING, RECORDING, OR BY ANY INFORMATION STORAGE AND RETRIEVAL SYSTEM, WITHOUT PERMISSION IN WRITING FROM EYA. THIS DOCUMENT IS THE PROPERTY OF EYA AND IS NOT TO BE REPRODUCED OR TRANSMITTED IN ANY FORM OR BY ANY MEANS, ELECTRONIC OR MECHANICAL, INCLUDING PHOTOCOPYING, RECORDING, OR BY ANY INFORMATION STORAGE AND RETRIEVAL SYSTEM, WITHOUT PERMISSION IN WRITING FROM EYA.



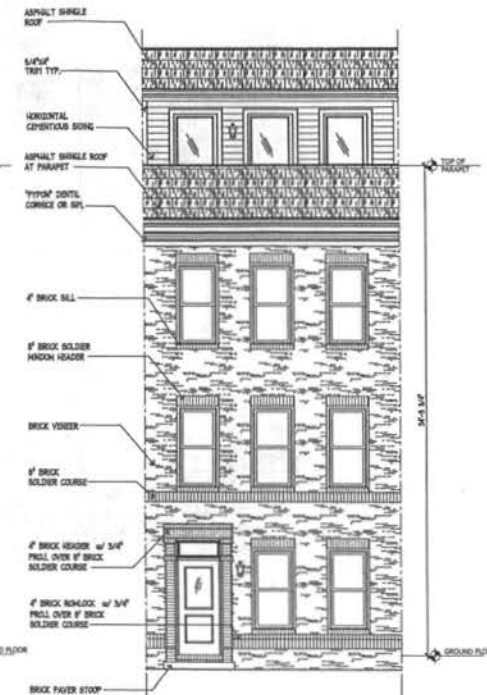
ELEVATION 1a



ELEVATION 2a



ELEVATION 3a



ELEVATION 4a

Saint Paul's College
WASHINGTON, D.C.

THE NEIGHBORHOODS OF
EYA

UNIT TYPE 'C'

FRONT ELEVATIONS

SEPTEMBER 10, 2007



LESSARD GROUP INC.
8521 Leesburg Pike, Ste. 700
Vienna, VA 22182
P: 703.762.8144
F: 703.762.8188
www.lessardgroup.com



VIKI INC.
20201 Century Blvd.
Centersville, MO 64530
P: 304.948.1100
F: 304.948.2262
www.viki.com

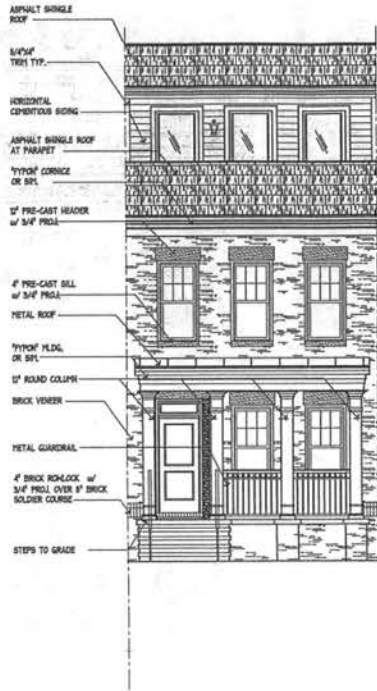


STUDIO 39
6418 Greenleaf Dr. Ste. 100-A
Alexandria, VA 22304
P: 703.719.8800
F: 703.719.8800

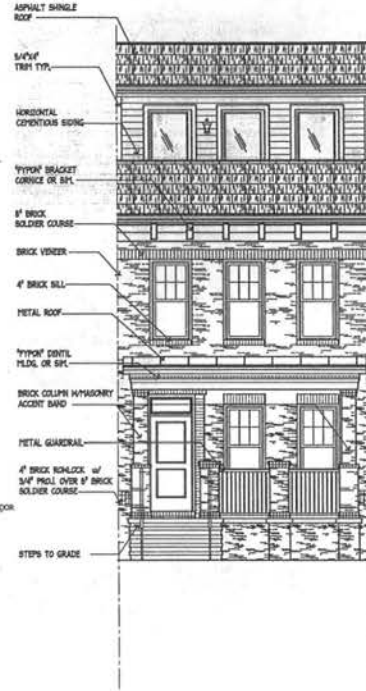
EYA.146a.00



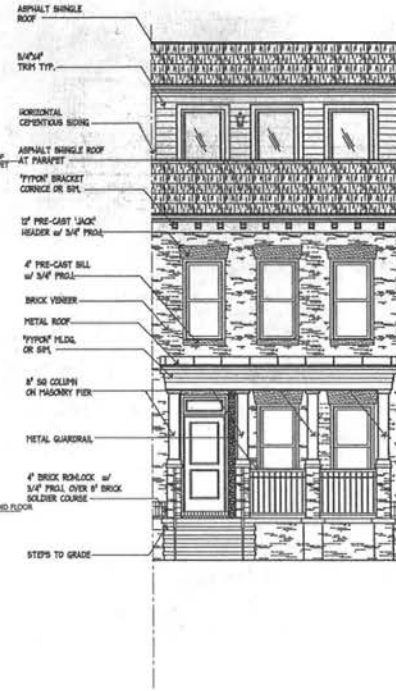
EYA/46a/00



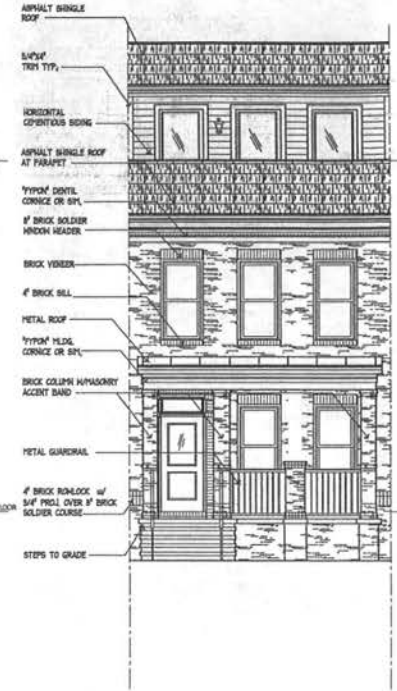
ELEVATION 1b



ELEVATION 2b



ELEVATION 3b



ELEVATION 4b

Saint Paul's College
WASHINGTON, D.C.



UNIT TYPE 'C'
FRONT ELEVATIONS

SEPTEMBER 10, 2007



LESSARD GROUP INC.
8521 Leesburg Pike, Ste. 700
Vienna, VA 22184
P: 703.966.8344
F: 703.760.8328
www.lessardgroup.com



VIXA INC.
20251 Century Blvd.
Germantown, MD 20874
P: 301.916.4100
F: 301.916.2800
www.vixa.com

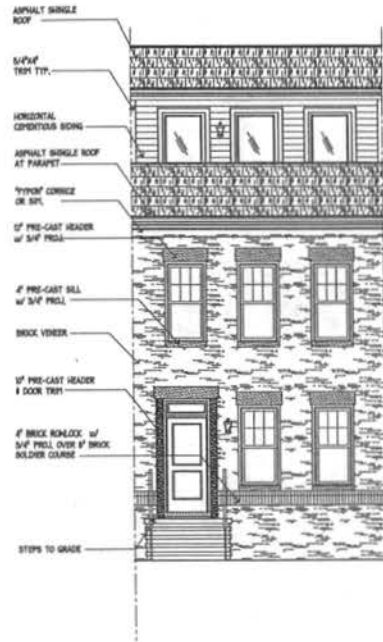


STUDIO 39
6416 Greenleaf Cr., Ste. 100-A
Alexandria, VA 22310
P: 703.716.6100
F: 703.719.6100
www.studio39.com

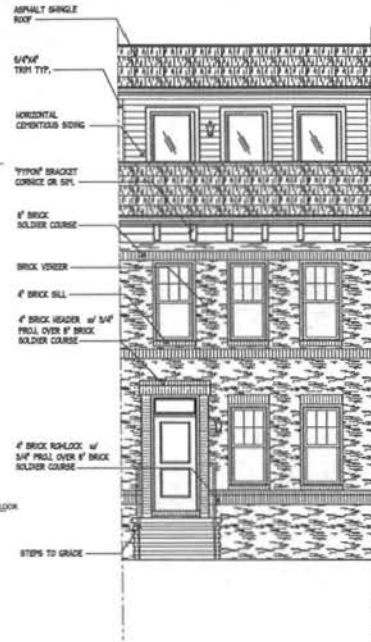
EYA.146a.00



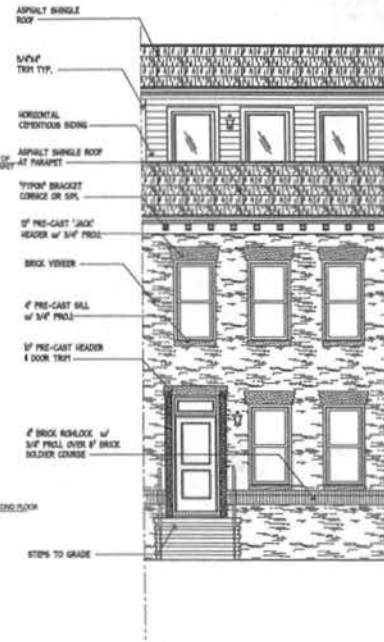
A-C3



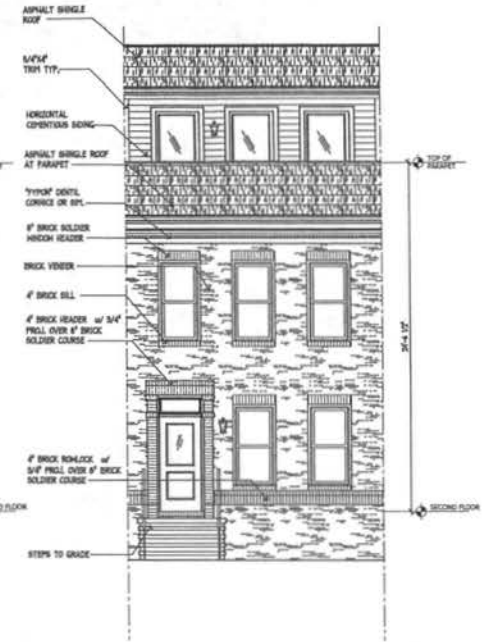
ELEVATION 1c



ELEVATION 2c



ELEVATION 3c



ELEVATION 4c

Saint Paul's College
 WASHINGTON, D.C.



UNIT TYPE 'C'

FRONT ELEVATIONS

SEPTEMBER 10, 2007



LESSARD GROUP INC.
 8521 Leesberry Pk. Ste. 700
 Vienna, VA 22182
 P: 703.760.8384
 F: 703.760.8328
 www.lessardgroup.com



VIKI INC.
 20251 Century Blvd.
 Germantown, MD 20874
 P: 301.918.4100
 F: 301.918.2282
 www.viki.com



STUDIO 39
 6416 Greenleaf Dr. Ste. 100-A
 Alexandria, VA 22310
 P: 703.719.6000
 F: 703.719.6003
 www.studio39.com

EYA.145a.00



EYA145a.00

A-C6



REAR ELEVATION 1e

REAR ELEVATION 1

Saint Paul's College
WASHINGTON, D.C.



UNIT TYPE 'C'

FRONT ELEVATIONS

SEPTEMBER 10, 2007



LESSARD GROUP INC.
8321 Leesburg Pike, Ste. 700
Vienna, VA 22186
P: 703.760.8344
F: 703.760.8338
www.lessardgroup.com



VIKA, INC.
23251 Century Blvd.
Greenwood, MD 20634
P: 301.316.4300
F: 301.316.2262
www.vika.com



STUDIO 39
8416 Greenlawn Dr., Ste. 100-4
Alexandria, VA 22304
P: 703.718.6500
F: 703.718.6603
www.studio39.com

EYA.146a.00



EYA146a.00

A-C6

NOTHING HEREIN SHALL BE CONSIDERED AN OFFER OF ANY FINANCIAL PRODUCT OR SERVICE. THE INFORMATION CONTAINED HEREIN IS FOR INFORMATIONAL PURPOSES ONLY AND DOES NOT CONSTITUTE AN OFFER OF ANY FINANCIAL PRODUCT OR SERVICE. THE INFORMATION CONTAINED HEREIN IS NOT INTENDED TO BE USED AS A BASIS FOR INVESTMENT DECISIONS. THE INFORMATION CONTAINED HEREIN IS NOT INTENDED TO BE USED AS A BASIS FOR INVESTMENT DECISIONS. THE INFORMATION CONTAINED HEREIN IS NOT INTENDED TO BE USED AS A BASIS FOR INVESTMENT DECISIONS.



ELEVATION 2 (SIDE)



ELEVATION 1 (SIDE)

Saint Paul's College
WASHINGTON, D.C.



UNIT TYPE 'E'

SIDE ELEVATIONS

SEPTEMBER 10, 2007



LESSARD GROUP INC.
8321 Leesburg Pike, Ste. 700
Vienna, VA 22188
P: 703.760.8394
F: 703.760.8328



VIKI INC.
20251 Century Blvd.
Centersville, MO 65007
P: 301.958.4100
F: 301.958.2262



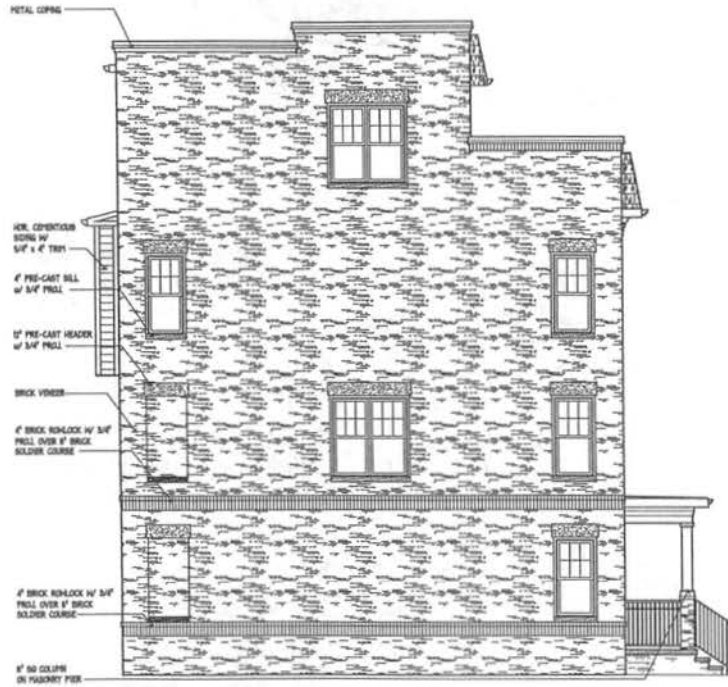
STUDIO 39
6418 Greenleaf Dr. Ste. 100-A
Minnetonka, MN 55310
P: 953.719.6900
F: 953.719.6903

EYA.146a.00

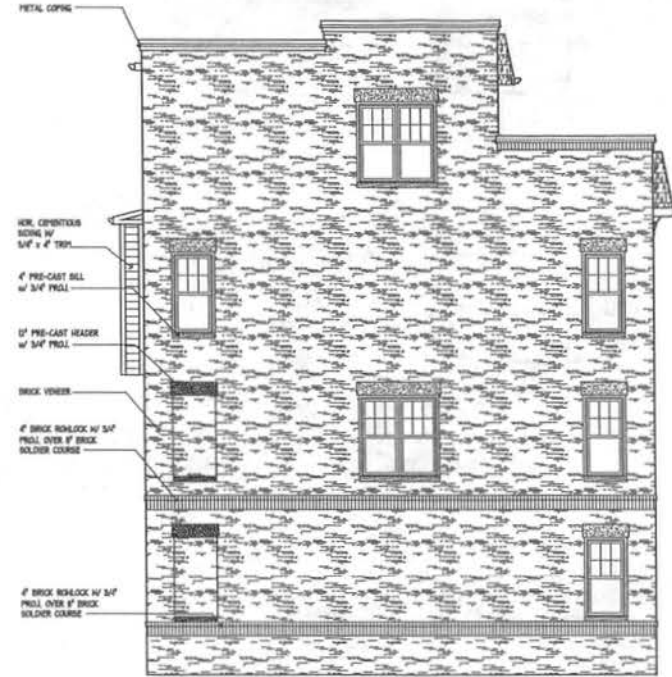


EYA446a.dwg

A-E3



SIDE ELEVATION 1



SIDE ELEVATION 1a

Saint Paul's College
WASHINGTON, D.C.



TYPICAL SIDE ELEVATIONS

SEPTEMBER 10, 2007



LESSARD GROUP INC.
8521 Landonville Pike, Ste. 700
Vienna, VA 22182
P. 703.760.8944
F. 703.760.8328
www.lessardgroup.com



VIKA, INC.
20231 Century Blvd.
Germantown, MD 20876
P. 301.884.4100
F. 301.818.2282
www.vika.com



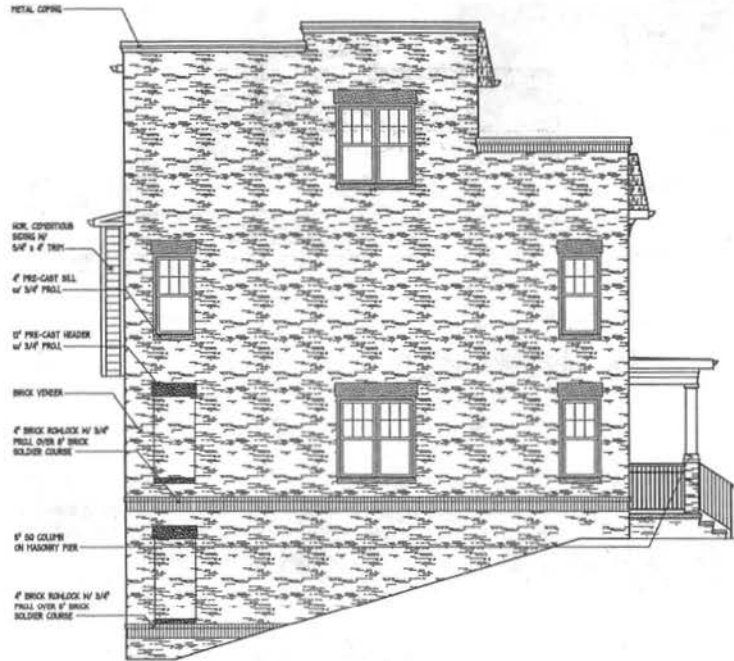
STUDIO 39
3414 Greenway Dr., Ste. 100-A
Alexandria, VA 22304
P. 703.719.6000
F. 703.719.6003
www.studio39.com

EYA.146s.00

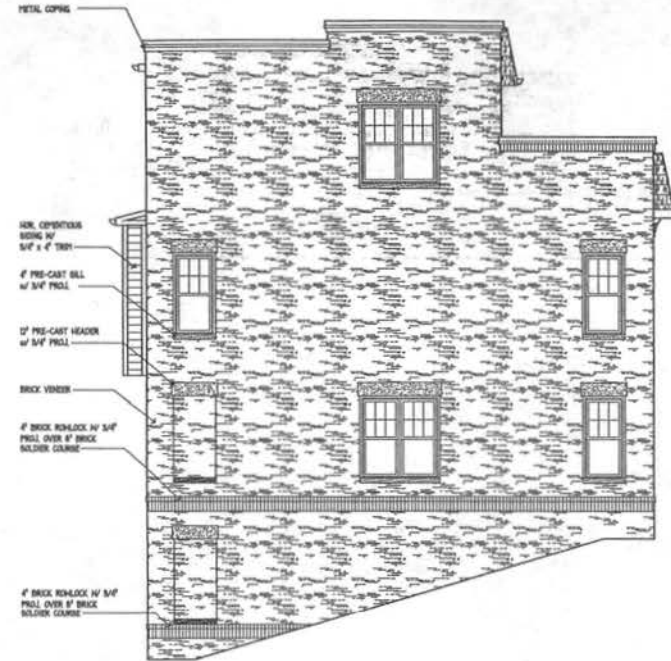


N.T.S. EYA Multiple view

A-S1



SIDE ELEVATION 1b



SIDE ELEVATION 1c

Saint Paul's College
WASHINGTON, D.C.

THE NEIGHBORHOODS OF
EYA

TYPICAL SIDE ELEVATIONS

SEPTEMBER 10, 2007



LESSARD GROUP INC.
8121 Leesburg Pike, Ste. 700
Vienna, VA 22182
P: 703.760.5344
F: 703.760.9328
www.lessardgroup.com



VIKA, INC.
20211 Century Blvd.
Greenwood, MD 20874
P: 301.916.4500
F: 301.916.2292
www.vika.com



STUDIO 39
6410 Greenlee Dr., Ste. 100A
Arlington, VA 22210
P: 703.719.6000
F: 703.719.6002
www.studio39.com

EYA.146a.00

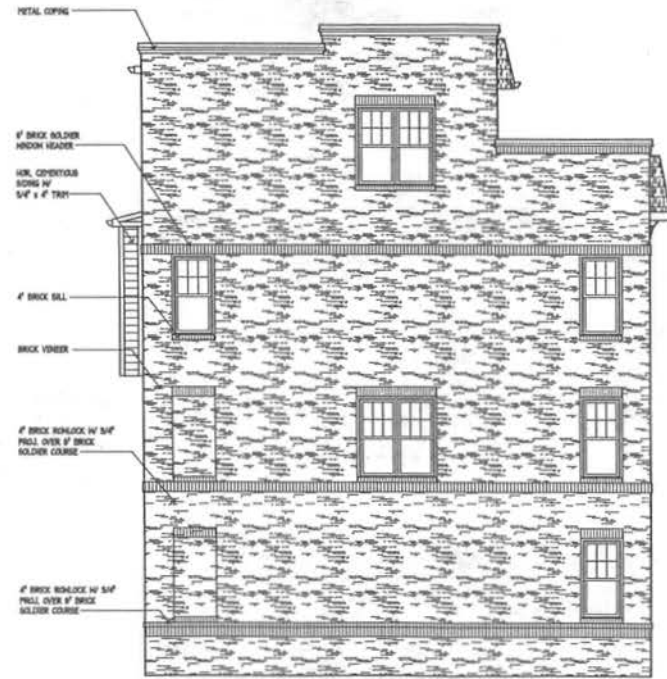


N.T.S. EYA146Side-01or

A-S2



SIDE ELEVATION 2



SIDE ELEVATION 2a

Saint Paul's College
WASHINGTON, D.C.

THE NEIGHBORHOODS OF
EYA

TYPICAL SIDE ELEVATIONS

SEPTEMBER 10, 2007



LESSARD GROUP INC.
8223 Leesburg Pike, Ste. 700
Vienna, VA 22182
P: 703.262.2344
F: 703.262.8328
www.lessardgroup.com



VIKA, INC.
30231 Century Blvd.
Germantown, MD 20874
P: 301.816.4100
F: 301.816.2242
www.vika.com



STUDIO 39
4142 Connecticut Dr. Ste. 100
Alexandria, VA 22304
P: 703.728.6200
F: 703.728.6202
www.studio39.com

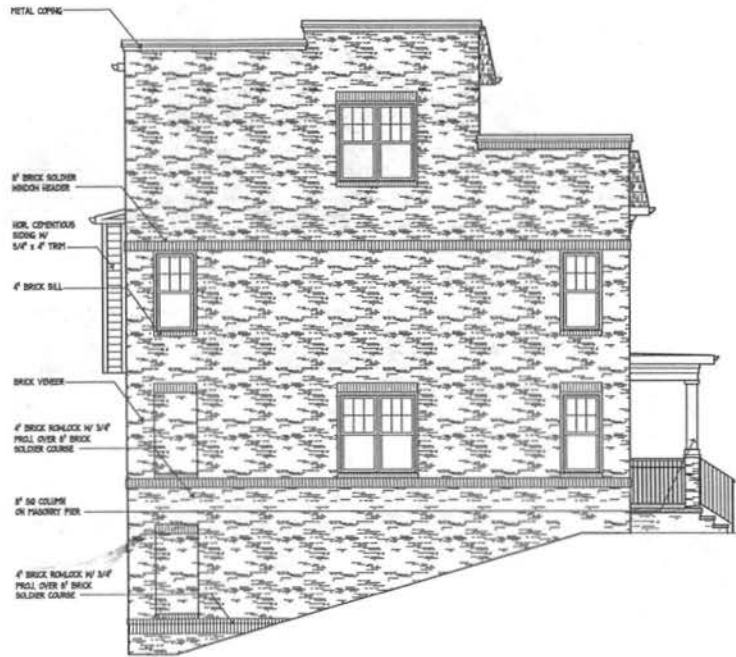
EYA.146a.00



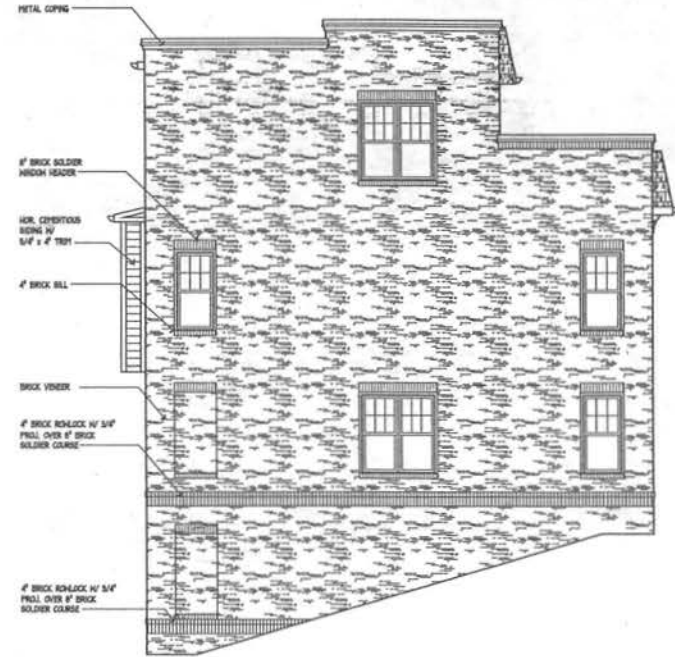
N.T.S.

EYA\46a\00.dwg

A-S3



SIDE ELEVATION 2b



SIDE ELEVATION 2c

Saint Paul's College
WASHINGTON, D.C.



TYPICAL SIDE ELEVATIONS

SEPTEMBER 10, 2007



LESSARD GROUP INC.
8321 Leesburg Pike, Ste. 200
Vienna, VA 22182
P: 703.760.8394
F: 703.760.8328
www.lessardgroup.com



VIKA, INC.
20221 Century Blvd.
Germantown, MD 20874
P: 301.916.4100
F: 301.916.2262
www.vika.com



STUDIO 39
6418 Greenbelt Dr., Ste. 100-A
Alexandria, VA 22304
P: 703.719.0000
F: 703.719.0901
www.studio39.com

EYA-146a.00



A-S4