

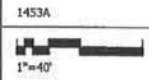
Saint Paul's College
WASHINGTON, D.C.

DETAILED DRY UTILITY PLAN

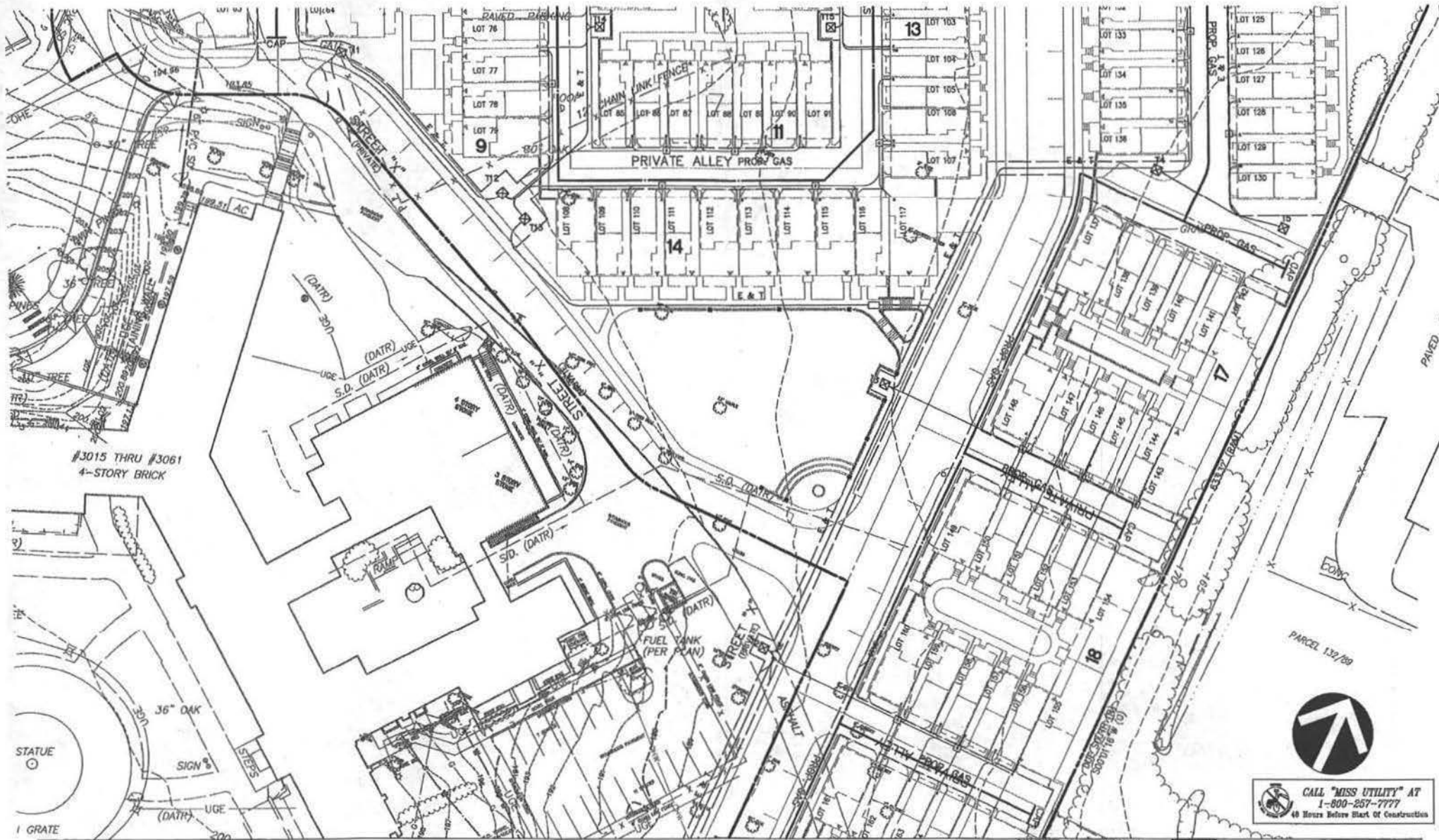


SEPTEMBER 10, 2007

LAYOUT: 24-DETAILED DRY UTIL. 11x17, Plotted By: Ouler
C:\1000-1000\1437\dwg\utility\143702.dwg, - Sep 04, 2007 AT 3:18:15 PM



C-24



CALL "MISS UTILITY" AT
1-800-267-7777
48 Hours Before Start of Construction



Saint Paul's College
WASHINGTON, D.C.
THE NEIGHBORHOODS OF
EYA

DETAILED DRY UTILITY PLAN

SEPTEMBER 10, 2007

LAYOUT: 25 DETILED DRY UTILITY, Plotted By: Gantler
1006-1500\155\pauls\main\utility\151010.dwg - Sep 05, 2007 AT 2:18:58 PM

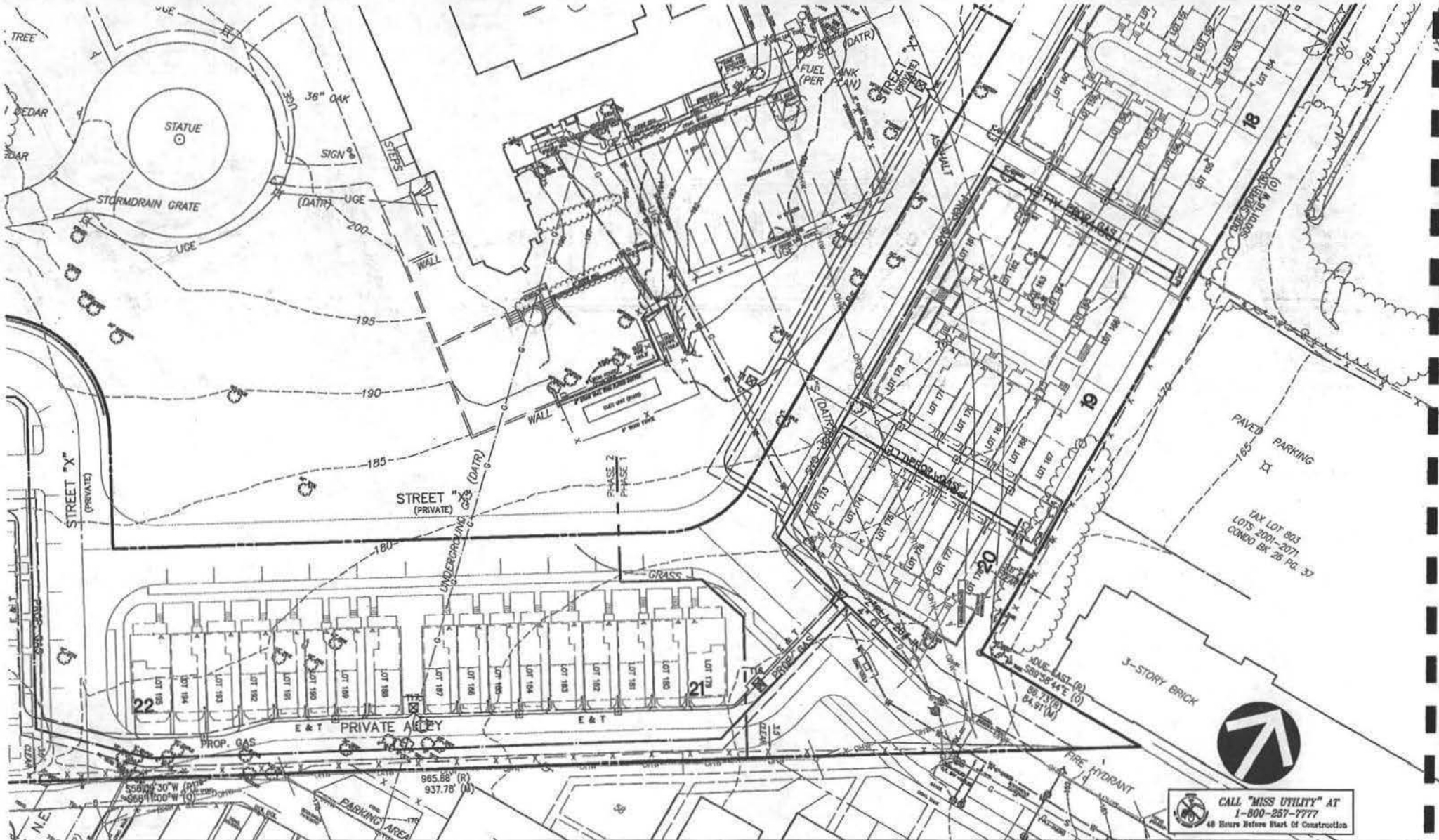
LESSARD GROUP INC.
2021 Landburg Pk. Dr. 700
Shrew, VA 22152
P: 703.360.8141
F: 703.360.8138
www.lessardgroup.com

VMA, INC.
2021 Century Blvd.
Glenview, VA 22116
P: 703.214.4100
F: 703.214.3442
www.vma.com

STUDIO 38
6418 Glenview Dr., Ste. 100 A
Glenview, VA 22116
P: 703.378.6500
F: 703.378.6500
www.studio38.com

1453A
1"=40'

C-25



Saint Paul's College
 WASHINGTON, D.C.
 THE NEIGHBORHOODS OF
EYA

DETAILED DRY UTILITY PLAN

SEPTEMBER 10, 2007

LAYOUT OF DETAILED DRY UTIL. 11x17, Plotted By: Senter
 W:\1000-1800\1462\util\plan\murray\1453105.dwg, 7/29/07, 1:20:06 PM

**CALL "MISS UTILITY" AT
 1-800-257-7777
 48 Hours Before Start of Construction**

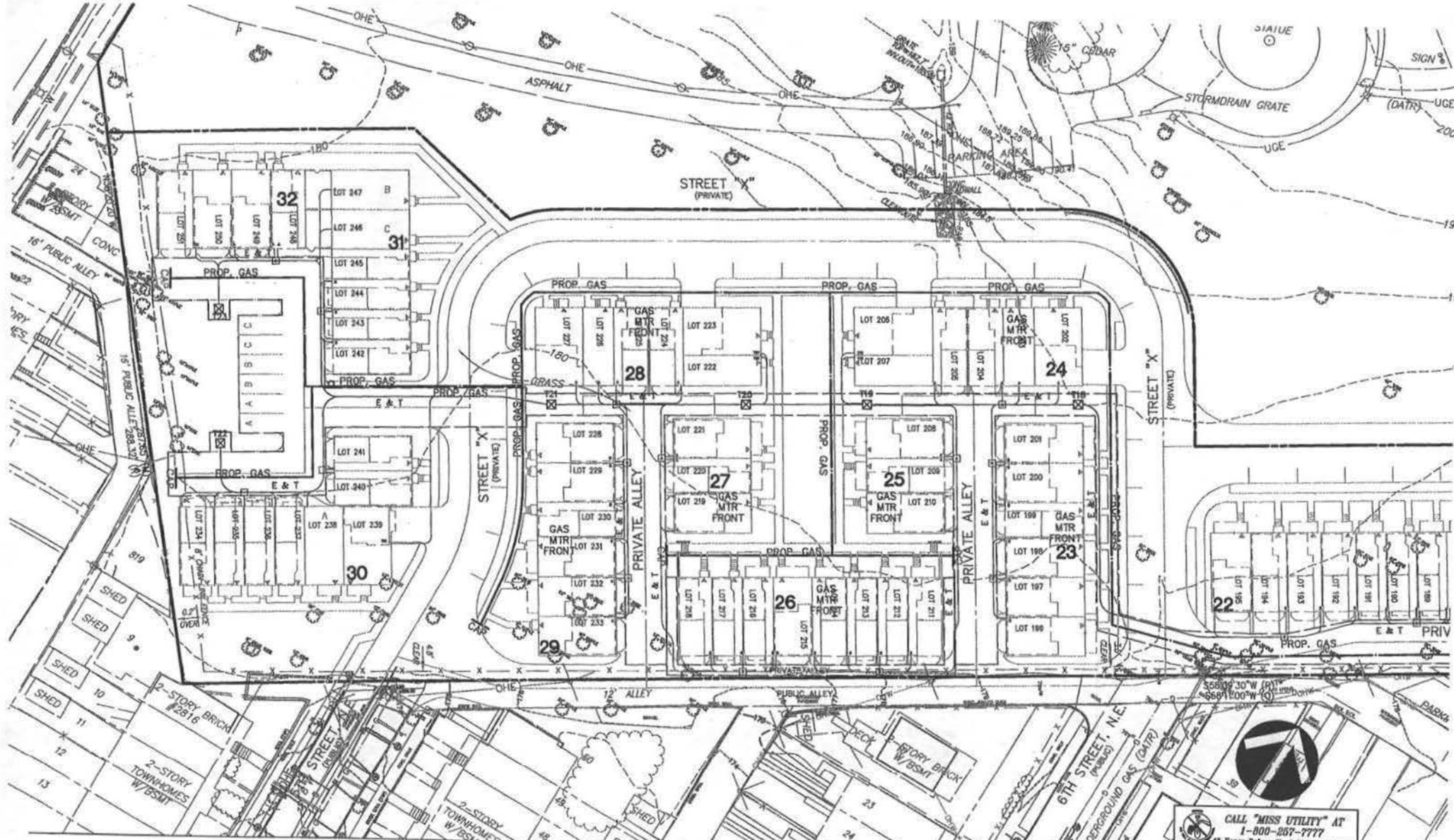
LESSARD GROUP INC.
 8221 Leesboro Pike, 2nd. Fl.
 Vienna, VA 22181
 P: 703.368.8144
 F: 703.368.8158
 www.leppardgroup.com

VENA, INC.
 3001 Century Blvd.
 Germantown, MD 20874
 P: 301.914.4100
 F: 301.914.2318
 www.vena.com

STUDIO 3D
 8400 Greenleaf Dr., Ste. 120-A
 Alexandria, VA 22310
 P: 703.714.4100
 F: 703.714.8003
 www.studio3d.com

1453A

 1"=40'



Saint Paul's College

WASHINGTON, D.C.

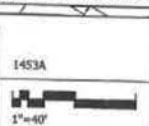
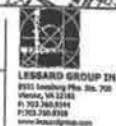
THE NEIGHBORHOODS OF



LAYOUT: 27-DETAILED DRY UTIL. 11/07, Plotted by: Ginter
 C:\V000-1902\143\p\std\ginter\143100.dwg -- Sep 04, 2007 AT 3:05:18 PM

DETAILED DRY UTILITY PLAN

SEPTEMBER 10, 2007




CALL "MISS UTILITY" AT
 1-800-257-7777
 48 Hours Before Start of Construction


C-27

LEGEND

--- LIMITS OF DISTURBANCE

 STABILIZED CONSTRUCTION ENTRANCE



 CALL "MISS UTILITY" AT
1-800-257-7777
48 Hours Before Start of Construction

Saint Paul's College
WASHINGTON, D.C.

CONCEPT SEDIMENT & EROSION CONTROL PLAN

SEPTEMBER 10, 2007



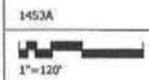
LAYOUT: 28, Drawing: 802 11x17, Plotted by: Guntar
N:\1000-1380\483\user\preliminary\5435100.dwg -- Sep 06, 2007 AT 11:10:36 AM

OWNER AGREES TO BE RESPONSIBLE FOR OBTAINING NECESSARY PERMITS AND APPROVALS FROM ALL AFFECTED AGENCIES. THESE PLANS ARE NOT TO BE REPRODUCED OR COPIED IN ANY FORM OR BY ANY MEANS, ELECTRONIC OR MECHANICAL, WITHOUT THE WRITTEN PERMISSION AND SIGNATURE OF LESARD GROUP INC.


LESARD GROUP INC.
8331 Landings Place, Ste. 700
Manassas, VA 22185
P: 703.760.8244
F: 703.760.8238
www.lesardgroup.com


VFA, INC.
30221 Century Blvd.
Germantown, MD 20874
P: 301.894.4200
F: 301.894.2882
www.vfa.com


STUDIO 39
8416 Greenleaf Ln., Ste. 109-A
Alexandria, VA 22304
P: 703.791.6200
F: 703.791.6982
www.studio39.com



C-28

Project Name: Saint Paul's College (1453A)	
Date: 6-Sep-07	
Residential Parking Tabulation	
Garage Parking Spaces	
1-Car Garage Spaces	30
2-Car Garage Spaces	428
On-street Parking Spaces (Parallel)	74
Off-Street Parking (Surface)	10
Total Residential Parking	542
Note: The total residential parking noted above is based on the scope of the proposed site improvements as of August 15th, 2007.	



Saint Paul's College
WASHINGTON, D.C.

OVERALL CIRCULATION PLAN

SEPTEMBER 10, 2007

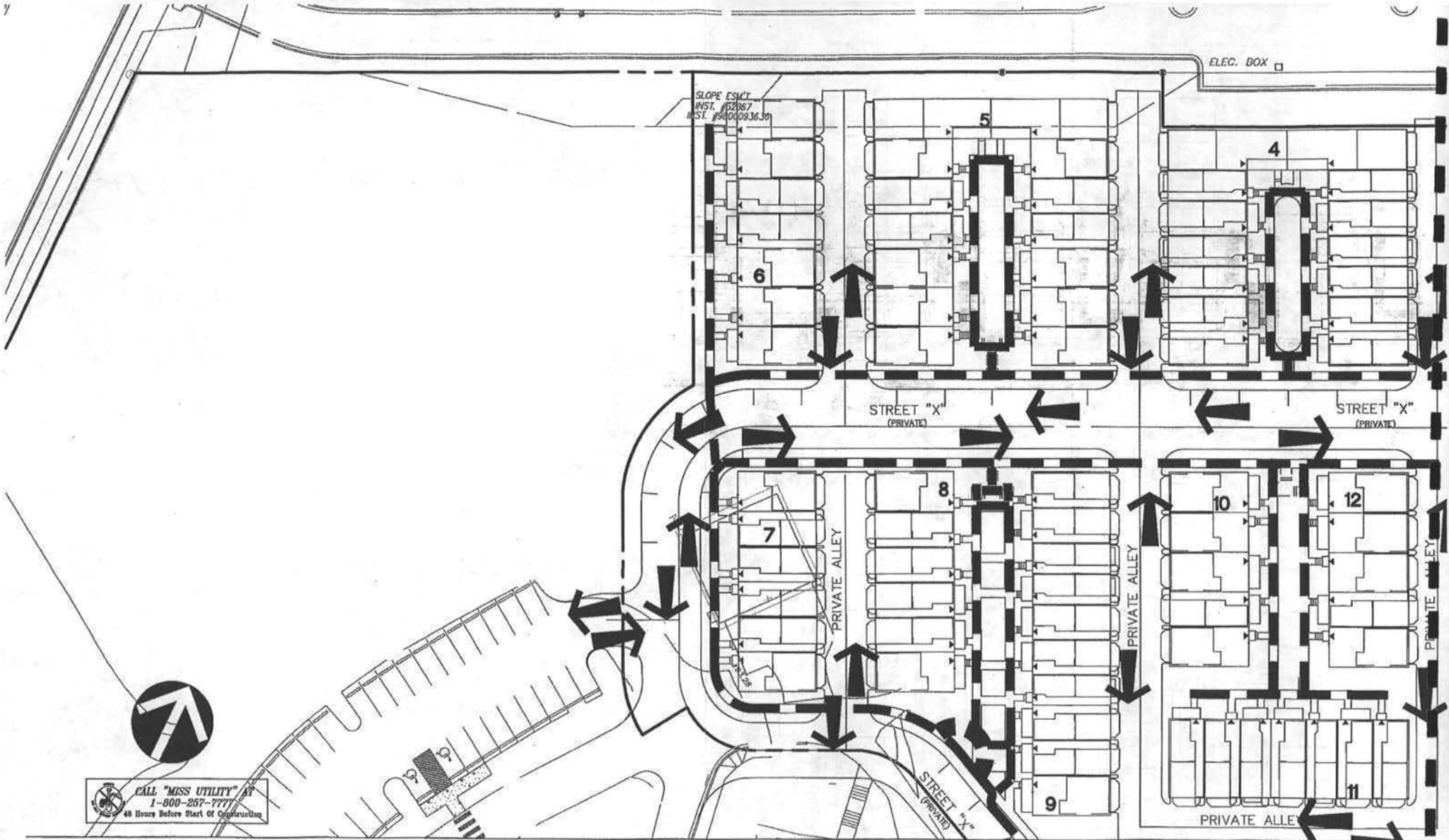


LAYOUT: 28_CIRCULATION PLAN - T107, Plotted By: Quinlan
C:\11069-1960\1453A\cadd\p\residential\1453310.dwg - Sep 06, 2007 AT 11:04:27 AM

OWNER SHALL BE RESPONSIBLE FOR VERIFYING ALL UTILITIES AND OTHER FEATURES SHOWN IN THESE PLANS. THESE PLANS ARE NOT TO BE REPRODUCED, COPIED, OR USED IN ANY MANNER WITHOUT THE WRITTEN PERMISSION AND CONSENT OF LEGARD GROUP INC.



CALL "MISS UTILITY" AT
1-800-257-7777
48 Hours Before Start of Construction



CALL "MISS UTILITY" AT
1-800-267-7777
48 Hours Before Start Of Construction

Saint Paul's College
WASHINGTON, D.C.



LAYOUT: 31_CIRCULATION PLAN - 11X17, Plotted By: Ginter
K:\1000-1800\1453\pdr\mhz\1453150.dwg - Sep. 06, 2007 AT 11:07:51 AM

DETAILED CIRCULATION PLAN

SEPTEMBER 10, 2007

EXISTING UTILITY SHOWN FOR REFERENCE ONLY. THE CONTRACTOR OR PROPRIETOR HAS OTHER NECESSARY SERVICES IN THESE AREAS. THESE PLANS ARE NOT TO BE REPRODUCED OR COPIED IN ANY MANNER WITHOUT THE WRITTEN PERMISSION OF THE ARCHITECT OR ENGINEER. THE CONTRACTOR SHALL BE RESPONSIBLE FOR VERIFYING THE LOCATION AND DEPTH OF ALL UTILITIES PRIOR TO CONSTRUCTION. THE CONTRACTOR SHALL BE RESPONSIBLE FOR OBTAINING ALL NECESSARY PERMITS AND APPROVALS FROM THE APPROPRIATE AGENCIES.

LESSARD GROUP INC.
8021 Landings Pk. Dr. #10
Manassas, VA 22120
P: 703.790.8244
F: 703.790.8233
www.lessardgroup.com

VINKA INC.
20351 Century Blvd.
Springfield, VA 22150
P: 703.338.4100
F: 703.338.6242
www.vinka.com

STUDIO 39
6418 Greenidge Dr. Ste. 100-A
Alexandria, VA 22304
P: 703.338.6000
F: 703.338.6000
www.studio39.com

1453A



C-31




CALL "MISS UTILITY" AT
1-800-257-7777
 48 Hours Before Start Of Construction

Saint Paul's College
 WASHINGTON, D.C.

DETAILED CIRCULATION PLAN

SEPTEMBER 10, 2007



LAYOUT: 22_CIRCULATION PLAN - 13X17, Plotted By: Duster
 R:\000-1507\1457\user\gwinthorpe\1457150.dwg -- Sep 06, 2007 AT 11:07:43 AM

DESIGN GROUP AND ARCHITECT ASSUME NO RESPONSIBILITY FOR THE ACCURACY OF THESE PLANS. THESE PLANS ARE NOT TO BE CONSIDERED CONTRACT DOCUMENTS UNLESS SPECIFICALLY IDENTIFIED AS SUCH. ANY CHANGES TO THESE PLANS MUST BE APPROVED BY THE DESIGN GROUP AND ARCHITECT.



LESSARD GROUP INC.
 8021 Landings Pkwy, Ste. 700
 Vienna, VA 22181
 P: 703.760.8344
 F: 703.760.8333
 www.lessardgroup.com



VEKA, INC.
 20253 Century Blvd.
 Capersville, MO 26914
 P: 703.716.4200
 F: 703.716.2200
 www.veka.com

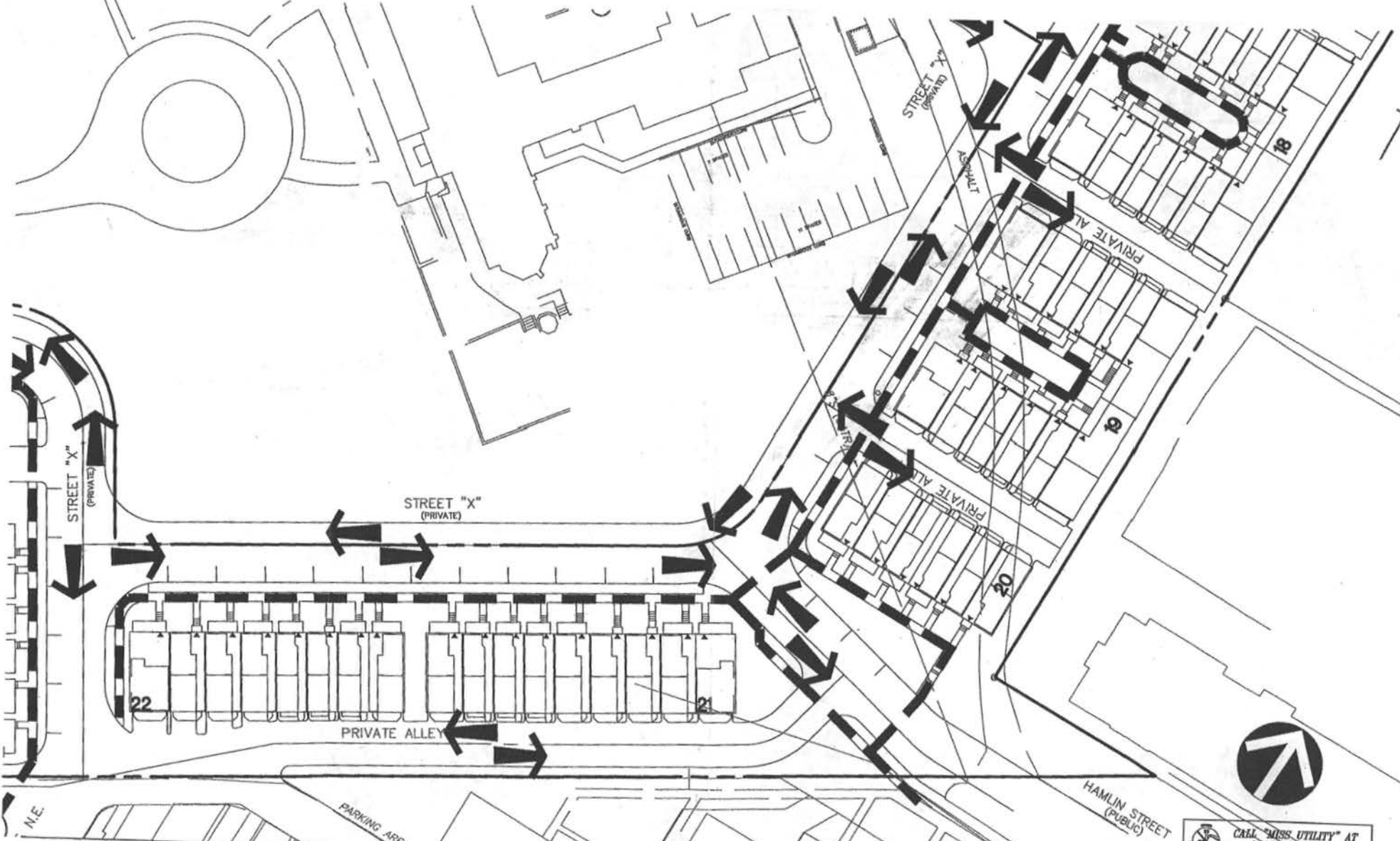


STUDIO 39
 3424 Spradling Dr., Ste. 100-A
 Alexandria, VA 22304
 P: 703.716.4200
 F: 703.716.6200
 www.studio39.com

1453A



C-32



Saint Paul's College
WASHINGTON, D.C.

DETAILED CIRCULATION PLAN

SEPTEMBER 10, 2007



LAYOUT: 31_CIRCULATION PLAN - 11x17, Plotted By: Gwiler
X:\1000-1800\1453\used\graphics\1453130.dwg - Sep. 04, 2007 AT 11:07:28 AM

PROFESSIONAL ENGINEER OR ARCHITECT MUST SEAL AND SIGN THESE PLANS. THESE PLANS ARE NOT TO BE REPRODUCED OR COPIED IN ANY FORM OR BY ANY MEANS, ELECTRONIC OR MECHANICAL, INCLUDING PHOTOCOPYING, RECORDING, OR BY ANY INFORMATION STORAGE AND RETRIEVAL SYSTEM.

LESSARD GROUP INC.
9321 Leesburg Pike, Ste. 700
Falls Church, VA 22041
P: 703.290.8294
F: 703.290.8228
www.lessardgroup.com

VHA, INC.
22291 Century Blvd.
Chantilly, VA 20151
P: 703.818.4100
F: 703.818.5128
www.vha.com

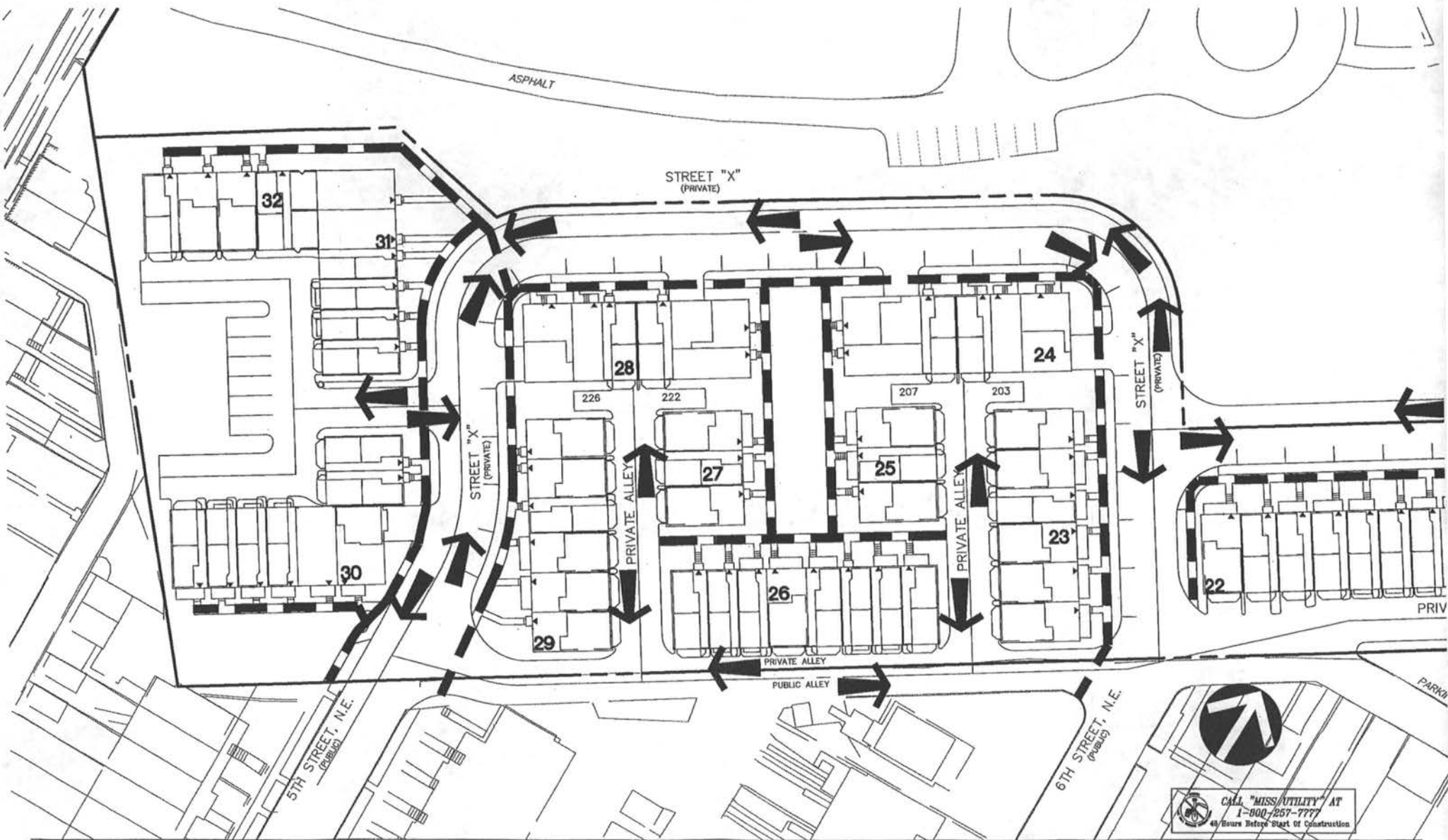
STUDIO 29
6418 Greenbush Dr., Ste. 100-A
Arlington, VA 22204
P: 703.718.6000
F: 703.718.6000
www.studio29.com

CALL "MISS UTILITY" AT
1-800-257-7777
48 Hours Before Start of Construction

1453A



C-33



CALL "MISS/UTILITY" AT
 1-800-257-7777
 48 Hours Before Start of Construction

Saint Paul's College
 WASHINGTON, D.C.

DETAILED CIRCULATION PLAN

SEPTEMBER 10, 2007



LAYOUT: 33A_CIRCULATION PLAN - 1107, Plotted By: Dunlap
 K:\1000-1800\453\lead\p\m\m\y\453100.dwg - Sep 08, 2007 AT 10:59:31 AM

THIS LAYOUT AND/OR THE GRAPHICALLY REPRESENTED DATA CONTAINED HEREIN IS UNOFFICIAL AND NOT TO BE USED FOR CONSTRUCTION. THESE PLANS ARE NOT TO BE APPROVED OR CHANGED BY ANY OTHER PARTY. ANY CHANGES TO THESE PLANS MUST BE APPROVED BY THE ARCHITECT AND/OR ENGINEER OF RECORD. ANY CHANGES TO THESE PLANS MUST BE APPROVED BY THE ARCHITECT AND/OR ENGINEER OF RECORD.

LESSARD GROUP INC.
 8011 Leesburg Pike, Ste. 700
 Vienna, VA 22182
 P: 703.700.5344
 F: 703.700.4338
 www.lessardgroup.com

VJKA, INC.
 2018 Century Blvd.
 Germantown, MD 20874
 P: 301.315.6100
 F: 301.315.2002
 www.vjka.com

STUDIO 39
 6415 Granite Dr., Ste. 150-A
 Alexandria, VA 22310
 P: 703.778.6000
 F: 703.778.6002
 www.studio39.com

1453A



1"=40'

C-33A

Project Name: Saint Paul's College (1453A)			
Date: 6-Sep-07			
Estimated Sewer Flow Computations			
*Average Sewer Flow	300 Gpcd	Gallons/capita/day	
**Peak Sewer Flow	75300 Gpcd	Gallons/capita/day	
<i>*Information obtained from DCWASA Project Design Manual, Table 3-01-1</i>			
<i>**Based on 251-downhouse units.</i>			
Estimated Water Flow Computations			
Peak Domestic Flow	300 GPM	Gallons per minute	
Peak Fire Flow	1000 GPM	Gallons per minute	
<p>Note: The estimated quantities noted above are based on the scope of the proposed improvements and the information obtained from DCWASA & EYA.</p>			

WATER & SEWER COMPUTATIONS

Project Name: Saint Paul's College (1453A)			
Date: 6-Sep-07			
Inputs:			
Depth of First Flush:			
Roofs and Sidewalks	0.30	Inches	
Parking Lots and Roadways	0.50	Inches	
Rain Intensity			
2 Year	5.28	in/hr	
15 Year	7.56	in/hr	
C Factor			
Impervious	0.9		
PerVIOUS	0.35		
Enter Site Details (Post Developed Values)			
Impervious Area:	0.00	*Roofs and Sidewalks	
	1.34	*Parking Lots and Roadways	
PerVIOUS Area:	0.10		
Total Site Area:	1.49		
CSO Area (yes or no)	yes		
Determine Site Impervious Factor:			
C=	0.84		
Determine Flow Rates for Q2(pre) and Q15(post)			
Q2(pre)=	2.76362	CFS	
Q15(post)=	10.13706	CFS	
Determine Quantity and Quality Control Volumes			
Vquality=	2432.10	CF	
Vquantity=	2789.165	CF	
Determine Flow Rate for First Flush (Qf)			
Qf=	0.603	CFS	
Determine Number of Cartridges Required (N)			
N=	18.27273	Use	19 Cartridges
Determine Rate of Release (Qr) for the system at 50% Clogged			
Qr=	0.3135	CFS	
Determine Time of Discharge (Td)			
Td=	2.453628	Hr	

SWM COMPUTATIONS (D-186)

Project Name: Saint Paul's College (1453A)			
Date: 6-Sep-07			
Inputs:			
Depth of First Flush:			
Roofs and Sidewalks	0.30	Inches	
Parking Lots and Roadways	0.50	Inches	
Rain Intensity			
2 Year	5.28	in/hr	
15 Year	7.56	in/hr	
C Factor			
Impervious	0.9		
PerVIOUS	0.35		
Enter Site Details (Post Developed Values)			
Impervious Area:	0.00	*Roofs and Sidewalks	
	0.80	*Parking Lots and Roadways	
PerVIOUS Area:	0.07		
Total Site Area:	0.67		
CSO Area (yes or no)	yes		
Determine Site Impervious Factor:			
C=	0.84		
Determine Flow Rates for Q2(pre) and Q15(post)			
Q2(pre)=	1.29810	CFS	
Q15(post)=	4.55860	CFS	
Determine Quantity and Quality Control Volumes			
Vquality=	1089.00	CF	
Vquantity=	1246.185	CF	
Determine Flow Rate for First Flush (Qf)			
Qf=	0.27	CFS	
Determine Number of Cartridges Required (N)			
N=	8.181818	Use	9 Cartridges
Determine Rate of Release (Qr) for the system at 50% Clogged			
Qr=	0.1485	CFS	
Determine Time of Discharge (Td)			
Td=	2.329259	Hr	

SWM COMPUTATIONS (SWM-163)

Saint Paul's College
WASHINGTON, D.C.



LAYOUT: SITE TABULATIONS -- 11x17, Plotted By: D:\user\1509\1507\proj\prj\dwg\1453250.dwg, -- Sep 06, 2007 AT 10:56:43 AM

SITE TABULATIONS

SEPTEMBER 10, 2007

THIS DRAWING SHALL BE STORED IN ACCORDANCE WITH THE DCWASA RECORD DRAWING AND ARCHIVE POLICY. THIS DRAWING AND ALL ITS REVISIONS SHALL BE STORED IN ACCORDANCE WITH THE DCWASA RECORD DRAWING AND ARCHIVE POLICY. ALL OTHER INFORMATION IS NOT TO BE STORED IN ACCORDANCE WITH THE DCWASA RECORD DRAWING AND ARCHIVE POLICY.



LESBARD GROUP INC.
7321 Leesville Pike, PMB 700
Norfolk, VA 23514
P: 757.742.4141
F: 757.742.4142
www.lesbardgroup.com



VIKA INC.
3281 Century Blvd.
Baltimore, MD 21211
P: 410.518.4100
F: 410.518.4101
www.vika.com



STUDIO 39
3428 Riverdale Dr., Ste. 704
Alexandria, VA 22304
P: 703.412.8800
F: 703.412.8801
www.studio39.com

1453A



Project Name: Saint Paul's College (1453A)	
Date: 6-Sep-07	
Inputs:	
Depth of First Flush:	
Roofs and Sidewalks	0.30 Inches
Parking Lots and Roadways	0.50 Inches
Rain Intensity	
2 Year	5.28 in/Hr
15 Year	7.56 in/Hr
C Factor	
Impervious	0.9
Pervious	0.35
Enter Site Details (Post Developed Values)	
Impervious Area:	0.00 *Roofs and Sidewalks
	3.03 *Parking Lots and Roadways
Pervious Area:	0.34
Total Site Area:	3.37
CSO Area (yes or no)	yes
Determine Site Impervious Factor:	
C=	0.84
Determine Flow Rates for Q2(pre) and Q15(post)	
Q2(pre)=	6.22776 CFS
Q15(post)=	22.92948 CFS
Determine Quantity and Quality Control Volumes	
Vquality=	5499.45 CF
Vquantity=	8263.145 CF
Determine Flow Rate for First Flush (Qff)	
Qff=	1.3835 CFS
Determine Number of Cartridges Required (N)	
N=	41.31818 Use 42 Cartridges
Determine Rate of Release (Qr) for the system at 50% Clogged	
Qr=	0.693 CFS
Determine Time of Discharge (Td)	
Td=	2.51048 Hr

SWM COMPUTATIONS (SWM-131 & 133)

Project Name: Saint Paul's College (1453A)	
Date: 6-Sep-07	
Inputs:	
Depth of First Flush:	
Roofs and Sidewalks	0.30 Inches
Parking Lots and Roadways	0.50 Inches
Rain Intensity	
2 Year	6.28 in/Hr
15 Year	7.56 in/Hr
C Factor	
Impervious	0.9
Pervious	0.35
Enter Site Details (Post Developed Values)	
Impervious Area:	0.00 *Roofs and Sidewalks
	1.49 *Parking Lots and Roadways
Pervious Area:	0.17
Total Site Area:	1.66
CSO Area (yes or no)	yes
Determine Site Impervious Factor:	
C=	0.84
Determine Flow Rates for Q2(pre) and Q15(post)	
Q2(pre)=	3.06768 CFS
Q15(post)=	11.29464 CFS
Determine Quantity and Quality Control Volumes	
Vquality=	2704.35 CF
Vquantity=	3065.11 CF
Determine Flow Rate for First Flush (Qff)	
Qff=	0.6705 CFS
Determine Number of Cartridges Required (N)	
N=	20.31818 Use 21 Cartridges
Determine Rate of Release (Qr) for the system at 50% Clogged	
Qr=	0.3465 CFS
Determine Time of Discharge (Td)	
Td=	2.473232 Hr

SWM COMPUTATIONS (SWM-67 & 69)

Project Name: Saint Paul's College (1453A)	
Date: 6-Sep-07	
Inputs:	
Depth of First Flush:	
Roofs and Sidewalks	0.30 Inches
Parking Lots and Roadways	0.50 Inches
Rain Intensity	
2 Year	5.28 in/Hr
15 Year	7.56 in/Hr
C Factor	
Impervious	0.9
Pervious	0.35
Enter Site Details (Post Developed Values)	
Impervious Area:	0.00 *Roofs and Sidewalks
	1.88 *Parking Lots and Roadways
Pervious Area:	0.21
Total Site Area:	2.09
CSO Area (yes or no)	yes
Determine Site Impervious Factor:	
C=	0.84
Determine Flow Rates for Q2(pre) and Q15(post)	
Q2(pre)=	3.88232 CFS
Q15(post)=	14.22036 CFS
Determine Quantity and Quality Control Volumes	
Vquality=	3412.20 CF
Vquantity=	3884.265 CF
Determine Flow Rate for First Flush (Qff)	
Qff=	0.846 CFS
Determine Number of Cartridges Required (N)	
N=	25.63636 Use 26 Cartridges
Determine Rate of Release (Qr) for the system at 50% Clogged	
Qr=	0.429 CFS
Determine Time of Discharge (Td)	
Td=	2.515064 Hr

SWM COMPUTATIONS (SWM-3)

Saint Paul's College
WASHINGTON, D.C.



SITE TABULATIONS

SEPTEMBER 10, 2007

LAYOUT 31 SITE TABULATIONS -- 11x17, Plotted By: Quier
© 1/000-1800-1453 Saint Paul's College 1/14/07 10:52:36 AM

LESLARD GROUP INC. 2525 Lesbury Pk. Dr. 705
Vienna, VA 22182
P: 703.360.8184
F: 703.360.8183
www.leslardgroup.com



VITA INC.
2021 Century Blvd.
Spartanburg, SC 29574
P: 803.535.4200
F: 803.535.3282
www.vita.com



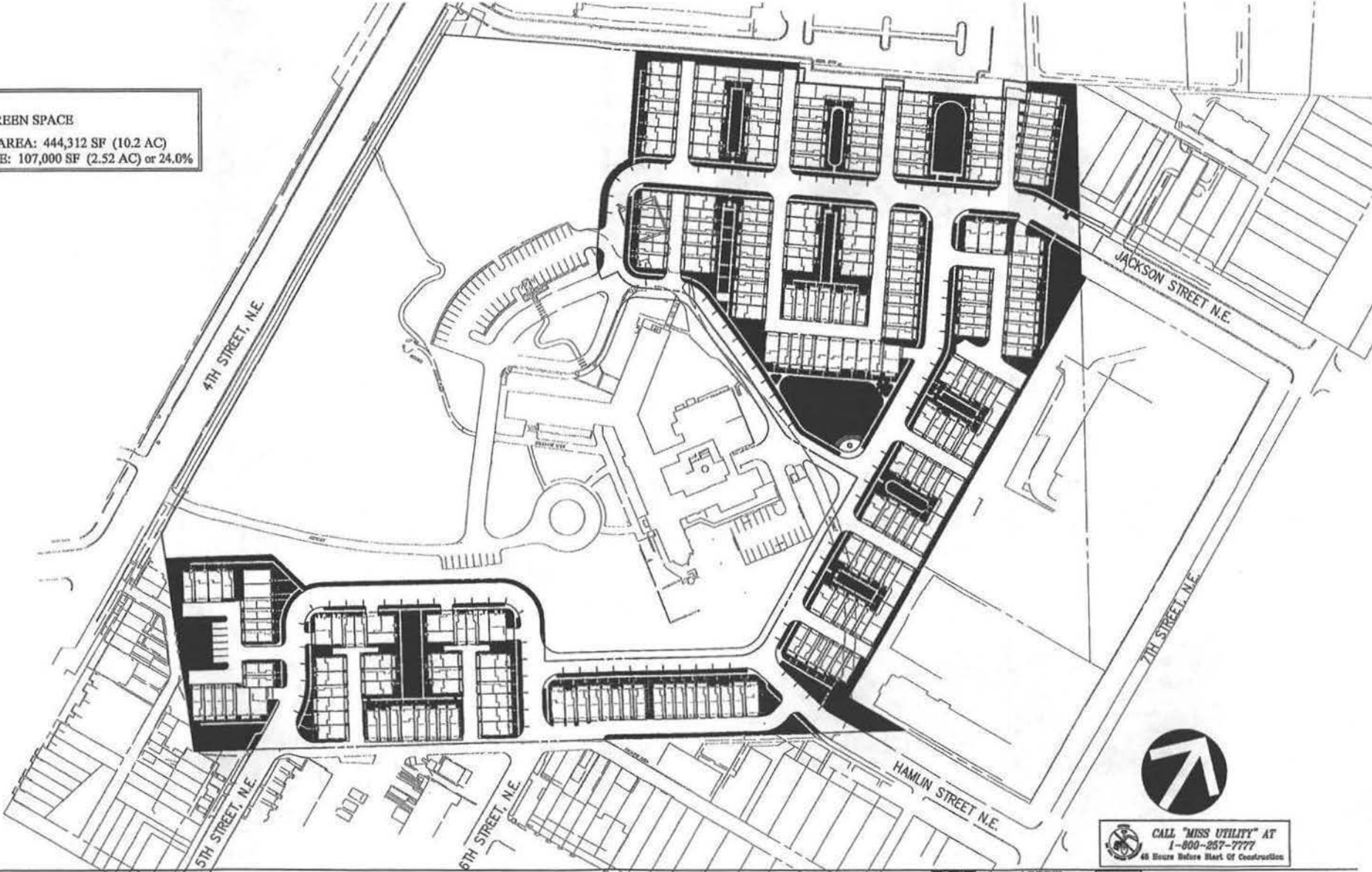
STUDIO 39
4148 Goodrich Dr. Ste. 100-A
Alexandria, VA 22310
P: 703.774.6000
F: 703.774.6000
www.studio39.com

1453A



C-35

KEY
 ■ = GREEN SPACE
 TOTAL SITE AREA: 444,312 SF (10.2 AC)
 GREEN SPACE: 107,000 SF (2.52 AC) or 24.0%



CALL "MISS UTILITY" AT
 1-800-257-7777
 48 Hours Before Start of Construction

Saint Paul's College
 WASHINGTON, D.C.

GREEN AREA PLAN

SEPTEMBER 10, 2007

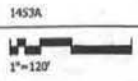


LAYOUT: 37- GREEN SPACE PLAN, Plotted By: Quasar
 P:\2000-1900\1453\layout\37\37_000_Green Space.dwg, -- Sep 05, 2007 AT 11:58:18 AM

LESGARD GROUP INC.
 5322 Leesburg Pike, Ste. 700
 Vienna, VA 22182
 Tel: 703.760.8044
 F: 703.760.8330
 www.lesgardgroup.com

VIFA, INC.
 3031 Century Blvd.
 Silver Spring, MD 20910
 P: 301.516.4200
 F: 301.418.2168
 www.vifa.com

SITUSUDO 39
 5416 Greenleaf Dr., Ste. 100-A
 Alexandria, VA 22304
 P: 703.724.6800
 F: 703.724.8000
 www.situsudo.com



C-36

Minimum Building Setbacks

Bldg #	Front Provided ^A	Side Yard Setback				Rear Yard Setback			
		Controlling Lot #****	Bldg height at Side	Required	Provided ^A	Controlling Lot #	Bldg height at Rear	Required	Provided ^A
1	10.0	R 8	44.40	11.1	12.6	8	45.17	15.1	4.0*****
		L 1	44.80	NA***	NA				
2	7.1	R 9	46.00	NA***	NA	15	46.80	15.6	13.0
		L 15	46.00	11.5	1.5*****				
3	7.1	R 22	45.50	11.4	1.3*****	20	44.40	15.0	13.0
		L 16	45.17	NA***	NA				
4	7.1	R 23, 36	45.50	NA***	NA	27	46.73	15.6	13.0
		L 30	48.67	12.2	1.0*****				
5	7.1	R 50	44.25	NA***	NA	46	44.27	15.0	13.0
		L 44	46.33	11.6	12.0				
6	10.0	R 51	44.97	NA***	NA	51	46.37	15.5	13.0
		L 57	47.00	11.8	11.8				
7**	2.4	R 63	43.63	NA***	NA	62	50.23	16.7	13.0
		L 58	47.67	NA***	NA				
8	7.0	R 69	49.63	12.5	20.0*	64	44.50	15.0	13.0
		L 64	44.00	NA***	NA				
9	3.6	R 79	36.67	9.2	30.1*	79	45.87	15.3	13.0
		L 70	43.33	NA***	NA				
10	8.5	R 80	45.33	NA***	NA	82	44.30	15.0	13.0
		L 84	44.00	11.0	1.5				
11	8.2	R 85	45.67	NA***	NA	88	46.73	15.8	13.0
		L 91	47.53	NA***	NA				
12	7.5	R 92	40.33	10.1	1.5	95	44.00	15.0	13.0
		L 96	42.20	NA***	NA				
13	2.5	R 97	44.63	NA***	NA	107	44.50	15.0	13.0
		L 107	44.50	11.2	2.6				
14	1.1	R 117	45.67	11.5	20.3*	117	45.67	15.2	13.0
		L 108	35.33	8.9	27.1*				
15	2.3	R 118	44.00	NA***	NA	118	44.60	15.0	13.0
		L 130	45.50	NA***	NA				
16	7.0	R 136	44.67	11.2	8.5*	135	44.77	15.0	13.0
		L 131	45.40	NA***	12.6*				

Bldg #	Front Provided ^A	Side Yard Setback				Rear Yard Setback			
		Controlling Lot #****	Bldg height at Side	Required	Provided ^A	Controlling Lot #	Bldg height at Rear	Required	Provided ^A
17	7.0	R 143	53.00	13.3	6.3	142	46.67	15.6	13.0
		L 148	44.50	NA***	NA				
18	7.0	R 155	53.00	13.3	6.3	151	44.63	15.0	13.0
		L 160	42.67	NA***	NA				
19	6.0	R 166	53.00	13.3	6.3	164	46.43	15.5	13.0
		L 161	46.80	NA***	NA				
20	8.6	R 178	48.00	12.0	10.6	177	44.50	15.0	13.0
		L 173	44.50	NA***	NA				
21	7.2	R 187	40.00	10.0	2.6	186, 187	44.50	15.0	13.5
		L 179	42.00	NA***	NA				
22	13.0	R 195	41.40	NA***	NA	191	44.60	15.0	13.5
		L 188	39.80	10.0	2.6				
23	10.0	R 201	45.35	11.4	2.6	201	48.80	15.6	13.0
		L 196	46.80	NA***	NA				
24**	4.5	R 207	49.60	12.4	3.5	204, 205	51.50	17.2	3.5
		L 202	50.50	NA***	NA				
25	9.5	R 210	44.00	11.0	2.6	209	46.70	15.6	13.0
		L 208	44.10	11.1	2.6				
26	10.5	R 218	42.80	NA***	NA	217	44.40	15.0	9.1
		L 211	42.50	NA***	NA				
27	9.5	R 221	45.20	11.3	2.6	219	46.70	15.8	13.0
		L 219	44.90	11.3	3.6				
28**	2.3	R 227	51.00	NA***	NA	227	51.90	17.3	3.5
		L 222	51.80	13.0	3.5				
29	4.0	R 233	44.30	NA***	NA	230	44.20	15.0	13.0
		L 228	44.60	11.2	2.6				
30	1.5	R 241	44.40	NA***	NA	234, 240	45.00	15.0	13.0
		L 234	45.00	11.3	4.0				
31	3.5	R 247	43.70	11.0	7.0	246	45.20	15.1	11.5
		L 242	45.70	NA***	NA				
32	7.0	R 251	46.00	11.5	14.7	249	45.20	15.1	13.0
		L 248	44.80	11.2	11.5				

- Notes:
- * Measured to Center of Alley or Private Street
 - ** Building Type E (LFF to highest point of roof = 48.0 feet); all other buildings Type A-D (LFF to highest point of roof = 43.0)
 - *** NA = None required, considered corner lot
 - **** Side setback direction determined from facing front of building
 - ***** Requested 15.0' No-Build easement from adjacent land owner to increase effective side or rear yard
 - ^A All setbacks shown provided in this chart have been reduced 0.5 feet from that shown in plan to allow for variance in thickness of exterior wall treatments

last updated: 9/9/2007 8:55

K:\11000-1500\1453_documents\1453A\planning\preliminary\plans\lot_tabulation2.xls

Saint Paul's College
WASHINGTON, D.C.



LAYOUT BY JIM BECKE TAB, Revised By: Quaker
K:\11000-1500\1453_documents\preliminary\1453A\02.dwg - Sep 04, 2007 AT 10:50:54 AM

MINIMUM SETBACK TABULATIONS

SEPTEMBER 10, 2007

THIS DOCUMENT IS UNCLASSIFIED EXCEPT WHERE SHOWN OTHERWISE BY THIS PAGE. THESE PLANS ARE NOT TO BE REPRODUCED OR COPIED IN ANY FORM OR BY ANY MEANS, ELECTRONIC OR MECHANICAL, INCLUDING PHOTOCOPYING, RECORDING, OR BY ANY INFORMATION STORAGE AND RETRIEVAL SYSTEM.



LESSARD GROUP INC.
8511 Leeburg Pike, Ste. 700
Vienna, VA 22182
P: 703.906.8144
F: 703.260.8018
www.lessardgroup.com



VIFA, INC.
30511 Gateway Blvd.
Greenwood, MD 20614
P: 301.684.4101
F: 301.674.3311
www.vifa.com



STUDIO 39
4434 Divisadero Dr., Ste. 100-A
Accordeo, VA 22018
P: 703.218.6200
F: 703.218.6203
www.studio39.com

1453A



C-37

SHEET 40

SHEET 39

SHEET 41

SHEET 43

SHEET 42



CALL "MISS UTILITY" AT
1-800-257-7777
48 Hours Before Start of Construction

Saint Paul's College
WASHINGTON, D.C.

OVERALL THEORETICAL SUBDIVISION PLAN



LAYOUT: 36, THEORETICAL SUBDIVISION - 13117, Plotted By: Gustaf
K:\000-1500\1453\year\summary\1453100.dwg - Sep 04, 2007 AT 10:49:37 AM

SEPTEMBER 10, 2007

OWNER: SAINT PAUL'S COLLEGE, 13117 LINCOLN ROAD, WASHINGTON, DC 20004
DESIGNER: LESSARD GROUP INC., 8221 LINCOLN PARK, WASHINGTON, DC 20018
DATE: 09/10/07



LESSARD GROUP INC.
8221 LINCOLN PARK, WASH. DC 20018
TEL: 202.262.8944
FAX: 202.262.8939
www.lessardgroup.com



VICA, INC.
20221 CANTON ROAD
DUMFRIES, VA 22024
TEL: 703.218.4100
FAX: 703.218.4243
www.vica.com

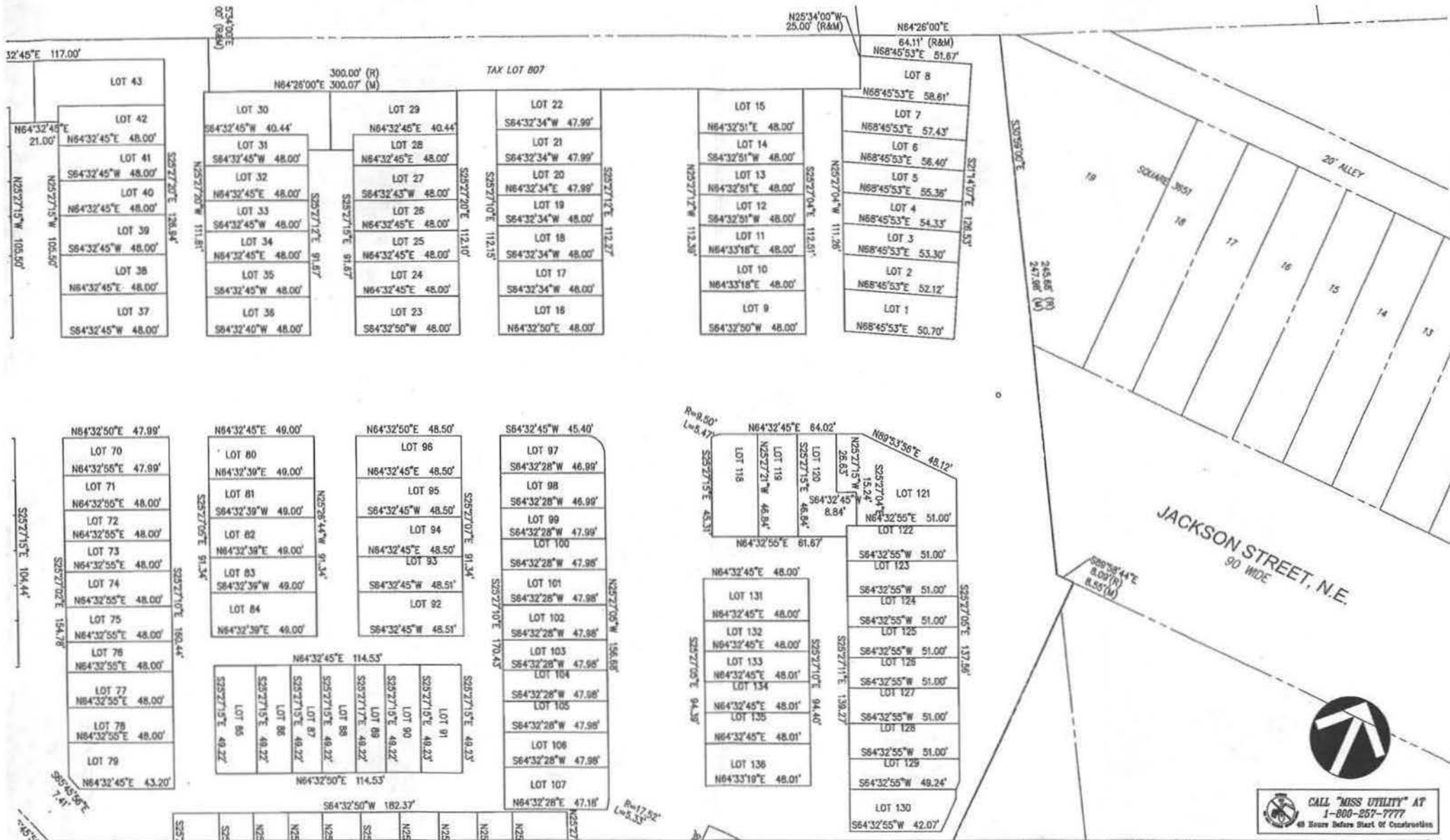


STUDIO 39
8415 CRENSHAW BL. STE. 100-A
ALEXANDRIA, VA 22310
TEL: 703.218.4800
FAX: 703.218.6203
www.studio39.com

1453A



C-38



CALL "MISS UTILITY" AT
1-800-257-7777
48 Hours Before Start of Construction

Saint Paul's College
WASHINGTON, D.C.

THEORETICAL SUBDIVISION PLAN

SEPTEMBER 10, 2007



LAYOUT 39, THEORETICAL SUBDIVISION - 13177, Plotted By: Geller
N:\1000-1350\143\yod\g\m\theory\453150.dwg - Sep. 04, 2007 AT 10:21:41 AM

WEIGHT GROUP INC. 8231 LINDSEY PKW. #100
MONTGOMERY, MD 20886
P: 301.763.3344
F: 301.763.3344
WWW.WEIGHTGROUP.COM

LESSARD GROUP INC.
8231 LINDSEY PKW. #100
MONTGOMERY, MD 20886
P: 301.763.3344
F: 301.763.3344
WWW.LESSARDGROUP.COM

VIFA, INC.
2021 Century Blvd.
Baltimore, MD 21286
P: 410.815.4400
F: 410.815.2883
WWW.VIFA.COM

STUDIO 39
8410 Greenleaf Dr. Ste. 100-A
Arlington, VA 22201
P: 703.715.6900
F: 703.716.8002
WWW.STUDIO39.COM



C-39




CALL "MISS UTILITY" AT
1-800-257-7777
 48 Hours Before Start of Construction



Saint Paul's College
 WASHINGTON, D.C.

THEORETICAL SUBDIVISION PLAN

SEPTEMBER 10, 2007



LAYOUT 41, THEORETICAL SUBDIVISION - 11217, Plotted By: Quirk
 01/15/08 - 15:00/1453/psd/psdinary/1453150.dwg -- Thu, 06, 2007 AT 10:38:12 AM

©2007 LANSARD GROUP INC. ALL RIGHTS RESERVED. THIS DOCUMENT IS THE PROPERTY OF LANSARD GROUP INC. AND IS NOT TO BE REPRODUCED OR TRANSMITTED IN ANY FORM OR BY ANY MEANS, ELECTRONIC OR MECHANICAL, INCLUDING PHOTOCOPYING, RECORDING, OR BY ANY INFORMATION STORAGE AND RETRIEVAL SYSTEM.

LANSARD GROUP INC.
 8911 Lambury Pike, Ste. 700
 Vienna, VA 22186
 P 703.860.6349
 F 703.860.6758
 www.lansardgroup.com

VIFA, INC.
 20231 Century Blvd.
 Quantico, VA 22094
 P 703.718.6200
 F 703.718.6202
 www.vifa.com

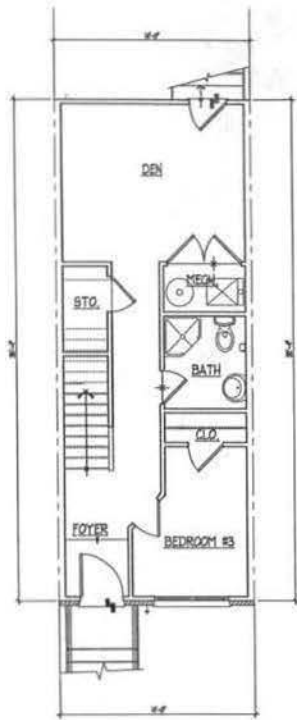
STUDIO 39
 6455 Grandview Dr., Box 100-A
 Alexandria, VA 22310
 P 703.718.6200
 F 703.718.6202
 www.studio39.com

1453A

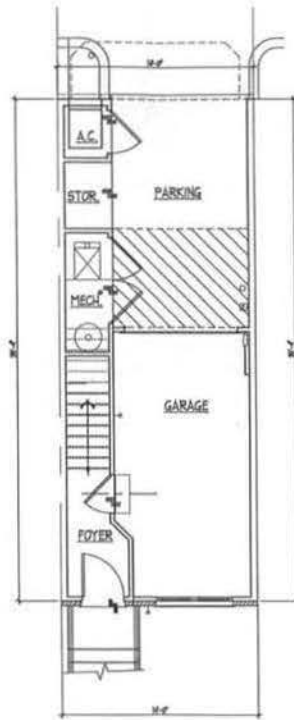


1"=40'

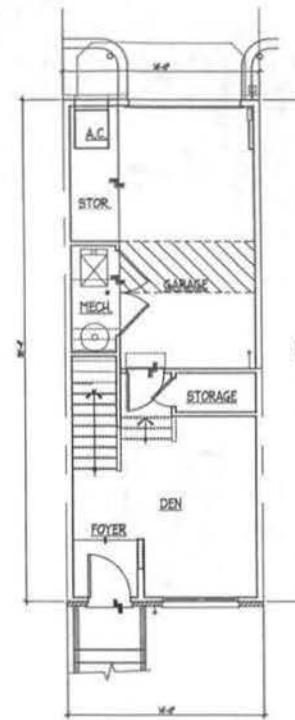
C-41



3
A-01
Ground Floor Plan (A-1)
SCALE
E14146A-01



2
A-01
Opt. Ground Floor Plan
SCALE
E14146A-01



1
A-01
Ground Floor Plan
SCALE
E14146A-01

Saint Paul's College
WASHINGTON, D.C.



UNIT TYPE 'A'

FLOORPLANS

SEPTEMBER 10, 2007



LESSARD GROUP INC.
8121 Lenthury Pike, Ste. 700
Vienna, VA 22182
P: 703.719.9194
F: 703.719.9339
www.lessardgroup.com



VVA, INC.
20211 Embassy Blvd
Germantown, MD 20874
P: 301.658.4100
F: 301.658.2362
www.vva.com

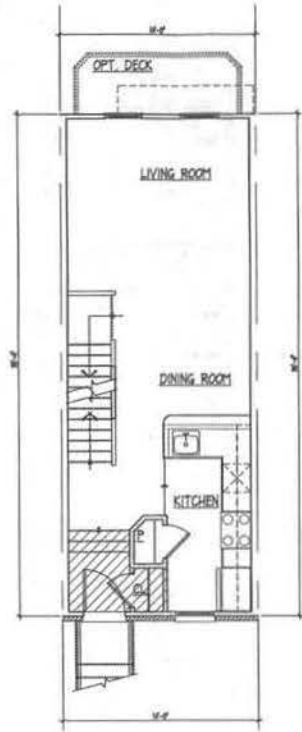


STUDIO 39
6418 Greenfield Cr., Ste. 100-A
Arlington, VA 22210
P: 703.719.8200
F: 703.719.4003
www.studio39.com

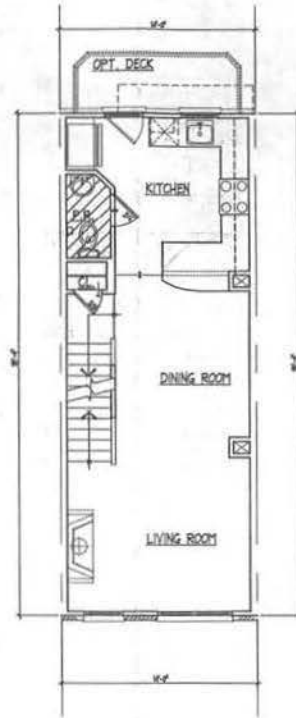
EYA-146a.00



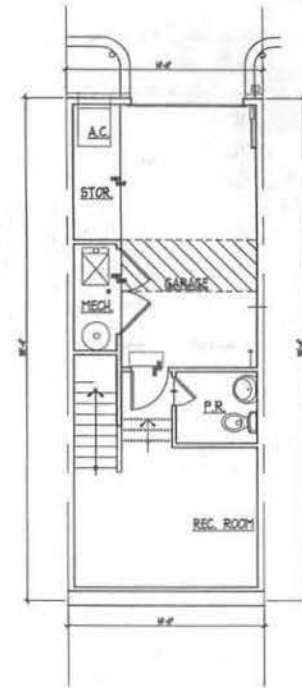
A-01



1 Second Floor Plan (EB)
SCALE: 1/8" = 1'-0"
EY146AA-02



2 Second Floor Plan
SCALE: 1/8" = 1'-0"
EY146AA-02



1 Alt. Ground Floor Plan (EB)
SCALE: 1/8" = 1'-0"
EY146AA-02

Saint Paul's College
WASHINGTON, D.C.



UNIT TYPE 'A'
FLOORPLANS

SEPTEMBER 10, 2007



LESSARD GROUP INC.
8323 Leesburg Pike, Ste. 700
Vienna, VA 22182
P: 703.260.8294
F: 703.260.8228
www.lessardgroup.com



VIKA INC.
20211 Century Blvd.
Germantown, MD 20874
P: 301.314.4100
F: 301.314.2181
www.vika.com

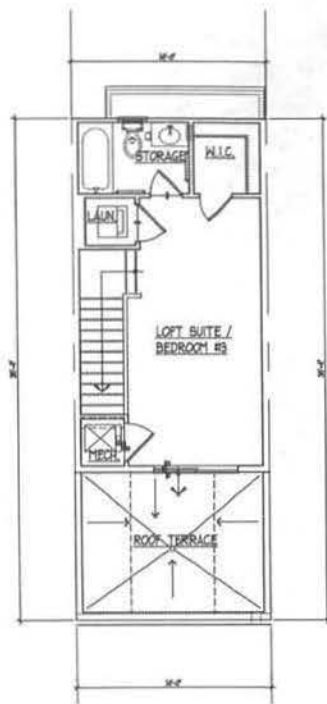


STUDIO 3B
6148 Connelley Dr., Ste. 100A
Alexandria, VA 22310
P: 703.715.8000
F: 703.715.8001
www.studio3b.com

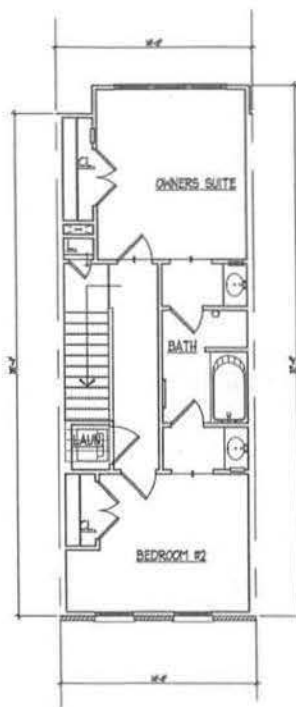
EYA.146a.00



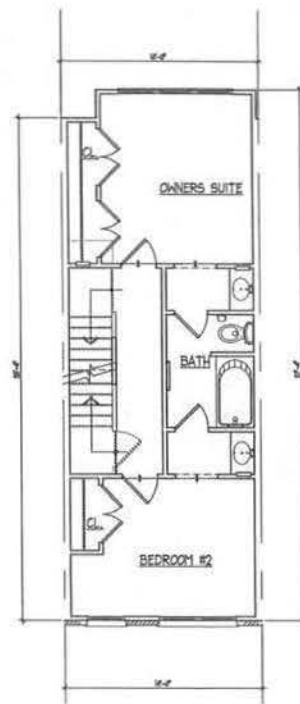
A-02



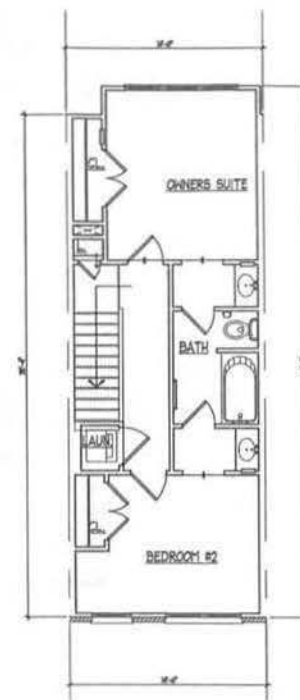
1 Opt. Loft Floor Plan
SCALE: 1/8"=1'-0"



3 Third Floor Plan (EB)
SCALE: 1/8"=1'-0"



2 Opt. Third Floor Plan
SCALE: 1/8"=1'-0"



4 Third Floor Plan
SCALE: 1/8"=1'-0"

Saint Paul's College
WASHINGTON, D.C.



UNIT TYPE 'A'

FLOORPLANS

SEPTEMBER 10, 2007



LESSARD GROUP INC.
8221 Lindbergh Plaza, Ste. 700
Norfolk, VA 23502
P: 757.762.8344
F: 757.762.8338
www.LessardGroup.com



VVA, INC.
2074 Century Blvd.
Chesapeake, VA 23041
P: 757.438.4100
F: 757.438.4102
www.VVA.com



STUDIO 39
9435 Greenbelt Dr., Ste. 300-A
Alexandria, VA 22304
P: 703.778.6300
F: 703.778.6302

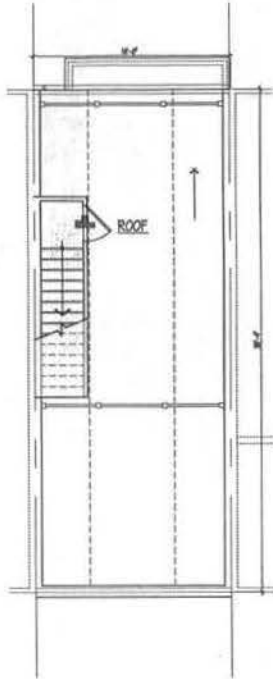
EYA 146a.00



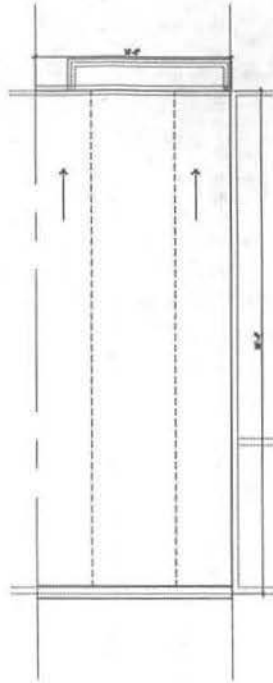
N.T.S.

EYA146a-03

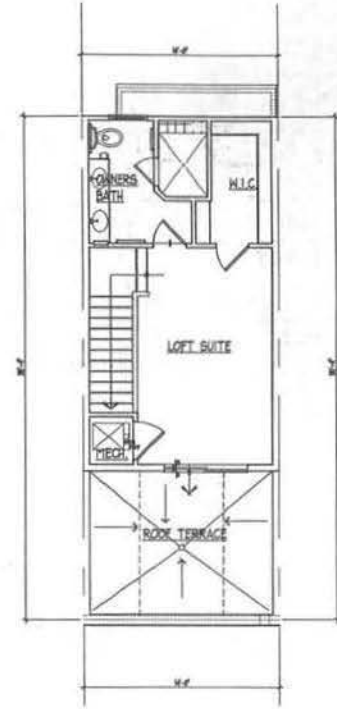
A-03



3
A-04
Opt Roof Plan
SCALE
EY1164a-01



2
A-04
Roof Plan
SCALE
EY1164a-01



1
A-04
Loft Floor Plan -1
SCALE
EY1164a-01

Saint Paul's College
WASHINGTON, D.C.



UNIT TYPE 'A'

FLOORPLANS

SEPTEMBER 10, 2007



LESSARD GROUP INC.
8521 Lumbury Pk. Sw. 750
Dorva, VA 22022
T: 703.766.3244
F: 703.762.8222
www.lessardgroup.com



VIXA, INC.
20251 Century Blvd.
Centreville, VA 20109
P: 703.835.1100
F: 703.835.1262
www.vixa.com

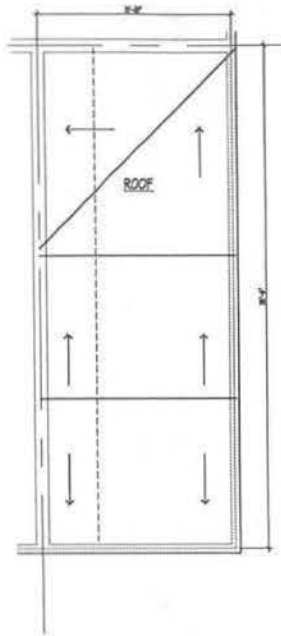


STUDIO 39
8418 Glenridge Dr. Ste. 100-A
Atlanta, VA 30328
P: 770.719.8000
F: 770.719.8023
www.studio39.com

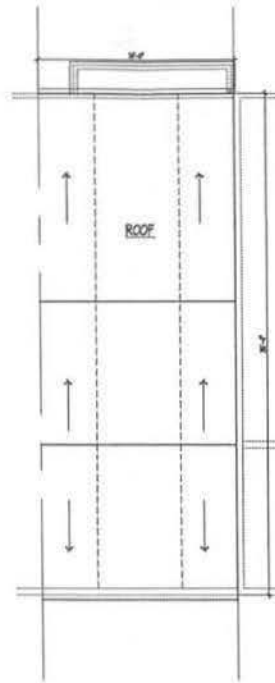
EYA-146a-00



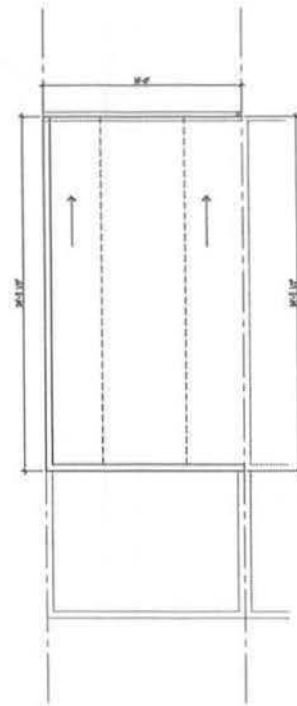
A-04



3
A-05
Roof Plan Elev. #5 @ End
SCALE: 1/8"=1'-0"



2
A-05
Roof Plan Elev. #5
SCALE: 1/8"=1'-0"



1
A-05
Opt. Roof Plan w/ Loft
SCALE: 1/8"=1'-0"

Saint Paul's College
WASHINGTON, D.C.



UNIT TYPE 'A'
FLOORPLANS

SEPTEMBER 10, 2007



LESSARD GROUP INC.
8821 Landings Place, Ste. 700
Manassas, VA 22110
P: 703.790.8344
F: 703.790.8338
www.lessardgroup.com



VIKI, INC.
20321 Century Blvd.
Dumfriessville, MD 20744
P: 202.211.8000
F: 202.211.8001
www.viki.com



STUDIO 39
9416 Greenleaf Ct., Ste. 100-A
Alexandria, VA 22304
P: 703.711.8000
F: 703.711.8001
www.studio39.com

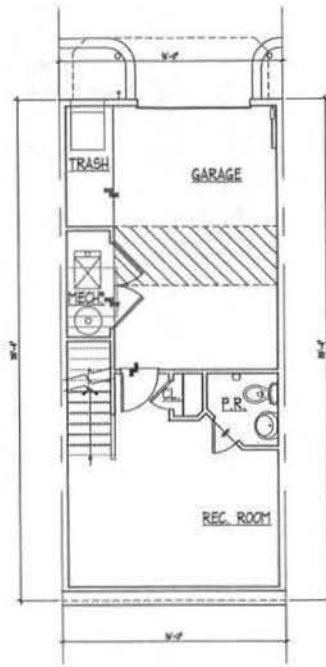
EYA.146a.00



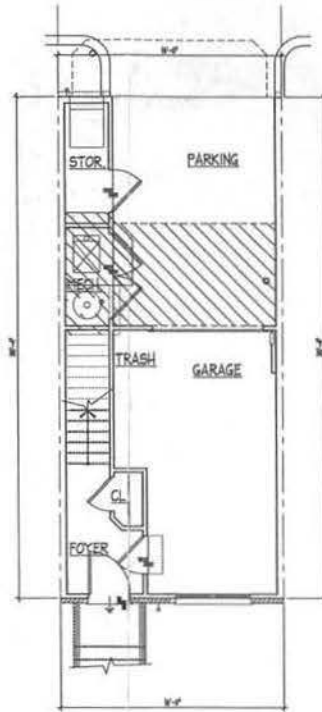
N.T.S.

EYA146a-05

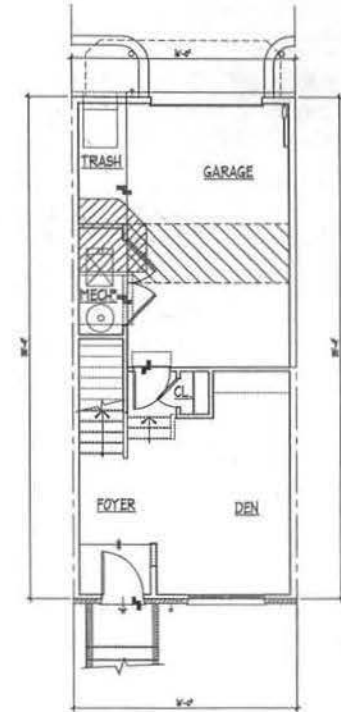
A-05



1
A-10 SCALE: 1/8" = 1'-0" EY1104a.00



1
A-10 SCALE: 1/8" = 1'-0" EY1104a.00



1
A-10 SCALE: 1/8" = 1'-0" EY1104a.00

Saint Paul's College
WASHINGTON, D.C.



UNIT TYPE 'B'
FLOORPLANS

SEPTEMBER 10, 2007



LESSARD GROUP INC.
8311 Leesburg Pike, Ste. 200
Vienna, VA 22183
P: 703.908.8194
F: 703.908.8128
www.lessardgroup.com



VIKA, INC.
2020 Century Blvd.
Glenmont, MD 20874
P: 301.924.4700
F: 301.924.2902
www.vika.com

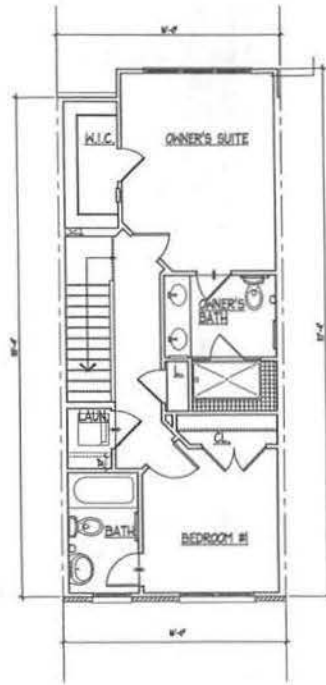


STUDIO 39
6144 Greenleaf Ct., Ste. 100-A
Arlington, VA 22210
P: 703.718.8000
F: 703.718.8800
www.studio39.com

EYA.146a.00



A-10



3 Third Floor Plan
A-11 SCALE 1/8"=1'-0"



2 Second Floor Plan (EB)
A-11 SCALE 1/8"=1'-0"



1 Second Floor Plan (STD)
A-11 SCALE 1/8"=1'-0"

Saint Paul's College
WASHINGTON, D.C.



UNIT TYPE 'B'
FLOORPLANS
SEPTEMBER 10, 2007



LESSARD GROUP INC.
8022 Leesburg Pike, Ste. 100
Vienna, VA 22182
P: 703.760.6294
F: 703.760.6228
www.lessardgroup.com



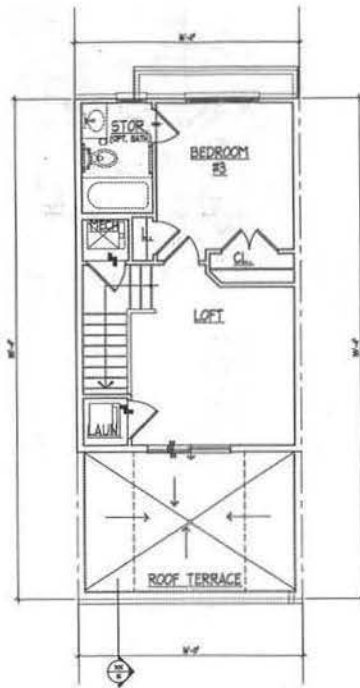
VIKA, INC.
3051 Centreville Blvd.
Chantilly, VA 20151
P: 571.614.4200
F: 571.614.2382
www.vika.com



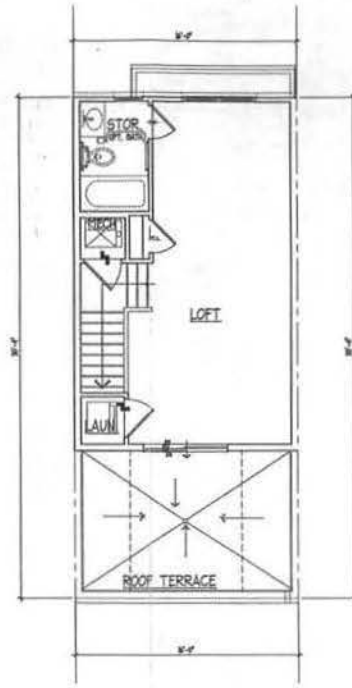
STUDIO 3P
8416 Greenway Dr., Ste. 101A
Alexandria, VA 22304
P: 703.715.6000
F: 703.715.6000
www.studio3p.com

EYA.146a.00

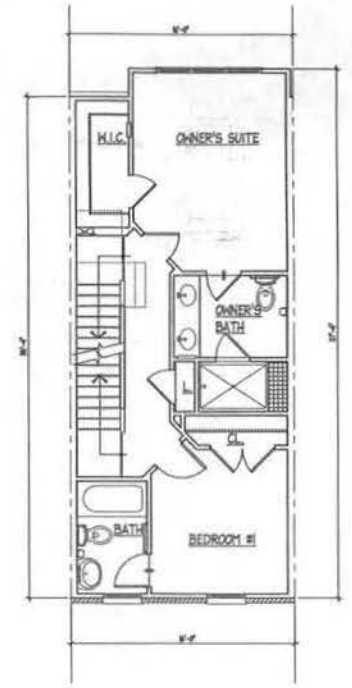




3 Opt. Loft Plan
SCALE: 1/8" = 1'-0"
EY146A-12



2 Loft Floor Plan
SCALE: 1/8" = 1'-0"
EY146A-12



1 Third Floor Plan (EB)
SCALE: 1/8" = 1'-0"
EY146A-12

Saint Paul's College
WASHINGTON, D.C.



UNIT TYPE 'B'

FLOORPLANS

SEPTEMBER 10, 2007



LESSARD GROUP INC.
8521 Lenthury Pike, Ste. 101
Vienna, VA 22122
P: 703.760.5344
F: 703.761.8728
www.lessardgroup.com



VIKA, INC.
20251 Century Blvd.
Cranston, RI 02914
P: 401.914.4300
F: 401.914.2462
www.vika.com



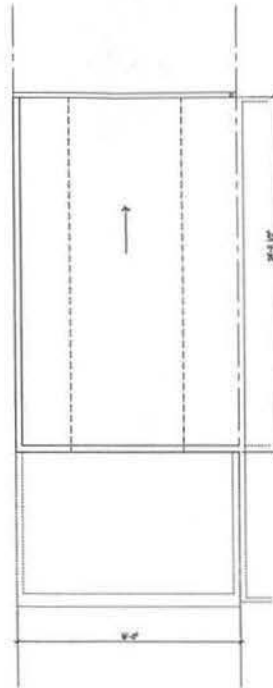
STUDIO 39
8418 Greenidge Dr. Ste. 100-A
Alexandria, VA 22304
P: 703.778.8700
F: 703.778.8200
www.studio39.com

EYA.146a.00

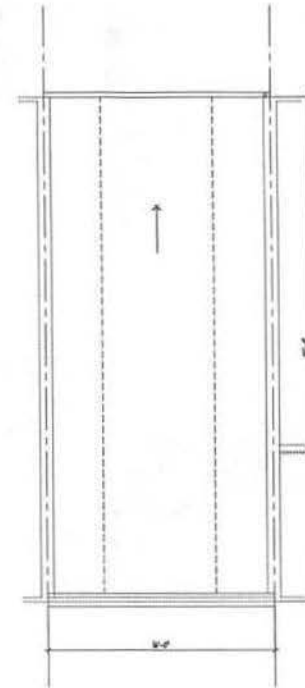




3
A-13
Opt Roof Plan w/ Roof Terrace
SCALE: EY146a-13



3
A-13
Opt Roof Plan
SCALE: EY146a-13



2
A-13
Roof Plan
SCALE: EY146a-13

Saint Paul's College
WASHINGTON, D.C.

THE NEIGHBORHOODS OF
EYA

UNIT TYPE 'B'
ROOF PLANS
SEPTEMBER 10, 2007

LESSARD GROUP INC.
8821 Leeburg Pike, Ste. 700
Manassas, VA 22120
P: 703.760.0344
F: 703.760.0348
www.lessardgroup.com

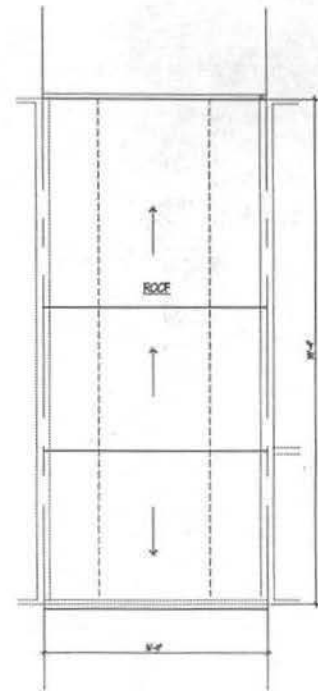
YDKA, INC.
20254 Century Blvd.
Silver Spring, MD 20904
P: 301.218.4300
F: 301.218.2062
www.ydka.com

STUDIO 39
6415 Greenbelt Dr. Ste. 100-A
Silver Spring, MD 22158
P: 301.713.0000
F: 301.713.0000
www.studio39.com

EYA.146a.00

N.T.S.
EY146a-13

A-13



Opt Roof Plan @ Elev. #5
 A-14 SCALE EYA14a-04

Saint Paul's College
 WASHINGTON, D.C.



UNIT TYPE 'B'
 ROOF PLANS

SEPTEMBER 10, 2007



LESSARD GROUP INC.
 8531 Leesburg Pike, Ste. 200
 Vienna, VA 22182
 P: 703.960.8300
 F: 703.960.8100
 www.lessardgroup.com



VEGA, INC.
 2021 Century Blvd.
 Germantown, MD 20874
 P: 301.946.4100
 F: 301.946.2367
 www.vega.com

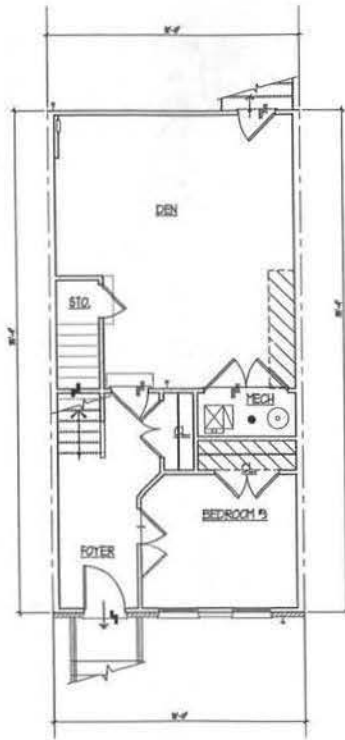


STUDIO 3P
 8416 Greenbelt Dr. Ste. 100 A
 Alexandria, VA 22304
 P: 703.713.8000
 F: 703.713.8007
 www.studio3p.com

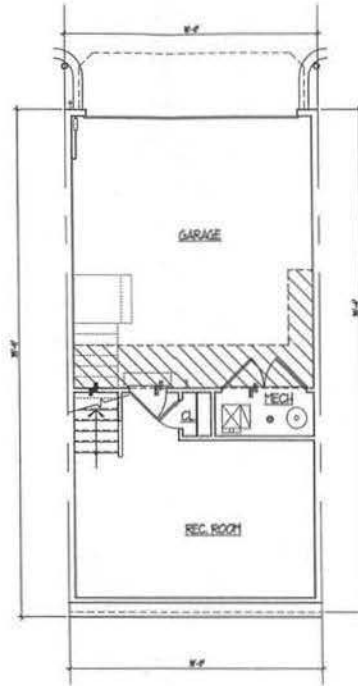
EYA.145a.00



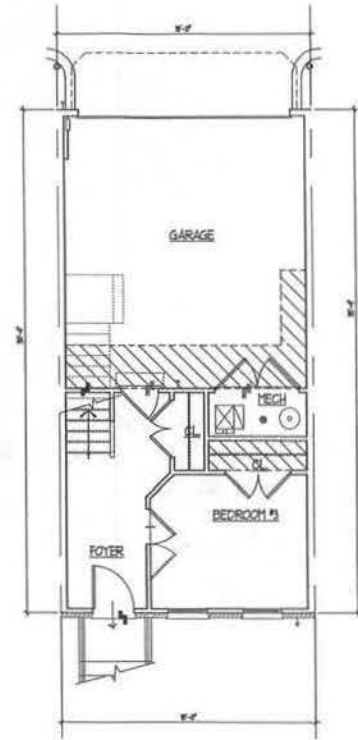
N.T.S. EYA14a-04



1 Ground Floor Plan (C-1)
SCALE: 1/8" = 1'-0"
EYAK6A-01



2 Ground Floor Plan (EB)
SCALE: 1/8" = 1'-0"
EYAK6A-02



1 Ground Floor Plan
SCALE: 1/8" = 1'-0"
EYAK6A-03

Saint Paul's College
WASHINGTON, D.C.



UNIT TYPE 'C'
FLOORPLANS
SEPTEMBER 10, 2007



LESSARD GROUP INC.
1811 Landings Plaza, Ste. 700
York, VA 22441
P: 703.260.0348
F: 703.260.8108
www.LessardGroup.com



VIKA, INC.
2051 Century Blvd.
Germantown, VA 22044
P: 703.938.4300
F: 703.938.2262

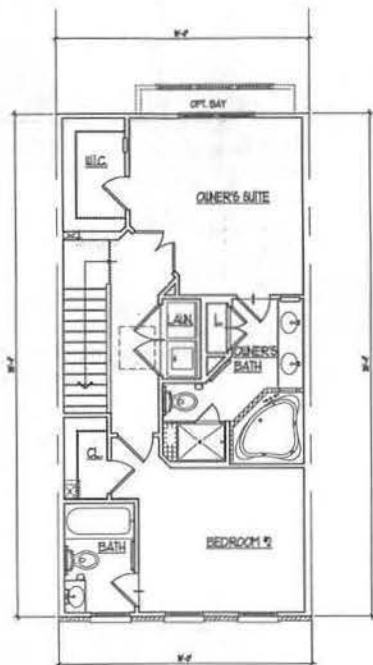


STUDIO 39
8418 Greenway Dr. Ste. 100A
Alexandria, VA 22304
P: 703.712.8900
F: 703.712.8000

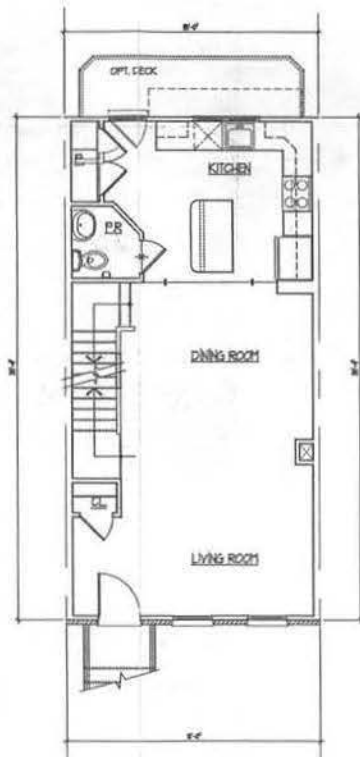
EYA.146a.00



A-20



3 Third Floor Plan
A-21 SCALE: 1/8"=1'-0" DRAWING NO. 271166A-21



2 Second Floor Plan (EB)
A-21 SCALE: 1/8"=1'-0" DRAWING NO. 271166A-21



1 Second Floor Plan
A-21 SCALE: 1/8"=1'-0" DRAWING NO. 271166A-21

Saint Paul's College
WASHINGTON, D.C.



UNIT TYPE 'C'
FLOOR PLANS

SEPTEMBER 10, 2007

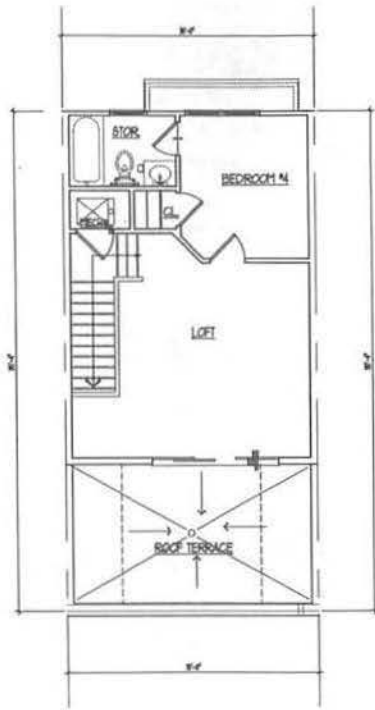
LESSARD GROUP INC.
8521 Leesbury Pl. #4, 707
Vienna, VA 22182
P: 703.760.5244
F: 703.260.8128
www.lessardgroup.com

VIVA, INC.
2031 Century Blvd.
Germantown, MD 20874
P: 301.918.1100
F: 301.918.2482
www.vivainc.com

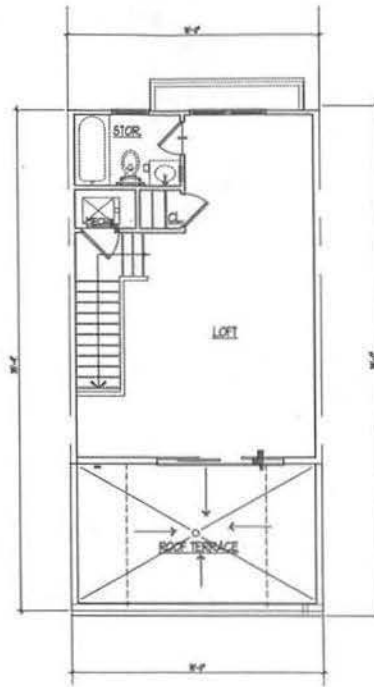
STUDIO 39
1418 Greenbelt Dr. Ste. 100-A
Alexandria, VA 22304
P: 703.773.6000
F: 703.773.6800
www.studio39.com

EYA.145a.00

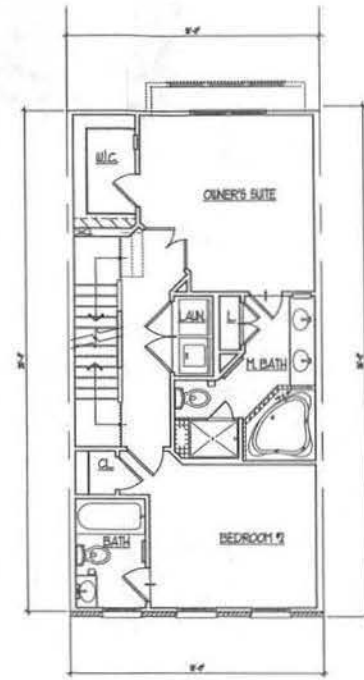




3 Opt. Loft Floor Plan
SCALE: 1/8"=1'-0"
EY146a.02



2 Loft Floor Plan
SCALE: 1/8"=1'-0"
EY146a.02



1 Opt. Third Floor Plan
SCALE: 1/8"=1'-0"
EY146a.02

Saint Paul's College
WASHINGTON, D.C.



UNIT TYPE 'C'

FLOOR PLANS

SEPTEMBER 10, 2007



LESSARD GROUP INC.
8211 Springburg Pike, Ste. 700
Vienna, VA 22182
P: 703.768.8344
F: 703.768.8328
www.lessardgroup.com



VICA, INC.
20211 Century Blvd.
Cameron Station, VA 22041
P: 703.518.4100
F: 703.518.2382

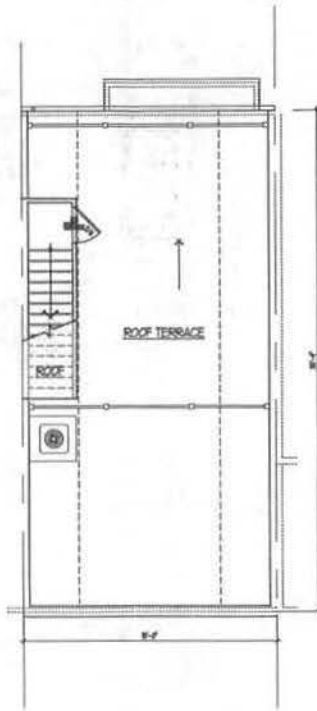


STUDIO 39
3418 Greenbush Dr., Ste. 100-A
Alexandria, VA 22304
P: 703.738.8300
F: 703.738.0500

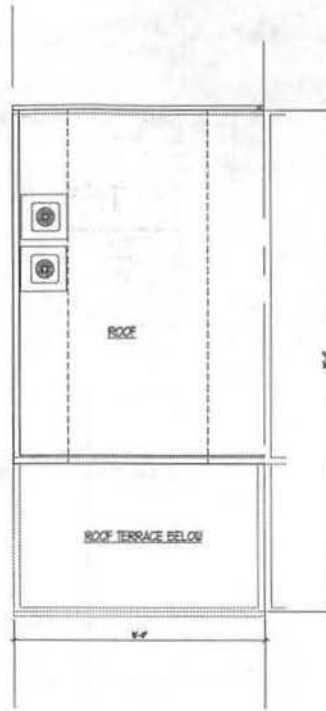
EYA.146a.00



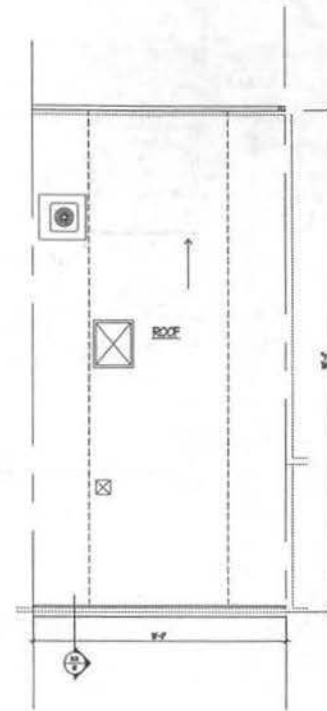
N.T.S. EY146a.02



3 Roof Plan w/ Roof Terrace
SCALE: 1/8"=1'-0"
EYK146A-23



2 Opt. Roof Plan
SCALE: 1/8"=1'-0"
EYK146A-23



1 Roof Plan
SCALE: 1/8"=1'-0"
EYK146A-23

Saint Paul's College
WASHINGTON, D.C.



UNIT TYPE 'C'

FLOOR PLANS

SEPTEMBER 10, 2007



LESSARD GROUP INC.
9521 Lindbergh Plaza, Ste. 700
Vienna, VA 22186
P: 703.760.8344
F: 703.760.8338
www.lessardgroup.com



VIKI, INC.
22261 Century Blvd.
Germantown, MD 20874
P: 301.918.4300
F: 301.918.2282
www.viki.com

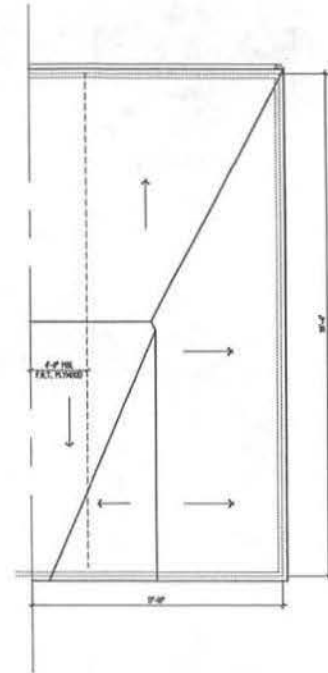


STUDIO 39
6148 Grosvenor Dr., Ste. 100A
Alexandria, VA 22304
P: 703.712.8200
F: 703.712.8003
www.studio39.com

EYA-146a.00



N.T.S. EYK146A-23



1
A-24
Roof Plan @ Elev. #5
SCALE
EVA146A-24

Saint Paul's College
WASHINGTON, D.C.



UNIT TYPE 'C'

ROOF PLANS

SEPTEMBER 10, 2007



LESSARD GROUP INC.
9321 Leesburg Pike, Ste. 700
Vienna, VA 22182
P: 703.760.8344
F: 703.760.8328
www.lessardgroup.com



VVA, INC.
20311 Century Blvd.
Greenwood, VA 20074
P: 703.718-1100
F: 703.718-1102

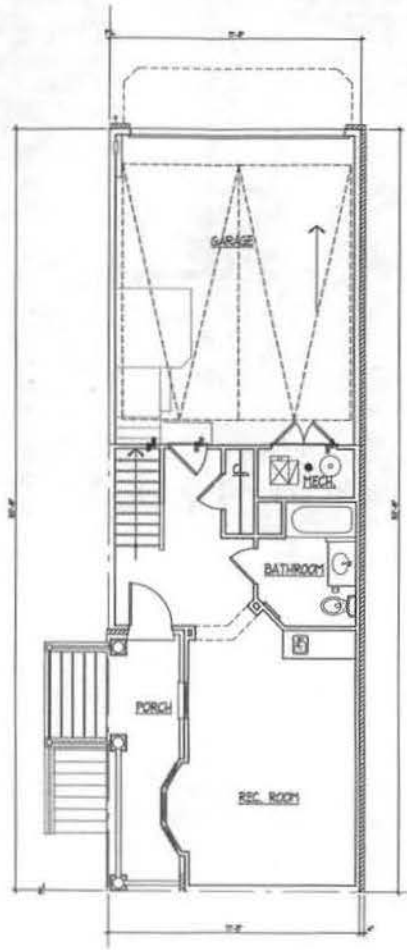


STUDIO 39
6416 Greenlawn Dr., Ste. 100-A
Alexandria, VA 22304
P: 703.718-2350
F: 703.718-2352

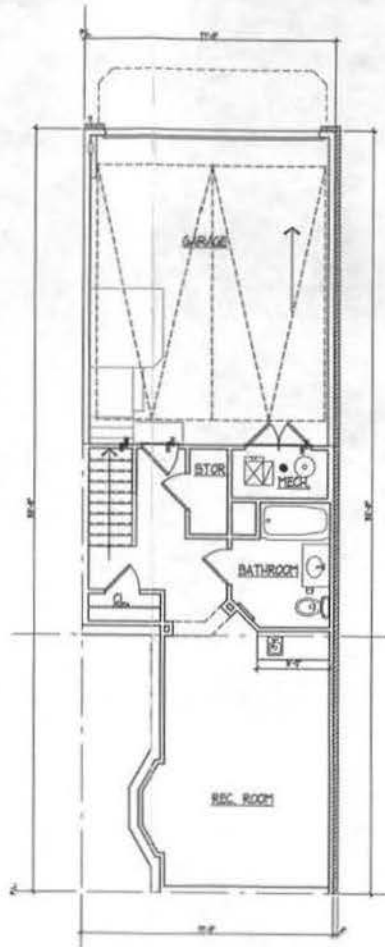
EVA:146A.00



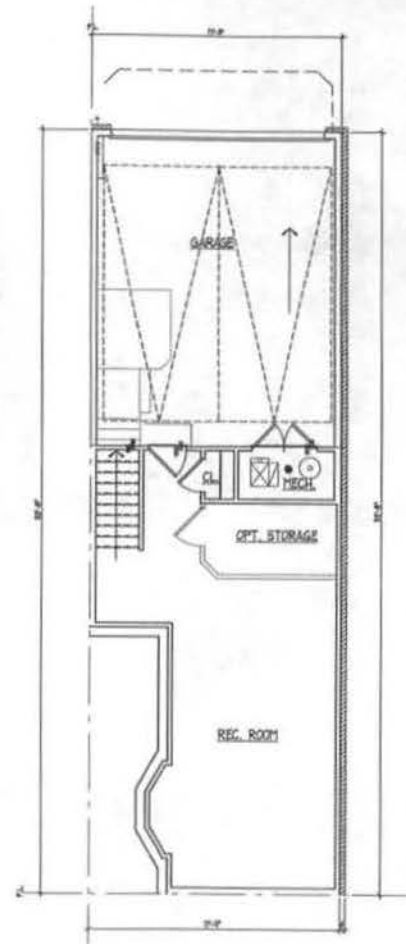
A-24



1
A/B
All Ground Floor Plan



2
A/B
Opt. Ground Floor Plan



3
A/B
Ground Floor Plan

Saint Paul's College
WASHINGTON, D.C.



UNIT TYPE 'D'
FLOOR PLANS

SEPTEMBER 10, 2007



LESSARD GROUP INC.
4021 Landover Pike, Ste. 101
Greenbelt, MD 21740
P: 301.261.8344
F: 301.461.8338
www.lessardgroup.com



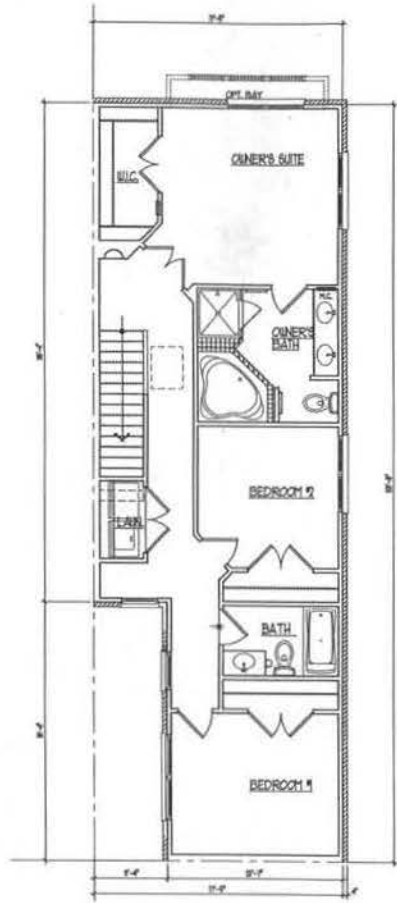
VIVA, INC.
3031 Century Blvd
Lanham, MD 20646
P: 301.514.1300
F: 301.514.1302
www.viva.com



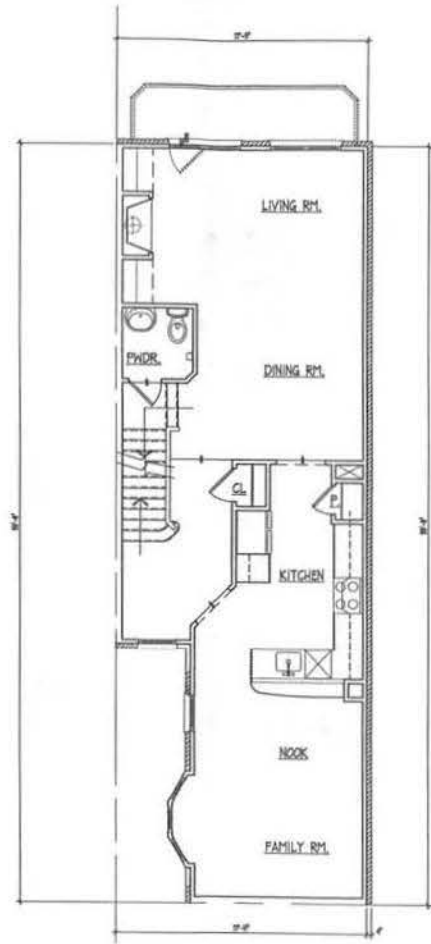
STUDIO 39
1414 Greenbelt Dr. Ste. 100-A
Alexandria, VA 22304
P: 703.776.0000
F: 703.776.0002
www.studio39.com

EYA.146a.00

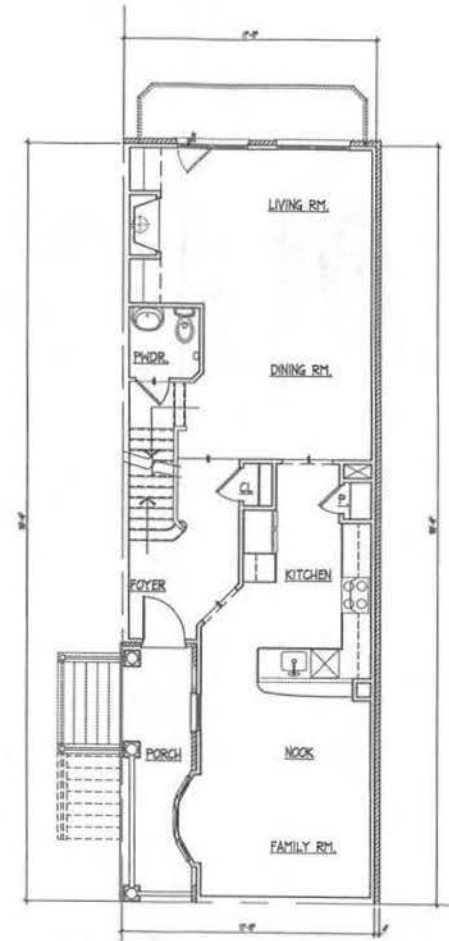




3 Third Floor Plan
A-31 SCALE EY146a-31



4 Second Floor Plan (EB)
A-31 SCALE EY146a-31



5 Second Floor Plan
A-31 SCALE EY146a-31

Saint Paul's College
WASHINGTON, D.C.



UNIT TYPE 'D'

FLOOR PLANS

SEPTEMBER 10, 2007



LESSARD GROUP INC.
1521 Loching Pike, Ste. 700
Vienna, VA 22182
P: 703.765.5166
F: 703.765.8228
www.lessardgroup.com



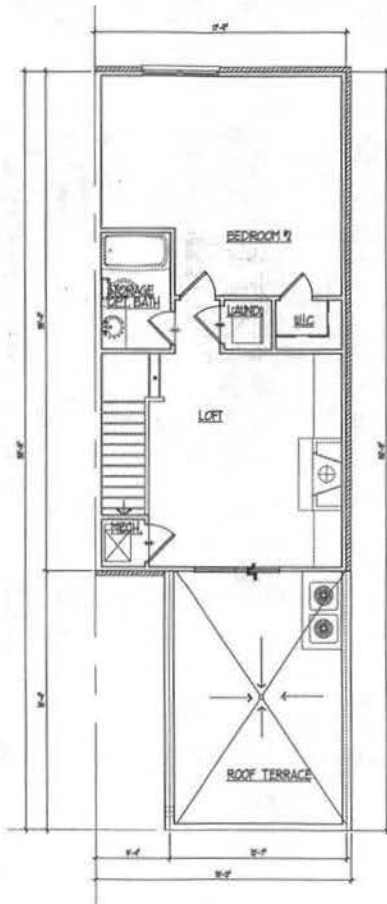
VNA, INC.
2024 Century Blvd.
Gainesville, FL 32604
P: 888.816.8166
F: 352.464.3882
www.vna.com



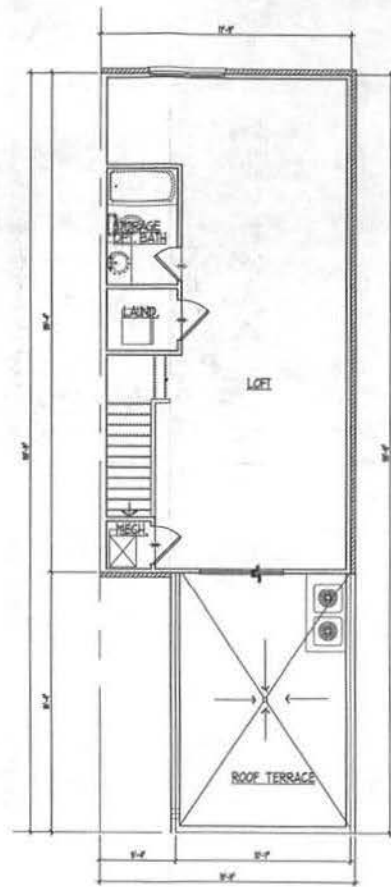
STUDIO 39
8418 Greenlee Dr., Ste. 100-A
Arlington, VA 22209
P: 703.719.8500
F: 703.719.8500
www.studio39.com

EYA.146a.00

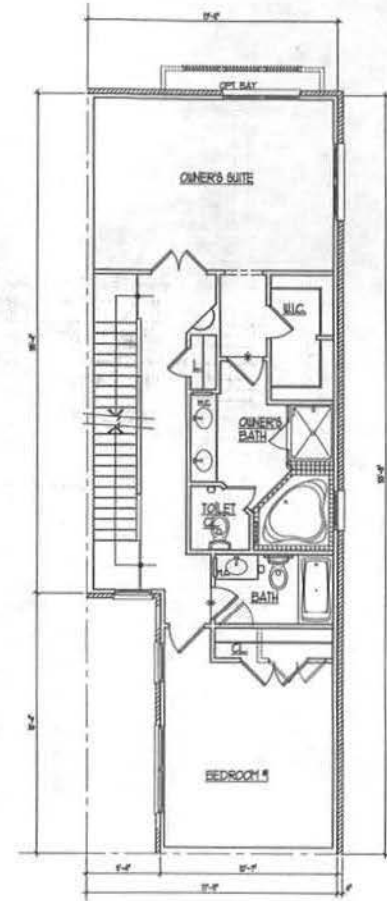




3
A-32
SCALE
E16166A-02



2
A-32
SCALE
E16166A-02



1
A-32
SCALE
E16166A-02

Saint Paul's College
WASHINGTON, D.C.

THE NEIGHBORHOODS OF
EYA

UNIT TYPE 'D'
FLOOR PLANS
SEPTEMBER 10, 2007



LESSARD GROUP INC.
8221 Leesburg Pike, Ste. 700
Vienna, VA 22182
P: 703.760.3344
F: 703.760.8158
www.lessardgroup.com



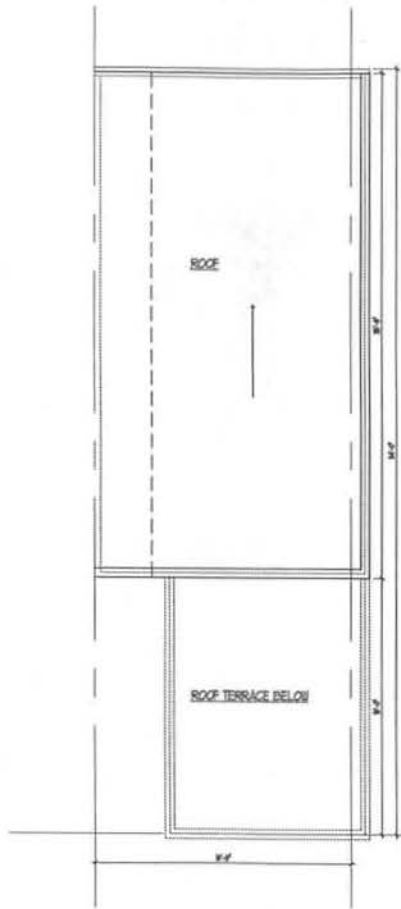
VIKI, INC.
20231 Century Blvd.
Greenwood, MD 20774
P: 301.818.1100
F: 301.818.2002
www.viki.com



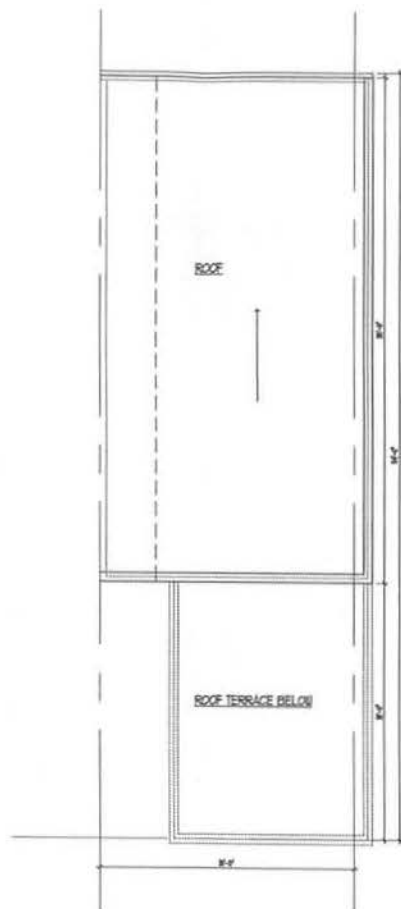
STUDIO 39
6415 Greenleaf Dr. Ste. 100-A
Arlington, VA 22209
P: 703.773.8500
F: 703.773.8559
www.studio39.com

EYA.146a.00

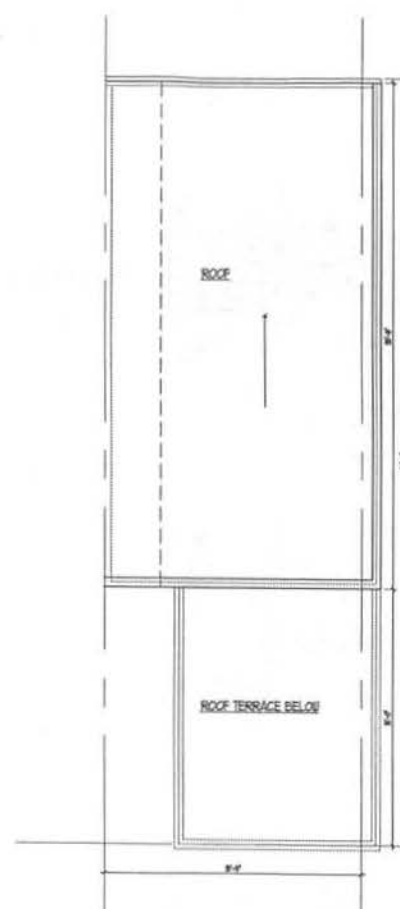
N.T.S.
E16166A-32



3
A-31
Loft Roof Plan
SCALE: 1/8"=1'-0"
EY146a.01



2
A-31
Roof Plan w/ Roof Access
SCALE: 1/8"=1'-0"
EY146a.02



1
A-31
Roof Plan Std.
SCALE: 1/8"=1'-0"
EY146a.03

Saint Paul's College
WASHINGTON, D.C.



UNIT TYPE 'D'

ROOF PLANS

SEPTEMBER 10, 2007



LESSARD GROUP INC.
8721 Leesburg Pike, Ste. 700
Vienna, VA 22184
P: 703.765.5247
F: 703.765.5208
www.lessardgroup.com



VIKAL, INC.
2021 Century Blvd.
Greenbelt, MD 20740
P: 301.418.4100
F: 301.418.2842
www.vikal.com

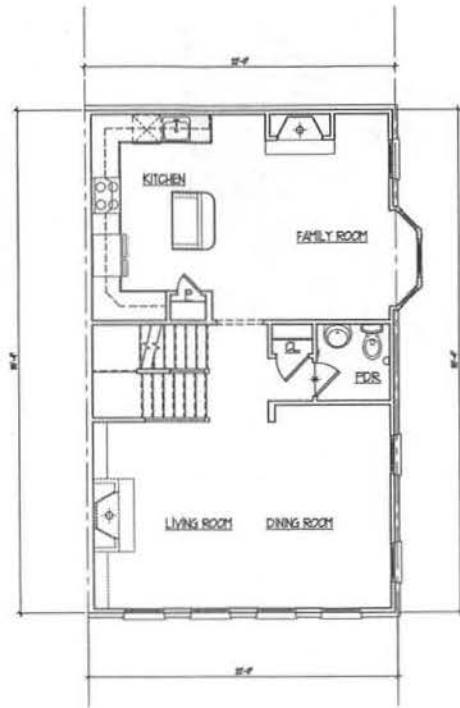


STUDIO 39
6416 Grosvenor Dr., Ste. 100-A
Alexandria, VA 22304
P: 703.718.6500
F: 703.718.6502
www.studio39.com

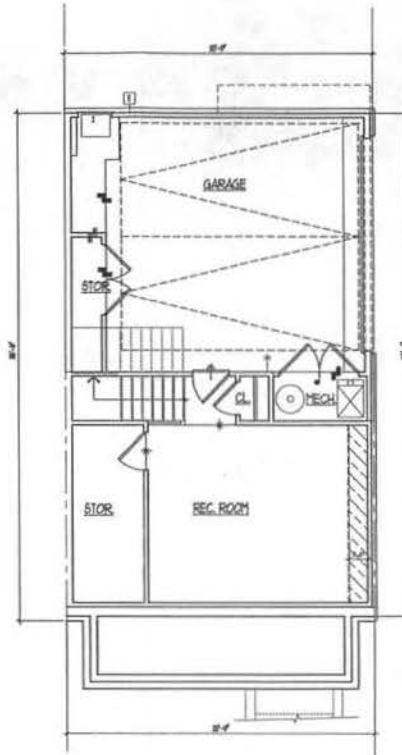
EYA-146a.00



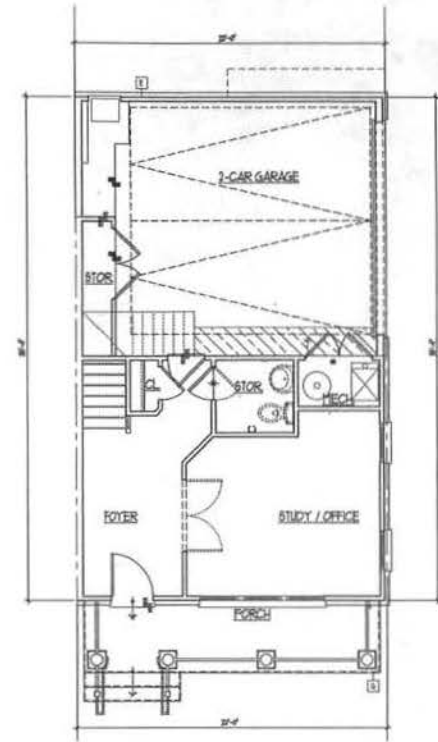
A-33



3 Second Floor Plan
SCALE: 1/4"=1'-0"



2 Ground Floor Plan (EB)
SCALE: 1/4"=1'-0"



1 Ground Floor Plan
SCALE: 1/4"=1'-0"

Saint Paul's College
WASHINGTON, D.C.

THE NEIGHBORHOODS OF
EYA

UNIT TYPE 'E'

FLOOR PLANS
SEPTEMBER 10, 2007



LESSARD GROUP INC.
8521 Leesburg Pike, Ste. 700
Vienna, VA 22186
P: 703.760.5244
F: 703.760.5258
www.lessardgroup.com



VDKA, INC.
20251 Century Blvd.
Schaumburg, MD 20784
P: 301.304.4320
F: 301.304.2262
www.vdk.com



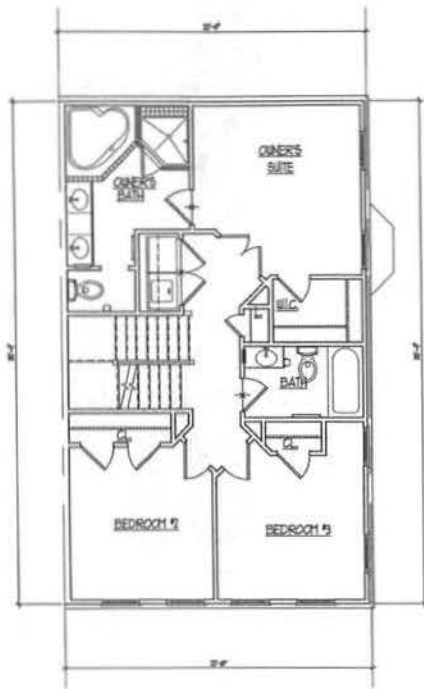
STUDIO 39
8145 Greenlawn Dr., Ste. 100-A
Arlington, VA 22204
P: 703.718.8900
F: 703.718.8901
www.studio39.com

EYA.146a.00

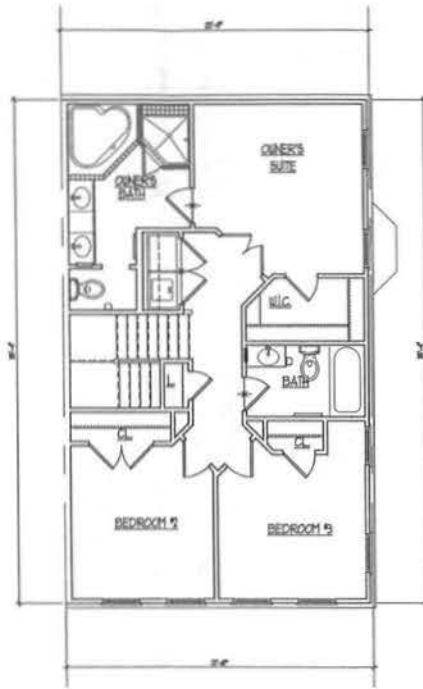
N.T.S.

EYA146A-0

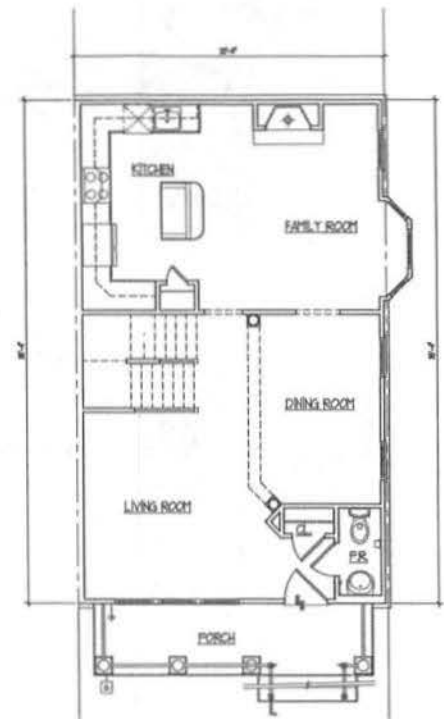
A-40



3
A-41
Opt. Third Floor Plan w/Loft
SCALE
ET/10/06/07



2
A-41
Third Floor Plan
SCALE
ET/10/06/07



1
A-41
Second Floor Plan (EB)
SCALE
ET/10/06/07

Saint Paul's College
WASHINGTON, D.C.

THE NEIGHBORHOODS OF
EYA

UNIT TYPE 'E'
FLOOR PLANS
SEPTEMBER 10, 2007

LESSARD GROUP INC.
2021 Landburg Pike, Ste. 100
Farmingdale, NY 11737
P: 781.380.8744
F: 781.380.8744
www.lesgardgroup.com

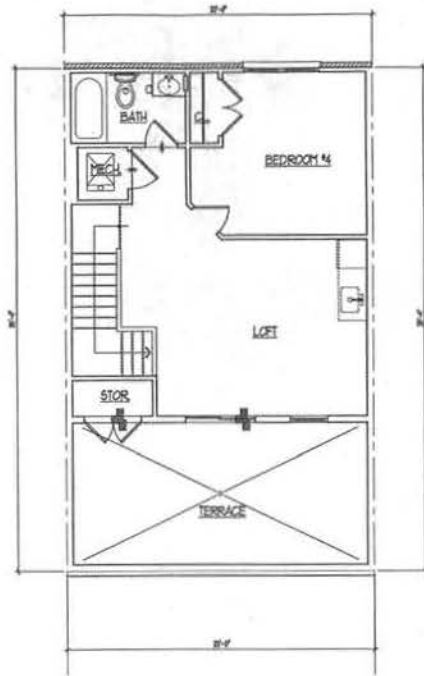
VIKA, INC.
20211 Century Blvd.
Greenwood, MD 21044
P: 301.818.1100
F: 301.818.1100
www.vika.com

STUDIO 39
8418 Greenleaf Ct., Ste. 100-A
Alexandria, VA 22304
P: 703.718.6000
F: 703.718.6000
www.studio39.com

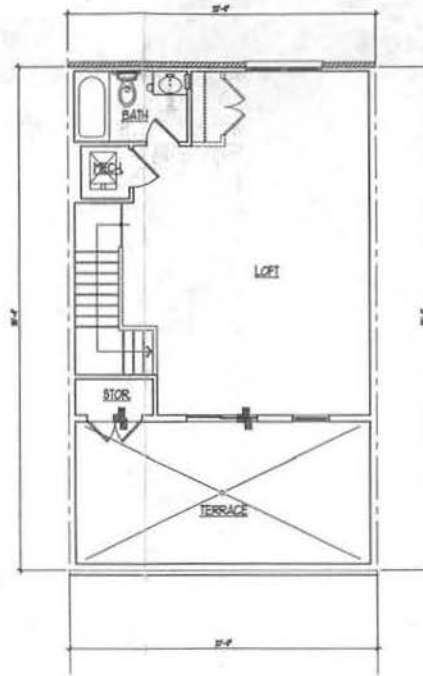
EYA-146a.00

N.T.S.
EYA146a-4c

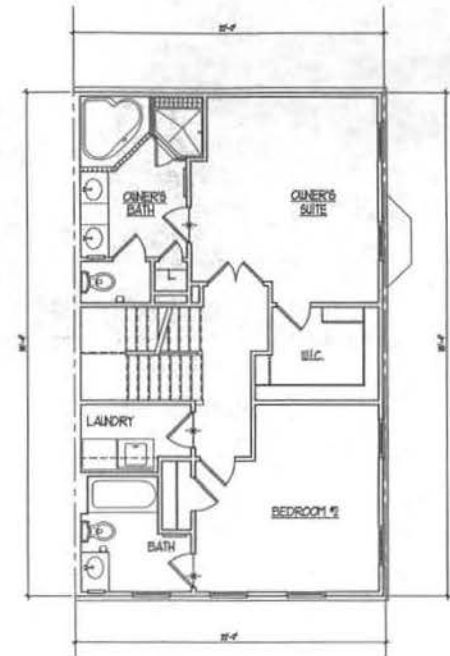
A-41



3 Opt. Loft Floor Plan w/ Bedroom #4
A-42 SCALE EY1166A-02



2 Loft Floor Plan
A-42 SCALE EY1166A-02



1 Opt. Third Floor Plan w/ Loft
A-42 SCALE EY1166A-02

Saint Paul's College
WASHINGTON, D.C.



UNIT TYPE 'E'
FLOOR PLANS

SEPTEMBER 10, 2007



LESSARD GROUP INC.
8521 Leesburg Pike, Ste. 300
Vienna, VA 22180
P: 703.260.8204
F: 703.260.8228
www.lessardgroup.com



VIBA, INC.
20711 Century Blvd
Crumptonville, MD 20894
P: 301.918.4100
F: 301.918.2267
www.viba.com

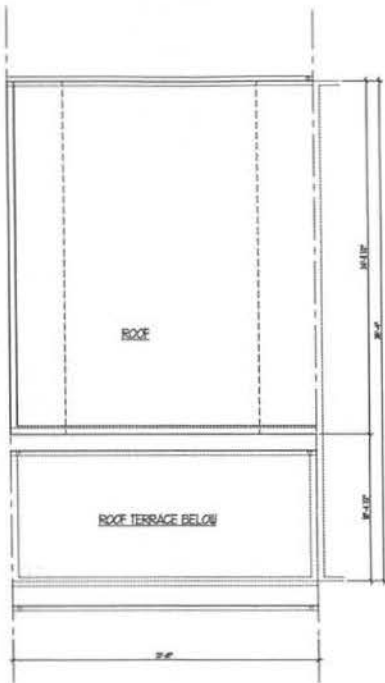


STUDIO 3P
8418 Greenbelt Dr., Ste. 108-A
Arlington, VA 22203
P: 703.718.0000
F: 703.718.0007
www.studio3p.com

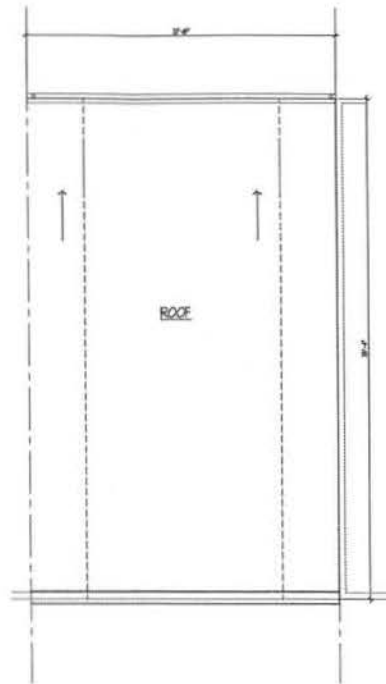
EYA.146a.00



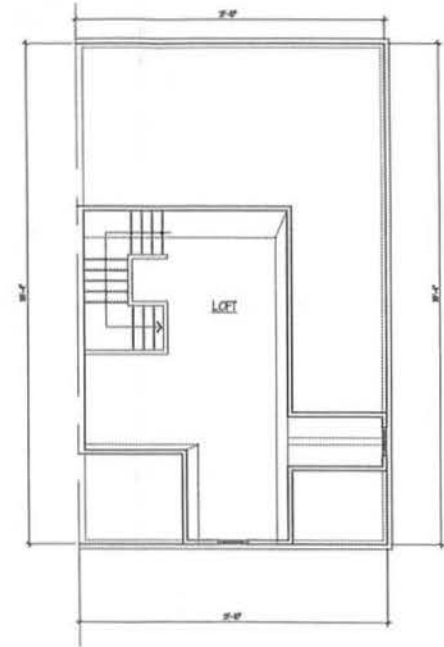
N.T.S. EY1166A-02



1
A-0
Loft Roof Plan
SCALE
EY116A-0



2
A-0
Roof Plan
SCALE
EY116A-0



1
A-0
Opt Loft Floor Plan @ Elev #5
SCALE
EY116A-0

Saint Paul's College
WASHINGTON, D.C.

THE NEIGHBORHOODS OF
EYA

UNIT TYPE 'E'

FLOOR PLANS

SEPTEMBER 10, 2007



LESSARD GROUP INC.
8721 Loring Pike, Ste. 200
Vienna, VA 22182
P: 703.763.0284
F: 703.763.3388
www.lessardgroup.com



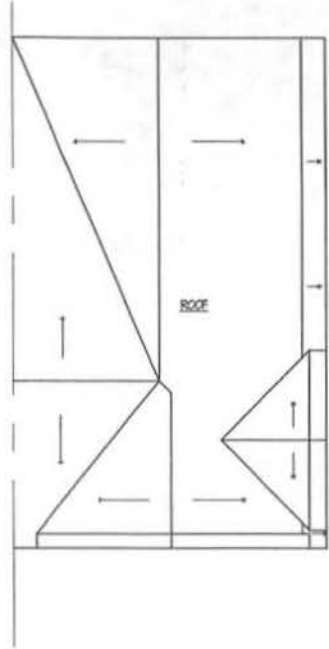
VIRA INC.
2022 Century Blvd.
Gummersville, MD 20814
P: 410.818.1000
F: 410.818.2382



STUDIO 39
6418 Greenleaf Ct., Ste. 100A
Arlington, VA 22205
P: 703.718.8000
F: 703.718.8002

EYA.146a.00





1
A-44
Roof Plan @ Elev #5
SCALE
1/16"=1'-0"

Saint Paul's College
WASHINGTON, D.C.



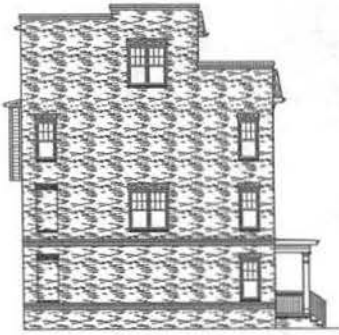
UNIT TYPE 'E'
ROOF PLANS
SEPTEMBER 10, 2007

LESSARD GROUP INC.
6221 Leesburg Pike, Ste. 300
Vienna, VA 22184
P. 703.760.1294
F. 703.760.8328
www.lessardgroup.com

VIVA, INC.
8781 Centers Blvd
Jarrattstown, VA 22074
P. 703.918.4100
F. 703.918.1262
www.vivainc.com

STUDIO 39
8418 Greenbelt Dr., Ste. 100-A
Alexandria, VA 22304
P. 703.714.8000
F. 703.714.8043
www.studio39.com

EYA-145a.00
N.T.S.
EYA145a-04



INT-040808-001

LEFT SIDE ELEVATION



INT-040808-001 INT-040808-001 INT-040808-001 INT-040808-001 INT-040808-001 INT-040808-001 INT-040808-001 INT-040808-001

FRONT ELEVATION



INT-040808-001

RIGHT SIDE ELEVATION



INT-040808-001 INT-040808-001 INT-040808-001 INT-040808-001 INT-040808-001 INT-040808-001 INT-040808-001 INT-040808-001

REAR ELEVATION



Saint Paul's College
WASHINGTON, D.C.



BUILDING ELEVATIONS

BUILDING - 1

SEPTEMBER 10, 2007



LESARD GROUP INC.
8021 Leesburg Pike, Ste. 700
Vienna, VA 22184
P: 703.760.0100
F: 703.760.0100
www.lesardgroup.com



VVA, INC.
3025 Cobble Hill
Spartanburg, SC 29304
P: 803.536.4300
F: 803.536.4302
www.vva.com



STUDIO 39
4140 Greenleaf Dr., Ste. 100A
Baltimore, VA 22104
P: 301.718.6300
F: 301.718.6300
www.studio39.com

EYA-146a.00



N.T.S. EYA146a-0-01

A-EB1



LEFT SIDE ELEVATION



FRONT ELEVATION



RIGHT SIDE ELEVATION



REAR ELEVATION



KEY PLAN

Saint Paul's College
WASHINGTON, D.C.

THE NEIGHBORHOODS OF
EYA

BUILDING ELEVATIONS

BUILDING - 2

SEPTEMBER 10, 2007



LESSARD GROUP INC.
8721 Loring Pike, Ste. 700
Manassas, VA 22110
P: 703.765.5394
F: 703.762.8338
www.lessardgroup.com



VVA, INC.
2071 Century Blvd.
Gainesville, VA 22140
P: 703.715.4100
F: 703.718.2302
www.vva.com



STUDIO 39
6416 Greenbelle Dr., Ste. 100-A
Alexandria, VA 22310
P: 703.715.6000
F: 703.715.6005
www.studio39.com

EYA.146a.00



N.T.S. EYA146a-E-02

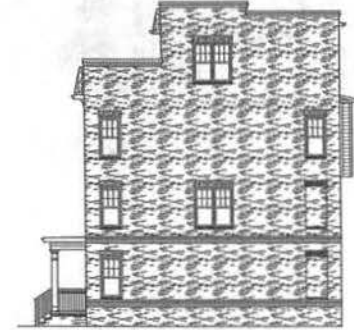
A-EB2



LEFT SIDE ELEVATION



FRONT ELEVATION



RIGHT SIDE ELEVATION



REAR ELEVATION



KEY PLAN

Saint Paul's College
WASHINGTON, D.C.



BUILDING ELEVATIONS

BUILDING - 3

SEPTEMBER 10, 2007



LESSARD GROUP INC.
8521 Leesbury Pike, Ste. 700
Falls Church, VA 22043
P: 703.790.8194
F: 703.790.8190
www.lessardgroup.com



VIKA, INC.
2020 Century Blvd
Germantown, MD 20874
P: 301.555.6100
F: 301.555.2262
www.vika.com



STUDIO 39
5436 Greenbelt Rd., Ste. 100-A
Annapolis, VA 22118
P: 703.719.6000
F: 703.719.6000
www.studio39.com

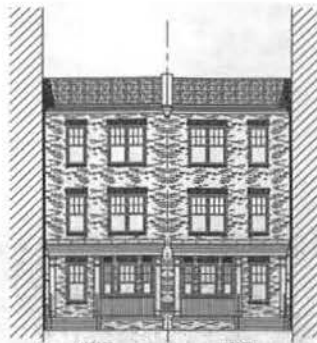
EYA.146a.00



A-EB3



LEFT FRONT ELEVATION



FRONT COURTYARD ELEVATION



RIGHT FRONT ELEVATION



LEFT SIDE REAR ELEVATION



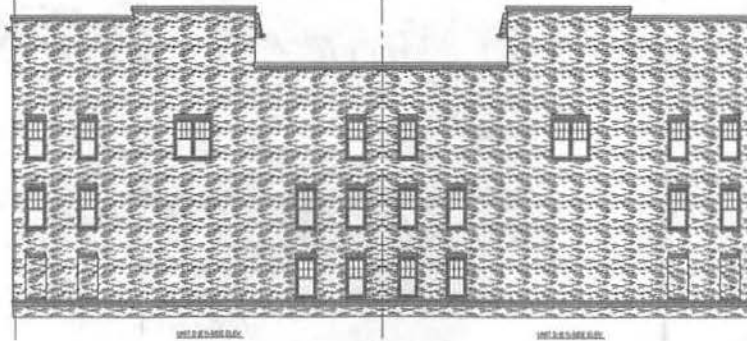
RIGHT SIDE REAR ELEVATION



LEFT SIDE ELEVATION



RIGHT SIDE ELEVATION



REAR ELEVATION



KEY PLAN

Saint Paul's College
WASHINGTON, D.C.



BUILDING ELEVATIONS

BUILDING - 4
SEPTEMBER 10, 2007



LESSARD GROUP INC.
6021 Landway Pike, Ste. 200
Alexandria, VA 22302
P: 703.765.5346
F: 703.765.5338
www.lessardgroup.com



VIVA, INC.
2025 Eastern Blvd.
Gwynnbrook, MD 20884
P: 703.218.6000
F: 703.218.6003
www.viva.com



STUDIO 39
3614 Greenleaf Dr., Ste. 100-A
Alexandria, VA 22304
P: 703.218.6000
F: 703.218.6003
www.studio39.com

EYA 145a.00



N.T.S. EYA145A-0-04

A-EB4