

**SAINT PAUL'S COLLEGE  
EYA, LLC**

**APPENDIX**

RECEIVED  
D.C. OFFICE OF ZONING  
2007 SEP 14 PM 3: 59

**DISTRICT OF COLUMBIA ZONING COMMISSION  
FOR  
CONSOLIDATED REVIEW AND APPROVAL OF A  
PLANNED UNIT DEVELOPMENT  
AND ZONING MAP AMENDMENT**

**SEPTEMBER 14, 2007**

**ZONING COMMISSION  
District of Columbia**

**CASE NO. ~~ZONING COMMISSION~~ 67-27  
District of Columbia  
EXHIBIT NO. ~~CASE NO. 07-27~~ 5  
EXHIBIT NO. 5A1**

**DRAWING INDEX**

CO-01 Drawing Index

**CML DRAWINGS**

C-1	Overall Existing Conditions plan
C-2	Detailed Existing Condition Plan
C-3	Detailed Existing Condition Plan
C-4	Detailed Existing Condition Plan
C-5	Detailed Existing Condition Plan
C-6	Detailed Existing Condition Plan
C-7	Overall Detailed Site Plan
C-8	Detailed Site Plan
C-9	Detailed Site Plan
C-10	Detailed Site Plan
C-11	Detailed Site Plan
C-12	Detailed Site Plan
C-13	Detailed Grading Plan
C-14	Detailed Grading Plan
C-15	Detailed Grading Plan
C-16	Detailed Grading Plan
C-17	Detailed Grading Plan
C-18	Detailed Wet Utility Plan
C-19	Detailed Wet Utility Plan
C-20	Detailed Wet Utility Plan
C-21	Detailed Wet Utility Plan
C-22	Detailed Wet Utility Plan
C-23	Detailed Dry Utility plan
C-24	Detailed Dry Utility plan
C-25	Detailed Dry Utility plan
C-26	Detailed Dry Utility plan
C-27	Detailed Dry Utility plan
C-28	Concept Sediment & Erosion Control Plan
C-29	Overall Circulation Plan
C-30	Detailed Circulation Plan
C-31	Detailed Circulation Plan
C-32	Detailed Circulation Plan
C-33	Detailed Circulation plan
C-33a	Detailed Circulation Plan
C-34	Site Tabulation
C-35	Site Tabulation
C-36	Green Area
C-37	Minimum Setback Tabulations
C-38	Overall Theoretical Subdivision Plan
C-39	Theoretical Subdivision Tabulations
C-40	Theoretical Subdivision Plan
C-41	Theoretical Subdivision Plan
C-42	Theoretical Subdivision Plan
C-43	Theoretical Subdivision Plan
C-44	Theoretical Subdivision Plan

**ARCHITECTURAL DRAWINGS**

A-01	Unit Type A Floor Plans
A-02	Unit Type A Floor Plans
A-03	Unit Type A Floor Plans
A-04	Unit Type A Floor Plans
A-05	Unit Type A Floor Plans
A-10	Unit Type B Floor Plans
A-11	Unit Type B Floor Plans
A-12	Unit Type B Floor Plans
A-13	Unit Type B Floor Plans
A-14	Unit Type B Floor Plans
A-20	Unit Type C Floor Plans
A-21	Unit Type C Floor Plans
A-22	Unit Type C Floor Plans
A-23	Unit Type C Floor Plans
A-24	Unit Type C Floor Plans

A-30	Unit Type D Floor Plans
A-31	Unit Type D Floor Plans
A-32	Unit Type D Floor Plans
A-33	Unit Type D Floor Plans
A-40	Unit Type E Floor Plans
A-41	Unit Type E Floor Plans
A-42	Unit Type E Floor Plans
A-43	Unit Type E Floor Plans
A-44	Unit Type E Floor Plans

A-EB1	Building Elevation Bldg-1
A-EB2	Building Elevation Bldg-2
A-EB3	Building Elevation Bldg-3
A-EB4	Building Elevation Bldg-4
A-EB5	Building Elevation Bldg-5
A-EB6	Building Elevation Bldg-6
A-EB7	Building Elevation Bldg-7
A-EB8	Building Elevation Bldg-8
A-EB9	Building Elevation Bldg-9
A-EB10	Building Elevation Bldg-10
A-EB11	Building Elevation Bldg-11
A-EB12	Building Elevation Bldg-12
A-EB13	Building Elevation Bldg-13
A-EB14	Building Elevation Bldg-14
A-EB15	Building Elevation Bldg-15
A-EB16	Building Elevation Bldg-16
A-EB17	Building Elevation Bldg-17
A-EB18	Building Elevation Bldg-18
A-EB19	Building Elevation Bldg-19
A-EB20	Building Elevation Bldg-20
A-EB21	Building Elevation Bldg-21
A-EB22	Building Elevation Bldg-22
A-EB23	Building Elevation Bldg-23
A-EB24	Building Elevation Bldg-24
A-EB25	Building Elevation Bldg-25
A-EB26	Building Elevation Bldg-26
A-EB27	Building Elevation Bldg-27
A-EB28	Building Elevation Bldg-28
A-EB29	Building Elevation Bldg-29
A-EB30	Building Elevation Bldg-30
A-EB31	Building Elevation Bldg-31
A-EB32	Building Elevation Bldg-32

A-E33	Building Sections Unit A
A-E34	Building Sections Unit A
A-E35	Building Sections Unit A
A-E36	Building Sections Unit A
A-E37	Building Sections Unit A
A-E38	Building Sections Unit B
A-E39	Building Sections Unit B
A-E40	Building Sections Unit B
A-E41	Building Sections Unit B
A-E42	Building Sections Unit B
A-E43	Building Sections Unit C
A-E44	Building Sections Unit C
A-E45	Building Sections Unit C
A-E46	Building Sections Unit C
A-E47	Building Sections Unit C
A-E48	Building Sections Unit D
A-E49	Building Sections Unit E

A-A4	Front Elevations Unit A
A-A5	Rear Elevations Unit A
A-B4	Front Elevations Unit B
A-C1	Front Elevations Unit C
A-C2	Front Elevations Unit C
A-C3	Front Elevations Unit C
A-C4	Front Elevations Unit C
A-C5	Rear Elevations Unit C
A-D1	Front Elevations Unit D
A-D2	Side Elevations Unit D
A-E3	Side Elevations Unit E
A-S1	Typical Side Elevations
A-S2	Typical Side Elevations
A-S3	Typical Side Elevations
A-S4	Typical Side Elevations

# SAINT PAUL'S COLLEGE PLANNED UNIT DEVELOPMENT

LOT 808, SQUARE 3648  
A & T, PLAT No. 3796-C  
WASHINGTON, DC



**VICINITY MAP**  
SCALE: 1" = 2000'

Saint Paul's College  
WASHINGTON, D.C.



## LIST OF DRAWINGS

SEPTEMBER 10, 2007



LESSARD GROUP INC.  
8521 Leesville Rd., Ste. 700  
Vienna, VA 22182  
P: 703.765.8244  
F: 703.765.8228  
www.lessardgroup.com



VIKA, INC.  
20311 Century Blvd.  
Germantown, MD 20874  
P: 301.844.4246  
F: 301.918.2382  
www.vika.com



STUDIO 39  
8416 Greenleaf Dr., Ste. 100-A  
Alexandria, VA 22304  
P: 703.728.6000  
F: 703.728.6002  
www.studio39.com

EYA.146a.00



CO-01



CALL "MISS UTILITY" AT  
1-800-257-7777  
48 Hours Before Start of Construction

Saint Paul's College  
WASHINGTON, D.C.

OVERALL EXISTING CONDITIONS PLAN

SEPTEMBER 10, 2007

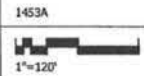


LAYOUT 1\_EX\_COND\_1st17, Plotted By: duster  
R:\1000-1800\1453\p07\p07\p07\1453100.dwg - Sep 06, 2007 AT 11:56:19 AM

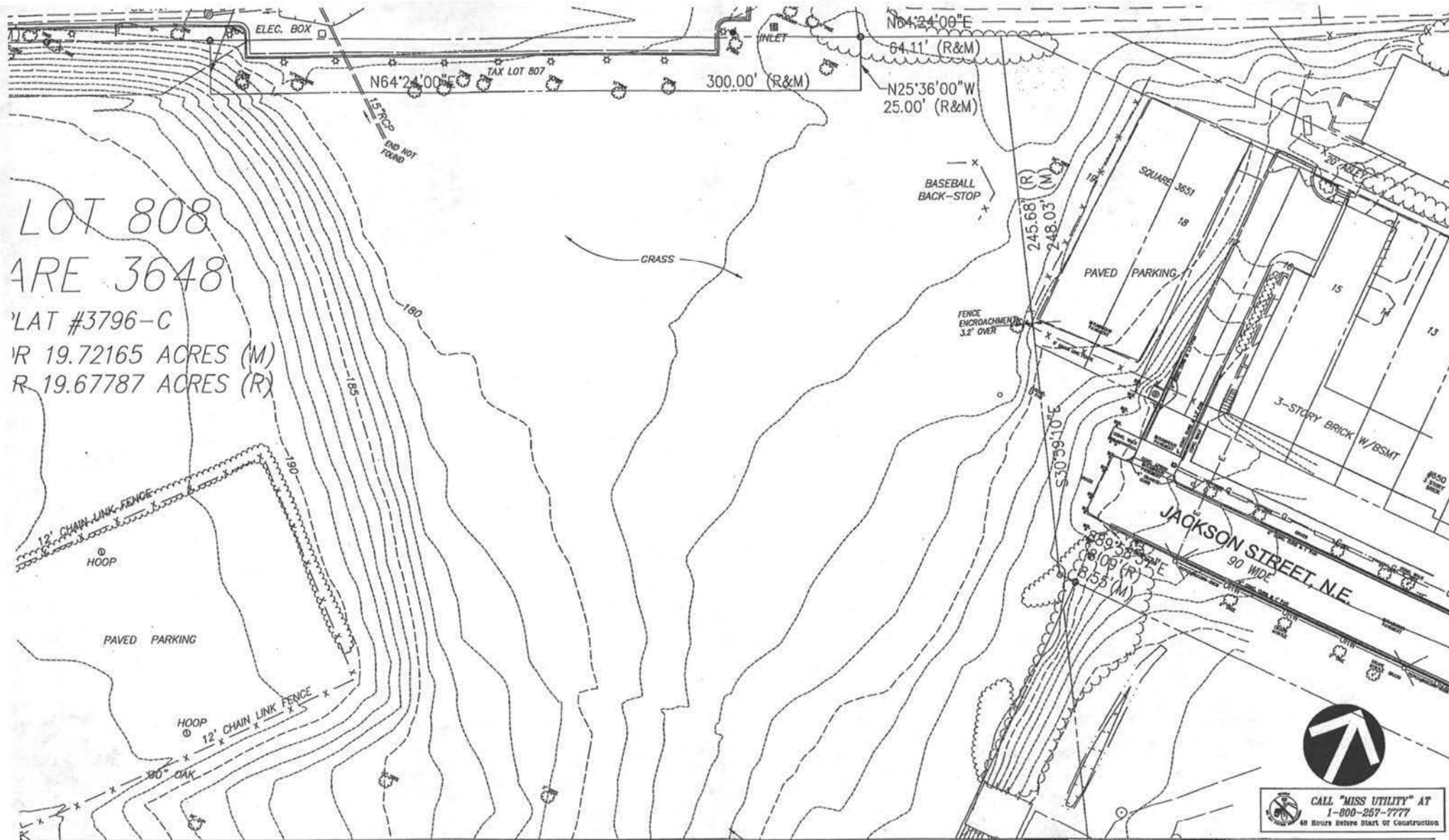
**LESSARD GROUP INC.**  
6221 Landover Pike, Ste. 700  
Vienna, VA 22188  
P: 703.265.5744  
F: 703.265.5251  
www.lessardgroup.com

**VICA INC.**  
22921 Century Blvd.  
Greenbelt, MD 20824  
P: 301.418.4120  
F: 301.418.5252  
www.vica.com

**STUDIO 39**  
9416 Greenvalley Dr. Ste. 100 A  
Alexandria, VA 22315  
P: 703.719.8800  
F: 703.719.8500  
www.studio39.com



C-1



CALL "MISS UTILITY" AT  
 1-800-267-7777  
 48 Hours Before Start of Construction

Saint Paul's College  
 WASHINGTON, D.C.

**DETAILED EXISTING CONDITIONS PLAN**

SEPTEMBER 10, 2007



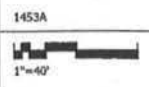
LAYOUT 2, EX. COND. 11x17, Plotted By: Guntur  
 R:\1000-1500\1431\plotted\conditury\1431105.dwg -- Exp 06, 2007 AT 11:48:28 AM

LENSARD GROUP INC. 8031 Landburg Pkwy. Ste. 700  
 Vienna, VA 22181  
 P: 703.795.8284 F: 703.795.8700  
 www.lensardgroup.com

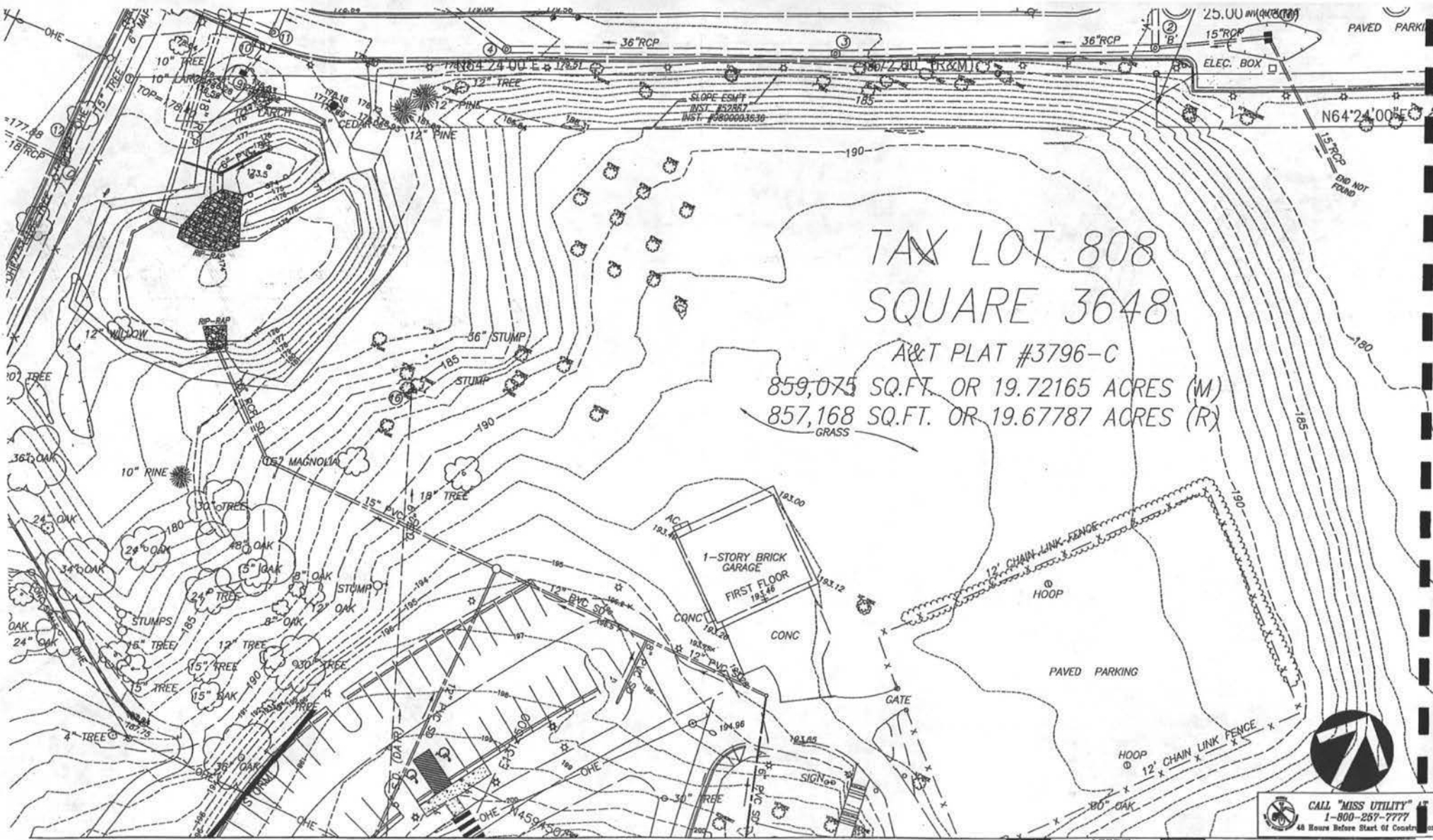
**LENSARD GROUP INC.**  
 8031 Landburg Pkwy. Ste. 700  
 Vienna, VA 22181  
 P: 703.795.8284 F: 703.795.8700  
 www.lensardgroup.com

**VEKA, INC.**  
 30251 Century Blvd.  
 Germantown, MD 20881  
 P: 301.514.4100 F: 301.514.2182  
 www.veka.com

**STUDIO 3D**  
 664 Genesee Dr. Ste. 300-A  
 Alexandria, VA 22304  
 P: 703.718.0000 F: 703.718.0000  
 www.studio3d.com



C-2



TAX LOT 808  
 SQUARE 3648

A&T PLAT #3796-C  
 859,075 SQ.FT. OR 19.72165 ACRES (M)  
 857,168 SQ.FT. OR 19.67787 ACRES (R)  
 GRASS

CALL "MISS UTILITY"  
 1-800-257-7777  
 48 Hours Before Start of Construction

Saint Paul's College  
 WASHINGTON, D.C.

DETAILED EXISTING CONDITIONS PLAN

SEPTEMBER 10, 2007



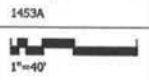
LAYOUT: 3-EX COND. 11x17, Plotted By: Darter  
 C:\V900-1800\453\453.dwg\plot\title.dwg -- Sep 06, 2007 AT 11:48:31 AM

THIS DRAWING IS THE PROPERTY OF VIKAS INC. AND IS TO BE USED ONLY FOR THE PROJECT AND SITE SPECIFICALLY IDENTIFIED HEREON. ANY REUSE OR MODIFICATION OF THIS DRAWING WITHOUT THE WRITTEN CONSENT OF VIKAS INC. IS STRICTLY PROHIBITED.

**LESSARD GROUP INC.**  
 8521 Leesburg Pike, Ste. 700  
 Vienna, VA 22186  
 P: 703.260.8344  
 F: 703.260.8320  
 www.lessardgroup.com

**VIKA INC.**  
 2021 Century Blvd.  
 Alexandria, VA 22304  
 P: 703.318.4100  
 F: 703.318.8203  
 www.vika.com

**STUDIO 39**  
 6418 Greenway Dr. Ste. 100 A  
 Alexandria, VA 22304  
 P: 703.318.6000  
 F: 703.318.6003  
 www.studio39.com



C-3




**CALL "MISS UTILITY" AT**  
**1-800-257-7777**  
 48 Hours Before Start of Construction



**Saint Paul's College**  
 WASHINGTON, D.C.

**DETAILED EXISTING CONDITIONS PLAN**

SEPTEMBER 10, 2007




LAYOUT: 4\_EX\_0090\_11x17, Plotted By: Guster  
 n:\3000-1500\4537\esd\working\4537100.dwg -- Sep 04, 2007 AT 11:45:59 AM

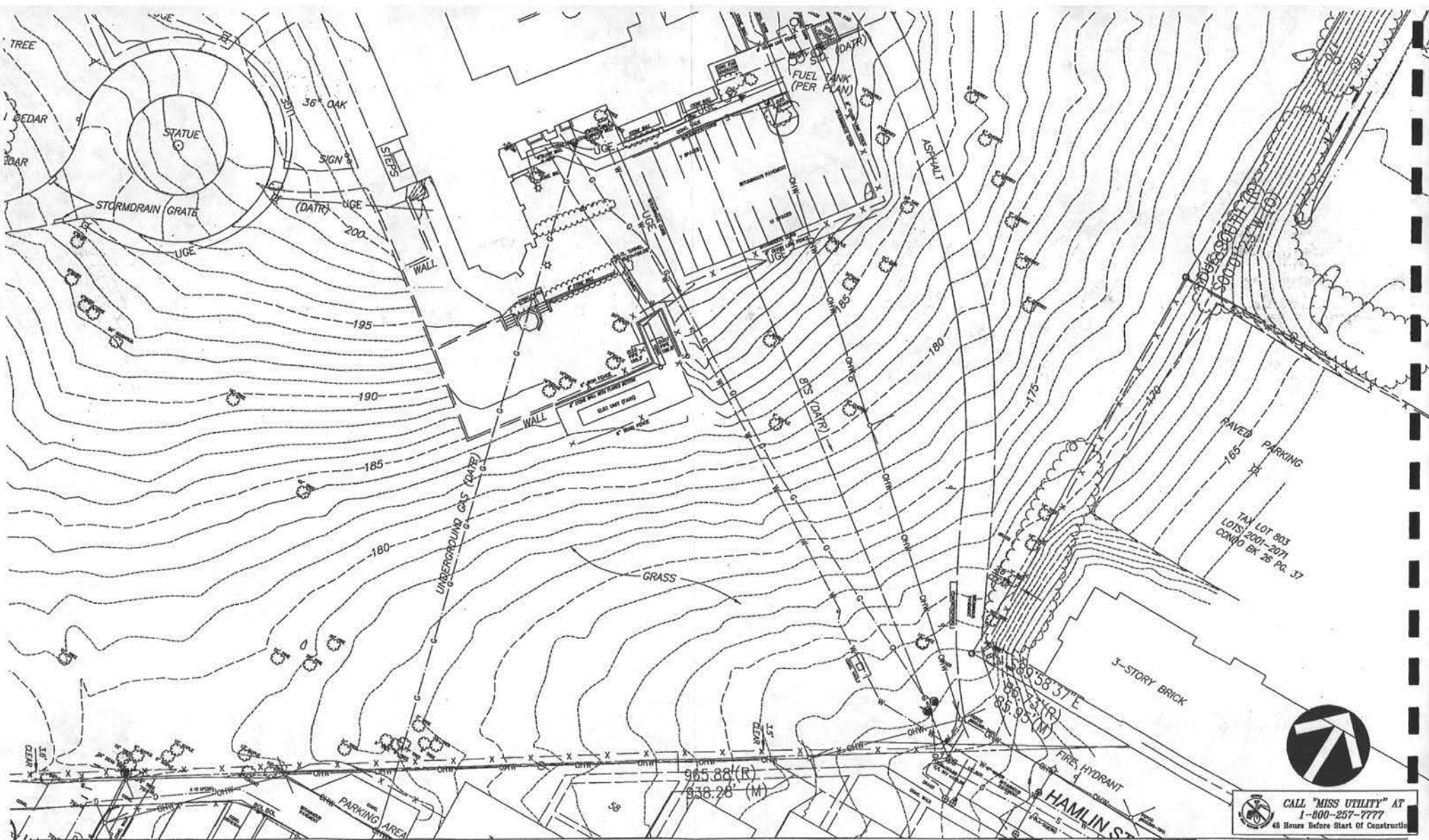
OWNER APPROVAL ONLY. EXCEPT WHERE SHOWN OTHERWISE, COPYRIGHT AND OTHER INTELLECTUAL PROPERTY RIGHTS IN THESE PLANS, THESE PLANS ARE NOT TO BE REPRODUCED OR TRANSMITTED IN ANY FORM OR BY ANY MEANS, ELECTRONIC OR MECHANICAL, INCLUDING PHOTOCOPYING, RECORDING, OR BY ANY INFORMATION STORAGE AND RETRIEVAL SYSTEM, WITHOUT THE WRITTEN PERMISSION AND CONSENT OF LESGARD GROUP INC.

  
**LESGARD GROUP INC.**  
 8511 Leesville Pike, Ste. 700  
 Virginia, VA 22152  
 P: 703.760.8344  
 F: 703.760.8338  
 www.lesgardgroup.com

  
**VIFA, INC.**  
 20221 Century Blvd.  
 Germantown, MD 20894  
 P: 301.846.4502  
 F: 301.846.2282  
 www.vifa.com

  
**STUDIO 39**  
 3414 Connecticut Dr., Ste. 100-A  
 Alexandria, VA 22310  
 P: 703.273.6900  
 F: 703.273.6503  
 www.studio39.com

1453A  
  
 1"=40'



Saint Paul's College  
WASHINGTON, D.C.



LAYOUT: S.E.C. COND. 11x17. Plotted By: Darter  
No 11000-11001\453\cond\gwa\linary\143100.dwg. -- Sep 08, 2007 AT 11:50:07 AM

DETAILED EXISTING CONDITIONS PLAN

SEPTEMBER 10, 2007

THIS LAYOUT OR ANY PART THEREOF IS UNLAWFUL TO REPRODUCE OR TRANSMIT IN ANY FORM OR BY ANY MEANS, WITHOUT THE WRITTEN PERMISSION OF THE DESIGNER. THE DESIGNER ASSUMES NO LIABILITY FOR ANY DAMAGE TO PERSONS OR PROPERTY ARISING FROM THE USE OF THIS PLAN, WITHOUT FIRST OBTAINING THE WRITTEN PERMISSION OF THE DESIGNER.



LESSARD GROUP INC.  
8511 Leesburg Pike, Ste. 700  
Vienna, VA 22186  
P: 703.700.5244  
F: 703.700.5252  
www.lessardgroup.com

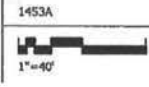


VIVA, INC.  
20331 Century Blvd.  
Greenwood, MD 22032  
P: 703.824.4200  
F: 703.824.2202  
www.viva.com



STUDIO 39  
8418 Greenleaf Dr., Ste. 100-A  
Arlington, VA 22202  
P: 703.744.6300  
F: 703.744.6301  
www.studio39.com

CALL "MISS UTILITY" AT  
1-800-257-7777  
48 Hours Before Start of Construction



C-5



Saint Paul's College  
WASHINGTON, D.C.



DETAILED EXISTING CONDITIONS PLAN

SEPTEMBER 10, 2007

LAYOUT: 6.EC\_C000\_11d7\_Plot17.dwg  
 10/19/07-1500/1483/lessard@princeton.edu  
 10/19/07 AT 11:50:31 AM

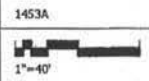
LESSARD GROUP INC. 20251 Landburg Pike, Ste. 700  
 Manassas, VA 22033  
 P: 703.360.5244  
 F: 703.360.5239  
 www.lessardgroup.com



VIKI, INC.  
 20251 Century Blvd.  
 Manassas, VA 22033  
 P: 703.938.4200  
 F: 703.938.2222  
 www.viki.com



STUDIO 39  
 6418 Glenmont Dr., Ste. 100-A  
 Alexandria, VA 22315  
 P: 703.710.6500  
 F: 703.710.8900  
 www.studio39.com



C-6



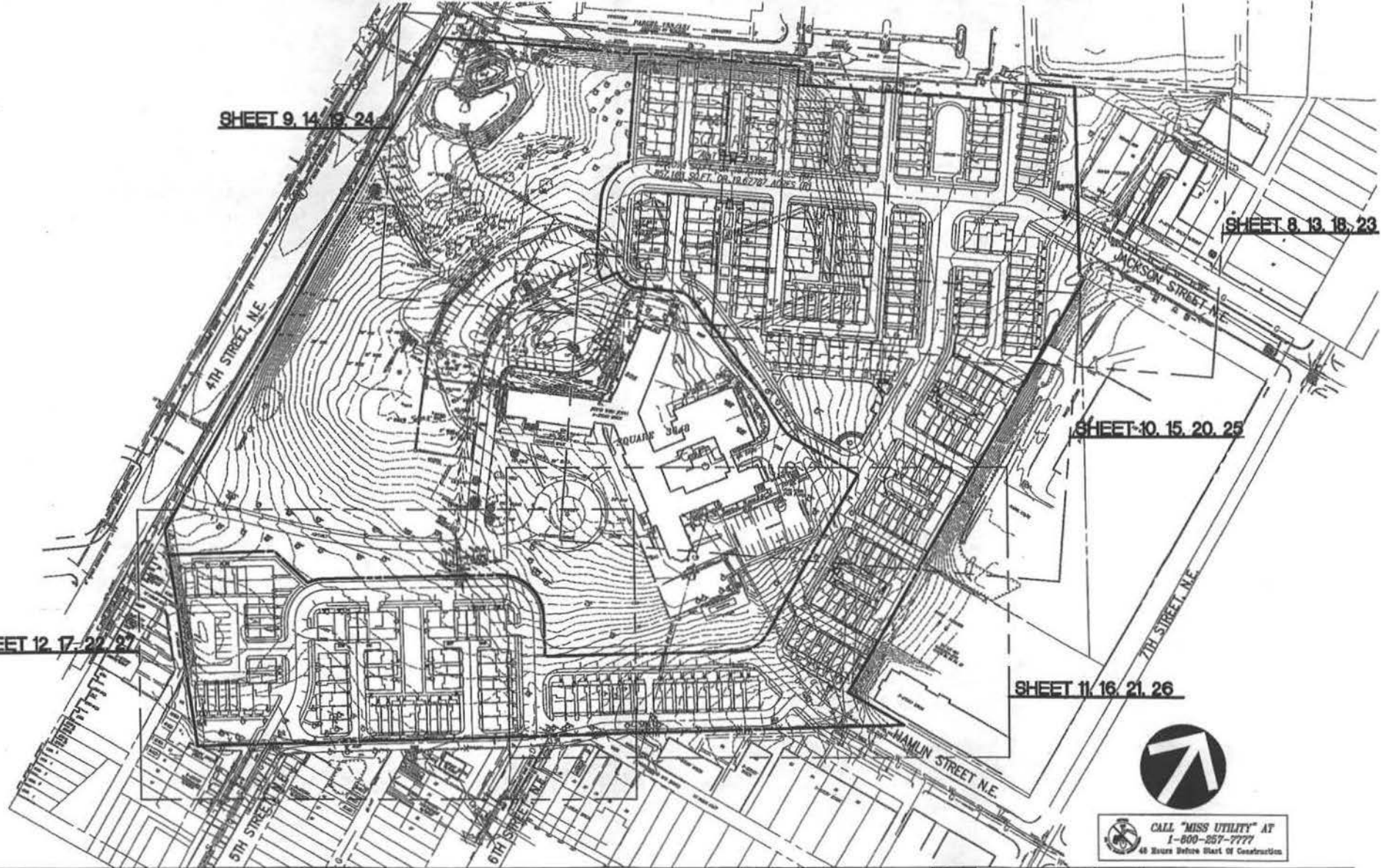
SHEET 9. 14. 19. 24

SHEET 8. 13. 18. 23

SHEET-10. 15. 20. 25

SHEET 12. 17. 22. 27

SHEET 11. 16. 21. 26



CALL "MISS UTILITY" AT  
1-800-857-7777  
48 Hours Before Start of Construction

Saint Paul's College  
WASHINGTON, D.C.

OVERALL DETAILED SITE PLAN

SEPTEMBER 10, 2007



LAYOUT: T, DETAIL: W12, Plotted By: Daulton  
01/16/08-1540/1443/acad/pschoolary/145100.dwg, - Sep 06, 2007 AT 11:58:43 AM

THIS DRAWING AND ALL CONTENTS ARE THE PROPERTY OF LESBARD GROUP INC. AND SHALL REMAIN THE PROPERTY OF LESBARD GROUP INC. IF YOU ARE NOT AN EMPLOYEE OF LESBARD GROUP INC. ANY REPRODUCTION OR TRANSMISSION OF THIS DRAWING OR ANY PART OF ITS CONTENTS, WITHOUT THE WRITTEN PERMISSION OF LESBARD GROUP INC. IS STRICTLY PROHIBITED.

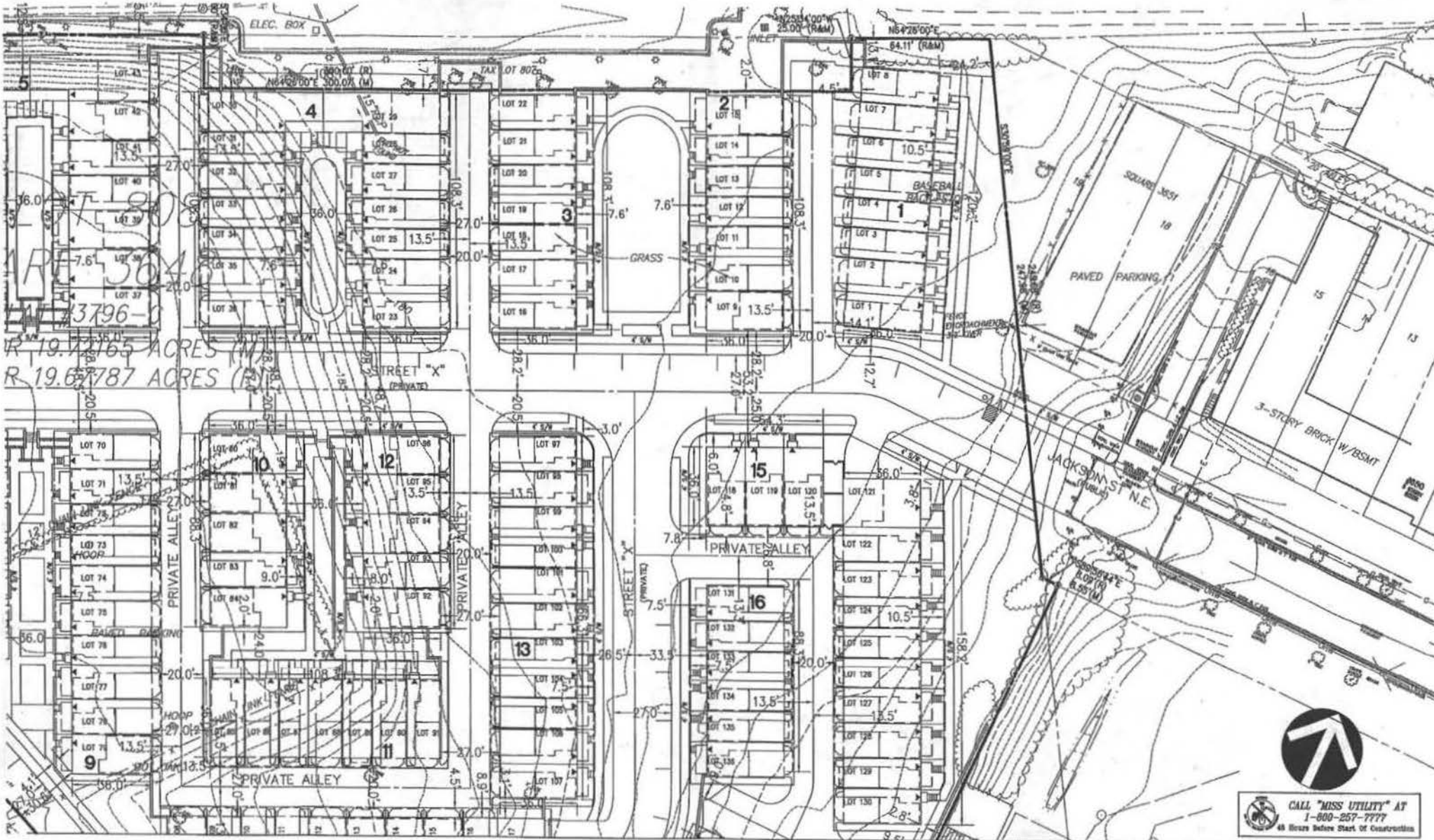
**LESBARD GROUP INC.**  
8811 Leesdale Rd. Ste. 700  
Manassas, VA 22116  
P: 703.780.8344  
F: 703.780.8338  
www.lesbargroup.com

**VKA, INC.**  
2025 Century Blvd.  
Germantown, MD 20874  
P: 301.518.4300  
F: 301.518.2243  
www.vka.com

**STUDIO 39**  
3418 Greenleaf Dr. Ste. 100-A  
Silverdale, WA 98283  
P: 360.713.6500  
F: 360.713.6503  
www.studio39.com



C-7



RE 3796-  
 R 19.72665 ACRES (M)  
 R 19.62787 ACRES (B)

**Saint Paul's College**  
 WASHINGTON, D.C.

**DETAILED SITE PLAN**



SEPTEMBER 10, 2007

LAYOUT & DETAILS BY: T111, Printed By: Dexter  
 K:\1000-1007\1111\1111\1111.dwg -- Sep 08, 2007 AT 11:42:33 AM

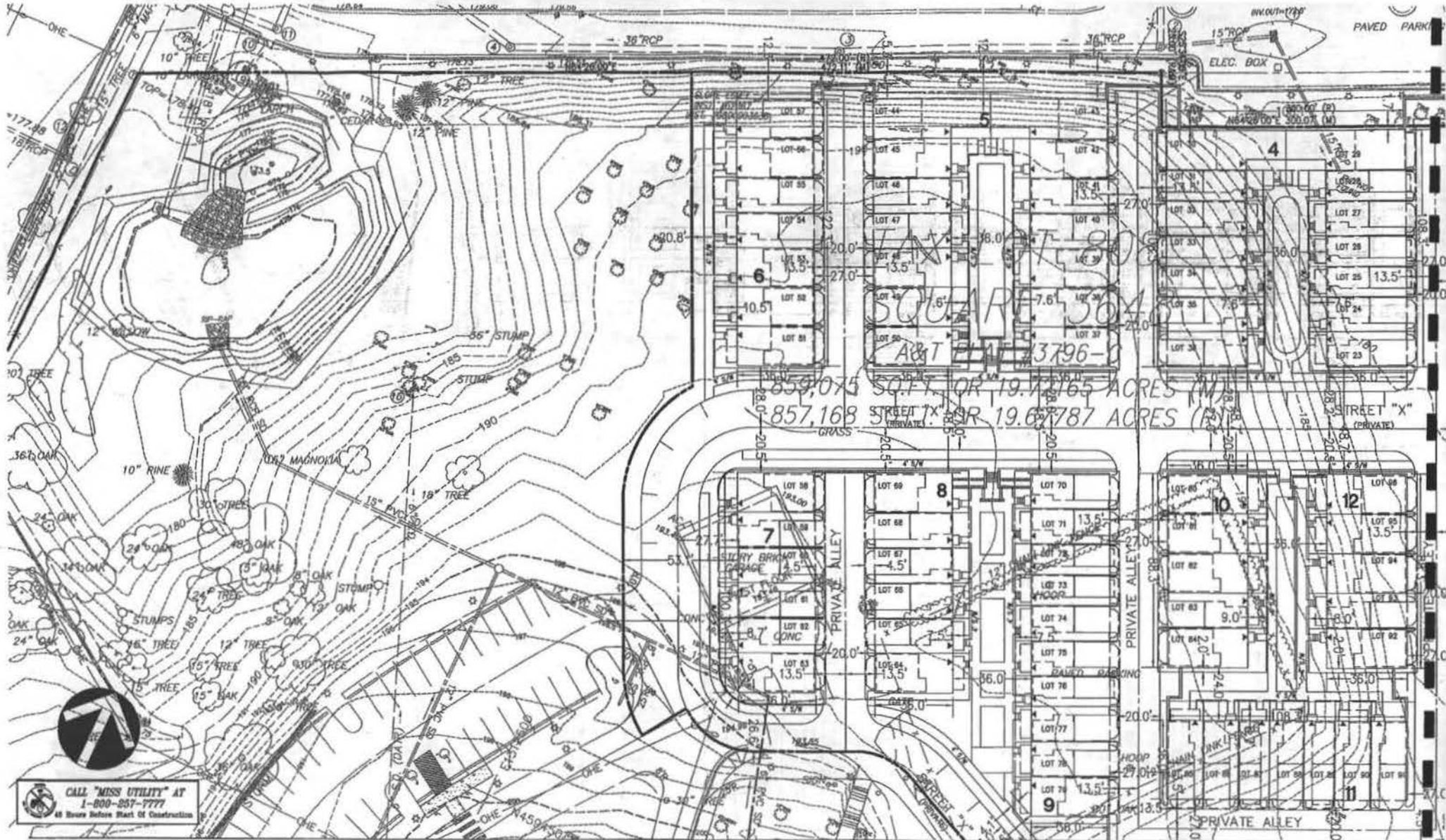
**LESBARD GROUP INC.**  
 8911 Lesbard Pk. No. 100  
 Vienna, VA 22181  
 P: 703.730.8344  
 F: 703.730.8349  
 www.lesbardgroup.com

**VVA, INC.**  
 2503 Century Blvd.  
 Chesapeake, VA 23041  
 P: 703.616.4300  
 F: 703.616.4300  
 www.vva.com

**STUDIOS 39**  
 8448 Broadview Dr., Ste. 100-A  
 Alexandria, VA 22304  
 P: 703.618.0000  
 F: 703.618.0000  
 www.studios39.com

CALL "MISS UTILITY" AT  
 1-800-257-7777  
 48 Hours Before Start Of Construction

1453A  
  
 1"=40'



CALL "MISS UTILITY" AT  
1-800-857-7777  
48 Hours Before Start of Construction

Saint Paul's College  
WASHINGTON, D.C.



DETAILED SITE PLAN

SEPTEMBER 10, 2007

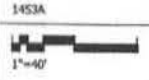
LAYOUT 8-DETAILED SITE PLAN, Plotted By: Suler  
S:\1000-1500\1453\plan\qual\lms\1453500.dwg, - Sep 08, 2007 at 11:42:43 AM

WE warrant that the information contained herein was prepared in accordance with the professional standards and practices of the profession of landscape architecture.

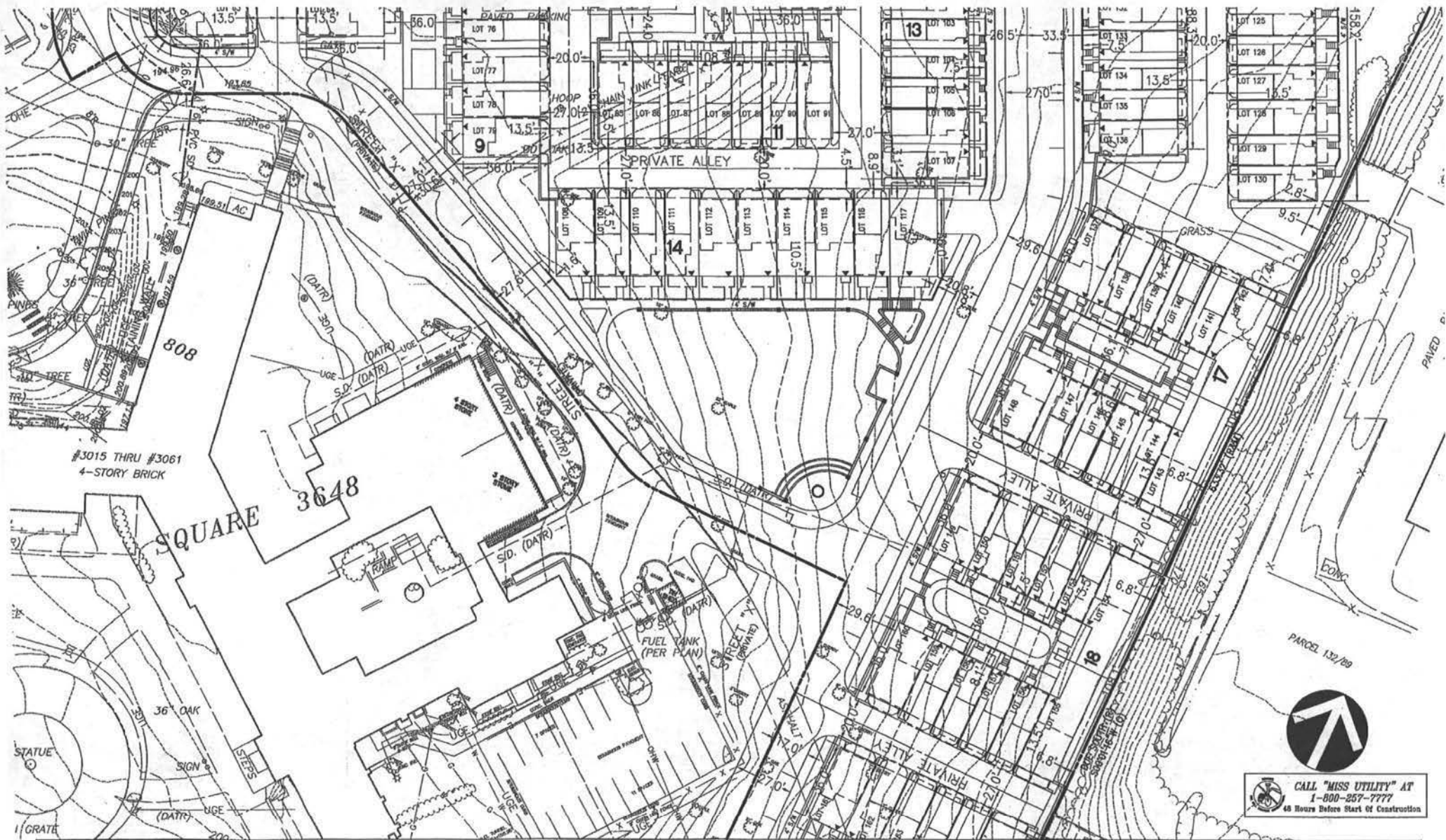
LEONARD GROUP INC.  
8331 Leesburg Pike, Ste. 700  
Falls Church, VA 22048  
P: 703.290.8100  
F: 703.290.8100  
www.leonardgroup.com

VIFA INC.  
20251 Century Blvd  
Manassas, VA 20108  
P: 703.314.4100  
F: 703.314.4200  
www.vifa.com

STUDIO 89  
914 Oldhouse Ct. Ste. 100-A  
Manassas, VA 20108  
P: 703.314.4100  
F: 703.314.4200  
www.studio89.com



C-9



#3015 THRU #3061  
4-STORY BRICK

SQUARE 3648


  
**CALL "MISS UTILITY" AT**  
**1-800-257-7777**  
 48 Hours Before Start of Construction

Saint Paul's College  
WASHINGTON, D.C.

DETAILED SITE PLAN

SEPTEMBER 10, 2007



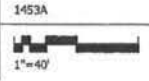
LAYOUT: 10-DETAILED SITE 11x17, Plotted By: Guntar  
 10/10/07-1300/443/yard@wshbury/443100.dwg - Sep 04, 2007 At 11:42:01 AM

EXCEPT WHERE SHOWN OTHERWISE, ALL DIMENSIONS ARE TO FACE UNLESS OTHERWISE NOTED. THESE PLANS ARE NOT TO BE REPRODUCED OR COPIED IN ANY FORM OR BY ANY MEANS, WITHOUT THE WRITTEN PERMISSION OF LESARD GROUP INC.

**LESARD GROUP INC.**  
 8121 Landover Pike, Ste. 700  
 Vienna, VA 22182  
 P: 703.260.0344  
 F: 703.260.0328  
 www.lesardgroup.com

**VKA, INC.**  
 2289 Century Blvd.  
 Chesapeake, VA 23024  
 P: 703.616.6120  
 F: 703.616.6025  
 www.vka.com

**STUDIO 39**  
 6148 Greenleaf Cr. Ste. 100-A  
 Chesapeake, VA 23024  
 P: 703.218.6300  
 F: 703.218.6025  
 www.studio39.com



C-10



Saint Paul's College  
WASHINGTON, D.C.

DETAILED SITE PLAN

SEPTEMBER 10, 2007



LAYOUT 11, DETAILED SITE PLAN, Plotted By: Doris  
H:\000-1000\1453\444\gradplan\1453100.dwg - Sep 04, 2007 AT 11:42:38 AM

NOTHING SHOWN OR SPECIFIC NOTED ON THIS PLAN IS TO BE CONSIDERED AN ASSURANCE OR OTHER PROPERTY RIGHTS BY THESE PLANS. THESE PLANS ARE NOT TO BE REPRODUCED, COPIED OR USED IN ANY MANNER WITHOUT THE WRITTEN CONSENT OF THE ARCHITECT. THE ARCHITECT ASSUMES NO LIABILITY FOR ANY ERRORS OR OMISSIONS ON THIS PLAN.

**LESSARD GROUP INC.**  
8021 Leesville Pike, Ste. 700  
Wenatchee, WA 98808  
P: 509.838.4100  
F: 509.838.4101  
www.lessardgroup.com

**VIKA, INC.**  
20315 Century Blvd.  
Shoreline, WA 98133  
P: 206.816.4100  
F: 206.816.4101  
www.vika.com

**STUDIO 39**  
6018 Grandale Dr., Ste. 100-A  
Phenixville, PA 19376  
P: 717.718.8300  
F: 717.718.8302  
www.studio39.com

1453A



C-11

CALL "MISS UTILITY" AT  
1-800-257-7777  
48 Hours Before Start of Construction





CALL "MISS UTILITY" AT  
1-800-257-7777  
48 Hours Before Start Of Construction

Saint Paul's College  
WASHINGTON, D.C.

DETAILED SITE PLAN

SEPTEMBER 10, 2007



LAYOUT: 12\_DETAILED SITE 11x17, Plotted By: Guntur  
N:\1000-1800\1453\p\add\p\m\l\145306.dwg - Sep 06, 2007 At 11:43:08 AM

WEBSITE: www.saintpaulscollege.edu

LESSARD GROUP INC.  
6511 Leesville Pike, Ste. 700  
Vienna, VA 22181  
P: 703.750.5344  
F: 703.750.5328  
www.lessardgroup.com

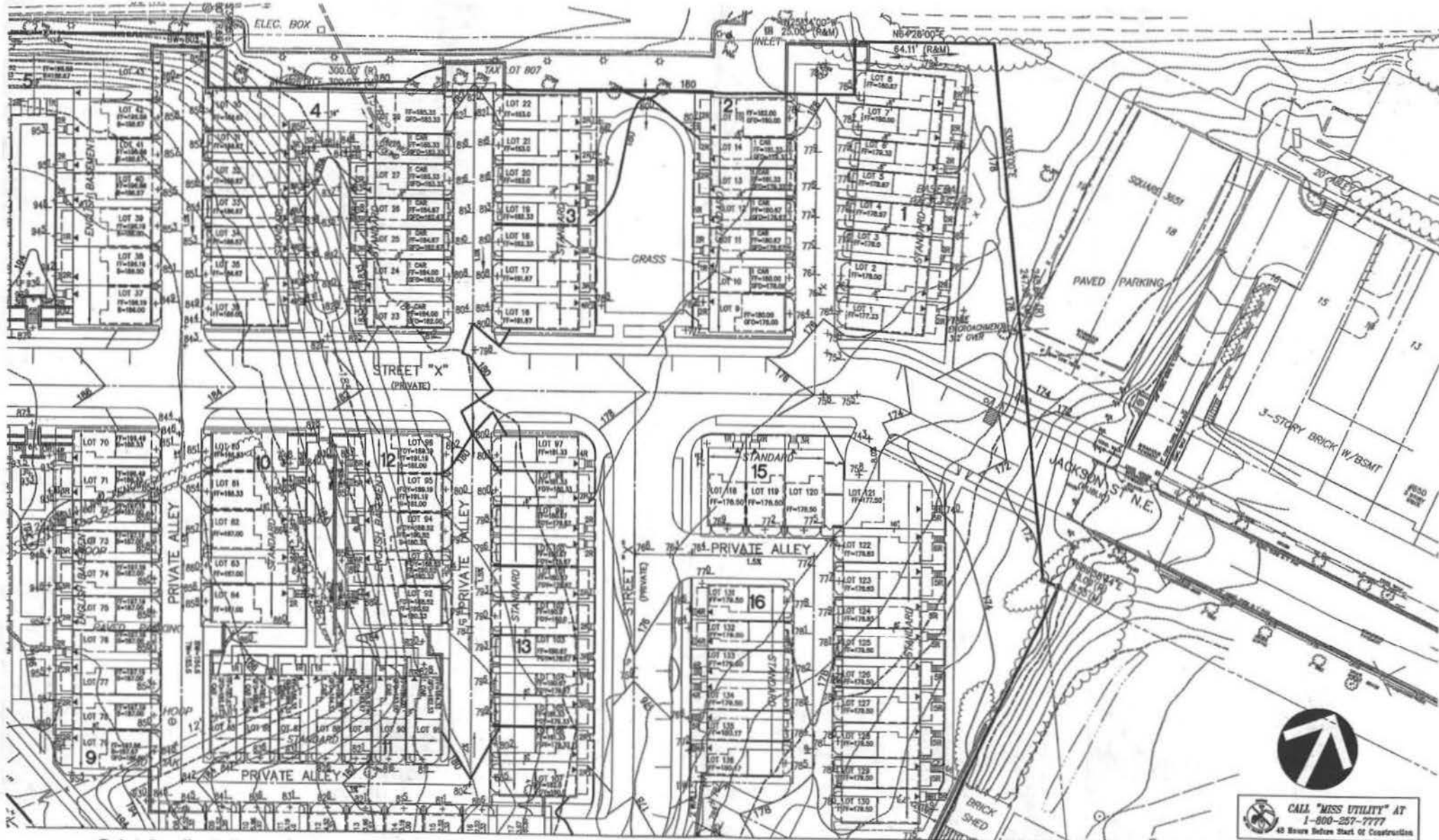
VIFA INC.  
2053 Century Blvd.  
Gwynnsville, MO 66044  
P: 781.554.6500  
F: 781.554.6502  
www.vifa.com

STUDIO 39  
8450 Greenleaf Ct., Ste. 100A  
Alexandria, VA 22315  
P: 703.718.6400  
F: 703.718.6400  
www.studio39.com

1453A



C-12



Saint Paul's College  
WASHINGTON, D.C.

DETAILED GRADING PLAN

SEPTEMBER 10, 2007



LAYOUT 13, Revised Grading 11/07, Printed By: Dmiller  
N:\3300-1307\1453\pdx\graphics\1453200\_Grading.dwg - Sep 08, 2007 AT 11:20:54 AM

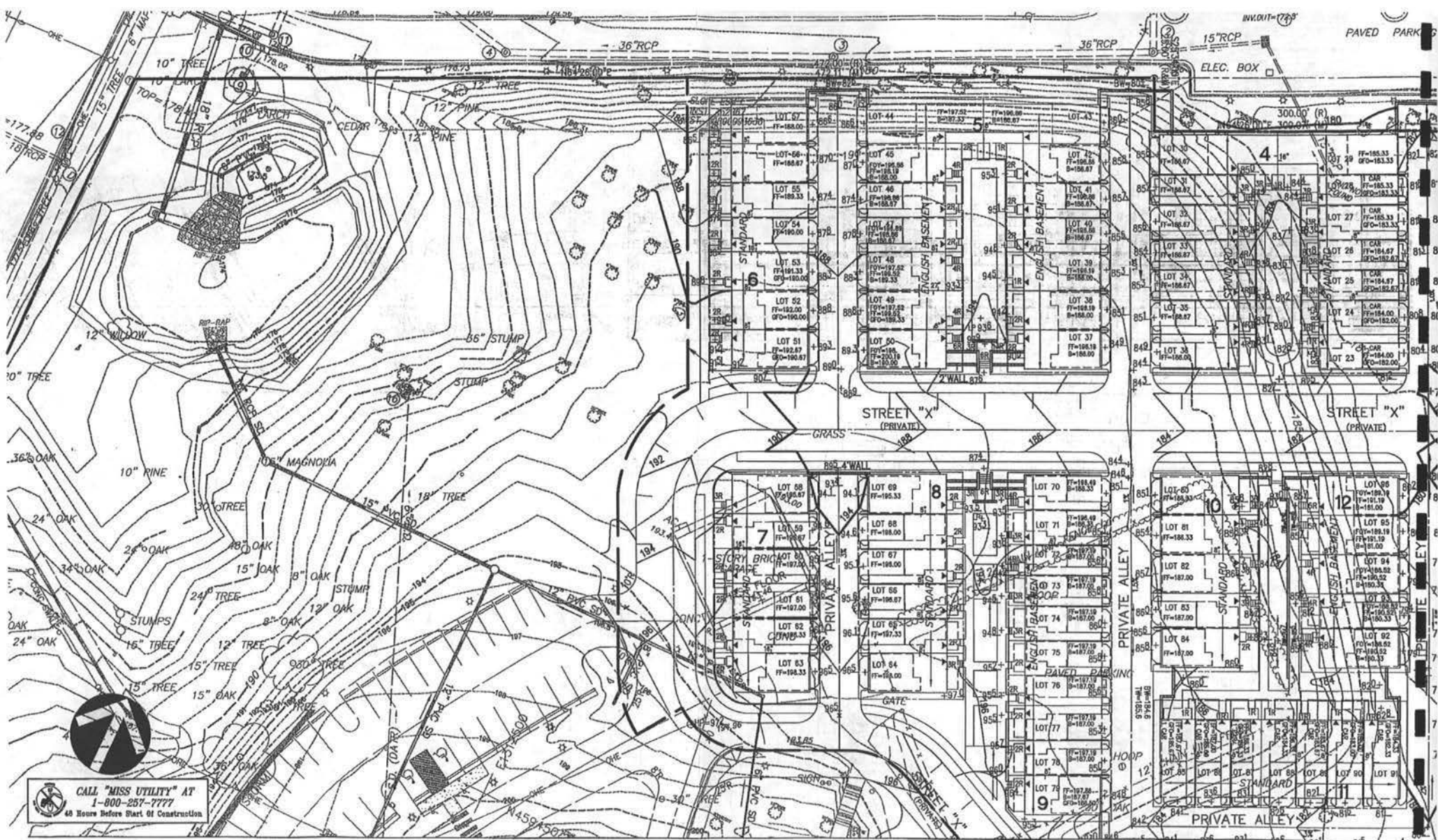
NOTHING SHOWN ON THIS PLAN IS TO BE CONSIDERED AS A GUARANTEE OF ACCURACY OR AS A REPRESENTATION OF THE DESIGNER'S LIABILITY. THESE PLANS AND SPECIFICATIONS ARE THE PROPERTY OF THE DESIGNER AND ARE NOT TO BE REPRODUCED OR COPIED IN ANY MANNER WITHOUT THE WRITTEN PERMISSION OF THE DESIGNER. THE DESIGNER SHALL BE RESPONSIBLE FOR THE ACCURACY OF THE INFORMATION PROVIDED ON THESE PLANS.



CALL "MISS UTILITY" AT  
1-800-257-7777  
48 Hours Before Start of Construction



C-13



Saint Paul's College  
WASHINGTON, D.C.

DETAILED GRADING PLAN

SEPTEMBER 10, 2007



LAYOUT: 14-Detailed Grading 11x17, Plotted By: Guter  
K:\1000-1907\451\cadd\grb\ybr\451006\_Grading.dwg -- Spw 06, 04 AT 11:51:44 AM

LESSARD GROUP INC. EXPRESSLY DISCLAIMS ANY WARRANTY OR LIABILITY FOR THESE PLANS. THESE PLANS ARE SET BY THE ARCHITECT OR ENGINEER OR OTHER PROFESSIONAL PERSON OR COMPANY IN ACCORDANCE WITH THE PROFESSIONAL SEAL AND SIGNATURE OF SAID PROFESSIONAL PERSON OR COMPANY. THE ARCHITECT OR ENGINEER OR OTHER PROFESSIONAL PERSON OR COMPANY IS NOT RESPONSIBLE FOR ANY ERRORS OR OMISSIONS ON THESE PLANS, WITHOUT FIRST DETERMINING THE EXTENT OF SUCH PERSON'S OR COMPANY'S LIABILITY.

LESSARD GROUP INC.  
8021 Leesburg Pike, Ste. 700  
Manassas, VA 22116  
P: 703.760.8244  
F: 703.760.8200  
www.lessardgroup.com

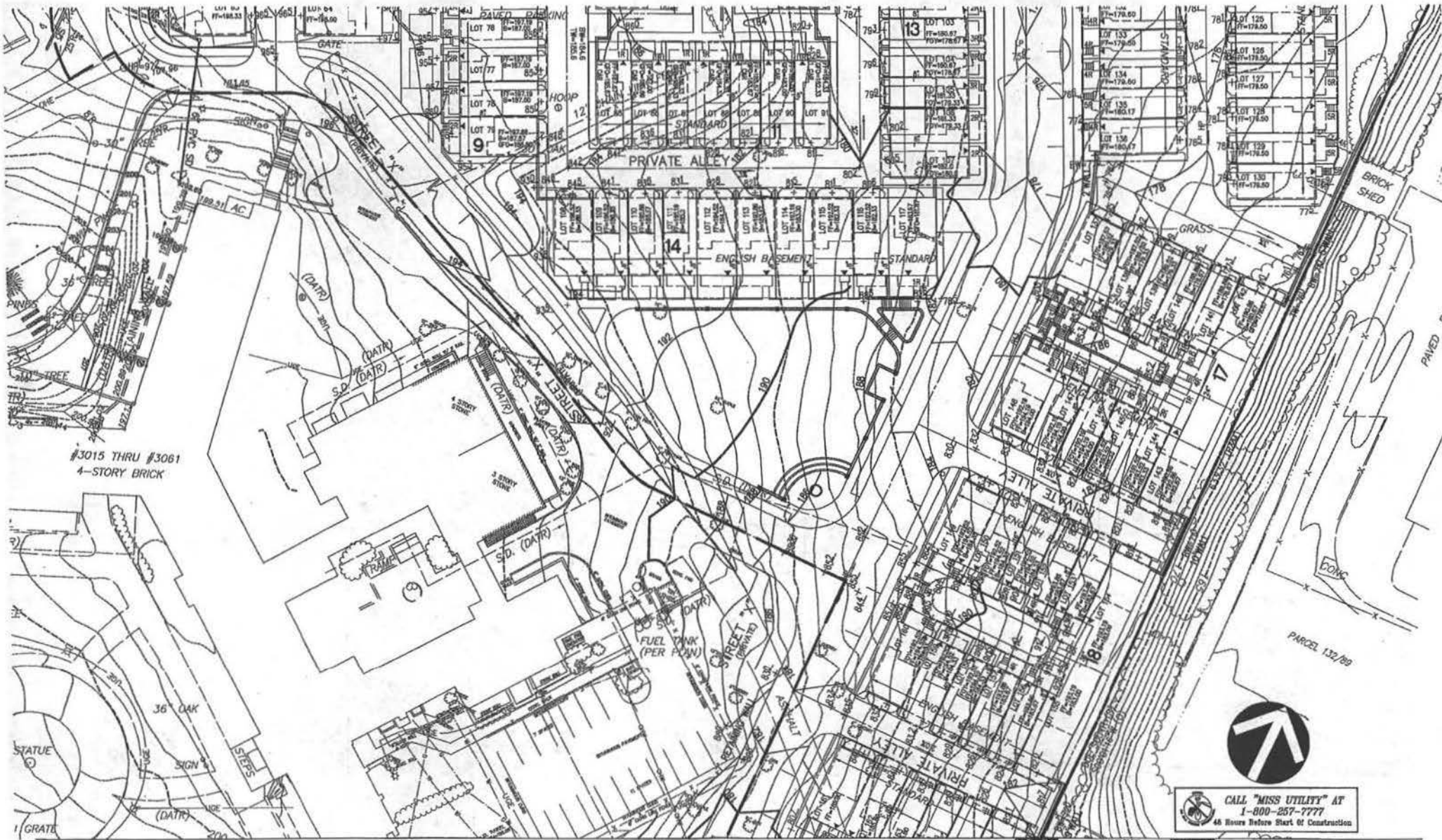
VIKA INC.  
20231 Century Blvd.  
Greenwood, MD 22034  
P: 703.749.6800  
F: 703.749.2815  
www.vika.com

STUDIO 3P  
6418 Greenleaf Dr. Ste. 100-A  
Alexandria, VA 22304  
P: 703.749.6800  
F: 703.749.2815  
www.studio3p.com



C-14





Saint Paul's College  
WASHINGTON, D.C.

DETAILED GRADING PLAN

SEPTEMBER 10, 2007



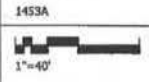
LAYOUT: 19, Detailed Grading 11x17, Plotted By: Quater  
© 1000-1300 \103\quater\mwherry\1432106\_Drading.dwg. - Sep 08, 2007 AT 11:21:33 AM

KEEP THESE SHEETS AND EXISTING APPROXIMATE ELEVATIONS IN CONTACT WITH CONTRACTOR AND OTHER NEARBY SHEETS OF EXISTING PLANS. VERIFY ALL DATA AND SET TO BE SUPERSEDED OR CORRECTED ON CHANGES TO ANY PART OF EXISTING PLANS. I, SA 14151 TO BE ASSIGNED TO ANY OTHER AREA, WITHOUT FIRST OBTAINING THE WRITTEN PERMISSION AND CONSENT OF LESBARD GROUP INC.

**LESBARD GROUP INC.**  
8332 Leesburg Pike, Ste. 700  
Manassas, VA 20108  
P: 703.380.5594  
F: 703.762.8339  
www.lesbargroup.com

**VICA, INC.**  
10111 Century Blvd.  
Newport News, VA 23604  
P: 757.838.4190  
F: 757.838.2383  
www.vica.com

**STUDIO 3P**  
8418 Greenbush Dr., Ste. 100-A  
Alexandria, VA 22304  
P: 757.718.6500  
F: 757.718.6283  
www.studio3p.com



C-15

CALL "MISS UTILITY" AT  
1-800-257-7777  
48 Hours Before Start of Construction



CALL "MISS UTILITY" AT  
1-800-267-7777  
48 Hours Before Start of Construction

Saint Paul's College  
WASHINGTON, D.C.

**DETAILED GRADING PLAN**

SEPTEMBER 10, 2007



LAYOUT 16\_Detailed Grading 11x17, Plotted By: Duster  
10/10/06-10/01/07/1457/med/p/initials/1453105\_Grading.dwg - Sep 06, 2007 AT 11:21:20 AM

LESSARD GROUP INC. EXPRESSLY DISCLAIMS ANY AND ALL WARRANTIES AND OTHER INCIDENT RIGHTS IN THESE PLANS. THESE PLANS ARE NOT TO BE REPRODUCED OR COPIED IN ANY MANNER WITHOUT THE WRITTEN PERMISSION OF THE ARCHITECT AND/OR ENGINEER OF RECORD.

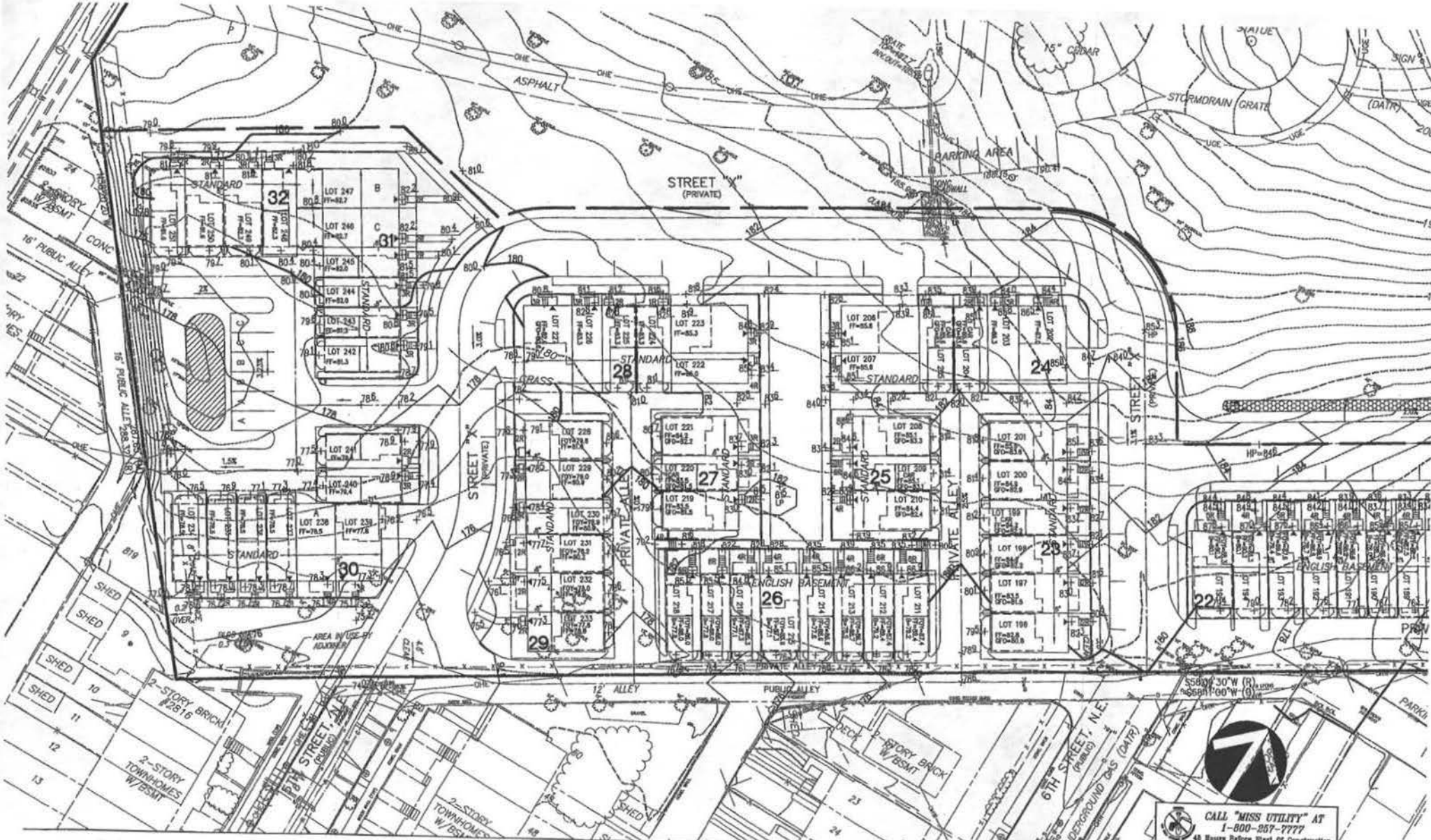
**LESSARD GROUP INC.**  
8521 Leesburg Pike, Ste. 700  
Vienna, VA 22182  
P: 703.790.9184  
F: 703.790.9128  
www.lessardgroup.com

**VIVA INC.**  
3021 Century Blvd.  
Gaithersburg, MD 20878  
P: 301.686.4100  
F: 301.616.2283  
www.viva.com

**STUDIO 39**  
6418 Greenville Dr., Ste. 100-A  
Alexandria, VA 22310  
P: 703.729.6000  
F: 703.774.6800  
www.studio39.com



C-16



Saint Paul's College  
WASHINGTON, D.C.

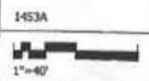
DETAILED GRADING PLAN

SEPTEMBER 10, 2007



LAYOUT: 17-Detailed Grading Plan, Posted By: Student  
 01/30/00-09/10/07/Student/01/30/00-09/10/07/Student

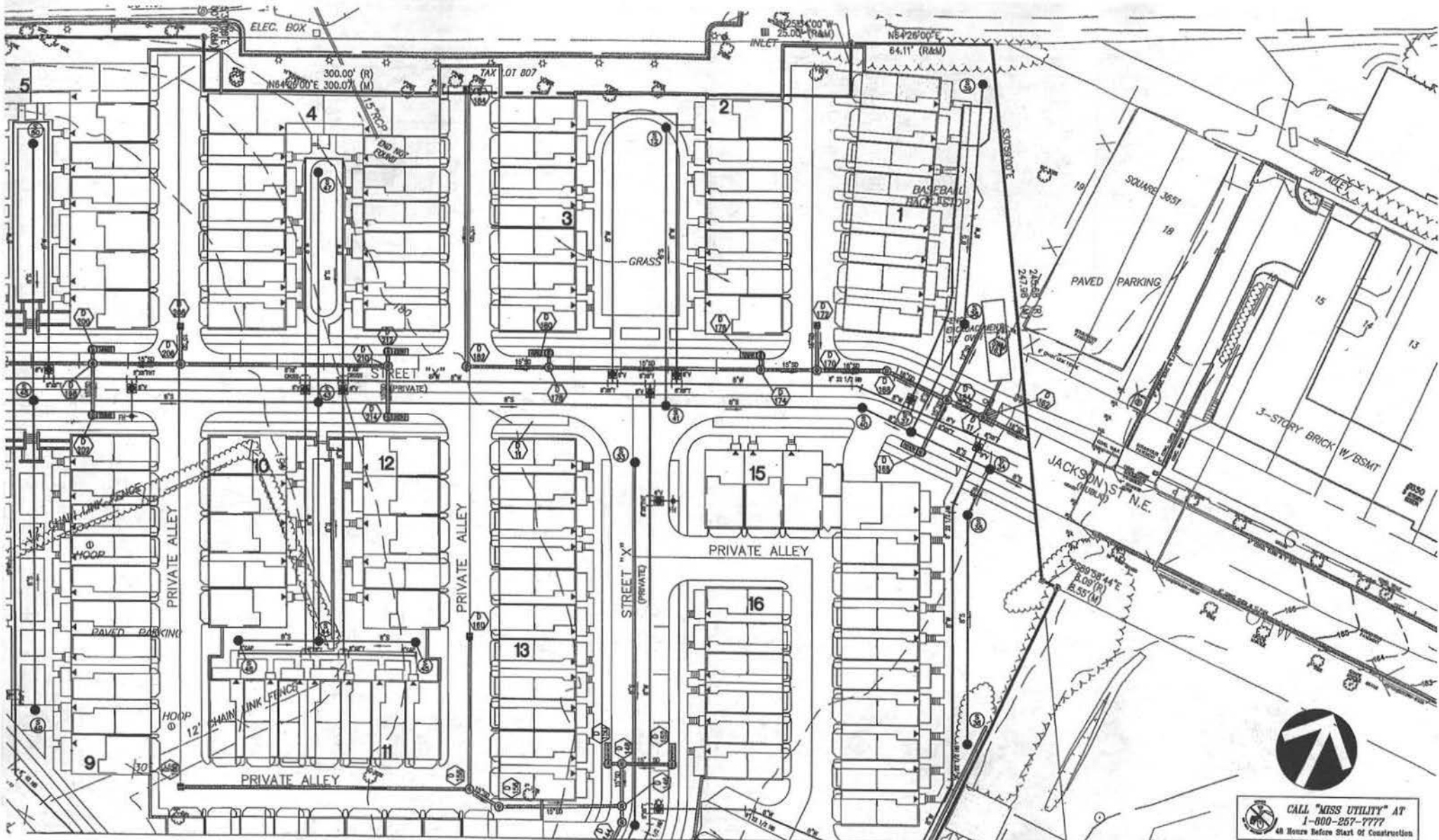
THIS DRAWING IS THE PROPERTY OF THE DESIGNER AND IS NOT TO BE REPRODUCED OR COPIED IN ANY MANNER WITHOUT THE WRITTEN PERMISSION OF THE DESIGNER. THE DESIGNER ASSUMES NO LIABILITY FOR ANY DAMAGE OR INJURY TO PERSONS OR PROPERTY ARISING FROM THE USE OF THIS DRAWING.



C-17

CALL "MISS UTILITY" AT  
 1-800-287-7777  
 48 Hours Before Start of Construction





Saint Paul's College  
WASHINGTON, D.C.

DETAILED WET UTILITY PLAN



LAYOUT 14-DETAILED WET UTIL (1x17), Printed Sp. 0x1x1  
H:\1000-1500\143\143.dwg\utility\1432100.dwg - Sep 08, 2007 AT 11:28:04 AM

SEPTEMBER 10, 2007

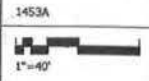
THIS DRAWING IS THE PROPERTY OF VIFA, INC. AND IS NOT TO BE REPRODUCED OR TRANSMITTED IN ANY FORM OR BY ANY MEANS, ELECTRONIC OR MECHANICAL, INCLUDING PHOTOCOPYING, RECORDING, OR BY ANY INFORMATION STORAGE AND RETRIEVAL SYSTEM. WITHOUT THE WRITTEN PERMISSION OF VIFA, INC. THIS DRAWING IS NOT TO BE USED FOR ANY OTHER PROJECT OR FOR ANY OTHER PURPOSE.

**LESSARD GROUP INC.**  
8511 Leesboro Pk. Dr. 700  
Manassas, VA 20108  
P: 703.790.5344  
F: 703.790.5310  
www.lessardgroup.com

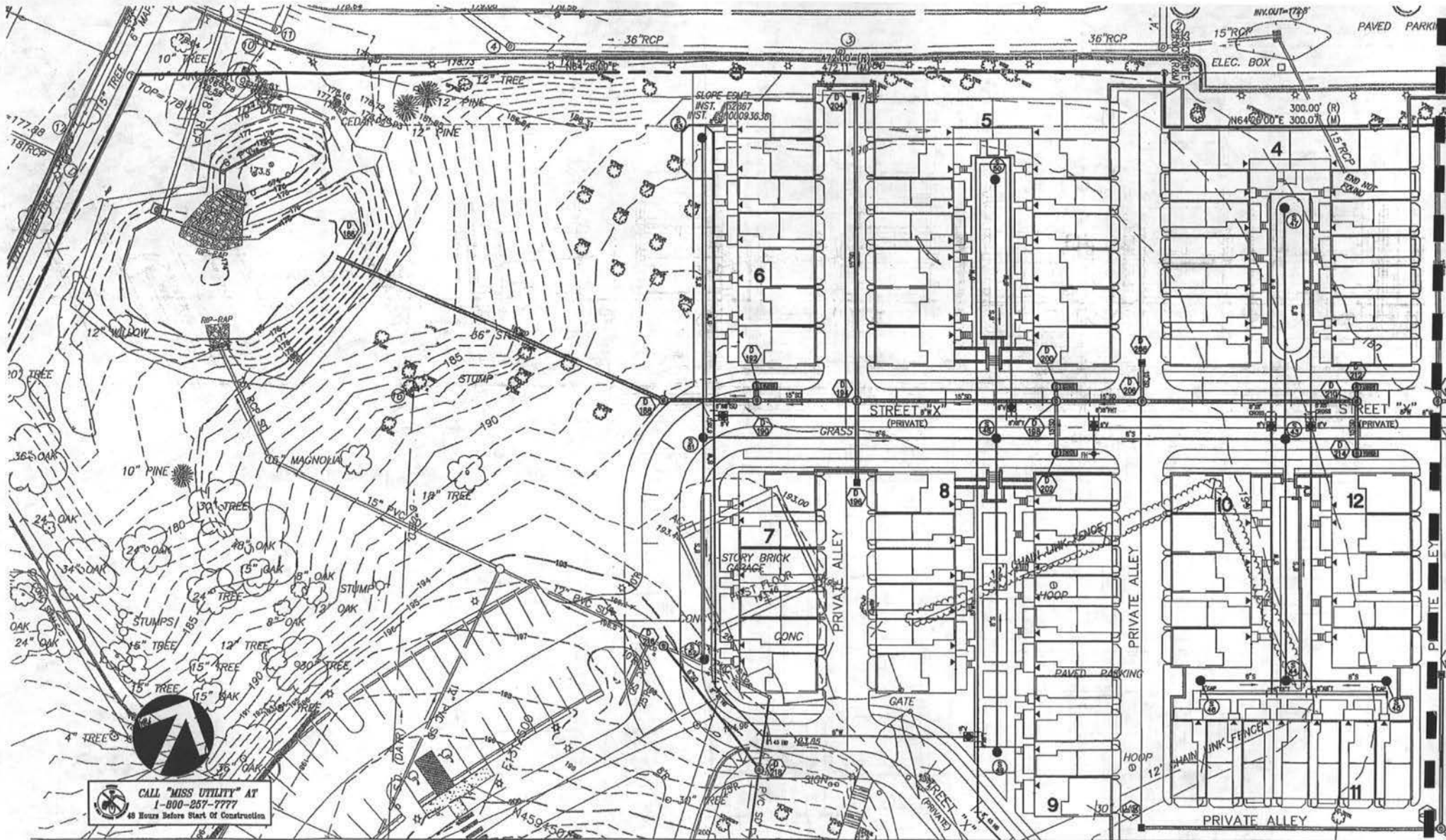
**VIFA**  
VIFA, INC.  
35111 Century Blvd.  
Springfield, VA 22151  
P: 813.816.4500  
F: 813.816.5262  
www.vifa.com

**STUDIO 22**  
8426 Greenbush Dr. Ste. 100-A  
Alexandria, VA 22310  
P: 703.718.6200  
F: 703.718.6203  
www.studio22.com

CALL "MISS UTILITY" AT  
1-800-257-7777  
48 Hours Before Start of Construction



C-18




**CALL "MISS UTILITY" AT**  
**1-800-257-7777**  
 48 Hours Before Start Of Construction

**Saint Paul's College**  
 WASHINGTON, D.C.



**DETAILED WET UTILITY PLAN**

SEPTEMBER 10, 2007

LAYOUT: 18-DETAILED WET UTIL 11x17, Plotted By: Dwyer  
 20:13000-1580\1433\Leaf\p\utility\1433100.dwg - Sep 04, 2007 AT 11:27:21 AM

©2007 LESBARD GROUP INC. ALL RIGHTS RESERVED. THIS DOCUMENT IS THE PROPERTY OF LESBARD GROUP INC. AND IS TO BE USED ONLY FOR THE PROJECT AND SITE SPECIFICALLY IDENTIFIED HEREIN. ANY OTHER USE OF THIS DOCUMENT IS STRICTLY PROHIBITED.

  
**LESBARD GROUP INC.**  
 8331 Leesburg Pike, Ste. 100  
 Fairfax, VA 22031  
 P: 703.500.8344  
 F: 703.500.9326  
 www.lesbard.com

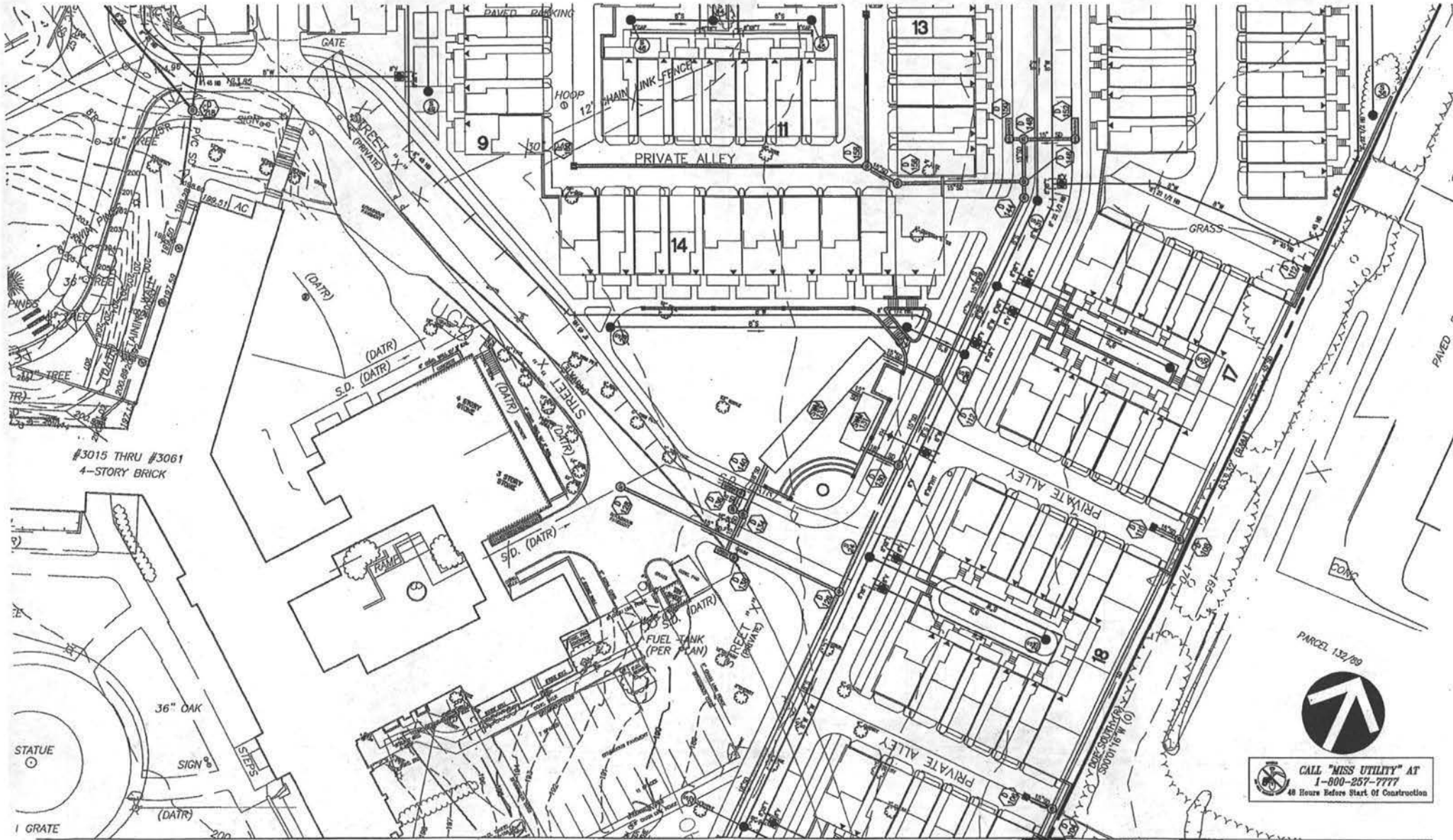
  
**VMA, INC.**  
 20351 Century Blvd.  
 Germantown, MD 20894  
 P: 301.618.4300  
 F: 301.618.3282  
 www.vma.com

  
**STUDIO 39**  
 4416 Greenleaf Dr. Ste. 100-A  
 Alexandria, VA 22304  
 P: 703.715.6300  
 F: 703.715.6305  
 www.studio39.com

1453A



C-19



#3015 THRU #3061  
4-STORY BRICK

36" OAK

FUEL TANK  
(PER PLAN)

PARCEL 1.32/09



CALL "MISS UTILITY" AT  
1-800-257-7777  
48 Hours Before Start Of Construction

Saint Paul's College  
WASHINGTON, D.C.

DETAILED WET UTILITY PLAN

SEPTEMBER 10, 2007



LAYOUT: DD\_DETILED WET UTIL 11x17, Printed By: Gwiler  
R:\V0000-1200\1443\dwg\utility\1453.dwg, -- Sep 05, 2007 AT 11:24:18 AM

LESSARD GROUP INC. EXPRESSLY DISCLAIMS ALL WARRANTIES AND OTHER LIABILITY ARISING FROM THESE PLANS. THESE PLANS ARE NOT TO BE REPRODUCED OR COPIED IN ANY FORM WITHOUT PERMISSION AND ARE TO BE USED ONLY FOR THE PROJECT AND SITE SPECIFICALLY IDENTIFIED ON THESE PLANS. WITHOUT SUCH PERMISSION, ANY REPRODUCTION OR COPIING IS STRICTLY PROHIBITED.

LESSARD GROUP INC.  
8223 Leesburg Pike, Ste. 702  
Vienna, VA 22183  
P: 703.266.8244  
F: 703.266.9132  
www.lessardgroup.com

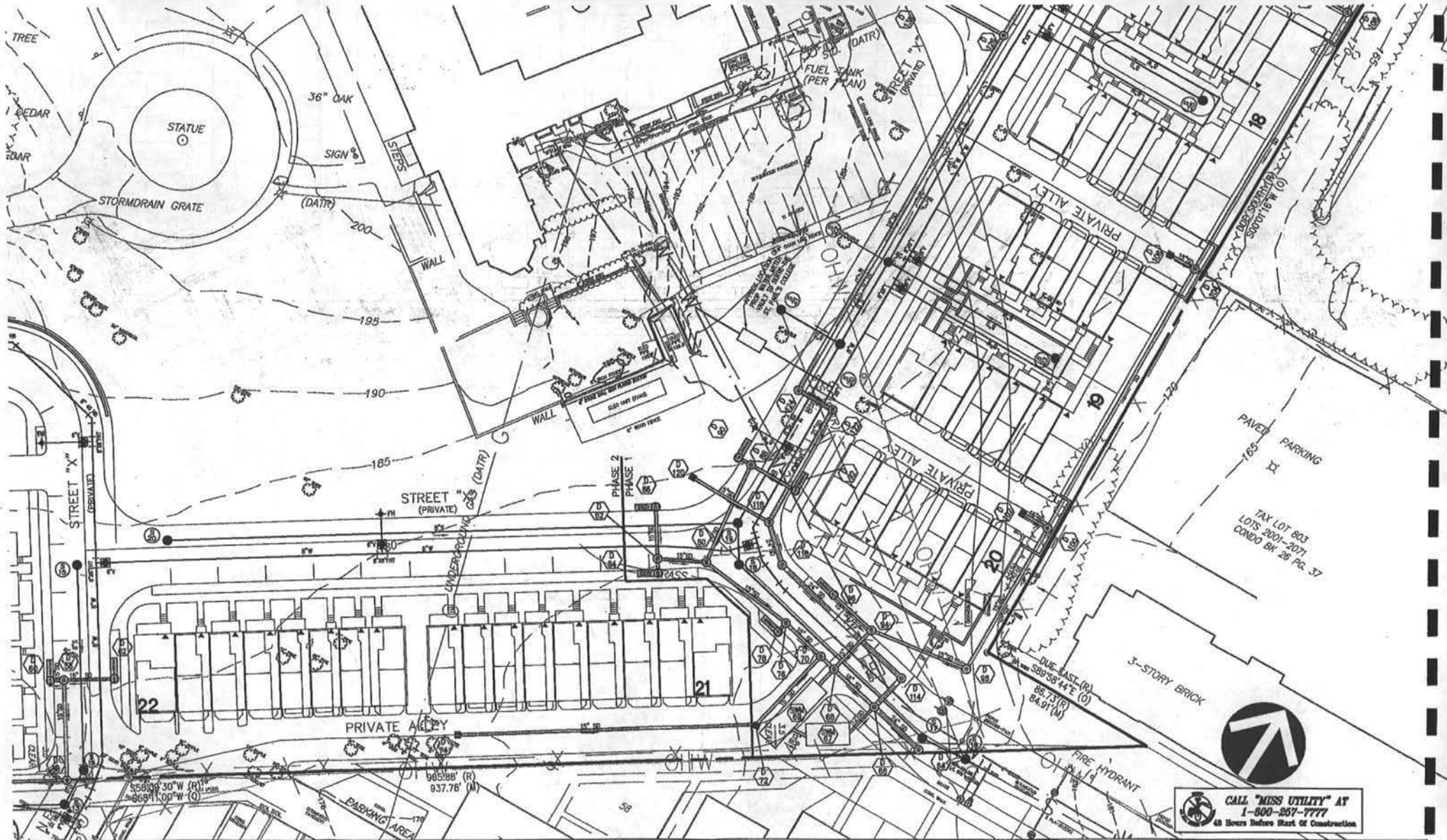
VKA, INC.  
30251 Century Blvd.  
Dorsettown, MD 20891  
P: 301.316.4100  
F: 301.316.3262  
www.vka.com

STUDIO 39  
3416 Greenleaf Dr. Ste. 100-A  
Alexandria, VA 22310  
P: 703.713.6200  
F: 703.713.6800  
www.studio39.com

1453A



C-20



CALL "MISS UTILITY" AT  
 1-800-257-7777  
 48 Hours Before Start of Construction

Saint Paul's College  
 WASHINGTON, D.C.

DETAILED WET UTILITY PLAN

SEPTEMBER 10, 2007



LAYOUT: 01\_DET.WET UTILITY.dwg, Plotted By: Daulton  
 IC:\000-1900\1453\p\01\01\01\1453100.dwg, Sep 04, 2007 AT 11:55:08 AM

©2007 EYANET INC. ALL RIGHTS RESERVED. THIS DOCUMENT IS THE PROPERTY OF EYANET INC. AND IS NOT TO BE REPRODUCED OR TRANSMITTED IN ANY FORM OR BY ANY MEANS, ELECTRONIC OR MECHANICAL, WITHOUT PERMISSION IN WRITING FROM EYANET INC. EYANET INC. IS NOT RESPONSIBLE FOR ANY DAMAGE TO PROPERTY OR PERSONS ARISING FROM THE USE OF THIS PLAN.



LESSARD GROUP INC.  
 8931 Leaning Pk. Ste. 700  
 Vienna, VA 22182  
 P: 703-760-8394  
 F: 703-760-8338  
 www.lessardgroup.com



VIKI INC.  
 20793 Carley Blvd.  
 Germantown, MD 20874  
 P: 301-215-6100  
 F: 301-215-2282  
 www.viki.com

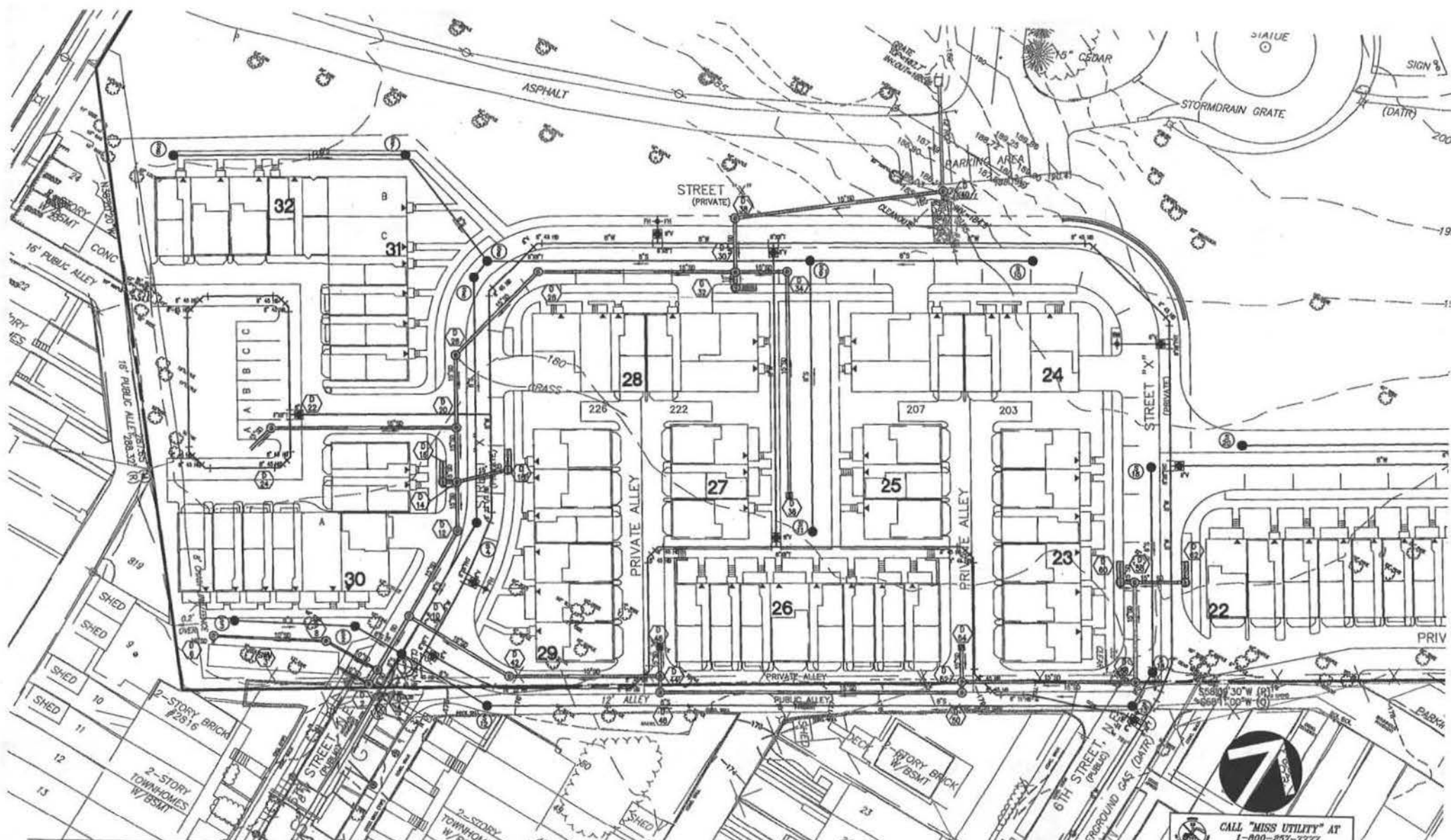


STUDIO 3P  
 6418 Greenleaf Dr. Ste. 100-A  
 Alexandria, VA 22310  
 P: 703-715-0100  
 F: 703-715-0209  
 www.studio3p.com

1453A



C-21



Saint Paul's College  
WASHINGTON, D.C.



LAYOUT: 22-DETAILED WET UTIL. (1st/7), Pulled By: Guler  
11/05/06-1500/4457/and/pend/initial/143300.dwg - On: 06, 2007 At 11:22:53 AM

### DETAILED WET UTILITY PLAN

SEPTEMBER 10, 2007

ALL INFORMATION ON THIS DRAWING IS UNCLASSIFIED EXCEPT WHERE SHOWN OTHERWISE. ANY OTHER TRADEMARKS OR SERVICE MARKS ARE THE PROPERTY OF THEIR RESPECTIVE OWNERS. THIS DRAWING IS NOT TO BE REPRODUCED OR TRANSMITTED IN ANY FORM OR BY ANY MEANS, ELECTRONIC OR MECHANICAL, WITHOUT PERMISSION IN WRITING FROM THE DESIGNER. THE DESIGNER ASSUMES NO LIABILITY FOR ANY DAMAGE TO ANY PROPERTY, MATERIAL OR PERSONS ARISING FROM THE USE OF THIS DRAWING AND ASSUMES NO LIABILITY FOR ANY DAMAGE TO ANY PROPERTY, MATERIAL OR PERSONS ARISING FROM THE USE OF THIS DRAWING.

**LESSARD GROUP INC.**  
8831 Landmark Plaza, Ste. 700  
Wheaton, MD 20852  
P: 703.360.8344  
F: 703.360.8222  
www.lessardgroup.com

**VIFA INC.**  
3881 Century Blvd.  
Spartanburg, SC 29574  
P: 803.834.4100  
F: 803.834.2882  
www.vifa.com

**STUDIO 39**  
4112 Greenway Dr., Ste. 100-A  
Alexandria, VA 22313  
P: 703.326.6500  
F: 703.724.8820  
www.studio39.com

CALL "MISS UTILITY" AT  
1-800-257-7777  
48 Hours Before Start Of Construction

1453A



C-22