

Saint Paul's College  
WASHINGTON, D.C.

THE NEIGHBORHOODS OF  
**EYA**

**PUBLIC PARK**

SEPTEMBER 10, 2007



**LESSARD GROUP INC.**  
8221 Leeburg Pike, Ste. 100  
Arlington, VA 22203  
P: 703.780.6344  
F: 703.780.6028  
www.lessardgroup.com



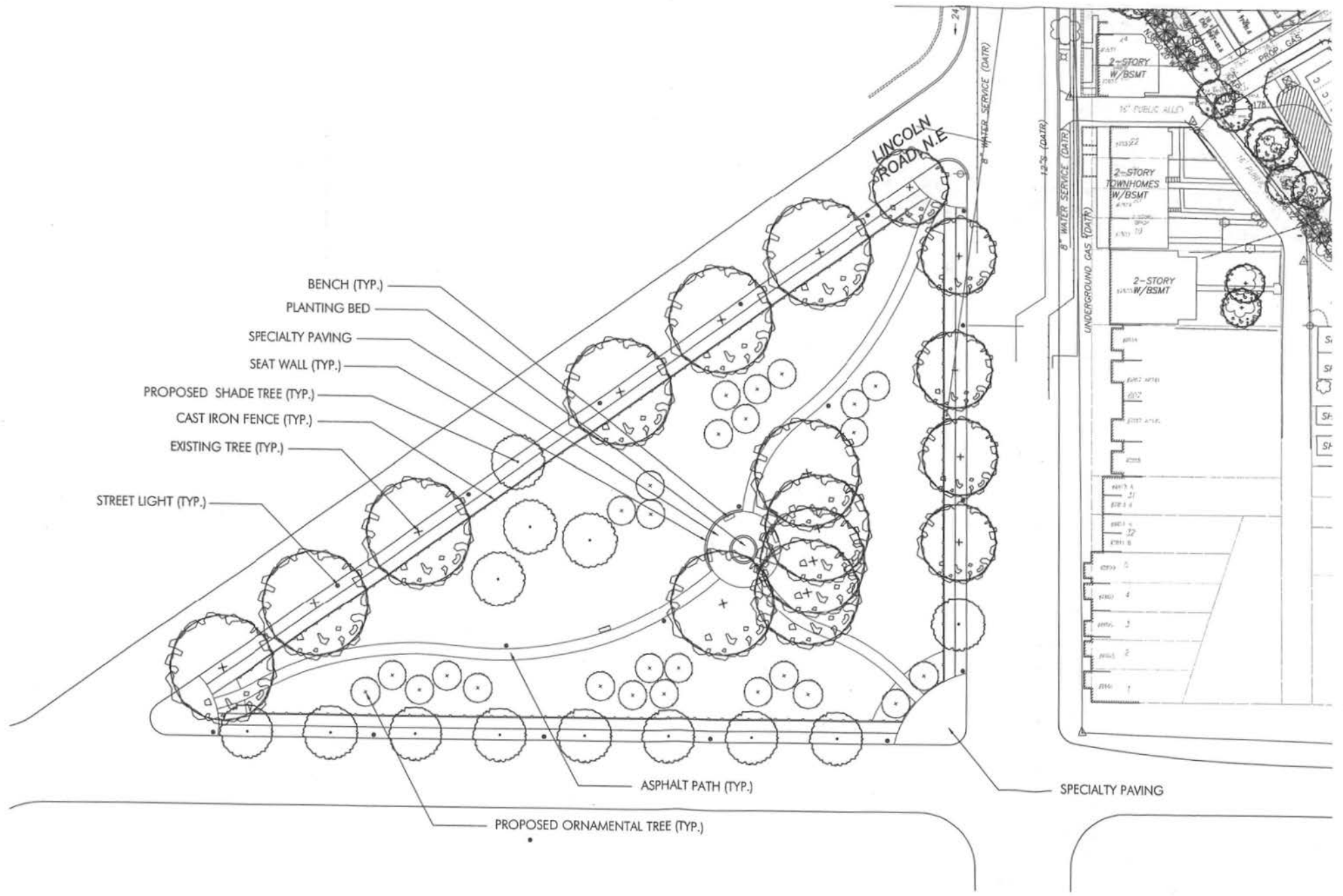
**VIKA, INC.**  
3225 Century Blvd.  
Glenview, MD 20889  
P: 301.818-4100  
F: 301.818-2942  
www.vika.com



**STUDIO 39**  
3918 Greenleaf Dr. Ste. 100  
Arlington, VA 22204  
P: 703.719.8200  
F: 703.719.8202  
www.studio39.com

**ZONING COMMISSION**  
District of Columbia  
CASE NO. 07-27  
EXHIBIT NO. 4E

L1.04



- BENCH (TYP.)
- PLANTING BED
- SPECIALTY PAVING
- SEAT WALL (TYP.)
- PROPOSED SHADE TREE (TYP.)
- CAST IRON FENCE (TYP.)
- EXISTING TREE (TYP.)
- STREET LIGHT (TYP.)

ASPHALT PATH (TYP.)

PROPOSED ORNAMENTAL TREE (TYP.)

SPECIALTY PAVING

LINCOLN ROAD N.E.

8" WATER SERVICE (DATE)

12" GAS (DATE)

8" WATER SERVICE (DATE)

UNDERGROUND GAS (DATE)

2-STORY TOWNHOMES W/BSMT

2-STORY TOWNHOMES W/BSMT

2-STORY TOWNHOMES W/BSMT

2-STORY TOWNHOMES W/BSMT

2-STORY TOWNHOMES W/BSMT

2-STORY TOWNHOMES W/BSMT

2-STORY TOWNHOMES W/BSMT

2-STORY TOWNHOMES W/BSMT

2-STORY TOWNHOMES W/BSMT

2-STORY TOWNHOMES W/BSMT

2-STORY TOWNHOMES W/BSMT

2-STORY TOWNHOMES W/BSMT

2-STORY TOWNHOMES W/BSMT