

RECEIVED
D.C. OFFICE OF ZONING
2007 SEP 17 PM 3:32

RANDALL SCHOOL
65 EYE STREET, SW WASHINGTON, DC
A PLANNED UNIT DEVELOPMENT
CONCEPT PLANS FOR PUD AMENDMENT
SEPTEMBER 17, 2007

OWNER: THE CORCORAN GALLERY OF ART
DEVELOPER: MR RANDALL CAPITAL LLC
ARCHITECT: SHALOM BARANES ASSOCIATES
LANDSCAPE ARCHITECT: OCULUS
LAND USE COUNSEL: HOLLAND & KNIGHT
CIVIL ENGINEER: BOHLER ENGINEERING, P.C.

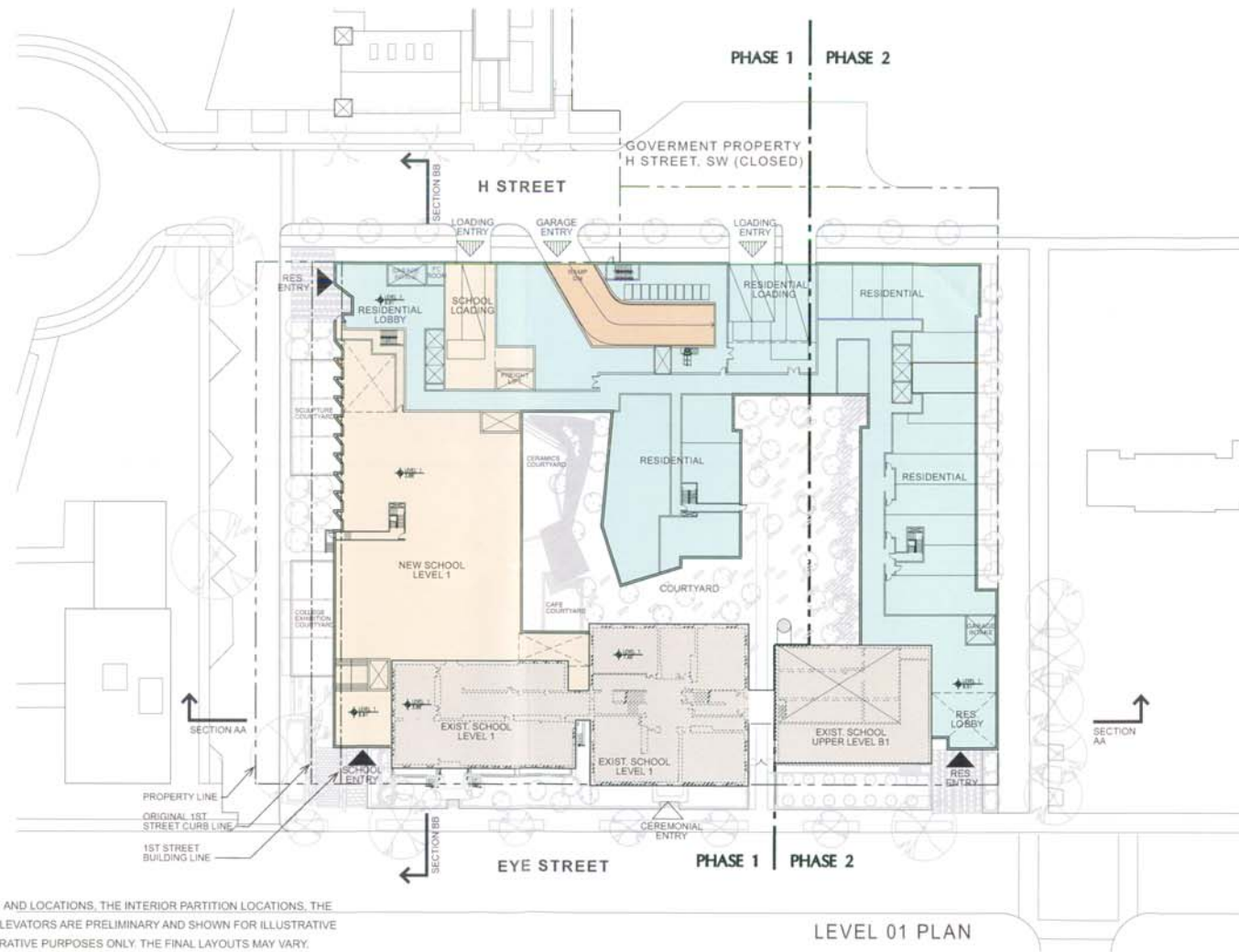
DRAWING INDEX		FILING REQUIREMENTS (DCMR 11)
SHEET	TITLE	ZONING REFERENCE
--	COVER SHEET	--
A1	LEVEL 01 PLAN	2406.12 (e) & (f)
A3	LEVEL 05 & LEVEL 06 (TYP.) PLANS	2406.12 (e)
A8	SOUTH ELEVATION	2406.12 (e)
A12	NORTH ELEVATION	2406.12 (e)
A16	BUILDING SECTION	2406.12 (e)
A22a	H STREET VIEWS	--
A26	I STREET VIEWS	--

RECEIVED
D.C. OFFICE OF ZONING
2007 SEP 17 PM 3:35

ZONING COMMISSION
District of Columbia
CASE NO. 07-13
EXHIBIT NO. 32

RANDALL SCHOOL

shalom baranes associates architects



NOTES:

1. THE EXTERIOR ELEVATIONS, INCLUDING DOOR AND WINDOW SIZES AND LOCATIONS, THE INTERIOR PARTITION LOCATIONS, THE NUMBER, SIZE, AND LOCATIONS OF RESIDENTIAL UNITS, STAIRS AND ELEVATORS ARE PRELIMINARY AND SHOWN FOR ILLUSTRATIVE PURPOSES ONLY. THE PARKING SPACE LAYOUT IS SHOWN FOR ILLUSTRATIVE PURPOSES ONLY. THE FINAL LAYOUTS MAY VARY.
2. REFER TO SHEET L1 FOR LANDSCAPE PLAN.
3. REFER TO SHEET A5 (ROOF LEVEL) FOR BUILDING DIMENSIONS.

RANDALL SCHOOL

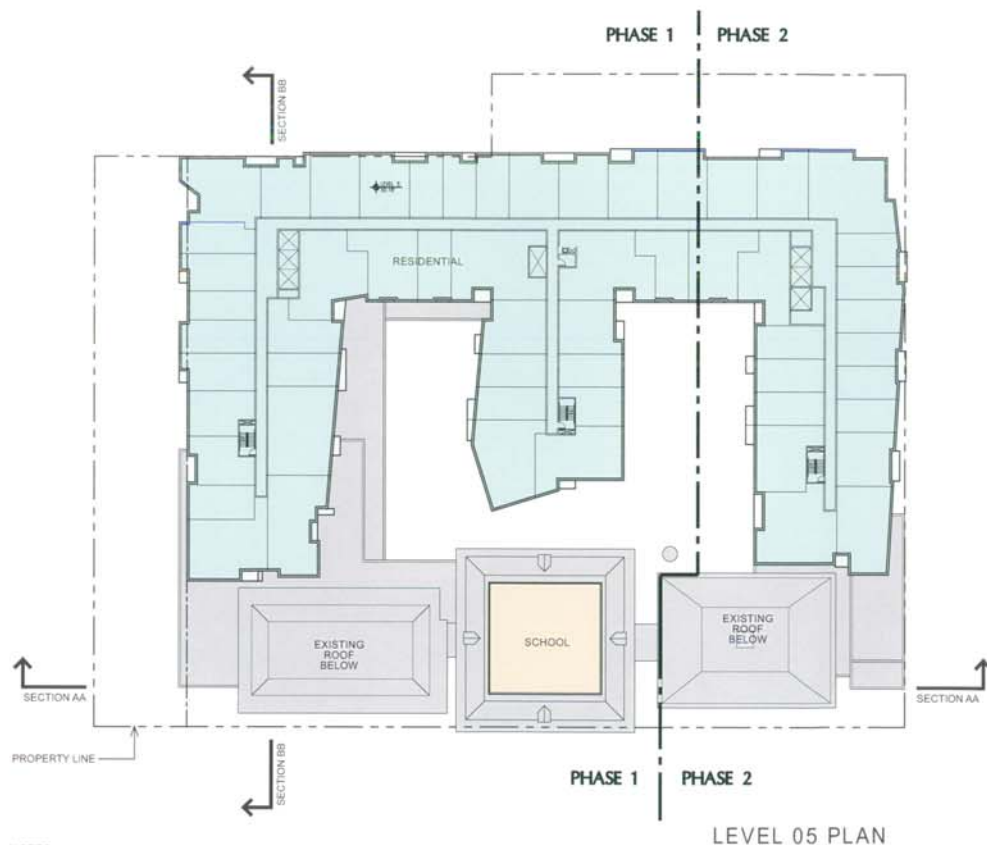
65 EYE STREET SW, WASHINGTON, DC | September 17, 2007 | ©2007 Shalom Baranes Associates, P.C.



PUD AMENDMENT

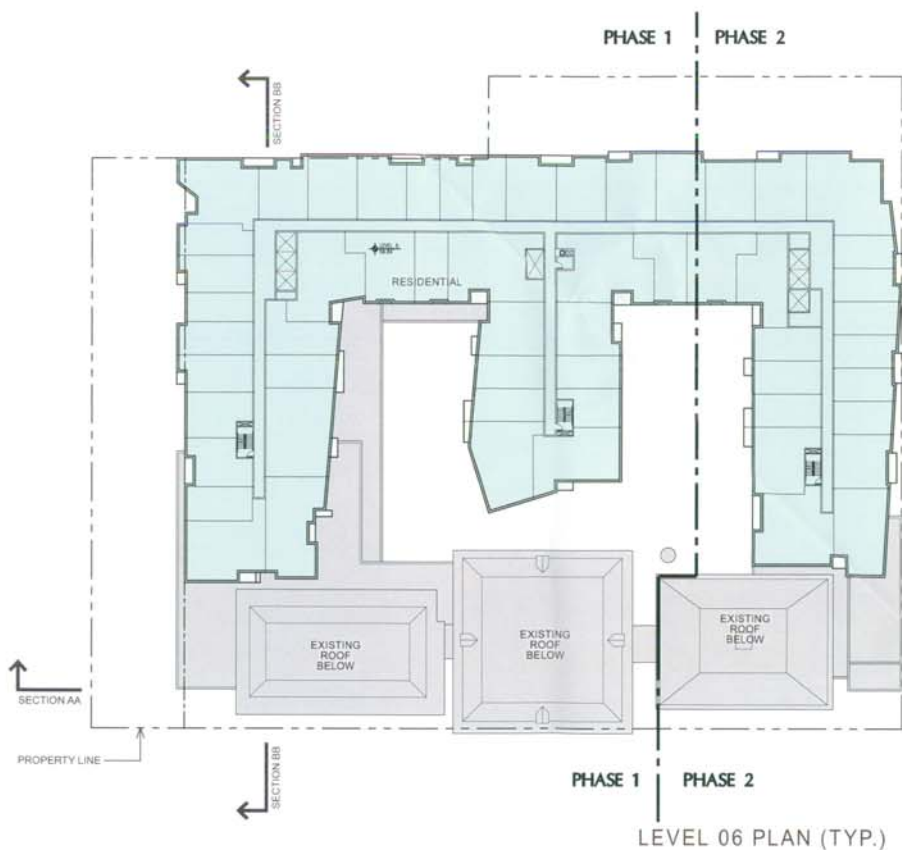
shalom baranes associates architects

LEVEL 01 PLAN A1



NOTES:

1. THE EXTERIOR ELEVATIONS, INCLUDING DOOR AND WINDOW SIZES AND LOCATIONS, THE INTERIOR PARTITION LOCATIONS, THE NUMBER, SIZE, AND LOCATIONS OF RESIDENTIAL UNITS, STAIRS AND ELEVATORS ARE PRELIMINARY AND SHOWN FOR ILLUSTRATIVE PURPOSES ONLY. THE PARKING SPACE LAYOUT IS SHOWN FOR ILLUSTRATIVE PURPOSES ONLY. THE FINAL LAYOUTS MAY VARY.
2. REFER TO SHEET L1 FOR LANDSCAPE PLAN.
3. REFER TO SHEET A5 (ROOF LEVEL) FOR BUILDING DIMENSIONS.



RANDALL SCHOOL

65 EYE STREET SW, WASHINGTON, DC | September 17, 2007 | ©2007 Shalom Baranes Associates, P.C.



PUD AMENDMENT

shalom baranes associates

architects

LEVEL 05 & LEVEL 06 (TYP.) PLANS

A3



NOTES:

1. THE EXTERIOR ELEVATIONS, INCLUDING DOOR AND WINDOW SIZES AND LOCATIONS, THE INTERIOR PARTITION LOCATIONS, THE NUMBER, SIZE, AND LOCATIONS OF RESIDENTIAL UNITS, STAIRS AND ELEVATORS ARE PRELIMINARY AND SHOWN FOR ILLUSTRATIVE PURPOSES ONLY. THE PARKING SPACE LAYOUT IS SHOWN FOR ILLUSTRATIVE PURPOSES ONLY. THE FINAL LAYOUTS MAY VARY.
2. REFER TO SHEET L1 FOR LANDSCAPE PLAN.
3. REFER TO SHEET A5 (ROOF LEVEL) FOR BUILDING DIMENSIONS.
4. REFER TO SHEETS A9 AND A10 FOR TYPICAL MATERIAL NOTATION.

RANDALL SCHOOL

65 EYE STREET SW, WASHINGTON, DC | September 17, 2007 | ©2007 Shalom Baranes Associates, P.C.

0' 15' 30'

PUD AMENDMENT

shalom baranes associates architects

SOUTH ELEVATION A8



NOTES:

1. THE EXTERIOR ELEVATIONS, INCLUDING DOOR AND WINDOW SIZES AND LOCATIONS, THE INTERIOR PARTITION LOCATIONS, THE NUMBER, SIZE, AND LOCATIONS OF RESIDENTIAL UNITS, STAIRS AND ELEVATORS ARE PRELIMINARY AND SHOWN FOR ILLUSTRATIVE PURPOSES ONLY. THE PARKING SPACE LAYOUT IS SHOWN FOR ILLUSTRATIVE PURPOSES ONLY. THE FINAL LAYOUTS MAY VARY.
2. REFER TO SHEET L1 FOR LANDSCAPE PLAN.
3. REFER TO SHEET A5 (ROOF LEVEL) FOR BUILDING DIMENSIONS.
4. REFER TO SHEETS A9 AND A10 FOR TYPICAL MATERIAL NOTATION.

RANDALL SCHOOL

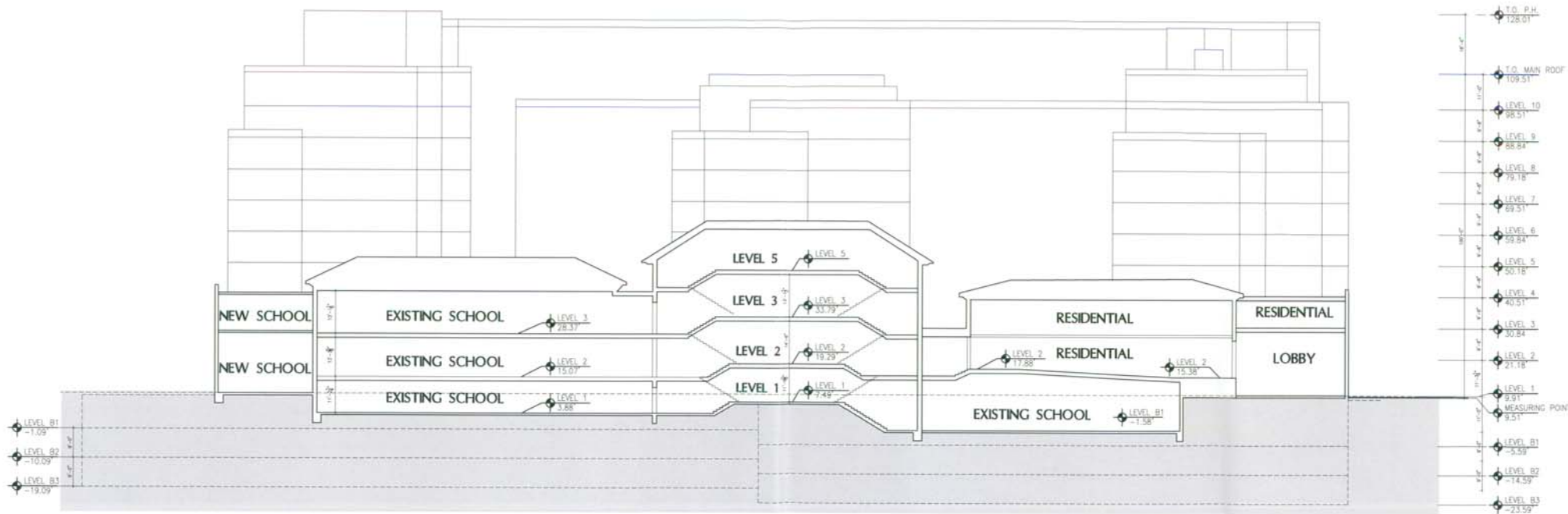
65 EYE STREET SW, WASHINGTON, DC | September 17, 2007 | ©2007 Shalom Baranes Associates, P.C.

0' 15' 30'

PUD AMENDMENT

shalom baranes associates architects

NORTH ELEVATION A12



SECTION AA

- NOTES:
1. THE EXTERIOR ELEVATIONS, INCLUDING DOOR AND WINDOW SIZES AND LOCATIONS, THE INTERIOR PARTITION LOCATIONS, THE NUMBER, SIZE, AND LOCATIONS OF RESIDENTIAL UNITS, STAIRS AND ELEVATORS ARE PRELIMINARY AND SHOWN FOR ILLUSTRATIVE PURPOSES ONLY. THE PARKING SPACE LAYOUT IS SHOWN FOR ILLUSTRATIVE PURPOSES ONLY. THE FINAL LAYOUTS MAY VARY.
 2. REFER TO SHEET L1 FOR LANDSCAPE PLAN.
 3. REFER TO SHEET A5 (ROOF LEVEL) FOR BUILDING DIMENSIONS.



RANDALL SCHOOL

65 EYE STREET SW, WASHINGTON, DC | September 17, 2007 | ©2007 Shalom Baranes Associates, P.C.

0' 15' 30'

PUD AMENDMENT

shalom baranes associates architects

BUILDING SECTION A16



H STREET VIEW LOOKING EAST



H STREET VIEW LOOKING EAST - REVISED

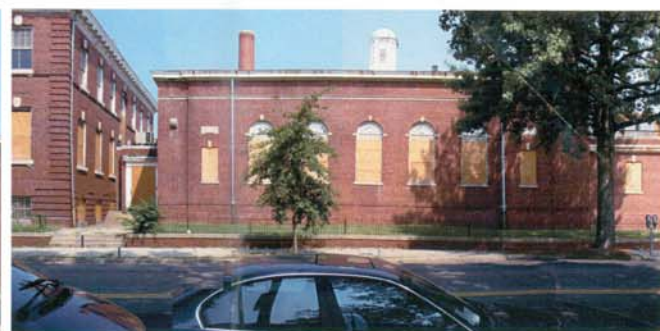
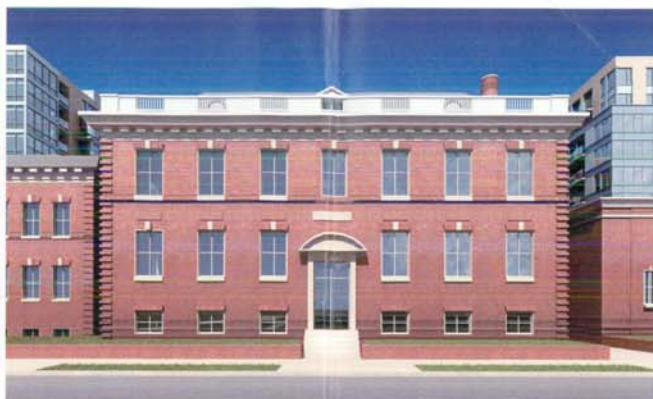
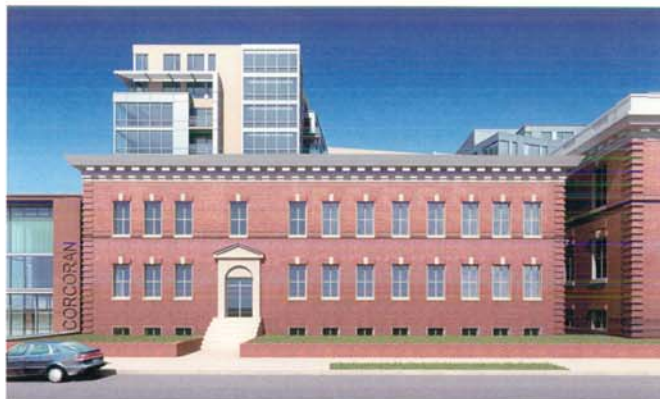
RANDALL SCHOOL

65 EYE STREET SW, WASHINGTON, DC | September 17, 2007 | ©2007 Shalom Baranes Associates, P.C.

PUD AMENDMENT

shalom baranes associates | architects

H STREET VIEWS | A22a



RANDALL SCHOOL

65 EYE STREET SW, WASHINGTON, DC | September 17, 2007 | ©2007 Shalom Baranes Associates, P.C.

PUD AMENDMENT

shalom baranes associates architects

I STREET VIEWS A26