

SEWER STRUCTURE SCHEDULE - SEPARATE STORM DRAIN SYSTEM

STREET NAME	STRUCTURE #	WATER DIA.	TYPE	TOP ELEVATION	STRUCTURE LOCATION	REMARKS
				UPPER LOWER	CL. STATION OFFSET	
OVERALL FROM US	EW 1	DA	MS	1+50.00	2+00.00	0+01/214.02
05	M02	5' DIA	MS	1+88.68	00 CL	DC-WASA DETAIL NO. SW070.02
05	M03	6' DIA	MS	2+74.90	7'0' LT	DC-WASA DETAIL NO. SW070.01
05	1-4	2' - 6" GRATE CATCH BASIN*		4+71.90	00 CL	DC-WASA DETAIL NO. SW070.31
05	M05	5' DIA	MS	4+71.90	5'0' RT	DC-WASA DETAIL NO. SW070.02
05	M06	5' DIA	MS	5+82.56	5'0' RT	DC-WASA DETAIL NO. SW070.02
07	M07	6' DIA	MS	1+34.63	8'0' RT	DC-WASA DETAIL NO. SW070.01
07	M08	6' DIA	MS	4+95.01	5'0' RT	DC-WASA DETAIL NO. SW070.01
07	U7	2' - 6" GRATE CATCH BASIN*		4+99.42	00 CL	DC-WASA DETAIL NO. SW070.31
07	M09	6' DIA	MS	2+12.48	11'0' LT	DC-WASA DETAIL NO. SW070.01
07	T3	6' DIA	MS	3+54.75	24'0' LT	DC-WASA DETAIL NO. SW070.01
07	1-12	2' - 6" GRATE CATCH BASIN*		2+22.50	00 CL	DC-WASA DETAIL NO. SW070.31
07	1-13	2' - 6" GRATE CATCH BASIN*		3+50.75	12'5' LT	DC-WASA DETAIL NO. SW070.01
07	M11	6' DIA	MS	1+76.13	11'10' LT	DC-WASA DETAIL NO. SW070.01
07	1-15	2' - 6" GRATE CATCH BASIN*		1+83.44	00 CL	DC-WASA DETAIL NO. SW070.31
07	1-16	2' - 6" GRATE CATCH BASIN*		1+50.64	12'5' RT	DC-WASA DETAIL NO. SW070.01
ANACOSTIA AVENUE	M017	5' DIA	MS			DC-WASA DETAIL NO. SW070.02
01	M018	6' DIA	MS			DC-WASA DETAIL NO. SW070.01
ANACOSTIA AVENUE	M019	6' DIA	MS			DC-WASA DETAIL NO. SW070.01
ANACOSTIA AVENUE	M020	6' DIA	MS			DC-WASA DETAIL NO. SW070.01
04	1-21	2' - 6" GRATE CATCH BASIN*				DC-WASA DETAIL NO. SW070.31
01	M022	6' DIA	MS			DC-WASA DETAIL NO. SW070.01
01	1-23	2' - 6" GRATE CATCH BASIN*				DC-WASA DETAIL NO. SW070.31
01	1-24	2' - 6" GRATE CATCH BASIN*				DC-WASA DETAIL NO. SW070.01
01	M025	6' DIA	MS			DC-WASA DETAIL NO. SW070.01
03	M026	6' DIA	MS			DC-WASA DETAIL NO. SW070.01
03	1-27	2' - 6" GRATE CATCH BASIN*				DC-WASA DETAIL NO. SW070.31
03	1-28	2' - 6" GRATE CATCH BASIN*				DC-WASA DETAIL NO. SW070.31
HAYES ROAD	1-29	2' - 6" GRATE CATCH BASIN*				DC-WASA DETAIL NO. SW070.01
HAYES ROAD	M030	6' DIA	MS			DC-WASA DETAIL NO. SW070.01
HAYES ROAD	1-31	2' - 6" GRATE CATCH BASIN*				DC-WASA DETAIL NO. SW070.01
HAYES ROAD	1-32	2' - 6" GRATE CATCH BASIN*				DC-WASA DETAIL NO. SW070.01
ANACOSTIA AVENUE	M033	6' DIA	MS			DC-WASA DETAIL NO. SW070.01
ANACOSTIA AVENUE	M034	6' DIA	MS			DC-WASA DETAIL NO. SW070.01
ANACOSTIA AVENUE	1-35	2' - 6" GRATE CATCH BASIN*				DC-WASA DETAIL NO. SW070.01
ANACOSTIA AVENUE	1-36	2' - 6" GRATE CATCH BASIN*				DC-WASA DETAIL NO. SW070.31
07	M037	6' DIA	MS	2+22.50	11'00' LT	DC-WASA DETAIL NO. SW070.01
05	M038	6' DIA	MS	1+22.50	11'00' LT	DC-WASA DETAIL NO. SW070.01
05	M039	6' DIA	MS	4+02.50	11'00' LT	DC-WASA DETAIL NO. SW070.01
05	1-4	2' - 6" GRATE CATCH BASIN*		4+71.90	00 CL	DC-WASA DETAIL NO. SW070.31

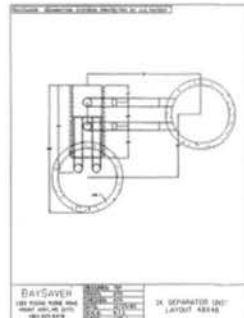
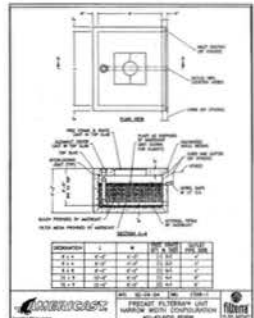
* MODIFIED WITH 18" DEEP CATCHMENT AND TURNED DOWN OUTLET PIPE, FOR PRE-TREATMENT.

ALL WORK WILL BE IN COMPLIANCE TO THE DC DOH WATERSHED PROTECTION DIVISION STORM WATER MANAGEMENT GUIDEBOOK, APRIL 2003.



GREENHORNE & O'MARA STORM DRAIN AND STORMWATER MANAGEMENT PLAN

POLLIN MEMORIAL DEVELOPMENT TEAM
GREENHORNE & O'MARA



DAY & NIGHT
1000 GREENHORN ROAD
NORTH WOOD COUNTY, OHIO 43084

3/4" SEPARATOR UNIT
LAYOUT 4/24/04

ZONING COMMISSION
District of Columbia
CASE NO. 06-30
EXHIBIT NO. 41

S20
ZONING COMMISSION
District of Columbia
CASE NO. 06-30
EXHIBIT NO. 41

LINDA JOY & KENNETH JAY POLLIN MEMORIAL COMMUNITY