

# APPENDIX



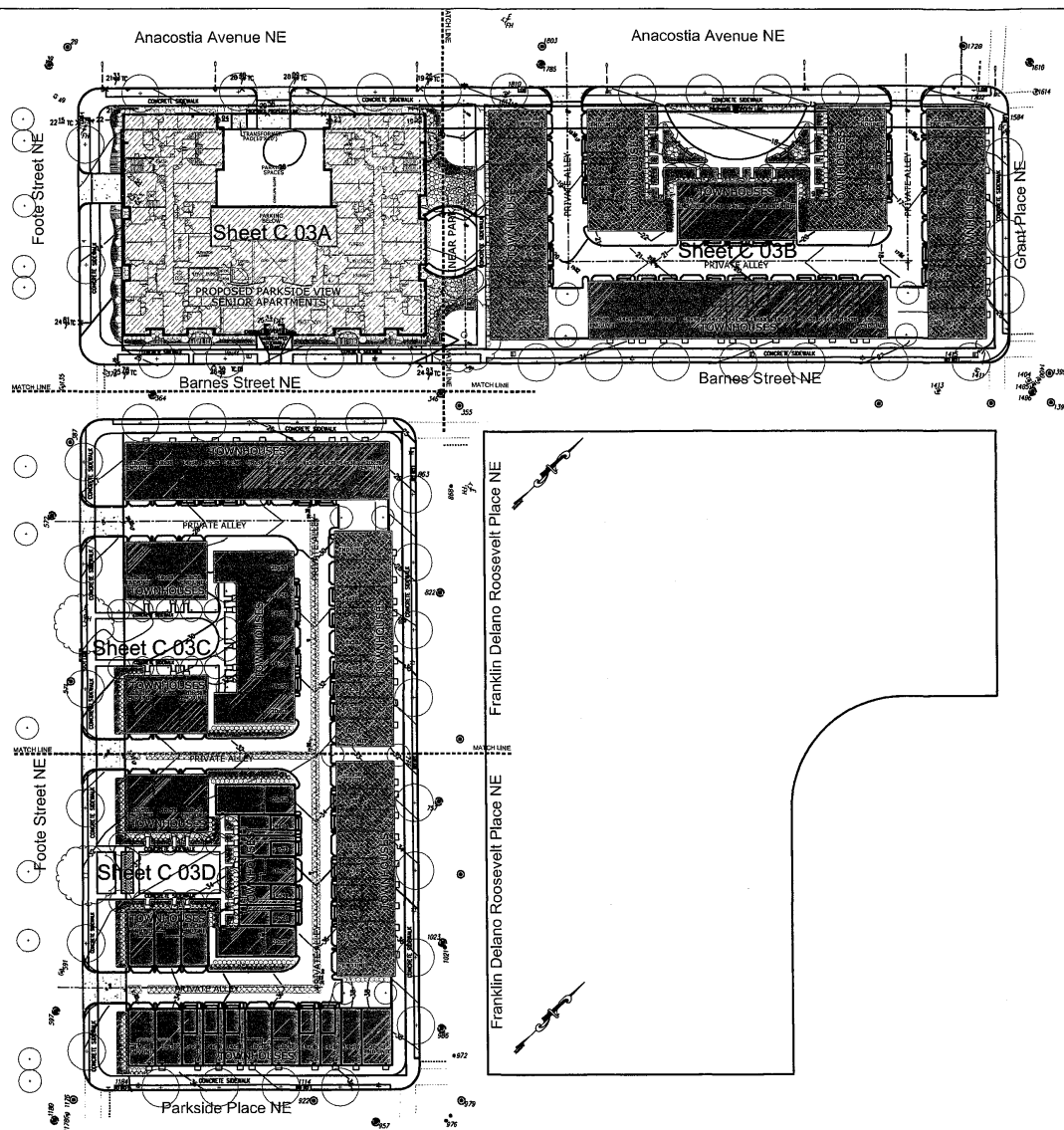
PARKSIDE

March 2008

RECEIVED  
D.C. OFFICE OF ZONING  
2008 MAR 27 PM 3:34

ZONING COMMISSION  
District of Columbia

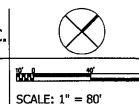
CASE NO. 05-28A  
EXHIBIT NO. 14



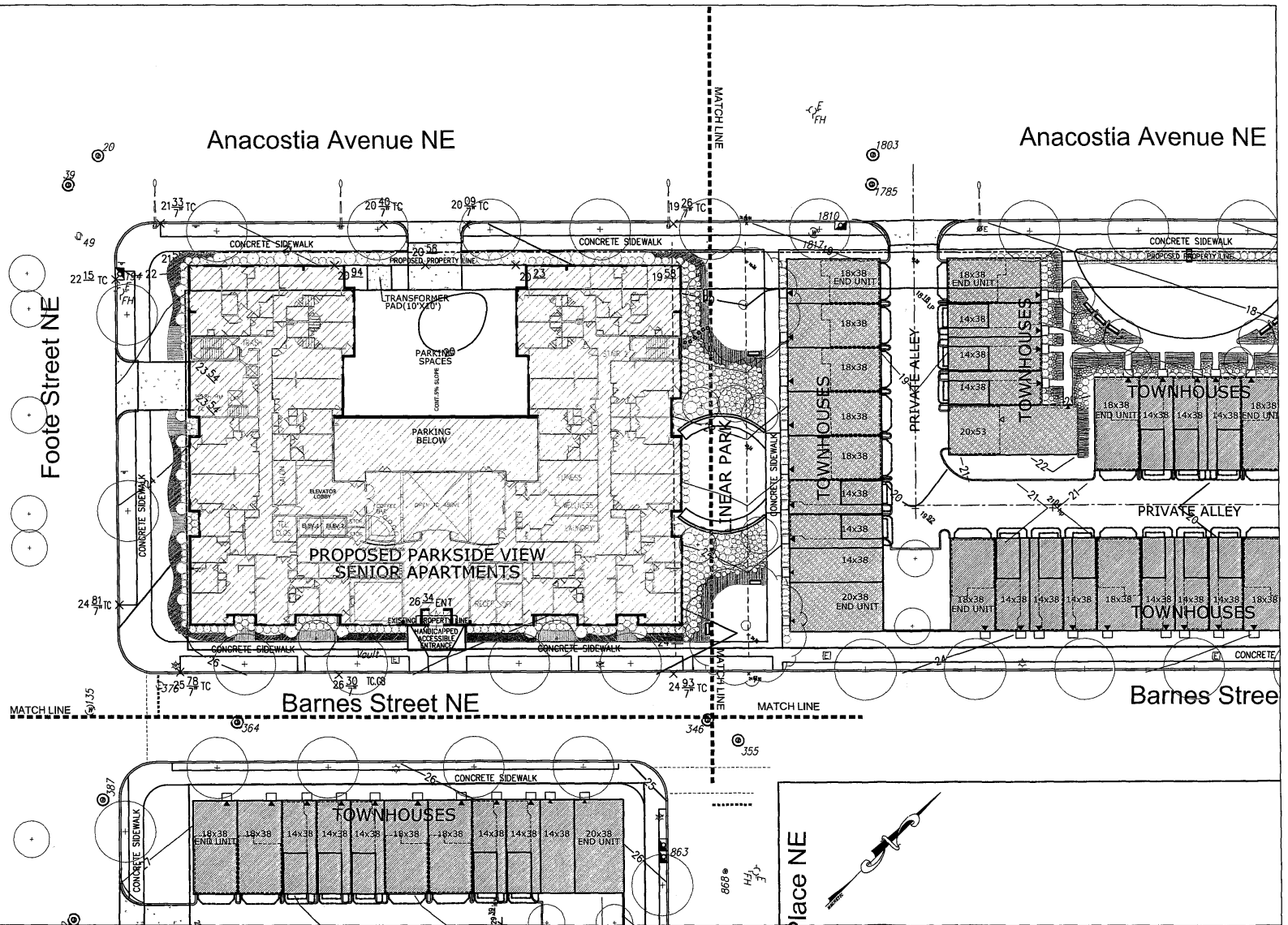
## Over-all Grading Plan

March 24, 2008

PARKSIDE AT  
 WASHINGTON D.C.



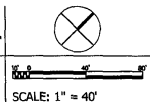
C.03



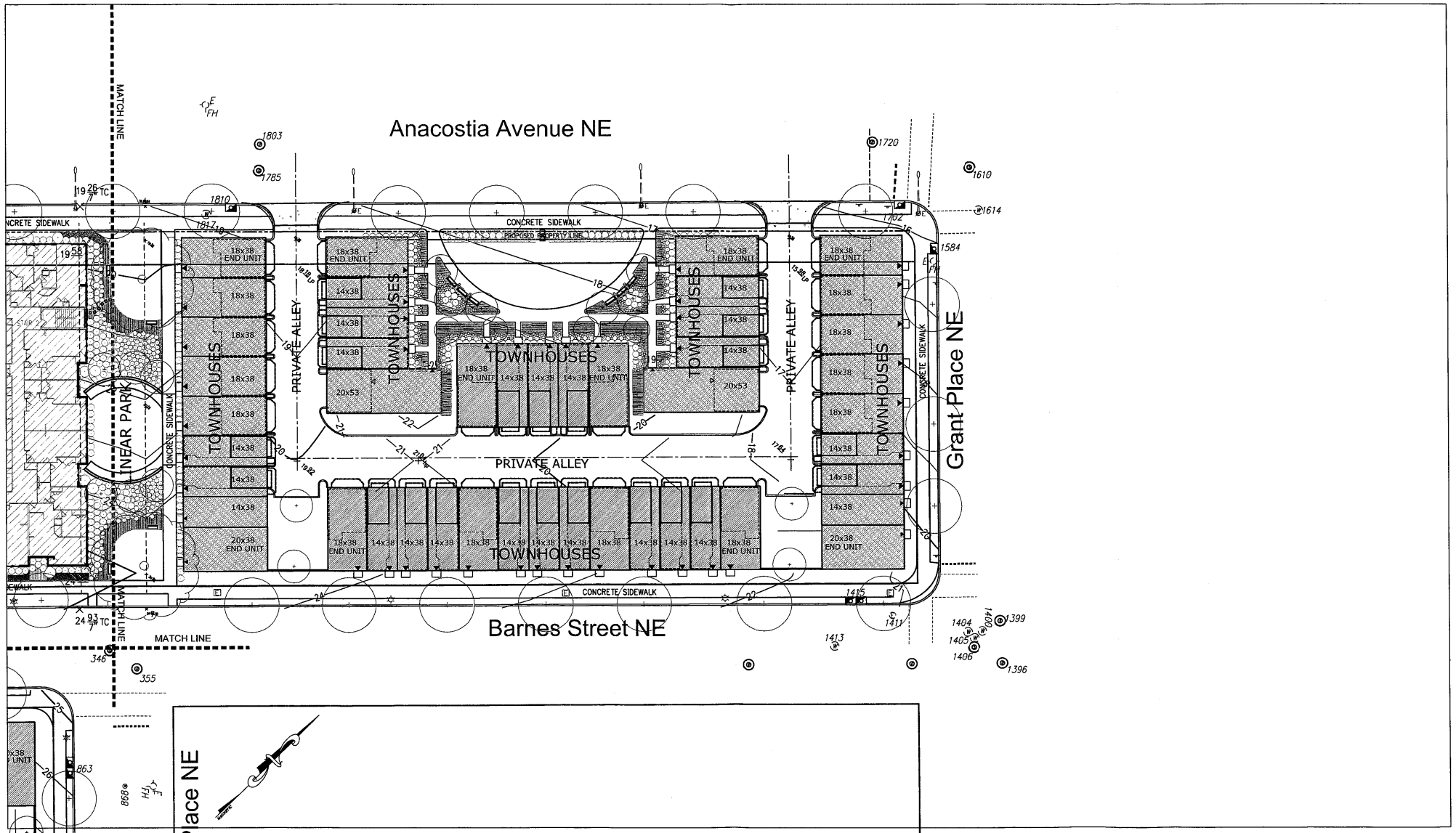
## Grading Plan

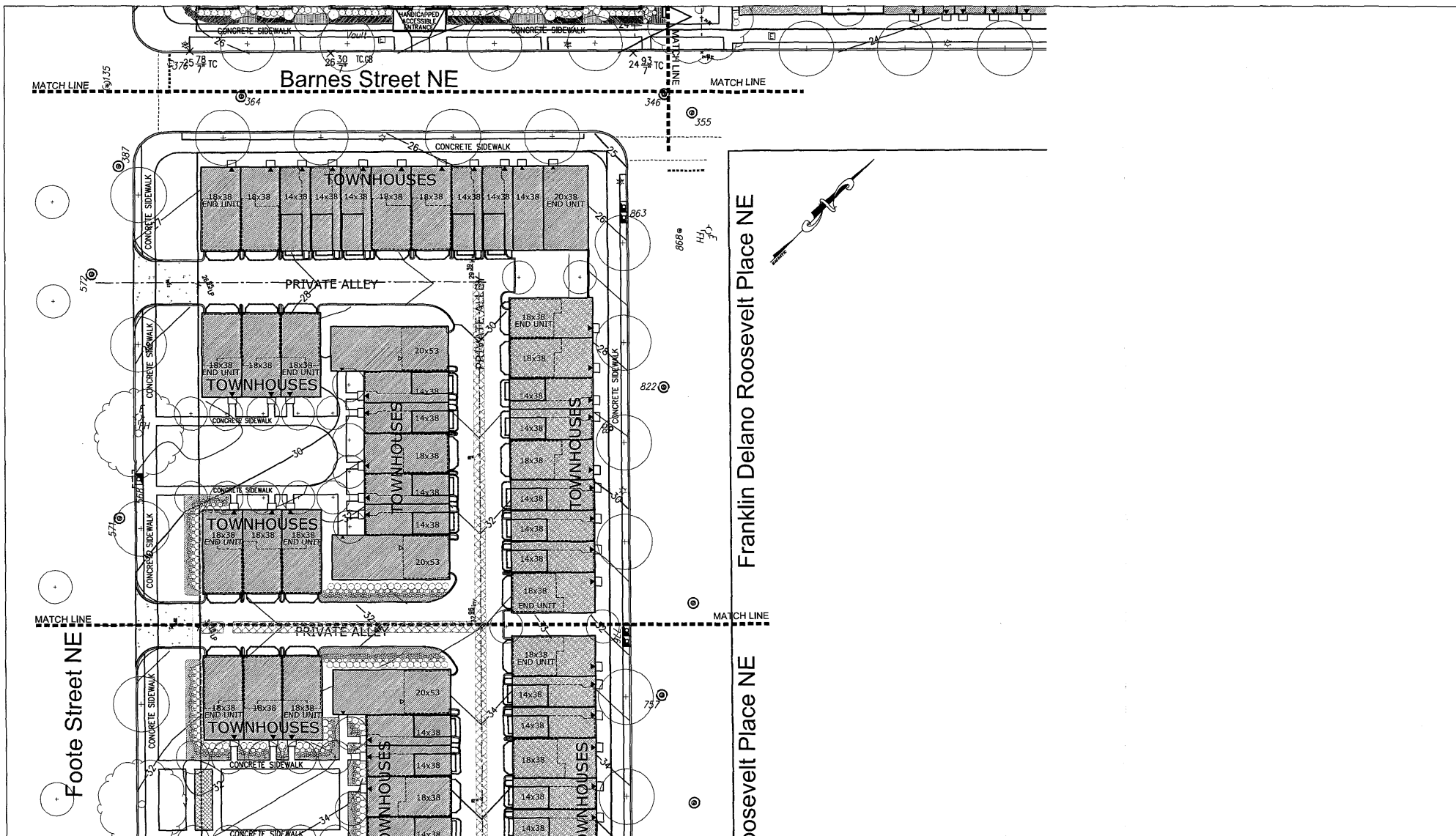
March 24, 2008

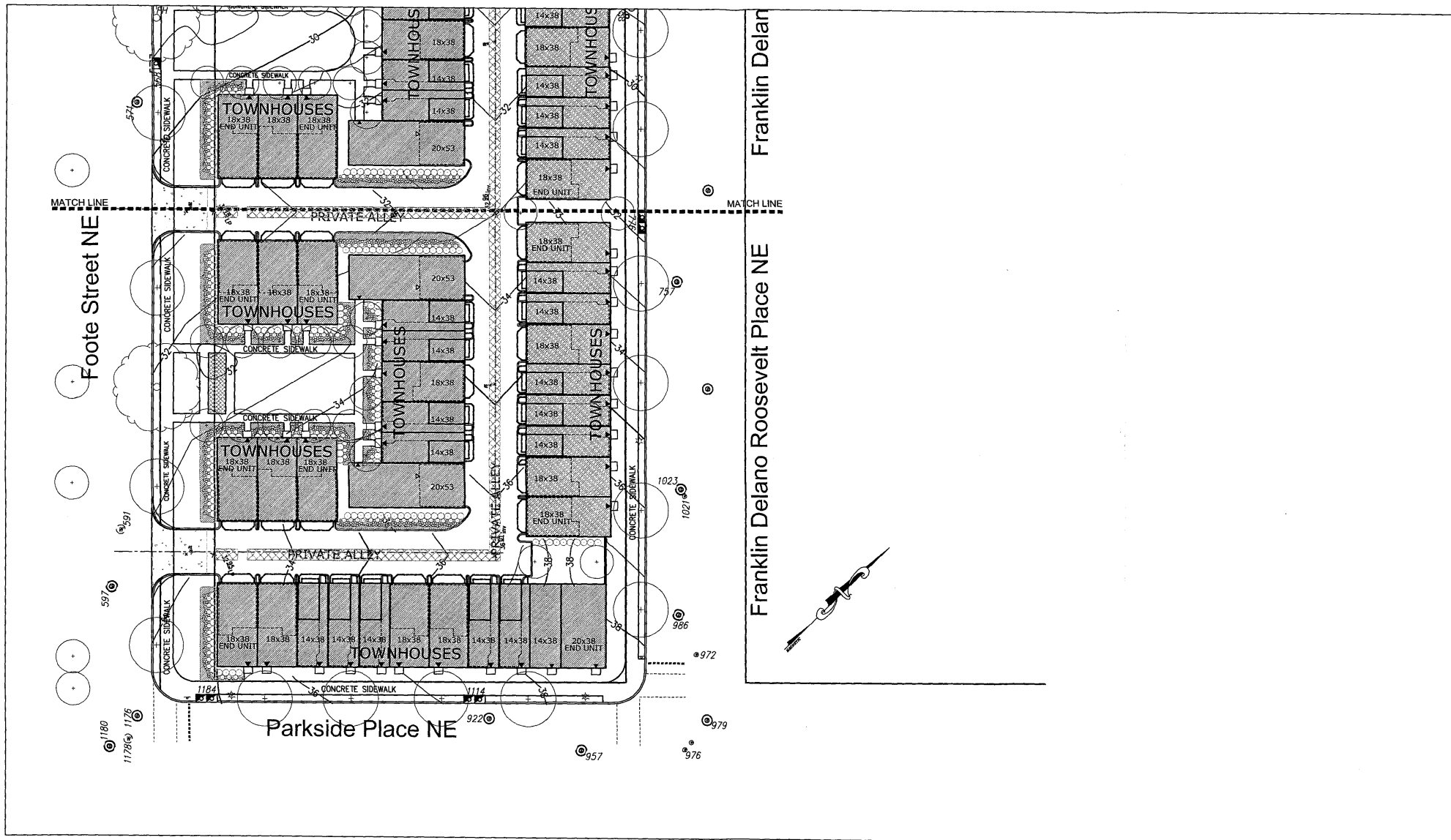
PARKSIDE AT  
WASHINGTON D.C.



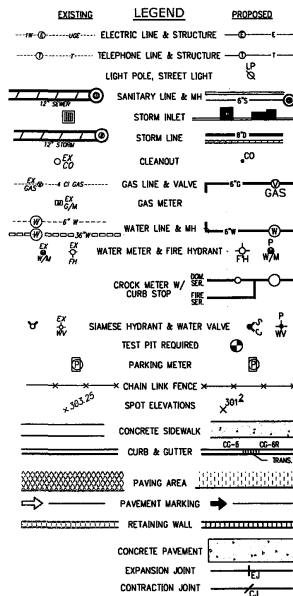
C.03A











**AVERAGE DAILY WATER DEMAND AND SEWAGE FLOW:**

**PARKSIDE SENIOR HOUSING:**

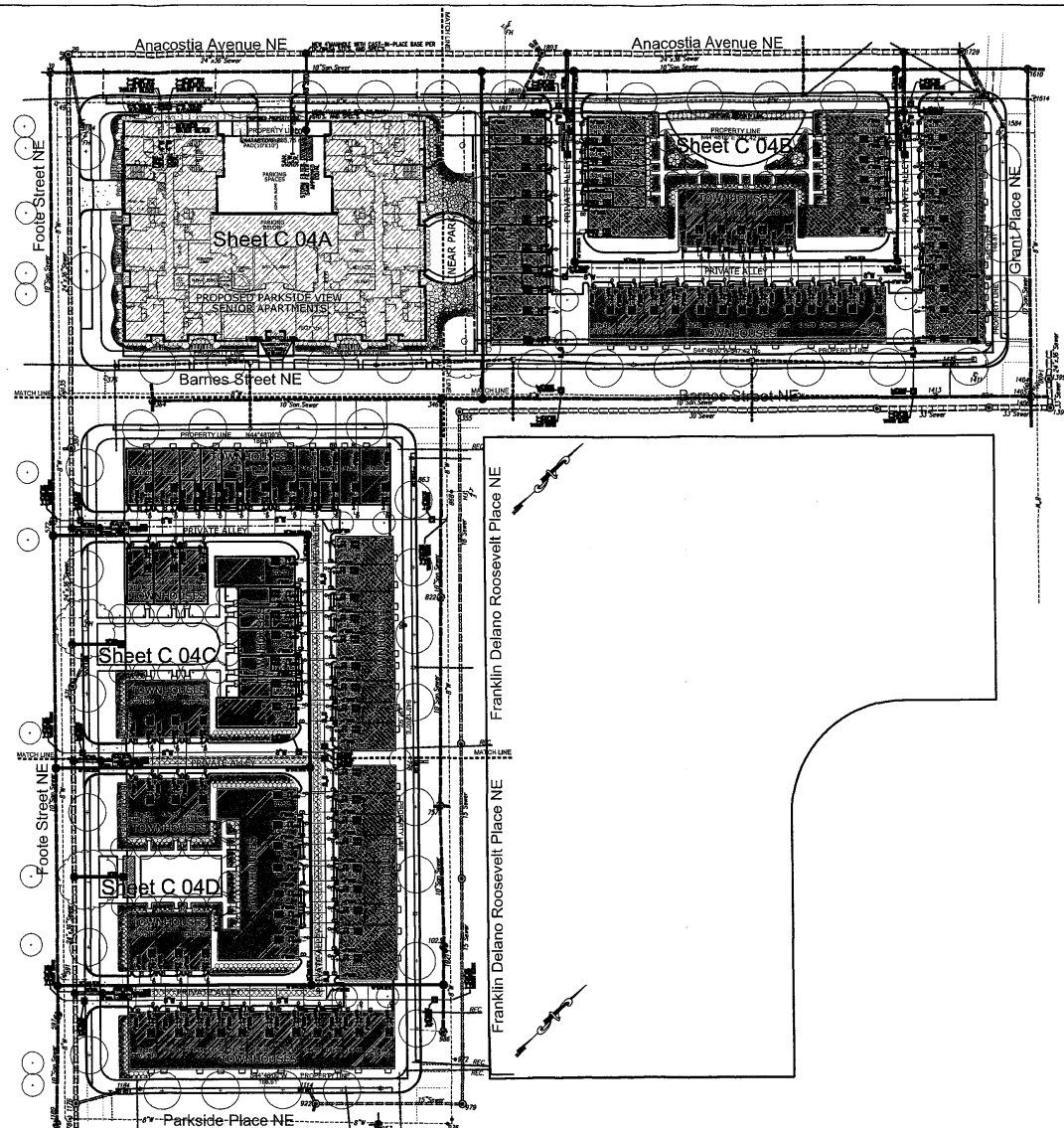
WATER: 310 GPD/UNIT X 98 UNITS = 30,380 GPD  
SEWAGE: 300 GPD/UNIT X 98 UNITS = 29,400 GPD

**PARKSIDE TOWNHOUSES:**

WATER: 310 GPD/UNIT X 118 UNITS = 36,580 GPD  
SEWAGE: 300 GPD/UNIT X 118 UNITS = 35,400 GPD

**NOTE:**

STORMWATER MANAGEMENT FACILITIES, SEDIMENTATION AND EROSION CONTROLS AND THEIR LOCATIONS TO MEET THE REQUIREMENTS OF THE DISTRICT OF COLUMBIA, DEPARTMENT OF ENVIRONMENT, WATERSHED PROTECTION DIVISION AND WILL BE PROVIDED BY MEANS OF STORMFILTERS OR EQUAL TO BE APPROVED BY DC DEPARTMENT OF ENVIRONMENT.



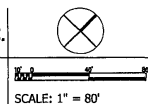
**WILES MENSCH CORPORATION**

Planning, Engineering, Surveying & Landscape Architecture  
11860 Sunrise Valley Drive Suite 200 Reston, Virginia 20191  
(T) 703.391.7800 (F) 703.264.0595 www.wilesmensch.com

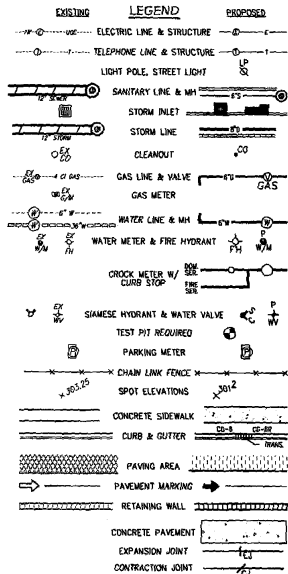
**Over-all Utility Plan**

March 24, 2008

PARKSIDE AT WASHINGTON D.C.



**C.04**



**AVERAGE DAILY WATER DEMAND AND SEWAGE FLOW:**

**PARKSIDE SENIOR HOUSING:**

WATER: 310 GPD/UNIT X 88 UNITS = 30,380 GPD

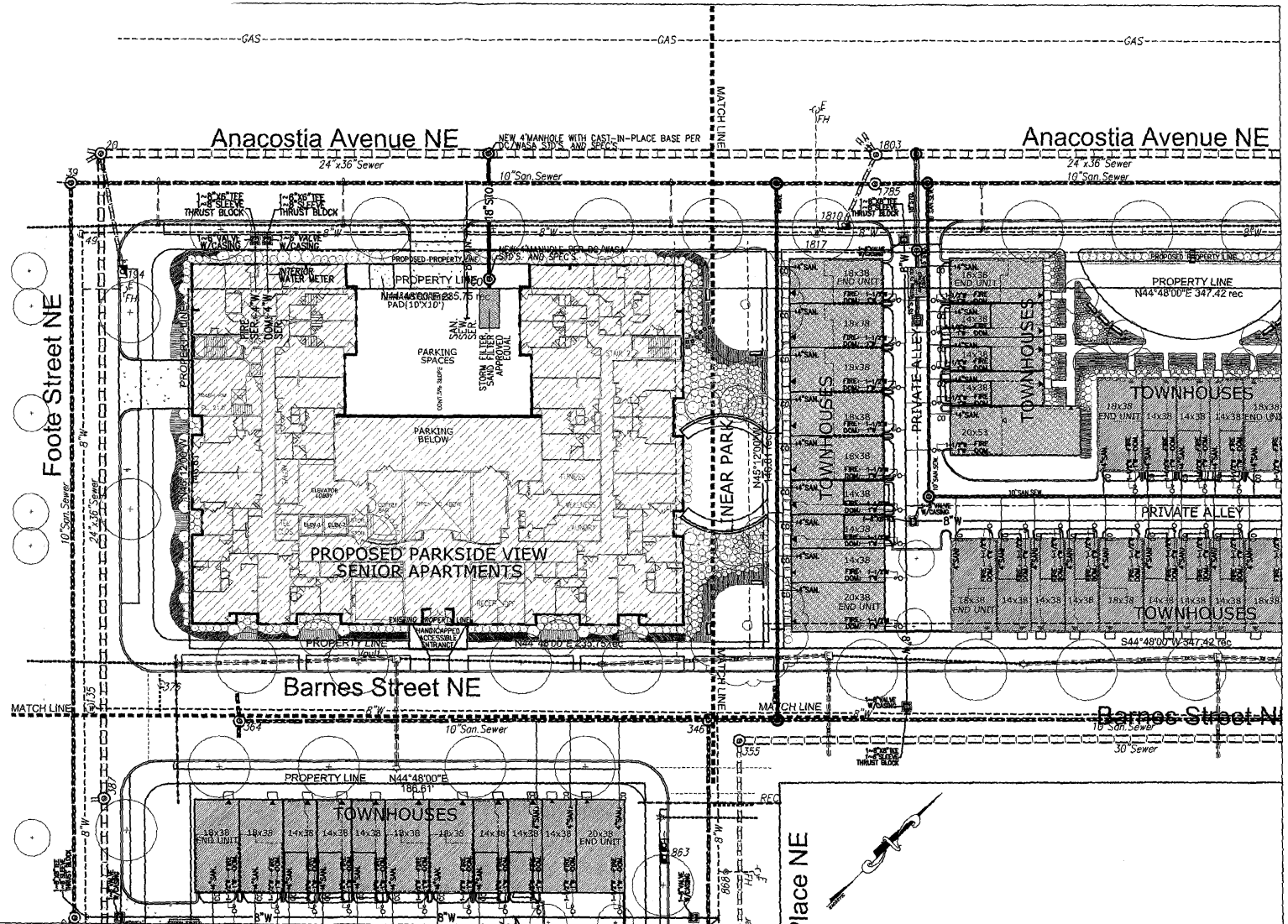
SEWAGE: 300 GPD/UNIT X 88 UNITS = 26,400 GPD

**PARKSIDE TOWNHOUSES:**

WATER: 310 GPD/UNIT X 118 UNITS = 36,580 GPD

SEWAGE: 299 GPD/UNIT X 118 UNITS = 35,400 GPD

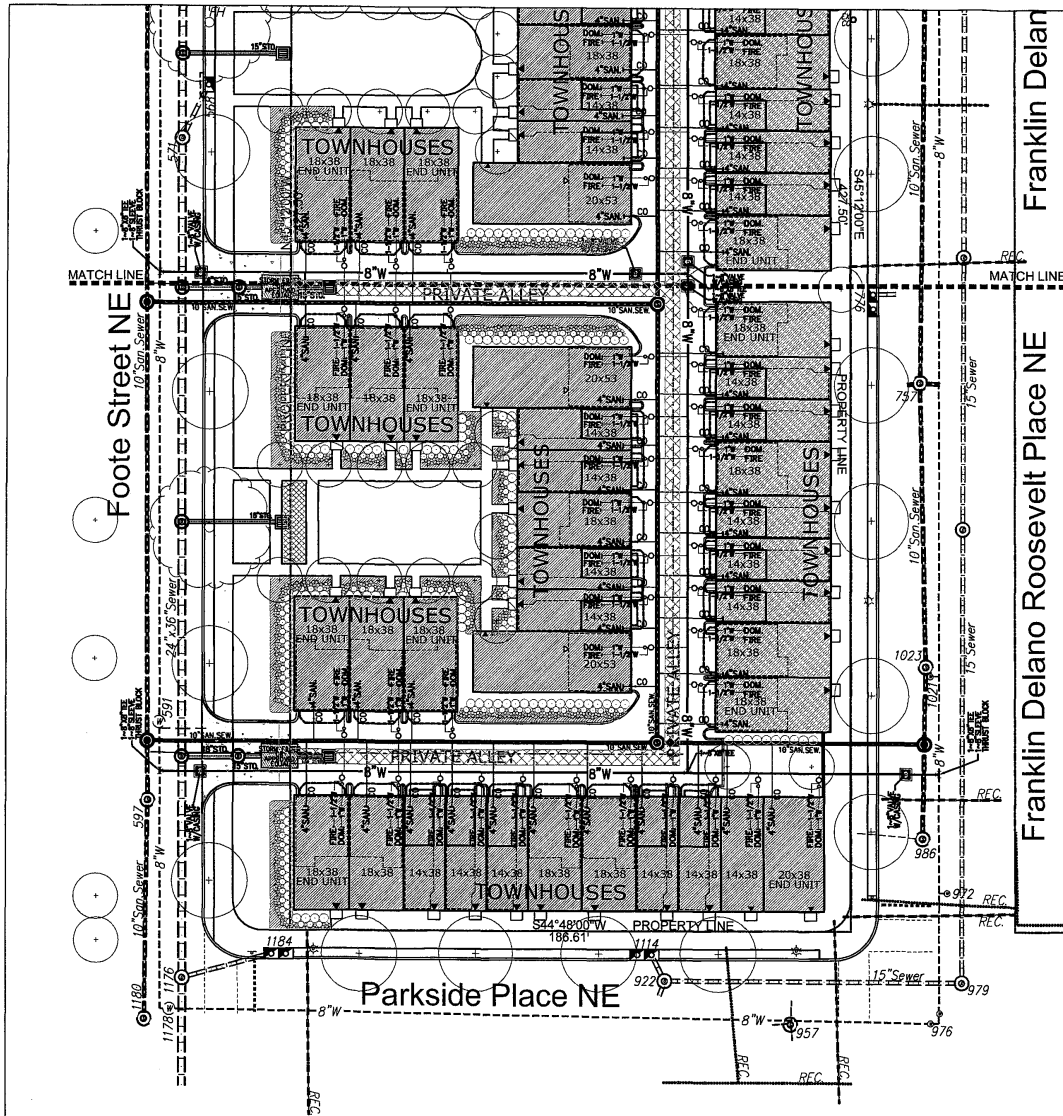
**NOTE:**  
STORMWATER MANAGEMENT FACILITIES, SEDIMENTATION AND EROSION CONTROLS AND THEIR LOCATIONS TO MEET THE REQUIREMENTS OF THE DISTRICT OF COLUMBIA DEPARTMENT OF ENVIRONMENT, WATERED PROTECTION DIVISION AND WILL BE PROVIDED BY MEANS OF STORMFLOODS OR EQUAL TO BE APPROVED BY DC DEPARTMENT OF ENVIRONMENT.





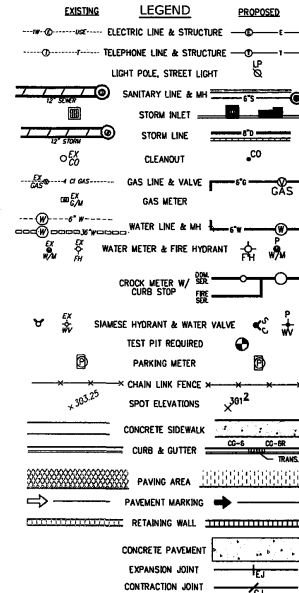






Franklin Delano

Franklin Delano Roosevelt Place NE



**AVERAGE DAILY WATER DEMAND AND SEWAGE FLOW:**

**PARKSIDE SENIOR HOUSING:**

WATER: 310 GPD/UNIT X 88 UNITS = 30,380 GPD  
SEWAGE: 300 GPD/UNIT X 88 UNITS = 28,400 GPD

**PARKSIDE TOWNHOUSES:**

WATER: 310 GPD/UNIT X 118 UNITS = 36,580 GPD  
SEWAGE: 300 GPD/UNIT X 118 UNITS = 35,400 GPD

**NOTE:**

STORMWATER MANAGEMENT FACILITIES, SEDIMENTATION AND EROSION CONTROLS AND THEIR LOCATIONS TO MEET THE REQUIREMENTS OF THE DISTRICT OF COLUMBIA, DEPARTMENT OF ENVIRONMENT, WATERSHED PROTECTION DIVISION AND WILL BE PROVIDED BY MEANS OF STORMFILTERS OR EQUAL TO BE APPROVED BY DC DEPARTMENT OF ENVIRONMENT.

# **CONSTRUCTION AND STABILIZATION SEQUENCE:**

1. INSTALL SEDIMENT AND EROSION CONTROL MEASURES INCLUDING STABILIZED CONSTRUCTION ENTRANCE, WASH RACK, INLET PROTECTION, TREE PROTECTION, SILT FENCE, AS INDICATED ON THE SHEET. SEE SHEET C.06 FOR SEDIMENT AND EROSION CONTROL DETAILS.
2. SEDIMENT CONTROL MEASURES SHALL BE INSPECTED AND APPROVED BY THE INSPECTOR PRIOR TO COMMENCING ANY OTHER LAND DISTURBING ACTIVITIES.
3. INSTALL SITE IMPROVEMENTS AS INDICATED ON CONSTRUCTION DOCUMENTS FOR THE PROPOSED BUILDING.
4. AT THE COMPLETION OF CONSTRUCTION AND AFTER THE INSPECTOR'S APPROVAL, ALL TEMPORARY SEDIMENTATION AND EROSION CONTROL MEASURES SHALL BE REMOVED.

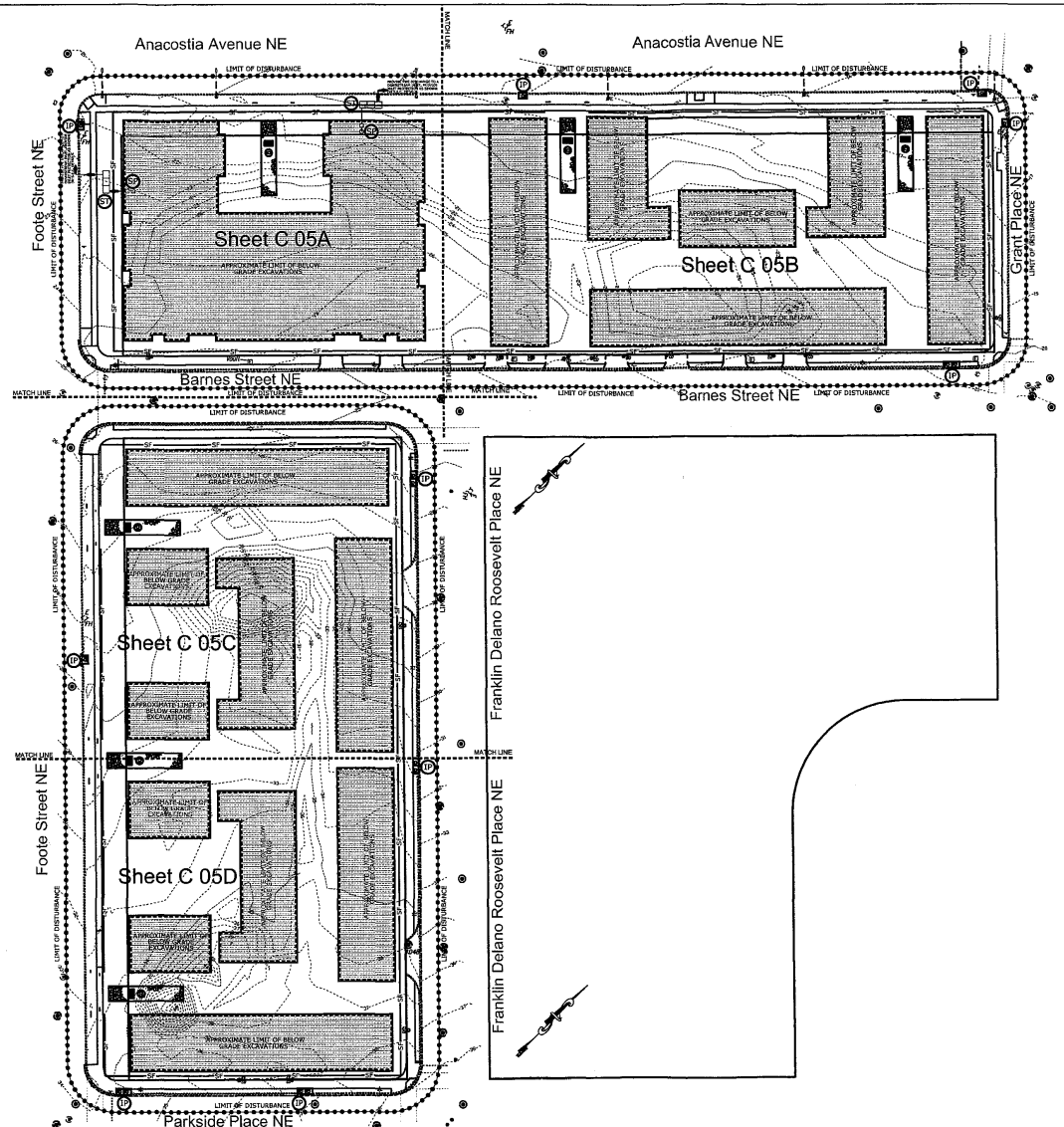
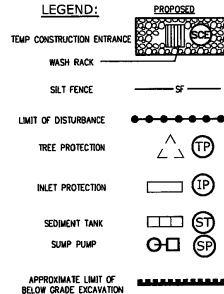
## **NOTE:**

1. THE CONTRACTOR SHALL BE RESPONSIBLE FOR DESIGN OF SHEETING AND SHORING AND SUPPORT OF EXISTING UTILITIES AND ADJACENT STRUCTURES SHORING, BRACING, AND UNDERPINNING DESIGNED BY THE CONTRACTOR'S STRUCTURAL ENGINEER LICENSED IN THE DISTRICT OF COLUMBIA SHALL BE PROVIDED AS NECESSARY TO ENSURE THEIR SUPPORT.
2. PROVIDE SILT FENCE AT PERIMETER OF EXCAVATION AREA TO REMAIN IN PLACE UNTIL BELOW GRADE EXCAVATION HAS BEGUN UNLESS OTHERWISE APPROVED BY THE INSPECTOR.
3. PROVIDE CONSTRUCTION FENCE AT PERIMETER OF EXCAVATION AREA TO REMAIN IN PLACE UNLESS OTHERWISE APPROVED BY THE INSPECTOR.
4. CONTRACTOR TO PROVIDE ON SITE APPROVED STAMPED AND SIGNED SEDIMENTATION AND EROSION CONTROL DRAWINGS BY DEPARTMENT OF HEALTH, WATERSHED PROTECTION DIVISION.
5. REFER TO THE CORRECTIVE ACTION PLAN AND THE DISTRICT OF COLUMBIA'S VOLUNTARY REMEDIATION ACTION PROGRAM AUTHORIZATION FOR TREATMENT OF CONTAMINATED GROUND WATER.

## **DUST CONTROL NOTES:**

1. THE CONTRACTOR SHALL CONDUCT OPERATIONS AND MAINTAIN THE PROJECT SITE AS TO MINIMIZE THE CREATION AND DISPERSION OF DUST. DUST CONTROL SHALL BE USED THROUGHOUT THE WORK AT THE SITE.
2. THE CONTRACTOR MUST PROVIDE CLEAN WATER, FREE FROM SALT, OIL, AND OTHER DELETERIOUS MATERIAL, TO BE USED FOR ON-SITE DUST CONTROL.
3. THE CONTRACTOR SHALL SUPPLY WATER SPRAYING EQUIPMENT CAPABLE OF ACCESSING ALL WORK AREAS.
4. THE CONTRACTOR SHALL IMPLEMENT STRICT DUST CONTROL MEASURES DURING ACTIVE CONSTRUCTION PERIODS ON-SITE. THESE CONTROL MEASURES WILL GENERALLY CONSIST OF WATER APPLICATIONS THAT SHALL BE APPLIED A MINIMUM OF ONCE PER DAY DURING DRY WEATHER OR MORE OFTEN AS REQUIRED TO PREVENT DUST EMISSIONS.
5. FOR WATER APPLICATION TO UNDISTURBED SOIL SURFACES, THE CONTRACTOR SHALL:
  - A. APPLY WATER WITH EQUIPMENT CONSISTING OF TANK, SPRAY BAR, PUMP WITH DISCHARGE PRESSURE GAUGE.
  - B. ARRANGE SPRAY BAR HEIGHT, NOZZLE SPACING AND SPRAY PATTERN TO PROVIDE COMPLETE COVERAGE OF GROUND WITH WATER.
  - C. DISPERSE WATER THROUGH NOZZLES ON SPRAY BAR AT 20 PSI (137.8 K PA) MINIMUM. KEEP AREAS DAMP WITHOUT CREATING NUISANCE CONDITIONS SUCH AS PONDING.
6. FOR WATER APPLICATION TO SOIL SURFACES DURING DEMOLITION AND/OR EXCAVATION, THE CONTRACTOR SHALL:
  - A. APPLY WATER WITH EQUIPMENT CONSISTING OF A TANK, PUMP WITH DISCHARGE GAUGE, HOSES AND MIST NOZZLES.
  - B. LOCATE TANK AND SPRAYING EQUIPMENT SO THAT THE ENTIRE EXCAVATION AREA CAN BE MISTED WITHOUT INTERFERING WITH DEMOLITION AND/OR EXCAVATION EQUIPMENT OR OPERATIONS. KEEP AREAS DAMP WITHOUT CREATING NUISANCE CONDITIONS SUCH AS PONDING.
  - C. APPLY WATER SPRAY IN A MANNER TO PREVENT MOVEMENT OF SPRAY BEYOND SITE BOUNDARIES.

## **LEGEND:**



# **CONSTRUCTION AND STABILIZATION SEQUENCE:**

1. INSTALL SEDIMENT AND EROSION CONTROL MEASURES INCLUDING STABILIZED CONSTRUCTION ENTRANCE, WASH RACK, INLET PROTECTION, TREE PROTECTION, SILT FENCE, AS INDICATED ON THE SHEET. SEE SHEET C.06 FOR SEDIMENT AND EROSION CONTROL DETAILS.
2. SEDIMENT CONTROL MEASURES SHALL BE INSPECTED AND APPROVED BY THE INSPECTOR PRIOR TO COMMENCING ANY OTHER LAND DISTURBING ACTIVITIES.
3. INSTALL SITE IMPROVEMENTS AS INDICATED ON CONSTRUCTION DOCUMENTS FOR THE PROPOSED BUILDING.
4. AT THE COMPLETION OF CONSTRUCTION AND AFTER THE INSPECTOR'S APPROVAL, ALL TEMPORARY SEDIMENTATION AND EROSION CONTROL MEASURES SHALL BE REMOVED.

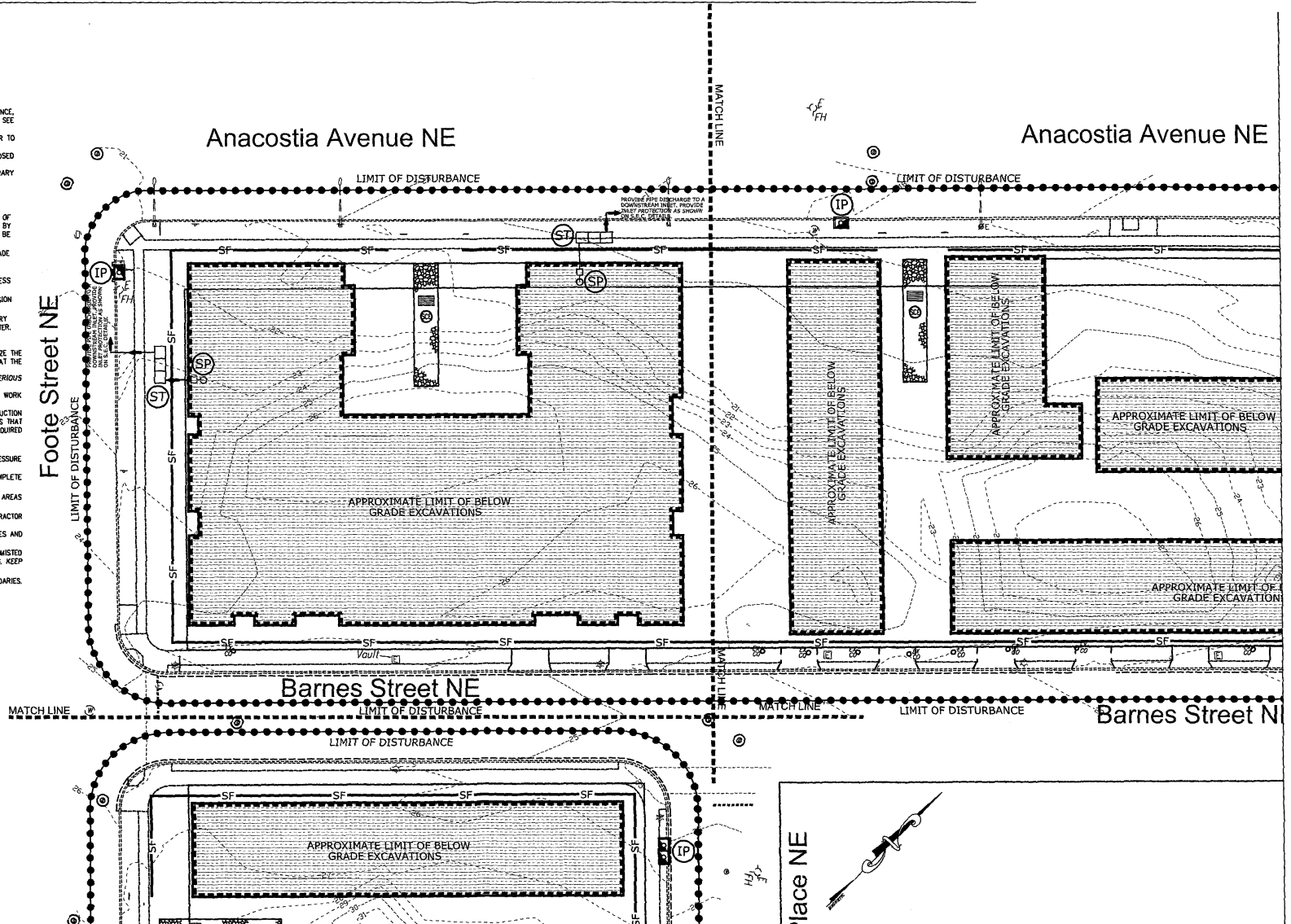
## **NOTE:**

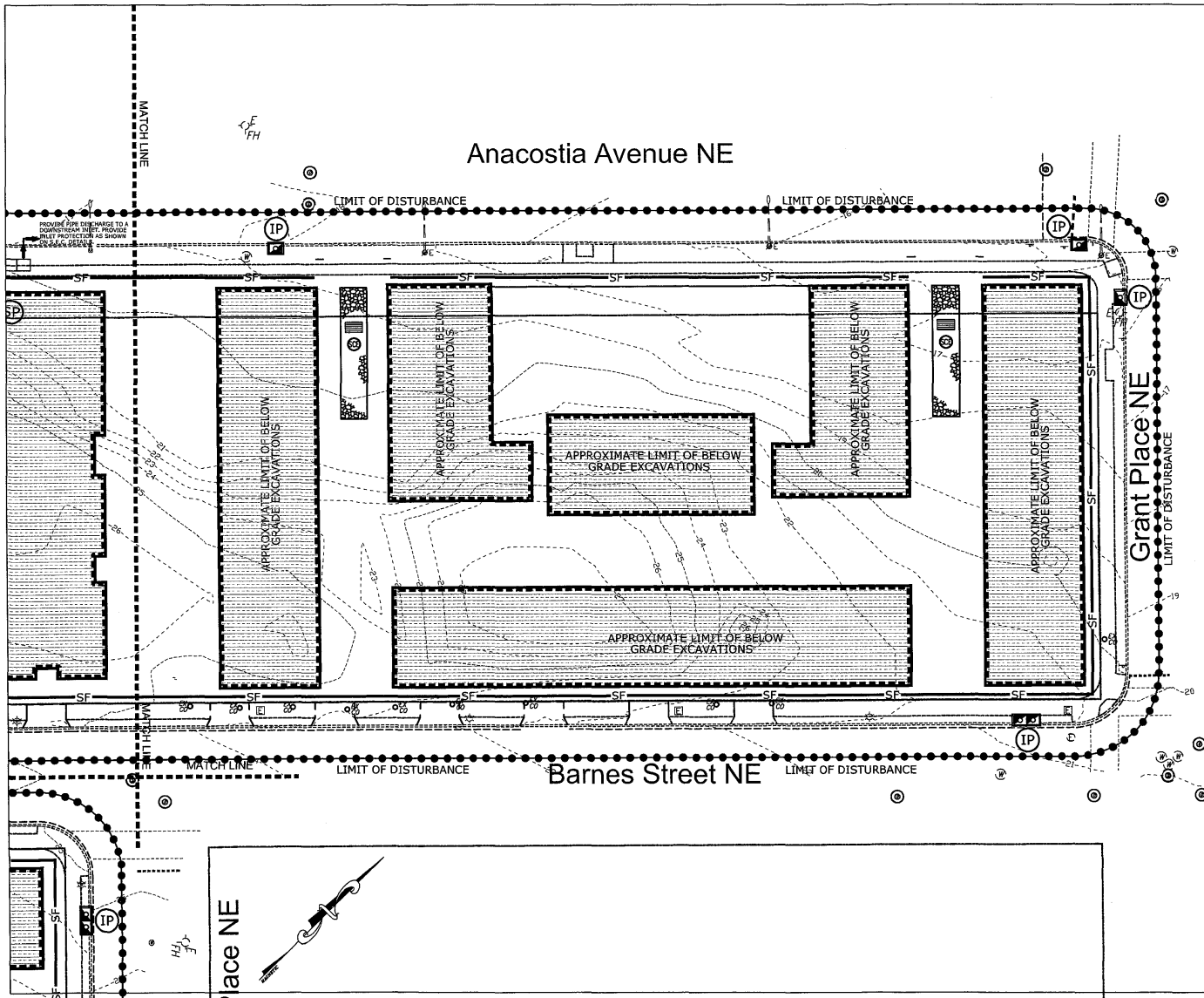
1. THE CONTRACTOR SHALL BE RESPONSIBLE FOR DESIGN OF SHEETING AND SHORING AND SUPPORT OF EXISTING UTILITIES AND ADJACENT STRUCTURES, SHORING, BRACING, AND UNDERPINNING DESIGNED BY THE CONTRACTOR'S STRUCTURAL ENGINEER LICENSED IN THE DISTRICT OF COLUMBIA SHALL BE PROVIDED AS NECESSARY TO ENSURE THEIR SUPPORT.
2. PROVIDE SILT FENCE AT PERIMETER OF EXCAVATION AREA TO REMAIN IN PLACE UNTIL BELOW GRADE EXCAVATION HAS BEGUN UNLESS OTHERWISE APPROVED BY THE INSPECTOR.
3. PROVIDE CONSTRUCTION FENCE AT PERIMETER OF EXCAVATION AREA TO REMAIN IN PLACE UNLESS OTHERWISE APPROVED BY THE INSPECTOR.
4. CONTRACTOR TO PROVIDE ON SITE APPROVED STAMPED AND SIGNED SEDIMENTATION AND EROSION CONTROL DRAWINGS BY DEPARTMENT OF HEALTH, WATERSHED PROTECTION DIVISION.
5. REFER TO THE CORRECTIVE ACTION PLAN AND THE DISTRICT OF COLUMBIA'S VOLUNTARY REMEDIATION ACTION PROGRAM AUTHORIZATION FOR TREATMENT OF CONTAMINATED GROUND WATER.

- DUST CONTROL NOTES:**
1. THE CONTRACTOR SHALL CONDUCT OPERATIONS AND MAINTAIN THE PROJECT SITE AS TO MINIMIZE THE CREATION AND DISPERSION OF DUST. DUST CONTROL SHALL BE USED THROUGHOUT THE WORK AT THE SITE.
  2. THE CONTRACTOR MUST PROVIDE CLEAN WATER, FREE FROM SALT, OIL AND OTHER DELETERIOUS MATERIAL TO BE USED FOR ON-SITE DUST CONTROL.
  3. THE CONTRACTOR SHALL SUPPLY WATER SPRAYING EQUIPMENT CAPABLE OF ACCESSING ALL WORK AREAS.
  4. THE CONTRACTOR SHALL IMPLEMENT STRICT DUST CONTROL MEASURES DURING ACTIVE CONSTRUCTION PERIODS ON-SITE. THESE CONTROL MEASURES WILL GENERALLY CONSIST OF WATER APPLICATIONS THAT SHALL BE APPLIED A MINIMUM OF ONCE PER DAY DURING DRY WEATHER OR MORE OFTEN AS REQUIRED TO PREVENT DUST EMISSIONS.
  5. FOR WATER APPLICATION TO UNDISTURBED SOIL SURFACES, THE CONTRACTOR SHALL:
    - A. APPLY WATER WITH EQUIPMENT CONSISTING OF TANK, SPRAY BAR, PUMP WITH DISCHARGE PRESSURE GAUGE.
    - B. ARRANGE SPRAY BAR HEIGHT, NOZZLE SPACING AND SPRAY PATTERN TO PROVIDE COMPLETE COVERAGE OF GROUND WITH WATER.
    - C. DISPERSE WATER THROUGH NOZZLES ON SPRAY BAR AT 20 PSI (137.8 K PA) MINIMUM. KEEP AREAS DAMP WITHOUT CREATING NUISANCE CONDITIONS SUCH AS PONDING.
  6. FOR WATER APPLICATION TO SOIL SURFACES DURING DEMOLITION AND/OR EXCAVATION, THE CONTRACTOR SHALL:
    - A. APPLY WATER WITH EQUIPMENT CONSISTING OF A TANK, PUMP WITH DISCHARGE GAUGE, HOSES AND MIST NOZZLES.
    - B. LOCATE TANK AND SPRAYING EQUIPMENT SO THAT THE ENTIRE EXCAVATION AREA CAN BE MISTED WITHOUT INTERFERING WITH DEMOLITION AND/OR EXCAVATION EQUIPMENT OR OPERATIONS. KEEP AREAS DAMP WITHOUT CREATING NUISANCE CONDITIONS SUCH AS PONDING.
    - C. APPLY WATER SPRAY IN A MANNER TO PREVENT MOVEMENT OF SPRAY BEYOND SITE BOUNDARIES.

## **LEGEND:**

TEMP CONSTRUCTION ENTRANCE	
WASH RACK	
SILT FENCE	
LIMIT OF DISTURBANCE	
TREE PROTECTION	
INLET PROTECTION	
SEDIMENT TANK	
SUMP PUMP	
APPROXIMATE LIMIT OF BELOW GRADE EXCAVATION	





#### CONSTRUCTION AND STABILIZATION SEQUENCE:

1. INSTALL SEDIMENT AND EROSION CONTROL MEASURES INCLUDING STABILIZED CONSTRUCTION ENTRANCE, WASH RACK, INLET PROTECTION, TREE PROTECTION, SILT FENCE, AS INDICATED ON THE SHEET. SEE SHEET C.05B FOR SEDIMENT AND EROSION CONTROL DETAILS.
2. SEDIMENT CONTROL MEASURES SHALL BE INSPECTED AND APPROVED BY THE INSPECTOR PRIOR TO COMMENCING ANY OTHER LAND DISTURBING ACTIVITIES.
3. INSTALL SITE IMPROVEMENTS AS INDICATED ON CONSTRUCTION DOCUMENTS FOR THE PROPOSED BUILDING.
4. AT THE COMPLETION OF CONSTRUCTION AND AFTER THE INSPECTOR'S APPROVAL, ALL TEMPORARY SEDIMENTATION AND EROSION CONTROL MEASURES SHALL BE REMOVED.

#### NOTE:

1. THE CONTRACTOR SHALL BE RESPONSIBLE FOR DESIGN OF SHEETING AND SHORING AND SUPPORT OF EXISTING UTILITIES AND ADJACENT STRUCTURES. SHORING, BRACING, AND UNDERPINNING DESIGNED BY THE CONTRACTOR'S STRUCTURAL ENGINEER LICENSED IN THE DISTRICT OF COLUMBIA SHALL BE PROVIDED AS NECESSARY TO ENSURE THEIR SUPPORT.
2. PROVIDE SILT FENCE AT PERIMETER OF EXCAVATION AREA TO REMAIN IN PLACE UNTIL BELOW GRADE EXCAVATION HAS BEGUN UNLESS OTHERWISE APPROVED BY THE INSPECTOR.
3. PROVIDE CONSTRUCTION FENCE AT PERIMETER OF EXCAVATION AREA TO REMAIN IN PLACE UNLESS OTHERWISE APPROVED BY THE INSPECTOR.
4. CONTRACTOR TO PROVIDE ON SITE APPROVED STAMPED AND SIGNED SEDIMENTATION AND EROSION CONTROL DRAWINGS BY DEPARTMENT OF HEALTH, WATERSHED PROTECTION DIVISION.
5. REFER TO THE CORRECTIVE ACTION PLAN AND THE DISTRICT OF COLUMBIA'S VOLUNTARY REMEDIATION ACTION PROGRAM AUTHORIZATION FOR TREATMENT OF CONTAMINATED GROUND WATER.

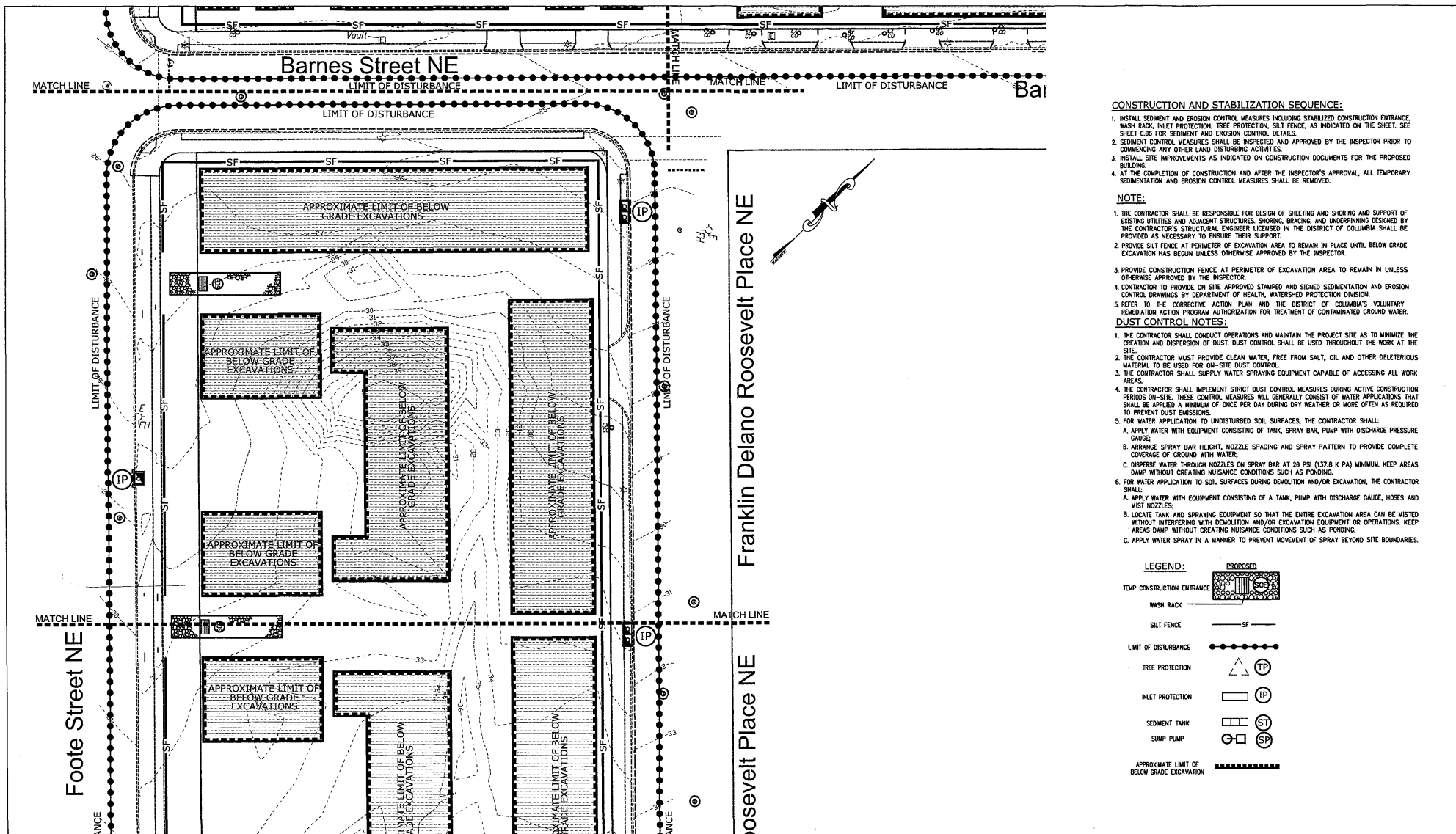
#### DUST CONTROL NOTES:

1. THE CONTRACTOR SHALL CONDUCT OPERATIONS AND MAINTAIN THE PROJECT SITE AS TO MINIMIZE THE CREATION AND DISPERSION OF DUST. DUST CONTROL SHALL BE USED THROUGHOUT THE WORK AT THE SITE.
2. THE CONTRACTOR MUST PROVIDE CLEAN WATER, FREE FROM SALT, OIL AND OTHER DELETERIOUS MATERIAL TO BE USED FOR ON-SITE DUST CONTROL.
3. THE CONTRACTOR SHALL SUPPLY WATER SPRAYING EQUIPMENT CAPABLE OF ACCESSING ALL WORK AREAS.
4. THE CONTRACTOR SHALL IMPLEMENT STRICT DUST CONTROL MEASURES DURING ACTIVE CONSTRUCTION PERIODS ON-SITE. THESE CONTROL MEASURES WILL GENERALLY CONSIST OF WATER APPLICATIONS THAT SHALL BE APPLIED A MINIMUM OF ONCE PER DAY DURING DRY WEATHER OR MORE OFTEN AS REQUIRED TO PREVENT DUST EMISSIONS.
5. FOR WATER APPLICATION TO UNDISTURBED SOIL SURFACES, THE CONTRACTOR SHALL:
  - A. APPLY WATER WITH EQUIPMENT CONSISTING OF A TANK, SPRAY BAR, PUMP WITH DISCHARGE PRESSURE GAUGE.
  - B. ARRANGE SPRAY BAR HEIGHT, NOZZLE SPACING AND SPRAY PATTERN TO PROVIDE COMPLETE COVERAGE OF GROUND WITH WATER.
  - C. DISPERSE WATER THROUGH NOZZLES ON SPRAY BAR AT 20 PSI (137.9 K PA) MINIMUM. KEEP AREAS DAMP WITHOUT CREATING NUISANCE CONDITIONS SUCH AS PONDING.
6. FOR WATER APPLICATION TO SOIL SURFACES DURING DEVOLITION AND/OR EXCAVATION, THE CONTRACTOR SHALL:
  - A. APPLY WATER WITH EQUIPMENT CONSISTING OF A TANK, PUMP WITH DISCHARGE GAUGE, HOSES AND MIST NOZZLES.
  - B. LOCATE TANK AND SPRAYING EQUIPMENT SO THAT THE ENTIRE EXCAVATION AREA CAN BE MISTED WITHOUT INTERFERING WITH DEVOLITION AND/OR EXCAVATION EQUIPMENT OR OPERATIONS. KEEP AREAS DAMP WITHOUT CREATING NUISANCE CONDITIONS SUCH AS PONDING.
  - C. APPLY WATER SPRAY IN A MANNER TO PREVENT MOVEMENT OF SPRAY BEYOND SITE BOUNDARIES.

#### LEGEND:

TEMP CONSTRUCTION ENTRANCE	
WASH RACK	
SILT FENCE	SF
LIMIT OF DISTURBANCE	
TREE PROTECTION	TP
INLET PROTECTION	IP
SEDIMENT TANK	ST
SUMP PUMP	SP
APPROXIMATE LIMIT OF BELOW GRADE EXCAVATION	





#### CONSTRUCTION AND STABILIZATION SEQUENCE:

1. INSTALL SEDIMENT AND EROSION CONTROL MEASURES INCLUDING STABILIZED CONSTRUCTION ENTRANCE, WASH RACK, INLET PROTECTION, TREE PROTECTION, SILT FENCE, AS INDICATED ON THE SHEET. SEE SHEET C.05 FOR SEDIMENT AND EROSION CONTROL DETAILS.
2. SEDIMENT CONTROL MEASURES SHALL BE INSPECTED AND APPROVED BY THE INSPECTOR PRIOR TO COMMENCING ANY OTHER LAND DISTURBING ACTIVITIES.
3. INSTALL SITE IMPROVEMENTS AS INDICATED ON CONSTRUCTION DOCUMENTS FOR THE PROPOSED BUILDING.
4. AT THE COMPLETION OF CONSTRUCTION AND AFTER THE INSPECTOR'S APPROVAL, ALL TEMPORARY SEDIMENTATION AND EROSION CONTROL MEASURES SHALL BE REMOVED.

#### NOTE:

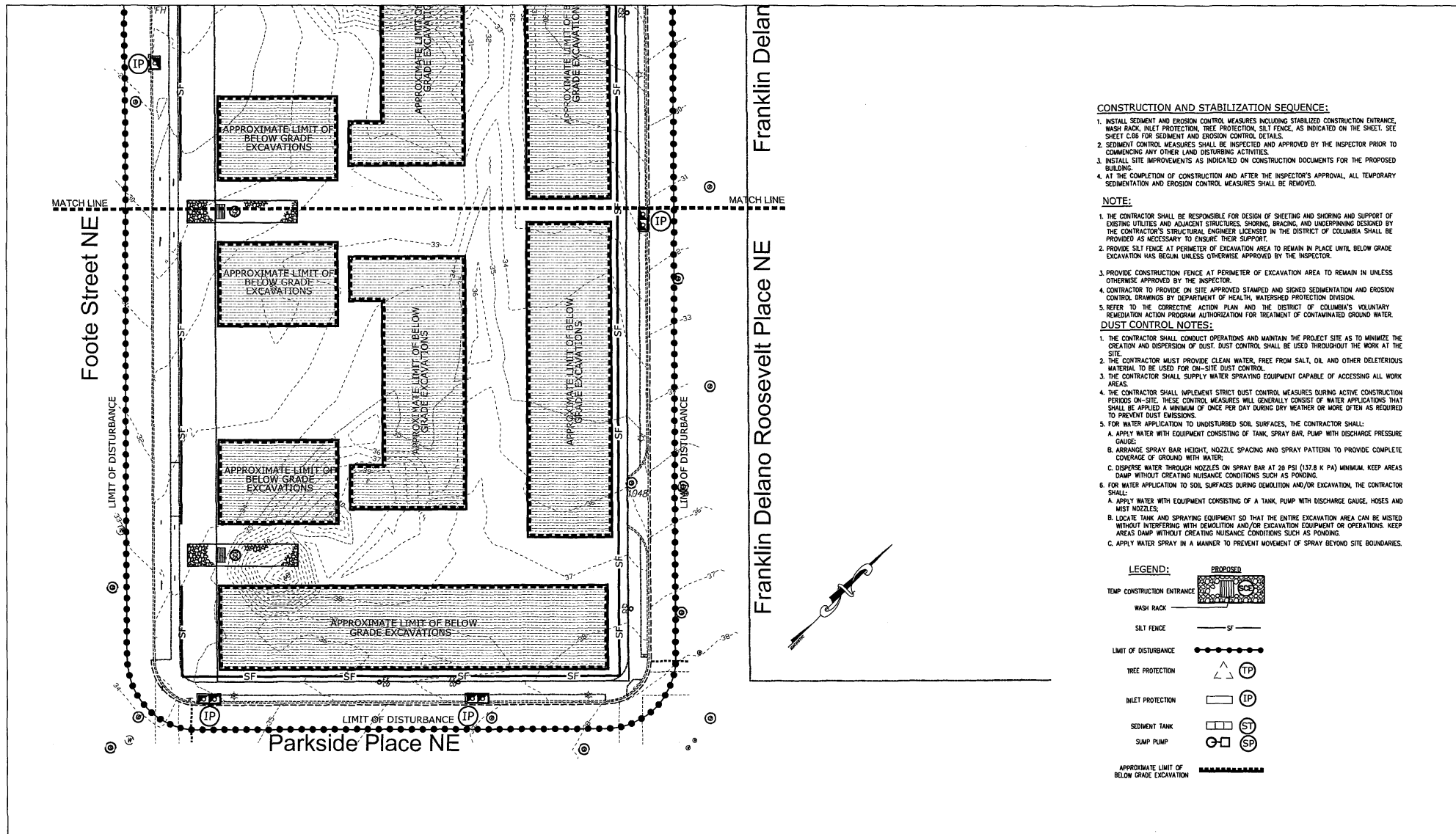
1. THE CONTRACTOR SHALL BE RESPONSIBLE FOR DESIGN OF SHEETING AND SHORING AND SUPPORT OF EXISTING UTILITIES AND ADJACENT STRUCTURES, SHORING, BRACING, AND UNDERPINNING DESIGNED BY THE CONTRACTOR'S STRUCTURAL ENGINEER LICENSED IN THE DISTRICT OF COLUMBIA SHALL BE PROVIDED AS NECESSARY TO ENSURE THEIR SUPPORT.
2. PROVIDE SILT FENCE AT PERIMETER OF EXCAVATION AREA TO REMAIN IN PLACE UNTIL BELOW GRADE EXCAVATION HAS BEGUN UNLESS OTHERWISE APPROVED BY THE INSPECTOR.
3. PROVIDE CONSTRUCTION FENCE AT PERIMETER OF EXCAVATION AREA TO REMAIN IN PLACE UNLESS OTHERWISE APPROVED BY THE INSPECTOR.
4. CONTRACTOR TO PROVIDE ON SITE APPROVED STAMPED AND SIGNED SEDIMENTATION AND EROSION CONTROL DRAWINGS BY DEPARTMENT OF HEALTH, WATERSHED PROTECTION DIVISION.
5. REFER TO THE CORRECTIVE ACTION PLAN AND THE DISTRICT OF COLUMBIA'S VOLUNTARY REMEDIATION ACTION PROGRAM AUTHORIZATION FOR TREATMENT OF CONTAMINATED GROUND WATER.

#### DUST CONTROL NOTES:

1. THE CONTRACTOR SHALL CONDUCT OPERATIONS AND MAINTAIN THE PROJECT SITE AS TO MINIMIZE THE CREATION AND DISPERSION OF DUST. DUST CONTROL SHALL BE USED THROUGHOUT THE WORK AT THE SITE.
2. THE CONTRACTOR MUST PROVIDE CLEAN WATER, FREE FROM SALT, OIL AND OTHER DELETERIOUS MATERIAL TO BE USED FOR ON-SITE DUST CONTROL.
3. THE CONTRACTOR SHALL SUPPLY WATER SPRAYING EQUIPMENT CAPABLE OF ACCESSING ALL WORK AREAS.
4. THE CONTRACTOR SHALL IMPLEMENT STRICT DUST CONTROL MEASURES DURING ACTIVE CONSTRUCTION PERIODS ON-SITE. THESE CONTROL MEASURES WILL GENERALLY CONSIST OF WATER APPLICATIONS THAT SHALL BE APPLIED A MINIMUM OF ONCE PER DAY DURING DRY WEATHER OR MORE OFTEN AS REQUIRED TO PREVENT DUST EMISSIONS.
5. FOR WATER APPLICATION TO UNDISTURBED SOIL SURFACES, THE CONTRACTOR SHALL:
  - A. APPLY WATER WITH EQUIPMENT CONSISTING OF TANK, SPRAY BAR, PUMP WITH DISCHARGE PRESSURE GAUGE.
  - B. ARRANGE SPRAY BAR HEIGHT, NOZZLE SPACING AND SPRAY PATTERN TO PROVIDE COMPLETE COVERAGE OF GROUND WITH WATER.
  - C. DISPOSE WATER THROUGH NOZZLES ON SPRAY BAR AT 20 PSI (132.8 K PA) MINIMUM. KEEP AREAS DAMP WITHOUT CREATING NUISANCE CONDITIONS SUCH AS PONDING.
6. FOR WATER APPLICATION TO SOIL SURFACES DURING DEMOLITION AND/OR EXCAVATION, THE CONTRACTOR SHALL:
  - A. APPLY WATER WITH EQUIPMENT CONSISTING OF A TANK, PUMP WITH DISCHARGE GAUGE, HOSES AND MIST NOZZLES.
  - B. LOCATE TANK AND SPRAYING EQUIPMENT SO THAT THE ENTIRE EXCAVATION AREA CAN BE WETTED WITHOUT INTERFERING WITH DEMOLITION AND/OR EXCAVATION EQUIPMENT OR OPERATIONS. KEEP AREAS DAMP WITHOUT CREATING NUISANCE CONDITIONS SUCH AS PONDING.
  - C. APPLY WATER SPRAY IN A MANNER TO PREVENT MOVEMENT OF SPRAY BEYOND SITE BOUNDARIES.

#### LEGEND:

TEMP CONSTRUCTION ENTRANCE	
WASH RACK	
SILT FENCE	
LIMIT OF DISTURBANCE	
TREE PROTECTION	
INLET PROTECTION	
SEDIMENT TANK	
SUMP PUMP	
APPROXIMATE LIMIT OF BELOW GRADE EXCAVATION	



#### CONSTRUCTION AND STABILIZATION SEQUENCE:

1. INSTALL SEDIMENT AND EROSION CONTROL MEASURES INCLUDING STABILIZED CONSTRUCTION ENTRANCE, WASH RACK, INLET PROTECTION, TREE PROTECTION, SILT FENCE, AS INDICATED ON THE SHEET. SEE SHEET C.06 FOR SEDIMENT AND EROSION CONTROL DETAILS.
2. SEDIMENT CONTROL MEASURES SHALL BE INSPECTED AND APPROVED BY THE INSPECTOR PRIOR TO COMMENCING ANY OTHER LAND DISTURBING ACTIVITIES.
3. INSTALL SITE IMPROVEMENTS AS INDICATED ON CONSTRUCTION DOCUMENTS FOR THE PROPOSED BUILDING.
4. AT THE COMPLETION OF CONSTRUCTION AND AFTER THE INSPECTOR'S APPROVAL, ALL TEMPORARY SEDIMENTATION AND EROSION CONTROL MEASURES SHALL BE REMOVED.

#### NOTE:

1. THE CONTRACTOR SHALL BE RESPONSIBLE FOR DESIGN OF SHEETING AND SHORING AND SUPPORT OF EXISTING UTILITIES AND ADJACENT STRUCTURES, SHORING, BRACING, AND UNDERPINNING DESIGNED BY THE CONTRACTOR'S STRUCTURAL ENGINEER LICENSED IN THE DISTRICT OF COLUMBIA SHALL BE PROVIDED AS NECESSARY TO ENSURE THEIR SUPPORT.
2. PROVIDE SILT FENCE AT PERIMETER OF EXCAVATION AREA TO REMAIN IN PLACE UNTIL BELOW GRADE EXCAVATION HAS BEGUN UNLESS OTHERWISE APPROVED BY THE INSPECTOR.
3. PROVIDE CONSTRUCTION FENCE AT PERIMETER OF EXCAVATION AREA TO REMAIN IN PLACE UNLESS OTHERWISE APPROVED BY THE INSPECTOR.
4. CONTRACTOR TO PROVIDE ON SITE APPROVED STAMPED AND SIGNED SEDIMENTATION AND EROSION CONTROL DRAWINGS BY DEPARTMENT OF HEALTH, WATERSHED PROTECTION DIVISION.
5. REFER TO THE CORRECTIVE ACTION PLAN AND THE DISTRICT OF COLUMBIA'S VOLUNTARY REMEDIATION ACTION PROGRAM AUTHORIZATION FOR TREATMENT OF CONTAMINATED GROUND WATER.

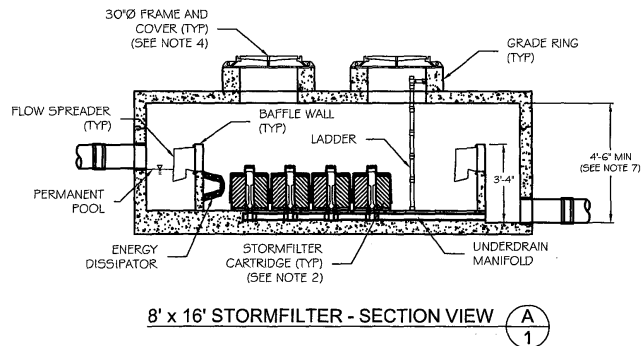
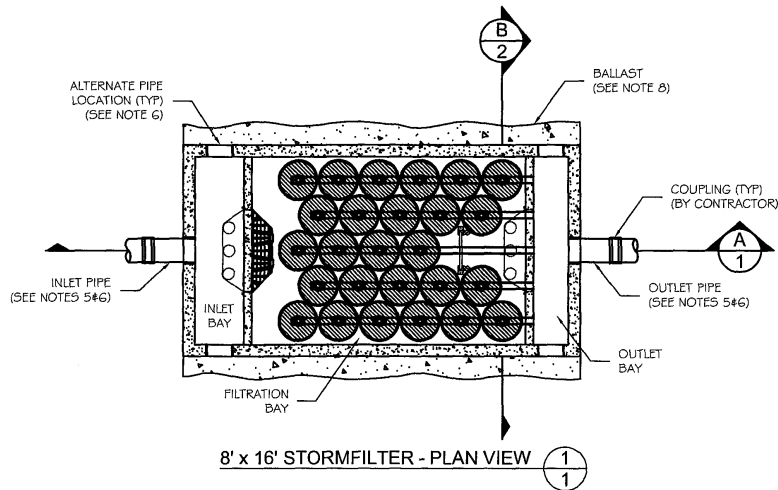
#### DUST CONTROL NOTES:

1. THE CONTRACTOR SHALL CONDUCT OPERATIONS AND MAINTAIN THE PROJECT SITE AS TO MINIMIZE THE CREATION AND DISPERSION OF DUST. DUST CONTROL SHALL BE USED THROUGHOUT THE WORK AT THE SITE.
2. THE CONTRACTOR MUST PROVIDE CLEAN WATER, FREE FROM SALT, OIL, AND OTHER DELETERIOUS MATERIAL TO BE USED FOR ON-SITE DUST CONTROL.
3. THE CONTRACTOR SHALL SUPPLY WATER SPRAYING EQUIPMENT CAPABLE OF ACCESSING ALL WORK AREAS.
4. THE CONTRACTOR SHALL IMPLEMENT STRICT DUST CONTROL MEASURES DURING ACTIVE CONSTRUCTION PERIODS ON-SITE. THESE CONTROL MEASURES WILL GENERALLY CONSIST OF WATER APPLICATIONS THAT SHALL BE APPLIED A MINIMUM OF ONCE PER DAY DURING DRY WEATHER OR MORE OFTEN AS REQUIRED TO PREVENT DUST EMISSIONS.
5. FOR WATER APPLICATION TO UNDISTURBED SOIL SURFACES, THE CONTRACTOR SHALL:
  - A. APPLY WATER WITH EQUIPMENT CONSISTING OF TANK, SPRAY BAR, PUMP WITH DISCHARGE PRESSURE GAUGE.
  - B. ARRANGE SPRAY BAR HEIGHT, NOZZLE SPACING AND SPRAY PATTERN TO PROVIDE COMPLETE COVERAGE OF GROUND WITH WATER.
  - C. DISPERSE WATER THROUGH NOZZLES ON SPRAY BAR AT 20 PSI (137.8 K PA) MINIMUM. KEEP AREAS DAMP WITHOUT CREATING NUISANCE CONDITIONS SUCH AS PONDING.
6. FOR WATER APPLICATION TO SOIL SURFACES DURING DEMOLITION AND/OR EXCAVATION, THE CONTRACTOR SHALL:
  - A. APPLY WATER WITH EQUIPMENT CONSISTING OF A TANK, PUMP WITH DISCHARGE GAUGE, HOSES AND MIST NOZZLES.
  - B. LOCATE TANK AND SPRAYING EQUIPMENT SO THAT THE ENTIRE EXCAVATION AREA CAN BE MISTED WITHOUT INTERFERING WITH DEMOLITION AND/OR EXCAVATION EQUIPMENT OR OPERATIONS. KEEP AREAS DAMP WITHOUT CREATING NUISANCE CONDITIONS SUCH AS PONDING.
  - C. APPLY WATER SPRAY IN A MANNER TO PREVENT MOVEMENT OF SPRAY BEYOND SITE BOUNDARIES.

#### LEGEND:

TEMP CONSTRUCTION ENTRANCE	
WASH RACK	
SILT FENCE	
LIMIT OF DISTURBANCE	
TREE PROTECTION	
INLET PROTECTION	
SEDIMENT TANK	
SUMP PUMP	
APPROXIMATE LIMIT OF BELOW GRADE EXCAVATION	





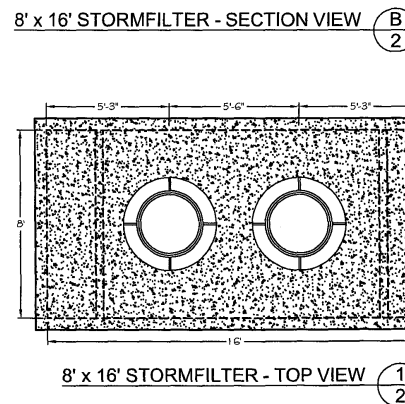
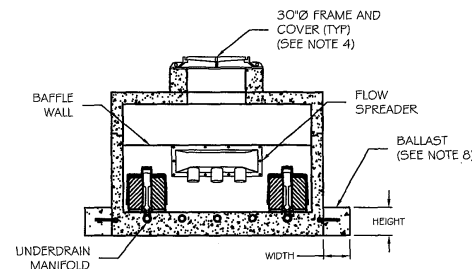
NOTE:  
STORMWATER MANAGEMENT FACILITIES, SEDIMENTATION AND EROSION CONTROLS TO MEET THE REQUIREMENTS OF THE DISTRICT OF COLUMBIA, DEPARTMENT OF ENVIRONMENT, WATERSHED PROTECTION DIVISION AND WILL BE PROVIDED BY MEANS OF STORMFILTERS, OR EQUAL TO BE APPROVED BY DC DEPARTMENT OF ENVIRONMENT.

THE STORMWATER MANAGEMENT  
StormFilter®  
U.S. PATENT No. 5,322,629,  
No. 5,707,527, No. 6,027,639  
No. 6,645,049, No. 5,624,976,  
AND OTHER U.S. AND FOREIGN  
PATENTS PENDING

8' x 16' PRECAST STORMFILTER  
PLAN AND SECTION VIEWS  
STANDARD DETAIL

### GENERAL NOTES

- 1) STORMFILTER BY CONTECH STORMWATER SOLUTIONS; PORTLAND, OR (800) 548-4667; SCARBOROUGH, ME (877) 907-8676; ELK RIDGE, MD (866) 740-3318.
- 2) FILTER CARTRIDGE(S) TO BE SIPHON-ACTUATED AND SELF-CLEANING. STANDARD DETAIL DRAWING SHOWS MAXIMUM NUMBER OF CARTRIDGES. ACTUAL NUMBER REQUIRED TO BE SPECIFIED ON SITE PLANS OR IN DATA TABLE BELOW.
- 3) PRECAST VAULT TO BE CONSTRUCTED IN ACCORDANCE WITH ASTM C857 AND C858. DETAIL DRAWING REFLECTS DESIGN INTENT ONLY. ACTUAL DIMENSIONS AND CONFIGURATION WILL BE SHOWN ON PRODUCTION SHOP DRAWING.
- 4) STRUCTURE AND ACCESS COVERS TO MEET AASHTO H-20 LOAD RATING.
- 5) STORMFILTER REQUIRES 2.3 FEET OF DROP FROM INLET TO OUTLET. IF LESS DROP IS AVAILABLE, CONTACT CONTECH STORMWATER SOLUTIONS.
- 6) INLET AND OUTLET PIPING TO BE SPECIFIED BY ENGINEER AND PROVIDED BY CONTRACTOR. PRECAST STORMFILTER VAULT EQUIPPED WITH EITHER CORED OPENINGS OR KNOCKOUTS AT INLET AND OUTLET LOCATIONS.
- 7) PROVIDE MINIMUM CLEARANCE FOR MAINTENANCE ACCESS. IF A SHALLOWER SYSTEM IS REQUIRED, CONTACT CONTECH STORMWATER SOLUTIONS FOR OTHER OPTIONS.
- 8) ANTI-FLOTATION BALLAST TO BE SPECIFIED BY ENGINEER AND PROVIDED BY CONTRACTOR, IF REQUIRED. BALLAST TO BE SET ALONG ENTIRE LENGTH OF BOTH SIDES OF THE STRUCTURE.
- 9) ALL STORMFILTERS REQUIRE REGULAR MAINTENANCE. REFER TO OPERATION AND MAINTENANCE GUIDELINES FOR MORE INFORMATION.



8' x 16' PRECAST STORMFILTER  
TOP AND SECTION VIEWS, NOTES AND DATA  
STANDARD DETAIL

8' x 16' PRECAST STORMFILTER DATA			
STRUCTURE ID	XXXX		
WATER QUALITY FLOW RATE (cfs)	X.XX		
PEAK FLOW RATE (cfs)	X.XX		
RETURN PERIOD OF PEAK FLOW (yrs)	XXXX		
# OF CARTRIDGES REQUIRED	XX		
CARTRIDGE FLOW RATE (1.5 OR 7.5 gpm)	XX		
MEDIA TYPE (CSF, PERLITE, ZPG)	XXXXXX		
PIPE DATA:	I.E.	MATERIAL	DIAMETER
INLET PIPE #1	XXXX.XX"	XXX	XX"
INLET PIPE #2	XXXX.XX"	XXX	XX"
OUTLET PIPE	XXXX.XX"	XXX	XX"
RIM			
LADDER	YES/NO		
ANTI-FLOTATION BALLAST	WIDTH	HEIGHT	
	XX"	XX"	
NOTES/SPECIAL REQUIREMENTS:			

THE STORMWATER MANAGEMENT  
StormFilter®  
U.S. PATENT No. 5,322,629,  
No. 5,707,527, No. 6,027,639  
No. 6,645,049, No. 5,624,976,  
AND OTHER U.S. AND FOREIGN  
PATENTS PENDING

