

D.C. RECEIVED
2007 AUG -7 PM 1:59

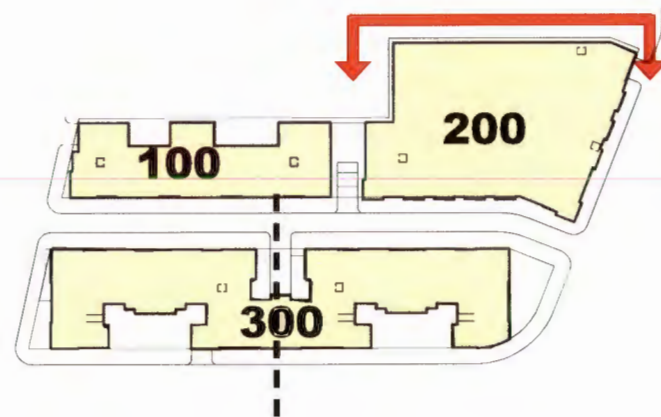
Aug 07, 2007 120



THE PRESTON PARTNERSHIP, LLC
A MULTIDISCIPLINARY DESIGN FIRM
3141 FAIRVIEW PARK DRIVE, SUITE 415
FALL CHURCH, VA, 22042
www.theprestonpartnership.com

NORTH ELEVATION
(BUILDING 100)
ECKINGTON ONE
WASHINGTON, D.C.

ZONING COMMISSION
District of Columbia
CASE NO. 05-23A
EXHIBIT NO. 13
ZONING COMMISSION
District of Columbia
CASE NO. 05-23A
EXHIBIT NO. 13
TRAMMELL CROW RESIDENTIAL



RECEIVED
D.C. OFFICE
2017 AUG -7 PM 1:59

Aug 07, 2007 121



THE PRESTON PARTNERSHIP, LLC
A MULTIDISCIPLINARY DESIGN FIRM
3141 FAIRVIEW PARK DRIVE, SUITE 415
FALL CHURCH, VA, 22042
www.theprestonpartnership.com

NORTH ELEVATIONS
(BUILDING 200)
ECKINGTON ONE
WASHINGTON, D.C.

TCR
TRAMMELL CROW RESIDENTIAL