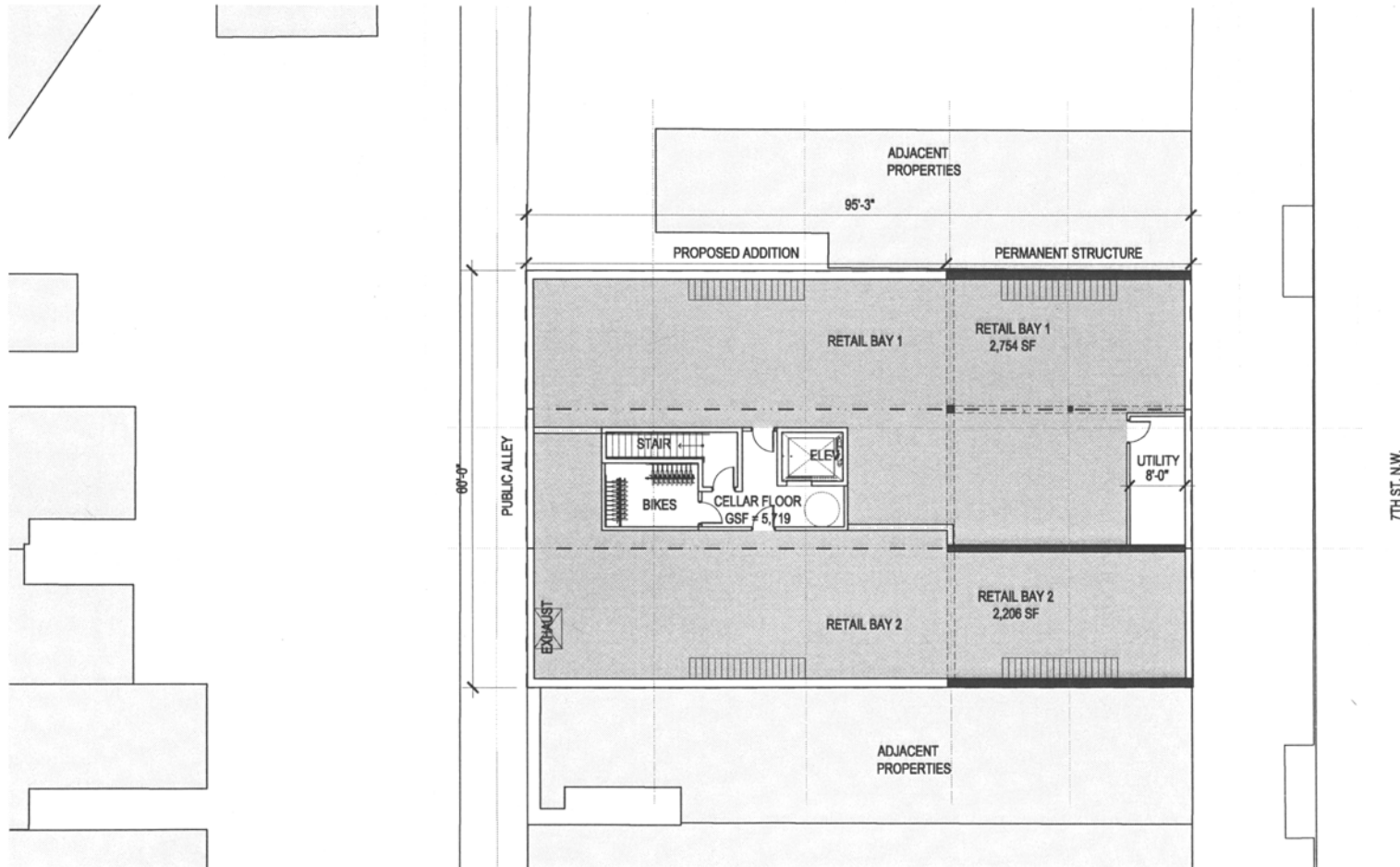


w:\15-0221_1612-1614 7th St NW\Architect\15-0221_1612_1614_Proposed Basement.por.dwg



1 PROPOSED BASEMENT FLOOR PLAN
SCALE: 1/16" = 1'



1612-1616 7TH ST. N.W.

PROPOSED BASEMENT FLOOR PLAN | A-19

1612-1614 7th St. N.W.
Washington D.C.
Square: 420 Lot No: 38 Zone: C-2-A

P&G
ARCHITECTS
P&G Architects, PLLC
210 7th Street SE - Suite 201
Washington, DC 20003
(P) 202-622-5856 (F) 202-622-0608

COPYRIGHT © 2016 P&G ARCHITECTS, PLLC

09/23/2016

Board of Zoning Adjustment
District of Columbia
CASE NO. 19254
EXHIBIT NO. 57