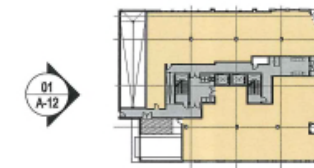
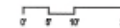


1 SOUTH ELEVATION  
SCALE: 1" = 20'-0"



2 KEY PLAN  
SCALE: 1" = 15'-0"

SOUTH ELEVATION

A-14

12-08-2015

T STREET, NW

T Street, NW  
Washington, DC 20018  
Square: 441 Lot No: 32, 33, 35, 852 Zone: C-2-B / ARTS



PGN Architects, PLLC  
210 7th Street SE - Suite 201  
Washington, DC 20003  
(P) 202-632-2868 (F) 202-632-2868



Monument Realty  
1700 K Street, NW - Suite 800  
Washington, DC 20008  
(P) 202-777-8000 (F) 202-777-8000

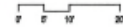
W:\2015\T\_Street\_NW\working\08-2015\A-14.dwg

COPYRIGHT © 2015 PGN ARCHITECTS, PLLC





1 NORTH RENDERED ELEVATION  
SCALE: 1" = 20'-0"



2 KEY PLAN  
SCALE: 1/4" = 10'-0"



NORTH RENDERED ELEVATION | A-16

12-08-2015

T STREET, NW

T Street, NW  
Washington, DC 20018  
Square: 441 Lot No: 32, 33, 35, 352 Zone: C-2-B / ARTS



PGN Architects, PLLC  
210 7th Street NE - Suite 201  
Washington, DC 20003  
(P) 202-462-6800 (F) 202-462-4908



Monument Realty  
1700 K Street, NW - Suite 800  
Washington, DC 20005  
(P) 202-777-2000 (F) 202-777-2020

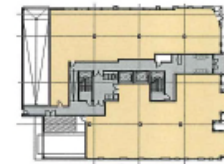
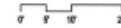
W:\05-2015\T-Street\Architectural\05-2015-01-A-16-01.dwg  
 12/8/2015 10:00:00 AM  
 PGN

COPYRIGHT © 2015 PGN ARCHITECTS, PLLC





1 EAST RENDERED ELEVATION  
SCALE: 1" = 30'-0"



2 KEY PLAN  
SCALE: 1" = 15'-0"

01  
A-15  
EAST RENDERED ELEVATION

A-17

12-08-2015

T STREET, NW

T Street, NW  
Washington, DC 20018  
Square: 411 Lot No: 32, 33, 35, 35Z Zone: C-2-B / ARTS



PGN Architects, PLLC  
210 7th Street SE - Suite 201  
Washington, DC 20003  
(P) 202-422-0565 (F) 202-422-0668



Movement Realty  
1700 K Street, NW - Suite 600  
Washington, DC 20009  
(P) 202-777-3000 (F) 202-777-2000

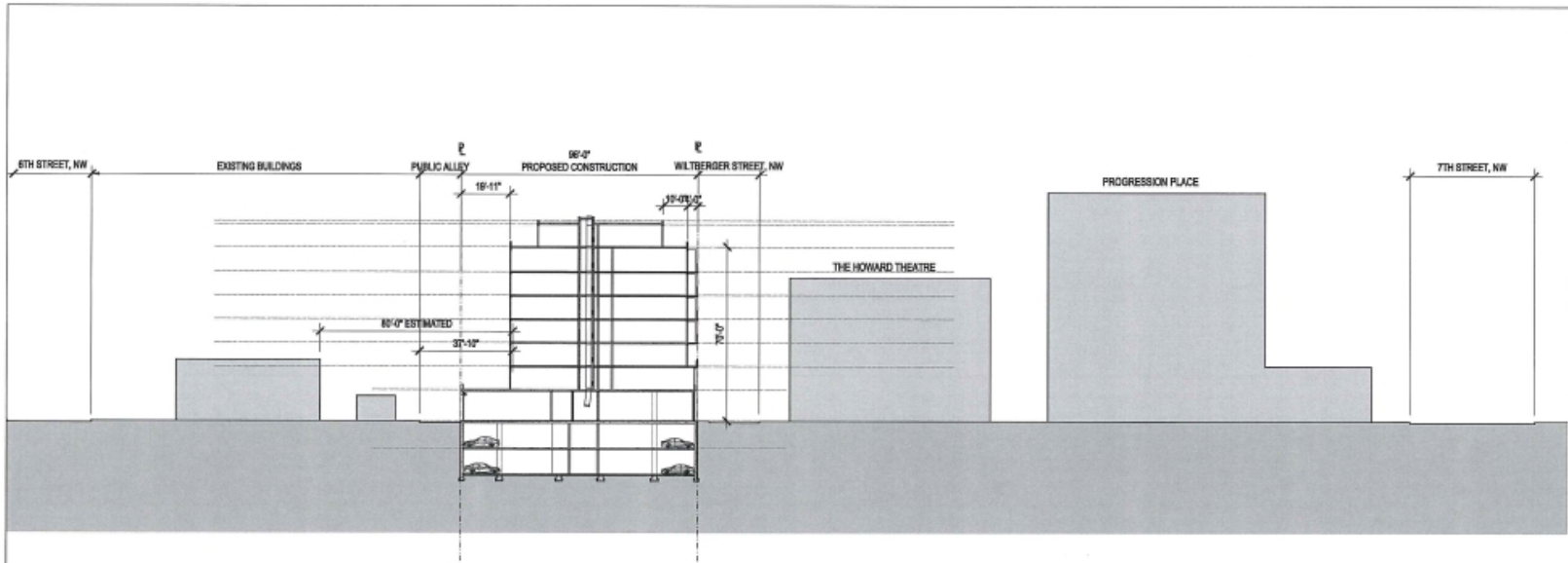
12-08-2015 11:58 AM PGN Architects, PLLC

COPYRIGHT © 2015 PGH ARCHITECTS, PLLC

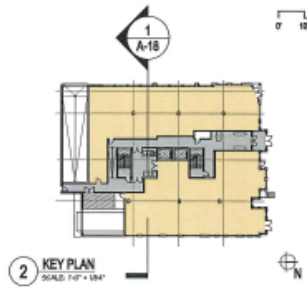








1 STREET SECTION  
SCALE: 1" = 40'-0"



2 KEY PLAN  
SCALE: 1/8" = 10'-0"

STREET SECTION | A-20

12-08-2015

T STREET, NW

T Street, NW  
Washington, DC 20018  
Square: 411 Lot No: 32, 33, 35, 852 Zone: C-2-B / ARTS



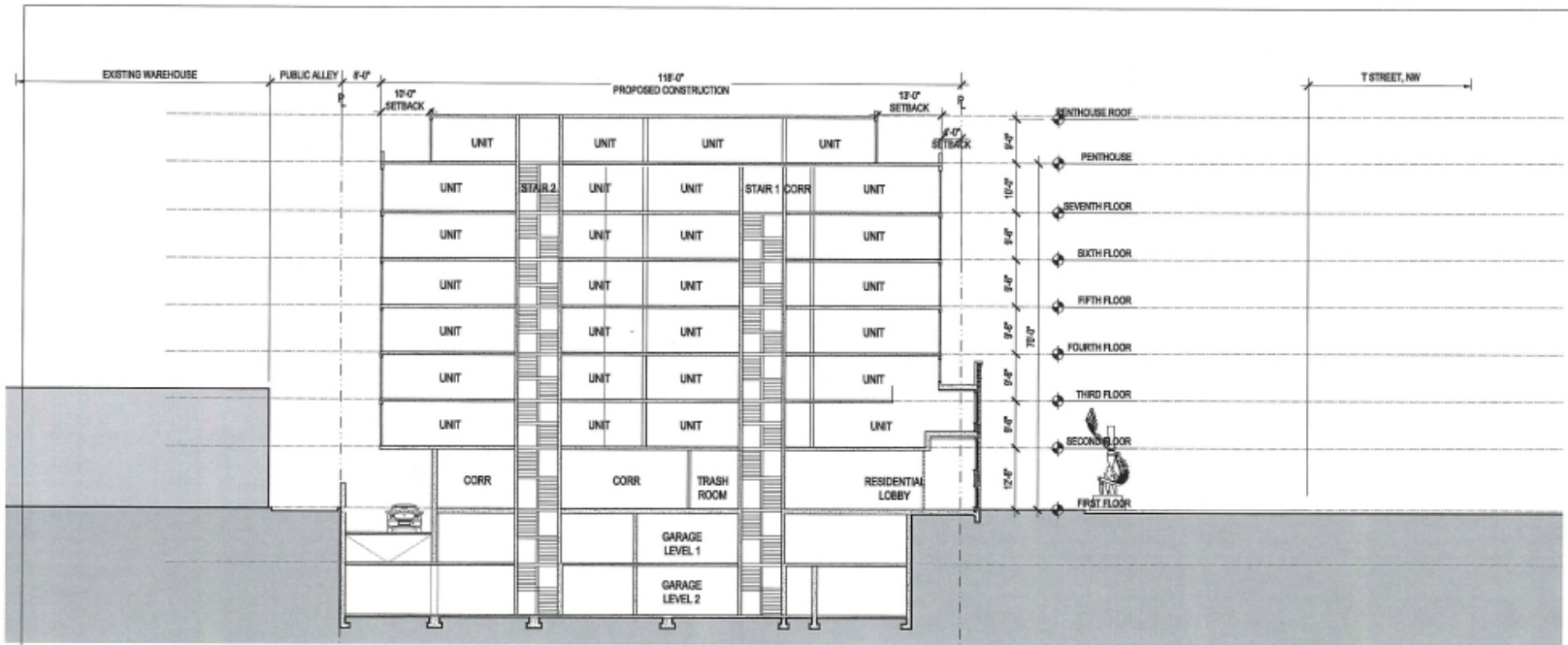
PGN Architects, PLLC  
210 T Street SE - Suite 301  
Washington, DC 20003  
(P) 202-632-0968 (F) 202-632-0968



Monument Realty  
1700 K Street, NW - Suite 900  
Washington, DC 20008  
(P) 202-777-2000 (F) 202-777-3020

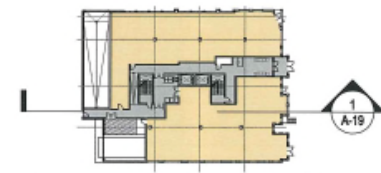
12-08-2015 11:48 AM PGN Architects/PGN/12-08-2015\_11:48 AM PGN Architects/PGN

COPYRIGHT © 2015 PGH ARCHITECTS, PLLC



1 BUILDING SECTION  
SCALE 1" = 20'-0"

0 5 10 20



2 KEY PLAN  
SCALE 1/4" = 16'-0"

BUILDING SECTION A-21

12-08-2015

T STREET, NW

T Street, NW  
Washington, DC 20018  
Square: 441 Lot No: 32, 33, 35, 852 Zone: C-2-B / ARTS



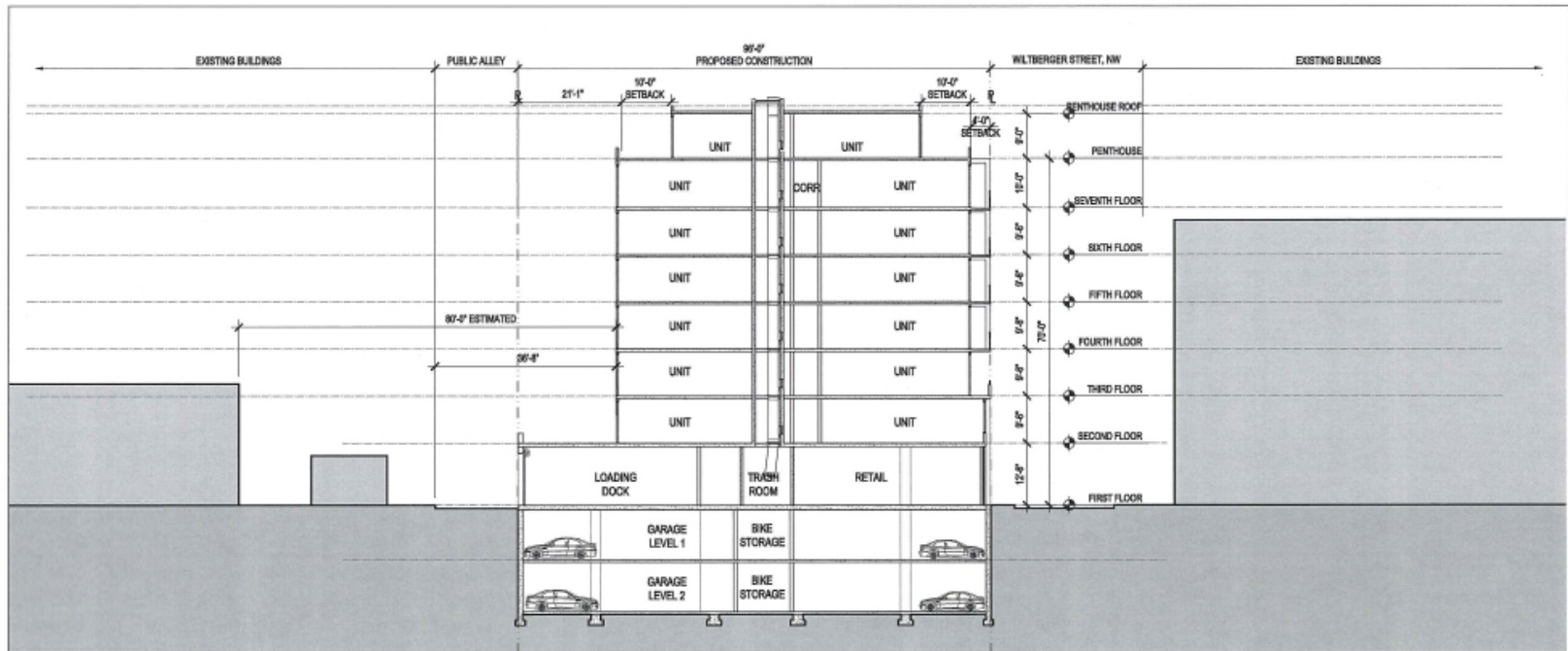
PGN Architects, PLLC  
210 7th Street SE - Suite 201  
Washington, DC 20003  
(P) 202-622-2962 (F) 202-622-2968



Monument Realty  
1700 K Street, NW - Suite 800  
Washington, DC 20005  
(P) 202-777-2500 (F) 202-777-2020

18-0207\_rchdrgn/4/wyng/2015/02/02/18-0207\_18\_0207.dwg

Copyright © 2015 PGN Architects, PLLC



1 BUILDING SECTION  
SCALE: 1/4" = 3'-0"



2 KEY PLAN  
SCALE: 1/4" = 1'-0"

BUILDING SECTION A-22

12-08-2015

T STREET, NW

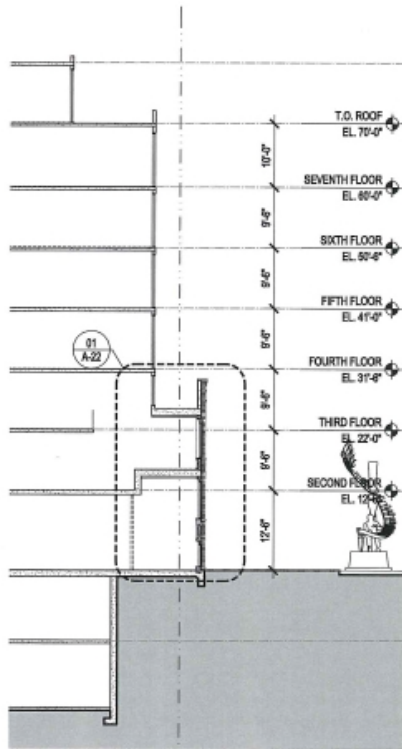
T Street, NW  
Washington, DC 20018  
Square: 441 Lot No: 32, 33, 35, 35Z Zone: C-3-B / ARTS

**PGN**  
ARCHITECTS  
215 7th Street SE - Suite 201  
Washington, DC 20003  
(P) 202-682-2965 (F) 202-682-0908

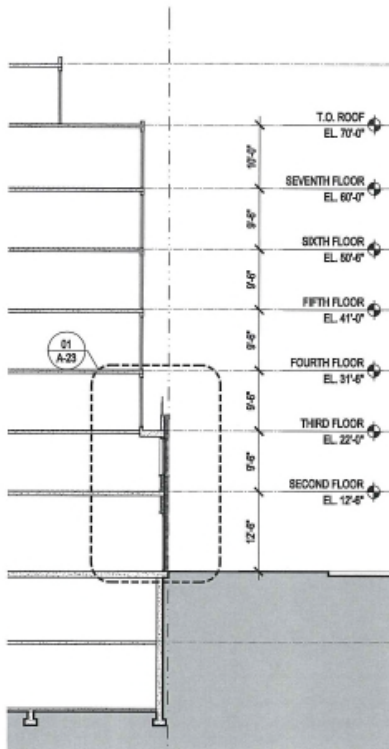
**Blumenthal Realty**  
1700 K Street, NW - Suite 900  
Washington, DC 20006  
(P) 202-777-2500 (F) 202-777-3020

H:\2015\T Street\working\A-22-0001.dwg 12-08-2015 12:08:20 PM

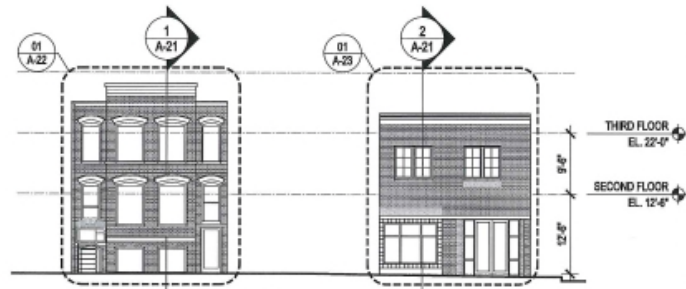
COPYRIGHT © 2015 PGN ARCHITECTS, PLLC



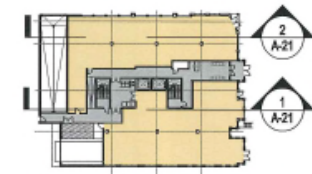
1 EXISTING BUILDING 610 SECTION  
SCALE: 3/8" = 1'-0"



2 EXISTING BUILDING 618 SECTION  
SCALE: 3/8" = 1'-0"



3 EXISTING BUILDING 610 & 618 ELEVATIONS  
SCALE: 3/8" = 1'-0"



4 KEY PLAN  
SCALE: 1/4" = 1'-0"

EXISTING BUILDING HEIGHTS APPROXIMATE

EXISTING BUILDING SECTIONS A-23

12-06-2015

T STREET, NW

T Street, NW  
Washington, DC 20018  
Square: 411 Lot No: 32, 33, 35, 652 Zone: C-2/B / ARTS



PGN Architects, PLLC  
310 7th Street SE - Suite 201  
Washington, DC 20003  
(P) 202-622-2865 (F) 202-622-0968



Document Ready  
1300 K Street, NW - Suite 800  
Washington, DC 20005  
(P) 202-777-3008 (F) 202-777-3020

12-06-2015 12:06:00 PM C:\Users\jacob\Documents\610-618\_T-Street\_NW\610-618\_T-Street\_NW.dwg

COPYRIGHT © 2015 PGN ARCHITECTS, PLLC











1 RENDERING  
SCALE: N/A

T STREET, NW

T Street, NW  
Washington, DC 20018  
Square: 411 Lot Nos: 32, 33, 35, 35Z Zone: C-2-B / ARTS

COPYRIGHT © 2015 PGM AND PGN, LLC



PGN Architects, PLLC  
210 7th Street SE - Suite 305  
Washington, DC 20003  
(P) 202-833-8895 (F) 202-833-0806



Morsement Realty  
1700 K Street, NW - Suite 600  
Washington, DC 20005  
(P) 202-777-3000 (F) 202-777-3009



