

# 1772 CHURCH STREET NW

BOARD OF ZONING ADJUSTMENT - ADDITIONAL EXHIBITS  
DECEMBER 1<sup>ST</sup>, 2015

**PROJECT TEAM:**

**OWNER:** CAS RIEGLER  
1010 WISCONSIN AVE. NW  
WASHINGTON, DC 20001  
(202) 215-6588

ST. THOMAS' PARISH EPISCOPAL  
CHURCH  
1772 CHURCH ST, NW  
WASHINGTON, DC 20036  
(202) 332-0607

**ARCHITECT:** HICKOK COLE ARCHITECTS  
1023 31ST STREET, NW  
WASHINGTON, DC 20007  
(202) 667-9776

**SHEET LIST:**

CS-01	COVER SHEET
A1.01	GROUND FLOOR
A1.02	TYPICAL FLOOR PLAN
A1.03	TYPICAL FLOOR PLAN
A1.04	PARKING PLAN



ST. THOMAS' PARISH  
EPISCOPAL CHURCH • DUPONT CIRCLE



CAS Riegler  
VALUE | URBAN | CHARACTER

Hickok Cole  
Board of Zoning Adjustment  
District of Columbia  
CASE NO. 19133  
EXHIBIT NO. 25  
ARCHITECTS

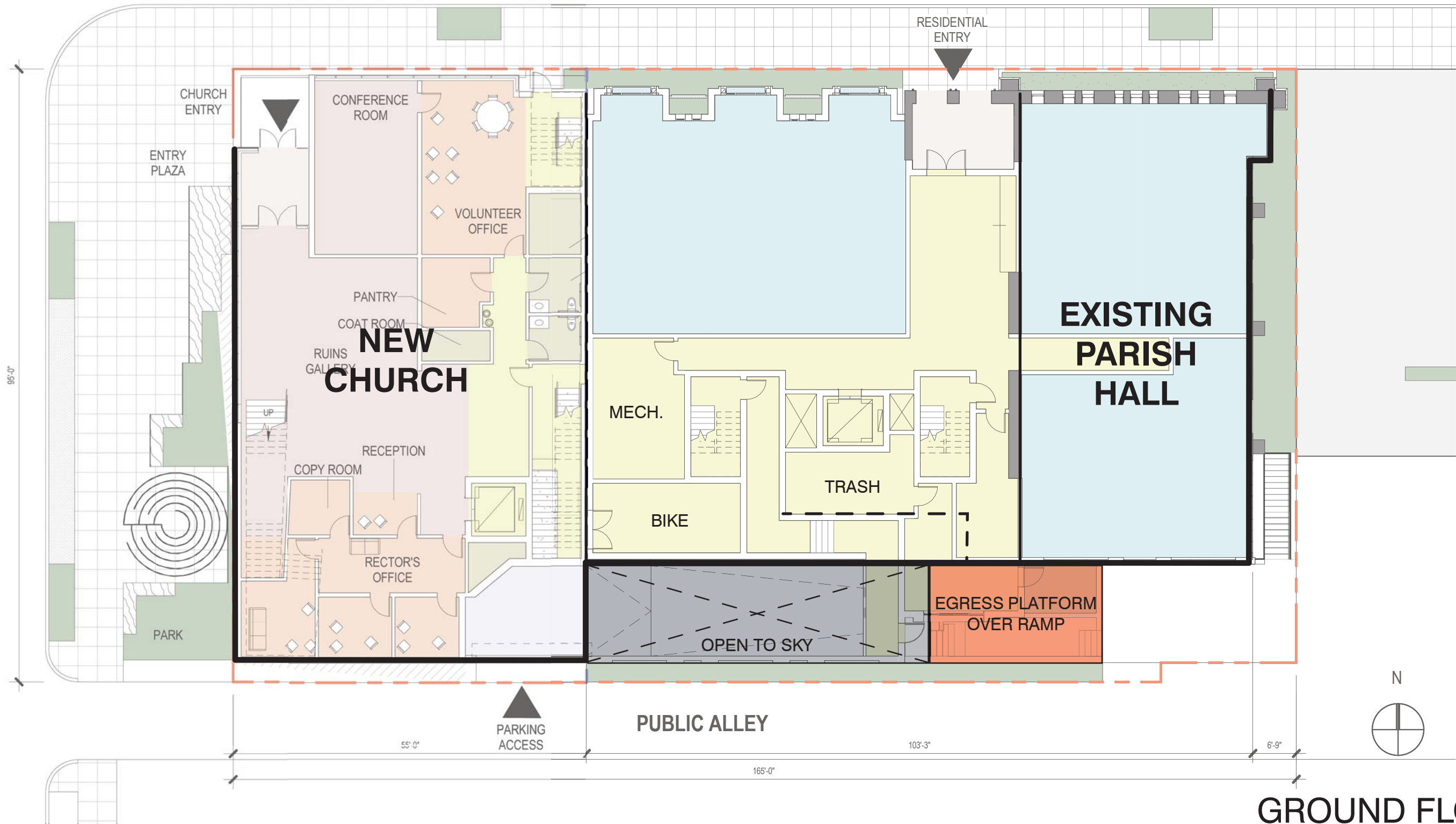


CHURCH ST. NW

CHURCH GROUND FLOOR

RESIDENTIAL GROUND FLOOR

18th ST. NW



GROUND FLOOR PLAN

ST. THOMAS' PARISH EPISCOPAL CHURCH / 1772 CHURCH ST. NW

2015-12-01



Scale Hickok Cole  
1/16" = 1'

A1.02 ARCHITECTS



TYPICAL FLOOR PLAN

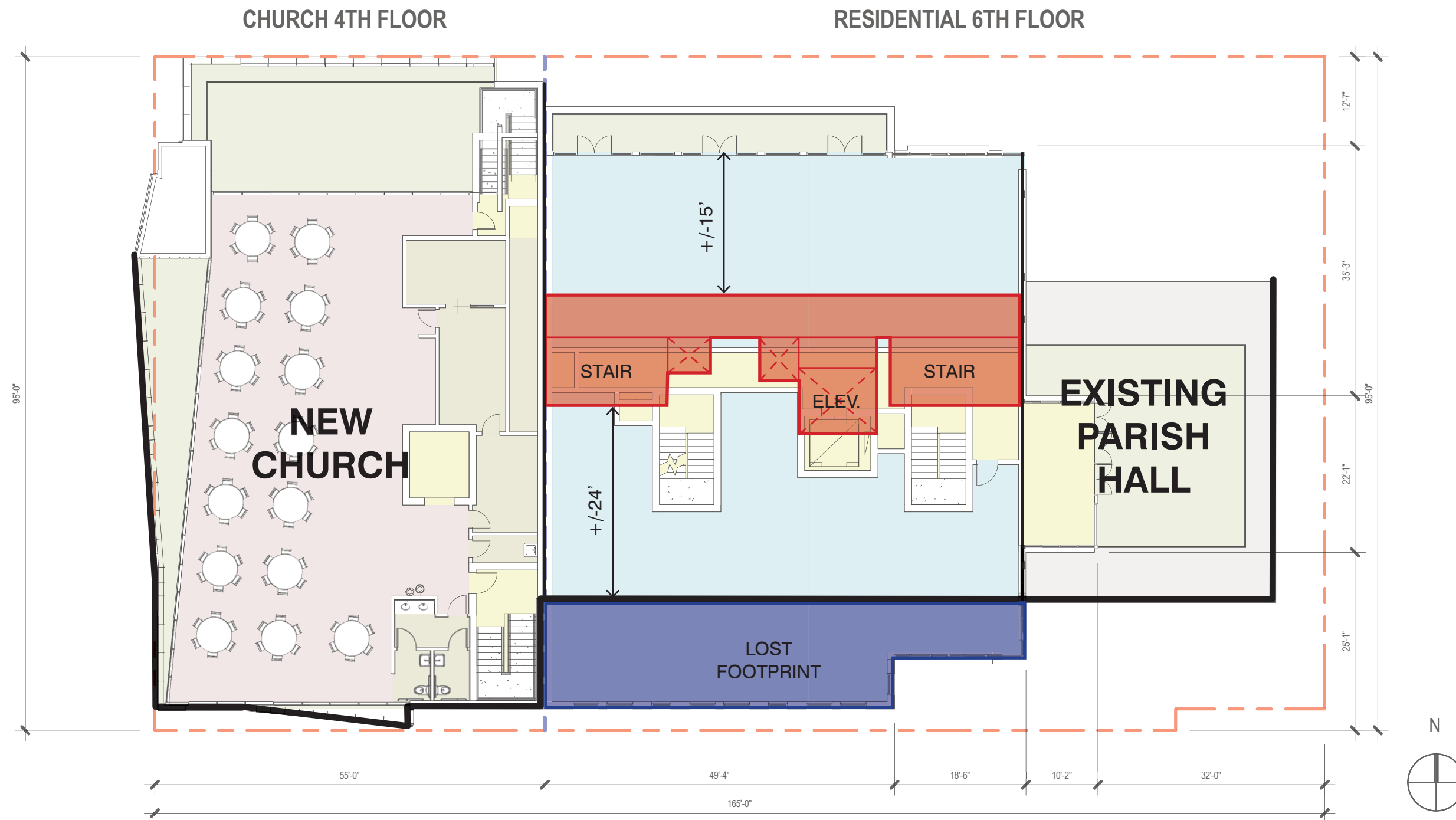
ST. THOMAS' PARISH EPISCOPAL CHURCH / 1772 CHURCH ST. NW

2015-12-01



Scale Hickok Cole  
1/16" = 1'

A1.03 ARCHITECTS



# TYPICAL FLOOR PLAN

**ST. THOMAS' PARISH EPISCOPAL CHURCH / 1772 CHURCH ST. NW**

2015-12-01



Scale Hickok Cole  
1/16" = 1'

**A1.04**



# PARKING PLAN

**ST. THOMAS' PARISH EPISCOPAL CHURCH / 1772 CHURCH ST. NW**

2015-12-01

ST. THOMAS' PARISH  
EPISCOPAL CHURCH • DUPONT CIRCLE

CAS Riegler  
VALUE | URBAN | CHARACTER

Scale Hickok Cole  
1/16" = 1'  
A1.05 ARCHITECTS