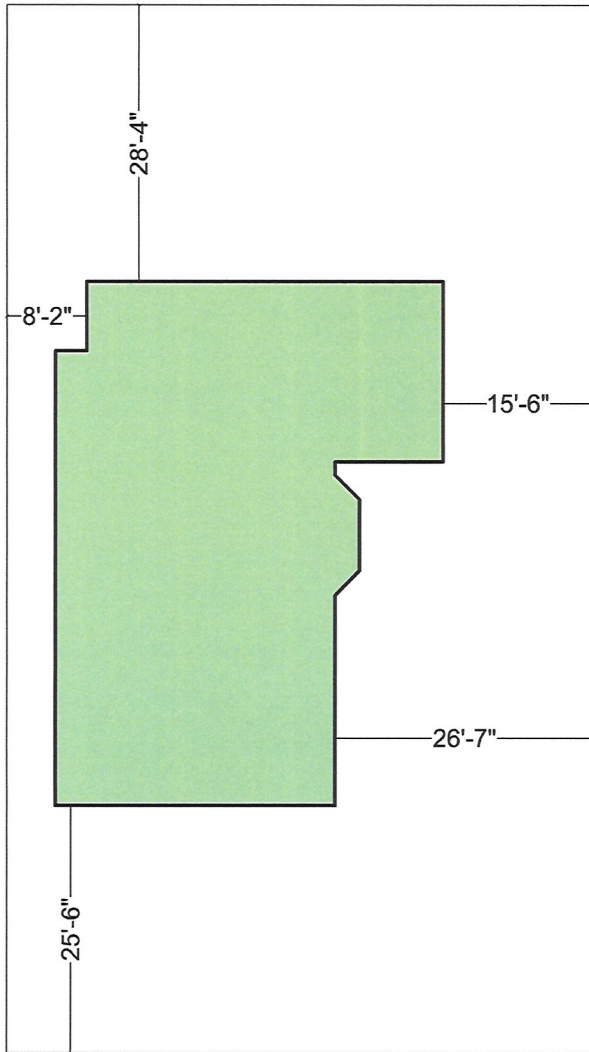
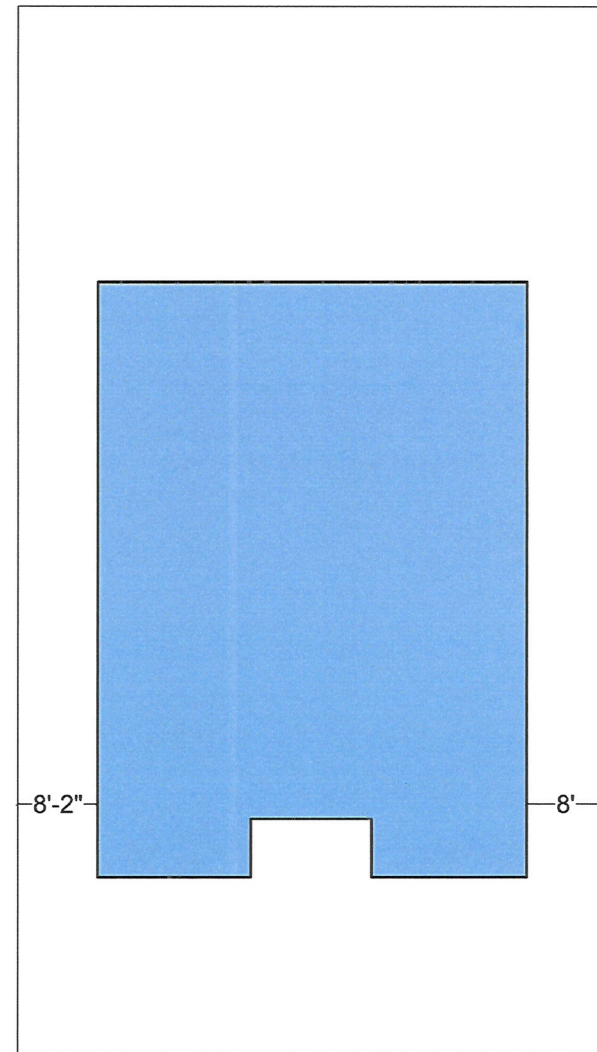


2ND LEVEL

MATTER-OF-RIGHT VS. BUILT



BUILT
(27% Lot Occupancy)

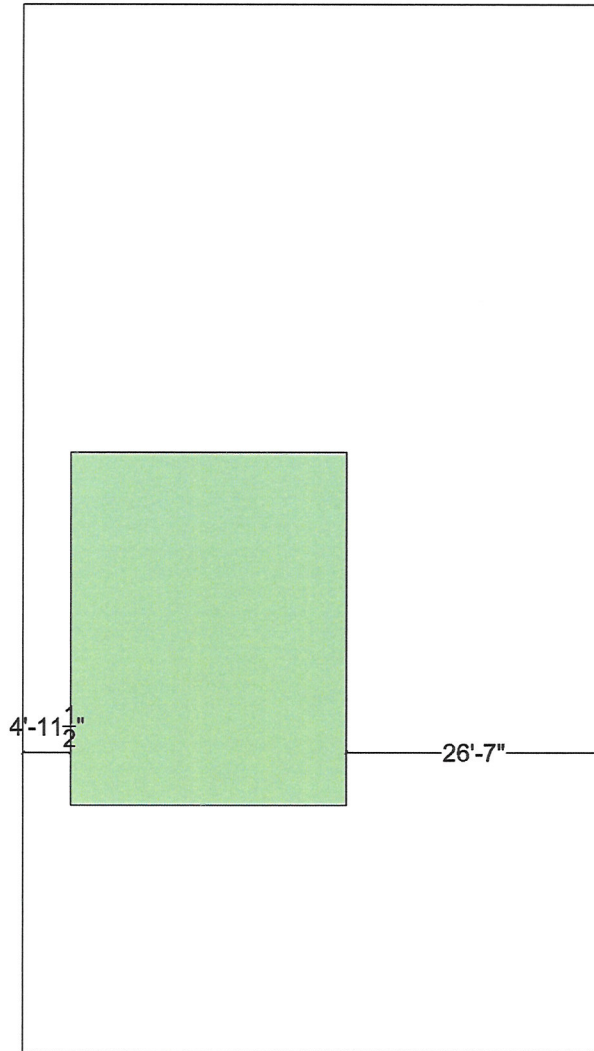


MATTER-OF-RIGHT
(40% Lot Occupancy)

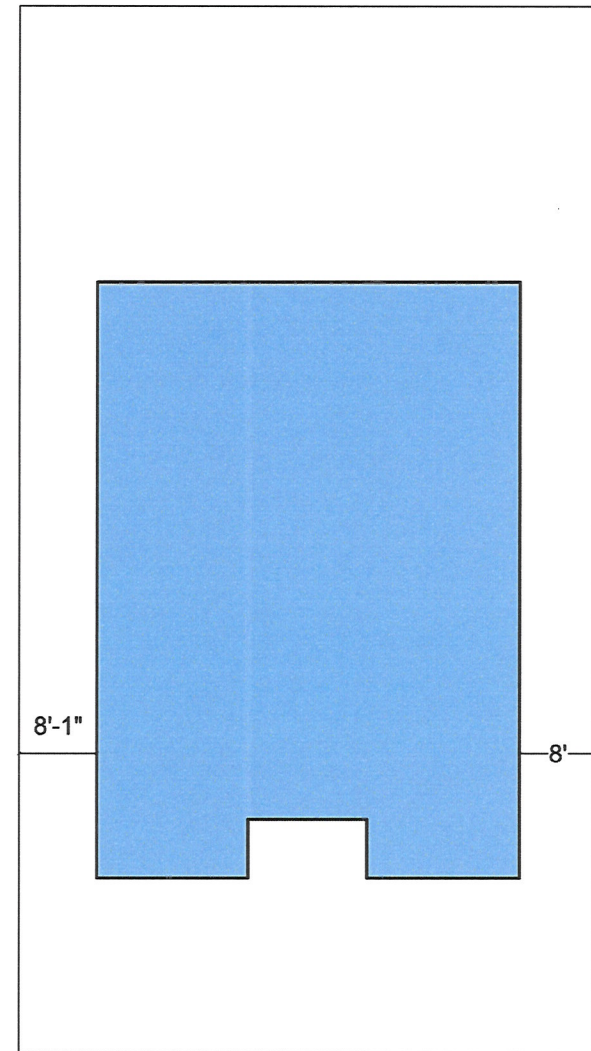
Board of Zoning Adjustment
District of Columbia
CASE NO.18886
EXHIBIT NO.44B

ATTIC LEVEL

MATTER-OF-RIGHT VS. BUILT



BUILT
(16% Lot Occupancy)



MATTER-OF-RIGHT
(40% Lot Occupancy)