

Parkmont School
4842 16th Street, NW
Washington, DC 20011

October 22, 2014

Via Email

District Department of Transportation
55 M Street, SE, Suite 400
Washington, DC 20003
Attention: Ms. Evelyn Israel
evelyn.israel@dc.gov

Re: BZA Application No. 18850 (Parkmont School, Inc.)

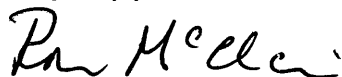
Dear Ms. Israel:

Per your request, please see below and attached certain information relating to Parkmont School, Inc., located at 4842 16th Street NW, Washington DC 20011 (Parkmont School) in connection with its application to the Board of Zoning Adjustment application no. 18850.

- 1) Operating Hours for Parkmont School: School year operating hours are 8:00 a.m. to 4:30 p.m. Monday to Friday. Summer hours are 8:30 a.m. to 3:00 p.m. Monday to Friday.
- 2) Mode Split Transportation Survey: Attached as Attachment A to this letter is a mode split transportation survey conducted by Parkmont School personnel on Tuesday, October 7, 2014, recording to the best of our ability the entry and exit from the property of all persons between the hours of 7:00 a.m. to 10:00 a.m., and between the hours of 3:00 p.m. to 6:00 p.m.
- 3) Carpool Drop-Off / Pick-up Area: Parkmont School students who arrive/depart by car are dropped-off and picked up on the 4800 block of Blagden Street, NW, near the rear entrance of the school. See depiction on Attachment B to this letter. It is our experience that of the school's 63 enrolled students, approximately 22 to 33 students are dropped off in the morning between 7:45 a.m. and 9:00 a.m. with a smaller number picked up between 3:30 p.m. and 4:30 p.m., the parent car line does not extend past the school property, and there are no more than 3 or 4 parent cars next to the school at any one time.

Please do not hesitate to contact me via the contact information below, or Will Yavinsky of Hogan Lovells at william.yavinsky@hoganlovells.com or 202.637.6540, should you have any questions or require additional information in connection with your evaluation.

Very truly yours,



Ron McClain, Head of School
202.882.1300; rmcclain@parkmont.org

Attachments

cc: Maxine Brown-Roberts, AICP, DC Office of Planning
Stephen Varga DC Board of Zoning Adjustment
William Yavinsky, Hogan Lovells US LLP

Board of Zoning Adjustment
District of Columbia
CASE NO.18850
EXHIBIT NO.28

Attachment A

Mode Split Transportation Survey

(Please see attached.)

Mode Split
Prepared for DC Department of Transportation
By Parkmont School, Inc. (4842 16th Street NW, Washington, DC 20011)
BZA Application No. 18850

Date Recorded: 10/7/14

Weather Conditions: Sunny/Cloudy

Recorded By: Rose/Matt

Time	In				Out			
	Car (# cars and passengers)	Bus (bus line)	Bike	Other Pedestrian	Car (# cars and passengers)	Bus (bus line)	Bike	Other Pedestrian
7:00 - 8:00am		7*	1	1				
8:00 - 9:00am	33 (29 cars)	14*	3	4				
9:00 - 10:00am		1*	0	1				
3:00 - 4:00pm					19 (17 cars)	19*	3	0
4:00 - 5:00pm					7	8*	1	3
5:00 - 6:00pm					0	1*	0	2

* The bus line on 16th street is S2/S4. All bus riders to Parkmont take this line.

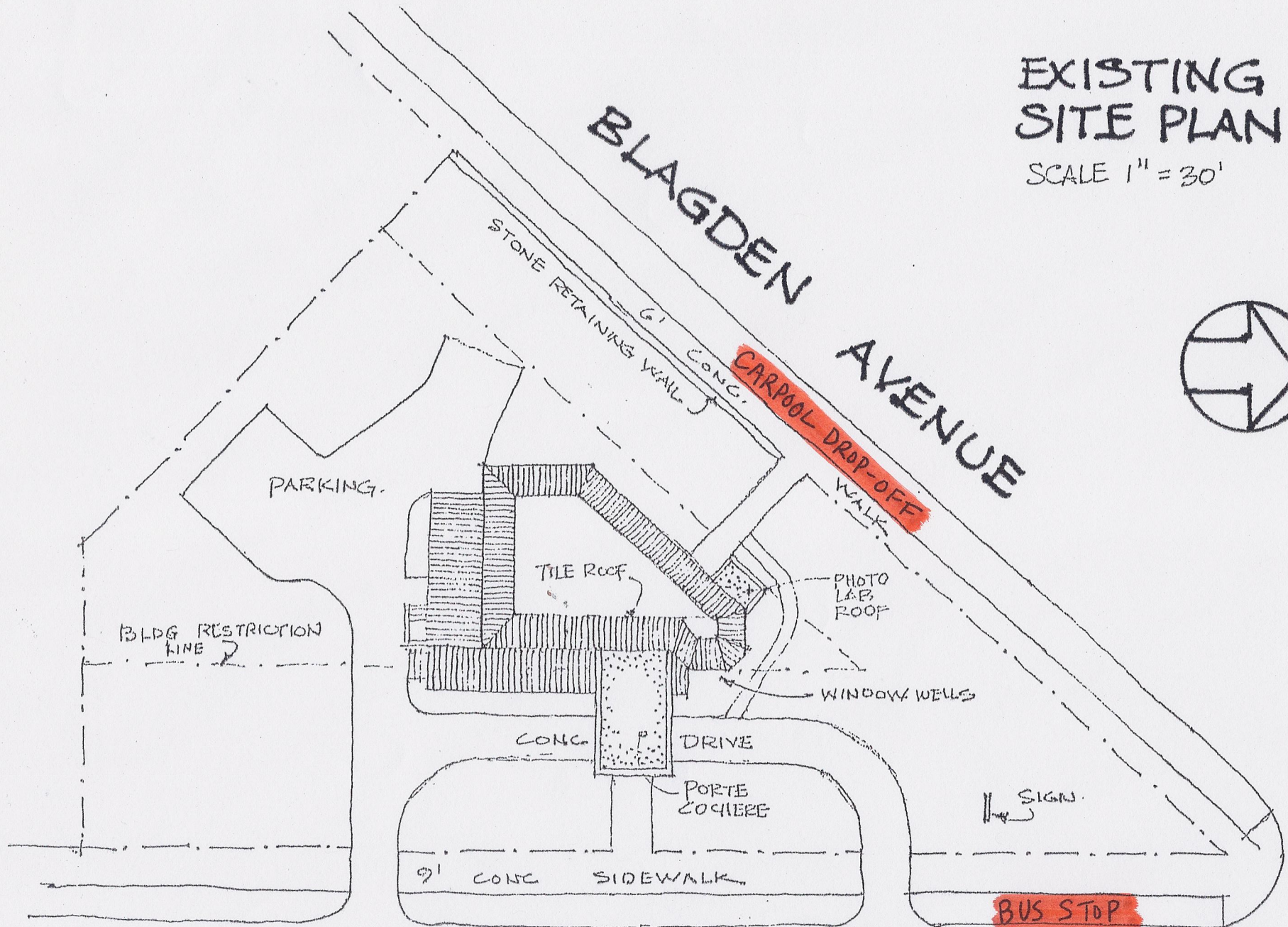
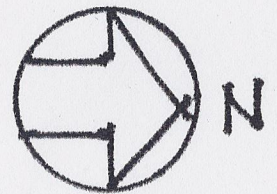
Attachment B

Carpool Drop-off / Pick-up Area

(Please see attached.)

EXISTING SITE PLAN

SCALE 1" = 30'



SIXTEENTH STREET

4842 16TH ST NW