

JAN 15

BOARD OF ZONING ADJUSTMENT
District of Columbia
CASE NO. 18487
EXHIBIT NO. 29

1

2

B

1751 18TH ST NW



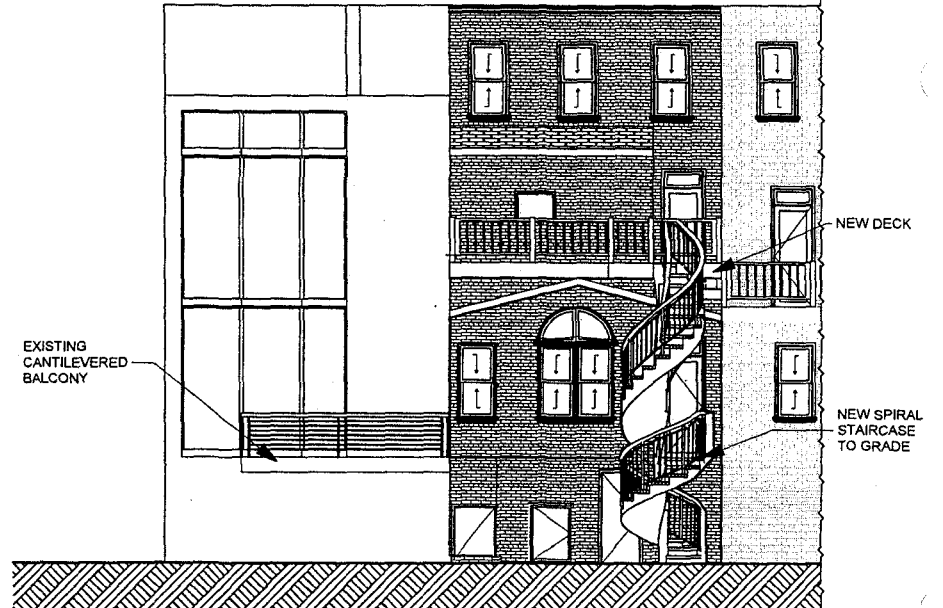
A

2

EXISTING REAR ELEVATION

SCALE: 1/8" = 1'-0"

1751 18TH ST NW



1

PROPOSED REAR ELEVATION

SCALE: 1/8" = 1'-0"

A-201

ELEVATIONS

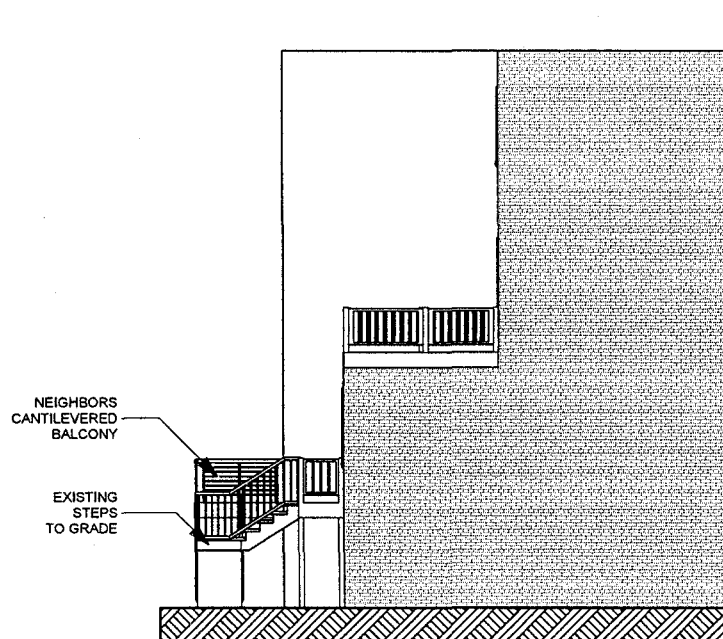
1751 18TH STREET NW
WASHINGTON D.C.

SHEET 3 OF 4

Precision Contracting Solutions
930 Wayne Avenue Suite# 504
Silver Spring, Maryland 20910
Office# 202-362-2420
DC Perm No. 7378

Board of Zoning Adjustment
District of Columbia
CASE NO. 18487
EXHIBIT NO. 29

B



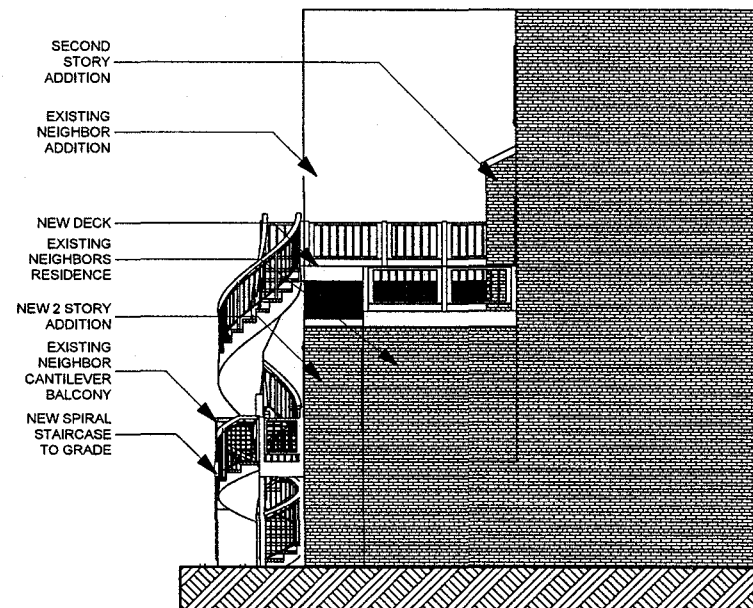
A

2

EXISTING LEFT ELEVATION

SCALE: 1/8" = 1'-0"

2



1

PROPOSED LEFT ELEVATION

SCALE: 1/8" = 1'-0"

A-202

ELEVATIONS

1751 18TH STREET NW
WASHINGTON D.C.

SHEET 4 OF 4

Precision Contracting Solutions
930 Wayne Avenue Suite# 504
Silver Spring, Maryland 20910
Office# 202-362-2420
DC Perm No. 7378