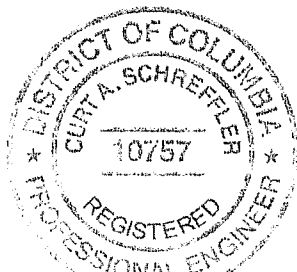


EXHIBIT F: REVISED PROPOSED GRADING/SITE PLAN



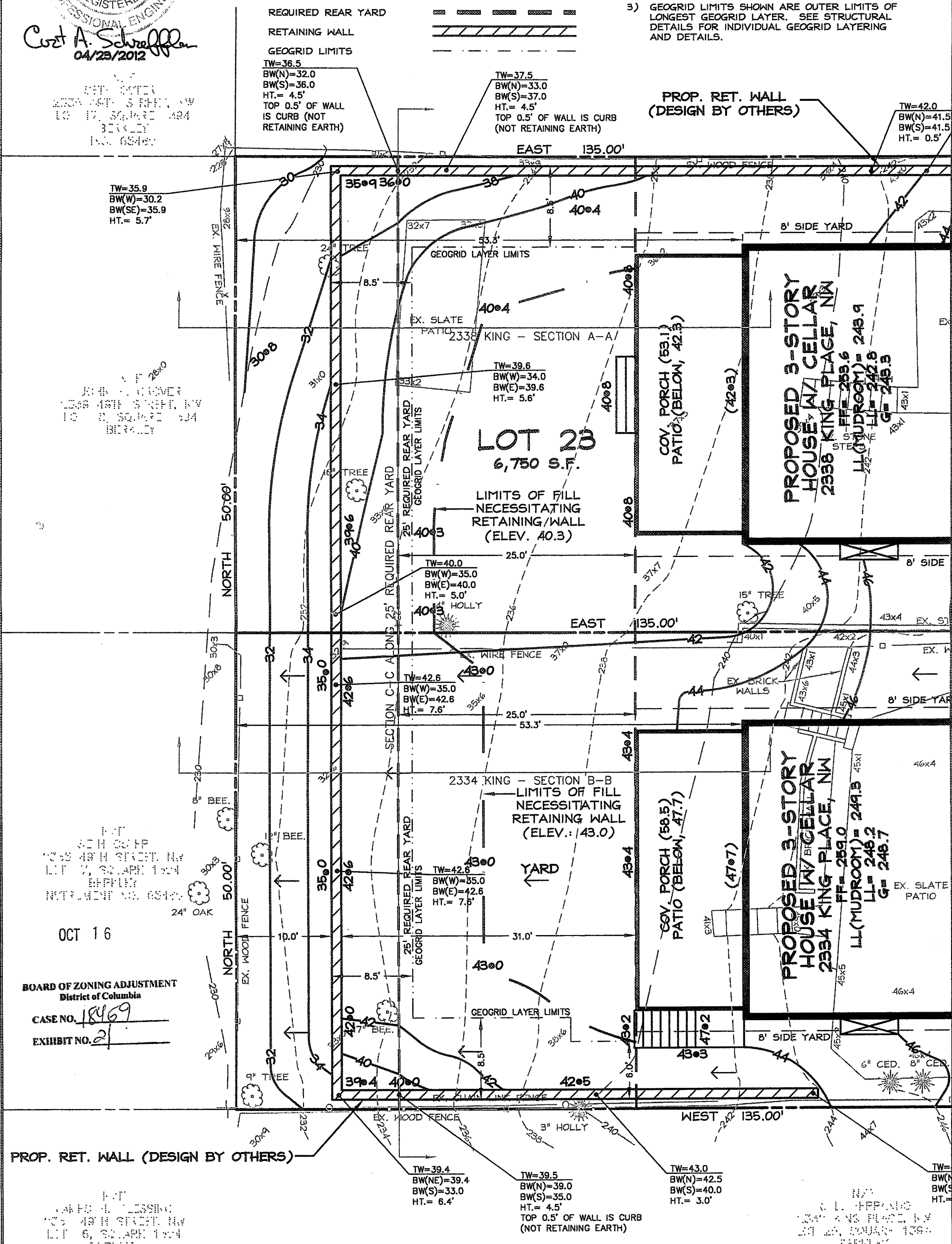
Curt A. Schreffler
04/23/2012

LEGEND:

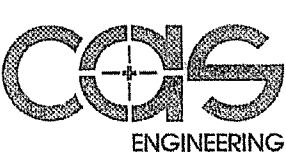
- EXISTING CONTOUR (2-FT.) - - - - -232- - - - -
- EXISTING CONTOUR (10-FT.) - - - - -230- - - - -
- FINISHED CONTOUR (2/10-FT.) (PROPOSED, CURRENT) - - - - -30- - - - -
- REQUIRED REAR YARD - - - - -
- RETAINING WALL - - - - -
- GEOGRID LIMITS - - - - -

GENERAL NOTES:

- 1) TOPOGRAPHIC AND BOUNDARY INFORMATION BASED ON SURVEYS BY CAS ENGINEERING, DATED FEBRUARY, 2011 AND SEPTEMBER, 2011.
- 2) ZONING: R-1-B
- 3) GEOGRID LIMITS SHOWN ARE OUTER LIMITS OF LONGEST GEOGRID LAYER. SEE STRUCTURAL DETAILS FOR INDIVIDUAL GEOGRID LAYERING AND DETAILS.



BOARD OF ZONING ADJUSTMENT
District of Columbia
CASE NO. 18469
EXHIBIT NO. 2



CAS Engineering
108 West Ridgeville Blvd., Ste. 101
Mount Airy, Maryland 21771
301-607-8031 office
301-607-8045 fax
info@casengineering.com

2334 & 2338 KING PLACE, NW
LOTS 23 & 24, SQUARE 1394
BERKLEY

