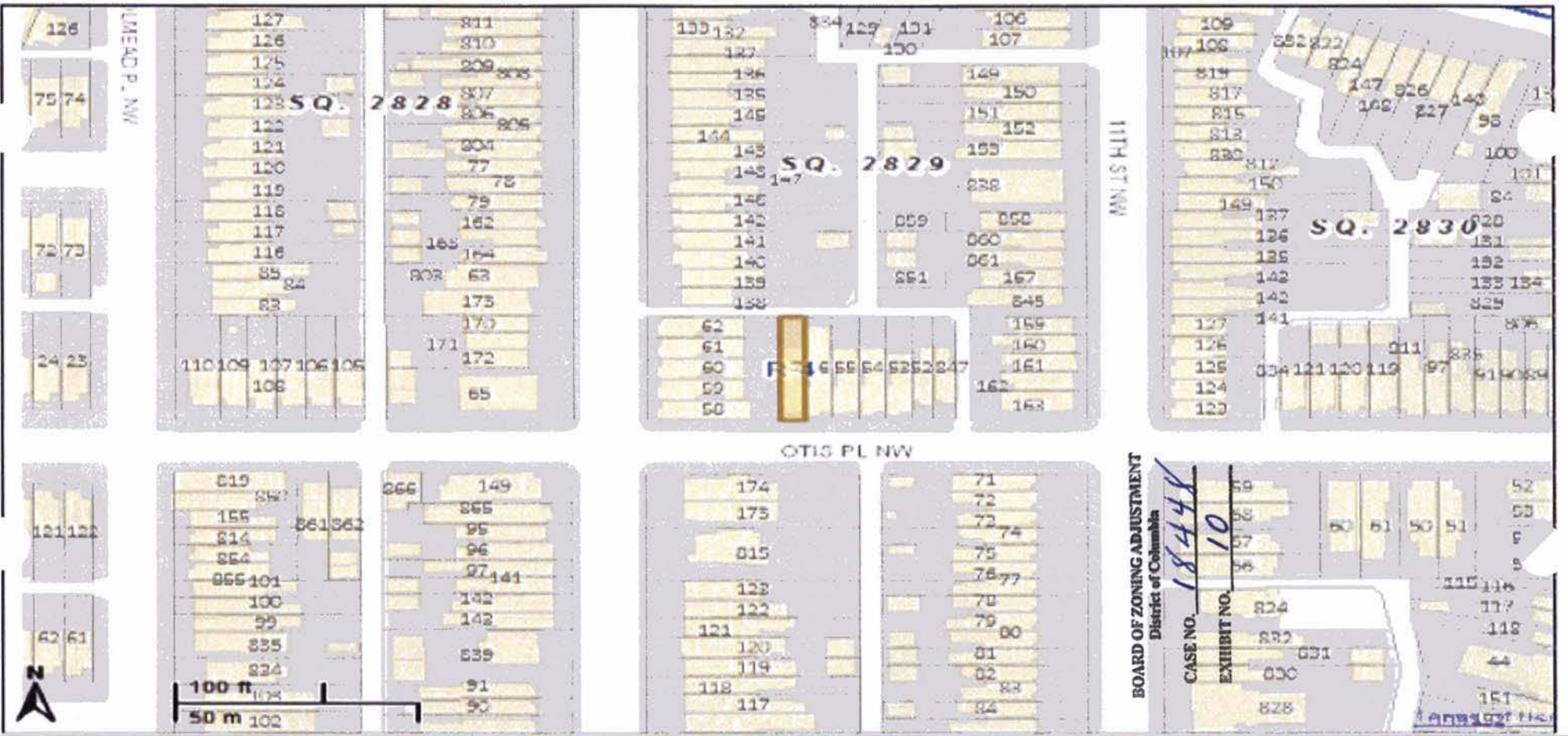




RECEIVED  
 D.C. OFFICE OF ZONING  
 2012 JUL 29 11:41 AM  
**Zoning Report for Square: 2829 Lot: 0057**  
 June 22, 2012



**Zoning Layers**

- Zone Districts
- Pending PUDs
- CEA
- PUDs
- Campus Plans
- Historic Districts
- Overlays
- TDRs

Latitude: 38 934775. Longitude: -77 029292

Board of Zoning Adjustment  
 District of Columbia  
 CASE NO.18448  
 EXHIBIT NO.10