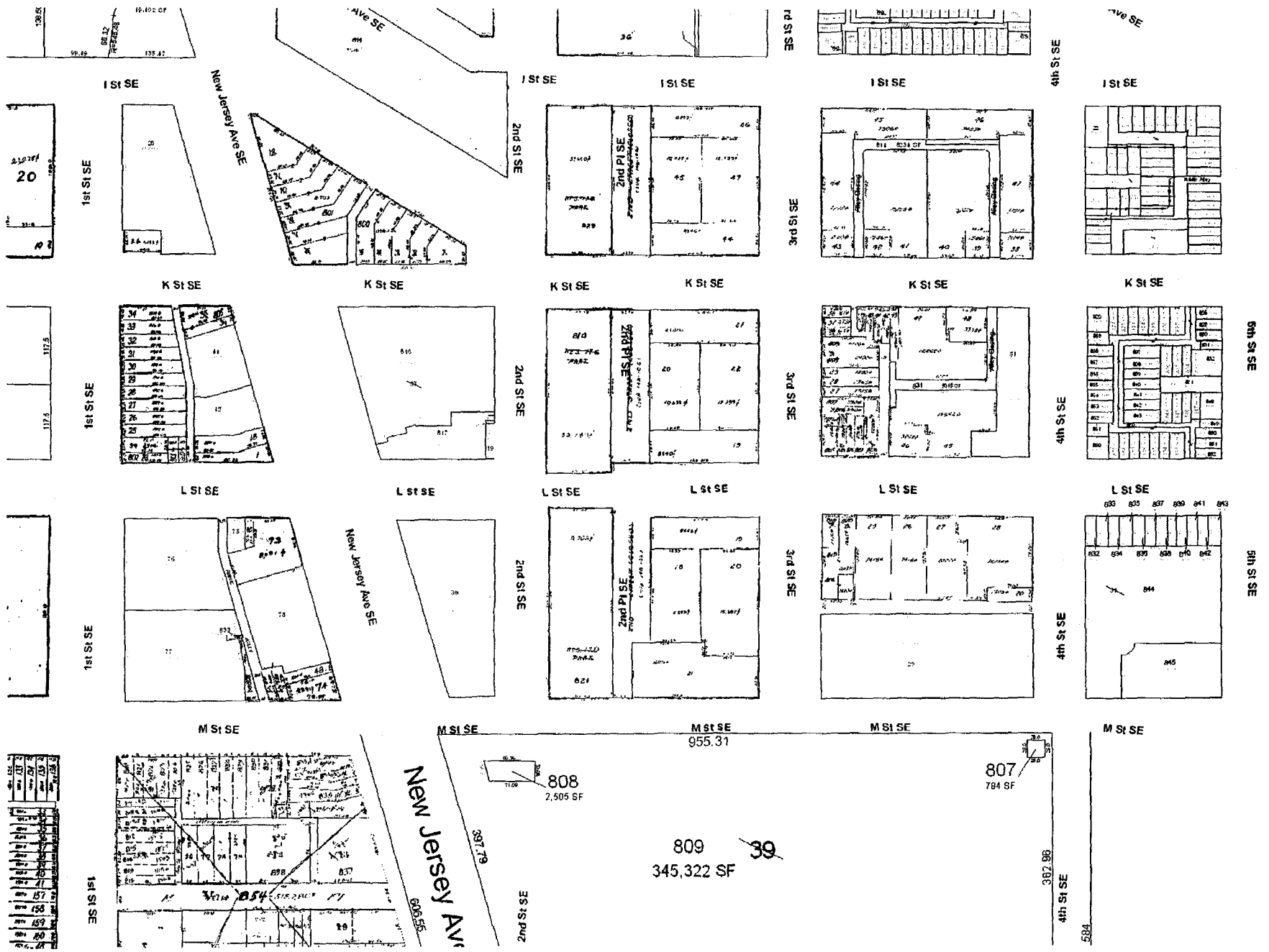
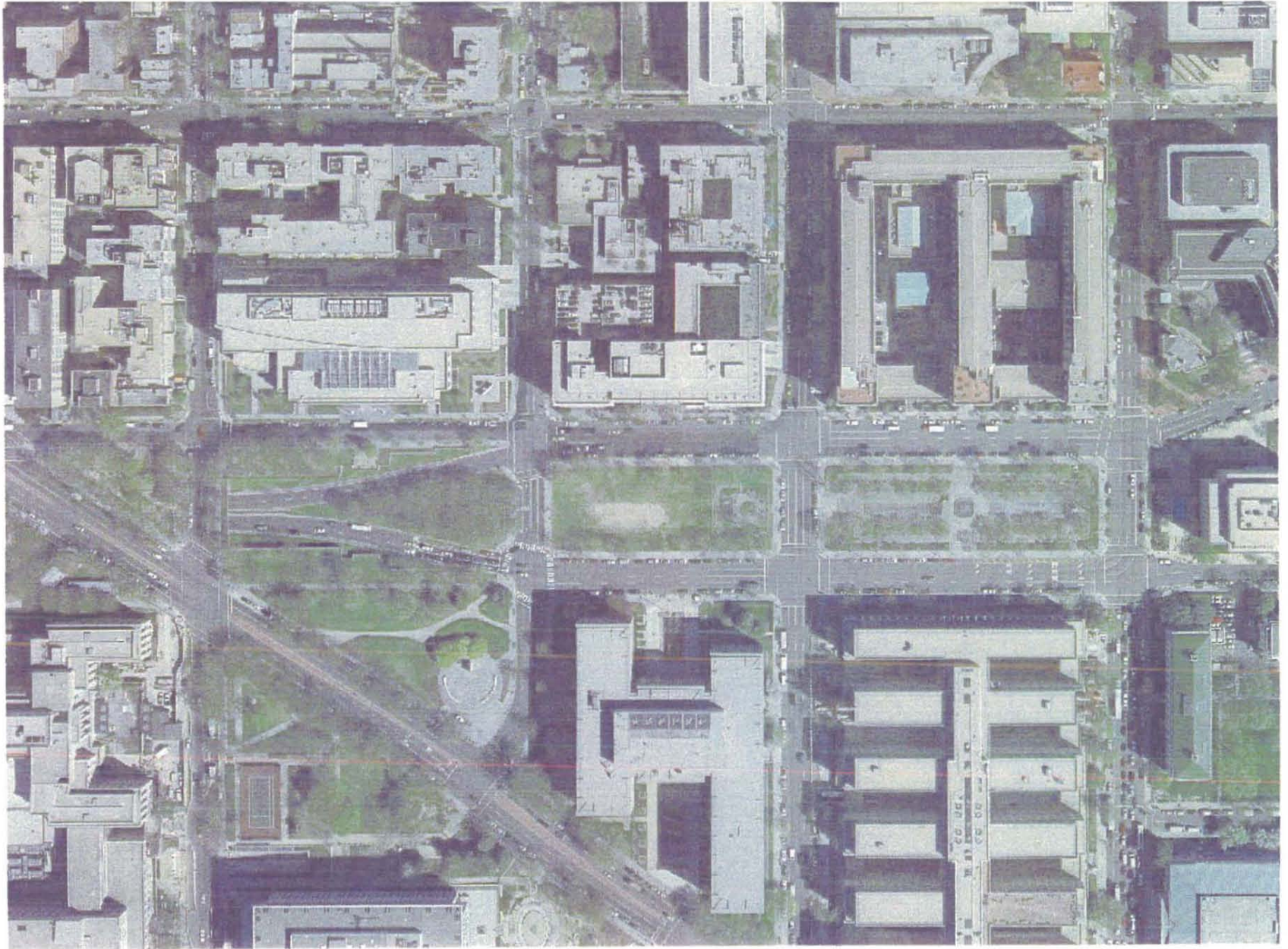


Canal Blocks Park (2nd Street between I and M Streets, SE, including parts of Reservation 17)

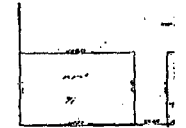
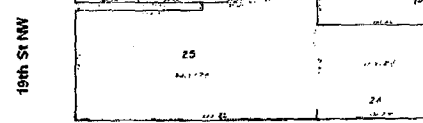
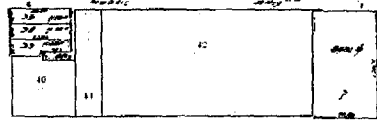
ZONING COMMISSION
District of Columbia
CASE NO.03-12F/03-13F
EXHIBIT NO.32M



Canal Blocks Park (2nd Street between I and M Streets, SE, including parts of Reservation 17)



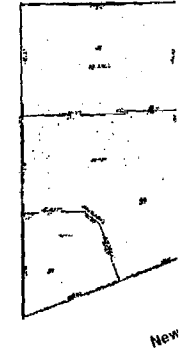
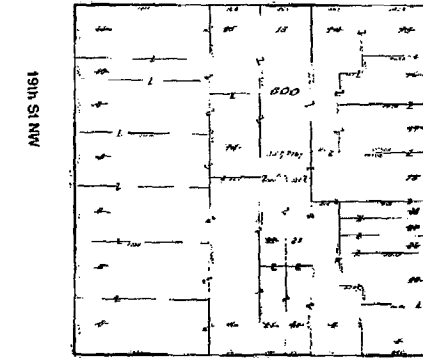
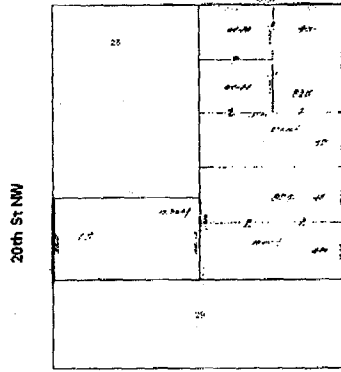
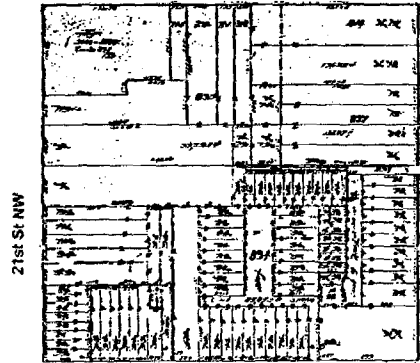
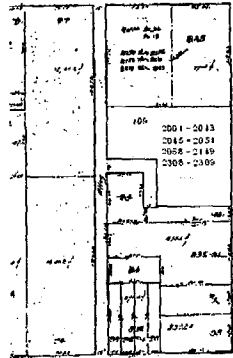
Rawlings Park (E Street between 18th and 20th Streets, NW, including parts of Reservations 13 and 715)



F St NW

F St NW

F St NW

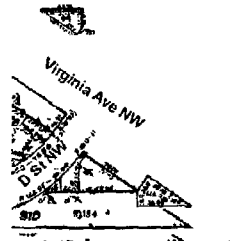


E St NW

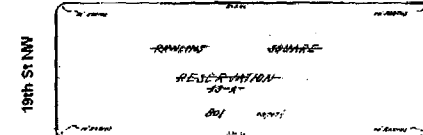
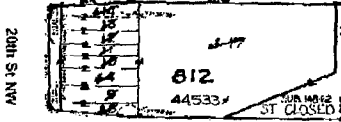
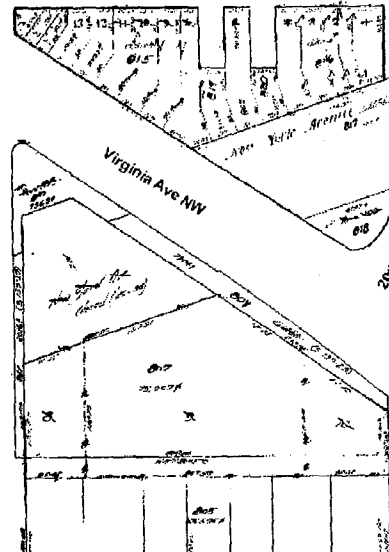
E St NW

E St NW

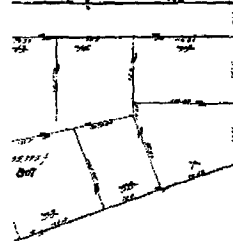
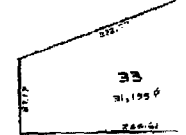
Rawlings Sq NW



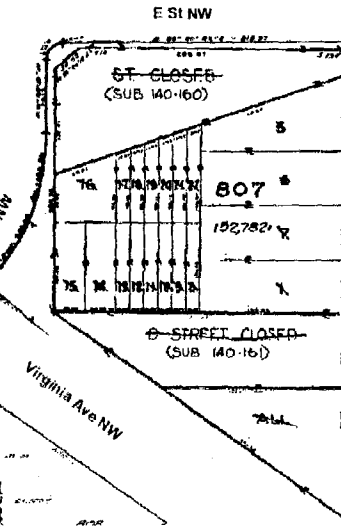
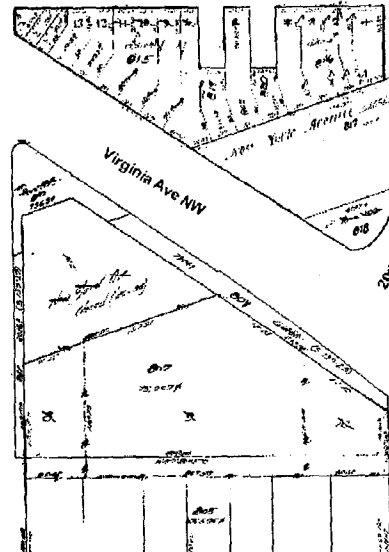
21st St NW



18th St NW

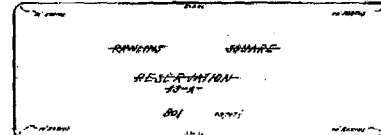


21st St NW



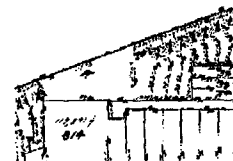
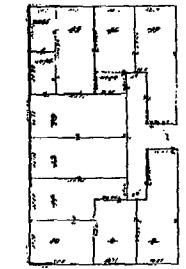
E St NW

19th St NW

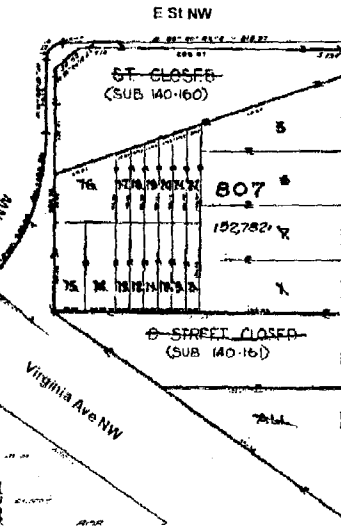
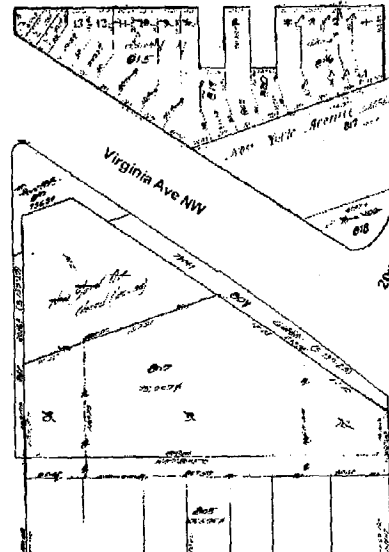


E St NW

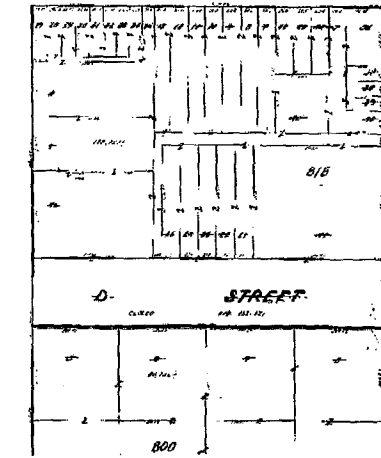
18th St NW



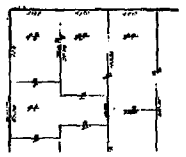
21st St NW



19th St NW



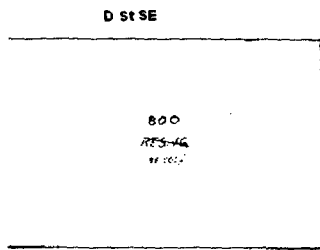
18th St NW



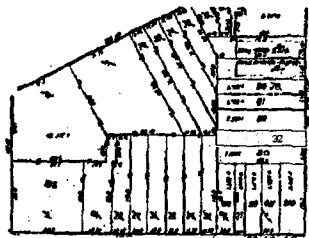
Rawlings Park (E Street between 18th and 20th Streets, NW, including parts of Reservations 13 and 715)



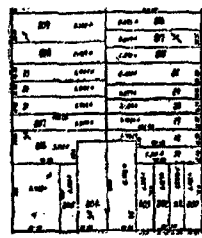
Marion Park (E Street between 4th and 6th Streets, SE, including Reservation 18)



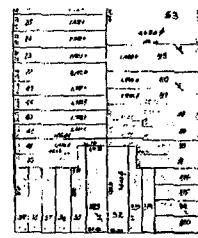
3rd St SE



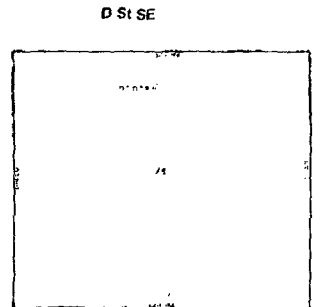
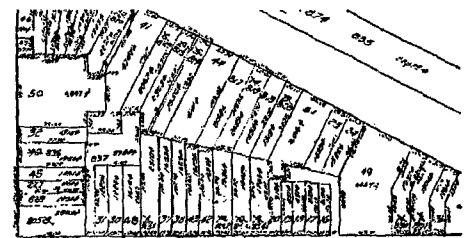
4th St SE



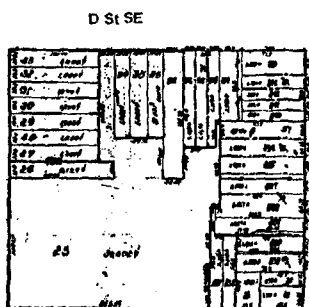
5th St SE



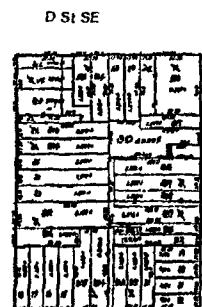
6th St SE



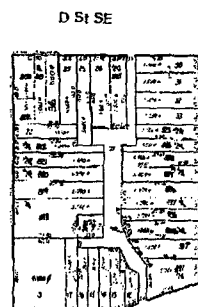
3rd St SE



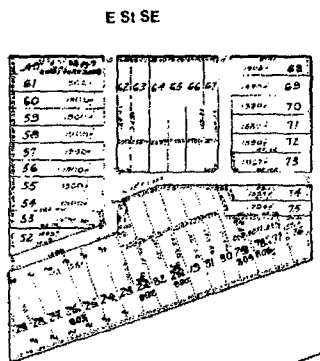
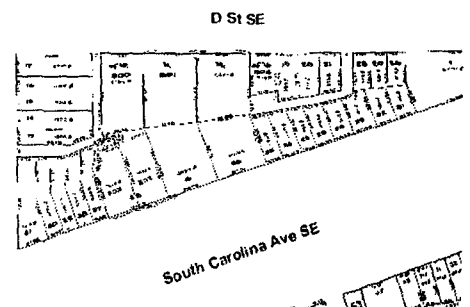
4th St SE



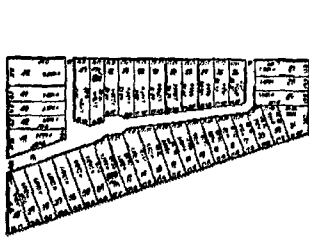
5th St SE



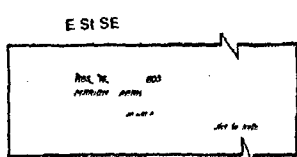
6th St SE



3rd St SE



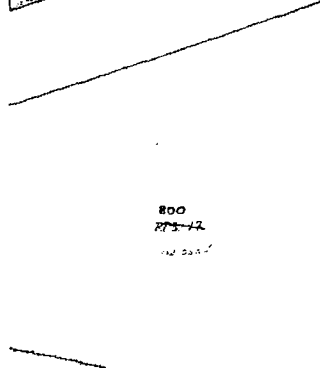
4th St SE



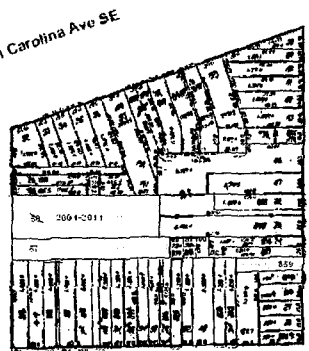
5th St SE



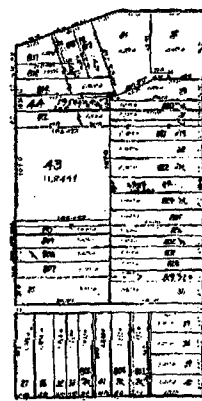
6th St SE



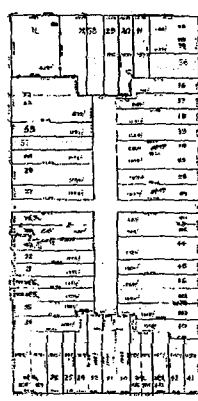
3rd St SE



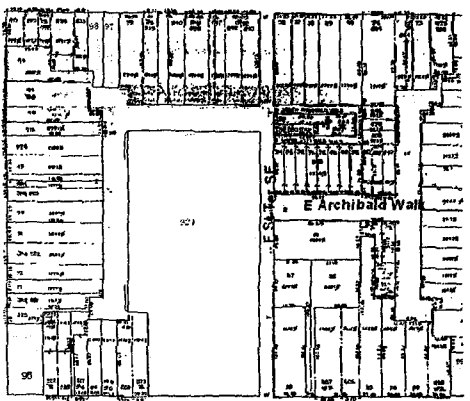
4th St SE



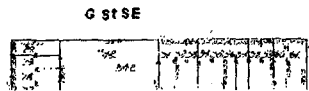
5th St SE



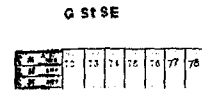
6th St SE



3rd St SE



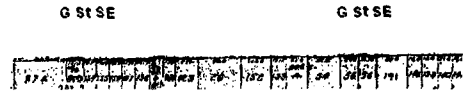
4th St SE



5th St SE



6th St SE



Marion Park (E Street between 4th and 6th Streets, SE, including Reservation 18)