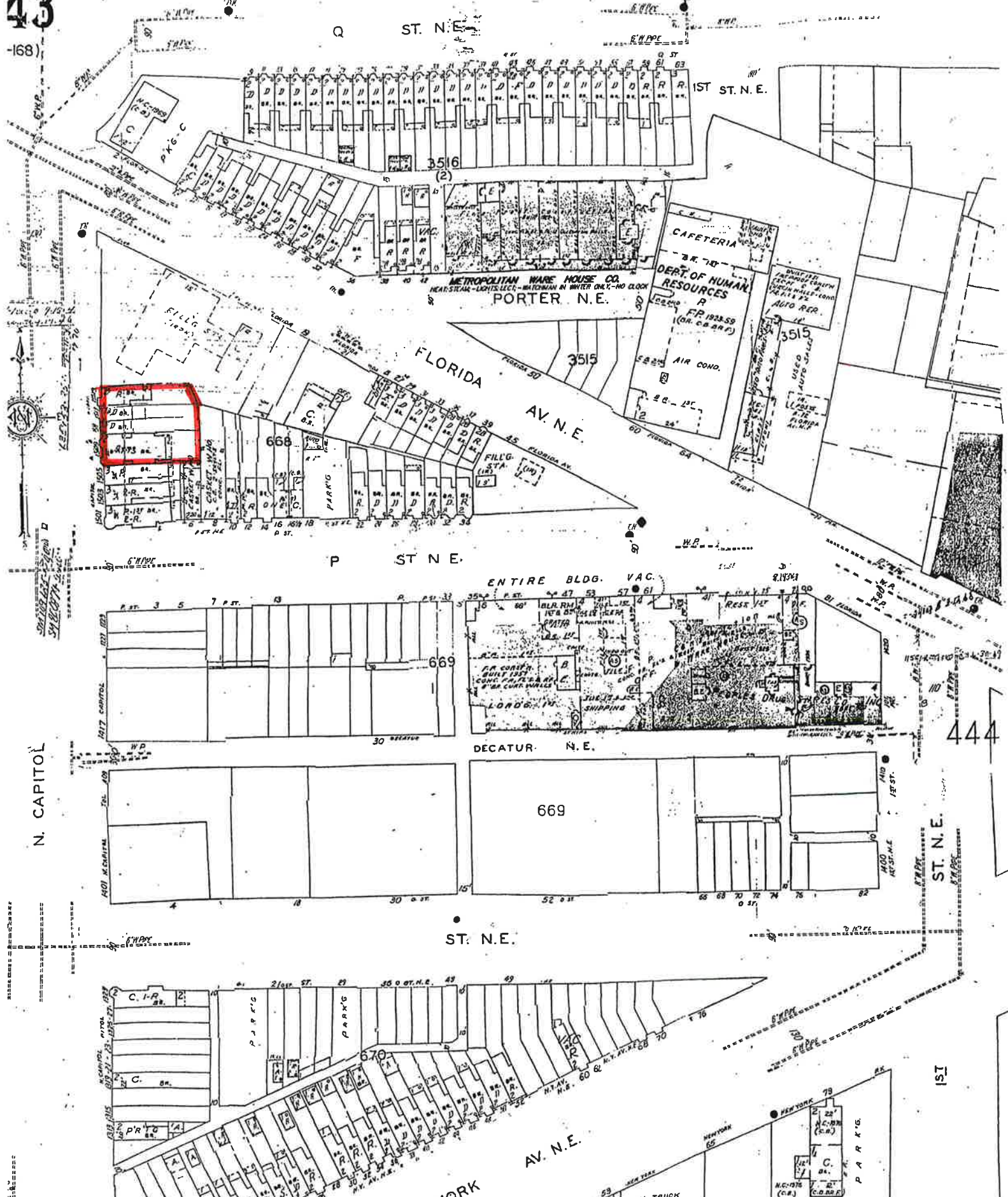


Board of Zoning Adjustment
 District of Columbia
 CASE NO. 19888
 EXHIBIT NO. 6

W. DC. Vol. 4
43
-168)

445



Q ST. N.E.

1ST ST. N.E.

FLORIDA AV. N.E.

P ST. N.E.

ENTIRE BLDG. VAC.

DECATUR N. E.

ST. N.E.

NEW YORK AV. N.E.

1ST ST. N.E.

N. CAPITOL

1ST

444

PKG. C

3516

(2)

METROPOLITAN WARE HOUSE CO.
PORTER N.E.

CAFETERIA

DEPT. OF HUMAN RESOURCES

AUTO RER.

3515

3515

668

669

669

670

79

PKG. C

OIL TRUCK STGE. YARD